

Small yellowish rectangular label on the top left corner of the book cover.

Faint, illegible text, possibly a date or location stamp.

MEMORANDUM BOOK

400

F.B. 326

H. S. CROCKER COMPANY

DRAWING MATERIALS AND
SURVEYING INSTRUMENTS

SAN FRANCISCO

326

TABLES FOR EXCAVATIONS AND EMBANKMENTS

DISTANCES FROM CENTER OF ROADWAY FOR CROSS-SECTIONING

Roadway 18 Feet Wide. Side Slopes 1 to 1.
For Single Track Excavation.

"Copyright, 1895, by Kueffel & Esser Co."

	0	.1	.2	.3	.4	.5	.6	.7	.8	.9	
0	9.0	9.1	9.2	9.3	9.4	9.5	9.6	9.7	9.8	9.9	0
1	10.0	10.1	10.2	10.3	10.4	10.5	10.6	10.7	10.8	10.9	1
2	11.0	11.1	11.2	11.3	11.4	11.5	11.6	11.7	11.8	11.9	2
3	12.0	12.1	12.2	12.3	12.4	12.5	12.6	12.7	12.8	12.9	3
4	13.0	13.1	13.2	13.3	13.4	13.5	13.6	13.7	13.8	13.9	4
5	14.0	14.1	14.2	14.3	14.4	14.5	14.6	14.7	14.8	14.9	5
6	15.0	15.1	15.2	15.3	15.4	15.5	15.6	15.7	15.8	15.9	6
7	16.0	16.1	16.2	16.3	16.4	16.5	16.6	16.7	16.8	16.9	7
8	17.0	17.1	17.2	17.3	17.4	17.5	17.6	17.7	17.8	17.9	8
9	18.0	18.1	18.2	18.3	18.4	18.5	18.6	18.7	18.8	18.9	9
10	19.0	19.1	19.2	19.3	19.4	19.5	19.6	19.7	19.8	19.9	10
11	20.0	20.1	20.2	20.3	20.4	20.5	20.6	20.7	20.8	20.9	11
12	21.0	21.1	21.2	21.3	21.4	21.5	21.6	21.7	21.8	21.9	12
13	22.0	22.1	22.2	22.3	22.4	22.5	22.6	22.7	22.8	22.9	13
14	23.0	23.1	23.2	23.3	23.4	23.5	23.6	23.7	23.8	23.9	14
15	24.0	24.1	24.2	24.3	24.4	24.5	24.6	24.7	24.8	24.9	15
16	25.0	25.1	25.2	25.3	25.4	25.5	25.6	25.7	25.8	25.9	16
17	26.0	26.1	26.2	26.3	26.4	26.5	26.6	26.7	26.8	26.9	17
18	27.0	27.1	27.2	27.3	27.4	27.5	27.6	27.7	27.8	27.9	18
19	28.0	28.1	28.2	28.3	28.4	28.5	28.6	28.7	28.8	28.9	19
20	29.0	29.1	29.2	29.3	29.4	29.5	29.6	29.7	29.8	29.9	20
21	30.0	30.1	30.2	30.3	30.4	30.5	30.6	30.7	30.8	30.9	21
22	31.0	31.1	31.2	31.3	31.4	31.5	31.6	31.7	31.8	31.9	22
23	32.0	32.1	32.2	32.3	32.4	32.5	32.6	32.7	32.8	32.9	23
24	33.0	33.1	33.2	33.3	33.4	33.5	33.6	33.7	33.8	33.9	24
25	34.0	34.1	34.2	34.3	34.4	34.5	34.6	34.7	34.8	34.9	25
26	35.0	35.1	35.2	35.3	35.4	35.5	35.6	35.7	35.8	35.9	26
27	36.0	36.1	36.2	36.3	36.4	36.5	36.6	36.7	36.8	36.9	27
28	37.0	37.1	37.2	37.3	37.4	37.5	37.6	37.7	37.8	37.9	28
29	38.0	38.1	38.2	38.3	38.4	38.5	38.6	38.7	38.8	38.9	29
30	39.0	39.1	39.2	39.3	39.4	39.5	39.6	39.7	39.8	39.9	30
31	40.0	40.1	40.2	40.3	40.4	40.5	40.6	40.7	40.8	40.9	31
32	41.0	41.1	41.2	41.3	41.4	41.5	41.6	41.7	41.8	41.9	32
33	42.0	42.1	42.2	42.3	42.4	42.5	42.6	42.7	42.8	42.9	33
34	43.0	43.1	43.2	43.3	43.4	43.5	43.6	43.7	43.8	43.9	34
35	44.0	44.1	44.2	44.3	44.4	44.5	44.6	44.7	44.8	44.9	35
36	45.0	45.1	45.2	45.3	45.4	45.5	45.6	45.7	45.8	45.9	36

Calculated by Julien A. Hall, M. Am. Soc. C. E.

*Return to City Engineers Office
City Hall, San Diego, Cal.*

LORING & CO., AGENTS.

762 FIFTH STREET,
SAN DIEGO, CALIFORNIA

Month	Collection	of Del Mar	(80')
7.6	Ed. of bat at	to W. Venice	
7.6/08	12.58	168.77	136.21
TP	10.47	176.45	2.99 165.78
			Froude
	13+20	E line of bat at	
SL			16.4 159.9
SL			11.4 164.9
"			9.2 167.1
SL			8.0 168.3
"			7.0 169.3
SL			4.8 171.5
SL			2.7 173.6
	13+35	15'E of bat	
SL			1.5 174.8
SL			2.8 173.5
"			4.0 172.3
SL			5.4 170.9
"			9.3 167.0
SL			10.7 175.6
SL			13.2 163.1

POSTED

PLOTTED

0
1
2
3
4
5
6
7
8
9
10
11
12
13
14
15
16
17
18
19
20
21
22
23
24
25
26
27
28
29
30
31
32
33
34
35
36

		17625		
13+45	25'	E of	6th st	
SL			12.9	163.4
ll			11.0	165.3
y			9.7	166.6
b			6.3	170.0
y			4.5	171.8
ll			3.0	173.3
ll			2.0	174.3
13+70	50'	E of	6th st	
ll			7.4	168.9
ll			9.8	166.5
y			10.8	165.5
b			12.1	164.2
y			11.7	164.6
ll			12.1	164.2
SA			13.1	163.2
TOP	9.75	17335	12.65	162.60

		17335		
13+75	55'	E of	6th st	
ll			12.6	160.8
ll			12.0	161.4
y			11.6	161.8
b			11.4	162.0
y			11.1	162.3
ll			9.2	164.2
ll			7.2	166.2
13+90	70'			
ll			10.0	163.4
ll			10.5	162.9
y			10.9	162.5
b			11.0	162.4
y			11.3	162.1
ll			11.0	162.4
SA			9.0	164.4

75' E of

PLOTTED

17335				
14+20	100'	E of	6th	st
S2				
bl			0.0	173.4
y			6.0	167.4
b			8.0	165.4
y			9.0	164.4
w			9.6	163.8
R2			9.6	163.8
14+45	125'	E of	6th	st
R2			8.8	164.6
bl			5.0	168.4
y			5.2	168.2
b			0.0	173.4
14+70	150'	E of	6th	st
R2				
R2			6.5	166.9
bl			5.2	168.2

17035				
14+85	165'	E of	6th	st
R2				
TP	10.10	182.52	0.93	172.42
14+20	100'	E of	6th	st
S2			8.7	173.8
14+45	125'	E of	6th	st
S2			4.8	177.7
bl			5.7	176.8
y			9.0	173.5
14+70	150'	E of	6th	st
S2			5.7	178.8
bl			2.5	180.0
y			3.0	179.5
78			5.0	177.5
bl			9.0	173.5
2 1/4			14.4	168.1
			11.1	

PLOTTED

		18252		
14785	165'	E of	6th st	
SL			2.4	180.1
bl			1.1	181.4
γ			1.5	181.0
b			8.2	174.3
γ			12.0	170.5
bl			12.0	170.5
TP	963	19092	1.3	182.9
14795	175'	E of	6th st	
SL			15.0	175.9
bl			14.0	176.9
γ			14.5	176.4
b			11.0	179.9
γ			8.0	182.9
bl			8.6	182.3
SL			9.8	182.1

		190.92		Set man
15710	190'	E of	6th st	
SL			8.0	182.9
bl			6.6	184.3
γ			6.0	184.9
b			6.8	184.1
γ			7.2	183.7
bl			5.6	185.3
SL			6.5	184.4
15720	200'	E of	6th st	
SL			4.0	186.9
bl			5.2	185.7
γ			4.5	186.4
b			4.0	186.9
γ			4.4	186.5
bl			5.7	185.2
SL			6.0	184.9

3

PLOTTED

19092

15+40	220'	E of	6th	
SR			4.7	186.2
LL			4.0	186.9
Y			3.0	187.9
b			2.0	188.9
Y			0.0	190.9
LL			0.0	190.9
RR			0.0	190.9

15+55	235'	E of	6th	
RR			4.0	192.9
LL			2.0	188.9
Y			2.2	188.9
b			8.6	182.3
Y			11.0	179.9
LL			12.5	178.4
SR			11.7	179.2

19092

15+70	250'	E of	6th	2nd	
SR			15.8	175.1	
LL			14.2	176.7	
Y			13.0	177.9	
b			12.6	178.3	
Y			10.0	180.9	
LL			7.0	183.9	
RR			4.2	186.7	

TP	0.98	<u>180.37</u>	11.52	179.39	
15+95	275'	E of	6th	1st	
RR			1.0	179.4	
LL			1.8	178.6	
Y			2.6	177.8	
b			3.7	176.7	
Y			4.5	175.9	
LL			6.0	174.4	
SR			7.5	172.9	

PLOTTED

18037

16+20	300'	E of	6th st	
SL			9.0	171.4
bl			7.3	173.1
y			6.8	173.6
b			5.7	174.7
y			4.8	175.6
bl			5.0	175.4
rk			4.6	175.8
16+45	325'	E of	6th st	
rk			3.9	176.5
bl			5.5	174.9
y			6.5	173.9
b			7.4	173.0
y			8.8	171.6
bl			10.0	170.4
SL			11.0	169.4

Average 353 tie points 18037

Del Mar

5

16+78 351' E of South + Pacific line
353' E of Beach - E line of Ocean Beach
Del Mar of setts 3' to South of the line

SL			9.0	171.4
bl			7.9	172.5
y			6.8	173.6
b			5.3	175.1
y			4.4	176.0
bl			3.5	176.9
rk			1.1	179.3
TP	1194	191.13	11.8	179.9
16+95	375'	E of	6th st	
rk			7.0	184.1
bl			8.7	182.4
y			10.2	180.9
b			11.0	180.1
y			11.6	179.5
bl			11.8	179.3
SL			11.6	179.5

PLOTTED

		1973		
17+20	400	E of	6th st	
SL			7.0	184.1
bl			5.5	185.6
y			5.2	185.9
b			3.0	188.1
y			1.4	189.7
bl			1.7	189.4
22			6.6	190.5
TP	922	20035	0.0	191.13
17+70	450	E of	6th st	
22			4.6	195.8
bl			6.3	193.1
y			7.7	192.7
b			9.2	191.2
y			10.8	189.6
bl			12.5	187.9
SL			13.8	186.6

		20035	Dist from	
18+20	500	E of	6th st	
SL			10.2	190.2
bl			8.2	192.2
y			6.7	193.7
b			4.7	193.7
y			3.8	196.6
bl			2.4	198.0
22			1.2	199.2
18+70	550	E of	6th st	
SL			8.8	191.6
bl			6.4	194.0
y			4.7	195.7
b			2.0	198.4
y			7.03	200.7
19+20	600	E = W 2 of	Amzot (60')	
SL			5.2	195.2
bl			3.3	197.1
y			1.6	198.8
TP	1276	20780	5.28	195.10

PLOTTED

		<u>20786</u>		
19+20	600'	E = W of	Guzot (60')	
ent			6.2	201.7
n 1/4			2.5	205.4
19+80	E line of		Guzot	
SL			7.5	200.6
bl			5.8	202.1
"			4.0	203.9
b			1.7	206.2
TP	12.94	<u>22030</u>	0.59	207.36
18+70	550'	E of	6th st	
SL			14.5	205.8
bl			17.5	202.8
19+20	600'	E = W of	Guzot (60')	
SL			7.8	212.5
bl			11.1	209.2
19+80	E line of		Guzot	
SL			5.3	215.0
bl			8.4	212.1
n 7			11.0	209.3

		<u>22030</u>		<u>Del. Men</u>
20+05	25'	E of	Guzot	7
SL			3.6	216.7
bl			5.8	214.5
20+30	50'	E of	Guzot	
SL			7.0	220.7
bl			1.4	218.9
"			3.4	216.9
b			6.0	214.3
"			9.4	210.9
bl			11.9	208.4
SL			13.4	206.9
20+55	75'	E of	Guzot	
SL			10.6	209.7
bl			9.4	210.9
"			8.3	212.0
b			5.3	215.0
"			1.7	218.6
TP	10.38	<u>22930</u>	1.28	219.02

PLOTTED

		<u>229.40</u>	
20+55	75' E of Survey		
nl		7.6	221.8
nl		5.2	224.2
20+80	100' E of Survey		
nl		6.0	223.4
bl		8.1	221.3
γ		10.2	219.2
b		11.7	219.7
γ		12.9	216.5
bl		14.0	215.4
sl		16.4	213.0
21+05	125' E of Survey		
sl		13.8	215.6
bl		13.1	216.3
γ		11.4	218.0
b		9.8	219.6
γ		7.4	222.0
bl		5.5	223.9
nl		3.8	225.6

		<u>229.46</u>		Del. Tra
21+30	150' E of Survey			
nl			9.0	229.4
bl			1.9	227.5
γ			3.8	225.6
b			5.6	223.8
γ			7.0	222.4
bl			8.4	220.8
			7.6	221.8
sl			8.0	221.4
TP	127.7	<u>240.57</u>	1.65	127.77
21+55	175' E of Survey			
sl			10.5	230.0
bl			11.1	229.4
γ			11.6	228.9
b			11.3	229.2
γ			10.0	230.5
bl			8.6	231.9
nl			7.3	233.2

PLOTTED

		24854		
21+80	200	E of	Survey	
nl			60	234.5
hl			64	234.1
y			75	233.0
b			86	231.9
y			90	231.5
hl			90	231.5
SL			95	231.0
22+42	242	E of	Survey = W.L. of Right of Way at front	
SL			62	234.3
hl			53	235.2
y			45	236.0
b			40	236.5
y			27	237.8
hl			18	238.7
nl			1.2	239.3
TP	10.42	249.83	113	239.41

		249.83	Del Mar	
22+30	250	E of	Survey	
SL			144	235.4
22+80	300	E of	Survey	
SL			85	241.3
242	311.5	on front line		(144) on Del Mar
		E = W.L. of Right of Way at front		
SL	= 311.5		74	242.4
hl			86	241.2
y			96	240.2
b			90	240.8
hl			96	240.2
hl			10.0	239.8
nl = 242.8			10.4	239.4
		W.L. of Right of Way		
22			90	240.8
hl			90	240.8
y			80	241.8
b			80	241.8
y			76	242.2
hl			75	242.2
SL			63	243.3

PLOTTED

249.83

W^{1/4} of Right of Way

SR	5.4	244.4
bl	6.2	243.6
7	6.8	243.0
6	7.4	242.4
7	6.8	243.0
bl	8.1	241.7
SR	8.3	241.5

Center of R-W

SR	8.0	241.8
bl	7.0	242.8
7	6.1	243.7
6	6.3	243.5
7	6.2	243.6
bl	5.1	244.7
SR	4.4	245.4

249.80

E^{1/4} of R of Way

SR	3.4	246.4
bl	4.0	245.8
7	5.0	244.8
6	4.8	245.0
7	5.7	244.1
bl	6.5	243.3
SR	7.4	242.4

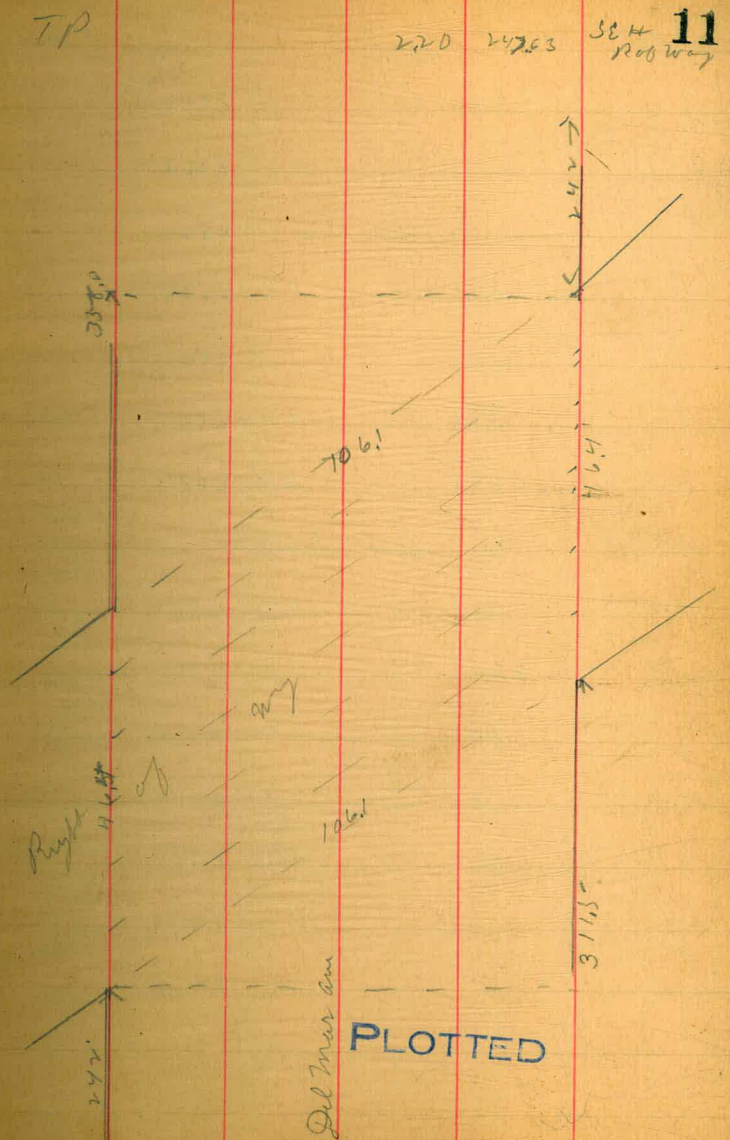
Center of R-W

SR	6.6	243.2
bl	5.6	244.2
7	4.8	245.0
6	3.8	246.0
7	3.4	246.4
bl	5.2	246.6
SR	2.6	247.2

PLOTTED

24983

E dim of Right of way			
SL		22	247.6
bl		23	247.5
y		27	247.1
b		29	246.9
y		37	246.1
bl	POSTED	47	245.1
SL		55	244.3
22+80	300' E of Survey = 115' E of Right of way		
SL		44	245.4
22+30	350' E of Survey		
SL		00	249.8
23+36	358' E of Survey - E of Right of way on South		
SL		71.0	250.8
bl		0.0	249.8
y		0.5	249.3
b		0.7	249.4
y		0.8	249.0
bl		1.3	248.5
SL = E of Right of way		2.2	247.6



385' E of Budget
 23+65 1147 259.10 247.63

SL 13.2 245.9
 HL 9.0 250.1
 4 8.4 250.7
 6 8.4 250.7
 9 8.2 250.9
 HL 7.4 251.7
 HL 6.4 252.7

23+80 400' E of Budget

HL 4.4 254.7
 HL 4.0 255.1
 9 6.7 252.4
 6 9.3 249.8
 7 10.5 248.6
 HL 12.0 247.1
 SL 12.7 246.4

25910 Del Ma

23+95 415' E of Budget

SL 12.0 247.1
 HL 11.5 247.6
 4 10.5 248.6
 6 9.0 250.1
 9 7.7 251.4
 HL 6.2 252.9
 HL 0.0 259.1

24+05 + 425' E of Budget

SL 11.0 248.1
 HL 10.3 248.8
 9 9.4 249.7
 6 7.7 251.2
 7 6.3 252.8
 HL 4.3 251.7

PLOTTED

		25910		
24+30	450	E of	Survey	
SL			85	250.6
bl			76	251.5
y			62	252.9
b			55	253.6
24+55	475'	E of	Survey	
SL			53	253.8
bl			40	255.1
TP	1140	26583	467	257.73
24+05	425'	E of	Survey	
SL			50	260.8
+10'			52	260.6
24+30	450'	E of	Survey	
SL			48	261.0
bl			45	261.3
y			42	261.6

		26583		
24+55	475'	E of	Survey	
SL			56	260.2
bl			49	260.9
y			47	261.2
b			58	262.0
y			36	262.2
24+80	500'	E of	Survey	
SL			35	262.3
bl			40	261.8
y			45	261.3
b			52	260.5
y			56	260.2
bl			60	259.8
SL			65	259.3

13

PLOTTED

		<u>26583</u>		
25780	550'	E of	Buzyet	
nl			99	255.9
bl			94	255.5
"			88	257.0
b			82	257.6
"			77	258.1
bl			72	258.6
SL			68	259.0
25780	600'	E = W of	Santa Barbara (60')	
SL			106	255.2
bl			110	254.8
"			114	254.4
b			119	253.9
"			127	253.1
bl			132	252.6
SL			140	251.8
T.P.	396	<u>25711</u>	1268	253.15

		<u>25711</u>	<u>Del Mar</u>
	W of	Santa Barbara	
nl			58 251.3
bl			55 251.6
"			49 252.2
b			44 252.7
"			38 253.3
bl			33 253.8
SL			28 254.3
	W of	Santa Barbara	
SL			34 253.7
bl			38 253.3
"			44 252.7
b			57 252.0
"			57 251.4
bl			62 250.9
nl			67 250.4

PLOTTED

25-711

Center of Santa Barbara

72	75	249.6
bl	68	250.3
y	62	250.9
b	54	251.7
y	51	252.0
bl	45	252.6
SL	42	252.9

E 1/4 of S-B

SL	47	252.2
bl	56	251.5
y	58	251.3
b	63	250.8
y	70	250.1
bl	76	249.5
72	81	249.0

1953

25711

Ebb of S-B

72	88	248.3
bl	82	248.9
y	79	249.2
b	66	250.5
y	66	250.5
bl	61	251.0
SL	56	251.5

Edin of S-B

SL	64	250.7
bl	70	250.1
y	74	249.7
b	78	249.3
y	85	248.6
bl	90	248.1
72	97	247.4

PLOTTED

	50'	257.11	Santa Barbara	
SL			12.6	244.5
hh			12.2	144.9
y			11.5	145.6
b			11.1	146.0
y			10.6	146.5
hh			9.8	147.3
SL			9.5	147.6
TP	0.24	245.41	11.94	248.7
	100'	E of	S-B	
SL			0.7	244.7
hh			1.1	244.3
y			1.7	243.7
b			2.0	243.4
y			2.7	242.7
hh			3.3	242.1
SL			3.8	241.6

	150'	245.41	Del Mar	
SL			6.7	239.0
hh			6.0	239.4
y			5.6	239.8
b			5.1	240.3
y			4.8	240.6
hh			4.4	241.0
SL			3.9	241.5
	200'	E of	S-B	
SL			6.6	238.8
hh			7.0	238.4
y			7.4	238.0
b			7.8	237.6
y			8.0	237.4
hh			8.5	236.9
SL			8.7	236.7

PLOTTED

	250'	<u>245-44</u>	E of Santa Barbara	
SL			10.5	234.9
bb			10.1	235.3
y			9.9	235.5
b			9.7	235.7
y			9.5	235.9
bb			9.3	236.1
SL			9.0	236.4
	300'		E of S-B	
SL			11.0	234.4
bb			11.1	234.3
y			11.3	234.1
b			11.5	233.9
y			11.7	233.7
bb			11.9	233.5
SL			12.0	233.4
Tip	130'	<u>235-25</u>	11.46	233.95

	350'	<u>235-25</u>	E of S-B	Del Mar
SL			2.8	232.4
bb			2.8	232.4
y			2.7	232.5
b			2.7	232.5
y			2.6	232.6
bb			2.6	232.6
SL			2.6	232.6
	400'		E of S-B	
SL			4.2	231.0
bb			4.1	231.1
y			3.9	231.3
b			3.8	231.4
y			3.7	231.5
bb			3.6	231.6
SL			3.5	231.7

17

PLOTTED

235-25

450'	E of	Santa Barbara	
21		40	231.2
bl		41	231.1
7		44	230.8
6		47	230.5
4		49	230.3
bl		52	230.0
SL		54	229.8

500' E of S-B-

SL	63	228.9
bl	58	229.4
7	54	229.8
6	52	230.0
4	47	230.5
bl	45	230.7
21	43	230.9

235-25

Get man

18

550'	E of	S-B-	
bl		54	229.8
bl		56	229.6
7		60	229.2
6		63	228.5
4		67	228.5
bl		68	228.4
SL		72	228.0

600' E-W L & B Venice

SL	88	226.4
	85	226.7
	82	227.0
	80	227.2
	75	227.7
	73	227.9
	73	227.9
	730	227.95

nw H Venice

PLOTTED

cross-section of Orchard St (80')

Edges of bit at top & bottom
FROUDE

Bl 760 140.67 133.07

nw 1/4
of Orchard

13+70 E.L. of bit at

nl 88 131.9

bl 10.3 130.4

7 12.1 128.6

POSTED

b 13.7 127.0

7 15.6 125.1

bl 16.8 123.9

sl 17.1 123.6

5' E of bit

sl 19.0 121.7

13+45 25' E of bit ✓

sl 15.4 124.3

bl 15.0 125.7

7 14.0 126.7

b 13.3 127.4

7 11.7 129.0

bl 9.5 131.2

nl 8.0 132.7

140.67

Orchard

19

13+70

50'

E of

bit

at

nl

20

138.7

bl

33

137.4

7

60

134.7

b

90

131.7

7

115

128.2

POSTED

bl

131

127.6

sl

134

127.3

13+75

75'

E of

bit

at

sl

140

129.7

bl

110

129.7

7

102

130.5

b

94

131.3

7

75

133.2

bl

57

135.0

nl

37

137.3

POSTED

<u>14064</u>			
14430	120'	E of	6th st
RL			2.0 1387
ll			5.2 135.5
γ			6.8 133.9
b			6.6 134.1
γ			4.6 136.1
ll			3.0 137.7
SL			2.4 138.3
14440	120	E of	6th st
RL			+1.0 141.7
ll			3.7 137.0
γ			4.4 136.3
b			+1.0 141.7
14470	150	E of	6th st
RL			0.8 139.9
ll			0.8 139.9
TP	11.24	<u>15226</u>	0.35 140.32

<u>15226</u>			
14440	120'	E of	6th st
SL			11.7 140.6
ll			10.7 141.6
γ			9.0 143.3
14470	150'	E of	6th st
S-L			8.6 143.7
ll			7.0 145.3
γ			6.0 146.3
b			4.5 147.8
+5			3.0 147.3
ll			10.0 142.3
14495	175	E of	6th st
SL			8.2 144.1
ll			5.0 147.3
γ			3.0 149.3
b			2.0 150.3
γ			0.0 152.3
ll			4.5 147.8
RL			10.0 142.3
TP	10.13	<u>16207</u>	0.32 151.94

16207

15+70	200'	E of	6th st	at
nl			12.0	150.1
bl			4.5	157.6
?			6.0	156.1
b			10.0	152.1
?			13.4	148.7
bl			16.0	146.1
sl			17.2	144.9
15+45	225'	E of	6th st	at
sl			10.0	152.1
bl			9.0	153.1
?			8.0	154.1
b			7.0	155.1
?			4.0	158.1
bl			1.5	160.6
nl			0.0	162.1

16207

Credera

21

15+70	250'	E of	6th st	at
sl			6.6	155.5
bl			4.3	157.8
?			2.5	159.8
b			0.7	161.4
TP	8.66	<u>16999</u>	0.74	161.33
?			9.0	161.0
bl			7.4	162.6
nl			5.4	164.6
15+95	275'	E of	6th st	at
nl			4.3	165.7
bl			4.7	165.3
?			4.4	165.6
b			5.6	164.4
?			7.3	162.7
bl			9.0	161.0
sl			11.0	159.0

		16999		
16+70	300'	E of	bit	st
SA			13.2	157.8
bl			8.0	162.0
γ			5.2	164.8
b			3.8	167.2
γ			3.9	166.1
bl			3.5	166.5
nl			4.2	165.8
7P.	0.77	15968	11.10	15889
Amagetic Point sheets = 34x23	343'8" N 340'8" S	= Pueblo line E of Ocean Beach		
16+67		Arched	st	offsets 4.0 to South at Pueblo line
nl			0.8	158.9
bl			2.0	157.7
γ			3.6	156.1
b			4.7	155.0
γ			7.0	152.7
bl			9.2	150.5
SA			10.4	149.3

		15968	Arched	
16+95	375'	E of	bit	st
SA			10.6	149.1
bl			9.3	150.4
γ			8.2	151.5
b			7.0	152.7
γ			6.0	153.7
bl			4.6	155.1
nl			3.5	156.2
17+70	400'	E of	bit	st
nl			4.0	155.7
bl			5.0	154.7
γ			5.8	153.9
b			6.7	153.0
γ			7.7	152.0
bl			8.7	151.0
SA			9.6	150.1

		15968		
17+45	425'	E of	6th st	
SL			88	1509
bl			80	1517
γ			66	1531
b			57	1540
γ			47	1550
bl			35	1562
n2			28	1569
17+70	450'	E of	6th st	
n2			15	158.2
bl			24	157.3
γ			32	156.5
b			21	157.6
γ			34	156.3
bl			52	154.5
SL			53	154.4
TP	1789	17143	117	13-854

		17143	Orchard	
17+95	475'	E of	6th st	
SL			10.1	161.3
bl			11.0	160.4
γ			10.9	160.5
b			10.1	161.3
γ			9.3	162.1
bl			10.0	161.4
n2			11.0	160.4
18+20	500'	E of	6th st	
n2			8.0	163.4
bl			6.0	165.4
γ			6.7	164.7
b			7.8	163.6
γ			8.0	163.4
bl			8.0	163.4
SL			6.6	164.8

		171.43		
18+45	5-25'	E of	6th st	10'
SL			15	169.9
ll			38	167.6
y			45	166.9
ll			56	165.8
y			50	166.4
ll			43	167.1
22			62	165.2
TP	10.06	177.85	364	167.79
18+70	5-50'	E of	6th st	
22			106	167.3
ll			107	167.2
y			100	167.9
b			91	168.8
y			73	170.6
ll			54	172.5
SL			48	173.1

		177.85		Archer	
18+95	5-75'	E of	6th st		
SL			55	172.4	
ll			50	172.9	
y			50	172.9	
b			65	171.4	
y			75	170.4	
ll			87	169.2	
22			84	169.5	
19+70	600'	E - W. 2nd	burgot st	(60')	
22			62	171.7	
ll			63	171.6	
y			61	171.8	
b			50	172.9	
y			45	173.4	
ll			56	172.3	
SL			72	170.7	

19+80		Edins of		17785		Budget	
SL				46	173.3		
bl				42	173.7		
y				33	174.6		
b				25	175.4		
y				21	175.8		
bl				11	176.8		
nl	12.11	18996	0.00	17785			
20+30		50		E of		Budget	
nl				70	183.0		
bl				78	182.2		
y				82	181.8		
b				87	181.3		
y				86	181.3		
bl				95	180.4		
SL				97	180.3		
TP	12.57	20019	2.64	189.32			

net budget

20+80		100		E of		20019		Archa	
SL				13.4	186.8				
bl				12.8	187.4				
y				12.2	188.0				
b				11.1	189.1				
y				10.7	189.7				
bl				10.2	189.0				
nl				9.8	190.4				
21+30		130		E of		Budget			
nl				18	198.4				
bl				21	198.1				
y				23	197.9				
b				32	197.0				
y				42	196.0				
bl				53	194.9				
SL				68	193.4				
TP	12.64	21205	0.82	199.37					

POSTED

		21205		
21+80	200'	E of	Summit	
SL			13.2	198.9
hh			11.3	200.8
y			10.1	202.0
b			8.2	203.9
y			6.6	205.5
hh			5.0	207.1
nl			5.0	207.1

TP 1253 2202 4.37 207.68

22+30	250'	E of	Summit	
nl			6.8	213.4
hh			8.0	212.2
y			9.7	210.5
b			10.4	209.8
y			11.4	209.0
hh			13.3	206.9
SL			15.2	205.0

TP 1273 2289 4.63 205.52

		22829	Arched	
22+80	300'	E of	Summit	
SL			13.3	215.0
hh			11.5	217.8
y			9.8	218.5
b			8.0	220.3
y			6.4	221.9
hh			4.8	223.5
nl			4.2	224.1

TP 1259 2394 1.47 226.82

23+20	350'	E of	Summit	21
SL			13.1	226.3
hh			10.7	228.7
y			8.6	230.8
b			6.7	232.7
y			5.1	234.3
hh			4.1	235.3
nl			3.4	236.2

23941

73+50	375	E of	Guzot	
nl			+0.5	239.9
bl			0.5	238.9
y			1.8	237.6
b			2.5	236.9
y			3.3	236.1
bl			5.7	233.7
sl			9.5	229.9

73+80	400	E of	Guzot	
sl			8.4	231.0
bl			5.0	234.4
y			3.0	236.4
b			0.5	238.9

74+30	450	E of	Guzot	
sl			7.0	232.4
bl			4.8	234.6
y			2.0	237.1
b			+0.5	239.9

IP	12.27	25168	0.0	239.41
----	-------	-------	-----	--------

25168

Arched

27

73+80	400	E of	Guzot	
nl			9.0	242.7
bl			10.1	241.6
y			11.8	239.9

74+30	450	E of	Guzot	
nl			6.8	244.9
bl			7.7	244.0
y			9.8	241.9

74+80	500	E of	Guzot	
nl			4.0	247.7
bl			5.7	246.0
y			7.0	244.7
b			8.2	243.5
y			9.2	242.5
bl			11.5	240.2
sl			12.9	138.9

		257.68		
75+30	550'	200	Quartz	
SL			6.7	245.0
bl			5.5	246.2
y			4.5	247.2
b			3.7	248.0
y			3.0	248.7
bl			1.7	250.0
SL			0.6	251.1
TR	12.50	259.74	4.44	247.24
75+58	5-75'	E of	Quartz - W. side of P. 104	
SL			7.6	252.1
25+80	600'	E =	W. 2 of Santa Barbara (60)	
SL			12.5	247.2
bl			11.0	248.7
y			9.8	249.9
b			8.8	250.9
y			8.1	251.6
bl			7.4	252.3
SL			6.6	253.1

		259.74	Archerd	
			W. 1/4 of Santa Barbara	
SL			6.1	253.6
bl			6.4	253.3
y			7.5	252.2
b			8.5	251.2
y			9.4	250.3
bl			10.7	249.0
SL			12.5	247.2
			W. 1/4 of S-B	
SL			11.6	248.1
bl			10.4	249.3
y			9.6	250.1
b			8.2	251.5
y			7.1	252.6
bl			6.4	253.3
SL			5.8	253.9

25-9-74

Center of Santa Barbara

SL	5.1	254.6
bl	6.1	253.6
7	7.0	252.7
6	7.8	251.9
7	9.0	250.7
bl	10.2	249.5
SL	11.1	248.6

E 1/4 of S-B-

SL	11.4	248.3
bl	10.0	249.7
7	9.2	250.5
6	7.7	252.0
7	6.8	252.9
bl	5.6	254.1
SL	4.0	255.7

25-9-74

Archives

29

E bl of S-B-

SL	4.0	255.7
bl	4.7	255.0
7	6.8	252.9
6	7.6	252.1
7	8.8	250.9
bl	9.3	250.4
SL	10.5	249.2

E line of S-B-

SL	9.8	249.9
bl	9.2	250.5
7	8.4	251.3
6	7.0	252.7
7	6.2	253.5
bl	4.3	255.4
SL	3.3	256.4

25974

25' E of Santa Barbara

22	3,6	256.1
hh	3,8	255.9
y	4,4	255.3
b	4,8	254.9
y	7,8	251.9
hh	8,0	251.7
SL	8,0	251.7
SL	8,6	251.1
hh	6,5	253.2
y	5,4	254.3
b	5,3	254.4
y	5,4	254.3
hh	5,4	254.3
22	5,6	254.1

50' E of S-B

SL	8,6	251.1
hh	6,5	253.2
y	5,4	254.3
b	5,3	254.4
y	5,4	254.3
hh	5,4	254.3
22	5,6	254.1

25974

100' E of Gungt

22	9,0	250.7
hh	9,0	250.7
y	8,8	250.9
b	9,0	250.7
y	8,8	250.9
hh	8,8	250.9
SL	8,5	251.2

150' E of Gungt

SL	12,3	247.4
hh	12,4	247.3
y	12,4	247.3
b	12,4	247.3
y	12,3	247.4
hh	12,6	247.1
22	12,5	247.2

TP	1,79	249.77	11,76	247.88
----	------	--------	-------	--------

Arched

30

POSTED

249.77

200' E of Santa Barbara

nl	62	243.6
bl	61	243.7
y	60	243.8
b	60	243.8
4	60	243.8
bl	58	244.0
SL	60	243.8
250' E of	S-B	
SL	94	240.4
bl	95	240.3
y	95	240.3
b	96	240.2
y	96	240.2
bl	97	240.1
nl	96	240.2

249.77

Crick

31

300' E of

nl	5-	B-
bl	130	236.8
y	128	237.0
b	130	236.8
4	129	236.9
bl	130	236.8
SL	127	237.1
TP	127	237.1
110	258.72	1215 257.52
330' E of	S-B	
SL	53	233.4
bl	50	233.7
y	52	233.5
b	53	233.4
y	52	233.5
bl	53	233.4
nl	52	233.5

23872

400' E of Santa Barbara

n2	82	230.5
bl	83	230.4
7	82	230.5
b	83	230.4
7	83	230.4
bl	83	230.4
SL	83	230.4

450' E of S-B

SL	10.9	227.8
bl	11.0	227.7
7	11.0	227.7
b	10.9	227.8
7	11.0	227.7
bl	10.9	227.8
n2	10.9	227.8

TP	162	23012	10.22	22850
----	-----	-------	-------	-------

23012

500' E of S-B

n2	46	225.5
bl	46	225.5
7	46	225.5
b	46	225.5
7	46	225.5
bl	46	225.5
SL	49	225.2

550' E of S-B

SL	74	222.7
bl	74	222.7
7	73	222.8
b	73	222.8
7	71	223.0
bl	70	223.1
n2	70	223.1

32

250.12

600 E = WL of Forest
 22 10.32 219.88 NW 1/4
 22 10.2 219.9 Name
 7 10.2 219.9
 6 10.0 220.1
 4 10.2 219.9
 4 10.3 219.8
 SL 10.4 219.7

POSTED

Benchmarks for Loma Alta

33

7.61 33.24 25.63 SW 1/4
 4+ Bury Hill
 TP 11.74 44.14 0.84 32.40
 TP 12.02 55.66 0.50 43.64
 TP 11.25 66.27 0.64 55.02
 TP 11.48 73.59 4.36 61.51
 TP 12.10 84.43 1.26 72.33
 BM 12.23 72.20 SE Grade Hill
 10.73 92.09 3.07 81.36 Vallain &
 1.67 86.33 7.43 84.66 Gungot
 BM 0.53 79.16 7.70 78.63
 1.64 69.42 11.28 67.78
 BM 8.42 62.19 8.65 60.77 SW Cor
 11.28 79.65 0.82 68.37 Bridge at
 BM 2.17 77.48 60.77 bñlahim
 BM 1.69 77.96 or 200-50 50
 in Road Vallain on
 San Clemente

	79.65		
083	69.20	11.28	68.73
1272	79.15	2.77	66.43
1037	88.98	0.54	78.51
014	86.12	3.00	85.98
156	75.40	1.28	73.84
055	72.90	3.05	72.35
		10.89	62.02

and H is
Munster

	12.01	89.44		77.49
TP	11.96	101.20	0.25	89.24
	12.75	113.21	0.74	100.46
	11.83	124.37	0.67	112.54
	6.12	130.40	0.09	124.28
			0.53	129.87

Bm at
San Clemente

n w H
Aidal

n w H
Tennessee
San Clemente

Cross-section of San Clemente (60')
Tennessee to Youngs

0.53 130.40 129.87

2 in of Tennessee

wh	0.50	129.9
hh	1.2	129.2
y	1.5	128.9
b	2.2	128.2
y	3.0	127.4
h	3.6	127.8
EL	4.3	126.1

50' 2 of Tennessee

EL	8.9	121.5
hh	8.4	122.0
y	7.9	122.5
b	7.3	123.1
y	7.0	123.4
hh	6.6	123.8
wh	6.2	124.2

PLOTTED

San Tennessee
San Clemente

POSTED

130.40

San Clemente

35

100' n of Tennessee

wh	109	119.5
hh	11.1	119.3
y	11.5	118.9
b	11.8	118.6
y	12.3	118.1
hh	12.4	118.0
EL	13.1	117.3
TP	0.34	117.99

Pueblo line 140' n of Tennessee

150' n of Tennessee

EL	4.6	113.4
hh	4.2	113.8
y	4.0	114.0
b	3.7	114.3
y	3.4	114.6
hh	3.0	115.0
wh	3.0	115.0

11799

200 n of Tennis

WL	70	110
ll	72	110.8
γ	74	110.6
b	76	110.4
γ	80	110.0
ll	82	109.8
EL	85	109.5

250 n of Tennis

EL	124	105.6
ll	122	105.8
γ	120	106.0
btr	116	106.4
γ	115	106.5
ll	114	106.6
WL	110	107.0

022 107.29 107.2 107.07

PLOTTED

10729

San Clemente 36

270 n of Tennis = S Slope of Hotel (60')

WL	18	105.5
ll	21	105.2
γ	22	105.1
b	25	104.8
γ	29	104.4
ll	30	104.3
EL	32	104.1

S Slope of Hotel

EL	40	103.3
ll	39	103.4
γ	35	103.8
b	32	104.1
γ	31	104.2
ll	29	104.4
WL	26	104.7

10729
S 1/4 of Aidal

W2	33	103.8
bb	35	103.8
"	40	103.3
b	42	103.1
y	43	103.0
bb	45	102.8
EL	48	102.5

center of Aidal

EL	58	101.5
bb	55	101.8
y	52	102.1
b	50	102.3
y	47	102.6
bb	45	102.8
W2	43	103.0

10729
N 1/4 of Aidal
San Clemente 37

W2	51	102.2
bb	53	102.0
y	55	101.8
b	58	101.5
y	60	101.3
bb	60	101.3
EL	68	100.0

N 1/4 of Aidal

EL	75	99.8
bb	72	100.1
y	68	100.5
b	63	101.0
y	60	101.3
bb	60	101.3
W2	60	101.3

10722

Wd of	Wd of	at	
WR		69	100.4
bl		69	100.4
Y		72	100.1
b		75	99.8
Y		76	99.7
bl		82	99.1
ER		87	99.6

340' n of Tennant + 10' n of Wd of =

Wd of	Wd of	at	
ER	Wd of Wd of (70')	100	99.3
bl		96	97.7
Y		90	98.3
b		86	98.7
Y		83	99.0
bl		81	99.2
WR		77	99.6

PLOTTED

S 10722

San Clemente 38

S 1/4 of Wd of

WR		89	98.4
bl		92	98.1
Y		97	97.6
b		101	97.2
Y		110	96.3
bl		115	95.8
ER		123	95.0
TP	387	98.98	1218 95.11

S 1/4 of Wd of

ER		79	91.1
bl		66	92.4
Y		52	93.8
b		38	95.2
Y		31	95.9
bl		27	96.3
WR		24	96.6

9898
Center of Udal

W2	48	94.2
bl	52	93.8
7	59	93.1
6	66	92.4
7	81	90.9
bl	86	90.4
82	96	89.4

N ¹/₄ of Udal

82	105	88.5
bl	98	90.2
7	91	89.9
6	84	90.6
7	76	91.4
bl	68	92.2
W2	64	92.6

PLOTTED

9898
San Clemente 39
N bl of Udal

W2	76	91.4
bl	80	91.0
7	84	90.6
6	91	89.9
7	99	89.1
bl	107	88.3
82	111	87.9

nd of Udal

82	121	86.9
bl	112	87.8
7	105	88.4
6	101	88.9
7	94	89.6
bl	90	90.0
W2	86	90.4
TP	0.41	8679 1260 8638

8679

50'	n of	tidal	
WL		0.8	86.0
ll		1.0	85.8
γ		0.5	86.3
l		1.9	84.9
γ		2.8	84.5
ll		2.7	84.1
EL		3.6	83.2

100'	n of	tidal	
EL		8.0	78.8
ll		7.4	79.4
γ		6.8	80.0
l		6.3	80.5
γ		5.8	81.0
ll		5.5	81.3
WL		5.2	81.5

PLOTTED

8679 San Clemente

150'	n of	tidal	
WL		9.2	79.5
ll		9.4	77.4
γ		9.8	78.0
l		10.5	76.3
γ		10.6	76.2
ll		10.2	76.6
EL		10.7	76.1

210'	n of	tidal	
TP	210	79.58	9.21 72.48
	298	n of	tidal = 5.2 (20')
EL		7.4	72.2
ll		7.5	72.1
γ		7.2	72.4
l		6.3	73.3
γ		6.0	73.6
ll		5.7	73.9
WL		5.0	74.6

40

7954

200' n of ... Sd Voltan (70)

WL		8.0	71.6
bb		7.9	71.7
y		7.7	71.9
b		7.7	71.9
y		7.7	71.9
bl		7.7	71.9
EL		7.5	72.1
	n of Voltan so		
EL		8.6	71.0
bl		8.7	70.9
y		8.8	70.8
b		8.8	70.8
y		8.9	70.7
bl		8.9	70.7
WL		8.5	71.1

PLOTTED

7954 San Clemente 41

25' n of Voltan

WL		10.6	69.0
bl		10.4	69.2
y		10.5	69.1
b		10.6	69.0
y		10.7	68.9
bl		10.4	69.6
EL		13.2	66.4
TP	238	70.46	11.50 68.08
	30'	n of Voltan	
EL		9.0	61.5
bl		6.8	63.7
y		3.0	67.5
b		3.0	67.5
y		3.0	67.5
bl		2.8	67.7
WL		3.0	67.5

	75'	<u>70.46</u>	Ref	Voltan
WR				4.7 65.8
bl				4.6 65.9
γ				4.8 65.7
l				5.0 65.5
γ				5.1 65.4
bl				8.7 61.8
ER				12.8 57.7
	100'		Ref	Voltan
ER				13.6 56.9
bl				10.8 59.7
γ				8.0 62.5
l				7.7 62.8
γ				7.2 63.3
bl				6.6 63.9
WR				6.5 64.0
TP	0.07	<u>60.63</u>	9.90	60.56

PLOTTED

	125'	<u>60.63</u>	Ref	Voltan
WR				0.0 60.6
bl				2.4 58.4
γ				2.4 57.2
l				4.5 56.1
γ				6.0 54.6
bl				6.7 53.9
ER				7.6 53.0
	130'		Ref	Voltan
ER				13.6 47.0
bl				12.5 48.1
γ				11.0 49.6
l				8.9 51.7
γ				7.5 53.1
bl				5.8 54.8
WR				4.8 55.8

42

	175'	60.63	n of	Galton
WL				6.0 54.6
bb				8.5 52.1
y				10.0 50.6
b				12.0 48.6
TP	5.5-8	5-9.48	11.73	48.90
y				7.7 46.8
bb				9.1 45.4
EL				11.4 43.1
	200		n = 52 of	Whittier (70')
EL				10.1 44.4
bb				7.8 46.7
y				6.0 48.5
b				4.3 50.2
y				2.7 52.8
bb				0.8 53.7
WL				7.8 53.3

PLOTTED

	54.48	San Clemente	
WL	5.6	Whittier	43
bb	7.0		55.8
y	1.0		53.5
y	2.7		51.8
b	4.7		50.1
y	5.8		48.7
bb	7.5		47.0
EL	9.9		44.6
	5.4	Whittier	
EL	10.2		48.3
bb	7.3		47.2
y	5.5		49.3
b	3.6		50.9
y	3.0		51.5
bb	2.0		52.5
WL	1.2		53.3

5448

Center of Whittier

W2	40	50.5
bl	54	49.1
7	56	48.9
b	62	48.3
7	63	48.2
ch	85	46.0
EL	113	43.2
N. side of Whittier		
EL	130	41.5
bl	103	44.2
7	85	46.0
b	80	46.5
7	80	46.5
bl	76	46.9
W2	65	48.0

PLOTTED

5448

San Clemente

44

N. side of Whittier

W2		80	46.5		
bl		100	44.5		
7		105	44.0		
b		109	44.6		
TP	1.91	45.74	1065	43.93	Center of bl
7		35	42.2		
bl		46	41.1		
EL		68	38.9		
N. side of Whittier					
EL		97	36.0		
bl		76	38.1		
7		63	39.4		
b		51	40.6		
7		44	41.3		
bl		32	42.5		
W2		08	44.9		

45.79

25' n of Whittier

WL	36	42.1
hh	56	40.1
y	86	37.1
b	116	34.1
y	134	32.3
hh	136	32.1
ER	137	32.0

50' n of Whittier

WL	104	35.3		
hh	124	33.3		
TP	5.92	3982	1184	33.90
h	94	30.4		
b	1040	29.4		
y	1080	29.0		
b	11.5	28.6		
ER	11.5	28.6		

PLOTTED

3982

San Clemente 45

75' 2 of Whittier

ER	25	30.3
hh	101	29.7
y	113	28.5
b	122	27.6
y	123	27.5
hh	120	27.8
WL	110	28.8

100' n of Whittier

WL	130	26.8
hh	128	27.0
y	123	27.5
b	114	28.4
y	100	29.8
hh	76	32.2
ER	58	34.0

	125'	39.82	Ref	Whittier
EL				2.3 37.5
bb				4.0 35.8
y				6.2 33.6
b				9.0 30.8
7				10.5 29.3
ll				11.0 28.8
WL				12.0 27.8
	150'		Ref	Whittier
WL				9.0 30.8
bb				7.3 32.5
y				5.7 34.1
b				4.8 35.0
y				3.8 36.3
bb				2.0 37.8
TIP	6,05'	45.43	0.44	39.36
EL				4.0 41.4

PLOTTED

	175'	45.43	Ref	Whittier	San Clemente
EL				1.8 43.6	
bb				3.4 42.0	
y				5.2 40.2	
b				6.5 38.9	
7				7.0 38.4	
bb				8.0 37.4	
WL				10.7 34.7	
	200'	n = 5	Ref	San Clemente (70')	
WL				7.0 38.4	
bb				4.8 40.6	
y				3.2 42.2	
b				3.0 42.4	
y				3.0 42.4	
ll				2.3 42.1	
EL				1.4 44.0	

46

4543

Sbb of Xenophon

Ed	23	43.1
bb	32	42.2
y	36	41.8
b	28	42.6
y	26	42.8
bb	42	40.2
W2	53	40.1

S'1/4 of Xenophon

W2	43	41.1
bb	30	42.4
y	23	43.1
b	30	42.4
y	40	41.4
bb	46	40.8
Ed	41	40.3

PLOTTED

4543

San Clemente

47

Center of Xenophon

Ed	60	38.4
bb	64	39.0
y	51	40.3
b	37	41.7
y	27	42.7
bb	22	43.2
W2	30	42.4

N'1/4 of Xenophon

W2	40	41.4
bb	29	43.0
y	31	42.3
b	50	40.4
y	63	39.1
bb	78	37.6
	85	36.9

45-43

Nbb of Xempton

Er	10.2	35.2
bb	9.6	35.8
y	7.8	37.6
b	5.6	39.8
y	5.6	41.8
bb	3.1	42.3
W2	6.0	39.4

N S of Xempton

W2	10.0	35.4
bb	7.0	38.4
y	6.7	38.7
b	6.6	38.8
y	8.8	36.6
bb	11.0	34.4
Er	11.2	34.2

TP	4.6	38.3	11.8	34.25
----	-----	------	------	-------

PLOTTED

3843

25' N of Xempton

Er	6.7	31.7
bb	7.8	30.6
y	8.0	30.4
b	9.0	29.4
y	9.2	29.2
bb	10.0	28.4
W2	11.4	27.0

50' N of Xempton

W2	12.5	26.1
bb	11.2	27.2
y	10.2	28.2
b	9.4	29.0
y	8.2	30.2
bb	7.1	31.3
Er	6.1	32.3

48

3843

75'	n of	Xenopha		
EL		14	37.0	
h		23	36.1	
y		34	35.0	
b		50	33.4	
y		74	31.0	
bh		80	29.4	
WL		104	28.0	
100'	n of	Xenopha		
WL		61	32.3	
bh		46	33.8	
y		24	36.0	
TP	8.62	<u>4635</u>	0.71	37.0
b		75	38.9	
h		50	41.4	
bh		45	41.9	
EL		36	42.8	
105'	n =	S 20° W	Fansen or W	
WL				336

PLOTTED

4635

San Clemente

49

20	35'	n of	Xenopha	
EL			00	46.4
h			07	45.7
y			25	43.9
b			39	42.5
y			54	41.0
bh			75	38.9
WL			102	36.2
150'	n of	Xenopha		
WL			103	36.1
h			60	40.4
y			45	42.1
b			27	43.7
y			27	43.7
h			15	44.9
EL			05	45.9

PLOTTED

4635

175

net

temp

Ed	5.0	41.4
bb	6.5	39.9
y	7.8	38.6
b	8.3	38.1
y	8.6	37.8
bl	9.7	36.7
WL	12.0	34.4

TP 3.00 3956 9.79 36.54

200' n = S L of Young

WL	15.2	24.4
bl	12.6	26.0
1/4	14.0	27.6
C	10.5	29.1
1/4	9.2	30.4
C	8.0	31.6
F	4.7	34.9
TP	2.90	35.66

SW H
Young

50

6.30	68.07		60.77
11.84	78.29	0.62	66.45
12.45	90.39	0.35	77.94
11.63	101.54	0.48	89.91
		4.75	96.79

Bm on Bridge
Taladira

Bm E H on
S Puella in
at Taladira

POSTED

Cross-section of Mendocena Bluff (60)
S of Anna Lake 1001 to 1002

1250 10929 96.79

S End of Mendocena Bluff

82

125 96.8

bb

117 97.6

γ

POSTED

105 98.8

b

85 100.8

γ

57 103.6

bb

31 106.2

γ

60 103.3

W2

74 101.9

10' Top of Pueblo Ls

W2

80 101.3

bb

86 100.7

γ

91 100.2

b

99 99.4

γ

107 98.6

bb

113 98.0

82

121 97.2

5th or 6th

Mendocena

Anna Lake

1001

82

bb

γ

b

γ

bb

W2

W2

bb

γ

b

γ

bb

82

25'

10929

neg

Pueblo

131 96.2

120 97.3

104 98.9

82 101.1

60 103.3

60 103.3

POSTED

60 103.3

50'

neg

Pueblo

15 107.8

40 105.3

64 102.9

84 100.9

104 98.9

124 96.9

140 95.3

	75'	109.29	Ref	Puella
EL				14.0 95.3
lh				11.8 97.5
y				9.7 99.6
b				7.4 101.9
y				5.0 104.3
lh				4.0 105.3
WR				2.0 107.3
	100'		Ref	
WR				0.0 109.3
ll				2.5 106.8
y				4.4 104.9
b				6.7 102.6
y				9.4 99.9
lh				12.1 97.2
EL				15.0 94.3
TP	239	111.17	0.54	118.78

	125'	111.17	Ref	Puella
WR				1.5 109.7
lh				4.0 107.2
y				6.0 105.2
b				8.0 103.2
y				10.8 100.4
lh				13.4 97.8
EL				16.0 95.2
	150'		Ref	
EL				15.5 95.7
ll				12.8 98.4
y				10.0 101.2
b				7.0 104.2
y				4.0 107.2
ll				3.0 108.2
WR				1.1 110.1

	175'	11117	n of	Puebla	
EL				146	96.6
ll				127	98.5
y				102	101.0
b				25	103.7
y				40	107.2
ll				1.8	109.4
WH				0.0	111.2
	200'		n of	Puebla	
EL				120	99.2
ll				150	101.2
y				71	104.1
b				36	107.6
TP	129	10897		349	107.8
	225'		n of	Puebla	
EL				130	96.0
ll				84	100.6
y				50	104.0
b				2.2	106.8

	250'	10897	n of	Puebla	
EL				140	95.0
ll				105	98.5
y				70	102.0
b				30	106.0
	275'		n of	Puebla	
EL				124	96.6
ll				83	100.7
y				50	104.0
b				15	107.5
	300'		n of	Puebla	
EL				100	99.0
ll				70	102.0
y				42	104.8
b				0.0	109.9
TP	620	11587		0.0	108.97

115.87
 200' n of Pueblo
 W2 1.4 114.5
 bl 3.2 112.7
 Y 5.1 110.8

225' n of Pueblo
 W2 0.3 115.6
 bl 1.9 114.0
 Y 1.4 114.5

250' n of Pueblo
 W2 0.4 115.7
 bl 2.7 113.2
 Y 3.4 110.5

275' n of Pueblo
 W2 0.6 115.3
 bl 2.2 113.7
 Y 4.6 111.3

115.87
 300' n of Pueblo
 W2 0.5 115.4
 bl 2.2 113.7
 Y 4.0 111.9

325' n of Pueblo
 W2 1.2 114.7
 bl 2.7 113.2
 Y 3.6 112.3

bl 5.0 110.9
 Y 8.0 107.9
 bl 10.2 105.7
 bl 12.0 102.9

350' n of Pueblo
 El 10.0 105.9
 bl 7.5 108.4
 Y 6.2 109.7
 bl 4.8 111.1
 Y 3.8 112.1
 bl 2.2 113.4
 W2 2.0 113.9

54
 Mendoza

POSTED

11587		center line	
375'	n of Puck		
wa		2.7	113.2
bb		3.6	112.3
y		4.5	111.4
b		5.6	110.3
y		6.6	109.3
bb		7.9	108.0
el		8.6	107.3
400' W Puck center {23.7 W 26.8 E}			
el		9.4	106.5
bb		8.6	107.3
y		7.8	108.1
b		6.2	109.7
y		5.0	110.9
bb		4.3	111.6
wa		3.6	112.3

11587		Mendocino		55
425'	n of Puck	center	{23.7 W 26.8 E}	
wa		4.6	111.3	
bb		5.2	110.7	
y		6.5	109.4	
b		7.8	108.1	
y		8.8	107.1	
bb		9.6	106.3	
el		10.5	105.4	
450' W Puck center {23.7 W 26.8 E}				
el		12.6	103.3	
bb		11.0	104.9	
y		10.5	105.4	
b		9.4	106.5	
y		8.4	107.5	
bb		7.6	108.3	
wa		7.0	108.9	

	475'	115.78	n of Pueblo center	72.37 W 72.63 E
WL			9.8	106.1
bl			9.8	106.1
y			11.2	104.7
b			12.3	103.6
y			13.2	102.7
TP	0.92	104.92	11.80	104.07
bl			3.0	102.0
EL			4.4	100.6
	500		n of Pueblo center	72.37 W 72.63 E
EL			5.8	99.2
bl			5.0	100.0
y			4.5	100.5
e			3.7	101.3
y			3.2	101.8
bl			2.4	102.6
WL			2.2	102.8

	525"	104.99	n of Pueblo center	72.37 W 72.63 E	56
WL			6.4	98.6	
bl			6.7	98.3	
y			6.5	98.5	
b			6.4	98.6	
y			6.6	98.4	
bl			7.3	97.7	
EL			8.5	96.5	
	550"		n of Pueblo center	72.37 W 72.63 E	
EL			11.0	94.0	
bl			10.5	94.5	
y			10.3	94.7	
b			10.9	94.1	
y			11.5	93.5	
bl			12.0	93.0	
WL			12.4	92.6	
TP	0.47	93.36	12.10	92.89	

9336

	575'	n a center	+239 w +268 e
WL		5.4	88.0
bl		5.6	87.8
γ		5.7	87.7
l		5.0	88.4
γ		3.4	90.0
bl		2.7	91.7
EL		2.3	91.1
	600'	n a center	+237 w +263 e
EL		7.2	86.2
bl		8.0	85.4
γ		9.0	84.4
l		10.0	83.4
γ		9.6	84.8
bl		9.4	84.0
WL		9.1	84.3

9336

Mendocino

57

	625'	n a center	+239 w +263 e
WL		11.1	82.3
bl		11.5	81.9
γ		12.2	81.2
l		12.8	80.6
	690'	82.08	12.18
γ			81.8
γ		1.7	80.4
bl		1.8	80.3
EL		1.5	80.6
	650'	n a center	+237 w +263 e
EL = Vulture an		11.2	70.9
bl		6.4	75.7
γ		4.4	77.7
l		3.8	78.3
γ		2.8	79.3
bl		2.0	80.1
WL		1.6	80.5

82.08

675'	n or bent	25.7 W 26.3 E
nl	2.6	79.5
bl	3.4	78.7
y	4.2	77.9
l	4.8	77.3
y	8.7	73.4
+5 = valley	9.0	73.1

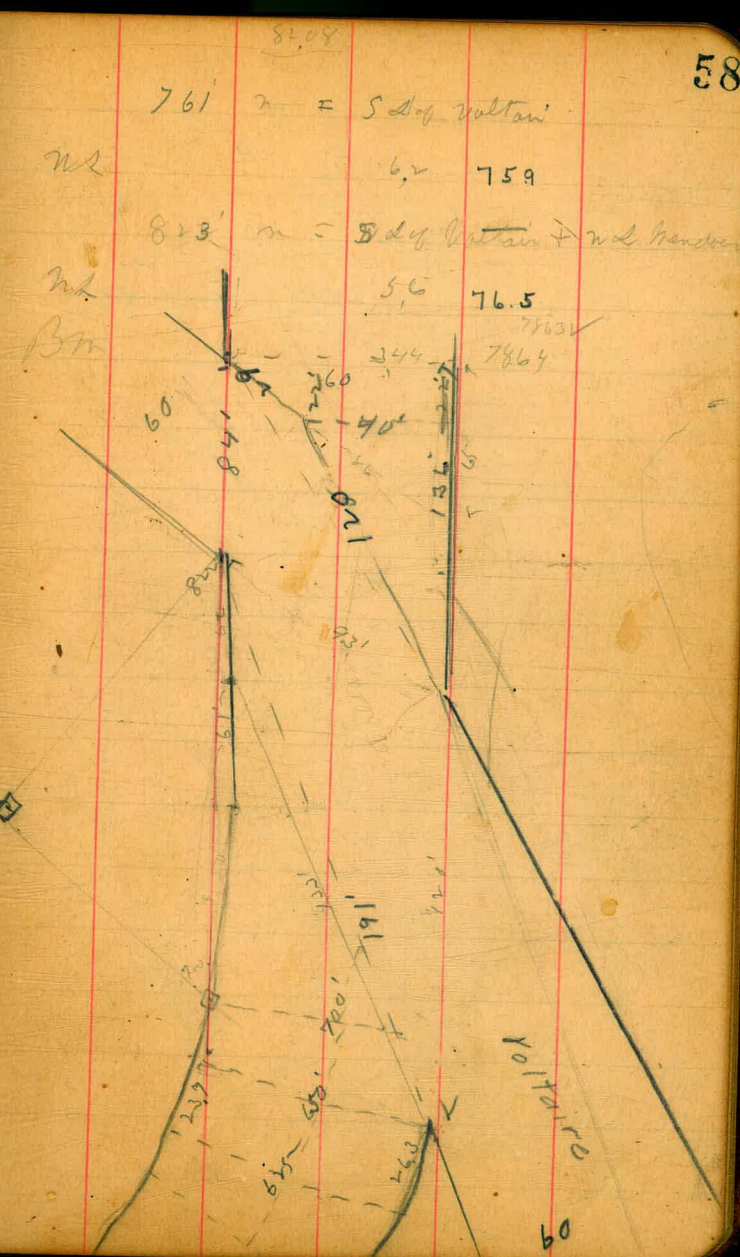
700' a bent

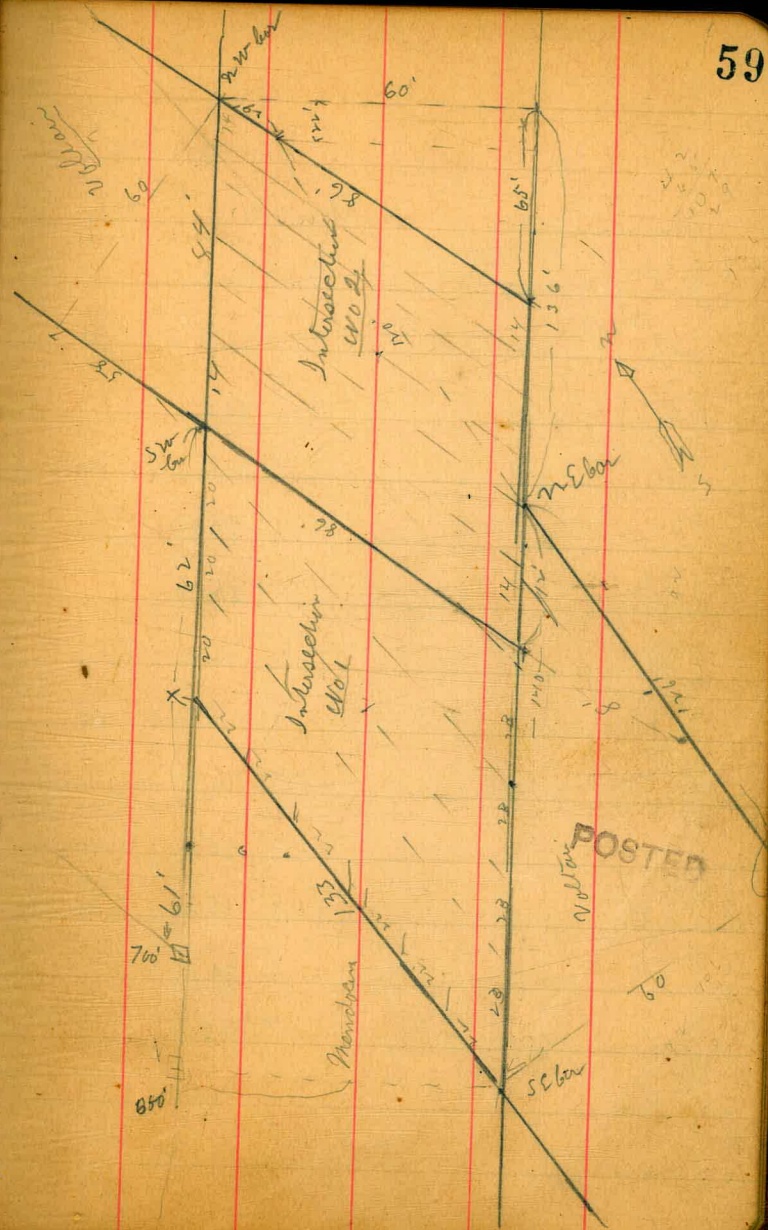
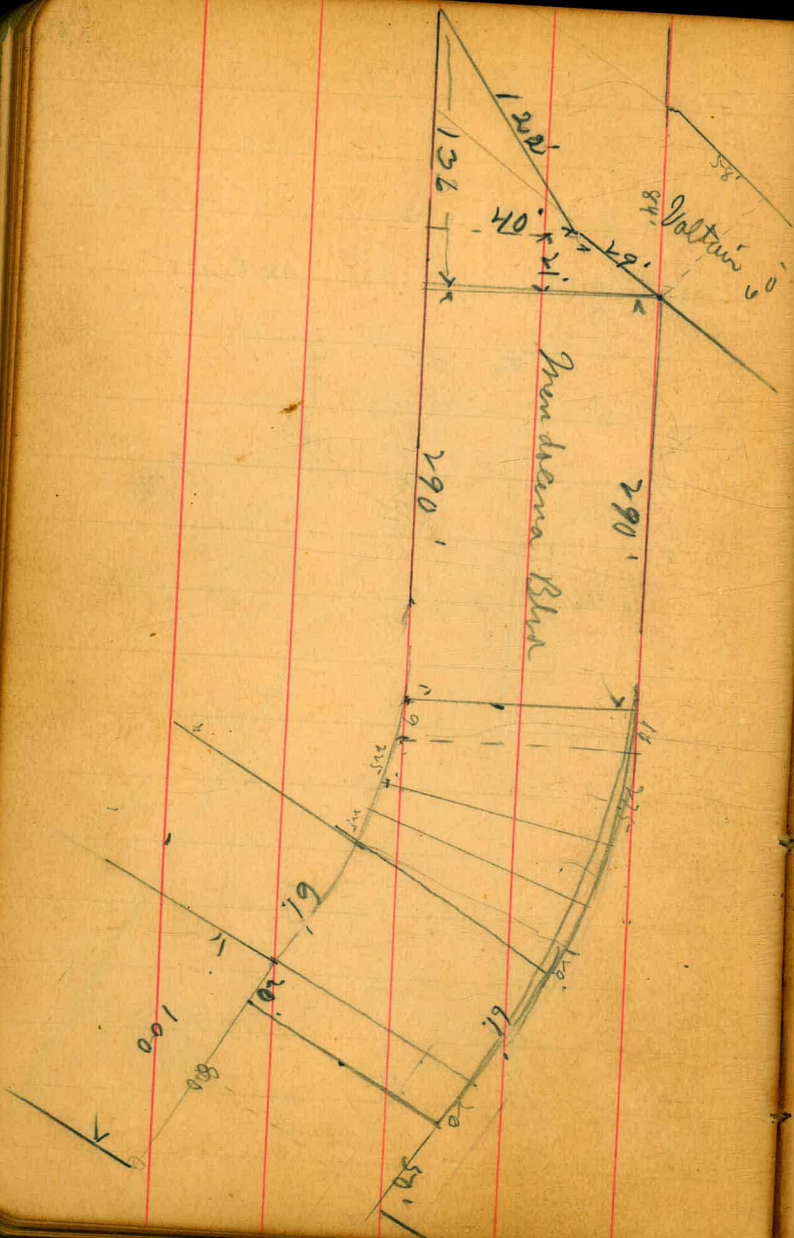
nl	3.6	78.5
bl	4.7	78.0
y	5.2	76.9
l	8.0	74.1
+5	8.8	

750' n

nl	3.2	76.9
bl	3.8	76.3
+5 = valley	7.4	74.7

Y 680.4 to O.L. on W.L.





Intersect of Mendocino & Volcan W01

226	8139	78.63	BM on Public Mendocino at Volcan.
S line of Volcan st			
Intersect is 133' mid on diagonal (60')			
EL		10.0	71.4
bl		8.7	72.7
y		8.0	73.4
b		7.2	74.2
y		4.6	76.8
bl		4.8	76.4
W2		4.4	76.8
S bl of Volcan st			
W2		5.0	76.4
bl		6.3	75.1
y		6.8	75.6
b		7.3	74.1
y		7.8	73.6
bl		8.3	73.1
EL		9.6	70.8

8139

Mendocino Blm

60

S 1/4 of Volcan

EL	9.9	71.5
bl	8.5	72.9
y	7.5	73.9
b	6.8	74.6
y	6.4	75.0
bl	6.0	75.4
W2	5.4	76.0
bank of Volcan		
W2	4.8	76.6
bl	5.4	76.0
y	5.8	75.6
b	6.3	75.1
y	6.8	74.6
bl	8.0	73.4
EL	8.8	72.6

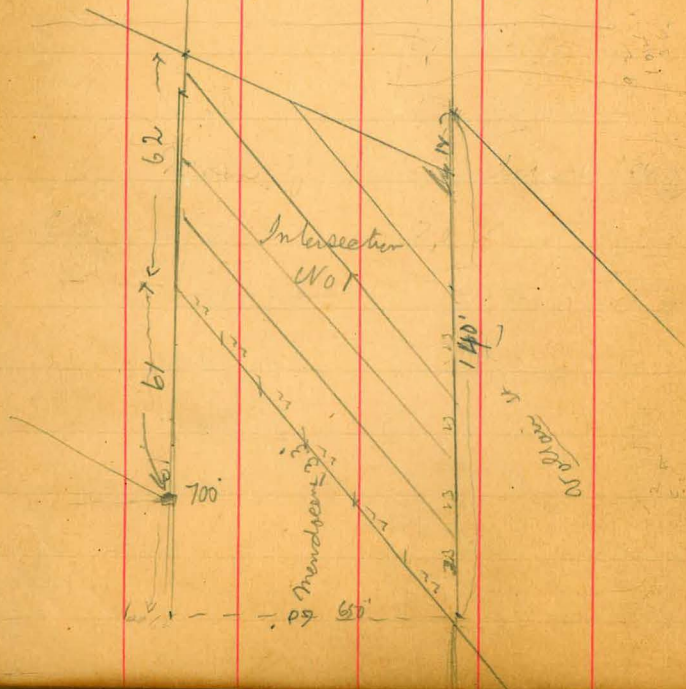
8139

N/4 of Valtai

EL	84	73.0
bl	77	77.7
y	69	74.5
b	62	75.2

N/4 of Valtai

EL	76	73.8
----	----	------



Intersection of Valtai & Mendocino 8139

61

S/4 of Valtai

EL	70	74.4
bl	65	80.9
y	63	75.1
b	58	75.6
y	55	75.9
bl	52	76.2
W2	47	76.7

S/4 of Valtai

W2	42	77.2
bl	47	77.7
y	50	76.4
b	54	76.0
y	57	76.7
bl	60	75.4
EL	61	75.3

8139

S 1/4 of Valtan

E2	5.8	75.6
bb	5.8	75.6
y	5.5	75.9
b	5.0	76.4
y	4.6	76.8
ll	4.2	77.2
w2	3.8	77.6

center of Valtan

w2	3.3	78.1
ll	3.8	77.6
y	4.3	77.1
b	4.7	76.7
y	5.1	76.3
ll	5.3	75.9
el	6.0	75.4

8139

N 1/4 of Valtan

E2	5.8	75.6
bb	5.4	76.0
y	5.1	76.3
b	4.6	76.8
y	3.9	77.5
ll	3.3	78.1
w2	3.0	78.4

N 1/4 of Valtan

w2	2.8	78.6
ll	3.3	78.1
y	3.7	75.7
b	3.8	75.6
y	5.6	75.8
ll	6.3	75.1
el	6.5	74.9

POSTED

62

N line of Voltain (Intascon Vor)

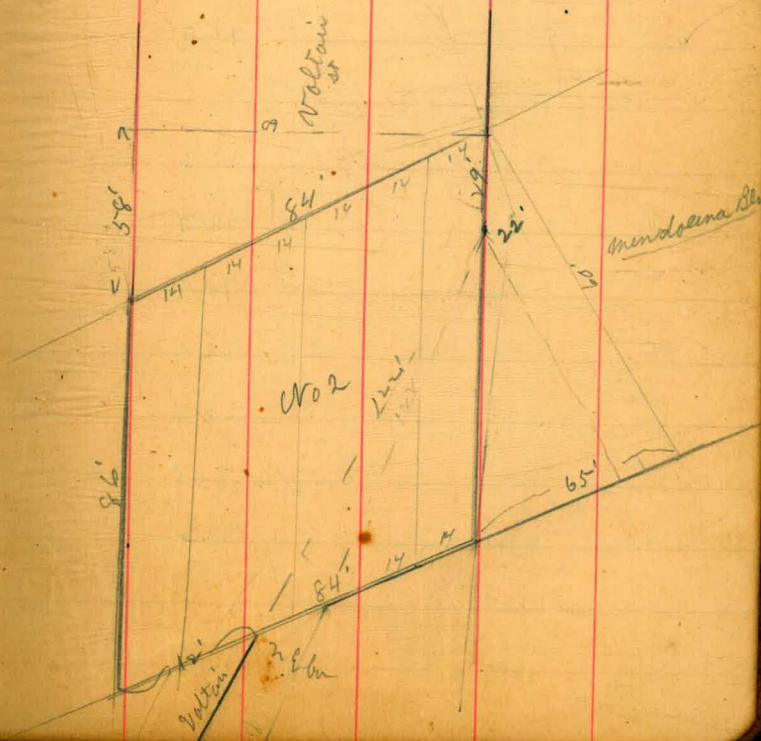
EQ	83	73.1
bl	82	73.2
y	9,1	72.3
b	8,4	73.0
y	5,8	76.6
bl	4,4	77.0
W2	3,0	78.4

Square across Mendocena at N W bn

W2	3,0	78.4
bl	6,2	75.2
y	6,5	74.9
b	8,5	72.9
y	8,8	72.6
bl	11,6	69.8
EQ	16,0	65.4

2 2' S of last line taken

EQ		12,8	68.6
bl		12,4	69.0
y		9,9	71.5
b		7,3	74.1
y = n d vollen		5,8	75.6
7 D	1,87	72,51	5,75
			75,64



77.57

	25'	n of	n w	bar of	Voltan
WA			35		74.0
hh			36		73.9
γ			48		72.7
b			37		73.8
γ			38		73.7
hh			80		69.5
EL			106		76.9

	50'	n of	Voltan
EL		85	69.0
hh		68	70.7
γ		53	72.2
b		48	72.7
γ		46	69.9
hh		57	71.8
WA		50	72.5

77.51

Mendoza

	75'	n of	Voltan
WA		52	72.3
hh		50	72.5
γ		56	71.9
b		66	70.9
γ		75	70.0
hh		80	69.5
EL		85	69.0

	100'	n of	Voltan
EL		110	66.5
hh		105	67.0
γ		94	68.1
b		83	69.2
γ		68	70.7
hh		46	70.9
WA		59	71.6

		7757		
	125'	n of	Valtan	
w2			6.3	71.2
bl			7.0	70.2
y			9.8	67.7
b			12.2	65.3
	150'	n of	Valtan	
w2			6.9	70.6
bl			10.0	67.5
y			13.0	64.5
	175'	n of	Valtan	
w2			8.8	68.7
bl			10.2	67.3
y			12.5	65.0
TP	0.55	6693	11.3	63.8
	125'	n of	Valtan	
E2			6.7	60.2
bl			4.8	62.1
y			3.0	63.9

		6693	Mendocino	
	150'	n of	Valtan	
E2			11.2	55.7
bl			8.5	58.4
y			7.0	59.9
b			5.1	61.8
	175'	n of	Valtan	
E2			13.8	53.1
bl			10.6	56.3
y			8.0	58.9
b			4.4	62.5
	200'	n of	Valtan	
E2			13.3	53.6
bl			11.0	55.9
y			9.0	57.9
b			5.9	61.0
y			3.0	63.9
bl			2.0	64.9
w2			0.8	66.1

6693

225' n of Voltan

W2	1.8	65.1
W1	3.6	63.3
Y	5.5	61.4
b	7.2	59.7
Y	9.0	57.9
W1	9.7	57.2
W2	10.3	56.6

250' n of Voltan

W2	6.8	60.1
W1	6.9	60.0
Y	6.7	60.2
b	6.2	60.7
Y	5.6	61.3
W1	3.7	63.2
W2	1.9	65.0

6693

Mandocaya

66

275' n of Voltan

W2	1.8	65.1
W1	3.4	63.5
Y	3.8	63.1
b	4.5	62.4
Y	4.2	62.7
W1	4.0	62.9
W2	4.3	62.6

270' n of Voltan - Boundary of house to R

W2	2.3	64.6
W1	2.4	64.5
Y	3.0	63.9
b	3.3	63.6
Y	3.3	63.6
W1	2.6	64.3
W2	1.8	65.1

POSTED

6693

	300	ht of Voltm	+ 11' on W + 9' on E
W2		14	65.5
hh		22	64.7
"		30	63.9
b		30	63.9
"		26	64.3
hh		18	65.1
EL		16	65.3
	325'	ht of Voltm =	+ 27.5' on W + 22.5' on E
EL		36	63.3
hh		36	63.3
"		26	63.3
b		32	63.7
"		26	64.3
hh		22	64.7
W2		17	65.5

6693

Mondki-a 67

	350'	ht of Voltm =	+ 27.5' on W + 22.5' on E
W2		13	65.6
hh		25	64.4
"		30	63.9
b		37	63.2
"		40	62.9
hh		42	62.7
EL		44	62.5
	375'	ht of Voltm =	+ 27.5' on W + 22.5' on E
EL		52	61.7
hh		50	61.9
"		47	62.2
b		40	62.9
"		31	63.8
hh		17	65.2
W2		08	66.1
TP	667	72.85	0.75 66.18

7285

400' m. of line

	+ 275' w	
	+ 225' e	
W2	5.2	67.7
bb	7.4	65.5
y	8.3	64.6
b	9.0	63.9
y	10.3	62.6
bb	11.3	61.6
E2	11.6	61.3
	425' m. bench	
	+ 275' w	
	+ 225' e =	
E2 = Sbb anion	11.9	61.0
bb	10.8	62.1
y	9.1	63.8
b	8.2	64.7
y	7.6	65.3
bb	6.0	66.9
W2	4.5	68.4

7285

435' at bench = S d of Ovalen St (60')

Mendocino 68

	+ 275' w	
	+ 225' e	
W2	4.5	68.4
bb	5.0	67.9
y	7.2	65.7
b	8.4	64.5
y	9.7	63.5
bb	10.7	62.2
E2 = Sbb anion	11.9	61.0
	Sbb of Ovalen	(61' across)
E2	11.5	61.4
bb	10.9	62.0
y	10.0	62.9
b	8.2	64.7
y	6.6	66.3
bb	4.5	68.4
W2	2.9	70.0

22.85
S¹/₄ of Avalon

W2	2.8	70.1
bl	3.7	77.7
γ	7.2	75.7
b	8.6	64.3
γ	9.9	63.0
bl	10.9	62.0
E2	11.7	61.2

Center of Avalon

E2	12.0	60.9
bl	10.7	62.2
γ	10.0	62.9
b	8.4	64.5
γ	6.8	66.1
bl	4.6	68.3
W2	2.5	70.4

22.85 Mendocino
N¹/₄ of Avalon

W2	2.6	70.3
bl	4.8	68.1
γ	6.6	66.3
b	8.6	64.3
γ	9.6	63.3
bl	10.8	62.1
E2	12.2	60.7

W¹/₄ of Avalon

E2	12.0	60.9
bl	10.4	62.5
γ	9.5	63.4
b	8.0	64.9
γ	6.2	66.7
bl	4.7	68.2
W2	2.9	70.0

72.85
N. side of Avalon

W2	3.4	69.5
bb	5.4	67.5
y	6.9	66.0
b	8.7	64.2
y	9.8	63.1
bb	10.8	62.1
Ed	11.7	61.2

20' N of Avalon = End of Burn

Ed	11.6	61.3
bb	10.2	62.7
y	9.3	63.6
b	8.1	64.8
y	6.6	66.3
bb	5.6	67.3
W2	4.2	68.7

72.85
35' N of Avalon

W2	4.9	68.0
bb	6.0	66.9
y	7.2	65.7
b	8.3	64.6
y	9.3	63.6
bb	10.8	62.9
Ed	10.8	62.1

70' N of Avalon = End of Burn

Ed	9.2	63.7
bb	8.3	64.6
y	7.6	65.3
b	6.3	66.6
y	5.2	67.7
bb	4.8	68.1
W2	4.2	68.7
Ed	4.18	68.67

100' N of Avalon on East

Ed	7.4	66.6
----	-----	------

70

POSTED

SW to Burn

60
 Cross-section of Valtain St (60')
 Pueblo line 205 East to Soto St

1.04	73.24		72.20
1.06	62.07	12.23	44.1
1.84	<u>51.53</u>	11.78	30.29
		4.80	46.73

West line of Loma Alta No 1

n2		6.1	45.4
lh		5.8	45.7
y	POSTED	6.2	45.3
b		5.4	46.1
y		6.1	45.4
bl		6.2	45.3
SL		5.6	45.9

Common
 Pueblo Post

515.3

Valtain

71

50' E of Pueblo line

SL		5.7	45.8
lh		5.6	45.9
y		6.0	45.5
b		5.5	46.0
y		6.0	45.5
lh	POSTED	5.7	45.8
n2		5.7	45.8

100' E = W. l. of Sea Side St (60')

y		6.1	45.4
n2		6.1	45.4
lh		6.0	45.5
y		5.5	46.0
b		5.8	45.7
y		5.4	46.1
bl		5.3	46.2
SL			

5153

Wbb of Sea Side

SL	5.4	46.4
bl	5.6	45.9
γ	5.8	45.7
b	5.3	46.2
γ	5.9	45.6
bl	6.5	45.0
nl	6.0	45.5

W¹/₄ of Sea Side

nl	6.5	45.0
bl	6.0	45.5
γ	5.7	45.8
b	5.4	46.1
γ	5.7	45.8
bl	5.1	45.8
SL	5.3	46.2

5153

Kaltan

72

Center of Sea Side

SL	5.7	46.4
bl	4.6	46.9
γ	5.5	46.0
b	5.0	46.5
γ	5.5	46.0
bl	5.6	45.9
nl	5.8	45.7

E¹/₄ of Sea Side

nl	6.3	45.2
bl	5.9	45.6
γ	5.5	46.0
b	5.0	46.5
γ	5.0	46.5
bl	5.2	46.3
SL	5.4	46.1

5-153

	E of	Sea Side	
S2		5.2	46.3
bb		5.3	46.0
γ		5.0	46.5
b		5.0	46.5
γ		5.8	45.7
bb		6.3	45.2
W2		5.9	45.6

	Edin of	Sea Side	
W2		5.8	45.7
bb		5.7	45.8
γ		5.8	45.7
bb		5.1	45.4
γ		5.3	45.2
bb		5.2	45.3
S2		5.1	45.4

5-153

Vollan

73

	25'	E of	Sea Side	
S2			4.7	46.8
bb			4.0	47.5
γ			4.9	46.6
b			4.6	46.9
γ			5.0	46.5
bb			5.1	46.4
W2			5.4	46.1

	T.P	11.20	61.49	1.24	50.29
		50'	E of	Sea Side	
W2			11.6	49.9	
bb			8.3	53.2	
γ			10.0	51.5	
b			10.8	50.7	
γ			9.7	51.8	
bb			9.2	51.2	
S2			9.2	51.3	

	6149			
	100'	E of	Sea Side	
SL			60	55.5
bl			57	55.8
Y			55	56.0
b			52	56.3
Y			54	56.1
bl			53	56.2
n2			56	56.9
	150'	E of	Sea Side	
n2			27	58.8
bl			27	58.8
Y			27	58.8
b			27	58.8
Y			26	58.9
bl			29	58.6
SL			27	58.8
TP	1183	7312	020	61.29

7322

	7312			
	200'	E = W of	Ehwananda	(50') (?)
SL			119	61.2
bl			120	61.1
Y			120	61.1
b			121	61.0
Y			122	60.9
bl			122	60.9
n2			122	60.9
		W of	Ehwananda	
n2			117	61.4
bl			117	61.4
Y			116	61.5
b			117	61.4
Y			115	61.6
bl			117	61.7
SL			112	61.8

74

73!v

w 1/4 of Elwanada

SL	11.00	63.1
bl	11.0	62.1
y	11.0	62.1
b	11.0	62.1
y	11.0	62.1
bl	11.2	61.9
nl	11.2	61.9

Center of Elwanada

nl	10.7	62.4
bl	10.6	62.5
y	10.5	62.6
b	10.4	62.7
y	10.2	62.9
bl	10.5	62.6
SL	10.0	62.1

73!v

E 1/4 of Elwanada

SL	9.6	63.5
bl	9.8	63.3
y	9.8	63.3
b	9.8	63.3
y	10.0	63.1
bl	10.0	63.1
nl	10.0	63.1

E 1/4 of Elwanada

nl	9.4	62.7
bl	9.4	63.7
y	9.4	63.7
b	9.3	63.8
y	9.2	63.9
bl	9.3	63.8
SL	9.0	64.1

73.12
E line of Edwards st

SA	8.6	64.5
bb	8.6	64.5
y	8.6	64.5
b.	8.8	64.3
y	8.8	64.3
bb	8.8	64.3
bb	8.9	64.2
nd	8.6	64.5

50' E of Edwards

nd	5.7	67.4
bb	5.8	67.3
y	5.8	67.3
b	5.7	67.4
y	5.8	67.3
bb	5.7	67.4
SA	5.3	67.8

73.12
78' E of Edwards = Wd Gungot 76

SA	3.1	70.0
bb	4.0	69.1
y	4.2	68.9
b	4.0	69.1
y	4.0	69.1
bb	4.2	68.9
nd	3.8	69.3

Wbb of Gungot

nd	3.1	70.0
bb	3.8	69.3
y	3.4	69.7
b	3.4	69.7
y	3.2	69.9
bb	3.2	69.9
SA	2.8	70.3

7312

W 1/4 of Gungot

SL	25	70.6
bb	30	70.1
y	30	70.1
b	30	70.1
y	30	70.1
bb	31	70.0
nl	25	70.6

Center of Gungot

nl	20	71.1
bb	25	70.6
y	26	70.5
b	29	70.7
y	26	70.5
bb	25	70.6
SL	20	71.1

7312

E 1/4 of Gungot

SL	18	71.3
bb	22	70.9
y	22	70.9
b	22	70.9
y	22	70.8
bb	21	71.0
nl	16	71.5

E 1/4 of Gungot

nl	11	72.1
bb	17	71.4
y	17	71.4
b	14	71.7
y	16	71.5
bb	16	71.5
SL	14	71.7

TP

1250

8471

092

7220

BM

84.71

E line of Guizot

SL	12.5	72.2
bb	12.5	72.2
y	12.7	72.0
bl	12.5	72.2
y	12.5	72.2
bb	12.7	72.0
nl	12.5	72.2
22' E of Guizot		
nl	11.4	73.3
bb	11.9	72.8
y	11.7	73.0
b	11.4	73.3
y	11.4	73.3
bb	11.0	73.7
SL	11.0	73.7

84.71

Valtari

78

72' E of Guizo + = W of Soto (7)

SL	8.3	76.4
bb	8.5	76.2
y	8.4	76.3
b	8.4	76.3
y	8.5	76.2
bb	8.8	75.9
nl	8.3	76.4
W of Soto		
nl	7.7	77.0
bb	8.1	76.6
y	8.0	76.7
b	7.7	77.0
y	7.7	77.0
bb	8.0	76.7
SL	7.7	77.0

8471

W 1/4 of Sato

sd	70	77.7
bb	76	77.1
y	70	77.7
b	70	77.7
y	72	77.5
bb	77	77.0
n2	70	77.7
center of Sato		
n2	67	78.0
bb	69	77.8
y	66	78.1
b	66	78.1
y	65	78.2
bb	68	77.9
sd	66	78.1

8471

Valtain

79

E 1/4 of Sato

sd	60	78.7
bb	62	78.5
y	60	78.7
bb	60	78.7
y	60	78.7
bb	62	78.5
n2	60	78.7
E bb of Sato		
n2	59	79.3
bb	57	79.0
y	54	79.3
b	52	79.1
y	55	79.2
bb	57	78.8
sd	54	79.3

POSTED

8471

E line of Soto st

sd	50	79.7
bl	53	79.4
y	50	79.7
b	48	79.9
y	52	79.5
bl	52	79.5
nl	48	79.9

50' E of Soto st

nl	24	82.3		
bl	24	82.3		
y	22	82.5		
b	24	82.3		
y	25	82.2		
bl	26	82.1		
sd	27	82.5		
TP	904	9189	1,86	82.55

Continued in Book

333

Etranda
Soto
Balinas

270.00
62.25
207.75

130.00
62.25
200.00
267.75
32.25
20
112.25

Ⓟ

DISTANCES FROM CENTER OF ROADWAY FOR CROSS-SECTIONING.

FOR SINGLE TRACK EMBANKMENT.

ROADWAY 14 FEET WIDE. SIDE SLOPES 1½ TO 1.

	0	.1	.2	.3	.4	.5	.6	.7	.8	.9	
0	7.0	7.2	7.3	7.5	7.6	7.8	7.9	8.1	8.2	8.4	0
1	8.5	8.7	8.8	9.0	9.1	9.3	9.4	9.6	9.7	9.9	1
2	10.0	10.2	10.3	10.5	10.6	10.8	10.9	11.1	11.2	11.4	2
3	11.5	11.7	11.8	12.0	12.1	12.3	12.4	12.6	12.7	12.9	3
4	13.0	13.2	13.3	13.5	13.6	13.8	13.9	14.1	14.2	14.4	4
5	14.5	14.7	14.8	15.0	15.1	15.3	15.4	15.6	15.7	15.9	5
6	16.0	16.2	16.3	16.5	16.6	16.8	16.9	17.1	17.2	17.4	6
7	17.5	17.7	17.8	18.0	18.1	18.3	18.4	18.6	18.7	18.9	7
8	19.0	19.2	19.3	19.5	19.6	19.8	19.9	20.1	20.2	20.4	8
9	20.5	20.7	20.8	21.0	21.1	21.3	21.4	21.6	21.7	21.9	9
10	22.0	22.2	22.3	22.5	22.6	22.8	22.9	23.1	23.2	23.4	10
11	23.5	23.7	23.8	24.0	24.1	24.3	24.4	24.6	24.7	24.9	11
12	25.0	25.2	25.3	25.5	25.6	25.8	25.9	26.1	26.2	26.4	12
13	26.5	26.7	26.8	27.0	27.1	27.3	27.4	27.6	27.7	27.9	13
14	28.0	28.2	28.3	28.5	28.6	28.8	28.9	29.1	29.2	29.4	14
15	29.5	29.7	29.8	30.0	30.1	30.3	30.4	30.6	30.7	30.9	15
16	31.0	31.2	31.3	31.5	31.6	31.8	31.9	32.1	32.2	32.4	16
17	32.5	32.7	32.8	33.0	33.1	33.3	33.4	33.6	33.7	33.9	17
18	34.0	34.2	34.3	34.5	34.6	34.8	34.9	35.1	35.2	35.4	18
19	35.5	35.7	35.8	36.0	36.1	36.3	36.4	36.6	36.7	36.9	19
20	37.0	37.2	37.3	37.5	37.6	37.8	37.9	38.1	38.2	38.4	20
21	38.5	38.7	38.8	39.0	39.1	39.3	39.4	39.6	39.7	39.9	21
22	40.0	40.2	40.3	40.5	40.6	40.8	40.9	41.1	41.2	41.4	22
23	41.5	41.7	41.8	42.0	42.1	42.3	42.4	42.6	42.7	42.9	23
24	43.0	43.2	43.3	43.5	43.6	43.8	43.9	44.1	44.2	44.4	24
25	44.5	44.7	44.8	45.0	45.1	45.3	45.4	45.6	45.7	45.9	25
26	46.0	46.2	46.3	46.5	46.6	46.8	46.9	47.1	47.2	47.4	26
27	47.5	47.7	47.8	48.0	48.1	48.3	48.4	48.6	48.7	48.9	27
28	49.0	49.2	49.3	49.5	49.6	49.8	49.9	50.1	50.2	50.4	28
29	50.5	50.7	50.8	51.0	51.1	51.3	51.4	51.6	51.7	51.9	29
30	52.0	52.2	52.3	52.5	52.6	52.8	52.9	53.1	53.2	53.4	30
31	53.5	53.7	53.8	54.0	54.1	54.3	54.4	54.6	54.7	54.9	31
32	55.0	55.2	55.3	55.5	55.6	55.8	55.9	56.1	56.2	56.4	32
33	56.5	56.7	56.8	57.0	57.1	57.3	57.4	57.6	57.7	57.9	33
34	58.0	58.2	58.3	58.5	58.6	58.8	58.9	59.1	59.2	59.4	34
35	59.5	59.7	59.8	60.0	60.1	60.3	60.4	60.6	60.7	60.9	35
36	61.0	61.2	61.3	61.5	61.6	61.8	61.9	62.1	62.2	62.4	36

Calculated by Julien A. Hall, M. Am. Soc. C. E.