

9

TRANSIT

F. B. 35

Table showing the difference of latitude and departure in running 80 chains at any course from 1 to 60 minutes.

*Return to City Engineers Office  
City Hall, San Diego, Cal.*

Minutes.	Lks.	Minutes.	Lks.	Minutes.	Lks.
1	2½	21	49	41	95½
2	4½	22	51½	42	98
3	7	23	53½	43	100½
4	9½	24	56	44	102½
5	11½	25	58½	45	105
6	14	26	60½	46	107½
7	16½	27	63	47	109½
8	18½	28	65½	48	112
9	21	29	67½	49	114½
10	23½	30	70	50	116½
11	25½	31	72½	51	119
12	28	32	74½	52	121½
13	30½	33	77	53	123½
14	32½	34	79½	54	126
15	35	35	81½	55	128½
16	37½	36	84	56	130½
17	39½	37	86½	57	133
18	42	38	88½	58	135½
19	44½	39	91	59	137½
20	46½	40	93½	60	140

PUBLISHED BY

**EDWARD DENNY & CO.**

DRAWING PAPER & MATERIAL, MATHEMATICAL INSTRUMENTS, ETC.,  
STATIONERS AND PRINTERS,  
SAN FRANCISCO, CAL.

Table for Running on Slopes.

In the following table the first column shows the angle, the second, the number of links to be added to a chain on the slopes, to make one chain, horizontal measurement.

Angle.	Cor. in links	Angle.	Cor. in links.	Angle.	Cor. in links.	Angle.	Cor. in links.
°		°		°		°	
4	0.24	11	1.88	18	5.14	25	10.54
5	0.38	12	2.24	19	5.76	26	11.26
6	0.55	13	2.63	20	6.42	27	12.24
7	0.76	14	3.06	21	7.11	28	13.37
8	0.98	15	3.53	22	7.85	29	14.34
9	1.24	16	4.02	23	8.64	30	15.47
10	1.55	17	4.56	24	9.47	35	22.07

*Return to City Engineers Office  
City Hall, San Diego, Cal.*

*98 + 52*

MICROFILMED  
DEC 4 1964

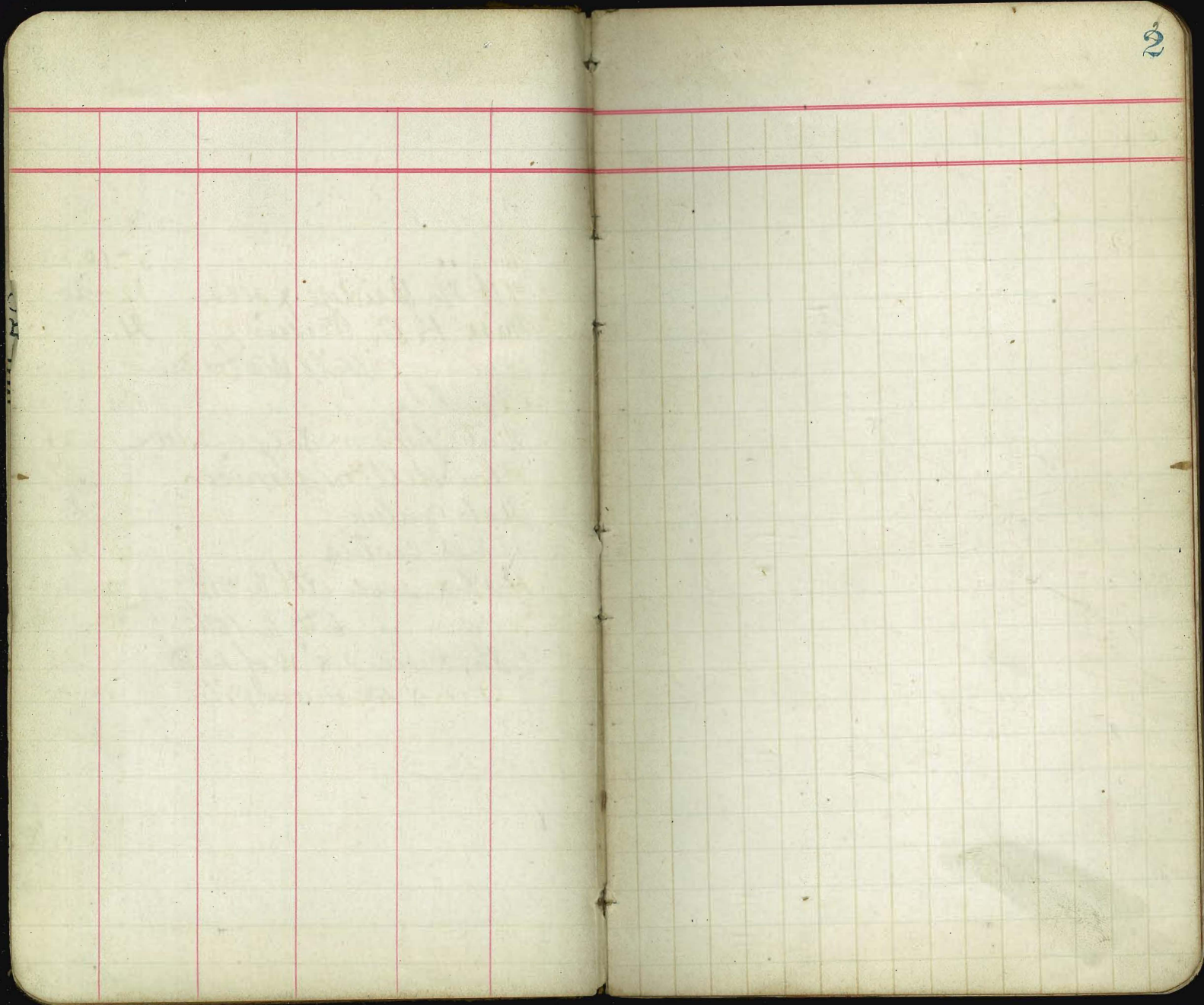


P.L. 1178	3-7
" "	8-10
4th St Bridge x sees	12-20
Miss H.O. Tessins	21.
Orange Hill Water Man	
levels	22 & 23
Water pipe on Sargent Ave	24
Blaisdell & Morrison	27
31st Center	29
32nd Center	31
H St x sees alt to 4th	34-38
" " " " 6th to 16th	39-42
E St, x see 200' W of 20th	43
S 21st x see Burrow Pit	44-45

DRAWING  
SIn t  
links to be a

Angle. Cor.

0	0
4	0
5	0
6	0
7	0
8	0
9	1
10	1





Preliminary survey around  
Pueblo lot 1178

Jan 18 1872

Humboldt Mining  
William } Chain 3  
Shaw }  
Van Hook }

Sta	Ref	Course	M.C.
-----	-----	--------	------

19+35

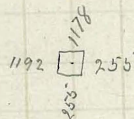
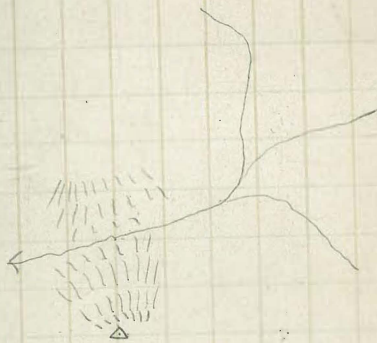
18+0  $\Delta$

13+09  $\Delta$

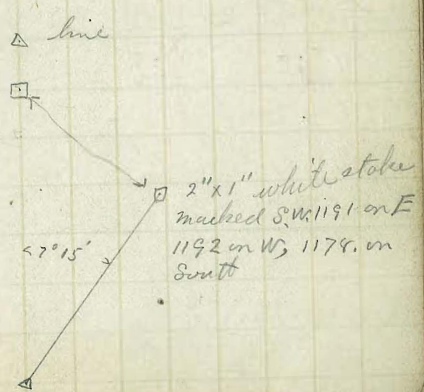
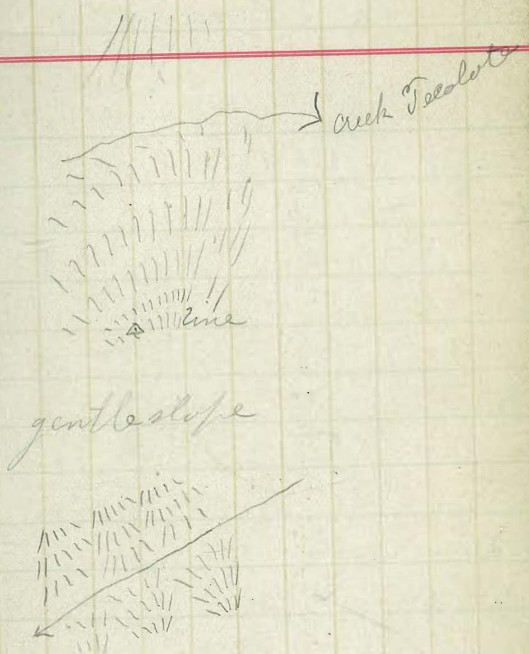
top of hill

$\Delta$   $0^{\circ} 0'$  East  $N 76^{\circ} 0' E$

Beginning at a stake in 4th Ave  
bet 7th & 8th Sts in Morena, stake  
is marked 1192 on north, 255 on West<sup>and</sup>  
<sup>South</sup> and 1178 on East, stake 30" inches  
above ground 4x4" square. Run east on  
a random line mag var  $14^{\circ}$



Sta	Ref	Course	M.C.
25			
17+70			
17		Top of flat hill west of Tealote	
6+40		Bottom of canon	
1			
0		S89°23'E N76°15'E	
31+73.5	6°38'N	S89°23'E N76°15'E, (calculated back course and produced line east)	
29	7°15'R	S82°45'E N82°0'E	Some local attraction at this point





Sta	Ref	Course	M.C.
-----	-----	--------	------

26			
----	--	--	--

17			
----	--	--	--

12			
----	--	--	--

10			
----	--	--	--

400			
-----	--	--	--

0			
---	--	--	--

		514° 0' W	
	50° 37' W	along East line	1178

26			
----	--	--	--

5

Scarf stake in mid of Stone (marked 1178 on N.W. side) → creek



Struck 3' north of West of stake.



30 x 4 x 4" stake in mound of rock, marked 1191 on N.W. face

Sta	Ref	Course	MC
13+0			
+80			
10+40			
4+50			
0			

13+0

+80

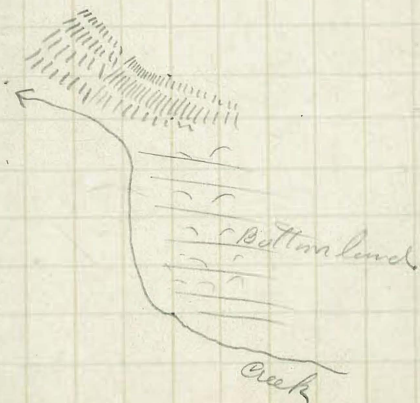
10+40

4+50

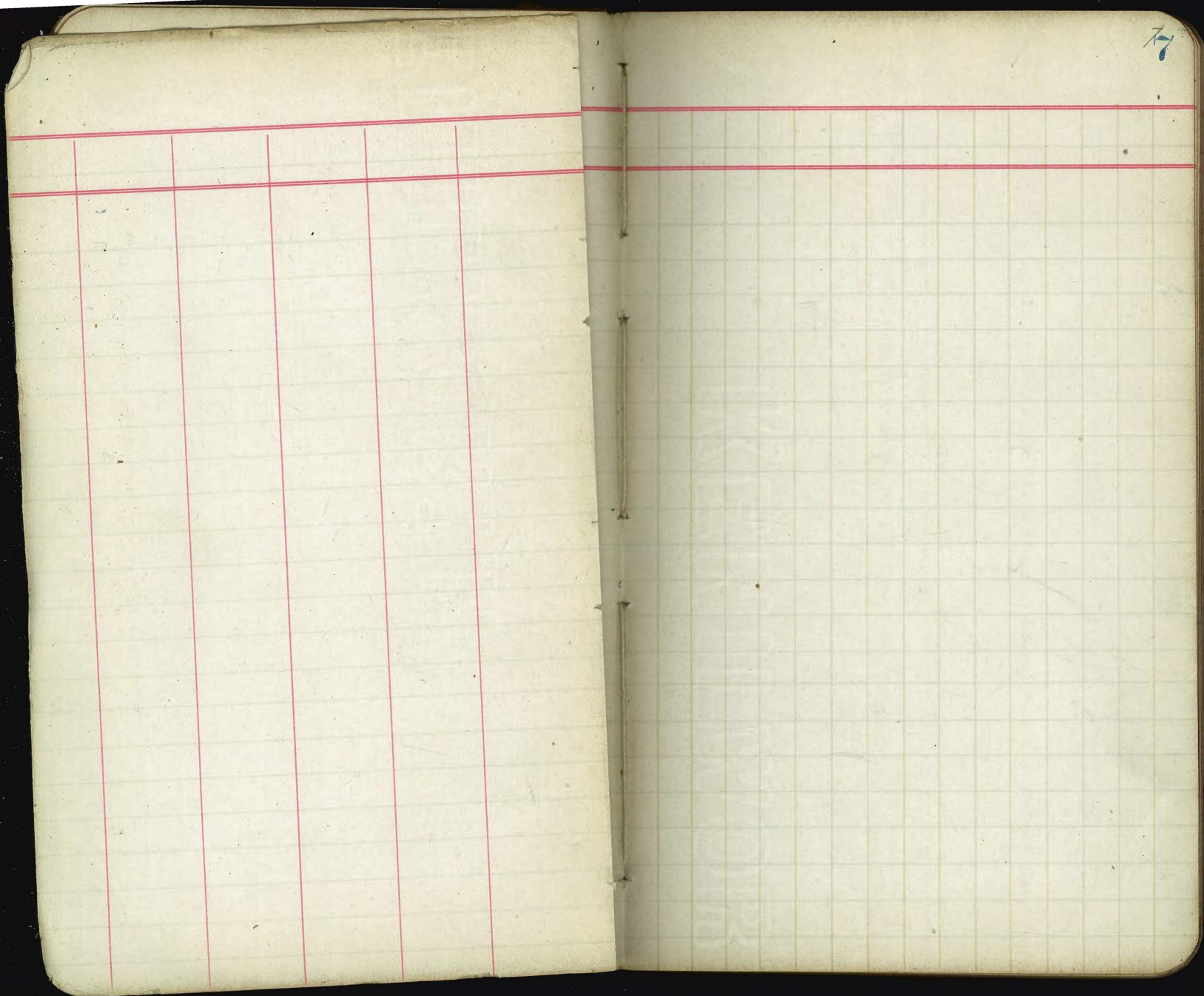
0

N 89° 23' W

flood at the marker 13+00







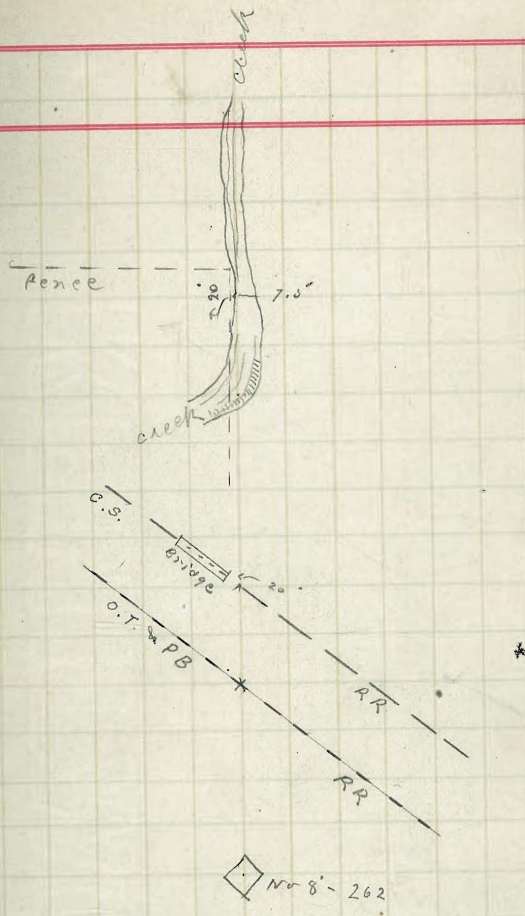
Sta	Def	course	M.C.
21+70	fence north line		
21+50			
20+52			
5+96.5			
4+71.5			
0			

or

N 35° 15' E

N 22° 0' E

Beginning at the northerly corner of Pueblo lot-262 by poles muf, or stakes set by O.N. Sanford, marked Park no 8, 262 of southerly face, B.S. to westerly cor-262 Riv, and produced line about





Sta	Ref	Course	M.C.
-----	-----	--------	------

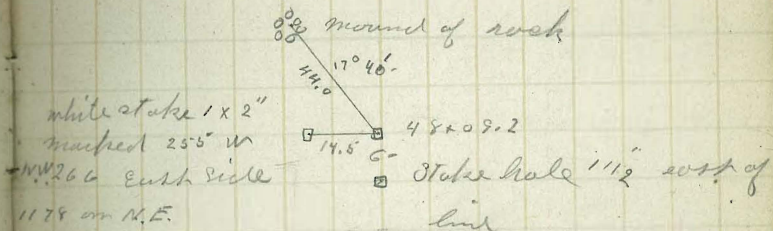
48+09.2	<sup>0</sup> 90° N	N 54° 45' W	N 68° W
---------	-----------------------	-------------	---------

39+5.5

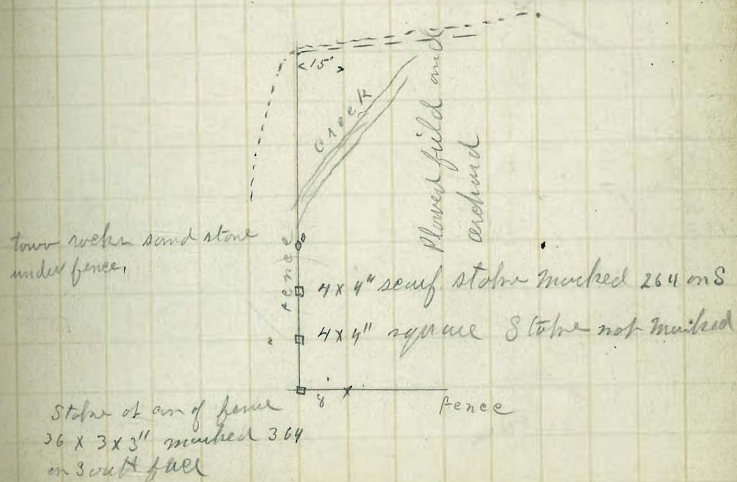
+ 2.0 trail  
37+03 fence

27+60

26+71	10'	left of line
26+36	8.0	left of line
26+10	9.0	left of line
25+50	8.0	left of line



Stake in end of rock 0.0  
11.5' west line



Sta 18ef - course M.C.

36+54.3 high water line Tidal Bay

36+15.8 center of O.T. &amp; PB RR

34+73.8 center of C.S. RR

27+54.3

21+88.1

18 54.3


1189.1

5+14



△

a stake 30 x 4 x 4"

marked 1178 on  7' x

East 1192 on

North end 255 on West

mound of rock  $0\frac{0}{10}$  50.  $070\frac{500}{020}$  mound of rock  
 102° 05' L. 77° 40' R.



X sees for Bents for Bridge on  
4<sup>th</sup> St. bet Palm & Redwood

Feb 8<sup>th</sup> 1892

Hambro  
Williams chain  
Shaw  
Van Hook

111

West Rod	Elev.	Center Rod	Elev.	East Rod	Elev.
-------------	-------	---------------	-------	-------------	-------

Sta	+	H <sub>2</sub>	-	Elev
-----	---	----------------	---	------

X see for Bent for Bridge  
on 4th St bet Palm & Redwood  
8 1/2

12

Sta	+	H <sub>2</sub> O	-	Elev	West	Center line	East
B.M.	1.58	278.78		277.20	B.M.	0th & Palm.	
#	3.05	272.90	8.93	269.85			
	o north line of Palm Street						
0+25						$\begin{array}{r} 40 \\ 257.8 \end{array}$	$\begin{array}{r} 0 \\ 257.8 \end{array} \quad \begin{array}{r} 18 \\ 259.5 \end{array} \quad \begin{array}{r} 33 \\ 264.0 \end{array} \quad \begin{array}{r} 36 \\ 269.0 \end{array} \quad \begin{array}{r} 40 \\ 269.4 \end{array} \quad \checkmark$
#	0.58	261.55	11.93	260.97			
0+41						$\begin{array}{r} 40 \\ 247.5 \end{array}$	$\begin{array}{r} 0 \\ 248.0 \end{array} \quad \begin{array}{r} 24.0 \\ 253.6 \end{array} \quad \begin{array}{r} 40 \\ 262.8 \end{array} \quad \checkmark$
#	0.08	250.00	11.63	249.92			
0+57						$\begin{array}{r} 40 \\ 237.9 \end{array}$	$\begin{array}{r} 0 \\ 241.8 \end{array} \quad \begin{array}{r} 40 \\ 261.0 \end{array} \quad \checkmark$
#	0.00	238.58	11.42	238.58			
0+73						$\begin{array}{r} 40 \\ 228.0 \end{array} \quad \begin{array}{r} 25 \\ 229.8 \end{array} \quad \begin{array}{r} 0 \\ 240.4 \end{array} \quad \begin{array}{r} 36 \\ 262.5 \end{array} \quad \begin{array}{r} 40 \\ 268.6 \end{array} \quad \checkmark$	
#	3.01	229.69	11.90	226.68			
0+89						$\begin{array}{r} 40 \\ 221.0 \end{array}$	$\begin{array}{r} 0 \\ 237.6 \end{array} \quad \begin{array}{r} 40 \\ 263.6 \end{array} \quad \checkmark$



X sec for - Bents for Bridge on  
4th St bet Palm & Redwood  
Sts

Sta	+	HO	-	Elev	West	Center	East
		229.69					✓
1+05					$\frac{40}{218.7}$	$\frac{0}{238.8}$	$\frac{40}{264.0}$
#	11.51	240.68	0.52	229.17			
1+21					$\frac{40}{221.7}$	$\frac{0}{239.3}$	$\frac{34}{262.0} \frac{35}{268.0} \frac{40}{269.1}$
#	112.74	253.06	0.36	240.32			
1+37					$\frac{40}{230}$	$\frac{0}{243.7}$	$\frac{40}{264.4}$
1+53					$\frac{40.0}{237.8}$	$\frac{0}{248.5}$	$\frac{30}{263.3} \frac{40}{268.5}$
1+69					$\frac{40}{245.0}$	$\frac{0}{256.7}$	$\frac{21}{264.1} \frac{23.0}{267.8} \frac{40.0}{270.4}$
#	11.56	264.00	1.42	252.64			
1+85					$\frac{40}{251.6}$	$\frac{0}{263.0}$	
2+01					$\frac{40}{257.4}$	$\frac{36}{260} \frac{30}{267.0}$	
#	7.17	269.57	1.60	262.40			
2+17					$\frac{40}{256.6}$	$\frac{29}{267.4}$	

Sta	+	H <sub>2</sub>	-	Elev	West	Center X	East
		269.57			$\frac{40}{256.8}$	$\frac{27}{267.0}$	
2+33				264.47			
B.m.			4.43	265.17	$\frac{40}{253.5}$	$\frac{27}{262.2}$	$\frac{8}{268.0}$
2+49				269.75			
B.m.			-0.76	270.33	$\frac{40}{248.1}$	$\frac{16}{257.8}$	$\frac{0}{264.4}$
2+65				264.47	$\frac{40}{247.1}$	$\frac{0}{262.0}$	
B.m.	4.40	268.90		264.47			
2+81				267.23	$\frac{40}{241.2}$	$\frac{0}{254.0}$	$\frac{40}{264.4}$
#	0.55	257.78	11.67	267.23			
2+97				246.91	$\frac{40}{238.1}$	$\frac{0}{246.2}$	$\frac{40}{260.3}$
#	0.50	246.41	11.87	246.91			$\frac{40}{269.9}$
3+13				234.71	$\frac{40}{229.0}$	$\frac{0}{242.5}$	$\frac{40}{269.9}$
#	6.80	241.51	11.70	234.71			
+29				241.16	$\frac{40}{232.7}$	$\frac{0}{244.6}$	$\frac{40}{262.6}$
#	11.67	252.83	0.35	241.16			
+45				252.14	$\frac{40}{237.9}$	$\frac{0}{251.7}$	$\frac{40}{263.8}$
+61				252.14	$\frac{40}{245.2}$	$\frac{0}{261.0}$	$\frac{40}{269.6}$
#	11.40	263.54	0.69	252.14			
+77							



Sta	+	HD	-	Elev	West	Center *	East
		263.54					
3+93					$\frac{40}{257.8}$	$\frac{10}{264.4}$	
#	8.45	270.01	1.98	261.56			
4+09					$\frac{40}{257.3}$	$\frac{20}{266.5}$	
4+25					$\frac{40}{258.9}$	$\frac{10}{265.5}$	
+41					$\frac{40}{251.4}$	$\frac{10}{262.7}$	
+57					$\frac{40}{247.4}$	$\frac{10}{263.0}$	
#	11.3	259.25	11.99	258.12			
+73					$\frac{40}{246.2}$	$\frac{10}{263.8}$	
+89					$\frac{40}{245.6}$	$\frac{12}{259}$	
67 05					$\frac{40}{248.3}$	$\frac{10}{261.1}$	
+21					$\frac{40}{251.5}$	$\frac{10}{266.0}$	
+37					$\frac{40}{250.7}$	$\frac{20}{265.6}$	$\frac{10}{266.3}$

Sta	+	H <sub>2</sub> O	-	Elev	West	center	East
		259.25					
5+53					$\frac{40}{247.8}$	$\frac{10}{264.8}$	
+69					$\frac{40}{249.3}$	$\frac{10}{258.2}$	
+85					$\frac{40}{258}$	$\frac{10}{268.2}$	
#	10.70	269.93	0.02	259.23			
6+01					$\frac{40}{268.4}$	$\frac{10}{265.7}$	
+17					$\frac{40}{264.8}$	$\frac{10}{267.4}$	
+33					$\frac{40}{262.0}$	$\frac{31}{266.2}$	$\frac{10}{267.9}$
+49					$\frac{40}{261.9}$	$\frac{38}{265.4}$	$\frac{10}{268.4}$
+65					$\frac{40}{258.8}$	$\frac{26}{266.5}$	$\frac{10}{268.5}$
+81					$\frac{40}{257.9}$	$\frac{26}{265.0}$	$\frac{10}{269.2}$
+97					$\frac{40}{260.6}$	$\frac{30}{265.9}$	$\frac{10}{269.2}$



Sta	+	H <sub>2</sub> O	-	Blu	West	center	East
		269.93					
7+13	q				$\frac{40}{258.12}$	$\frac{30}{265.12}$	$\frac{10}{269.1}$
+29					$\frac{40}{257.7}$	$\frac{26}{252.}$	$\frac{10}{269.7}$
7+46					$\frac{40}{262.6}$	$\frac{30}{267.9}$	$\frac{10}{270.0}$
+0					$\frac{40}{}$		
+60							
10 m			.17	269.76			

North of

Redwood

Sta	West	Centre	East	
0	266.50		267.50	
+25	266.62		267.62	✓
+41	266.70		267.70	✓
+57	266.78		267.78	✓
+73	266.86		267.86	✓
+89	266.94		267.94	✓
1+05	267.02		268.02	✓
+21	267.10		268.10	✓
+37	267.18		268.18	✓
+53	267.26		268.26	✓
+69	267.34		268.34	✓
+85	267.42		268.42	✓
2+01	267.50		268.50	✓
+17	267.58		268.58	✓
+33	267.66		268.66	✓
+49	267.74		268.74	✓
+65	267.82		268.82	✓
+81	267.90		268.90	✓
2+97	267.98		268.98	✓
3	268.00		269.00	
+13	268.00		269.00	✓

North line of Palm

South line of Lurie St.



3429	268.00	269.00	✓
+45	268.00	269.00	✓
+61	268.00	269.00	✓
+77	268.00	269.00	✓
+80	268.00	269.00	✓
+93	268.06	269.06	✓
4109	268.14	269.14	✓
+25	268.22	269.22	✓
+41	268.30	269.30	✓
+57	268.38	269.38	✓
+73	268.46	269.46	✓
+89	268.54	269.54	✓
5105	268.62	269.62	✓
+21	268.70	269.70	✓
+37	268.78	269.78	✓
+53	268.86	269.86	✓
+69	268.94	269.94	✓
+85	269.02	270.02	✓
6101	269.10	270.10	✓
+17	269.18	270.18	✓
+33	269.26	270.26	✓

North line of Lumber

+49	269.34	270.34	✓
+65	269.42	270.42	✓
+80	269.50	270.50	
+81	269.50	270.50	
+97	269.50	270.50	
7-13	269.50	270.50	
+29	269.50	270.50	
+45	269.50	270.50	
+60	269.50	270.50	

South line Redwood

North line Redwood



Tract of land in N.W. cor  
of City Park granted to Miss

Lesson NW 1/4 1131

21

Set a stake 200' east of the  
N.W. cor of the City Park, thence south  
parallel to the west line of City  
Park 1550' over level mesa  
thence east and parallel with the  
north line of the City Park 200' to  
bank of canon (set ply) 350' to steeper  
slope (set ply) 850' to bottom of canon  
900' set 1" x 1" stake in mid of rock  
thence north 1200' set flat stake  
1550' set 1" x 1" stake in mid of rock  
thence west along the north line of  
the City Park 80' to bottom of  
Creek 150' to foot of slope  
200' to stake point of beginning  
and W 1/2 St.  
set a stake marked water pipe 85'  
south of N.W. cor;

Sta	+	HO	-	Elev
B.M.	5.04	92.05		87.01
197			4.73	87.32
197+78			2.64	90.41
198			3.67	88.38
198+49			4.09	87.94
199			4.85	87.20
200			4.84	87.21
201			10.47	81.54
I	1.43	82.19	11.29	80.76
202			4.57	77.32
203			8.70	74.49
203+60			10.0	72.19
#	1.70	72.06	11.83	70.36
204			2.49	69.57
204+90			9.54	63.52
204+95			12.1	59.96
205			10.6	61.46
205+3			8.90	63.16
205+54			2.65	69.41
206			1.57	70.49
#	9.18	80.47	0.87	71.19

30th & R St Pkg NE cor

Lotus Ditch



Sta	+	H <sub>2</sub>	-	Elev
		80.47		
207			6.24	74.23
208			5.73	74.74
209			5.68	74.79
210			4.84	75.53
211			6.35	75.02
# 212	1.61	75.19	7.09	73.38
213			3.68	71.61
214			5.19	70.00
215			5.97	69.22
# 216	2.61	70.59	7.21	67.78
217			5.34	65.25
217.54			6.1	64.49
B.M.			6.67	63.92
B.M.			4.44	65.93

South west cor spike in fence post  
Keyd. Hinge

+20

7

6

5

4

+46.90° 0' W

3

+66.4 50° 15' R

2

1

0

Sta 0 is a point on the east line of S 26th  
 7' S of the center line of Franklin ave  
 Run East along Franklin ave to 28th  
 28th to Sargent, Sargent to lot 38 RA 318

End of line

Intersection of pipe line on 28th with  
 pipe line on Sargent

Intersection of pipe line on Franklin with  
 pipe line on 28th



Sta	+	HO	-	Elv.
190	6.1	77.12		71.02
150			7.55	69.57
191			4.23	72.99

Survey of tract in City Park for  
Blaisdel & Morrison

Dist	Ref	Course	M.C.
482.0	+ 23.0	dist west to Bd = 505' on line bet Morrison & Blaisdel	
440.5		at H	
0		East thence east on a line bet Morrison & Blaisdel	
600		set a plug, thence west 23' to east line of Bd, and East at about 482	
472			
0		South	
Returned to point of beginning and ran South			

482.0

□ stake marked in on SW

330

△ line

0 East

Beginning at a point on the east line of the  
Park Boulevard 486' east of the N.E. cor. of  
fractional blk in Hartons add

□ stake marked N on SE



Description of a tract of land  
granted to Morrison

the City Park  
Feb 20 1892

27

Beginning at a point 486' East of  
260 in Hortons Add thence  
thence West 505' to the easterly  
thence <sup>northwesterly</sup> along the easterly line  
point of beginning, containing

the N.E. cor of fractional blk  
East 482; thence south 600  
line of the park boulevard  
of said boulevard to the  
6.50  
100 acres

~~Description of tract of land in the city Park granted  
to Blaisdell~~

~~Beginning at a point 482'  
N.E. cor of blk 260 in Hortons  
south 100/14 West 701 feet thence  
line of the Park Boulevard then  
Boulevard to point of beginning~~

~~East and 600' south of the  
add, thence east 505' thence  
west 399 feet to the easterly  
or northwesterly along said  
containing 7 acres~~

Tract granted jointly to  
beginning at a point on the easterly  
where the south line of Tris  
ly intersects the westerly  
east 330' thence north 117°  
granted to Blaisdell thence  
the Park Bd thence S easterly

~~Blaisdell & Morrison.  
line of the park boulevard  
at in 14. B. produced easter  
line of said boulevard thence  
West 245' to the S.E. cor of tract  
West 396' to the East line of  
along the easterly line of said~~



Boulevard to the point of beginning containing 2.1 acres

Tract of land granted to Blairdell

Beginning at a point on the Boulevard where the south line meets the east line of said 505' thence  $310^{\circ}15'$  W 701' then along the easterly line of the of beginning containing

easterly line of the part of Missouri tract into Boulevard thence east West 396' thence northerly park Boulevard to the point 7.0 acres



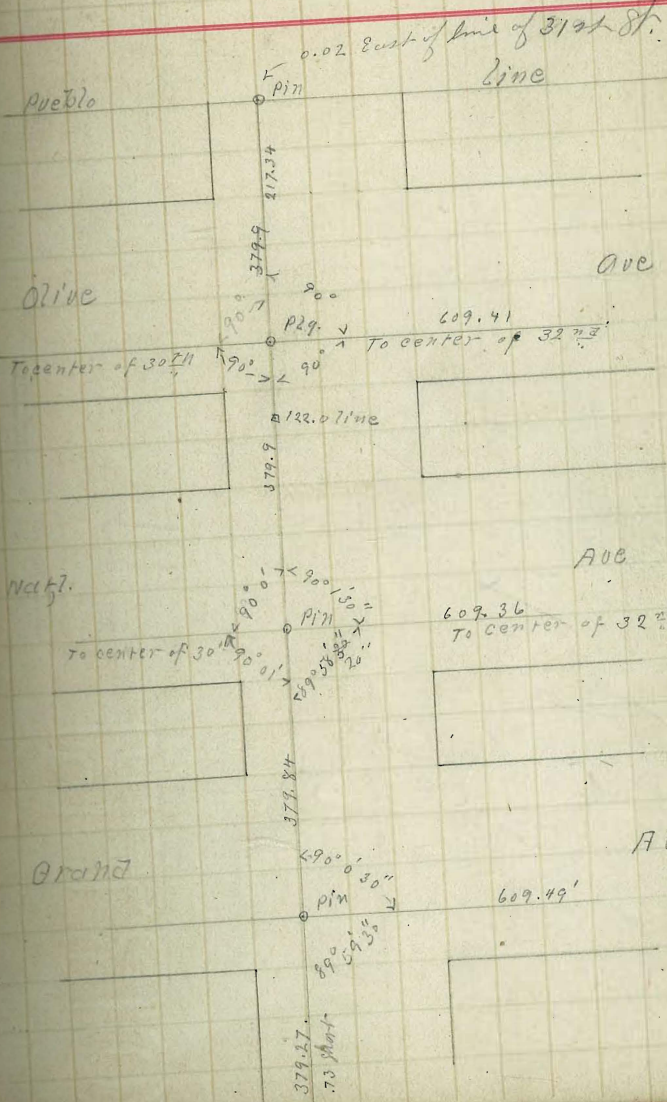
St Centers on 31st St.

Mar 11 1892

Handbook  
William  
Shurt  
Daw Iturbide

29

set up on center of Olive & 31st St sight to  
30th St 90° to line of 31st St.  
Sight to center of Olive & 32nd St B  
to line of 31st St



Boston

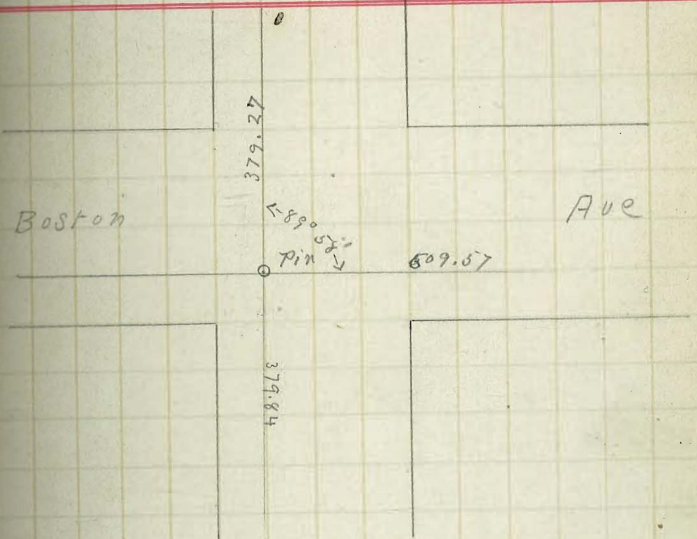
Ave

379.27

← 899.57  
pin

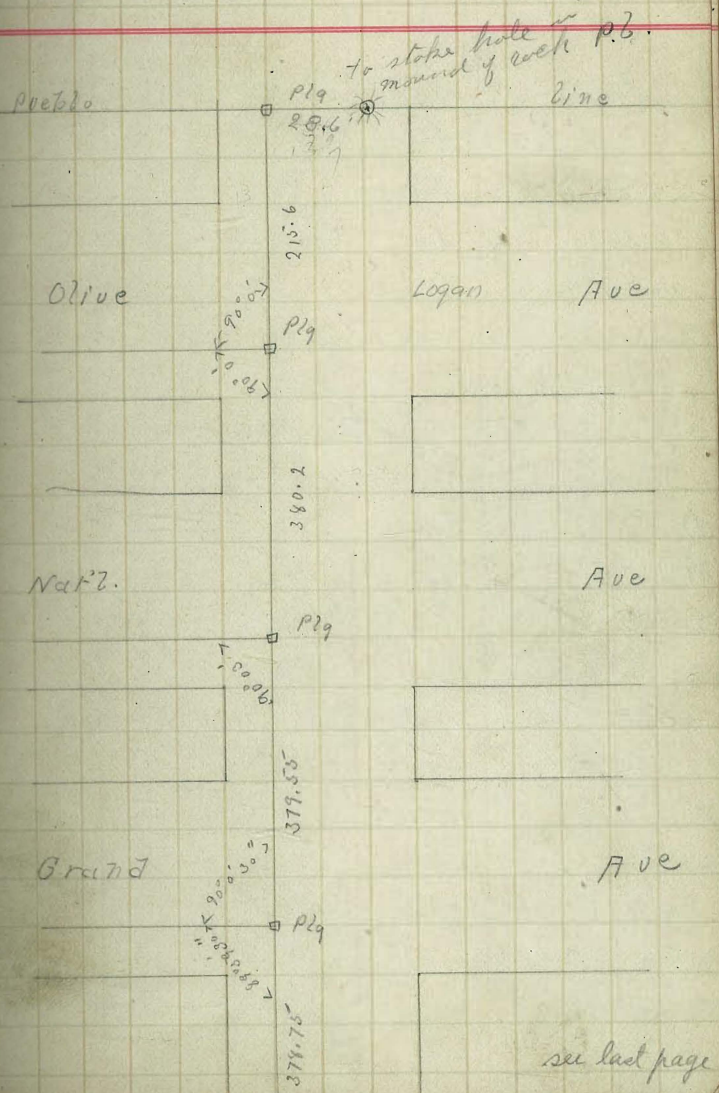
809.57

379.27





Center on 32nd St bet Olive  
and Boston.





Set up on center of 31st & North  
 Sight to 28th & north

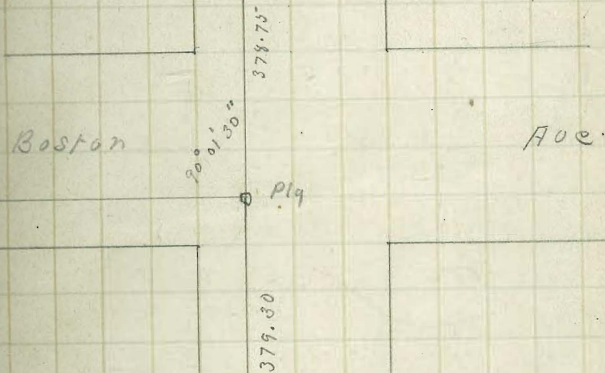
29th St	lines	
30th St	0.07	North
31st St	lines	
32nd St	0.25	South

Set up on center of 31st and Olive  
 B.S. to 32nd & Olive produced line  
 west

32nd	lines	
31st	lines	
30th	0.10	North
29th	0.10	North

Set up on 27th B.S. 27 Grand

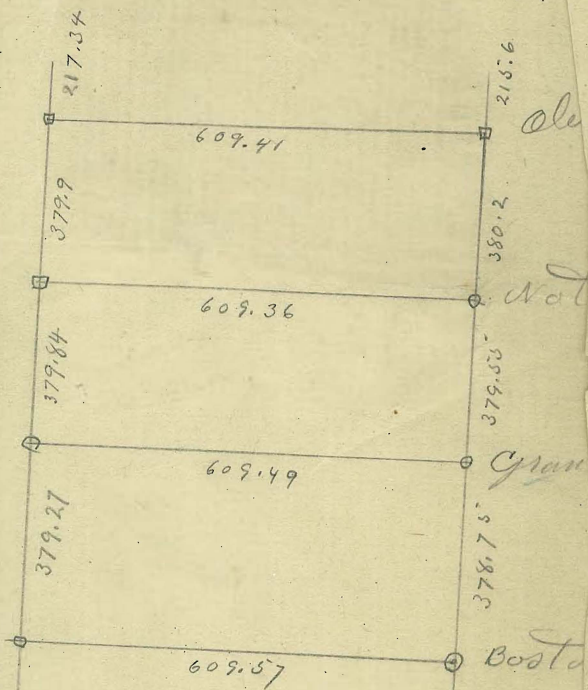
27th	line	
28th	out	
29th	line	
30th	0.15	South
31st	0.52	South
32nd	0.94	South



379.84

379.25  
 378.70  
 .55





Set up a center of 31<sup>st</sup> & Boston  
 B.S. to 32<sup>nd</sup> St

32<sup>nd</sup> St line  
 31<sup>st</sup> St line  
 30<sup>th</sup> St line  
 29<sup>th</sup> St 0.06 north  
 28<sup>th</sup> St —  
 27<sup>th</sup> St 0.48 south.

Set up on center of Popple's 29<sup>th</sup>

B.S. to 28<sup>th</sup>  
 28<sup>th</sup> St line  
 29<sup>th</sup> St line —  
 30<sup>th</sup> " 0.07 south.  
 31<sup>st</sup> " 0.42 south.  
 32<sup>nd</sup> "



X sec of H Sh att to H Sh

1892

34

N	Swalk	Gutter	Center	Swalk	Gutter	S	Sta	+	H <sub>0</sub>	-	Dist
			(5.12)								
1-8 3.3			2.4 2.7 3.2 1.9			3.2 1.9	B.M. 2	3.87	5.12	1.25	H Sh & H Sh W of 9th
											Level of Carlsons wharf.
2.5 2.6 0.5 4.6 4.0			2.4 2.7			3.4 1.7 3.5 1.6 1.7					Top of St. Geo. Rail on S.F. wharf. " CS Rail " " "
5.1 -1.2 6.3 -0.8 5.9 -1.4 6.5 -1.3 6.4	-0.5 5.6 -0.6 5.7 -0.9 6.0 -1.0 6.1 -1.0 6.1	-0.5 5.6 -0.6 5.7 -0.9 6.0 -1.0 6.1 -1.0 6.1	1.0 4.1 0.5 4.6 0.1 5.0 0.0 5.1 -0.3 5.4 (4.6)	-0.5 5.6 -1.3 6.4 -1.5 6.6 -1.5 6.6 -1.8 6.9	-0.5 5.6 -1.0 6.1 -1.1 6.2 -0.9 6.0 -1.1 6.2	3.4 -0.9 6.6 -0.8 5.9 -0.8 5.9 -0.7 5.8 -1.2 6.3	2750 0 +50 1 +50 2				center of Atlantic
-1.5 6.1 -2.0 6.6 -1.5 6.1 -1.7 6.3	-1.1 5.7 -1.5 6.3 -1.7 6.3 -1.4 6.0	-1.1 5.7 -1.5 6.3 -1.7 6.3 -1.7 6.3	-0.4 5.0 -0.4 5.0 -0.4 5.0 -0.4 5.0	-1.8 6.4 -1.8 6.4 -1.7 6.4 -1.7 6.3	-1.4 6.0 -1.4 6.0 -1.4 6.0 -1.4 6.0	-1.1 5.7 -1.1 5.7 -1.3 5.9 -0.9 5.5	# +12 +37.5 +62 0	5.58	4.61	6.09	-0.97
-0.7 5.9 -0.8 5.5 -0.2 5.4	-1.0 6.2 -0.7 5.9 -0.8 5.5	-1.3 6.5 -1.1 6.3 -0.9 6.1	(5.19) +0.1 5.1 +0.3 4.9 +0.2 5.0	-1.4 6.4 -1.2 6.4 -1.0 6.2	-1.0 6.2 -0.7 5.9 -0.9 6.2	-1.2 6.4 -1.0 6.2 -0.9 5.9	B.M. # +50 1 175	6.14	5.19		-0.95 -0.92 Cals H



N	cut	Gutter	Centre	Gutter	cut	S	Sta	+	H <sub>0</sub>	-	Elev
			520								
-0.21	-0.11	-0.11	5.19	-0.01	-0.80	-0.5					
540	53	5.3	5.2	6.0	5.7	-0.7	2				
-0.1	-0.11	-0.11	+0.19	-0.90	-0.70	-0.71					
5.2	5.3	5.3	5.0	6.1	5.8	5.9	2+12				
+0.49			+0.49			+0.71	2+37.5				Arctic and H
4.7			4.7			5.9					
+0.39	-0.01	-0.01	-0.49	-1.00	-0.71	+0.71					
4.8	5.2	5.2	4.7	6.2	5.9	5.9	2+62				
+0.49	-0.00	-0.21	+0.59	-1.19	-0.69	-0.71					
4.7	5.2	5.2	4.6	6.0	5.5	5.9	0				
+0.59	+0.39	-0.01	+0.79	-0.60	-0.30	-0.49					
4.6	4.8	5.2	4.3	5.8	5.5	5.7	0+50				
+0.59	+0.79	+0.49	+1.10	-0.80	+0.10	+0.10					
4.6	4.4	4.7	4.1	5.6	5.1	5.1	1				
+1.00	+0.90	+0.70	+1.40	-0.01	+0.20	+0.60					
4.2	4.3	4.5	3.8	5.2	4.9	4.6	1+50				
+1.70	+1.00	+0.40	+1.60	+0.50	+0.50	+1.10					West Line of India
3.5	4.2	4.8	3.6	4.4	4.4	4.1	2				
+1.50	1.50	0.90	1.15	0.60	0.60	0.50					
6.5	6.5	7.3	6.5	7.0	7.5	7.5	2+22	7.33	8.15	4.97	0.82
			1.80			0.90					
5.9	2.3		6.4			7.3	2+32.5			7.43	0.72
			2.20			0.750					0.73
6.6	6.9	6.0	6.0	7.3	7.1	6.7	2+42				
1.80	1.40	1.60	2.30	1.20	1.20	1.60					
6.4	6.8	6.6	5.9	7.2	7.0	6.6	0				
2.60	2.10	2.00	2.60	2.20	2.20	1.90					
5.6	6.1	6.2	5.4	6.0	6.2	6.3	0+50				
3.60	2.70	2.50	3.40	1.80	2.00	1.70					
4.6	5.5	5.7	4.8	6.4	6.2	6.3	1				
4.10	3.70	2.90	4.10	2.50	2.70	3.00					
4.1	4.5	5.3	4.1	5.7	5.5	5.2	1+50				
4.70	3.70	3.70	4.50	3.30	3.50	3.50					
3.5	3.6	4.5	3.7	4.9	4.7	4.7	2				
4.70	4.50	3.70	3.60	3.60	3.60	3.50					
3.5	3.7	4.5	3.6	4.6	4.6	4.4	2+12				
5.20	4.50	5.20	3.40			4.20					
3.0	3.7	3.6	3.3			4.0	2+37.5				
						4.50					
3.4	3.8	3.6	3.0	4.2	3.9	3.9	2+67				
3.1	3.1	3.5	2.9	4.1	3.9	3.7	0				East Line Columbia



N	East	Center	Center	Center	West	S	Sta	+	HD	-	Blw
4.20	5.80	5.80	(1390)	5.90	4.40	4.70					
7.1	7.5	8.0	7.4	8.7	8.6	4.90					
6.40	6.10	5.90	6.60	5.30	5.30	8.6	0+50	BM		2.47	5.600
6.9	7.2	7.4	6.7	8.0	8.0	5.60					
4.90	6.90	6.30	7.40	6.40	6.40	7.7	1	478	13.27	3.66	4.49
6.4	6.5	7.0	5.7	6.9	6.9	6.80					
7.80	7.70	6.90	7.90	6.90	6.90	6.5	1+50				
5.4	5.6	6.4	5.4	6.4	6.4	6.80	2				
7.50	7.30	7.00	6.10	7.10	7.10	7.00					
5.4	6.0	6.3	5.2	6.2	6.2	6.3	2+12				
8.70			5.1	8.20		7.70					
4.6						6.8	2+32.5				
8.80	8.10	8.10	8.40	7.40	7.40	7.70					
5.0	5.2	5.2	4.9	5.9	5.9	5.60	2+62				
6.40	8.20	8.00	8.50	7.50	7.50	7.70					
4.8	5.1	5.3	4.8	5.8	5.8	5.6	0				
9.30	8.90	8.50	9.20	7.90	8.00	7.90					
4.0	4.4	4.8	4.1	5.4	5.3	5.4	0+50				
9.10	9.30	9.00	9.70	8.30	8.30	8.50					
4.2	4.0	4.3	3.6	5.0	5.0	5.0	1				
10.20	9.80	9.60	10.10	8.70	9.00	8.30					
3.1	3.5	3.7	3.2	4.6	4.3	4.0	1+57				
10.70	10.30	9.80	10.50	9.40	9.40	9.40					
2.6	3.0	3.5	2.8	3.9	3.9	3.9	2				
10.40	10.00	10.00	10.50	9.40	9.40	9.40					
2.9	3.3	3.3	2.8	3.9	3.9	3.9	2+12				
11.20			10.70			8.90					
2.1			2.6			3.4	2+37.5				
10.90	10.70	10.70	10.90	9.60	10.10	10.10					
2.4	2.6	2.6	2.4	3.7	3.2	3.3	2+62				
11.10	10.90	10.70	10.90	9.70	10.10	10.30					
2.2	2.4	2.6	2.4	3.6	3.2	3.8	0				
		(1640)						East Line Union			
								6.37	16.44	3.10	10.17
11.50	11.00	10.40	11.10	9.60	9.90	9.90					
4.9	5.4	6.0	5.3	6.8	6.6	6.5	0+50			5.36	11.09
11.80	11.00	10.60	11.20	9.70	9.90	10.20					
4.9	5.4	5.8	5.2	6.7	6.5	6.2	1				
12.00	11.60	11.00	11.60	9.80	10.10	10.20					
4.4	4.8	5.4	4.8	6.6	6.3	6.2	1+50				
12.00	11.80	11.40	11.90	10.60	10.70	10.70					
4.4	4.6	5.0	4.5	5.8	5.6	5.7	2				
								West Line Trout			



N	curb	Gutter	center	Gutter	curb	S	Sta	+	HO	-	Plw	
11.70	11.30	11.40	12.00	10.20	10.40	10.90						
4.7	5.1	5.0	4.4	6.0	5.5	5.5	2+14					
12.30			11.90			11.00						
4.1			4.5			5.0	2+44					
11.80	11.90	11.40	12.00	10.00	11.00	11.00						
4.4	4.5	5.0	4.4	5.8	5.4	5.4	2+74					
12.10	11.90	11.40	12.10	10.80	11.10	11.00						
4.3	4.5	4.8	4.3	5.6	5.3	5.9	0	BM	4.16	12.28	12.27	
12.10	12.10	11.30	12.10	10.70	11.00	11.20						
4.3	4.3	5.1	4.3	5.7	5.4	5.2	0+50					
12.10	11.90	11.40	12.20	10.80	11.10	11.30						
4.3	4.5	5.0	4.2	5.6	5.3	5.1	1					
12.20	12.10	11.60	12.10	10.90								
4.2	4.3	4.8	4.3	5.5	5.6	11.00	1+50					
22.30	12.20	11.40	12.20	11.00	11.00	11.60						
4.1	4.2	5.0	4.2	5.4	5.4	5.0	2	West line		1 st		
11.90	11.90	11.90	12.20	11.10	11.10	11.90						
4.5	4.5	4.5	4.2	5.3	5.3	5.5	2+14					
		1530										
12.30			12.10			10.90			4.15	16.30	5.29	11.15
3.0			3.2			4.4	2+40					
11.00	11.15	10.80	11.60	10.60	10.60	11.00						
4.3	3.8	4.5	3.7	4.7	4.7	4.3	2+60					
11.60	11.60	10.40	11.40	10.60	10.60	10.90						
3.7	3.7	4.8	3.9	4.7	4.7	4.5	0					
10.60	10.80	9.80	11.20	10.10	10.10	10.00						
4.4	4.5	5.5	4.1	5.2	5.2	5.3	0+5					
10.40	10.50	9.80	10.70	9.60	9.60	9.20						
4.9	4.8	5.5	4.6	5.7	5.7	6.1	1					
10.90	10.50	9.70	10.80	9.40	9.40	10.30						
4.4	4.8	5.6	4.8	5.9	5.7	6.0	1+5					
10.20	10.20	9.20	10.40	9.20	9.20	10.10						
5.1	5.1	6.1	4.9	6.1	6.1	5.2	2					
9.90	9.90	9.30	10.20	6.60	6.5	6.7	2+14					
5.5	5.5	6.0	5.1	6.7	6.3	6.7	2+14					
10.10			10.20			8.60						
5.2			5.1			5.3	2+40					
9.60	9.80	9.50	10.20	8.70	9.20	9.30						
5.5	5.5	5.8	5.1	6.9	6.1	6.0	2+66					
10.40	10.30	9.60	10.30	9.10	9.10	9.40						
4.19	5.0	5.7	5.0	6.2	6.0	5.9	0	East line		2 st		



N	cut	Butte	Center	Butte	cut	S	Sta	+	HD	-	Elv	
			15.95				BM	4+40	15.98	3.75	115.5	11.56
		16.00										
10.70	10.50	10.00	10.70	9.30	9.60	9.70						
5.3	5.2	6.0	5.3	6.7	6.4	6.3	0+50					
11.10	10.70	10.30	10.90	9.50	9.60	10.00						
4.9	5.3	5.7	5.1	6.5	6.2	6.0	1					
11.50	11.20	10.90	11.20	10.00	10.20	9.90	1+5					
4.5	4.8	5.1	4.8	6.0	5.8	6.1						
11.90	11.50	11.30	11.70	10.50	10.50	10.20	2					
4.1	4.5	4.7	4.3	5.5	5.5	5.8						
11.40	11.50	11.50	11.70	10.50	10.50	10.10	2+14					
4.6	4.5	4.5	4.3	5.5	5.5	5.9						
13.0			11.90			11.30	2+40					
3.0			4.1			4.7						
12.40	12.50	11.90	12.50	11.40	11.30	11.40	2+64					
3.4	3.5	4.1	3.6	4.6	4.7	4.6						
12.60	12.50	11.80	12.50	11.60	11.50	11.60	0	5.96	15.94	2.37	135.8	135.7.5
3.4	3.5	4.2	3.2	4.4	4.5	4.4						
13.6	13.5	12.4	13.40	11.50	12.20	12.40	0+50					
5.3	5.4	6.5	5.5	6.7	6.7	6.5						
17.4	14.1	13.4	14.1	12.8	13.0	12.8	1					
4.5	4.8	5.5	4.9	6.1	5.9	6.1						
15.4	15.0	14.5	14.7	13.3	13.6	13.7	1+5					
3.5	3.9	4.4	4.2	5.9	5.1	5.2						
16.8	16.4	16.0	15.6	15.2	15.4	15.3	2					
2.1	2.5	2.9	3.3	3.7	3.5	3.9				1.31	17.63	17.63



N. St. 6th to 16th

N	curb	by gutter	center	by gutter	curb	S	Sta	+	H <sub>2</sub> O	-	Elus
	26.06		<u>30.96</u>		24.96						
	4.9		25.16		6.0		0	4.91	30.96		26.05
	26.26		5.8		24.76						
	4.7		25.66		6.2		0+50				
	26.26		5.3		24.96						
	4.7		26.26		6.0		1				
	26.66		4.7		25.16						
	4.3		26.46		5.8		1+50				
	26.86		4.5		25.36						
	4.1		26.86		5.66		2				
	27.76		4.1		26.86						
	3.2		26.96		4.4		2+40	4.06	31.69	3.33	27.63 27.615
	27.79		4.0		26.49						
	3.9		<u>31.69</u>		26.79		0	4.66			
	27.89		4.3		4.9						
	3.8		27.79		26.79		0+50				
	28.39		3.9		4.9						
	3.3		28.09		26.79		1				
	28.69		3.6		27.39						
	3.0		28.39		4.3		1+50				
	28.99		3.1		27.79						
	2.7		29.09		3.9		2				
	27.79		2.6		28.19						
	1.9		29.49		3.5		2+40	4.64	35.67	0.66	31.03 31.03
	29.97		2.2		28.77						
	3.7		<u>33.67</u>		6.9		0				
	30.57		5.7		29.67						
	5.1		30.67		6.0		0+50				
	31.57		5.0		30.67						
	4.1		31.47		5.0		1				
	32.37		4.2		34.47						
	3.3		32.37		3.2		1+50				
	32.97		3.3		32.27						
	2.7		33.17		2.97		2				
	34.27		2.5		32.87						
	1.4		33.57		2.8		2+40	9th St			
	34.17		2.1		34.17						
	1.5		34.27		1.5		0				
	34.97		1.4		35.52		0+50				
	0.7		35.17		8.4						
	26.02		0.5								
	7.9		<u>43.92</u>				1	8.74	43.92	0.49	35.18
			7.8								

← 491 3096  
East of 6th

7th St

8th St

9th St



N	cmb	Elev	Center	Elev	cmb	Elev	Sta	+	H <sub>2</sub> O	-	Elev
			(4392)								
6.9	37.02	6.5	37.42	7.6	36.32	H30					
5.9	38.02	5.4	38.62	6.3	37.62	2					
5.5	38.42	4.8	39.12	5.4	38.52	2+40	10 <sup>th</sup>				
4.9	39.02	4.2	39.72	5.4	38.52	0					
3.8	40.12	3.2	40.72	4.3	39.62	0+50			3.30	40.62	40.59 B.M.
2.5	41.42	2.1	41.82	3.4	40.52	1					
1.1	42.82	1.0	42.92	2.2	41.72	1+50					
7.8	43.91	7.6	44.11	8.9	42.81	#2	8.66	57.71	0.87	43.05	
7.0	44.71	6.9	44.81	8.1	43.61	2+40	11 <sup>th</sup>				
6.5	45.21	6.1	45.61	7.5	44.21	0					
5.6	46.11	5.3	46.41	6.8	44.91	0+50					
4.8	46.91	4.6	47.11	5.9	45.81	1					
4.2	46.51	3.8	47.91	4.9	46.81	1+50			4.0	47.71	47.71 B.M.
3.4	48.31	3.2	48.57	4.4	47.31	2					
2.5	49.21	3.0	48.71	3.7	48.01	2+40	12 <sup>th</sup>				
3.1	48.61	2.8	48.91	4.1	47.61	0					
2.9	48.81	2.5	48.21	4.0	47.71	0+50					
2.6	49.11	2.3	49.41	3.7	48.01	1					
4.7	47.01	4.6	47.11	6.1	45.61	1+50	4.77	54.23	2.25	49.46	
4.2	47.51	4.5	47.21	5.9	45.81	2					
4.1	47.61	4.5	47.21	5.3	46.41	2+40	13 <sup>th</sup>		4.20	50.03	50.04 B.M.



N	Cont.	Cont.	Cont.	Cont.	S	Sta	+	#	-	Elev.
		52.24								
2.3	49.94	2.7	49.54	3.8	49.44	0	2.21	52.24		50.03
3.0	49.24	3.1	49.14	4.1	48.14	0+50				
3.8	49.44	3.6	49.64	4.5	47.74	1				
4.5	47.74	4.3	47.94	4.9	47.34	1+50				
5.3	46.94	4.9	47.34	5.3	46.94	2				
5.7	46.54	5.7	46.54	5.9	46.34	2+40				
7.4	44.84	6.6	45.62	7.3	44.92	0			5.09	47.15 B.M.
9.2	43.04	8.4	43.84	9.2	43.04	0+50				
11.1	41.14	10.7	41.54	11.1	41.14	1	1.88	43.53	10.39	41.65
4.1	39.43	4.2	39.33	4.3	39.23	1+50				
6.4	37.13	6.2	37.33	6.7	36.83	2				
8.2	35.32	8.0	35.52	8.3	37.23	2+50				
10.1	33.43	9.6	33.93	8.4	33.13	3				
4.0	31.64	3.5	32.14	4.5	31.14	3+50	2.28	35.64	10.17	33.36
5.7	29.94	4.6	31.04	6.2	29.44	4			4.0	31.64 31.6588M
5.3	30.34	4.9	30.74	6.0	29.64	4+40				
5.2	30.44	4.7	30.94	6.2	29.44	0				
4.7	30.94	4.1	31.54	5.2	30.44	0+50				
3.8	31.84	3.2	32.44	3.9	31.74	1				
2.8	32.84	2.4	33.24	2.9	32.74	1+50				
1.8	33.84	1.3	34.34	1.6	34.04	2	6.09	39.85	1.88	33.76 37.56 B.M.

14th St

Bridge

15th St



No.	Curb	Centre	Curb	S	Sta	16th St
4.7	35.15	4.5 <u>3980</u>	35.35	4.7	35.15	2+40
4.3	35.55	3.8	36.05	4.4	35.45	0

East line of 16th St



X Sec of F Sh 200' W of 25th

43

North	Curb	Gutter	Center	Gutter	Curb	North	Sta	+	+	HD	-	Elev
B.M.	24th + J									8.48	166.83	158.35
			(186.0)				#	11.28	178.03	0.08		166.70
							#	9.67	186.00	1.70		176.33
177.3	177.1	176.5	176.9	175.2	175.8	175.5						
5.7	9.9	9.5	9.1	10.8	10.2	10.5	4					
178.6	178.5	177.5	178.0	176.4	177.0	176.9						
7.4	7.5	5.5	5.0	9.6	9.0	9.1	+50					
180.0	179.8	178.7	179.0	177.7	178.2	178.3						
6.0	6.2	7.3	7.0	5.3	7.4	7.6	5					
181.1	180.7	180.0	180.5	179.0	179.6	179.7						
4.9	5.3	6.0	5.5	7.0	6.4	6.3	+50					
182.5	182.2	181.7	182.1	180.7	181.3	181.3						
3.5	3.8	4.3	3.9	5.3	4.7	4.7	6					
											0.24	185.76



X. sec's of Burrow put on 821st St  
bet Logan & Milton

Sta	+	1+0	-	Elev
-----	---	-----	---	------

Bm	2.12	33.91		31.79
----	------	-------	--	-------

South - end of Logan

clear area 2' low

0+25

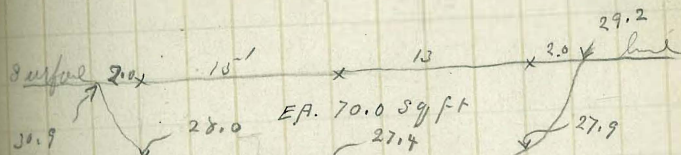
55.5  
86.1  
62.9  
16.2  
9.0

0+75

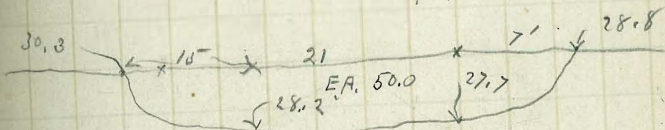
229.7 cubic yds

1+25

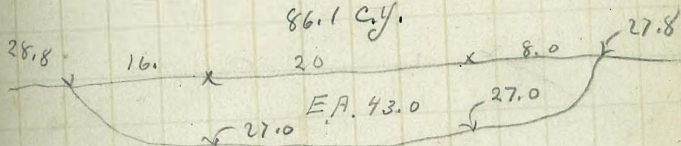
1+50



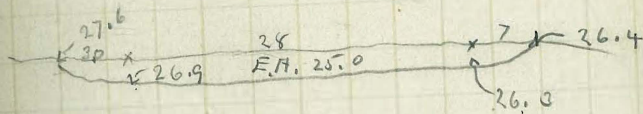
55.5 cubic yds



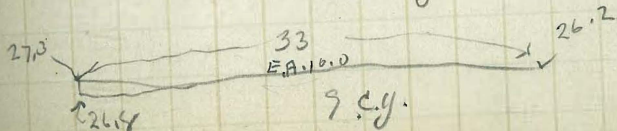
86.1 cy.



62.9 cy.



16.2 cy



9 cy.



x sec of borrow pit on the  
 north side of bog on bet Logan & Rea

H.S.

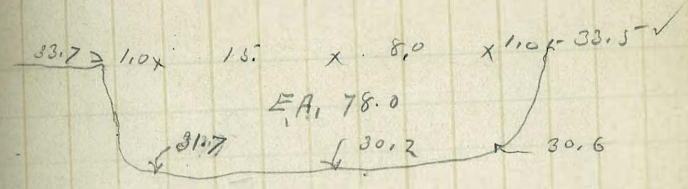
0 33.9

+25

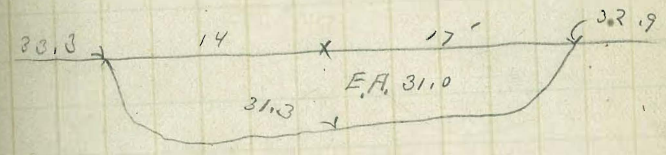
+50

+75

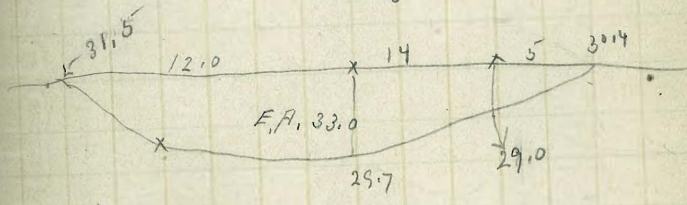
1  
 50.4  
 29.6  
 16.0  
 96.0  
 230.0  
 326.0 total borrowed



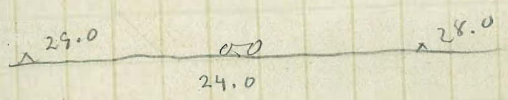
50.4 cy.

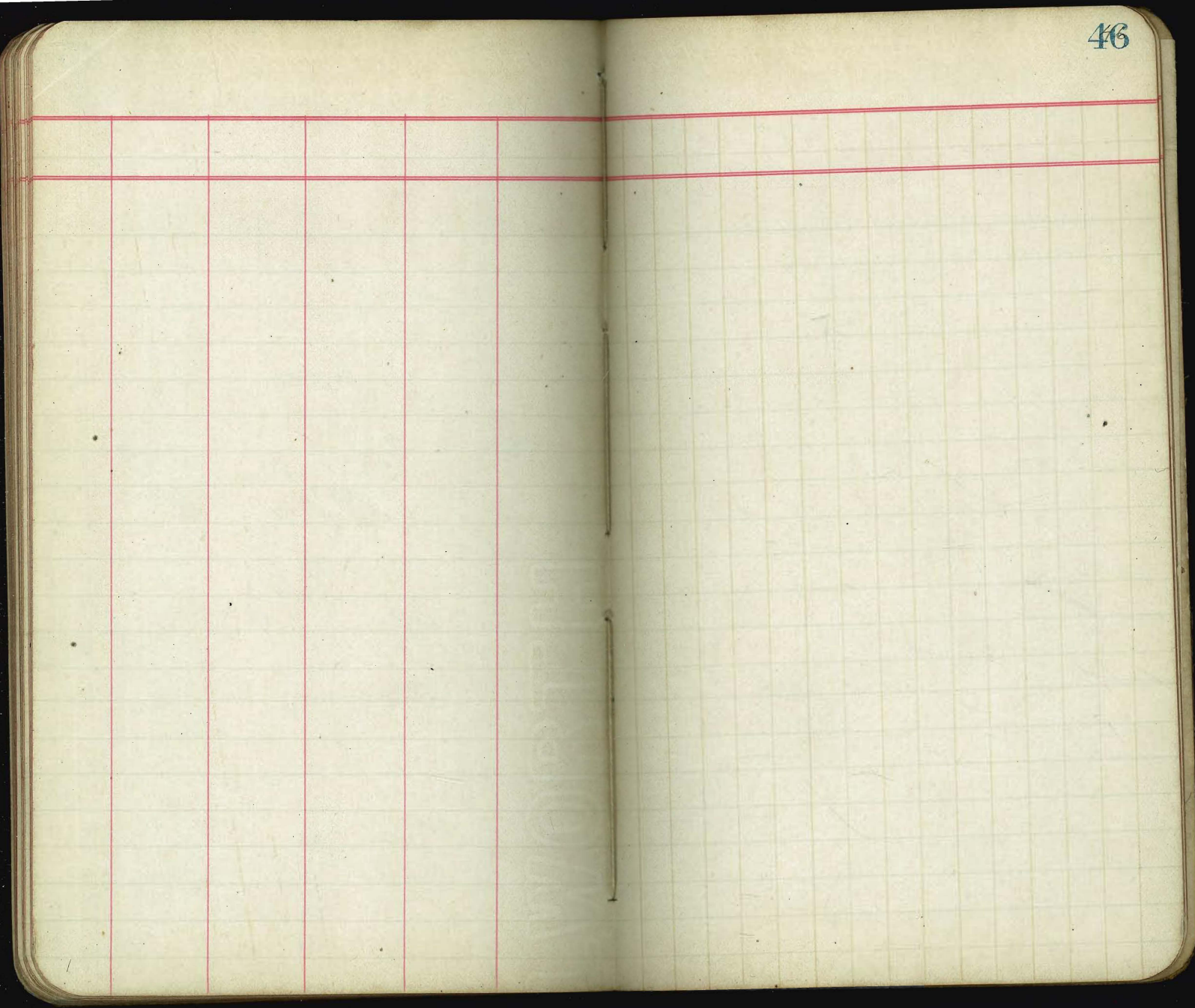


25.6 cy.



16 cy







The image shows an open notebook with two pages. The left page is ruled with a grid of 6 columns and 20 rows. The right page is ruled with a grid of 15 columns and 20 rows. The number 47 is written in the top right corner of the right page. The notebook is placed on a dark background.

50 4° 24' 6"

100 3° 00' 10"

74<sup>5</sup> 16° 20' 6"

+ 25

+ 50

+ 65

} 20° 00' 00"



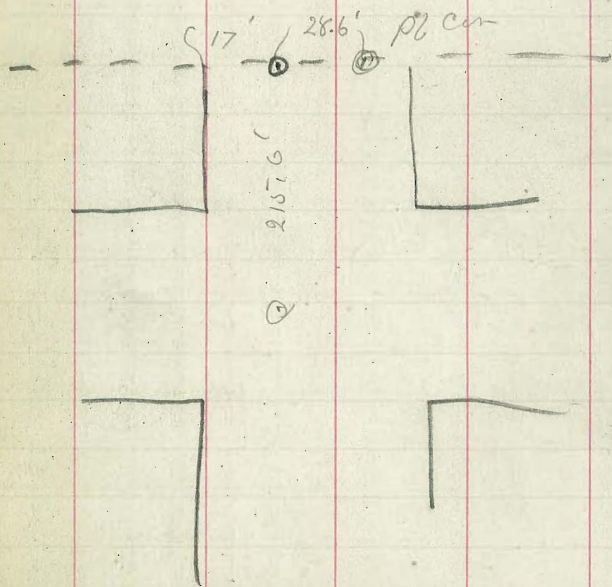


27.79  
 1000  
 730  
 320  
 60  
 115  
 700

9000

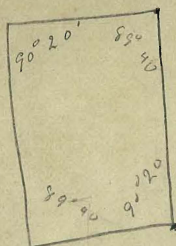
+25 345  
 +50 730  
 +75 1115  
 1500  
 +25 1845  
 +50 2230  
 +75 2615

198+54 R St  
 202+33 S St  
 206+12.5 T St  
 209+92.4 U St  
 213+79.5 Olive Ave

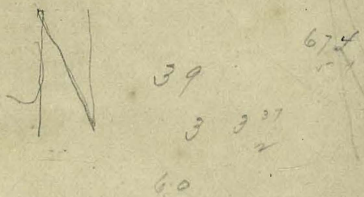


Bm 30 & R 37.01.

$$\begin{array}{r} 178 \ 80 \\ 15 \ 40 \\ \hline 337 \ 120 \end{array}$$



$$\begin{array}{r} 30 \\ 13 \\ \hline 17 \end{array}$$



$$\begin{array}{r} 213,74.5 \\ 38,00.0 \\ \hline 217,5.4.5 \end{array}$$

Degrees

81  
80  
79  
78  
77  
76  
75  
74  
73  
72  
71  
70  
69  
68  
67  
66  
65  
64  
63  
62  
61  
60  
59  
58  
57  
56  
55  
54  
53  
52  
51  
50  
49

Degrees

als,



TRAVERSE TABLE FOR TRANSIT BOOK.

From 1° to 90° for a distance of 100.

*Return to City Engineers Office  
City Hall, San Diego, Cal.*

Degrees.	DEGREES.		¼ DEGREE.		¼ DEGREE.		¼ DEGREE.		Degrees.
	Lat.	Dep.	Lat.	Dep.	Lat.	Dep.	Lat.	Dep.	
0			100.00	0.44	100.00	0.87	99.99	1.31	81
1	99.98	1.75	99.98	2.18	99.97	2.62	99.95	3.05	80
2	99.94	3.49	99.92	3.93	99.91	4.36	99.88	4.80	79
3	99.86	5.23	99.84	5.67	99.81	6.10	99.79	6.54	78
4	99.76	6.98	99.73	7.41	99.69	7.85	99.66	8.28	77
5	99.62	8.72	99.58	9.15	99.54	9.58	99.50	10.02	76
6	99.45	10.45	99.41	10.89	99.36	11.32	99.31	11.75	75
7	99.25	12.19	99.20	12.62	99.14	13.05	99.09	13.49	74
8	99.03	13.92	98.97	14.35	98.90	14.78	98.84	15.21	73
9	98.77	15.64	98.70	16.07	98.63	16.50	98.56	16.93	72
10	98.48	17.36	98.40	17.79	98.33	18.22	98.25	18.65	71
11	98.16	19.08	98.08	19.51	97.99	19.94	97.90	20.36	70
12	97.81	20.79	97.72	21.22	97.63	21.64	97.53	22.07	69
13	97.44	22.50	97.34	22.92	97.24	23.34	97.13	23.77	68
14	97.03	24.19	96.92	24.62	96.81	25.04	96.70	25.46	67
15	96.59	25.88	96.48	26.30	96.36	26.72	96.25	27.14	66
16	96.13	27.56	96.00	27.98	95.88	28.40	95.76	28.82	65
17	95.63	29.24	95.50	29.65	95.37	30.07	95.24	30.49	64
18	95.11	30.90	94.97	31.32	94.83	31.73	94.69	32.14	63
19	94.55	32.56	94.41	32.97	94.26	33.38	94.12	33.79	62
20	93.97	34.20	93.82	34.61	93.67	35.02	93.51	35.43	61
21	93.36	35.84	93.20	36.24	93.04	36.65	92.88	37.06	60
22	92.72	37.46	92.55	37.86	92.39	38.27	92.22	38.67	59
23	92.05	39.07	91.88	39.47	91.71	39.87	91.53	40.27	58
24	91.35	40.67	91.18	41.07	91.00	41.47	90.81	41.87	57
25	90.63	42.26	90.45	42.66	90.26	43.05	90.07	43.44	56
26	89.88	43.84	89.69	44.23	89.49	44.62	89.30	45.01	55
27	89.10	45.40	88.90	45.79	88.70	46.17	88.50	46.56	54
28	88.29	46.95	88.09	47.33	87.88	47.72	87.67	48.10	53
29	87.46	48.18	87.25	48.86	87.04	49.24	86.82	49.62	52
30	86.60	50.00	86.38	50.38	86.16	50.75	85.94	51.13	51
31	85.72	51.50	85.49	51.88	85.26	52.25	85.04	52.62	50
32	84.80	52.99	84.57	53.36	84.34	53.73	84.10	54.10	49
33	83.87	54.16	83.63	54.83	83.39	55.19	83.15	55.56	48
34	82.90	55.92	82.66	56.28	82.41	56.64	82.16	57.00	47
35	81.92	57.36	81.66	57.71	81.41	58.07	81.16	58.42	46
36	80.90	58.78	80.64	59.13	80.39	59.48	80.13	59.83	45
37	79.86	60.18	79.60	60.53	79.34	60.88	79.07	61.22	44
38	78.80	61.57	78.53	61.91	78.26	62.25	77.99	62.59	43
39	77.71	62.93	77.44	63.27	77.16	63.61	76.88	63.94	42
40	76.60	64.28	76.32	64.61	76.04	64.94	75.76	65.28	41
41	75.47	65.61	75.18	65.93	74.90	66.26	74.61	66.59	40
42	74.31	66.91	74.02	67.24	73.73	67.56	73.43	67.88	39
43	73.14	68.20	72.84	68.52	72.54	68.84	72.24	69.15	38
44	71.93	69.47	71.63	69.78	71.33	70.09	71.02	70.40	37
45	70.71	70.71							36

Published by Edward Denny & Co., Stationers, Drawing Materials,  
Mathematical Instruments, Etc., San Francisco.

Return to City Engineers Office  
City Hall, San Diego, Cal.

Handwritten calculations and notes on the left page, including:

- 1650
- 1780.62
- 45
- 114
- 66.4
- 1154.13
- 2653
- 33.6
- 2754.2
- 90
- 90
- 22
- 64
- 270.01
- 11.89
- 138.12
- 1.13
- 6.35
- 66
- 359.25
- 38.10
- 178.27
- 35.0
- 178.27
- 14.00
- 178.41