

354B

CITY HALL

IND

400  
LEVEL

F.B. 354B



Published by H. S. CROCKER COMPANY, Stationers, Drawing Materials, and Mathematical Instruments, San Francisco.

Table showing the difference of latitude and departure in running 80 chains at any course from 1 to 60 minutes.

MINUTES.	LKS.	MINUTES.	LKS.	MINUTES.	LKS.
1.....	2 $\frac{1}{2}$	21.....	49	41.....	95 $\frac{3}{4}$
2.....	4 $\frac{2}{3}$	22.....	51 $\frac{1}{2}$	42.....	98
3.....	7	23.....	53 $\frac{1}{2}$	43.....	100 $\frac{1}{2}$
4.....	9 $\frac{1}{2}$	24.....	56	44.....	102 $\frac{1}{2}$
5.....	11 $\frac{2}{3}$	25.....	58 $\frac{1}{2}$	45.....	105
6.....	14	26.....	60 $\frac{1}{2}$	46.....	107 $\frac{1}{2}$
7.....	16 $\frac{1}{2}$	27.....	63	47.....	109 $\frac{1}{2}$
8.....	18 $\frac{2}{3}$	28.....	65 $\frac{1}{2}$	48.....	112
9.....	21	29.....	67 $\frac{1}{2}$	49.....	114 $\frac{1}{2}$
10.....	23 $\frac{1}{2}$	30.....	70	50.....	116 $\frac{1}{2}$
11.....	25 $\frac{2}{3}$	31.....	72 $\frac{1}{2}$	51.....	119
12.....	28	32.....	74 $\frac{1}{2}$	52.....	121 $\frac{1}{2}$
13.....	30 $\frac{1}{2}$	33.....	77	53.....	123 $\frac{1}{2}$
14.....	32 $\frac{2}{3}$	34.....	79 $\frac{1}{2}$	54.....	126
15.....	35	35.....	81 $\frac{1}{2}$	55.....	128 $\frac{1}{2}$
16.....	37 $\frac{1}{2}$	36.....	84	56.....	130 $\frac{1}{2}$
17.....	39 $\frac{2}{3}$	37.....	86 $\frac{1}{2}$	57.....	133
18.....	42	38.....	88 $\frac{1}{2}$	58.....	135 $\frac{1}{2}$
19.....	44 $\frac{1}{2}$	39.....	91	59.....	137 $\frac{1}{2}$
20.....	46 $\frac{2}{3}$	40.....	93 $\frac{1}{2}$	60.....	140

TABLE FOR RUNNING ON SLOPES.

**MICROFILMED**  
 In the following table the first column shows the angle, the second the number of links to be added to a chain on the slopes, to make one chain, horizontal measurement.

DEC 1 1964

ANGLE	COR. IN LINKS	ANGLE	COR. IN LINKS	ANGLE	COR. IN LINKS	ANGLE	COR. IN LINKS
0		0		0		0	
4	0.24	11	1.88	18	5.14	25	10.54
5	0.38	12	2.24	19	5.76	26	11.26
6	0.55	13	2.63	20	6.42	27	12.24
7	0.76	14	3.06	21	7.11	28	13.37
8	0.98	15	3.53	22	7.85	29	14.34
9	1.24	16	4.02	23	8.64	30	15.47
10	1.55	17	4.56	24	9.47	35	22.07



LEVEL BOOK

No. 400



MANUFACTURED BY

*A. S. Crocker Co.*

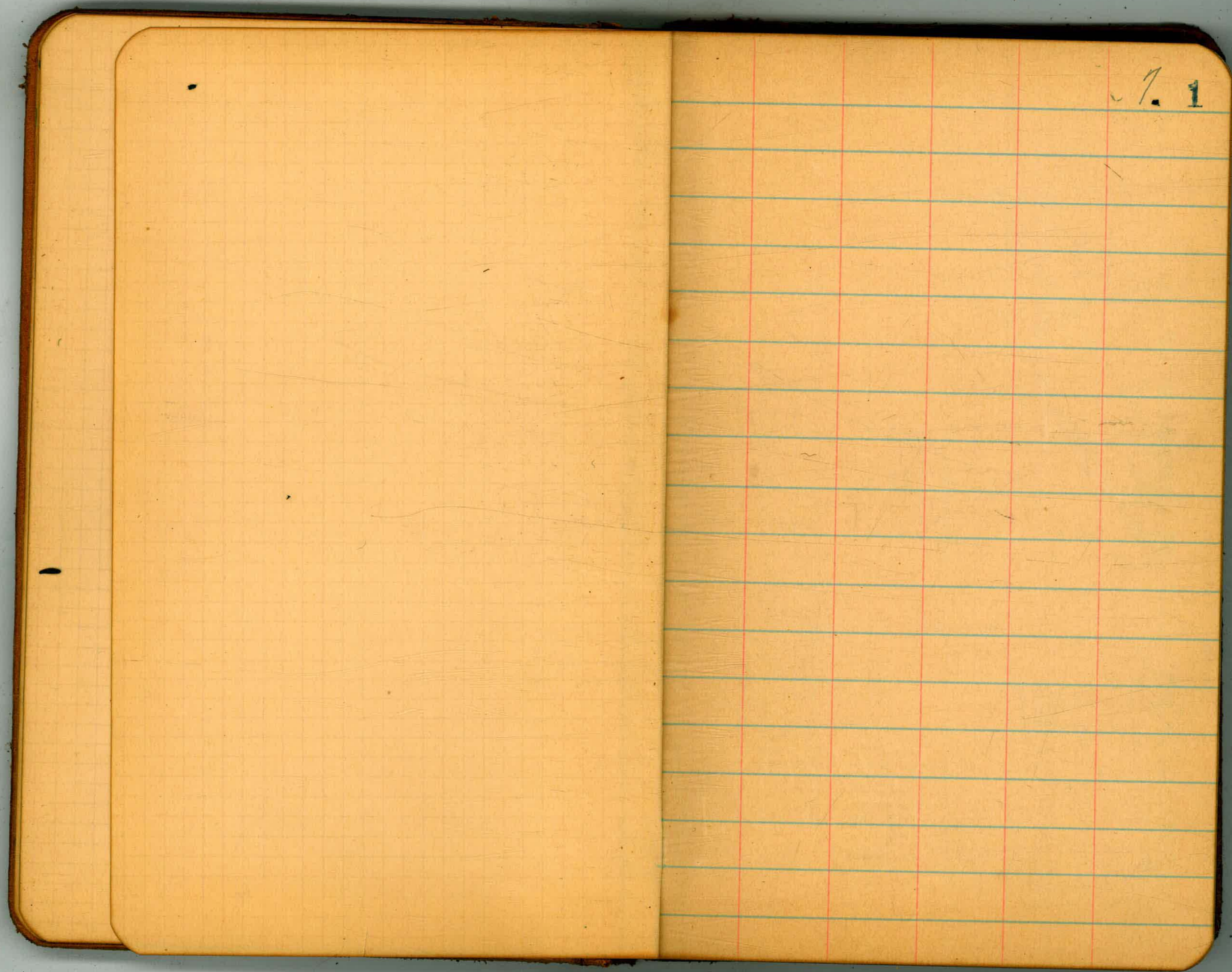
SAN FRANCISCO

and

SACRAMENTO

FROM  
 Loring's Book Store







sec section Pine St from Hartensia Witherby  
 " 50' 5' 1/2"

Bunkle  
 Station  
 Evans

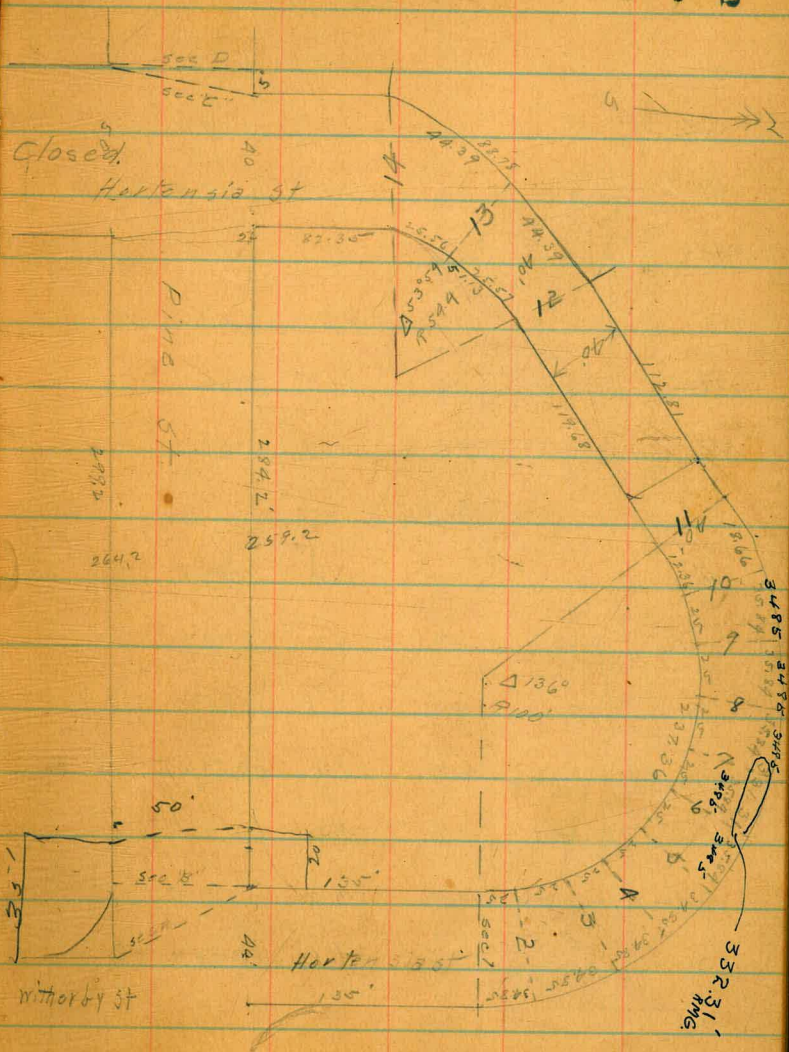
B.M.	3.94	270.26		
T.P.	2.28	260.87	11.67	258.59

sec "H" W.L. Witherby

S	12.5	248.4
Ch	12.3	248.6
1/4	11.7	249.2
M	10.6	250.3
1/4	9.3	251.6
Ch	9.0	251.9
N	7.8	253.1

sec "B" W.L. Hartensia

N	7.8	253.1
Ch	8.5	252.4
1/4	8.6	252.3
M	9.4	251.5
1/4	9.7	251.2
Ch	9.7	251.2
S	9.7	251.2





260.87

0+75 W. of Sec B

S	6.5	254.4
Crk	6.6	254.3
"A	7.0	253.9
M	6.9	254.0
"A	6.3	254.6
Crk	6.2	254.7
N	5.7	255.2

0+50

N	3.4	257.5
Crk	3.9	257.0
"A	3.7	257.2
M	4.4	256.5
"A	4.3	256.6
Crk	4.3	256.6
S	4.0	256.9

260.87

0+75

3 3

S	1.9	259.0
Crk	2.1	258.8
"A	2.0	258.9
M	2.0	258.9
"A	1.9	259.5
Crk	1.4	259.5
N	1.2	259.7

T.P. 10.67 270.74 0.80 260.07

1+0

N	9.1	261.6
Crk	9.3	261.4
"A	9.2	261.5
M	9.8	260.9
"A	9.8	260.9
Crk	9.9	260.8
S	9.7	261.0



270.74

1+75

S	7.3	263.4
Crk	7.7	262.8
"A	7.9	262.8
M	8.0	262.7
"A	7.8	263.4
Crk	7.3	263.4
N	7.0	263.7

1750

N	5.4	265.3
Crk	5.8	265.4
"A	5.1	265.6
M	6.0	264.7
"A	5.9	264.8
Crk	5.9	264.8
S	5.3	265.4

270.74

1+75

4

4

S	4.7	266.0
Crk	4.9	265.8
"A	5.0	265.7
M	4.8	265.9
"A	4.8	265.9
Crk	4.7	266.0
N	4.6	266.1

240

N	4.7	266.0
Crk	4.6	266.1
"A	4.9	266.3
M	4.7	266.0
"A	4.7	266.0
Crk	4.6	266.1
S	4.5	266.2



270.79

2+25

S	4.4	266.3
crk	4.7	266.6
"A	4.7	266.0
M	5.0	265.7
"A	5.0	265.7
crk	4.9	265.8
N	5.1	265.6

2+50

N	6.2	264.5
crk	5.5	265.2
"A	5.5	265.2
M	5.5	265.2
"A	5.9	265.3
crk	5.4	265.3
S	9.5	266.2
T.P.	6.89	273.11
	4.57	266.22

273.11

2+54 on N 279<sup>2</sup> 2045 N of sec B = FL. Hortensia st Sec A

one tick P 25

S	7.2	265.9
crk	7.5	265.6
"A	7.7	265.4
M	7.8	265.3
"A	8.1	265.0
crk	8.3	264.8
N	9.0	264.7

E. Crk

N	8.8	264.3
crk	8.4	264.7
"A	8.1	265.0
M	7.8	265.3
"A	7.7	265.4
crk	7.8	265.3
S	7.9	265.7



273.11

E "4

S	7.2	265.9
Colo	7.6	265.5
"A	7.7	265.4
M	7.9	265.2
"A	8.2	264.9
Colo	8.2	264.9
N	8.7	264.4

center

N	8.7	264.4
Colo	8.2	264.9
"A	8.1	265.0
M	7.8	265.3
"A	7.5	265.6
Colo	7.5	265.6
S	7.0	265.9

6  
6

273.11 W "4

S	7.0	266.1
Colo	7.6	265.5
"A	7.4	265.7
M	7.7	265.4
"A	7.8	265.3
Colo	8.1	265.0
N	8.5	264.6

W. curb

N	8.9	264.7
Colo	8.1	265.0
"A	7.8	265.3
M	7.3	265.8
"A	7.6	265.5
Colo	7.4	265.7
S	6.9	266.2



273.11

sec "C"

S	6.7	266.4
crb	7.3	265.8
"A	7.2	265.9
M	7.3	265.8
"A	7.6	265.5
crb	7.7	265.4
N	8.3	264.8

sec "D"

N	8.2	264.9
crb	7.5	265.6
"A	7.5	265.6
M	7.3	265.8
"A	7.2	265.9
crb	7.3	265.8
S	6.7	266.4

273.11

0+25 W of sec D

S	6.2	266.9
crb	7.0	266.1
"A	6.9	266.2
M	6.9	266.2
"A	7.1	266.0
crb	7.0	266.1
N	7.5	265.6

0+50

N	6.9	266.2
crb	6.9	266.7
"A	6.3	266.8
M	6.9	266.7
"A	6.9	266.7
crb	6.9	266.7
S	5.8	267.3



273.11

0475

S	5.4	267.7
crb	5.8	267.3
"A	5.8	267.3
M	5.7	267.4
"A	5.7	267.4
crb	5.8	267.3
N	6.3	266.8

170

N	5.7	267.4
crb	5.8	267.8
"A	5.2	267.9
M	5.2	267.8
"A	5.4	267.7
crb	5.5	267.6
S	5.2	267.2

273.11

1725

8

8

S	5.0	268.1
crb	5.1	268.0
"A	4.8	268.3
M	5.0	268.1
"A	4.9	268.2
crb	5.0	268.1
N	5.1	268.0

1750

N	4.7	268.4
crb	5.2	267.9
"A	5.1	268.0
M	4.5	268.6
"A	4.4	268.7
crb	4.5	268.6
S	4.3	268.8



273.15

1+75

S	3.5	269.3
erb	4.1	269.0
"A	4.0	269.1
M	4.2	269.9
"A	4.7	268.4
erb	4.9	268.2
N	4.4	268.7

2+0

N	4.1	269.0
erb	4.3	268.8
"A	4.2	268.9
M	4.0	269.1
"A	3.6	269.5
erb	3.9	269.2
S	3.6	269.5

9 9

2+25

S	3.4	269.7
erb	3.6	269.5
"A	3.5	269.6
M	3.6	269.5
"A	3.8	269.3
erb	4.0	269.1
N	3.8	269.3

2+50

N	3.2	269.9
erb	3.3	269.8
"A	3.3	269.8
M	3.3	269.8
"A	3.2	269.9
erb	3.4	269.7
S	3.0	270.1



273.11

2+75

S 2.7 270.4

Crb 2.7 270.2

" 3.0 270.1

M 3.1 270.6

" 3.0 270.1

Crb 3.0 270.1

N 3.1 270.0

310 W of D = E.L. Trias at 80'

N 2.7 270.4

Crb 2.7 270.4

" 2.7 270.4

M 2.8 270.3

" 2.8 270.3

Crb 2.7 270.4

S 2.6 270.5

T.P. 3.2 274.32 2.71 270.40 N.E. 406

10

10

27432 E. Crb

S 3.6 270.7

Crb 3.9 270.4

" 3.8 270.5

M 3.8 270.5

" 3.7 270.6

Crb 3.7 270.6

N 4.1 270.2

E "A

N 4.3 270.0

Crb 4.1 270.2

" 4.0 270.3

M 4.0 270.3

" 3.8 270.3

Crb 3.9 270.4

S 3.9 270.4



274.32

Center

S	4.1	270.2
orb	4.0	270.3
"4	4.0	270.3
M	4.0	270.3
"4	3.8	270.5
orb	3.8	270.5
N	3.9	270.4

W 14

N	3.8	270.5
orb	3.7	270.6
"4	3.5	270.8
M	3.7	270.6
"4	4.3	270.0
orb	4.4	269.9
S	3.9	270.4

274.32

W. Cupk

S	3.7	270.6
orb	4.5	269.8
"4	4.3	270.0
M	3.8	270.5
"4	3.7	270.6
orb	3.6	270.7
N	3.7	270.6

W.L. Trias St

N	3.6	270.7
orb	3.9	270.4
"4	3.6	270.7
M	3.8	270.5
"4	4.0	270.3
orb	3.9	270.4
S	3.7	270.6

11



274.32

0+25 W

S	4.0	270.3
crk	4.0	270.4
"A	3.8	270.5
M	3.7	270.6
"A	3.7	270.6
crk	3.8	270.5
N	3.7	270.6

0+50

N	3.6	270.7
crk	4.1	270.2
"A	4.0	270.3
M	4.0	270.3
"A	4.0	270.3
crk	4.2	270.1
S	4.1	270.2

274.32

0+75

12

12

S	4.3	270.0
crk	4.2	270.1
"A	4.1	270.2
M	4.1	270.2
"A	4.2	270.1
crk	4.3	270.0
N	4.3	270.0

1+0

N	3.8	270.5
crk	4.3	270.0
"A	4.4	269.9
M	4.2	270.1
"A	4.3	270.0
crk	4.5	269.8
S	4.4	269.9



274.32

1725

S	4.6	269.7
Crk	4.8	269.5
"A	4.7	269.6
M	4.7	269.6
"A	4.8	269.5
Crk	4.4	269.9
N	3.9	270.4

1750

N	4.1	270.2
Crk	4.8	269.5
"A	5.1	269.1
M	5.1	269.2
"A	5.3	269.0
Crk	5.2	269.1
S	4.9	269.4

274.32

1775

13  
13

S	5.1	269.2
Crk	5.6	268.7
"A	5.4	268.9
M	5.3	269.0
"A	5.4	268.9
Crk	5.6	268.7
N	5.3	269.0

270

N	5.6	268.9
Crk	5.5	268.8
"A	5.7	268.6
M	5.7	268.6
"A	5.9	268.4
Crk	6.0	268.3
S	5.5	268.8



274.32

2+25

S		5.7	268.6
Crk		6.1	268.2
"A		6.2	268.1
M		6.2	268.1
"A		6.1	268.2
Crk		6.0	268.3
N		6.0	268.3
T.P.	3.07	271.21	615 268.19

2+50

N		3.1	268.1
Crk		3.0	268.2
"A		3.0	268.2
M		3.1	268.1
"A		3.2	268.0
Crk		3.3	267.9
S		2.8	268.4

271.21

2+75

14 14

S		3.2	268.0
Crk		3.6	267.6
"A		3.7	267.5
M		3.8	267.4
"A		3.6	267.6
Crk		3.6	267.6
N		3.6	267.6

3+02 F.L. Ampudia st 50' wide

N		4.3	266.9
Crk		4.3	266.9
"A		4.2	267.0
M		4.2	267.0
"A		4.5	266.7
Crk		4.3	266.9
S		3.8	267.4



271.21

## E. curb

S	4.4	266.8
crk	4.6	266.6
"A	4.6	266.6
M	4.4	266.8
"A	4.4	266.8
crk	4.4	266.8
N	4.5	266.7

## E "A

N	5.0	266.2
crk	4.7	266.5
"A	4.6	266.6
M	4.4	266.8
"A	4.2	267.0
crk	4.5	266.7
S	4.7	266.5

## Center

15

15

S	5.1	266.1
crk	4.9	266.3
"A	4.4	266.8
M	4.9	266.3
"A	4.9	266.3
crk	5.0	266.2
N	5.1	266.1

## N "A

N	5.4	265.5
crk	5.1	266.1
"A	5.1	266.1
M	4.9	266.3
"A	4.8	266.4
crk	5.1	266.1
S	5.3	265.9



271.21

W. C. V. A.

S	5.3	265.9
colu	5.2	266.0
"	4.8	266.4
M	5.0	266.2
"	5.2	266.0
colu	5.2	266.0
N	5.5	265.7

W. L. Ampudia-St

N	5.3	265.9
colu	5.5	265.7
"	5.6	265.6
M	5.3	265.9
"	5.3	265.9
colu	5.4	265.8
S	5.3	265.9
T.P.	1.40	267.69
4.92	266.29	cta May

0725 W

S	2.6	265.1
colu	2.7	
"	2.4	
M	2.6	265.1
"	2.9	
colu	2.9	
N	2.8	264.9

0450

N	2.5	263.7
colu	3.8	
"	3.8	
M	3.5	264.2
"	3.3	
colu	3.0	
S	3.4	264.3

 16 16  
 6/130  
 10 Evans



267.69

0+25

S	4.4	263.3
crk	4.6	
" <sup>s</sup>	4.5	
M	4.5	263.2
" <sup>o</sup>	4.7	
crk	5.0	
N	5.4	262.3

1+0

N	5.2	261.9
crk	5.6	
" <sup>o</sup>	5.6	
M	5.3	262.4
" <sup>o</sup>	5.2	
crk	5.4	
S	5.0	262.7

17  
17

1+25

S	6.0	261.7
crk	6.0	
" <sup>o</sup>	6.1	
M	6.3	261.4
" <sup>o</sup>	6.4	
crk	6.9	
N	7.0	260.7

-1+50

N	6.9	260.8
crk	6.6	
" <sup>o</sup>	6.8	
M	7.2	260.5
" <sup>o</sup>	7.2	
crk	7.3	
S	7.2	260.5
T.P.	1.16	262.04
	6.81	260.88



262.04

1+75

S	2.2	259.8
code	2.5	
"A	2.3	
M	2.2	259.8
"A	2.0	
code	1.8	
N	1.9	260.1

2+10

N	2.3	259.7
code	2.3	
"A	2.5	
M	3.1	258.8
"A	3.1	
code	3.7	
S	3.2	258.8

18  
18

2+25

S	5.2	256.8
code	4.8	
"A	4.8	
M	4.6	257.4
"A	4.1	
code	3.8	
N	3.2	258.8

2+50

N	6.3	255.7
code	6.8	
"A	7.0	
M	7.5	254.5
"A	5.1	
code	2.8	
S	9.9	252.6



262.04

2175

S		13.7	248.3
crk		13.3	
"A		13.0	
M		12.5	249.5
"A		12.3	
crk		11.1	
N		10.8	251.2
T.P	2.55	252.53	12.06 249.98

3+0 = E. L. Arista st 50' wide

N		4.9	244.6
crk		5.2	
"A		5.3	
M		5.8	246.7
"A		6.3	
crk		6.5	
S		7.0	245.5

19 19

E. Crk

S		8.0	244.5
crk		7.2	
"A		7.0	
M		7.1	245.4
"A		6.5	
crk		6.0	
N		5.8	246.7

E "A

N		6.2	246.3
crk		7.0	
"A		7.1	
M		7.5	245.0
"A		7.5	
crk		7.5	
S		8.3	244.2



452.53

Center

S	9.3	2432
erb	8.4	
"A	8.3	
M	8.4	2441
"A	8.1	
erb	7.8	
N	7.4	2451

W "A

N	8.6	2430
erb	8.6	
"A	8.9	
M	8.9	2436
"A	8.8	
erb	9.0	
S	10.2	2423

2020

W. curb

S	10.3	2422
erb	9.5	
"A	9.3	
M	9.2	2433
"A	9.2	
erb	8.9	
N	9.0	2435

W. L. Arista St

N	9.7	2428
erb	9.6	
"A	10.0	
M	10.2	2423
"A	10.3	
erb	10.5	
S	11.1	2414



252.53

0+25 W

S	12.4	240.1
erb	11.6	
"A	11.6	
M	11.5	241.0
"A	10.9	
erb	10.3	
N	9.7	242.8

0+50

N	11.8	240.7
erb	11.9	
"A	12.1	
M	12.7	239.8
"A	12.0	
erb	12.6	
S	13.2	239.3

2121

0+75

S	14.1	238.4
erb	13.1	
"A	13.1	
M	13.0	239.5
"A	12.4	
erb	12.4	
N	12.0	240.5

1+0

N	12.0	240.5
erb	12.4	
"A	12.3	
M	13.0	239.5
"A	13.3	
erb	13.8	
S	14.3	238.2



252.53

1725

S	13.8	238.7
Color	12.7	
"A	12.9	
M	12.1	240.4
"A	11.1	
Color	10.9	
N	10.2	249.3

1750

N	8.2	244.3
Color	9.0	
"A	8.9	
M	10.4	242.1
"A	10.8	
Color	11.1	
S	12.3	240.2

22  
22

1775

S	10.9	242.1
Color	10.0	
"A	8.5	
M	7.5	245.0
"A	6.3	
Color	6.0	
N	5.0	247.6

270

N	0.1	252.4
Color	2.1	
"A	2.8	
M	3.8	248.7
"A	4.8	
Color	6.2	
S	8.1	244.4

T. P.	3.28	256.84	3.97	248.56
-------	------	--------	------	--------



25687

2+25

5	9.6	247.2
crb	7.5	
"	7.0	
M	4.9	251.2
"	3.7	
crb	3.3	
N	2.3	254.5

2+50

N	2.7	254.1
crb	3.3	
"	3.5	
M	4.2	252.6
"	5.7	
crb	6.2	
5	7.9	248.9

23

23

2+75

5	7.0	249.8
crb	6.2	
"	6.0	
M	5.0	251.8
"	4.9	
crb	4.7	
N	4.3	252.5

3+0 = F.L. Conde St

N	6.0	250.8
crb	6.8	
"	6.9	
M	6.7	250.1
"	7.2	
crb	8.0	
5	8.3	248.5



24  
24



x. sect 1011 Hartley's 57 in Mission Hills No 2  
40' wide 10' walls 5' 2/3

25  
25

B.M. 5811 east Faulkner's Witherly's Station 26639

B.M. 3.92 270.26

0.90 259.49 11.67 258.59

NOTE - left line of this st will be marked west in all sections

E 13.8 245.7

Calc 10.2 249.3

3. 10.1 249.4

4 9.0 250.5

5 8.3 251.2

Calc 7.7 251.8

W 6.5 253.0

at 25 N of Pine

W 4.7 254.5

Calc 5.9 253.6

4 6.6 252.9

M 7.4 252.1

4 8.0 250.0

Calc 8.5 250.0

E 11.1 248.4



259.99

0+50

E	2.4	251.1
cut	6.5	253.0
"	6.3	253.2
M	5.2	254.3
"	4.5	255.0
cut	4.0	255.5
W	3.2	256.3

0+75

W	3.0	256.5
cut	3.7	255.6
"	4.5	255.0
M	5.5	254.0
"	6.0	253.5
cut	6.3	253.2
E	7.3	252.2

259.99

1+0

26  
26

E	7.7	251.5
cut	6.9	253.1
"	6.2	253.8
M	5.7	253.8
"	5.0	254.5
cut	4.6	254.9
W	3.6	255.9

1+35 = section 1 page 2 see sketch

W	3.5	256.0
cut	4.7	254.8
"	5.2	254.3
M	6.1	253.4
"	6.6	252.9
cut	7.0	252.5
E	7.3	250.2



259.99  
500 2

F		2.1	251.4	
cube		6.6	252.9	
"A		6.5	253.0	
M		5.2	253.7	
"A		5.2	254.3	
cube		4.6	254.9	
W		3.5	254.0	
T.P.	7.22	262.99	3.72	255.77
	500 3			
W		6.1	256.9	
cube		7.4	255.6	
"A		7.7	255.1	
M		8.1	254.9	
"A		7.9	253.1	
cube		10.0	253.0	
E		10.0	253.0	

262.99  
500 4

27 27

F		9.2	253.8	
cube		8.2	254.8	
"A		7.6	255.4	
M		7.0	256.0	
"A		6.6	256.4	
cube		6.1	256.9	
W		5.2	257.8	
	500 5			
W		5.2	257.8	
cube		6.4	256.6	
"A		6.8	256.2	
M		7.3	255.7	
"A		8.1	254.9	
cube		8.7	254.3	
E		9.8	253.2	



262.99

sec 6

E	9.0	254.0
crk	7.9	256.1
"4	7.9	256.6
M	7.0	256.0
"4	6.6	256.4
crk	6.2	256.8
W	5.2	257.5

sec 7

W	5.1	257.9
crk	5.6	257.4
"4	6.0	257.0
M	6.3	256.7
"4	6.6	256.4
crk	6.8	256.2
E	7.3	255.7

28

28

sec 8

E	7.1	256.9
crk	6.5	256.5
"4	6.1	256.9
M	5.8	257.2
"4	5.5	257.0
crk	5.4	257.6
W	4.9	257.1

sec 9

W	5.0	258.0
crk	5.9	257.1
"4	6.3	256.7
M	7.0	256.0
"4	7.3	255.7
crk	7.7	255.3
E	7.9	254.3



262.99

SEC 10

E	10.5	252.5
crk	8.9	254.1
"A	8.3	254.7
M	7.7	255.3
"A	7.1	255.9
crk	6.5	256.5
W	5.5	257.5

X-SEC 11

W	5.3	257.7
crk	6.5	256.5
"A	7.2	255.8
M	8.0	255.0
"A	8.8	254.2
crk	9.5	253.5
E	11.2	251.8

2929

0+25 W of 30011

E	10.9	252.1
crk	9.2	253.8
"A	8.3	254.7
M	7.5	255.5
"A	6.9	256.1
crk	6.1	256.9
N	5.0	258.0

0+50

W	4.4	258.6
crk	5.6	257.4
"A	6.3	256.7
M	7.0	256.0
"A	7.7	255.3
crk	8.3	254.7
E	10.2	252.8



262.99

0+75

E	2.5	253.2
crk	2.1	254.9
"/4	7.2	255.8
M	6.6	256.4
"/4	5.8	257.2
crk	5.2	257.8
W	4.1	258.9

SEC 12

W	3.0	260.0
crk	3.7	259.1
"/4	5.2	257.8
M	5.8	257.2
"/4	6.1	256.9
crk	6.8	256.2
E	8.7	254.3

SEC 13

30  
30

E	2.3	260.7
crk	2.8	260.7
"/4	2.3	260.7
M	2.1	260.9
"/4	1.9	261.1
crk	1.6	261.4
W	1.4	261.6
T.P.	8.27	268.30
	2.96	260.03

1-SEC 14

W	5.6	262.7
crk	5.6	262.7
"/4	5.6	262.7
M	5.5	262.8
"/4	5.8	262.5
crk	5.8	263.0
E	5.1	263.2



268.30

0+25' S of Sec 14

E	4.1	264.2
cut	4.3	264.0
"A	4.5	263.8
M	4.6	263.7
"A	4.7	263.6
cut	4.8	263.5
W	4.7	263.6

0+50

W	4.5	263.8
cut	4.4	263.9
"A	4.1	264.2
W	4.1	264.2
"A	4.1	264.2
cut	4.1	264.2
E	3.6	264.7

31/31

0+82<sup>37</sup> = N. Pine

E	3.4	264.9
cut	3.7	264.6
"A	3.9	264.4
M	3.9	264.4
"A	3.9	264.4
cut	4.1	264.2
W	4.2	264.1



1. section Madrona st Witherby to Artists st  
 " " 50' wide 5' 1/2" 7/10  
 B.M. 1.42 267.76

B.M. 1.42 267.76  
 M.L. Witherby

N	2.3	265.5
crk	2.5	
"	2.5	
N	4.2	263.6
"	4.2	
crk	4.2	
S	4.7	263.1
S	5.0	262.8
crk	4.7	
"	4.3	
N	4.1	263.7
"	2.9	
crk	2.9	
N	2.2	265.6

0+25' W

3232

0+50

N	2.5	265.3
crk	3.1	
"	3.3	
N	4.1	263.7
"	4.2	
crk	4.6	
S	5.4	262.4
S	5.3	262.5
crk	4.9	
"	4.5	
N	4.2	263.6
"	3.2	
crk	3.1	
N	2.8	265.0

0+75



267.76

140

N	3.3	264.5
cube	3.4	
"	3.5	
M	4.8	263.0
"	4.9	
cube	5.2	
S	5.8	262.0

1425

S	6.4	261.3
cube	6.0	
"	5.7	
M	5.0	262.5
"	4.0	
cube	3.9	
N	3.6	264.2

267.76

1450

N	3.8	264.0
cube	4.1	
"	4.2	
M	5.4	262.2
"	6.0	
cube	6.3	
S	6.8	261.0

1475

S	6.8	261.0
cube	6.6	
"	6.3	
M	5.7	262.1
"	4.7	
cube	4.5	
N	4.2	263.5

33

33



267.76

270

N	4.4	263.4
crk	4.5	
"A	4.6	
M	6.0	261.5
"A	6.6	
crk	7.1	
S	7.3	260.5

2725

S	7.4	260.4
crk	6.9	
"A	6.5	
M	6.2	261.6
"A	4.9	
crk	5.0	
N	4.6	263.2

267.76

2750

3434

N	4.7	263.1
crk	5.1	
"A	5.2	
M	6.0	261.8
"A	6.2	
crk	6.5	
S	7.1	260.7

2775

S	6.4	261.4
crk	6.2	
"A	5.8	
M	5.6	262.2
"A	4.9	
crk	4.7	
N	4.6	263.2
T.P.	8.00	271.69
	4.07	263.69



271.69

3+2

N	8.2	263.5
crk	8.6	
"	8.7	
M	9.4	262.3
"	9.7	
crk	9.7	
S	9.9	261.8

3+25

S	10.0	261.7
crk	9.2	
"	9.3	
M	9.1	262.6
"	8.9	
crk	8.6	
N	8.1	263.6

3+50

35

N	7.6	264.1
crk	7.6	
"	7.4	
M	8.6	263.1
"	8.7	
crk	8.9	
S	8.8	262.9

3+75

S	8.2	263.5
crk	7.5	
"	7.9	
M	8.2	263.5
"	7.2	
crk	7.2	
N	7.2	264.5



271.69

4+0

N	6.7	265.0
crb	7.0	
"A	7.0	
M	7.9	263.8
"A	7.2	
crb	7.1	
S	7.5	264.2

4725

S	6.5	265.2
crb	6.3	
"A	6.5	
M	6.8	264.9
"A	6.1	
crb	6.4	
N	6.3	265.4

271.69

4+50

386

N	5.7	266.8
crb	5.7	
"A	5.5	
M	6.2	265.5
"A	5.7	
crb	5.2	
S	5.6	266.1

4775

S	5.0	266.7
crb	4.8	
"A	5.4	
M	5.7	266.0
"A	5.1	
crb	5.2	
N	5.3	266.4



571.69

570

N	4.8	266.9
crk	4.7	
"A	4.3	
M	5.0	266.7
"A	4.8	
crk	4.3	
S	4.5	267.2

5725

S	4.3	267.4
crk	4.0	
"A	4.4	
M	4.7	267.0
"A	4.0	
crk	4.2	
N	4.2	267.5

3737

5750

N	4.0	267.7
crk	3.7	
"A	3.3	
M	3.9	267.8
"A	3.6	
crk	3.5	
S	3.8	267.9

5775

S	3.3	268.4
crk	3.0	
"A	3.0	
M	3.5	268.2
"A	3.2	
crk	3.5	
N	3.7	268.0



27169

6+0

N	3.5	268.2
Orb	3.3	
"A	3.2	
M	3.9	267.8
"A	3.1	
Orb	2.9	
S	3.1	268.6

6+25

S	3.0	268.7
Orb	3.0	
"A	3.0	
M	3.7	268.0
"A	3.3	
Orb	3.4	
N	3.5	268.2

6+50 = E.L. Trias st 50'

38  
38

N	3.6	268.1
Orb	3.6	
"A	3.6	
M	3.9	267.8
"A	3.7	
Orb	3.6	
S	3.3	268.4

E. CURV

S	3.5	268.2
Orb	3.6	
"A	3.5	
M	3.9	267.5
"A	4.0	
Orb	3.9	
N	3.8	267.9



271.69

E 14

N	4.1	267.6
crk	4.0	
1/4	3.9	
M	3.7	268.0
1/4	3.6	
crk	3.3	
S	3.5	268.2

Center

S	3.5	268.2
crk	3.6	
1/4	3.8	
M	4.0	267.8
1/4	4.0	
crk	3.9	
N	4.1	267.6

39 39

W 14

N	4.1	267.6
crk	4.3	
1/4	4.1	
M	4.0	267.7
1/4	3.7	
crk	3.8	
S	3.8	267.9

W. crk

S	3.6	268.1
crk	3.7	
1/4	4.0	
M	4.0	267.7
1/4	4.1	
crk	4.1	
N	3.9	267.8



271.69  
W.L. Trias

N	4.0	267.7
crb	4.1	
"A	4.2	
M	4.1	267.6
"A	4.2	
crb	3.9	
S	3.6	268.1

T.P. 3.52 271.48 3.73 267.96

2+25' W

S	3.8	267.7
crb	4.1	
"A	4.3	
M	4.2	267.3
"A	4.3	
crb	4.4	
N	4.3	267.2

271.48

0+50

40  
40

N	4.6	266.9
crb	4.6	
"A	4.4	
M	4.5	267.0
"A	4.5	
crb	4.3	
S	3.8	267.7

0+75

S	4.0	267.5
crb	4.4	
"A	4.7	
M	4.7	266.8
"A	4.7	
crb	4.6	
N	4.7	266.5



271.98

170

N	5.1	266.4
crk	5.0	
"A	5.0	
M	5.0	266.5
"A	5.1	
crk	4.9	
S	4.6	266.9

1725

S	5.3	266.2
crk	5.1	
"A	5.5	
M	5.4	266.1
"A	5.3	
crk	5.3	
N	5.5	266.0

1750

N	5.7	265.8
crk	5.5	
"A	5.5	
M	5.8	265.7
"A	5.9	
crk	5.5	
S	5.5	266.0

1775

S	6.0	265.5
crk	5.9	
"A	6.3	
M	6.3	265.7
"A	5.9	
crk	5.9	
N	6.2	265.3

41

41



271.48

270

N	6.8	264.7
crb	6.6	
"A	6.5	
M	7.0	264.5
"A	7.1	
crb	6.4	
S	6.6	264.9

272.5

S	7.6	263.9
crb	7.7	
"A	8.8	
M	7.6	263.9
"A	7.0	
crb	7.1	
N	7.5	264.0

4242

2750

N	8.5	263.0
crb	8.1	
"A	7.9	
M	8.4	263.1
"A	8.6	
crb	8.4	
S	8.3	263.2

277.5

S	9.2	262.3
crb	9.4	
"A	9.8	
M	9.4	262.1
"A	9.2	
crb	9.1	
N	9.4	262.1



471.45

310 = F.L. Ampudia st 50' wide

N	11.0	260.5
cor	10.7	260.8
"	10.6	260.9
M	10.5	261.0
"	10.7	260.8
cor	10.4	261.1
S	10.5	261.0

E. cor

S	11.4	260.1
cor	11.0	260.5
"	11.1	260.4
M	11.1	260.4
"	11.5	260.0
cor	11.5	259.7
N	12.2	259.3

471.5

F "4

43

N	12.3	259.2
cor	11.9	259.6
"	11.7	259.8
M	11.3	260.2
"	11.2	260.3
cor	11.1	260.4
S	11.5	260.0

Center

S	11.8	259.7
cor	12.0	259.5
"	11.9	259.6
M	12.1	259.4
"	12.6	258.9
cor	12.5	258.7
N	12.9	258.6



271.95

W 1/4

N		13.4	258.1	
crk		13.0	258.5	
"A		12.9	258.6	
M		12.6	258.9	
"A		12.4	259.1	
crk		12.2	259.3	
S		12.3	259.2	
T.P.	2.43	261.99	12.42	259.06 station

W. CURB

S		2.9	258.6	
crk		2.6	258.9	
"A		2.7	258.8	
M		3.4	258.1	
"A		4.0	257.5	
crk		4.0	257.5	
N		4.8	256.7	

261.5

W.L. Ampudia

44

44

N		5.8	255.9	
crk		5.1	256.4	
"A		4.7	256.8	
M		4.0	257.5	
"A		3.4	258.1	
crk		3.1	258.4	
S		3.1	258.4	

0+25' W

S		4.7	256.8	
crk		5.3		
"A		5.7		
M		6.2	255.3	
"A		6.6		
crk		6.8		
N		7.3	254.2	



261.49

0750

N	2.6	252.9
crb	7.9	
"A	7.7	
M	7.3	254.2
"A	6.9	
crb	6.8	
S	6.4	255.1

0775

S	7.8	253.7
crb	8.0	
"A	8.2	
crb	8.3	253.2
"A	8.6	
crb	8.7	
N	9.5	252.0

T.P.	2.44	254.21	2.72	251.77
------	------	--------	------	--------

254.21

170

45

N	2.9	251.3
crb	2.4	
"A	2.3	
M	2.0	252.2
"A	2.0	
crb	2.0	
S	1.7	252.5

1725

S	3.1	251.1
crb	3.3	
"A	3.4	
M	3.5	250.7
"A	3.8	
crb	4.0	
N	4.3	249.9



254.21

1+50

N	5.2	249.0
crk	5.1	
"A	4.9	
M	4.8	249.4
"A	4.5	
crk	4.3	
S	4.1	250.1

1+75

S	5.6	248.6
crk	5.7	
"A	5.7	
M	5.9	248.3
"A	5.9	
crk	5.9	
N	5.7	248.5

446

2+0

N	6.4	247.8
crk	6.4	
"A	6.4	
M	6.3	247.9
"A	6.3	
crk	6.3	
S	6.5	247.7

T.P. 2.51 249.96 6.76 247.25

2+25

S	2.8	247.2
crk	2.9	
"A	2.8	
M	2.8	247.2
"A	2.9	
crk	2.9	
N	3.0	247.0



249.96

2750

N

4.1

245.9

cub

4.0

1/4

3.9

M

3.8

246.2

1/4

3.7

cub

3.7

S

3.7

246.3

2775

S

4.8

245.2

cub

4.9

1/4

5.0

M

5.2

244.8

1/4

5.3

cub

5.4

N

5.5

244.6

3405 E.L. Arista St

4707

N

6.8

243.2

cub

6.8

1/4

6.7

M

6.6

243.4

1/4

6.4

cub

6.3

S

6.2

243.8



Section Anaxidia Cherry to Chestnut.  
 " 50' wide 5-1/2" 1/2  
10 Sample

Box, Anaxidia & Pine 266.29  
 S.M. 3.04 269.33  
 T.P. 2.79 259.77 + 12.35 256.98

S.L. Cherry St

W	17.3	244.5
Calc	15.3	244.6
"	14.6	245.2
M	12.6	247.2
"	11.0	248.8
Calc	10.2	249.5
E	8.8	251.0

0+75 S of Cherry

E	6.2	253.6
Calc	7.0	254.8
"	7.6	254.2
M	9.6	250.2
"	11.7	248.1
Calc	12.8	247.0
W	14.9	245.4

0+50

W	12.7	247.1
Calc	10.7	249.1
"	8.9	249.9
M	8.8	251.0
"	6.9	252.9
Calc	6.5	252.3
E	6.1	253.7

0+75

E	5.4	254.4
Calc	6.2	253.6
"	6.9	252.9
M	8.0	251.8
"	8.5	251.3
Calc	8.7	251.1
W	9.5	250.3



259.77

140

W	10.2	249.6
erb	9.0	250.8
1/4	8.4	251.4
M	7.2	252.6
1/4	5.5	256.3
erb	4.3	255.5
E	3.8	256.0

1425

F	3.0	256.8
erb	4.1	255.7
1/4	5.0	254.8
M	6.2	253.6
1/4	7.2	254.6
erb	7.6	254.4
W	7.8	252.0

1450

W	5.6	254.2
erb	5.4	254.4
1/4	4.7	255.1
M	3.8	256.0
1/4	2.3	257.5
erb	1.6	258.2
E	0.9	258.9

T.P. 11.88 268.86 2.79 256.98

1470

E	6.8	262.1
erb	7.9	261.0
1/4	8.6	260.3
M	9.5	259.1
1/4	10.9	258.0
erb	11.4	257.5
W	12.2	256.7

49  
49



268.86

2+0

W	8.8	260.1
Crk	7.4	261.5
"A	7.1	261.8
M	6.6	262.3
"A	5.7	263.2
Crk	5.2	263.7
E	4.4	264.5

2+25

E	3.5	265.4
Crk	3.8	265.1
"A	4.1	264.8
M	4.3	264.6
"A	5.0	263.9
Crk	5.4	263.5
W	6.1	262.8

268.86

2+50

50  
50

W	4.7	264.2
Crk	3.6	265.3
"A	3.2	265.7
M	2.9	266.0
"A	3.0	265.9
Crk	2.8	266.1
E	2.4	266.5

2+75

E	2.1	266.8
Crk	2.5	266.4
"A	2.8	266.1
M	3.2	265.7
"A	2.5	265.6
Crk	3.8	265.1
W	4.1	264.8



268.86

3+0 = N.1. Pine st 50'

W	2.8	2661
cul	3.1	265.8
"A	3.0	265.9
M	2.7	266.2
"A	2.6	266.3
cul	2.1	266.8
E	1.9	267.0

Note - for intersection see page 14

3.4 Pine st

E	1.5	267.4
cul	2.0	266.9
"A	2.4	266.5
M	2.7	266.2
"A	2.9	266.0
cul	2.9	266.0
W	3.0	265.9

268.86

0+255 of Pine

51

51

W	3.4	265.5
cul	3.2	265.7
"A	3.1	265.8
M	2.9	266.0
"A	2.9	266.0
cul	2.6	266.3
E	2.0	266.9

0+50

E	2.3	266.6
cul	2.8	266.1
"A	3.2	265.7
M	3.3	265.6
"A	3.4	265.5
cul	3.5	265.4
W	3.7	265.2



268.86

0+75

W	4.4	264.5
orb	3.9	265.0
"	3.7	265.0
M	3.8	265.1
"	3.8	265.1
orb	3.3	265.6
E	2.8	266.1

1+0

E	3.6	265.3
orb	4.0	264.9
"	4.1	264.8
M	4.5	264.4
"	4.5	264.1
orb	5.1	267.8
W	5.5	263.4

268.9

1+25

52

52

W	2.5	261.4
orb	6.9	267.0
"	6.8	267.1
M	6.0	262.9
"	5.1	267.8
orb	4.7	264.7
E	4.4	264.5

1+50

E	5.4	263.5		
orb	6.1	267.8		
"	6.5	267.6		
M	7.5	261.4		
"	8.0	260.9		
orb	8.3	260.6		
W	9.1	259.8		
T. A.	3.09	269.69	7.26	261.60



264.69

1+75

W	7.3	257.4
crk	6.9	258.7
"	5.8	258.9
M	5.1	259.6
"	3.6	261.1
crk	3.3	261.1
E	2.6	262.1

270

E	3.6	261.1
+9	3.5	261.7
crk	4.9	259.8
"	5.0	259.7
M	6.1	258.6
"	6.6	258.7
crk	7.1	257.6
W	8.1	256.6

264.7

2+25

W	9.1	255.6
crk	8.6	256.1
"	7.2	257.5
M	6.5	258.2
"	6.1	258.6
crk	5.7	259.0
+1	4.1	260.6
E	4.2	260.5

2+50

E	9.8	259.4
+9	5.2	259.6
crk	6.5	259.7
"	6.9	257.8
"	6.8	257.9
"	7.4	257.7
crk	8.9	255.8
W	10.0	254.7

53 55



266.69

Ampudia Pt.

2775

W	9.7	2550
Crk	26	256.1
"A	7.2	257.5
M	6.7	258.0
"A	6.0	258.7
Crk	6.0	258.7
E	5.0	259.7

Fort Stockton Drive  
3.102 N.L. Madrone St 50'

E	4.3	260.4
Crk	5.5	259.7
"A	5.7	259.0
M	6.2	258.5
"A	6.7	258.0
Crk	8.1	256.6
W	9.1	255.4

2667

Fort Stockton Drive  
5.1 Madrone St

54

54

W	6.4	258.3
Crk	5.9	258.8
"A	5.6	259.1
M	5.1	259.6
"A	4.7	260.0
Crk	4.5	260.2
E	3.8	260.9

0+25' 3

E	4.5	260.2
Crk	5.2	259.5
"A	5.5	259.7
M	5.7	259.0
"A	5.8	258.9
Crk	6.1	258.6
W	6.3	258.4



264.69

Ampudia St.

0750

W	2.5	257.2
Orb	7.4	257.3
"A	7.1	257.6
M	7.2	257.5
"A	6.8	257.9
Orb	6.6	258.1
E	5.7	259.0

0775

E	7.1	257.6
Orb	7.9	256.8
"A	8.1	256.6
M	8.5	256.2
"A	8.8	255.9
Orb	8.9	255.8
W	8.9	255.3

766.7

55

55

170

W	10.8	253.9
Orb	10.2	254.5
"A	9.8	254.9
M	9.7	255.0
"A	8.8	255.7
Orb	8.9	255.6
E	8.5	256.2

1725

E	8.6	256.1
Orb	9.2	255.5
"A	9.3	255.4
M	9.8	254.9
"A	10.4	254.3
Orb	10.9	253.8
W	11.5	253.2



264.69

Chempudia St

1750

W		12.1	252.6
orb		11.6	257.1
"A		10.8	257.9
M		10.5	254.2
"A		10.1	250.6
orb		10.0	250.7
E		9.1	255.6

1775

E		9.8	254.9
orb		10.1	250.6
"A		10.4	250.3
M		10.7	254.0
"A		11.3	257.6
orb		11.8	257.9
W		12.5	252.2
T.P.	3.55	257.30	10.9A 253.75

257.30

56

56

270

W		5.6	257.7
orb		5.0	257.3
"A		4.5	257.8
M		4.2	253.1
"A		3.7	257.6
orb		3.5	257.8
E		3.2	254.1

2725

E		3.7	253.6
orb		4.2	257.1
"A		4.1	257.2
M		4.8	259.5
"A		5.1	257.2
orb		5.5	251.8
W		6.0	251.3



257.30

Amputia St.

2+50

W	6.6	250.7
Crk	5.6	251.7
1/4	5.5	251.8
M	5.4	251.9
1/4	5.0	252.3
Crk	4.7	252.6
E	4.5	252.8

2+75

E	5.1	252.2
Crk	5.5	251.8
1/4	5.7	251.6
M	6.2	251.1
1/4	6.5	250.8
Crk	6.8	250.5
W	7.3	250.0

257.3

3+0 = N.L. Hickory 50'

57

57

W	7.8	249.5
Crk	7.2	250.1
1/4	6.8	250.5
M	7.0	250.3
1/4	6.4	250.9
Crk	6.2	251.1
E	5.8	251.5

T.P. 6.01 255.81 7.50 249.80

N Crk

E	4.4	251.4
Crk	4.8	251.0
1/4	4.9	250.9
M	5.5	250.3
1/4	5.2	250.0
Crk	6.1	249.7
W	6.4	249.4



255.81

Impudica St.

N 1/4

W	6.7	249.1
crk	6.2	249.6
1/4	5.9	249.9
M	5.6	250.2
1/4	5.0	250.8
crk	4.8	251.0
E	4.4	251.4

Center

E	4.5	251.3
crk	4.9	250.9
1/4	5.1	250.7
M	5.8	250.0
1/4	6.0	249.8
crk	6.1	249.7
W	6.7	249.1

255.8

58

S 1/4

W	7.0	248.8
crk	6.4	249.4
1/4	6.2	249.6
M	6.0	249.8
1/4	5.3	250.5
crk	5.0	250.8
F	4.8	251.0

S crk

E	4.7	251.1
crk	5.1	250.7
1/4	5.2	250.6
M	6.1	249.7
1/4	6.2	249.6
crk	6.4	249.4
W	6.9	248.9



255.81

Ampudia St.

S. L. Hickory

W	7.0	248.8
Crk	6.7	249.1
"	6.3	249.5
M	6.1	249.7
"	5.7	250.1
Crk	5.4	250.4
F	4.7	251.1

0+25 S of Hickory

F	4.8	251.0
Crk	5.5	250.3
"	5.7	250.1
M	6.3	249.5
"	6.4	249.4
Crk	6.6	249.2
W	7.1	248.7

255.81

59

59

0+50

W	7.1	248.7
Crk	6.5	249.3
"	6.3	249.5
M	6.0	249.8
"	5.9	250.4
Crk	5.2	250.6
F	4.6	251.2

0+75

F	4.2	251.6
Crk	5.0	250.3
"	4.9	250.9
M	5.4	250.4
"	5.6	250.2
Crk	5.6	250.2
W	6.3	249.5



255.81

Amputia 5T

170

W	5.6	250.2
crk	5.2	250.6
"	5.1	250.7
M	4.8	251.0
"	4.2	251.6
crk	4.1	251.7
E	3.7	252.1

1725

E	3.2	253.6
crk	3.6	252.2
"	3.7	252.1
M	4.2	251.6
"	4.4	251.4
crk	4.7	251.1
W	4.7	251.1

255.81

60

60

1750

W	4.6	251.2
crk	4.2	251.6
"	3.9	251.9
M	3.7	252.4
"	3.3	252.5
crk	3.2	252.6
E	3.0	252.8

1775

E	2.9	252.9
crk	3.2	252.6
"	3.3	252.5
M	3.7	252.1
"	3.9	251.9
crk	4.0	251.8
W	4.4	251.4



255.81

Ampudia St.

270

W	4.3	251.5
Crk	3.8	252.0
"A	3.6	252.2
M	3.7	252.1
"A	3.4	252.4
Crk	3.4	252.4
E	2.9	252.8

2725

E	3.3	252.5
Crk	3.4	252.4
"A	3.6	252.2
M	4.1	251.7
"A	4.1	251.7
Crk	4.4	251.4
W	4.9	250.9

A.36 256.45 3.72 252.09

256.45

61

2750

W	5.8	250.7
Crk	5.6	250.9
"A	5.1	251.4
M	5.4	251.1
"A	4.7	251.8
Crk	4.7	251.3
E	4.4	252.1

2775

F	5.1	251.4
Crk	5.5	251.0
"A	5.6	250.9
M	6.3	250.2
"A	6.3	250.2
Crk	6.4	250.1
W	7.0	249.5



356.45

Ampudia St.

310 = N.L. Chestnut

N	7.2	249.7
cut	7.5	249.0
"A	7.3	249.2
M	6.9	249.6
"A	6.2	250.3
cut	6.0	250.5
E	5.9	250.8

v-section Trias St Cherry to Chestnut.  
" " 50' wide 5' 145

6262

B.M. but N.E. Trias Binc

270.40

By sample  
15 thin  
10 Evans.

B.M. 3.70 274.10

S.L. Cherry St

N	10.4	263.7
cut	11.3	
"A	11.6	
M	12.0	264.1
"A	12.3	
cut	12.4	
E	12.8	261.3

2725.5

E	11.8	262.3
cut	11.3	
"A	11.3	
M	10.6	263.5
"A	10.9	
cut	10.0	
N	8.5	265.6



274.10

0750

W	9.0	265.1
crk	9.5	
"	9.6	
M	9.8	264.3
"	10.0	
crk	10.5	
E	10.9	263.2

0775

E	10.0	264.1
crk	9.5	
"	9.3	
M	8.8	265.3
"	8.7	
crk	8.3	
W	7.5	266.6

170

63

63

W	5.9	268.2
crk	7.6	
"	7.9	
M	8.0	266.1
"	8.3	
crk	8.5	
E	8.2	265.9

1725

E	7.2	266.9
crk	7.1	
"	7.3	
M	7.2	266.9
"	7.0	
crk	7.2	
W	6.2	267.9



274.10

1750

W 5.4 268.7

crk 6.2

" 6.2

M 6.2 267.9

" 6.5

crk 6.6

E 6.1 268.0

1775

E 5.4 268.7

crk 5.7

" 6.0

M 5.6 268.5

" 5.6

crk 5.7

W 5.3 268.8

210

64

W 4.3 269.8

crk 5.0

" 5.0

M 5.1 269.0

" 5.5

crk 5.1

E 4.9 269.2

2125

E 4.7 269.4

crk 4.9

" 5.1

M 4.8 269.3

" 4.6

crk 4.9

W 4.5 269.6



279.10

2750

W	4.2	269.9
erb	4.4	
"A	4.2	
M	4.3	269.8
"A	4.8	
erb	4.9	
E	4.1	270.0

2775

E	4.0	270.1
erb	4.1	
"A	4.4	
M	4.1	270.0
"A	3.9	
erb	3.9	
W	3.7	270.4

note for intersection see page 10

370 - N. Pine 50'

65

W		3.4	270.7
erb		3.5	
"A		3.6	
M		3.7	270.4
"A		4.1	
erb		3.8	
E		3.7	270.4
T.P.	3.39	273.74	3.70 270.40

S. Pine

F		3.2	270.5
erb		2.9	270.8
"A		3.4	270.3
M		3.6	270.1
"A		3.5	270.2
erb		3.1	270.6
W		3.2	270.5



273.74

0+25 S of Pine St

W	3.4	270.3
crk	3.4	270.3
"	3.2	270.0
M	3.6	270.1
"	3.3	270.4
crk	3.0	270.7
E	3.4	270.3

0+50

E	3.6	270.1
crk	3.5	270.2
"	3.4	270.3
M	3.8	269.9
"	3.3	270.4
crk	3.5	270.2
W	3.6	270.1

273.74

0+75

W	3.7	270.0
crk	3.7	270.0
"	3.8	269.9
M	4.2	269.5
"	4.1	269.6
crk	3.9	269.8
E	3.9	269.8

1+0

E	4.5	269.2
crk	4.3	269.4
"	4.4	269.3
M	4.6	269.1
"	3.9	269.8
crk	3.7	270.0
W	3.9	269.8

66



273.74

1725

W	4.2	269.5
Ork	4.3	269.4
"A	4.4	269.3
M	4.8	268.9
"A	4.6	269.1
Ork	4.6	269.1
E	4.8	268.9

1750

E	4.9	268.8
Ork	4.7	269.0
"A	4.7	269.0
M	4.9	268.8
"A	4.5	269.2
Ork	4.2	269.5
W	4.2	269.5

67

1775

W	4.6	269.1
Ork	4.5	269.2
"A	4.8	268.9
M	5.3	268.4
"A	5.0	268.7
Ork	5.1	268.6
E	4.9	268.8

210

E	5.3	268.4
Ork	5.4	268.3
"A	5.4	268.3
M	5.7	268.0
"A	5.1	268.5
Ork	5.0	268.7
W	5.1	268.6



54B 399 484



273.74

2725

W	5.4	268.3
Crk	5.3	268.4
"4	5.6	268.1
M	5.8	267.9
"4	5.5	268.2
Crk	5.5	268.2
E	5.4	268.3

2750

E	5.6	268.1
Crk	5.9	267.8
"4	5.8	267.9
M	6.1	267.6
"4	5.7	268.0
Crk	5.5	268.2
W	5.5	268.2

267.96

68

2775

W	5.7	267.8
Crk	5.8	267.9
"4	5.9	267.8
M	6.2	267.5
"4	5.9	267.8
Crk	6.0	267.7
E	5.9	267.8

Note: for intersection, see page 38  
(Ft. Stockton Dr)

3702 N. Madrona St 50' wide

E	5.8	267.9
Crk	5.8	267.9
"4	6.3	267.4
M	6.2	267.5
"4	6.2	267.5
Crk	6.0	267.7
W	6.1	267.6

T.P. 380 271.68 5.86 267.88



27168

S. W. Madrona

W	3.7	268.0
orb	3.7	268.0
"	3.8	267.9
M	3.5	268.2
"	3.5	268.2
orb	3.5	268.2
F	3.3	268.4

0+255

E	2.7	268.8
orb	3.3	268.6
"	3.3	268.4
M	3.7	268.0
"	3.9	267.8
orb	4.0	267.7
W	4.0	267.7

0+250

69

W	3.7	268.0
orb	3.9	267.8
"	3.9	267.8
M	3.6	268.1
"	3.2	268.5
orb	3.6	268.1
F	3.0	268.7

0+255

E	3.1	268.6
orb	3.4	268.3
"	3.4	268.3
M	3.7	268.0
"	3.9	267.8
orb	3.9	267.8
W	2.9	268.8



271.68

170

W	4.2	267.5
crk	4.3	267.4
"	4.2	267.5
M	3.9	267.8
"	3.5	268.2
crk	3.7	268.0
E	3.4	268.3

1725

E	3.7	268.0
crk	4.1	267.6
"	4.0	267.7
M	4.2	267.5
"	4.6	267.1
crk	4.8	266.9
W	4.3	267.4

1750

W	5.3	266.4
crk	5.2	266.5
"	5.0	266.7
M	4.7	267.0
"	4.5	267.2
crk	4.6	267.1
E	4.3	267.4

1775

E	4.8	266.9
crk	5.0	266.7
"	4.9	266.8
M	5.2	266.5
"	5.5	266.2
crk	5.8	265.9
W	5.6	266.1

70



271.68

270

W	6.0	265.7
crk	6.2	265.5
"A	6.0	265.7
M	5.8	265.9
"A	5.3	266.4
crk	5.6	266.1
E	5.3	266.4

2725

E	5.9	265.8
crk	6.1	265.6
"A	5.7	266.0
M	6.4	265.3
"A	6.7	265.0
crk	6.9	264.8
W	6.6	265.1

2750

71

W	7.2	264.5
crk	7.4	264.3
"A	7.1	264.6
M	6.8	264.9
"A	6.4	265.3
crk	6.9	264.8
E	6.6	265.1

2775

E	7.0	264.7
crk	7.3	264.4
"A	7.1	264.6
M	7.3	264.4
"A	7.8	263.9
crk	7.8	263.9
W	7.8	263.9



271.68

340 = N.L. Hickory 50' wide

W		8.2	263.5
orb		8.4	263.3
"A		8.3	263.4
M		7.7	263.8
"A		7.8	263.9
orb		7.8	263.9
E		7.5	264.2
T. P.	3.29	266.14	8.83 262.85

recorh

E		2.3	263.8
orb		2.6	263.5
"A		2.6	263.5
M		2.7	263.4
"A		2.9	263.2
orb		2.9	263.2
W		3.2	262.9

266.14

N "A

72

W		3.1	263.0
orb		3.0	263.1
"A		3.0	263.1
M		<del>2.8</del>	263.3
"A		2.6	263.5
orb		2.7	263.4
E		2.5	263.6

Center

E		2.8	263.3
orb		2.7	263.4
"A		2.8	263.3
M		3.1	263.0
"A		3.1	263.0
orb		3.1	263.0
W		3.2	262.9



266.14

5 1/4

W	3.3	262.8
code	3.3	262.8
1/4	3.2	262.9
M	3.2	262.9
1/4	2.9	263.2
code	3.0	263.1
E	3.0	263.1

S. cork

E	3.1	263.0
code	3.2	262.9
1/4	3.1	263.0
M	3.4	262.7
1/4	3.4	262.7
code	3.5	262.6
W	3.5	262.6

73

S. L. Hickory

W	3.6	262.5
code	3.6	262.5
1/4	3.7	262.4
M	3.6	262.5
1/4	3.6	262.5
code	3.3	262.8
E	3.5	262.6

0 + 25 5

E	3.7	262.2
code	3.6	262.5
1/4	3.9	262.2
M	4.4	261.7
1/4	4.2	261.9
code	4.0	262.1
W	4.0	262.1



266.14

0450

W	4.4	261.7
crk	4.4	261.7
"	5.0	261.1
M	4.8	261.3
"	4.6	261.5
crk	4.7	261.2
E	4.4	261.7

0475

E	4.7	261.4
crk	4.9	261.2
"	5.1	261.0
M	5.4	260.7
"	5.5	260.6
crk	5.1	261.0
W	5.1	261.0

74

170

W	5.7	260.4
crk	5.8	260.3
"	6.0	260.1
"	6.0	260.1
"	5.9	260.2
crk	5.8	260.8
E	5.5	260.6

1725

E	6.0	260.1
crk	6.2	259.9
"	6.5	259.6
M	6.5	259.6
"	6.2	259.3
crk	6.2	259.9
W	6.1	260.0
T.P.	3.14	263.06
	6.22	259.92



263.06

1750

W	3.6	259.5
crk	3.2	259.3
"A	4.2	258.9
M	4.0	259.1
"A	4.0	259.1
crk	3.6	259.5
E	3.6	259.5

1775

E	4.2	258.9
crk	4.3	258.8
"A	4.7	258.4
M	4.9	258.2
"A	4.9	258.2
crk	4.2	258.9
W	4.5	258.6

75

270

W	5.0	258.1
crk	4.9	258.2
"A	5.6	257.5
M	5.4	257.7
"A	5.4	257.7
crk	5.1	258.0
E	5.1	258.0

2725

F	5.8	257.3
crk	6.0	257.1
"A	6.4	256.7
M	6.1	257.0
"A	6.2	256.9
crk	5.9	257.2
W	5.4	257.7



263.06

2750

W	6.4	256.7
Crk	6.7	256.4
1/4	6.8	256.3
M	7.0	256.1
1/4	7.0	256.1
Crk	6.5	256.6
E	6.6	256.5

2775

E	7.2	255.9
Crk	7.4	255.7
1/4	7.6	255.5
M	7.8	255.3
1/4	7.7	255.4
Crk	7.1	256.0
W	7.2	255.9

76

370 - N.W. Chestnut St

W	7.8	255.3
Crk	7.8	255.2
1/4	8.4	254.7
M	8.2	254.9
1/4	7.8	255.3
Crk	7.9	255.2
E	7.7	255.4



11. 77



Published by H. S. CROCKER COMPANY, Stationers, Drawing  
Materials, Mathematical Instruments, etc., San Francisco.

TRAVERSE TABLE FOR TRANSIT BOOK.

From 1° to 90° for a distance of 100.

Degrees.	DEGREES.		¼ DEGREE.		½ DEGREE.		¾ DEGREE.		Degrees.
	Lat.	Dep.	Lat.	Dep.	Lat.	Dep.	Lat.	Dep.	
0			100.00	0.44	100.00	0.87	99.99	1.31	89
1	99.98	1.75	99.98	2.18	99.97	2.62	99.95	3.05	88
2	99.94	3.49	99.92	3.93	99.91	4.36	99.88	4.80	87
3	99.86	5.23	99.84	5.67	99.81	6.10	99.79	6.54	86
4	99.76	6.98	99.73	7.41	99.69	7.85	99.66	8.28	85
5	99.62	8.72	99.58	9.15	99.54	9.58	99.50	10.02	84
6	99.45	10.45	99.41	10.89	99.36	11.32	99.31	11.75	83
7	99.25	12.19	99.20	12.62	99.14	13.05	99.09	13.49	82
8	99.03	13.92	98.97	14.35	98.90	14.78	98.84	15.21	81
9	98.77	15.64	98.70	16.07	98.63	16.50	98.56	16.93	80
10	98.48	17.36	98.40	17.79	98.33	18.22	98.25	18.65	79
11	98.16	19.08	98.08	19.51	97.99	19.94	97.90	20.36	78
12	97.81	20.79	97.72	21.22	97.63	21.64	97.53	22.07	77
13	97.44	22.50	97.34	22.92	97.24	23.34	97.13	23.77	76
14	97.03	24.19	96.92	24.62	96.81	25.04	96.70	25.46	75
15	96.59	25.88	96.48	26.30	96.36	26.72	96.25	27.14	74
16	96.13	27.56	96.00	27.98	95.88	28.40	95.76	28.82	73
17	95.63	29.24	95.50	29.65	95.37	30.07	95.24	30.49	72
18	95.11	30.90	94.97	31.32	94.83	31.73	94.69	32.14	71
19	94.55	32.56	94.41	32.97	94.26	33.38	94.12	33.79	70
20	93.97	34.20	93.82	34.61	93.67	35.02	93.51	35.43	69
21	93.36	35.84	93.20	36.24	93.04	36.65	92.88	37.06	68
22	92.72	37.46	92.55	37.86	92.39	38.27	92.22	38.67	67
23	92.05	39.07	91.88	39.47	91.71	39.87	91.53	40.27	66
24	91.35	40.67	91.18	41.07	91.00	41.47	90.81	41.87	65
25	90.63	42.26	90.45	42.66	90.26	43.05	90.07	43.44	64
26	89.88	43.84	89.69	44.23	89.49	44.62	89.30	45.01	63
27	89.10	45.40	88.90	45.79	88.70	46.17	88.50	46.56	62
28	88.29	46.95	88.09	47.33	87.88	47.72	87.67	48.10	61
29	87.46	48.48	87.25	48.86	87.04	49.24	86.82	49.62	60
30	86.60	50.00	86.38	50.38	86.16	50.75	85.94	51.13	59
31	85.72	51.50	85.49	51.88	85.26	52.25	85.04	52.62	58
32	84.80	52.99	84.57	53.36	84.34	53.73	84.10	54.10	57
33	83.87	54.46	83.63	54.83	83.39	55.19	83.15	55.56	56
34	82.90	55.92	82.66	56.28	82.41	56.64	82.16	57.00	55
35	81.92	57.36	81.66	57.71	81.41	58.07	81.16	58.42	54
36	80.90	58.78	80.64	59.13	80.39	59.48	80.13	59.83	53
37	79.86	60.18	79.60	60.53	79.34	60.88	79.07	61.22	52
38	78.80	61.57	78.53	61.91	78.26	62.25	77.99	62.59	51
39	77.71	62.93	77.44	63.27	77.16	63.61	76.88	63.94	50
40	76.60	64.28	76.32	64.61	76.04	64.94	75.76	65.28	49
41	75.47	65.61	75.18	65.93	74.90	66.26	74.61	66.59	48
42	74.31	66.91	74.02	67.24	73.73	67.56	73.43	67.88	47
43	73.14	68.20	72.84	68.52	72.54	68.84	72.24	69.15	46
44	71.93	69.47	71.63	69.78	71.33	70.09	71.02	70.40	45
45	70.71	70.71							
Degrees.	Dep.	Lat.	Dep.	Lat.	Dep.	Lat.	Dep.	Lat.	Degrees.
Degrees.	DEGREES.		¼ DEGREE.		½ DEGREE.		¾ DEGREE.		Degrees.