

379

400

LEVEL

F.B. 379

Published by H. S. CROCKER COMPANY, Stationers, Drawing Materials, and Mathematical Instruments, San Francisco.

Table showing the difference of latitude and departure in running 80 chains at any course from 1 to 60 minutes.

MINUTES.	LKS.	MINUTES.	LKS.	MINUTES.	LKS.
1.....	2 $\frac{1}{2}$	21.....	49	41.....	95 $\frac{1}{2}$
2.....	4 $\frac{1}{2}$	22.....	51 $\frac{1}{2}$	42.....	98
3.....	7	23.....	53 $\frac{1}{2}$	43.....	100 $\frac{1}{2}$
4.....	9 $\frac{1}{2}$	24.....	56	44.....	102 $\frac{1}{2}$
5.....	11 $\frac{1}{2}$	25.....	58 $\frac{1}{2}$	45.....	105
6.....	14	26.....	60 $\frac{1}{2}$	46.....	107 $\frac{1}{2}$
7.....	16 $\frac{1}{2}$	27.....	63	47.....	109 $\frac{1}{2}$
8.....	18 $\frac{1}{2}$	28.....	65 $\frac{1}{2}$	48.....	112
9.....	21	29.....	67 $\frac{1}{2}$	49.....	114 $\frac{1}{2}$
10.....	23 $\frac{1}{2}$	30.....	70	50.....	116 $\frac{1}{2}$
11.....	25 $\frac{1}{2}$	31.....	72 $\frac{1}{2}$	51.....	119
12.....	28	32.....	74 $\frac{1}{2}$	52.....	121 $\frac{1}{2}$
13.....	30 $\frac{1}{2}$	33.....	77	53.....	123 $\frac{1}{2}$
14.....	32 $\frac{1}{2}$	34.....	79 $\frac{1}{2}$	54.....	126
15.....	35	35.....	81 $\frac{1}{2}$	55.....	128 $\frac{1}{2}$
16.....	37 $\frac{1}{2}$	36.....	84	56.....	130 $\frac{1}{2}$
17.....	39 $\frac{1}{2}$	37.....	86 $\frac{1}{2}$	57.....	133
18.....	42	38.....	88 $\frac{1}{2}$	58.....	135 $\frac{1}{2}$
19.....	44 $\frac{1}{2}$	39.....	91	59.....	137 $\frac{1}{2}$
20.....	46 $\frac{1}{2}$	40.....	93 $\frac{1}{2}$	60.....	140

TABLE FOR RUNNING ON SLOPES.

In the following table the first column shows the angle, the second the number of links to be added to a chain on the slopes, to make one chain, horizontal measurement.

ANGLE	COR. IN LINKS	ANGLE	COR. IN LINKS	ANGLE	COR. IN LINKS	ANGLE	COR. IN LINKS
°		°		°		°	
4	0.24	11	1.88	18	5.14	25	10.54
5	0.38	12	2.24	19	5.76	26	11.26
6	0.55	13	2.63	20	6.42	27	12.24
7	0.76	14	3.06	21	7.11	28	13.37
8	0.98	15	3.53	22	7.85	29	14.34
9	1.24	16	4.02	23	8.64	30	15.47
10	1.55	17	4.56	24	9.47	35	22.07



LEVEL BOOK

No. 400

379



MANUFACTURED BY

A. S. Crocker & Co.

SAN FRANCISCO

and

SACRAMENTO

FROM
Loring's Book Store

Index

X-section Grape st Fern to 32nd Page 2
" " Spruce " Brant " Dove " 18
" " 31st " Beech to Grape " 24
" " 17th st " C" to Park Line 46

Levels for Top of Slope Hunter & Hawk.

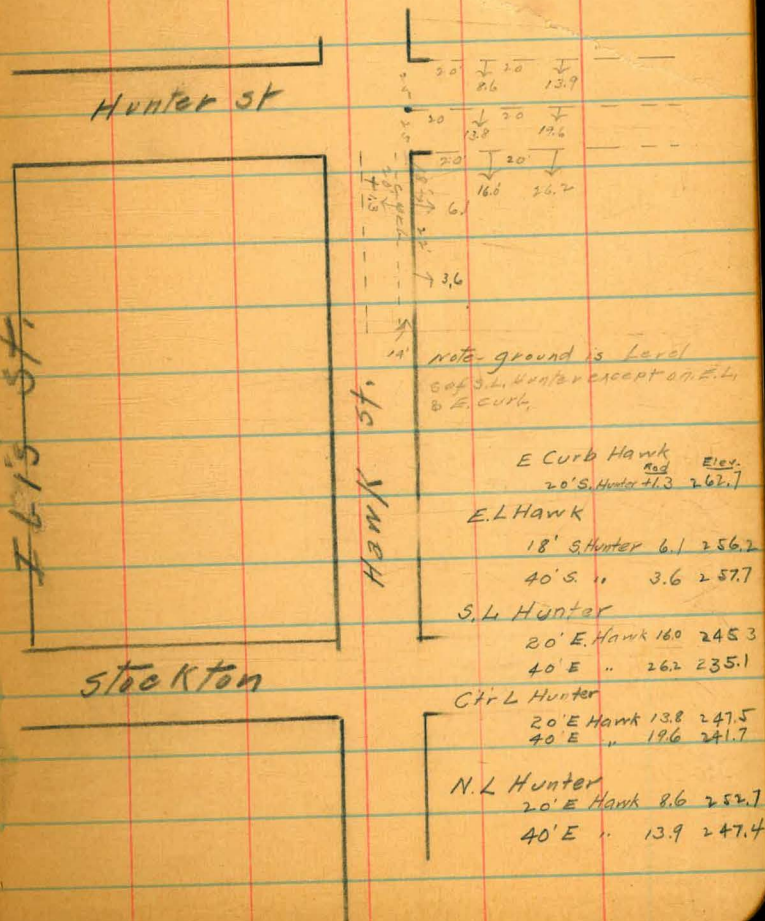
1/14/10

Shuttle
Shaw

B.M. 1st S.E. cor Hawk & Hunter 253.40

Evans

B.M. 7.90 261.30



Section Grade from E.L. Fern on N to 3200 1/4
 " 75' Fern to 3120 1/4 1/4
 " 5' 14' 280.10
 Dunkle
 Shaw
 Evans

B.M. S.E. 30' 28' Hawthorn
 A.M. 2.59 272.69
 T.P. 3.48 276.71 7.96 273.23

E.L. Fern on N

N	2.7	274.0
crk	3.4	273.3
1/4	3.6	273.1
M	3.4	273.3
1/4	4.2	272.5
crk	3.8	272.9
S	3.6	273.1

P-125 E

S	4.1	272.3
crk	4.7	272.0
1/4	4.3	272.4
M	4.2	272.5
1/4	3.4	273.3
crk	3.3	273.4
N	4.1	272.6

0497 = W.L. Fern on S. 60'

N	4.4	272.3
crk	3.4	273.3
1/4	3.7	273.0
M	4.5	272.2
1/4	5.7	271.0
crk	5.3	271.4
S	5.9	270.8
w. cork		
S	6.1	270.6
crk	6.5	270.2
1/4	6.6	270.1
M	5.5	271.2
1/4	4.7	272.0
crk	4.0	272.7
N	5.0	271.7

1-section Grape from E.L. Farnon N to 32nd

14 Dunkle

276.71

N 1/4

N	5.2	271.5
cut	4.7	272.0
1/4	4.8	271.9
N	5.9	270.8
1/4	6.9	270.3
cut	6.7	270.9
S	6.9	269.8

center

S	6.9	269.8
cut	6.6	270.1
1/4	6.6	270.7
N	6.2	270.5
1/4	5.6	271.1
cut	5.3	271.4
N	5.0	271.7

276.71

E 1/4

N	5.1	271.6
cut	5.6	271.1
1/4	5.7	271.0
N	6.9	270.3
1/4	6.6	270.4
cut	6.8	269.9
S	6.7	270.0

E cut

S	7.0	269.7
cut	7.1	269.6
1/4	7.0	269.7
N	6.5	270.2
1/4	5.7	270.8
cut	5.9	270.8
N	5.4	271.3

53

276.71

E. Fern

N	6.0	270.7
crk	6.3	270.4
1/4	6.4	270.3
M	6.7	270.0
1/4	7.2	269.5
crk	7.3	269.4
S	7.2	269.5

275 F

S	7.3	269.4
crk	7.5	269.2
1/4	7.4	269.3
M	7.0	269.7
1/4	6.6	270.1
crk	6.5	270.2
N	6.3	270.4

0750

4

N	6.3	270.4
crk	6.6	270.1
1/4	6.6	270.1
M	7.1	269.6
1/4	7.4	269.3
crk	7.5	269.2
S	7.5	269.2

0775

S	7.5	269.2
crk	7.7	268.8
1/4	7.8	268.9
M	7.3	269.4
1/4	7.0	269.7
crk	6.9	269.8
N	6.6	270.1

276.71

170

N	7.3	269.4
Crk	7.6	268.1
"A	7.7	269.0
M	8.2	268.5
"A	8.9	268.3
Crk	8.9	268.3
S	8.0	268.7

1725

S	9.1	267.6
Crk	9.1	262.6
"A	9.1	262.6
M	8.6	268.1
"A	8.0	268.7
Crk	8.2	267.5
N	8.0	268.7

1750

66. 5

N	10.6	266.1
Crk	10.5	266.2
"A	10.6	266.1
M	10.0	266.7
"A	10.0	266.7
Crk	10.9	266.3
S	10.7	266.0
T.P.	122	265.97
	12.46	269.25

1775

S	2.6	262.9
Crk	2.3	263.2
"A	2.0	263.5
M	2.2	263.3
"A	2.1	263.4
Crk	2.7	262.8
N	3.6	261.9

		265.47		
		240		
N			9.4	256.1
Crk			8.6	256.9
"A			8.3	257.2
M			6.2	259.3
"A			6.8	258.7
Crk			6.3	259.2
S			6.9	258.6
T.P.	1.29	254.43	12.33	253.14
		2425		
S			2.3	252.1
Crk			3.3	251.1
"A			5.0	249.4
M			3.9	250.5
"A			5.5	248.9
Crk			5.9	248.5
N			7.3	247.1
T.P.	0.91	242.47	12.35	241.58

		242.49		
		2450		6
N			6.1	236.4
Crk			5.3	239.2
"A			5.1	237.4
M			4.5	238.0
"A			6.4	236.1
Crk			6.6	235.9
S			6.6	235.9
		2475		
S			15.5	227.0
Crk			14.6	227.9
"A			14.7	227.7
M			13.1	229.4
"A			12.7	229.8
Crk			12.7	229.8
N			11.8	230.7

note - Levels for top of Slope would run on uniform grade with x-sections. 242.49
340

N			8.4	234.1
cut.			9.5	233.0
"			10.0	232.5
M			11.1	231.4
"			11.6	230.9
cut			11.6	230.9
S			12.2	230.3
T.P.	12.83	254.30	11.2	241.37
		342.5		
S			12.5	241.7
cut			12.1	242.1
"			12.3	241.9
M			10.6	243.6
"			10.3	243.9
cut			9.9	244.3
N			7.9	246.3
T.P.	12.94	266.52	0.02	254.13

266.52

3450

N			8.8	257.7
cut			10.8	255.7
"			11.2	255.3
M			12.5	254.0
"			12.8	253.7
cut			12.7	253.8
S			13.4	253.1
S			3.7	262.8
cut			2.6	263.9
"			3.1	263.4
M			2.7	263.6
"			1.6	264.9
cut			1.3	265.2
N			0.4	266.1
T.P.	2.24	275.07	0.69	265.83

275.07

4+0

✓	6.2	268.9
crb	6.5	268.6
"A	6.8	268.3
M	6.3	268.8
"A	6.4	268.7
crb	6.6	268.5
S	7.5	267.6

4+25-

S	6.2	268.9
crb	6.2	268.9
"A	6.1	269.0
M	5.7	269.4
"A	5.1	270.0
crb	5.0	270.1
✓	4.5	270.6

275.07

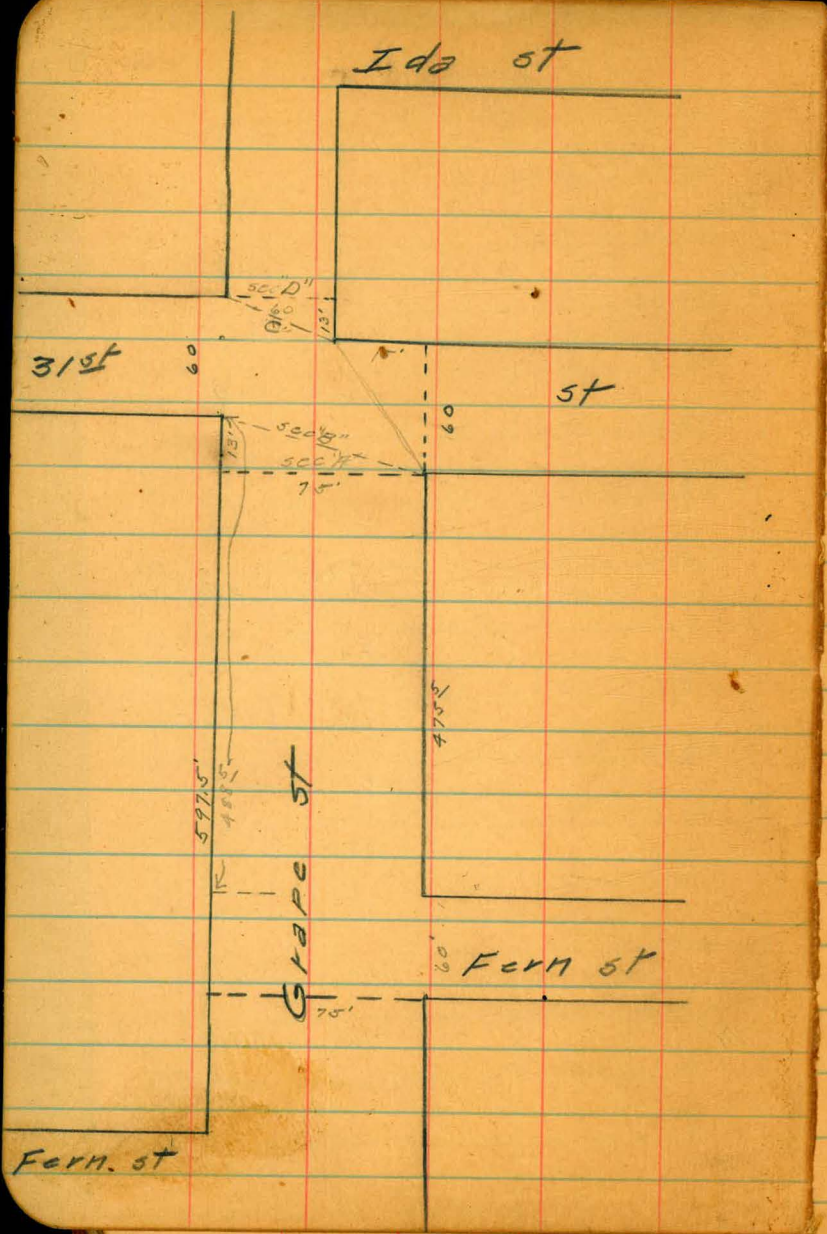
4+50

8

✓	9.0	271.1
crb	4.3	270.8
"A	4.4	270.7
M	4.8	270.3
"A	5.2	269.9
crb	5.2	269.9
S	5.5	269.6

4+75.5 - N. L. 31/8⁺ 07.5 = sec "A"

S	5.4	269.7
crb	4.8	270.3
"A	4.8	270.3
M	4.5	270.6
"A	4.0	271.1
crb	4.0	271.1
✓	3.6	271.5



275.07

4475⁵ 09 5.8 4475⁵ 09 4.8 1st = 500 5"

9

N	3.5	271.6
Corb	3.5	271.6
1/4	3.8	271.3
N	4.4	270.7
1/4	4.9	270.2
Corb	4.9	270.2
S	5.4	269.7

W. Corb

S	5.3	269.8
Corb	5.0	270.1
1/4	4.8	270.3
N	4.3	270.8
1/4	3.8	271.3
Corb	3.6	271.5
N	3.4	271.7

275.07

W 1/4

N	3.4	271.7
crk	3.6	271.5
1/4	3.7	271.4
M	4.3	270.8
1/4	4.9	270.2
crk	5.0	270.1
S	5.3	269.8

Center

S	5.2	269.9
crk	4.8	270.3
1/4	4.7	270.4
M	4.2	270.9
1/4	3.7	271.4
crk	3.6	271.5
N	3.4	271.7

275.07

E 1/4

10

N	3.3	271.8
crk	3.6	271.5
1/4	3.7	271.4
M	4.3	270.8
1/4	4.9	270.2
crk	5.0	270.1
S	5.1	270.0

E. crk

S	5.3	269.8
crk	4.8	270.3
1/4	5.0	270.1
M	4.3	270.8
1/4	3.7	271.4
crk	3.5	271.6
N	3.2	271.9

275.07

EL. = SEC "C"

N	3.5	271.6
crk	3.6	271.5
"A	3.8	271.3
M	4.4	270.7
"A	4.8	270.3
crk	4.9	270.2
S	5.2	269.9

SEC "D" = EL. 315° 11' N

S	5.2	269.9
crk	4.8	270.3
"A	4.8	270.3
M	4.3	270.8
"A	3.8	271.3
crk	3.6	271.5
N	3.5	271.6

0+25' E

11

N	3.5	272.0
crk	3.3	271.8
"A	3.6	271.5
M	4.3	270.8
"A	4.9	270.2
crk	5.2	269.9
S	5.3	269.8

0+50'

S	4.8	270.3
crk	4.2	270.9
"A	4.2	270.9
M	3.7	271.4
"A	3.9	271.7
crk	3.3	271.8
N	3.0	272.1

275.07

0+25

N	2.0	273.1
Colt	2.3	272.8
1/4	2.7	272.4
M	3.6	271.5
1/4	4.1	271.0
Colt	4.3	270.8
S	4.8	270.3

1+0

S	4.2	270.9
Colt	3.9	271.2
1/4	3.6	271.5
M	2.8	272.3
1/4	2.5	272.6
Colt	2.1	273.0
N	1.8	273.3

1+25

12

N	1.0	274.1
Colt	1.5	273.6
1/4	1.8	273.3
M	2.4	272.7
1/4	3.1	272.0
Colt	3.4	271.7
S	3.7	271.4

1+50

S	3.2	271.9
Colt	2.8	272.3
1/4	2.5	272.6
M	1.7	273.4
1/4	1.0	274.1
Colt	0.7	274.4
N	0.6	274.5
T.P.	8.12	282.67
	0.52	274.55

282.67

1+75

✓	7.6	275.1
crk	8.0	274.7
"A	8.2	274.5
M	8.7	276.0
"A	8.9	273.3
crk	9.6	273.1
S	10.0	272.7

2+0

S	9.0	273.7
crk	9.0	273.7
"A	8.8	273.9
M	8.3	274.4
"A	7.7	275.0
crk	7.1	273.6
N	6.8	275.9

2+27 E of sec "D" = v.l. Ida st 60'

13

N	6.7	276.0
crk	7.0	275.7
"A	7.4	274.3
M	7.5	275.2
"A	8.1	274.6
crk	8.1	274.6
S	8.6	274.1

McCurle

S	8.2	274.5
crk	8.0	274.7
"A	7.7	275.0
M	7.2	275.5
"A	7.0	275.7
crk	6.9	275.8
N	6.4	276.3

382.67

N^{1/4}

N	6.5	276.2
Crk	6.6	276.1
"A	6.9	275.8
M	7.0	275.7
"A	7.6	275.1
Crk	7.7	275.0
S	8.0	274.7

Center

S	7.3	275.4
Crk	7.2	275.5
"A	7.0	275.7
M	6.3	276.4
"A	6.5	276.2
Crk	6.1	276.6
N	5.7	277.0

E^{1/4}

14

N	5.3	277.4
Crk	6.0	276.7
"A	6.3	276.4
M	6.3	276.4
"A	6.9	275.8
Crk	7.1	275.6
S	7.3	275.4

E Curle

S	6.8	275.9
Crk	6.9	275.9
"A	6.9	275.8
M	6.2	276.5
"A	6.1	276.6
Crk	5.8	276.9
N	5.2	277.5

282.67

E. L. Ida

N	5.4	277.3
Crk	5.9	277.3
"A	5.7	277.4
M	6.0	276.7
"A	6.8	276.9
Crk	6.3	276.4
S	6.5	276.2

0+75 E

S	6.1	276.6
Crk	6.0	276.7
"A	6.0	276.7
M	5.6	277.1
"A	5.6	277.2
Crk	5.3	277.4
N	5.2	277.5

282.67

0+50

15

N	4.7	278.0
Crk	4.9	277.8
"A	5.3	277.4
M	5.2	277.5
"A	5.7	277.0
Crk	1 5.6	277.1
S	5.7	277.0

0+75

S	5.7	277.0
Crk	5.3	277.4
"A	5.6	277.1
M	5.1	277.6
"A	5.1	277.6
Crk	4.8	277.9
N	4.4	278.3

282.67

1+0

N	4.3	278.4
crk	4.3	278.4
1/4	4.6	278.1
M	4.7	278.0
1/4	5.4	278.3
crk	5.4	278.3
S	5.7	277.0

1+25

S	5.2	277.5
crk	5.0	277.7
1/4	5.0	277.7
M	4.5	278.2
1/4	4.5	278.2
crk	4.3	278.4
N	4.2	278.5

1+50

16

N	3.9	278.8
crk	3.9	278.8
1/4	4.0	278.7
M	4.1	278.6
1/4	4.6	278.1
crk	4.7	278.0
S	4.7	278.0

1+75

S	4.3	278.4
crk	4.3	278.4
1/4	4.1	278.6
M	3.6	279.1
1/4	3.6	279.1
crk	3.5	279.2
N	3.3	279.4

282.67

270

N	2.7	280.0
Crk	2.8	279.9
1/4	3.1	279.6
M	3.1	279.6
1/4	3.7	279.0
Crk	3.7	279.0
S	3.6	279.1

272.5

S	3.5	279.2
Crk	3.4	279.3
1/4	3.4	279.3
M	3.0	279.7
1/4	3.0	279.7
Crk	2.8	279.9
N	2.7	280.0

276.5 = W.L. 32nd St

17

N	2.6	280.1
Crk	2.8	279.9
1/4	2.9	279.8
M	2.8	279.9
1/4	3.3	279.4
Crk	3.3	279.4
S	3.3	279.4

x-section Spruce 5' from W.L. Brant to EL. Dove
 " " 80' wide 13' 1/4'S

B.M. Glass 1st Walnut, 250.90

2-28-11

Brant
 Brant
 Brant

B.M.	0.70	251.60		
T.P.	4.37	248.57	7.42	244.18
T.P.	11.2	237.01	12.68	235.89

W.L. Brant

N		9.5		227.5
crk		11.1		225.9
1/4		11.3		225.7
M		11.6		225.4
1/4		11.7		225.3
crk		11.5		225.5
S		11.0		226.0

0+25 W

S		8.3		228.7
crk		9.0		228.0
1/4		9.8		227.2
M		10.4		226.6
1/4		10.1		226.9
crk		9.0		228.0
N		6.8		230.2

227.01

0+50

18

N			3.1	233.9
crk			4.8	232.2
1/4			5.4	231.6
M			5.7	231.3
1/4			5.9	231.1
crk			6.2	230.8
S			5.8	231.2
T.P.	9.24	241.61	4.64	232.37

0+75

S			9.1	232.5
crk			9.0	232.6
1/4			8.3	233.3
+2			7.8	233.8
+6			5.6	236.0
M			5.5	236.1
1/4			6.0	235.6
crk			6.1	235.5
+7			4.5	237.1
N			4.6	237.0

241.61

1+0

N	2.1	239.5
Crk	2.9	238.7
"4	3.1	238.5
M	2.7	238.9
+8	2.9	238.7
"4	7.2	234.4
Crk	8.6	233.0
S	8.1	233.5

1+25

S	8.9	232.7
Crk	9.2	232.4
"4	8.1	233.5
+3	4.6	237.0
M	3.4	238.2
"4	2.4	239.2
Crk	1.5	240.1
N	0.9	240.7

241.60

1+50

19

N	2.6	239.0
Crk	4.7	236.9
"4	5.7	235.9
M	7.2	234.4
+10	7.5	234.1
"4	9.7	231.9
Crk	10.8	230.8
S	10.5	231.1

1+75

S	13.2	228.4
Crk	13.1	228.5
"4	11.3	230.3
M	10.6	231.0
"4	10.1	231.5
Crk	8.5	233.1
N	6.9	234.7
T.P	0.87	230.64
	11.84	229.77

230.64

2+0 = F.L. Curlew ST 80'

N	0.6	230.0
crk	2.3	228.3
"A	3.4	227.2
M	4.4	226.2
"A	5.3	225.3
crk	5.7	224.9
S	6.8	223.8

E. crk

S	8.4	222.2
crk	7.2	223.4
"A	7.9	222.7
M	7.1	223.5
"A	6.2	224.4
crk	5.4	225.2
N	3.6	227.0

E "A

230.64

20

N	6.3	224.3
crk	8.4	222.2
"A	9.2	221.4
M	10.2	220.4
"A	11.4	219.2
crk	11.8	218.8
S	13.9	216.7

Center

S	18.8	211.8
crk	16.7	213.9
"A	15.0	215.6
M	12.6	218.0
"A	11.9	218.7
crk	11.2	219.4
N	9.3	221.3
T.P.	0.27	218.25 ✓ 12.86 217.78 ✓

218.25

N 1/4

N	0.5	217.8
crk	2.0	216.3
1/4	3.1	215.2
M	4.6	213.7
1/4	6.2	212.1
crk	7.5	210.8
S	9.1	209.2

N. curb

S	11.2	207.1
crk	10.5	207.8
1/4	9.5	208.8
M	7.5	210.8
1/4	6.0	212.3
crk	4.5	213.8
N	3.1	215.2

218.25

W. L. Curlew

21

N	5.2	213.0
crk	7.4	210.8
1/4	8.5	209.7
M	10.2	208.0
1/4	12.4	205.8
crk	13.5	204.7
S	15.1	203.1
+30	19.7	198.5

0+25 W

-30	25.3	192.9
S	21.0	197.2
crk	19.1	199.1
1/4	17.0	201.2
M	15.0	203.2
1/4	13.2	205.0
+4	11.8	206.4
crk	11.9	206.3
N	9.6	208.6
T.P.	0.2A	206.05
	12.44	205.81

206.05

0+50

N	0.0	206.0
crk	2.9	203.1
+ 8	2.5	203.5
1/4	5.0	201.0
M	7.2	198.3
1/4	9.3	196.7
crk	11.3	194.7
S	13.7	192.3
+ 20	17.3	189.7
1	0+75	
- 30	19.7	186.3
S	15.3	190.7
crk	13.2	192.8
1/4	11.0	195.0
M	8.9	197.1
1/4	7.0	199.0
+ 4	5.0	201.0
crk	4.9	201.1
N	1.8	204.2

206.05

1+0

22

N	3.4	202.6
+ 9	5.2	200.8
+ 11	6.5	199.5
crk	6.5	199.5
1/4	7.3	198.7
M	8.6	197.4
1/4	10.9	195.1
crk	13.2	192.8
S	15.6	190.4
+ 30	19.8	186.2
1	1+25	
+ 20	19.4	186.6
S	15.2	190.8
crk	12.9	193.1
1/4	11.2	194.8
M	10.0	196.0
1/4	9.1	197.0
crk	8.3	197.7
+ 4	8.2	197.8
+ 6	7.2	198.8
N	6.5	199.5
T.P.	1.30	197.37
	7.78	196.07

197.37

1750

N	0.9	196.5
+ 3	1.4	196.0
+ 10	2.8	194.6
Crk	2.6	194.8
"4	3.4	194.0
+ 5	3.5	193.9
+ 6	2.3	195.1

M	3.0	196.4
---	-----	-------

"4	3.7	193.7
----	-----	-------

Crk	5.4	192.0
-----	-----	-------

5	6.9	190.5
---	-----	-------

+ 30	10.9	186.5
------	------	-------

1775

- 30	11.9	185.3
------	------	-------

5	9.0	188.4
---	-----	-------

Crk	7.8	189.6
-----	-----	-------

"4	6.8	190.6
----	-----	-------

M	6.3	191.1
---	-----	-------

"4	6.3	191.1
----	-----	-------

Crk	6.3	191.1
-----	-----	-------

+ 5	6.2	191.2
-----	-----	-------

+ 6	4.8	192.6
-----	-----	-------

N	4.4	193.0
---	-----	-------

210 = E.L. Dove

23

N	8.3	189.1
---	-----	-------

+ 2	8.3	189.1
-----	-----	-------

+ 3	10.3	187.1
-----	------	-------

Crk	10.1	187.3
-----	------	-------

"4	10.0	187.4
----	------	-------

M	10.0	187.4
---	------	-------

"4	11.0	186.4
----	------	-------

Crk	11.4	186.0
-----	------	-------

5	12.0	185.4
---	------	-------

+ 30	14.6	182.8
------	------	-------

X-section 31st St Beech to Cedar
 13' 1/2" for 80' & 10' 1/2" for 60'
 for street width see sketch Page 20
 10' 1/2" S.W. Cor. Fern & Beech

3/4
 232.57

Runwell
 Shaw
 McKinnon

233.47

0+50

24

B.M.	8.07	240.64			W	3.7	229.6
T.P.	2.54	233.27	9.91	230.73	crk	6.5	226.8
		W. Beech			"A	8.7	224.6
W			2.5	230.8	M	12.2	221.1
crk			1.3	229.0	"A		
"A			6.2	227.1	"A	16.1	217.2
M					+11	24.1	209.2
"A			7.3	226.0	crk	22.2	211.1
crk					E	16.9	216.4
F			7.8	225.5	+30	14.3	219.0
			7.4	225.9			
			6.2	227.1			

0+25 N of Beech

0+75

E			10.7	222.6	-30	23.0	210.3
crk					E	26.8	206.5
"A			11.6	221.7	+2	27.3	216.0
M					+7	32.9	200.4
"A			11.0	222.3	crk	26.7	206.6
M			9.5	223.8	"A	20.3	213.0
"A					"A	13.9	219.4
crk			7.1	226.2	"A	10.1	223.2
W					crk	7.0	226.3
			5.3	228.0	W	4.1	229.2
			3.0	230.3			

233.27

1+0

W	4.6	228.7
crk	7.6	225.5
1/4	11.5	221.8
M	15.0	218.3
1/4	18.8	214.5
+ 8	20.5	212.8
crk	24.0	209.3
E	32.3	201.0
+ 7	39.2	194.1
+ 30	32.9	200.4

1+25

- 50	40.1	
- 33	45.6	
E	28.1	205.2
crk	22.0	211.3
1/4	18.1	215.2
M	15.1	218.2
1/4	11.4	221.9
crk	8.0	225.3
W	4.5	228.8

1+50

25

W	4.1	229.2
crk	7.5	225.8
1/4	11.4	221.9
M	13.3	220.0
1/4	18.9	214.4
crk	22.2	211.1
E	26.2	207.1
+ 25	33.5	199.8
+ 55	43.9	184.4

1+75

- 40	37.0	
E	26.6	206.7
crk	22.1	211.2
1/4	18.1	215.2
M	14.1	219.2
1/4	10.6	222.7
crk	7.4	225.9
W	3.5	229.8

	233.27		
	270		
W	3.1	230.2	
erb	6.6	226.7	
1/4	10.3	223.0	
M	14.1	219.2	
1/4	17.1	216.2	
erb	21.5	211.8	
E	26.0	207.3	
+40	37.1	196.2	

	2725		
-40	38.1	2	
E	26.5	206.8	
erb	26.8	211.5	
1/4	17.4	215.9	
M	14.2	219.1	
1/4	11.1	222.2	
erb	7.3	226.0	
W	3.9	229.4	

	2450		
W	5.5	227.8	
erb	9.0	224.3	
1/4	12.2	221.1	
M	15.5	217.8	
1/4	19.2	214.1	
erb	23.4	209.9	
E	27.8	205.5	
+40	37.7	193.6	

	2775		
-30	43.0	190.3	
-15	34.3	199.0	
E	27.8	203.5	
erb	25.2	208.1	
1/4	21.2	212.1	
M	17.4	215.9	
1/4	14.4	218.9	
erb	10.5	222.8	
W	7.7	225.6	
T.A	0.37	222.82	10.52 222.40

2.22.82

3+0 = S.L. Cedar 80'

W	0.4	222.4
erb	3.7	219.1
"	6.6	216.2
M	10.0	212.8
"	14.3	208.5
erb	17.6	205.2
E	23.3	199.5

for +8 - readings for intersection see intersection of Cedar

S. corh

E	25.8	197.0
erb	18.4	200.4
"	15.3	207.5
M	11.8	211.0
"	8.0	214.8
erb	5.6	217.2
W	2.5	220.3

5 1/4

27

W	3.9	218.9
erb	6.2	216.6
"	9.3	213.5
M	13.1	209.7
"	16.0	206.8
erb	18.6	204.2
E	26.3	196.5

Center

E	28.2	194.6
erb	19.2	203.6
"	17.8	205.0
M	15.2	209.6
"	11.0	211.8
erb	8.0	214.8
W	4.8	218.0

227.82

N⁴

N	6.3	216.5
crk	9.8	213.0
"4	13.2	209.6
M	16.4	206.4
"4	19.9	202.9
crk	22.2	200.6
E	26.2	196.6

N curb

E	26.8	196.0 [✓]
crk	29.5	198.3 [✓]
"4	21.2	201.6 [✓]
M	18.3	204.5 [✓]
"4	15.6	207.4 [✓]
crk	11.9	210.9 [✓]
N	7.7	215.1 [✓]

N.L. Cedar

28

N	2.6	214.0 [✓]
crk	12.8	210.0 [✓]
"4	16.5	206.3 [✓]
M	19.3	203.5 [✓]
"4	22.5	200.3 [✓]
crk	26.3	196.5 [✓]
E	31.9	190.9 [✓]
		214.08 [✓]
T.P	0.22	214.30 [✓] 374

0+25 N of Cedar

30	30.5	183.8 [✓]
E	22.1	192.2 [✓]
crk	18.2	196.1 [✓]
"4	14.9	199.4 [✓]
M	12.2	202.1 [✓]
"4	9.5	204.8 [✓]
crk	5.8	208.5 [✓]
N	1.6	212.7 [✓]

214.30

0+50

W	3.6	210.7 ✓
crk	2.4	206.9 ✓
"A	10.7	203.6 ✓
M	13.2	201.1 ✓
"A	15.8	198.5 ✓
crk	19.0	195.3 ✓
E	22.6	191.7 ✓
+30	38.0	176.3 ✓

0+75

-30	40.2	174.1 ✓
E	22.7	191.6 ✓
crk	20.1	194.2 ✓
"A	17.3	197.0 ✓
M	14.0	200.3 ✓
"A	11.5	202.8 ✓
crk	9.1	205.2 ✓
W	5.7	208.6 ✓

1+0

29

W	7.2	207.1 ✓
crk	10.3	204.0 ✓
"A	12.6	201.7 ✓
M	15.8	198.5 ✓
"A	19.2	195.1 ✓
crk	22.1	192.2 ✓
E	26.0	188.3 ✓
+30	37.8	175.5 ✓

1+25

-30	39.1	175.2 ✓
E	28.3	186.0 ✓
crk	23.0	191.3 ✓
"A	20.1	194.2 ✓
M	16.9	197.4 ✓
"A	14.5	199.8 ✓
crk	11.2	203.1 ✓
W	7.7	206.6 ✓

229.20

1750

n	8.4	205.9	✓
crb	12.5	201.8	✓
1/4	15.9	198.4	✓
M	19.1	195.2	✓
1/4	22.5	191.8	✓
crb	27.9	186.4	✓
E	34.8	179.5	✓
+10	37.9	176.4	
+30	40.2	174.1	✓

1+81³ = x-section "H"

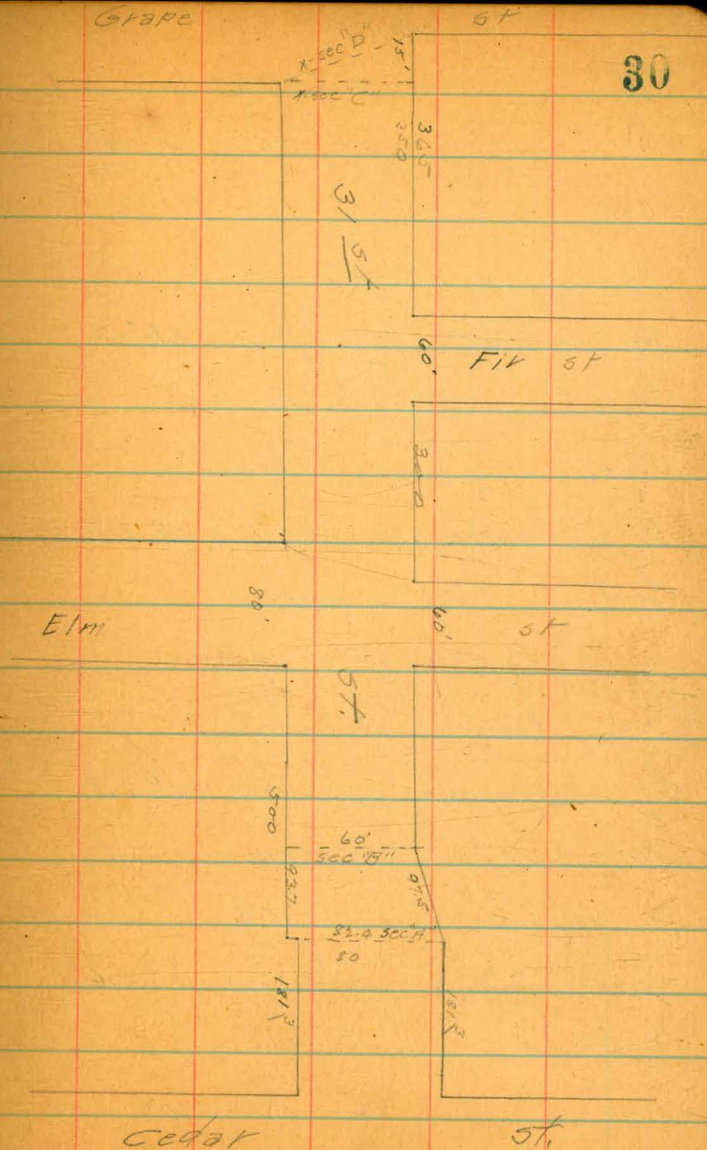
-30	40.6	173.7	✓
-10	38.2	176.1	✓
E	35.7	178.6	
crb	30.0		
1/4	24.0		
M	19.1	195.2	
1/4	16.3		
crb	13.3		
W	9.5	204.8	

T.P 0.70 202.78 12.22 202.08

Grape

57

30



202.78

2+0 N of Cedar

W	+1.3	201.05
Crk	1.6	
"A	4.4	
M	7.6	195.2
"A	10.3	
Crk	13.9	
E	21.3	181.5
+15	26.4	
+30	28.8	

2+25

-40	28.6	
-20	28.0	
E	21.0	181.8
Crk	17.7	
"A	15.5	
M	12.2	190.6
"A	9.0	
Crk	9.7	
W	1.3	201.05

2+50

31

W		10.3	192.5
T.P	0.60	190.43	12.95
Crk		2.1	189.83
"A		5.8	
M		8.3	182.1
"A		9.7	
Crk		11.6	
E		13.0	177.4
+40		15.0	

2+75 = X-section "B"

-40	14.6	175.8
E	13.6	176.8
Crk	12.7	
"A	11.7	
M	10.6	179.8
"A	8.8	
Crk	6.6	
W	3.1	187.3

190.43

3+0

-10	1.4	
W	5.1	185.3
erb	7.9	
1/4	10.2	
M	11.3	179.1
1/4	12.1	
erb	12.8	
E	13.3	177.1
+40	13.3	1

3+25

-35	6.6	
E	13.9	177.0
erb	12.6	
1/4	12.1	
M	11.5	178.9 ✓
1/4	10.9	
erb	10.1	
W	8.7	181.7
+35	5.6	184.8

32

3+50

-35	9.5	
W	10.3	180.1
erb	10.8	179.6
1/4	11.4	179.0
M	11.5	178.9 ✓
1/4	11.1	
erb	7.6	
E	4.2	186.2
+30	3.1	

3+75

E	0.6	189.8
erb	1.1	
1/4	2.2	
M	3.7	186.7
1/4	6.3	184.1
erb	8.6	
W	9.2	181.2
+30	8.5	181.9

		190.43		
		9+0		
- 40			53	
W			7.1	182.3
orb			3.5	
T.P.	12.45	202.59	0.29	190.14
"			11.5	
M			11.3	191.3
"			10.8	
orb			10.2	
E			9.8	192.8
		9+25		
E			6.9	195.7
orb			7.4	
"			7.3	
M			8.0	194.6
"			9.4	
orb			12.6	
W			15.1	187.5
+ 30			19.3	

		202.59		
		4+50		
- 20			13.8	
W			12.0	190.6
orb			10.2	
"			7.0	
M			4.9	197.7
"			4.1	
orb			3.5	
E			3.3	199.3
T.P.	12.34	214.69	0.24	202.35
		4+75		
E			10.6	204.0
orb			10.8	
"			11.4	
M			11.5	203.2
"			12.7	
orb			15.3	
W			18.2	196.5
+ 30			21.2	

214.69

510

- 20	13.0	201.7
W	10.9	203.8
crk	9.8	204.9
"A	9.2	205.5
M	8.5	206.2
"A	8.0	
crk	6.9	
E	6.2	207.5

5125

E	11.5	213.2
crk	2.4	
"A	4.0	
M	5.1	209.6
"A	6.3	
crk	7.2	
W	8.1	206.6
+ 20	10.3	

5150

34

W		4.5	210.2
crk		3.3	
"A		1.9	
M		0.1	214.6
T.P.	12.12	226.45	0.36 214.33
"A		10.9	5
crk		10.6	
E		11.0	215.4

5175

E		7.6	218.8
crk		7.5	
"A		7.3	
M		8.0	218.4
"A		9.2	
crk		10.2	
H.		12.0	214.4

226.45

6+0

W 7.6 218.8

crk 6.3

1/4 5.3

N 4.6 221.8

1/4 4.6

crk 5.0

E 5.4 221.0

6+25

E 3.3 223.1

crk 2.8

1/4 2.3

N 2.1 224.3

1/4 2.5

crk 2.7

N 3.4 223.0

T.P. 12.00 238.04 0.41 226.04

238.0

6+50

W 12.0 226.0

crk 11.4

1/4 11.6

N 11.6 226.4

1/4 11.8

crk 12.6

E 13.0 225.0

6+81³ = S.L. E/m = 60° on E.L. 280° on W.L.

E 11.0 227.0

crk 10.4

1/4 9.8

N 9.4 228.6

1/4 9.0

crk 8.8

W 8.9 229.1

35

238.0

5' center

W	7.8	230.2
center	7.9	230.1
1/4	8.2	229.8
M	8.6	229.4
1/4	9.0	
center	9.8	
E	10.4	227.6

5' 1/2

E	9.5	228.5
center	9.1	
1/4	8.2	
M	7.9	230.1
1/4	7.3	
center	6.9	
W	6.6	231.4

center

36

W	5.5	232.5
center	5.8	
1/4	6.4	
M	7.0	231.0
1/4	7.5	
center	8.4	
E	9.0	229.0

1/2 1/4

E	8.3	229.7
center	7.6	
1/4	6.7	
M	6.2	231.8
1/4	5.4	
center	4.6	
W	4.5	233.5

288.04

N curb

W	3.5	234.0
crb	3.9	
1/4	4.7	
M	5.3	232.7
1/4	5.5	
crb	6.7	
E	7.5	230.5

N.L. Elm

E	6.9	231.5
crb	5.9	
1/4	5.0	
M	4.4	233.6
1/4	3.7	
crb	3.0	
W	2.3	235.7

238.0

0+25 N of N.L. Elm on E 30 to 50 N

37

W	2.3	235.7
crb	2.6	
1/4	2.8	
M	3.4	234.6
1/4	3.6	
crb	4.5	
E	5.0	233.0

0+50

E	3.0	235.0
crb	2.6	
1/4	1.7	
M	1.4	236.6
1/4	0.8	
crb	0.6	
W	0.3	237.7
T.P.	11.08	248.73
	0.39	237.65

24873

175

W	9.1	239.6
erb	9.2	
"A	9.3	
M	9.9	238.8
"A	10.4	
erb	11.1	
F	11.6	237.1

140

E	9.2	239.5
erb	8.9	
"A	8.2	
M	7.9	240.8
"A	7.3	
erb	7.0	
W	6.7	242.0

1725

38

W	4.2	244.5
erb	4.5	
"A	4.6	
M	5.0	243.7
"A	5.3	
erb	5.9	
F	6.4	242.3

1450

E	3.50	245.2
erb	3.1	
"A	2.9	
M	2.1	246.6
"A	1.7	
erb	1.7	
W	1.5	247.2
T.R	11.26	259.87
	0.12	248.61

259.87

1+75

W	9.8	250.1
crk	10.1	
1/4	10.3	
M	10.6	249.3
1/4	10.6	
crk	10.9	
E	11.6	248.3

2+0

E	8.7	251.2
crk	8.1	
1/4	7.7	
M	7.6	252.3
1/4	7.1	
crk	6.9	
W	6.7	253.2

39

2+25

W	4.4	255.5
crk	4.7	
1/4	4.6	
M	4.7	255.2
1/4	4.7	
crk	5.0	
E	5.5	254.4

2+50

E	3.2	256.7
crk	3.0	
1/4	2.8	
M	2.9	257.0
1/4	2.8	
crk	2.8	
W	2.6	257.3

259.87

2775

W		1.0	258.9
Crk		1.3	
"A		1.3	
M		1.5	258.4
"A		1.5	
Crk		1.7	
E		1.5	258.4
T.P.	10.53	269.60	0.80 259.07
	340 = S.L. Fir st 60' wide		
E		10.2	259.4
Crk		10.3	
"A		9.9	
M		10.0	259.6
"A		9.8	
Crk		9.7	
W		9.5	250.1

S. Crk

40

W		9.2	260.4
Crk		9.2	
"A		9.4	
M		9.4	260.2
"A		9.4	
Crk		9.8	
E		9.7	259.9
	S "A		
F		9.3	260.3
Crk		9.3	
"A		9.0	
M		9.0	260.6
"A		8.9	
Crk		8.8	
W		8.6	261.0

269.6.0

center

W	8.2	261.4
orb	8.4	261.2
"A	8.5	261.1
M	8.5	261.1
"A	8.5	
orb	8.8	
E	8.8	260.2

N "A

E	8.4	261.2
orb	8.4	
"A	8.0	
M	8.1	261.5
"A	8.0	
orb	7.8	
W	8.0	261.6

N CURB

41

W	7.5	262.1
orb	7.4	
"A	7.5	
M	7.6	262.0
"A	7.5	
orb	7.8	
E	7.9	261.7

N. L. Fir

E	7.5	262.1
orb	7.4	
"A	7.1	
M	7.2	262.4
"A	7.2	
orb	7.0	
W	7.2	262.4

269.69

0725 N of Fik

W	6.0	263.6
crk	6.2	
"A	6.3	
N	6.5	263.1
"A	6.4	
crk	6.5	
E	6.6	263.0

0750

E	6.0	263.6
crk	5.8	
"A	5.7	
N	5.7	263.9
"A	5.6	
crk	5.5	
W	5.3	264.3

0775

42

W	4.5	265.1
crk	4.9	
"A	4.8	
N	5.1	264.5
"A	5.1	
crk	5.3	
E	5.5	264.1

170

E	5.0	264.6
crk	4.8	
"A	4.6	
N	4.5	265.0
"A	4.5	
crk	4.3	
W	4.1	265.5

269.60

1+25

W	3.7	265.9
crk	3.7	
"A	4.4	
M	4.2	265.4
"A	4.4	
crk	4.6	
E	4.9	264.7

1+50

E	4.9	264.7
crk	4.5	
"A	4.2	
M	4.0	265.6
"A	4.0	
crk	3.6	
W	3.3	266.3

43

1+75

W	2.9	266.7
crk	3.3	
"A	3.7	
M	3.7	265.9
"A	4.0	
crk	4.4	
E	4.8	264.8

2+0

E	4.6	265.0
crk	4.2	
"A	3.7	
M	3.5	266.1
"A	3.4	
crk	3.0	
W	2.8	266.8

269.60

2725

W	2.3	267.3
crk	2.6	
"A	3.1	
M	3.0	266.6
"A	3.3	
crk	3.6	
E	4.1	265.5

2750

E	3.6	266.0
crk	3.2	
"A	2.8	
M	2.4	267.2
"A	2.6	
crk	2.1	
W	2.1	267.5

2775

44

W	1.6	268.0
crk	1.7	
"A	1.8	
M	2.0	267.6
"A	2.3	
crk	2.5	
E	2.6	267.0

370

E	2.0	267.6
crk	1.8	
"A	1.5	
M	1.4	268.2
"A	1.4	
crk	1.0	
W	1.1	268.5
T.P.	5.99	274.39
	0.70	268.90

274.39

3725

W	5.3	269.1
erb	5.3	
"A	5.4	
M	5.3	269.1
"A	5.5	
erb	5.6	
E	5.8	268.6

3750 x section "C" page 30

E	5.9	268.5
erb	4.8	
"A	4.7	
M	4.6	269.8
"A	4.8	
erb	4.6	
W	4.8	269.6

x sec "D" = S.L. Grapc sf

45

W	4.8	269.6
erb	4.6	
"A	4.6	
M	4.5	269.9
"A	4.6	
erb	4.4	
E	4.5	269.9

	61.37		
	0775		
W		9.2	52.2
crb		9.2	52.2
1/4		9.3	52.1
M		9.2	52.2
1/4		9.2	52.2
crb		9.0	52.4
F		8.9	52.5

	170		
E		8.9	52.5
crb		9.1	52.3
1/4		8.9	52.5
M		9.0	52.4
1/4		9.0	52.4
crb		9.1	52.3
W		8.9	52.5

	61.37		
	1725		
W		8.3	53.1
crb		8.5	52.9
1/4		8.8	52.6
M		8.6	52.8
1/4		8.6	52.8
crb		8.5	52.9
F		8.5	52.9

	1750		
E		7.8	53.6
crb		8.0	53.4
1/4		7.8	53.6
M		8.0	53.4
1/4		7.9	53.5
crb		7.6	53.8
W		7.3	54.1

61.37

1+75

W		4.7	56.7	
crb		5.0	56.4	
"A		5.4	56.0	
M		5.4	56.0	
"A		6.0	55.4	
crb		6.4	55.0	
E		6.4	55.0	
T.P.	12.62	72.97	1.02	60.35

2+0

E		14.1	58.9
crb		13.3	59.7
"A		13.7	59.3
M		13.0	60.0
"A		12.4	60.6
crb		12.1	60.9
W		11.0	62.0

72.97

2+25

48

W		6.2	66.8
crb		7.4	65.6
"A		7.7	65.3
M		8.5	64.5
"A		8.7	64.3
crb		8.9	64.1
E		9.4	63.6

2+50

E		6.7	66.3
crb		6.5	66.5
"A		6.6	66.4
M		6.4	66.6
"A		6.4	66.6
crb		6.0	67.0
W		5.0	68.0

72.97

2+75

W	4.3	68.7
erb	5.0	68.0
1/4	5.3	67.7
M	4.9	68.1
1/4	5.2	67.8
erb	5.7	67.3
E	5.9	67.1

3+0 = S.L. "B" st Being graded

E	4.6	68.4
erb	4.3	68.7
1/4	3.8	69.2
M	3.3	69.7
1/4	3.4	69.6
erb	3.4	69.6
W	2.8	70.2

T.P. 12.06 84.71 0.32 72.65

84.71

N.L. "B"

49

W	6.5	78.2
erb	7.3	77.4
1/4	8.4	76.3
M	9.3	75.4
1/4	10.6	74.1
erb	11.6	73.1
E	11.8	72.9

0+25 N of "B"

E	10.5	74.8
erb	10.3	74.4
1/4	9.2	75.5
M	8.3	76.4
1/4	7.1	77.6
erb	6.0	78.7
W	4.9	79.6

8471

0750

W	4.7	80.0
crk	5.3	79.4
1/4	6.1	78.6
M	7.5	77.2
1/4	8.4	76.3
crk	9.5	75.2
E	9.4	75.3

0775

E	8.2	76.5
crk	8.0	76.7
1/4	7.2	77.5
M	6.1	78.6
1/4	5.3	79.4
crk	4.3	80.4
W	3.3	81.4

1+0

50

W	1.2	83.5
crk	3.0	81.7
1/4	3.8	80.9
M	4.7	80.0
1/4	5.6	79.1
crk	6.3	78.4
E	6.6	78.1

1+25

E	5.0	79.7		
crk	4.2	80.5		
1/4	3.4	81.2		
M	2.9	81.8		
1/4	2.3	82.4		
crk	0.6	84.1		
W	7.0	85.7		
T.P.	12.01	96.25	0.67	84.04

9605

1750

W	7.0	89.0
crk	8.6	87.4
1/4	9.5	86.5
M	10.2	85.8
1/4	11.4	84.6
crk	12.4	83.6
F	14.2	81.8

1775

F	11.9	84.1
crk	10.3	85.7
1/4	8.8	87.2
M	6.8	89.2
1/4	5.2	90.8
crk	4.2	91.8
W	3.0	93.0

2+0

51

W	0.5	95.5
crk	1.2	94.2
1/4	3.8	92.2
M	5.2	90.8
1/4	7.1	88.9
crk	8.7	87.3
F	10.1	85.9

2+25

F	8.3	87.7		
crk	7.0	89.0		
1/4	5.2	90.8		
M	3.4	92.6		
1/4	1.8	94.2		
T.P.	12.11	107.72	0.49	95.61
crk			11.3	96.4
W			9.9	97.8

107.72

2+50

W	7.1	100.6
crk	8.6	99.1
1/4	10.6	97.1
M	12.1	95.6
1/4	13.8	93.9
crk	15.6	92.1
E	17.3	90.4

2+75

E	14.2	93.5
crk	12.1	95.6
1/4	9.9	97.8
M	8.8	98.9
1/4	6.7	101.0
crk	5.4	102.3
W	3.9	104.3

2+87

52

W	1.8	105.9
crk	2.6	105.1
1/4	4.8	102.9
M	6.9	100.8
1/4	8.0	99.7
crk	10.0	97.7
E	10.2	97.5

T.P 12.53 120.16 009 107.63

3+028 L. of A' st graded

E	14.2	106.0
crk	14.2	106.0
1/4	13.5	106.7
M	13.1	107.1
1/4	13.0	107.7
crk	12.6	107.6
W	12.1	108.1

120.16

N.L. "A" 5T

W	1.8	118.4
erb	4.0	116.2
1/4	5.5	114.7
M	6.9	113.3
1/4	7.2	112.4
erb	8.8	111.4
E	10.3	109.9

0+25 N of "A"

E	5.7	114.5		
erb	4.8	115.4		
1/4	4.5	115.7		
M	3.5	116.7		
1/4	2.1	118.1		
erb	0.1	120.1		
T. P.	12.32	132.39	0.09	120.07
W	10.3	122.1		

132.39

0+50

53

W	6.3	126.1
erb	8.3	123.1
1/4	10.7	121.7
M	12.4	120.0
1/4	13.7	118.7
erb	15.2	117.2
E	15.9	116.5

0+75

E	12.0	120.4
erb	12.6	119.8
1/4	10.5	121.9
M	8.9	123.4
1/4	6.8	125.6
erb	5.1	127.3
W	4.1	128.3

132.39

1706² on W.L. 81405² on E.L. = Park Line

W	0.8	131.6
crk	2.4	130.0
"A	3.6	128.8
M	6.2	126.2
"A	8.0	124.4
crk	10.2	122.2
E	11.8	120.6

Levels Park Blvd University to El Cajon 4/11
 B.M. 3PK N.W. University Park. 315.91

Remble
 Shaw
 McHenry

0+50

55

B.M. 990 325.81
 0+0 = N.L. University on N.L. Park

W.L. 10.2 315.6
 +5 11.3 314.5
 Crk 11.4 314.4

0+25 N = N.L. University on E.L. Park

-4 12.7 312.1
 W.L. 12.0 313.8
 +2 11.1 314.7
 W Crk 11.4 314.4
 E Crk 7.3 318.5
 +18 6.5 319.3
 E.L. 5.5 320.3

E.L. 5.3 320.5
 +3 6.1 319.7
 E Crk 7.1 318.7
 W Crk 11.3 314.5
 +17 11.5 314.3
 W.L. 12.3 313.5
 +5 14.4 311.4

0+75

-5 13.8 312.0
 W.L. 11.7 314.1
 +2 11.1 314.7
 W Crk 10.9 314.9
 E Crk 5.9 319.9
 +18 5.4 320.4
 E.L. 4.4 321.4

1+0

E.L. 3.9 321.9
 +2 4.7 321.1
 E Crk 5.1 320.7
 W.L. 10.3 315.5
 +17 10.4 315.4
 W.L. 11.7 314.1
 +5 13.8 312.0

1+25

W.L. 10.1 315.7
 W Crk 9.7 316.1
 E.L. 4.8 321.0
 E.L. 3.6 322.2
 +4 2.1 323.7

	325.81		
	1750		
- 4		0.1	325.7
E.L.		1.6	324.2
+ 4		3.5	322.3
E. crk		3.7	322.1
W. "		9.1	316.7
W. L.		2.4	316.4

	1775		
W. L.		2.7	317.1
W. crk		2.4	317.4
E. "		3.2	322.6
+ 19 bot wall		2.4	323.4
Top wall E.L.		0.3	325.5

	270		
Top wall E.L.		0.1	325.7
bot " " "		1.4	324.4
E. crk		2.0	323.8
W. "		7.6	318.2

W. L.		2.0	317.8
T. P.	10.96	333.06	3.71
			322.10

	2725		
W. L.		14.4	318.7
W. crk		14.1	319.0
E. "		2.7	324.6
+ 16		2.4	324.7
E. L.		7.2	325.9
+ 3		6.0	327.1

	2750		
- 5		5.3	327.8
E. L.		6.8	326.3
+ 4		2.0	325.1
E. crk		2.3	324.8
W. "		13.5	319.6
W. L.		13.5	319.6

	2775		
W. L.		12.7	320.4
W. crk		12.7	320.4
E. crk		7.7	325.4
+ 16		7.6	325.5
E. L.		6.4	326.7
-			
+ 3		5.1	328.0

	370		
- 5		4.3	328.8
E. L.		5.7	327.4
+ 4		7.1	326.0
E. crk		7.3	325.6
W. crk		11.8	321.2
W. L.		12.3	320.8

	3725		
W. L.		11.5	321.6
W. crk		11.5	321.6
E. "		7.0	326.1
+ 15		6.6	326.5
E. L.		5.0	328.1
+ 4		3.8	329.3

3+50

-4	3.6	329.5
E.L.	4.8	328.3
+5	6.2	326.9
E.ck	6.6	326.5
W. 11	11.0	322.1
+17	11.0	322.1
E.L.	12.1	321.0
+5	14.4	318.7

3+75

-5	13.3	319.8
E.L.	11.2	321.9
+3	10.2	322.9
W.ck	10.2	322.9
E. 11	6.5	326.6
+16	5.9	327.2
E.L.	4.9	328.2
+6	3.7	329.4

4+0

-6	3.7	329.4
E.L.	4.9	328.2
+4	5.7	327.4
E.ck	6.3	326.8
W. 11	7.6	323.5
W.L.	9.5	323.6

4+25

-3	11.6	321.5
W.L.	10.9	322.7
+3	9.3	323.8
W.ck	7.0	324.1
E.ck	5.8	327.3
+18	5.3	327.8
E.L.	4.5	328.6
+5	3.3	329.8

4+50

+4	3.2	329.9
E.L.	4.3	328.8
+2	4.8	328.3
E.ck	5.5	327.6
W. 11	8.3	324.8
+17	8.6	324.5
W.L.	9.7	323.4
+9	11.0	322.1

4+75

-5	10.1	323.0
W.L.	7.0	324.1
+4	8.0	325.1
W.ck	7.4	325.7
E. 11	5.0	328.1
+18	4.3	328.8
E.L.	3.7	329.4
+3	2.7	330.4

333.06

5+0

3	333.1	2.4	330.7
E.L.		3.0	330.1
+4		4.2	328.9
E.crb		4.7	328.4
w.crb		6.7	326.4
w.L.		7.5	325.6

5+25

w.L.		7.0	326.1
w.crb		6.4	326.7
E.L.		7.3	328.8
+18		3.5	329.6
E.L.		2.8	330.3
+5.		1.8	331.3

5+50

-4		2.1	331.0
E.L.		2.8	330.3
+2		3.3	329.8
E.crb		3.8	329.3
w.crb		5.3	327.8
w.L.		5.6	327.5

5+75

w.L.		5.0	328.1
w.crb		4.9	328.2
E.crb		3.4	329.7
+18		2.8	330.3
E.L.		2.3	330.8
+2		1.7	331.4

5+99 = S.L. Lincoln on E.L. Park

-2		1.2	331.9
E.L.		1.5	331.6
+3		2.0	331.1
E.crb		2.4	330.7
w.L.		4.1	329.0
w.L.		4.2	328.9

6+39 = S.L. Lincoln on W.L. Park

w.L.		2.50	330.56
crb cement curb on Lincoln		2.75	330.31
T.P.	9.56	341.86	0.76
			332.30

58

Note - Cement curb & side walk on W. of Park from
Lincoln for 215.5' N

341.86

0+0 = N.L. Lincoln on W. Park,

0+0

W.L. 9.50 334.4

W.Crb 9.75 334.1

0+25

- 4
W.L. 7.2
8.0
+ 7
Crb 9.2
9.45 334.4

0+50

- 5
W.L. 6.8
7.8
+ 7
Crb 8.75
9.05 332.8

0+75

- 4
W.L. 6.4
7.0
+ 7
Crb 8.4
8.65 333.2

1+0

- 6
W.L. 5.6
7.0
+ 7
Crb 8.1
8.35 333.5

59

1+25

- 6
W.L. 5.1
6.6
+ 7
Crb 7.8
8.00 333.9

1+50

- 3
W.L. 4.5
5.5
+ 7
Crb 7.3
7.65 334.2

1+75

- 4
W.L. 4.6
6.0
+ 7
Crb 6.9
7.20 334.7

2+0

- 5
W.L. 4.5
5.8
+ 7
Crb 6.5
6.85 335.00

2+15.5 = end of cement curb

- 3
W.L. 4.7
5.5 336.4
+ 7
Crb 6.2
6.65 335.2

2+50

- 3
W.L. 4.8
5.8 336.1
Crb 6.0

	341.86		
N.L.	2+75	5.6	336.3
crk		6.0	
N.L.	3+0	5.4	336.5
crk		5.7	
N.L.	3+25	5.2	336.7
crk		5.4	
N.L.	3+50		
crk		4.7	337.2
		4.9	
N.L.	3+75		
crk		4.4	337.5
		4.7	
N.L.	4+0		
crk		4.0	337.9
		4.4	
N.L.	4+25		
crk		3.7	338.2
		3.8	

4+52.9 = intersection W.L. Park & E.L. Center

Note - Cement curb & sidewalk on E.L. of Park from N.L. Lincoln for 100' N.

	241.86		
			60
			0+0 = N.L. Lincoln on W.L. Park
E.L.	0+0		9.20
crk			9.55
			334.31
E.L.	0+25		8.6
+7			9.0
crk			9.35
			334.51
E.L.	0+50		5.2
+7			8.7
crk			9.05
			334.81
E.L.	0+75		8.1
+7			8.5
crk			8.90
			334.96
E.L.			8.0
+7			8.3
crk			8.55
			333.31

1+0 = end of cement curb

	341.86		
	1+25		
-5		7.5	
E.L.		7.8	334.1
Crk		8.0	
	1+50		
-5		6.6	
E.L.		7.5	334.4
Crk		7.8	
	1+75		
-5		7.0	
E.L.		7.5	334.4
Crk		7.6	
	2+0		
-5		6.4	
E.L.		7.1	334.8
Crk		7.6	
	2+25		
-5		6.4	
E.L.		7.1	334.8
Crk		7.3	
	2+50		
-5		6.2	
E.L.		6.8	335.1
Crk		7.1	

	2+75		
E.L.		6.8	335.1
Crk		6.9	
	3+0		
E.L.		6.3	335.6
Crk		6.5	
	3+25		
E.L.		6.0	335.9
Crk		6.1	
	3+50		
E.L.		5.8	336.1
Crk		5.8	
	3+75		
E.L.		5.4	336.5
Crk		5.6	
	4+0		
E.L.		5.6	336.3
Crk		5.6	
	4+25		
-3		5.8	
E.L.		5.2	336.7
Crk		5.4	
	4+50		
-3		5.7	
E.L.		5.0	336.9
Crk		5.2	

341.86

4+75

-3
E.L. 5.3 4.8 337.1

Crb 4.9

5+0

-3
E.L. 5.3 4.7 337.2

Crb 4.9

5+25

-3
E.L. 5.3 4.7 337.2

Crb 4.8

5+50

-3
E.L. 4.5 4.0 337.9

Crb 4.3

5+75

-3
E.L. 4.2 3.5 338.4

Crb 4.0

6+0 = S.L. Park St

E.L. 3.2 338.7

Crb 3.6

T.P. 597 347.37 0.46 341.40

347.37

0+0 = N.L. Campos on N.L. Park

62

W.L. 0+0 5.0 342.4

Crb 5.3 342.1

0+25 N

W.L. 4.6 342.8

Crb 5.1 342.3

0+50

W.L. 4.6 342.8

Crb 4.8 342.6

0+75

W.L. 4.3 343.1

Crb 4.6 8

1+0

W.L. 4.0 343.4

Crb 4.4 343.0

1+25

W.L. 4.0 343.4

Crb 4.3

1+50

W.L. 3.8 343.6

Crb 4.3 343.1

1+75

W.L. 4.1 343.3

Crb 4.5

397.37

2+0

W.L. 4.3 343.1
 Cbk 4.5 344.9

- 2 2+25
 W.L. 3.1
 4.0 343.4
 Cbk 4.2

- 2 2+50
 W.L. 3.0
 3.9 343.5
 Cbk 4.3 343.1

- 2 2+75
 W.L. 3.3
 4.1 343.3
 Cbk 4.4

- 2 3+0
 W.L. 3.2
 4.4 343.0
 Cbk 4.6 344.8

- 2 3+25
 W.L. 3.2
 4.4 343.0
 Cbk 4.8

3+50

- 2 2.8
 W.L. 4.3 343.1
 Cbk 4.9 344.5

3+75

W.L. 4.2 343.2
 Cbk 4.8

4+0

W.L. 4.5 344.9
 Cbk 4.9 344.5

4+25

W.L. 4.5 344.9
 Cbk 4.9

4+50

W.L. 4.7 344.7
 Cbk 4.9 344.6

4+75

W.L. 4.7 344.7
 Cbk 5.0

5+0

W.L. 4.8 344.6
 Cbk 5.1

5+25

W.L. 4.8 344.6
 Cbk 5.1

347.37

5+50

W.L.

4.9

342.5

Crb

5.3

Note cement curb 2.50K from 5+86 to E.L. University

5+86

W.L.

4.6

342.65

Crb

4.70

6+0

W.L.

4.4

342.77

Crb

4.60

6+25

W.L.

4.3

342.87

Crb

4.50

6+50

W.L.

3.9

342.92

Crb

4.45

6+86 = E.L. Univ

W.L.

3.9

343.02

Crb

4.35

347.37

1+0 = 141. Folk on E.L. Park Blvd

64

0+0

E.L.

7.8

339.6

Crb

8.0

0+25

-5

11.1

E.L.

7.7

339.5

Crb

7.8

0+50

E.L.

7.7

339.7

Crb

7.4

0+75

E.L.

7.2

340.2

Crb

7.2

1+0

E.L.

7.0

340.4

Crb

7.3

1+25

-5

9.0

E.L.

7.2

340.2

Crb

7.2

1+50

-5

8.8

E.L.

7.2

340.2

Crb

7.1

	34737		
- 5	1+75	9.2	
E.Li		6.9	340.5
erb		7.0	
E.Li	2+0	6.8	340.6
erb		6.9	
E.Li	2+25	6.7	340.7
erb		6.7	
E.Li	2+50	6.9	341.0
erb		6.9	
E.Li	2+75	6.5	340.9
erb		6.4	
E.Li	5+0	6.7	340.7
erb		6.3	
E.Li	3+25	6.5	340.9
erb		6.3	
E.Li	1+50	6.4	341.0
erb		6.3	

	3475		65
E.Li		6.5	340.9
erb		6.6	
E.Li	4+0	6.8	340.6
erb		6.6	
E.Li	4+25	6.9	340.5
erb		6.8	
E.Li	4+50	7.0	340.4
erb		7.1	
E.Li	4+75	7.1	340.3
erb		7.2	
- 5	5+0	8.2	
E.Li		7.3	340.1
erb		7.3	
- 5	5+25	8.5	
E.Li		7.6	339.8
erb		7.4	

344.37 H.H.
 5+50

-5		9.9	
E.L.		7.7	339.7
crk		7.7	

5+75

-5		10.1	
E.L.		7.8	339.6
crk		7.8	

6+0 = S.L. Howard

-5		10.5	
E.L.		7.9	339.5
crk		8.0	

T.P. 5.29 344.79 7.87 339.50

N.L. Howard

-5		8.0	
E.L.		6.1	338.7
crk		6.1	

0+25 N

-5		8.8	
E.L.		5.7	339.1
crk		5.6	

344.79
 0+50

-5		8.0	
E.L.		5.3	339.5
crk		5.4	

0+75

-5		8.0	
E.L.		5.7	339.1
crk		5.5	

1+0

-5		7.4	
E.L.		5.7	339.1
crk		5.5	

1+25

-5		7.6	
E.L.		5.5	339.3
crk		5.3	

1+50

E.L.		5.2	339.6
crk		5.1	

1+75

-5		6.3	
E.L.		5.1	339.7
crk		5.1	

	344.79		
-5	270	6.1	
E.Li		4.6	340.2
crk		5.0	

	2725	6.0	
-5		4.6	340.2
E.Li		4.5	
crk			

	2750	6.0	
-5		4.1	340.7
E.Li		4.2	
crk			

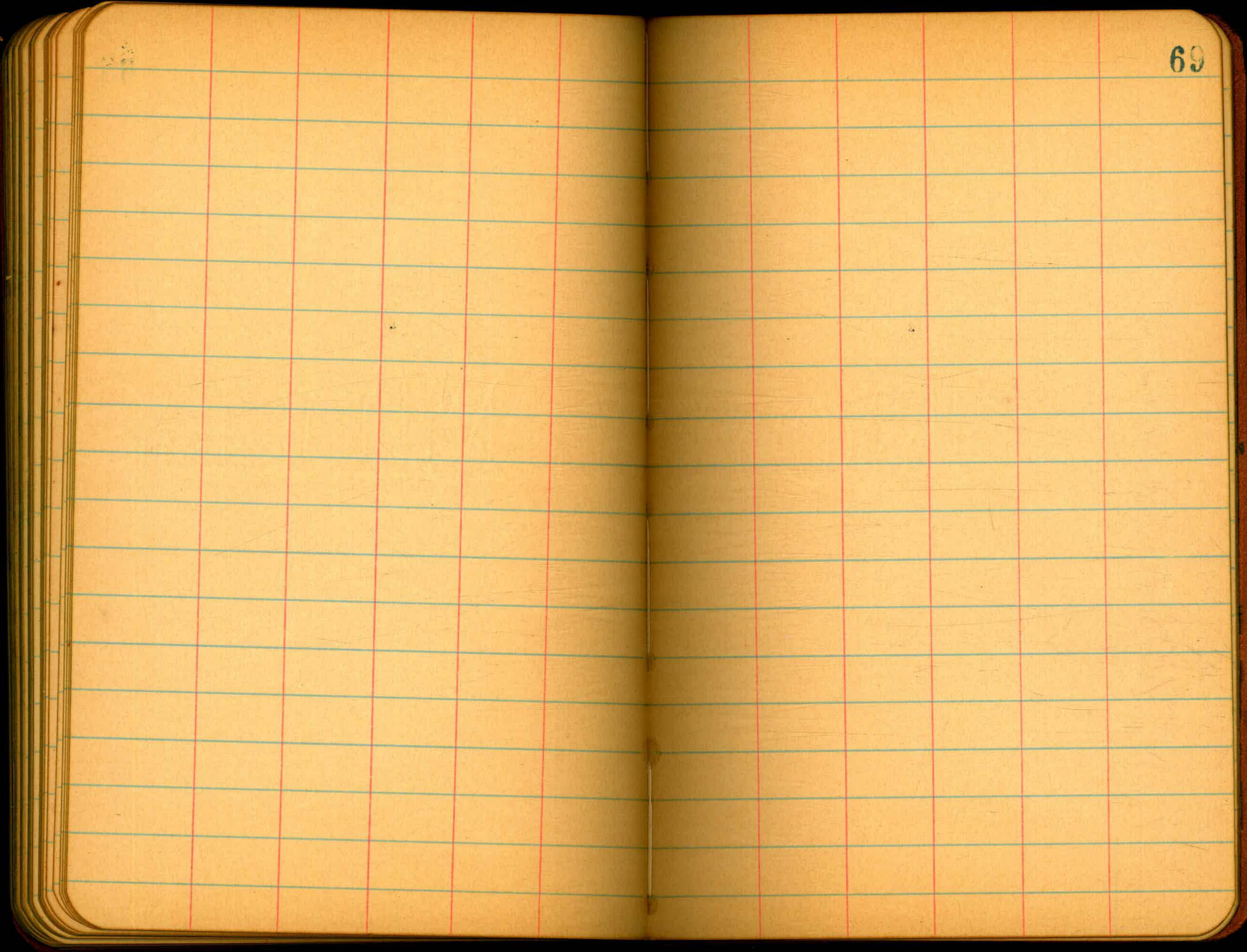
	2775		
E.Li		4.1	340.7
crk		4.3	

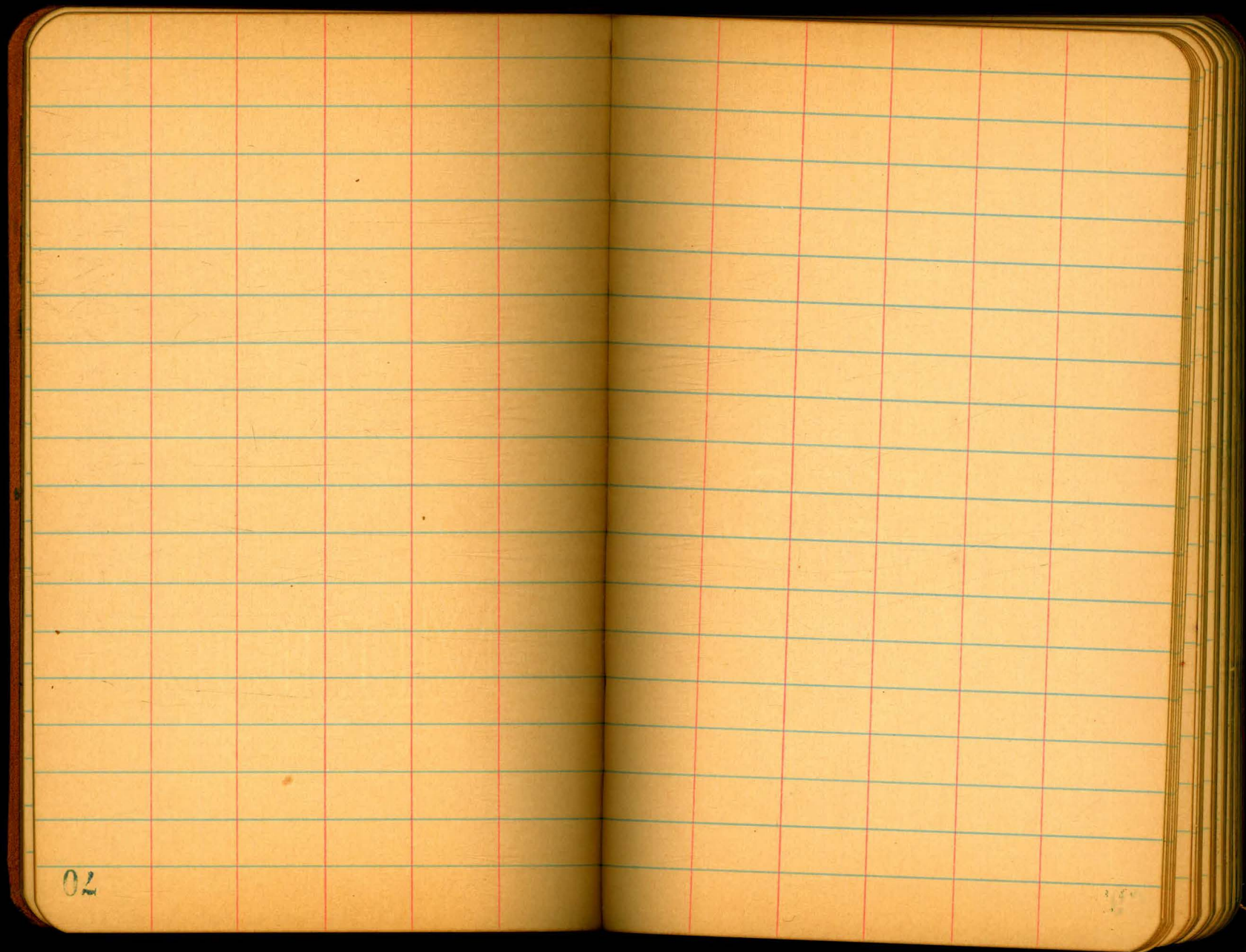
Note cement curbs 3dwn from Sta 3+07 to SL El Cajon

	3+07	4.1	
E.Li		4.1	
crk		4.45	340.34

3+37 = SL El Cajon

		4.3	
E.Li		4.3	
crk		4.75	340.04

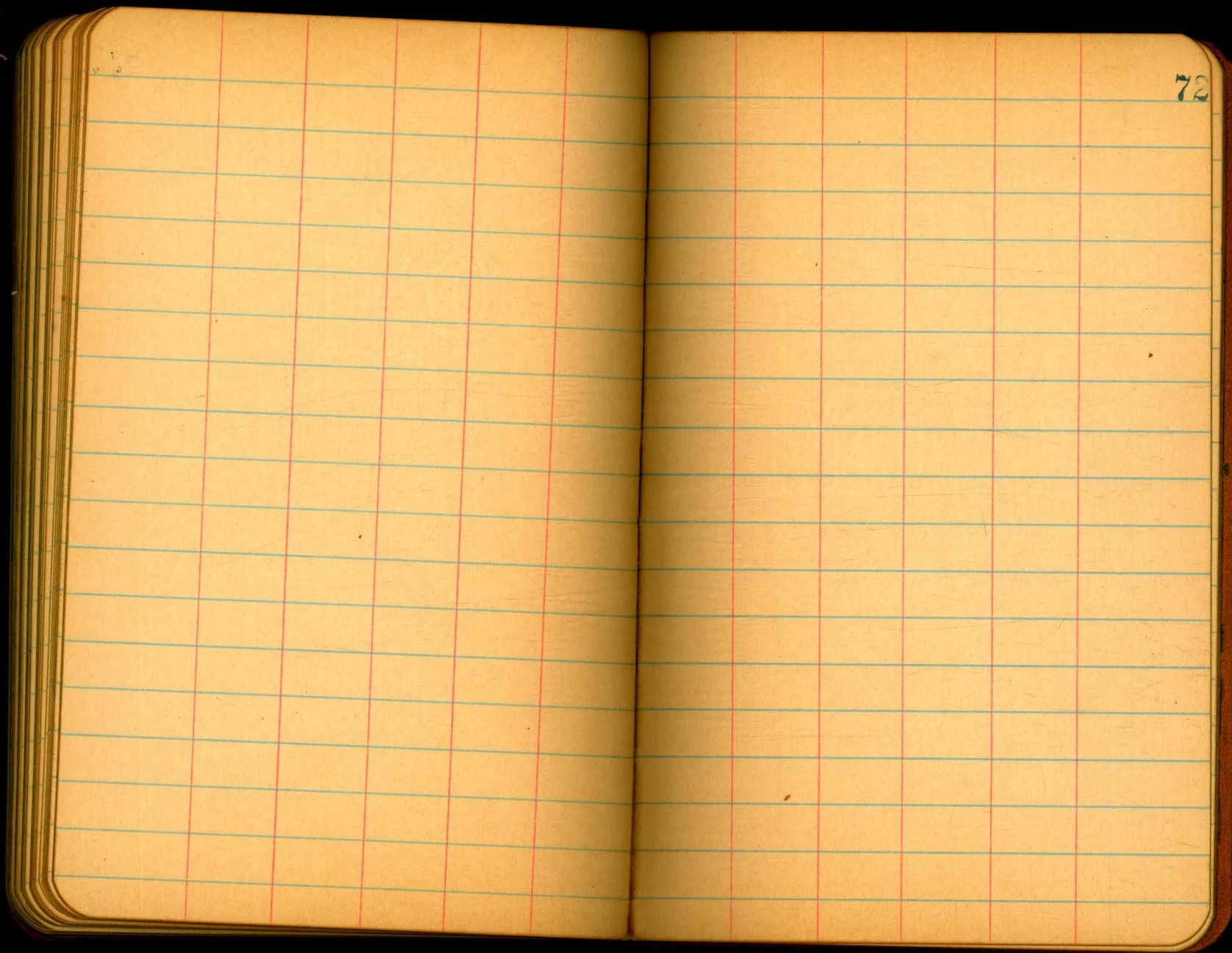




02

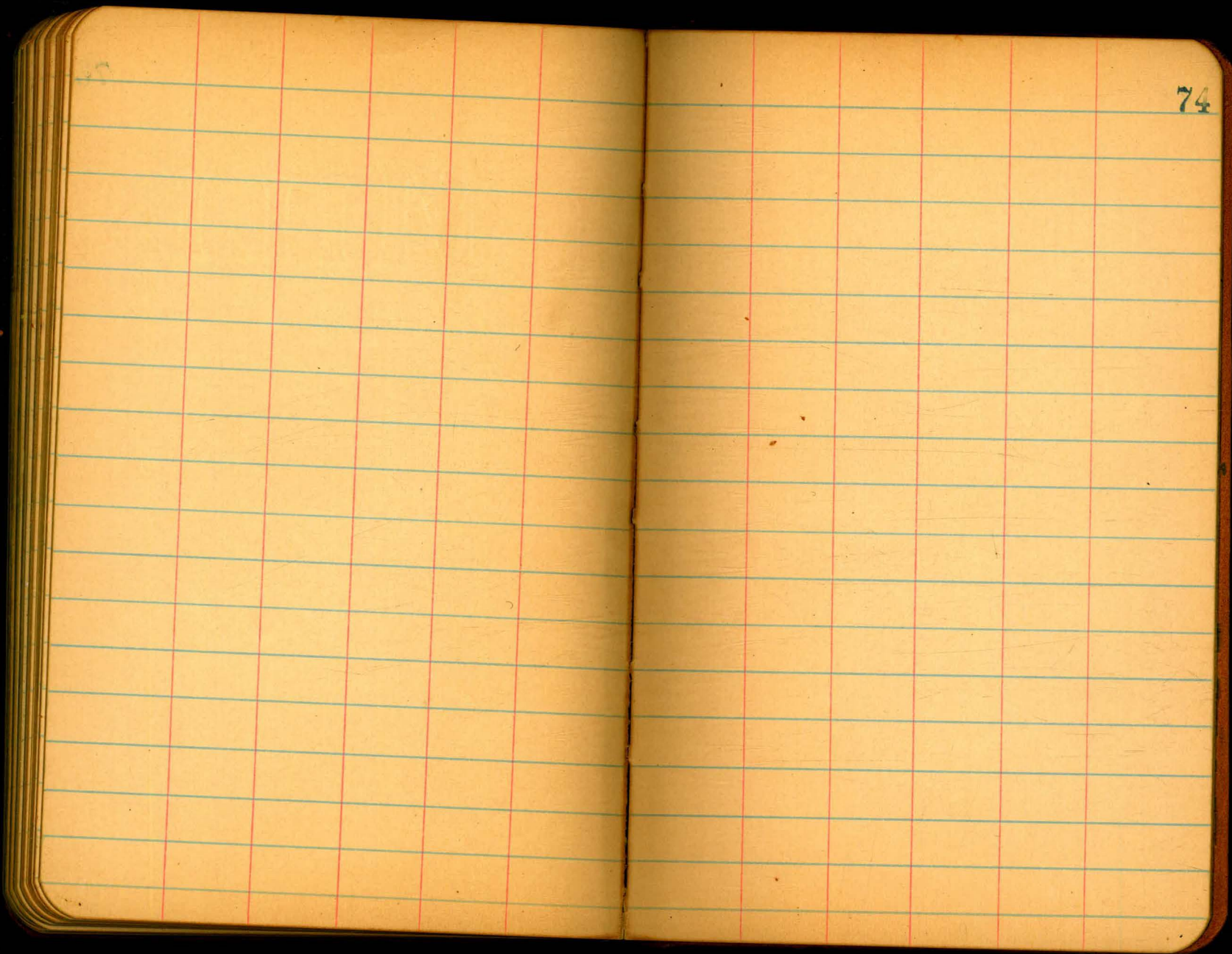
100

71

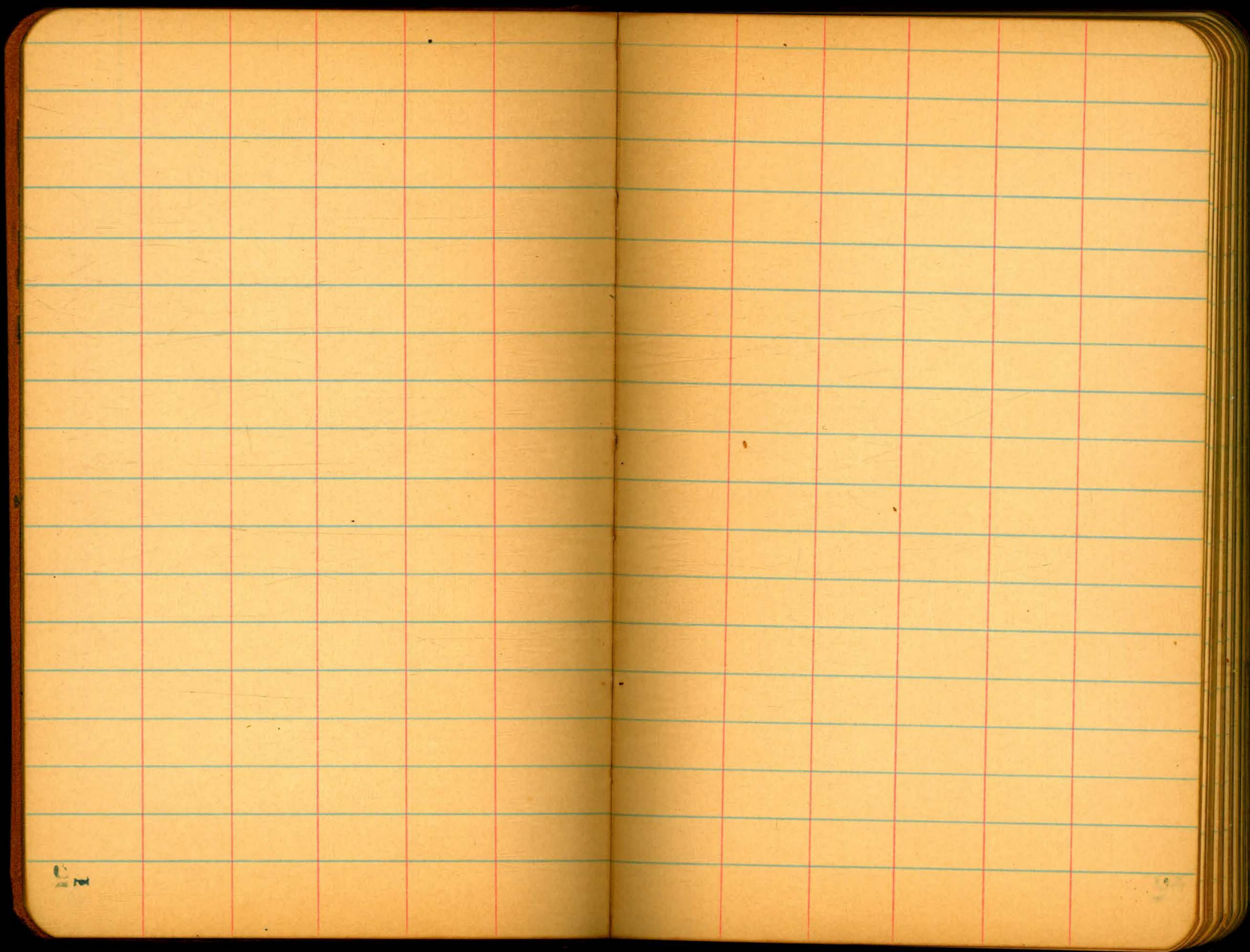


72

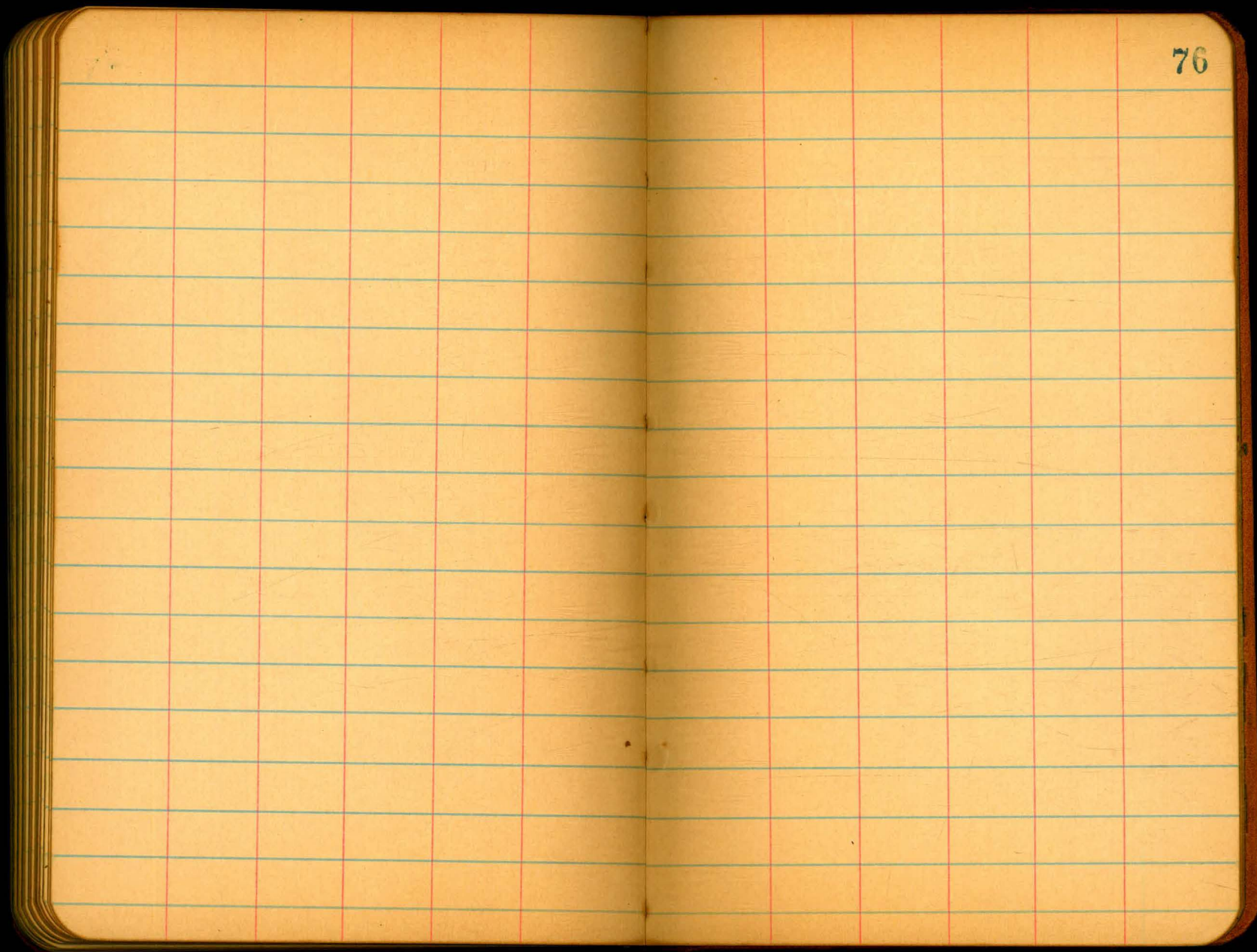
734



74



6
1924

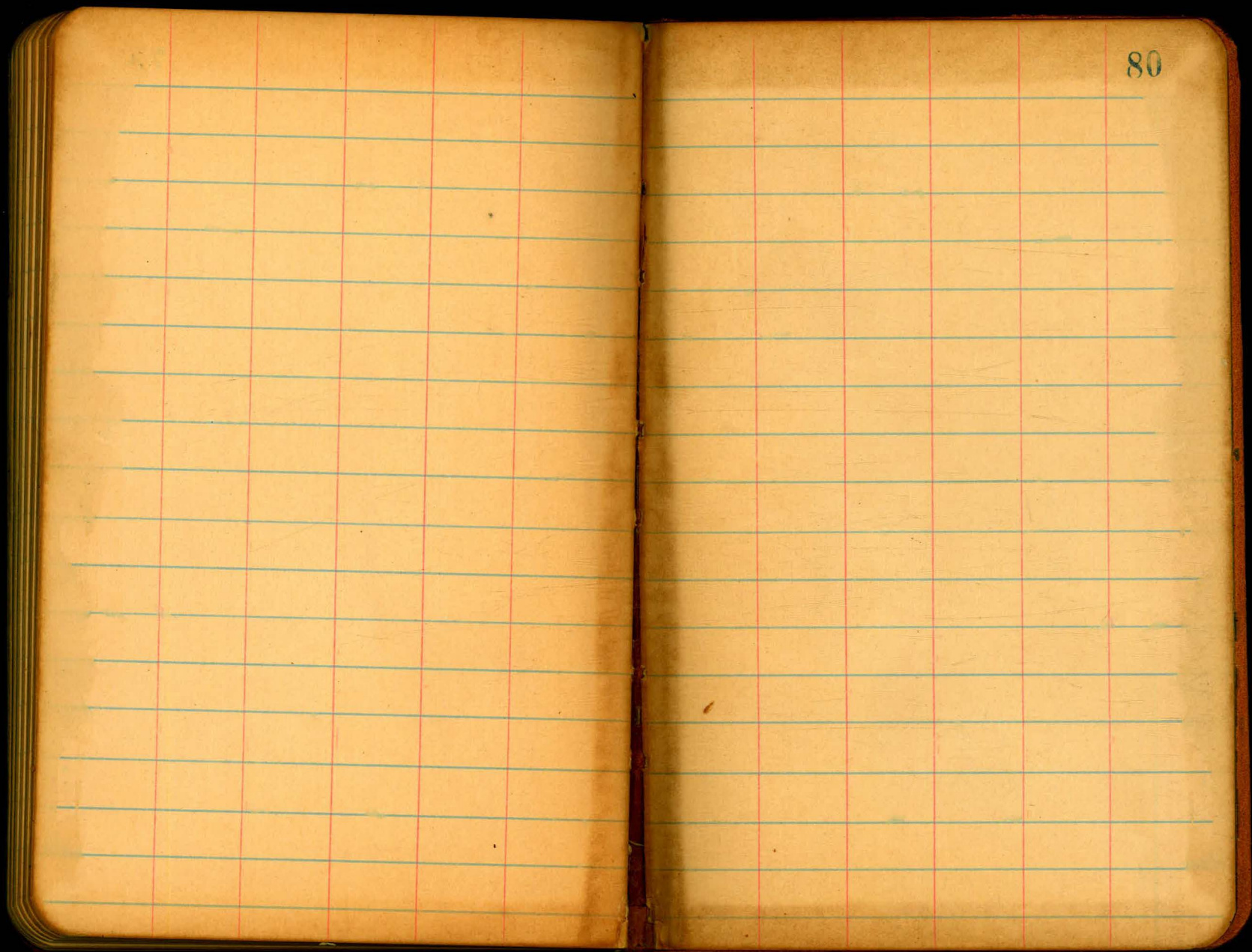


77

82

83

79



80

25 X 15 X 2.5
25 X 35 X 2

#400

Degrees	Lat.	Dep.	Degrees
0			
1	99.98	1.75	333.06
2	99.94	3.49	332.30
3	99.86	5.23	
4	99.76	6.98	
5	99.62	8.72	
6	99.45	10.45	333.06
7	99.25	12.19	332.30
8	99.03	13.92	
9	98.77	15.64	
10	98.48	17.36	330.37
11	98.16	19.08	
12	97.81	20.79	332.20
13	97.44	22.50	
14	97.03	24.19	
15	96.59	25.88	333.59
16	96.13	27.56	
17	95.63	29.24	332.96
18	95.11	30.90	
19	94.55	32.56	330.31
20	93.97	34.20	
21	93.36	35.84	
22	92.72	37.46	332.01
23	92.05	39.07	
24	91.35	40.67	
25	90.63	42.26	
26	89.88	43.84	
27	89.10	45.40	
28	88.29	46.95	
29	87.46	48.48	
30	86.60	50.00	
31	85.72	51.50	
32	84.80	52.99	
33	83.87	54.46	
34	82.90	55.92	
35	81.92	57.36	
36	80.90	58.78	
37	79.86	60.18	
38	78.80	61.57	
39	77.71	62.93	
40	76.60	64.28	
41	75.47	65.61	
42	74.31	66.91	
43	73.14	68.20	
44	71.93	69.47	
45	70.71	70.71	

West 40

Published by H. S. CROCKER COMPANY, Stationers, Drawing Materials, Mathematical Instruments, etc., San Francisco.

TRAVERSE TABLE FOR TRANSIT BOOK.
From 1° to 90° for a distance of 100.

Degrees	DEGREES.		½ DEGREE.		¼ DEGREE.		¼ DEGREE.		Degrees
	Lat.	Dep.	Lat.	Dep.	Lat.	Dep.	Lat.	Dep.	
0			100.00	0.44	100.00	0.87	99.99	1.31	89
1	99.98	1.75	99.98	2.18	99.97	2.62	99.95	3.05	88
2	99.94	3.49	99.92	3.93	99.91	4.36	99.88	4.80	87
3	99.86	5.23	99.84	5.67	99.81	6.10	99.79	6.54	86
4	99.76	6.98	99.73	7.41	99.69	7.85	99.66	8.28	85
5	99.62	8.72	99.58	9.15	99.54	9.58	99.50	10.02	84
6	99.45	10.45	99.41	10.89	99.36	11.32	99.31	11.75	83
7	99.25	12.19	99.20	12.62	99.14	13.05	99.09	13.49	82
8	99.03	13.92	98.97	14.35	98.90	14.78	98.84	15.21	81
9	98.77	15.64	98.70	16.07	98.63	16.50	98.56	16.93	80
10	98.48	17.36	98.40	17.79	98.33	18.22	98.25	18.65	79
11	98.16	19.08	98.08	19.51	97.99	19.94	97.90	20.36	78
12	97.81	20.79	97.72	21.22	97.63	21.64	97.53	22.07	77
13	97.44	22.50	97.34	22.92	97.24	23.34	97.13	23.77	76
14	97.03	24.19	96.92	24.62	96.81	25.04	96.70	25.46	75
15	96.59	25.88	96.48	26.30	96.36	26.72	96.25	27.14	74
16	96.13	27.56	96.00	27.98	95.88	28.40	95.76	28.82	73
17	95.63	29.24	95.50	29.65	95.37	30.07	95.24	30.49	72
18	95.11	30.90	94.97	31.32	94.83	31.73	94.69	32.14	71
19	94.55	32.56	94.41	32.97	94.26	33.38	94.12	33.79	70
20	93.97	34.20	93.82	34.61	93.67	35.02	93.51	35.43	69
21	93.36	35.84	93.20	36.24	93.04	36.65	92.88	37.06	68
22	92.72	37.46	92.55	37.86	92.39	38.27	92.22	38.67	67
23	92.05	39.07	91.88	39.47	91.71	39.87	91.53	40.27	66
24	91.35	40.67	91.18	41.07	91.00	41.47	90.81	41.87	65
25	90.63	42.26	90.45	42.66	90.26	43.05	90.07	43.44	64
26	89.88	43.84	89.69	44.23	89.49	44.62	89.30	45.01	63
27	89.10	45.40	88.90	45.79	88.70	46.17	88.50	46.56	62
28	88.29	46.95	88.09	47.33	87.88	47.72	87.67	48.10	61
29	87.46	48.48	87.25	48.86	87.04	49.24	86.82	49.62	60
30	86.60	50.00	86.38	50.38	86.16	50.75	85.94	51.13	59
31	85.72	51.50	85.49	51.88	85.26	52.25	85.04	52.62	58
32	84.80	52.99	84.57	53.36	84.34	53.73	84.10	54.10	57
33	83.87	54.46	83.63	54.83	83.39	55.19	83.15	55.56	56
34	82.90	55.92	82.66	56.28	82.41	56.64	82.16	57.00	55
35	81.92	57.36	81.66	57.71	81.41	58.07	81.16	58.42	54
36	80.90	58.78	80.64	59.13	80.39	59.48	80.13	59.83	53
37	79.86	60.18	79.60	60.53	79.34	60.88	79.07	61.22	52
38	78.80	61.57	78.53	61.91	78.26	62.25	77.99	62.59	51
39	77.71	62.93	77.44	63.27	77.16	63.61	76.88	63.94	50
40	76.60	64.28	76.32	64.61	76.04	64.94	75.76	65.28	49
41	75.47	65.61	75.18	65.93	74.90	66.26	74.61	66.59	48
42	74.31	66.91	74.02	67.24	73.73	67.56	73.43	67.88	47
43	73.14	68.20	72.84	68.52	72.54	68.84	72.24	69.15	46
44	71.93	69.47	71.63	69.78	71.33	70.09	71.02	70.40	45
45	70.71	70.71							