

Preliminary Sewers.

393

San Diego City Engineers Office
City Hall, San Diego, Cal.

Chollas Valley.

400

LEVEL

F.B. (IND) 393

Published by H. S. CROCKER COMPANY, Stationers, Drawing Materials, and Mathematical Instruments, San Francisco.

Table showing the difference of latitude and departure in running 80 chains at any course from 1 to 60 minutes.

MINUTES.	LKS.	MINUTES.	LKS.	MINUTES.	LKS.
1	21 $\frac{1}{2}$	21	49	41	95 $\frac{3}{4}$
2	4 $\frac{1}{2}$	22	51 $\frac{1}{2}$	42	98
3	7	23	53	43	100 $\frac{1}{2}$
4	9 $\frac{1}{2}$	24	56	44	102 $\frac{1}{2}$
5	11 $\frac{1}{2}$	25	58 $\frac{1}{2}$	45	105
6	14	26	60 $\frac{3}{4}$	46	107 $\frac{1}{2}$
7	16 $\frac{1}{2}$	27	63	47	109 $\frac{3}{4}$
8	18 $\frac{3}{4}$	28	65 $\frac{1}{2}$	48	112
9	21	29	67 $\frac{3}{4}$	49	114 $\frac{1}{2}$
10	23 $\frac{1}{2}$	30	70	50	116 $\frac{3}{4}$
11	25 $\frac{3}{4}$	31	72 $\frac{1}{2}$	51	119
12	28	32	74 $\frac{3}{4}$	52	121 $\frac{1}{2}$
13	30 $\frac{1}{2}$	33	77	53	123 $\frac{3}{4}$
14	32 $\frac{3}{4}$	34	79 $\frac{1}{2}$	54	126
15	35	35	81 $\frac{3}{4}$	55	128 $\frac{1}{2}$
16	37 $\frac{1}{2}$	36	84	56	130 $\frac{3}{4}$
17	39 $\frac{3}{4}$	37	86 $\frac{1}{2}$	57	133
18	42	38	88 $\frac{3}{4}$	58	135 $\frac{1}{2}$
19	44 $\frac{1}{2}$	39	91	59	137 $\frac{3}{4}$
20	46 $\frac{3}{4}$	40	93 $\frac{1}{2}$	60	140

TABLE FOR RUNNING ON SLOPES.

In the following table the first column shows the angle, the second the number of links to be added to a chain on the slopes, to make one chain, horizontal measurement.

ANGLE	COR. IN LINKS	ANGLE	COR. IN LINKS	ANGLE	COR. IN LINKS	ANGLE	COR. IN LINKS
0		0		0		0	
4	0.24	11	1.38	18	5.14	25	10.54
5	0.38	12	2.24	19	5.76	26	11.26
6	0.55	13	2.63	20	6.42	27	12.24
7	0.76	14	3.06	21	7.11	28	13.37
8	0.98	15	3.53	22	7.85	29	14.34
9	1.24	16	4.02	23	8.64	30	15.47
10	1.55	17	4.56	24	9.47	35	22.07



LEVEL BOOK

No. 400



MANUFACTURED BY

A.S. Crocker & Co.

SAN FRANCISCO
and
SACRAMENTO

1/10
10

Walt
Thom

Public house in alley between
Logan and Greeley
0+00 = 50 W of 31st

2
1

	6.72	78.20		71.48	On 31st/Valley
0+00			10.9	67.3	
T.P.	8.26	65.78	12.65	65.52	
+50' = W.L. 31st			2.6	62.2	
+50'			2.8	61.0	
1+10 = 0+00 + 1			8.6	57.2	
+50			11.2	54.6	
1			12.9	52.9	
T.P.	13.7	53.78	12.37	53.41	
+50			1.7	52.1	
2			3.2	50.6	
+50			4.6	49.2	
+75			5.6	48.2	
3			6.0	47.8	
+25'			6.6	47.2	
+50			7.9	45.9	
+75			9.9	43.9	

Profile plotted

Note, Line is $\frac{1}{2}$ of Alley to Sta 5+78 then jogs 12.5

		53.78		
4			12.4	41.4
TP	0.12	41.32	12.58	41.20
+50			6.6	34.7
+75			8.6	32.7
5			9.2	32.1
			9.0	32.3
+30			17.6	33.7
+50			6.0	35.3
	South		4.1	36.2
+78	North		5.9	35.4
+98			6.7	34.6
6+04			9.6	40.7
TP	1.73	42.43	0.62	40.70
+50			2.5	39.9
7			2.5	39.9
+25			4.5	37.9
+50			4.1	38.3
+65			3.3	39.1
+75			4.9	37.5

North and follows P.L.

			12.43	
8			5.3	37.1
+20			5.3	37.1
+40			11.4	31.0
TP	0.25	30.27	12.41	30.22
+65			5.8	24.5
TP	0.05	17.44	12.88	17.39
9			1.3	16.1
+10			5.1	12.3
+35			6.0	11.4
+65			5.5	11.9
10			7.0	10.4
+50			7.8	9.6
+75			9.7	7.7
11			12.1	5.3
+50			11.6	5.8
+75			11.5	5.9
			12.7	4.7
12			14.8	2.6
+38 ⁵			16.3	1.1

on Alignment

+38⁵ = 49+50⁵ Trench line.

$\frac{1}{2}$ Hatch
 7000 ft
 to Thomas

Line in Alley at North of Greeley
 from 30th to 33rd.

B27	8.96	79.87	70.91	NW Cross Lepan-30 th
T.P. Spk in Alley at Greeley	1.91	75.79	59.9	
+400 = EL 30 th		1.8	74.0	
+50		4.3	71.5	
1		6.9	69.4	
+50		9.2	66.6	
2		11.2	64.6	
T.P.	0.15	63.36	12.58	63.21
+50		0.8	62.6	
3		1.7	58.7	
+50		6.2	57.2	
A		7.2	56.2	
+50		7.8	55.6	
+70		7.6	55.5	
5		10.0	53.4	
T.P.	0.31	50.64	10.03	50.33
+50		1.4	49.2	
+75		3.4	47.2	

50.64

6 = W.L. 31 st	7.1	43.5
+30 = C. 31 st	10.6	40.0
+60 = EL. 31 st	12.2	38.4
7	9.6	41.0
+50	9.1	41.5
8	9.1	41.5
+30	9.2	41.4
+50	10.3	40.3
T.P. 0.14	27.90	12.98
9	1.0	36.9
+10	1.7	36.2
+35	5.3	32.6
+45	7.5	30.4
+55	13.9	24.0
T.P. 1.63	26.58	12.95
+62.5	RR track	1.5
+70	3.2	23.4

Profile plotted

1953			
+50		8.8	40.7
+55		11.3	38.2
+70		8.6	40.9
4		9.2	40.3
+40		12.1	37.4
+50		14.6	34.9
+60		16.3	33.2
+65		13.8	35.7
5		12.5	37.0
T.P.	0.27	37.59	12.21
+50		2.9	34.7
+75		4.5	33.1
6	-W.L. 31 st	7.3	30.3
+10		7.8	29.8
+30	Cr. 31 st	7.6	30.0
+55		9.4	28.2
+60	FL 31 st	7.1	30.5

3759			
+65		3.7	33.9
+74	Q RR	3.0	34.6
+90		4.2	33.4
+95		8.6	29.0
7		10.4	27.2
+25		15.1	22.5
+30		13.1	24.5
+50		12.9	24.7
8		7.2	30.4
T.P.	1273	49.98	0.34
+50		11.7	38.3
+75		6.7	43.3
9		2.6	47.4
+50		1.4	48.6
+62		0.2	49.8
T.P.	995	59.64	0.32
10		6.8	52.8

59.64

+30	3.7	56.9
+50	2.2	57.4
11	2.1	57.5
+50	5.1	54.5
12	8.5	51.1
+50	12.8	46.8
+60 = W. h. 22 ^d	13.5	46.1

1 Hatch
 21 Moore
 10 Thomas

line in May between Westport and
 Valle from 303 to 322

6

3711.	0.80	9180	9100	Non NW Westport - 30 ^B
0+00 = F. h. 30 ^d			7.2	84.6
+50			9.9	81.9
+75			11.7	80.1
T.P.	00.5	7919	12.66	79.14
			1.9	77.3
+50			9.0	70.2
2			12.7	66.5
T.P.	0.16	66.80	12.55	66.54
+50			4.9	61.9
3			8.8	58.0
+50			10.6	56.2
+75			9.6	57.2
4			11.5	55.3
T.P.	0.15	57.29	12.66	54.14
+25			1.9	52.4
+50			5.5	48.5

Profile plotted
 J-1

		5429		
	+75		7.0	47.3
5			10.0	44.3
	+20		11.3	43.0
TP	2.5	43.64	12.80	41.49
	+50		3.6	40.0
6	WL 31st		7.4	36.2
	+20		7.7	35.9
	+25		1.4	42.2
	+30	Or 31st	0.6	43.0
	+35		1.6	42.0
	+50		9.1	34.5
	+60	Er 31st	10.3	33.3
	+95		12.9	30.7
7			14.5	29.1
	+10		13.4	30.2
	+50		10.5	33.1
8			1.3	42.3

		1369		
	T.P.	12.22	55.57	0.29
	+35			7.1
	+50			5.3
9		12.85	68.42	0.0
	+50			7.3
	+75			5.2
	10			3.8
	+50			2.1
	11			1.2
	+50			2.4
	12			4.3
	+50			6.0
	+60			6.2

1/2 Hatch
24 Board
To Thomas

Line in Alley between Woodman and
Franklin from 30th to 33rd

B.M.	120	8624	8514	50x in 184 SW Franklin 30 th
0+00 = EX 30 th		2.0	842	
+50		4.5	79.7	
1		7.3	78.9	
+50		11.9	74.3	
T.P.	0.21	73.47	12.98	73.26
2		2.4	71.4	
+25		3.6	69.9	
+50		7.3	66.2	
+75		11.2	62.3	
3		11.4	62.1	
+50		11.3	62.2	
T.P.	0.09	60.81	12.75	60.72
4		1.8	59.0	
+50		6.1	54.7	
T.P.	3.80	51.17	12.44	47.37
5		5.3	45.9	

51.7

				11.9	39.3
			+40		
			+85	11.8	39.4
			+97	13.7	37.5
			6	11.5	39.7
			+10	9.4	41.8
			+25	1.1	50.1
			+30	0.6	50.6
			+35	1.2	50.0
			+45	7.2	44.0
			+55	10.7	40.5
			+60 = 0+00	6.5	44.7
			+10		
			0+50	2.0	49.2
T.P.	917	60.16	0.18	50.99	
1	7+60		5.0	55.2	
	+50 8+10		1.8	58.4	
2	+60		4.9	55.3	
	+50 9+10		7.8	51.4	

Apple Street
 1842

	60+6			
	+75+135	10.8	494	
3	+60	10.2	500	
	+25+185	7.0	53.2	
	+50 10+10	3.7	56.5	
T.P.	1202 71.79	0.39	59.77	
	+75+135	7.9	63.9	
4	+60	6.4	65.7	
	+50 11+10	5.2	66.6	
5	+60	4.9	66.9	
	+50 12+10	3.5	68.3	
6	= W_h ⁺⁶⁰ 32 ^d	2.6	69.2	
	+30 ⁺⁹⁰ Cr.	2.3	69.5	
	+60 = FL ¹³⁺²⁰ = 0+100	2.2	69.6	
	0+50 +90	3.5	68.3	
	+90 14+10	5.2	66.6	
1	+20	6.7	65.1	
	+25 +45	8.5	63.3	

	71.79			
	+50 +90	5.8	63.0	
2	15+70	5.7	66.1	
	+25 +45	5.8	66.0	
	+50 +90	10.8	61.0	
T.P.	2.74 62.33	12.20	59.59	
	+75 +45	8.4	53.9	
3	16+70	13.4	48.9	
	+37 ⁺⁵⁷ W_h 33 ^d	19.2	43.1	
T.P.	12.66 74.52	0.47	61.86	
T.P.	8.88 83.25	0.15	74.37	

1/2 Hatch
27 Spout
70' Trench

line in Alley between Franklin
and Clay from 30th to 33rd Sts

	8325			
0+00 = Wh. 33 rd	67.0	78.3		
+50	4.3	79.0		
1	2.7	80.6		
+50	3.5	79.8		
2	5.0	78.3		
+50	5.8	77.5		
3	7.1	76.2		
+39 = E.H. 32 nd	8.7	74.6		
Cr. "	9.8	73.5		
W.W. "	11.0	72.3		
T.P. 296	76.01	10.20	73.05	
+89 0+50	5.0	71.0		
4+14				
+75	7.6	68.4		
1 4+39	8.5	67.5		
+50 +89	8.8	67.2		
5+14				
+75	7.9	68.6		

Profile plotted

76.01

5+39		8.1	67.9
+64			
+25		8.8	67.2
+89			
+50		8.6	67.4
3 6+39		7.9	68.6
+89			
+50		5.0	71.0
4 7+39		5.0	71.0
+50 +89		5.4	70.6
5 8+39		7.2	68.8
+50 +89		9.0	67.0
6 = 9+39 E.H. 31 st		9.8	66.2
T.P. 101	67.35	9.67	66.34
+15 9+54		2.0	65.4
+20 +59		8.3	59.1
Cr. +		7.5	59.9
+38 +77		7.3	60.1
+45 +84		0.8	66.6
W.W. 31 st +99 = 0+00		1.0	66.4

		67.25		
0	50 10+49		6.0	61.9
	+75 +94		9.2	58.2
1	10+99		13.5	53.9
	T.P. 3.50	57.93	12.92	57.43
	+20 11+19		9.1	48.8
	+40 +39		9.7	48.2
	+50 11+49		9.0	48.9
	+75 +94		1.7	53.2
2	11+99		3.6	54.3
	+50 12+49		4.0	53.9
3	12+99		2.8	55.1
	T.P.S. 13+74		0.5	57.4
	T.P. 12.15	69.89	0.19	57.74
	+50 13+49		8.0	61.9
4	13+99		4.3	65.6
	+25 14+74		1.5	68.9
	T.P. 9.75	79.34	0.30	69.59

		79.34		
	150 14+49		9.1	70.2
	+65 +64		7.0	72.3
5	14+99		5.9	73.4
	+50 15+49		6.3	74.0
	15+99		3.6	75.7
	6 = FL. 30-		5.51	73.83
	327.			74.81

1/2 Hatch
 31 from
 10 Thomas

Line between Webster & Clay
 from 30" - 33"

1377	4.77	77.76	72.99
0+00 = EL. 30"		4.7	73.1
+50		5.2	72.6
+75		5.8	72.0
1		5.2	72.6
+25		4.3	73.5
+50		3.5	74.3
2		4.6	73.2
+50		5.0	72.8
+75		3.9	73.9
3		5.6	72.2
+35		5.6	72.2
+50		6.7	71.1
4		10.0	67.8
+30		10.9	67.4
+50		11.8	66.0
+75		13.3	64.6

Profile placed sheet - m

RR Spk SW
 Webster - 30"

5					77.76		
						11.2	66.6
+25						7.8	70.0
+50						6.7	71.1
6						3.4	74.4
T.P.	5.71	79.64	3.83				73.93
+15						4.7	74.9
-25						10.2	69.4
+30						10.0	69.6
+35						10.5	69.1
+45						3.3	76.3
+55						0.4	79.2
+60 = EL. 31.2" = 0+00						1.7	77.9
T.P.	6.86	85.10	1.40				78.24
+80							
+20						5.2	79.9
+10							
+50						5.2	79.9
+7+60						5.0	80.1
+15+75						4.6	80.5

		85.70		
	+50 ⁸ +10	5.7	79.4	
2	8+60	6.8	78.3	
	+50 9+10	5.9	79.7	
3	9+60	4.9	80.2	
	+50 10+10	4.3	80.8	
TP	5.86	86.77	4.19	80.91
4	10+60	5.8	81.0	
	+55 +85	6.1	80.7	
	+50 11+10	5.2	81.6	
	+65 +95	4.7	82.1	
	+75 11+35	6.2	80.6	
5	11+60	6.4	80.4	
	+50 12+10	6.3	80.5	
6	12+60	4.5	82.3	
	+30 +80	3.9	83.4	
	+30 +90	4.1	82.7	
	+60 = 0+00 Fl 32 ⁰	1.6	82.2	

		86.77		
	0+50 +70	5.0	81.8	
1	14+20	4.3	82.5	
	50 +70	4.6	82.2	
2	15+20	6.3	80.5	
	+50 +70	8.2	78.6	
	+75 +95	9.2	77.6	
3	16+20	11.8	75.0	
TP	15.5	76.52	11.80	74.97
	+59			
	+37 = WL	23 ^d	8.4	68.1
	TP on Ferry		11.34	65.18

Hatch Line between M & N from -
 Moore 30' to trunk line sewer -
 Thomas

87m	3.41	78.38	74.77	NW Cor - 30' N (Grass)	7	6.2	73.9	80.11
0+00 = El. 30 th		4.8	73.6		+50	5.3	74.8	
+50		4.3	74.1		8	4.9	75.2	
1		5.0	73.4		+50	4.4	75.7	
+50		4.9	73.5		9	3.1	77.0	
2		4.9	73.5		+50	3.4	76.7	
+50		5.2	73.2		10	4.9	75.2	
3		5.2	73.2		+50	5.9	74.2	
+50		5.1	73.3		11	6.0	74.1	
4		5.3	73.1		+50	5.2	74.9	
+50		5.2	73.2		12	6.7	73.4	
5		4.9	73.5		+60	7.8	72.3	
TP	6.63	80.11	79.0		+90	8.9	71.2	
+50		6.3	73.8		13+20	9.4	70.7	
6		6.5	73.6		+50	9.9	70.2	
+30		5.8	74.3		+75	10.7	69.4	
+60		6.2	73.9		TP	2.73	72.20	10.64
							69.47	

Profile Blatted B-M

		72.20		
14		2.9	69.8	
+30		1.6	70.6	
+50		1.8	70.4	
+70		3.0	69.2	
+80		7.5	64.7	
+92	RR	6.9	65.8	
15		7.2	65.0	
+05		7.4	64.8	
+10		5.1	67.1	
+20		7.0	65.2	
+50		8.1	64.1	
+60		11.1	61.1	
TP	112	60.30	13.02	59.18
16		1.6	58.7	
+20		2.5	57.8	
+50		2.7	57.6	
17		3.6	56.7	

		60.30		
+50		4.6	55.7	
+55		5.5	54.8	
+66		13.3	47.0	
TP	0.70	47.95	13.02	47.28
+77		8.3	39.7	
TP	0.47	35.81	12.64	35.34
190		4.0	31.8	
18		9.2	26.6	
+10		12.3	23.5	
TP	3.80	26.55	13.06	22.75
+50		4.3	22.3	
19		4.4	22.2	
20		4.6	22.0	
+96	= 17 + 72 of trunk line	4.3	22.3	

2 Hatch
1/2 Ward
10. Thomas
Line between 2nd & 3rd N. from
30th to Truck line -

B.M.	503	80.00	71.97
0.00 = N.H. 98 th of		5.6	74.4
Cr. of 30 th			
+50		5.8	74.2
1		5.8	74.2
+50		5.0	75.0
2		5.0	75.0
+50		4.3	75.7
3		4.1	75.9
+50		3.4	76.6
4		3.1	76.9
+50		2.8	77.2
5		2.5	77.5
+30 cr. 21 st		2.6	77.4
+60		2.0	78.0
6		2.3	77.7
T.P.	3.27	80.98	2.30 77.70
+50		3.4	77.6

80.98

16

7		4.6	76.4
+50		4.7	75.3
8		4.7	75.3
+50		5.0	76.0
9		4.8	76.2
+50		4.8	76.2
10		4.0	77.0
+50		4.3	76.7
11		4.5	76.5
+60		6.3	74.7
+85		6.1	74.9
+90 cr.		5.7	75.3
12		6.2	74.8
+20		6.5	74.5
+50		6.8	74.2
13		4.7	76.3
+50		3.3	77.7

Profile B - ~~A~~

		80.98		
14			3.1	77.9
T.P.	1.25	79.15	3.08	77.90
+50			1.9	77.8
+90			1.4	77.8
+96			3.9	75.3
15			10.9	68.3
T.P.	2.64	68.95	12.84	56.31
+10			9.9	59.1
+15			11.5	57.5
+22.5	Φ RR		10.4	58.6
+35			11.9	57.1
T.P.	0.96	57.23	12.67	56.27
+50			10.5	46.7
T.P.	0.50	49.73	12.90	44.33
+65			6.9	37.9
T.P. (fence)	1.50	39.21	7.12	37.71
+90			8.8	30.4

		39.21		
16			12.9	26.3
T.P.	2.77	31.42	12.56	26.65
17			7.7	23.7
18			7.1	24.3

Uniform slope to Trunk line 19+96=13+12.

2
 Hatch
 to
 Thomas

Line between
 to Trunk Line.

1827	692	85.29	78.35	Mon SE 32 nd 1/2
0+00	E line 32 ^d	5.1	80.2	
+50		3.6	81.7	
1		3.6	81.7	
+50		3.9	81.4	
2		6.2	79.1	
+20		7.5	77.8	
+40		10.6	74.7	
T.P.	102	73.71	1260	72.69
+60		4.0	69.7	
+80		8.1	65.6	
+90		11.9	61.8	
T.P.	042	61.76	1237	61.34
3		1.6	60.2	
+03		1.7	60.1	
		4.7	57.1	
+10		9.2	52.6	
+13		11.0	50.8	

	61.76			
+23.5	Q Cuyamaca	10.1	51.7	
+30		11.5	50.3	
+45		10.7	51.1	
+65		13.8	48.0	
T.P.	040	49.62	1254	49.22
+80		5.4	44.2	
		11.2	38.4	
T.P.	150	38.51	12.61	37.01
+80		8.7	29.8	
+55		10.9	27.6	
5		11.7	26.8	
6		11.8	26.7	
7		12.0	26.5	
+75	Frankline	11.8	26.7	

Profile Blatted
 1/8/2

$\frac{2}{10}$ Hatch
Moore
Thomas

Line between J-K from 30th
To 33d.

8540

B.M.	770	7806	7036
E.L. 30th = 0000		4.8	73.3
+ 02		5.5	72.6
+ 50		5.4	72.7
1		5.1	73.0
+ 50		5.2	72.9
2		4.9	73.2
+ 50		4.6	73.5
3		4.2	73.9
+ 50		4.2	73.9
4		4.0	74.1
+ 50		4.0	74.1
5		4.3	73.8
+ 50		3.9	74.2
6		3.9	74.2
T.P. -----	11.20	8540	356
+ 50		11.0	74.4

last sketch
117 20th St.
Miami

7		10.6	74.8
+ 50		10.1	75.3
8	WL 21st	10.0	75.4
+ 30	C "	9.9	75.5
+ 60	EL "	9.6	75.8
9		9.2	76.2
+ 50		8.7	76.7
10		8.1	77.3
+ 50		7.1	78.3
11		6.7	78.7
+ 50		5.2	80.2
12		4.8	80.6
+ 50		4.5	80.9
13		4.1	81.3
+ 50		3.6	81.8
14		2.2	83.2
+ 60	WL 32d	2.5	82.9

Profile plotted
B-4

		8540		
+75		1.6	82.8	
+80		2.9	81.5	
+90		3.5	81.9	
15		3.7	81.7	
+02		2.6	82.8	
+20	F-L 22 ⁸	2.4	83.0	
TP	4.81	8781	2.40	830.0
+50		5.2	82.6	
16		6.0	81.8	
+50		6.8	81.0	
17		6.7	81.5	
+50		6.4	81.4	
18		6.4	81.4	
+15		6.4	81.4	
+45	WL 23 ⁹	9.3	78.5	
TP	Back at Alley bet J-J on 22 ^d	5.52	82.29	

$\frac{2}{11}$ Hatch
Pipes
Thomas

Line between J-J from EL Blk. 130
To 30th

TP (22-5)	471	8700		82.29
0+0 = EL Blk.			12.4	74.6
+40			4.7	82.3
+50			3.7	83.3
1			2.7	84.3
+50			3.0	84.0
2			2.8	84.2
+50			3.1	83.9
3			4.0	83.0
+33 = FL 32 ⁸			4.7	82.3
+50			5.7	81.3
+65			5.5	81.5
+80			5.3	81.7
+93 = WL			5.7	81.3
4			5.8	81.2
+50			6.5	80.5
5			6.7	80.3

Mid SE Cor
32^d Alley

Profile plotted
B. 1-5

8700

+50		6.4	80.6
6		6.8	80.2
+50		6.6	80.4
7		6.6	80.4
+50		6.7	80.3
TP	830 8350	6.80	80.20
8		5.7	79.8
+50		3.9	79.6
9		4.7	78.8
+50		4.4	79.1
10		4.6	78.9
+03	EL 31 st	4.9	78.6
+33	CR	4.9	78.6
+63	WL	5.0	78.5
11		5.2	78.3
+50		5.3	78.2
12		5.4	78.1

8350

21

+50		5.6	77.9
13		6.0	77.5
+50		6.3	77.2
14		6.5	77.0
+50		6.6	76.9
15		6.5	77.0
+50		5.9	77.6
16		5.8	77.7
+50		3.2	80.3
17		2.8	80.7
+50		1.3	82.2
137M	SW 31 st J	7.19	76.31 76.304
+75		0.7	82.8
18	about line of Cross server-main		

2 Hatch
13.5
Thames

Line between Hout I from
31 at to EL 1366-

	766	90.47	82.806	SE 32 nd -T 895ft	7	8.7	81.8
1377							
0+00 F EL 31 st							
+37 F of 31 = Demer line		2.4	88.1		+50	8.3	82.2
1		2.3	88.2		8	8.1	82.4
+50		2.5	88.0		+50	8.2	82.3
2		2.7	87.8		9	9.0	81.5
+50		3.2	87.3		TP 0.64	82.35	87.6
3		4.1	86.4		+10	1.6	81.5
+50		5.0	85.5		+25	5.4	97.0
4		5.5	85.0		+35	11.2	71.2
+50		6.5	84.0		TP 0.46	69.92	12.88
5		7.0	83.5		+50	2.3	67.6
+50		7.8	82.7		+75	7.9	62.0
6 = WL 32 nd		8.2	82.3		10	12.5	57.4
+30 CL "		8.6	81.9		TP	6.10	63.83
+50		9.9	81.1				
+55		8.2	82.3				
+60 EL "		8.4	82.1				

Profile plotted
C. H.

Top of Board
at fence Cor.

		153.74		
9			8.0	145.7
+50			7.3	146.4
10			5.9	147.8
+50			3.1	150.6
T.P.	9.80	163.51	0.23	153.51
11			8.0	153.3
+50			5.9	157.9
12			4.1	159.2
+50			4.6	158.7
13			5.9	157.4
+15			5.1	157.2
+30			6.5	156.8
+50			7.0	156.3
+80			7.5	155.8
14			9.4	153.9
+30			11.2	152.1
+38 = Ek	30 th St.		13.2	150.1
+37 = "	" " (grade)		15.2	148.1

2 Hatcher
12 Moore
10 Thomas

Line between G. M. H. from -
32^d East

1877	432	87.54	8322
WL 38 ^d		3.4	84.1
+20		3.5	84.0
+22		5.0	82.5
+30		4.8	82.7
+45		{5.2 3.7}	82.3 83.7
+60 = E.L. 32 ^d		4.3	83.3
+80		4.9	82.6
1		6.8	80.7
+25		8.7	78.8
+50		10.9	76.6
2		12.0	75.5
+50		11.7	75.8
+70		14.0	73.5
+80		11.3	76.2
+85		12.5	75.0
T.P	010	64.74	12.90 64.64

Profile places
B-6

64.74

25

+86		36	61.1
3		60	58.7
+10		11.2	53.5
+25		13.3	51.4
T.P	014	52.31	12.57 52.17
+45		2.2	50.1
+50		4.4	47.9
+60		8.4	43.9
+75		9.2	43.1
4		9.4	42.9
+15		10.1	42.2
+20		10.8	41.5
+25		8.9	43.4
+50		8.1	44.2
+60		6.3	46.0
T.P	12.41	64.52	0.20 52.11
+75		11.0	53.5

		6452		
v-			0.3	64.2
TP	4.78	69.09	0.21	64.31
+10			2.4	66.7
+50			2.0	67.1
6			3.4	65.7
+10			5.6	63.5
+25			8.8	60.3
+35			12.2	56.9
TP	0.19	56.52	12.66	56.43
+54	Wl. 33 rd st.		2.3	54.3
+80			4.6	52.0
+83			6.0	50.6
7			7.7	48.9
+25			11.3	45.3
TP	0.21	45.90	10.93	45.69
+40			1.7	44.2
8			5.6	40.3

		4590		
+50			7.0	38.9
9			8.2	37.7
+50			9.8	36.1
10			11.1	34.8
TP	1.02	33.92	13.0	32.90
+35			2.2	31.7
+50			3.6	30.3
11			4.7	29.2
12			4.6	29.3
13			4.7	29.2
+52 ⁵	= Truckline Samen		4.3	29.6
TP	6.26	39.80	4.38	29.54
14			4.9	29.9
15			4.4	30.4
16			4.3	30.5
17			3.8	31.0
TP	5.51	36.71	3.50	31.30

	56.81		
+15		6.5	31.3
+25		8.5	33.3
+50		4.6	32.2
18		9.7	32.1
+25		6.6	30.2
+50 creekbed.		8.0	28.8
TP		70.2	29.79 on tree at 441.

13.36

+60	7.8	35.6
+70	9.2	34.2
9	11.5	31.9
+15	11.4	32.0
+20 edge of creek	9.1	34.3
+50	6.4	37.0
10	4.5	38.9
+35	4.2	39.2
+40	2.7	40.7
+50	6.5	36.9
+7.5	5.3	38.1
11	5.9	37.5
+10	6.4	37.0
+20	5.0	38.4
+50	4.9	38.5
12	2.7	40.7
T.P.	12.6	12.10

wash

3 Latch
10 Moore
10 Latch
Line between I and J from Alley to
34th St. in N^o 10-113

29

T.P.	9.57	73.37	63.83
T.P.	1.06	68.10	6.33 67.04
B. N ^o 45 Alley		0.1	67.7
+50		6.8	61.3
+75		10.5	57.6
		12.4	55.7
T.P.	0.60	55.83	12.87 55.23
+25		1.6	54.2
+50		5.0	50.8
T.P.	0.95	48.82	12.96 42.57
+80		3.2	40.6
2		4.0	39.5
+50		4.2	39.6
3		5.2	38.6
+40		5.8	38.0
+70		8.0	35.8
4		8.5	35.3

on top of board
of fence cut
at 11:30
H-I-82-33-

Profile Blaced
D. 1-6

13.82

5		9.5	34.3
+15	WL 33 ^d	9.5	34.3
+45		9.2	34.6
+75	EL 33 ^d	9.6	34.2
6		11.1	32.7
+40		11.5	32.3
7		12.9	31.4
TP	7.06	38.55	12.33
			31.49
+40		7.3	31.3
+57		9.3	29.3
+65		8.4	33.2
+80		{ 5.0	33.6
		{ 8.3	30.4
+85		10.4	28.2
8		10.9	27.7
+20		10.2	38.4
+30		11.5	27.1
+40		{ 9.7	28.9
		{ 5.8	32.8

38.55

30

+50		5.0	33.6
9		5.2	33.4
+25		3.8	34.8
+50		3.7	34.9
+75	Fence	3.4	35.2

3 Habel
10 Trowl
14 Thomas

Wire between J - K in
No. lanes Adde.

TP 798 75.02 67.04

Cr. of alley at head of tract 3.8 - 71.2

+38 11.0 64.0

TP 0.80 63.26 12.56 62.46

+50 5.8 57.5

TP 0.53 51.35 12.46 50.82

+65 1.9 49.5

+80 5.3 43.1

+95 13.0 38.4

TP 0.0 38.91 12.44 38.91

1 1.2 37.7

+30 3.3 35.6

2 4.4 34.5

3 4.2 34.7

4 5.6 33.3

5 7.0 31.9

+15 WL 33^d 7.4 31.5

Profile plotted
B-6

38.91

31

+15 6.9 32.0

+75 EL. 33^d 7.7 31.2

6 8.1 30.8

+30 9.4 29.5

7 9.1 29.8

TP 56.6 35.04 9.53 29.33

+80 5.6 29.4

+89 4.1 30.9

+93 3.5 26.5

8 10.6 24.4

+15 10.5 24.5

+30 { 7.0 28.0
5.2 29.8

+35 4.1 30.9

+65 4.8 30.2

9 4.2 30.8

+50 3.8 31.2

+75 3.4 31.6

3. Habel
14. Thord
10. Thord

Line between F and G from
32^d to 30th

				Miles in car of Fence G to 33 ^d
B77	7.04	58.28	81.24	
W.L. 32 ^d			4.4	83.9
+25			3.0	85.3
+50			1.1	87.2
T.P.	12.80	10.093	0.15	88.13
+75			12.0	88.9
1			10.2	90.7
+25			8.6	92.3
+50			4.9	96.0
+75			3.2	97.7
T.P.	11.84	112.46	0.31	100.62
2			11.2	101.3
+25			9.5	103.0
+50			7.5	105.0
+75			5.9	107.1
3			3.5	109.0
+25			1.3	111.2

Profile plotted
B.7

32

		112.46		
T.P.	12.93	125.29	0.10	112.36
+50			11.8	113.5
+75			9.1	116.2
A			7.9	120.9
+25			0.9	124.9
T.P.	12.51	137.98	0.12	125.17
+50			7.0	131.0
+75			2.7	135.3
T.P.	12.60	150.37	0.21	137.77
5			10.6	139.8
+25			7.8	143.6
+50			6.0	146.4
+75			4.9	145.6
6	EL 31 st		3.6	146.8
+30	CL 31 st		2.1	148.3
T.P.	12.41	162.23	0.55	149.82
+60	W.L. 31 st		11.4	158.8

16223

+85		10.4	151.8
7		7.2	155.0
+25		4.4	157.8
+50		5.7	156.5
+75		8.2	154.0
8		8.4	153.8
+25		6.8	155.4
+50		3.9	158.3
+75		1.9	162.3
9		0.1	162.1
TP	163	163+3	0.43
+25		0.2	163.2
+50		2.5	160.9
+75		5.0	158.4
10		1.8	161.6
+25		2.1	161.3
+50		2.3	161.1

16343

33

+75		1.9	161.5
11		2.5	160.9
+25		4.1	159.3
+50		5.6	157.8
+75		8.6	154.8
12		15.9	147.5
+10		15.9	147.5
+25		7.9	153.5
+50		7.7	155.7
+62 = FL. 30 th		2.1	160.3

3/14 Hatch
30. Thorne
Line between F and G from
32^d to 35th

BM	390	85.14	81.24	32 ^d G see P. 32
Wk 32 ^d		1.3	83.8	
+ 30	Cs.	1.9	83.2	
+ 50		2.7	82.4	
+ 55		5.1	80.0	
+ 60 - 0+10 EL.		5.5	79.6	
+ 35		6.9	78.2	
+ 50		6.7	78.4	
+ 75		4.7	80.4	
		5.1	80.0	
+ 25		7.3	77.8	
+ 40		9.3	75.8	
+ 50		13.0	72.1	
+ 60		13.6	71.5	
+ 65		11.5	73.6	
+ 75		12.0	73.1	
T.P.	163	73.76	1301	72.13

Profile plotted
 P. 7

73.76

2		6.5	66.3
+ 0.5		8.3	65.5
+ 20		10.8	63.0
+ 25		9.4	64.4
+ 50		9.1	64.7
+ 75		9.7	64.1
+ 81 = 12+72 on line in corner East of 32 ^d Street		9.9	63.9
3		7.6	66.2
T.P.	11.22	84.52	846
+ 25		6.9	77.6
+ 50		4.6	79.9
+ 75		5.3	79.2
4		4.5	80.0
+ 25		5.5	79.0
+ 50		6.2	78.3
+ 75		5.9	78.6
5		6.6	77.9

84.52

+25 6.4 78.1

+50 6.7 77.8

+75 7.2 77.3

6 WI-32² 6.9 77.6

+20 6.5 78.0

+30 7.8 76.7

+60 WI-133² 8.0 76.5

7 8.2 76.3

TP 2.09 77.46 9.15 75.37

+17 60.2 77.3

Reservoir 9.3 68.2

+45 9.9 67.6

0.2 77.1

+55 1.2 76.3

+70 6.4 71.1

8 7.6 69.9

+50 9.2 68.3

9 10.6 66.9

+50 13.2 64.3

77.46

35

TP 0.36 64.81 13.01 64.45

10 2.7 62.1

+59 3.9 60.9

+65 6.1 58.7

+80 10.9 53.9

TP 0.84 52.19 13.01 51.35

+90 5.6 46.6

11 7.7 44.5

+10 8.8 43.4

TP 2.81 47.49 7.51 44.68

+50 5.7 41.8

12 5.0 42.1

TP 5.94 48.03 5.40 42.09

13 5.8 42.2

14 5.7 42.3

15 4.3 43.7

16 4.1 43.9

480.3

17	3.2	44.8
18	3.3	44.7
19	3.4	44.6
+ 21	Fence near creek	27 45.3

³/₁₅ Hated
to Thorne Brooklin His following Cañon

36

RDW	278	41.04	38.26
Cr. 33 ^d - I = 0+00		5.2	35.80
+ 30 = W.L. 33		4.8	36.2
1		3.7	37.3
2		2.5	38.5
3		0.4	40.6
TR	1303	53.60	0.47 40.57
+ 30		12.0	41.6
+ 40		13.1	40.5
		11.9	41.7
+ 58	× 62°00' R	11.1	42.5
+ 90		10.6	43.0
+ 95		12.3	41.3
4		12.3	41.3
+ 50		11.2	42.4
+ 80		11.0	42.6
5		9.1	44.5
+ 10		8.1	45.5

Spl in Fence Cor
SW N - 82^d

Profile plotted

8

8

		53.60		
+50			7.6	46.0
+90			6.6	47.0
6			7.9	45.7
+10			7.9	45.7
+20			6.0	47.6
+50			5.8	47.8
+95			4.9	49.2
7			2.0	51.6
TR	59.7	59.27	0.20	53.40
+10			2.1	57.3
+20			1.7	57.7
+29	< 19°20' R.		3.9	53.5
+35			5.8	50.6
+60			9.9	49.5
+80			8.7	50.7
8			9.0	51.4
+25			7.5	51.9

		59.37		37
+50			8.5	50.9
+60			7.3	52.1
+90	Sta 4 line bet. G-H		6.5	52.9
9			6.2	53.2
+50			4.7	54.7
10			3.1	56.2
+15			3.4	56.0
+25			5.1	54.3
+35			2.7	56.7
+50			1.4	58.0
TR	13.00	71.37	1.00	58.37
11			11.4	60.0
+50			10.2	61.2
12			8.6	62.8
+50			7.8	63.6
+72	2481 in line bet. F-G		7.5	63.9
13			6.5	64.9

		71.37		
+50			4.5	66.9
14			3.4	68.0
+40			2.6	68.8
TP	9.59	80.81	0.15	71.22
+53			5.3	75.5
+67	24 ³⁰ R		4.4	76.4
+80			5.5	75.3
+90			12.6	68.2
15			11.5	69.3
+50			9.9	70.9
16			8.8	72.0
+50			8.9	71.9
+75			6.2	74.6
17			5.7	75.1
+50			4.7	76.1
18			3.9	76.9
+40			4.3	76.5

		80.81		
+50			1.7	79.1
TP	12.90	92.65	1.06	79.75
+70			11.3	81.4
+90			15.0	77.7
19			12.8	79.9
+50			10.9	81.8
+75			9.2	83.5
+55			6.5	86.2
20			5.4	87.3
+50			6.4	86.3
21			6.4	86.3
+50			5.2	87.5
22			3.6	89.1
+25			1.0	91.7
+50			1.3	91.4
+56	20 ³⁰ L		2.6	90.1
TP	12.87	104.20	1.32	91.33

	104.20		
+65	13.8	90.4	
23	12.7	91.5	
+35	11.9	92.3	
+40	12.8	91.4	
+50	11.2	93.0	
24	9.6	94.6	
+50	7.3	96.9	
25	6.5	97.7	
+35	5.0	96.2	
+35	5.9	98.3	
+50	7.3	96.9	
+60	5.3	98.9	
26	4.0	100.2	
+20	5.5	98.7	
+36 < 19 ⁰ / ₃₀ L	3.6	100.6	
+50	2.9	101.3	
27	1.5	102.7	

	104.20		
TP	12.95	115.69	1.46
+40			13.5
+15			12.7
+50			11.3
28			9.8
+50			9.2
+75			9.6
29			8.0
+50			6.5
30			4.8
+54			5.0
+65			5.9
+75			4.0
31			2.9
+15			3.1
+20			3.8
+50			3.0

		115.69		
+70			1.7	114.0
TP	12.93	128.09	0.53	115.16
32			12.5	115.6
+50			11.2	116.9
+75			9.7	118.4
492 L 2036R			9.6	118.5
33			10.9	118.1
+30			8.6	119.5
+50			7.4	120.7
34			5.8	122.3
+20			6.4	121.7
+50			8.4	119.7
+60			6.2	121.9
+80			4.9	123.2
35			3.4	124.7
TP	11.98	139.73	1.34	127.75
+50			12.2	127.5

		139.73		40
+83 L 2100L			11.2	128.5
36			12.1	127.6
+35			10.9	128.8
+50			12.5	127.2
+65			9.0	130.7
37			7.9	131.8
+25			6.6	133.1
+50			6.1	133.6
38			5.3	134.4
+50			3.6	136.1
+35			3.6	136.1
39			4.3	135.4
+35			1.9	137.8
+50			1.2	138.5
TP	12.92	152.35	0.30	139.43
40			12.1	140.3
+50			10.1	142.0

152.35

41		8.8	143.6	
+50		6.9	145.5	
+85		6.4	146.0	
42		5.7	146.7	
+50		3.2	149.2	
+69	< 19304	2.4	150.0	
43		1.5	150.8	
+50		1.3	151.0	
TP	11.77	162.78	0.34	152.01
44		10.9	152.9	
+50		9.7	154.1	
+75		11.2	152.6	
45		9.1	154.7	
+50		5.7	158.1	
+75		4.7	159.1	
46		5.9	159.9	
+05		6.9	156.9	

Propagated B-8

162.75

41

+20		4.8	159.0
+50		3.5	160.3
47		1.6	162.2
+50		0.7	163.1
+65		2.0	161.8
+75		0.3	162.5
TP		0.36	163.42

The image shows an open notebook with two facing pages. The pages are cream-colored and feature light green horizontal ruling. Vertical red lines create margins on both sides of each page. The right page is numbered '42' in the top right corner. The notebook is placed on a white surface, and the background to the left is dark.

$\frac{3}{16}$ Lath
 $\frac{10}{110}$ Moore
 Thomas

Line between E⁹⁴W¹ from
 32^d to sewer bet 29^d 30^d

45

T.P. 12.55 84.07 7122

12.30 96.28 0.09 83.95

Cr 32^d St up Cast Sewer pipe 3.40 90.9

ground 6.0 90.3

West line = 0+00 7.9 88.4

+25 4.7 91.6

+50 0.8 95.5

T.P. 12.74 108.83 0.19 96.09

+75 4.3 104.5

1.2 107.6

T.P. 13.02 121.25 0.62 108.21

+25 12.1 109.1

+50 10.6 110.6

+75 9.1 112.1

2 6.9 114.3

+25 4.4 116.8

T.P. 12.76 133.85 0.16 121.09

		133.85		
+50			12.8	121.0
+75			9.0	124.8
3			4.6	129.2
TP	12.89	146.19	0.55	133.30
+25			10.9	135.8
+50			3.0	143.2
TP	12.66	146.27	0.24	133.61
+75			9.0	137.3
A			1.6	144.7
TP	13.00	159.17	0.10	146.17
+25			9.6	149.6
+50			4.3	154.9
+75			0.7	158.5
TP	7.10	166.14	0.13	159.07
5			5.7	160.4
+25			4.6	161.5
+50			4.6	161.5

		166.14		
+75			5.2	160.9
6- E1 31 st			6.0	160.1
+30 Cr			7.4	158.7
+60 V/L			8.4	157.7
7			10.0	156.1
+50			6.3	159.8
8			1.2	164.9
TP	7.38	173.10	0.42	165.72
+50			6.1	167.0
+75			4.7	168.4
9			5.7	167.4
+50			5.4	167.7
10			5.5	167.6
+50			5.5	167.6
11			6.0	167.1
+50			6.6	166.5
12			7.2	165.9

		173.10		
+50			9.8	163.3
+60 EL 30 th			8.8	164.3
+90 Cr			8.7	164.4
13			8.8	164.3
+20 WL			8.2	164.9
+25			7.0	166.1
+50			6.9	166.2
14			7.2	165.9
+50			8.2	164.9
15			9.6	163.5
TP	1.11	162.31	9.90	163.20
+50			4.2	160.1
+75			9.7	154.6
TP	0.24	152.75	12.30	152.01
16			2.0	150.2
+25			5.3	146.9
+50			10.0	142.2

		152.25		
TP	0.47	140.66	12.00	140.19
+75			5.6	135.0
17			12.2	128.5
TP	0.96	128.94	12.68	127.98
+25			5.5	123.4
+50			11.0	117.9
+75			12.8	116.1
+90			14.3	114.6
18			12.7	116.2
+12 Man Hole			12.3	116.6

3 Hatch
17 Mary
10 Thomas

Line between 32d & 33d = 1/2 F from

TP	2.89	98.48	96.09
Wb. 32d = 0100		10.1	88.4
+50		3.9	94.6
+60 = EL 32d		4.0	94.5
+75		2.5	96.0
1		2.5	96.0
+50		4.3	94.2
2		5.7	92.8
+50		9.3	89.2
+75		9.5	88.7
3		12.6	85.9
TP	0.85	86.45	12.88
+25		5.8	80.6
+50		13.2	73.2
+65 = 16+63 on line E of 32d in Cañon		14.0	72.4
+75		13.3	73.1
1		12.5	73.9

86.45

48

+25		7.7	78.7
+50		4.2	82.2
+75		1.3	85.1
TP	7.15	93.38	0.22
5		6.2	87.2
+50		5.8	87.6
6		5.5	87.9
+50		4.5	88.9
+60 = Wb. 33d		3.5	89.9
TP	15.5	94.00	0.87
			92.51

³/₁₇ Hater line on Q of Lemon Grove Blvd
 40 thmas from 33^d E

49

		94.09		
0+00 = EL. 33 ^d		1.5	92.6	
+50		0.9	93.2	
1		0.7	93.4	
+50		1.1	93.0	
+75		1.5	92.6	
2		2.8	91.3	
+50		6.0	88.1	
3		9.1	85.0	
+50		12.5	81.6	
TP	0.24	81.63	12.70	81.39
4		3.6	78.0	
+50		7.1	74.5	
5		10.0	71.6	
+50		12.7	68.9	
TP	0.64	69.47	12.80	68.83
6	W/L 34 th	3.4	66.1	
+30	Cr.	4.5	65.0	

6947

+60	EL 34 th	5.5	64.0	
7		7.0	62.5	
+50		9.1	60.4	
8		10.6	58.9	
+50		11.7	57.8	
9		12.2	57.3	
TP	0.93	58.13	12.27	57.20
+50		2.3	55.8	
10		4.1	54.0	
+50		5.0	53.1	
"		5.8	52.3	
+50		5.9	52.2	
12		5.6	52.5	
+60	W/L 35 th	5.1	53.0	
+90	Cr.	4.8	53.3	
13		4.6	53.5	
+20	EL.	4.5	53.6	

5813

+70	4.3	53.8
10	4.1	54.0
+20 Bridge-	4.0	54.1

$\frac{3}{12}$ Kated
 10 Duvoy
 Thomas from 33^d East

50

TP	11.40	103.91		92.51
0+00 =	East line 33 ^d		8.6	95.3
+50			7.7	96.2
1			6.1	97.8
+50			4.4	99.5
2			2.7	101.2
+50			3.5	100.4
3			4.8	99.1
+50			7.3	96.6
4			10.8	93.1
TP	0.28	91.95	12.74	91.17
+50			5.2	86.2
5			8.0	83.4
+50			11.2	80.2
6	WL 34 ^d		12.5	78.9
TP	0.25	79.40	12.30	79.15
+30			1.4	78.0

		77.40		
+60 WL 34		30	76.4	
7		5.1	74.3	
+50		7.0	72.4	
8		8.8	70.6	
+50		10.1	69.3	
9		11.2	68.2	
+50		12.0	67.4	
10		13.0	66.4	
TR	175	67.80	12.85	66.55
+50		2.8	65.0	
11		4.3	63.5	
+50		5.7	62.1	
12		7.9	59.9	
TR	307	57.10	12.77	55.03
+40		3.3	53.8	
+60 WL 35 th		4.0	53.1	
+90 C		4.6	52.5	

51

	5710		
13		4.8	52.3
+20 EL		4.9	52.2
+50		5.6	51.5
14		6.0	51.1
+25		5.1	52.0
+50		7.7	49.4
+75		6.8	50.3
15		5.9	51.2
+0.5 Creek bed		12.1	35.0

3 Mateo
17 Snow
10 Thomas
Line between D-E
38° West

TP	604	98.55	92.51
0+00 = WL 33 ^d		0.2	97.4
+50		1.5	97.1
1		2.7	95.9
+75		4.5	94.1
+50		8.0	90.6
+99 = 20+50m line East of 325 m Cañon		12.1	86.5
2		12.4	86.2
+25		14.1	84.5
+50		14.0	84.6
+75		12.1	86.5
3		3.8	94.6
+10		0.2	98.4
TP	1299	110.84	070 97.85
+25		10.8	100.0
+50		9.6	101.2
+75		9.7	101.1

3
18
10

110.84

52

4			8.2	102.6
+75			6.2	104.6
+50			4.5	106.3
+75			3.0	107.8
5			1.1	109.7
TP	1270	123.26	008	110.76
+25			10.9	112.6
+50			6.0	117.5
+80			1.5	122.0
TP	1270	135.96	020	123.26
6 = FL 32 ^d			10.3	125.7
+30 Cr.			4.0	132.0
TP	1259	148.31	024	135.72
+60 WL			10.4	137.9
+80			4.9	143.4
TP	1271	160.37	065	147.66
7			11.2	149.2

		160.37		
+25			6.2	154.21
+50			2.9	157.5
TP	12.64	172.47	0.54	159.83
+75			11.9	160.6
8			7.7	164.8
+25			13.1	169.4
+50			2.4	170.1
+75			4.0	168.5
TP	0.76	164.13	9.10	163.37
9			1.3	162.8
+25			6.7	159.4
+50			11.6	152.5
TP	0.28	151.39	13.02	151.11
+75			4.5	146.9
10			10.1	141.3
+25			13.1	138.3
TP	0.77	139.06	13.10	138.29

		139.06			
+50				9.1	130.0
TP	0.23	126.29	13.00	126.06	
+75				3.9	122.4
+90				10.1	116.2
11				7.5	118.8
+25				8.1	118.2
+45				11.4	114.9
+50				9.5	116.8
+75				2.5	123.8
TP	12.49	138.52	0.24	126.55	
12				7.6	130.9
TP	12.18	150.40	0.32	138.22	
+30				12.9	139.5
+60 EL 31 st				6.6	142.8
TP	13.02	163.20	0.22	150.18	
+90				9.5	153.7
13				7.6	155.6

		163.20		
+20	WL		4.0	159.2
TP	12.82	175.75	0.27	162.93
+50			8.0	167.7
+75			0.5	175.2
TP	12.63	188.02	0.36	175.39
10			8.9	179.1
+25			6.6	181.6
+50			4.0	184.0
15			0.6	187.4
TP	5.87	196.63	0.26	187.76
+25			5.6	182.6
+50			3.2	184.8
+78	Man hole		2.2	185.8

54

$\frac{3}{26}$ Water
10 Thomas

Line between C-D from
30° East

TP	13.01	123.77		110.76
	13.97	136.59	0.25	123.52
	12.99	149.42	0.16	136.43
	12.32	161.33	0.41	149.51
TP at 30° ^{11.73} and 20°		171.19	1.87	139.46
WL 20° ^{11.73} 20+00			6.6	164.6
+25			9.9	161.2
+50			14.6	136.6
+75			15.7	155.5
1			14.4	156.8
+25			13.0	158.2
+50			11.5	159.4
+75			12.7	158.5
TP	0.11	153.51	12.79	158.40
2			2.2	156.3
+25			3.0	153.5
+50			8.1	150.4
TP	0.07	145.77	12.81	145.70

Continued
on P. 59

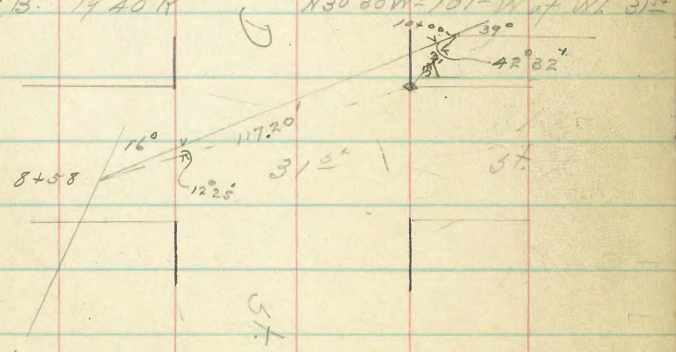
Alignment for Levels on P55

3 Hatch
31 Pavers
10 Thomas

Line in Coast from 32^d between E-F
To 4th between 30-31

55

0+00 = Pt on	♀ 32 ^d in Alley between D-E	
0+78	33°10' R	N72°15' W
3+50	22°30' R	N49°45' W
5+77	27°50' L	N77°30' W
7+50	19°30' R	N58°00' W
8+58	16°00' R	N42°00' W
10+00	39°00' R	N3°00' W
13+35	♀ Ct. 12°30' L	N15°30' W
15+25	♀ Alley 34°30' L	N50°10' W
17+58	♀ B. 19°40' R	N30°30' W = 101' W of Wk 31 ^d



31 ^d B.	278	208.28		205.50
20+50		9.0		199.3
20+25		13.2		195.1
TP	0.39	195.45	13.22	195.06
20		1.8		193.6
19+75		4.3		191.1
19+50		6.0		189.4
19+25		6.5		188.9
19		6.9		189.0
18+75		8.3		187.1
18+50		10.2		185.2
18+35		10.4		185.0
18+35		7.0		188.4
TP	12.71	208.02	0.14	195.31
18		3.4		204.6
17+75		4.1		203.9
17+58 < 19°40' R		4.3		202.7

20802

17+25		4.9	203.1
17+13		4.6	203.4
17		11.8	196.2
T.P.	0.0	19542	12.60 195.42
16+75		13.0	182.4
T.P.	0.11	183.05	12.98 182.94
16+50		9.4	173.6
16+25		11.1	171.9
T.P.	1.20	171.19	13.06 169.99
16		3.2	168.0
15+75		5.6	165.6
15+50		7.2	164.0
15+25 L	3430L	8.3	162.9
15+10		9.9	161.3
15		9.1	162.1
T.P.	3.84	16530	9.73 161.46
14+75		2.9	162.4

16530

56

14+50		6.3	159.0
14+25		9.6	155.7
14		10.6	154.7
13+95		10.3	155.0
T.P.	6.32	170.92	0.70 164.60
13+75		1.5	169.4
13+50		1.9	169.0
13+35 L	1230L	1.7	169.2
13		2.4	168.5
12+95		3.5	167.4
T.P.	0.0	157.95	12.97 157.95
12+75		2.2	155.7
12+50		11.2	146.7
12+25		12.6	145.3
T.P.	3.55	148.65	12.85 145.10
12+00		4.5	144.1
11+75		2.6	146.0
11+50		5.5	143.1

	148.65			
11+25		8.6	140.0	
11		9.1	139.5	
10+75		10.7	137.9	
10+50		10.2	138.4	
10+25		12.9	135.7	
10+00 L 39°00' R		13.2	135.4	
T.P.	2.40	135.85	132.0	135.25
9+75		0.6	135.2	
9+50		0.0	135.8	
9+25		2.9	132.9	
9		3.1	130.7	
8+75		4.9	130.9	
8+50 L 16°00' R		6.3	129.5	
8+50		10.1	125.7	
T.P.	2.30	128.21	9.94	125.91
8+25		2.1	125.1	
8		1.8	126.4	

	128.21			
7+75		7.2	121.0	
7+50 L 19°20' R		9.9	118.3	
7+25		9.0	119.2	
7		11.8	116.4	
6+75		13.2	115.0	
T.P.	2.38	117.72	12.87	115.34
6+75 = 11+46 Alley line		2.7	115.0	
6+50		3.4	114.3	
6+25		1.6	116.1	
6		2.2	115.5	
5+77 L 27°50' L		3.7	114.0	
5+50		4.1	112.6	
5+25		6.4	111.3	
5		8.6	109.1	
4+82		9.4	108.3	
4+75		7.2	110.5	
4+65		5.4	112.3	

	117.72			
4+50		9.2	108.5	
4+25		11.6	106.1	
4		12.7	105.0	
TP	4.09	109.15	12.66	105.06
3+75		6.7	102.4	
3+50 L 22'30" R		4.9	104.2	
3+25		9.0	100.1	
3		8.9	100.2	
2+75		11.1	98.0	
2+50		11.8	98.3	
2+25		11.0	98.1	
2		13.2	95.9	
1+75		11.7	97.4	
1+50		9.1	100.0	
1+25		6.0	103.1	
1+20		4.9	104.2	
1		10.1	99.0	

	109.15			
TP	0.94	13.05	96.10	96.09
0+73 L 33'0" R		3.0	106.1	

3. Hotel
51. 10
10 Thomas.

Continued from P 54

		145.77		
+75			1.3	144.5
3			10.2	135.6
T.P	0.25	133.17	12.85	122.92
+25			9.4	123.8
T.P	0.03	120.28	12.92	120.25
+50			6.8	113.5
+75			12.6	107.7
T.P	2.04	109.89	12.83	107.45
4			7.5	102.4
+25			10.4	99.5
+50 = 24+47	Caroline		13.2	96.4
+75			13.8	96.1
5			14.2	95.7
+25			12.9	99.5
+50			1.3	108.6
T.P	10.85	120.35	2.39	109.50
+75			9.4	110.9

120.35

59

6			9.5	110.8
+30	φ 38d		10.3	110.0
+60			10.5	109.8
7			10.6	109.7
+50			10.2	110.1
8			9.5	111.8
+25			5.9	114.4
+50			5.2	115.1
+75			7.5	112.8
9			7.7	112.6
+50			5.6	114.7
10			6.7	113.6
+50			6.8	113.5
11			8.1	112.2
+50			7.4	112.9
12			8.1	112.2
			9.4	110.9
T.P	0.15	111.04	9.46	110.89

111.04

+90			23	108.7
13			2.8	108.2
+20			3.0	108.0
+50			2.5	108.5
14			3.8	107.2
+50			9.0	102.0
15			10.2	100.8
+50			13.0	98.0
TP	1.58	99.92	12.70	98.34
16			6.2	93.7
+50			9.9	90.0
17			12.0	87.9
TP	0.09	86.94	13.07	86.85
+25			0.6	86.3
+30			1.6	85.3
+35			5.7	81.2
+40			6.8	80.1

86.94

60

+50			12.8	74.1
TP	0.36	74.50	12.80	74.14
+75			7.3	67.2
+90			13.0	61.5
TP	1.69	63.27	12.92	61.58
18			2.5	60.5
+50			3.8	59.5
19			4.6	58.7
+50	King of Kings 35 th St.		6.0	57.3
TP	1.65	57.66	7.26	56.01

31 Hatch
10 report
Thomson

Line between B & C from 32nd
East.

TP 12.46 172.92 159.96

0+00 = El. 35^d 6.9 162.0

TP 0.26 161.84 11.34 161.58

+25 3.7 158.1

+50 10.4 151.4

TP 11.8 150.31 12.71 149.13

+75 5.1 145.2

1 10.6 139.7

TP 2.38 139.72 12.97 137.34

+25 4.0 135.7

+50 8.2 131.5

+75 11.9 127.8

TP 11.2 128.40 12.44 127.28

2 2.1 126.3

+25 3.1 125.3

+50 4.1 124.3

+75 7.6 120.8

128.40

TP 2.90 118.57 12.73 115.67

3 4.5 114.1

+25 10.8 107.8

+49 = 28+21 Green line 11.2 107.4

+75 10.5 108.1

4 5.5 113.1

+25 3.7 114.9

+50 4.2 114.4

+75 7.7 110.8

+85 9.1 109.5

5 4.3 114.3

TP 12.44 130.45 0.56 118.01

+25 11.6 118.8

+50 4.5 125.9

TP 10.98 141.19 0.24 130.21

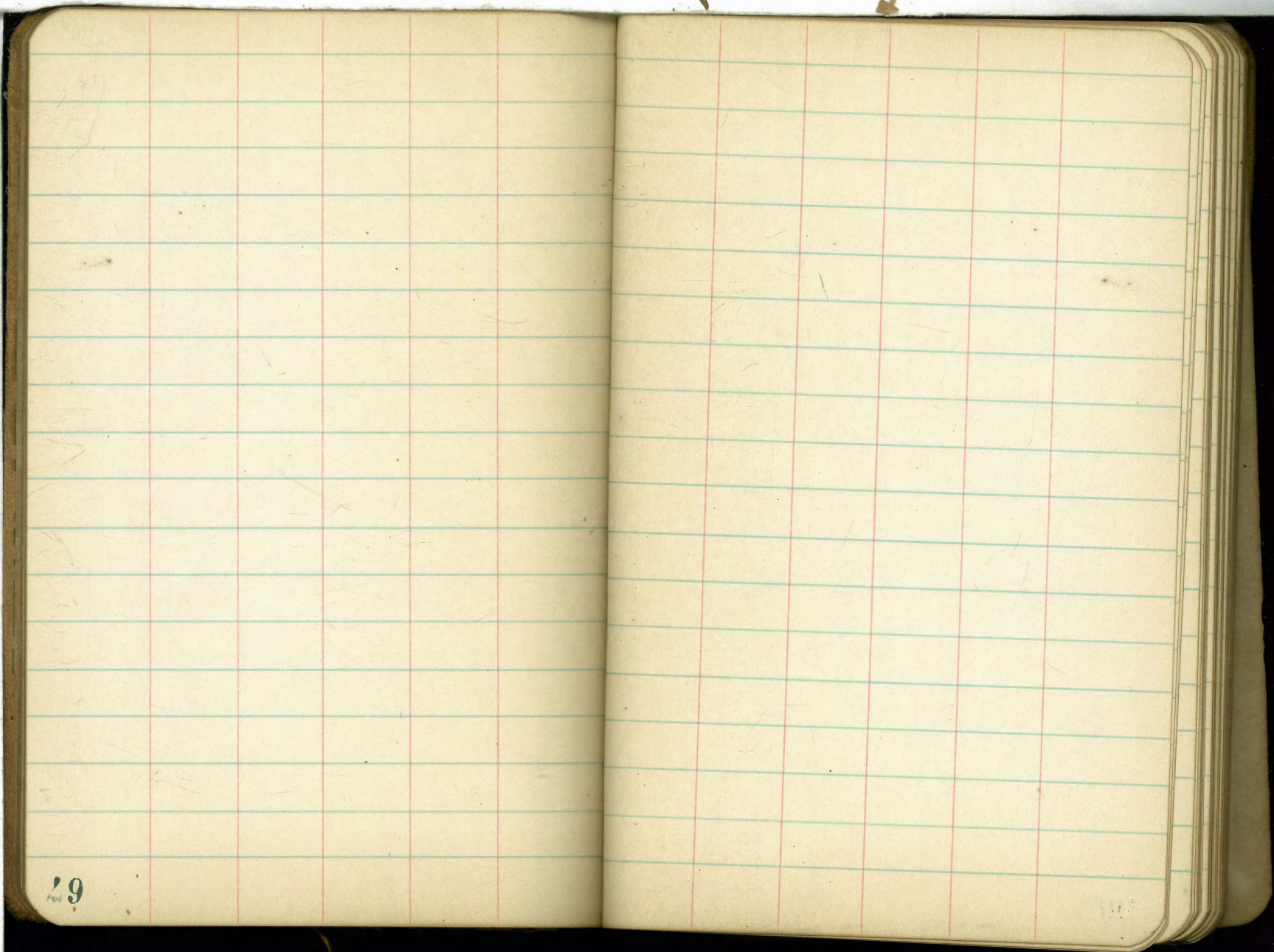
+75 9.8 131.4

6 5.4 135.8

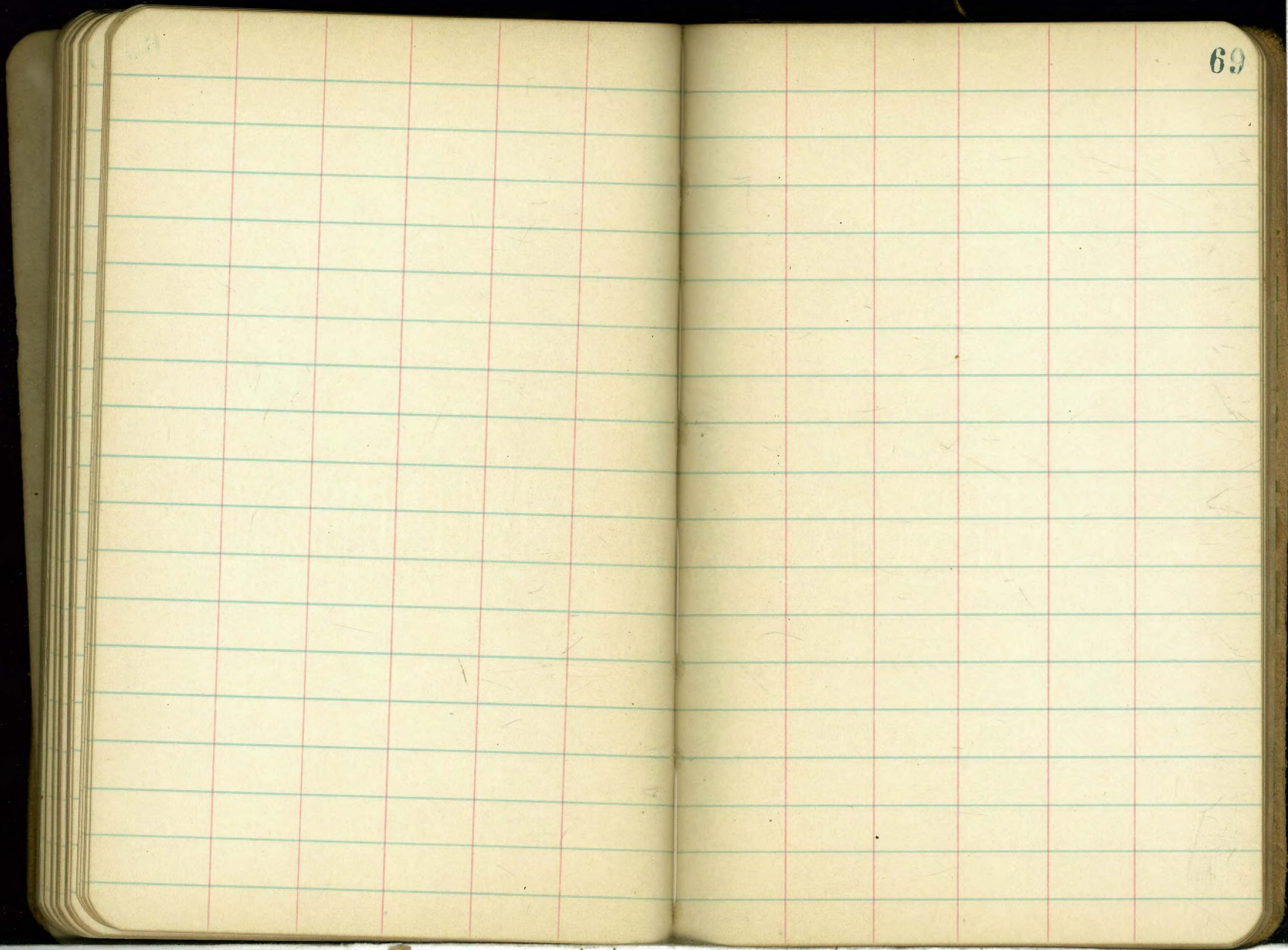
61

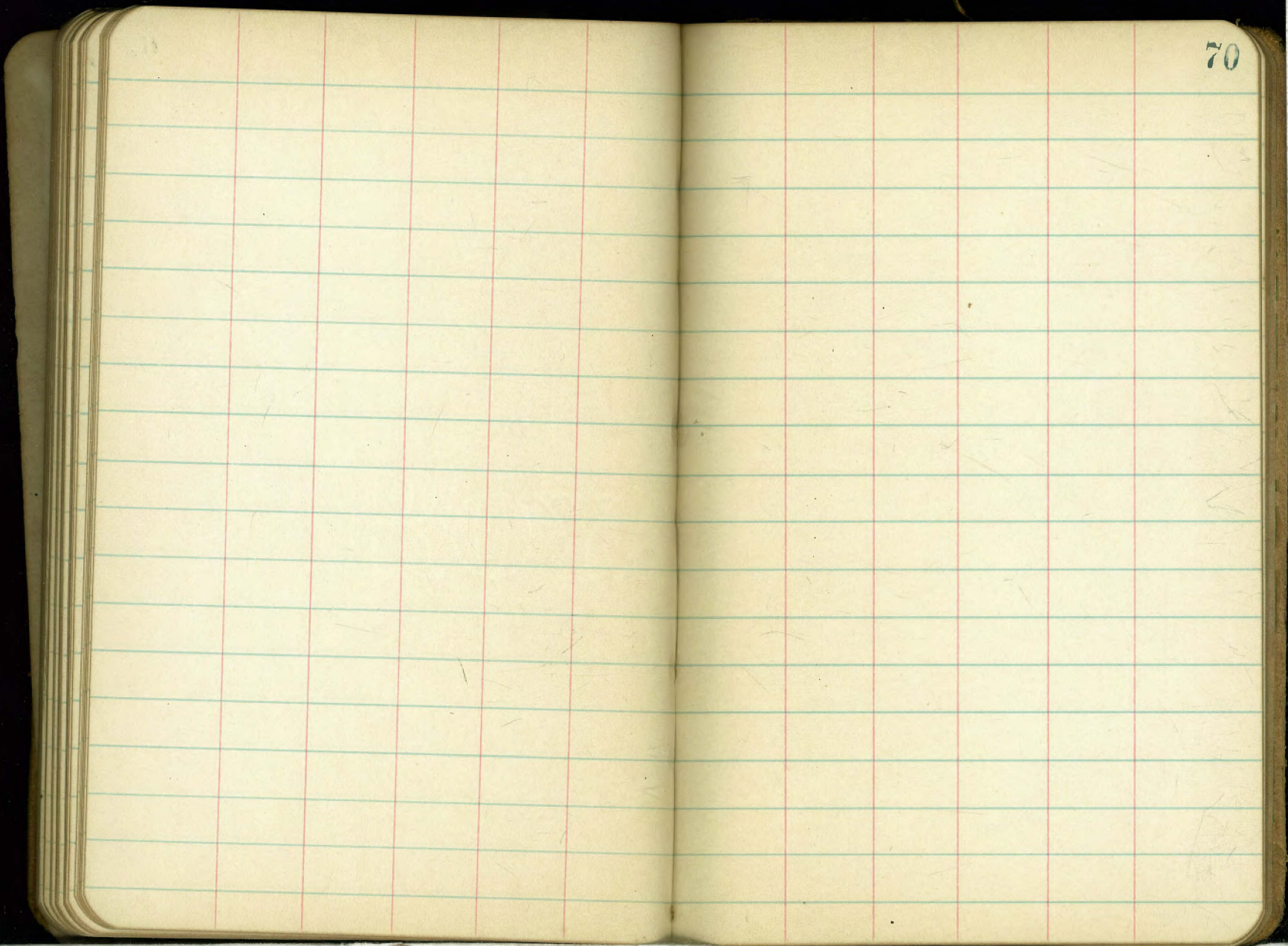
	141.19			
+30		3.4	137.8	
+60		1.7	139.5	
TP	11.20	157.78	0.61	140.58
7		8.9	142.9	
+50		5.0	136.8	
8		0.0	151.8	
TP	13.90	164.44	0.34	151.44
+50		5.3	159.1	
9		0.5	162.9	
TP	8.83	173.06	0.21	164.23
+50		5.7	167.4	
10		3.5	169.6	
+50		4.2	168.9	
11		7.1	166.0	
+50		12.5	160.6	
TP		11.86	161.20	Fence Cor.

66



19







71

74

Net. 3 16th N W cor HA spk potegrid. 4.106

N 2 16th N E cor. brass plg. 12.52

+ 3.86 7.97 4.11

Net + "N"

3.87 4.1

+50

4.55 3.4

1

4.72 3.2

+50

4.54 3.4

2

4.42 3.5

+50

4.40 3.5

3+50

4.50 3.4

+50

4.30 3.6

4+50

4.25 3.7

+50

4.20 3.7

5+50

4.10 3.8

+50

4.05 3.9

inter. 16th

3.70 4.2

+50

5.65 4.3

1+50

6.70 1.2

Commence at Net. 14 N. Hence Cor. Net. 1. to 16th Hence 5. on 16th Thally 750000 E. on alkyl

1+50

7.30 0.6

2+50

8.10 -0.2

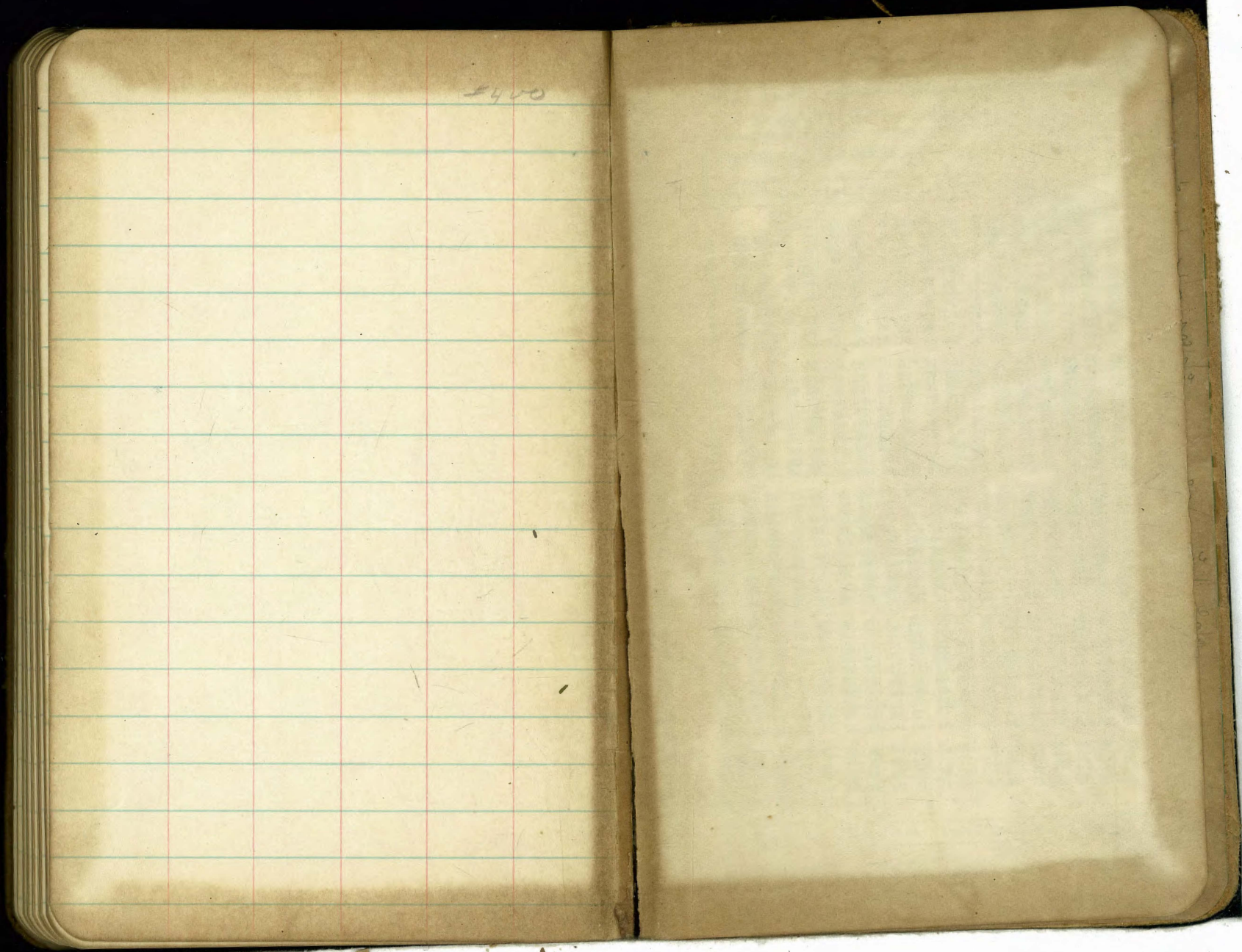
3+50

7.50 0.4

3+50

6.05 1.9

0.6
24
3.0
6
1.2
18



5400

Published by H. S. CROCKER COMPANY, Stationers, Drawing Materials, Mathematical Instruments, etc., San Francisco.

TRAVERSE TABLE FOR TRANSIT BOOK.
From 1° to 90° for a distance of 100.

Degrees.	DEGREES.		½ DEGREE.		¼ DEGREE.		¼ DEGREE.		Degrees.
	Lat.	Dep.	Lat.	Dep.	Lat.	Dep.	Lat.	Dep.	
0			100.00	0.44	100.00	0.87	99.99	1.31	89
1	99.98	1.75	99.98	2.18	99.97	2.62	99.95	3.05	88
2	99.94	3.49	99.92	3.93	99.91	4.36	99.88	4.80	87
3	99.86	5.23	99.84	5.07	99.81	6.10	99.79	6.54	86
4	99.76	6.98	99.73	7.41	99.69	7.85	99.66	8.28	85
5	99.62	8.72	99.58	9.15	99.54	9.58	99.50	10.02	84
6	99.45	10.45	99.41	10.89	99.36	11.32	99.31	11.75	83
7	99.25	12.19	99.20	12.62	99.14	13.05	99.09	13.49	82
8	99.03	13.92	98.97	14.35	98.90	14.78	98.84	15.21	81
9	98.77	15.64	98.70	16.07	98.63	16.50	98.56	16.93	80
10	98.48	17.36	98.40	17.79	98.33	18.22	98.25	18.65	79
11	98.16	19.08	98.08	19.51	97.99	19.94	97.90	20.36	78
12	97.81	20.79	97.72	21.22	97.63	21.64	97.53	22.07	77
13	97.44	22.50	97.34	22.92	97.24	23.34	97.13	23.77	76
14	97.03	24.19	96.92	24.62	96.81	25.04	96.70	25.46	75
15	96.59	25.88	96.48	26.30	96.36	26.72	96.25	27.14	74
16	96.13	27.56	96.00	27.98	95.88	28.40	95.76	28.82	73
17	95.63	29.24	95.50	29.65	95.37	30.07	95.24	30.49	72
18	95.11	30.90	94.97	31.32	94.83	31.73	94.69	32.14	71
19	94.55	32.56	94.41	32.97	94.26	33.38	94.12	33.79	70
20	93.97	34.20	93.82	34.61	93.67	35.02	93.51	35.43	69
21	93.36	35.84	93.20	36.24	93.04	36.65	92.88	37.06	68
22	92.72	37.46	92.55	37.86	92.39	38.27	92.22	38.67	67
23	92.05	39.07	91.88	39.47	91.71	39.87	91.53	40.27	66
24	91.35	40.67	91.18	41.07	91.00	41.47	90.81	41.87	65
25	90.63	42.26	90.45	42.66	90.26	43.05	90.07	43.44	64
26	89.88	43.84	89.69	44.23	89.49	44.62	89.30	45.01	63
27	89.10	45.40	88.90	45.79	88.70	46.17	88.50	46.56	62
28	88.29	46.95	88.09	47.33	87.88	47.72	87.67	48.10	61
29	87.46	48.48	87.25	48.86	87.04	49.24	86.82	49.62	60
30	86.60	50.00	86.38	50.38	86.16	50.75	85.94	51.13	59
31	85.72	51.50	85.49	51.88	85.26	52.25	85.04	52.62	58
32	84.80	52.99	84.57	53.36	84.34	53.73	84.10	54.10	57
33	83.87	54.46	83.63	54.83	83.39	55.19	83.15	55.56	56
34	82.90	55.92	82.66	56.28	82.41	56.64	82.16	57.00	55
35	81.92	57.36	81.66	57.71	81.41	58.07	81.16	58.42	54
36	80.90	58.78	80.64	59.13	80.39	59.48	80.13	59.83	53
37	79.86	60.18	79.60	60.53	79.34	60.88	79.07	61.22	52
38	78.80	61.57	78.53	61.91	78.26	62.25	77.99	62.59	51
39	77.71	62.93	77.44	63.27	77.16	63.61	76.88	63.94	50
40	76.60	64.28	76.32	64.61	76.04	64.94	75.76	65.28	49
41	75.47	65.61	75.18	65.93	74.90	66.26	74.61	66.59	48
42	74.31	66.91	74.02	67.24	73.73	67.56	73.43	67.88	47
43	73.14	68.20	72.84	68.52	72.54	68.84	72.24	69.15	46
44	71.93	69.47	71.63	69.78	71.33	70.09	71.02	70.40	45
45	70.71	70.71							