

400

LEVEL

F.B. 398

Published by H. S. CROCKER COMPANY, Stationers, Drawing Materials, and Mathematical Instruments, San Francisco.

Table showing the difference of latitude and departure in running 80 chains at any course from 1 to 60 minutes.

MINUTES.	LKS.	MINUTES.	LKS.	MINUTES.	LKS.
1	2 $\frac{1}{2}$	21	49	41	95 $\frac{1}{2}$
2	4 $\frac{1}{2}$	22	51 $\frac{1}{2}$	42	98
3	6 $\frac{1}{2}$	23	53 $\frac{1}{2}$	43	100 $\frac{1}{2}$
4	8 $\frac{1}{2}$	24	56	44	102 $\frac{1}{2}$
5	11 $\frac{1}{2}$	25	58 $\frac{1}{2}$	45	105
6	14 $\frac{1}{2}$	26	60 $\frac{1}{2}$	46	107 $\frac{1}{2}$
7	16 $\frac{1}{2}$	27	63	47	109 $\frac{1}{2}$
8	18 $\frac{1}{2}$	28	65 $\frac{1}{2}$	48	112
9	21	29	67 $\frac{1}{2}$	49	114 $\frac{1}{2}$
10	23 $\frac{1}{2}$	30	70	50	116 $\frac{1}{2}$
11	25 $\frac{1}{2}$	31	72 $\frac{1}{2}$	51	119
12	28	32	74 $\frac{1}{2}$	52	121 $\frac{1}{2}$
13	30 $\frac{1}{2}$	33	77	53	123 $\frac{1}{2}$
14	32 $\frac{1}{2}$	34	79 $\frac{1}{2}$	54	126
15	35	35	81 $\frac{1}{2}$	55	128 $\frac{1}{2}$
16	37 $\frac{1}{2}$	36	84	56	130 $\frac{1}{2}$
17	39 $\frac{1}{2}$	37	86 $\frac{1}{2}$	57	133
18	42	38	88 $\frac{1}{2}$	58	135 $\frac{1}{2}$
19	44 $\frac{1}{2}$	39	91	59	137 $\frac{1}{2}$
20	46 $\frac{1}{2}$	40	93 $\frac{1}{2}$	60	140

TABLE FOR RUNNING ON SLOPES.

In the following table the first column shows the angle, the second the number of links to be added to a chain on the slopes, to make one chain, horizontal measurement.

ANGLE	COR. IN LINKS	ANGLE	COR. IN LINKS	ANGLE	COR. IN LINKS	ANGLE	COR. IN LINKS
0		0		0		0	
4	0.24	11	1.88	18	5.14	25	10.54
5	0.38	12	2.24	19	5.76	26	11.26
6	0.55	13	2.63	20	6.42	27	12.24
7	0.76	14	3.06	21	7.11	28	13.37
8	0.98	15	3.53	22	7.85	29	14.34
9	1.24	16	4.02	23	8.64	30	15.47
10	1.55	17	4.56	24	9.47	35	22.07



LEVEL BOOK

No. 400

Return to City Engineers Office
 City Hall, San Diego, Cal.



MANUFACTURED BY

A.S. Crocker & Co.

SAN FRANCISCO
 and
 SACRAMENTO

Arizona 5 + 1 section

3/10 1911
10/10 1911
10/10 1911

H. Cook Myrtle on E

282.26

E 2.2

W 7.8

" 7.6

" 6.9

" 6.3

W 5.8

W 4.0

H. 2 Myrtle on E

W 4.1

W 6.2

" 6.4

" 7.2

" 7.7

W 7.5

E 8.8

Center Myrtle on E

E	9.0
crk	8.3
"4	8.2
M	7.6
"4	7.0
crk	6.5
W	9.5

S 1/4 Myrtle on E

W	9.9
crk	7.0
"4	7.6
M	8.3
"4	8.7
crk	8.9
E	9.2

S. Curve on E

2

E	9.2
crk	9.0
"4	8.8
M	8.3
"4	7.8
crk	7.2
W	5.0

N. L. Myrtle on W

W	5.3
crk	7.9
"4	7.9
M	8.3
"4	8.9
crk	9.0
E	9.3

S. L. Myrtle on E

E	9.5
Col	9.0
"	8.9
M	8.5
"	7.9
Col	7.5
W	5.3

N. Col. Myrtle on W

W	5.5
Col	7.5
"	8.1
M	8.7
"	9.3
Col	9.2
E	9.8

N. " on W

E	10.0
Col	9.5
"	9.3
M	9.9
"	8.3
Col	7.7
W	5.5

Center on W

W	6.0
Col	7.3
"	8.9
M	9.2
"	9.7
Col	9.6
E	10.3

1.282.26

5 1/4 on W

F	10.9
crk	10.9
1/4	10.2
M	9.5
1/4	8.5
crk	7.9
W	6.2

3 crk on W

r	6.3
crk	8.0
1/4	8.5
M	9.7
1/4	10.4
crk	10.5
E	11.0

5.4 Myrtle on W

F	11.2
crk	10.7
1/4	10.7
M	9.5
1/4	8.6
crk	8.1
W	6.6

0+15 3 of 5.4 Myrtle on W

r	6.3
crk	8.6
1/4	9.0
M	10.0
1/4	11.1
crk	11.1
E	11.5

T.P. 7.86 277.85 12.27 269.99

277.25

170

E	2.1
Col	7.1
"A	7.1
M	5.9
"A	5.0
Col	4.4
W	2.7

1425

W	3.0
Col	4.7
"A	5.4
M	6.3
"A	7.3
Col	7.5
E	8.7

1450

5

E	2.9
Col	7.3
"A	7.6
M	6.7
"A	5.7
Col	5.3
W	3.9

1425

W	3.9
Col	5.5
"A	6.0
M	6.9
"A	7.7
Col	7.9
E	9.1

2100

E	9.1
crk	8.0
"	7.5
M	6.9
"	6.2
crk	6.0
W	4.3

2125

W	4.7
crk	6.1
"	6.4
M	7.1
"	8.0
crk	8.2
E	9.1

2150

E	7.4
crk	8.4
"	8.2
M	7.5
"	6.6
crk	6.3
W	5.0

2175

W	5.2
crk	6.6
"	7.0
M	7.6
"	8.4
crk	8.8
E	10.0

277.35-

310

7

E 10.1

col 8.8

1/4 8.4

M 8.0

1/4 7.2

col 6.9

W 5.5

3445⁵ from S.L. Myitkon E D 2186² from S.L. Myitkon W B.K.L.

W 5.6

col 6.9

1/4 7.2

M 7.7

1/4 8.5

col 8.6

E 10.2

1-30000 Arizona University To Park Line

" 60' wide 11.5 off of each side

" 5' 2021703

B.M. 20150143 Arizona

301.80

3/5/10
Dunkle
Shaw

Evans

0+50

8

B.M. 127 303.07

E 3.5 299²

cb 4.9 298⁷

" 4.6 298⁵

M 3.1 300⁰

" 2.5 300⁶

cb 2.3 300⁸

W 1.0 302¹

0+25

W 2.1 294⁰

+1 10.1 293⁰

+2 9.2 92⁹

cb 2.2 94⁹

" 5.9 97²

+1 4.3 96²

M 5.5⁰ 97⁶

" 4.7 98⁴

cb 4.5 98⁶

E 4.0 99¹

E 4.1 99⁰

cb 4.4 98⁷

" 4.5 98⁶

M 4.9 98²

" 4.6 98⁵

cb 5.0 98¹

+1 5.2 97⁹

W 10.3 92⁸

0+75

W 9.9 93²

+5 3.0 95¹

cb 5.6 97⁵

" 2.8 300²

+2 2.9 300⁷

+9 3.9 99²

M 4.2 98⁹

" 4.6 98⁵

cb 4.6 98⁵

E 4.4 98⁷

303.17

0485

F	3.0	300 ¹
ckh	3.3	98 ⁸
1/4	3.8	99 ³
M	3.5	99 ⁶
+12	3.0	300 ¹
1/4	4.5	98 ⁶
ckh	2.7	94 ⁷
W	9.9	98 ²

0495

W	11.0	92 ¹
ckh	9.1	94 ²
1/4	7.1	96 ⁰
+6	5.1	98 ⁰
M	5.3	97 ⁸
1/4	6.2	96 ⁹
ckh	6.3	96 ⁸
F	6.2	96 ²

1+0

F	6.6	96 ⁵
ckh	6.9	96 ²
1/4	6.9	96 ²
M	5.8	97 ³
+10	7.3	95 ⁸
1/4	9.0	94 ¹
ckh	10.0	93 ¹
+7	11.9	91 ²
+8	12.2	90 ²
W	12.4	90 ⁷

1+25

W	9.9	93 ²
8	10.6	92 ⁵
ckh	11.8	91 ³
+1	13.2	89 ²
1/4	13.2	89 ²
+11	9.5	93 ⁶
M	9.2	93 ²
1/4	8.2	94 ⁸
ckh	8.1	95 ⁰
8	7.7	95 ⁴

9

1450

303.07

E	8.5	94 ⁶
cb	8.5	94 ³
1A	8.8	94 ³
M	9.8	93 ³
+3	10.3	92 ⁸
+10	13.1	90 ⁰
+11	14.1	89 ⁰
1A	12.9	90 ³
cb	12.0	91 ¹
W	10.7	92 ⁴

1475

W	15.2	87 ⁹
+2	14.6	88 ⁵
cb	12.0	91 ¹
1A	11.3	91 ⁸
M	10.3	92 ⁸
1A	10.0	93 ¹
cb	10.0	93 ¹
E	9.3	93 ⁸

10

240

E	10.4	92 ⁷
cb	10.8	92 ³
1A	10.9	92 ³
M	11.1	92 ⁰
1A	12.0	91 ¹
cb	12.6	90 ⁵
W	14.8	88 ³

2+25

W	14.8	88 ⁶
+2	15.3	87 ⁸
+A	17.2	85 ⁹
+7	14.9	85 ⁷
cb	15.9	87 ²
1A	13.5	89 ⁶
M	12.0	91 ¹
1A	11.6	91 ⁵
cb	11.7	91 ²
F	11.3	91 ⁸

T.P. 307 293.76 12.38 290.69

2+49² - m. right man on E seabed 396 P17

E	2.7	91 ¹
crk	3.0	90 ⁸
1/4	3.1	90 ⁷
M	3.4	90 ⁴
+9	4.3	89 ⁵
1/4	7.2	86 ⁶
+2	8.4	85 ⁴
crk	8.4	85 ⁴
+2	7.6	86 ³
+6	5.2	88 ⁶
W	9.0	89 ⁸

n. curb on E

W	4.1	89 ⁷
+4	5.4	88 ⁴
+8	7.8	86 ³
crk	8.6	85 ²
+4	8.8	85 ⁰
1/4	7.9	85 ⁸
+7	4.4	89 ⁴
M	3.7	90 ¹
1/4	3.4	90 ⁴
crk	3.3	90 ⁵
E	2.9	90 ²

N 1/4

E	3.0	90 ⁸
crk	3.5	90 ³
1/4	3.5	90 ³
M	3.8	90 ⁰
+9	4.8	89 ⁰
1/4	2.3	85 ⁵
+1	9.0	84 ⁸
crk	8.8	85 ⁰
+1	8.0	85 ⁸
W	9.3	89 ⁵

Center

W	4.1	89 ⁷
+9	5.8	85 ⁰
crk	7.3	84 ⁵
+4	7.3	84 ⁵
1/4	5.1	85 ⁷
+7	5.0	88 ⁸
M	4.3	89 ⁵
1/4	3.8	90 ⁰
crk	3.8	90 ⁰
E	3.5	90 ³

5/4/17 E

E	3.9	89 ⁹
chw	4.6	89 ²
14	4.7	89 ¹
M	4.8	89 ⁰
+3	5.4	88 ⁴
14	5.9	85 ⁴
+3	9.6	84 ²
chw	9.6	84 ²
+3	9.2	84 ⁶
W	5.4	88 ⁴

3. curb on E

W	5.0	88 ⁸
+7	9.0	84 ⁸
+8	9.6	84 ²
chw	9.6	84 ²
+4	9.7	84 ²
14	8.9	84 ⁹
+9	5.5	88 ²
M	5.2	88 ⁶
14	4.7	88 ⁹
chw	4.7	89 ¹
E	4.1	89 ⁷

10.6. Wright man on W

E	4.1	89 ²
chw	4.7	89 ²
14	4.9	88 ⁹
M	5.2	88 ⁸
+6	5.5	88 ³
14	8.7	84 ⁹
+1	9.7	84 ⁴
chw	9.6	84 ²
+2	9.6	84 ²
+3	9.0	84 ⁸
W	5.0	88 ⁸

5.1. Wright man on E

W	6.0	87 ⁸
+7	8.8	85 ⁰
+8	9.9	83 ⁹
chw	9.9	83 ⁹
14	9.7	84 ¹
+10	5.9	87 ⁹
M	5.3	88 ⁵
14	5.2	88 ⁸
chw	5.0	88 ⁸
E	4.2	89 ⁶

N. 6016 on W

E	4.2	89 ⁴
ckh	5.0	88 ⁸
1/4	5.2	88 ⁶
M	5.0	88 ⁵
+5	5.9	87 ²
1/4	7.7	84 ¹
ckh	9.9	83 ²
+2	9.9	83 ²
+3	8.8	85 ⁰
W	6.6	87 ⁸

N 1/4 on W

W	6.6	87 ²
+7	8.9	84 ²
+8	9.7	84 ¹
ckh	10.0	83 ²
1/4	7.8	84 ⁰
+2	9.6	84 ²
+3	8.9	84 ³
+11	6.5	87 ²
M	5.7	88 ¹
1/4	5.9	88 ⁴
ckh	5.2	88 ⁶
E	4.5	89 ³

center on W

E	4.6	89 ²
ckh	5.5	88 ³
1/4	5.8	88 ⁰
M	5.8	88 ⁰
+7	6.6	87 ²
1/4	7.6	84 ²
+1	10.3	83 ⁵
ckh	10.2	83 ⁶
+5	10.1	83 ⁷
W	8.6	85 ²

S 1/4 on W

W	9.8	84 ⁰
ckh	10.1	83 ⁷
1/4	8.6	85 ²
+5	7.0	86 ⁸
M	6.2	87 ⁶
1/4	6.2	87 ⁶
ckh	5.9	87 ⁹
E	4.6	89 ²

S. curb on W

E	4.5	89 ³
erb	5.3	88 ⁰
14	6.1	87 ⁷
M	6.3	87 ⁵
14	7.9	86 ⁴
erb	7.9	84 ⁴
+6	11.2	82 ⁶
W	11.2	82 ⁶

S.L. Wightman on W

W	11.3	82 ⁵
cb	8.6	85 ⁰
14	7.5	86 ¹
M	6.7	87 ¹
14	6.7	87 ²
cb	6.7	87 ³
E	5.1	88 ³

0+75' S. of S.L. Wightman on E.

E	5.5	88 ³
cb	6.5	87 ³
14	7.1	86 ⁷
c	7.6	86 ³
14	9.2	84 ⁶
cb	10.0	83 ⁸
W	11.4	82 ⁴

1+00'

W	13.6	80 ⁴
cb	11.9	81 ⁹
14	11.3	82 ⁵
c	9.1	84 ⁷
14	7.6	86 ³
cb	7.0	86 ⁸
E	6.1	87 ⁷

	1+25	
E	6.4	87 ⁴
cb	7.1	86 ⁷
1/4	7.6	86 ²
c	10.1	83 ⁷
1/4	13.1	80 ⁷
cb	14.4	79 ⁴
cb 1	14.6	79 ²
+ 5	14.4	79 ⁴
W	12.5	81 ³

	1+50	
W	13.3	80 ⁵
cb	15.3	78 ⁵
+ 3	15.5	78 ³
1/4	14.9	78 ⁹
c	9.6	84 ²
1/4	8.1	85 ⁷
cb	7.5	86 ³
E	7.0	86 ⁸

	293.76	
T.P.	3.47	287.13
	10.10	283.66
1+75	1+75	
E	1.2	85 ⁹
cb	1.3	85 ⁸
1/4	1.6	85 ⁵
c	2.8	84 ³
1/4	5.9	81 ²
cb	7.9	79 ²
+ 5	9.5	77 ⁶
W	9.8	77 ³
	2+00	
W	7.6	79 ⁵
cb	5.8	81 ³
1/4	5.0	82 ¹
c	3.5	83 ⁶
1/4	2.2	84 ²
cb	2.0	85 ¹
E	1.8	85 ³

2+25

E	2.8	84 ³
cl	3.1	84 ⁰
1/4	3.3	83 ⁸
c	4.4	82 ⁷
1/4	5.4	81 ⁷
cl	5.7	81 ⁴
w	7.0	80 ¹

2+50

w	7.7	79 ⁴
cl	6.8	80 ³
1/4	6.4	80 ⁷
c	5.6	81 ⁵
1/4	4.6	82 ⁵
cl	4.3	82 ⁸
E	3.8	83 ³

2+75

E	4.7	82 ⁴
cl	5.2	81 ⁹
1/4	5.5	81 ⁶
c	6.6	80 ⁵
1/4	7.8	79 ³
cl	8.2	78 ⁹
w	8.9	78 ²

3+00

w	7.2	79 ⁹
cl	6.6	80 ⁵
1/4	6.2	80 ⁹
c	5.5	81 ⁶
1/4	4.6	82 ⁵
cl	4.4	82 ⁷
E	4.1	83 ⁰

3+25

E	3.0	84 ¹
crk	3.3	83 ⁸
"	3.5	83 ⁶
M	4.0	83 ¹
"	4.7	82 ⁸
crk	5.0	82 ¹
W	5.7	81 ⁴

3+50

W	5.1	82 ⁰
crk	4.3	82 ⁸
"	3.9	83 ²
M	3.7	83 ⁴
"	3.1	84 ⁰
crk	2.7	84 ²
E	2.7	84 ²

3+75

E	2.4	84 ⁷
crk	2.8	84 ³
"	2.8	84 ³
M	3.2	83 ⁹
"	4.0	83 ¹
crk	4.2	82 ⁹
W	4.7	82 ⁴

4+0

W	4.8	82 ³
crk	4.1	83 ⁰
"	4.0	83 ¹
M	3.5	83 ⁶
"	3.0	84 ¹
crk	2.6	84 ⁵
E	2.3	84 ⁸

4425

E	2.6	84 ⁵
Crk	2.9	84 ²
1/4	3.2	83 ⁸
M	3.9	83 ²
1/4	4.4	82 ⁷
Crk	4.6	82 ⁵
W	5.2	81 ⁹

4450

W	5.4	81 ⁷
Crk	5.2	81 ⁹
1/4	4.9	82 ²
M	3.8	83 ³
1/4	3.6	83 ⁵
Crk	3.4	83 ⁷
E	3.0	84 ¹

4475

E	2.7	84 ⁴
Crk	3.1	84 ⁰
1/4	3.4	83 ⁷
M	4.2	82 ⁹
1/4	4.8	82 ³
Crk	5.2	81 ⁹
W	5.7	81 ⁴

540

W	5.2	81 ⁹
Crk	4.9	82 ²
1/4	4.8	82 ³
M	4.4	82 ⁷
1/4	3.6	83 ⁵
Crk	3.0	84 ¹
E	2.9	85 ⁷

91

287.13

5+25

E	3.5	83 ⁶
crk	3.6	83 ⁵
1/4	3.6	83 ⁵
M	4.0	83 ¹
1/4	4.6	82 ⁵
crk	4.9	82 ²
W	5.2	81 ⁹

5+50

W	5.7	81 ⁴
crk	5.2	81 ⁹
1/4	4.9	82 ²
M	4.3	82 ⁸
1/4	4.0	83 ¹
crk	4.0	83 ¹
E	3.8	83 ³

T.P.	5.77	289.45	3.95	123.68
------	------	--------	------	--------

5+75

E	7.4	82 ⁰
crk	8.2	81 ²
1/4	8.4	81 ⁰
M	9.0	80 ⁴
1/4	9.4	80 ⁰
crk	9.4	80 ⁰
W	9.5	79 ⁹

60' wide
5+997 = N.L. Landis, on E = 500 plot book 396 P17

W	8.6	80 ⁸
crk	8.0	81 ⁴
1/4	7.8	81 ⁶
M	7.8	81 ⁵
1/4	6.7	82 ⁷
crk	6.5	82 ⁹
E	6.3	83 ¹

3 Sample
10 - Shaw
10
19
E. Vans.

N curb on E

E	6.4	83 ⁰
crk	6.7	82 ³
"4	6.9	82 ⁵
M	7.8	81 ⁶
"4	7.9	81 ⁵
crk	8.2	81 ²
W	8.8	80 ⁶

N 1/4 on E

W	9.0	80 ⁴
crk	8.9	81 ⁰
"4	8.2	81 ²
M	8.0	81 ⁴
"4	7.1	82 ³
crk	6.8	82 ⁶
E	6.5	82 ⁵

Center on E

E	6.7	82 ³
crk	6.9	82 ⁵
"4	6.9	82 ⁵
M	7.9	81 ⁵
"4	9.2	80 ²
crk	10.0	79 ⁴
W	10.3	79 ¹

S 1/4 on E

W	9.5	79 ⁹
crk	8.6	80 ⁸
"4	8.5	80 ⁹
M	8.0	81 ⁴
"4	7.0	82 ⁴
crk	7.0	82 ⁴
E	6.5	82 ⁹

S. curb on E

E	6.6	82 ⁸
crk	7.2	82 ²
1/4	7.2	82 ²
M	8.1	82 ³
1/4	8.6	80 ⁸
crk	8.8	80 ⁶
W	10.0	79 ⁴

N. L. Landis on W

W	9.7	79 ⁷
crk	9.1	80 ³
1/4	8.7	80 ³
M	8.2	81 ³
1/4	7.3	82 ¹
crk	7.3	82 ¹
+6	6.9	82 ⁵
E	6.7	82 ⁷

S. L. Landis on E

E	6.6	82 ⁸
+4	6.5	82 ⁹
crk	7.4	82 ²
1/4	7.7	81 ⁷
M	8.5	80 ⁹
1/4	8.8	80 ⁶
crk	9.0	80 ⁴
W	8.7	80 ⁷

N. curb on W

W	8.6	80 ⁸
crk	8.2	80 ⁶
1/4	8.7	80 ⁷
M	8.6	80 ⁸
1/4	8.1	81 ³
crk	7.8	81 ⁶
+7	6.4	83 ⁰
E	6.5	82 ⁹

N 1/4 on W

F	6.5	82 ⁹
+3	6.5	82 ⁹
crk	7.8	81 ⁶
1/4	8.4	81 ⁰
M	8.7	80 ⁷
1/4	8.9	80 ⁵
crk	8.6	80 ⁸
W	8.0	81 ³

Center on W

W	7.4	82 ⁰
crk	7.9	81 ⁵
1/4	8.0	81 ⁴
M	8.4	81 ⁰
1/4	7.6	81 ⁸
1/4		
crk	7.3	82 ¹
+7	6.2	83 ²
F	6.4	83 ⁰

S 1/4 on W

E	6.4	83 ⁰
crk	6.1	83 ³
1/4	6.9	82 ⁵
M	7.8	81 ⁶
1/4	7.5	81 ⁹
crk	7.3	82 ¹
W	7.0	82 ⁴

S. curb on W

W	7.1	82 ³
crk	7.2	82 ²
1/4	7.3	82 ¹
M	7.7	81 ³
1/4	6.5	82 ⁹
crk	6.5	82 ⁹
E	6.3	83 ¹

S.L. Landis on W

F	6.2	83 ²
crk	6.3	83 ¹
"	6.5	82 ⁹
M	7.2	82 ²
"	6.1	83 ³
crk	6.3	83 ¹
W	6.6	82 ⁸

0+75.5 of S.L. Landis on E

W	5.8	83 ⁶
crk	5.9	84 ⁰
"	5.3	84 ¹
M	6.5	82 ⁹
"	6.9	83 ⁰
crk	6.2	83 ²
E	5.8	83 ⁶

1+0

F	5.2	84 ²
crk	5.5	83 ²
"	5.6	83 ⁸
M	5.6	83 ⁸
"	5.7	83 ⁷
crk	5.7	83 ⁷
W	5.0	84 ⁴

1+25.

W	4.8	84 ⁶
crk	5.2	84 ²
"	5.3	84 ¹
M	5.1	84 ³
"	4.9	84 ⁵
crk	4.7	84 ⁷
E	4.5	84 ⁹

289.45

1450

E	3.7	85 ²
crk	3.4	86 ⁰
"4	3.4	86 ⁰
M	4.0	85 ⁴
"4	4.5	84 ⁸
crk	4.6	84 ⁸
W	4.4	85 ⁰

1475

W	3.6	85 ⁸
crk	2.5	85 ⁹
"4	3.3	86 ¹
M	2.6	86 ⁸
"4	2.2	87 ²
crk	2.2	87 ²
E	2.0	87 ⁴

T.P. 213 290.43 1.15 288.30

210

E	1.6	88 ⁸
crk	1.3	88 ⁶
"4	1.9	88 ⁵
M	2.5	87 ⁹
"4	3.0	87 ⁴
crk	2.7	87 ²
W	2.9	87 ⁵

2125

W	2.7	87 ²
crk	2.5	87 ⁹
"4	2.4	88 ⁰
M	2.3	88 ¹
"4	1.6	88 ⁸
crk	1.4	89 ⁰
E	1.1	89 ³

2+50

F	1.6	88 ⁸
erb	1.7	88 ⁵
"/q	1.9	88 ⁵
M	2.1	88 ³
"/q	2.4	88 ⁰
erb	2.5	87 ⁹
W	2.7	87 ⁷

2+75

W	2.4	88 ⁰
erb	2.4	88 ⁰
"/q	2.3	88 ¹
M	2.3	88 ¹
"/q	2.4	88 ⁰
erb	2.4	88 ⁰
F	2.3	88 ¹

3+0

F	2.7	87 ²
erb	2.5	87 ⁹
"/q	2.5	87 ⁹
M	2.5	87 ⁹
"/q	2.4	88 ⁰
erb	2.4	88 ⁰
W	2.5	87 ⁹

3+25

W	2.8	87 ⁶
erb	2.7	87 ²
"/q	2.7	87 ²
M	2.9	87 ⁵
"/q	3.1	87 ³
erb	3.1	87 ³
F	3.0	87 ⁴

3+50

E	3.6	86 ⁸
crb	3.7	86 ⁷
"q	3.8	86 ⁶
M	3.7	86 ²
"q	3.3	87 ¹
crb	3.4	87 ⁰
W	3.7	86 ⁷

3+75

W	4.3	86 ¹
crb	4.3	86 ¹
"q	4.4	86 ⁰
M	4.3	86 ¹
"q	4.3	86 ¹
crb	4.2	86 ²
E	4.0	86 ⁴

4+0

E	4.3	86 ¹
crb	4.4	86 ⁰
"q	4.4	86 ⁰
M	4.4	86 ⁰
"q	4.8	85 ⁶
crb	4.6	85 ⁸
W	4.4	86 ⁰

4+25

W	5.0	85 ⁴
crb	5.1	85 ³
"q	5.0	85 ⁴
M	5.0	85 ⁴
"q	4.9	85 ⁵
crb	4.7	85 ⁷
E	4.6	85 ⁸

26

4750

E	4.9	85 ⁵
cb	4.9	85 ⁵
"	5.2	85 ²
M	5.3	85 ¹
"	5.3	85 ¹
cb	5.2	85 ²
W	5.2	85 ²

4775

W	5.8	84 ⁶
cb	5.9	84 ⁵
"	5.9	84 ⁵
M	5.5	84 ⁹
"	5.9	85 ⁰
cb	5.2	85 ²
E	5.2	85 ²

570

E	5.5	84 ⁹
cb	5.8	84 ⁶
"	5.9	84 ⁵
M	5.5	84 ⁹
"	5.5	84 ⁹
cb	5.6	84 ⁸
W	5.9	84 ⁵

5725

W	6.2	84 ³
cb	5.6	84 ⁸
"	5.6	84 ⁸
M	6.1	84 ³
"	6.3	84 ¹
cb	6.0	84 ⁴
E	5.8	84 ⁶

27

5150

E	6.0	84 ⁴
crk	6.2	84 ²
"	6.4	84 ⁰
M	6.7	83 ²
"	6.7	83 ²
crk	6.8	83 ⁶
W	6.6	83 ⁸

5175

W	6.8	83 ^E
crk	7.1	83 ²
"	7.2	83 ²
M	6.8	83 ^E
"	6.5	83 ⁹
crk	6.6	83 ⁸
E	6.5	83 ²

5199 = M.L. Dwight ^{60' wide} on E see Plot book 396 P17

E	7.0	83 ⁴
crk	6.9	83 ⁵
"	6.7	83 ²
M	7.0	83 ⁴
"	7.6	82 ⁸
crk	7.1	83 ³
W	7.1	83 ³

N. 60' wide on E

W	7.2	83 ³
crk	7.2	83 ²
"	7.5	82 ⁹
M	7.7	82 ²
"	7.9	83 ⁰
crk	7.2	83 ²
E	7.2	83 ²

N 1/4 on E

E	7.3	83 ¹
crk	7.5	82 ⁹
1/4	7.7	82 ⁷
M	7.8	82 ⁶
1/4	7.6	82 ⁸
crk	7.4	83 ⁰
W	7.3	83 ¹

CENTER ON E

W	7.5	82 ⁹
crk	7.8	82 ⁶
1/4	8.1	82 ³
M	8.4	82 ⁰
1/4	7.9	83 ⁰
crk	7.4	83 ⁰
E	7.4	83 ²

290.43

S 1/4 on E

29

E	7.1	83 ³
crk	7.0	83 ⁴
1/4	7.2	83 ²
M	7.7	82 ⁹
1/4	7.7	82 ⁷
crk	7.4	83 ⁰
W	7.5	82 ⁹

S. CURVE ON E

W	7.3	83 ¹
crk	7.6	82 ⁸
1/4	7.6	82 ⁸
M	8.6	81 ⁸
1/4	7.4	83 ⁰
crk	7.2	83 ²
E	7.3	83 ¹

S.W. Dighton^{60'} W

E	7.6	82 ⁸
cb	7.6	82 ⁸
"	7.9	82 ⁵
M	8.7	81 ⁷
"	8.0	82 ⁴
cb	7.7	82 ⁷
W	7.5	82 ⁹

S.W. Dighton E

W	7.4	83 ⁰
cb	7.7	82 ⁷
"	7.9	82 ⁵
M	8.7	81 ⁷
"	8.2	82 ²
cb	7.9	82 ⁵
E	7.7	82 ⁵

N. Dighton W

E	7.9	82 ⁵
cb	8.1	82 ³
"	8.4	82 ⁰
M	8.6	81 ⁸
"	7.8	82 ⁶
cb	7.7	82 ⁷
W	7.2	83 ²

N. Dighton W

W	7.3	83 ¹
cb	7.6	82 ⁸
"	7.6	82 ⁸
M	8.5	81 ⁹
"	8.7	81 ⁷
cb	8.2	82 ³
E	7.9	82 ⁵

center on W

F	8.2	82 ²
orb	8.6	81 ⁸
1/4	9.1	81 ³
M	8.4	82 ⁰
1/4	7.6	82 ²
orb	7.5	82 ⁹
W	7.5	82 ⁹

S 1/4 on W

W	8.2	82 ²
orb	8.3	82 ¹
1/4	8.3	82 ¹
M	8.6	81 ³
1/4	9.5	80 ⁹
orb	8.8	81 ⁶
E	8.4	82 ⁰

S. 0.476 on W

F	8.5	81 ⁹
orb	9.2	81 ²
1/4	9.5	80 ⁹
M	8.5	81 ⁹
1/4	8.3	82 ¹
orb	8.2	82 ²
W	8.5	81 ⁹

S.L. Dwight on W

W	8.4	82 ⁰		
orb	8.1	82 ³		
1/4	8.3	82 ¹		
M	8.6	81 ⁸		
1/4	9.8	80 ⁶		
orb	9.6	80 ⁸		
E	9.0	81 ⁴		
T.P.	3.25	285.28	8.40	282.03

0+75 S. of S.L. Dwight on F

E	3.9	81 ⁴
erb	4.7	80 ⁶
"A	4.8	80 ⁵
M	3.8	81 ⁵
"A	3.2	82 ^L
erb	3.1	82 ³
W	3.1	82 ³

1+0

W	3.9	81 ⁴
erb	3.7	81 ⁶
"A	3.6	81 ³
M	4.1	81 ²
"A	4.8	80 ⁵
erb	5.0	80 ³
E	4.2	81 ¹

1+25

E	5.0	80 ³
erb	5.1	80 ²
"A	5.1	80 ²
M	4.7	80 ⁵
"A	4.1	81 ³
erb	4.0	81 ³
W	3.9	81 ⁴

1+50

W	4.3	81 ⁰
erb	4.1	81 ²
"A	4.0	81 ³
M	4.4	80 ⁹
"A	5.4	79 ⁹
erb	5.6	79 ²
E	5.1	80 ²

1775

E	4.8	80 ⁵
erb	5.9	79 ⁴
"A	5.5	79 ⁸
M	4.3	81 ⁰
"A	4.4	80 ⁹
erb	4.9	80 ⁹
W	4.6	80 ⁷

270

W	4.7	80 ⁶
erb	4.7	80 ⁶
"A	4.7	80 ⁶
M	4.7	80 ⁶
"A	5.7	79 ⁶
erb	6.0	79 ³
E	5.8	79 ⁵

2725

E	6.3	79 ⁰
erb	5.0	80 ³
"A	4.6	80 ⁷
M	4.2	81 ^L
"A	4.5	80 ⁸
erb	4.7	80 ⁶
W	4.4	80 ⁹

2750

W	4.7	80 ⁶
erb	5.1	80 ²
"A	5.3	80 ⁰
M	5.6	79 ⁷
"A	5.4	79 ⁰
erb	5.5	79 ⁸
E	6.1	79 ²

2775

E	6.0	79 ³
W	5.9	79 ⁴
"A	5.9	79 ²
M	5.6	79 ²
"A	5.4	79 ²
W	5.3	80 ⁰
W	4.8	80 ⁵

370

W	4.7	80 ⁶
W	5.2	80 ¹
"A	5.9	79 ²
M	5.9	79 ⁴
"A	6.6	78 ²
W	6.6	78 ²
E	7.0	78 ³

3725

E	7.2	78 ¹
W	6.8	79 ⁰
"A	5.7	79 ⁶
M	5.0	80 ³
"A	4.7	80 ⁶
W	4.8	80 ⁵
W	4.6	80 ²

3750

W	4.6	80 ²
W	5.2	80 ¹
"A	5.4	79 ²
M	6.2	79 ¹
"A	6.4	78 ²
W	6.6	79 ²
E	6.8	78 ⁵

3+75

E	6.7	78 ⁶
crk	6.4	78 ⁹
"A	6.5	78 ⁸
M	6.1	79 ²
"A	5.5	79 ⁸
crk	5.2	80 ^L
W	4.4	80 ⁹

410

W	4.3	81 ⁰
crk	4.8	80 ⁵
"A	5.1	80 ²
M	6.4	78 ⁹
"A	7.0	78 ³
crk	7.0	78 ³
E	7.2	78 ^L

4+25

35

E	7.7	77 ⁶
crk	7.7	77 ⁶
"A	7.5	77 ⁸
M	6.6	78 ²
"A	5.7	79 ⁶
crk	5.3	80 ⁰
W	4.7	80 ⁶

4150

W	4.6	80 ²
crk	5.4	79 ⁹
"A	5.7	79 ⁶
M	6.8	78 ⁵
"A	7.2	77 ⁵
crk	8.1	77 ²
E	8.6	76 ²

285.28

4175

E	9.2	76 ¹
crk	8.6	76 ²
1/4	8.3	77 ⁰
M	7.2	78 ¹
1/4	5.6	79 ²
crk	5.1	80 ³
W	4.4	80 ⁹

510

W	4.8	80 ⁵
crk	5.5	79 ⁸
1/4	5.8	79 ⁵
M	7.6	77 ²
1/4	8.6	76 ²
crk	8.8	76 ⁵
E	9.2	76 ¹

36

5125

E	10.2	75 ¹
crk	9.7	75 ⁶
1/4	9.2	76 ¹
M	7.8	77 ⁵
1/4	6.2	79 ¹
crk	5.8	79 ⁵
W	4.8	80 ⁵

5150

W	5.8	79 ⁵
crk	6.6	78 ²
1/4	6.9	78 ⁴
M	8.1	77 ²
1/4	9.7	75 ⁶
crk	10.1	75 ²
R	10.7	74 ⁶

T.P.	4.93	279.57	10.64	274.64
------	------	--------	-------	--------

279.57

5775

E	5.2	74 ⁴
crk	4.5	75 ¹
"/4	4.2	75 ⁴
M	3.1	76 ⁵
"/4	1.7	77 ²
crk	1.3	78 ³
W	0.6	79 ⁰

5499⁵¹ = M.L. Myrtle⁶⁰ on E

W	1.9	79 ²
crk	1.9	77 ²
"/4	2.5	77 ¹
M	3.9	75 ²
"/4	4.7	74 ²
crk	5.0	74 ⁰
E	5.5	74 ¹

37

M. Curk on E

E	5.7	73 ⁹
crk	5.2	74 ³
"/4	5.0	74 ⁴
M	4.2	75 ⁴
"/4	3.3	76 ³
crk	2.7	76 ⁹
W	1.9	77 ²

N. 1/4 on E

W	2.1	77 ⁵
crk	3.2	76 ⁴
"/4	3.6	76 ⁰
M	4.5	75 ¹
"/4	5.1	74 ⁵
crk	5.3	74 ³
E	5.7	73 ⁹

Center on E

E	6.1	73 ⁵
erb	5.7	73 ²
"4	5.6	74 ⁰
M	4.9	74 ²
"4	4.0	75 ⁶
erb	3.6	76 ⁰
W	2.7	76 ⁹

3/4 on E

W	3.0	76 ⁶
erb	4.0	75 ⁶
"4	4.6	75 ⁰
M	5.6	74 ⁰
"4	6.1	73 ⁵
erb	6.2	73 ⁴
E	6.4	73 ²

S. curb on E

E	6.4	73 ²
erb	6.3	73 ³
"4	6.2	73 ⁴
M	5.7	73 ⁹
"4	4.8	74 ⁸
erb	4.1	75 ⁵
W	3.3	76 ³

Mid. Myrtle⁶⁰ on W

W	3.6	76 ⁰
erb	4.3	75 ³
"4	5.0	74 ⁶
M	5.7	73 ⁹
"4	6.2	73 ⁴
erb	6.3	73 ³
E	6.4	73 ²

S. L. Myrtle on E

E	6.6	73 ⁰
crk	6.3	73 ³
"A	6.2	73 ²
M	5.8	73 ²
"A	5.0	74 ⁶
crk	4.9	75 ²
W	3.6	76 ⁰

N. Crk on W

W	3.7	75 ¹
crk	4.6	75 ⁰
"A	5.2	74 ⁴
M	6.1	73 ⁵
"A	6.6	73 ⁰
crk	6.6	73 ⁰
E	6.5	72 ⁸

N "A on W

E	6.8	72 ⁸
crk	6.7	72 ⁹
"A	6.7	72 ⁹
M	6.2	73 ⁴
"A	5.3	74 ³
crk	4.7	74 ²
W	3.9	75 ²

Center on W

W	4.1	75 ⁵
crk	4.8	74 ⁸
"A	5.3	74 ³
M	6.5	73 ¹
"A	6.9	72 ²
crk	7.1	72 ⁵
E	7.3	72 ³

S. 1/4 on W

E	8.0	71 ⁶
Crk	7.7	74 ⁹
"A	7.5	72 ¹
M	6.9	72 ²
"A	5.5	74 ¹
Crk	5.0	74 ⁶
W	4.4	75 ²

S. Crk on W

W	4.5	75 ¹
Crk	5.1	74 ⁵
"A	5.6	74 ⁰
M	7.0	72 ⁶
"A	7.2	71 ⁸
Crk	7.8	71 ⁸
E	8.1	71 ⁵

S. 1/2 Myrtle on W

40

E	8.2	71 ⁴
Crk	8.1	71 ⁵
"A	8.0	71 ⁶
M	7.1	72 ⁵
"A	5.7	73 ⁹
Crk	5.2	74 ⁴
W	4.8	74 ⁸

0+75 S of S. 1/2 Myrtle on E

W	5.1	74 ⁵
Crk	5.6	74 ⁰
"A	6.1	73 ⁵
M	7.4	72 ²
"A	8.4	71 ²
Crk	8.5	71 ¹
E	8.9	70 ⁷

170

E	9.6	70 ⁰
crk	8.9	70 ²
1/4	8.8	70 ⁸
M	7.6	72 ⁰
1/4	6.3	73 ³
crk	5.9	73 ²
W	5.5	74 ¹

1725

W	5.8	73 ⁸
crk	6.5	73 ¹
1/4	6.8	72 ⁸
M	8.0	71 ⁶
1/4	9.1	70 ⁵
crk	9.3	70 ³
E	9.8	69 ⁸

1750

E	10.1	69 ⁵
crk	9.5	70 ¹
1/4	9.3	70 ³
M	8.5	71 ¹
1/4	7.2	72 ⁴
crk	6.7	72 ⁹
W	6.0	72 ⁶

1775

W	6.4	73 ³
crk	7.0	72 ⁶
1/4	7.5	72 ¹
M	8.6	71 ⁰
1/4	9.4	70 ³
crk	9.8	69 ⁸
E	10.4	69 ²

2+0

E	10.7	69 ³
cb	9.9	69 ²
"	9.5	70 ¹
M	8.6	71 ⁰
"	7.9	71 ²
cb	7.5	72 ¹
W	6.8	72 ⁸

2+25

W	7.1	72 ⁵
cb	7.7	71 ⁹
"	7.9	71 ⁷
M	8.8	70 ²
"	9.8	69 ¹
cb	10.0	69 ⁶
E	10.4	69 ²

2+50

E	10.8	68 ⁸
cb	10.3	69 ³
"	10.1	69 ⁵
M	9.2	70 ⁴
"	8.2	71 ⁴
cb	7.8	71 ⁸
W	7.2	72 ⁴

2+75

W	7.6	72 ⁰
cb	8.2	71 ⁴
"	8.4	71 ²
M	9.2	70 ⁴
"	10.1	69 ⁵
cb	10.5	69 ¹
E	11.1	68 ⁵

279.57

3+0

E	11.3	68 ³
crk	10.8	68 ²
1/4	10.4	69 ²
M	9.6	70 ⁰
1/4	8.8	70 ²
crk	8.5	71 ¹
W	7.8	71 ²

3+10⁵ from S.L. Myrtle on E 8 2+56⁹ from S.L. Myrtle on W. Park

W	8.0	71 ⁶
crk	8.5	71 ¹
1/4	8.7	70 ²
M	9.5	70 ¹
1/4	10.2	69 ²
crk	10.4	69 ²
E	11.0	68 ⁶

1-section 8th St N.E. Monterey N for 330' on 3/4 Bunkle
 B.M. 346 on W. 8th St wide 5' quarters 20/ John
 B.M. 422 on University 28th St N.W. 289.22 Evans

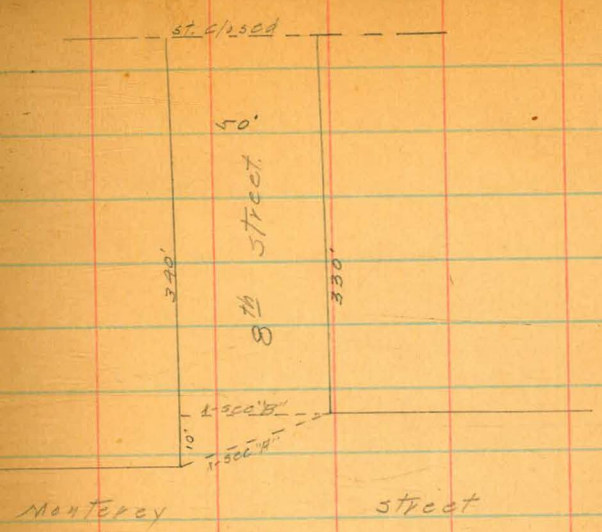
B.M.	4.6	288.58		
T.P.	4.46	288.97	4.07	284.51.8m

1-section "A"

N		4.3	284.7
cut		4.8	283.2
"A		4.7	285.3
M		4.4	284.6
"A		4.1	284.9
cut		4.1	284.9
E		3.9	285.1

1-section "B"

E		3.9	285.1
cut		4.3	284.7
"A		4.3	284.7
M		4.4	284.6
"A		4.8	284.2
cut		4.9	284.1
N		4.7	284.3



N		4.6	284.4
cut		5.0	283.0
"A		4.9	284.1
M		4.8	284.2
"A		4.5	284.5
cut		4.2	284.8
E		3.8	285.2

288.97

0+50 N

E	3.8	285.2
orb	4.2	284.8
"A	4.3	284.7
M	4.7	284.3
"A	4.7	284.3
orb	4.9	284.1
W	4.6	284.2

0+75

W	4.5	284.5
orb	4.5	284.5
"A	4.3	284.7
M	4.2	284.5
"A	4.2	284.8
orb	3.9	285.1
E	3.7	285.3

45

1+0

E	3.7	285.3
orb	3.8	285.2
"A	4.0	285.0
M	4.2	284.5
"A	4.4	284.6
orb	4.5	284.5
W	4.3	284.7

1+25

W	4.5	284.5
orb	4.5	284.5
"A	4.6	284.4
M	4.5	284.5
"A	4.3	284.7
orb	4.2	284.8
E	4.0	285.0

288.91

1450

E	4.0	285.0
col	4.2	284.8
14	4.5	284.5
M	4.6	284.4
14	4.5	284.5
col	4.4	284.6
W	4.3	284.7

1475

W	5.2	283.8
col	4.4	284.6
14	4.2	284.8
M	4.6	284.4
14	4.5	284
Col	4.2	284.8
E	4.3	284.7

46

240

E	4.1	284.9
col	4.4	284.6
14	4.4	284.6
M	4.5	284.5
14	4.4	284.6
col	4.6	284.4
+5	5.2	
W	7.2	281.8

2425

W	8.7	280.3
+6	5.7	
col	4.5	284.5
14	4.2	284.7
M	4.4	284.6
14	4.5	284.5
col	4.5	284.5
E	4.2	284.8

2145

E	9.2	284.8
wh	9.6	284.4
"A	4.5	284.5
M	9.9	284.6
"A	4.3	284.7
wh	9.5	284.5
W	8.3	280.7

2146

W	4.5	284.5
wh	4.7	284.3
"A	4.3	284.7
M	9.9	284.6
"A	4.5	284.5
wh	4.6	284.4
E	4.2	284.8

2150

E	9.3	284.7
wh	9.7	284.3
"A	4.6	284.
M	9.4	284.6
"A	4.5	284.5
wh	5.3	
+1	9.2	284.2
W	4.6	284.4

2175

W	4.9	284.1
+9	4.9	
wh	5.4	283.6
"A	5.0	283.0
M	4.7	284.3
"A	4.8	284.2
wh	4.9	284.1
E	4.8	284.2

3+0

E	5.2	283.5
cols	5.4	283.6
14	5.2	283.8
M	5.0	284.0
14	5.4	283.6
cols	5.1	283.9
W	5.2	283.5

3+30 = end of 0+

W	5.5	283.5
cols	5.4	283.6
14	5.4	283.6
M	5.5	283.5
14	5.9	283.1
cols	5.8	283.2
E	5.8	283.2

X-section Monterey st E.L. 83 To 100' E of
 9th St & Levels from sta 14 to N.L. 10th St
 Sec page 51
 B.M. Feb 2nd Monterey 284.51

3/20 Sample
 1/10 Shale
 Erosion

B.M.	4.31	288.82	
			E.L. 83 St
N	3.7	285.1	
crk	3.7	285.1	
"	3.7	285.1	
N	3.7	284.9	
"	4.1	284.7	
crk	3.9	284.9	
S	3.3	285.5	
			0+25 E
S	3.1	285.7	
crk	3.9	285.4	
"	3.8	285.5	
N	3.5	285.3	
"	3.4	285.4	
crk	3.8	285.5	
N	3.3	285.6	

288.82

0+50

49

N	3.1	285.7	
crk	3.5	285.3	
"	3.3	285.5	
N	3.3	285.5	
"	3.1	285.7	
crk	3.1	285.7	
S	2.7	286.1	
			0+75
S	2.8	286.0	
crk	3.1	285.7	
"	3.0	285.8	
"	3.3	285.5	
"	3.5	285.3	
crk	4.0	284.8	
N	3.9	284.9	

288.82

170

N	4.2	284.6
cb	4.3	284.5
1/4	4.3	284.5
M	4.2	284.6
1/4	3.7	285.1
cb	3.5	285.3
S	3.2	285.6

1725

S	3.9	284.9
cb	4.2	284.6
1/4	4.1	284.7
M	4.4	284.4
1/4	4.3	284.5
cb	4.2	284.6
N	4.4	284.4

288.82

1750

N	4.8	284.0
cb	4.8	284.0
1/4	4.8	284.0
M	4.8	284.0
1/4	4.2	284.6
cb	4.2	284.6
S	3.7	285.1

1775

S	3.9	284.9
cb	4.6	284.2
1/4	4.6	284.2
M	4.7	284.1
1/4	4.7	284.1
cb	5.3	283.5
N	4.9	283.9

50

288.72

2+0

			at 2+10
N	5.0	283.5	283.4
Crk	5.6	283.2	283.1
1/4	5.5	283.3	283.2
M	5.1	283.7	283.4
1/4	4.8	284.0	283.6
Crk	4.6	284.2	283.8
S	4.2	284.6	284.3

Interpolate for readings at 2+10

2+25

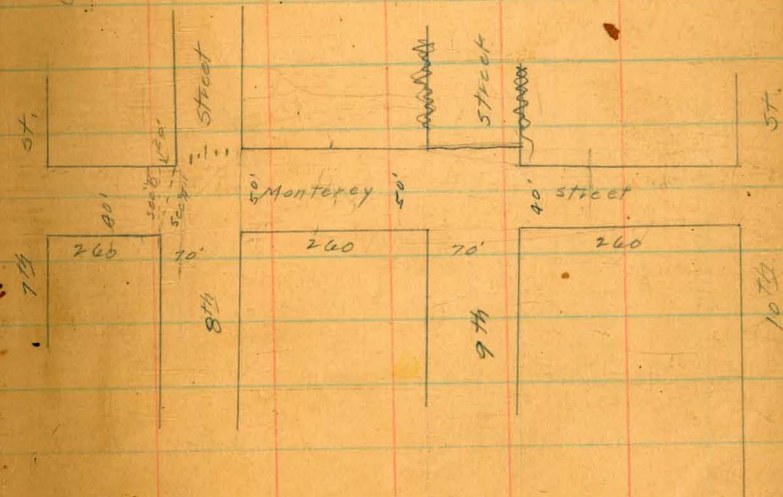
S	4.9	283.9
Crk	5.6	283.2
1/4	5.7	283.1
M	5.8	283.0
1/4	5.8	283.0
Crk	5.8	283.0
N	5.5	283.2

288.92

2+60 = W.L. 9th of 70' wide

51

N	5.7	283.1
Crk	5.9	282.9
1/4	6.0	282.8
M	5.6	283.2
1/4	5.4	283.4
Crk	5.3	283.4
S	4.8	284.0



288.82

W CURN

S	5.2	283.6
CRN	5.9	283.4
"	5.3	283.5
"	5.7	283.1
"	6.0	282.8
CRN	6.0	282.8
A	5.8	283.0

W "A

A	6.0	282.5
CRN	6.0	282.8
"	6.0	282.8
"	5.8	283.0
"	5.5	283.3
CRN	5.3	283.5
S	5.2	283.6

288.82

Center

52

S	4.2	284.6
CRN	5.5	283.3
"	5.6	283.2
"	6.0	282.8
"	6.3	282.5
CRN	6.4	282.4
A	6.9	282.4

E "A

A	6.6	282.2
CRN	6.5	282.3
"	6.9	282.4
"	6.8	282.5
"	6.2	282.6
CRN	6.1	282.7
"	5.2	283.6

288.82

E. COIL

S	5.3	283.5
coil	6.1	282.2
1/4	6.3	282.5
M	6.4	282.4
1/4	6.5	282.3
coil	6.6	282.2
N	6.7	282.1

E. L. 9th ST sec Page 51

N	6.6	282.2
coil	6.6	282.2
1/4	6.6	282.2
M	6.5	282.3
1/4	6.4	282.4
coil	6.4	282.4
S	5.9	283.4

288.82

10+25

53

S	6.6	282.2
coil	6.6	282.2
1/4	6.5	282.3
M	6.5	282.3
1/4	6.5	282.3
coil	6.5	282.3
N	6.6	282.2

0+50

N	6.6	282.2
coil	6.8	282.0
1/4	6.7	282.1
M	6.5	282.3
1/4	6.4	282.4
coil	6.7	282.1
S	6.5	282.3

288.82

0475

S	7.2	281.6
ck	7.2	281.6
"4	7.1	281.7
"1	7.1	281.7
"4	7.0	281.8
ck	6.8	282.0
N	7.0	281.8

0480

N	7.0	281.8
ck	7.0	281.8
"4	7.1	281.7
"1	7.1	281.7
"4	7.4	281.4
ck	7.3	281.5
S	5.1	280.7

288.82

288.82

140

54

S	18.6	270.2
ck	18.3	270.5
"4	14.0	274.8
"1	14.5	274.3
"4	11.4	277.4
ck	8.5	280.3
N	8.0	280.8

1407

N	8.3	280.5
T.P	0.21	276.36
Q	12.67	276.15
Q	3.7	272.7
S	10.9	265.5

1425

S	17.9	258.5
Q	11.3	265.1
N	5.0	271.4
T.P	1.17	265.07
	12.46	263.90

24

265.07
1+50

N			3.2	261.9
Φ			9.8	255.3
S			15.6	249.5
T.P.	1.40	253.93	12.74	252.33
		1+75		
S			15.3	238.4
Φ			10.8	242.9
N			6.7	246.0
T.P.	0.38	251.10	13.01	250.72
		2+0		
N			1.4	349.7
Φ			5.3	345.8
S			9.9	341.2

251.10

55

2+25

S			15.1	236.0
Φ			14.0	237.1
N			9.5	241.6
T.P.	3.21	241.75	12.66	238.44
		2+60		
N			12.5	249.2
Φ			9.3	232.4
S			0.2	241.5

Location Monterey 5th 3rd W for 3 1/2 Sample
 260' " 40' wide 51 Shrub
 see plot page
 B.M. E. 8th Monterey 284.51 8 p.m.

287.69

56

B.M. 3.18 287.69

E. L. 8th

S 2.1 285.6

Crk 2.9 284.8

" 2.9 284.8

M 2.6 285.1

" 2.6 285.1

Crk 2.6 285.1

N 2.6 285.1

E. Crk

N 2.8 284.9

Crk 2.6 285.1

" 2.7 285.0

M 2.9 284.8

" 3.0 284.7

Crk 2.9 284.8

S 2.8 284.9

S 2.8 284.9

Crk 2.9 284.8

" 3.0 284.7

M 3.0 284.7

" 2.9 284.8

Crk 2.9 284.8

N 2.8 284.9

Center

N 3.1 284.6

Crk 3.3 284.4

" 3.3 284.4

M 3.4 284.3

" 3.3 284.4

Crk 3.1 284.6

S 2.9 284.8

287.69

W 14

S	3.1	284.6
crb	3.2	284.5
14	3.2	284.5
M	3.2	284.5
14	3.4	284.3
crb	3.5	284.2
N	3.5	284.2

M cut

N	3.5	284.2
crb	3.2	284.5
14	3.1	284.6
M	3.2	284.5
14	3.3	284.4
crb	3.2	284.5
S	3.1	284.6

287.69

r-section "A" see Page 51

57

S	3.1	284.6
crb	3.2	284.5
14	3.2	284.5
M	3.0	284.7
14	3.0	284.7
crb	3.0	284.7
N	3.0	284.7

r-section "B" see p 51

N	3.2	284.5
crb	3.1	284.6
14	3.1	284.6
M	3.1	284.6
14	3.1	284.6
crb	3.2	284.5
S	3.1	284.6

287.69

0+25' W of "B"

S	2.6	285.1
cut	3.3	284.8
"A	3.3	284.4
M	3.2	284.5
"A	3.2	284.5
cut	3.1	284.6
N	3.2	284.5

0+50' W

N	3.5	284.7
cut	3.4	284.3
"A	3.4	284.3
M	3.4	284.3
"A	3.4	284.3
cut	3.4	284.3
S	3.6	284.1

287.69

0+75'

58

S	4.1	283.6
cut	4.1	283.6
"A	3.9	283.8
M	3.7	284.0
"A	3.7	284.0
cut	3.7	284.0
N	3.8	283.9

1+0

N	4.5	283.2
cut	4.4	283.3
"A	4.3	283.4
M	4.4	283.3
"A	4.5	283.2
cut	4.6	283.1
S	4.9	282.8

287.69

1715

S	6.4	281.3
erb	6.2	281.5
1/4	6.1	281.6
M	6.0	281.7
1/4	6.3	281.4
erb	7.0	280.7
N	5.9	281.8

1725

N	10.5	277.2	274.4
erb	10.6	277.1	274.4
1/4	10.9	276.8	274.1
M	11.1	276.6	274.1
1/4	10.5	277.2	274.5
erb	10.9	276.8	274.2
S	11.3	276.4	273.9

T. P. 0.50 275.56 12.63 275.06

Interpolate for readings at 1730

275.56

1750

S	11.6	264.0
erb	11.9	263.7
1/4	12.0	263.6
M	11.7	263.9
1/4	12.2	263.4
erb	11.9	263.7
N	11.6	263.0

T. P. 0.25 263.05 12.76 262.80

1775

N	10.1	253.0
erb	10.7	252.4
1/4	11.2	251.9
M	10.2	252.9
1/4	10.3	252.8
1/4	9.6	253.5
erb	6.2	256.9
S	5.0	258.1

59

263.05

2+0

S		10.3	252.8
T.P.	0.75	250.95	12.85 250.20
orb		2.6	248.4
"4		3.9	247.1
M		8.6	242.3
"4		9.4	241.6
orb		8.2	242.8
N		7.4	243.5

2+25

N		19.2	231.7
orb		16.8	234.2
"4		15.2	235.8
M		13.0	237.9
"4		10.2	240.8
orb		8.1	242.9
S		2.7	248.2

60

2+60 250.95

S		8.8	242.1
orb		11.4	239.6
"4		13.6	237.4
M		15.6	235.3
"4		18.2	232.8
orb		20.1	230.9
N		26.2	224.7

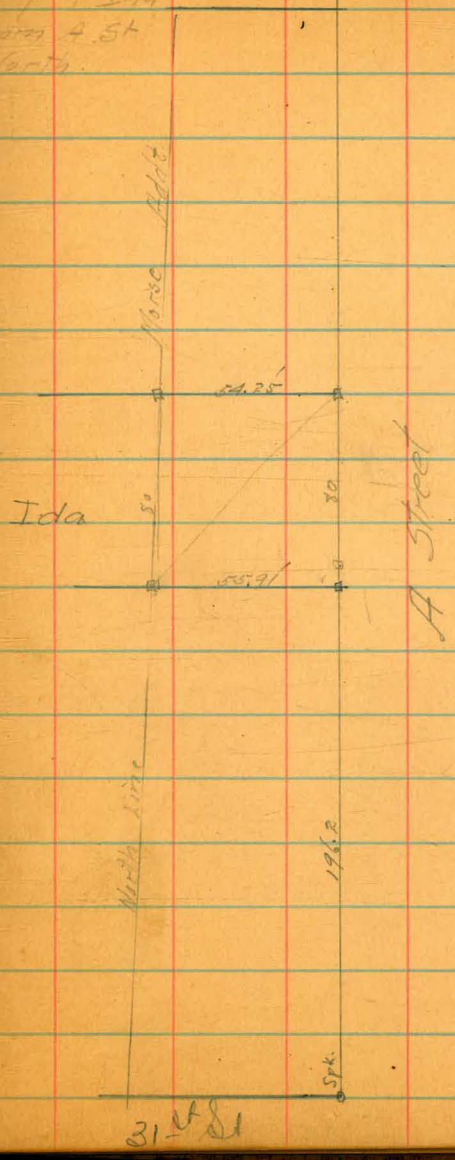
60

Survey for the
opening of Ida
St. From 4 St
North.

32^d St

2 Kato
35 from
10 there

61



4 Hatch
28' floor
18 Thomas

Profile of Alaricos St. from
Walnut to between Upas & Tourin.

W

CS

E

62

0.52 251.72
BTM Walnut and 1st 250.90

J.L. Walnut

4.6

3.6

2.9

50' S.

4.4

3.6

3.2

100' S.

4.2

3.7

4.1

150

3.9

3.8

4.4

167 = Mt Upas

2.9

3.9

5.2

Cr.

"

2.8

4.6

6.9

Sh

"

3.0

248.7

6.2

245.5

12.4

239.3

50' S

4.5

247.2

11.1

240.6

100' "

7.6

244.1

125

10.3

241.4

150

11.8

239.9

175

13.6

238.1

T.P.

120

240.12

13.00

238.72

200

3.3

236.8

225

4.7

235.4

250

6.1

234.0

48

240.12

50 3 of Vpas

110

125

150

175

200

T.P.

160 - 228.96 1276 22736

150

175

200

225

T.P.

126 217.86 1236 216.60

225

250

W

Cr.

E

63

5.0 235.1

3.0 237.1 7.3 232.8

4.6 235.5 9.9 230.2

5.8 234.3

7.4 232.7

9.6 230.5

2.7 224.3

11.1 217.9

14.4 214.6

5.9 2130

7.0 210.9

2.7 215.2 16.0 201.9

10
32
10
Hatch
Stones
Pegs

Y Dec. Broadway from this to Hawk

295 273.17 267.216 55 Mon
Ibis term 273.17
50 E

El. Ibis

N.	4.9	268.3
cb	5.2	268.0
1/2	5.2	268.0
c	5.1	268.1
1/2	5.2	268.0
cb	5.1	268.1
s	5.2	268.0

25' E

s	5.8	267.4
cb	5.6	267.6
1/2	5.7	267.5
c	5.5	267.7
1/2	5.6	267.6
cb	5.2	268.0
n	4.9	268.3

N	5.1	268.1
cb	5.8	267.4
1/2	6.1	267.1
c	6.2	267.0
1/2	6.5	266.7
cb	6.5	266.7
s	7.4	265.8
2'S	8.9	264.3
30'S	11.0	262.2

45' E

20'S	13.4	259.8
13'S	10.9	262.3
s	8.4	264.8
cb	7.1	266.1
1/2	6.8	266.4
c	6.7	266.5

273.17

1/4			6.7	266.35
cb			6.5	266.7
N			5.6	267.6
T.P.	0.5-8	268.05	5.70	267.47
		100' E		
N			0.6	267.5
45			1.1	267.0
cb			2.0	266.1
1/2			2.1	266.0
c			2.1	266.0
1/4			2.3	265.8
cb			2.3	265.8
S			3.8	264.3
7'S			6.6	261.5
30 S.			9.3	258.8
		125' E		
30'S			17.0	251.1

268.05

30'S			13.3	254.8
S			6.3	261.8
cb			3.4	264.7
1/2			2.7	265.4
c			2.2	265.9
1/2			2.2	265.9
cb			2.0	266.1
N			1.4	266.7
		100' E		
N			1.6	266.5
cb			1.9	266.2
1/2			2.3	265.8
c			3.7	265.4
1/2			4.9	263.2
cb			7.9	260.2
S			12.0	255.1
22'S			22.0	246.1
47'S			29.7	238.4

268.05

175' E

N		1.5	266.6
cb		3.3	264.8
+3		5.2	262.9
1/2		6.2	261.9
C		8.5	259.6
1/4		12.2	255.9
15' N	200' E = Wk. + hawk	7.5	260.6
N		10.0	258.1
cb.		12.5	255.6
T.P.	0.25 255.15	13.15	252.90
1/4		2.5	252.7
C		6.2	249.0
1/4		9.6	245.6
cb		12.4	242.8
S		15.8	239.4
25's		25.3	229.9

Same slope for 50' more

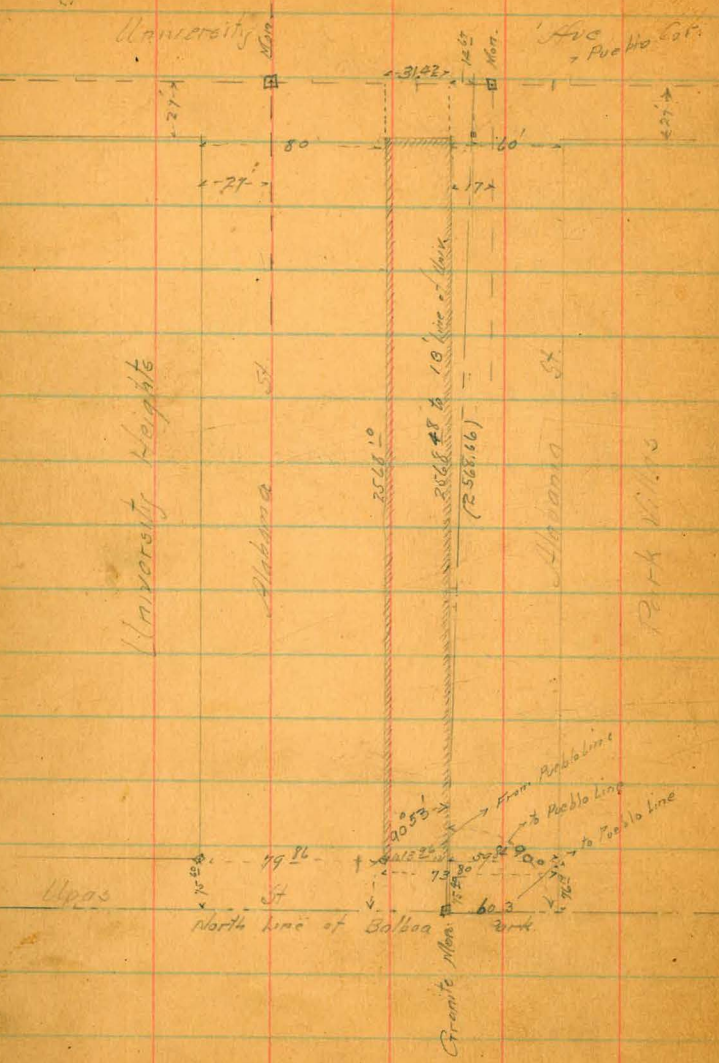
175' E

cb.		1.6	253.6
S		6.9	248.3
35's		20.6	234.6
45's		24.6	230.6

The slope of Broadway across the intersection of Hawk is uniform to the east.

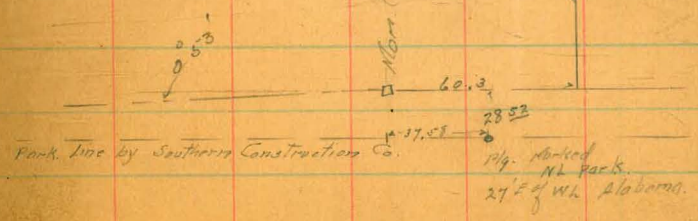
12 Webb
5 Kline
18 Rogers

Survey of Strip between
the two Alabama Streets



both angles (90° 02' 90° 53') refer to Pueblo Line

Sta 246 = St Myrtle
Sta 10457 = St Cypress
1897 = W. Robinson



12 Hatch
 6 Moore
 10 Rogers
 X sec Date St from 30" to Fern

Date - 30" SE Cor

1374 19.5.97 246.33 236.86

FL 30"

N - 6.8 239.5

10 - 7.1 239.2

30 7.7 238.6

20 7.7 238.6

20 8.1 238.2

20 8.7 237.6

60 9.5 236.8

70 - 9.2 237.1

S - 9.2 237.1

4' E

S 9.1 237.2

10 8.5 237.5

20 7.5 238.8

27 6.8 239.5

30 7.7 238.6

38 { 7.0 239.3

{ 5.9 240.4

70 5.6 240.7

246.23

68

50 5.2 241.1

60 3.8 242.5

70 2.8 243.5

N 1.9 244.4

25' E

N 1.5 244.8

10 2.3 244.0

30 3.0 243.3

30 3.9 242.4

40 4.8 241.5

50 5.8 240.5

60 7.0 239.3

70 8.6 237.7

5 9.1 237.2

50' E

5 9.4 236.9

10 8.3 238.0

20 6.8 239.5

24633

30	5.5	240.8
40	4.5	241.8
50	3.7	242.6
60	3.0	243.3
70	2.3	244.0
N	1.3	245.0
75° E		
N	1.5	244.8
10	2.3	244.0
20	3.1	243.2
30	3.9	242.4
40	4.9	241.4
50	6.0	240.3
60	7.1	239.2
70	8.3	238.0
S	9.3	237.0

24633

69

100° E

5	9.6	236.7
10	8.1	238.2
20	6.7	239.6
30	5.5	240.8
40	4.5	241.8
50	3.7	242.6
60	3.1	243.2
70	2.4	243.9
N	1.6	244.7
120° E		
N	2.2	244.1
10	2.9	243.4
20	3.7	242.6
30	4.4	241.9
40	5.2	241.1
50	6.2	240.1

246.33

60	7.2	239.1
70	8.4	237.9
S	10.0	236.3
150 E		
S	10.3	236.0
10	8.9	237.4
20	7.6	238.7
30	6.5	239.8
40	5.6	240.7
50	4.7	241.6
60	4.1	242.2
70	3.3	243.0
N	2.5	243.8
175 E		
N	2.9	243.4
10	3.6	242.7
20	4.3	242.0

246.33

30	4.9	241.4
40	5.6	240.7
50	6.7	239.6
60	7.7	238.6
70	9.0	237.3
S	10.2	236.1
200 E		
S	10.2	236.1
10	9.1	237.2
20	8.1	238.2
30	7.2	239.1
40	6.4	239.9
50	5.4	240.9
60	4.6	241.7
70	4.0	242.3
N	3.3	243.0

246.33

71

I 30 E = W L Ferry St.

N	5.0	241.3
10	5.7	240.6
20	6.3	240.0
30	6.9	239.4
40	7.5	238.8
50	8.6	237.7
60	9.7	236.6
70	10.4	235.9
8	11.2	235.1

Alley bet 4th & 5th

Pennsylvania

72

W.

C.

E

150 N 282⁵⁹

281⁶²

282³⁹

125 N 282⁵¹

281⁵⁴

282³¹

100 N 282⁴³

281⁴⁶

282²⁴

75 N 282³⁴

281³⁸

282¹⁵

50 N 282²⁶

281³⁰

282⁰⁷

~~25 N~~ 282¹⁶

281²⁰

281⁹⁷

20 N. - 282⁰⁸

00

282⁰⁰

281⁷⁵

281⁹¹

NL Brooks

				279 ⁹¹
00	E		4 ¹⁵	282 ⁹²
20 N	W	6 ¹⁶	286 ⁰⁷	3 ⁹⁰ 282 ¹⁷
2	E		4 ¹⁰	281 ⁹⁷
50 N	W		3 ⁸⁰	282 ²⁷
	F		3 ⁹⁷	282 ¹⁰
75 N	W		3 ⁷⁰	282 ³⁷
	E			
100 N	W		3 ⁶²	282 ⁴⁵
	E		3 ⁸²	282 ²⁵
15	125 N	W	3 ⁵³	282 ⁵⁴
12	E		3 ⁷⁵	282 ³²
10	150 N	W	3 ⁴⁸	282 ⁵⁹
75	E		3 ⁶⁸	282 ³⁹
50				
25				
20 N				
00				

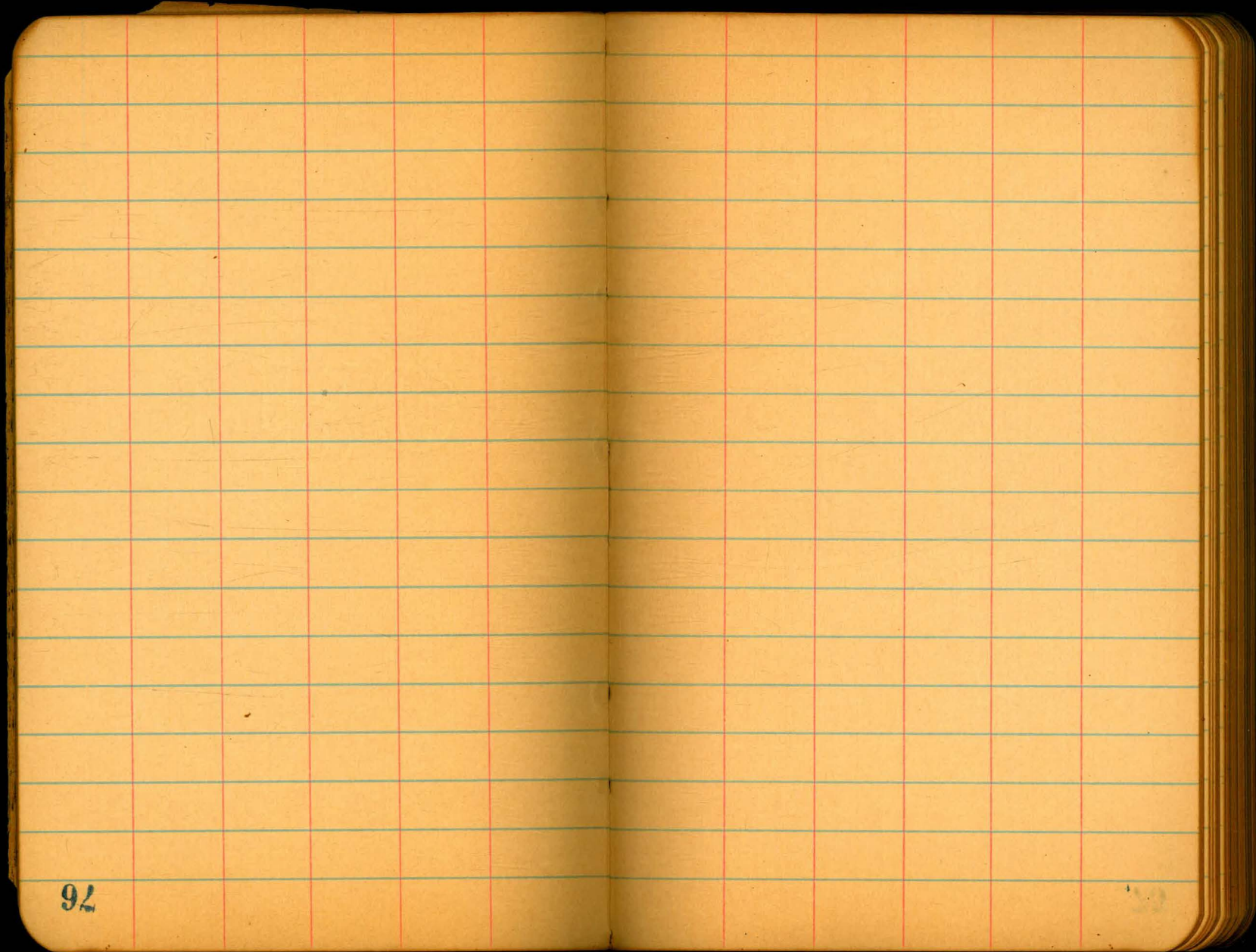
in return
Brass plug_n N.W. Cor 5th & Brooks.

(N.W. Cor 4th & Brooks 283³²)

24

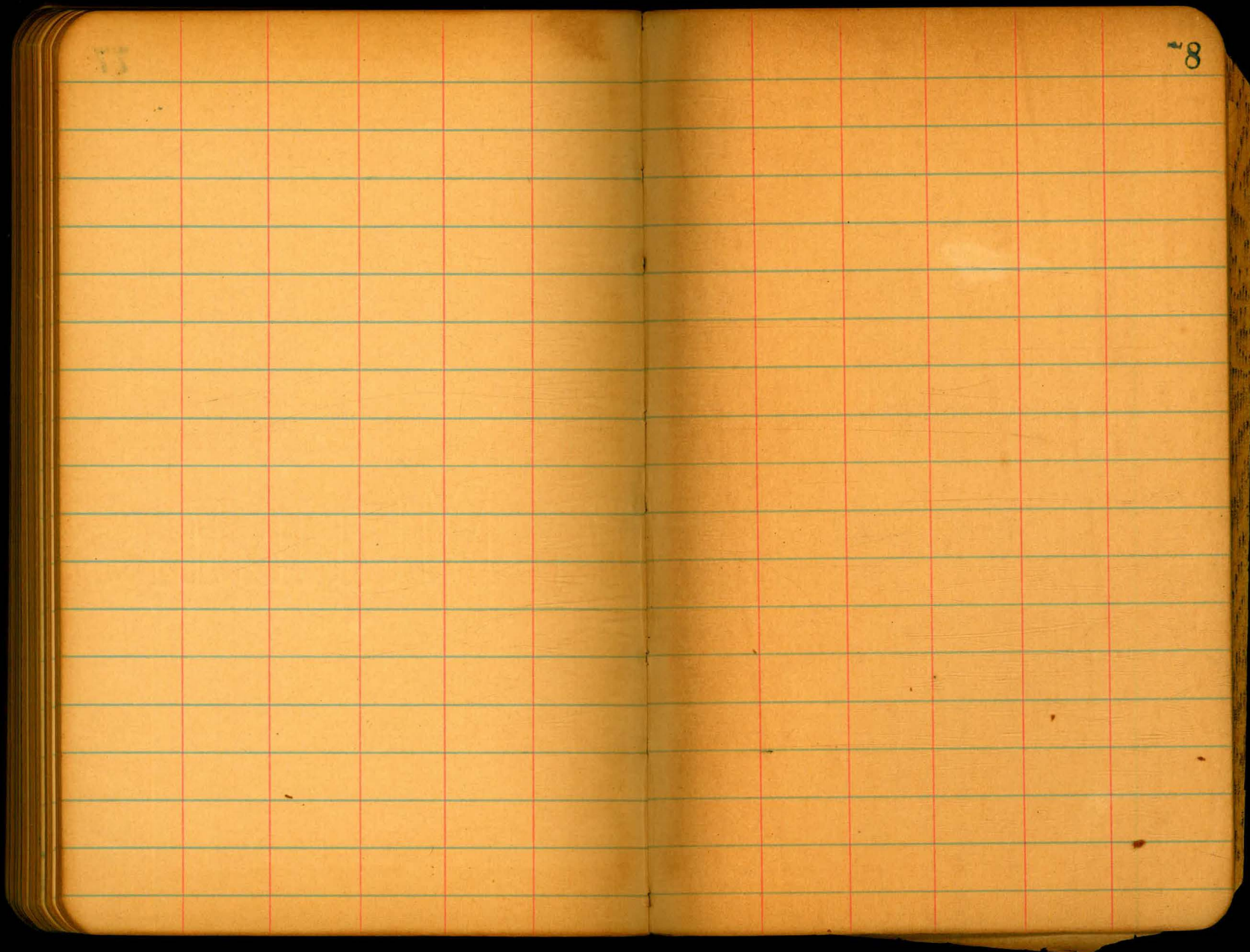
25

75



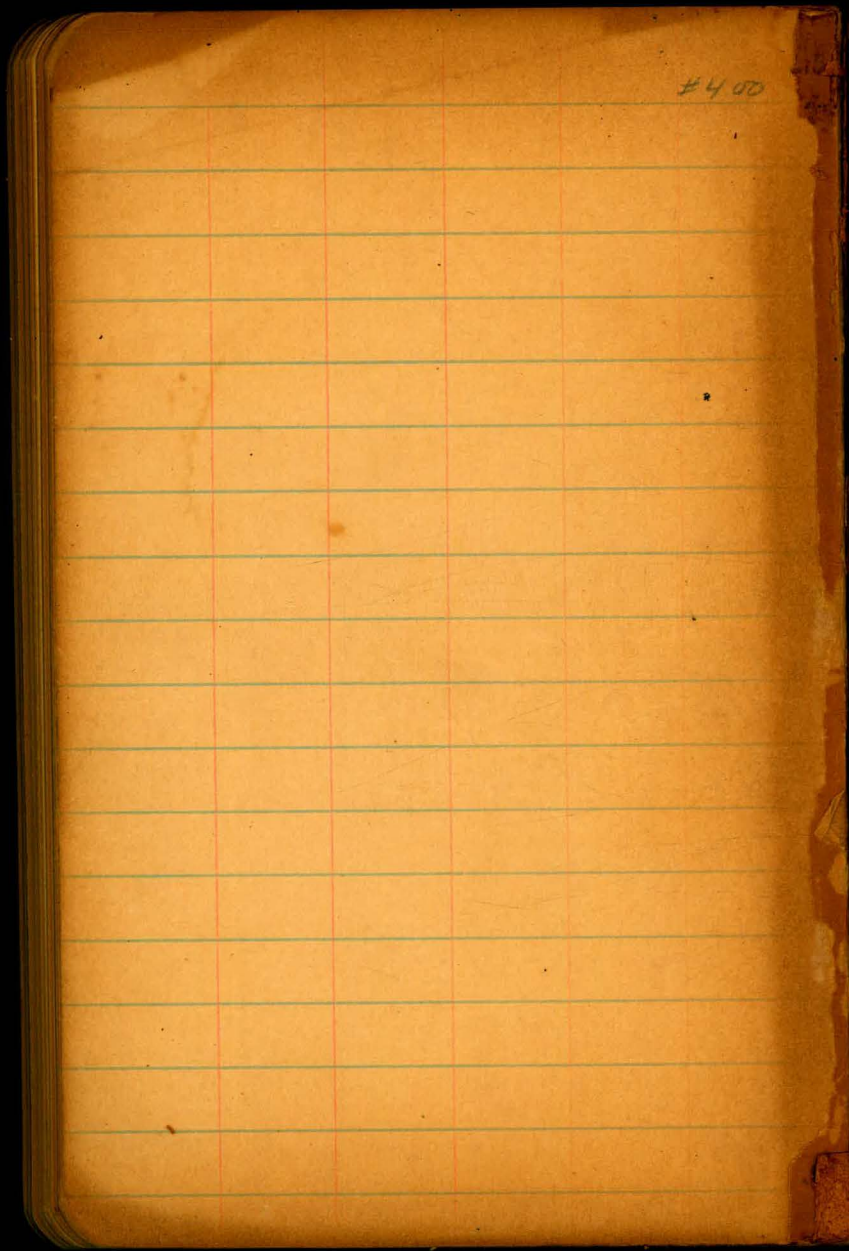
76

77



73

8



#400

