

*Return to City Engineers Office
City Hall, San Diego, Cal.*

LEVEL BOOK

400

F.B. 411

H. S. CROCKER COMPANY

DRAWING MATERIALS AND
SURVEYING INSTRUMENTS **411**

SAN FRANCISCO

TABLES FOR EXCAVATIONS AND EMBANKMENTS

DISTANCE FROM CENTER OF ROADWAY TO CROSS-SECTIONING
Roadway 18 Feet Wide. Side Slopes 1 to 1.
For Single Track Excavation.

Copyright, 1893, by H. S. Crocker & Esser Co.

	0	.1	.2	.3	.4	.5	.6	.7	.8	.9	
0	9.0	9.1	9.2	9.3	9.4	9.5	9.6	9.7	9.8	9.9	0
1	10.0	10.1	10.2	10.3	10.4	10.5	10.6	10.7	10.8	10.9	1
2	11.0	11.1	11.2	11.3	11.4	11.5	11.6	11.7	11.8	11.9	2
3	12.0	12.1	12.2	12.3	12.4	12.5	12.6	12.7	12.8	12.9	3
4	13.0	13.1	13.2	13.3	13.4	13.5	13.6	13.7	13.8	13.9	4
5	14.0	14.1	14.2	14.3	14.4	14.5	14.6	14.7	14.8	14.9	5
6	15.0	15.1	15.2	15.3	15.4	15.5	15.6	15.7	15.8	15.9	6
7	16.0	16.1	16.2	16.3	16.4	16.5	16.6	16.7	16.8	16.9	7
8	17.0	17.1	17.2	17.3	17.4	17.5	17.6	17.7	17.8	17.9	8
9	18.0	18.1	18.2	18.3	18.4	18.5	18.6	18.7	18.8	18.9	9
10	19.0	19.1	19.2	19.3	19.4	19.5	19.6	19.7	19.8	19.9	10
11	20.0	20.1	20.2	20.3	20.4	20.5	20.6	20.7	20.8	20.9	11
12	21.0	21.1	21.2	21.3	21.4	21.5	21.6	21.7	21.8	21.9	12
13	22.0	22.1	22.2	22.3	22.4	22.5	22.6	22.7	22.8	22.9	13
14	23.0	23.1	23.2	23.3	23.4	23.5	23.6	23.7	23.8	23.9	14
15	24.0	24.1	24.2	24.3	24.4	24.5	24.6	24.7	24.8	24.9	15
16	25.0	25.1	25.2	25.3	25.4	25.5	25.6	25.7	25.8	25.9	16
17	26.0	26.1	26.2	26.3	26.4	26.5	26.6	26.7	26.8	26.9	17
18	27.0	27.1	27.2	27.3	27.4	27.5	27.6	27.7	27.8	27.9	18
19	28.0	28.1	28.2	28.3	28.4	28.5	28.6	28.7	28.8	28.9	19
20	29.0	29.1	29.2	29.3	29.4	29.5	29.6	29.7	29.8	29.9	20
21	30.0	30.1	30.2	30.3	30.4	30.5	30.6	30.7	30.8	30.9	21
22	31.0	31.1	31.2	31.3	31.4	31.5	31.6	31.7	31.8	31.9	22
23	32.0	32.1	32.2	32.3	32.4	32.5	32.6	32.7	32.8	32.9	23
24	33.0	33.1	33.2	33.3	33.4	33.5	33.6	33.7	33.8	33.9	24
25	34.0	34.1	34.2	34.3	34.4	34.5	34.6	34.7	34.8	34.9	25
26	35.0	35.1	35.2	35.3	35.4	35.5	35.6	35.7	35.8	35.9	26
27	36.0	36.1	36.2	36.3	36.4	36.5	36.6	36.7	36.8	36.9	27
28	37.0	37.1	37.2	37.3	37.4	37.5	37.6	37.7	37.8	37.9	28
29	38.0	38.1	38.2	38.3	38.4	38.5	38.6	38.7	38.8	38.9	29
30	39.0	39.1	39.2	39.3	39.4	39.5	39.6	39.7	39.8	39.9	30
31	40.0	40.1	40.2	40.3	40.4	40.5	40.6	40.7	40.8	40.9	31
32	41.0	41.1	41.2	41.3	41.4	41.5	41.6	41.7	41.8	41.9	32
33	42.0	42.1	42.2	42.3	42.4	42.5	42.6	42.7	42.8	42.9	33
34	43.0	43.1	43.2	43.3	43.4	43.5	43.6	43.7	43.8	43.9	34
35	44.0	44.1	44.2	44.3	44.4	44.5	44.6	44.7	44.8	44.9	35
36	45.0	45.1	45.2	45.3	45.4	45.5	45.6	45.7	45.8	45.9	36

Calculated by Julien A. Hall, M. Am. Soc. C. E.

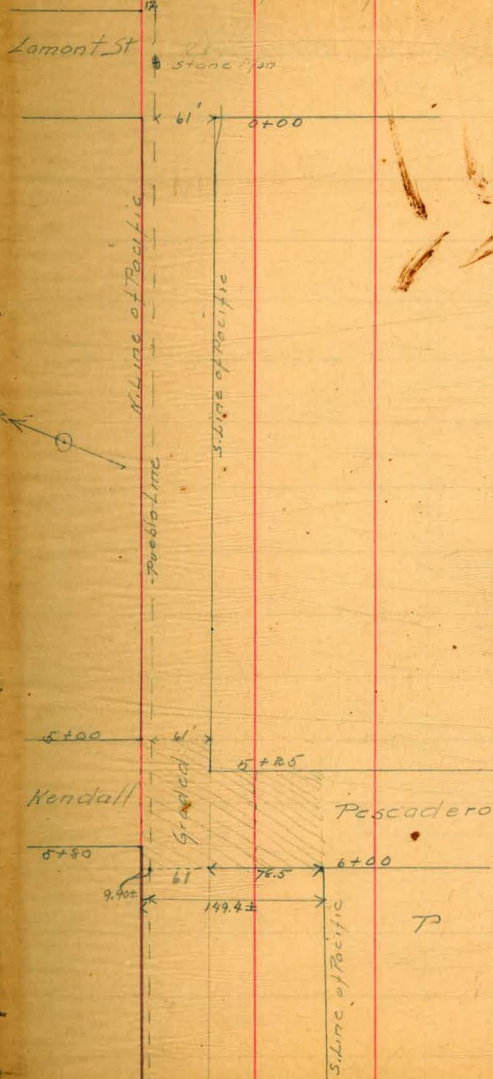
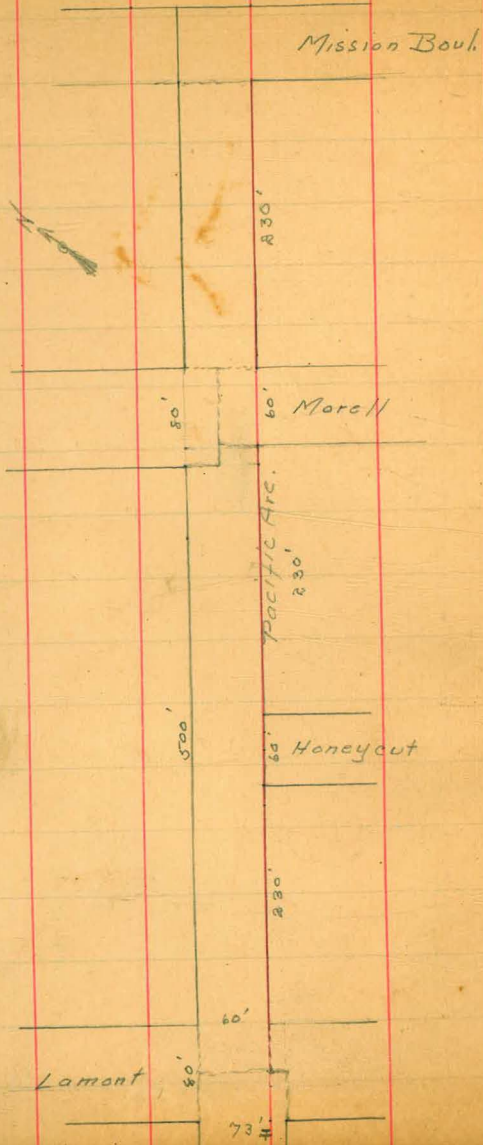
Return to City Engineers Office
City Hall, San Diego, Cal.

P-20
C-25
13
2.75
2.15
7.5
8.68

73
34
39 27
36
30

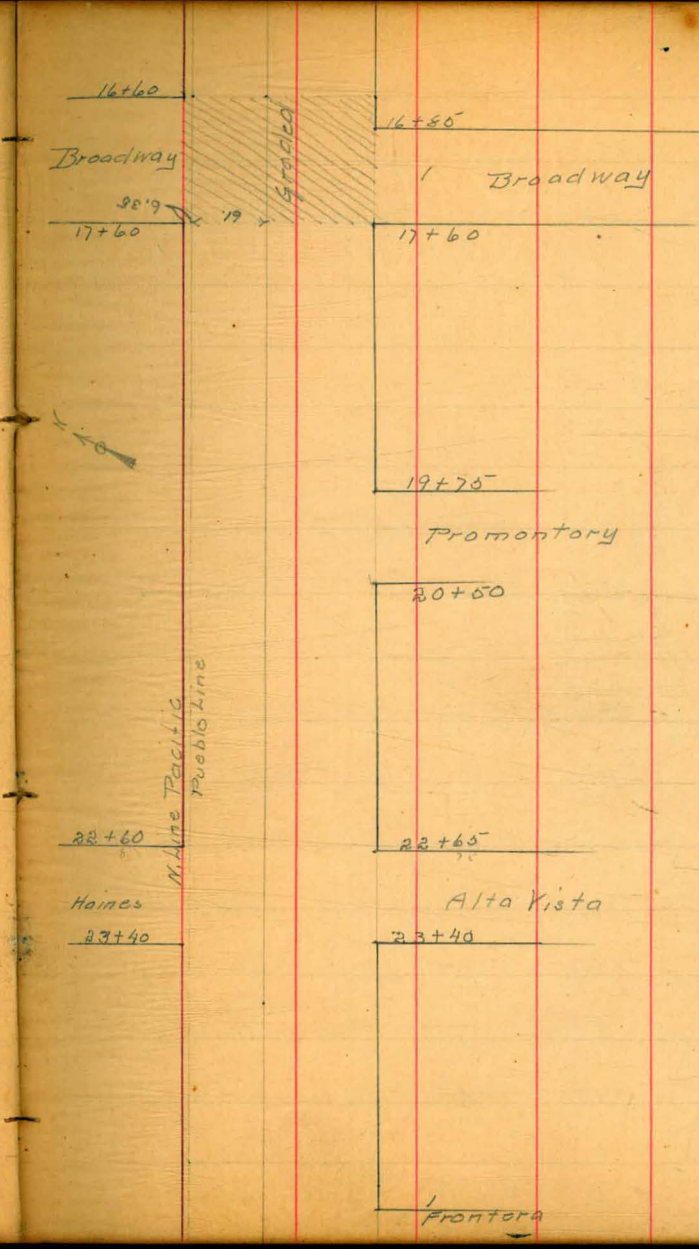
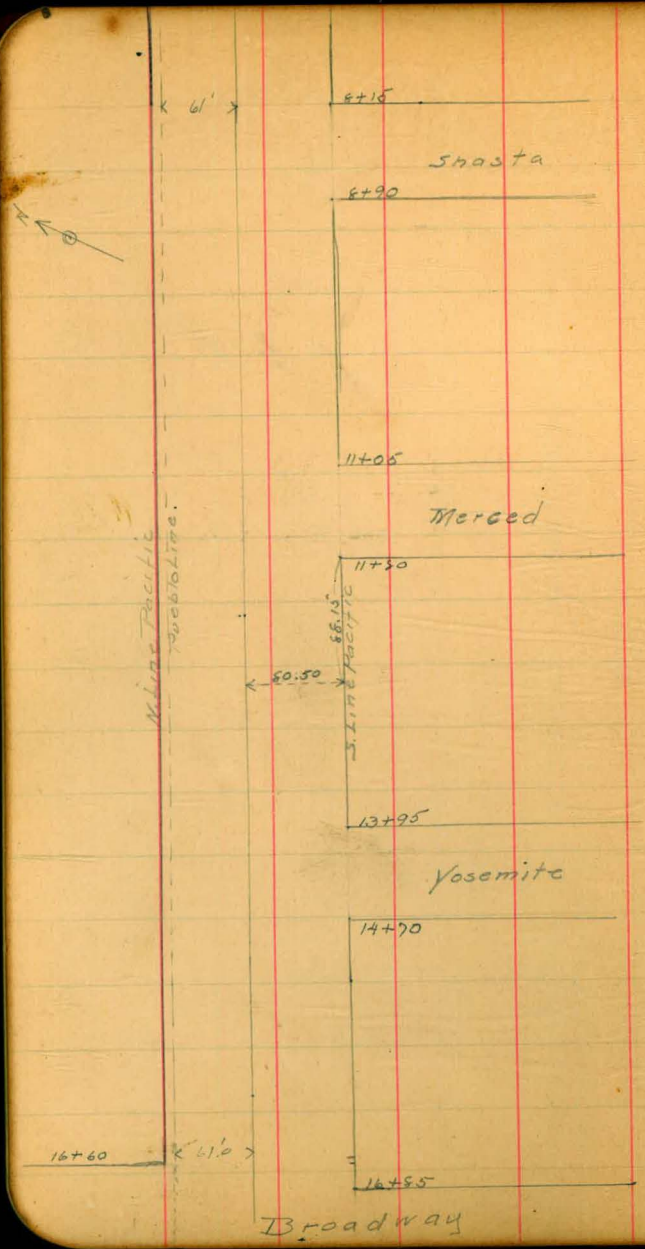
FROM
Loring's Book Store
SAN DIEGO, CAL.

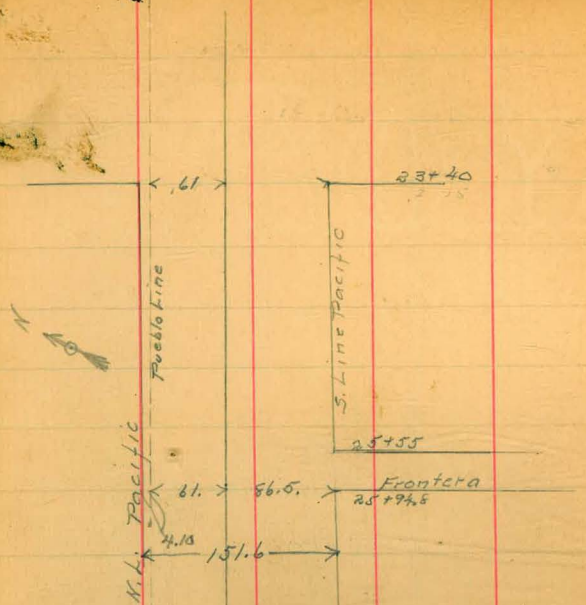
X section of Pacific Arc



POSTED

T





Pacific St widens from 149.4± at Sta #6
to 151.6± at 25+94.8

B. M. Brass Plug N.W. Cor Lamont + Grand 50.37

0.79	51.16	5.23	42.93
3.41	46.34	5.22	41.12
2.06	43.18	7.87	33.31
3.06	36.37	12.02	24.35
0.66	25.01	8.47	16.54

Xsection Pacific Arc, Mission Boul. West

N.T.L. Mission Boul. [16.54]

N.T.L.	0.29	16.83	12.20	9.6
C			10.90	5.9
1/4			8.50	8.3
2			8.80	8.0
1/4			8.80	8.0
C			8.70	8.1
S.T.L.			8.60	8.2

50' W of Miss. Boul.

S.T.L.			3.90	12.9
C			4.70	12.1
1/4			5.70	11.1
2			POSTED	11.0
1/4			5.80	11.0
C			6.50	10.3
N.T.L.			6.90	9.9



100' W. of Mission Boul

N.T.L.	16.83	0.60	16.2
C		0.80	16.0
1/4		1.90	14.9
Φ		1.70	15.1
1/4		1.50	15.3
C		0.80	16.0
S.T.L.		0.20	16.6
T.P.		0.29	16.54

150' W. of Miss. Boul.

S.T.L.	10.99	27.53	8.00	19.5
C			8.40	19.1
1/4			9.60	17.9
Φ			9.40	18.1
1/4			10.10	17.4
C			9.80	17.7
N.T.L.			10.00	17.5

200' W. of Miss. Boul.

N.T.L.	8.00	19.5
C	7.70	19.8
1/4	7.70	19.8
Φ	7.10	20.4
1/4	7.30	20.2
C	6.70	20.8
S.T.L.	6.50	21.0

230' W. of Miss Boul = E.T.L. Morell

S.T.L.	0.00	22.5
C	0.20	22.3
1/4	0.90	21.6
Φ	0.90	21.6
1/4	6.60	20.9
C	6.00	21.5
N.T.L.	6.80	21.0

E.C.L. Morell

N.P.L.	27.53	6.20	21.3
C		5.90	21.6
1/4		5.60	21.9
♀		5.00	22.5
1/4		5.00	22.5
C		5.00	22.5
S.P.L.		4.80	22.7

E 1/4 of Morell

S.P.L.		4.30	23.2
C		4.40	23.1
1/4		4.50	23.0
♀		4.50	23.0
1/4		4.60	22.7
C		5.20	22.3
N.P.L.		5.40	22.1

E. Morell

N.P.L.		4.60	22.9
C		4.50	23.0
1/4		4.40	23.1
♀		4.00	23.5
1/4		4.10	23.4
C		4.40	23.1
S.P.L.		4.40	23.1

W. 1/4 of Morell

S.P.L.		3.70	23.8
C		3.70	23.8
1/4		3.70	23.8
♀		3.50	24.0
1/4		4.30	23.2
C		4.20	23.3
N.P.L.		4.30	23.0

E.C.L. of Morell on N. = E.P.L. Morell on S.

N.P.L.	27.53	4.00	23.5
C		3.70	23.8
1/4		3.70	23.8
2		3.00	24.5
1/4		3.20	24.3
C		3.00	24.5
S.P.L.		3.20	24.3

E.P.L. Morell on N.

S.P.L.		2.00	25.5
C		2.20	25.3
1/4		2.60	24.9
2		2.30	25.2
1/4		2.70	24.8
C		2.90	24.6
M.P.L.		3.00	24.5
T.P.		0.62	26.91

10.71 37.62

50' W. of Morell

N.P.L.	37.62	10.50	27.1
C		10.40	27.2
1/4		10.70	26.9
2		10.30	27.3
1/4		10.30	27.3
C		10.00	27.6
S.P.L.		10.10	27.5

100' W. of Morell

S.P.L.		7.60	30.0
C		7.40	30.2
1/4		8.20	29.4
2		8.00	29.6
1/4		8.50	29.1
C		7.90	29.7
N.P.L.		7.50	29.8

100' W. of Morell

N.T.L.	37.62	6.00	31.6
C		6.30	31.3
1/4		7.00	30.6
1/2		6.80	30.8
3/4		7.30	30.3
C		7.30	30.3
S.T.L.		7.40	30.2

210' W of Morell = E.T.L. of Honeycutt.

S.T.L.		6.40	31.2
C		6.20	31.4
1/4		6.30	31.3
1/2		5.60	32.0
3/4		5.90	31.7
C		5.20	32.4
N.T.L.		5.20	32.4

E.C.L. of Honeycutt = 60' S' 1/2's

N.T.L.		4.50	33.1
C		4.70	32.9
1/4		5.50	32.1
1/2		5.30	32.3
3/4		5.80	31.8
C		5.80	31.8
S.T.L.		6.00	31.6

E 1/4 of Honeycutt

S.T.L.		6.10	31.5
C		5.90	31.7
1/4		5.90	31.7
1/2		5.20	32.4
3/4		5.00	32.6
C		4.50	33.1
N.T.L.		4.20	33.4

£ of Honeycutt

N.P.L.	37.62	4.00	33.6
C		4.20	33.4
1/4		5.10	32.5
♀		5.00	32.6
1/4		5.50	32.1
C		5.50	32.1
S.P.L.		5.70	31.9

W 1/4 of Honeycutt

S.P.L.		5.80	31.8
C		5.70	31.9
1/4		5.40	32.2
♀		4.70	32.9
1/4		5.00	32.6
C		4.20	33.4
N.P.L.		4.00	33.6

N.C.L. of Honeycutt

N.P.L.		3.90	33.7
C		4.20	33.4
1/4		4.90	32.7
♀		4.60	33.0
1/4		5.40	32.2
C		5.30	32.3
S.P.L.		5.60	32.0

N.P.L. Honeycutt

S.P.L.		5.40	32.2
C		5.00	32.6
1/4		5.10	32.5
♀		4.60	33.0
1/4		4.60	33.0
C		4.20	33.4
N.P.L.		3.60	33.8

POSTED

50' W of Honeycutt

N.P.L.	37.62	3.40	34.2
C		3.60	34.0
1/4		4.10	33.5
♀		4.10	33.5
1/4		4.90	32.7
C		4.90	32.7
S.P.L.		5.20	32.4

100' W of Honeycutt

S.P.L.		5.40	32.2
C		5.20	32.4
1/4		5.20	32.4
♀		4.40	33.2
1/4		4.70	32.9
C		4.00	33.6
N.P.L.		3.80	33.8

150 W. of Honeycutt

N.P.L.		3.50	34.1
C		3.80	33.8
1/4		4.60	33.0
♀		4.30	33.3
1/4		4.90	32.7
C		5.00	32.6
S.P.L.		5.30	32.3

200' W. of Honeycutt

S.P.L.		5.30	32.3
C		4.80	32.8
1/4		4.80	32.8
♀		4.20	33.4
1/4		4.40	33.2
C		3.80	33.8
N.P.L.		3.60	34.0

230' W of Honey cutt. = E.P.L. of Lamont

N.P.L.	37.62	3.20	34.4
C		3.50	34.1
1/4		4.30	34.3
♀		4.10	33.5
1/4		4.40	33.2
C		4.40	33.2
S.P.L.		4.60	33.0

N.C. Lot of Lamont = 50' wide 20' walks

S.P.L.		5.00	32.6
C		4.60	33.0
1/4		4.60	33.0
♀		4.40	33.2
1/4		4.50	33.1
C		3.60	34.0
N.P.L.		3.30	34.3

W 1/4 of Lamont

N.P.L.		3.20	34.4
C		3.60	34.0
1/4		4.00	33.6
♀		4.00	33.6
1/4		4.20	33.4
C		4.40	33.2
S.P.L.		4.70	32.9

♀ of Lamont

S.P.L.		4.60	33.0
C		4.00	33.6
1/4		3.80	33.8
♀		3.50	34.1
1/4		3.30	34.3
C		3.10	34.5
N.P.L.		2.70	34.9

see sketch
Page 1

POSTED

N 1/4 of Lamont

N.P.L.	37.62	3.00	34.6
C		3.50	34.1
1/4		3.70	33.9
2		4.00	33.6
1/4		4.30	33.3
C		4.70	32.9
S.P.L.		5.30	32.3

W.C. L. of Lamont

S.P.L.	4.90	32.7
C	4.20	33.4
1/4	4.00	33.6
2	3.70	33.9
1/4	3.60	34.0
C	3.10	34.5
N.P.L.	2.80	34.8
T.T.	3.30	34.32

11.14 45.46

W.T.L. of Lamont = 0+50 - See sketch Page 11

N.T.L.	45.46	10.70	34.8
C		11.10	34.4
1/4		11.50	34.0
2		11.50	34.0
1/4		11.70	33.8
C		11.90	33.6
S.T.L.		12.20	33.3

0+50

S.P.L.	11.70	33.8
C	11.70	33.8
1/4	11.50	34.0
2	11.10	34.4
1/4	10.90	34.6
C	10.70	34.8
N.T.L.	10.30	35.2

POSTED

1700

N.P.L.	45.46	9.50	36.0
C		9.80	36.0
1/4		10.20	35.3
♀		10.40	35.1
1/4		10.70	34.8
C		10.80	34.7
S.P.L.		10.90	34.6

1750

S.P.L.		9.90	35.6
C		9.80	35.7
1/4		9.60	35.9
♀		9.30	36.2
1/4		9.20	36.3
C		8.90	36.6
N.P.L.		8.50	37.0

2700

N.P.L.		7.30	38.2
C		7.50	38.0
1/4		7.80	37.7
♀		8.00	37.5
1/4		8.30	37.2
C		8.50	37.0
S.P.L.		8.60	36.9
T.P.		0.96	44.50

2750

S.P.L.	6.44	50.94	12.00	38.9
C			12.00	38.9
1/4			12.00	38.9
♀			11.80	39.1
1/4			11.80	39.1
C			11.40	39.5
N.P.L.			11.10	39.8

12

3+00

N.T.L.	50.94	9.50	41.4
C		9.60	41.3
1/4		9.80	41.1
¢		10.90	40.8
1/4		10.20	40.7
C		10.20	40.7
S.T.L.		9.80	41.1

3+50

S.T.L.		8.00	42.9
C		7.90	43.0
1/4		8.00	42.9
¢		7.80	43.1
1/4		7.80	43.1
C		7.80	43.1
N.T.L.		7.40	43.5

4+00

N.T.L.		6.00	
C		6.00	44.9
1/4		6.00	44.9
¢		6.00	44.9
1/4		6.40	44.5
C		6.30	44.6
S.T.L.		6.30	44.6

4+50

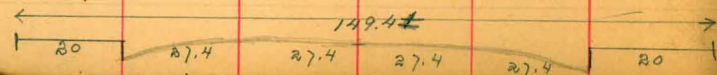
S.T.L.		5.30	45.6
C		5.10	45.8
1/4		5.00	45.9
¢		4.80	46.1
1/4		4.70	46.2
C		4.70	46.2
N.T.L.		4.60	46.3

5+00 = E.P.L. of Kendall

N.T.P.L.	50.94	4.00	46.9
C		4.00	46.9
1/4		4.10	46.8
1/2		4.00	46.9
3/4		4.00	46.9
C		3.80	47.1
S.T.P.L.		3.70	47.2
T.P.		3.39	47.55

6+00 = W.T.P.L. of Pescadero

S.T.P.L.	56.43	8.70	47.7
C		8.50	47.9
1/4		8.10	48.3
1/2		8.10	48.3
3/4	9.24	9.10	47.7
C		8.60	48.2
N.T.P.L.		7.50	49.0



6+50

N.T.P.L.	56.79	8.60	48.2
C		8.20	48.6
1/4		8.30	48.5
1/2	56.43	7.50	49.3
3/4		7.20	49.6
C		7.50	49.3
S.P.L.		7.50	49.3

7+00

S.T.P.L.		6.20	50.6
C		6.30	50.5
1/4		6.40	50.4
1/2		6.50	50.3
3/4	56.79	7.70	49.1
C		7.60	49.2
N.T.P.L.		7.70	49.1

7+50

N.P.L.	56.79	6.60	50.2
C		6.70	50.1
1/4		6.60	50.2
2	56.43	5.40	51.4
1/4		5.70	51.1
C		5.30	51.5
S.P.L.		5.20	51.6

— 8+15 = E.T.L. of Shasta — 75' wide

S.T.L.		3.90	52.9
C		3.80	53.0
1/4		4.10	52.7
2		4.10	52.7
1/4	56.79	5.20	51.6
C		5.60	51.2
N.P.L.		5.70	51.1

E.C.L. Shasta

N.P.L.	56.79	5.40	51.4
C		5.30	51.5
1/4		4.90	51.9
2	56.43	3.80	52.6
1/4		3.80	52.6
C		3.80	52.6
S.P.L.		4.10	52.3

E 1/4 of Shasta

S.P.L.		3.60	52.8
C		3.70	52.7
1/4		3.70	52.7
2		3.90	52.5
1/4	56.79	4.80	52.0
C		5.00	51.8
N.P.L.		5.30	51.5

Shasta

25
30
40

E of Shasta

N.P.L.	56.79	5.20	51.6
C		5.10	51.7
1/4		4.70	52.1
Φ	56.43	3.80	52.6
1/4		3.70	52.7
C		3.60	52.8
S.P.L.		3.50	52.9

W 1/4 of Shasta

S.P.L.		3.60	52.8
C		3.60	52.8
1/4		3.60	52.8
Φ		3.50	52.9
1/4	56.79	4.60	51.8
C		4.90	51.5
N.P.L.		5.00	51.4

N.C.L. of Shasta

N.P.L.	56.79	5.00	51.8
C		4.90	51.9
1/4		4.40	52.4
Φ	56.43	3.40	53.0
1/4		3.50	52.9
C		3.60	52.8
S.P.L.		3.70	52.7

W.F.L. Shasta = 5+90

S.P.L.		3.40	53.0
C		3.50	52.9
1/4		3.50	52.9
Φ		3.60	52.8
1/4	56.79	4.50	52.3
C		4.70	52.1
N.P.L.		5.00	51.8

9+50

N.P.L.	56.79	5.20	51.6
C		5.40	51.4
1/4		5.20	51.6
ϕ	56.43	4.20	52.2
1/4		4.30	52.1
C		4.20	52.2
S.P.L.		4.20	52.2

10+00

S.P.L.		5.70	50.7
C		6.00	50.4
1/4		5.60	50.8
ϕ		6.00	50.4
1/4	56.79	6.40	50.4
C		6.40	50.4
N.P.L.		6.30	50.5

10+50

N.P.L.	56.79	7.50	49.3
C		7.90	48.9
1/4		8.00	48.8
ϕ	56.43	7.50	48.9
1/4		7.70	48.7
C		7.80	48.6
S.T.L.		7.90	48.5

11+05 = EL. of Merced

S.P.L.		10.00	46.4
C		10.10	46.3
1/4		10.20	46.2
ϕ		9.60	46.5
1/4	56.79	10.00	46.8
C		9.50	47.3
N.P.L.		9.40	47.4

POSTED

17

E.C.L. of Merced

N.P.L.	56.79	9.80	47.0
C		10.10	46.7
1/4		10.50	46.3
♀	56.43	10.40	46.0
1/4		10.50	45.9
C		10.60	45.8
S.P.L.		10.80	45.6

E 1/4 of Merced

S.P.L.		11.00	45.4
C		10.80	45.6
1/4		10.50	45.9
♀		10.60	45.8
1/4	56.79	10.70	46.3
C		10.50	45.9
N.P.L.		10.70	45.7

E of Merced

N.P.L.	56.79	10.90	45.9
C		10.60	46.2
1/4		10.80	46.6
♀	56.43	10.80	45.6
1/4		10.70	45.7
C		10.90	45.5
S.P.L.		11.10	45.3

W 1/4 of Merced

S.P.L.		11.30	45.1
C		11.20	45.2
1/4		11.30	45.1
♀		11.00	45.4
1/4	56.79	10.60	46.2
C		10.50	46.3
N.P.L.		10.10	46.7
T.P.		10.35	46.44

3.68 50.09

W.C.L. of Merced

N.P.L.	50.09	4.00	46.1
C		4.40	45.7
1/4		4.60	45.5
2	56.43	11.40	45.0
1/4		11.60	44.8
C		11.60	44.8
S.P.L.		11.60	44.8

W.P.L. of Merced = 11.60

S.P.L.		12.20	44.2
C		12.00	44.4
1/4		12.80	44.6
2		11.60	44.8
1/4	50.09	5.00	45.1
C		4.70	45.4
N.P.L.		4.40	45.7
T.P.	49.15	4.95	44.23
	12.20	56.43	

12+00

N.P.L.	50.09	4.60	45.5
C		4.60	45.5
1/4		5.40	44.7
2	49.15	4.50	44.7
1/4		5.00	44.2
C		5.20	44.0
S.P.L.		5.00	44.2

12+50

S.P.L.		6.00	43.2
C		6.10	43.1
1/4		5.60	43.6
2		5.50	43.7
1/4	50.09	6.20	43.9
C*		5.60	44.5
N.P.L.		5.20	44.9

POSTED

13+00

N.P.L.	50.09	5.50	44.6
C		6.10	44.0
1/4		6.20	43.9
♀	49.18	5.50	43.7
1/4		5.80	43.4
C		6.10	43.1
S.P.L.		6.00	43.2

13+50

S.P.L.		6.00	43.2
C		6.00	43.2
1/4		5.80	43.4
♀		5.50	43.7
1/4	50.09	6.20	43.9
C		6.00	44.1
N.P.L.		5.60	44.5

13+95 = E.P.L. Yosemite = 75' wide 17' walk 20

N.P.L.	50.09	5.10	45.0
C		5.30	44.8
1/4		5.80	44.3
♀	49.18	5.30	43.9
1/4		5.60	43.6
C		5.90	43.3
S.P.L.		5.70	43.5

E.C.L. of Yosemite

S.P.L.		5.70	43.5
C		6.00	43.2
1/4		5.50	43.7
♀		5.00	44.2
1/4	50.09	5.80	44.3
C		5.20	44.9
N.P.L.		5.20	44.9

E. 1/2 of Yosemite

N.P.L.	50.09	5.00	45.1
C		5.20	44.9
1/4		5.70	44.4
♀	49.18	5.10	44.1
1/4		5.50	43.7
C		5.90	43.3
S.P.L.		5.80	43.4

E of Yosemite

S.P.L.		5.90	43.3
C		5.90	43.3
1/4		5.50	43.7
♀		5.00	44.2
1/4	50.09	5.50	44.6
C		5.30	44.8
N.P.L.		4.90	45.2

W. 1/2 of Yosemite

N.P.L.	50.09	5.10	45.0
C		5.10	45.0
1/4		5.60	44.5
♀	49.18	5.10	44.1
1/4		5.50	43.7
C		5.90	43.3
S.P.L.		6.00	43.2

W.C.L. of Yosemite

S.P.L.		6.00	43.2
C		5.70	43.5
1/4		5.60	43.6
♀		5.90	44.1
1/4	50.09	5.20	44.9
C		5.20	44.9
N.P.L.		4.90	45.2

N.P.L. of Yosemite = 1470

N.P.L.	50.09	5.00	45.1
C		4.90	45.2
1/4		4.50	45.6
♀	49.18	4.80	44.4
1/4		5.30	43.9
C		5.90	43.3
S.P.L.		5.90	43.3

15+00

S.P.L.		5.50	43.7
C		5.60	40.7
1/4		5.00	44.2
♀		4.70	44.5
1/4	50.09	5.10	45.0
C		4.90	45.2
N.P.L.		4.60	45.5

15+50

N.P.L.	50.09	4.30	45.8
C		4.50	45.6
1/4		4.90	45.2
♀	49.18	4.80	45.0
1/4		4.70	44.5
C		4.80	44.4
S.P.L.		4.80	44.4

16+00

S.P.L.		4.60	44.6
C		4.50	44.7
1/4		4.10	45.1
♀		3.80	45.4
1/4	50.09	4.40	45.7
C		4.20	45.9
N.P.L.		4.20	45.9

16+60 = E.L. of Broadway on N.

N.P.L.	50.09	3.50	46.6
N.C.		3.70	46.4
N 1/4		3.80	46.3
Q		4.10	46.0
T.P.		3.38	46.71
Q	247	49.18	3.80 45.4
S 1/4		3.70	45.5
S.C.L.		4.10	45.1
S.P.L.		3.40	45.8

16+80 = E.L. Broadway on S.

S.P.L.		3.20	46.0
C		3.90	45.3
1/4		3.70	45.5
Q		3.70	45.5

Hub N.W.
Pac. + Bdy

17+60 = N.P.L. of Broadway [46.71]

23

N.P.L.	7.54	54.85	7.60	46.7
C			8.00	46.3
1/4			8.40	45.9
Q			8.30	46.0
1/4			8.50	45.8
C			8.50	45.8
S.P.L.			8.60	45.7

18+00

S.P.L.			8.80	45.5
C			8.50	45.8
1/4			9.00	45.3
Q			8.70	45.6
1/4			8.00	46.3
C			7.50	46.8
N.P.L.			6.80	47.5

18+50

N.P.L.	54.25	5.80	48.5
C		6.50	47.8
1/4		7.30	47.0
∅		7.90	46.4
1/4		8.50	45.8
C		8.90	45.4
S.P.L.		9.10	45.2

19+00

S.P.L.		8.90	45.4
C		8.60	45.7
1/4		8.00	46.3
∅		7.20	47.1
1/4		6.50	47.8
C		6.60	47.7
N.P.L.		4.70	49.6

19+50

N.P.L.		3.40	50.9
C		4.40	49.9
1/4		5.10	49.2
∅		6.40	47.9
1/4		7.20	47.1
C		8.00	46.3
S.P.L.		8.20	46.1

19+75 = E.L. of Promontory = 75'

S.P.L.		8.20	46.1
C		7.70	46.6
1/4		6.70	47.6
∅		5.80	48.5
1/4		4.60	49.7
C		3.60	50.7
N.P.L.		2.70	51.6

24

E. C. of Promontory

N.P.L.	54.25	1.90	52.4
C		2.70	51.6
1/4		3.70	50.6
1/2		5.20	49.1
3/4		6.30	48.0
C		7.10	47.2
S.P.L.		7.70	46.6

E 1/4 of Promontory

S.P.L.		7.60	46.7
C		7.00	47.3
1/4		5.90	48.4
1/2		4.80	49.5
3/4		3.30	51.0
C		2.40	51.9
N.P.L.		1.70	52.6

E of Promontory

N.P.L.		1.50	52.8
C		2.00	52.3
1/4		3.00	51.3
1/2		4.50	49.8
3/4		5.60	48.7
C		6.70	47.6
S.P.L.		7.40	46.9

W 1/4 of Promontory

S.P.L.		7.30	47.0
C		6.60	46.7
1/4		5.30	49.0
1/2		4.00	50.3
3/4		2.50	51.5
C		1.80	52.5
N.P.L.		1.30	53.0

W.C.L. of Promontory

N.P.L.	54.25	1.00	53.3
C		1.50	52.8
1/4		2.20	52.1
2		3.60	50.7
1/4		5.00	49.3
C		6.30	48.0
S.T.P.L.		6.90	47.4

20+50 = W.T.L. of Promontory

S.T.P.L.		6.20	48.1
C		5.50	48.8
1/4		4.40	49.9
2		3.00	51.3
1/4		1.80	52.5
C		1.10	53.2
N.P.L.		0.80	53.5
T.P.		1.42	52.83

7.69 60.52

21+00

N.P.L.	60.52	5.80	54.7
C		5.90	54.6
1/4		6.30	54.2
2		7.00	53.5
1/4		7.90	52.6
C		9.20	51.3
S.T.P.L.		9.90	50.6

21+00

S.T.P.L.		7.00	53.5
C		6.40	54.1
1/4		5.80	55.2
2		5.30	55.2
1/4		4.80	55.7
C		5.00	55.5
N.P.L.		5.00	55.5

POSTED

22+00

N.T.L.	60.52	5.00	55.6
C		4.50	56.0
1/4		3.80	56.7
1/2		3.90	56.6
1/4		4.50	56.0
C		4.80	55.7
S.T.L.		4.80	55.7

22+60 = E.L. of Haines on H.

1/2		4.60	55.9
1/4		5.00	55.5
C		5.80	54.7
N.T.L.		6.40	54.1

22+65 = E.L. of Alta Vista

1/2		4.60	55.9
1/4		4.60	55.9
C		4.60	55.9
S.T.L.		4.70	55.8

E.C.L. of Haines

27

N.T.L.	60.52	7.40	53.1
C		6.80	53.7
1/4		6.20	54.3
1/2		5.50	55.0

E.C.L. of Alta Vista

1/2		5.60	54.9
1/4		5.30	55.2
C		5.10	55.4
S.T.L.		5.10	55.4

E 1/4 of Alta Vista

S.P.L.		5.50	55.0
C		5.50	55.0
1/4		5.60	54.9

POSTED

1/2		6.00	54.5
1/4		6.20	54.3
1/2		6.70	53.8
C		7.30	53.2
N.T.L.		8.10	52.4

E of Haines

N.P.L.	60.52	8.70	51.8
B		7.90	52.6
1/4		7.00	53.5
E		6.40	54.1
E	E of Alta Vista	6.50	54.0
4		6.00	54.5
B		5.90	54.6
S.P.L.		5.90	54.6

W. 1/4 of Alta Vista

S.P.L.		6.20	54.3
C		6.30	54.2
1/4		6.50	54.0
E		7.20	53.3
E	W 1/4 of Haines	7.40	53.1
1/4		7.70	52.8
C		8.70	51.8
N.P.L.		9.40	51.1

N.C.L. of Haines

N.P.L.	60.52	10.30	50.2
C		9.40	51.1
1/4		8.50	52.0
E		7.70	52.8
	W.C.L. of Alta Vista		
E		7.70	52.8
1/4		7.20	53.3
C		6.70	53.8
S.P.L.		6.60	53.9

83+40 N.P.L. of Haines = N.P.L. of Alta Vista

S.P.L.		8.00	52.5
C		8.20	52.3
1/4		8.90	51.6
E		19.60	50.9
1/4		10.10	50.4
C		10.90	49.6
N.P.L.		12.50	48.0
T.P.		12.73	48.09

24700

N.P.h	1.47	49.56	6.80	42.8
⊙			6.20	43.4
1/4			5.70	43.9
⊙			5.10	44.5
1/4			4.10	45.5
⊙			3.00	46.6
S.P.h			2.70	46.9

24750

S.P.h			8.60	41.0
⊙			8.50	41.1
1/4			9.00	40.6
⊙			9.30	40.3
1/4			10.00	39.6
⊙			10.10	39.5
N.P.h			10.70	38.9

POSTED

25700

N.P.h	49.56	13.90	35.7
⊙		13.90	35.7
1/4		13.70	35.9
⊙		13.50	36.2
1/4		13.20	36.6
⊙		13.00	36.6
S.P.h		12.70	36.9
T.P.		12.81	36.75

25755 = F.h. of Frontera

S.P.h	0.99	37.74	4.80	32.9
⊙			4.90	32.8
1/4			5.10	32.6
⊙			5.00	32.7
1/4			5.20	32.5
⊙			5.10	32.6
N.P.h			5.00	32.7
			5.70	32.0

POSTED

29

25765

N.P.h	37.77	5.70	32.0
C		6.00	31.7
1/4		5.90	31.8
1/2		5.70	32.0
1/4		5.60	32.1
C		5.60	32.1
S.P.h		5.60	32.1

25775

S.P.h		6.10	31.6
C		6.20	31.5
1/4		6.30	31.4
1/2		6.30	31.4
1/4		6.60	31.1
C		6.70	31.0
N.P.h		6.40	31.3

POSTED

30

25785

N.P.h	37.77	6.80	30.9
C		7.00	30.7
1/4		7.10	30.6
1/2		6.90	30.8
1/4		6.80	30.9
C		6.60	31.1
S.P.h		6.60	31.1

31/1/POSTED
POC

25794.8 = W.L. of Frontier

S.P.h		7.20	30.5
C		7.10	30.6
1/4		7.30	30.4
1/2		7.20	30.5
1/4		7.40	30.3
C		7.40	30.3
N.P.h		7.20	30.5

X sec. FRONTERA - Pacific to La Playa

S.T.L. of Pacific

E.P.L.	41.88	8.90	33.0
C		10.20	31.7
1/4		10.80	31.1
1/2		11.40	30.5

50' S. of Pacific

1/2		11.40	30.5
1/4		10.80	31.1
C		10.30	31.6
E.P.L.		8.70	33.2

100' S. of Pacific

E.P.L.		9.00	32.9
C		10.70	31.2
1/4		11.00	30.9
1/2		11.50	30.4

POSTED

N. line of Fortuna Park Addition

	39.8		Pacific	
	95.10	120		
		525'		
		75'	Sunset	
		600'	Frontera	
		25'	Roadset	
		600'		
	39.6			
	96.10	120	La Playa	[52.40]
0.85	53.83	12.76	40.59	
1.31	41.88			

150' S. of Frontera

♀	41.88	12.00	29.9
1/4		11.40	30.5
C		10.80	31.1
E.P.L.		9.10	32.8
200' S. of Frontera			
E.P.L.		9.80	32.1
C		11.50	30.4
1/4		12.00	29.9
♀		12.40	29.5
250' S. of Frontera			
♀		13.20	28.7
1/4		12.70	29.2
C		12.20	29.7
E.P.L.		10.70	31.2
T.P.		12.83	29.05
4.26	33.31		

300' S. of Frontera

E.P.L.	41.88	12.00	29.9
C		13.40	28.5
1/4	33.31	5.20	28.1
♀		5.60	27.7
350' S. of Frontera			
♀		6.60	26.7
1/4		6.10	27.2
C		5.70	27.6
E.P.L.		4.60	28.7

400' S. of Frontera

E.P.L.		5.60	27.7
C		6.40	26.9
1/4		6.70	26.6
♀		7.50	25.8

POS. 22

450' S. of Frontera

☽	33.31	8.70	24.6
1/4		8.20	25.1
C		7.70	25.6
E.P.L.		6.60	26.7

500' S. of Frontera

E.P.L.		7.60	25.7
C		8.60	24.7
1/4		9.00	24.3
☽		9.50	23.8

525' S. of Frontera = N.L. Sunset

☽		9.90	23.4
1/4		9.40	23.9
C		9.00	24.3
E.P.L.		8.10	25.2

N.C.L. of Sunset

E.P.L.		8.20	25.1
C		9.40	23.9
1/4		9.80	23.5
☽		10.10	23.2

N.W. of Sunset

☽		10.40	22.9
1/4		10.00	23.3
C		9.50	23.8
E.P.L.		8.50	24.8

☽ of Sunset

E.P.L.		8.60	24.7
C		9.80	23.5
1/4		10.30	23.0
☽		10.70	22.6

P.U.---

5/4 of Sunset

☽	33.31	10.80	43.5
1/4		10.50	43.8
C		10.00	44.3
E.P.L.		9.00	45.5

S.C.L. of Sunset

E.P.L.		9.00	45.5
C		10.20	44.1
1/4		10.70	43.6
☽		11.00	43.3

S.T.P.A. of Sunset

☽		11.60	42.7
1/4		11.20	43.1
C		10.70	43.6
E.P.L.		9.90	44.4
T.P.		12.64	20.67

0.42 21.50

50' S. of Sunset

E.P.L.	33.31	10.70	22.6
C		12.00	21.3
1/4		12.40	20.9
☽		12.80	20.5

100' S. of Sunset

☽		12.40	18.9
1/4		13.80	19.5
C		13.50	19.8
E.P.L.		12.40	20.9

150' S. of Sunset

E.P.L.	21.50	2.40	19.1
C		3.40	18.1
1/4		3.70	17.8
☽		4.20	17.3

200' S. of Sunset

♀	21.50	5.90	15.6
1/4		5.50	16.0
C		5.20	16.3
E.P.L.		4.20	17.3

250' S. of Sunset

E.P.L.		5.80	15.7
C		7.00	14.5
1/4		7.30	14.2
♀		7.60	13.9

300' S. of Sunset

♀		9.00	12.5
1/4		8.80	12.7
C		8.50	13.0
E.P.L.		7.30	14.2

350' S. of Sunset

E.P.L.		8.60	12.9
C		9.60	11.9
1/4		9.90	11.6
♀		10.20	11.3

400' S. of Sunset

♀		11.40	10.1
1/4		11.10	10.4
C		10.60	10.9
E.P.L.		9.50	12.0

450' S. of Sunset

E.P.L.		10.40	11.1
C		11.50	10.0
1/4		11.90	9.6
♀		12.30	9.2

POSTED

500' S. of Sunset

♀	21.50	13.10	8.4
¼		13.00	8.5
C		12.40	9.1
E.P.L.		10.90	10.6

550' S. of Sunset

E.P.L.		10.70	10.8
C		12.20	9.3
¼		12.70	8.8
♀		13.60	7.9

600' S of Sunset = N.P.L. of Roosevelt

♀		11.00	10.5
¼		10.10	11.4
C		9.40	12.1
E.P.L.		8.30	10.2

N.C.L. of Roosevelt

E.P.L.		7.60	13.9
C		8.90	12.6
¼		9.50	12.0
♀		10.40	11.1

N ¼ of Roosevelt

♀		10.60	10.9
¼		9.40	12.1
C		8.80	12.7
E.P.L.		7.40	14.1

♀ of Roosevelt

E.P.L.		7.20	14.3
C		8.90	12.6
¼		9.70	11.8
♀		10.60	10.9

POSTED

S. 1/4 of Roosevelt

¢	21.50	10.20	10.7
1/4		9.90	11.6
C		8.80	12.7
E.P.L.		6.80	14.7

S.C.L. of Roosevelt

E.P.L.		5.90	15.6
C		8.20	13.3
1/4		9.40	12.1
¢		10.20	11.3

S.P.L. of Roosevelt

¢		9.30	12.2
1/4		8.30	13.2
C		7.00	14.5
E.P.L.		4.40	17.1
T.P.		2.52	18.98

7.00 26.03

50' S. of Roosevelt

E.P.L.	26.03	4.70	21.3
C		7.30	18.7
1/4		8.60	17.4
¢		10.20	15.8

100' S. of Roosevelt

¢		6.60	19.4
1/4		5.40	20.6
C		4.30	21.7
E.P.L.		2.20	23.8

150' S. of Roosevelt

E.P.L.		0.70	25.3
C		2.40	20.6
1/4		3.10	22.9
¢		4.10	21.9

POSTED

200' S. of Roosevelt

¢	26.03	3.40	22.6
1/4		2.60	23.4
0		2.00	24.0
F.P.L.		1.00	25.0

250' S. of Roosevelt

E.P.L.		1.20	24.8
C		2.00	24.0
1/4		2.60	23.4
¢		3.30	22.7

300' S. of Roosevelt

¢		3.50	22.5
1/4		3.20	22.8
3/8		2.80	23.2
E.P.L.		2.00	24.0

350' S. of Roosevelt

E.P.L.		2.80	23.2
C		3.40	22.6
1/4		3.70	22.0
¢		3.90	22.1

400' S. of Roosevelt

¢		4.60	21.4
1/4		4.40	21.6
C		4.10	21.9
E.P.L.		3.40	22.6

450' S. of Roosevelt

E.P.L.		4.10	21.9
C		4.70	21.3
1/4		4.90	21.1
¢		5.10	20.9

POSTED

500' S. of Prosserelt

ϕ	26.03	5.80	20.2	5.8
1/4		5.50	20.5	
C		5.30	20.7	
E.T.L.		4.90	21.1	

550' S. of Prosserelt

E.T.L.		5.50	20.5
C		5.80	20.2
1/4		6.10	19.9
ϕ		6.30	19.7

600' S. of Prosserelt = N.L. La Playa

ϕ		6.70	19.3
1/4		6.60	19.4
C		6.20	19.8
E.T.L.		6.00	20.0
T.P.		5.94	21.09

Hub. N.E. Cor

La Playa Br.

Xsections GARNETS T.

Jewel to Allison

B.M.	S.W. Brass Plug	Lamont + Garnet	65.69
T.P.	4.38	70.27	5.01 6.5.26
	6.17	71.43	2.40. 69.03
	3.11	72.14	

W.T.L. of Jewel

N.P.L.	72.14	2.60	69.5
C		2.80	69.3
1/4		3.40	68.7
ϕ		3.40	68.7
1/4		3.30	68.8
C		3.20	68.9
S.T.L.		3.10	69.0

POSTED

50' W of Jewel

S.T.L.	72.14	3.20	68.9
C		3.10	69.0
1/4		3.10	69.0
2		3.00	69.1
1/4		3.20	68.9
C		3.20	68.9
N.T.L.		3.10	69.0

100' W of Jewel

N.T.L.		3.50	68.6
C		3.40	68.7
1/4		3.50	68.6
2		3.20	68.9
1/4		3.40	68.7
C		3.40	68.7
S.T.L.		3.40	68.7

150' W. of Jewel

S.T.L.		3.40	68.7
C		3.80	68.3
1/4		3.70	68.4
2		3.40	68.7
1/4		3.80	68.3
C		3.70	68.4
N.T.L.		4.10	68.0

200' W of Jewel

N.T.L.		4.40	67.7
C		4.30	67.8
1/4		4.20	67.9
2		3.80	68.3
1/4		4.00	68.1
C		4.20	67.9
S.T.L.		3.70	68.4

POST

250' W. of Jewel

S.P.L.	72.14	3.80	68.3
C		4.20	67.9
1/4		4.30	67.8
ϕ		4.40	67.7
1/4		4.60	67.5
C		4.80	67.3
N.P.L.		5.20	66.9

300' W. of Jewel

N.P.L.		6.30	65.8
C		5.80	66.3
1/4		5.50	66.6
ϕ		5.00	67.1
1/4		4.80	67.3
C		4.60	67.5
S.P.L.		4.10	68.0

350' W. of Jewel

S.P.L.		5.80	66.3
C		6.50	65.6
1/4		6.90	65.2
ϕ		7.00	65.1
1/4		7.30	64.8
C		7.50	64.6
N.P.L.		7.70	64.4

400' W. of Jewel

N.P.L.		8.40	63.7
C		8.30	63.8
1/4		8.30	63.8
ϕ		8.30	63.8
1/4		8.20	63.9
C		8.20	63.9
S.P.L.		7.90	64.2

450' W. of Jewel

S.P.L.	72.14	9.00	63.1
C		8.80	63.3
1/4		9.00	63.1
ϕ		9.10	63.0
1/4		9.00	63.1
C		9.10	63.0
N.P.L.		9.30	62.8

500' W. of Jewel = E.P.L. of Broadway = 100'

N.P.L.		9.80	62.3
C		9.50	62.6
1/4		9.70	62.4
ϕ		9.50	62.6
1/4		9.80	62.3
C		9.80	62.3
S.P.L.		9.60	62.5

E.C.L. of Broadway

S.P.L.		10.2	61.9
C		10.1	62.0
1/4		9.7	62.4
ϕ		9.4	62.7
1/4		9.9	62.2
C		9.8	62.3
N.P.L.		9.7	62.4

E. 1/4 of Broadway

N.P.L.		9.8	62.8
C		9.6	62.5
1/4		9.7	62.4
ϕ		9.4	62.7
1/4		9.9	62.2
C		9.9	62.2
S.P.L.		10.0	62.1

E of Broadway

S.P.L.	72.14	10.3	61.8
C		10.1	62.0
1/4		10.0	62.1
∅		9.6	62.5
1/4		9.8	62.3
C		9.7	62.4
N.P.L.		9.7	62.4

W 1/4 of Broadway

N.P.L.		9.7	62.4
C		10.0	62.1
1/4		9.8	62.3
∅		9.8	62.3
1/4		10.1	62.0
C		10.0	62.1
S.P.L.		10.4	61.7

W.C.L. of Broadway

S.P.L.		10.4	61.7
C		10.0	62.1
1/4		9.8	62.3
∅		9.5	62.6
1/4		10.0	62.1
C		9.8	62.3
N.P.L.		9.7	62.4

W.P.L. of Broadway

N.P.L.		9.8	62.3
C		10.0	62.1
1/4		9.7	62.4
∅		9.6	62.5
1/4		10.0	62.1
C		10.2	61.9
S.P.L.		10.5	61.6

POSTED

50' W. of Broadway

S.P.L.	72.14	9.8	62.3
C		9.4	62.7
1/4		9.5	62.6
1/2		9.2	62.9
3/4		9.3	62.8
C		9.3	62.8
N.P.L.		9.2	62.9

100' W. of Broadway

N.P.L.		8.4	63.7
C		8.7	63.4
1/4		8.6	63.5
1/2		8.5	63.6
3/4		9.1	63.0
C		9.1	63.0
S.P.L.		9.2	62.9

150' W. of Broadway

S.P.L.	72.14	8.8	63.3
C		8.8	63.3
1/4		8.4	63.7
1/2		8.0	64.1
3/4		8.0	64.1
C		8.4	63.7
N.P.L.		7.6	64.5
TP		8.39	63.75

200' W. of Broadway

N.P.L.	7.64	71.39	5.6	65.8
C			6.4	65.0
1/4			6.0	65.4
1/2			6.3	65.1
3/4			6.8	64.6
C			7.2	64.2
S.P.L.			7.4	64.0

250' W of Broadway

S.P.L.	71.39	5.7	65.7
C		5.7	65.5
1/4		5.6	65.8
♀		5.2	66.2
1/4		5.2	66.2
C		5.4	66.0
N.P.L.		4.5	66.9

300' W. of Broadway

N.P.L.		4.7	67.0
C		5.0	66.4
1/4		4.7	66.7
♀		4.7	66.7
1/4		5.1	66.3
C		5.3	66.1
S.P.L.		5.8	66.1

350' W of Broadway

S.P.L.		5.1	66.3
C		5.1	66.3
1/4		5.0	66.4
♀		4.7	66.7
1/4		4.8	66.6
C		4.6	66.8
N.P.L.		3.9	67.5

400' W of Broadway

N.P.L.		4.60	66.8
C		4.50	66.9
1/4		4.80	66.6
♀		4.70	66.7
1/4		4.90	66.5
C		4.80	66.6
S.P.L.		5.10	66.3

450' W of Broadway

S.T.P.L.	71.39	4.90	66.5
C		4.50	66.9
1/4		4.70	66.7
2		4.40	67.0
1/4		4.40	67.0
C		4.10	67.3
N.T.P.L.		4.00	67.4

500' N. of Broadway = E.L. of Haines

N.T.P.L.		3.40	68.0
C		3.50	67.9
1/4		3.60	67.8
2		3.50	67.9
1/4		3.80	67.6
C		3.70	67.7
S.T.P.L.		4.10	67.3

E. 1/4 of Haines

46

S.T.P.L.		4.00	67.4
C		3.80	67.6
1/4		3.70	67.7
2		3.30	68.1
1/4		3.20	68.2
C		3.40	68.0
N.T.P.L.		3.20	68.2

E 1/4 of Haines

N.T.P.L.		2.90	68.5
C		3.40	68.0
1/4		3.20	68.2
2		3.20	68.2
1/4		3.40	68.0
C		3.80	67.6
S.T.P.L.		4.00	67.4

E of Haines

S.P.L.	71.39	3.80	67.6
C		3.30	68.1
1/4		3.40	68.0
♀		3.10	68.3
1/4		3.10	68.3
C		3.50	67.9
N.P.L.		2.70	68.7

N 1/4 of Haines

N.P.L.		2.90	68.5
C		3.20	68.2
1/4		3.00	68.4
♀		3.20	68.2
1/4		3.30	68.1
C		3.70	67.7
S.P.L.		4.00	67.4

W.C.L. of Haines

S.P.L.		3.30	68.1
C		3.30	68.1
1/4		3.20	68.2
♀		3.00	68.4
1/4		3.00	68.4
C		2.70	68.7
N.P.L.		2.60	68.8

W.P.L. of Haines

N.P.L.		2.50	68.9
C		2.60	68.8
1/4		2.70	68.7
♀		2.80	68.6
1/4		3.00	68.4
C		3.20	68.2
S.P.L.		3.50	67.9

50' W. of Haines

S.P.L.	71.39	3.30	68.1
C		3.20	68.2
1/4		2.90	68.5
Φ		2.90	68.5
1/4		3.20	68.2
C		3.70	67.7
N.T.L.		3.50	67.9

100' W. of Haines

N.T.L.	69.08	0.90	68.2
C		1.40	67.7
1/4		1.30	67.8
Φ		1.60	67.5
1/4		1.80	67.3
C		2.00	67.1
S.P.L.		2.40	66.7
T.T?	71.39	2.90	68.47

0.61 69.08

150' W. of Haines

S.P.L.	3.80	65.8
C	3.50	65.6
1/4	3.00	66.1
Φ	2.90	66.2
1/4	2.80	66.3
C	2.50	66.6
N.T.L.	2.20	66.9

200' W. of Haines

N.T.L.	3.80	65.8
C	4.30	64.8
1/4	4.20	64.9
Φ	4.40	64.7
1/4	4.70	64.4
C	5.00	64.1
S.P.L.	5.50	63.6

POSTED

250' W. of Haines

S.T.L.	69.08	7.40	61.7
C		6.90	62.2
1/4		6.60	62.5
2		6.30	62.8
1/4		6.20	62.9
C		6.10	63.0
N.T.L.		5.30	63.8

300' W. of Haines

N.T.L.		7.80	61.3
C		8.20	60.9
1/4		8.30	60.8
2		8.30	60.8
1/4		8.50	60.3
C		9.00	60.1
S.T.L.		9.50	59.6

350' W. of Haines

S.T.L.		11.60	57.5
C		11.10	58.0
1/4		10.50	58.6
2		10.60	59.5
1/4		10.70	58.4
C		10.40	58.7
N.T.L.		9.90	59.2

400' W. of Haines

N.T.L.		11.70	57.4
C		12.20	56.9
1/4		12.40	56.7
2		12.20	56.9
1/4		12.60	56.5
C		13.00	56.1
S.T.L.		13.40	55.7
T.P.		12.45	56.63

0.88 57.51

450' W of Haines

S.P.L.	57.51	3.30	54.2
C		2.80	54.7
1/4		2.40	55.1
2		2.10	55.4
1/4		2.10	55.4
C		2.00	55.5
N.P.L.		1.50	56.0

500' W. of Haines = E. of Gresham

N.P.L.		2.90	54.6
C		3.10	54.4
1/4		3.60	53.9
2		3.50	54.0
1/4		3.60	53.9
C		4.10	53.4
S.P.L.		4.40	53.1

E.C. L. of Gresham

50

S.P.L.		5.00	52.5
C		4.40	53.1
1/4		4.10	53.4
2		3.80	53.7
1/4		3.90	53.6
C		3.70	53.8
N.P.L.		3.60	53.9

E 1/4 of Gresham

N.P.L.		3.50	54.0
C		3.90	53.6
1/4		4.10	53.4
2		4.00	53.5
1/4		4.10	53.4
C		4.70	52.8
S.P.L.		5.00	52.5

PO-170

£ of Gresham

S.P.L.	57.51	51.10	52.4
C		4.70	52.8
1/4		4.30	53.2
ϕ		4.10	53.4
1/4		4.30	53.2
C		4.40	53.1
N.P.L.		3.60	53.9

W 1/4 of Gresham

N.P.L.		3.80	52.7
C		4.30	53.2
1/4		4.60	52.9
ϕ		4.40	53.1
1/4		4.50	53.0
C		5.00	52.5
S.P.L.		5.20	52.3

W.C.L. of Gresham

S.P.L.		5.50	52.0
C		5.20	52.3
1/4		4.80	52.7
ϕ		4.80	52.7
1/4		5.00	52.5
C		4.70	52.8
N.P.L.		4.40	53.1

W.P.L. of Gresham

N.P.L.		5.40	52.1
C		5.70	51.8
1/4		5.80	51.7
ϕ		5.60	51.9
1/4		5.90	51.6
C		6.00	51.5
S.P.L.		6.10	51.4

PC-75

50' W of Gresham

S.P.L.	57.51	7.30	50.2
0		6.70	50.8
1/4		6.60	50.9
1/2		6.60	50.9
3/4		6.70	50.8
C		6.50	51.0
N.P.L.		6.20	51.3

100' W of Gresham

N.P.L.		6.50	51.0
0		6.80	50.7
1/4		7.10	50.4
1/2		7.00	50.5
3/4		7.40	50.1
C		7.50	50.0
S.P.L.		7.70	49.8

150' W of Gresham

S.P.L.		8.10	49.4
0		7.90	49.6
1/4		7.80	49.7
1/2		7.30	50.2
3/4		7.30	50.2
C		7.00	50.5
N.P.L.		7.00	50.5

200' W of Gresham

N.P.L.		7.60	49.9
0		7.70	49.8
1/4		7.80	49.7
1/2		7.50	50.0
3/4		8.00	49.5
C		8.30	49.2
S.P.L.		8.40	49.1

P-117

250' W of Gresham

S.P.L.	57.51	8.70	48.8
C		8.60	47.9
1/4		8.30	49.2
ϕ		8.10	49.4
1/4		8.40	49.1
C		8.40	49.1
N.P.L.		8.30	49.2

300' W of Gresham

N.P.L.		9.10	48.4
C		9.20	48.3
1/4		8.90	48.6
ϕ		8.70	48.8
1/4		9.00	48.5
C		9.10	48.4
S.P.L.		9.40	48.1

350' W of Gresham

S.P.L.		9.90	47.6
C		9.80	47.7
1/4		9.70	47.8
ϕ		9.60	47.9
1/4		9.80	47.7
C		9.90	47.6
N.P.L.		9.80	47.7

400' W of Gresham

N.P.L.		9.80	47.7
C		10.10	47.4
1/4		10.00	47.5
ϕ		10.10	47.4
1/4		10.40	47.1
C		10.60	46.9
S.P.L.		10.70	46.8
T.P.		10.57	46.94

1.85 48.79

450' W of Gresham

S.P.L.	48.79	2.70	46.1
○		2.50	46.0
1/4		2.40	46.4
☽		1.80	47.0
1/4		1.80	47.0
○		1.80	47.0
N.P.L.		1.50	47.0

500' W. of Gresham = E.L. of Fanuel

N.P.L.		2.00	46.8
○		2.40	46.4
1/4		2.30	46.5
☽		2.30	46.5
1/4		2.60	46.2
○		2.70	46.1
S.P.L.		2.80	46.0

E.C.L. of Fanuel

S.P.L.		2.90	45.9
○		3.20	45.6
1/4		3.00	45.8
☽		2.60	46.2
1/4		2.50	46.0
○		2.50	46.0
N.P.L.		2.00	46.8

E 1/4 of Fanuel

N.P.L.		2.30	46.5
○		2.90	45.9
1/4		2.70	46.1
☽		2.80	46.0
1/4		3.00	45.8
○		3.20	45.6
S.P.L.		3.20	45.6

POSTED

ϕ of Fanuel

S.P.L.	48.79	3.80	45.0
C		3.80	45.0
1/4		3.40	45.4
ϕ		3.10	45.7
1/4		3.10	45.7
C		3.40	45.4
N.P.L.		2.90	45.9

W 1/4 of Fanuel

N.P.L.		2.70	46.1
C		3.10	45.7
1/4		3.30	45.5
ϕ		3.30	45.5
1/4		3.30	45.5
C		3.70	45.1
S.P.L.		3.70	45.1

W.C.L. of Fanuel

S.P.L.		3.90	44.9
C		3.80	45.0
1/4		3.40	45.4
ϕ		3.40	45.4
1/4		3.20	45.6
C		3.20	45.6
N.P.L.		2.90	45.9

W.T.L. of Fanuel

N.P.L.		3.10	45.7
C		3.20	45.6
1/4		3.40	45.4
ϕ		3.60	45.2
1/4		3.70	45.1
C		4.10	44.7
S.P.L.		4.20	44.6

POSTED

50' W of Fanuel

S.P.L.	4.879	4.90	43.9
C		4.60	44.2
1/4		4.60	44.2
ϕ		4.00	44.8
1/4		3.70	45.1
C		3.70	45.1
N.P.L.		3.50	45.8

100' W. of Fanuel

N.P.L.		4.10	44.7
C		4.20	44.6
1/4		4.10	44.7
ϕ		4.20	44.6
1/4		4.70	44.1
C		4.80	44.0
S.P.L.		5.20	43.6

150' W of Fanuel

S.P.L.		5.40	43.4
C		4.90	43.9
1/4		4.90	43.9
ϕ		4.50	44.3
1/4		4.70	44.1
C		4.60	44.2
N.P.L.		4.10	44.7

200' W. of Fanuel

N.P.L.		4.40	44.4
C		4.50	44.3
1/4		4.70	44.1
ϕ		4.80	44.0
1/4		5.10	43.7
C		5.20	43.6
S.P.L.		5.70	43.1

250' W. of Fanuel

S.P.L.	48.79	5.90	42.9
C		5.50	43.3
1/4		5.30	43.5
ϕ		5.00	43.8
1/4		4.90	43.9
C		4.90	43.9
N.P.L.		4.60	44.0

300' W. of Fanuel

N.P.L.		5.40	43.4
C		5.80	43.0
1/4		5.90	42.9
ϕ		5.80	43.0
1/4		6.00	42.8
C		6.10	42.7
S.P.L.		6.30	42.5

350' W. of Fanuel

S.P.L.		7.30	41.5
C		6.90	41.9
1/4		6.80	42.0
ϕ		6.50	42.3
1/4		6.50	42.3
C		6.60	42.2
N.P.L.		5.90	42.9

400' W. of Fanuel

N.P.L.		6.50	42.3
C		6.90	41.9
1/4		7.00	41.8
ϕ		7.10	41.7
1/4		7.40	41.4
C		7.70	41.1
S.P.L.		8.00	40.8
T.P.		7.70	41.09

450' W. of Fanuel [41.09]

S.P.L.	0.9R	42.01	1.60	40.2
C			1.40	40.6
1/4			1.30	40.7
ϕ			0.70	41.3
1/4			0.80	41.2
C			0.70	41.3
N.P.L.			0.30	41.7

500' W. of Fanuel = E.L. of Ererts

N.P.L.			1.00	41.0
C			1.40	40.6
1/4			1.80	40.2
ϕ			1.60	40.4
1/4			2.00	40.0
C			2.40	39.6
S.P.L.			2.60	39.4

E.C.L. of Ererts

S.P.L.			2.90	39.1
C			2.60	39.4
1/4			2.20	39.8
ϕ			1.80	40.2
1/4			2.10	39.9
C			1.50	40.5
N.P.L.			1.30	40.7

E 1/4 of Ererts

N.P.L.			1.30	40.7
C			1.60	40.4
1/4			2.00	40.0
ϕ			1.80	40.2
1/4			2.30	39.7
C			2.70	39.3
S.P.L.			3.10	38.9

POSTED

Q. of Events

S.P.L.	42.01	3.20	38.8
C		3.00	39.0
1/4		2.60	39.4
Q		1.80	40.2
1/4		2.10	39.9
C		1.90	40.1
N.P.L.		1.40	40.6

Dr. 1/4 of Events

N.P.L.	1.50	40.5
C	1.90	40.1
1/4	2.20	39.8
Q	2.00	40.0
1/4	2.60	39.4
C	2.80	39.2
S.P.L.	3.30	38.7

W.C.L. of Events

S.P.L.	3.40	38.6
C	3.00	39.0
1/4	2.80	39.2
Q	2.20	39.8
1/4	2.40	39.6
C	1.90	40.1
N.P.L.	1.60	40.4

W.P.L. of Events

N.P.L.	2.20	39.8
C	2.60	39.4
1/4	2.90	39.1
Q	2.70	39.3
1/4	3.20	38.8
ST	3.70	38.3
S.P.L.	4.20	37.8

POSTED

50' W of Everts

S.P.L.	4.20	4.80	37.2
C		4.60	37.4
1/4		4.20	37.8
ϕ		3.60	38.4
1/4		3.80	38.2
C		3.50	38.5
N.P.L.		3.20	38.8

100' W. of Everts

N.P.L.		3.90	38.1
C		4.30	37.7
1/4		4.50	37.5
ϕ		4.30	37.7
1/4		4.70	37.3
C		5.10	36.9
S.P.L.		5.30	36.7

150' W of Everts

S.P.L.		5.80	36.2
C		5.40	36.6
1/4		5.20	36.8
ϕ		4.80	37.2
1/4		4.80	37.2
C		4.60	37.4
N.P.L.		4.20	37.8

200' W. of Everts

N.P.L.		4.60	37.4
C		5.10	36.9
1/4		5.40	36.6
ϕ		5.20	36.8
1/4		5.50	36.5
C		6.10	35.9
S.P.L.		6.30	35.7

250' W. of Everett

S.P.L.	42.01	6.70	35.3
C		6.40	35.6
1/4		6.20	35.8
ϕ		5.60	36.4
1/4		5.60	36.4
C		5.70	36.3
N.P.L.		5.20	36.8

300' W. of Everett

N.P.L.		5.80	36.2
C		6.00	36.0
1/4		6.30	35.7
ϕ		6.20	35.8
1/4		6.70	35.3
C		6.90	35.1
S.P.L.		6.90	35.1

350' W. of Everett

61

S.P.L.		7.80	34.2
C		7.40	34.6
1/4		7.30	34.7
ϕ		6.70	35.3
1/4		7.00	35.0
C		6.90	35.1
N.P.L.		6.50	35.5

400' W. of Everett

N.P.L.		7.00	35.0
C		7.70	34.3
1/4		7.70	34.3
ϕ		7.50	34.5
1/4		8.00	34.0
C		8.30	33.7
S.P.L.		8.50	33.5

POSTED

450' W. of Everett's

S.P.L.	42.01	9.20	32.8
C		9.00	33.0
1/4		8.80	33.2
ϕ		8.20	33.8
1/4		8.30	33.7
C		8.30	33.7
N.P.L.		7.70	34.3

500' W. of Everett's = E.L. of Dawes

N.P.L.		8.10	33.9
C		8.60	33.4
1/4		8.60	33.4
ϕ		8.60	33.4
1/4		9.10	32.9
C		9.70	32.3
S.P.L.		10.00	32.0
T.B.		8.12	33.89

1.22 35.11

E.C.L. of Dawes

S.T.P.L.	35.11	3.50	31.6
C		3.20	31.9
1/4		2.60	32.5
ϕ		2.10	33.0
1/4		1.90	33.2
C		1.70	33.4
N.P.L.		1.60	33.5

E 1/4 of Dawes

N.P.L.		1.30	33.8
C		2.30	32.8
1/4		2.30	32.8
ϕ		1.80	33.3
1/4		2.30	32.8
C		3.00	32.1
S.P.L.		3.30	31.8

Top. of
Hydrant Post
S.E. Corner
of Everett's

E. Dawes

S.P.L.	35.11	3.20	31.9
C		2.90	32.2
1/4		2.40	32.7
∅		1.90	33.2
1/4		2.50	32.6
C		2.30	32.8
N.P.L.		1.10	34.0

W 1/4 Dawes

N.P.L.		1.20	33.9
C		2.30	32.8
1/4		2.70	32.4
∅		2.20	32.9
1/4		2.60	32.5
C		3.00	32.1
S.P.L.		3.40	31.7

W.C.L. Dawes

S.P.L.		3.70	31.4
C		3.50	31.6
1/4		2.80	32.3
∅		2.40	32.7
1/4		2.80	32.8
C		2.50	32.6
N.P.L.		1.90	33.2

W.P.L. Dawes

N.P.L.		1.90	33.2
C		2.90	32.2
1/4		2.70	32.4
∅		2.50	32.6
1/4		3.00	32.1
C		3.40	31.7
S.P.L.		3.90	31.2

POSTED

50' W of Dunes

S.P.L.	3.5.11	4.50	30.6
C		3.90	31.2
1/4		3.60	31.5
ϕ		3.20	31.9
1/4		3.40	31.7
0		3.50	31.6
N.P.L.		2.80	32.3

100' W of Dunes

N.P.L.		3.50	31.6
C		4.10	31.0
1/4		4.00	31.1
ϕ		4.00	31.1
1/4		4.40	30.7
C		4.80	30.3
S.P.L.		5.10	30.0

150' W of Dunes

S.P.L.		5.40	29.7
C		5.10	30.0
1/4		4.90	30.2
ϕ		4.40	30.7
1/4		4.40	30.7
C		4.40	30.7
N.P.L.		3.90	31.2

200' W of Dunes

N.P.L.		4.10	31.0
C		4.50	30.6
1/4		4.60	30.5
ϕ		4.50	30.6
1/4		4.80	30.3
C		5.20	29.9
S.P.L.		5.70	29.4

250' W of Dawes

S.P.L.	35.11	5.90	29.2
C		5.60	29.5
1/4		5.50	29.6
Φ		4.80	30.3
1/4		4.80	30.3
C		4.90	30.2
N.P.L.		4.40	30.7

300' W of Dawes

N.P.L.		4.70	30.4
C		5.00	30.1
1/4		6.20	29.9
Φ		5.20	29.9
1/4		5.80	29.3
C		6.10	29.0
S.P.L.		6.30	28.8

250' W of Dawes

S.P.L.		6.60	28.5
C		6.10	29.0
1/4		6.00	29.1
Φ		5.60	29.5
1/4		5.40	29.7
C		5.60	29.5
N.P.L.		5.00	30.1

400' W of Dawes

N.P.L.		6.60	29.5
C		6.00	29.1
1/4		6.80	29.3
Φ		5.70	29.4
1/4		6.20	28.9
C		6.30	28.8
S.P.L.		6.80	28.3

POSTED

450' W of Dawes

S.P.L.	35.11	7.10	28.0
C		6.90	28.2
1/4		6.90	28.2
2		6.40	28.7
1/4		6.40	28.7
C		6.60	28.5
N.P.L.		6.30	28.8

500' W of Dawes = F.L. Cass

N.P.L.		6.70	28.4
C		7.50	27.6
1/4		7.10	28.0
2		7.20	27.9
1/4		7.40	27.7
C		7.30	27.8
S.P.L.		7.60	27.5
T.P.		7.60	27.57

2.68 30.19

F.C.L. Cass

66

S.P.L.	30.19	2.90	27.3
C		2.90	27.3
1/4		3.10	27.1
2		2.70	27.5
1/4		2.40	27.8
C		2.90	27.3
N.P.L.		2.50	27.7

E 1/4 of Cass

N.P.L.		2.40	27.8
C		2.80	27.4
1/4		2.50	27.7
2		2.70	27.5
1/4		3.00	27.2
C		2.90	27.3
S.P.L.		3.10	27.1

Φ of Cass

S.P.L.	30.19	2.80	27.4
C		2.70	27.5
1/4		2.60	27.6
Φ		2.50	27.7
1/4		2.70	27.5
C		2.70	27.5
N.P.L.		2.40	27.8

W 1/4 of Cass

N.P.L.		2.60	27.6
C		2.80	27.4
1/4		3.00	27.2
Φ		2.70	27.5
1/4		3.10	27.1
C		3.40	26.8
S.P.L.		3.40	26.8

W.C.L. of Cass

67

S.P.L.		3.90	26.8
C		3.40	26.8
1/4		3.50	26.7
Φ		3.20	27.0
1/4		3.30	26.9
C		3.70	26.5
N.P.L.		3.00	27.2

W.P.L. of Cass

N.P.L.		3.00	27.2
C		3.50	26.7
1/4		3.50	26.7
Φ		2.30	26.9
1/4		3.70	26.5
C		3.80	26.4
S.P.L.		3.80	26.4

POSTED

50' W. of Cass

S.P.L.	30.19	4.60	25.6
C		4.50	25.7
1/4		4.30	25.9
ϕ		4.00	26.2
1/4		3.80	26.4
C		4.20	26.0
N.P.L.		3.80	26.4

100' W. of Cass

N.P.L.		4.20	26.0
C		4.50	25.7
1/4		4.50	25.7
ϕ		4.50	25.7
1/4		4.60	25.6
C		4.80	25.4
S.P.L.		5.10	25.1

150' W. of Cass

S.P.L.		5.50	24.7
C		5.40	24.8
1/4		5.00	25.2
ϕ		4.70	25.5
1/4		4.60	25.6
C		4.90	25.3
N.P.L.		4.40	25.8

200' W. of Cass

N.P.L.		4.70	25.5
C		5.10	25.1
1/4		5.10	25.1
ϕ		5.30	24.9
1/4		5.80	24.4
C		5.70	24.5
S.P.L.		6.00	24.2

250' W. of Cass

S.P.L.	30.19	6.50	23.7
C		6.40	23.8
1/4		5.90	24.3
1/2		5.50	24.7
1/4		5.10	25.1
C		5.40	24.8
N.P.L.		5.40	24.8

300' W. of Cass

N.P.L.		5.90	24.3
C		6.40	23.8
1/4		6.10	24.1
1/2		6.30	23.9
1/4		6.40	23.8
C		7.00	23.2
S.P.L.		7.10	23.1

350' W. of Cass

S.P.L.		7.60	22.6
C		7.10	23.1
1/4		7.00	23.2
1/2		6.80	23.4
1/4		6.60	23.6
C		6.80	23.4
N.P.L.		6.30	23.9

400' W. of Cass

N.P.L.		7.00	23.2
C		7.30	22.9
1/4		7.20	23.0
1/2		7.30	22.9
1/4		7.70	22.5
C		7.90	22.3
S.P.L.		8.10	22.1

POSTED

450' W. of Cass

S.P.L.	30.19	8.60	21.6
C		8.50	21.7
1/4		8.20	22.0
♀		7.60	22.6
1/4		7.80	22.4
C		7.80	22.4
N.P.L.		7.70	22.5

500' W. of Cass = E.P.L. Bayard

N.P.L.		8.00	22.2
C		8.10	22.1
1/4		8.40	21.8
♀		8.40	21.8
1/4		8.50	21.7
C		8.30	21.9
S.P.L.		9.20	21.0
T.T.		9.25	20.94
B.M.	5.05	25.49	4.55 20.94

Hub. N.W. Bayard

E.C.L. Bayard 20.94

S.P.L.	22.00	22.94	2.30	20.6
C			2.70	20.2
1/4			2.00	20.9
♀			1.50	21.4
1/4			1.50	21.4
C			1.40	21.5
N.P.L.			1.30	21.6

E 1/4 of Bayard

N.P.L.		1.20	21.7
C		1.50	21.4
1/4		1.50	21.4
♀		2.00	20.9
1/4		2.00	20.9
C		2.50	20.4
S.T.L.		3.00	19.9

POST

E of Bayard

S.P.L.	22.94	2.30	20.6
C		2.10	20.8
1/4		1.90	21.0
Φ		1.80	21.1
1/4		1.70	21.2
C		1.60	21.3
N.P.L.		1.30	21.6

W. 1/4 of Bayard

N.P.L.		1.80	21.1
C		1.90	21.0
1/4		2.10	20.8
Φ		1.90	21.0
1/4		2.30	20.6
C		2.70	20.2
S.P.L.		3.00	19.9

W.C.L. of Bayard

S.P.L.		2.90	20.0
C		2.70	20.2
1/4		2.40	20.5
Φ		1.70	21.2
1/4		2.30	20.6
C		2.60	20.8
N.P.L.		1.80	21.1

W.P.L. of Bayard

N.P.L.		2.00	20.9
C		2.60	20.3
1/4		2.40	20.5
Φ		2.10	20.8
1/4		2.60	20.3
C		3.00	19.1
S.P.L.		3.10	19.8

50' W. of Bayard

S.P.L.	22.94	3.50	19.4
C		3.40	19.5
1/4		3.20	19.7
♀		2.60	20.3
1/4		3.00	19.9
C		3.00	19.9
N.T.L.		2.60	20.3

100' W. of Bayard

N.T.L.		3.20	19.7
C		4.00	18.9
1/4		3.60	19.3
♀		3.20	19.7
1/4		3.70	19.2
C		4.10	18.8
S.T.L.		4.10	18.8

150' W. of Bayard

S.P.L.		4.80	18.1
C		4.80	18.1
1/4		4.50	18.4
♀		4.00	18.9
1/4		4.40	18.5
C		5.10	17.8
N.T.L.		3.70	19.2

200' W. of Bayard

N.T.L.		4.60	18.3
C		5.50	17.4
1/4		5.20	17.7
♀		4.70	18.2
1/4		5.00	17.9
C		5.40	17.5
S.T.L.		5.40	17.5

POSTED

250' W. of Bayard

S.P.L.	22.94	6.40	16.5
C		6.50	16.4
1/4		5.90	17.0
♀		5.60	17.3
1/4		6.10	16.8
C		6.80	16.1
N.T.L.		5.80	17.1

300' W. of Bayard

N.T.L.		7.40	15.5
C		6.20	14.7
1/4		7.50	15.4
♀		7.00	15.9
1/4		7.30	15.6
C		8.00	14.9
S.P.L.		7.80	15.1

300' W. of Bayard

S.P.L.		10.90	12.0
C		10.50	12.4
1/4		10.20	12.7
♀		10.20	12.7
1/4		9.80	13.1
C		9.10	13.8
N.T.L.		8.10	14.8

^{375'}
400' W. of Bayard

N.T.L.		8.90	14.0
C		9.30	13.6
1/4		10.00	12.9
♀		9.90	13.0
1/4		10.50	12.4
C		11.00	11.9
S.P.L.		10.90	12.0

400' W. of Bayard

S.P.L.	22.94	10.60	12.03
C		10.70	12.2
1/4		10.40	12.5
2		10.20	12.7
1/6		10.30	12.7
C		10.50	12.4
N.T.L.		10.60	12.3

450' W. of Bayard = E.P.L. of Allison

N.T.L.		9.80	13.1
C		10.00	12.9
1/4		9.70	13.2
2		9.80	13.1
1/4		9.70	13.2
S.P.L.		10.00	12.9
S.P.L.		9.60	13.3

500' W. of Bayard = E.P.L. of Allison

S.P.L.		9.20	13.7
C		9.10	13.8
1/4		8.70	14.2
2		8.40	14.5
1/4		8.70	14.2
C		8.70	14.2
N.T.L.		8.50	14.4

E.C.L. of Allison

N.T.L.		8.5	14.4
C		8.9	14.0
1/4		7.2	13.7
2		7.3	13.6
1/4		9.0	13.9
C		9.0	13.9
S.P.L.		9.3	13.6

POSTED

E 1/4 of Allison

S.P.L.	2.294	10.2	12.9
C		9.7	13.12
1/4		9.0	13.6
♀		9.5	13.1
1/4		9.1	13.8
C		8.7	14.2
N.P.L.		8.7	14.2
T.P.		10.12	12.82

38' W. of E.P.L. of Allison = E.P. of Track

N.P.L.	3.19	16.01	0.34	15.5
C		1.01		15.0
1/4		1.10		14.9
♀		1.20		14.8
1/4		1.32		14.7
C		1.41		14.6
S.P.L.		1.62		14.4

W. 1/4 of Allison

S.P.L.		2.7	13.6
C		2.3	13.7
1/4		2.2	13.8
♀		2.3	13.7
1/4		2.1	13.9
C		1.8	14.2
N.P.L.		1.8	14.2

W.C.L. of Allison

N.P.L.		1.4	14.6
C		1.5	14.5
1/4		1.6	14.4
♀		1.5	14.5
1/4		1.8	14.2
C		1.9	14.1
S.P.L.		2.2	13.8

POSTED

W.T.L. of Allison

S.P.L.	16.01	21.4	13.6
C		2.1	13.9
$\frac{1}{4}$		1.7	14.3
$\frac{1}{2}$		1.3	14.7
$\frac{3}{4}$		1.6	14.4
C		1.4	14.6
X.P.L.		1.0	15.0

P. 76

78



1 2 3 4 5 6 7 8 9 10 11 12 13 14 15 16

12.60
4290

12.00 24
120 50

1234567891011121314151617
910111213141516

DISTANCES FROM CENTER OF ROADWAY FOR CROSS-SECTIONING.

FOR SINGLE TRACK EMBANKMENT.

ROADWAY 14 FEET WIDE. SIDE SLOPES 1½ TO 1.

40 40 2 20 40 40

	0	.1	.2	.3	.4	.5	.6	.7	.8	.9	
0	7.0	7.2	7.3	7.5	7.6	7.8	7.9	8.1	8.2	8.4	0
1	8.5	8.7	8.8	9.0	9.1	9.3	9.4	9.6	9.7	9.9	1
2	10.0	10.2	10.3	10.5	10.6	10.8	10.9	11.1	11.2	11.4	2
3	11.5	11.7	11.8	12.0	12.1	12.3	12.4	12.6	12.7	12.9	3
4	13.0	13.2	13.3	13.5	13.6	13.8	13.9	14.1	14.2	14.4	4
5	14.5	14.7	14.8	15.0	15.1	15.3	15.4	15.6	15.7	15.9	5
6	16.0	16.2	16.3	16.5	16.6	16.8	16.9	17.1	17.2	17.4	6
7	17.5	17.7	17.8	18.0	18.1	18.3	18.4	18.6	18.7	18.9	7
8	19.0	19.2	19.3	19.5	19.6	19.8	19.9	20.1	20.2	20.4	8
9	20.5	20.7	20.8	21.0	21.1	21.3	21.4	21.6	21.7	21.9	9
10	22.0	22.2	22.3	22.5	22.6	22.8	22.9	23.1	23.2	23.4	10
11	23.5	23.7	23.8	24.0	24.1	24.3	24.4	24.6	24.7	24.9	11
12	25.0	25.2	25.3	25.5	25.6	25.8	25.9	26.1	26.2	26.4	12
13	26.5	26.7	26.8	27.0	27.1	27.3	27.4	27.6	27.7	27.9	13
14	28.0	28.2	28.3	28.5	28.6	28.8	28.9	29.1	29.2	29.4	14
15	29.5	29.7	29.8	30.0	30.1	30.3	30.4	30.6	30.7	30.9	15
16	31.0	31.2	31.3	31.5	31.6	31.8	31.9	32.1	32.2	32.4	16
17	32.5	32.7	32.8	33.0	33.1	33.3	33.4	33.6	33.7	33.9	17
18	34.0	34.2	34.3	34.5	34.6	34.8	34.9	35.1	35.2	35.4	18
19	35.5	35.7	35.8	36.0	36.1	36.3	36.4	36.6	36.7	36.9	19
20	37.0	37.2	37.3	37.5	37.6	37.8	37.9	38.1	38.2	38.4	20
21	38.5	38.7	38.8	39.0	39.1	39.3	39.4	39.6	39.7	39.9	21
22	40.0	40.2	40.3	40.5	40.6	40.8	40.9	41.1	41.2	41.4	22
23	41.5	41.7	41.8	42.0	42.1	42.3	42.4	42.6	42.7	42.9	23
24	43.0	43.2	43.3	43.5	43.6	43.8	43.9	44.1	44.2	44.4	24
25	44.5	44.7	44.8	45.0	45.1	45.3	45.4	45.6	45.7	45.9	25
26	46.0	46.2	46.3	46.5	46.6	46.8	46.9	47.1	47.2	47.4	26
27	47.5	47.7	47.8	48.0	48.1	48.3	48.4	48.6	48.7	48.9	27
28	49.0	49.2	49.3	49.5	49.6	49.8	49.9	50.1	50.2	50.4	28
29	50.5	50.7	50.8	51.0	51.1	51.3	51.4	51.6	51.7	51.9	29
30	52.0	52.2	52.3	52.5	52.6	52.8	52.9	53.1	53.2	53.4	30
31	53.5	53.7	53.8	54.0	54.1	54.3	54.4	54.6	54.7	54.9	31
32	55.0	55.2	55.3	55.5	55.6	55.8	55.9	56.1	56.2	56.4	32
33	56.5	56.7	56.8	57.0	57.1	57.3	57.4	57.6	57.7	57.9	33
34	58.0	58.2	58.3	58.5	58.6	58.8	58.9	59.1	59.2	59.4	34
35	59.5	59.7	59.8	60.0	60.1	60.3	60.4	60.6	60.7	60.9	35
36	61.0	61.2	61.3	61.5	61.6	61.8	61.9	62.1	62.2	62.4	36

Calculated by Julien A. Hall, M. Am. Soc. C. E.