

400
LEVEL

F.B. 425

Published by H. S. CROCKER COMPANY, Stationers, Drawing Materials, and Mathematical Instruments, San Francisco.

Table showing the difference of latitude and departure in running 80 chains at any course from 1 to 60 minutes.

MINUTES.	LKS.	MINUTE	S.	MINUTES.	LKS.
1	2 $\frac{1}{2}$	21	49	41	95 $\frac{1}{2}$
2	4 $\frac{1}{2}$	22	51 $\frac{1}{2}$	42	98
3	7	23	53 $\frac{1}{2}$	43	100 $\frac{1}{2}$
4	9 $\frac{1}{2}$	24	56	44	102 $\frac{1}{2}$
5	11 $\frac{1}{2}$	25	58 $\frac{1}{2}$	45	105
6	14	26	60 $\frac{1}{2}$	46	107 $\frac{1}{2}$
7	16 $\frac{1}{2}$	27	63	47	109 $\frac{1}{2}$
8	18 $\frac{1}{2}$	28	65 $\frac{1}{2}$	48	112
9	21	29	67 $\frac{1}{2}$	49	114 $\frac{1}{2}$
10	23 $\frac{1}{2}$	30	70	50	116 $\frac{1}{2}$
11	25 $\frac{1}{2}$	31	72 $\frac{1}{2}$	51	119
12	28	32	74 $\frac{1}{2}$	52	121 $\frac{1}{2}$
13	30 $\frac{1}{2}$	33	77	53	123 $\frac{1}{2}$
14	32 $\frac{1}{2}$	34	79 $\frac{1}{2}$	54	126
15	35	35	81 $\frac{1}{2}$	55	128 $\frac{1}{2}$
16	37 $\frac{1}{2}$	36	84	56	130 $\frac{1}{2}$
17	39 $\frac{1}{2}$	37	86 $\frac{1}{2}$	57	133
18	42	38	88 $\frac{1}{2}$	58	135 $\frac{1}{2}$
19	44 $\frac{1}{2}$	39	91	59	137 $\frac{1}{2}$
20	46 $\frac{1}{2}$	40	93 $\frac{1}{2}$	60	140

TABLE FOR RUNNING ON SLOPES.

In the following table the first column shows the angle, the second the number of links to be added to a chain on the slopes, to make one chain, horizontal measurement.

ANGLE	COR. IN LINKS	ANGLE	COR. IN LINKS	ANGLE	COR. IN LINKS	ANGLE	COR. IN LINKS
0		0		0		0	
4	0.24	11	1.88	18	5.14	25	10.54
5	0.38	12	2.24	19	5.76	26	11.26
6	0.55	13	2.63	20	6.42	27	12.24
7	0.76	14	3.06	21	7.11	28	13.37
8	0.98	15	3.53	22	7.85	29	14.34
9	1.24	16	4.02	23	8.64	30	15.47
10	1.55	17	4.56	24	9.47	35	22.07

Blount
Ballou
Ward

Inspector of Macaulay St (60')

Continued from Book #24

1

163.05-

50' w of Angle

52		11.3	151.8
41		11.5	151.6
"		11.8	151.3
6		12.0	151.1
"		12.2	150.8
41		12.9	150.2
22		13.3	149.8
TP	229	153.40	11.84 151.11

100' W

22		7.7	145.7
41		7.3	146.1
"		6.9	146.5
6		6.4	147.0
"		6.0	147.4
41		5.7	147.7
52		5.8	147.6

POSITIVE

15340

127' w

sr	79	145.5
ll	90	144.4
7	86	144.8
6	88	144.6
7	93	144.1
ll	100	143.4
nr	100	143.4

127' w
165' w S J. Edin R.R. Right way

nr	100	143.4
ll	102	143.2
7	101	143.3
6	100	143.4
7	100	143.4
ll	90	144.4
sr	74	145.0

15340

Mascaly w

2

+ 14' w of RR Right way (70' to Bank)

sr	13	152.1
ll	16	151.8
7	18	151.6
6	19	151.5
7	21	151.3
ll	20	151.4
nr	24	151.0

30' w = w R.R. Bank

nr	24	151.0
ll	21	151.3
7	22	151.2
6	22	151.2
7	18	151.6
ll	15	151.9
sr	13	152.1

POST

15540

43' N = W. line of Pt of way

S2	91	1443
ll	95	1439
y	11,0	1424
h	120	1414
y	120	1414
ll	120	1404
n2	130	1404

TP 104 14196 1248 14092
 31' W of Pt of way on n2 = 127' E of bitah on S
 09 N of way

n2	50	1370
ll	45	1375
y	43	1377
h	27	1381
y	29	1391
ll	06	1414
S2		1443

14196

Macaulay st

3

100' E of bitah on S

S2	58	1362
h	66	1354
y	67	1353
h	70	1350
y	67	1353
ll	66	1354
n2	65	1355

(450) 50' E of bitah on S
 40' E of bitah on n2

n2	86	1334
ll	85	1335
y	85	1335
h	84	1336
y	82	1338
ll	80	1340
S2	77	1343

14196

Esin of Catalina Blva

52	77	1343
u	81	133,9
"	84	133,6
6	87	133,3
"	88	133,2
u	90	133,0
m2	913	13282

cross-section of Allyphant St (60')
 From West line of Anacapa St to
 Pueblo line E line of Anna Heights

211.75

Allyphant

5

	293	<u>211.75</u>	208.82
	Width of Anacapa St (60')		
SL		84	203.4
M		88	203.0
"		93	202.5
b		98	202.0
"		103	201.5
ll		110	200.8
nl		117	200.1
	width of Anacapa		
nl		127	199.6
M		116	200.2
"		108	201.0
b		100	201.8
"		96	202.2
ll		90	202.8
SL		84	203.4

width of Anacapa St

SL	86	203.2
ll	90	202.8
"	100	201.8
"	105	201.3
"	110	200.8
ll	117	200.1
nl	126	199.2

center of Anacapa

nl	130	198.8
ll	120	199.8
"	112	200.5
"	103	201.5
"	97	202.1
ll	91	202.7
SL	84	203.4

POSTED

211.75

E 1/2 of Anakkota

SL	88	2030
ll	95	2023
"	101	2017
l	107	2011
"	113	2005
ll	121	1997
nl	133	1985

E ll of Anakkota

nl	135	1983
ll	127	1991
"	120	1988
l	111	2007
"	104	2014
ll	95	2023
SL	89	2029
TP	150	20406
	919	20260 ^{VSEM} 20252 ^{Anakkota}

20406

Anakkota

6

E line of Anakkota

SL	150	2026
ll	20	2021
"	26	2015
l	33	2008
"	40	1999
ll	54	1987
nl	62	1979

50. E of Anakkota

nl	95	1946
ll	84	1957
"	73	1968
l	66	1975
"	57	1984
ll	48	1993
SL	40	2001

20406

19361

Colly plant

7

	100	E of	Amakota
SL			71 1970
ll			82 1959
l			92 1949
ll			104 1937
l			116 1925
ll			126 1915
nl			137 1904

	200	E of	Amakota
SL			44 189.2
ll			55 188.1
l			67 186.7
ll			82 185.4
l			90 184.6
ll			103 183.3
nl			119 181.7

TP 250 19361 1295 1911

250 E of Amakota

	150	E of	Amakota
nl			82 185.4
ll			61 187.5
l			47 188.9
ll			34 190.2
l			26 191.0
ll			14 192.2
SL			04 193.2

	250	E of	Amakota
nl			152 178.0
ll			141 179.5
l			135 180.1
ll			124 181.2
l			109 182.5
ll			101 183.5
SL			90 184.6
TP	050	18128	1283 180.78

POSTED

18128

275' E of Anukapa

SL	0.80	180.5
HL	2.0	179.3
Y	2.7	178.6
b	3.9	177.4
+	5.5	175.8
hl	6.8	174.5
hl	8.7	172.6

300' E of Anukapa

SL	1.39	167.4
HL	1.25	168.8
Y	11.4	169.9
b	10.3	171.0
Y	8.9	172.4
HL	8.1	173.2
SL	6.7	174.6
TP	0.45	169.01
	12.72	168.52

16901

Collyhurst II

8

360' 360' E = W line of Warrington (60')

SL	5.4	163.6
HL	6.7	162.3
Y	7.7	161.8
b	8.7	160.3
Y	9.7	159.8
HL	10.8	158.2
HL	11.4	157.6

W. line of Warrington

SL	12.4	156.6
HL	11.5	157.7
Y	10.6	158.4
SL	9.9	159.1
Y	8.7	160.3
HL	8.0	161.0
SL	6.7	162.3

16901

W'ly of	Warrington		
52	87	160.3	
4	97	159.3	
"	102	158.7	
6	113	157.7	
"	121	156.9	
4	133	155.7	
42	139	155.1	

Centre of Warrington

22	146	154.4	
4	138	155.2	
4	125	156.5	
6	118	157.2	
7	109	158.1	
4	101	158.9	
52	95	159.5	

Bm 524

TP 340 16098 1143 15758 Warrington

16088

Obysphant v

9

E'ly of	Warrington		
52	24	158.6	
4	36	157.4	
4	37	157.3	
6	46	156.4	
4	53	155.5	
4	68	154.2	
22	75	154.5	

S'ly of Warrington

22	86	153.4	
4	75	153.5	
4	66	154.4	
6	57	155.3	
7	49	156.1	
4	40	157.0	
52	21	157.9	

160.98

E line of Warrington

52	161.0	240	157.6
44		49	156.1
7		55	155.5
6		60	155.0
7		71	153.9
44		78	153.2
22		91	151.0

50 E of Warrington

22		127	148.3
44		117	149.3
7		105	150.5
6		98	151.2
7		90	152.0
44		81	152.9
52		73	153.7

TP 065 14882 1281 14897

14882

Allyphant st

10

100' E of Warrington

52	148.8	21	146.7
44		31	145.7
7		36	145.2
6		45	144.9
7		46	144.2
44		56	143.2
22		67	142.4

125'

22		88	139.0
44		97	139.1
44		84	140.4
6		80	140.8
7		74	141.4
44		66	142.2
52		60	142.8

POSTED

14882

150' E of Warrington

SL	148.8	87	140.6
ll		88	140.0
7		92	139.6
l		103	138.5
7		118	137.0
ll		127	136.1
nl		132	135.6

TP 027 13632 1297 12585

200' E of Warrington

SL		13	135.0
ll		20	134.3
7		28	133.5
l		36	132.7
7		43	132.0
ll		61	130.2
nl		58	130.5

13632

Chyphunt

11

250' E of Warrington

nl		120	124.3
ll		115	124.8
7		108	125.5
l		95	126.8
7		89	127.4
ll		80	128.3
SL		79	128.4

TP 012 12590 1254 12378

300' E of Warrington

SL		04	123.5
ll		13	122.6
7		11	122.6
l		16	122.3
7		25	121.4
ll		35	120.7
nl		50	118.9

POSTED

12390

350' E of Warrington

22	123.9	98	114.1
22		93	114.6
7		88	115.1
6		78	116.1
7		71	116.6
22		61	117.8
52		59	118.0

400' E of Warrington

52		105	113.4
22		110	112.9
7		106	113.3
6		113	112.6
7		117	112.2
22		125	111.4
22		128	111.1
7P	090	1125	1229 151.61

11251

Olyphant

12

450' E of Warrington

22	112.5	37	108.8
22		34	109.1
7		35	109.0
6		34	109.1
7		33	109.2
22		29	109.6
52		24	110.1

500' E of Warrington

52		57	106.5
22		62	106.3
7		64	106.1
6		67	105.6
7		68	105.7
22		71	105.4
22		72	105.3

POSTED

11251

550 E of Warrigah

SL	112.5	101	102.4
h		96	102.9
h		94	103.1
b		96	102.9
h		94	103.1
h		98	102.7
SL		89	103.6

600 E of Warrigah

SL		114	101.1
		118	100.7
		127	99.8
		132	99.3
		142	98.3
		140	98.5
		145	98.0

TP 610 10673 1188 100.63 ^{BM 500} _{blot mark}

10673

Blot mark

13

647 E = W side of blot mark (70')

SL	106.7	610	100.6
h		68	99.9
h		73	99.4
b		80	98.7
h		88	98.1
h		89	97.8
SL		95	97.2

N side of blot mark

SL		90	97.7
h		86	98.1
h		80	98.7
b		75	99.2
h		78	99.1
h		63	100.4
SL		54	101.1

10673

W'y of blower

52	106.7	50	101.7
u		58	100.9
y		64	100.3
l		72	99.5
7		75	99.2
u		83	98.4
u		88	97.9

center of blower

u	87	94.0
u	82	98.5
y	77	99.0
l	70	99.7
7	61	100.6
u	56	101.1
52	45	102.2

10673

By hand

14

E'y of blower

52	106.7	48	101.9
u		54	101.3
y		62	100.5
l		70	99.7
7		78	98.9
u		85	98.2
u		89	97.6

E'bl of blower

u	84	98.3
u	80	98.7
7	73	99.4
l	66	100.1
7	57	101.0
u	50	101.7
52	47	102.5

10673

E. line of *Chloroceryle*

SL	106.7	4.9	101.8
ll		5.0	101.7
y		6.5	100.2
l		7.2	99.5
y		7.9	98.6
ll		8.5	98.2
nl		9.2	97.5

50' E of *Chloroceryle*

nl		6.9	99.8
ll		6.6	100.1
y		6.4	100.3
l		6.0	100.7
y		5.7	101.0
ll		5.1	101.6
SL		4.5	102.2

10673

Oly. phan

15

100' E of *Chloroceryle*

SL	106.7	6.4	100.3
ll		7.4	99.3
y		8.5	98.2
ll		8.2	97.5
y		8.8	96.9
ll		10.3	96.4
nl		10.4	96.3

125' E of *Chloroceryle*

nl		12.2	94.5
ll		11.0	95.7
y		10.5	96.2
ll		9.1	97.6
y		8.5	98.2
ll		7.6	99.1
SL		6.9	99.8

106.73

	150	E of	blat. point
SA			120 94.7
HL			124 94.3
Y			130 93.7
L			136 93.1
Y			139 92.8
HL			143 92.4
HL			145 92.2

	175	E of	blat. point
HL			134 93.3
HL			119 94.8
Y			154 96.3
L			90 97.7
Y			89 98.0
HL			77 99.0
SA			68 99.9

106.73

Clyphant "

16

	200	E of	blat. point
SA			78 98.9
HL			85 98.2
Y			90 97.7
L			128 93.9
Y			115 95.2
HL			109 95.8
HL			115 95.2

	230	E of	W2 of Mendota (60)
HL			96 97.1
HL			81 97.6
Y			81 98.6
L			79 98.8
Y			73 99.4
HL			66 100.1
SA			62 100.5
TP	1051	<u>111.06</u>	618 100.55

POSTED

111.06

W side of Mendota rd

52	98	101.2
62	104	100.6
7	110	100.0
6	115	99.5
4	118	99.2
6	127	98.3
72	134	97.6

N 1/4 of Mendota

72	129	98.1
6	123	98.7
4	115	99.5
6	110	100.0
4	105	100.5
6	99	101.1
52	94	101.6

111.06

Clyde Hunt

17

S side of Mendota

92	87	102.3
6	93	101.7
7	99	101.2
6	99	101.1
9	103	100.7
6	113	99.7
72	122	98.6

E 1/4 of Mendota

72	110	100.0
6	104	100.3
4	96	101.4
6	90	102.0
4	92	101.8
6	88	102.2
52	84	102.6

111.06

EL of Mendota

52	80	103.0
66	82	102.8
4	87	102.3
6	87	102.3
7	88	102.2
66	96	101.4
72	104	100.6

EL of Mendota

72	98	101.2
66	92	101.8
7	88	102.2
6	87	102.3
4	86	102.4
66	81	102.9
52	80	103.0

111.06

Elly Place

18

50' EL of Mendota

52	74	103.6
66	79	103.1
7	84	102.6
6	86	102.4
7	90	102.0
66	92	101.8
72	94	101.6

100' EL of Mendota

72	72	103.8
66	69	104.1
7	69	104.1
6	67	104.3
7	64	104.6
66	61	104.9
52	58	105.2

111.06

12369

Chyphant st

19

	150	E of	men data	
82			34 107.6	
h			33 107.5	
v			36 107.4	
b			36 107.4	
y			35 107.5	
h			36 107.4	
72			40 107.0	

TP 1263 12369 0.0 111.06

	200	E of	men data	
72		123.7	11.6 112.1	
h			11.5 112.2	
y			11.4 112.3	
b			11.5 112.2	
y			11.9 111.8	
h			12.0 111.7	
52			11.8 111.9	

225' E = W line of biphastans⁽⁶³⁾

	123.7	94	114.3
92			
h		94	114.3
"		96	114.1
b		93	114.4
y		93	114.4
h		92	114.5
72		87	115.0

W side of biphastans

	74	116.3
72		
h	78	115.9
y	82	115.5
b	77	116.0
y	83	115.4
h	84	115.3
52	85	115.2

12369

W 1/4 of bopstrans

SL	128.7	72	116.5
ll		73	116.4
y		75	116.2
l		72	116.5
y		73	116.4
ll		68	116.9
nl		63	117.4

center of bopstrans

nl	53	118.2
ll	58	117.9
y	62	117.5
l	60	117.7
y	63	117.4
ll	60	117.7
SL	60	117.7

12369

Chy plant

20

E 1/4 of bopstrans

SL	128.7	45	119.2
ll		44	119.3
y		45	119.2
l		49	118.8
y		54	118.3
ll		52	118.5
nl		48	118.9

ell of bopstrans

nl	42	119.5
ll	45	119.2
y	46	119.1
l	42	119.5
y	40	119.7
ll	32	120.5
SL	40	120.7

T P 484 12647 210 12159

Br SE 4

bopstrans

POSTED

12647

E Lin of Capistrano

Bm

SL	126.5	490	120.59
ll		52	121.3
y		57	120.4
l		60	120.5
y		66	119.9
ll		64	120.1
nl		64	120.1

50' E of Capistrano

nl		37	122.6
ll		35	123.0
y		32	123.3
l		30	123.5
y		29	123.6
ll		27	123.8
SL		19	124.6

12647

Capistrano

21

100 E of Capistrano

SL	126.5	11	125.4
ll		18	124.7
y		23	124.2
l		26	123.9
y		28	123.7
ll		30	123.5
nl		36	122.9

130 E of Capistrano

nl		77	114.8
ll		71	119.4
y		64	120.1
l		50	121.5
y		35	123.0
ll		23	124.2
SL		18	124.7

12647

150' E of Capetians

SA	126.5	40	122.5
SL		46	121.9
Y		52	120.9
L		68	119.7
Y		71	119.4
SL		72	119.3
NA		75	119.0

175' E of Capetians

NA		83	118.2
SL		82	118.3
Y		88	117.7
L		88	117.7
Y		77	118.8
SL		66	119.9
SA		62	120.3

12647

Clyburn ss

22

200' E of Capetians

SA	126.5	98	116.7
SL		103	116.2
Y		109	115.6
L		115	115.0
Y		120	114.5
SL		124	113.9
NA		133	113.2

7P 012 11461 1188 11449

255' E of = Justin ss (60)

NA		94	105.2
SL		87	105.9
Y		80	106.6
L		77	106.9
Y		73	107.3
SL		70	107.6
SA		67	107.9

POSTED

11461

W'd of Tustin st

52	114.6	83	106.3
ll		88	105.8
4		90	105.6
6		94	105.2
7		99	104.7
ll		105	104.1
22		110	103.6

W'd of Tustin st

22		125	102.1
ll		119	102.7
4		106	103.0
6		110	103.6
4		106	104.0
ll		101	104.5
52		99	104.7

11461

Clyffent st

23

Center of Tustin st

52		114	103.2
ll		119	102.7
4		126	102.0
6		125	102.1
4		128	101.8
ll		135	101.1
22		136	101.0

TP 000 101.93 1268 101.93

E' of Tustin st

52	101.9	00	101.9
ll		04	101.5
4		07	101.2
4		10	100.9
4		14	100.5
ll		18	100.1
22		20	99.9

10193

E of Justin st

n2	101.9	28	99.1
u		27	99.2
y		24	99.5
h		21	99.8
y		19	100.0
u		16	100.3
52		11	100.8

Edin of Justin

52		201	99.9
u		25	99.4
y		28	99.1
h		20	98.9
y		32	98.7
u		34	98.5
n2		35	98.4

Bm 53

Justin

10193

Clyde st

24

30' E of Justin st

n2	101.9	60	95.9
u		60	95.9
y		57	96.2
h		56	96.3
y		54	96.5
h		47	97.2
52		41	97.8

50' E of Justin

52		56	96.3
u		64	95.5
y		73	94.6
h		80	93.9
y		82	93.7
u		88	93.1
n2		96	92.3

101.93

9306

Clyburn

25

	100	E of	Justin	
72		101.9	16.8	85.1
ll			15.4	86.5
7			13.4	88.5
l			12.3	89.6
7			11.0	90.9
ll			9.9	92.0
SL			9.0	92.9
TP	0.33	9306	9.20	92.73
	15.4	E = intersection of		Element in road
SL		93.0	0.1	92.9
ll			2.0	91.0
7			4.1	89.0
l			5.7	87.3
7			7.4	85.6
ll			9.7	83.8
72			11.3	81.7

	174	E =	W. of	Element
72		93.0	9.5	83.5
ll			8.0	85.0
7			7.2	85.8
l			6.1	86.9
7			4.5	88.5
ll			3.5	89.4
SL			1.2	91.8
	19.4	E =		W. of Element
SL			0.2	92.8
ll			1.3	91.7
7			3.0	90.0
l			4.3	88.7
7			6.0	87.0
ll			7.5	85.5
72			8.9	84.1

9300

214 $\epsilon =$ height of Elsinore

n2	98.0	96	83.4
u		61	86.9
y		53	87.7
b		45	88.5
y		29	90.1
u		16	91.4
SL		04	92.6

234 $\epsilon = \epsilon$ of Elsinore

SL		11	91.9
u		19	91.1
y		31	89.9
b		49	88.1
y		61	86.9
u		77	85.6
n2		92	83.8

9306

255' $\epsilon =$ $\left\{ \begin{array}{l} \text{max sin of beam} \\ \text{E ab of Elsinore} \end{array} \right.$ 26)

n2	93.0	112	81.8
u		98	83.2
y		85	84.5
b		67	86.2
y		55	87.5
u		39	89.1
SL		29	90.1

nll of Elsinore

SL		25	90.5
u		40	89.0
y		56	87.4
u		72	85.8
y		87	84.3
u		107	82.3
n2		121	81.9

POSTED

9306

275- $\epsilon =$ (also w/ 1/4 y blow
Intersect of n line of Elsinan)

nr	93.0	124	80.6
ll		109	82.1
y		90	84.0
l		70	86.0
4		54	87.6
ll		35	89.5
sl		24	90.6

secter of blow st

sl	26	90.4
ll	37	89.3
y	50	88.0
l	63	86.7
4	85	84.5
ll	109	82.1
nr	133	79.7

9306

Chyphus

27

 ϵ 1/4 y blow st

nr	93.0	140	79.0
ll		120	81.0
y		98	83.2
l		71	85.9
4		56	87.4
ll		40	89.0
sl		27	90.3

 ϵ ll of blow st

sl	30	90.0
ll	43	88.7
y	52	87.4
l	78	85.2
4	101	82.9
ll	123	80.7
nr	146	78.4

9366

Edm of blow st

22	93.0	163	77.7
21		135	79.5
7		110	82.0
1		81	84.9
7		61	86.9
21		46	88.4
52		26	89.4

Bm SE
blow

TP 005 89.49 362 89.49

5-0' E of blow

52	89.5	71	82.4
21		96	79.9
7		124	77.1
TP	009	77.46	1212 77.37
1	77.5	40	73.5
7		48	72.7
21		77	69.8
22		100	67.5

7746

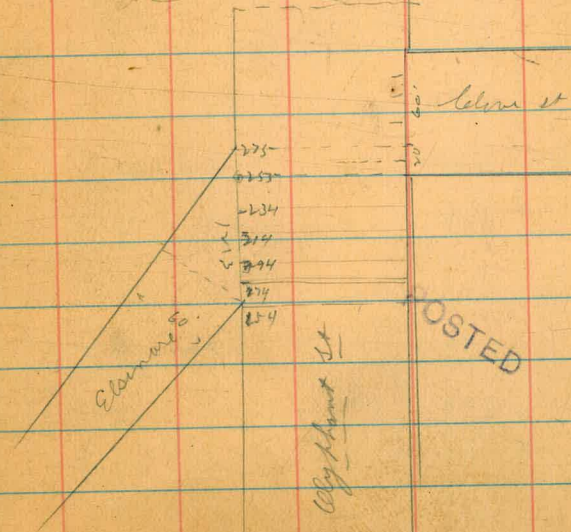
Edm of blow st

28

78.5' E of blow = Purple line

22	77.5	155	62.0
21		129	64.6
7		102	67.3
1		77.5	69.6 Bm 69.71
7		53	72.2
21		25	75.2
32		09	79.4

Edm of blow st is 70' mid E of st



cross-section of Elsinore St (60')

from E line of Catalina to end at Alhambra

E line of Catalina = 192' W of Pt of way out

Bm SE

Catalina

1256 14180 129.24

52 126 129.2

66 125 129.3

7 125 129.3

6 130 128.6

7 134 128.4

66 133 128.5

22 134 128.6

42' E of m } = 150' W of RR in n
40' E of m

22 91 132.7

66 93 132.5

7 98 132.0

6 100 131.8

4 99 131.9

66 100 131.8

52 100 131.8

14180

Elsinore St

29

100' W of Pt of way out

52 141.8 66 135.2

66 64 135.4

7 60 135.8

6 51 136.8

7 44 137.4

66 40 137.8

22 37 138.1

75' W of Pt of way

22 02 141.6

66 11 140.7

7 14 140.4

6 23 139.5

7 30 138.8

66 40 137.8

52 48 137.0

14180

	50'	W of	RT of	W of	n
S2	141.8		5.7	138.1	
ll			2.9	138.9	
4			2.0	139.8	
l			1.2	140.6	
7			0.4	141.4	
TP	900	15057	0.9	141.5	
ll			8.0	142.5	
n2			7.3	143.2	

15' W of RT of W of n

n2			6.0	144.5	
ll			6.5	144.0	
7			7.2	143.3	
6			8.3	142.2	
9			9.2	141.3	
ll			9.6	140.9	
S2			9.6	140.9	

15057

Clearance

30

+29'E - S } = width of RR RT of way (26)
+15'E - n

S2	150.5	7.0	143.5
ll		7.0	143.5
4		6.6	143.9
4		4.0	146.5
4		1.0	149.5
ll		1.0	149.5
ll		4.0	146.5

10'E = W Side RR Bank

n2		0.9	150.1
ll		0.7	149.8
4		0.8	149.7
l		0.8	149.7
9		1.0	149.5
ll		0.8	149.7
S2		0.6	149.9

15057

74 ft of Bank
+162 = 10' W of E line of RR R.R. of way

SL	150.5	0.7	150.1
LL		0.4	150.1
7		0.5	150.0
6		0.5	150.0
7		0.5	150.0
LL		0.5	150.0
RL		0.4	150.1

+5' = 5' W of E line of RR R.R. of way

RL		1.6	146.9
LL		2.6	147.9
7		3.4	147.1
7		3.9	146.6
7		4.1	146.4
LL		4.1	146.4
SL		3.8	146.7

15057

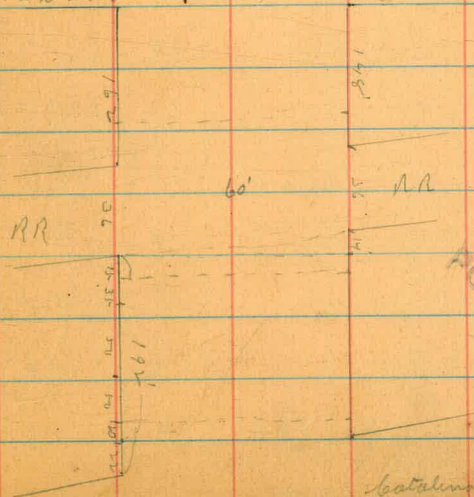
Eleanor

31

E line of RR R.R. of way = (162' W of walls on N
(148' W of walls on S)

SL	150.5	3.4	147.1	
LL		3.6	146.9	
7		3.5	147.0	
6		3.1	147.4	
7		2.8	147.7	
LL		1.8	148.7	
RL		1.1	149.4	
TP	12.12	162.45	0.15	150.36

RR walls



16248

62' E of RR on m } 100' W of Wells
48' S of RR on S }

72	162.5	82	154.3
61		87	153.8
7		92	153.3
6		93	153.2
7		99	152.6
61		101	152.4
52		103	152.2

50' W of Wells

52		53	157.2
61		47	157.8
7		46	157.9
6		36	158.9
7		28	159.7
61		26	159.9
72		23	160.2

T.P. 1210 17426 022 16226

17436

Elimina 25

32

W side of Wells at 160'

72	174.4	82	166.2
61		89	165.5
7		97	164.7
6		88	165.6
7		95	164.9
61		90	165.4
52		81	166.3

W side of Wells at

52		62	168.2
61		65	167.9
7		70	167.4
6		68	167.6
7		69	167.8
61		75	166.9
72		70	167.4

174.36

W 1/4 of Wells st

nr	174.4	56	168.8
ll		66	167.8
v		56	168.8
l		58	168.6
v		58	168.6
ll		48	169.6
sr		44	170.0

Center of Wells st

sr		27	171.7
ll		21	171.3
v		24	171.0
l		35	170.9
v		25	171.9
ll		24	171.0
nr		30	171.4

174.36

Eldorado st

23

E 1/4 of Wells st

nr	174.4	08	173.6
ll		04	174.0
v		12	173.2
l		16	172.8
v		12	173.2
ll		08	173.6
sr		03	174.1
TP	904	18322	018 174.8

E 1/4 of Wells st

sr	183.2	58	177.4
ll		62	177.0
v		66	176.6
l		68	176.4
v		63	176.9
ll		64	176.8
nr		57	177.5

POSTED

18322

	Elev. of	Wells at	
nr	183.2	354	1796.8 Bm NE H wells
tl		24	180.8
4		20	181.2
6		20	181.2
4		13	181.7
tl		12	182.0
52		04	182.8

50' E of wells at

52	16	181.6
tl	24	180.8
7	32	180.0
6	43	178.9
4	50	178.2
tl	59	177.3
nr	65	176.7

18322

Elevation at

24

	100	E of	Wells at	
nr	183.2	114	171.8	
tl		102	173.0	
4		91	174.1	
6		73	175.9	
7		58	177.4	
tl		45	178.7	
52		40	179.2	

79 00 175.97 725 175.97

150 E of wells at

52	404	176.3	
tl	176	11	174.9
4		30	173.0
6		43	172.7
4		59	170.1
tl		71	168.9
nr		79	168.1

17597

	200'	E of	Wells	at
22	176.0	109	165.1	
21		100	165.4	
4		95	166.5	
6		80	168.0	
7		70	169.0	
21		60	170.0	
S2		47	171.6	

220' E = W line of Anacapa (60')

S2	56	170.4
21	67	169.3
7	78	168.2
6	87	167.3
7	100	166.0
21	110	165.0
22	126	163.4

17597

Elsman st

35

	W of	Anacapa	at
22	176.0	120	163.0
21		118	164.2
4		110	165.0
6		97	166.3
7		85	167.5
21		72	169.6
S2		65	169.8

W of Anacapa st

S2	72	168.8
21	84	167.6
7	86	166.4
6	108	165.2
7	120	164.0
21	131	162.9
22	140	162.0

POSTED

17507

Center of Anacapa II

22	176.0	147	161.3
22		124	162.6
7		124	163.6
6		110	165.0
"		104	166.0
22		90	167.0
52		76	168.4

E 1/4 of Anacapa

52		82	167.7
22		97	166.3
7		108	165.2
6		121	164.0
TP	059	12701	955 166.2
7		45	162.5
22		55	161.5
22		70	160.0

16701

Elsmore II

26

E 1/4 of Anacapa

22	167.0	79	159.1
22		63	160.7
7		54	161.6
6		40	163.0
7		28	164.2
22		17	165.6
52		09	167.0

Edin of Anacapa II

52	059	16642	13m SE Anacapa
22		22	164.8
7		33	163.7
6		47	162.3
7		65	160.5
22		70	159.7
22		88	158.2

POSTED

1670'

15523

Elsmore 11

37

	50'	E of	Anacapa St	
22		167.0	147	152.3
66			127	154.3
4			114	155.6
1			93	157.7
4			76	159.4
11			68	160.2
52			50	162.0
TP	040	155.33	141.8	154.83

	150'	E of	Anacapa	
22		155.2	159	139.3
11			130	141.6
4			128	142.4
6			118	143.4
7			98	145.4
11			87	146.5
52			72	148.0
TP	016	142.78	126.1	142.62

	100'	E of	Anacapa St	
52			704	154.8
11			18	153.4
4			32	152.0
1			58	149.4
4			65	148.7
11			79	147.3
22			90	146.2

	200'	E of	Anacapa St	
52		142.8	32	139.6
11			41	138.7
4			52	137.2
6			70	135.8
4			76	135.2
11			88	134.0
22			90	133.8

14278

	250	E of Anacapa St	
nr	142.8	121	130.7
ll		114	131.2
y		107	132.1
l		101	132.8
y		90	133.8
ll		92	133.6
SR		72	135.6

300 E of Anacapa St

SR		94	133.4
ll		98	133.0
y		105	132.3
l		116	131.2
y		122	130.6
ll		132	129.6
nr		140	128.8

14279

Elsenore St

38

360 E = W side of Warrington St

nr	142.8	170	125.8
ll		163	126.5
y		154	127.4
l		144	128.4
y		138	129.0
ll		130	129.8
SR		1230	130.5

70 151 131.8 1230 130.8 Bm SW Warrington

Nbb of Warrington

SR	132.0	18	130.2
ll		26	129.4
y		32	128.8
l		37	128.3
y		43	127.7
ll		57	126.3
nr		63	125.7

63

13199

	N ¹ / ₄ of	Warrington	
SR	132.0	68	125.2
ll		62	125.8
y		54	126.6
b		46	127.4
y		42	127.8
ll		30	129.0
SR		21	129.9

	Center of	Warrington	
SR		24	129.6
ll		34	128.6
y		42	127.8
b		51	126.9
y		57	126.3
ll		65	125.5
SR		70	125.0

13199

Edmar. 22

39

	E ¹ / ₄ of	Warrington	
SR	132.0	72	124.8
ll		65	125.5
y		58	126.2
b		48	127.2
y		41	127.9
ll		32	128.8
SR		26	129.4

	E 1/2 of	Warrington	
SR		31	128.9
ll		35	128.5
y		44	127.6
b		50	127.0
y		62	125.8
ll		70	125.0
SR		80	124.0

13199

Edge of Warrington

22	80	124.0
ll	72	124.8
7	62	125.8
l	52	126.8
7	45	127.5
ll	40	128.0
sl	36	128.4

50 E of Warrington

sl	85	123.5
ll	85	123.5
7	90	123.0
l	93	122.7
7	99	122.1
ll	106	121.4
22	109	121.1

TP 157 120.62 12.74 119.65

12062

Elderside St

40

100 E of Warrington

22	38	116.8
ll	38	116.8
7	35	117.1
l	34	117.2
7	33	117.3
ll	29	117.7
sl	30	117.6

150 E of Warrington

sl	75	113.1
ll	77	
7	80	
l	81	112.5
7	85	
ll	89	
22	87	111.9

12062

200' E of Warrington

nr		143	106.3
ll		140	
y		138	
b		133	107.3
7		128	
ll		123	
SL		118	108.8

TP	148	109.55	1252	108.10
----	-----	--------	------	--------

250' E of Warrington

SL		44	105.2
ll		46	
y		46	
l		48	104.8
y		52	
ll		57	
nr		62	103.4

10955

Elmore

41 2

200' E of Warrington

nr		77	101.9
ll		76	
y		74	
b		75	102.1
7		74	
ll		72	
SL		68	102.8

350' E of Warrington

SL		81	101.5
ll		85	
y		87	
l		90	100.6
y		94	
ll		96	
nr		97	99.9

10955

400 E of Warrington

M 109 98.7

U 107

V 104

L 102 99.4

Y 100

M 98

S2 95 100.1

450 E of Warrington

S2 102 99.4

U 105

V 107

L 107 98.9

Y 108

U 111

M 114 98.2

TP 0.99 98.47 1207 97.48

9847

Clearmore

42

500 E of Warrington

M 51 95.4

U 23

V 23

L 22 96.3

Y 18

M 18

S2 14 97.1

550 E of Warrington

S2 57 94.8

U 45

V 51

L 58 97.7

Y 55

U 61

M 65 97.0

POSTED

9847

	600	E of	Washington	
nl			95	89.0
tl			90	
7			82	
6			73	91.2
2			62	
tl			54	
SL			47	93.8
TP	025	91.33	741	91.06 <small>884 Brm Su</small>
	650	E = w line of <i>Chlorococcoides</i> 28(70)		
SR			02	97.1
tl			07	90.6
7			13	90.0
6			26	88.9
7			38	87.5
tl			45	86.8
nl			49	86.4

9133

Eleimere 21

43

	W of <i>Chlorococcoides</i>	
nl	53	86.0
tl	57	86.2
7	47	86.6
6	41	87.2
7	29	88.0
tl	21	89.2
SL	15	89.8

	W of <i>Chlorococcoides</i>	
SL	21	88.2
tl	27	87.6
7	46	86.7
6	55	85.8
5	60	85.3
tl	62	85.1
nl	61	85.2

9133

Center of Chatsworth

72	64	84.9
11	63	85.0
7	60	85.3
6	58	85.5
4	54	85.9
11	45	86.8
52	38	89.5

E 1/4 of Chatsworth

52	46	86.7
11	54	85.9
7	60	85.3
6	66	84.7
7	68	84.5
11	72	84.1
72	73	84.0

9133

Eldorado

44

E 1/4 of Chatsworth

72	85	87.8
11	78	87.5
7	75	87.8
6	73	84.0
7	67	84.6
11	60	85.3
52	54	85.9

E 1/4 of Chatsworth

52	52	85.7
11	66	84.7
7	76	87.7
6	82	83.1
7	82	87.1
11	85	87.8
72	92	87.1

9/23

	50'	E of	blots	width
RR			114	79.9
U			110	80.3
Y			105	80.8
L			101	81.2
Y			98	81.5
L			92	82.1
SR			88	82.5

100' E of blots width

SR			94	81.9
U			97	81.6
Y			101	81.2
L			104	80.9
Y			108	80.5
U			114	80.8
RR			119	79.4

TP	890	9028	995	87.38
----	-----	------	-----	-------

9/28

Eleanor

45

140' E of blots width

RR			124	76.9
U			124	77.9
Y			119	78.4
Y			113	79.0
Y			107	79.6
U			102	80.1
SR			97	80.6

150' E of blots width

SR			128	77.5
U			127	77.6
Y			126	77.7
L			127	77.6
Y			129	77.4
U			128	77.5
RR			130	77.3

9028

	155'	E of	blot	num
n2			120	783
b			116	78.7
v			112	79.1
B			109	79.4
7			104	79.9
bl			100	80.3
SL			98	80.5

	200'	E of	blot	num
SL			30	86.3
bl			42	86.1
v			40	86.3
b			38	86.5
B			31	87.2
bl			28	87.5
n2			31	87.2
TP	1220	10167	0.81	89.47

10167

Elevation

46

	250'	E of	blot	num
n2			58	95.9
bl			58	95.9
v			57	96.0
b			57	96.0
v			59	96.8
bl			60	95.7
SL			63	95.4

TP	566	10591	1.42	100.25
----	-----	-------	------	--------

	200'	E of	blot	num
SL			33	104.6
bl			35	102.4
v			37	102.2
b			41	101.8
v			48	101.1
bl			55	100.4
n2			65	99.4

POSTED

10591

350	♀	♂	blab	unit
nl			79	98.0
bl			73	98.6
7			61	99.8
6			49	101.0
4			27	102.2
ll			3.0	102.9
sl			25	103.4

400	♀	♂	blab	unit
sl			67	99.2
ll			75	98.6
7			83	97.6
6			93	96.6
5			102	95.7
4			112	94.7
nl			124	93.5

10591

Elmire

47

450	♀	♂	blab	unit
nl			137	90.2
bl			133	92.6
7			124	93.5
6			119	94.0
4			119	94.0
ll			109	95.0
sl			105	95.8
TP	645	9536	11.00	94.91

511	♀	♂	nl	blab	unit
			17	92.7	
			370	92.3	
			47	90.7	
			63	89.1	
			82	87.2	
			95	85.9	
			121	83.3	

POSTED

9536

NL	W ^{1/4} of Co. section	
NL	121	83.3
H	106	84.8
7	88	86.6
6	70	88.4
7	50	90.0
H	31	92.3
S2	20	93.4

	W ^{1/4} of Co. section	
S2	26	92.8
H	34	92.0
7	46	90.8
6	60	89.4
7	74	88.0
H	98	85.6
NL	120	83.4

9536

Clemson W

48

	W ^{1/4} of Co. section	
NL	119	83.6
H	107	84.7
7	87	86.3
6	73	88.1
7	58	89.6
H	42	91.7
S2	29	92.5

	E ^{1/4} of Co. section	
S2	28	92.6
H	37	91.7
7	48	90.6
6	69	88.5
7	87	86.7
H	107	84.7
NL	117	83.1

POSTED

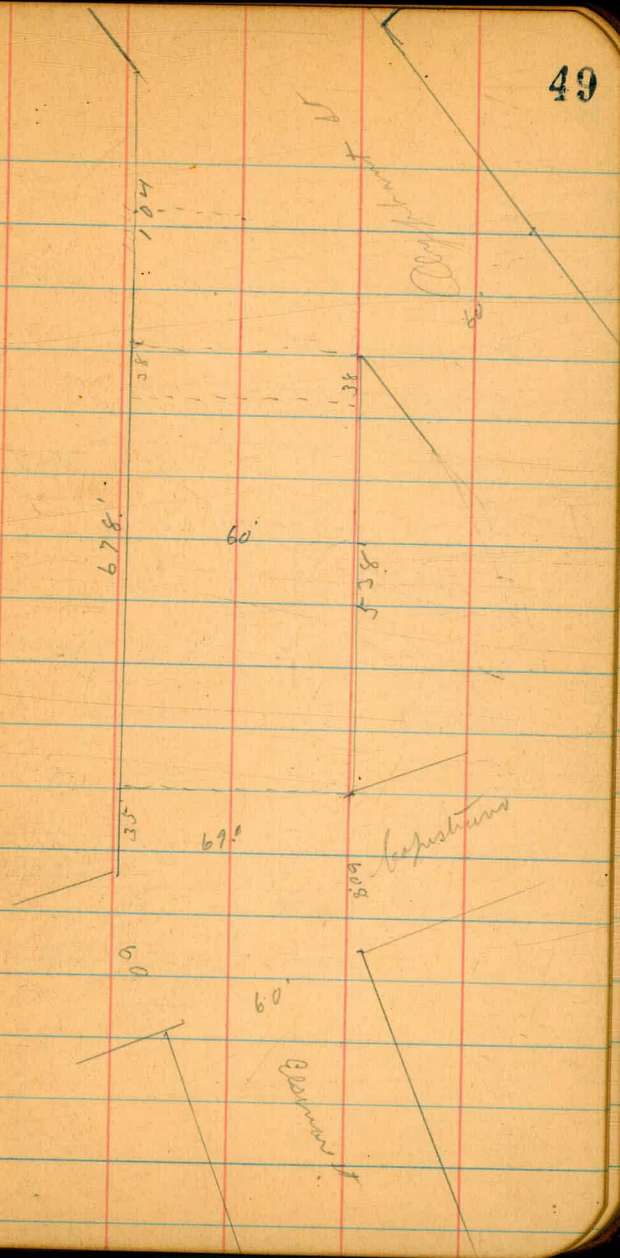
9526

Elev of *Aspidotermes*

n2	113	84.1
ll	99	85.5
y	90	86.6
l	76	87.8
u	55	89.9
ll	31	92.7
sl	17	93.7
sl	15	93.9
ll	23	92.1
yl	46	90.8
l	68	88.6
u	74	88.0
ll	84	87.0
n2	104	86.0
TP	125	94.2

Elev of *Aspidotermes*

(69)

Bm se
Aspidotermes

35' E of Capistano on N } = 00
 88' W on S

	808	10229	9421	Bm SE Capistano
SL		81	94.7	
U		90		
Y		113		
6		120	90.3	
Y		120		
U		120		
U		123	90.0	
	50' E of	Capistano		
U		112	91.1	
U		100		
Y		93		
6		79	94.4	
Y		58		
U		40		
SL		30	99.3	

10229

Eldorado et

50

100' E of Capistano

SL		00	102.3	
U		21		
U		24		
6		49	97.4	
U		64		
U		80		
U		94	94.9	
	150' E of	Capistano		
U		106	91.4	
U		78		
Y		62		
6		46	99.4	
TP	772	105.57	444	975.5
Y			54	
U			28	
SL			02	102.1

POSTED

10557

185' E of Baptistown

SL	4.2	101.4
LI	6.3	
Y	8.0	
b	9.6	96.0
y	11.0	
LI	13.2	
SL	15.8	99.8

200' E of Baptistown

SL	15.9	99.1
LI	12.6	
Y	10.0	
b	9.3	96.3
y	8.5	
LI	7.1	
SL	4.7	100.9

10557

Elamers st

51

230' E of Baptistown

SL	5.0	100.6
LI	7.5	
Y	9.6	
b	11.4	94.2
y	13.0	
LI	15.0	
SL	17.9	97.7

250' E of Baptistown

SL	18.5	94.1
LI	15.4	
Y	13.6	
b	12.0	93.6
y	9.4	
LI	7.1	
SL	5.4	100.2

10557

	300	E of	baptism	
SR			84	97.2
ll			106	
y			125	
TP	351	9610	1298	9259
h			50	91.1
y			62	
ll			80	
nr			101	86.0
	325	E of	baptism	
nr			85	87.6
ll			70	
y			60	
h			52	90.9
y			43	
ll			27	
SR			01	96.0

9610

Elmore St

52

	350	E of	baptism	
SR			18	94.3
ll			57	
y			48	
h			57	90.4
y			70	
ll			86	
nr			102	85.9
	400	E of	baptism	
nr			125	83.6
ll			116	
y			102	
h			93	86.8
y			76	
ll			63	
SR			50	91.1

9610

	450	E of	Capestrano	
SR			97	86.4
u			106	
v			120	
w			132	82.9
7R	312	8641	1281	83.29
y			44	
u			57	
nr			70	79.4
	500	E of	Capestrano	
nr			145	71.9
u			103	
y			104	
w			99	77.0
y			81	
u			62	
SR			48	81.6

8641

Ellemer v

58

	510	E of	Capestrano	
SR			75	78.9
			88	
y			107	
w			128	73.6
y			140	
u			158	
nr			177	68.5
	558	E of =	Intersection of Cbly plant or S	
nr			118	74.6
u			105	
y			92	
w			78	78.6
y			65	
u			57	
SR			47	81.7

8641

558' E = 50' to 1st of measurement

n2 89 77.5

u 80

y 63

st 45 81.9

y 35

bb = n2 of 1st part 27 84.0

590' E = 30' to 1st of measurement

n2 60 80.4

u 50

y 34

b = n2 of 1st part 18 82.6

642' E = subtract a n2

n2 59 80.5

54

cross-section of Poe st (60')
 from E line of batavia to the Bay

E line of batavia

	1243	12980	127.37	Bm ne batavia
N2			124	127.4
U6			122	
3			122	
1			118	128.0
2			118	
U			119	
S2			117	128.1
	00 on S2 24 2' on d } = 00			
S2			117	128.1
U			116	
1			114	
6			110	128.8
7			110	
U			111	
			11.4	128.4

Handwritten notes:
 Poe st
 12980

13980

Poe st

55

50' E of batavia - S

N2	85	131.5
U	80	
1	78	
6	78	132.0x
1	80	131.8
U	84	
S2	91	130.7

90' E of batavia

S2	54	134.4
U	59	
1	60	
6	56	134.2
1	57	
U	52	
N2	50	134.8

Handwritten symbol:
 A large circle with a vertical line through it, resembling a stylized '8' or a specific survey marker.

13980

15197

Pae et

56

	116	E of	Catalina	
22			45	135.3
ll			44	
✓			41	
l			46	135.2
7			47	
ll			46	
SR			35	136.3
TP	1264	15197	0.47	139.33
	1300	E of	Catalina	
SR			66	145.4
ll			73	
7			86	
l			110	141.0
7			121	
ll			122	
22			128	139.2

	170	E of	Catalina	
22			10.3	141.7
ll			21	
7			87	
l			84	143.6
7			90	
ll			70	
SR			52	146.8
	200	E of	Catalina	
SR			75	144.5
ll			62	P
7			58	
l			57	146.3
7			59	
ll			59	
SR			62	145.8

15-197

240' E = RR Rtd of way on n

22	26	149.4
21	30	
20	29	
16	32	148.8
14	35	
11	37	
SL	40	148.0

$$\begin{matrix} 00 \text{ on} \\ + 11' \end{matrix} \left. \begin{matrix} E \text{ on } S \\ \text{line} \end{matrix} \right\} = \begin{matrix} \text{width of RR} \\ \text{of way} \end{matrix} \left. \begin{matrix} R.R. \text{ (60)} \\ \text{of way} \end{matrix} \right\}$$

SL	33	148.7
11	32	
10	30	
6	28	149.2
4	27	
11	27	
22	26	149.4

15-197

Page 4

57

25' E of rd of way

22	28	149.2
11	27	
7	25	
11	24	149.6
10	23	
11	23	
SL	20	15.00

27' E of rd of way RR

SL	10	151.0
11	09	
10	08	
6	09	151.1
4	05	
11	08	
22	02	151.8
TP	808	16005-00
		15-197

PO

16095

E line of RR N of way 227' N of wells S...
241' N of wells S...

nr	81	152.0
ll	78	
7	80	
6	84	151.7
7	84	
ll	84	

SR	83	151.8
----	----	-------

205 W of Wells st = 22' E of RR S

SR	63	153.8
ll	60	
7	62	
6	61	154.0
7	55	
ll	46	
nr	41	156.0

16095

Page 58

200	204	Wells st
SR		55 154.6
ll		52
7		50
6		43 155.8
7		36

190	204	Wells st
SR		42 155.8
ll		41
7		39
78'		28

160	W of wells	
SR		40 159.1

1172	170.57	110	158.95
200	W of wells		

nr		42 166.5
ll		43

POSTED

17067

	120'	w of	Wells	st
m2			5.2	165.5
ll			4.0	
y			3.0	
l			3.0	167.7
	160'	w of	Wells	
m2			8.0	162.7
ll			7.2	
y			5.9	
l			4.8	165.9
ll			3.4	
y			1.4	
75'			3.0	167.7

17067

Pae et

59

	150'	w of	Wells	st
S2			1.0	169.7
ll			2.8	
y			4.0	
l			5.3	165.4
y			6.6	
ll			7.8	
m2	100'	w of	8.8	161.9
	100'	w of	Wells	st
m2			11.7	159.0
ll			10.6	
y			9.5	
l			8.6	162.1
y			8.0	
ll			7.0	
S2			6.2	164.5

17067

50' w of wells st

SA		86	162.1
HL		97	
Y		105	
L		115	159.2
Y		122	
HL		132	
NA		139	156.8
TP	103	16033	1137 15930
	Whim of Wells st (60')		
SA		10	159.3
HL		17	
Y		25	
HL		32	157.1
Y		40	
HL		48	
NA		58	154.5

13m SW
wells

16033

Page st

60

nbb of wells st

NA		62	154.1
HL		52	
Y		45	
L		39	156.4
Y		30	
HL		20	
SA		11	159.2

nbb of wells st

SA		15	158.8
HL		22	
Y		31	
L		40	156.3
Y		48	
HL		56	
NA		66	153.7

POSTED

16033

Center of Wells at

72	74	1533
6	63	
7	52	
6	43	156.0
7	36	
6	27	
52	21	158.2

8 1/4 of wells at

82	25	157.8
6	32	
7	40	
6	48	155.5
7	57	
6	66	
72	74	152.9

16033

Pae at

61

E of wells at

71	81	152.2
6	72	
7	61	
6	53	155.0
7	46	
6	37	
52	30	157.3

E of wells at

52	35	156.8
6	42	
7	51	
6	59	154.4
7	68	
6	80	
72	89	151.4

POSTED

16033

	50'	E of	Wells	at
nr			130	147.3
ll			122	
y			113	
l			105	149.8
y			94	
ll			86	
SR			77	152.6
TP	096	15069	1060	149.3
	100'	E of	Wells	at
SR			10	149.7
ll			15	
y			26	
l			34	147.3
y			40	
ll			49	
nr			57	145.0

15069

Pae

H

E2

	150'	E of	Wells	at
nr			87	142.0
ll			76	
y			68	
l			60	144.7
y			48	
ll			40	
SR			32	147.5
	200'	E of	Wells	at
SR			83	142.4
ll			96	
y			102	
l			115	139.2
y			130	
TP	060	15079	1252	138.7
ll			27	
nr			45	134.3

13879

250 E of wells st

72		126	126.2
66		120	
7		108	
6		97	129.1
7		88	
66		76	
52		65	132.3

7P 0.15 12676 1218 12661

300 E of wells st

52		05	126.3
6		12	
7		19	
6		27	124.1
7		34	
66		42	
72		46	122.2

12676

Pat st

350 E of wells st

72		85	128.5
66		80	
7		74	
6		68	120.0
7		64	
66		63	
52		59	120.9

400 E of wells st

52		81	118.7
66		85	
7		91	
6		96	117.2
7		100	
66		102	
72		106	116.2

POSTED

12676

450 E of wells

nr		116	115.2
ll		113	
y		106	
b		102	116.6
y		97	
ll		90	
SR		87	118.1
TP	041	11447	1270
	500	E of wells	114.06
SR		70	113.5
ll		00	
y		06	
b		08	113.7
y		17	
ll		22	
nr		25	112.0

11447

Page 25

C3

550 E of wells

nr		57	108.8
ll		53	
y		51	
b		46	109.9
y		40	
ll		38	
SR		32	111.3
	600	E of wells	
SR		44	110.1
ll		51	
y		54	
b		61	108.4
y		68	
ll		76	
nr		75	107.0

11447

640' E = W side Warrington (60')

n2	90	105.5
bc	85	
7	79	
6	72	107.3
7	66	
bc	61	
SL	55	109.0

W side of Warrington

SL	58	108.7
bc	62	
7	64	
6	74	107.1
7	83	
bc	90	
n2	94	105.1

11447

Pos

W

W side of Warrington

n2	96	104.9
bc	90	
7	87	
6	83	106.2
7	73	
bc	70	
SL	64	108.1

Center of Warrington

SL	69	107.6
bc	77	
7	85	
6	85	106.0
7	90	
bc	94	
n2	100	104.5

POSTED

E4

11447

E 1/4 of Warrington

N2	104	104.3
tl	94	
7	92	
tl	89	105.6
7	82	
tl	77	
SL	70	107.5

E 1/4 of Warrington

SL	79	106.6
tl	83	
7	85	
tl	92	105.3
7	97	
tl	100	
N2	106	103.9

11447

Page 25

65

E 1/4 of Warrington

N2	107	103.6
tl	100	
7	97	
tl	92	105.3
7	86	
tl	83	
SL	76	106.7

S 1/4 of Warrington

SL	90	105.5
tl	94	
7	97	
tl	103	104.2
7	105	
tl	108	
N2	114	103.1
TP	115	103.8
	1234	102.12

Ben N

SE

Warrington

10328

100' E of Warrington

nl	34	99.9
ll	30	
7	28	
6	22	101.1
4	19	
ll	17	
sl	12	102.1

150' E of Warrington

sl	48	98.5
ll	52	
7	55	
4	57	97.6
7	60	
ll	61	
sl	65	96.8

10328

Pae at

C6

200' E of Warrington

nl	80	95.3
ll	78	
7	77	
6	76	95.7
4	74	
ll	73	
sl	71	96.2

250' E of Warrington

sl	80	95.3
ll	79	
7	83	
6	85	94.1
7	86	
ll	88	
nl	90	94.3

94.1
POSTED

10328

300 E of Warrington

22 10.0 93.3

ll 9.8

4 9.4

6 9.2 94.1

7 8.8

ll 8.7

52 8.6 94.7

350 E of Warrington

52 9.8 93.5

ll 10.1

4 10.1

6 10.6 92.7

4 10.8

ll 11.3

22 12.1 91.2

7P 2.60 95.13 10.75 92.52

9513

Page 25

67

400 E of Warrington

22 6.2 88.9

ll 5.4

7 4.8

6 4.6 90.5

7 4.4

ll 3.8

52 3.3 91.8

450 E of Warrington

52 5.9 89.2

ll 6.7

7 7.8

6 9.2 85.9

7 9.7

ll 10.3

22 12.0 84.1

POSTED

9543

500	E	W	W	W
72			103	84.8
62			99	
4			94	
62			88	86.3
7			82	
62			77	
52			71	88.0

550	E	W	W	W
52			83	86.8
62			87	
4			93	
6			97	85.4
7			102	
62			112	
72			116	83.5

9513

Page 27

68

600	E	W	W	W
72			128	82.3
62			124	
7			117	
6			114	83.7
5			114	
62			111	
52			113	83.8
79	274	85.32	1249	182.64
	640	84.3	224	64.0
52			27	82.6
62			23	82.0
4			27	81.6
6			40	81.3
7			44	80.9
62			49	80.6
72			54	79.9

8532

N¹/₄ of blattmanit

NR	62	79.1
U	55	79.8
7	49	80.0
1	45	80.8
4	42	81.1
U	38	81.5
SR	34	81.9

W¹/₄ of blattmanit

SR	48	80.5
U	37	80.2
7	32	80.1
1	29	79.4
9	25	78.8
U	22	78.1
NR	19	77.4

8532

Page 69

69

Center of blattmanit

NR	83	77.0
U	77	77.6
7	71	78.2
1	64	78.9
4	62	79.1
U	61	79.2
SR	56	79.7

E¹/₄ of blattmanit

SR	59	79.4
U	64	78.9
7	70	78.3
1	75	77.8
9	82	77.1
U	92	76.1
NR	92	76.1

POSTED

8532

all about wood st

NL		95	75.8
ll		94	75.9
7		91	76.2
6		89	76.4 x
7		84	76.9
ll		80	77.3
SL		74	77.9

E line of Chetworth st

SL		80	77.3
ll		85	76.8
7		89	76.4
6		93	76.0
4		95	75.8
ll		98	75.5
NL	110	99	75.40

one
NE #
-ll

7650

Pal st

70

50' E of Chetworth st

NL		39	72.6
ll		36	72.9
7		35	73.0
6		33	73.2
7		28	73.7
ll		28	73.7
SL		24	74.1

100' E of Chetworth st

SL		55	71.0
ll		58	70.7
7		60	70.5
6		62	70.3
7		65	70.0
ll		65	70.0
NL		65	70.0

7650

	150	E of	blacks unit	
n2			84	68.1
u			84	68.1
y			84	68.1
b			84	68.1
y			82	68.7
u			76	68.9
52			72	69.3

200 E of blacks unit

52			83	68.2
u			87	67.8
y			90	67.5
b			95	67.0
y			90	67.5
u			88	67.7
n2 = Top of Bank RR			63	70.2

198 E of blacks unit

n2 = Top of Bank RR			85	68.0
---------------------	--	--	----	------

7650

Page 21

71

	245	E of	blacks unit	
n2			72	69.3

250 E of blacks unit

n2			47	71.8
u			72	69.3
u			71	69.4
y			70	69.5
b			74	69.1
15 = Top of Bank Brook			74	69.1
y			100	66.5

u			107	65.8
52			101	66.4

270 E of blacks unit

52			115	65.0
u			107	65.8
y = Bank RR Brook			77	68.8
b			75	69.0
y			72	69.7

b = RR Brook			80	68.5
74			75	69.0
76			76	68.9
n2			39	72.6

POSTED

7650

280' E of Chatsworth

SL	111	65.4
TI	78	68.7
ll	77	68.8

290' E of Chatsworth

SL	764 RR Basin	80	68.5
----	--------------	----	------

300' E of Chatsworth

SL	80	68.5
ll	78	68.7
γ	79	68.6
δ	83	68.2
γ	44	67.1
ll	30	77.5
HA	27	74.3

TP	703	8254	099	751
----	-----	------	-----	-----

8254

Page 44

72

325' E of Chatsworth

SL	129	68.6
ll	158	66.7

γ 340' E of Chatsworth

SL	145	66.0
----	-----	------

350' E of Chatsworth

SL	167	65.8
ll	158	66.7
γ	119	70.6
ll	104	72.1
γ	84	70.1
ll	65	76.0
HA	50	77.5

360' E of Chatsworth

SL	170	65.5
ll	147	
γ	121	

390' E of Chatsworth

SL	135	69.3
----	-----	------

POSTED

8254

	410	E of	Chalmonet
SL			127 69.8
ll			109
7			88
ll			70 75.5
7			50
ll			28
n2			1.0 81.5

	430	E of	Chalmonet
n2			0.0 80.5
ll			58
7			1.8
ll			37
7			55 77.0
ll			76
SL			98 92.7

8254

Page 45

73

	506	E = W	sin of	Chalmonet (60')
SL				85 74.0
ll				72
7				63
ll				54 77.2
7				44
ll				32
n2				23 70.0

	W of	Chalmonet
n2		32
ll		39
7		48
ll		58
7		65
ll		76
SL		88

8254

W 1/4 of		baptistam	
SE		97	
NE		85	
S		76	
E		68	
W		56	
NE		45	
SE		39	

center of baptistam

NE	45	780
NE	50	
S	58	
E	70	755
S	85	
NE	90	
SE	104	721

8254

Page 4

74

E 1/4 of		baptistam	
SE		112	71.3
NE		104	
S		98	
E		90	73.5
W		72	
NE		60	
SE		52	79.3

E 1/4 of baptistam

NE	60	76.5
NE	68	
S	78	
E	94	731 POSTED
S	107	
NE	112	
SE	118	70.7

8254

E line of Capetown (69')

SL	1248	7006	BMSEA Capetown
th	117		
7	112		
h	106	71.9	
7	82		
h	81		
22	70	755	
7P	726	7722	1248 7006
	55' 2" 23" = 00		
22	61	71.1	
h	64		
7	65		
h	66	70.6	
7	67		
h	69		
SL	72	70.0	

7722

Page 11

50' E of Capetown

SL	123	64.9
h	122	
7	120	
h	122	650
7	123	
h	122	
22	120	652

75' E of Capetown

22	143	62.9
h	146	
7	151	
h	152	640
7	154	
h	162	
SL	166	62.6

5

7722

	100'	E of	Capistrano	
SR			142	63.0
U			132	
7			112	
1			100	67.2
7			87	
U			82	
22			79	69.3

	125'	E of	Capistrano	
22			22	75.0
U			34	
7			46	
1			50	72.2
7			68	
U			87	
SR			100	67.2

7722

R. 2

76

	150'	E of	Capistrano	
SR			98	67.4
U			74	
7			44	
1			21	75.1
7			110	
U			02	
22			00	77.2

	185'	E of	Capistrano	
22			702	77.4
U			01	
7			14	
1			25	74.1
7			40	
U			63	
SR			93	67.9

POSTED

7722

	200	E of	bohistans	
SL			100	67.2
U			78	
V			60	
W			46	72.6
X			34	
U			24	
NR			22	75.0

	250	E of	bohistans	
NR			82	69.0
U			90	
V			94	
W			103	66.9
X			110	
U			117	
SL			123	64.9

7722

Page 11

257' E of n } = ditch
280' E - S

SL		162	61.0
U		151	
V		145	
W		136	63.6
X		131	
U		116	
NR		109	66.6

	300	E of	bohistans	
NR			60	71.2
U			76	
V			95	
W			108	66.4
X			119	
U			129	
SL			139	63.3

7288

350 E 7 *baptistiana*

SL		135	63.7
HL		126	
"		119	
L		110	66.2
"		97	
HL		82	
HL		70	70.2

400 E 7 *baptistiana*

HL		45	72.7
HL		54	
"		65	
L		78	69.4
"		83	
HL		97	
SL		117	65.8

TP 650 7288 1084 66.38

7288

Pa 4

450 E 4 *baptistiana*

SL		77	65.2
HL		63	
"		47	
L		37	69.2
"		28	
HL		16	
HL		07	72.2

500 E 7 *baptistiana*

HL		52	67.7
HL		60	
"		67	
L		76	65.3
"		85	
HL		92	
SL		93	63.6

73

7288

550 E of Copistham

SL	112	59.7
HL	140	
"	133	
L	123	60.6
"	112	
HL	103	
HL	95	63.4

575' E of Copistham

HL	79	65.0
HL	87	
"	96	
L	107	62.2
"	113	
HL	123	
SL	138	59.1

7288

Page 42

79

600 E of Copistham

SL	139	59.0
HL	126	
"	112	
L	97	63.2
"	85	
HL	79	
HL	76	65.3

650 E of Copistham

HL	47	68.2
HL	68	
"	78	
L	86	64.3
"	95	
HL	108	
SL	130	59.9

DUSTED

7258

	700	£ 8	Bepstham	
52			116	61.3
4			85	
7			50	
6			34	69.5
4			15	
11			04	
22			00	<u>729</u>

70	180	<u>768</u>	300	6988
----	-----	------------	-----	------

	750	£ 8	Bepstham	
22			270	70.12
11			45	
7			63	
6			80	649
7			93	
11			109	
52			127	60.5

Continued in Book 426

538
109
590
642

Published by H. S. CROCKER COMPANY, Stationers, Drawing Materials, Mathematical Instruments, etc., San Francisco.

TRAVERSE TABLE FOR TRANSIT BOOK.
From 1° to 90° for a distance of 100.

Degrees.	DEGREES.		¼ DEGREE.		½ DEGREE.		¾ DEGREE.		Degrees.
	Lat.	Dep.	Lat.	Dep.	Lat.	Dep.	Lat.	Dep.	
0			100.00	0.44	100.00	0.87	99.99	1.31	89
1	99.98	1.75	99.98	2.18	99.97	2.62	99.95	3.05	88
2	99.94	3.49	99.92	3.93	99.91	4.36	99.88	4.80	87
3	99.86	5.23	99.84	5.67	99.81	6.10	99.79	6.54	86
4	99.76	6.98	99.73	7.41	99.69	7.85	99.66	8.28	85
5	99.62	8.72	99.58	9.15	99.54	9.58	99.50	10.02	84
6	99.45	10.45	99.41	10.89	99.36	11.32	99.31	11.75	83
7	99.25	12.19	99.20	12.62	99.14	13.05	99.09	13.49	82
8	99.03	13.92	98.97	14.35	98.90	14.78	98.84	15.21	81
9	98.77	15.64	98.70	16.07	98.63	16.50	98.56	16.93	80
10	98.48	17.36	98.40	17.79	98.33	18.22	98.25	18.65	79
11	98.16	19.08	98.08	19.51	97.99	19.94	97.90	20.36	78
12	97.81	20.79	97.72	21.22	97.63	21.64	97.53	22.07	77
13	97.44	22.50	97.34	22.92	97.24	23.34	97.13	23.77	76
14	97.03	24.19	96.92	24.62	96.81	25.04	96.70	25.46	75
15	96.59	25.88	96.48	26.30	96.36	26.72	96.25	27.14	74
16	96.13	27.56	96.00	27.98	95.88	28.40	95.76	28.82	73
17	95.63	29.24	95.50	29.65	95.37	30.07	95.24	30.49	72
18	95.11	30.90	94.97	31.32	94.83	31.73	94.69	32.14	71
19	94.55	32.56	94.41	32.97	94.26	33.38	94.12	33.79	70
20	93.97	34.20	93.82	34.61	93.67	35.02	93.51	35.43	69
21	93.36	35.84	93.20	36.24	93.04	36.65	92.88	37.06	68
22	92.72	37.46	92.55	37.86	92.39	38.27	92.22	38.67	67
23	92.05	39.07	91.88	39.47	91.71	39.87	91.53	40.27	66
24	91.35	40.67	91.18	41.07	91.00	41.47	90.81	41.87	65
25	90.63	42.26	90.45	42.66	90.26	43.05	90.07	43.44	64
26	89.88	43.84	89.69	44.23	89.49	44.62	89.30	45.01	63
27	89.10	45.40	88.90	45.79	88.70	46.17	88.50	46.56	62
28	88.29	46.95	88.09	47.33	87.88	47.72	87.67	48.10	61
29	87.46	48.48	87.25	48.86	87.04	49.24	86.82	49.62	60
30	86.60	50.00	86.38	50.38	86.16	50.75	85.94	51.13	59
31	85.72	51.50	85.49	51.88	85.26	52.25	85.04	52.62	58
32	84.80	52.99	84.57	53.36	84.34	53.73	84.10	54.10	57
33	83.87	54.46	83.63	54.83	83.39	55.19	83.15	55.56	56
34	82.90	55.92	82.66	56.28	82.41	56.64	82.16	57.00	55
35	81.92	57.36	81.66	57.71	81.41	58.07	81.16	58.42	54
36	80.90	58.78	80.64	59.13	80.39	59.48	80.13	59.83	53
37	79.86	60.18	79.60	60.53	79.34	60.88	79.07	61.22	52
38	78.80	61.57	78.53	61.91	78.26	62.25	77.99	62.59	51
39	77.71	62.93	77.44	63.27	77.16	63.61	76.88	63.94	50
40	76.60	64.28	76.32	64.61	76.04	64.94	75.76	65.28	49
41	75.47	65.61	75.18	65.93	74.90	66.26	74.61	66.59	48
42	74.31	66.91	74.02	67.24	73.73	67.56	73.43	67.88	47
43	73.14	68.20	72.84	68.52	72.54	68.84	72.24	69.15	46
44	71.93	69.47	71.63	69.78	71.33	70.09	71.02	70.40	45
45	70.71	70.71							
Degrees.	Dep.	Lat.	Dep.	Lat.	Dep.	Lat.	Dep.	Lat.	Degrees.
Degrees.	DEGREES.		¼ DEGREE.		½ DEGREE.		¾ DEGREE.		Degrees.

8
8
8