

484

*Return to City Engineers Office
City Hall, San Diego, Cal.*

400

LEVEL

F.B. 484

*Return to City Engineers Office
City Hall, San Diego, Cal.*

Published by H. S. CROCKER COMPANY, Stationers, Drawing Materials, and Mathematical Instruments, San Francisco.

Table showing the difference of latitude and departure in running 80 chains at any course from 1 to 60 minutes.

MINUTES.	LKS.	MINUTES.	LKS.	MINUTES.	LKS.
1	2½	21	49	41	95½
2	4½	22	51½	42	98
3	7	23	53½	43	100½
4	9½	24	56	44	102½
5	11½	25	58½	45	105
6	14	26	60½	46	107½
7	16½	27	63	47	109½
8	18½	28	65½	48	112
9	21	29	67½	49	114½
10	23	30	70	50	116½
11	25½	31	72½	51	119
12	28	32	74½	52	121½
13	30½	33	77	53	123½
14	32½	34	79½	54	126
15	34½	35	81½	55	128½
16	37	36	84	56	130½
17	39½	37	86½	57	133
18	42	38	88½	58	135½
19	44½	39	91	59	137½
20	46½	40	93½	60	140

TABLE FOR RUNNING ON SLOPES.

In the following table the first column shows the angle, the second the number of links to be added to a chain on the slopes, to make one chain, horizontal measurement.

ANGLE	COR. IN LINKS	ANGLE	COR. IN LINKS	ANGLE	COR. IN LINKS	ANGLE	COR. IN LINKS
°		°		°		°	
4	0.24	11	1.88	18	5.14	25	10.54
5	0.38	12	2.24	19	5.76	26	11.26
6	0.55	13	2.63	20	6.42	27	12.24
7	0.76	14	3.06	21	7.11	28	13.37
8	0.98	15	3.53	22	7.85	29	14.34
9	1.24	16	4.02	23	8.64	30	15.47
10	1.55	17	4.56	24	9.47	35	22.07

Crocker Quality

LEVEL BOOK

No. 400



MANUFACTURED BY

A.S. Crocker & Co.

SAN FRANCISCO
and
SACRAMENTO

LEVEL BOOK

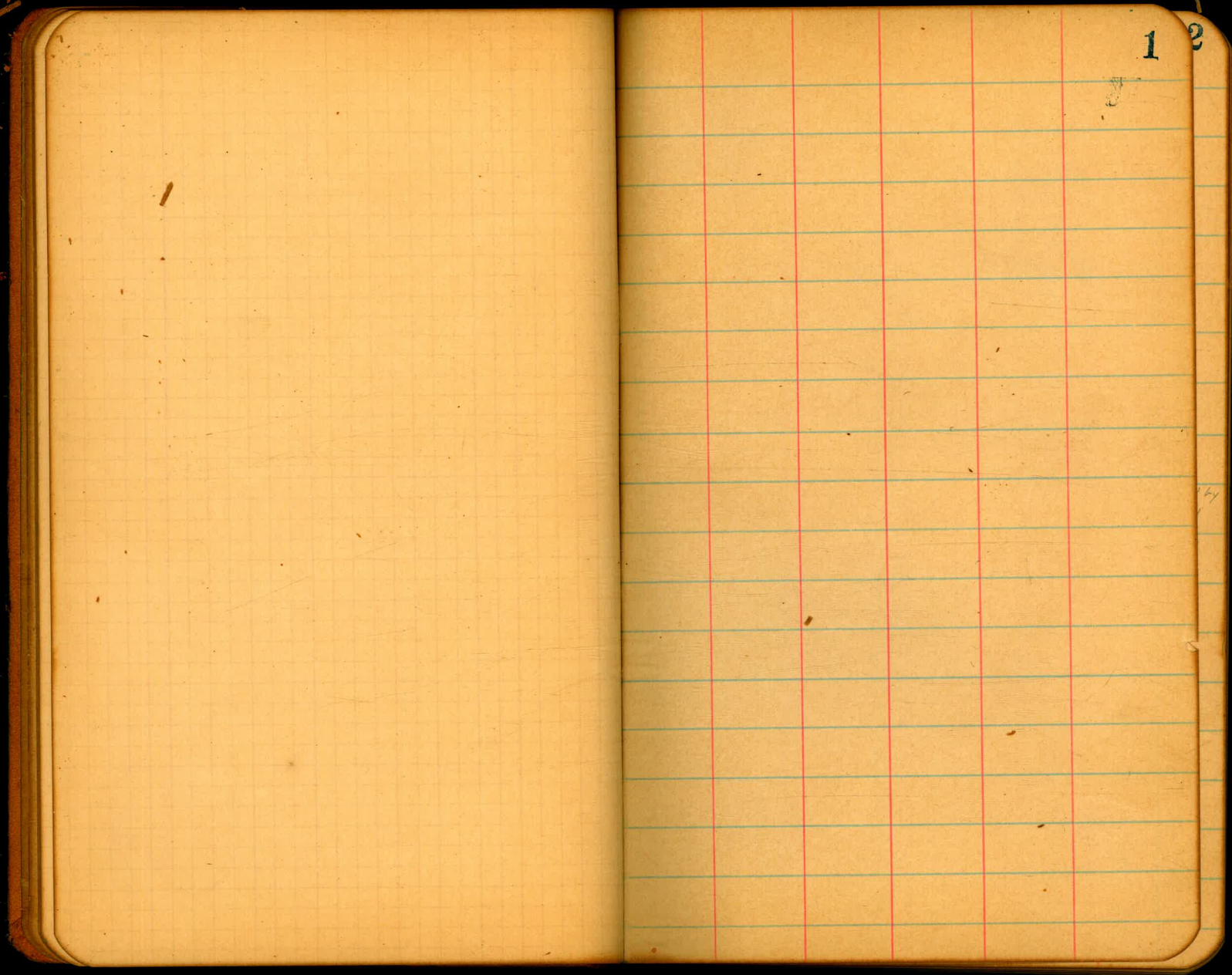
No. 400



MANUFACTURED BY
W. B. BAKER & CO.
SAN FRANCISCO
CALIFORNIA

INDEX

	Page	
Levels Penna Ave		2
x-section 15 th St	"	4
x- " Grim Ave	"	8
x- " Hunter St	"	31



Levels on Penna. Ave from alley bet 6th & 7th st Dunsche
 to alley bet 7th & 8th st, Penn 60' wide 9/8 Shaw
 B.M. brass eq Penn 24th st 28686 109 Royal

B.M. 2.89 289.70

Fl. Alley bet 6th & 7th

N 6.1 283.6

ctr Posted 6.2 283.5

S 6.2 283.5

0+25

S 6.8 282.7

ctr 6.9 282.8

N 6.9 282.8

0+50

N 7.6 282.1

ctr 7.6 282.1

S 7.5 282.2

0+75

S 8.0 281.7

ctr 8.2 281.5

N 8.3 281.4

2

1+0

N 9.0 280.7

ctr 8.7 281.0

S 8.7 281.0

1+40 = W.L. 7th st

S 10.1 279.6

ctr 9.9 279.8

N 9.9 279.8

0+5 E of W.L. 7th st

N 10.7 279.0

grade desired by
Ernest Pfall

center 7th st, 66' wide

N 12.3 277.4

ctr 11.4 278.3

S 11.9 277.8

T.P. 162 277.22 1240 277.60

27922

E.L. 7th St

S	2.9	276.3
ctr	2.5	276.4
N	2.9	276.3

0+25 E

N	4.5	274.7
ctr	4.0	275.2
S	4.2	275.0

0+50

S	4.9	274.3
ctr	5.4	273.8
N	5.4	273.8

0+75

N	6.2	273.0
ctr	6.4	272.8
S	6.5	272.7

1+0

3

S	7.2	272.0
ctr	7.3	271.9
N	7.0	272.2

1+25 = W.L. Alley bet. 7th & 8th St

N	7.7	271.5
ctr	8.8	270.4
S	9.7	269.5

Section 15th St J to H St

15th St 80' wide.

E. W. Massing cor 15th & J

E. W.

2.18

24.14

5.1 "J" St

W

3.0

21.1

cut

3.5

20.3

"

Roled

3.8

20.3

"

3.6

20.5

"

3.4

20.7

cut

3.1

21.0

E

2.8

21.3

0+25.5

E

2.8

21.3

cut

3.2

20.9

"

3.5

20.6

M

3.8

20.3

"

4.5

19.6

cut

5.0

19.1

W

4.8

19.3

7 Dunkles
109 Shaw

21.26

Regel

0+50

W

6.2

17.9

cut

6.2

17.9

"

5.5

18.6

M

4.1

20.0

"

3.5

20.6

cut

3.1

21.0

E

2.6

21.5

0+75

E

2.6

21.5

cut

2.8

21.3

"

3.3

20.8

M

3.6

20.5

"

4.6

19.5

cut

5.8

18.3

W

6.5

17.6

24.19

170

W	6.7	17.4
erb	6.2	17.9
"A	4.5	19.3
"A	3.3	20.8
"A	3.0	21.1
erb	2.6	21.5
F	2.2	21.9

1725

F	1.5	22.3
erb	2.6	21.5
"A	2.9	21.2
"A	3.3	20.8
"A	4.9	19.2
erb	5.5	18.6
W	7.0	17.1

5

1750

W	7.1	17.0
erb	7.0	17.1
"A	5.0	19.1
"A	3.8	20.3
"A	3.2	20.9
erb	2.6	21.5
F	2.0	22.1

1775

F	2.4	21.7
erb	3.1	21.0
"A	3.9	20.2
"A	4.2	19.9
"A	6.9	17.2
erb	7.6	16.5
W	7.1	17.0

2414

240

W	2.5	16.6
cb	2.7	16.4
"A	2.4	16.7
M	5.3	18.8
"A	5.0	19.1
cb	3.8	20.3
F	3.3	20.8

2425

F	4.1	20.0
cb	4.5	19.6
"A	5.5	18.6
M	5.8	18.3
"A	7.7	16.4
cb	7.8	16.3
W	7.4	16.7

6

2450

W	7.3	16.8
cb	7.6	16.5
"A	7.5	16.6
M	6.7	17.4
"A	5.9	18.2
cb	5.2	18.9
F	5.0	19.1

2475

F	5.8	18.3
cb	6.1	18.0
"A	6.3	17.8
M	7.3	16.8
"A	7.8	16.3
cb	7.9	16.2
W	7.5	16.6

241A

310- R.L. K. ST

W	7.4	16.7
cb	7.7	16.4
11	7.6	16.5
M	6.9	17.2
11	6.5	17.6
cb	6.3	17.8
E	6.1	18.0

Posted

7

section Grim Ave Dwight to Redwood. 7 1/2 Dunkle
 Grim Ave 65' wide. 109 Shaw
 B.V. Con. Man S.E. cor 30th & Capps, 336.76 Dwight

339.29

8

B.M. 3.32 340.08

T.P. 5.44 339.29 6.23 333.25

S. L. Dwight

W 4.8 334.5

cut 4.8 334.5

" 5.2 334.3

" 4.7 334.6

" 4.6 334.7

cut 4.7 334.6

E 4.9 334.4

0+25 S of Dwight

E 4.9 334.4

cut 4.7 334.6

" 4.7 334.6

" 4.8 334.5

" 5.1 334.2

cut 5.2 334.1

W 4.9 334.4

~~Posted~~

W 5.4 333.9

cut 5.5 333.8

" 5.4 333.9

" 5.3 334.0

" 5.2 334.1

cut 5.2 334.1

E 5.0 334.3

0+75

E 5.4 333.9

cut 5.6 333.7

" 5.5 333.8

" 5.4 333.9

" 5.7 333.6

cut 5.8 333.5

W 5.6 333.7

339.29

1+0

W 6.0 333.3

Crb 6.0 333.3

"4 5.7 333.6

M 6.0 333.3

"4 5.9 333.4

Crb 6.0 333.3

E 6.0 333.3

1+25

E 6.1 333.2

Crb 6.3 333.0

"4 6.0 333.3

M 5.2 334.1

"4 5.8 333.5

Crb 6.4 332.9

W 6.3 333.0

339.29

1+5-0

9

W 6.4 332.9

Crb 6.6 332.7

"4 6.5 332.8

M 6.2 333.1

"4 6.3 333.0

Crb 6.6 332.7

E 6.6 332.7

1+75

E 6.7 332.6

Crb 6.7 332.6

"4 6.8 332.5

M 6.5 332.8

"4 6.8 332.5

Crb 6.9 332.4

W 6.9 332.4

33929

2+0

W	6.1	333.2
Crk	6.6	332.7
"	6.9	332.4
M	6.9	332.4
"	7.0	332.3
Crk	7.1	332.2
F	6.9	332.4

2+25

F	7.1	332.2
Crk	7.4	331.9
"	7.3	332.0
M	7.4	331.9
"	7.1	332.2
Crk	6.9	332.4
W	6.4	332.9

33929

2+50

W	7.6	331.7
Crk	7.5	331.7
"	7.4	331.8
M	7.4	331.9
"	7.4	331.8
Crk	7.4	331.8
F	7.1	332.2

2+75

F	7.5	331.6
Crk	7.4	331.8
"	7.3	331.9
M	7.6	331.7
"	7.3	331.9
Crk	7.2	332.0
W	7.6	331.7

339.79

3+0

W	7.9	331.4
erb	7.3	332.0
"4	7.9	331.4
M	7.6	331.7
"4	7.6	331.7
erb	7.5	331.8
E	7.3	332.0

3+25

E	7.4	331.9
erb	7.5	331.8
"4	7.7	331.6
M	7.6	331.7
"4	7.8	331.5
erb	8.3	331.0
W	8.3	331.0

339.29

3+50

W	8.3	331.0
erb	8.2	331.1
"4	8.1	331.2
M	8.1	331.2
"4	7.9	331.4
erb	7.7	331.6
E	7.4	331.9

3+75

E	7.9	331.4
erb	7.9	331.4
"4	8.1	331.2
M	8.0	331.3
"4	8.1	331.2
erb	8.1	331.2
W	8.0	331.3

T.P.	4.62	335.57	8.34	330.95
------	------	--------	------	--------

11

334.57

4+0

W	5.5	330.1
erb	4.7	330.9
1/4	4.7	330.9
M	4.6	331.0
1/4	4.5	331.1
erb	4.5	331.1
E	4.3	331.3

4+25

E	4.6	331.0
erb	4.7	330.9
1/4	4.7	330.9
M	4.8	330.8
1/4	5.1	330.5
erb	5.0	330.3
W	5.5	330.1

335.57

4+50

W	5.2	329.8
erb	5.8	329.8
1/4	5.5	330.1
M	5.3	330.3
1/4	4.7	330.9
erb	4.9	330.7
E	4.7	330.9

4+75

E	4.7	330.9
erb	5.0	330.6
1/4	5.1	330.5
M	5.4	330.2
1/4	6.0	329.6
erb	6.3	329.3
W	6.7	328.9

12

335.57

570

W	7.3	328.3
erb	6.8	328.8
"A	6.8	328.8
M	6.2	328.4
"A	5.7	329.9
erb	5.5	330.1
E	57.0	330.6

5725

E	6.0	329.6
erb	6.9	329.2
"A	6.8	328.8
M	7.4	328.2
"A	7.7	327.9
erb	8.1	327.5
W	8.6	327.0

335.57

5750

13

W	9.5	326.1
erb	9.2	326.4
"A	8.6	327.0
M	8.1	327.5
"A	7.5	328.1
erb	7.1	328.5
E	6.7	328.9

5775

E	7.4	328.2
erb	8.2	327.4
"A	8.3	327.3
M	8.6	327.0
"A	9.1	326.5
erb	9.6	326.0
W	10.0	325.6

335.57

640 = N.L. Myrtle 60' wide

W	10.1	325.5
cb	10.2	325.4
"A	9.6	326.0
M	9.3	326.3
"A	9.0	326.6
cb	8.9	326.7
E	8.9	327.2

N curb

E	8.2	327.4
cb	8.8	326.8
"A	9.3	326.3
M	9.5	326.1
"A	9.9	325.7
cb	9.8	325.8
W	10.1	325.5

335.57

N "A

W	10.2	325.4
cb	9.8	325.8
"A	10.0	325.6
M	9.8	325.8
"A	9.5	326.1
cb	9.1	326.5
E	8.7	326.9

Center

E	8.7	326.9
cb	9.1	326.5
"A	9.7	325.9
M	9.9	325.7
"A	10.1	325.5
cb	10.2	325.4
W	10.1	325.5

14

335.57

S "A

W	10.6	325.0
erb	10.8	324.8
"A	10.2	325.4
M	9.9	325.7
"A	9.8	325.8
erb	9.3	326.3
F	9.0	326.6

S curb

F	9.1	326.5
erb	9.3	326.3
"A	9.5	326.1
M	9.6	326.0
"A	10.3	325.3
erb	11.0	324.6
W	11.1	324.5

335.57

S.L. Myrtle 5F

W	11.2	324.4
erb	10.5	325.1
"A	10.1	325.5
M	9.5	326.1
"A	9.4	326.2
erb	9.2	326.4
F	8.9	326.7

T.R. 3.59 329.16 10.00 325.57

0+25.5 of Myrtle

F	3.3	325.9
erb	3.4	325.8
"A	3.6	325.6
M	4.1	325.1
"A	4.5	324.7
erb	5.4	323.8
W	5.1	324.1

329.16

0+50

W	5.8	323.9
erb	5.6	323.6
"4	5.0	324.2
M	4.6	324.6
"4	4.2	325.0
erb	3.6	325.6
E	3.2	326.0

2+75

E	4.1	325.1
erb	4.5	324.7
"4	4.7	324.5
M	5.2	324.2
"4	5.0	324.2
erb	5.6	323.6
W	5.4	323.8

329.16

1+0

W	5.7	323.5
erb	5.7	323.5
"4	5.5	323.7
M	5.5	323.7
"4	5.4	323.8
erb	4.9	324.3
E	4.6	324.6

1+25

E	5.0	324.2
erb	5.3	323.9
"4	5.5	323.7
M	5.8	323.4
"4	5.7	323.3
erb	5.9	323.3
W	5.8	323.4

329.16

1450

W 6.1 323.1

erb 6.1 323.1

"A 6.3 322.9

M 6.0 323.2

"A 6.1 323.1

erb 6.0 323.2

F 5.6 323.6

1475

E 5.9 323.5

erb 6.2 323.0

"A 6.6 322.6

M 6.2 323.0

"A 6.8 322.4

erb 6.2 323.0

W 5.9 323.3

329.16

270

15

W 5.8 323.4

erb 6.4 322.8

"A 6.5 322.7

M 6.4 322.8

"A 6.8 322.4

erb 6.6 322.6

F 6.3 322.9

2725

F 6.6 322.6

erb 6.8 322.4

"A 6.9 322.3

M 6.4 322.8

"A 6.5 322.7

erb 6.1 323.1

W 5.6 323.6

15

329.16

2+50

W	5.6	323.6
Crk	6.0	323.2
1/4	6.5	322.7
M	6.5	322.7
1/4	7.1	322.1
Crk	7.1	322.1
E	7.0	322.2

2+75

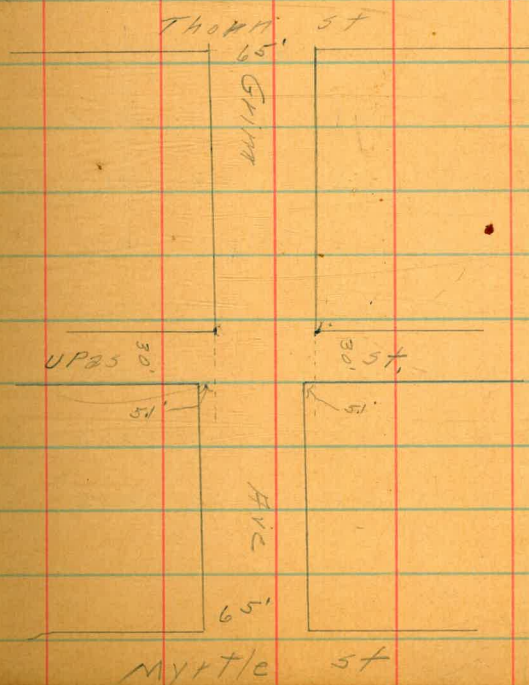
E	7.3	321.9
Crk	7.4	321.8
1/4	7.5	321.7
M	6.7	322.5
1/4	6.6	322.6
Crk	6.2	323.0
W	5.9	323.3

329.16

16

3+0 = N.L. UP25 ST 30' wide

W	6.1	323.1
Crk	6.1	323.1
1/4	5.9	323.3
M	6.4	322.8
1/4	7.0	322.2
Crk	7.5	321.7
E	7.6	321.6



329.16

Center UP25 st.

E	7.9	321.3
erb	7.8	321.4
"A	7.6	321.6
M	7.1	322.1
"A	6.7	322.5
erb	6.4	322.8
W	6.1	323.1

S.L. UP25 st

W	5.8	323.4
erb	6.4	322.8
"A	6.9	322.3
M	7.5	321.7
"A	7.5	321.7
erb	7.6	321.6
E	7.6	321.6

329.16

0+25' S. of UP25

17

E	8.4	320.8
erb	8.1	321.1
"A	7.9	321.3
M	7.6	321.6
"A	6.9	322.3
erb	6.7	323.0
W	5.6	323.6

0+50

W	5.3	323.9
erb	6.0	323.2
"A	6.8	322.4
M	7.5	321.7
"A	7.8	321.4
erb	7.9	321.3
E	8.4	320.8

329.16

0+75

E	8.7	320.5
erb	8.5	320.7
"A	8.1	321.1
M	7.2	322.0
"A	6.5	322.7
erb	5.9	323.3
W	5.3	323.9

170

W	5.2	324.0
erb	5.5	323.4
"A	6.3	322.9
M	7.1	322.1
"A	7.9	321.3
erb	8.6	320.6
E	9.3	319.9

329.16

1+25

18

E	7.9	321.3
erb	7.6	321.6
"A	6.9	322.3
M	6.3	322.9
"A	5.7	323.5
erb	5.5	323.7
W	5.1	324.1

1+50

W	5.1	324.1
erb	5.6	323.6
"A	6.1	323.1
M	6.7	322.5
"A	7.3	321.9
erb	7.6	321.6
E	8.1	321.1

81

329.16
1+75

E	8.3	320.9
erb	7.8	321.4
"A	6.9	322.3
M	6.5	322.7
"A	6.0	323.2
erb	5.5	323.7
N	4.6	324.6

2+0

N	4.7	324.5
erb	5.2	324.0
"A	5.8	323.4
M	6.0	323.2
"A	6.8	322.4
erb	7.7	321.5
E	8.1	321.1

329.16
2+25

E	8.1	321.1
erb	7.5	321.7
"A	6.8	322.4
M	6.1	323.1
"A	5.5	323.7
erb	4.9	324.3
N	4.2	325.0

2+50

N	4.4	324.8
erb	5.0	324.2
"A	5.5	323.7
M	6.0	323.2
"A	6.5	322.7
erb	7.3	321.9
E	8.2	321.0

T.P. 5.33 328.66 5.83 323.33

328.66

2+75

E	7.4	321.3
erb	6.7	322.0
"A	6.3	322.4
M	5.7	323.0
"A	5.2	323.5
erb	4.8	324.2
W	3.9	324.8

3+0

W	3.9	324.8
erb	4.2	324.5
"A	4.8	323.9
M	5.4	323.3
"A	6.2	322.5
erb	6.8	321.9
F	7.6	321.1

328.66

3+25

19

F	7.4	321.3
erb	6.6	322.1
"A	5.9	322.8
M	5.3	323.4
"A	4.6	324.1
erb	4.2	324.5
W	3.8	324.9

3+50

W	3.9	324.8
erb	4.0	324.7
"A	4.4	324.3
M	4.9	323.8
"A	5.6	323.1
erb	6.2	322.5
F	7.0	321.7

328.66

15

3175

F	6.6	322.1
Crk	5.9	322.8
"A	5.2	323.5
M	4.6	324.1
"A	4.2	324.5
Crk	4.0	324.7
W	4.0	324.7

4100

W	4.1	324.6
Crk	4.1	324.6
"A	4.1	324.6
M	4.3	324.4
"A	4.8	323.9
Crk	5.5	323.2
F	6.1	322.6

328.66

4125

20

F	6.0	322.7
Crk	5.0	323.7
"A	4.7	324.0
M	4.2	324.5
"A	4.2	324.5
Crk	4.2	324.5
W	4.0	324.7

4150

W	4.4	324.3
Crk	4.4	324.3
"A	4.4	324.3
M	4.5	324.2
"A	4.6	324.1
Crk	4.9	323.8
F	5.8	322.9

328.66

475

F	5.4	323.3
erb	5.0	323.7
1/4	4.5	324.2
M	4.3	324.9
1/4	4.3	324.4
erb	4.3	324.4
W	4.7	324.0

570

W	4.4	324.3
erb	4.5	324.2
1/4	4.4	324.3
M	4.5	324.2
1/4	4.5	324.2
erb	4.9	323.8
F	5.2	323.5

328.66

575

21

F	5.2	323.5
erb	4.8	323.9
1/4	4.8	323.9
M	4.7	324.0
1/4	4.6	324.1
erb	4.7	324.0
W	4.7	324.0

575

W	4.4	324.3
erb	4.5	324.2
1/4	4.7	324.0
M	4.9	323.8
1/4	4.7	324.0
erb	5.0	323.7
F	5.3	323.4

328.66

5+7.5

F	5.7	323.0
erb	5.4	323.3
"A	5.2	323.5
M	5.2	323.5
"A	4.9	323.8
erb	4.7	324.0
W	4.6	324.1

6+0 = N.L. Thorne st wide

W	5.0	323.7
erb	5.1	323.6
"A	5.2	323.5
M	5.4	323.3
"A	5.6	323.1
erb	5.7	323.0
F	6.0	322.7

328.66

N cork

22

F	6.2	322.5
erb	6.0	322.7
"A	5.9	322.8
M	5.7	323.0
"A	5.2	323.5
erb	5.0	323.7
W	5.1	323.6

N "A

W	5.3	323.4
erb	5.3	323.4
"A	5.4	323.3
M	5.8	322.9
"A	6.0	322.7
erb	6.1	322.6
F	6.2	322.5

328.66

Center

E	6.6	322.1
Crk	6.1	322.6
"4	5.8	322.9
M	5.6	323.1
"4	5.4	323.3
Crk	5.1	323.6
W	5.2	323.5

S "4

W	5.6	323.1
Crk	5.6	323.1
"4	5.6	323.1
M	5.7	323.0
"4	5.7	323.0
Crk	6.1	322.6
E	6.5	322.2

328.66

S Crk

E	6.5	322.2
Crk	6.2	322.5
"4	5.8	322.9
M	5.6	323.1
"4	5.7	323.0
Crk	5.7	323.0
W	5.8	322.9

S. L. Thompson St

W	6.2	322.7
Crk	5.8	322.9
"4	5.8	322.9
M	5.6	323.1
"4	5.4	323.3
Crk	6.0	322.7
E	6.5	322.2

328.66

0+25' 5 of Thom

E	6.6	322.1
crk	6.2	322.5
"A	6.1	322.6
M	6.1	322.6
"A	6.1	322.6
crk	6.3	322.4
W	6.5	322.2

0+50

W	7.0	321.7
crk	6.7	322.0
"A	6.6	322.1
M	6.5	322.2
"A	6.3	322.4
crk	6.6	322.1
E	6.8	321.9

328.66

0+75

24

E	6.9	321.8
crk	6.9	321.8
"A	6.8	321.9
M	6.7	322.0
"A	6.6	322.1
crk	7.1	321.6
W	7.4	321.3

1+0

W	7.4	321.3
crk	7.3	321.4
"A	6.7	322.0
M	7.0	321.7
"A	7.0	321.7
crk	7.0	321.7
E	7.1	321.6

328.66

1+25

E	7.5	321.2
Crk	7.5	321.2
"A	7.3	321.4
M	7.4	321.3
"A	7.8	320.9
Crk	8.0	320.7
W	7.9	320.8

1+50

W	8.5	320.2
Crk	8.0	320.7
"A	8.2	320.5
M	8.0	320.7
"A	7.6	321.1
Crk	7.7	321.0
E	7.8	320.9

328.66

1+75

25

E	8.1	320.6
Crk	8.1	320.6
"A	8.0	320.7
M	8.4	320.3
"A	8.4	320.3
Crk	8.4	320.3
W	8.5	320.2

2+0

W	8.7	320.0
Crk	8.7	320.0
"A	8.7	320.0
M	8.7	320.0
"A	8.3	320.4
Crk	8.2	320.5
E	8.4	320.3

328.66

2+25

F	8.5	320.2
erb	8.5	320.2
"A	8.7	320.0
M	9.0	319.7
"A	9.1	319.6
erb	9.1	319.6
W	9.1	319.6

2+50

W	9.6	319.1
erb	9.5	319.2
"A	9.3	319.4
M	9.3	319.4
"A	9.1	319.6
erb	9.0	319.7
F	8.9	319.8
T.P.	1.99	321.05
	9.10	319.56

321.05

2+75

26

F	1.6	319.4
erb	1.5	319.5
"A	1.8	319.2
M	1.9	319.1
"A	2.0	319.0
erb	2.2	318.8
W	2.4	318.6

3+0

W	2.5	318.5
erb	2.4	318.6
"A	2.4	318.6
M	2.4	318.6
"A	2.3	318.7
erb	2.1	318.9
F	2.1	318.9

321.05

3+25

E	2.5	318.5
erb	2.6	318.4
"A	2.6	318.4
M	2.8	318.2
"A	2.8	318.2
erb	2.9	318.1
W	3.0	318.0

3+50

W	3.4	317.6
erb	3.2	317.8
"A	3.4	317.6
M	3.1	317.9
"A	2.7	318.3
erb	2.6	318.4
E	2.9	318.1

321.05

3+75

E	3.2	317.8
erb	2.7	318.1
"A	3.1	317.9
M	3.3	317.7
"A	3.4	317.6
erb	3.6	317.4
W	3.8	317.2

4+0

W	4.2	316.8
erb	4.0	317.0
"A	3.9	317.1
M	3.9	317.1
"A	3.6	317.4
erb	3.6	317.4
E	3.5	317.5

32105

4+25

E	4.1	316.9
Crk	4.0	317.0
"A	4.0	317.0
W	4.2	316.8
"A	4.2	316.8
Crk	4.5	316.5
W	4.5	316.5

4+50

W	4.8	316.2
Crk	4.9	316.1
"A	4.6	316.4
M	4.6	316.4
"A	4.3	316.7
Crk	4.1	316.9
E	4.0	317.0

32105

4+75

28

E	4.6	316.4
Crk	4.7	316.3
"A	4.6	316.4
M	4.9	316.1
"A	5.1	315.9
Crk	5.2	315.8
W	5.4	315.6

5+0

W	5.8	315.2
Crk	5.6	315.4
"A	5.4	315.6
M	5.2	315.8
"A	5.4	315.6
Crk	5.0	316.0
E	5.0	316.0

321.05

5+25

E	5.6	315.4
crk	5.9	315.1
"A	5.8	315.2
M	6.1	314.9
"A	6.2	314.8
crk	6.3	314.7
W	6.5	314.5

5+50

W	7.1	313.9
crk	7.1	313.9
"A	7.1	313.9
M	6.6	314.4
"A	6.6	314.4
crk	6.4	314.6
E	6.2	314.8

321.05

5+75

29

E	7.0	314.0
crk	7.3	313.7
"A	7.3	313.7
M	7.5	313.5
"A	7.5	313.5
crk	8.0	313.0
W	8.1	312.9

6+0 = N. L. Redwood St

W	9.2	311.8
crk	9.1	<u>311.8</u>
"A	8.8	312.2
M	9.0	312.0
"A	8.8	312.2
crk	8.9	312.6
E	8.1	312.9

29

30

section Hunter St Jackdaw to Hawk

2/29, Skunk
/09 Show
Regis

B.M. 48.30K S.M. Lewis & Jackdaw

273.72

276.71

0+50

B.M. 5.89 279.71
T.P. 9.23 276.71 7.23 272.85

E. L. Jackdaw

S 8.0 268.7
Crb 8.1 268.6
" 8.5 268.2
N 8.7 266.0
" 9.7 267.0
Crb 10.0 266.7
N 10.7 266.0

Pasted

0+25 E of Jackdaw

N 10.2 265.9
Crb 10.2 266.5
" 10.1 266.6
N 9.6 267.1
" 9.3 267.4
Crb 8.9 267.8
S 8.5 268.2

S 8.1 268.0
Crb 8.5 268.2
" 9.1 267.6
N 9.3 267.4
" 9.7 267.0
Crb 10.1 266.6
N 10.6 266.1

0+75

N 9.6 267.1
Crb 9.1 267.6
" 8.6 268.1
N 8.3 268.4
" 8.1 268.6
Crb 7.9 268.8
S 7.4 269.3

276.71

140

S	6.4	270.3
cb	6.9	269.8
"A	7.1	269.6
N	7.4	269.3
"A	7.6	269.1
cb	7.7	269.0
N	8.4	268.3

1725

N	8.0	268.7
cb	7.2	269.5
"A	7.0	269.7
N	6.7	270.0
"A	6.5	270.2
cb	6.2	270.5
S	5.7	271.0

276.71

1450

32

S	5.5	271.2
cb	5.6	271.1
"A	6.1	270.6
N	6.3	270.4
"A	6.7	270.0
cb	7.1	269.6
N	7.6	269.1

1775

N	7.3	269.4
cb	6.9	269.8
"A	6.6	270.1
N	6.4	270.3
"A	5.9	270.8
cb	5.8	270.9
S	5.5	271.2

32

276.71

2+13^{1/2} = m.l. Ibis st 80' wide

S	5.2	271.5
cbh	5.2	271.5
1/4	5.2	271.5
M	5.3	271.4
1/4	5.6	271.1
cbh	6.2	270.5
N	6.6	270.1
W curb		
W	5.8	270.9
cbh	5.5	271.4
1/4	5.0	271.7
M	5.0	271.7
1/4	5.0	271.7
cbh	4.9	271.8
S	4.9	271.8

276.71

W 1/4

33

S	4.5	272.2
cbh	4.5	272.2
1/4	4.5	272.2
M	4.4	272.3
1/4	4.5	272.2
cbh	4.9	271.8
N	4.7	272.0
Center		
W	4.1	272.6
cbh	4.1	272.6
1/4	4.3	272.4
M	4.2	272.5
1/4	4.1	272.6
cbh	4.1	272.6
S	4.4	272.3

33

276.71

E 14

S	4.2	272.5
crk	4.3	272.4
14	4.3	272.4
M	4.5	272.2
14	4.5	272.2
crk	4.2	272.5
N	4.4	272.3

E. CRK

N	4.4	272.3
crk	4.1	272.6
14	4.2	272.5
M	4.4	272.3
14	4.5	272.2
crk	4.5	272.2
S	4.2	272.5

276.71

E. L. Ibis St

34

S	4.0	272.7
crk	3.9	272.8
14	3.9	272.8
M	3.8	272.9
14	3.8	272.9
crk	3.6	273.1
N	3.7	273.0

0+25 E of Ibis

N	3.7	273.0
crk	3.7	273.0
14	3.6	273.1
M	3.5	273.2
14	3.6	273.1
crk	3.7	273.0
S	4.0	272.7

276.71

0+50

S	4.2	272.5
crk	4.0	272.7
1/4	3.8	272.9
M	3.5	273.2
1/4	3.7	273.0
crk	3.9	272.8
N	3.6	273.1

0+75

N	4.5	272.2
crk	4.3	272.4
1/4	4.3	272.4
M	4.3	272.4
1/4	4.2	272.5
crk	4.5	272.2
S	4.7	272.0

276.71

1+0

S	5.5	271.2
crk	5.0	271.7
1/4	4.7	272.0
M	4.5	272.2
1/4	4.5	272.2
crk	4.9	271.8
N	5.0	271.7

1+25

N	5.4	271.3
crk	5.2	271.5
1/4	5.2	271.5
M	5.3	271.4
1/4	5.6	271.1
crk	6.0	270.6
S	6.4	270.3

276.71

1450

S	2.0	269.7
crk	6.4	270.3
1/4	6.1	270.6
N	5.8	270.9
1/4	5.4	271.3
crk	5.4	271.3
N	5.7	271.0

1475

N	6.5	270.2
crk	6.4	270.3
1/4	6.7	270.0
N	6.8	269.9
1/4	7.4	269.3
crk	7.9	268.8
S	8.2	268.5

276.71

210 = W.L. Hawk ST

36

S	8.9	269.8
crk	8.5	268.2
1/4	8.2	268.5
N	8.1	268.6
1/4	7.9	268.8
crk	7.7	269.0
N	7.6	269.1

Posted

37

x-section 3rd of Spruce to Redwood

11.80' wide

B.M. 6.21 279.09

S.L. SPRUCE

E	2.9	276.2
erb	3.1	276.0
+1	3.9	275.2
"	3.6	275.5
M	3.3	275.8
"	3.5	275.6
+12	3.9	275.2
erb	3.1	276.0
W	2.9	276.2

0+25' S. of SPRUCE

W	3.4	275.7
erb	3.5	275.6
+1	4.3	274.8
"	4.1	275.0
M	3.6	275.5
"	4.0	275.1
+12	4.8	274.3
erb	3.7	275.4
E	3.6	275.5

4.99 DuncKh
1.09 Shaw
Deyiel

272.22

0+50

-3	6.6	272.5
E	4.0	275.1
erb	4.2	274.9
+1	5.1	274.0
"	4.5	274.6
M	4.1	275.0
"	4.3	274.8
+12	4.8	274.3
erb	3.8	275.3
W	3.6	275.5

0+75

W	4.0	275.1
erb	4.4	274.7
+1	5.5	273.6
"	4.8	274.3
M	4.6	274.5
"	5.0	274.1
+12	5.9	273.7
erb	4.5	274.6
E	4.1	275.0
+5	6.8	272.3
+10	7.2	271.9

750 Nelsons Slope

279.09

	1+0		
- 10		8.0	271.1
- 9	Too Nelsons slope ✓	7.5	271.6
E		5.0	274.1
erb		6.0	273.1
1/4		5.3	273.8
M		5.0	274.1
1/4		5.2	273.9
+ 12		5.8	273.3
erb		4.5	274.6
W		4.3	274.8
	1+25		
W		4.6	274.5
erb		4.9	274.2
+ 1		5.9	273.2
1/4		5.4	273.7
M		5.4	273.7
1/4		5.8	273.3
+ 12		6.6	272.5
erb		5.6	273.5
E		5.1	274.0
+ 5	Too Nelsons slope ✓	8.4	270.7
+ 10		8.5	270.6

	1+50		
- 10		9.5	269.6
- 4	Too Nelsons slope ✓	9.1	270.0
E		6.0	273.1
erb		6.2	272.9
+ 1		7.0	272.1
1/4		6.4	272.7
M		5.7	273.4
1/4		5.8	273.3
+ 12		6.2	272.9
erb		5.1	274.0
W		4.9	274.2
	1+75		
W		5.2	273.9
erb		5.6	273.5
+ 1		6.7	272.4
1/4		6.2	272.9
M		6.2	272.9
1/4		7.0	272.1
+ 12		7.7	271.4
erb		6.7	272.4
E		6.6	272.5
+ 5	Too Nelsons slope ✓	10.2	268.9
+ 10		11.1	268.0

279.09

2+0

- 45		33.1	246.0
- 70	Top Nelsons slope V	21.9	257.2
- 3		9.6	268.5
E		8.9	270.2
+ 3		6.9	272.2
crk		7.2	271.9
+ 2		8.1	271.0
"		7.3	271.8
M		6.7	272.4
"		6.7	272.4
+ 12		6.7	272.4
crk		5.8	273.3
W		5.5	273.6
	2+25		
W		5.7	273.4
crk		6.2	272.9
+ 1		7.5	271.6
"		7.1	272.0
M		6.9	272.2
"		8.5	271.6
+ 12		8.2	270.9
crk		7.6	271.5
+ 8		7.2	271.9
E.L.		9.9	269.2
+ 29	Top Nelsons slope V	28.9	250.2
+ 72		57.1	222.0
+ 90		53.1	226.0

40

2+50

- 25		52.4	226.7
- 75		59.8	219.3
- 35	Top Nelsons slope V	33.0	246.1
- 3		11.7	267.4
E.L.		11.0	268.1
+ 3		10.8	268.3
+ 7		7.8	271.3
crk		8.3	270.8
+ 1		8.8	270.3
"		7.9	271.2
M		7.4	271.7
"		7.4	271.7
+ 12		7.4	271.7
crk		6.4	272.7
W		6.2	272.9
	2+75		
W		6.5	272.6
crk		6.9	272.2
+ 1		7.8	271.3
"		7.6	271.5
M		7.7	271.4
"		8.2	270.9
+ 12		8.9	270.2
crk		8.4	270.7
+ 6		7.8	271.3
E.L.		12.7	266.4
+ 4		13.3	265.8
+ 35	Top Nelsons slope V	36.4	242.7
+ 60		47.9	231.2
+ 80		61.4	217.7
+ 100		52.1	227.0

279.09

370

- 100	53.2	225.9
- 90	62.7	216.2
- 70	49.5	229.6
- 22 The Nelsons shore, ✓	32.0	247.1
- 5	17.9	261.2
E.L.	17.3	261.8
+ 2	15.2	263.9
+ 5	12.3	266.8
cb	10.3	268.8
"A	8.6	270.5
M	8.1	271.0
"A	7.9	271.2
cb	7.5	271.6
W.L.	6.9	272.2

41

Levels on Brantst Thorn to Redwood
 " 20' wide

¹⁰⁹/₁₀₉ Dimple
 Shaw
 Spirit

249.38

5-M Brass cly cor Thorn to First, 255.00

0+50

B.M. 0.57 255.57
 T.P. 0.58 243.16 12.99 242.58
 T.P. 2.72 249.38 1.50 241.66

W.L. 6.2 243.2
 +25 6.1 243.3

S.L. Thorn

+50 5.9 243.5

W.L. 4.8 244.6

+55 5.9 243.6

+25 4.3 245.1

F.L. 5.9 243.5

+50 4.7 244.7

0+75

+55 4.7 244.9

F.L. 5.7 243.8

E.L. 4.8 244.6

+25 6.5 242.9

0+25 S. of Thorn

+30 6.3 243.1

E.L. 5.2 244.2

+55 6.8 242.6

+25 5.0 244.4

W.L. 7.3 242.1

+30 5.0 244.4

1+0

+55 5.5 244.1

W.L. 7.7 241.7

W.L. 5.4 244.0

+25 7.5 241.9

+50 7.3 242.1

+55 7.3 242.1

E.L. 7.5 241.9

Posted

249.38

1+25

E.L.	8.4	241.0
+ 25	8.0	241.4
+ 30	8.0	241.4
+ 55	8.1	241.3
W.L.	8.1	241.3

1+50

W.L.	8.8	240.6
+ 25	9.1	240.3
+ 50	8.9	240.5
+ 55	8.8	240.6
E.L.	8.8	240.6

1+75

E.L.	9.4	240.0
+ 25	9.6	239.8
+ 30	9.6	239.8
+ 55	10.0	239.4
W.L.	9.3	240.1

249.38

2+0

W.L.	10.4	239.0
+ 25	11.1	238.3
+ 50	10.0	239.2
+ 55	10.2	239.2
E.L.	10.4	239.0

2+25

E.L.	12.4	237.0
+ 25	11.7	237.1
+ 30	11.7	237.7
+ 55	13.0	236.4
W.L.	11.9	237.5

T.P.	2.40	239.08	12.70	236.68
------	------	--------	-------	--------

2+50

W.L.	4.3	234.8
+ 25	5.0	234.1
+ 50	4.2	234.9
+ 55	4.6	234.5
E.L.	4.7	234.4

43

239.08

2475

E.L.	8.4	230.7
+25	7.4	234.7
+30	7.3	231.8
+55	7.7	231.4
W.L.	7.5	231.6

3+0 = N.L. Spruce st 8' wide

W.L.	11.6	227.5
+25	11.4	227.7
+50	13.5	226.3
+55	19.5	224.6
E.L.	18.0	221.1

T.P. 3.02 229.84 1216 226.92

Center Spruce

E.L.	29.9	200.0
+25	23.1	206.8
+30	21.5	208.4
+55	4.2	226.7
W.L.	4.7	225.2

229.94

5 1/4 Spruce

44

W.L.	7.9	225.0
+25	4.3	225.6
+50	25.0	204.9
+55	27.9	202.0
E.L.	38.3	191.6

5.4 Spruce

E.L.	30.3	199.6
+25	19.8	210.1
+30	18.4	211.5
+55	4.3	225.6
W.L.	3.8	226.1

0+25 S of Spruce

W.L.	1.8	224.1
+25	3.7	226.2
+50	7.1	222.8
+55	8.0	221.9
E.L.	14.9	215.0

229.94

0+50.5

E.L.		6.6	223.3
+25		2.2	227.9
+30		1.7	228.2
+55		0.8	229.1
W.L.		0.1	229.8
T.P.	3.73	232.78	0.89 229.05

0+75

W.L.		2.5	230.3
+25		3.2	229.6
+50		3.8	229.0
+55		4.3	228.5
E.L.		3.0	227.8

1+0

E.L.		2.7	224.1
+25		5.4	227.4
+30		4.9	227.9
+55		3.0	228.8
W.L.		2.1	230.9

232.78

1+20

45

W.L.		1.9	230.9
+25		3.9	228.9
+50		6.1	226.7
+55		6.7	226.1
E.L.		10.3	222.5

1+50

E.L.		14.3	218.5
+25		8.2	226.6
+30		7.6	225.2
+55		4.5	228.3
W.L.		2.9	229.9

1+75

W.L.		4.0	228.8
+25		4.0	228.8
+50		9.5	223.3
+55		10.8	222.0
E.L.		18.0	214.8

	232.78			
	240			
E.L.		23.9	208.9	
+25		13.1	219.7	
+30		12.4	220.4	
+55		7.7	225.1	
W.L.		4.7	228.1	
	2425			
W.L.		5.0	229.8	
+25		12.5	222.3	
+50		20.0	212.8	
+55		22.1	210.7	
E.L.		32.9	200.4	
	2450			
E.L.		39.1	193.7	
+25		25.7	207.1	
+30		23.1	209.1	
+55		12.1	220.7	
W.L.		4.4	228.4	
T.P.	0.49	210.79	12.48	220.30

	220.79				46
	2475				
W.L.			2.9	212.9	
+25			11.0	209.8	
T.P.	0.61	208.55	12.55	205.24	
+50			5.6	203.3	
+55			7.8	201.1	
E.L.			18.9	190.0	
					340 - W.L. Redwood - 80 wide
E.L.			25.0	183.9	
+25			17.6	191.3	
+30			16.2	192.9	
+55			13.2	195.1	
W.L.			10.3	198.6	
T.P.	0.65	196.58	12.92	185.93	
T.P.	0.40	184.44	12.54	184.04	

184.49
Center Redwood

W.L.	7.5	176.9
+ 25	7.7	176.7
+ 50	9.7	174.7
+ 55	10.1	174.3
E.L.	12.1	172.3

S.L. Redwood 5+

E.L.	33.2	151.4
+ 25	25.5	158.9
+ 30	25.9	158.5
+ 55	24.4	160.0
W.L.	16.8	167.6

48

Section Utah st. Adams to Copley
" 80 wide

B.M. P.P.S.P.K. Cor Adams & Utah

386.11

109
109

Dimple
Shaw
Dyke

393.68

0+50

49

B.M.

7.57 393.68

N.L. Adams

W

6.9 386.8

cb

7.5 286.2

"

7.5 286.2

N

7.3 286.4

"

7.8 285.9

cb

7.7 286.0

E.

6.8 286.9

0+25 N

E

7.4 286.3

cb

7.5 286.2

"

7.8 285.9

N

7.6 286.1

"

7.5 286.2

cb

7.4 286.3

W

6.8 286.9

W

7.0 386.7

cb

7.8 385.9

"

7.7 386.0

N

7.5 386.2

"

7.4 386.3

cb

7.1 386.6

E

6.9 386.8

0+75

E

6.5 387.2

cb

6.9 386.8

"

7.1 386.6

N

7.1 386.6

"

7.4 386.3

cb

7.6 386.1

W

7.0 386.7

Posted

393.68

170

W	6.9	386.8
Crk	6.8	386.9
"A	6.7	387.0
M	6.8	386.9
"A	6.7	387.0
Crk	6.6	387.1
E	6.2	387.5

1725

E	5.5	388.2
Crk	6.5	387.2
"A	6.4	387.3
M	6.6	387.1
"A	6.6	387.1
Crk	6.8	386.9
W	6.7	387.0

293.68

1750

W	6.6	387.1
Crk	6.6	387.1
"A	6.3	387.4
M	6.4	387.3
"A	6.0	387.7
Crk	6.2	387.5
E	5.6	388.1

1775

E	5.7	388.6
Crk	5.3	388.4
"A	5.4	388.3
M	5.7	388.0
"A	5.6	388.1
Crk	5.7	388.0
W	6.1	387.6

270

W	5.6	388.1
Crk	5.4	388.3
"A	5.3	388.4
M	5.2	388.5
"A	5.1	388.6
Crk	4.8	388.9
E	4.5	389.2

50

393.68

48

2+25

E	4.1	389.6
erb	4.1	389.6
1/4	4.2	389.5
M	4.5	389.2
1/4	4.8	388.9
erb	4.9	388.8
W	4.9	388.8

2+50

W	3.5	390.2
erb	3.6	390.1
1/4	4.4	389.3
M	3.9	389.3
1/4	4.1	389.6
erb	4.0	389.7
E	3.8	389.9

2+75

E	3.4	389.3
erb	3.8	389.9
1/4	4.2	389.5
M	3.6	390.1
1/4	4.5	389.2
erb	4.5	389.2
W	4.5	389.2

393.68

51

3+0

W	4.1	389.6
erb	3.5	390.2
+9	3.0	390.7
+10	4.2	389.5
1/4	4.1	389.6
M	3.5	390.2
1/4	4.0	389.7
+2	4.1	389.6
+3	3.8	389.9
erb	3.8	389.9

E	3.7	390.0
---	-----	-------

3+25

E	3.4	390.3
erb	3.2	390.5
1/4	3.7	390.0
M	3.5	390.2
1/4	4.0	389.7
+2	4.1	389.6
+3	3.7	390.0
erb	3.9	389.8
W	4.0	389.7

393.68

3+50

W		
erb	3.7	390.0
HA	3.6	390.1
M	3.9	389.8
14	3.1	390.6
+ 2	3.7	390.0
+ 3	4.0	389.7
erb	3.6	390.1
E	3.4	390.3
	3.4	390.3

3475

E	3.3	390.4
erb	2.4	391.3
+ 10	2.7	391.0
+ 11	3.7	390.0
14	3.5	390.2
M	2.7	391.0
14	3.6	390.1
+ 2	3.7	390.0
+ 3	2.6	391.1
erb	3.1	390.6
W	3.5	390.2

4+0

W	2.9	390.8
erb	3.2	390.5
+ 10	2.8	390.9
+ 11	3.5	390.2
14	3.3	390.4
M	2.6	391.1
14	3.3	391.4
+ 2	3.6	390.1
+ 3	3.2	390.5
erb	3.3	390.4
E	3.3	390.4

393.68

4+25

E	1.9	391.8
erb	2.8	390.9
+ 10	2.9	390.8
+ 11	3.3	390.4
14	3.0	390.7
M	2.4	391.3
14	3.3	390.4
+ 2	3.5	390.2
+ 3	3.0	390.7
erb	3.2	390.5
W	2.8	390.9

4+50

W	2.8	390.9
erb	3.0	390.7
+ 10	2.9	390.8
+ 11	3.3	390.4
14	3.1	390.6
M	2.3	391.4
14	2.8	390.9
+ 2	2.8	390.9
+ 4	1.3	392.4

erb	2.1	391.6
-----	-----	-------

E	2.6	391.1
---	-----	-------

T.P.	6.0	397.12	2.56	391.12
------	-----	--------	------	--------

52

397.12

4+75

E	5.5	391.6
cb	6.1	391.0
+10	6.1	391.0
+11	6.5	390.6
1/4	6.4	390.7

M	5.7	391.4
1/4	6.4	390.7
+2	6.6	390.5
+3	6.3	390.8
cb	6.2	390.7

W	6.2	390.9
---	-----	-------

5+0

W	5.6	391.5
cb	6.2	390.9
+10	6.1	391.0
+11	6.5	390.6
1/4	6.2	390.9

M	5.3	391.8
---	-----	-------

1/4	6.2	390.9
-----	-----	-------

+2	6.5	390.6
----	-----	-------

+3	6.0	391.1
----	-----	-------

cb	6.1	390.1
----	-----	-------

E	6.0	391.1
---	-----	-------

58

5+25

E	5.8	391.3
cb	5.4	
+10	5.5	
+11	6.1	
1/4	6.0	

M	5.3	391.8
1/4	6.2	
+2	6.2	
+3	5.4	
cb	5.7	

W	5.9	391.2
---	-----	-------

5+50

W	5.8	391.3
cb	5.5	
+10	5.4	
+11	6.1	
1/4	6.0	

M	5.1	392.0
---	-----	-------

1/4	6.1	
-----	-----	--

+2	6.3	
----	-----	--

+3	5.7	
----	-----	--

cb	5.7	
----	-----	--

E	5.8	391.3
---	-----	-------

397.12

5775

E	5.7	391.4
crk	5.6	
+10	5.6	
+11	6.0	
"	5.9	
M	5.0	392.1
"	6.0	
+2	6.1	
+3	5.9	
crk	5.9	
W	5.2	391.9

6+0 = 3.4 Collier Ave 80' wide

W	5.4	391.7
crk	5.3	
+10	5.2	
+11	5.9	
"	5.8	
M	4.8	392.0
"	5.9	
+2	6.0	
+3	5.4	
crk	5.5	
E	5.5	391.6

54

5.00PL

E	5.0
crk	5.4
+10	5.9
+11	5.8
"	5.7
M	5.0
"	5.9
+2	5.9
+3	5.4
crk	5.3
W	5.6

5.44

W	5.3
crk	5.4
"	5.5
M	5.3
"	5.3
crk	5.3
E	5.2

center

E	4.7	392.4
erb	4.7	
"A	4.8	
M	4.9	392.2
"A	4.8	
erb	4.8	
W	4.7	392.4
	N "A	
W	5.1	392.0
erb	5.1	
"A	5.2	
M	5.2	391.7
"A	5.4	
erb	5.4	
E	5.4	391.7

N curve

E	5.2
erb	5.1
+10	5.1
+11	5.5
"A	5.5
M	4.8
"A	5.3
erb	4.8
W	4.8

N.L. Collier Ave

W	4.6	392.5
erb	4.6	
"A	5.2	
M	4.6	392.5
"A	5.3	
+2	5.4	
+3	5.0	
erb	5.1	
E	5.1	392.0

397.12

0+75 N of Collier

E	4.5	392.6
erb	4.4	
+10	4.8	
+11	5.2	
1/4	5.1	

M	4.5	392.6
1/4	5.1	
+2	5.0	
+3	4.5	
erb	4.4	

W	4.4	392.7
---	-----	-------

0+50

W	4.3	392.8
erb	4.3	
+10	4.5	
+11	5.9	
1/4	5.8	
M	4.2	392.9

1/4	5.1	
-----	-----	--

+2	5.1	
----	-----	--

+3	4.6	
----	-----	--

erb	4.8	
-----	-----	--

E	4.6	392.5
---	-----	-------

56

0+75

E	4.6	392.5
erb	4.6	
+10	4.6	
+11	5.0	
1/4	5.0	

M	4.1	393.0
1/4	4.8	
+2	4.9	
+3	4.4	
erb	4.4	
W	4.5	392.6

1+0

W	4.3	392.8
erb	4.4	
+10	4.4	
+11	4.7	
1/4	4.7	

M	3.9	393.2
---	-----	-------

1/4	4.8	
-----	-----	--

+2	4.8	
----	-----	--

+3	4.4	
----	-----	--

erb	4.6	
-----	-----	--

E	4.6	392.5
---	-----	-------

397.12

1+25

E	4.0	393.1
erb	3.9	
+10	4.3	
+11	4.6	
11A	4.6	
M	3.9	393.2
11A	4.6	
+2	4.7	
+3	4.1	
erb	4.2	
W	4.2	392.9

1+50

W	4.0	393.1
erb	4.2	
+10	4.2	
+11	4.6	
11A	4.5	
M	3.8	393.3
11A	4.6	
+2	4.6	
+3	4.1	
erb	4.3	
E	4.3	392.8

1+75

57

E	4.2	392.9
erb	4.2	
+10	4.1	
+11	4.6	
11A	4.4	
M	3.7	393.4
11A	4.3	
+2	4.9	
+3	4.3	
erb	3.9	
W	3.8	393.3

2+0

W	4.0	393.1
erb	4.1	
+10	4.1	
+11	4.5	
11A	4.4	
M	3.8	393.3
11A	4.4	
+2	4.5	
+3	3.9	
erb	3.8	
E	4.0	393.1

28

39712

2+25

E	4.2	392.9
erb	3.9	
+10	4.2	
+11	4.6	
"4	4.5	
N	3.7	393.4
"4	4.5	
+2	4.5	
+3	3.9	
erb	4.0	
W	4.0	393.1

2+50

W	3.5	393 393.6
erb	3.8	
+10	4.0	
+11	4.5	
"4	4.4	
M	3.7	393.4
"4	4.5	
+2	4.7	
+3	4.2	
erb	4.3	
E	4.4	392.7

58

2+75

E	4.3	392.8
erb	4.3	
+10	4.2	
+11	4.7	
"4	4.6	
N	3.7	393.4
"4	4.5	
+2	4.6	
+3	4.2	
erb	4.0	
W	4.0	393.1

3+0 = S.L. Copley Ave

W	4.2	392.9
erb	4.3	
+1	4.4	
+2	5.0	
"4	4.4	
M	3.8	393.3
"4	4.5	
+10	5.1	
+11	4.7	
erb	4.6	
E	4.50	392.62

HOL NE. CVT
UT 18 Copley

48

59

Levels on Johnson Ave. w.l. University Heights
 add. To Lincoln Johnson 80' wide
 B.M. 88. 3011 s.m. Lincoln & Vermont, 292.06
 11 Dutch
 109 Shaw
 292.06
 292.06

296.92
 140

60

B.M. 6.45 298.51

S

5.9 291.0

T. P. 4.37 296.92 5.96 292.55

etc

5.7 291.2

w.l. University Heights add

N

6.9 290.0

S 7.0 289.9

1425

etc Postid 8.6 288.3

N

7.7 289.2

N 8.0 288.9

etc

6.3 290.6

0+25 E

S

5.6 291.3

N 7.2 289.7

1450

etc 6.7 290.2

S

5.7 291.2

S 8.0 288.9

etc

6.3 290.6

0+50 E

N

7.7 289.2

S 6.7 290.2

1475

etc 6.6 290.3

N

7.7 289.2

N 6.7 290.3

etc

6.1 290.8

S

5.6 291.3

0+75

N 6.4 290.5

Note cement sidewalk on s. side from sta 1465
 to 15 to 2+15

etc 6.3 290.6

3' x 6" end cement sidewalk 5.53

S 6.1 290.8

0+25 E. " " " 5.50

10

296.92

2+0

S	5.4	291.5
ctc	5.7	291.2
N	7.0	289.9

2+25

N	6.5	290.4
ctc	5.9	291.0
S	5.6	291.3

2+50

S	5.2	291.7
ctc	5.5	291.4
N	6.7	290.2

2+75

N	7.6	289.3
ctc	5.3	291.6
S	5.0	291.9

296.92

3+0

61

S	4.7	292.2
ctc	5.3	291.6
N	9.0	287.9

3+25

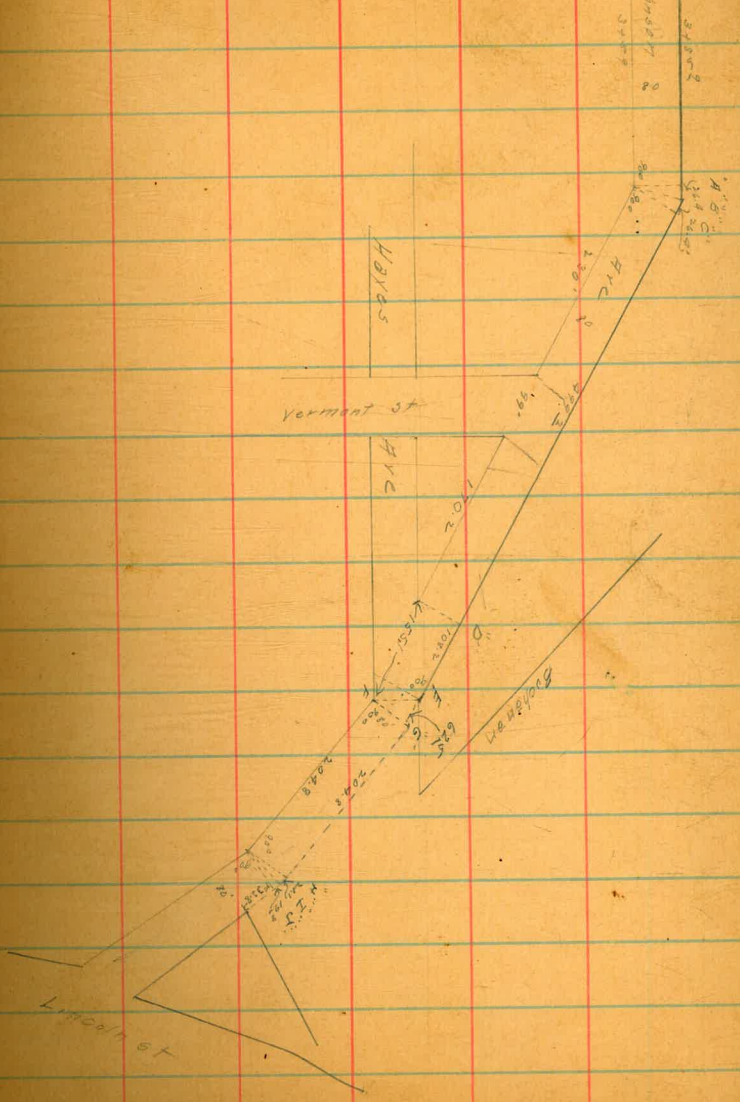
N	11.9	285.0
ctc	5.6	291.3
S	4.3	292.6

3+59 = X sec A sec Page 67

S	4.7	292.2
ctc	6.3	290.6
N	16.8	280.1

X sec "B"

N	23.9	273.0
ctc	8.7	289.2
S	4.7	292.2



276.92

1-500 C

S	4.7	292.2
etc	8.9	288.0
N	26.2	270.7

0+25 E of sec C

N	29.9	272.5
etc	7.9	289.0
S	4.2	292.7

0+50

S	4.0	292.9
etc	6.4	290.5
N	19.4	277.5

0+75

N	24.0	272.9
etc	5.9	291.0
S	3.7	293.2

276.92

1+0

S	3.7	293.2
etc	5.0	291.9
N	22.9	274.0

1+25

N	22.5	274.4
etc	4.6	290.5
S	3.4	293.5

1+50

S	3.0	293.9
etc	4.4	292.5
N	12.3	284.6

1+75

N	11.6	285.3		
etc	3.7	293.0		
S	2.0	294.9		
T.P.	4.75	299.23	2.48	294.48

63

29923

4+0

S	4.2	2950
ctr	5.6	2936
N	11.6	2876

2+30 = W.L. Vermont St

N	9.1	2901
ctr	5.0	2942
S	3.8	2954

2+75

S	3.2	2960
ctr	4.5	2947
N	8.5	2907

3+0

N	8.5	2907
ctr	4.4	2948
S	3.1	2961

29923

3+29 = F.L. Vermont St 64

S	2.8	2964
ctr	4.2	2950
N	8.2	2910

3+50

N	8.3	2909
ctr	4.3	2949
S	2.6	2966

3+75

S	2.3	2969
ctr	4.0	2952
N	7.9	2918

4+0

N	6.9	2923
ctr	3.9	2953
S	1.9	2973

299.23

A+25

S	2.5	296.7
ctr	3.8	295.4
N	6.3	292.9

A+50

N	5.6	293.6
ctr	3.6	295.6
S	2.3	296.9

A+99² = N.L. Hayes = 1-sec "D"

S	2.4	296.8
ctr	3.7	295.5
N	5.9	293.3

0+25 E of sec "D"

N	6.6	292.6
ctr	3.6	295.6
S	2.5	296.7

T.P. 2.19 299.07 2.35 296.88

299.67

0+50 E

S	2.5	296.6
ctr	3.8	295.3
N	6.2	292.9

0+75

N	6.6	292.5
ctr	4.2	294.9
S	2.8	296.3

1+08³ = 1-sec E.

S	2.7	296.4
ctr	4.4	294.7
N	10.3	288.8

1-sec "F"

N	10.3	288.8
ctr	4.6	294.5
S	9.0	295.1

299.07

1 sec 6"

S	4.0	295.1
ctr	4.7	294.2
N	13.8	285.3

0+25 E of 6"

N	13.5	285.6
ctr	5.5	293.6
S	4.0	295.1

0+50 E

S	4.4	294.7
ctr	7.1	292.0
N	16.2	282.9

0+75

N	18.2	280.9
ctr	7.6	291.5
S	4.8	294.3

299.07

1+0

66

S	3.9	295.2
ctr	8.0	291.1
N	17.5	281.6

1+25

N	16.2	282.9
ctr	6.3	292.8
S	3.4	295.7

1+50

S	3.3	295.8
ctr	5.5	293.6
N	19.8	279.3

1+75

N	19.2	279.9
ctr	4.4	294.7
S	2.8	296.3

299.07

2+04⁸ = 1-sec H"

S	2.7	296.4
ctu	4.0	295.1
N	12.2	280.9

1-sec "I"

N	20.5	278.6
---	------	-------

ctu	3.9	295.2
-----	-----	-------

S	2.7	296.4
---	-----	-------

1-sec "J"

S	2.7	296.4
---	-----	-------

ctu	3.9	295.2
-----	-----	-------

N	17.0	282.1
---	------	-------

T.P.	6.17	302.34	2.90	296.17
------	------	--------	------	--------

0+32⁸ E of J = N.L. Buchanan

N	11.6	290.7
---	------	-------

ctu	5.6	296.1
-----	-----	-------

S	5.0	297.3
---	-----	-------

302.34

0+75 E of J.

67

S	4.9	297.4
---	-----	-------

ctu	4.7	297.6
-----	-----	-------

N	6.5	295.8
---	-----	-------

1+0 E

N	5.3	297.0
---	-----	-------

ctu	4.5	297.8
-----	-----	-------

S	4.8	297.5
---	-----	-------

1+29² on N 8 17 55³ on S = N.L. Lincoln

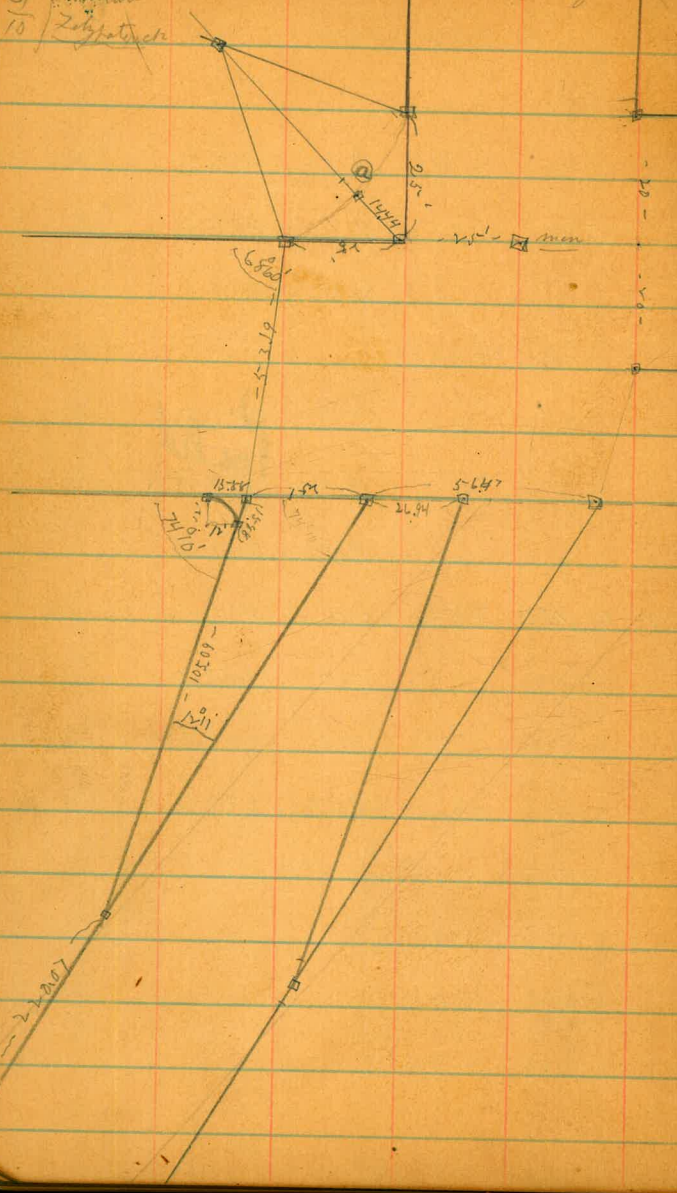
S	4.1	298.2
---	-----	-------

ctu	4.8	297.5
-----	-----	-------

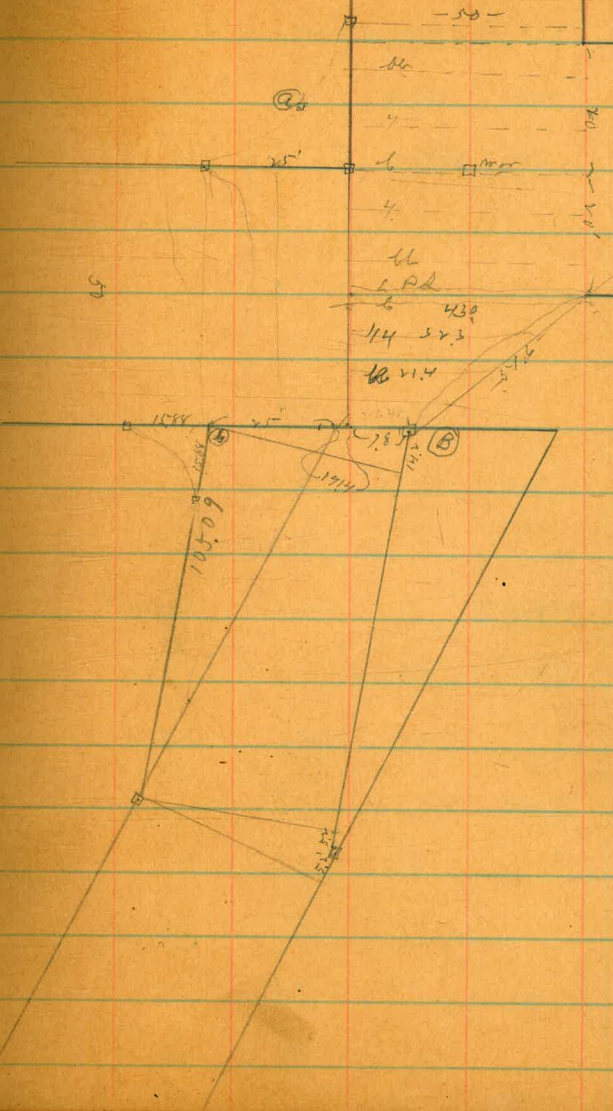
N	4.7	297.6
---	-----	-------

297.0
 Posted
 297.8

8 Along
 31
 10 Survey of Intersect of Pine + Walnut St (Change)



68
 X of Intersect of Pine + Walnut St (Change)



11
 1 Pd
 430
 114 32.3
 10 11.4

X₂ of Pine St 25' W of Kitchy to
220° 27' E of center

329	269.63		266.34
0.84	257.44	13.13	254.60
702	254.09	10.37	247.17

25' W of Kitchy St

hL		0.5	253.6
hL		1.2	
?		1.4	
h		2.1	252.0
?		2.1	
h		2.1	
SL = P6 on SL		2.2	251.9
(+3)	W 1/2 of Hartentia St 40'		
SL		3.0	251.1
hL		2.9	
?		2.1	
h		2.5	251.6
?		2.0	
hL		1.8	
hL		1.0	253.1

254.67

69

W 1/2 of Hartentia St

n		2.2	251.8
hL		2.5	
?		3.0	
h		3.7	250.4
?		4.0	
hL		4.2	
S		4.5	249.6

W 1/4 of Hartentia

S		5.0	249.1
hL		5.2	
?		4.9	
h		4.2	249.9
?		3.4	
hL		3.2	
n		3.0	251.1

center of lower Lu @ Page 68

3.7	250.4
-----	-------

25489

E 1/2 Westly Center of Hartenstein st

n.	37	250.4
ll	39	
y	40	
l	47	249.4
y	54	
ll	60	
S	66	247.5

E 1/4 of Hartenstein st

S	66	247.5
ll	67	
y	65	
l	57	249.4
y	53	
ll	52	
n	47	249.4

25487

Page 11

70

E 1/2 of Hartenstein st

ll	48	249.3
ll	54	
y	60	
l	66	247.5
y	72	
ll	73	
S	74	246.7

E line of Hartenstein st

S	80	246.1
ll	87	
y	95	
l	93	244.8
y	88	
ll	86	
n	82	245.9

254.09

(33) 45' = Cont. of weatherly

NL+7.	99	244.2
ll	99	
7	107	
6	104	243.7
7	106	
ll	97	
S	87	245.4

(323) E 1/4 of Weatherly st

S	107	243.4
ll	127	
7	129	
6	120	242.1
7	124	

TP	110	247.36	783	246.26	Pool
----	-----	--------	-----	--------	------

247.36

Pin

71

(214) E 1/4 of Weatherly st

6+36	74	
4	74	
ll	80	
S	66	240.8

(28) E 2 of Weatherly

ll+27	= Point (B)	102	
S		105	236.9

TP	817	254.43	246.2	Btm
----	-----	--------	-------	-----

S 1/4 of Weatherly st Pin 5

S 1/4 of Pin st

N2	60	248.4
ll	77	
7	79	
6	90	245.4
7	109	
ll	134	
E	175	236.9

25443

25' S of Pin = 86 m w

E	134	241.0
H	99	
Y	86	
b	71	247.3
7	71	
H	65	
w = 8.6	44	250.0

44' S of Pin 15 = S L Pin on E L

w	33	251.1
H	48	
Y	58	
b	60	249.4
7	64	
H	70	
	76	248.8

25443

Wetherby

60' S of Pin = E bar E L

72

E	28	251.6
H	41	
Y	44	
b	40	250.4
7	35	
H	25	
w	22	252.2

9 Height of Pine st from E of Michael to
 10 22407 w. b. curve

(5.34) E side of Michael st

0.15	24641	24626
2.2		
h	9.3	237.1
	84	
	6.3	
h	6.3	240.1
	4.0	
h	1.4	
S 2 (6)		2489

E of Michael on S } = 00
 17.25 of " " " }

S 2 (6)		2489
h	15	
	15	
	5.8	
h	8.3	238.1
	10.0	
h	12.3	
h	13.1	233.3

24641

Pine st

73

15.88' E of Michael

h	204	226.0
h	160	
	118	
h	87	237.7
	5.7	
h	16	
S	= P.B. of curve	25.15

25' E of Michael st

h	200	226.4
h	175	
	122	
h	88	237.6
	69	
h	20	
S		25.22

24641

40° E of Wetherby st

N 20.3 226.1

SE 17.0

Y 14.6

E 9.5 236.9

Y 6.0

SE 1.4

S 252.9

50° E of Wetherby st

N 14.4 232.0

SE 11.5

Y 9.2

E 7.1 239.3

Y 5.0

SE 0.2

S 252.8

246.41

Pens st

74

75° E of Wetherby st

N 8.7 237.5

SE 6.3

Y 4.7

1006 2562 15 2466

SE 12.0 244.3

Y 10.6

SE 7.1

S 1.2 254.7

E of Wetherby st

S 7.4 248.9

+4 7.5

1588 E of Wetherby st

S 4.8 251.5

255° E of Wetherby st

S 4.1 252.2

55

25632

	40'	E of	Wetherby st	
SL			34	252.9
	50'	E of	Wetherby st	
SL			25	253.8
	105.09	E of	Wetherby st = angle on S	
SL			10.9	245.4
SL			8.3	
			6.6	
			5.3	251.0
			4.0	
			2.5	
SL			1.4	254.9

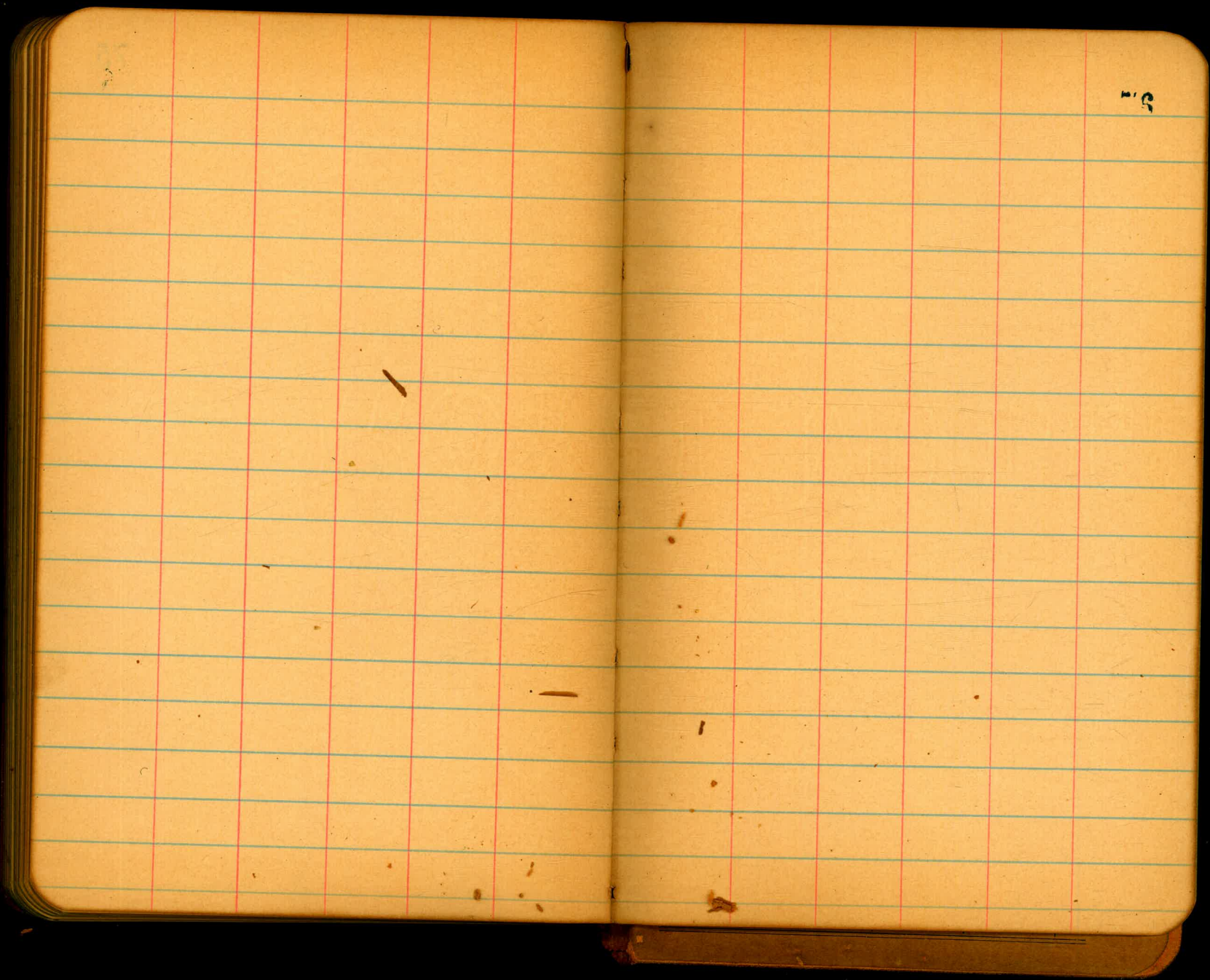
25632

Pin

75

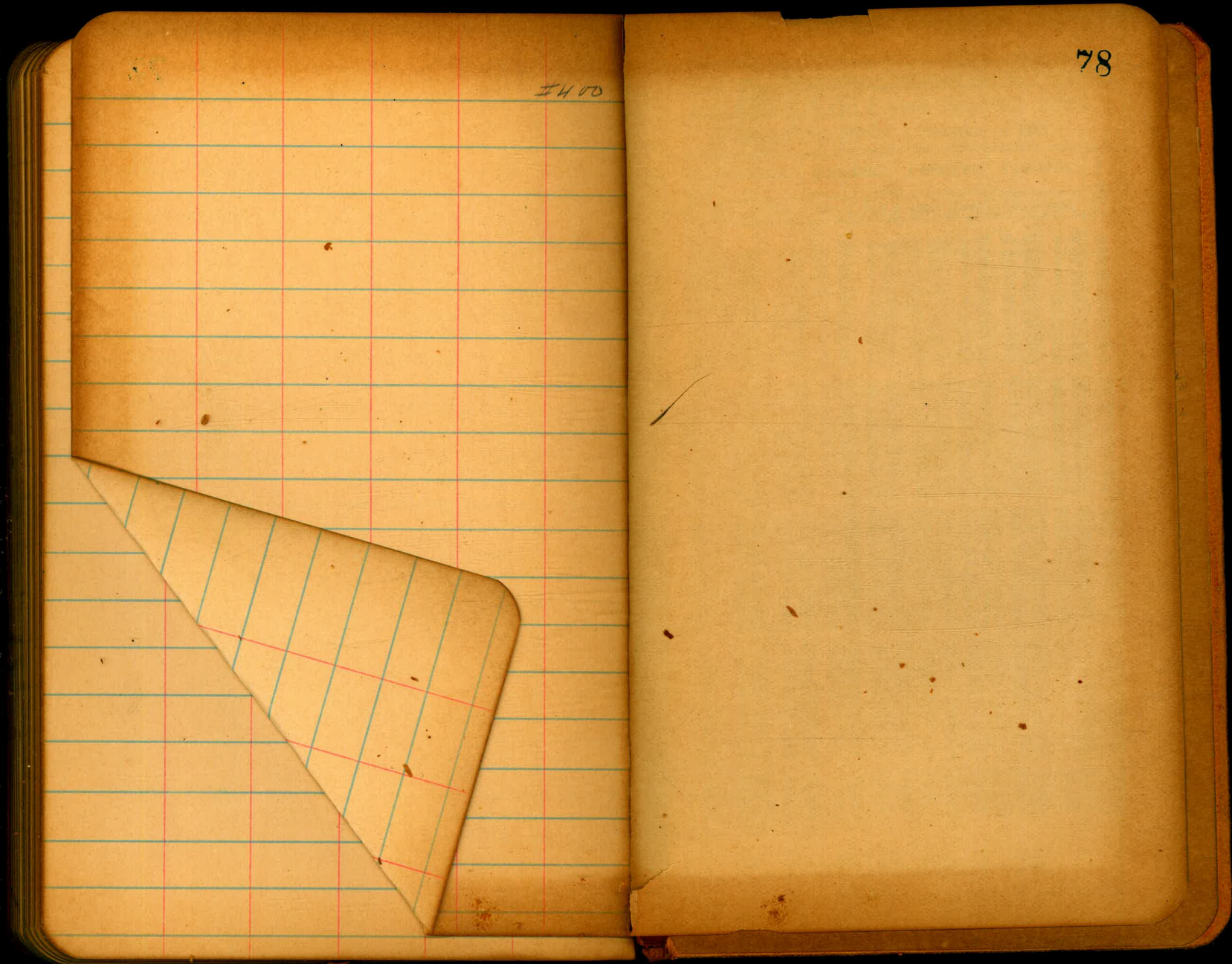
104 E or 71 } = 220.07 w of course
 105.09 in S & } = 105.09 E of Wetherby in S &

S	14	254.9
SL	29	
	37	
	45	251.8
	57	
	66	
	91	247.4



51

77



1400

78

Published by H. S. CROCKER COMPANY, Stationers, Drawing Materials, Mathematical Instruments, etc., San Francisco.

TRAVERSE TABLE FOR TRANSIT BOOK.

From 1° to 90° for a distance of 100.

Degrees.	DEGREES.		¼ DEGREE.		½ DEGREE.		¾ DEGREE.		Degrees.
	Lat.	Dep.	Lat.	Dep.	Lat.	Dep.	Lat.	Dep.	
0	99.98	1.75	100.00	0.44	100.00	0.87	99.99	1.31	89
1	99.98	1.75	99.98	2.18	99.97	2.62	99.95	3.05	88
2	99.94	3.49	99.92	3.93	99.91	4.36	99.88	4.80	87
3	99.86	5.23	99.84	5.67	99.81	6.10	99.79	6.54	86
4	99.76	6.98	99.73	7.41	99.69	7.85	99.66	8.28	85
5	99.62	8.72	99.58	9.15	99.54	9.58	99.50	10.02	84
6	99.45	10.45	99.41	10.89	99.36	11.32	99.31	11.75	83
7	99.25	12.19	99.20	12.62	99.14	13.05	99.09	13.49	82
8	99.03	13.92	98.97	14.35	98.90	14.78	98.84	15.21	81
9	98.77	15.64	98.70	16.07	98.63	16.50	98.56	16.93	80
10	98.48	17.36	98.40	17.79	98.33	18.22	98.25	18.65	79
11	98.16	19.08	98.08	19.51	97.99	19.94	97.90	20.36	78
12	97.81	20.79	97.72	21.22	97.63	21.64	97.53	22.07	77
13	97.44	22.50	97.34	22.92	97.24	23.34	97.13	23.77	76
14	97.03	24.19	96.92	24.62	96.81	25.04	96.70	25.46	75
15	96.59	25.88	96.48	26.30	96.36	26.72	96.25	27.14	74
16	96.13	27.56	96.00	27.98	95.88	28.40	95.76	28.22	73
17	95.63	29.24	95.50	29.65	95.37	30.07	95.24	30.49	72
18	95.11	30.90	94.97	31.32	94.83	31.73	94.69	32.14	71
19	94.55	32.56	94.41	32.97	94.26	33.38	94.12	33.79	70
20	93.97	34.20	93.82	34.61	93.67	35.02	93.51	35.43	69
21	93.36	35.84	93.20	36.24	93.04	36.65	92.88	37.06	68
22	92.72	37.46	92.55	37.86	92.39	38.27	92.22	38.67	67
23	92.05	39.07	91.88	39.47	91.71	39.87	91.53	40.27	66
24	91.35	40.67	91.18	41.07	91.00	41.47	90.81	41.87	65
25	90.63	42.26	90.45	42.66	90.26	43.05	90.07	43.44	64
26	89.88	43.84	89.69	44.23	89.49	44.62	89.30	45.01	63
27	89.10	45.40	88.90	45.79	88.70	46.17	88.50	46.56	62
28	88.29	46.95	88.09	47.33	87.88	47.72	87.67	48.10	61
29	87.46	48.48	87.25	48.86	87.04	49.24	86.82	49.62	60
30	86.60	50.00	86.38	50.38	86.16	50.75	85.94	51.13	59
31	85.72	51.50	85.49	51.88	85.26	52.25	85.04	52.62	58
32	84.80	52.99	84.57	53.36	84.34	53.73	84.10	54.10	57
33	83.87	54.46	83.63	54.83	83.39	55.19	83.15	55.56	56
34	82.90	55.92	82.66	56.28	82.41	56.64	82.16	57.00	55
35	81.92	57.36	81.66	57.71	81.41	58.07	81.16	58.42	54
36	80.90	58.78	80.64	59.13	80.39	59.48	80.13	59.83	53
37	79.86	60.18	79.60	60.53	79.34	60.88	79.07	61.22	52
38	78.80	61.57	78.53	61.91	78.26	62.25	77.99	62.59	51
39	77.71	62.93	77.44	63.27	77.16	63.61	76.88	63.94	50
40	76.60	64.28	76.32	64.61	76.04	64.94	75.76	65.28	49
41	75.47	65.61	75.18	65.93	74.90	66.26	74.61	66.59	48
42	74.31	66.91	74.02	67.24	73.73	67.56	73.43	67.88	47
43	73.14	68.20	72.84	68.52	72.54	68.84	72.24	69.15	46
44	71.93	69.47	71.63	69.78	71.33	70.09	71.02	70.40	45
45	70.71	70.71							
Degrees.	Dep.	Lat.	Dep.	Lat.	Dep.	Lat.	Dep.	Lat.	Degrees.
Degrees.	DEGREES.		¼ DEGREE.		½ DEGREE.		¾ DEGREE.		Degrees.

266.34 Feet Slope + 266.34
Sp. Part of Tree

499.2
264
499.2
264

3.93

299.07
3.76

302.34
3.36

307.58