

PROPERTY OF CITY ENGINEER'S OFFICE  
CITY HALL, SAN DIEGO, CAL.

Returned to City Engineer's Office  
City Hall, San Diego, Cal.

400  
LEVEL

F.B. 500

Table showing the difference of latitude and departure in running 80 chains at any course from 1 to 60 minutes.

MINUTES.	LKS.	MINUTES.	LKS.	MINUTES.	LKS.
1	21 $\frac{1}{2}$	21	49	41	95 $\frac{1}{2}$
2	43 $\frac{1}{2}$	22	51 $\frac{1}{2}$	42	98
3	65 $\frac{1}{2}$	23	53 $\frac{1}{2}$	43	100 $\frac{1}{2}$
4	87 $\frac{1}{2}$	24	56	44	102 $\frac{1}{2}$
5	109 $\frac{1}{2}$	25	58 $\frac{1}{2}$	45	105
6	131 $\frac{1}{2}$	26	60 $\frac{1}{2}$	46	107 $\frac{1}{2}$
7	153 $\frac{1}{2}$	27	63	47	109 $\frac{1}{2}$
8	175 $\frac{1}{2}$	28	65 $\frac{1}{2}$	48	112
9	197 $\frac{1}{2}$	29	67 $\frac{1}{2}$	49	114 $\frac{1}{2}$
10	219 $\frac{1}{2}$	30	70	50	116 $\frac{1}{2}$
11	241 $\frac{1}{2}$	31	72 $\frac{1}{2}$	51	119
12	263 $\frac{1}{2}$	32	74 $\frac{1}{2}$	52	121 $\frac{1}{2}$
13	285 $\frac{1}{2}$	33	77	53	123 $\frac{1}{2}$
14	307 $\frac{1}{2}$	34	79 $\frac{1}{2}$	54	126
15	329 $\frac{1}{2}$	35	81 $\frac{1}{2}$	55	128 $\frac{1}{2}$
16	351 $\frac{1}{2}$	36	84	56	130 $\frac{1}{2}$
17	373 $\frac{1}{2}$	37	86 $\frac{1}{2}$	57	133
18	395 $\frac{1}{2}$	38	88 $\frac{1}{2}$	58	135 $\frac{1}{2}$
19	417 $\frac{1}{2}$	39	91	59	137 $\frac{1}{2}$
20	439 $\frac{1}{2}$	40	93 $\frac{1}{2}$	60	140

TABLE FOR RUNNING ON SLOPES.

In the following table the first column shows the angle, the second the number of links to be added to a chain on the slopes, to make one chain, horizontal measurement.

ANGLE	COR. IN LINKS	ANGLE	COR. IN LINKS	ANGLE	COR. IN LINKS	ANGLE	COR. IN LINKS
0		0		0		0	
4	0.24	11	1.88	18	5.14	25	10.54
5	0.38	12	2.24	19	5.76	26	11.26
6	0.55	13	2.63	20	6.42	27	12.24
7	0.76	14	3.06	21	7.11	28	13.37
8	0.98	15	3.53	22	7.85	29	14.34
9	1.24	16	4.02	23	8.64	30	15.47
10	1.55	17	4.56	24	9.47	35	22.07

Crocker Quality

LEVEL BOOK

No. 400



MANUFACTURED BY

A. S. Crocker & Co.

SAN FRANCISCO

and

SACRAMENTO

W section Gatti St. W. Goldfinch 7. m. 2615  
" 50' wide

10/20/69

Beukela  
Shaw  
Deyzel 1

B.M. Brass 24 Washington & Hawk, 263.03

B.M. 10.39 273.42

W. L. Goldfinch

S

4.6

POSTED 268.8

Cube

4.3

269.1

"

4.7

268.7

N

3.5

269.9

"

4.0

269.4

Cube

4.4

269.0

N

4.2

269.2

0+25' W. of Goldfinch

N

4.2

269.2

Cube

4.2

269.2

"

4.4

269.0

N

4.1

269.3

"

4.1

269.3

Cube

4.4

269.0

S

4.3

269.1

0+50

S	1.2	269.2
erb	1.2	269.2
"A	3.0	270.4
M	2.3	271.1
"A	2.5	270.6
erb	3.8	269.6
N	4.3	269.1

0+75

N	3.7	269.7
erb	3.4	270.0
"A	2.2	270.6
M	2.5	270.9
"A	2.9	270.5
erb	3.7	269.7
S	4.0	269.4

1+0

S	3.9	269.5
erb	3.4	270.0
"A	2.9	270.5
M	2.5	270.9
"A	3.3	270.1
erb	3.4	270.0
N	3.5	269.9

1+25

N	2.4	271.0
erb	2.9	270.5
"A	3.2	270.2
M	3.0	270.4
"A	3.6	269.8
erb	3.9	269.5
S	3.6	269.8

273.42

1750

S	3.6	269.8
crb	3.7	269.7
"4	3.3	270.1
N	2.9	270.5
"4	3.2	270.2
crb	3.2	270.2
N	3.2	270.2

1775

N	2.4	271.0
crb	3.4	270.0
"4	3.5	269.9
N	3.4	270.0
"4	4.1	269.3
crb	4.0	269.4
S	3.9	269.5

270 = E.L. Hawk, St Graded

3

S	4.2	269.2
crb	4.4	269.0
"4	4.1	269.3
N	3.8	269.6
"4	4.0	269.4
crb	3.8	269.6
N	3.1	270.3

W.L. Hawk St

N	4.6	268.8
crb	4.9	268.5
"4	5.1	268.3
N	4.8	268.6
"4	5.3	268.1
crb	5.0	268.4
S	5.0	268.4

273.42

0+25 m of HamH

S	5.4	268.0
erb	5.3	268.1
"	5.0	268.4
M	4.6	268.8
"	5.0	268.4
erb	5.0	268.4
N	4.5	268.9

0+50

N	4.9	268.5
erb	5.1	268.3
"	5.0	268.4
M	4.9	268.5
"	5.1	268.3
erb	5.5	267.9
S	5.6	267.8

0+75

S	5.3	268.1
erb	5.5	267.9
"	5.2	268.2
M	5.1	268.3
"	5.0	268.4
erb	5.0	268.4
N	4.9	268.5

1+0

N	4.8	268.6
erb	4.8	268.6
"	4.9	268.5
M	4.5	268.9
"	4.8	268.6
erb	5.3	268.1
S	5.4	268.0

4

273.42

1+25

S 4.7 268.7

Crb 4.7 268.7

" 3.7 269.7

N 3.4 270.0

" 3.7 269.7

Crb 4.4 269.0

N 4.5 268.9

1+50

N 2.8 270.6

Crb 3.4 270.0

" 4.2 269.2

N 4.2 269.2

" 4.3 269.1

Crb 4.6 268.8

S 4.6 268.8

1+75

5

S 3.2 270.2

Crb 3.3 270.1

" 3.8 269.6

N 3.9 269.5

" 4.1 269.3

Crb 3.6 269.8

N 2.9 270.5

2+0 = E.L. I.G. is 80' wide

N 3.5 269.9

Crb 3.5 269.9

" 3.8 269.6

N 3.7 269.7

" 3.7 269.7

Crb 3.8 269.6

S 4.0 269.4

S	3.8	269.6
wh	3.5	269.9
"A	3.4	270.0
N	3.2	270.2
"A	3.6	269.8
wh	3.5	269.9
N	3.4	270.0

E "A

N	3.3	270.1
wh	3.1	270.3
"A	3.1	270.3
N	2.5	270.9
"A	3.1	270.3
wh	3.4	269.8
S	3.5	269.9

S	3.3	270.1
wh	3.5	269.9
"A	2.9	270.5
N	2.3	271.1
"A	2.4	271.0
wh	2.4	271.0
N	2.9	270.5

N "A

N	2.7	270.7
wh	2.4	271.0
"A	2.9	270.5
N	2.7	270.7
"A	2.8	270.6
wh	3.0	270.4
S	3.1	270.3



273.02

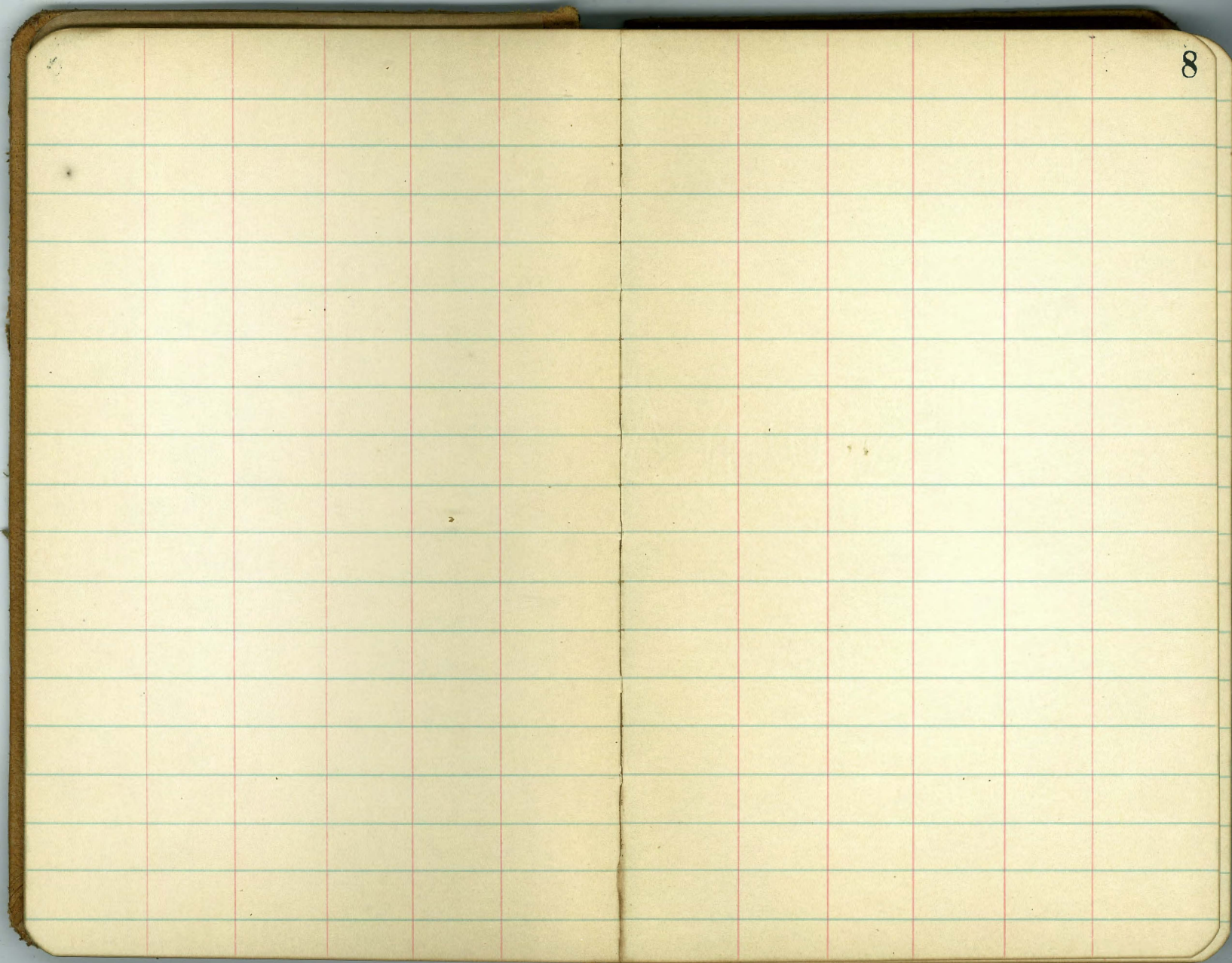
W. COPE

7

S	3.1	270.3
Crk	3.1	270.3
"A	2.9	270.5
M	2.8	270.6
"A	2.9	270.5
Crk	2.8	270.6
N	2.1	271.3

W.L. Ibis ST

N	1.8	271.6
Crk	POSTED	2.9 271.0
"A	2.7	270.7
M	2.8	270.6
"A	2.7	270.7
Crk	2.8	270.6
S	2.9	270.5



8

x section Eagle St Douglas to Broadway

101  
109

Quirk  
Shaw  
Lipick

Note - Quarters not taken. Per instructions from office, readings taken 5' in from curb. 9

B.M. across Ely N.E. Eagle & Washington 265.05

B.M. 2.19 265.24

N.E. Douglas St

W 4.7 260.5  
cub 5.3 259.9  
gtw 6.1 259.1

POSTED

+ 5 6.1 259.1

M 6.1 259.1

+ 1 5.3 259.9

+ 21 5.7 259.5

cub 5.8 259.4

F 6.2 259.0

+ 25 N. of Douglas

- 15 14.2 251.0

E 9.3 255.9

cub 5.9 259.3

+ 5 5.4 259.8

+ 25 5.1 260.1

M 5.9 259.3

+ 21 5.9 259.3

gtw 5.7 259.5

cub 5.2 260.0

W 5.0 260.2

W 4.7 260.5

cub 5.0 260.2

gtw 5.7 259.5

+ 5 5.8 259.4

M 5.7 259.5

POSTED

+ 21 5.4 256.8

cub 8.8 256.4

F 13.1 252.1

+ 25 20.5 244.7

0 + 75

- 15 21.5 243.7

- 30 26.3 238.9

E 18.2 247.0

cub 19.9 250.3

+ 5 13.0 252.2

+ 16 9.9 255.3

+ 24 5.5 259.7

M 5.4 259.8

+ 21 5.6 259.6

gtw 5.5 259.7

cub 5.0 260.2

W 4.5 260.7

W	4.5	260.7
crb	4.7	260.5
gtu	5.4	259.8
+5	5.5	259.7
M	5.1	260.1
+2	5.2	260.0
+16	14.9	250.3
+21	17.1	248.1
crb	18.8	246.4
E	22.4	242.8
+20	30.0	235.2
+35	27.1	238.1

-20	23.0	242.2
E	26.3	238.9
+9	26.1	239.1
crb	21.5	243.7
+5	18.0	247.2
+25	4.9	260.3
M	4.8	260.4
+21	5.3	259.9
gtu	5.1	260.1
crb	4.4	260.8
W	4.2	261.0

W	4.0	261.2
crb	4.2	261.0
gtu	5.1	260.1
+5	5.2	260.0
M	4.8	260.4
+1	4.9	260.3
+21	17.3	247.9
crb	18.7	246.5
E	18.4	246.8
+20	17.0	248.2

-20	10.1	255.1
E	11.5	254.7
crb	12.1	253.1
+5	11.7	253.5
+14	11.7	253.5
+24	4.5	260.7
M	4.5	260.7
+21	4.8	260.4
gtu	4.9	260.3
crb	4.1	260.1
W	3.8	260.4

265.24

1+90

W	3.6	261.6
crk	4.0	261.2
gtw	4.9	260.3
+5	4.8	260.4
M	4.1	261.1
+10	6.5	258.7
+21	5.1	260.1
crk	5.3	259.9
E	6.4	258.8

2+0

E	4.6	260.6
crk	5.1	260.1
+5	5.2	260.0
+16	5.2	260.0
M	4.1	261.1
+21	4.7	260.5
gtw	4.7	260.5
crk	3.9	261.3
W	3.7	261.5

11

2+25

W	3.5	261.7
crk	3.8	261.4
gtw	4.4	260.8
+5	4.5	260.7
M	3.8	261.4
+21	4.2	261.0
+24	4.8	260.4
crk	4.1	261.1
E	3.8	261.4

2+50

E	2.5	262.7
crk	3.0	262.2
+2	4.3	260.9
+5	3.2	262.0
M	3.6	261.6
+21	4.4	260.8
gtw	4.4	260.8
crk	3.5	261.7
W	3.3	261.9

2+74 = S.L. Washington Graded

W	3.0	262.2
crk	3.3	261.9
gte	4.2	261.0
+5	4.1	261.1
M	3.3	261.9
+21	3.4	261.8
+24	4.1	261.1
crk	2.6	262.6
E	0.8	264.4

T.P.	2.01	270.06	2.19	263.05
------	------	--------	------	--------

N.L. Washington St

E	5.5	264.6
+10	5.8	264.3
crk	6.6	263.5
+5	6.4	263.7
M	5.6	264.5
+21	5.4	264.7
crk	5.1	265.0
W	4.5	265.6

0+25 N. of Washington

W	3.4	266.7
+6	3.5	266.6
+7	4.2	265.9
crk	4.4	265.7
+5	4.5	265.6
M	4.5	265.6
+21	5.5	264.6
+25	5.3	264.8
crk	4.9	265.2
E	5.3	264.8

0+50

E	4.4	265.7
crk	4.4	265.7
+5	5.3	264.8
M	4.7	265.4
+21	4.3	265.8
crk	4.0	266.1
+6	3.7	266.4
+7	3.2	266.9
W	2.8	267.2

270.06

0+75

W	3.0	267.1
+8	3.6	266.5
+9	4.1	266.0
crk	4.2	265.9
+5	4.6	265.5
M	4.9	265.2
+21	5.1	265.0
+23	4.5	265.6
crk	4.6	265.5
E	4.6	265.5
1+0		
E	5.5	264.6
crk	5.3	264.8
+5	5.5	264.8
M	5.2	264.9
+21	5.3	264.8
crk	5.2	264.9
+5	4.7	265.4
+6	4.0	266.1
W	3.2	266.9

13

1+25

W	3.6	266.5
+7	4.3	265.8
+8	4.8	265.3
crk	5.1	265.0
+5	5.0	265.1
M	5.3	264.8
+21	6.3	263.8
crk	6.0	264.1
E	6.1	264.0

1+50

E	7.1	263.0
crk	6.6	263.5
+5	6.9	263.2
M	5.9	264.2
+21	5.0	265.1
crk	4.7	265.4
+5	4.2	265.9
+6	3.5	266.6
W	3.4	266.7

W	3.6	266.5
+ 8	4.0	266.1
+ 9	4.8	265.3
crk	5.2	264.9
+ 5	5.7	264.4
M	6.3	263.8
+ 21	6.9	263.2
crk	7.2	262.9
E	8.3	261.8

E	9.5	261.6
crk	6.7	263.5
+ 5	7.3	262.8
M	6.4	263.7
+ 21	5.8	264.3
crk	5.4	264.7
+ 6	5.2	264.9
+ 7	4.6	265.5
W	3.8	266.3

W	4.3	265.8
crk	5.8	264.3
+ 5	6.1	264.0
M	6.4	263.7
+ 21	7.3	262.8
crk	6.9	263.2
E	9.5	261.6

E	7.4	262.7
crk	6.8	263.3
+ 3	6.4	263.7
+ 4	7.0	263.1
+ 5	7.0	263.1
M	6.1	264.0
+ 21	6.0	264.1
crk	5.8	264.3
+ 8	5.4	264.7
+ 9	4.7	265.4
W	4.3	265.8



W	4.0	266.0
+4	4.2	255.9
+6	5.1	265.0
crk	5.3	264.8
+5	5.3	264.8
M	5.7	264.4
+21	6.6	263.5
+22	5.8	264.3
crk	6.0	264.1
E	6.4	263.7

3+00<sup>6</sup> = S.L. Gett. 50 wide

F	5.6	264.5
crk	5.2	264.9
+3	5.1	265.0
+4	5.8	264.3
+5	5.8	264.3
M	5.3	264.8
+21	5.1	265.0
crk	4.8	265.3
W	4.1	266.0

W	4.0	266.1
crk	4.9	265.2
+5	4.8	265.3
M	5.2	264.9
+21	5.5	264.6
+23	4.6	265.5
crk	4.8	265.3
E	4.9	265.2

S "A

E	4.6	265.5
crk	4.6	265.5
+3	4.6	265.5
+5	5.3	264.8
M	5.0	265.1
+21	4.8	265.3
crk	4.8	265.3
W	3.8	266.3

center

W	3.7	266.4
erb	4.6	265.5
+5	4.7	265.4
M	4.9	265.2
+21	5.1	265.0
+22	4.5	265.6
erb	4.4	265.7
E	4.5	265.6

N<sup>14</sup>

E	4.4	265.7
erb	4.3	265.8
+3	4.2	265.9
+5	5.1	265.0
M	4.8	265.3
+21	4.7	265.4
erb	4.4	265.7
W	3.4	266.7

N curl

W	3.2	266.9
erb	4.2	265.9
+5	4.7	265.4
M	4.6	265.5
+21	4.8	265.3
+23	4.1	266.0
erb	3.9	266.2
E	4.1	266.0

N.L. Gatti

E	3.7	266.4
erb	3.7	266.4
+4	3.9	266.2
+5	4.5	265.6
M	4.4	265.7
+21	4.6	265.5
erb	4.3	265.8
W	3.2	266.9

0+25 N of Gotti St

W	2.7	267.4
erb	4.0	266.1
+5	3.8	266.3
M	3.6	266.5
+21	3.4	266.7
+23	2.7	267.4
erb	3.0	267.1
E	3.1	267.0

0+50

E	2.3	267.8
erb	2.2	267.9
+3	2.2	267.9
+5	3.0	267.1
M	2.9	267.2
+21	3.4	266.7
erb	3.3	266.8
W	2.0	268.1

0+75

W	1.9	268.2
+2	2.2	267.9
+3	2.8	267.3
erb	2.9	267.2
+5	2.9	267.2
M	2.4	267.7
+21	2.8	267.3
+23	2.5	267.6
+25	1.8	268.3
erb	1.9	268.2
E	2.2	267.9

1+0

E	1.4	268.7
erb	1.6	268.5
+5	2.4	267.7
M	2.2	267.9
+21	2.3	267.8
erb	2.2	267.9
+9	2.3	267.8
+10	1.7	268.4
W	1.5	268.6
T.P	2.24	275.75
	2.05	268.01

275.75

1+25

W	6.8	269.0
+4	6.9	268.9
+5	7.6	268.2
crb	7.6	268.2
+5	7.7	268.1
M	7.1	268.7
+21	7.5	268.3
crb	6.7	269.1
F	7.0	268.8

1+50

F	6.7	269.1
crb	6.4	269.4
+5	7.0	268.8
M	6.5	269.3
+21	7.0	268.8
crb	7.0	268.8
+9	7.2	268.6
+10	6.5	269.3
W	6.5	269.3

18

1+75

W	6.1	269.7
+3	6.2	269.6
+4	6.6	269.2
crb	6.5	269.3
+5	6.3	269.5
M	5.7	270.1
+21	6.7	269.1
crb	6.5	269.3
+1	6.0	269.8
F	6.2	269.6

2+0

F	6.1	269.7
+13	5.7	270.1
crb	6.3	269.5
+5	6.4	269.4
M	5.7	270.1
+21	5.9	269.9
crb	5.7	270.1
+9	5.8	270.0
+10	5.0	270.8
W	5.5	270.3

275.75

2+25

W	5.7	270.1
+5	5.7	270.1
+6	6.2	269.6
crk	5.8	270.0
+5	5.7	270.1
M	5.9	269.9
+21	6.3	269.5
+24	6.1	269.7
+25	5.5	270.3
crk	5.5	270.3
E	6.2	269.6

2+50

E	6.0	269.8
crk	5.6	270.2
+1	5.4	270.4
+2	6.2	269.6
+5	6.3	269.5
M	5.9	269.9
+21	5.4	270.4
crk	5.6	270.2
+6	5.7	270.1
+7	5.2	270.6
W	5.0	270.8

2+75

W	5.0	270.8
+10	4.9	270.9
+11	5.3	270.5
crk	5.3	270.5
+5	5.4	270.4
M	6.0	269.8
+21	6.5	269.3
+24	6.5	269.3
+25	5.9	269.9
crk	5.9	269.9
E	6.3	269.5

3+0<sup>6</sup> = S.L. Lewis st 50' wide

E	6.3	269.5
crk	5.8	270.0
+2	6.8	269.0
+5	6.9	268.9
M	6.0	269.8
+21	5.3	270.5
crk	5.3	270.5
+2	5.3	270.5
+3	4.8	271.0
W	5.0	270.8
T.P.	3.65	274.45
	4.95	270.80

19

101 Dunkle  
121 Shaw  
109 Dwyer

center

W	3.3	271.2
+12	3.5	271.0
+13	4.0	270.5
crk	4.0	270.5
+5	4.0	270.5
M	4.8	269.7
+21	5.7	268.8
crk	5.3	269.2
+1	4.6	269.9
E	5.3	269.2

W	3.2	271.3
+13	3.5	271.0
crk	4.1	270.4
+5	4.1	270.4
M	4.9	269.6
+21	5.8	268.7
+24	5.8	268.7
crk	5.0	269.5
E	5.5	269.0

5 "A

E	5.5	269.0
+13	4.8	269.7
crk	5.5	269.0
+2	6.0	268.5
+5	5.7	268.8
M	4.8	269.7
+21	4.0	270.5
crk	4.0	270.5
+1	3.5	271.0
W	3.3	271.2

N "A

POSTED

E	5.3	269.2
crk	4.8	269.7
+2	6.0	268.5
+5	6.0	268.5
M	5.1	269.4
+21	4.1	270.4
crk	4.1	270.4
+1	3.5	271.0
W	3.0	271.5

N. CURK

W	3.2	271.3
+13	3.6	270.9
CRK	4.2	270.3
+5	4.1	270.4
N	5.4	269.1
+21	6.1	268.4
+24	6.0	268.5
CRK	4.9	269.6
E	5.1	269.4

N. L. Lewis ST

E	5.6	268.9
CRK	5.1	269.4
+2	6.0	268.5
+5	6.3	268.2
N	5.7	268.8
+21	4.2	270.3
CRK	4.1	270.4
+1	3.5	271.0
W	3.2	271.3

0+25 N of Lewis

W	3.7	270.8
+13	3.9	270.6
CRK	4.5	270.0
+5	4.5	270.0
N	5.9	268.6
+21	6.6	267.9
+24	6.6	267.9
CRK	5.5	269.0
E	6.0	268.5

0+50

E	6.3	268.2
CRK	6.2	268.3
+2	6.8	267.7
+5	6.7	267.8
N	6.0	268.5
+21	5.2	269.3
CRK	4.9	269.6
+3	4.8	269.7
+4	4.1	270.4
W	4.0	270.5

0+75

W	4.1	270.4
+ 8	4.6	269.9
+ 9	5.4	269.1
crk	5.5	269.0
+ 5	5.8	268.7
M	6.1	268.4
+ 21	7.0	267.5
crk	6.8	267.7
E	7.1	267.4

1+0

E	8.4	266.1
crk	7.6	266.9
+ 5	7.3	267.2
M	6.2	268.3
+ 21	5.9	268.6
crk	5.8	268.7
+ 6	5.7	268.8
+ 7	4.9	269.6
W	4.6	269.9

1+25

W	4.5	270.0
+ 8	4.9	269.6
+ 9	5.9	268.6
crk	5.7	268.8
+ 5	6.0	269.5
M	6.5	268.0
+ 21	7.8	266.7
crk	8.1	268.4
E	9.0	265.5

1+50

E	8.8	265.7
crk	8.3	266.2
+ 5	7.9	266.6
M	6.3	268.2
+ 21	5.9	268.6
crk	5.7	268.8
+ 8	5.9	268.6
+ 9	5.0	269.5
W	4.9	269.6



W	4.9	269.6
+6	5.1	269.4
+7	5.7	268.8
crk	5.4	269.1
+5	5.5	269.0
M	6.2	268.3
+21	7.7	266.8
crk	8.1	266.4
E	9.1	265.4
2+0		
E	8.6	265.9
crk	7.8	266.7
+5	7.4	267.1
M	5.9	268.6
+21	5.2	269.3
crk	4.8	269.7
W	4.9	269.6

W	5.3	269.2
crk	5.3	269.2
+5	5.4	269.1
M	6.0	268.5
+21	7.0	267.5
crk	7.3	267.2
E	8.2	266.3
2+50		
E	8.4	266.1
crk	7.2	266.7
+5	7.4	267.1
M	6.4	268.1
+21	6.2	268.3
crk	6.3	268.2
W	6.4	268.1

374.45

2775

24

W		8.3	266.2
erb		8.0	266.5
+5		7.9	266.6
M		8.3	266.2
+21		8.8	265.7
erb		8.8	265.7
E		9.2	265.3
3+00 <sup>6</sup> = S.L. Broadway			
E		15.0	259.5
erb		13.2	261.3
+5	POSTED	12.9	261.6
M		11.7	262.8
+21		10.5	264.0
erb		10.4	264.1
W		10.9	263.6



N-section 15th St from D' to E'

" 30' wide

B.M. brass plg 14th St D'

B.M. 5.03 62.50

Sta D' 5'

W 1.5 61.0

cb 3.6 58.9

+1 7.4 55.1

" 6.0 56.5

M 5.9 56.6

" 6.0 56.5

cb 5.3 57.2

E 5.7 56.8

0+25 5.0 of D'

E 2.3 55.2

+8 6.2 56.3

cb 6.1 56.4

" 6.3 56.2

M 6.3 56.2

" 6.8 55.7

cb 7.5 55.0

+1 3.7 58.6

W 1.4 61.1

201 Dwyll

201 Shaw

109 Regil

57.47

0+50

W 2.0 60.5

+13 5.0 57.5

cb 8.2 64.3

" 7.3 65.2

M 6.7 66.8

" 6.3 66.2

+4 6.3 66.2

cb 9.7 52.8

E 15.1 47.4

+20 19.6 42.9

+40 19.7 42.8

0+75

-25 21.3 41.2

E 21.3 41.2

cb 17.1 45.4

" 10.7 51.8

+8 6.6 55.9

M 7.0 55.6

" 7.5 55.0

cb 8.9 53.6

+3 6.0 56.5

+8 4.3 58.2

W 3.7 58.8

62.50

75

1+0

W	5.1	57.4
+7	9.9	57.6
+11	6.5	56.0
+13	9.4	53.1
cb	9.6	52.9
"A	8.2	58.3
+11	7.7	54.8
M	8.0	54.5
+8	11.0	51.5
"A	15.9	46.6
cb	21.9	40.6
E	22.1	40.4
+25	22.3	40.2

1+25

-30	23.4	39.1
E.L.	22.8	39.7
cb	23.1	39.4
+8	23.0	39.5
"A	20.8	41.7
M	10.1	52.4
+3	8.9	53.6
"A	8.8	53.7
cb	10.2	50.3
+2	8.0	54.5
W.L.	7.2	55.3
T.P.	3.40	54.11
	11.79	50.91

54.1

27

1+50

W	4.2	49.9
cb	2.2	51.9
"A	2.5	51.6
+10	3.7	50.4
M	4.0	50.1
"A		
"A	14.2	39.9
cb	15.2	38.9
E	14.9	39.2
+25	11.7	42.4

1+75

-20	11.6	42.5
E.L.	13.5	40.6
cb	16.3	37.8
"A	15.7	38.4
M	6.1	48.0
"A	3.4	50.7
cb	3.5	50.6
+7	3.4	50.7
EV	7.0	47.1

2+0

W	7.3	46.8
+7	3.7	50.4
crb	4.9	49.2
"4	5.0	49.1
M	6.9	47.2
"4	14.7	39.4
crb	15.4	38.7
E	12.6	41.5
+20	12.7	41.4

2+25

-20	13.4	40.7
E	14.3	39.8
crb	15.1	39.0
"4	14.6	39.5
M	8.1	46.0
"4	6.1	46.0
crb	7.0	47.1
W	8.3	45.8

2+50

W	9.6	44.5
crb	8.8	45.3
"4	7.8	46.3
M	8.4	45.7
"4	14.9	39.2
crb	16.0	38.1
E.L.	14.8	39.3
+20	14.6	39.5

2+75

-20	15.2	38.9
E.L.	15.6	38.5
crb	14.7	39.4
"4	14.7	39.4
M	10.1	44.0
"4	9.7	44.4
crb	10.5	43.6
W.L.	10.7	43.4

54.11

29

370 = N. L. "F" 57

N. L.	12.1	42.0
Crk	11.9	42.2
1/4	12.3	41.8
M	14.1	40.0
1/4	16.0	38.1
Crk	14.8	39.3
F. L.	16.5	37.6
+20	15.2	38.9

POSTED





x-section Third St "B" to "K" St. Third St 80' wide  
Showing defects & absence of curb.  
B.M. Brass peg N.M. 3rd & "C" St 41.96  
10' Buntline  
1/2" Saw  
of Dugil

47.26  
0+50

B.M.	5.20	47.26
3.4 "B" St		
W. curb	2.8	44.5
gtr	3.5	43.8
"	2.9	44.4
+ 3.5 = 2' m of rail of m track	2.8	44.5
+ 5.5 = W. rail of W track	2.8	44.5
ctr	2.9	44.4
+ 7.5 = E. rail of E track	2.9	44.4
+ 9.5 = 2' E of E. rail of E track	2.9	44.4
"	2.9	44.4
gtr	3.4	43.9
E. curb	2.8	44.5

0+25.5 of "B" St

E. curb	3.0	44.3
gtr	3.4	43.9
"	3.1	44.2
+ 3.5	3.1	44.2
+ 5.5	3.1	44.2
M	3.1	44.2
+ 7.5	3.0	44.3
+ 9.5	3.1	44.2
"	3.2	44.1
gtr	3.6	43.7
W. curb	3.1	44.2

W curb abrupt drop in curb	3.3	44.0
curb	3.5	43.8
gtr	3.9	43.4
"	3.3	44.0
+ 3.5	3.3	44.0
+ 5.5	3.2	44.1
M	3.3	44.0
+ 7.5	3.3	44.0
+ 9.5	3.2	44.1
"	3.3	44.0
gtr	3.6	43.7
E curb	3.1	44.2
0+75		
E curb	3.2	44.1
gtr	3.7	43.6
"	3.5	43.8
+ 3.5	3.4	43.9
+ 5.5	3.4	43.9
M	3.5	43.8
+ 7.5	3.4	43.9
+ 9.5	3.4	43.9
"	3.5	43.8
gtr	4.0	43.3
W curb	3.7	43.6

1+0

W. curl	3.8	43.5
W. curl abrupt raise in curl	3.6	43.7
gtc	4.4	42.9
"A	3.7	43.6
+3.5	3.5	43.8
+5.5	3.5	43.8
"A	3.5	43.8
+7.5	3.6	43.7
+9.5	3.6	43.7
"A	3.6	43.7
gtc	3.9	43.4
E. curl	3.3	44.0

1+25

E. curl	3.5	43.8
gtc	4.0	43.3
"A	3.8	43.5
+3.5	3.8	43.5
+5.5	3.8	43.5
"A	3.8	43.5
+7.5	3.7	43.6
+9.5	3.8	43.5
"A	3.9	43.4
gtc	4.4	42.9
W. curl	3.8	43.5

1+50

W. curl	4.0	43.3
gtc	4.6	42.7
"A	4.0	43.3
+3.5	4.0	43.3
+5.5	3.9	43.4
"A	3.9	43.4
+7.5	3.9	43.4
+9.5	3.9	43.4
"A	4.0	43.3
gtc	4.1	43.2
E. curl	3.6	43.7

1+75

E. curl	3.7	43.6
gtc	4.3	43.0
"A	4.1	43.2
+3.5	4.0	43.3
+5.5	4.1	43.2
"A	4.1	43.2
+7.5	4.0	43.3
+9.5	4.1	43.2
"A	4.2	43.1
gtc	4.8	42.5
W. curl	4.3	43.0

47.26

2+0

H.erb	4.5	42.8
gtu	5.0	42.3
"	4.4	42.9
+3.5	4.3	43.0
+5.5	4.2	43.1
"	4.3	43.0
+7.5	4.3	43.0
+9.5	4.3	43.0
"	4.4	42.9
gtu	4.4	42.9
E.erb	3.9	43.4

2+25

E.erb	4.1	43.2
gtu	4.6	42.7
"	4.4	42.9
+3.5	4.4	42.9
+5.5	4.4	42.9
"	4.3	43.0
+7.5	4.3	43.0
+9.5	4.4	42.9
"	4.6	42.7
gtu	5.3	42.0
W.erb	4.6	42.7

47.26

2+50

W.erb	4.9	42.4
gtu	5.4	41.9
"	4.7	42.6
+3.5	4.6	42.7
+5.5	4.5	42.8
"	4.5	42.8
+7.5	4.6	42.7
+9.5	4.6	42.7
"	4.6	42.7
gtu	4.7	42.6
E.erb	4.2	43.1

2+75

E.erb	4.2	43.1
gtu	4.8	42.5
"	4.6	42.7
+3.5	4.7	42.6
+5.5	4.7	42.6
"	4.7	42.6
+7.5	4.6	42.7
+9.5	4.8	42.5
"	4.9	42.4
gtu	5.6	41.7
W.erb	5.1	42.2

33

3+0 = N.L.C. St Pared.

w.ck	5.3	42.0
gt	6.3	41.0
"	4.9	42.4
+3.5	4.8	42.5
+5.5	4.8	42.5
M	4.8	42.5
+7.5	4.9	42.4
+9.5	4.9	42.4
"	4.8	42.5
gt	5.3	42.0
F.ck	4.3	43.0

0+0 = S.L.C. St

E.ck	4.3	43.0
gt	5.0	42.3
"	4.7	42.6
+3.5	4.8	42.5
+5.5	4.9	42.4
M	4.8	42.5
+7.5	4.8	42.5
+9.5	5.0	42.3
"	5.1	42.2
gt	5.9	41.4
w.ck	5.3	42.0

0+25 S. of C. St

w.ck	5.3	42.0	
gt	5.8	41.5	
"	5.2	42.1	
+3.5	5.1	42.2	
+5.5	4.9	42.4	
M	4.9	42.4	
+7.5	4.9	42.4	
+9.5	4.8	42.5	
"	4.7	42.6	
gt	5.0	42.3	
F.ck	4.4	42.9	
T.P.	5.74	47.95	
	0+50	5.05	42.21

E.ck	5.0	42.95
gt	5.6	42.35
"	5.6	42.35
+3.5	5.6	42.35
+5.5	5.7	42.25
M	5.7	42.25
+7.5	5.7	42.25
+9.5	5.7	42.25
"	5.9	42.05
gt	6.3	41.65
w.ck	6.0	41.95

47.95

0+75

W. Lab	6.1	41.85
gte	6.4	41.55
"A	6.0	41.95
+ 3.5	5.9	42.05
+ 5.5	5.7	42.25
"A	5.7	42.25
+ 7.5	5.7	42.25
+ 9.5	5.6	42.35
"A	5.5	42.45
gte	5.6	42.35
E. Lab	5.1	42.85

1+0

E. Lab	5.1	42.85
gte	5.6	42.35
"A	5.6	42.35
+ 3.5	5.6	42.35
+ 5.5	5.7	42.25
"A	5.9	42.05
+ 7.5	5.8	42.15
+ 9.5	5.8	42.15
"A	5.9	42.05
gte	6.5	41.45
M. Lab	6.1	41.85

47.95

1+25

W. Lab	6.2	41.75
gte	6.5	41.45
"A	6.2	41.75
+ 3.5	6.0	41.95
+ 5.5	5.8	42.15
"A	5.8	42.15
+ 7.5	5.8	42.15
+ 9.5	5.7	42.25
"A	5.7	42.25
gte	6.1	41.85
E. Lab	5.1	42.85

1+50

E. Lab	5.1	42.85
gte	5.8	42.15
"A	5.6	42.35
+ 3.5	5.8	42.15
+ 5.5	5.8	42.15
"A	5.9	42.05
+ 7.5	5.8	42.15
+ 9.5	5.9	42.05
"A	6.0	41.95
gte	6.4	41.55
W. Lab	6.2	41.75

41.55	6.9	Walk
41.05	6.9	gt
41.85	6.1	W
41.95	6.0	+3.5
42.15	5.8	+5.5
42.35	5.7	M
42.25	5.7	+7.5
42.15	5.7	W
42.15	5.8	+9.5
42.65	5.3	gt
42.05	5.9	gt
42.15	5.8	W
42.35	5.8	+3.5
42.25	5.7	+5.5
42.25	5.7	M
42.25	5.7	+7.5
42.15	5.8	W
42.15	5.8	+9.5
42.35	5.6	W
42.35	5.6	gt
42.15	5.8	Walk

2+50

41.65	6.9	Walk
41.45	6.5	gt
42.05	5.9	W
42.05	5.9	+3.5
41.95	6.0	+5.5
42.05	5.9	M
42.05	5.9	+7.5
42.15	5.8	W
42.35	5.8	+9.5
42.75	5.2	gt
42.15	5.8	gt
42.15	5.8	W
42.35	5.8	+3.5
42.15	5.8	+5.5
42.05	5.9	M
42.15	5.8	+7.5
41.75	6.2	W
41.75	6.2	+9.5
41.05	6.9	gt
41.65	6.9	Walk

41.65	6.9	Walk
41.45	6.5	gt
42.05	5.9	W
42.05	5.9	+3.5
41.95	6.0	+5.5
42.05	5.9	M
42.05	5.9	+7.5
42.15	5.8	W
42.35	5.8	+9.5
42.75	5.2	gt
42.15	5.8	gt
42.15	5.8	W
42.35	5.8	+3.5
42.15	5.8	+5.5
42.05	5.9	M
42.15	5.8	+7.5
41.75	6.2	W
41.75	6.2	+9.5
41.05	6.9	gt
41.65	6.9	Walk

2+0

41.65	6.9	Walk
41.45	6.5	gt
42.05	5.9	W
42.05	5.9	+3.5
41.95	6.0	+5.5
42.05	5.9	M
42.05	5.9	+7.5
42.15	5.8	W
42.35	5.8	+9.5
42.75	5.2	gt
42.15	5.8	gt
42.15	5.8	W
42.35	5.8	+3.5
42.15	5.8	+5.5
42.05	5.9	M
42.15	5.8	+7.5
41.75	6.2	W
41.75	6.2	+9.5
41.05	6.9	gt
41.65	6.9	Walk

2+70<sup>S</sup> = N.L. "D" St on N. side of Third

w. curb	6.5	41.45
gtr	6.8	41.15
"4"	6.4	41.55
+3.5	6.0	41.95
+5.5	5.9	42.05
M	5.8	42.15
+7.5	5.7	42.25
+9.5	5.8	42.15
"4"	5.8	42.15
gtr	5.9	42.05
E. curb	5.4	42.55

(300 on E. side from "C" to "D")

2+95 on E. & 2+75 on N. = N.L. of Asphalt "D" St paving

E. curb	5.4	43.55
gtr	6.1	41.85
"4" = 14' from curb on this line	6.0	41.95
+4	5.8	42.15
+6	5.7	42.25
M	5.9	42.05
+8	5.9	42.05
+10	6.1	41.85
"4" = 14' from curb on this line	6.4	41.55
gtr	7.0	40.95
w. curb	6.5	41.45
T.P.	11.68	41.13 8.00 39.95

Note - 28" concrete top on N. side from sta 0+07 to sta 0+85 curb to left and side walk in poor condition from sta 1+25 to sta 1+85 on W. side

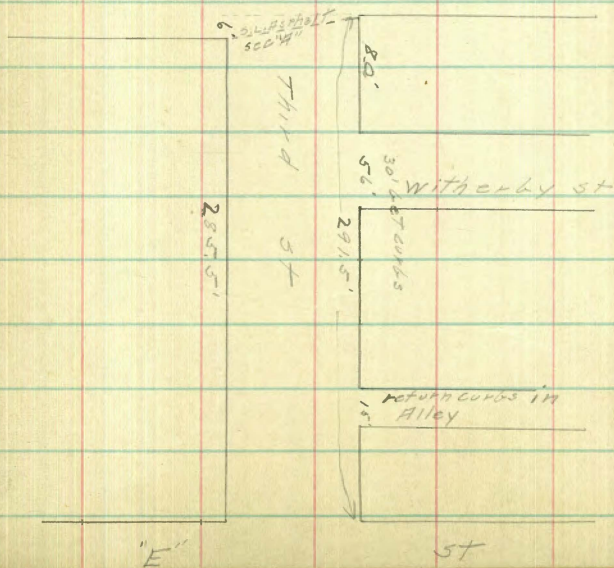
x-section "A"

41.13

w. curb	1.7	39.43
gtr	2.3	38.63
"4"	1.3	39.93
+3.5	1.1	40.03
+5.5	1.0	40.13
M	0.9	40.2
+7.5	0.7	40.4
+9.5	0.8	40.3
"4"	0.7	40.4
gtr	1.4	39.7
E. curb	0.3	40.8

"D"

ST



0+75 on W to 0+31 on E

E. cut	0.6	40.5
gte	1.3	39.8
"	1.3	39.8
+3.5	1.5	39.6
+5.5	1.4	39.7
"	1.5	39.6
+7.5	1.6	39.5
+9.5	1.7	39.4
"	1.8	39.3
gte	2.7	38.4
W. cut	2.1	39.0

0+50 W 0+56 E

W. cut	2.6	38.5
gte	3.2	37.9
"	2.4	38.7
+3.5	2.3	38.8
+5.5	2.2	38.9
"	2.0	39.1
+7.5	2.0	39.1
+9.5	2.0	39.1
"	1.9	39.2
gte	1.7	39.4
E. cut	1.0	40.1

0+75 W 0+81 E

E. cut	1.3	39.8
gte	2.3	38.8
"	2.5	38.6
+3.5	2.5	38.6
+5.5	2.6	38.5
"	2.6	38.6
+7.5	2.8	38.3
+9.5	2.8	38.3
"	2.9	38.2
gte	3.7	37.4
W. cut	3.1	38.0

1+0 W 1+06 E

W. cut	3.6	37.5
gte	4.1	37.0
"	3.6	37.5
+3.5	3.5	37.6
+5.5	3.3	37.8
"	3.3	37.8
+7.5	3.1	38.0
+9.5	3.1	38.0
"	3.1	38.0
gte	3.0	38.1

E. cut Witherby intersection



41.13

1+25 W 1+31 E

V		
cul	2.7	35.4
gtc	3.6	37.5
"	3.7	37.4
+3.5	3.7	37.4
+5.5	3.7	37.4
M	3.8	37.3
+7.5	3.9	37.2
+9.5	4.1	37.0
"	4.3	36.8
gtc	4.9	36.2
W.cul	4.1	37.0

1+35 on W showing drop in curb elev

<del>W.cul</del>	4.3	36.8
<del>gtc</del>	5.3	35.8

1+50 W 1+56 E

W.cul	5.5	35.6
gtc	5.7	35.4
"	5.0	36.1
+3.5	4.9	36.2
+5.5	4.6	36.5
M	4.5	36.6
+7.5	4.3	36.8
+9.5	4.5	36.6
"	4.4	36.7
gtc	4.4	36.7
E.cul	3.4	37.7

41.13

1+75 W 1+91 E

E.cul	4.3	36.8
gtc	5.0	35.8
"	5.1	36.0
+3.5	5.2	35.9
+5.5	5.1	36.0
M	5.2	35.9
+7.5	5.3	35.8
+9.5	5.4	35.7
"	5.6	35.5
gtc	6.2	34.9
W.cul	6.0	35.1

1+85 on W showing raise in curb elev.

W.cul	6.4	34.7
W.cul	5.7	35.4

2+0 W 2+06 E

W.cul	6.2	34.9
gtc	6.8	34.3
"	6.4	34.7
+3.5	6.2	34.9
+5.5	5.9	35.2
M	5.8	35.3
+7.5	5.7	35.4
+9.5	5.8	35.3
"	5.8	35.3
gtc	5.8	35.3
E.cul	5.1	36.0

39

41.13

2+25 W 32+31 E

No. curb account Alley

E. gutter	7.0	34.1
"	6.5	34.6
+3.5	6.6	34.5
+5.5	6.4	34.7
M	6.6	34.5
+7.5	6.6	34.5
+9.5	6.8	34.3
"	7.0	34.1
gtw	7.6	33.5
W. curb	7.0	34.1

2+50 W 2+56 E

W. curb	7.7	33.4
gtw	8.2	32.9
"	7.5	33.6
+3.5	7.5	33.6
+5.5	7.3	33.8
M	7.3	33.8
+7.5	7.1	34.0
+9.5	7.4	33.7
"	7.4	33.7
gtw	7.4	33.7
E. curb	6.6	34.5

41.13

2+85<sup>5</sup> W 32+91<sup>5</sup> 50' E = N. L. E' ST

40

E. curb	7.6	33.5
gtw	8.3	32.8
"	8.2	32.9
+3.5	8.1	33.0
+5.5	8.0	33.1
M	8.2	32.9
+7.5	8.2	32.9
+9.5	8.3	32.8
"	8.3	32.8
gtw	8.8	32.3
W. curb	8.7	32.4

T.P. 1.58 32.98 9.73 31.90

5.1' E' ST

W. curb	7.7	31.3
gtw	2.1	30.9
"	1.5	31.5
+3.5	1.3	31.7
+5.5	1.1	31.9
M	1.0	32.0
+7.5	0.9	32.1
+9.5	0.9	32.1
"	0.8	32.2
gtw	1.3	31.7
E. curb	0.6	32.4

For Intersection see page 63

32.98

0+75 S of E

E. ch	1.2	31.8
gt	2.0	31.0
"	1.5	31.5
+3.5	1.5	31.5
+5.5	1.4	31.6
M	1.6	31.4
+7.5	1.6	31.4
+9.5	1.8	31.2
"	2.1	30.9
gt	2.5	30.5
W. ch	2.2	30.8

0+50

W. ch	2.7	30.3
gt	3.0	30.0
"	2.9	30.6
+3.5	2.4	30.6
+5.5	2.3	30.7
M	2.2	30.8
+7.5	2.1	30.9
+9.5	2.2	30.8
"	2.1	30.9
gt	2.8	30.2
E. ch	1.7	31.3

32.98

0+75

41

E. ch	2.3	30.7
gt	3.1	29.9
"	2.6	30.4
+3.5	2.7	30.3
+5.5	2.7	30.3
M	2.8	30.2
+7.5	2.9	30.1
+9.5	3.1	29.9
"	3.3	29.7
gt	3.6	29.4
W. ch	3.3	29.7

1+0

W. ch	3.8	29.2
gt	4.2	28.8
"	3.6	29.4
+3.5	3.5	29.5
+5.5	3.4	29.6
M	3.2	29.8
+7.5	3.2	29.8
+9.5	3.2	29.8
"	3.1	29.9
gt	3.5	29.5
E. ch	2.9	30.1

32.95

1+25

F. wh	3.5	29.5
gt	4.3	28.7
"A	3.7	29.3
+3.5	3.8	29.2
+5.5	3.8	29.2
M	4.0	29.0
+7.5	4.0	29.0
+9.5	4.0	29.0
"A	4.1	28.9
gt	4.2	28.2
W. wh	4.5	28.5

1+50

W. wh	5.0	28.0
gt	5.3	27.7
"A	4.6	28.4
+3.5	4.6	28.4
+5.5	4.6	28.4
M	4.5	28.5
+7.5	4.4	28.6
+9.5	4.4	28.6
"A	4.4	28.6
gt	4.5	28.5
F. wh	4.1	28.9

32.95

1+75

F. wh	4.6	28.4
gt	5.3	27.7
"A	5.0	28.0
+3.5	5.1	27.9
+5.5	5.0	28.0
M	5.1	27.9
+7.5	5.2	27.8
+9.5	5.2	27.8
"A	5.2	27.8
gt	5.6	27.4
W. wh	5.5	27.5

1+0

W. wh	6.1	26.9
gt	6.7	26.3
"A	6.0	27.0
+3.5	5.8	27.2
+5.5	5.8	27.2
M	5.7	27.3
+7.5	5.6	27.4
+9.5	5.6	27.4
"A	5.7	27.4
gt	6.0	27.0
F. wh	5.2	27.8

42

32.98

2+25

E. Ck	5.8	27.2
gt	6.5	26.5
"	6.1	26.9
+3.5	6.2	26.8
+5.5	6.1	26.9
M	6.3	26.7
+7.5	6.3	26.7
+9.5	6.4	26.6
"	6.6	26.4
gt	7.3	25.7
w. ck	6.6	26.4

2+50

w. ck	7.2	25.8
gt	7.7	25.3
"	7.1	25.9
+3.5	7.0	26.0
+5.5	6.9	26.1
M	6.9	26.1
+7.5	6.7	26.3
+9.5	6.8	26.2
"	6.7	26.3
gt	6.8	26.2
E. Ck	6.4	26.6

32.98

2+75

43

E. Ck	7.0	26.0
gt	7.5	25.5
"	7.2	25.8
+3.5	7.3	25.7
+5.5	7.3	25.7
M	7.4	25.6
+7.5	7.5	25.5
+9.5	7.5	25.5
"	7.5	25.5
gt	8.1	24.9
w. ck	7.8	25.2

3+0 = N.L. F" 5+

w. ck	8.4	24.6
gt	8.5	24.5
"	8.1	24.9
+3.5	8.1	24.9
+5.5	8.1	24.9
M	8.0	25.0
+7.5	7.8	25.2
+9.5	7.7	25.2
"	7.6	25.4
gt	8.1	24.9
E. Ck	7.5	25.5

T. P. 2.45 25.84 9.59 23.39

Note - 2' plank on top and 3' bank curb with asphalt side walk from Sta 0+0 to Sta 1+50 on E. side - no curb on W. side from Sta 0+50 to 0+56, Sta 1+21 to Sta 2+05 and Sta 2+54 to Sta 2+73

25.84

44

25.84 See Page 64 for intersection  
0+0=3.1 "F" St.

E. curb	1.4	244
gtr	2.1	237
"	1.6	242
+3.5	1.8	240
+5.5	1.8	240
"	1.9	239
+7.5	2.0	238
+9.5	2.1	237
"	2.1	237
gtr	2.7	231
W. curb	2.4	234

E. curb	2.4	234
gtr	3.1	227
"	2.4	234
+3.5	2.6	232
+5.5	2.6	232
"	2.7	231
+7.5	2.8	230
+9.5	2.9	229
"	3.0	228
gtr	3.5	223
W. curb	3.3	225

0+75

0+25 5' of "F" St.

W. curb	2.8	230
gtr	3.1	227
"	2.5	233
+3.5	2.5	233
+5.5	2.4	234
"	2.2	236
+7.5	2.2	236
+9.5	2.2	236
"	2.0	238
gtr	2.7	231
E. curb	1.9	239

W. curb	3.7	221
gtr	4.2	216
"	3.5	223
+3.5	3.4	224
+5.5	3.2	226
"	3.1	227
+7.5	3.0	228
+9.5	3.0	228
"	2.9	229
gtr	3.5	223
E. curb	2.7	231

2589

140

E.ck	3.2	22.6
gt	3.9	21.9
"	3.3	22.5
+3.5	3.3	22.5
+5.5	3.9	22.4
"	3.5	22.3
+7.5	3.7	22.1
+9.5	3.8	22.0
"	3.9	21.9
gt	4.8	21.0
W.ck	4.1	21.7

1425

W.ck	4.5	21.3
gt	5.0	20.8
"	4.2	21.6
+3.5	4.2	21.6
+5.5	4.1	21.7
"	3.9	21.9
+7.5	3.8	22.0
+9.5	3.8	22.0
"	3.7	22.1
gt	3.9	21.9
E.ck	3.7	22.1

2589

1450

45

E.ck	4.1	21.7
gt	4.9	20.9
"	4.0	21.8
+3.5	4.3	21.6
+5.5	4.3	21.5
"	4.3	21.5
+7.5	4.5	21.3
+9.5	4.5	21.3
"	4.5	21.3
gt	5.4	20.4
W.ck	4.9	20.9

1475

W.ck	5.3	20.5
gt	5.6	20.2
"	5.0	20.8
+3.5	4.9	20.9
+5.5	4.9	20.9
"	4.8	20.0
+7.5	4.7	21.1
+9.5	4.5	21.3
"	4.4	21.4
gt	4.8	21.0
E.ck	4.3	21.5

25.84

2+0

E. cab	4.8	21.0
gt	5.3	20.5
"	4.8	21.0
+3.5	5.0	20.8
+5.5	5.1	20.7
M	5.1	20.7
+7.5	5.3	20.5
+9.5	5.3	20.5
"	5.4	20.4
gt	6.1	19.7
r. cab	5.8	20.0

2+25

r. cab	6.2	19.6
"	6.9	18.9
gt	5.9	19.9
+3.5	5.7	20.1
+5.5	5.7	20.1
M	5.5	20.3
+7.5	5.5	20.3
+9.5	5.5	20.3
"	5.3	20.5
gt	5.6	20.2
E. cab	5.7	20.6

25.84

2+50

46

E. cab	5.6	20.2
gt	6.1	19.7
"	5.8	20.0
+3.5	5.8	20.0
+5.5	5.9	19.9
M	5.9	19.9
+7.5	6.1	19.7
+9.5	6.1	19.7
"	6.1	19.7
gt	7.0	18.8
r. cab	6.5	19.3

2+75

r. cab	7.0	18.8
gt	7.3	18.6
"	6.5	19.3
+3.5	6.5	19.3
+5.5	6.5	19.3
M	6.4	19.4
+7.5	6.4	19.4
+9.5	6.3	19.5
"	6.2	19.6
gt	6.5	19.3
E. cab	6.0	19.8



2584

340-N.1, " G " ST

E. curb	6.4	19.2		
gtr	6.6	19.2		
"A	6.5	19.3		
+3.5	6.7	19.1		
+5.5	6.8	19.0		
M	6.8	19.0		
+7.5	6.9	18.9		
+9.5	6.9	18.9		
"A	6.9	18.9		
gtr	7.7	18.1		
W. curb	7.4	18.4		
T.P.	2.87	20.35	8.36	17.98

For intersection see Page 66

Note - 3" curb with asphalt sidewalk from Sta 0+50  
 To Sta 1+0 on E. side - asphalt sidewalk on W. side  
 from Sta 0+0 to Sta 1+0 - brick sidewalk from from Sta 2+0  
 To Sta 3+0 on W. side

47

20.35

0+0 = S.L. " G " ST

W. curb	2.9	17.45
gtr	3.1	17.25
"A	2.6	17.7
+3.5 = W. side of m. rail track	2.6	17.7
+5.5 = W. " " "	2.5	17.8
M	2.4	17.9
+7.5 = E. side of track	2.3	18.0
+9.5 = SE of " " "	2.3	18.0
"A	2.2	18.1
gtr	2.4	17.9
E. curb	1.9	18.4

0+25 S. of G, ST

E. curb	2.5	17.8
gtr	3.1	17.2
"A	2.7	17.6
+3.5	2.8	17.5
+5.5	2.8	17.5
M	2.9	17.4
+7.5	3.0	17.3
+9.5	3.0	17.3
"A	3.0	17.3
gtr	3.7	16.7
W. curb	3.4	16.9

2035

0450

W. orb	3.8	16.5
gtv	4.3	16.0
"	3.4	16.9
+3.5	3.5	16.8
+5.5	3.5	16.8
M	3.4	16.9
+7.5	3.3	17.0
+9.5	3.3	17.0
"	3.1	17.2
gtv	3.9	16.4
E. orb	2.9	17.4

0475

E. orb	3.5	16.8
gtv	4.0	16.3
"	3.6	16.7
+3.5	3.8	16.5
+5.5	3.7	16.6
M	3.5	16.5
+7.5	4.0	16.3
+9.5	4.0	16.3
"	4.1	16.2
gtv	4.7	15.6
W. orb	4.3	16.0

2035

170

48

W. orb	4.7	15.6
gtv	5.3	15.0
"	4.5	15.8
+3.5	4.4	15.9
+5.5	4.4	15.9
M	4.3	16.0
+7.5	4.2	16.1
+9.5	4.2	16.1
"	4.1	16.2
gtv	4.7	15.6
E. orb	4.0	16.3

1725

E. orb	4.5	15.8
gtv	4.8	15.5
"	4.6	15.7
+3.5	4.8	15.5
+5.5	4.8	15.5
M	4.8	15.5
+7.5	5.0	15.3
+9.5	4.9	15.4
"	5.0	15.3
gtv	5.7	14.6
W. orb	5.2	15.1

2035

1+50

W. orb	5.6	14.7
gt	6.0	14.3
"4	5.4	14.9
+3.5	5.4	14.9
+5.5	5.5	14.5
M	5.2	15.1
+7.5	5.3	15.0
+9.5	5.3	15.0
"4	5.0	15.3
gt	5.4	14.9
E. orb	4.9	15.4

1+75

E. orb	5.4	14.9
gt	6.0	14.3
"4	5.6	14.7
+3.5	5.8	14.5
+5.5	5.7	14.6
M	5.7	14.6
+7.5	6.0	14.3
+9.5	6.0	14.3
"4	6.0	14.3
gt	6.4	13.9
W. orb	6.1	14.2

2035

2+0

49

W. orb	6.6	13.7
gt	7.1	13.2
"4	6.3	14.0
+3.5	6.3	14.0
+5.5	6.5	13.8
M	6.3	14.0
+7.5	6.2	14.1
+9.5	6.3	14.0
"4	6.0	14.3
gt	6.4	13.9
E. orb	5.9	14.4

2+25

E. orb	6.4	13.9
gt	7.2	13.1
"4	6.5	13.5
+3.5	6.7	13.6
+5.5	6.8	13.6
M	6.9	13.4
+7.5	6.9	13.4
+9.5	7.0	13.3
"4	7.1	13.2
gt	7.6	12.7
W. orb	7.1	13.2

N. curb	7.5	12.8
gtr	8.2	12.1
"	7.9	12.9
+3.5	7.4	12.9
+5.5	7.3	13.0
M	7.2	13.1
+7.5	7.2	13.1
+9.5	7.2	13.1
"	7.0	13.3
gtr	7.5	12.8
E. curb	6.9	13.4

E. curb	7.4	12.9
gtr	7.9	12.4
"	7.9	12.9
+3.5	7.7	12.6
+5.5	7.7	12.6
M	7.7	12.6
+7.5	7.6	12.7
+9.5	7.7	12.6
"	7.7	12.6
gtr	8.2	12.1
N. curb	8.0	12.3

N. curb	8.4	11.9
gtr	9.1	11.2
"	8.2	12.1
+6 = 2nd of N. rail N. Track	8.1	12.2
+8 = N. " " "	8.1	12.2
M	8.2	12.1
"	8.0	12.3
+1 = E. rail of E. Track	8.0	12.3
+3 = 2nd of E. rail " "	7.8	12.5
gtr	8.9	11.4
E. curb	7.8	12.5

E. curb	1.7	11.96
gtr	2.7	10.96
"	1.8	11.86
M	1.9	11.76
gtr	2.3	11.36
gtr	2.8	10.86
N. curb	2.2	11.46

Note - sidewalk in bad condition from  
sta 2+50 to sta 2+65 on W. side

13.66  
04255 of "H" ST

w. ab	2.6	11.06
gt	3.3	10.36
"	3.2	10.46
M	2.9	10.76
"	2.4	11.26
gt	3.0	10.66
E. crb	2.1	11.56

0450

E. crb	2.5	11.16
gt	3.0	10.66
"	3.2	10.46
M	3.6	10.06
"	3.6	10.06
gt	3.7	9.96
w. crb	2.9	10.76

0475

w. ab	3.4	10.26
gt	4.1	9.56
"	3.9	9.76
M	4.3	9.36
"	3.6	10.06
gt	3.5	10.16
E. crb	2.9	10.76

140

E. crb	3.2	10.46
gt	4.2	9.46
"	3.9	9.76
M	4.4	9.26
"	4.3	9.36
gt	4.4	9.26
w. crb	3.7	9.96

W. crk	4.1	9.56
gtr	4.9	8.76
"	4.5	9.16
M	4.6	9.06
"	4.2	9.46
gtr	4.7	8.96
E. crk	3.6	10.06

E. crk	4.0	9.66
gtr	5.0	8.66
"	4.7	8.96
M	5.0	8.66
"	4.9	8.76
gtr	4.9	8.76
W. crk	4.5	9.16

W. crk	4.8	8.86
gtr	5.5	8.16
"	5.3	8.36
M	5.2	8.46
"	5.0	8.66
crk	5.3	8.36
E. crk	4.9	9.26

E. crk	4.8	8.86
gtr	5.5	8.16
"	5.1	8.56
M	5.4	8.26
"	5.4	8.26
gtr	5.8	7.86
W. crk	5.2	8.46

	13.66		
	2+25		
W.urb	5.6	8.06	
gte	6.1	7.56	
"4	5.7	7.96	
M	5.7	7.96	
"4	5.5	8.16	
gte	5.8	2.86	
E.urb	5.2	8.46	

2+50

E.urb	5.5	8.16
gte	6.4	7.26
"4	5.7	7.96
*		
M	5.9	7.76
"4	6.0	7.66
gte	6.5	7.16
W.urb	6.0	7.66

	13.66		
	2+75		
W.urb	6.3	7.36	
gte	6.9	6.96	
"4	6.3	7.36	
M	6.0	7.66	
"4	6.1	7.56	
gte	6.7	6.96	
E.urb	5.8	7.86	

3+0 = N.L. I" 5+

E.urb	6.2	7.46		
gte	6.8	6.86		
"4	6.4	7.26		
M	6.2	7.46		
"4	6.5	7.16		
gte	7.2	6.46		
W.urb	6.7	6.96		
T.P.	1.79	8.26	7.19	6.47.

## N. curb I

W.L.	1.7	6.56
W. O.P.L.	2.0	6.26
"	1.3	6.96
M	1.1	7.16
"	1.0	7.26
E. O.P.L.	1.7	6.56
E.L.	1.1	7.16

## N "4

E.L.	1.2	7.06
O.P.L.	1.6	6.66
"	1.1	7.16
M	1.1	7.16
"	1.4	6.86
O.P.L.	2.0	6.26
W.L.	1.9	6.36

## Center

W.L.	2.1	6.16
O.P.L.	2.1	6.16
"	1.9	6.86
M	1.6	6.66
"	1.9	6.86
O.P.L.	1.8	6.46
E.L.	1.0	7.26

## S "4

E.L.	1.4	6.86
O.P.L.	1.8	6.46
"	1.4	6.86
M	1.5	6.76
"	1.7	6.56
O.P.L.	2.2	6.06
W.L.	2.1	6.16



## SCORE

W.L.	2.0	6.26
cel. L.	2.3	5.96
"	1.9	6.36
M	1.8	6.46
"	1.7	6.56
cel. L.	2.1	6.16
E. L.	2.0	6.26

0+0 = S.L. "I" ST

E. cel	1.8	6.46
gt	2.4	5.86
"	2.1	6.16
M	2.0	6.26
"	2.1	6.16
gt	2.3	5.96
W. cel	1.8	6.46

Note. Asphalt side walk E. side from Sta 0+0 to Sta 0+50  
and from Sta 1+50 to 3+0 - Asphalt side walk on W. side  
from 0+50 to 1+75

0+25 S. of "I"

8.26

W. cel	2.2	6.06
gt	2.9	5.36
"	2.4	5.86
M	2.2	6.06
"	2.3	5.96
gt	2.6	5.66
E. cel	2.2	6.06

0+50

E. cel	2.5	5.76
gt	3.2	5.06
"	2.7	5.56
M	2.6	5.66
"	2.7	5.56
gt	3.3	4.96
W. cel	2.6	5.66

8.26

0.75

w. orb	2.9	5.36
gtr	3.6	4.66
"A	3.0	5.26
M	3.0	5.26
"A	3.2	5.06
gtr	3.5	4.76
E. orb	2.9	5.36

1.0

E. orb	3.3	4.96
gtr	3.8	4.46
"A	3.9	4.36
M	3.3	4.96
"A	3.4	4.86
gtr	3.9	4.36
w. orb	3.3	4.96

9.26

1.25

w. orb	3.7	4.56
gtr	4.4	3.86
"A	3.8	4.46
M	3.7	4.56
"A	4.0	4.26
gtr	4.4	3.86
E. orb	3.7	4.56

1.50

E. orb	4.0	4.26
gtr	4.6	3.66
"A	4.5	3.76
M	4.2	4.06
"A	4.3	3.96
gtr	4.7	3.56
w. orb	4.1	4.16

8.26

1775

W. orb	4.5	3.76
gte	5.2	3.06
"4	4.6	3.66
M	4.5	3.76
"4	4.7	3.56
gte	4.9	3.36
E. orb	4.4	3.86

2+0

E. orb	4.8	3.46
gte	5.2	3.06
"4	5.1	3.16
M	4.8	3.46
"4	5.0	3.26
gte	5.6	2.66
W. orb	4.8	3.46

826

2+25

57

W. orb	5.2	3.06
gte	5.8	2.46
"4	5.2	3.06
M	5.1	3.16
"4	5.3	2.96
gte	5.3	2.96
E. orb	5.2	3.06

2+50

E. orb	5.6	2.66
gte	5.8	2.46
"4	5.9	2.36
M	5.5	2.76
"4	5.6	2.66
gte	5.9	2.36
W. orb	5.5	2.76

8.26

2+75

w. cab	5.9	2.36
gtc	6.2	2.06
"	6.0	2.26
M	5.7	2.56
"	6.1	2.16
gtc	6.0	2.26
E. cab	5.9	2.36

3+0 = N.L. "J" 5T

E. cab	6.2	2.06
gtc	6.4	1.86
"	6.4	1.86
M	6.1	2.16
"	6.3	1.96
gtc	6.7	1.56
w. cab	6.3	1.96

8.26

N. curb

N.L.	6.6	1.66
cab L	6.9	1.36
"	6.9	1.86
M	6.1	2.16
"	6.5	1.76
cab L	6.7	1.56
E.L.	6.5	1.76

N "A"

E.L.	6.6	1.66
cab L	6.6	1.66
"	6.5	1.76
M	6.1	2.16
"	6.4	1.86
cab L	7.0	1.26
N.L.	6.6	1.66

826  
Center

M.L.	6.6	166
Col. L.	7.0	126
"A	6.4	186
M	6.8	196
"A	6.6	166
Col. L.	6.6	166
E.L.	6.5	176

3 "A

E.L.	6.8	146
Col. L.	6.7	156
"A	6.7	156
M	6.6	166
"A	6.7	156
Col. L.	7.2	106
M.L.	7.0	126

826  
S. C. 146

59

M.L.	7.3	896
Col. L.	7.3	096
"A	6.7	156
M	6.6	166
"A	6.8	146
Col. L.	6.9	136
E.L.	6.8	146

5.4 "J" ST

E	6.6	1.66		
Col.	6.8	1.46		
"A	7.0	126		
M	6.6	166		
"A	7.0	126		
Col.	6.8	1.46		
M	6.5	176		
T.P.	3.99	5.47	6.78	1.48

Note - Third St not graded or curbed from "J" to "K" St  
 Fig. E.S.W. returns in. 5.47

0+75' end of "J" St.

0+75'

W	4.0	1.5
Cur	4.4	1.07
"A	4.3	1.2
M	4.3	1.2
"A	4.2	1.3
Cur	4.1	1.37
E	3.7	1.8

0+50

F	3.8	1.67
Cur	4.2	1.3
"A	4.4	1.1
M	4.2	1.3
"A	4.4	1.1
Cur	4.8	.67
W	4.2	1.3

W	4.5	1.0
Cur	4.8	0.7
"A	4.8	0.7
M	4.3	1.2
"A	4.9	0.6
Cur	4.3	1.2
E	4.1	1.4

1+0

F	3.6	1.9
Cur	4.3	1.2
"A	4.6	0.9
M	4.9	0.6
"A	5.1	0.4
Cur	5.0	0.5
W	4.8	0.7

W	4.7	0.8
crb	5.0	0.5
"4	5.1	0.4
M	4.9	0.6
"4	4.7	0.8
crb	4.6	0.9
E	4.0	1.5

E	4.0	1.5
crb	4.2	1.3
"4	5.0	0.5
M	4.8	0.7
"4	5.2	0.3
crb	5.3	0.2
W	5.1	0.4

W	5.0	0.5
crb	5.3	0.2
"4	5.3	0.2
M	5.0	0.5
"4	5.0	0.5
crb	4.7	0.8
E	4.3	1.2

E	4.1	1.4
crb	4.9	0.6
"4	5.0	0.5
M	4.9	0.6
"4	5.3	0.2
crb	5.5	0.0
W	5.0	0.5

N	5.1	0.4
cb	5.4	0.1
"4	5.5	0.0
M	4.9	0.6
"4	4.9	0.6
cb	4.4	1.1
E	4.1	1.4

- E	4.3	1.2
cb	4.5	1.0
+4	5.5	0.0
"4	5.1	0.4
M	5.0	0.5
"4	5.5	0.0
cb	5.7	-0.2
N	5.6	-0.1

N	5.6	-0.1
cb	5.7	-0.2
"4	5.5	0.0
M	5.2	0.3
"4	5.4	0.1
+5	5.5	0.0
cb	4.3	1.2
E	4.1	1.4

E	4.4	1.1
cb	5.1	0.4
"4	5.4	0.1
M	5.3	0.2
"4	5.3	0.2
cb	5.3	0.2
N	5.5	0.0



B.M. 5.4 34.30 "E" 23.39

B.M. 10.91 34.30

N. curb "E" st

W.L. 2.3 32.0

curb L. 2.1 32.2

"A" 1.7 32.6

+3.5 1.6 32.7

+5.5 1.6 32.7

M 1.5 32.8

+7.5 1.4 32.9

+9.5 1.4 32.9

"A" 1.4 32.9

curb L. 1.8 32.5

E.L. 1.5 32.8

N. "A"

E.L. 1.8 32.5

curb L. 1.8 32.5

"A" 1.4 32.9

+3.5 1.6 32.7

+5.5 1.6 32.7

M 1.8 32.6

+7.5 1.7 32.6

+9.5 1.7 32.6

"A" 1.9 32.4

curb L. 1.7 32.6

W.L. 1.9 32.4

center

W.L. 2.1 32.2

curb L. 1.9 32.4

"A" 1.7 32.6

+3.5 1.8 32.5

+5.5 1.9 32.4

M 1.9 32.4

+7.5 1.7 32.6

+9.5 1.9 32.4

"A" 1.7 32.6

curb L. 2.0 32.3

E.L. 1.8 32.5

S "A"

E.L. 2.0 32.3

curb L. 2.2 32.1

"A" 1.8 32.5

+3.5 1.9 32.4

+5.5 1.9 32.4

M 1.9 32.4

+7.5 2.1 32.2

+9.5 2.0 32.3

"A" 1.9 32.4

curb L. 2.4 31.9

W.L. 2.6 31.7

3430

S. CURVE "F" ST

W.L.	3.3	31.0
cb.L.	3.1	31.2
"A	2.5	31.8
+3.5	2.3	32.0
+5.5	2.2	32.1
M	2.1	32.2
+7.5	2.1	32.2
+9.5	2.1	32.2
"A	1.9	32.4
cb.L.	2.4	31.9
E.L.	2.1	32.2

1-section for intersection of Third &amp; F" see Page 43

B.M. 2 M 3<sup>rd</sup> 2 "F" 23.37

B.M. 4.11 27.50

N. CURVE "F" ST

W.L.	3.3	24.2
cb.L.	3.1	24.4
"A	2.6	24.9
+3.5	2.7	24.8
+5.5	2.8	24.7
M	2.7	24.8
+7.5	2.6	24.9
+9.5	2.6	24.9
"A	2.5	25.0
cb.L.	2.9	24.6
E.L.	2.5	25.0

N "A

E.L.	2.4	25.1
cb.L.	2.9	24.6
"A	2.7	24.8
+3.5	2.7	24.8
+5.5	2.8	24.7
M	2.9	24.6
+7.5	3.0	24.5
+9.5	2.9	24.6
"A	2.6	24.9
cb.L.	3.0	24.5
W.L.	3.3	24.2

Center

N.L.	3.5	24.0
Crk. L.	3.2	24.3
"A	2.9	24.6
+3.5	3.1	24.4
+5.5	3.1	24.4
M	3.1	24.4
+7.5	2.9	24.6
+9.5	2.9	24.6
"A	2.8	24.7
Crk. L.	2.8	24.7
E. L.	2.3	25.2

5 "A

E. L.	2.9	24.6
Crk. L.	3.2	24.3
"A	3.0	24.5
+3.5	3.1	24.4
+5.5	3.1	24.4
M	3.3	24.2
+7.5	3.3	24.2
+9.5	3.2	24.3
"A	2.9	24.6
Crk. L.	3.4	24.1
N. L.	3.7	23.8

3. CORK "F" 5+

N.L.	4.2	23.3
Crk. L.	4.0	23.5
"A	3.9	24.1
+3.5	3.9	24.1
+5.5	3.4	24.1
M	3.9	24.1
+7.5	3.2	24.3
+9.5	3.2	24.3
"A	3.2	24.3
Crk. L.	3.5	24.0
E. L.	3.4	24.1

B.M. S.W. Third & G

17.98

B.M. 290 22.38

N Curb G

W.L.	4.6	17.8
Curb L.	4.3	18.1
"	3.6	18.8
+3.5	3.5	18.9
+5.5	3.6	18.8
M	3.5	18.9
+7.5	3.5	18.9
+9.5	3.4	19.0
"	3.2	19.2
Curb L.	3.4	19.0
E.L.	3.4	19.0

N "4

E.L.	3.4	19.0
Curb L.	3.6	18.8
"	3.4	19.0
+3.5	3.6	18.8
+5.5	3.6	18.8
M	3.8	18.6
+7.5	3.8	18.6
+9.5	3.7	18.7
"	3.7	18.7
Curb L.	4.7	18.2
W.L.	4.5	17.9

2238

Center

66

W.L.	4.5	17.9
Curb L.	4.3	18.1
"	3.8	18.6
+3.5	3.9	18.5
+5.5	4.0	18.4
M	3.9	18.5
+7.5	3.8	18.6
+9.5	3.7	18.7
"	3.6	18.8
Curb L.	3.8	18.6
E.L.	3.7	18.7

S "4

E.L.	3.9	18.5
Curb L.	3.9	18.5
"	3.7	18.7
+3.5	3.9	18.5
+5.5	3.9	18.5
M	3.9	18.5
+7.5	4.2	18.2
+9.5	4.1	18.3
"	4.1	18.3
Curb L.	4.6	17.8
W.L.	4.9	17.5

S. cork 6"

M <sub>1</sub>	5.3	17.1
C <sub>1</sub>	5.0	17.4
"A	4.9	18.0
+3.5	4.4	18.0
+5.5	4.3	18.1
M	4.2	18.2
+7.5	4.1	18.3
+9.5	4.1	18.3
"A	4.0	18.4
C <sub>1</sub>	4.2	18.2
F <sub>1</sub>	4.0	18.4

117  
110  
Dunlap  
Shaw  
Dunlap

Levels on N. of E" st at foot of slope from E. L.  
16<sup>th</sup> to 100' E of 16<sup>th</sup>. Levels taken at same  
distances as original x-sections. See N 290 P 34

B.M. Brass Plg Sixteenth & D" 55.89

B.M. 3.15 59.04

E. L. 16<sup>th</sup>

0+22 N of N. L. E" st 10.3

0+30 " " " " 10.6

0+05 E of 16<sup>th</sup>

0+19 N of N. L. E" st 7.2

0+30 " " " " " 7.4

0+10 E of 16<sup>th</sup>

0+19 " " " " " 6.3

0+30 " " " " " 5.3

0+30

0+13 " " " " " 4.8

0+15 " " " = S. L. Church 4.8

0+35 E

0+13 N of N. L. E" st 4.7

0+15 " " " = S. L. Church 4.7

0+45 E

0+13 " " " " " 4.5

0+15 " " " = S. L. Church 4.5

0+75

0+13 " " " " " 3.5

0+30 " " " " " 4.0

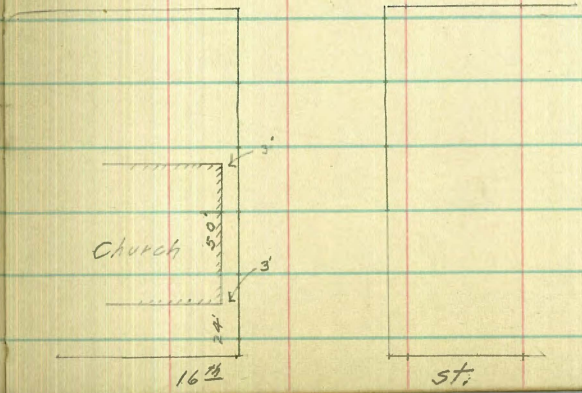
1+0 E of 16<sup>th</sup> st.

0+15 " " " " " 0.1

0+30 " " " " " 1.3

17<sup>th</sup>

5+



Profile on Cr. of 15' strip  
Blk 8 of Kimball's plat.

B.M.	206	148.97	146.413	N.W. 1/4
0+00 = E.L. 2A <sup>th</sup> St.		157	137.8	
+25		84	140.1	
+50		70	141.5	
1		48	143.7	
+50		29	145.6	
T.P.	1296	161.20	0.23	148.24
2		126	148.6	
+50		104	150.8	
3		89	152.3	
+50		75	153.7	
A		54	155.8	
+50		28	158.4	
5		07	160.5	
T.P.	761	168.59	0.22	160.98
+50		35	163.1	
+75		44	164.2	
6		44	164.2	
B.M. 25 <sup>th</sup> St.		11.65	156.94	

Cross-Section of a 20' strip across 'E' St in 15<sup>th</sup>  
ctr of strip being 15' East of line of 15<sup>th</sup> St

69  
Davis  
William  
Churchman

518	48.42	43.24	B.M. N.W. 1/4 E
			25' No. of No. line 'E'
W		0.1	42.3
12		1.0	47.4
C		8.0	40.4
17		9.6	38.9
E		9.2	39.2
			25' No. of E
E		10.1	38.3
C		8.6	39.9
W		1.5	46.9
			10' No. of E
W		5.5	42.9
C		9.1	39.8
+5		10.0	38.4
E		9.3	39.1

No. line E St  
48.42

E 9.4 39.0

C 85 39.9

W 85 39.9

No. Cl

W 84 40.0

C 90 39.4

E 86 39.8

No. 4

E 87 39.7

C 94 39.0

W 88 39.6

Chr "E" St

W 93 39.1

V 96 38.8

E 10.2 38.2

So. 4  
48.42

E 10.5 37.9

+8 10.3 38.1

C 9.6 38.8

W 9.4 41.0

So. Cl.

W 7.1 41.3

+4 7.7 38.7

C 9.6 38.8

+2 10.2 38.0

E 10.5 37.9

So. line E

E 10.7 37.7

+8 10.3 38.1

C 9.7 38.7

+2 10.2 38.2

+7 7.7 38.7

W 7.2 41.2



20' S. of Seline "E"  
48.47

W	8.2	40.2
+5	10.5	37.9
+8	10.5	37.9
C	9.8	38.6
+2	10.5	37.9
E	11.0	37.4

38' S.

E	10.6	37.8
O	9.9	38.5
+2	10.8	37.6
+6	10.5	37.9
W	8.0	40.4

X sect. E street 23<sup>rd</sup> to 25<sup>th</sup>  
 H.T. Rod Elev.

Sta. 1193 169.35 1574.2

East line 23<sup>rd</sup>

No. gutter

11.3 158.0

1/4

10.9 158.4

C

10.4 158.9

1/4

10.6 158.7

So. gutter

10.8 158.5

50' East

So. gutter

7.4 161.9

1/4

7.2 162.1

C

6.8 162.5

1/4

7.2 162.1

No. gutter

7.8 161.5

Apr 11/10  
 169.35  
 72  
 Taylor

100' East

No. gutter

Cement

3.8 165.5

1/4

3.3 166.0

C

3.1 166.2

1/4

3.4 165.9

So. gutter

3.7 165.6

150' E (West line 24<sup>th</sup>)  
 11.62 180.38 0.69 168.76

So. gutter

11.20 169.2

1/4

11.0 169.4

C

10.6 169.8

1/4

10.8 169.6

No. gutter Cement.

11.1 169.3

180,38

west cb.

no. line (gutter)	10.7	169.7	no line
no. gutter	10.6	169.8	gutter
1/4	10.3	170.1	1/4
Center	10.2	170.2	C
1/4	10.4	170.0	1/4
no gutter	10.8	169.6	gutter
no line (gutter)	11.1	169.3	no line
no			west 1/4
no	10.5	169.9	no line
gutter	10.2	170.2	no line
1/4	10.0	170.4	gutter
C	9.9	170.5	1/4
1/4	9.9	170.5	C
gutter	9.8	170.6	1/4
no line	9.6	170.8	gutter

180,38

78

Center 24<sup>th</sup>

9.2	171.2	no line
9.5	170.9	gutter
9.5	170.9	1/4
9.8	170.6	C
9.8	170.6	1/4
9.9	170.5	gutter
10.1	170.3	no line
		East 1/4
9.9	170.5	no line
9.6	170.8	gutter
9.5	170.9	1/4
9.4	171.0	C
9.2	171.2	1/4
9.3	171.1	gutter
9.0	171.4	no line

East cb.

50' East

So. line (gutter)	9.8	170.6
Gutter	9.6	170.8
1/4	9.4	171.0
Center	9.2	171.2
1/4	9.0	171.4
gutter	9.1	171.3
No. line (gutter)	9.0	171.4
East line 24 <sup>th</sup> X		
so. gutter	9.2	171.2
1/4	9.3	171.1
C	8.9	171.5
1/4	8.8	171.6
no gutter	8.8	171.6

no gutter

1/4

C

1/4

so gutter

so gutter

1/4

C

1/4

gutter

100' East

7.1 173.3

7.0 173.4

7.3 173.1

7.1 173.3

7.3 173.1

5.1 175.3

4.8 175.6

5.1 175.3

4.9 175.5

5.1 175.3

180.38

150' East.

no. line	2.0	178.4
no. cb.	2.6	177.8
gutter	3.5	176.9
1/4	2.9	177.5
C	2.8	177.6
1/4	2.6	177.8
gutter	3.3	177.1
no. cb.	2.7	177.7
no. line	2.5	177.9
	200' East	
no. gutter	1.0	179.4
1/4	1.1	179.3
C	0.8	179.6
1/4	1.1	179.3
gutter	1.3	179.1
no. cb.	0.7	179.7

188.29

75

250' East

no. cb	7.5	180.8
no. gutter	8.1	180.2
1/4	7.7	180.6
C	7.5	180.8
1/4	7.9	180.4
no. gutter	8.0	180.3

300' East

no. gutter	6.7	181.6
1/4	6.7	181.6
C	6.4	181.9
1/4	6.5	181.8
no. gutter	6.8	181.5

350' East

no. gutter	6.0	182.3
1/4	5.6	182.7
C	5.5	182.8
1/4	5.6	182.7
no. gutter	6.1	182.2
so. cb.	5.9	182.4
so. line	5.3	183.0

400' East

so. line	4.4	183.9
so. cb.	4.7	183.6
gutter	5.1	183.2
1/4	4.5	183.8
C	4.5	183.8
1/4	4.7	183.6
no. gutter	5.1	183.2

450' East

no. gutter	4.1	184.2
1/4	3.9	184.4
C	3.7	184.6
1/4	3.9	184.4
gutter	4.3	184.0
so. cb.	3.7	184.6
so. line	3.7	184.6

500' East

no. gutter	4.1	184.2
1/4	3.9	184.4
C	3.6	184.7
1/4	3.6	184.7
no. gutter	3.8	184.5

188.29

77

550' East.

no. gutter	3.9	184.4
1/4	4.1	184.2
c	3.9	184.4
1/4	4.2	184.1
no. gutter	4.3	184.0

600' East (west line of the)

no. gutter	4.7	183.6
1/4	4.5	183.8
c	4.2	184.1
1/4	4.2	184.1
no. gutter	4.0	184.3

Staked out 32nd street  
F street both sides for street

Sto.

0+00 So. line C west side  
32nd

+50

1+00

+50

2+00

+50

3+00 No. line C

+80

0+00 So. line D

+50

1+00

+50

2+00

+50

3+00 No. line E,

From C Street to  
Department, May 17/10  
star

Lehman  
Barb 78  
Taylor

0+00 So. line E

+75

1+00

2+00

+50

3+00 No. line F



Cont. from page 78

Sta

0+00 So. line C on East  
line 32<sup>nd</sup>.

+50

1+00

+50

2+00

+50

3+00 No. line D

0+00 No. line D

+50

1+00

+50

2+00

+50

3+00 No. line E

Sta.

0+00. So. line E

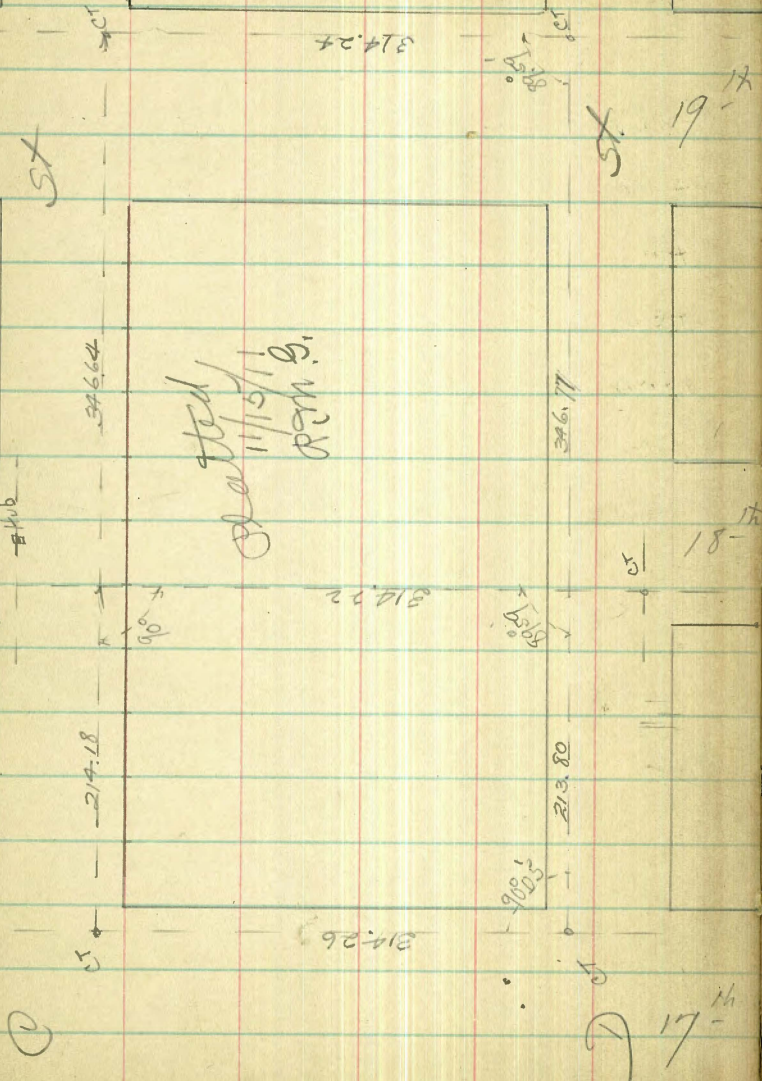
1+00

+40

2+30

3+00 No. line F

11/10/11  
11/11/11  
Haich  
more  
Half Survey for  
Opening of 18<sup>th</sup> St.  
C to D



#400

Culvert measurement  
 on Grape Street between  
 31<sup>st</sup> and Fern Sts,  
 $\frac{1}{4}$  Hatch  
 $\frac{4}{12}$  Trench  
 Hall

31<sup>st</sup>

ST

26 1/2

Grape

33 10

227.0 Elev.  
41 3

Elev. 281.0

38 10

Elev. 231.4

Elev. 224.7

ST  
to Fern

TRAVERSE TABLE FOR TRANSIT BOOK.

From 1° to 90° for a distance of 100.

Degrees.	DEGREES.		¼ DEGREE.		½ DEGREE.		¾ DEGREE.		Degrees.
	Lat.	Dep.	Lat.	Dep.	Lat.	Dep.	Lat.	Dep.	
0			100.00	0.44	100.00	0.87	99.99	1.31	89
1	99.98	1.75	99.98	2.18	99.97	2.62	99.95	3.05	88
2	99.94	3.49	99.92	3.93	99.91	4.36	99.88	4.80	87
3	99.86	5.23	99.84	5.67	99.81	6.10	99.79	6.54	86
4	99.76	6.98	99.73	7.41	99.69	7.85	99.66	8.28	85
5	99.62	8.72	99.58	9.15	99.54	9.58	99.50	10.02	84
6	99.45	10.45	99.41	10.89	99.36	11.32	99.31	11.75	83
7	99.25	12.19	99.20	12.62	99.14	13.05	99.09	13.49	82
8	99.03	13.92	98.97	14.35	98.90	14.78	98.84	15.21	81
9	98.77	15.64	98.70	16.07	98.63	16.50	98.56	16.93	80
10	98.48	17.36	98.40	17.79	98.33	18.22	98.25	18.65	79
11	98.16	19.08	98.08	19.51	97.99	19.94	97.90	20.36	78
12	97.81	20.79	97.72	21.22	97.63	21.64	97.53	22.07	77
13	97.44	22.50	97.34	22.92	97.24	23.34	97.13	23.77	76
14	97.03	24.19	96.92	24.62	96.81	25.04	96.70	25.46	75
15	96.59	25.88	96.48	26.30	96.36	26.72	96.25	27.14	74
16	96.13	27.56	96.00	27.98	95.88	28.40	95.76	28.82	73
17	95.63	29.24	95.50	29.65	95.37	30.07	95.24	30.49	72
18	95.11	30.90	94.97	31.32	94.83	31.73	94.69	32.14	71
19	94.55	32.56	94.41	32.97	94.26	33.38	94.12	33.79	70
20	93.97	34.20	93.82	34.61	93.67	35.02	93.51	35.43	69
21	93.36	35.84	93.20	36.24	93.04	36.65	92.88	37.06	68
22	92.72	37.46	92.55	37.86	92.39	38.27	92.22	38.67	67
23	92.05	39.07	91.88	39.47	91.71	39.87	91.53	40.27	66
24	91.35	40.67	91.18	41.07	91.00	41.47	90.81	41.87	65
25	90.63	42.26	90.45	42.66	90.26	43.05	90.07	43.44	64
26	89.88	43.84	89.69	44.23	89.49	44.62	89.30	45.01	63
27	89.10	45.40	88.90	45.79	88.70	46.17	88.50	46.56	62
28	88.29	46.95	88.09	47.33	87.88	47.72	87.67	48.10	61
29	87.46	48.48	87.25	48.86	87.04	49.24	86.82	49.62	60
30	86.60	50.00	86.38	50.38	86.16	50.75	85.94	51.13	59
31	85.72	51.50	85.49	51.88	85.26	52.25	85.04	52.62	58
32	84.80	52.99	84.57	53.36	84.34	53.73	84.10	54.10	57
33	83.87	54.46	83.63	54.83	83.39	55.19	83.15	55.56	56
34	82.90	55.92	82.66	56.28	82.41	56.64	82.16	57.00	55
35	81.92	57.36	81.66	57.71	81.41	58.07	81.16	58.42	54
36	80.90	58.78	80.64	59.13	80.39	59.48	80.13	59.83	53
37	79.86	60.18	79.60	60.53	79.34	60.88	79.07	61.22	52
38	78.80	61.57	78.53	61.91	78.26	62.25	77.99	62.59	51
39	77.71	62.93	77.44	63.27	77.16	63.61	76.88	63.94	50
40	76.60	64.28	76.32	64.61	76.04	64.94	75.76	65.28	49
41	75.47	65.61	75.18	65.93	74.90	66.26	74.61	66.59	48
42	74.31	66.91	74.02	67.24	73.73	67.56	73.43	67.88	47
43	73.14	68.20	72.84	68.52	72.54	68.84	72.24	69.15	46
44	71.93	69.47	71.63	69.78	71.33	70.09	71.02	70.40	45
45	70.71	70.71							
Degrees.	Dep.	Lat.	Dep.	Lat.	Dep.	Lat.	Dep.	Lat.	Degrees.
Degrees.	DEGREES.		¼ DEGREE.		½ DEGREE.		¾ DEGREE.		Degrees.

Handwritten notes on the left page:  
2.0  
3.0  
716  
40  
676