

House Location

DIETZGEN
MINING

MINING
TRANSIT BOOK

No. 422

F. B. 580

EUGENE DIETZGEN CO.

DRAWING MATERIALS, MATHEMATICAL and
SURVEYING INSTRUMENTS

Chicago New York San Francisco New Orleans Pittsburg Toronto

Distances from Center of Roadway for Cross-Sectioning
Roadway 16 feet wide. Side Slopes 1 on 1.
For Single Track Embankment.

H	0	.1	.2	.3	.4	.5	.6	.7	.8	.9	H
0	8.0	8.1	8.2	8.3	8.4	8.5	8.6	8.7	8.8	8.9	0
1	9.0	9.1	9.2	9.3	9.4	9.5	9.6	9.7	9.8	9.9	1
2	10.0	10.1	10.2	10.3	10.4	10.5	10.6	10.7	10.8	10.9	2
3	11.0	11.1	11.2	11.3	11.4	11.5	11.6	11.7	11.8	11.9	3
4	12.0	12.1	12.2	12.3	12.4	12.5	12.6	12.7	12.8	12.9	4
5	13.0	13.1	13.2	13.3	13.4	13.5	13.6	13.7	13.8	13.9	5
6	14.0	14.1	14.2	14.3	14.4	14.5	14.6	14.7	14.8	14.9	6
7	15.0	15.1	15.2	15.3	15.4	15.5	15.6	15.7	15.8	15.9	7
8	16.0	16.1	16.2	16.3	16.4	16.5	16.6	16.7	16.8	16.9	8
9	17.0	17.1	17.2	17.3	17.4	17.5	17.6	17.7	17.8	17.9	9
10	18.0	18.1	18.2	18.3	18.4	18.5	18.6	18.7	18.8	18.9	10
11	19.0	19.1	19.2	19.3	19.4	19.5	19.6	19.7	19.8	19.9	11
12	20.0	20.1	20.2	20.3	20.4	20.5	20.6	20.7	20.8	20.9	12
13	21.0	21.1	21.2	21.3	21.4	21.5	21.6	21.7	21.8	21.9	13
14	22.0	22.1	22.2	22.3	22.4	22.5	22.6	22.7	22.8	22.9	14
15	23.0	23.1	23.2	23.3	23.4	23.5	23.6	23.7	23.8	23.9	15
16	24.0	24.1	24.2	24.3	24.4	24.5	24.6	24.7	24.8	24.9	16
17	25.0	25.1	25.2	25.3	25.4	25.5	25.6	25.7	25.8	25.9	17
18	26.0	26.1	26.2	26.3	26.4	26.5	26.6	26.7	26.8	26.9	18
19	27.0	27.1	27.2	27.3	27.4	27.5	27.6	27.7	27.8	27.9	19
20	28.0	28.1	28.2	28.3	28.4	28.5	28.6	28.7	28.8	28.9	20
21	29.0	29.1	29.2	29.3	29.4	29.5	29.6	29.7	29.8	29.9	21
22	30.0	30.1	30.2	30.3	30.4	30.5	30.6	30.7	30.8	30.9	22
23	31.0	31.1	31.2	31.3	31.4	31.5	31.6	31.7	31.8	31.9	23
24	32.0	32.1	32.2	32.3	32.4	32.5	32.6	32.7	32.8	32.9	24
25	33.0	33.1	33.2	33.3	33.4	33.5	33.6	33.7	33.8	33.9	25
26	34.0	34.1	34.2	34.3	34.4	34.5	34.6	34.7	34.8	34.9	26
27	35.0	35.1	35.2	35.3	35.4	35.5	35.6	35.7	35.8	35.9	27
28	36.0	36.1	36.2	36.3	36.4	36.5	36.6	36.7	36.8	36.9	28
29	37.0	37.1	37.2	37.3	37.4	37.5	37.6	37.7	37.8	37.9	29
30	38.0	38.1	38.2	38.3	38.4	38.5	38.6	38.7	38.8	38.9	30
31	39.0	39.1	39.2	39.3	39.4	39.5	39.6	39.7	39.8	39.9	31
32	40.0	40.1	40.2	40.3	40.4	40.5	40.6	40.7	40.8	40.9	32
33	41.0	41.1	41.2	41.3	41.4	41.5	41.6	41.7	41.8	41.9	33
34	42.0	42.1	42.2	42.3	42.4	42.5	42.6	42.7	42.8	42.9	34
35	43.0	43.1	43.2	43.3	43.4	43.5	43.6	43.7	43.8	43.9	35
36	44.0	44.1	44.2	44.3	44.4	44.5	44.6	44.7	44.8	44.9	36
37	45.0	45.1	45.2	45.3	45.4	45.5	45.6	45.7	45.8	45.9	37
38	46.0	46.1	46.2	46.3	46.4	46.5	46.6	46.7	46.8	46.9	38
39	47.0	47.1	47.2	47.3	47.4	47.5	47.6	47.7	47.8	47.9	39
40	48.0	48.1	48.2	48.3	48.4	48.5	48.6	48.7	48.8	48.9	40

Example—If point is 22.6 ft. above grade, how far should it be from center line to be a slope stake point? Ans. from Table 30.6. For same slopes but other widths of roadbed, correct above figures by one-half difference in width of roadbed; thus in example above, for 20 ft. roadbed distance will be $30.6 - (20 - 16) \div 2$ or 2 ft. added to $30.6 = 32.6$. For slopes of 1 on 1½ see inside of back cover.

Copyright, 1914, by Eugene Dietzgen Co.

Location of Houses

ENGINEERING DEPARTMENT No. 1,
CITY OF EAST SAN DIEGO,
CALIFORNIA.

Indexed to date Feb. 5, 1918.

Card " " Mar 21, 1918.

Chic

H

0	
1	
2	
3	
4	
5	
6	
7	
8	
9	
10	
11	
12	
13	
14	
15	
16	
17	
18	2
19	2
20	2
21	2
22	3
23	3
24	3
25	3
26	3
27	3
28	3
29	3
30	3
31	3
32	4
33	4
34	4
35	4
36	4
37	4
38	4
39	4
40	4

Exam
to be a slo
of roadbed,
example ab
30.6 = 32.6.

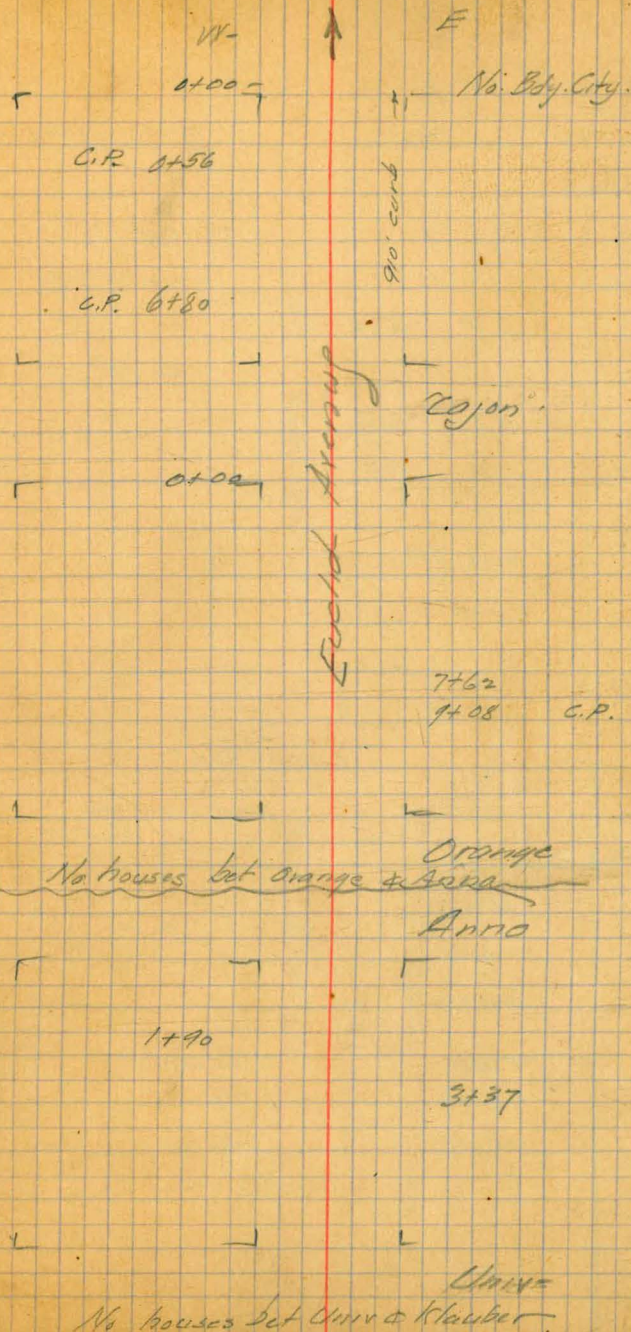
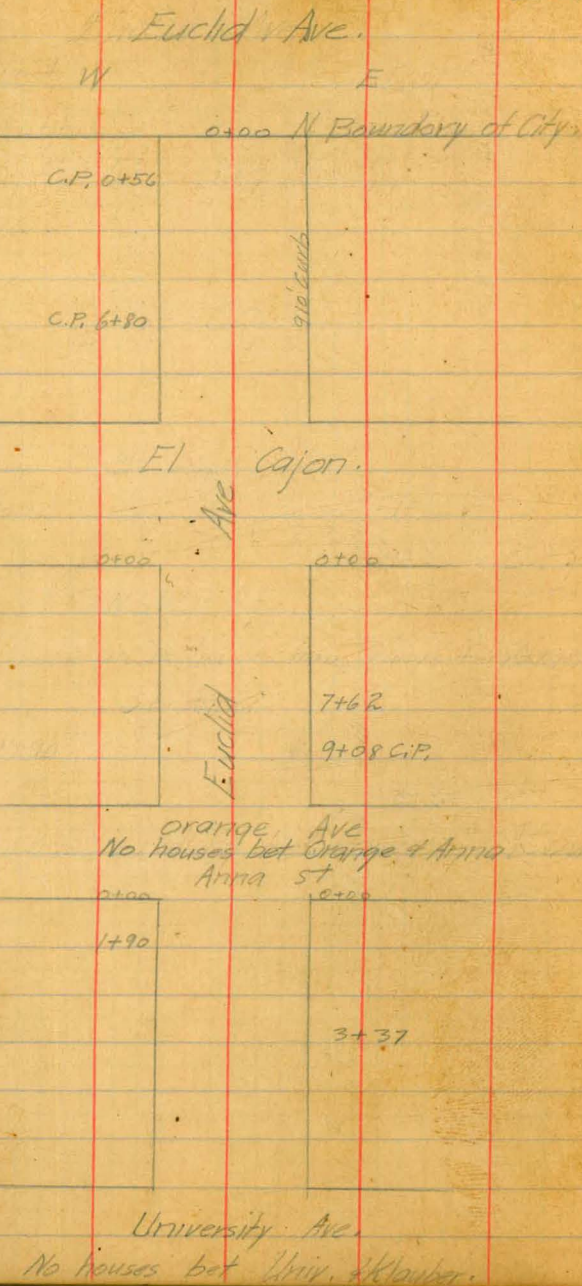
Index

Street	Page	Street	Page
Colonial	✓ 23		
Charmourne	✓ 11	Sierra	✓ 2
Conklin	✓ 52	Staditors	✓ 47
Cabrillo	✓ 15	Sisson	65
Copeland	✓ 41		
Euclid	✓ 1		
Fourth St	64		
Hairmount	✓ 27		
Fifth St.	✓ 46		
Highland	✓ 18		
Hugo	✓ 58	Van Dyke	✓ 36
Monte Vista	8		
Menlo	✓ 5		
Meritone	✓ 8		
Orchard	✓ 11		
Orangetwood	✓ 23		
Fawly	✓ 31		

Location of all houses
on

Hyatt
Grat
Dec 315.

Note: - In the following notes C.P. indicates either a cess pool or septic tank



Location Houses on Sierra Ave

Hyatt
Grat
Dec 3, 15

Note: - In the following notes

W

E

0+00

N. Boundary of city

C.P. indicates

Cesspool or
septic tank.

C.P. 3+35

Granada Ave

1+65 C.P.

2+75 C.P.

3+75 C.P.

C.P. 3+90

C.P. 575

Olive Ave

C.P. 7+65

8+25

0+20

0+50

Cajon Ave.

0+00

Tent House 1+30

C.P. 1+90

4+00

C.P. 8+40

120' curb

Orange

125' curb

1+10

0700

Sierra Ave

Orange Ave.

0+00

150' curb
50' walk

C.P. 0+90

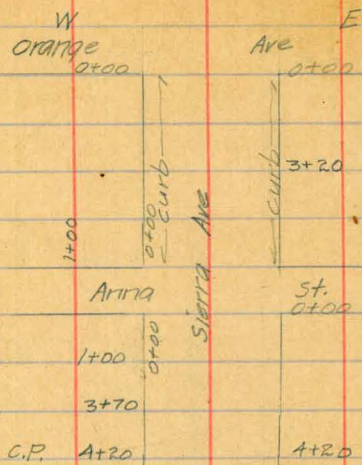
125' curb

Ave

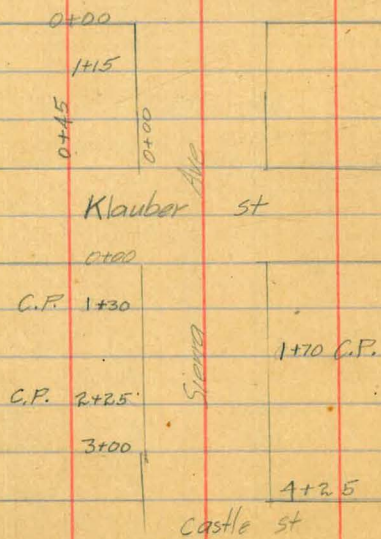
125' curb

Curb 17

Hvatt
Graf
Dec 7, 15.



University Ave.



Belle Caste
Seners



Hyatt
Graf

Dec 7, 15.

4

W

E.

Howard St.

0+00

0+00

0+70

0+95

1+80

2+05

4+75 2 Houses same lot.

6+80

7+25

8+25 2 room shack

8+50

9+00

SIDEWALK

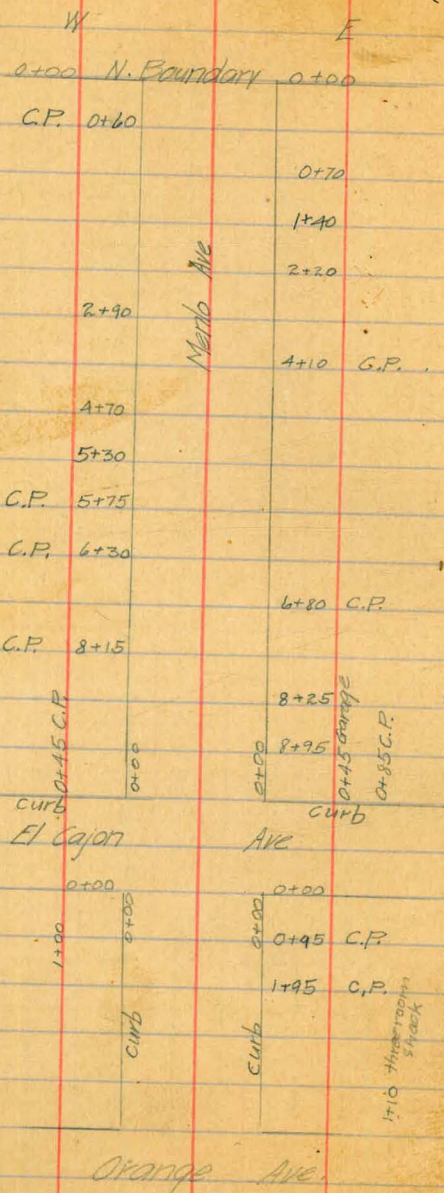
drops into canyon

□ That room house

Hyatt
Grat
Dec 8, 15.

127

Note: In the following notes C.P. indicates cesspool or septic tank.



W E
0+00 N. Boundary 0+00

C.P. 0+60

0+70

1+40

2+20

2+90

Merito Ave

4+10 C.P.

4+70

5+30

C.P. 5+75

C.P. 6+30

6+80 C.P.

C.P. 8+15

8+25

8+95

0+45 C.P.

0+00

0+00

0+45 Orange
0+85 C.P.

curb
El Cajon

curb

2+00 Vap. tra. garden

0+00

0+00

1+00

0+00

0+00

0+95 C.P.

1+95 C.P.

curb

curb

1+10 High-top (11)
5' track

Orange Ave.

Hyatt
Graf
Dec 8, 15.

6

Note:

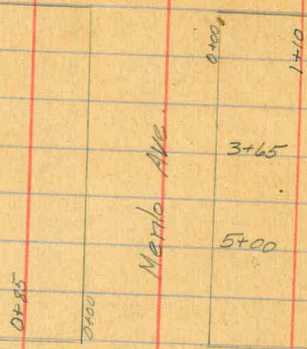
following

C.P. 11

Cessp

Septic

Orange Ave.



Amra St

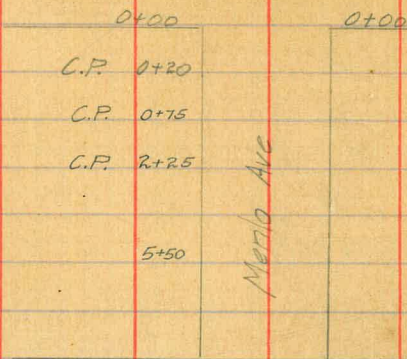
University Ave

Klauber St

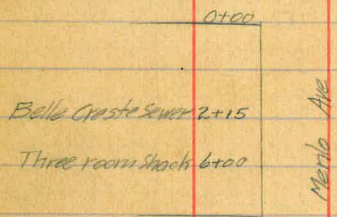
Hyatt
Graf
Dec 8 15

W E

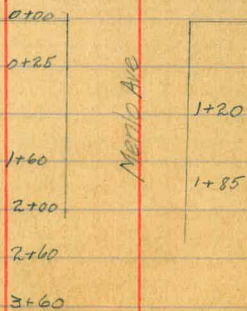
Klauber St



Castle St.



Howard St



Hyatt
Grat
Rec 8, 15

W E
 curb 0+00 0+00
 Norwood St.
 curb

Note: - In the following notes C.P. indicates a cesspool or septic tank.

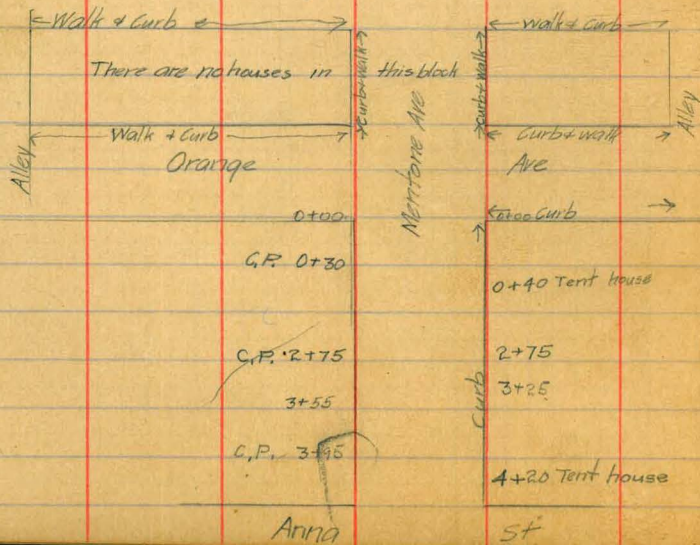
2+10
 3+20
 C.P. 5+15
 C.P. 6+65
 C.P. 7+20

Monte Vista
 curb
 curb
 1+65 C.P.
 5+20 C.P.
 6+25
 0+100
 0+35 C.P.
 1+60 C.P.

walk + curb entire block

N.L. = 8+92

El Cajon



Hyatt
Grad
Dec 8, 15,

W
Artta St.
E

0+00
1+10
C.P. 1+80
2+20

Ave

University Ave

0+00
C.P. 0+10
C.P. 0+20
C.P. 0+30

0+00

Merritt Ave

0+00

C.P. 1+65
2+30
4+65
5+60

1+25

1+65

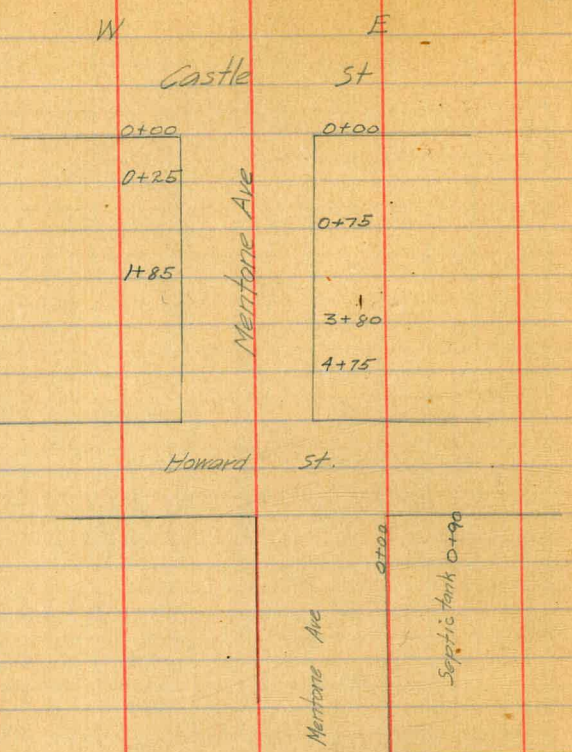
2+75

Klauber St.

C.P. 2+75
C.P. 3+25
C.P. 4+15

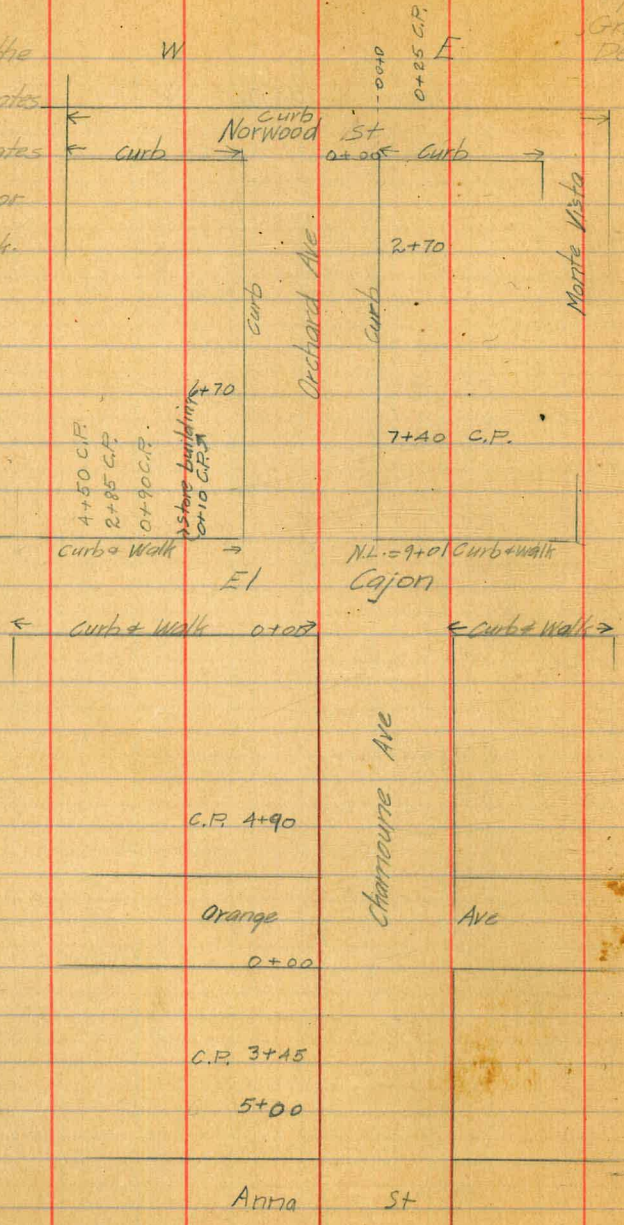
Castle St

Hyatt
Grot.
D.B. 8.15.



Hyatt
Great
Dec 8, 15

Notes - In the
following notes
C.P. indicates
Cesspool or
Septic tank.



Myatt
Grat
Dec 8, 15.

W F

Anna St

0+00

0+00

C.P. 1+15

C.P. 2+45

C.P. 3+00

3+70

4+15

3+75

4+30

4+65

5+15 C.P.

University

0+00

Ave

0+00

C.P. 1+20

3+70

4+15

4+60

1+70 C.P.

2+65

3+25

4+35

5+20

Charlaine Ave

Klauber St.

Hyatt
Graf
Dec 8, 15.

13

W

F

Klauber St

0+00

0+00

0+20

C.P. 1+25

C.P. 1+75

C.P. 2+70

Tent house 3+10

3+65

C.P. 4+10

G.P. 5+70

1+00 C.P.

0+00

Castle St.

1+10

4+35

0+00

3+30

Public Works
store building

Howard St.

Hyatt
Glat
Dec 8, 15.

14

W

E

Howard St

0+00

0+20

1+25

C.P. 2+30

4+95 Store building

0+00

1+60

Clark

St.

0+00

0+00

0+65

1+25

2+75

3+75

5+35

Chippewa Ave

Centre

St

0+00

0+00

2+65

4+35

4+90

Chatham

St

0+00

0+20

Hyatt
Graf
Dec 8, 15.

Note: - In the
following notes

W

E

El Cajon

C.P. indicates ← curb + walk at 00

← at 00 curb + walk

Cesspool or
septic tank.

Cabrillo Ave.

6+65 C.P.

Orange

Ave

0+00

0+00

1+10

2+60

4+35

5+00

Anna

St

0+00

0+00

C.P. 1+75

0+80

C.P. 3+15

4+20

Orange

Ave.

Hyatt
Grat
Dec 8, 15.

16

W University Ave E
0+00 0+00

C.P. 1+25

1+70 C.P.

3+15 C.P.

4+20 C.P.

5+40

Klauber St
Cabrillo Ave

0+00

0+00

0+60

1+30

1+30

1+75

1+75

2+15

2+70 C.P.

3+20

3+60 Tent

4+20

C.P. 4+65

Castle St

0+00

0+00

0+80

1+60

3+30

2+35

3+85

4+25 C.P.

C.P. 4+35

4+85

Howard St

Hyatt
Graf
DEC 8, 15

17

W

F

Howard St
0+00
1+20
2+75
3+80
4+60
Cabrillo Ave
0+00
0+75

Clark St
0+00
2+20
2+60
3+15
0+00
0+60
2+60

Centre St
0+00
1+20
3+20
4+55
0+00
0+30
1+20
Stuart + Cabrillo
Companion

Chatham St

100 ft
chickens ranch
House
Alley

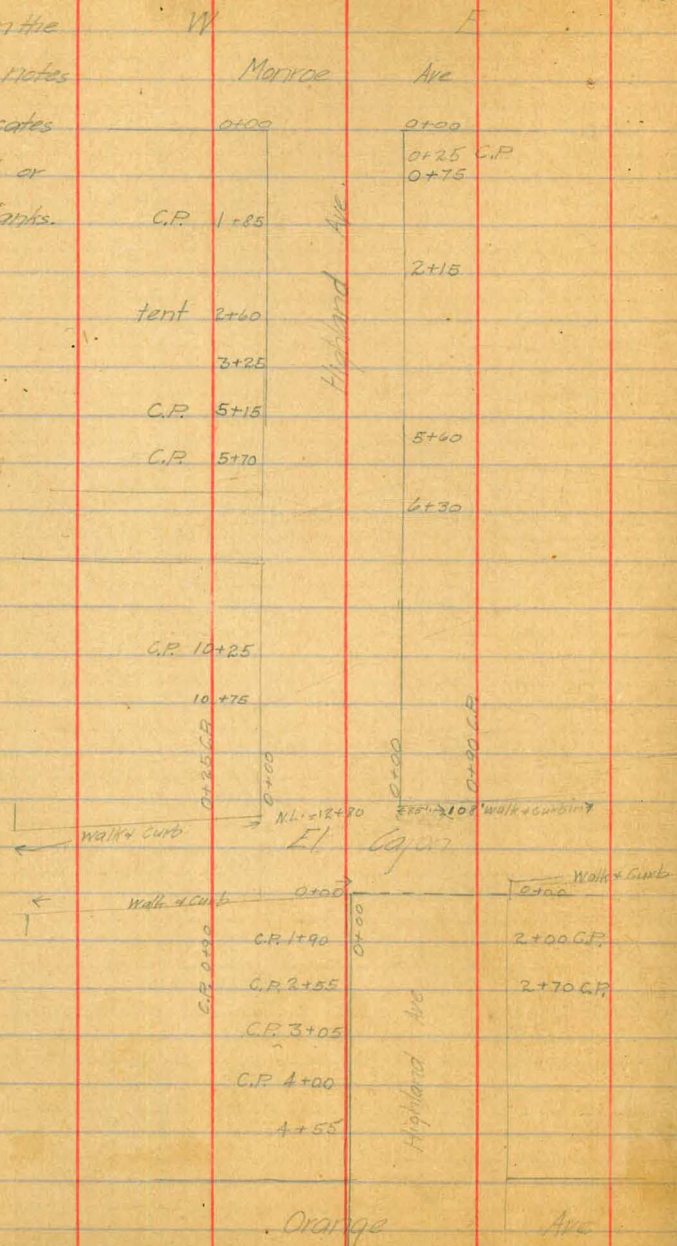
Hyatt
Grot
Dec 9, 5.

Notes: - In the following notes

C.P. indicates

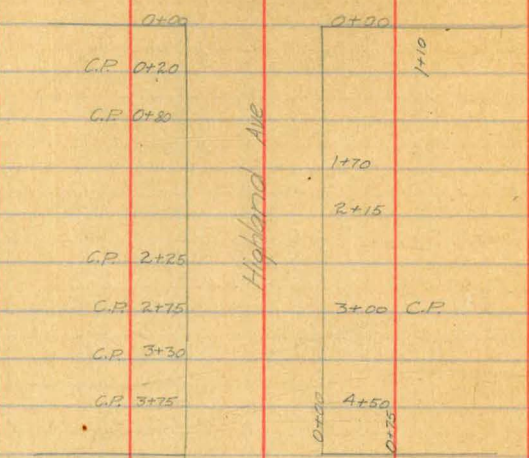
Cesspool or

Septic tanks.

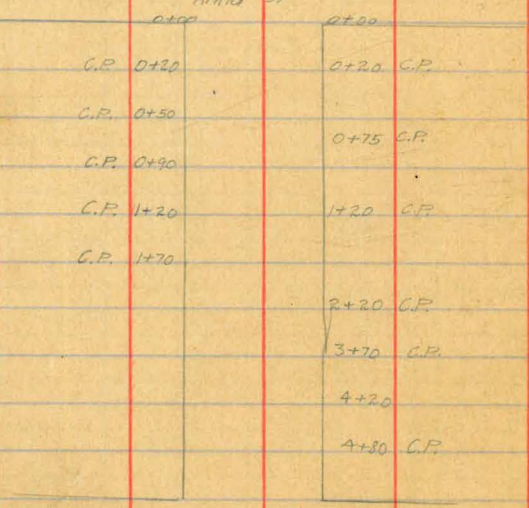


Hyatt
Graf
Dec 9/15.

W Orange Ave E



Anna St



University Ave

Hyatt
Graf
Dec 9, 15.

W

F

University Ave

Shore C.P. 1415
Realty Office 1700

0+00	0+00
C.P. 0+70	
C.P. 1+25	1+25 C.P.
C.P. 1+75	
C.P. 2+20	2+20
C.P. 3+20	3+20
C.P. 3+70	
C.P. 4+15	
C.P. 5+15	5+15 C.P.

Highland Ave

Klauber St.

0+20	0+00
	0+60
C.P. 1+20	1+20
2+15	
	3+15
	3+70 C.P.
	4+15 C.P.

Hamilton school C.P. 4+80

Castle St.

Hyatt
Graf
Dec 9, 15.

21

W

E or

Castle

St.

0+00

0+00

2+75

2+60

3+00 C.P.

3+50 Terr house

4+10

4+40

4+90

Highland Ave.

Howard

St.

0+00

0+00

3+00

3+15

Clark

St.

0+00

0+00

1+25

C.P. 1+65

2+20

2+60

3+65

4+70

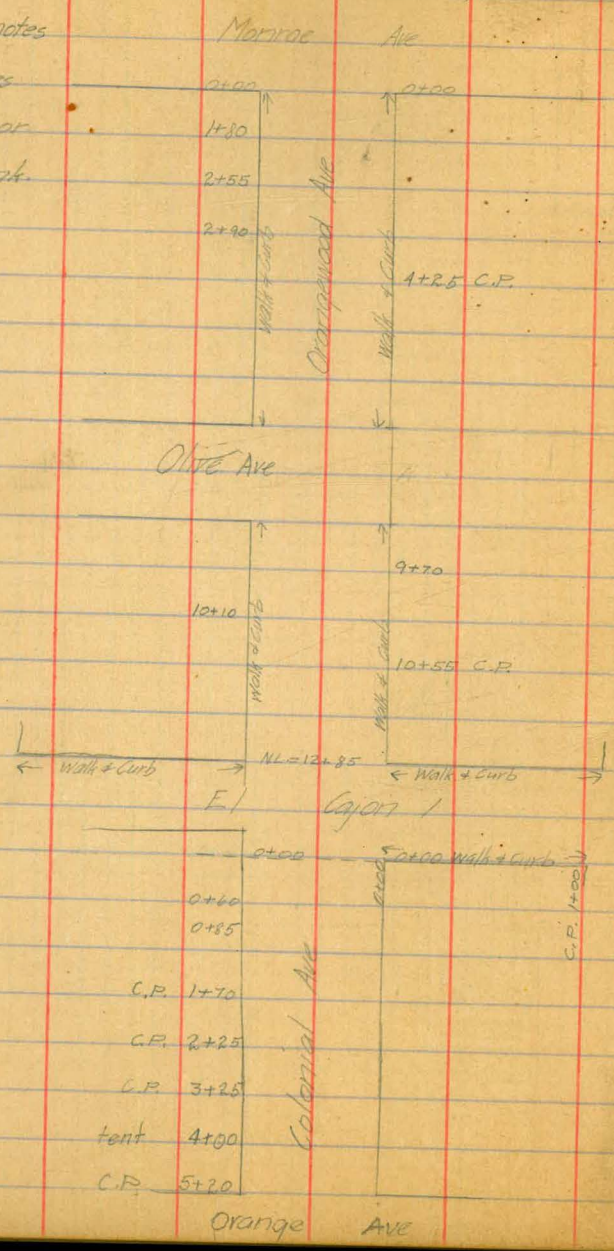
Centre St.

Hyatt
Graf
Dec 15.

W	Centre	F
0+00	0+00	0+00
G.F. 1+30	Highland Ave.	1+10
2+65		1+00
		5+10
	Chatham St.	

Hyatt
Grant
Dec 9, 15.

Note: In the
following notes
C.P. indicates
Cesspool or
septic tank.

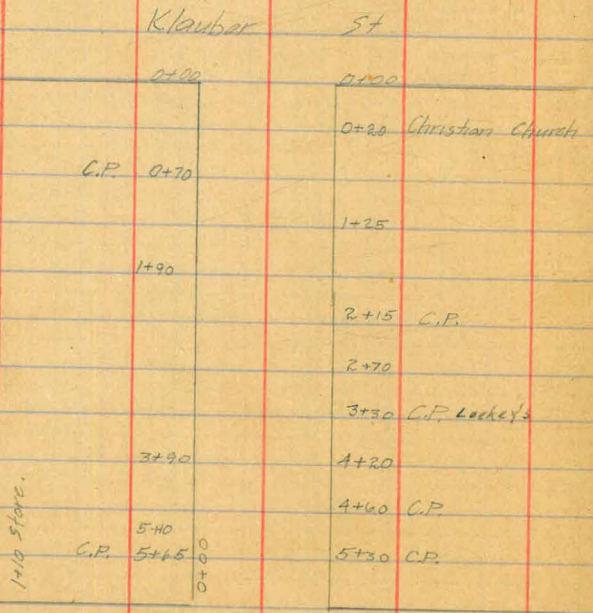
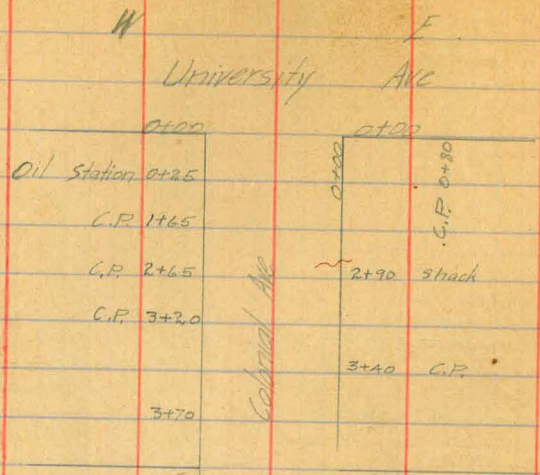


Hyatt
Corat
Dec 9, 15.

W	Orange Ave	E
0+00	Colonial Ave	0+00
C.P. 1+95		1+95 C.P.
C.P. 2+45		3+00 C.P.
C.P. 3+45		3+45 C.P.
C.P. 4+55		4+40 C.P.
		4+95 C.P.
C.P. 5+25		5+45 C.P.
	Anna St	0+00
C.P. 0+20		0+75 C.P.
C.P. 1+15		
C.P. 1+70		1+70 C.P.
C.P. 2+20		
C.P. 2+70		2+70 C.P.
C.P. 3+25		3+65 C.P.
		3+90 Store
C.P. 4+20		4+20 C.P.
C.P. 4+70		
C.P. 5+15		
1+10 C.P.		
0+65 C.P.		
0+20 C.P.		
	University Ave	

23

Hott
Spot
Dec 9, 15



1+10 store.

Castle St. 65

Hypatt
G-101
Dec 8, 15

W

E

Castle

St

0+00

0+00

C.P. 0+20

1+20

C.P. 2+25

4+15

Colonial Ave

0+80

C.P.

2+25

3+15

Howard

St.

0+00

0+00

2+25

C.P. 4+15

Clark

Ave

St

0+00

1+75

3+00 C.P.

4+00

Centre

Colonial Ave

St

0+25

0+75

C.P. 1+20

C.P. 1+60

Stack 5+10

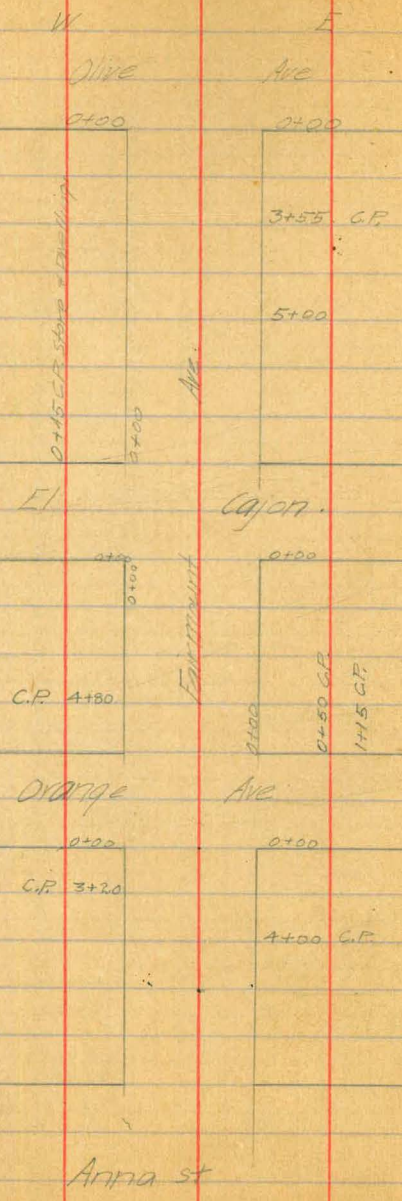
3+95 Stack

4+25 Stack

Location of all Houses on Fairmount Ave.

Hyatt
4100 D.C.

Notes in the following notes C.P. indicates cesspool or septic tank.



Fairmount Ave (cont)

Hyatt
Gross
Dec 9, 15

SW

E

Anna St

0+00

0+00

G.P. 0+20

G.P. 0+90

G.P. 1+45

G.P. 2+00

G.P. 2+45

G.P. 2+70

G.P. 4+75

G.P. 5+55

1+15 Cigar Store
1+00 The Famous Tower
0+00 Realty office

Fairmount Ave

4+20 G.P.

0+00

Realty office.

University

Ave.

1+15
1+00
0+45
0+10
0+05
0+00
0+35
0+16

Tent house 3+50

1+00 G.P.

0+00

0+00

0+15 Fairmount water co.

1+20 G.P.

2+65 G.P.

Klauber St.

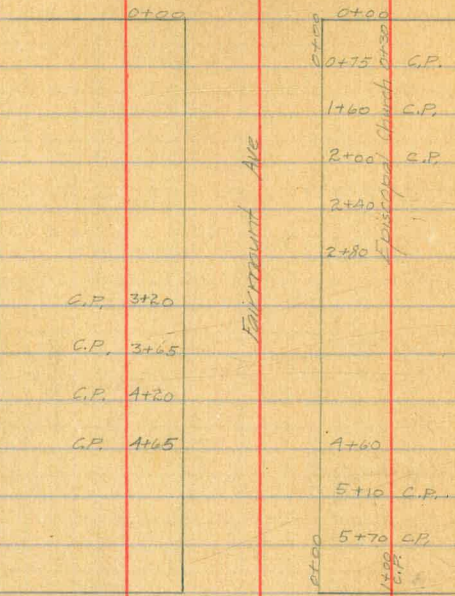
Fairmount Ave

Hyatt
Grat
Dec 9/15

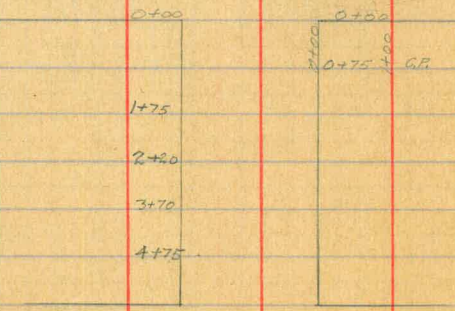
W

E

Klauber St



Castle St



Howard St

Fairmount Ave.

Myott
Grot
Dec 9/15.

W

E

Howard St

0+00

0+00

1+15

1+75

Fairmount Ave

2+15 C.P.

4+15

C.P. 4+85

C.P. 5+50

Clark St

St

4+20 C.P.

Centre

St.

1+70

Chatham St

Notes: In the following notes C.P. indicates cesspool or septic tank

Hvatt
Grat
Dec 1915

W

E

1140 S.E.

Septic tank located here

Olive

Ave

0+00

0+00

3+35

? C.P. 4+25

4+70

Bay Ave

El

Canton

0+00

0+00

Garage 0+70

C.P. 0+75

C.P. 1+75

C.P. 2+45

C.P. 3+00

3+80

C.P. 4+75

1+70

0+30 C.P.

Orange

Ave.

Hyatt
Grat
Dec 10, 15.

W Orange Ave

0+00

0+00

C.P. 0+55

C.P. 1+15

1+65

C.P. 2+95

1+70 C.P.

3+50 C.P.

1410 Church Thos.

Bandy Ave

Anna St.

0+00

0+00

C.P. 0+55

1+10

Shack 2+05

1+35

Store 2+40

C.P. 2+65

C.P. 3+20

3+20 C.P.

C.P. 4+15

4+70 Fairmount Hall

Tim Shop 4+90

4+90 Realty Office

Store B. 5+35

5+35 Plumbing Shop

1335 2nd Hand
0+40 Underwriter
0+60
0+80 5th
0+10
0+00

5+55 Realty office
0+10 Shop
0+40 1st
0+50 2nd
0+60 3rd
0+70 4th
0+80 5th
0+90 6th
1+00 7th
1+15 Restaurant

Steiner Ave

Hyatt
Graft.
Dec 1915.

W	University Ave	E
0+00	0+00	0+00
Empty 1.40 Bakery 1.00 Grocery 0.75 Barber 0.65 City Engineers 0.50 Aluminum 0.45 Dry Clean 0.20	0+00	0+00 Plugs 0.20 Empty 0.20 Barber 1.65 Cigars 0.65 Empty 0.90 Grocery 1.15
0+75	0+75	0+50 Post O. 0+70 Barber.
Shoe Shop 0+75	0+75	
Store Empty 1+65	0+75	
Paint Shop 1+75	0+75	
City Engineers 1+90	0+75	
2+15	0+75	
2+55	0+75	
2+95	3+10 G.F.	
3+35	3+35	
3+75	3+75	
	4+70	
Lumber yard 5+90	0+75	
	0+75	
Klauber	St.	

Bulky Ave

Hyatt
G101
Dec 19, 18.

W
Klauber St. E

0+00	0+00
0+20	
0+40	
1+15	C.P.
1+45	C.P.
1+80	C.P.
2+15	
2+60	2+60 C.P.
C.P. 3+20	
C.P. 3+60	
C.P. 4+20	
4+70	

Castle St.

0+00	0+00
C.P. 0+25	
C.P. 0+50	
C.P. 0+75	
C.P. 1+25	1+15
C.P. 2+10	1+85
2+30	2+30
3+00	
4+20	
4+60	

Howard St.

Hyatt
Dist
DEC 10 15

W

E

Howard St.

0+00

1+55

2+20

0+00

1+55

4+65 C.P.

Perry Ave.

Clark

St

0+00

0+65

1+75

0+00

2+05

Lexington Ave

Hyatt
Grof
Dec 1915.

Note: - In the
following notes

C.P. indicates

Cesspool or

Septic tank

W

Olive

Ave

0+00

0+00

1+20

1+30

C.P. 2+85

C.P. A+40

C.P. A+85

Van Dyke Ave.

0+35 Paralta school

E

Lajan

0+00

0+00

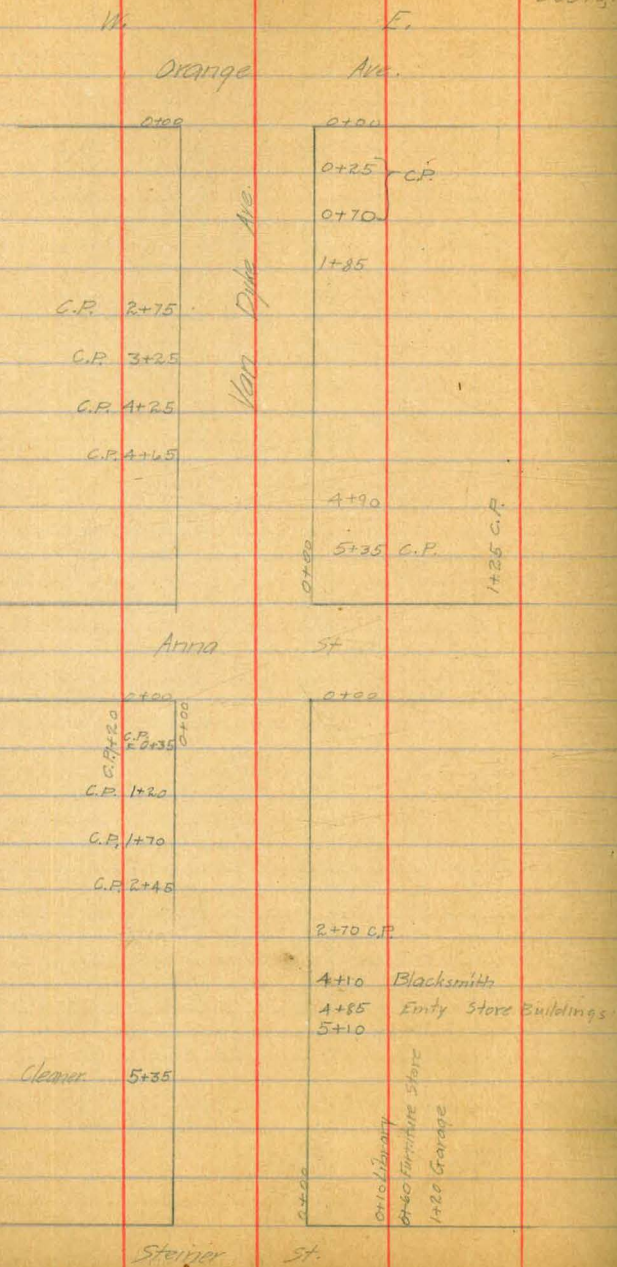
1+70 C.P.

4+70 C.P.

Orange

Ave

Hyatt
Graft
Dec 1915.



Hyatt Grot
Dec 1915

W University Ave. E

	0100	0100
Bakery 1+26 Barber 1+35	0100	0100
C.P. 2+80		
C.P. 1+25		
C.P. 1+65		
C.P. 2+25		
City Hall 2+75		
C.P. 3+70		
1+20 C.P. 0+15 C.P. 0+55 C.P. 0+40 C.P.	0+00	4+10

Klauber St.

	0100	0100
C.P. 1+20	0+90	
C.P. 1+15		
	2+70	1+65
	3+10	
C.P. 3+45		3+20
		3+60
C.P. 3+25		4+15
C.P. 4+25		5+35
C.P. 5+65		5+80 C.P.

Castle St.

Hyatt
G.I.T.
Dec 1915

39

W

E

Castle

St

0+00	0+00
0+90	
C.P. 1+65	
C.P. 1+90	
2+20	2+20 C.P.
2+70	
3+55	
4+20	
4+70	

Van Dyke Ave

Howard

St

0+00	0+00
1+15	
	1+65
C.P. 3+00	
	3+30
	4+25 C.P.
4+35	
	4+65
4+75	
5+25	

0+00

0+25 C.P.

1+00 C.P.

Clark

Hyatt
5107
Dec. 1915.

40

W.

E.

Clark

St

0+00

0+00

0+20

C.P. 2+65

3+70

4+25

Kenn Dike Ave

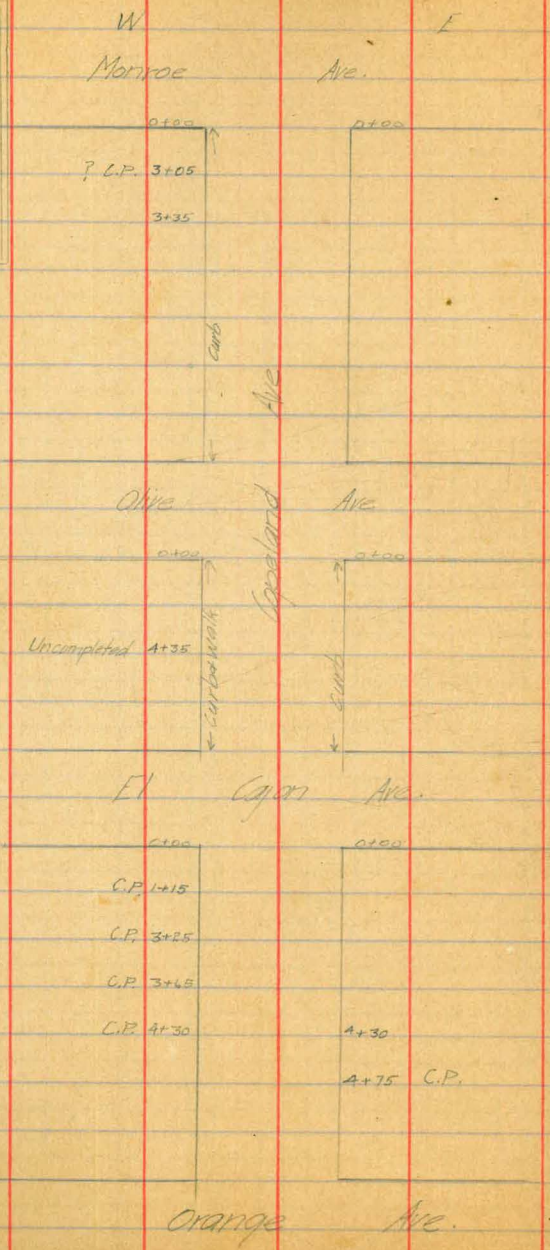
5+30

Centre

St.

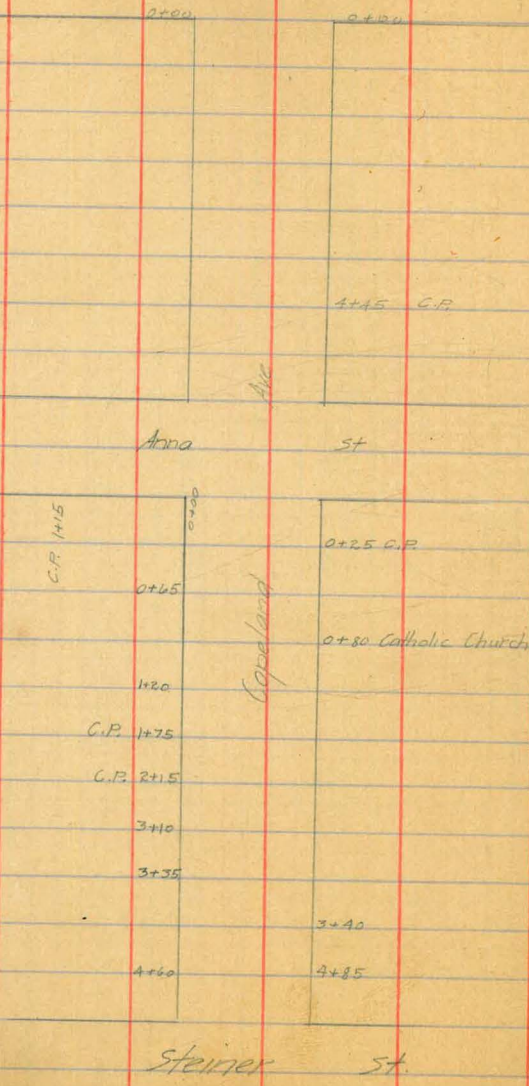
Hyatt
Graf
Dec 11/15.

Notes in the
following notes
C.P. indicates
cesspool or septic
tank



Hyatt
Graf
DEC 14/15.

W. Orange Ave F.



Hyatt
Graf
Dec 16, 15.

W

F

University

Ave

0+00	0+00
C.P. 1+30	1+75
C.P. 3+75	
C.P. 4+25	4+25 C.P.
4+75	
1+25 C.P. 0+25 C.P. 0+55 C.P. 0+80 C.P. 0+00	0+00 0+20 C.P. 0+55 C.P. 0+90 C.P. 1+20 C.P.

Ave.

Klauber

St

0+00	0+00
Nursery 1+45	1+25
2+15	2+00 C.P.
	2+15 C.P.
	3+00 C.P.
3+80	
4+15	4+15
4+65	4+75
5+10	

Capehart

Castle

St.

Hyatt
Grat
Dec 1/15.

44

W

E

Castle

St

0+00	0+00
1+10	
House Under Cons. 0+25	1+20
	1+40
2+10	2+10
	2+40
2+65	2+65
	3+65
	4+70
	5+70

Ave.

Howard

St.

0+00	0+00
C.F. 0+15	
C.F. 1+20	1+20
Tent house 1+75	
	2+50
3+40	3+40
3+95	

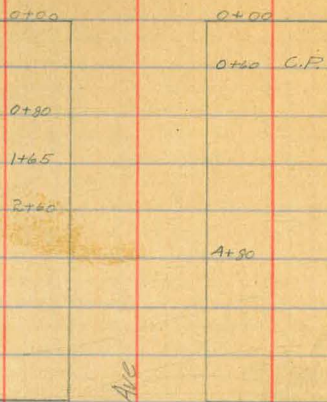
Capehart

Clark

St

Hyatt
Graf
Dec 13, 15

W Clark E St



Centre

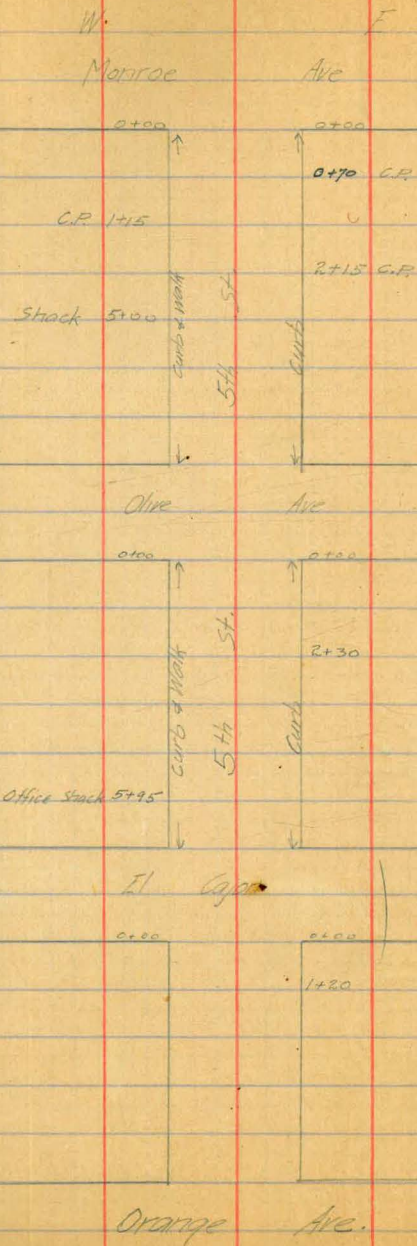


Chatham St.

1+30

1+30

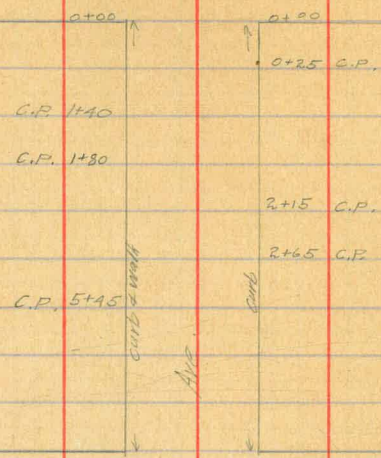
Hyatt
Gard
Dec 11, 15.



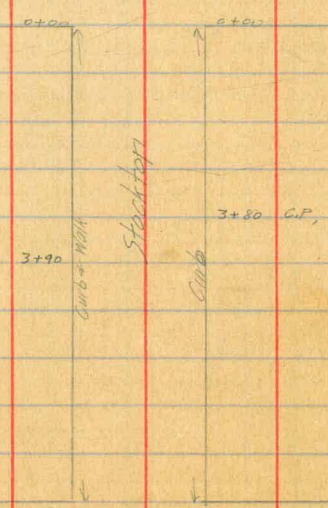
Hyatt
Graf
Dec 11/15.

Notes: In the
following notes C.P.
indicates Cesspool
or Septic tank.

W
Morroe Ave
F

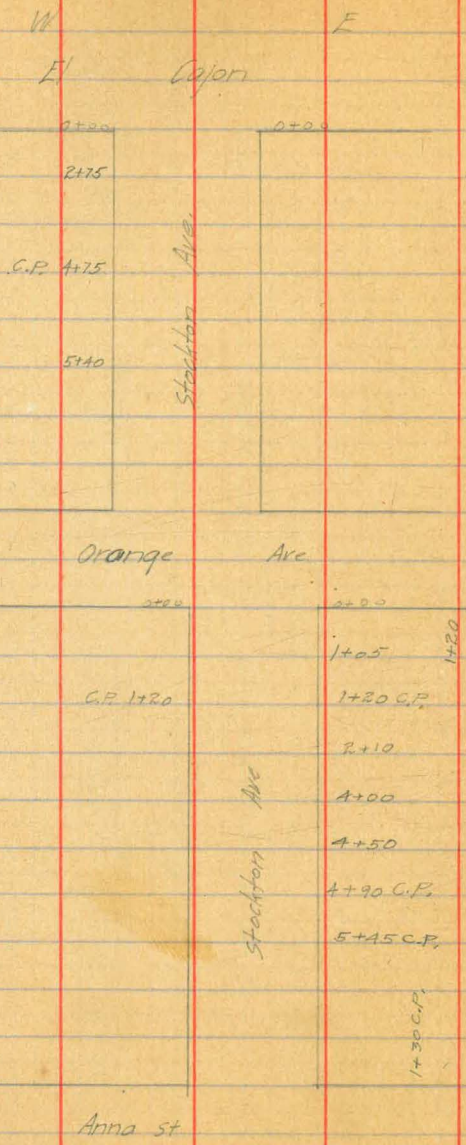


Olive Ave



El Cajon

Hiatt
Graf
DEC 11, 15



Hyatt
Graft
Dec 16, 15.

W

F

Anna

St.

C.P. 1+65

1+20

C.P. 1+15

1+65

2+05

2+15

2+40 C.P.

2+20

2+20 Methodist Church C.P.

1+20

0+00

Ave.

3+75 C.P.

4+70 C.P.

0+65 Empty
0+90 Plumber

Steiner

St.

0+20

0+00

0+20

1+15 R.P.

Realty Office 1+35

Baptist Church 2+75

4+15

1+90 C.P.

2+25 C.P.

4+15 C.P.

4+65

5+20

Stockton

Pittoria Car Co. 1+10

Klauber

St.

Hyatt
Graf
Dec 13/15

W E

Klauber St

C.P. 1+25 C.P. 0+90 C.P. 0+40	C.P. 0+30	
		0+65
C.P. 1+25		
1+55		
		3+45
3+05		
3+55		3+75
4+05		
4+90		4+25
5+15		
5+80		

Castle St.

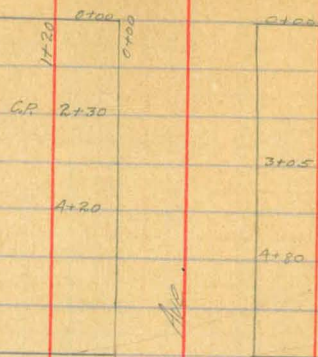
0+65		0+15 0+60 0+90 1+20
1+80	1+60	C.P.
	1+90	Tent house
2+25	2+25	
	2+65	
	4+65	

Howard St.

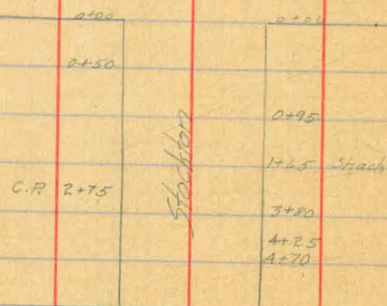
Hyatt
Gmt
Dec 13/15

W F

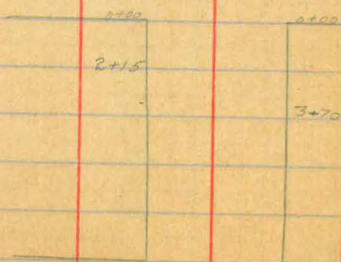
Howard St



Clark St



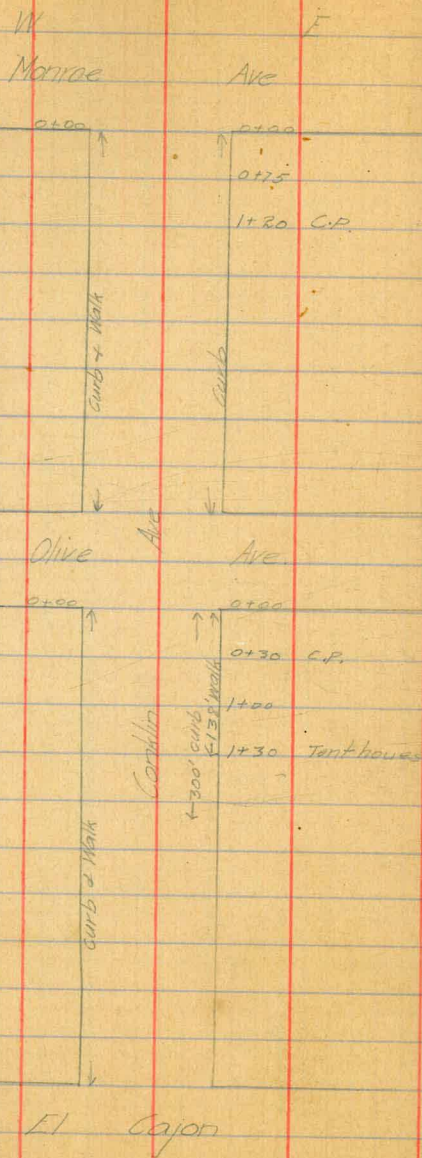
Centre St



Chatham

3+00 ±

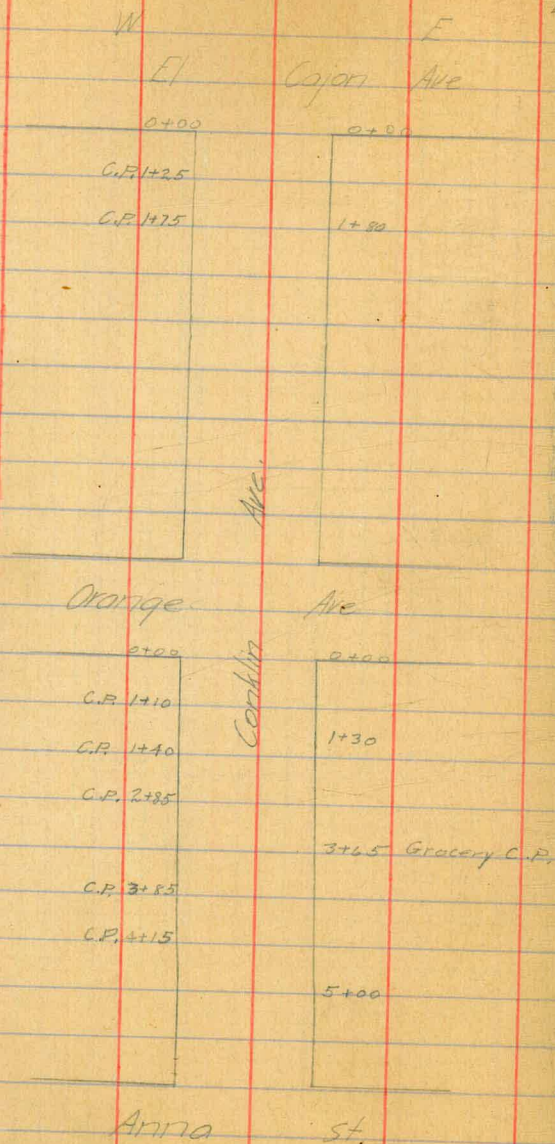
Hyatt
Graf
Dec 13, 15



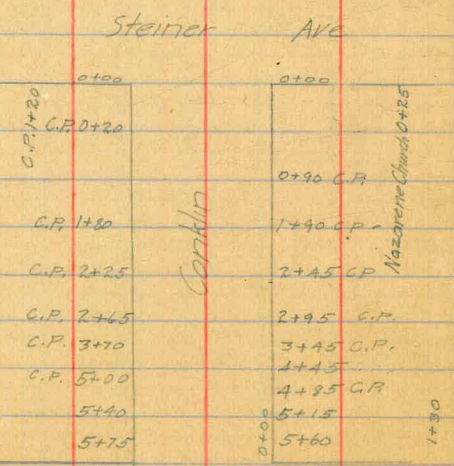
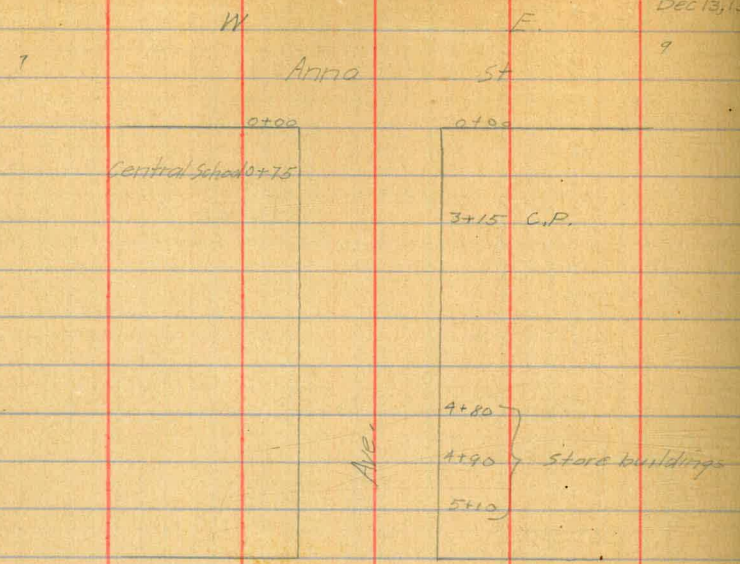
Hyatt
Grat
DEC 13, 15

53

Note: In the
following notes C.P.
indicates cesspool
or septic tank



Hyatt
Graf
Dec 13, 15,
9



Klauber St

Hyatt
Gret
Dec 13/15.

55

W

F

Klauber

St

0+00

0+00

0+40 C.P.

1+20

1+75

3+40

3+40

3+70

3+90

4+10

4+60

4+55

4+90

Ans

Castle

St.

0+00

0+00

C.P. 0+10

0+65

0+85

1+25 C.P.

1+35

2+25

3+65 C.P.

C.P. 3+90

5+25

C.P. 5+80

5+75

Corral

C.P. 1+20

Howard

St.

Hyatt
 Graf
 Dec 13, 15

W Howard St. E

0+00 0+00

1+80

1+65

2+00

4+75

Ave.

Clark St.

0+00

0+00

Corridor

1+55 Shack.

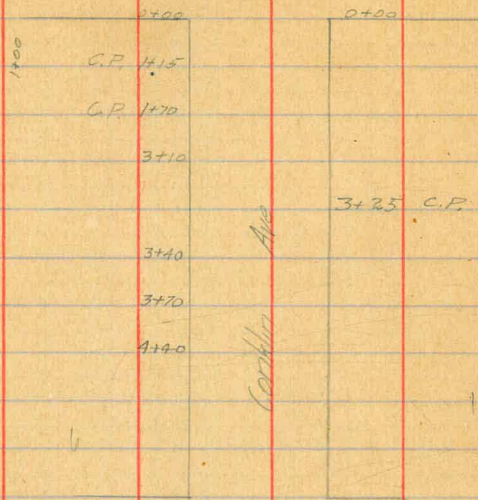
Centre St.

Hyatt
Graf
Dec 13, 15

W

E

Centre St



Carroll Ave

Chatham St

Hyatt
Grat
Dec 16, 15.

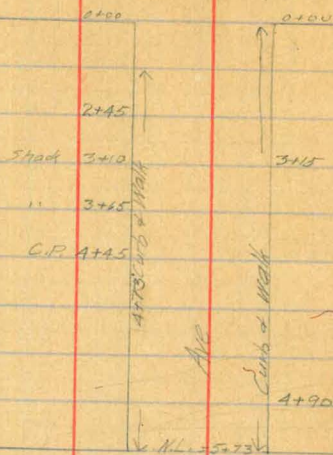
58

W

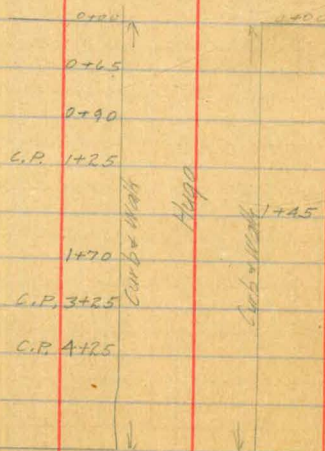
E

Monroe Ave

Note: - C.P.
Indicates cess
pool or septic
tank.



Olive Ave



El

Cajon

Hyatt
Graf
Dec 16/15.

W E

El Cajon

2:20

4:25 C.P.

Orange Ave

C.P. 0+85

1+30

1+70

3+00

3+50 C.P.

C.P. A+40

Arroyo St

Hyatt
Graf
DEC 13, 15.

W E

Anna St

0+00	
1+15	
2+65	
3+15	
1 G.P. 3+55	
3+90	
4+65	
0+80	
0+00	

Ave.

Steiner St

C.P. 1+20	
1+65	
2+30	
3+15	
4+75	
5+30	
C.P. 0+20	
0+75	
1+65	
2+25	
3+75 C.P.	
0+10 C.P.	
0+75	
1+65	
2+25	
3+75 C.P.	

Hugo

Klauber St.

Hyatt
Grot
DEC 13, 15.

61

W

F

Kloubert St

0+00	0+00
C.P. 0+20	0+30 C.P.
C.P. 0+70	
	1+70 C.P.
2+25	
	2+75
3+10	3+10
	3+65 C.P.
3+80	
4+90	

Ave

Castle St

0+00	0+00
C.P. 0+20	0+20 C.P.
0+75	
1+35	
2+40	2+90
2+85	3+15
3+40	

Hwy

Howard St

Hyatt
Grat
Dec 16, 15.

62

W

F

Howard

St.

0500

0540

2+20

C.P. 5+20

Clark

St.

St.

1+30

Hugo

3+40

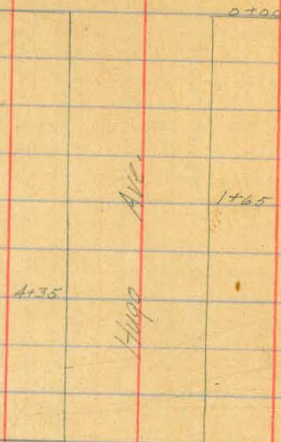
Centre

St.

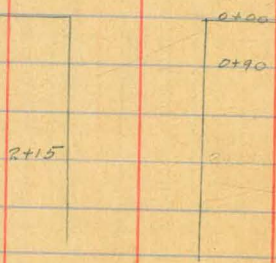
Hyatt
Graf
Dec 16, 15

W F

Centre St



Chatham St



Hyatt
Graf
Dec. 16, 15.

Notes - C.P.

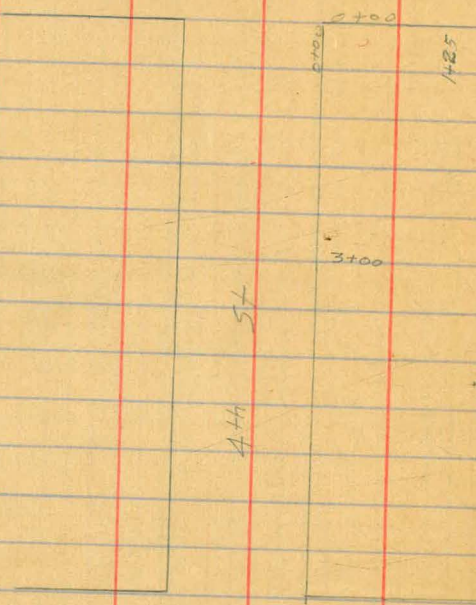
W

E

Indicates Cess-
pool or septic
tank.

There are no houses bet. Morroca & Olive

Olive Ave



El Cajon

There are no houses bet. Cajon & Orange.

Hyatt
Grot
DEC 16/15.

65

W
Orange

E
Ave

0+00
C.P. 2+15

0+00
0+60

Ave.

2+50 C.P.
3+55
4+50

Anna

St

0+00

1+30

2+30

C.P. 3+70

C.P. 4+20

0+00 Cal. Fithreca.
C.P.

Steiner.

0+00

1+15 C.P.

1+55 C.P.

1+95 C.P.

2+70

3+20

4+15

5+30

0+15 Grotch C.P.

Hyatt
Graf
Dec 16, 15.

W E
Steiner Ave

		1+35	1+25	7
C.P. 1+80		1+80		
C.P. 2+20				
C.P. 2+70		2+70		
		3+25		
C.P. 3+50		3+5 C.P.		
C.P. 4+70		4+55 C.P.		
5+15	Ave.	5+15 C.P.		
C.P. 5+75				

Klauber St.

C.P. 0+70		0+85 C.P.	1+15	
C.P. 1+20		1+10 C.P.		
C.P. 1+55		1+55 C.P.		
G.W. Hauser's Domicile				
C.P. 2+65		2+90 C.P.		
3+15	515507			
C.P. 3+60				
C.P. 4+75				
Printing Shop				
5+15				
C.P. 5+65				

Castle St.

There are no houses but Castled Howard

Hyatt
Graf
Dec 16, 15.

67

W.

E.

Howard St

0+00

0+00

2+25

2+75

Clark

0+00

5+15

Centre

St

0+65 C.P.

1+15

2+10

4+70

St.

0+00

Sisson

St.

Ave

Hyatt
Graf.
Dec 16/15,

68

W

E

Centre

St

0+00

0+00

0+15

1+30

2+20

3+25

5+20

Ave

Chatham

St.

0+00

0+30

St

Survey Lot 77

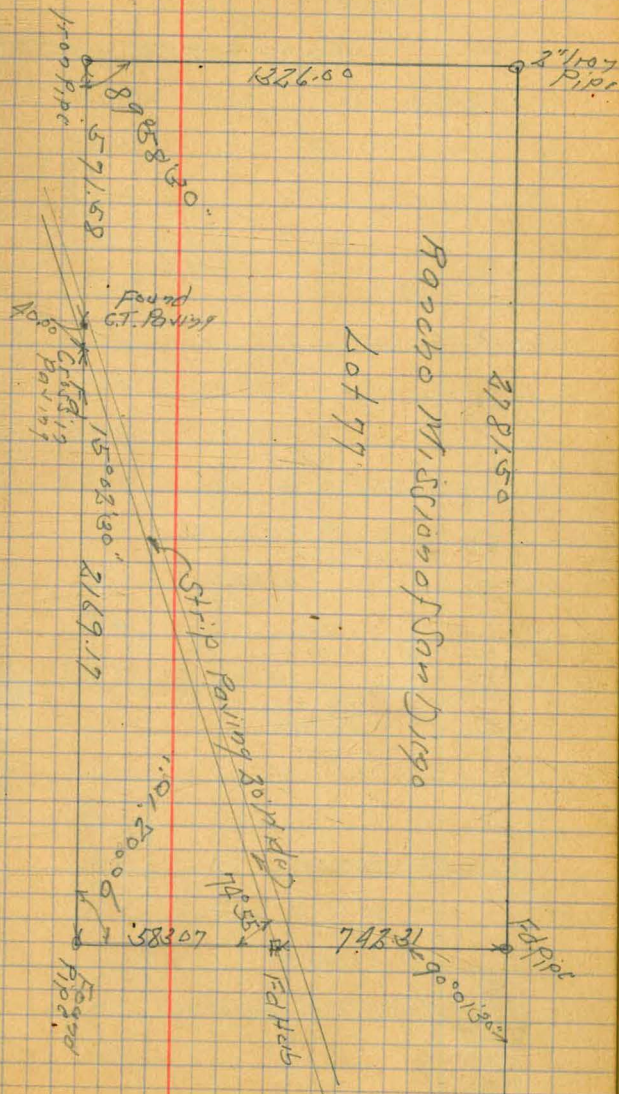
Rancho Mission of San Diego Sissos
Proposed Navy Landing Field Northern
Camp Kearney

Oct. 9-89

Sissos

Northern

69.3



Rancho Mission of San Diego

Lot 77

2781.50

Copied
1/1/89

Cross Section Alley Bk. 39
 Re Sub Bk H + 1 Taralta
 From Orange to El Cajon Bot. Felton + 34 1/2 ft

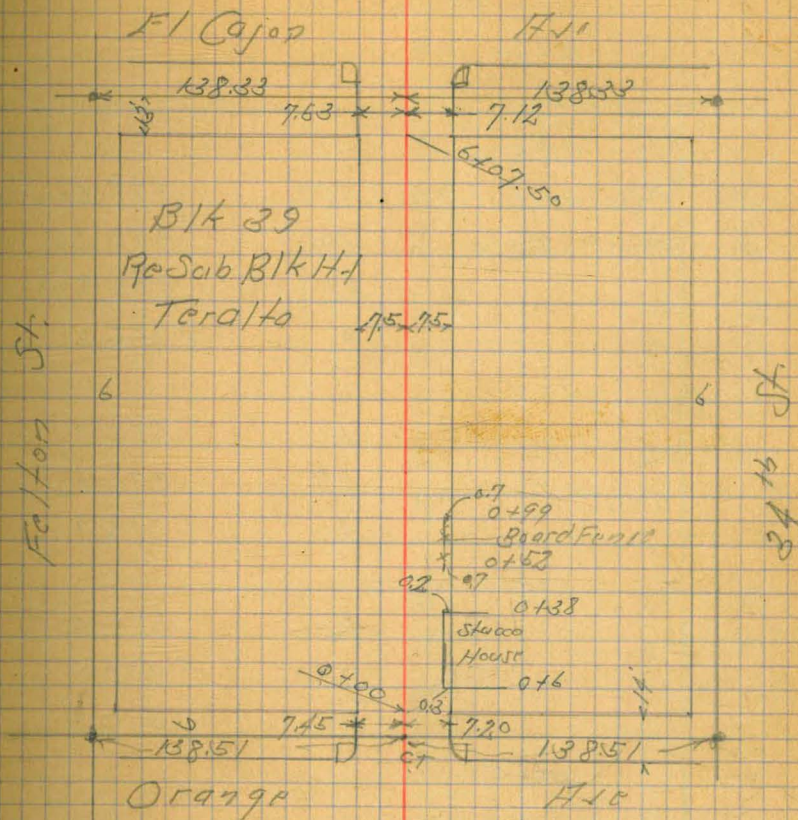
BM	3.25	377.82	374.47	14.80 Orange + 34.75 ft
	0 - 14 = H.C. Orange			
E on Paviny		5.21	372.61	
f " "		5.28	372.54	
H " "		5.39	372.43	
	0 + 10 = H.L. Orange			
H Top cb		4.76	373.06	
Gutter on Paviny		4.79	373.03	
f " "		4.62	373.20	
Gutter " "		4.54	373.28	
E Top cb		4.50	373.32	
	0 + 5			
E		3.3	374.5	
f		4.5	373.3	
H		3.9	373.9	
	0 + 2.5			
H		3.1	374.7	
f		3.3	374.5	
+ 7.2 = H/L Stucco Ho.		2.7	375.1	
TP	5.70	380.76	376	375.06
	0 + 4.4			
E - 0.5 = 1/2 Garage Conc Floor		5.00	375.76	
E		5.2	375.6	
f		5.5	375.3	
H		5.7	375.1	

Notes Red A Plot. on Profile 2709
11/30/39 C.B.H.

Indexed
 a.s.k.

Nov 29. 39
 Sisson
 Osborne

70



380.76

0+97

W+0.4 = Wly Power Pole

0+89

-9.3 = 2 Garage Conc Floor 492 375.84

W on Conc Apron 496 375.80

S 51 375.7

F 47 376.1

1+40

E 41 376.7

S 42 376.6

W 41 376.7

1+60

W 32 377.6

S 33 377.5

F 35 377.3

1+85

W+0.2 = Wly Power Pole

2+10

-5 = 2 Garage E Entrance 3.0 377.8

F 3.0 377.8

S 34 377.4

W 32 377.6

2+40

W 35 377.3

S 40 376.8

380.76

F 3.5 377.3

2+90

F 3.1 377.7

S 3.1 377.7

W 3.0 377.8

+0.2 = Wly Power Pole

3+50

W 3.4 377.4

S 3.2 377.6

E 2.9 377.9

TP 4.84 382.40 3.20 377.56

4+10

E 4.6 377.8

S 4.5 377.9

W 4.6 377.8

4+07

W-0.2 = Wly Power Pole

4+08

W-0.4 = Fly Garage NE of Conc Fl. 467 377.73

4+16

W-11 = 2 Do. Garage Conc of Fl. 495 377.55

4+50

W 5.0 377.4

S 4.9 377.5

E 4.9 377.5

382.40

382.40

	510		
F		4.7	377.7
L		4.8	377.6
W		5.0	377.4
	5106		
W-4.8 = Garage Conc Floor		5.05	377.35
	5118		
W+0.4 = Wly Porch Pole			
	5147		
-0.3 = Wly Garage 02 Conc Fl.		4.66	377.74
W		4.8	377.6
L		4.7	377.7
F		4.6	377.8
	5176		
F		4.5	377.9
L		4.7	377.7
W		5.0	377.4
+0.3 = Wly Conc Dr.		4.88	377.52
+1.3 = Fly Conc Walk		4.88	377.52
	610		
W-1.3 = BC Conc Walk		4.56	377.84
	610.750 = SL F/Cajon		
W Top Cb		4.56	377.84
Gather in Paving		4.72	377.68
L		4.76	377.65

E Gut Hoz on Pav.		4.58	377.82	
F Top Cb		4.38	378.02	
	6+27.56 = 5 Cb F/Cajon			
F on Paving		5.23	377.17	
L	" "	5.29	377.11	
W	" "	5.34	377.06	
TP	5.76	383.58	4.58	377.88
BM	2.06	380.85	4.79	378.79
BM			6.40	374.45

378.83
 378.82
 378.79
 378.88
 378.83
 378.82
 378.81
 378.80
 378.79
 378.78
 378.77
 378.76
 378.75

Re Cross Section Alley Block L Altadena
 From Redwood to +50' n
 Between 32nd & Bancroft

Original Notes See # 1539 Page 45
 Top Curve
 B.M. N.L. Redwood 633 313.48
 on N. Alley 307.15

0+0 = N.L. Redwood
 F Top lb 5.13 308.35
 F on Pavmg 5.70 307.78
 S " " 6.30 307.18
 H " " 6.44 307.04
 H Top lb 6.33 307.15

0+03'
 H 5.2 308.3
 +1 5.2 308.3
 +3 6.1 307.4
 S 6.0 307.5
 +4 5.9 307.6
 F 4.9 308.6

0+20
 F 4.6 308.9
 S 5.1 308.4
 H 5.0 308.5

0+50
 H+0.9 = Wly Power Pole

0+56
 H 5.2 308.3
 +1.0 = Top of Conc Wall 4.71 308.37
 S 5.3 308.2
 F 5.2 308.3

15' wide

INDEXED
 EFB

Dec 4-20
 S. 1807
 Northberry
 W. Moore 73

313.48

1+0

F 5.1 308.4
 S 6.1 307.4
 H 6.4 307.1
 +10 7.0 306.5

1+49

H+0.6 = Wly Power Pole
 1+50
 -5 7.0 306.5
 H 6.6 306.9
 S 6.3 307.2
 F 6.0 307.5

2+0

F 6.2 307.3
 S 6.8 306.7
 H 7.0 306.5
 +10 7.6 305.9

2+40

-10 7.3 306.2
 H 6.9 306.6
 S 6.8 306.7
 +5 6.6 306.9
 F 6.0 307.5

2+49

H+0.5 = Wly Power Pole

	313.48		
TP	129	308.16	6.61
	2+75		306.87
F		0.9	307.3
$\frac{1}{2}$		1.3	306.9
H		1.6	306.6
+10		2.3	305.9
	3+11		
-10		2.8	305.4
H		2.5	305.7
$\frac{1}{2}$		1.9	306.6
F		1.6	306.9
	3+15		
$\frac{1}{2}$	MH on Rim	1.54	306.62
	3+49		
H+0.6' = H Power Pole			
	3+50		
F		2.6	305.6
+2		3.4	304.8
$\frac{1}{2}$		3.4	304.8
H		3.6	304.6
+10		4.5	303.7
	3+90		
-10		7.4	300.8
H		6.2	302.0
$\frac{1}{2}$		6.3	301.9

	308.16		
+5		6.1	302.1
F		5.1	303.1
	4+22		
H-5.2 = $\frac{1}{2}$ Do Garage Concrete Floor		7.56	
	13.000		
	4+80		
-5		7.6	300.6
-2		7.9	300.3
F		8.9	299.3
$\frac{1}{2}$		9.0	299.2
H		8.8	299.4
+4		8.3	299.9
	4+42		
-15		16.2	292.0
-8 = Top New Fill		15.3	292.9
H		8.9	299.3
$\frac{1}{2}$		9.1	299.1
F		9.1	299.1
+5		9.0	299.2
	4+66		
-15 = Top Fill		17.5	290.7
F		9.6	298.6
$\frac{1}{2}$		9.4	298.8
H		11.7	296.5
+4 = Top Fill		14.9	293.3
+10		13.9	294.3

	308.16		
TP	0.28	296.86	11.58 296.58
	4+75		
-12		2.5	294.4
-5		4.7	292.2
-2 = Top Fill		6.2	290.7
M		5.4	291.5
L		2.3	294.6
F		1.1	295.8
+3		2.2	294.7
+14 = Top Fill		9.5	287.4
	4+88		
-2.5		10.2	286.7
F		12.0	284.9
L = Top Fill		10.7	286.2
M		8.2	288.7
+3.5 = Fly Porch		7.0	289.9
+12 Under House		2.5	294.4
	5+0.5		
-8.5 Under Porch		2.4	294.5
-3.5 = Fly Porch		5.0	291.9
M		6.2	290.7
L		7.7	289.2
F		7.6	289.3
+17		12.4	284.5

	296.86		
	5+15		
L = MH on Rim		5.93	290.93
	5+20		
-27		11.5	285.4
-10		7.5	289.4
F		6.4	290.5
L		5.8	291.1
+5		5.4	291.5
M		4.5	292.4
+10		2.6	294.3
TP	10.70	307.35	0.21 296.65
	5+39		
-10		10.0	297.4
-3		9.0	298.4
M		8.6	298.8
L		8.6	298.8
F		9.3	298.1
+15		13.8	293.6
+38		21.0	286.4
	5+49		
-10		9.2	298.2
F		4.7	302.7
L		5.7	301.7
M		5.6	301.8
+8 = Fly Bldg		5.8	301.4

307.35

5795

-23 = E/4 Bldg

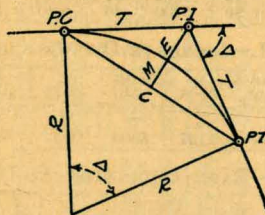
W	4.6	302.8
g	48	302.6
F	5.0	302.4
H	47	302.7
+10	44	303.0

54983 - S & Thorn

F Top Ch	347	303.88
F Pavng	370	303.65
g "	392	303.43
H "	385	303.50
H Top Ch	363	303.72

DIETZGEN'S RAILROAD CURVE AND REDUCTION TABLES

Copyright, 1914, by Eugene Dietzgen Co., New York City



CURVE FORMULAS

- Radius = $R = \frac{50}{\sin \frac{D}{2}}$ (1) Degree of Curve = D and $\sin \frac{D}{2} = \frac{50}{R}$ (2)
 Tangent = $T = R \tan \frac{\Delta}{2}$ (3) Length of Curve = $L = 100 \frac{\Delta}{D}$ (4)
 Middle ordinate = $M = R(1 - \cos \frac{\Delta}{2})$ (5) = $R \text{vers} \frac{\Delta}{2}$ (6)
 External = $E = T \tan \frac{\Delta}{4}$ (7) = $R \cos \frac{\Delta}{2} (1 - \cos \frac{\Delta}{2})$ (8) = $R \text{exsec} \frac{\Delta}{2}$ (9)
 Long Chord = $C = 2 R \sin \frac{\Delta}{2}$ (10) Δ = Central Angle

EXPLANATION AND USE OF TABLES

Stations.—Given P. I. = Sta. 161 + 60.35 to find Sta. of P. C. and P. T. $\Delta = 62^\circ 10'$ $D = 8^\circ 20'$. From Table IV for 1° curve $T = 3454.1$ and $+8\frac{1}{3} = 414.49$ ft. From Table V correction = .36 or $T = 414.85$ ft. P. C. = Sta. P. I. - $T = 157 + 45.50$. Also from (4) $L = 746.00$ and P. T. = Sta. P. C. + $L = 164 + 91.50$.

Offsets.—Tangent offsets vary (approximately) directly with D and with square of the distance. Thus tangent offset for Sta. 158 on above curve is 2.16 ft. found as follows. From Table III tangent offset for 100 ft. = 7.27 ft. Distance = $158 - \text{Sta. P. C.} = 54.50$, hence offset = $7.27 (54.50 \div 100)^2 = 2.16$ ft. Also square of any distance divided by twice the radius equals (approximately) the distance from tangent to curve. Thus $(54.50)^2 \div (2 \times 688.26) = 2.16$ ft.

Deflections.—Deflection angle = $\frac{1}{2} D$ for 100 ft., $\frac{1}{4} D$ for 50 ft., etc. For c ft. = (in minutes) $.3 \times C \times D^2$ or = defl. for 1 ft. from Table III $\times C$. For Sta. 158 of above curve = $.3 \times 54.5 \times 8\frac{1}{3} = 136.2'$ or $2^\circ 16.2'$, or = $2.50 \times 54.5 = 136.2'$ from Table III. For Sta. 159 deflection angle = $2^\circ 16.2' + 8^\circ 20' \div 2 = 6^\circ 26.2'$, etc.

Externals.—May be found in similar manner to tangents. Thus E for curve above is 91.37. For from Table IV for 1° curve $E = 960.6$ for $8^\circ 20' = 960.6 \div 8\frac{1}{3} = 91.27$ and from Table V correction = .10 or $E = 91.37$ ft. Or suppose $\Delta = 32^\circ$ and E is measured and found to be 42 ft. What is D ? From Table IV $E = 230.9$ and $\div 42 = 5.5$ or $D = 5^\circ 30'$.

ENGINEERING DEPARTMENT,
CITY OF EAST SAN DIEGO,
CALIFORNIA.

DISTANCES FROM CENTER OF ROADWAY FOR
CROSS-SECTIONING.

Roadway 16 feet wide. Side Slopes 1 on 1½.
For Single Track Embankment.

H	0	.1	.2	.3	.4	.5	.6	.7	.8	.9	H
0	8.0	8.2	8.3	8.5	8.6	8.8	8.9	9.1	9.2	9.4	0
1	9.5	9.7	9.8	10.0	10.1	10.3	10.4	10.6	10.7	10.9	1
2	11.0	11.2	11.3	11.5	11.6	11.8	11.9	12.1	12.2	12.4	2
3	12.5	12.7	12.8	13.0	13.1	13.3	13.4	13.6	13.7	13.9	3
4	14.0	14.2	14.3	14.5	14.6	14.8	14.9	15.1	15.2	15.4	4
5	15.5	15.7	15.8	16.0	16.1	16.3	16.4	16.6	16.7	16.9	5
6	17.0	17.2	17.3	17.5	17.6	17.8	17.9	18.1	18.2	18.4	6
7	18.5	18.7	18.8	19.0	19.1	19.3	19.4	19.6	19.7	19.9	7
8	20.0	20.2	20.3	20.5	20.6	20.8	20.9	21.1	21.2	21.4	8
9	21.5	21.7	21.8	22.0	22.1	22.3	22.4	22.6	22.7	22.9	9
10	23.0	23.2	23.3	23.5	23.6	23.8	23.9	24.1	24.2	24.4	10
11	24.5	24.7	24.8	25.0	25.1	25.3	25.4	25.6	25.7	25.9	11
12	26.0	26.2	26.3	26.5	26.6	26.8	26.9	27.1	27.2	27.4	12
13	27.5	27.7	27.8	28.0	28.1	28.3	28.4	28.6	28.7	28.9	13
14	29.0	29.2	29.3	29.5	29.6	29.8	29.9	30.1	30.2	30.4	14
15	30.5	30.7	30.8	31.0	31.1	31.3	31.4	31.6	31.7	31.9	15
16	32.0	32.2	32.3	32.5	32.6	32.8	32.9	33.1	33.2	33.4	16
17	33.5	33.7	33.8	34.0	34.1	34.3	34.4	34.6	34.7	34.9	17
18	35.0	35.2	35.3	35.5	35.6	35.8	35.9	36.1	36.2	36.4	18
19	36.5	36.7	36.8	37.0	37.1	37.3	37.4	37.6	37.7	37.9	19
20	38.0	38.2	38.3	38.5	38.6	38.8	38.9	39.1	39.2	39.4	20
21	39.5	39.7	39.8	40.0	40.1	40.3	40.4	40.6	40.7	40.9	21
22	41.0	41.2	41.3	41.5	41.6	41.8	41.9	42.1	42.2	42.4	22
23	42.5	42.7	42.8	43.0	43.1	43.3	43.4	43.6	43.7	43.9	23
24	44.0	44.2	44.3	44.5	44.6	44.8	44.9	45.1	45.2	45.4	24
25	45.5	45.7	45.8	46.0	46.1	46.3	46.4	46.6	46.7	46.9	25
26	47.0	47.2	47.3	47.5	47.6	47.8	47.9	48.1	48.2	48.4	26
27	48.5	48.7	48.8	49.0	49.1	49.3	49.4	49.6	49.7	49.9	27
28	50.0	50.2	50.3	50.5	50.6	50.8	50.9	51.1	51.2	51.4	28
29	51.5	51.7	51.8	52.0	52.1	52.3	52.4	52.6	52.7	52.9	29
30	53.0	53.2	53.3	53.5	53.6	53.8	53.9	54.1	54.2	54.4	30
31	54.5	54.7	54.8	55.0	55.1	55.3	55.4	55.6	55.7	55.9	31
32	56.0	56.2	56.3	56.5	56.6	56.8	56.9	57.1	57.2	57.4	32
33	57.5	57.7	57.8	58.0	58.1	58.3	58.4	58.6	58.7	58.9	33
34	59.0	59.2	59.3	59.5	59.6	59.8	59.9	60.1	60.2	60.4	34
35	60.5	60.7	60.8	61.0	61.1	61.3	61.4	61.6	61.7	61.9	35
36	62.0	62.2	62.3	62.5	62.6	62.8	62.9	63.1	63.2	63.4	36
37	63.5	63.7	63.8	64.0	64.1	64.3	64.4	64.6	64.7	64.9	37
38	65.0	65.2	65.3	65.5	65.6	65.8	65.9	66.1	66.2	66.4	38
39	66.5	66.7	66.8	67.0	67.1	67.3	67.4	67.6	67.7	67.9	39
40	68.0	68.2	68.3	68.5	68.6	68.8	68.9	69.1	69.2	69.4	40

Example—If point is 22.6 ft. above grade, how far should it be from center line to be a slope stake point? Ans. from Table 41.9. For same slopes but other widths of roadbed correct above figures by one-half difference in width of roadbed; thus in example above for 20 ft. roadbed distance will be $41.9 + (20 - 16) \div 2$ or 2 ft. added to 41.9 = 43.9. For slopes of 1 on 1 see inside of front cover.