

UNIVERSITY PAVING

UNIVERSITY PAVING

1940

F.B. 585

MICROFILMED
DEC 14 1964

Balboa Park Bicycle track Page 60.

University Paving
Fairmount to Euclid

Page

1

2 Gutters - Colonial & Alley bet. Col. & High.
[& bet. Col. & High.]

3 " - Highland Intersection

4 " Cabrillo "

5 " Chamourne "

6 " Mentone "

7 " Menlo "

8 " Sierra "

9 " Euclid "

10 ± Header - Colonial, Highland, Chamourne

11 " " Mentone

12 Diagram - Colonial Intersection

13

14 Diagram - Highland Intersection

15

16 Diagram - Cabrillo Intersection

17

18 Diagram - Chamourne Intersection

19

Page

20 Diagram Mentone Inter.
21
22 Diagram Menlo Inter.
23
24 Diagram Sierra Inter.
25
26 Diagram Euclid Inter.
27 ± " "
28 ± on Headers Fmt. to Chamourie
29 " " " Cham. to Euclid
30 Diagram Alley bet. Fmt. & Colonial
31
32 " " " Col. & High
33
34 " " " High & Cabr.
35
36 " " " Cabr. & Cham.
37
38 " " " Cham. & Mentone
39

Page

40 Diagram Alley bet. Mentone & Menlo
41
42 " " " Menlo & Sierra
43
44 " " " Sierra & Euclid
45
46
47
48
49
50
51
52
53
54
55
56
57 Alley Blls-1- Carmel Hts
58
59

Page

60

61

62

63

64

65

66

67

68

69

70

71

72

73

74

75

76

77

78

79

Gutters University Parking
Fairmount East

506

May 13, 10.
G. F. Hyatt
W. Brown
R. Brown

2

	+	H.I.	-	Elev	
B.M.	5.01	361.69		356.68	Brass plug in curb N.W. Colonial & Univ.
Gutter on Univ N.W.			5.69	356.0	0.70 intersection of Colonial & Univ
on Colonial N.W.			5.29	356.4	.20 "
on Univ S.W.			5.69	356.0	
on Colonial S.W.			5.89	355.4	0.5 Gutter
on Univ S.W.			5.89	355.0	0.65 "
on Univ S.E.			6.29	355.4	0.70 "
on Colonial S.E.			5.79	355.9	0.3 "
on Univ N.E.			6.19	355.5	0.70 "
on Colonial N.E.			5.69	356.0	0.15 "
N.W.			4.08	357.61	Alley bet Fairmount & Colonial
S.W.			4.63	357.06	
S.E.			4.80	356.89	
N.E.			4.30 ^r	357.89	
Gutter N.W.			7.26	354.43	0.75 Alley bet Highland & Colonial
S.W.			7.36	354.33	.75
B.M. Gutter on Univ	5.06	61.74		356.68	Brass plug N.W. Colonial & Univ
S.E.			6.14	55.6	.55 Gutter
S.W.			7.31	54.43	.65 " Alley bet Highland & Colonial

Gutters University Paving
Highland Ave. Intersection

Hyatt
W Brown

May 13/6

3

	±	H.L.	-	Elev	
B.M. Gutter Univ N.W.	5.42	357.70		352.28	Brass plug N.W. Highland & Univ. Gutter
N.W. on Highland			6.30	351.40	.85
Solaria S.W. on Univ			6.30	351.40	.80
S.W. on Highland			6.00	351.70	.85
S.E. on Univ			5.8	351.90	
S.E. on Highland			6.00	351.70	.80
S.E. on Univ			6.60	351.1	.90
N.E. on Highland			6.40	351.3	.80
N.E. on Univ			7.00	350.7	.10
Highland			6.90	350.8	.85 .8

N.W. Gutter on Univ.	5.54	57.82		352.28	Brass plug N.W. Highland & Univ.
			6.32	351.5	.75 revised
N.E. Univ. 50' E High.			6.02	351.8	.75 Gutter "
				50.43	.8

± on header

B.M. S.E.	6.73	59.01		352.28	
header S.W.			7.31	351.7	Raised to 351.8 & corrected when raked
header			6.71	352.3	

	+	H.L.	-	Flv	
B.M.	4.53	354.11		349.58	Brass plug in curb N.W. Cabrillo & Univ.
25' W of.					Gutter
N.W.			5.23	348.88	.85
25' W of.					
S.W.			5.37	348.74	.55
14' E of S.E.			5.37	348.74	.50
14' E of N.E.			5.20	348.91	.85

25' W of	4.57	54.15		349.58	Brass plug N.W. Cabrillo & Univ.
N.W. Cabrillo					
Univ.				349.0	.75 Gutter
14' E of					
N.E.				349.0	

± on header.

B.M.	4.84	354.42		349.58	Brass plug N.W. Cabrillo & Univ
14' E of					
E.L. Cab			4.92	349.5	
25' W of					
W.L. Cab.			4.92	349.5	
B.M.				349.56	BRASS " " " "
N.E. header					
14' E				349.6	
N.W.					
25' W					
header				349.6	

	+	H.I.	-	Elev.
B.M.	4.94	58.56		353.62
Gutter NW				
on Univ			5.96	352.60
N.W.			5.76	352.80
on Cham.			5.86	352.70
SW. on				
Univ.			6.06	352.50
SW on				
Chamoune			5.76	352.80
S.E. on				
Univ.			6.06	352.50
S.E. on				
Chamoune			5.76	352.80
N.E. on				
Univ.			5.96	352.60
N.E. on				
Chamoune			5.86	352.70

Brass plug NW Chamoune & Univ

.95 Gutter.

.8 gutter.

.5 Gutter.

.3 Gutter.

.5 Gutter.

.35 Gutter.

.20 Gutter

.65
.90 "

N.W.	4.99	58.61		353.62
			6.27	52.34
N.E. on				
Univ			5.91	52.7
N.E. on				
Chamoune			5.81	52.8

Brass plug NW Chamoune & Univ.

2.5' West of h.L. Chamoune N.L.

.8

.75 Gutter

+ on header. Corners set to grade & cuts from top of rail raked in.

B.M.	4.97	58.59		353.62
S.E.				
header			5.39	353.20
S.W.				
header			5.39	353.20

Brass plug NW Chamoune & Univ

	+	H.I.	-	Elev.
B.M.	5.07	56.25		351.18
Gutter N.W.				
on Univ.			5.95	350.30
N.W. on				
Mentone				350.60
S.W. on				
Univ.			6.15	350.10
SW. on				
Mentone				350.40
SE. on				
Univ.			6.55	349.70
SE. on				
Mentone				350.00
NE. on				
Univ.			6.35	349.90
NE. on				
Mentone				350.50

Brass Plug N.W. Mentone & Univ.

.85 Gutter.

.5

.5

.8

B.M.	4.47	55.65		51.18
			5.02	

Brass plug N.W. Mentone & Univ

Drive 81 ft W of W.L. Mentone

B.M.	4.95	56.13		51.18
N.W.				
Univ.			5.73	50.40

Brass plug N.W. Mentone & Univ.

.8 gutter

± on headers corners set to grade + cuts raked in taken from top of rail.

B.M.	4.55	55.73		351.18
S.E.				
header			5.23	350.50
SW.				
header			4.83	350.90

Brass plug N.W. Mentone & Univ.

Gutters Menlo & University

Hyatt June 12
W. Brown 18
Chandler 7

	+	H.I.	-	Elev.
B.M.	5.30	48.38		343.08
N.W. on Univ.			6.08	42.3
N.W. on Menlo			6.18	342.20
S.W. on Univ.			6.08	42.3
S.W. on Menlo			6.18	342.20
SE on Univ.			6.68	341.70
SE on Menlo				341.90
N.E. on Univ.			6.68	341.70
N.E. on Menlo				341.90

Brass Plug N.W. Menlo & Univ.

.8 Gutter

.75 Gutter

.8 "

.85 "

± stakes for pre. grades

B.M.	5.35	348.43		343.08
S.E. Header		6.13	6.13	42.3
S.W. Header		5.53	5.53	42.9

Carriers set to grade & cuts from top of rail raked in.
Brass plug N.W. Menlo & Univ.

Hyatt July 18
Brown
Mc Bain

B.M.	5.31	48.39		343.08
S.W. header			5.49	342.90
header	4.75	47.83		43.08
N.E.			5.43	42.4
N.W.			4.83	43.0

Brass plug N.W. Menlo & Univ.

Set at 43.2 & Rod Corrected .3

Brass plug N.W.

cut 0.5 top rail

Gutters Sierra & University.

	+	H.I.	-	Elev.
B.M.	4.63	4616		341.53
N.W. on Univ			5.46	340.70
N.W. on Sierra				340.70
S.W. on Univ			5.76	340.40
S.W. on Sierra				340.40
S.E. on Univ			5.86	340.30
S.E. on Sierra				339.80
N.E. on Univ			5.76	340.40
N.E. on Sierra				340.50

Preliminary Headers =

S.E. header	4.80	346.33		341.53	
S.W. header			5.33	341.0	C-0.1
N.E. header			5.03	341.3	C-0.1
B.M.	4.69	46.22		41.53	
N.W. header			5.12	41.1	
N.W. header			4.82	41.4	

Hyatt June 12, 18.
W Brown
Chandler

8

Brass Plug N.W. Sierra & Univ.

.8 gutter.

.5 "

.25 "

.6

Brass plug N.W. Sierra

Brass plug N.W. Sierra.

Gutters Euclid & University

	+	H.I.	-	Elev.
BM	4.81	45.44		340.63
N.W. on Univ.			5.54	339.90
N.W. on Euclid				339.70
S.W. on Univ.			5.94	339.50
S.W. on Euclid				339.30

F

Header C & F. Stakes

B.M.	5.32	345.95		340.63
S.W. Header		5.55		340.4 C.O.1
B.M.	5.23	45.86		340.63
N.W. header			5.36	40.5

Hogatt June 12, 18.
W Brown
Chandler

9

Brass Plug N.W. Euclid & Univ.

.6 Gutter.

.5

Brass Plug N.W. Euclid & Univ.

Brass plug N.W. Euclid "

± header Colonial Inter.

	+	H.I.	-	Elev.
N.W. B.M.	4.86	361.54		356.68
N.E. header			5.34	356.2
S.W. header			4.94	356.6

Brass plug N.W. Colonial & Univ.

Alley bet. Colonial & High.

B.M.	6.73	359.01		352.28
W header			3.98	55.03

Brass plug N.W. Highland & Univ.

Colonial Intersection

B.M.				356.68
S.W. header				356.1
N.W. header				356.6

Hyatt
Brown July 15/18.

Highland Intersection

N.E. header				352.28
N.W. header				51.5
N.W. header				52.1

Chamaine Intersection

B.M.				353.62
N.E. header				53.3
N.W. header				53.3

Brass Plug N.W. Chamaine & Univ.

+ stakes on headers.

Mentone Intersection

+ H.L. - Elev

B.M.	351.18
N.E.	
header	50.6
N.W.	
header	51.0

11
Brass plug N.W. Mentone & Univ.

Colonial

B.M.	4.79	61.47	56.68
	3.94	60.62	56.68
	4.17	60.85 41	56.68
	4.31	60.99	56.68
	4.47	61.15	56.68
	4.25	60.93	56.68
	4.18	60.86	56.68
	4.51	61.19	56.68
	4.76	61.44	56.68
	4.46	61.14	56.68

Highland

4.69	56.97	52.28
4.23	56.51	52.28
4.15	56.43	52.28
4.35	56.63	52.28
4.12	56.40	52.28
4.09	56.37	52.28
4.04	56.32	52.28
4.08	56.36	52.28
4.05	56.33	52.28
4.10	56.38	52.28
4.94	57.22	52.28
4.77	57.05	52.28
4.46	56.74	52.28

Cabrillo

	+	H.I.	-	ELEV
B. M.	5.09	54.67		49.58
	4.01	53.59		49.58
	4.52	54.10		49.58
	4.34	53.92		49.58
	4.56	54.14		49.58
	4.51	54.09		49.58
	4.33	53.91		49.58
	4.77	54.35		49.58
	4.49	54.07		49.58
	4.24	53.82		49.58
	4.60	54.18		49.58
	5.21	54.79		49.58

Chamoune

B.M.	T	H.L.	Elev
	4.86	58.48	53.62
	4.31	57.93	53.62
	4.27	57.89	53.62
	4.44	58.06	53.62
	4.52	58.14	53.62
	4.34	57.96	53.62
	4.30	57.92	53.62
	3.90	57.52	53.62
	4.16	57.78	53.62
	4.64	58.26	53.62
	4.24	57.86	53.62
	4.26	57.88	53.62
	4.46	58.08	53.62
	4.44	58.06	53.62
	5.05	58.67	53.62
	4.75	58.37	53.62

	Mentone		Elev
	+	H.I.	-
B.M.	53.33		351.18
B.M.	3.53	54.71	351.18
B.M.	4.16	55.34	51.18
B.M.	4.00	55.18	51.18
	4.33	55.51	51.18
	3.97	55.15	51.18
	4.26	55.44	51.18
	3.99	55.17	51.18
	3.90	55.08	51.18
	4.52	55.70	51.18
	4.36	55.54	51.18
	4.06	55.24	51.18
	4.14	55.32	51.18
	5.48	56.66	51.18

Menlo

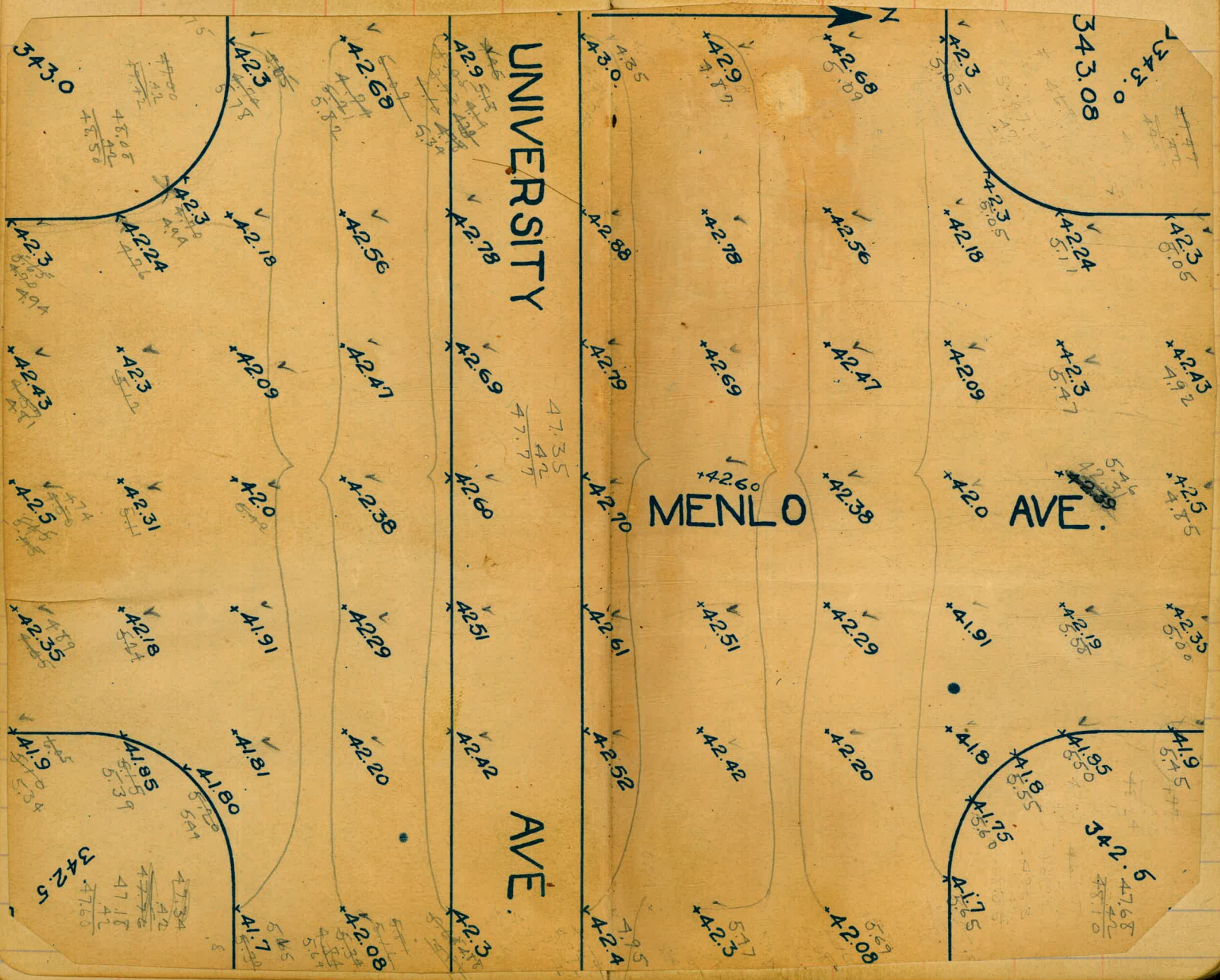
B.M.	4.87	47.95	43.08
	4.10	47.18	43.08
B.M.	3.75	46.83	43.08
	4.60	47.68	43.08
B.M.	3.92	47.00	43.08
	4.16	47.24	43.08
	3.42	46.50	43.08
	4.39	47.47	43.08
	4.74	47.82	43.08
	4.27	47.35	43.08
	5.00	48.08	43.08
	4.26	47.34	43.08
	4.55	47.63	43.08
	4.07	47.15	43.08
	3.96	47.04	43.08
	4.27	47.35	43.08

UNIVERSITY

MENLO

AVE.

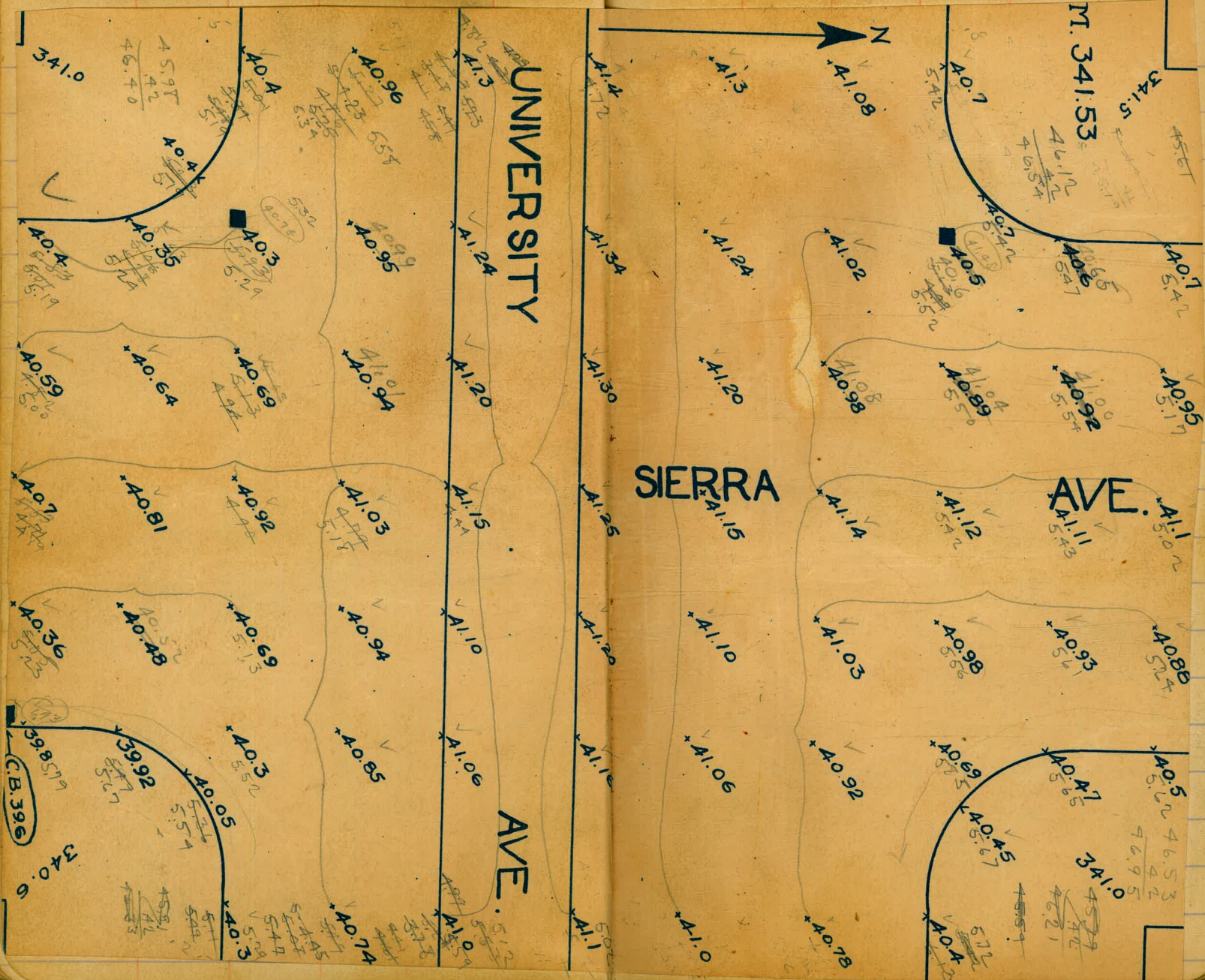
AVE.



	+	Sierra H.I.	H.I.	Elev
B.M.	4.70	46.23		341.53
B.M.	3.25	344.78		41.53
B.M.	3.88	45.41		41.53
	4.10	45.63		41.53
	5.00	46.53		41.53
	4.26	45.79		41.53
	4.35	45.88		41.53
	4.38	45.91		41.53
	4.95	45.98		41.53

Catch-basins West side Sierra

B.M.	4.05	45.58		341.53
Top of pipe North Univ.			6.76	
Top of pipe South Univ.			7.79	
C.B. North side			4.98	40.6
C.B. South side			5.28	40.3
	4.08	45.61		41.53



UNIVERSITY

SIERRA

AVE.



M. 341.53

AVE.

341.0

341.0

(C.B. 396)

340.6

45.97
42
46.40

46.12
46.54

46.53
42
46.95

40.4

40.4

40.4

*A0.96

*A1.3

*A1.3

*A0.7

341.5

40.4

40.35

40.3

*A0.95

*A1.24

*A1.24

*A0.5

*A0.7

*A0.59

*A0.64

*A0.69

*A0.94

*A1.20

*A1.20

*A0.98

*A0.92

*A0.7

*A0.81

*A0.92

*A1.03

*A1.15

*A1.15

*A1.14

*A1.12

*A0.36

*A0.48

*A0.69

*A0.94

*A1.10

*A1.10

*A1.03

*A0.98

*A0.3

*A0.05

*A0.85

*A0.94

*A1.06

*A1.06

*A0.92

*A0.5

*A0.3

*A0.74

*A0.74

*A1.0

*A1.0

*A1.0

*A0.4

*A0.5

45.97
42
46.40

45.97
42
46.21

40.4

40.4

40.4

*A0.96

*A1.3

*A1.3

*A0.7

341.5

40.4

40.35

40.3

*A0.95

*A1.24

*A1.24

*A0.5

*A0.7

*A0.59

*A0.64

*A0.69

*A0.94

*A1.20

*A1.20

*A0.98

*A0.92

*A0.7

*A0.81

*A0.92

*A1.03

*A1.15

*A1.15

*A1.14

*A1.12

*A0.36

*A0.48

*A0.69

*A0.94

*A1.10

*A1.10

*A1.03

*A0.98

*A0.3

*A0.05

*A0.85

*A0.94

*A1.06

*A1.06

*A0.92

*A0.5

*A0.3

*A0.74

*A0.74

*A1.0

*A1.0

*A1.0

*A0.4

*A0.5

45.97
42
46.40

45.97
42
46.21

40.4

40.4

40.4

*A0.96

*A1.3

*A1.3

*A0.7

341.5

40.4

40.35

40.3

*A0.95

*A1.24

*A1.24

*A0.5

*A0.7

*A0.59

*A0.64

*A0.69

*A0.94

*A1.20

*A1.20

*A0.98

*A0.92

*A0.7

*A0.81

*A0.92

*A1.03

*A1.15

*A1.15

*A1.14

*A1.12

*A0.36

*A0.48

*A0.69

*A0.94

*A1.10

*A1.10

*A1.03

*A0.98

*A0.3

*A0.05

*A0.85

*A0.94

*A1.06

*A1.06

*A0.92

*A0.5

*A0.3

*A0.74

*A0.74

*A1.0

*A1.0

*A1.0

*A0.4

*A0.5

45.97
42
46.40

45.97
42
46.21

40.4

40.4

40.4

*A0.96

*A1.3

*A1.3

*A0.7

341.5

40.4

40.35

40.3

*A0.95

*A1.24

*A1.24

*A0.5

*A0.7

*A0.59

*A0.64

*A0.69

*A0.94

*A1.20

*A1.20

*A0.98

*A0.92

*A0.7

*A0.81

*A0.92

*A1.03

*A1.15

*A1.15

*A1.14

*A1.12

*A0.36

*A0.48

*A0.69

*A0.94

*A1.10

*A1.10

*A1.03

*A0.98

*A0.3

*A0.05

*A0.85

*A0.94

*A1.06

*A1.06

*A0.92

*A0.5

*A0.3

*A0.74

*A0.74

*A1.0

*A1.0

*A1.0

*A0.4

*A0.5

45.97
42
46.40

45.97
42
46.21

40.4

40.4

40.4

*A0.96

*A1.3

*A1.3

*A0.7

341.5

40.4

40.35

40.3

*A0.95

*A1.24

*A1.24

*A0.5

*A0.7

*A0.59

*A0.64

*A0.69

*A0.94

*A1.20

*A1.20

*A0.98

*A0.92

*A0.7

*A0.81

*A0.92

*A1.03

*A1.15

*A1.15

*A1.14

*A1.12

*A0.36

*A0.48

*A0.69

*A0.94

*A1.10

*A1.10

*A1.03

*A0.98

*A0.3

*A0.05

*A0.85

*A0.94

*A1.06

*A1.06

*A0.92

*A0.5

*A0.3

*A0.74

*A0.74

*A1.0

*A1.0

Sierra

	+	HI	-	Elev
BM	4.29	45.82		341.53
	4.06	45.59		41.53
	4.59	46.12		41.53

Euclid

	+	H.I.	-
BM BM	4.92	345.55	340.63
	5.48	46.11	40.63
	4.01	44.64	40.63
	4.52	45.15	40.63
	4.37	45.00	40.63
	4.51	45.14	40.63
	4.20	44.83	40.63
	5.22	45.85	40.63
	4.42	45.05	40.63
	4.60	45.23	40.63
	4.69	45.32	40.63
	4.93	45.56	40.63
	4.83	45.46	40.63

15

Curb 340.5
M. 340.63

AVENUE

EUCLED

Curb 340.2



± Euclid Intersection

	+	H.L.	-	Flev	Grade	
B.M.	5.26	345.89		340.63		Brass plug N.W. Euclid & Univ.
on Univ N. Gutter			4.1	41.89	340.45	+ 1.45
S "			4.5	41.39	340.45	+ 0.9
E.L. center on Univ			4.9	41.00	341.15	- 0.1
N. Gutter			5.00	340.89	40.45	+ 0.4
on Euclid N. Gutter			4.6	41.3	340.2	+ 1.1

± Stakes Headers
Corners set to grade & ± raked in.

Fairmount to Colonial.

	North	South	
0+50	0.0	0.0	0.0
1+25	+0.1	+0.1	4"
1+70	+0.1	+0.1	1"
2+20	+0.1	+0.1	1"

For Car grades see page 10

Colonial to Highland

For corner grades see page 10

0+50	+0.3	+0.3	4"
1+00	+0.3	+0.2	4"
1+70	+0.4	+0.3	5"
2+20	+0.4	+0.4	5"

Highland to Cabrillo

for corner grades see pages 10 & 4

0+50	+0.5	+0.4	
1+00	+0.5	+0.4	
2+20	+0.3	+0.4	

Cabrillo to Chamoune

for corner grades see page 4 & 10

	South	North	Inches
0+50	+0.4	+0.5	5"
1+00	+0.3	+0.4	4"
1+45	+0.2	+0.3	2½"
1+95	+0.2	+0.3	2½"
2+45	+0.2	+0.3	2½"

± stakes on Header
Corners set to grade + 1 raised.

Chamaune to Mentone

for corner grades see page 18

	South	North	Inches
0+75	+0.1	+0.2	1"
1+25	+0.2	+0.3	2 1/2"
1+70	+0.1	+0.2	2"
2+45	+0.2	+0.3	2 1/2"

Mentone to Menlo

for corner grades see pages

0+50	+0.1	+0.2	1"
1+00	+0.2	+0.3	2 1/2"
1+45	+0.3	+0.4	4"
2+20	+0.3	+0.4	4"

Hyatt
Brown

July 1918

29

Menlo to Sierra
North South Inches

0+50	+0.4	+0.5	5"
1+00	+0.3	+0.4	4"
1+45	+0.3	+0.4	4"
2+95	+0.2	+0.3	2 1/2"

Sierra to Euclid.

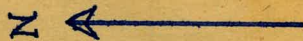
North South

0+50	0.0	+0.1
1+00	0.0	+0.1
1+45	0.0	+0.1
1+95	0.0	+0.1
2+45	0.0	+0.1

	+	-	
B.M	5.49	62.17	56.68 Colonial
NW Curb		3.77	58.40
NE		3.93	58.24
SW		4.57	59.60
SE		4.60	57.57
	5.83	62.51	56.68

June 20th F.H.

62.51
72
62.93



B.M

NW C

NE

SW

SE

R-0.10
C-.14

58.24
358.14

58.10
4.07
+ .11

62.65

58.15
+ .61

58.43
6.43

x 57.85

x 58.02

UNIVERSITY AVENUE.

x 57.88

x 57.67
57.63

62.17
72
62.59

62.17
72
62.59

R-.20
C-.07

0.3% →

57.57
357.37

57.00
56.89

57.34
4.50
6.57

57.10
57.55

57.35
57.35

58.16
58.36
x .36

358.37
57.40

0.16

57.61

R-.03
C-.27

57.60
57.60

357.53
57.60

R-.07
C-.13

Grade Sheet of Alley

between Fairmount and Colonial.

B.M.	8.40	60.68	52.28	(Highland)
"	3.77	60.45	56.68	(Colonial)
"	3.28	59.96	56.68	"
"	4.70	61.38	56.68	"
SW Curb		5.88	55.50	
SE		6.37	55.01	
NW "		5.91	55.47	(not there)
NE "		6.26	55.12	
B.M.	7.08	59.36	52.28	Highland
	6.94	59.22	52.28	
B.M.	2.28	59.96	56.68	Colonial
B.M.	7.59	59.87	52.28	Highland.

Revised
Apr. 12, 18
W.C.B.

B.M.

R-42
C-1.0



53.96
+2
57.38

59.96
-92
60.38

R-35
C-0.6

0.16 76

S.W. C

55.12
354.70

54.79

50.16
50.82
50.84

S.E.

55.00
3.96 477

N.W.

N.E.

B.M.

B.M.

B.M.

54.6
54.4
50.7

54.28
54.07
x 54.61

x 54.61

54.85

61.38
42
61.80

60.86

59.77
42
60.29

59.12
54.36
54.42
54.78

54.75

x 54.53

0.33 9

54.07

55.01
354.66

59.96
50.84

58.24
58.45

54.6
54.25

55.10
55.57
4.77

355.10

54.43
54.33
54.44
54.44

x 54.82
4.56

55.05
3.96

59.12

x 54.75

54.81
54.71
5.57
8.28

54.6
54.25

355.00
55.50

59.96
50.84

R-0.5
C-0.3

UNIVERSITY AVENUE.

Grade Sheet of Alley

between Colonial and Highland

K on W. Line.

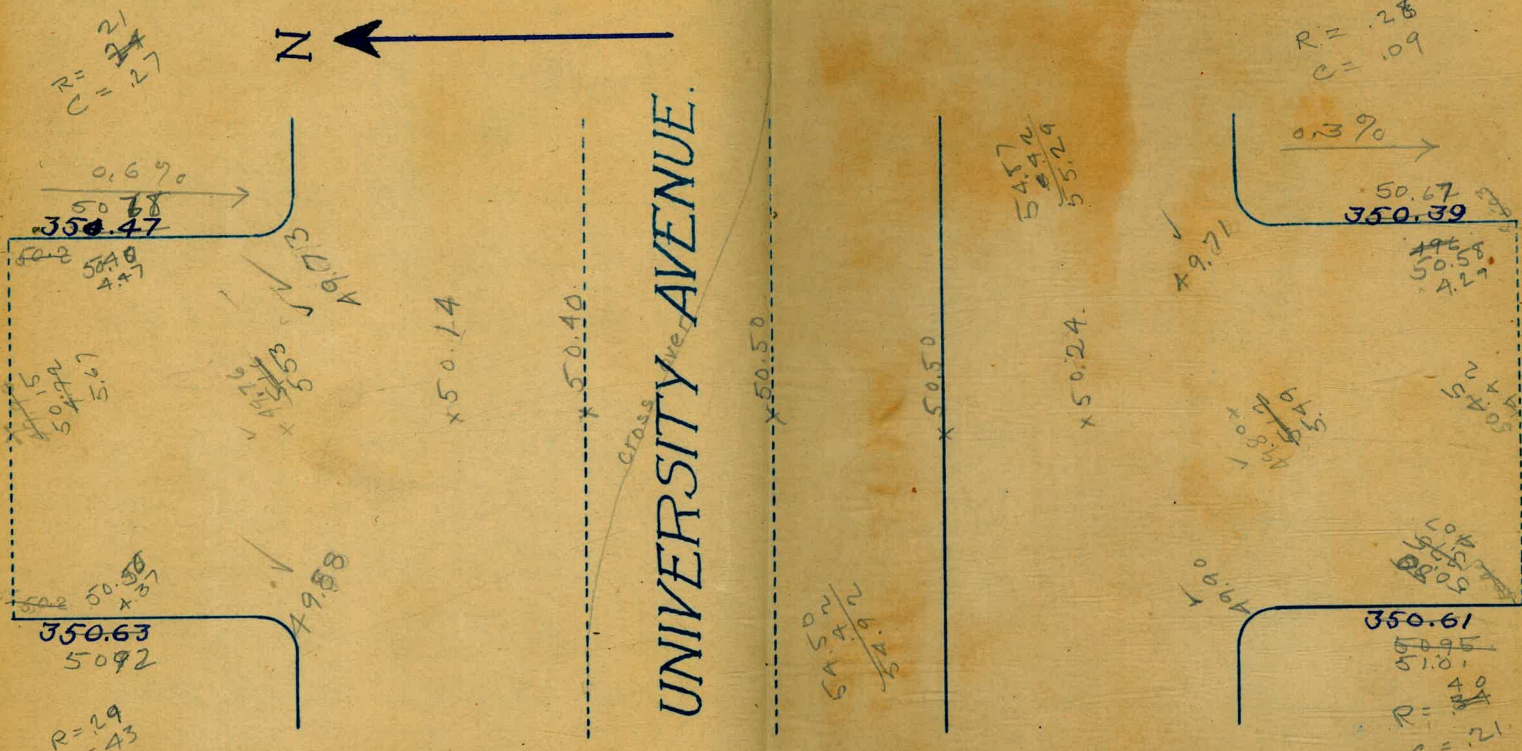
60.68
41
60.9

60.45
42
60.87

	+	H.I	-	Elev	
B.M	492	54.50		49.58	Cabrillo
NW. Curb.			3.63	50.87	
NE "			3.89	50.61	
S.W. "			3.55	50.95	
SE "			3.78	50.62	
	2.59	54.87		52.28	Highland
N.W. Curb			3.95	50.92	
NE "			4.19	50.68	
SW "			3.86	51.01	
SE.			4.20	50.67	
			5.25	49.62	
B.M	624	55.82		49.58	Cabrillo
			3.57	52.25	

Revised April 11, 1918
W.C.B.

B
NW
NE
SW
SE
NW
NE
SW
SE
B



55.82

Alley
Between Cabrillo & Chamourne

+ HI - Elev.

B.M. 2.35 55.97 53.62 Chamourne

NW Curb 4.18 51.79

NE 3.83 52.14

SW 4.75 51.22

SE 4.38 51.59

B.M. 2.56 56.18 53.62 Chamourne

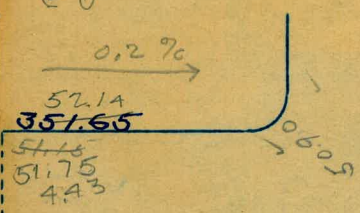
6.57 ^{Should be 49.58} 49.61 (B.M. Cabrillo)

2.71 56.33 53.62 (Chamourne)

657



B.M.
NW C
NE
SW
SE
B.M.



x 51.03

x 51.25

UNIVERSITY AVENUE.

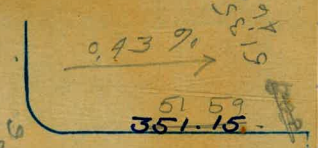
x 51.35

x 51.25

56.18
42
51.35620

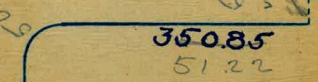
55.97
50.3

R = .44
C = .25



x 50.99

R = .37
C = .05

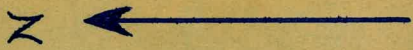


Grade Sheet of Alley
between Cabrillo and Chamoune.

Alley
Between Chamoune & Mentone

BM	3.07	56.69	53.62 (Chamoune)
	5.55	56.73	51.18 (Mentone)
N.W. Curb		3.98	52.75
N.E. Curb		4.15	52.58
S.W.		4.39	52.34
S.E.		4.58	52.15
BM	4.01	57.63	53.62 (Chamoune)*

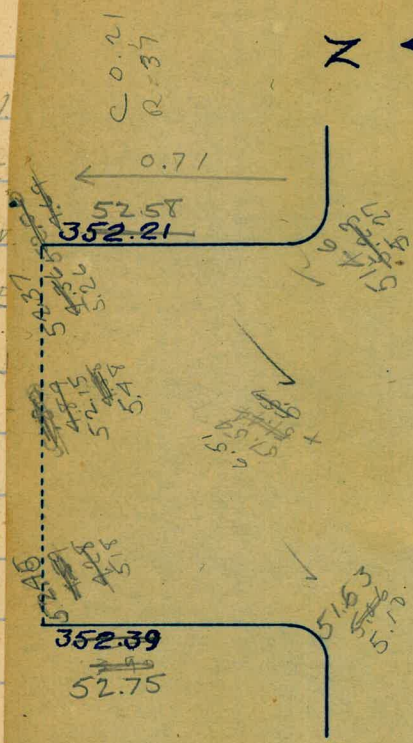
June 6/18
G.F.H.



UNIVERSITY AVENUE.

Grade Sheet of Alley
between Chamoune and Mentone.

B.
N.W.
N.E.
S.W.
S.E.
B.

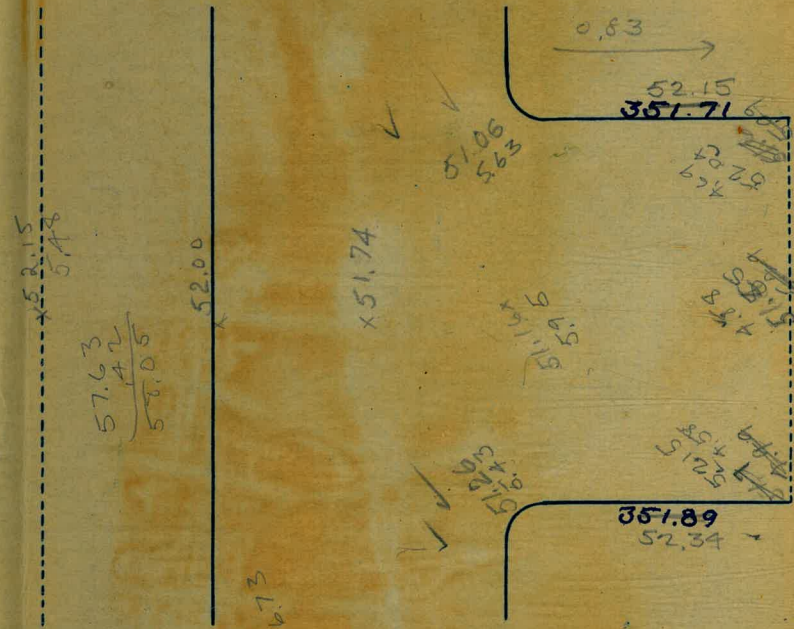


C.O. 29
R. 36
56.69
42
57.11

53.0
53.0
53.0
21037
51.85

50.9
53.2
21041
62.05

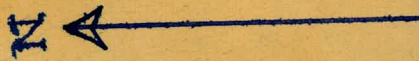
C.O. 11
R. 44



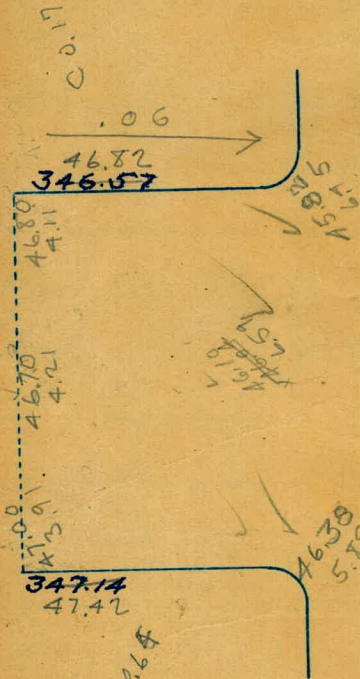
C.O. 19
R. 45

Between Mentone & Menlo.

	+	-	Elev	
B.M.	9.19	52.27	43.07	(Menlo)
	8.90	51.48	43.08	(Menlo)
SW Curb		4.33	47.15	(Top curb)
SE Curb		4.84	46.64	" "
N.W.		4.06	47.42	" "
NE		4.66	46.82	" "
B.M.	7.73	50.91	43.08	Menlo
NW Curb		3.49	47.42	(Top)
NE		4.08	46.83	"



B.
SW
SE
N.W.
NE
B.
NW
N.E



x 46.43

x 46.66

x 46.75

(50.91)

x 46.65

x 46.39

UNIVERSITY AVENUE.



(H)

346.87
47.15

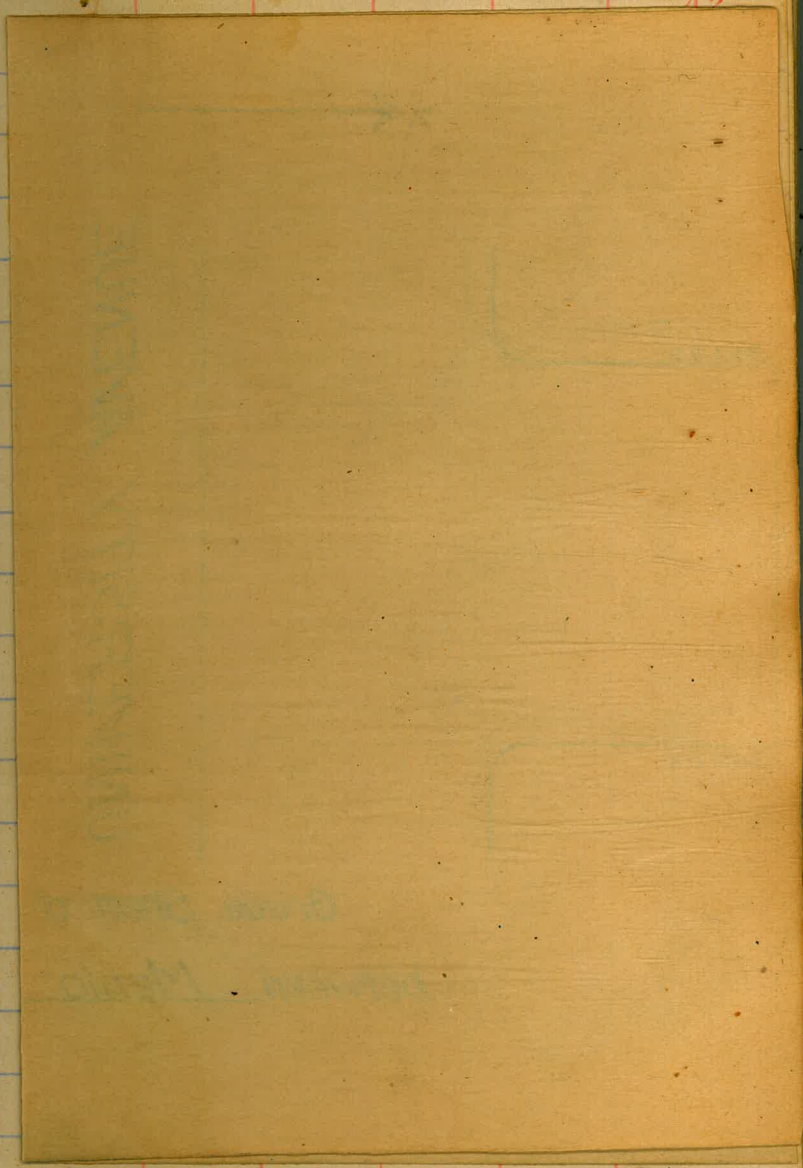
Grade Sheet of Alley

between Mentone and Menlo.

$$\begin{array}{r} 52.27 \\ 52.49 \\ \hline 52.69 \end{array}$$

Check
g.p.

B.M	272	45.80	43.08	Menlo
	477	46.30	43.08	Sierra
^s E. Curb			447	41.73
^s W. Curb			438	41.92
B.M	345	46.53	43.08	Menlo
NW. Curb			435	42.18
NE Curb			460	41.93



Between Sierra & Euclid

+ H.I. -

B.M. 4.91 45.54 40.63 (Euclid)

B.M. 4.51 45.14 40.63 "

B.M. 3.21 44.74 41.53 Sierra

N.W. curb prop 3.79 40.95

" Univ 3.96 40.78

N.E. top curb prop. 3.75 40.99

" curb Univ 3.97 40.77

N ←

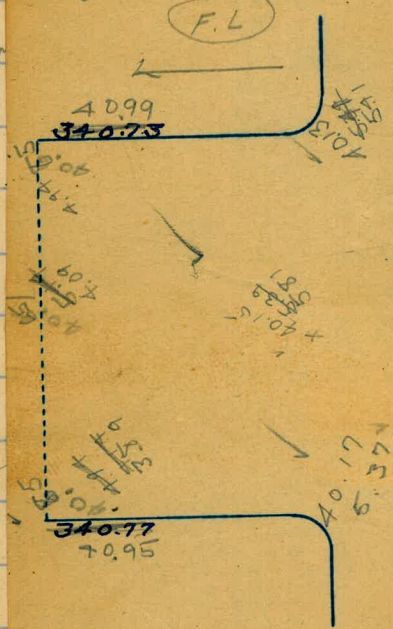
UNIVERSITY AVENUE.

Grade Sheet of Alley

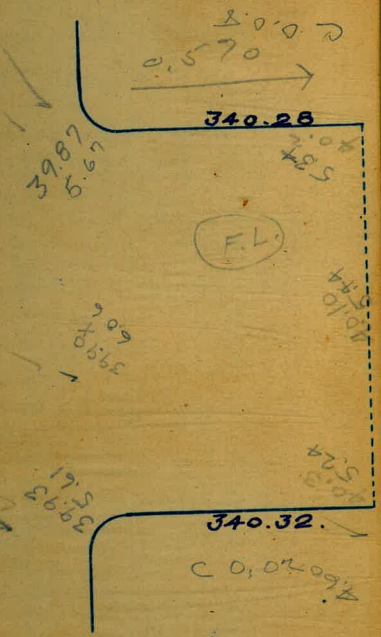
between Sierra and Euclid.

R = 26
C = 13

(F.L.)



$\frac{1.58}{4.54}$



~~45.57~~
~~44.74~~
~~44.74~~
R = 26
C = 13

Cross Section 40th St.
Landis to Dwight

Indexed
c.s. 10.

BM 0.58 342.67 348.09

N.W. CP
Wright man
40th St

TP 2.66 332.48 12.85 330.82

0+0 = 14 = 8 Cb Landis

+14 Cb Top 3.32 330.16

+14 Top Cb. 3.51 329.97

+40 1/2 Cb Top 3.82 329.65

+60 Cb Top 1/2 Drain 3.99 329.49

Bottom Drain 4.93 328.55

+72 = Fly Drain 1/2 Bot. 5.12 328.36

Top Cb. 4.32 329.16

+80 = F.L. 3.78 329.70

0+0 = 5 L Landis

F 5.1 328.4

+14 = 1/2 Open Drain F.L. 6.33 327.15

+25 3.8 329.7

+40 = 1/2 3.7 329.8

+65 3.7 329.8

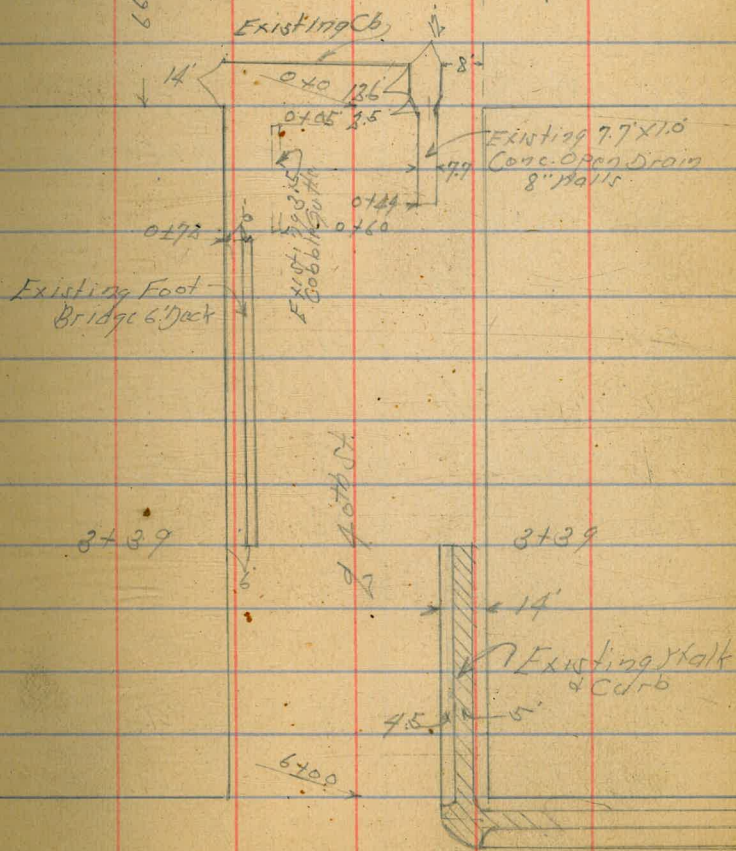
+80 = 1/2 3.5 330.0

Nov. 24. 39
Sisson
Hortberry
Osborne

47

Landis

St.



Dwight

St.

333.48

0+05

HL	4.3	329.2
+15 = 1/4 Cobble Gutter	4.7	328.8
+40 = $\frac{1}{2}$	3.3	330.2
+55	5.1	328.4
+66 = $\frac{1}{2}$ Open Drain FL	8.46	325.02
+80 = FL	6.1	327.4

0+17

F.L.	17.1	316.4
+11 = $\frac{1}{2}$ Open Drain FL	18.005	315.48
+22	12.6	319.9
+40 = $\frac{1}{2}$	9.7	323.9
+47	9.2	324.3
+52	7.5	326.0
+65 = $\frac{1}{2}$ Cobble Drain	6.8	326.7
+80 = HL	6.9	326.6

0+35

HL	9.3	324.2
+15 = $\frac{1}{2}$ Cobble Drain	10.1	323.4
+30	11.4	322.1

48

333.48

+40 = $\frac{1}{2}$	16.0	317.5	
TP 0.69	321.34	12.83	320.65
+55	11.2	310.1	
+58	14.9	306.4	
+70 = $\frac{1}{2}$ Open Drain FL	17.0	304.3	
+80 = FL	16.3	305.0	

0+44 = $\frac{1}{2}$ Open Drain

10' W of FL $\frac{1}{2}$ Open Drain FL	20.8	300.5
---	------	-------

0+50

F.L.	23.8	297.5
+10	25.6	295.7
+25	20.2	301.1
+40 = $\frac{1}{2}$	10.0	311.3
+60	0.8	320.5
+66 = $\frac{1}{2}$ Cobble Drain	1.0	320.3
+80 = HL	0.4	320.9

0+60 = $\frac{1}{2}$ Cobble Drain

14' E of HL	2.4	318.9
-------------	-----	-------

321.34

0+72 = Fly Exposed Foot Bridge

W	4.2	317.1
+6 = Foot Bridge Deck	4.8	316.5
+10	6.0	315.3
+20	11.6	309.7
+40 = 8	17.3	304.0
+50	22.1	299.2
+65	27.5	295.8
+80 = F.L.	28.2	295.1

1+0

F.L.	32.0	288.3
+15	33.8	288.5
+28	39.0	292.3
+40 = 8	25.5	295.8
+50	22.4	299.9
+65	15.1	305.9
+80 = 11.6	11.8	309.5

TP	0.29	308.65	1298	308.36
----	------	--------	------	--------

308.65

1+25

W-L	8.1	300.5		
+15	18.1	295.5		
TP	11.9	292.14	12.70	295.95
+30	5.5	291.6		
+40 = 8	7.5	289.6		
+50	10.1	287.0		
+60	11.5	285.6		
+70	11.2	285.8		
+80 = F.L. Bot. Gulch	13.4	285.7		

1+40

F.L.	12.7	284.4
+9	12.6	284.5
+11 = Bot Gulch Fly	15.4	281.7
+19 " " Fly	15.4	281.7
+25	13.5	283.6
+40 = 8	11.6	286.5
+55	9.0	288.1
+65	5.9	291.4

297.14

+80 = FL	4.3	292.8
	17.55	
FL	7.2	289.8
+15	10.9	286.2
+25	13.5	283.6
+40 = FL	14.0	283.1
+50 = Bot Gulch	16.2	280.9
+55	14.0	283.1
+80 = FL	13.3	283.8

17.61

FL	13.5	283.6
+20	14.0	283.1
+35	14.8	282.3
+40 = FL = Bot Gulch	15.5	280.6
+47	14.8	282.3
+60	13.8	283.3
+80 = FL	10.9	286.2

297.14

	17.67	
FL	12.9	284.2
+15	14.4	282.7
+25	15.2	281.9
+30 = Bot Gulch	17.0	280.1
+40 = FL	15.2	281.8
+60	13.9	283.7
+80 = FL	13.2	283.9

17.97

FL	2.2	294.9
+30	15.0	282.1
+40 = FL	16.3	80.8
+60	16.3	280.8
+80 = FL	16.8	280.3
	3+2.5	
FL	14.3	282.8
+15	10.6	286.5
+30	6.3	290.8
+40 = FL	2.1	292.0

297.14

+50		2.8	294.3
+65		+4.0	301.1
+80 = F.L.		+9.8	306.9
TP	12.68	309.59	0.22
TP	11.16	320.73	0.02
	2+50		309.57
F.L.		2.1	318.6
+20		9.3	311.4
+30		10.6	310.1
+40 = 2		14.8	305.9
+55		19.6	301.1
+65		23.0	297.7
+80 = Y.L.		26.5	294.2
	2+75		
Y.L.		19.4	301.5
+15		15.4	305.3
+25		12.3	308.4
+40 = 2		6.1	314.6
+48		5.7	315.1
+55		+2.6	323.5

320.73

+80 = F.L.		+2.6	324.3
		3+0	
F.L.		+5.8	326.5
+20		+5.3	326.0
+40 = 2		2.7	318.0
+50		3.2	317.5
+65		9.0	311.7
+80 = Y.L.		11.4	309.3
	3+20		
Y.L.		4.1	316.6
+15		2.6	318.1
+25		0.0	320.73
TP	12.71	322.90	0.54
+40 = 2		11.1	321.8
+55		6.0	326.9
+65		5.2	327.7
+80 = F.L.		5.5	327.4

332.90

3+39

EL	4.1	328.8
+14 = 1/4 S.W. + CB	4.07	328.83
Gutter	5.0	327.9
+25	4.6	328.3
+40 = 1/2	4.4	328.5
+60	4.9	328.0
+65	6.4	326.5
+74 = 8 1/2 Foot Bridge on Deck	4.9	328.0
+80 = 1/2	5.0	327.9
	4+0	
1/2	4.4	328.5
+14	4.4	328.5
+17	5.4	327.5
+40 = 1/2	4.5	328.4
+66 Gutter	4.8	328.1
Top CB	4.26	328.64
+80 = EL	4.0	328.9

332.90

4+50

EL	3.9	329.0
+14 - CB Top	4.40	328.50
Gutter	5.1	327.8
+40 = 1/2	4.3	328.6
+65	5.3	327.6
+67	4.3	328.6
+80 = 1/2	4.2	328.7
	5+0	
1/2	4.0	328.9
+15	5.0	327.9
+40 = 1/2	4.4	328.5
+66 = Gutter	5.1	327.8
CB Top	4.58	328.32
+80 = EL	4.1	328.8
	5+50	
EL	4.3	328.6
+14 CB Top	4.91	328.19
Gutter	5.2	327.7

322.90

+40 = ~~4~~ 4.7 328.2

+64 = 4.9 328.0

+80 = ~~ML~~ 3.8 329.1

640 = H.L. Drift

ML 4.0 328.9

+16 4.7 328.2

+40 = ~~4~~ 4.8 328.1

+66 = Gutter EL Drain 5.53 327.37

C6 Top 4.91 327.99

+80 = EL 4.5 328.4

BM 5.33 327.59

SW. SP
Drift + 4 ft
327.59

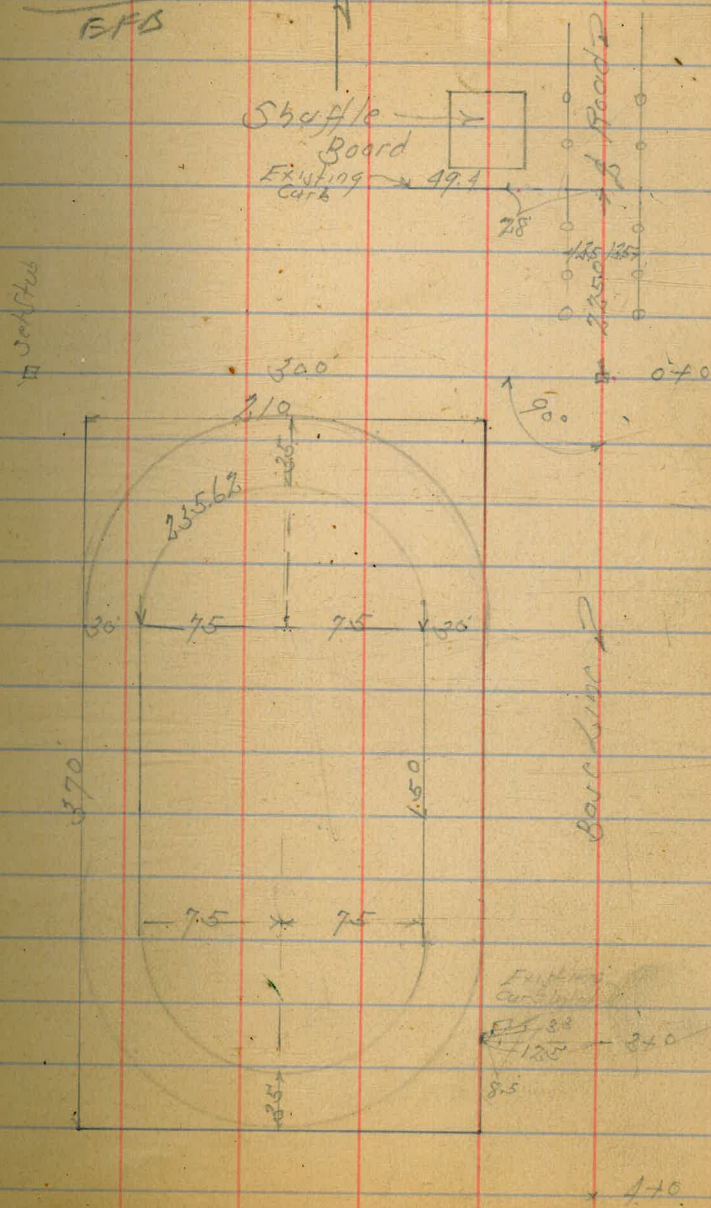
Proposed Bicycle Track
 Recreation Area Balboa Park
 Overstreet at Arizona

Levels Next Page

Grades See Page 60

March 29-40
 S.W. May
 Northern
 W. Moore
 INDEXED
 E.F.D.

Arizona Street 54



Levels Proposed Bicycle Track

St-E

Base
270.2

277.3

Rt-H

55

1750

273.3 271.7 271.1 270.3 269.6 269.8 269.9 270.2 270.4 270.9 276.3
 40 50 50 70 77 75 74 71 69 64 18
 50 0 5 10 50 100 150 200 250 300 350

170

271.0 271.2 270.2 270 270.1 270.2 270.5 271. 276.9
 6.8 61 72 72 72 72 68 63 2.4
 25 0 30 50 100 150 200 250 300 350

0750

269.4 290.7 271.4 270.2 270.1 270.2 270.3 270.6 272.5 274.3
 79 66 59 71 72 71 70 67 48 30
 25 0 25 40 50 100 150 200 250 300

070

268.1 269.4 270.3 271.4 271. 270.7 271. 271.9 272.8 274.8 274.6
 92 79 70 59 63 64 63 54 45 2.5 3.07
 15 15 0 35 50 100 150 175 200 250 300
 out

277.26

TP 7.04 277.26 509 270.22

0750
St-E

TP 7.55 275.31 502 267.76

BM 2.83 272.78 269.95

NW B.P.
Up 274.4
Rt 13000

41 86 AH

410

268.2 268.7 269.3 269.3 270.1 273.8
 91 86 80 80 73 35 4.0
 150 170 185 200 250 300 350
 Road

3750

267.9 269.5 269.9 270.8 272.7 273.5
 94 78 74 65 46 38
 150 200 250 275 300 350
 Road

3730

266. 266.2 266.6 267.6 268.6 269.6 270 270.8 271.7 273.6 273.8
 113 111 107 97 87 77 73 65 56 37 35
 40-100 50 100 150 200 250 300 330 340 350
 Dr. Road Road 2 Road

370

270 270.8 270.6 270.2 269. 269. 269. 269. 269. 269. 269. 269. 270. 270.8 270.9
 7.3 6.5 6.7 7.1 8.3 8.3 8.3 8.3 8.1 8.3 7.7 7.6 7.0 6.5 4.4
 30 10 50 100 150 200 250 300 300 300 300 300 300 300 350
 Col. 100 150 200 250 300 300 300 350
 Top

3750

272 271.8 270.9 269.2 269.3 269.4 269.5 269.9 270 270.3 270.4 273.8
 62 55 57 8.1 8.0 7.9 7.8 7.4 7.2 7.0 6.9 3.5
 30 10 50 100 150 200 250 300 300 300 350

270

272.7 272.5 271.5 271.3 269.6 269.6 269.7 269.8 270.1 270.4 270.6 274.9
 50 40 50 50 77 77 76 75 72 69 67 3.4
 30 100 150 200 250 300 300 300 300 350

277.26

277.26

Re Cross Section Alley Block / Carmel Hts -
 Palms to Redwood bet. 32nd & Bancroft

March 29 40
 Sisson
 Hartberg
 W Moore

57

Original Section 1384 Page 58

15' wide
 INDEXED
 EPB

30934

HEBP
 Palm 32nd

BM	5.34	309.34	304.00		0+57		
		0+0 = H.L. Palm		H		3.6	305.7
W Top Cb		4.55	304.79	L		3.6	305.7
Gutter on Pavement		4.80	304.54	F		3.5	305.8
L		5.14	304.20		0+79		
Gutter "		4.76	304.58	F		3.2	306.1
F Top Cb		4.62	304.72	L		3.4	305.9
		0+10		H		3.4	305.9
F		4.5	304.8		0+99		
L		4.7	304.6	H		3.1	306.2
H		4.6	304.7	L		3.1	306.2
		0+20		F		3.0	306.3
H		4.4	304.9	F 07 Conc. Apron		2.29	307.05
L		4.4	304.9		1+06		
F		4.3	305.0	F		2.8	306.5
		0+49		L		3.0	306.3
F		3.6	305.7	H		3.0	306.3
L		3.7	305.6				
H		3.7	305.6				

309.34

1+35

W	2.9	306.4
♀	2.8	306.5
F	2.7	306.6

1+55

F	2.5	306.8
♀	2.7	306.6
W	2.7	306.6

1+70

W	2.6	306.7
♀	2.5	306.8
F	2.4	306.9

2+0

F	2.2	307.1
♀	2.4	306.9
W	2.4	306.9

2+53

W	2.1	307.2
♀	2.0	307.3

309.34

F	1.8	307.5
TP	6.06	312.57

3+0

F	5.7	307.9
♀	5.9	307.7
W	5.9	307.7

3+28

W	5.7	307.9
♀	5.7	307.9
F	5.6	308.0

3+50

F	5.3	308.3
♀	5.4	308.2
W	5.5	308.1

3+90

W	5.2	308.4
♀	5.0	308.6
F	4.9	308.7

313.57

4+15

F	4.8	308.8
S	5.0	308.6
W	5.1	308.5

4+26

W	5.1	308.5
S	4.9	308.7
F	4.8	308.8

4+60

F	4.5	309.1
S	4.6	309.0
W	4.6	309.0

5+0

W	4.4	309.2
S	4.4	309.2
F	4.3	309.3

5+27

F	4.4	309.2
S	4.6	309.0

313.57

W	4.6	309.0
---	-----	-------

5+50

W	4.9	308.7
S	4.9	308.7

F	4.8	308.8
---	-----	-------

5+85

F	5.7	307.9
---	-----	-------

S	6.0	307.6
---	-----	-------

W	6.1	307.5
---	-----	-------

5+90

W	6.4	307.2
---	-----	-------

S	6.2	307.4
---	-----	-------

F	6.1	307.5
---	-----	-------

5+99 = S.L. Redwood

F Topcb	5.42	308.15
---------	------	--------

Gutter on Pavine	6.01	307.56
------------------	------	--------

S	6.59	306.98
---	------	--------

Gutter " "	6.71	306.86
------------	------	--------

W Topcb	6.59	306.98
---------	------	--------

	inside	outside	27679K	inside	outside
11	270.07 $\begin{matrix} 6.7 \\ 6.5 \\ \hline 60.2 \end{matrix}$	271.2 $\begin{matrix} 5.6 \\ 6.3 \\ \hline 60.7 \end{matrix}$	20	270.25 $\begin{matrix} 6.5 \\ 4.9 \\ \hline 62.1 \end{matrix}$	273.0 $\begin{matrix} 5.8 \\ 4.5 \\ \hline 60.7 \end{matrix}$
12 FC	270.0 $\begin{matrix} 6.8 \\ 6.7 \\ \hline 60.1 \end{matrix}$	270.6 $\begin{matrix} 6.2 \\ 6.8 \\ \hline 60.6 \end{matrix}$	21	270.32 $\begin{matrix} 6.5 \\ 4.2 \\ \hline 62.3 \end{matrix}$	272.5 $\begin{matrix} 4.3 \\ 4.1 \\ \hline 60.2 \end{matrix}$
13	270.0 $\begin{matrix} 6.8 \\ 6.9 \\ \hline 60.1 \end{matrix}$	270.0 $\begin{matrix} 6.8 \\ 7.0 \\ \hline 60.2 \end{matrix}$	22	270.38 $\begin{matrix} 6.4 \\ 4.1 \\ \hline 62.3 \end{matrix}$	272.0 $\begin{matrix} 4.8 \\ 4.7 \\ \hline 60.1 \end{matrix}$
14	270.0 $\begin{matrix} 6.8 \\ 7.1 \\ \hline 60.3 \end{matrix}$	270.0 $\begin{matrix} 6.8 \\ 6.9 \\ \hline 60.1 \end{matrix}$	23	270.44 $\begin{matrix} 6.4 \\ 5.3 \\ \hline 61.1 \end{matrix}$	271.5 $\begin{matrix} 5.3 \\ 5.1 \\ \hline 60.2 \end{matrix}$
15	270.0 $\begin{matrix} 6.8 \\ 7.3 \\ \hline 60.5 \end{matrix}$	270.0 $\begin{matrix} 6.8 \\ 7.4 \\ \hline 60.6 \end{matrix}$	24 FC	270.5 $\begin{matrix} 6.3 \\ 5.7 \\ \hline 60.6 \end{matrix}$	271.0 $\begin{matrix} 5.8 \\ 5.6 \\ \hline 60.3 \end{matrix}$
16 B.C.	270.0 $\begin{matrix} 6.8 \\ 7.4 \\ \hline 60.6 \end{matrix}$	270.6 $\begin{matrix} 6.2 \\ 7.8 \\ \hline 61.4 \end{matrix}$			
17	270.07 $\begin{matrix} 6.7 \\ 7.5 \\ \hline 60.8 \end{matrix}$	271.2 $\begin{matrix} 5.6 \\ 7.9 \\ \hline 62.0 \end{matrix}$			
18	270.13 $\begin{matrix} 6.7 \\ 7.6 \\ \hline 60.8 \end{matrix}$	271.8 $\begin{matrix} 5.0 \\ 7.5 \\ \hline 62.5 \end{matrix}$			
19	270.19 $\begin{matrix} 6.6 \\ 6.9 \\ \hline 60.3 \end{matrix}$	272.4 $\begin{matrix} 4.4 \\ 5.6 \\ \hline 61.2 \end{matrix}$			

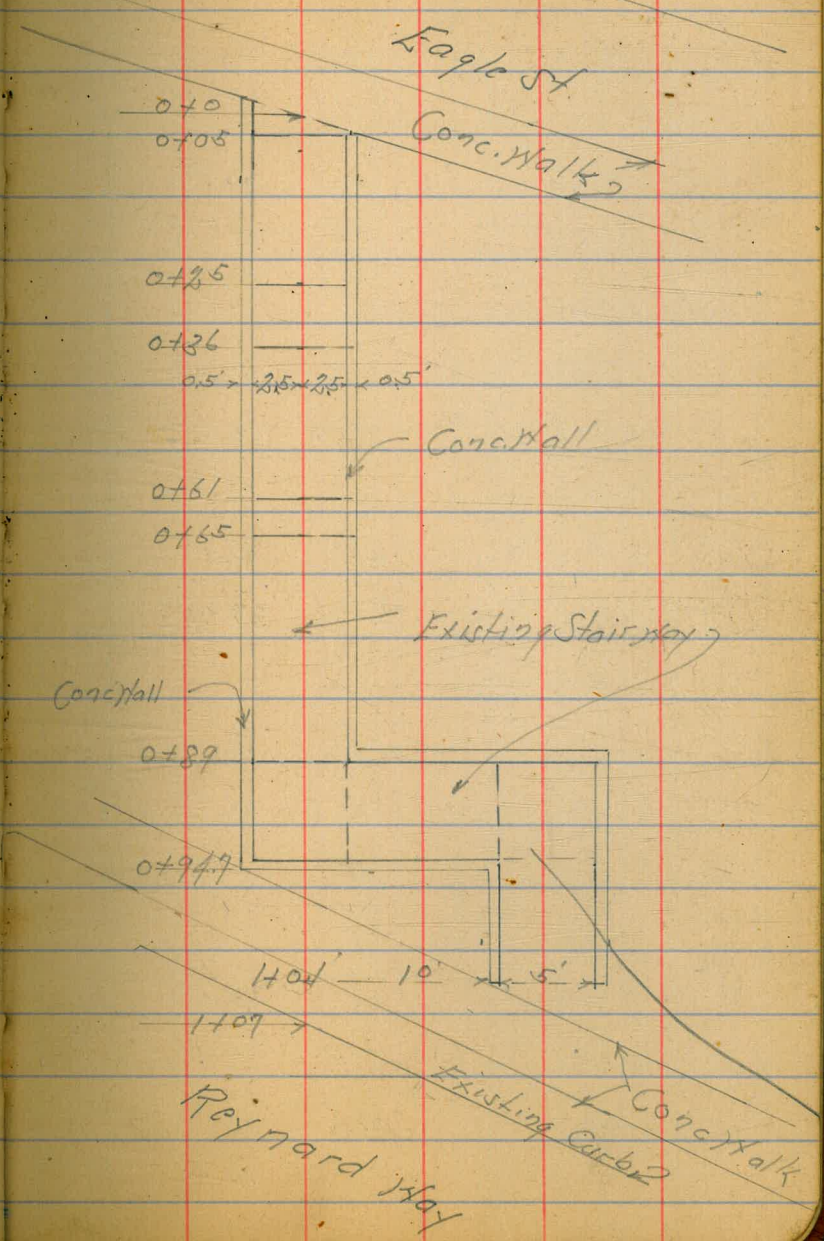
Cross Section 4 Stairway
Palm St. Reynard Way to Eagle St

INDEXED
E.F.B.

Apr 13-78
Sisson
Northey
H Moore

62

Assumed			
B.M.	0.22	100.22	100.00 + 1/4 Edge Walk on Eagle
			Stairway
			Walk on Eagle
1/2 on Walk	0.22	100.0	
5' S	0+05	0.5	99.72
1/2	0.42		99.80
5' H Top Cobble Wall	0.0	100.22	
5' H Ground	1.6		98.62
	0+20 = Brick 12' Hall		96.82
9' H	3.4		92.65
2.5' H = Top Hall	7.57		92.27
1/2 on Steps	7.95		92.80
2.5' S = Top Hall	7.42		96.72
9' S	3.5		94.92
	0+36 = Brick 7' Hall		91.73
12' S	5.3		88.70
2.5' S = Top Hall	8.49		91.73
1/2 on Steps	11.52		94.12
2.5' H = Top Hall	8.49		
9' H	6.1		



TP 0.20 $\frac{100.22}{\pi}$ 88.90 11.52 88.70

0+61

12'N 0.0 88.90

7'N 1.1 87.80

4'N 8.8 80.1

2.5'N = Top Wall 9.64 79.26

1/2 on Landing 12.68 76.22

2.5'S = Top Wall 9.66 79.24

9'S 5.2 83.70

11'S 70.5 89.40

0+76

18'S 2.4 86.50

12'S 3.2 85.70

7'S 13.8 75.10

TP + $\frac{77.55}{\pi}$ 0.28 11.63 77.27

2.5'S = Top Wall 3.93 73.62

1/2 on Step 7.09 70.96

2.5'N = Top Wall 4.04 73.51

5'N 3.9 73.65

77.55

10'N +2.0 79.55

0+89

12'N 12.5 65.05

3'N 14.6 62.95

2.5'N = Top Wall 11.07 66.48

1/2 on Landing 14.00 63.55

2.5'S = Top Wall 10.51 67.04

16'S = 11 " Sky End 10.51 67.04

16'S on S Cor Landing 18.46 59.09

24'S +5.8 83.35

24'S +7.4 84.95

0+94.7

24'S 7.1 70.45

23'S 13.1 64.45

TP 2.93 $\frac{68.93}{\pi}$ 11.55 66.00

16'S = Top Wall 6.95 61.98

13'S = 1/2 Landing 10.05 58.88

1/2 on Landing 5.43 63.50

1/2 Top Wall 2.46 66.47

68.93

2.5' H - Top Wall	2.47	66.46
3.5' H - Ground	1.45	54.43
15' H	1.43	50.63
TP	0.91	59.29
	10.55	58.38
1+01		
$\frac{1}{2}$ 0.2 (0.2) Walk	5.15	54.14
10.5 on Land	5.21	54.08
10.5 Top Wall	1.68	57.61
16.5 " "	1.63	57.66
16.5 on Landing	5.21	54.08
22.5	1.4	57.89
32.5	15.6	64.89

1+07

39.5	2.2	57.09
20.5 - Fly Case Walk	5.49	53.80
$\frac{1}{2}$ = Top cb	5.30	53.99

Cross Section Landis St
Alabama to Mississippi

30' Roadway
7.5' Gr

~~INDEXED~~
EFB

Nov. 9, 10
Sisson
Northridge 65
W. Moore

BM 11.45 256.97 245.52 Landis St
Alabama

0+0 = E.L. Alabama

Scb Top 11.49 245.48

Gutter - E End cb lot 12.49 244.48

1/4 07 Pav 12.04 244.93

1/2 " " 11.78 245.19

3/4 " " 11.84 245.13

Gutter - E End cb lot 12.26 244.71

Hcb Top 11.25 245.72

0+25

Hcb Top 9.14 247.83

Gutter 9.7 247.3

1/4 9.5 247.5

1/2 9.3 247.7

3/4 9.5 247.5

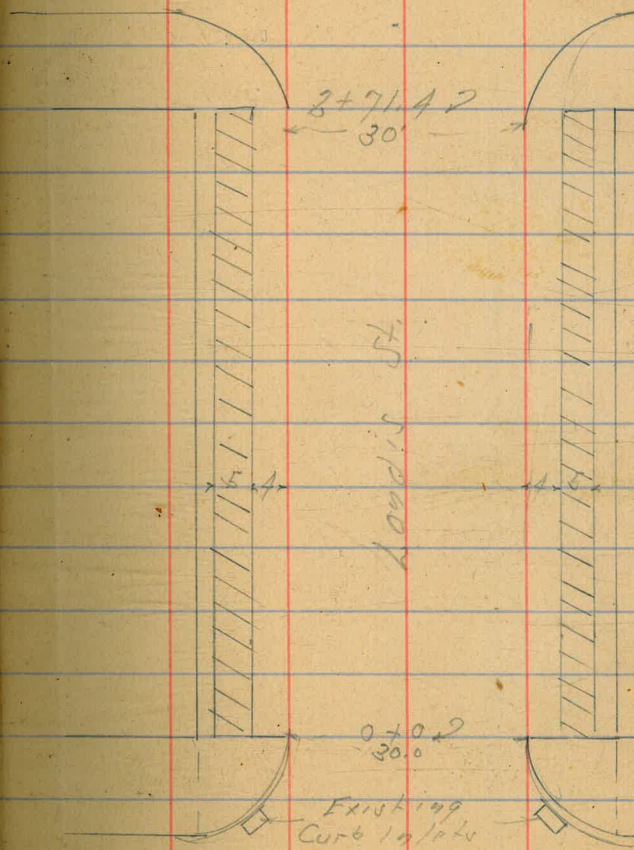
+1 9.6 247.4

Gut 10.2 246.7

Scb Top 9.25 247.62

Mississippi

St



Alabama

St

Londis St.

256.97

0+50

SCB Top	7.05	249.92
Gut	8.0	249.0
+3	8.0	249.0
+4	7.3	249.7
1/4	7.3	249.7
1/2	7.0	250.0
1/4	7.4	249.6
Gut	7.5	249.5
NCB Top	6.90	250.07

0+75

NCB in Drive	5.30	251.67
Gut	5.5	251.5
1/4	5.2	251.8
1/2	5.0	252.0
1/4	5.1	251.9
Gut	5.2	251.8
SCB in Drive	5.49	251.48

66

256.97

1+0

SCB Top	2.50	254.47
Gut	3.2	253.8
1/4	2.7	254.3
1/2	2.5	254.5
1/4	2.8	254.2
Gut	3.1	253.9
NCB Top	2.41	254.56

1+20

NCB Top	0.63	256.34
Gut	1.3	255.7
1/4	0.8	256.2
1/2	0.6	256.4
1/4	0.8	256.2
+3	0.9	256.1
+4	1.8	255.2
Gut	1.3	255.7
SCB Top	0.71	256.26
TP	10.93	267.74
	0.16	256.81

Lardis St.

267.71

1+50

Scb Top	8.63	259.11
Gutter	10.6	257.1
+2	8.9	258.8
$\frac{1}{4}$	8.7	259.0
$\frac{1}{2}$	8.7	259.0
$\frac{1}{4}$	8.9	258.8
Gutter	9.4	258.3
Hcb Top	8.74	259.00

1+75

Hcb Top	6.48	261.26
Gutter	6.9	260.8
$\frac{1}{4}$	6.7	261.0
$\frac{1}{2}$	6.6	261.1
$\frac{1}{4}$	6.6	261.1
+3	6.5	261.2
Gut	7.0	260.7
Scb Top	6.35	261.39

67

267.74

2+0

Scb Top	4.04	263.70
Gutter	4.5	263.2
+3	5.0	262.7
$\frac{1}{4}$	4.3	263.4
$\frac{1}{2}$	4.2	263.5
$\frac{1}{4}$	4.5	263.2
Gutter	4.9	262.8
Hcb Top	4.24	263.50

2+25

Hcb Top	2.08	265.66
Gutter	2.8	264.9
$\frac{1}{4}$	2.5	265.2
$\frac{1}{2}$	2.1	265.6
$\frac{1}{4}$	2.2	265.5
+4	2.7	265.0
Gutter	2.3	265.4
Scb Top	1.73	266.01
TP	7.37	274.60
	0.51	267.23

274.60

2450

SCb Top	6.32	268.28
Gutter	6.8	267.8
+3	7.1	267.5
1/4	6.6	268.0
1/2	6.6	268.0
1/4	7.1	267.5
Gutter	7.4	267.2
Hcb Top	6.74	267.86

2+71.4 = WL MISSISSIPPI

Hcb Top	4.84	269.76
Gutter on Pavement	5.32	269.28
1/4 " "	4.94	269.66
1/2 " "	4.70	269.90
1/4 " "	4.77	269.83
Gutter " "	4.90	269.70
SCb Top	4.29	270.31

274.60

2+81.9 = Hcb MISSISSIPPI

SL on Pavement	4.60	270.00
cb " "	4.70	269.90
1/4 " "	4.40	270.20
1/2 " "	4.39	270.21
1/4 " "	4.57	269.03
cb " "	4.86	269.74
NL	5.12	269.48
B.W	3.07	271.53

SEBP
Londis St
MISS
271.51

Winona St Curb Levels
West Side Trojan to El Cajon Blvd

INDEXED
EFC

Nov. 29, 40
5:55 PM
North Street
St. Louis

365.74

BM	11.09	362.61	351.52	11.89 BP El Cajon to Trojan	1+21.45 on cb	5.20	360.44
TP	11.21	373.68	0.14	362.47	1+01.45 = 1/2 lot	5.38	360.36
5+44	= 5 L El Cajon	1.84	371.84		0+81.45	4.95	360.79
5+0		4.23	369.45		0+75 = 1/4 Fronting Walk on Walk	4.45	361.29
4+70		6.01	367.67		0+61.45 P.V.C.	4.39	361.35
4+31.45	P.V.C.	8.23	365.45		0+8	3.02	362.72
4+11.45		9.21	364.37		0+0 = 1/2 L Trojan	2.64	363.10
3+91.45		10.42	363.26				
3+71.45		11.52	362.16				
3+51.45		11.77	361.91				
3+31.45		11.95	361.73				
TP	4.02	365.74	11.96	361.72			
3+11.45	P.V.C.	4.14	361.60				
3+0		4.19	361.55				
2+50		4.42	361.32				
2+0		4.78	360.96				
1+70		4.91	360.83				
1+41.45	P.V.C.	5.15	360.59				
1+25	= 1/4 Fronting Walk on	4.77	360.97				

Columbia St. Sewer Levels
South of Upas St.

1/2 Columbia Open Trench

BM 535 118.49 118.14

SEBP
1/2 x
Columbia

TP 10.60 127.61 148 117.01

30' N of S.L. Upas

Ground 12.2 115.4

Bottom Trench 17.6 110.0

S.L. Upas = 0+0

Ground 6.4 121.2

Bottom Trench 12.5 115.1

TP 11.99 129.33 0.27 127.34

0+32

Ground 10.4 128.9

Bottom Trench 17.0 122.3

0+64 = Break 12' Grade

Ground 3.9 138.94

Bottom Trench 10.6 128.7

1+0

Ground 0.0 139.3

Bottom Trench 6.2 133.1

TP 11.21 149.15 1.39 137.91

INDEXED
EFS

Dec. 3-40
Sisson 70
Northport
14 Report

149.15

1+35 = End Main Sewer

Ground 6.5 142.7

Bottom Trench 12.4 136.8

Lateral
Opposite 1+51 - E.L. Columbia 1.0 S of 1/2

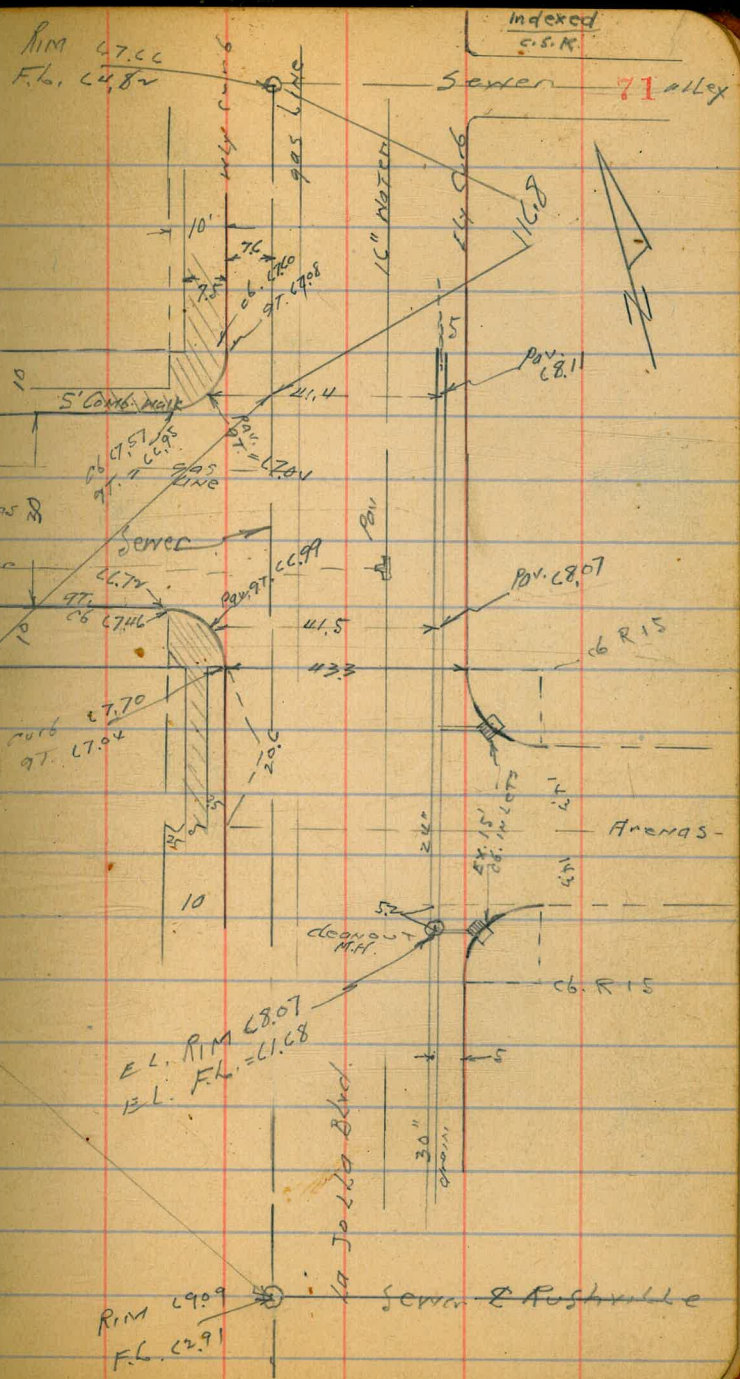
Ground E.L. Columbia 0.0 149.2

Bottom Trench 3.7 145.5

compare Levels for Proposed Cb. inlets
 SWLY 7' CT. at La Jolla Blvd + Arenas St.
 3-8-46.

SWLY 7' CT.	5.53	73.93	5.840	La Jolla Blvd
T.P.	4.25	73.69	4.59	MARIANO ST
T.P.	4.77	72.74	5.72	
	<u>7.32</u>	<u>5.08</u>	<u>9.83</u>	
	64.74	67.66	62.91	69.09
	<u>5.04</u>	<u>5.70</u>	<u>5.75</u>	<u>5.28</u>
	67.70	67.04	66.99	67.26
	<u>5.17</u>	<u>5.79</u>	<u>5.70</u>	<u>5.14</u>
	67.57	66.95	67.04	67.60
	<u>4.63</u>	<u>4.67</u>	<u>4.67</u>	<u>4.66</u>
	68.11	68.07	68.07	68.08

check cb. elev. to profile please
 Thank you



RIM 69.09
 F.L. 62.91
 Sewer & Rushville

New curb in alley bet. Col. & High

76

		+	H.I.	-	Elev	
			BM	7.04	59.32	52.28 High.
	5.95		curb W. on Univ		4.12	55.20
	5.62		curb NW. on Alley		3.82	55.50 Set ✓
N. Inlet	6.58		pavement NW		4.24	55.08
	5.42		curb E. on Univ		4.53	54.79 Set
S "	6.8		curb NE on Alley		4.22	55.10 "
	6.9		pavement NE		4.33	54.99
Top N	5.47					

	+	H.I.	-	
B.M	3.56	345.09		341.53
			3.83	341.26
			4.44	340.65
			Should be	340.63

B.M.	7.297	56.577		52.28 Highland
T.P.	5.079	55.278	6.388	50.189
			5.666	49.612
			Should be	49.58 Cabrillo

B.M.	6.320	58.600		52.280 Highland
T.P.	5.668	60.976	3.352	55.298
B.M.			4.214	56.702 Colonial
			Should be	56.680 "

Brass plug Sierra & Univ
 " " in top of Highway Monument, N.W. Cor. [Euclid & Univ.
 " " Euclid & Univ. - Old B.M.

corner Stairmount 17.03

alley Between)) to Colonial E. side 17.02

)) to Highland 17.02

Highland to Cobille 17.03

)) to Munton 17.04

Culvert on Castle

Curb - N 15.02 15.02 5.2 10.00 C 2.0

7.87 7.15-

Curb - S 5.35 9.67 C

N curb 15.02 8.00 C 2.0

S curb line 7.45 C 2.22

Center St 7.30 7.72

Stake " 4.80

" 33' south 7.90 7.12



9711
33411

