

STREET CENTERS

MISCELLANEOUS NOTES OF  
LAND & TOWN COS ADD ETC

Cadwallader's book

8

25

2

F.B. 75

Return to City Engineers Office

City Hall, San Diego, Cal.

75

able showing the difference of latitude and departure in running 80 chains at any course from 1 to 60 minutes.

Minutes.	Lks.	Minutes.	Lks.	Minutes.	Lks.
1.....	2½	21.....	49	41.....	95½
2.....	4	22.....	51½	42.....	98

Book no. 75

name

date

MENTS, ETC.,  
ERS,

d, the number of  
measurement.

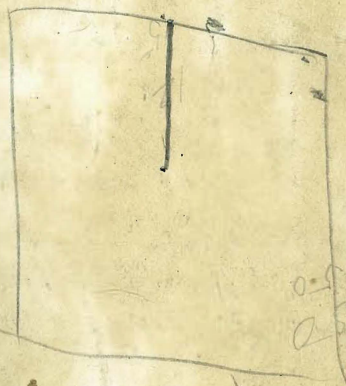
le. Cor. in links

10-54  
11-26  
12-24  
13-37  
14-34  
15-47  
22-07

Return to City Engineers Office  
City Hall, San Diego, Cal.

74

R. B. Wallada



Whitney's add - 2-3.

Pueblo Lot 1152 - 6-7-8

Hoett's add. 10-9-11

Bay front of lot & land M+5-4-5

I + 5 lots (important) - 12

1

Chlorine CW.



- Angle I G H =  $89^{\circ}50'$

- G H = 217.30

- Angle J I K =  $90^{\circ}04'$

- I J = 215.35

5.03  
660.22  
670.90  
664.90  
609.60  
29.6

26 48.95 - Puck's time  
26 43.45 - a short and

Checked this  
made it -

June 5<sup>th</sup> 1888

Notes on Bay front from  
2<sup>nd</sup> west

1600  
1775  
-1600  
175-

cont. Ry and  
and line of 28<sup>th</sup> St

Right 15° 30'  
1600  
875 Right 14° 30'

100 Right 34° 30'  
600 14° Left

1100 7° Left

80° Left  
24° 51'

end Pt 21st  
 to end 22nd Pt  
 Right - 139°53'

to end Pt. 21st  
 left 44°01'

angle of shore  
 127°0' Right

500

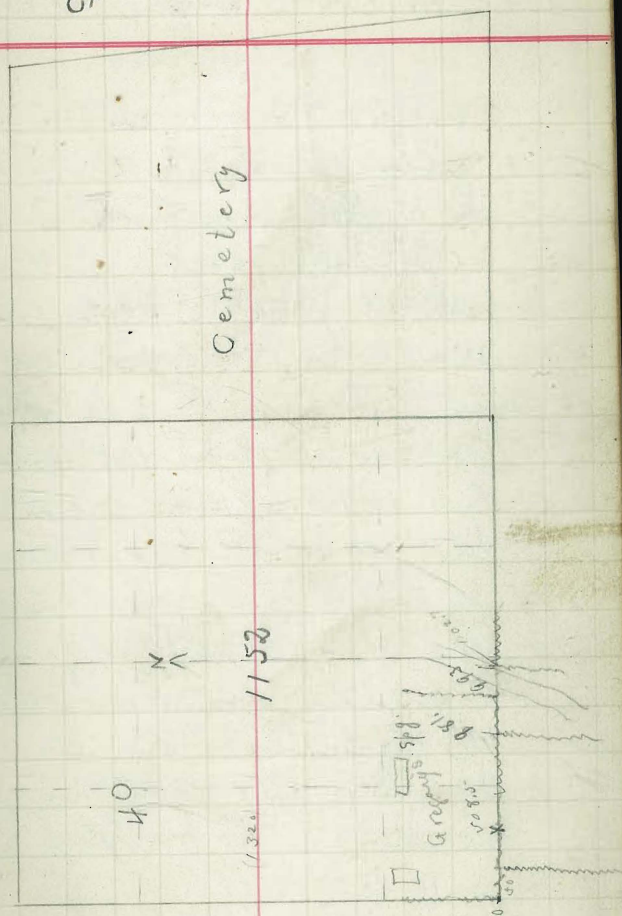
2000 Right - 95°00'

Wednesday June 6<sup>th</sup> 1886

Work on Public Lot 1152

- There is a fence cor in what I suppose to be the S.W. cor
- 50 E of this cor a fence joins in from the south
- at 981 ft is another fence coming in to the S line from the south
- At 993 or 12' further east is the end of the fence on the S line from there it runs N
- 1102.7 is a wire fence on the S Public line = the N boundary of Central Homestead. This is on the E edge of creek
- at 508.5 is an old stake marked Fulton(?) Felton
- At 1284.20 and 32.75 S is the stake N stake of a row extending South. This stake is marked S - Lot 34; W - Bear 1, N - O, E - 5<sup>th</sup>

Ex-Mission





- 60 ft further east is another row of stables with a stake 32 ft south of line. This stables marked W-80. S-Lot 1; E-Blk 2 (1344.2)

- at 1415.6 is a skaff stable ~~ma~~ faced NE and marked Lot 6, blk 84

- at 1469.3 and 30.5 S is a stable marked on the E-ally, on the W Lot 1 - on the N B.M.

- 20 ft further east is another stake with ally on the W side and Lot 34 on the East

- at 1515.60 skaff stable faced NW and marked Lot 6 Blk 84

- At 1615.6 old unpainted plug + tack, 30.9' South is the 1<sup>st</sup> of a row of stables

- At 1675.5 old plug and a 2 x 3 stable marked on the W 35<sup>th</sup> st on the S - Blk 5

- 30.8 S is the N stable of a row marked on the E-Blk 3, W-85 South Lot 1

- (30<sup>th</sup> South are two stables marked ally)

- at sta. 1916.45 and 29.8 South is a stake, N one of a row, marked 6 on the S-34

- at sta 1976.45 and 29.9 S is a row of stables

- (There are two ally stables between them)

- at sta 2216.35 plug and 2 x 3 stable marked on the S R<sup>st</sup>, E-36<sup>th</sup> st

- at sta 2245.95 east end of wire fence and the old hole where I found a 4 x 4 stable before. In this hole someone has set a 3 x 3 white stable

- 640.30 to SW cor of cemetery  
fence

- also chained on the line of  
plugs 30' S of the Pueblo line  
- from wire fence 30(?)

STR 125.13

STR 145.13

- STR -269.93 (High + Fiske sts)

- (60ft STR knockdown)

- 455.63 - STR (also 20ft E)

- STR 600.83

605.8 to fence

- white stake 690.3 (blk 3  
37<sup>th</sup> st)

- from SW cor of cem fence east  
to SE cor 2013.26

650 from SW cor cem (blk 1)

- 1010 school house fence on  
W side 30' south

1309.5 E line of school  
fence, 30' S

- 1369.9 from SW Cem. cor

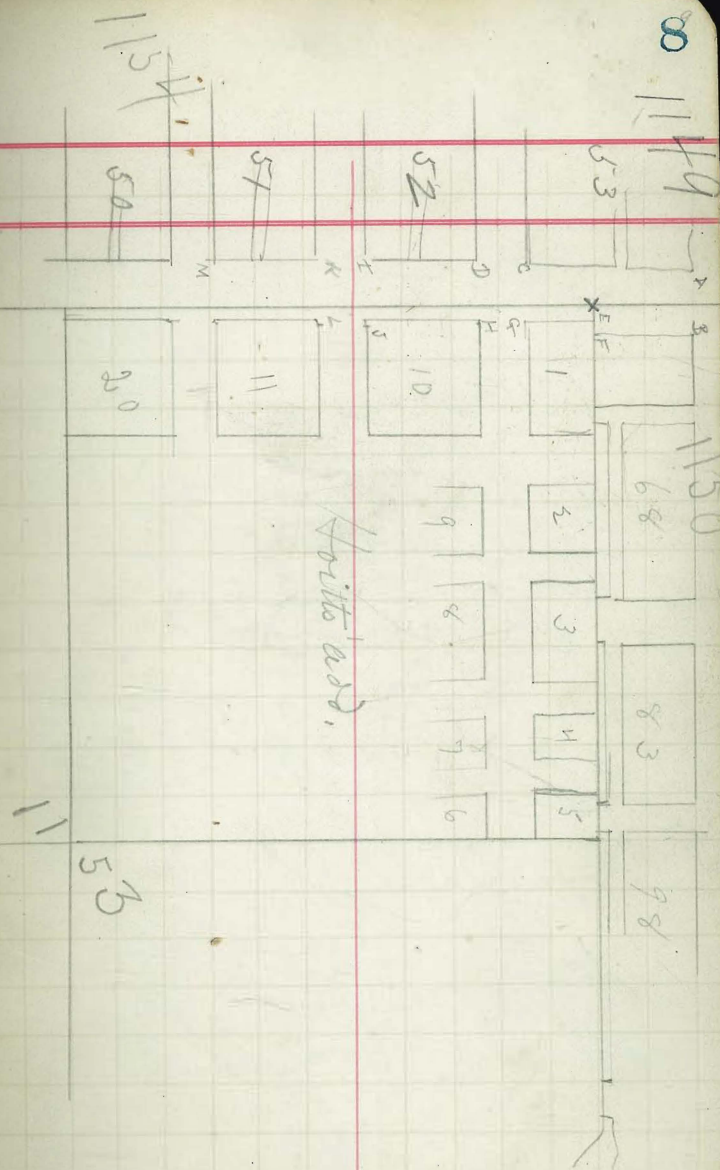
to STR marked blk 1-39<sup>st</sup>

- 1640.32 old plug from cem  
fence cor

- 1860 ft from SW cem. cor  
alley stake

Thursday June 7<sup>th</sup> 1898  
 Measurements in Halls Add &  
 Peck's lot lines.

- Found 4x4 post at a  
 quarter of a mile further East
- Inner angle of the Peck's  
 Lot  $115-3 = 88^{\circ}30'$
- from Peck's cor to 7 = 24.1

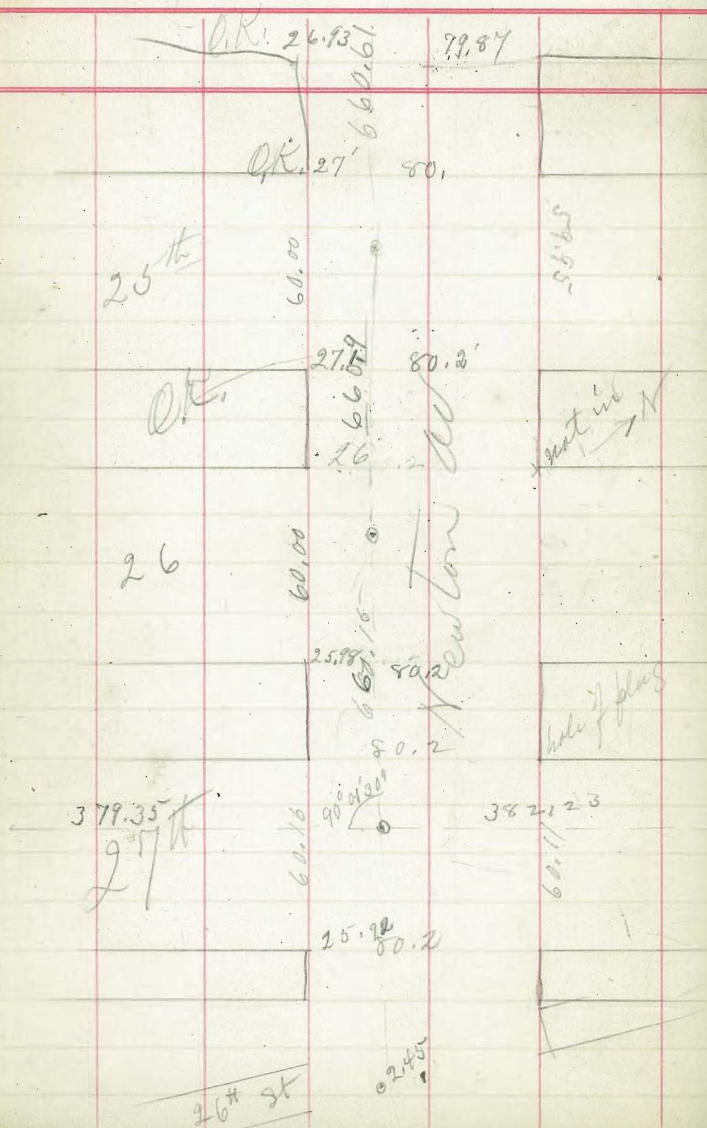






24

0



11

changed the center of ~~N. 1.45~~  
 of Newton Av + 27th St. This  
 makes it 380 from each side

At 27th St measured 27.11' from  
 the 3 stake and read the angle  
 from 25th it is 04' left  
 placed center by intersection

Distance from the center of  
 Grand + 26th south of the center  
 of Newton Av + 26 is 158.40

Angle at center of Newton + 26 from  
 center of 26th + Newton to 26th + Grand  
 is 50° 10'

From center of 26th + Boston Av  
 N to center of Newton Av + 26th  
 is 221.46

Saturday June 9<sup>th</sup> 1884

Calif. South R. Ry.

12

am

Price  
Palm

474.05

HK can check with the  
center OK.

382.11

Oliveo

HK can check with  
center

380.95

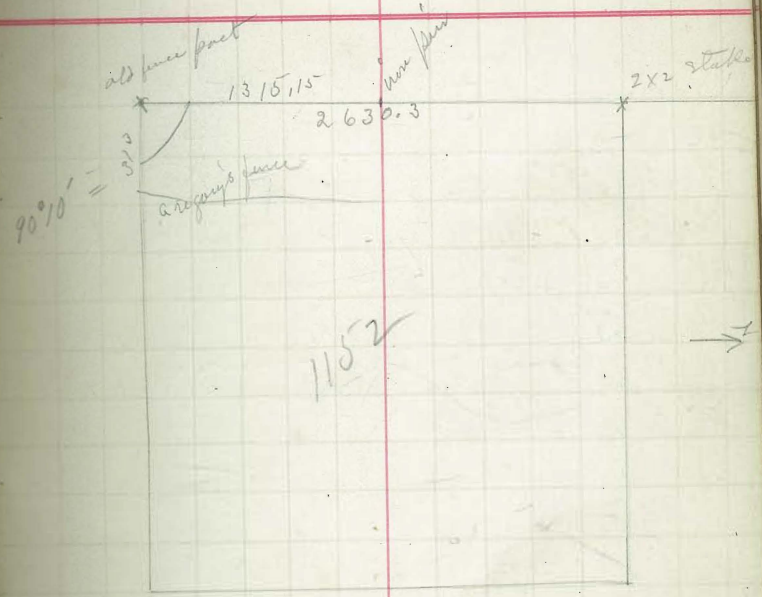
ST.

Milton

Milton

P.M.

$$\begin{array}{r}
 22130 \\
 2508.95 \\
 \hline
 22838.95
 \end{array}$$

$$\begin{array}{r}
 2640 \\
 2508.95 \\
 \hline
 5148.95
 \end{array}$$




Wm Day June 11<sup>th</sup> 1888  
Felton

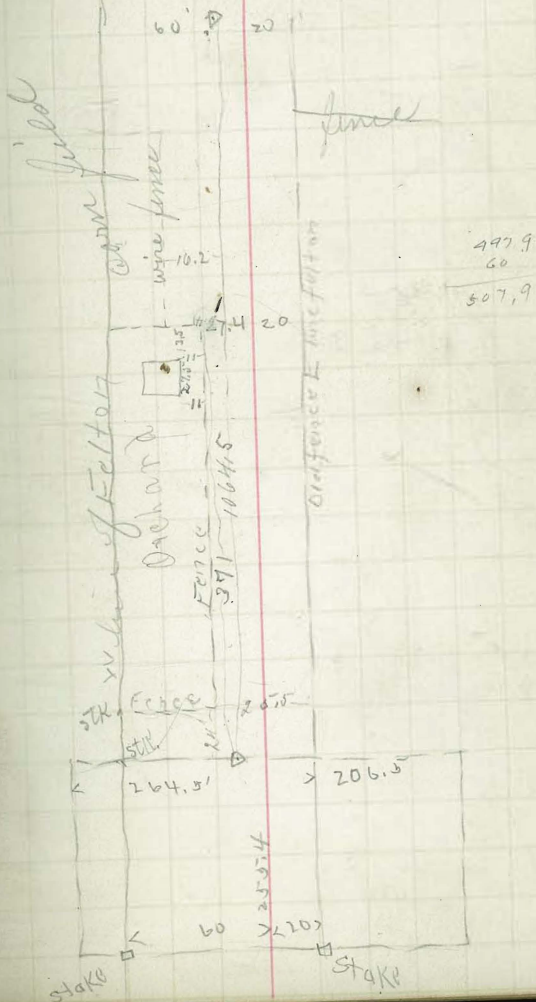
AM 9:30  
until

6-11-88

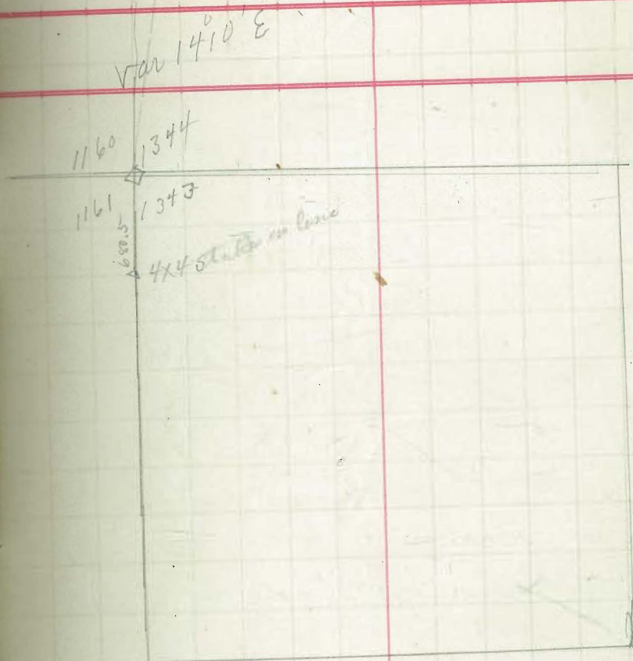
Starting at stake N.E. cor  
34 & R meas 507.35 to line  
of old fences on E line Felton  
Found old plg N.E. Felton & R  
meas 20' W from this plug & p  
Run N on line 20' W of E line of  
St. taking measurements to  
fences etc

E. H. Wheeler &  
R. Cadwallader

14



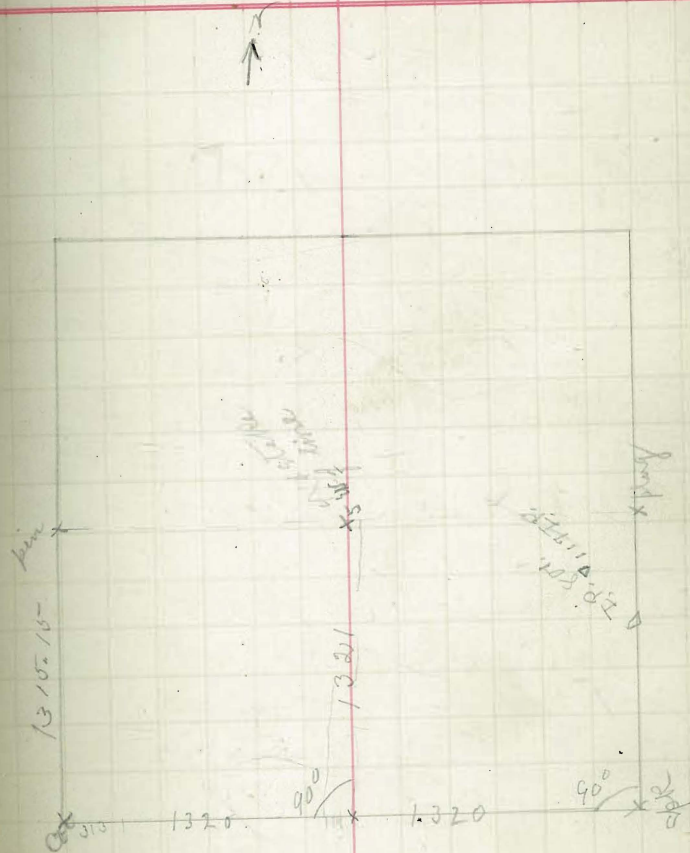
- Found large 4x4 stake in NW  
 cor of 1343 lettered as per diagram  
 This post was set by Wheeler  
 and Avery



Thursday June 14<sup>th</sup>, 1888  
Pueblo 1162

16

- Beginning at a point on  
the S line 14<sup>th</sup> E of Grayson  
Juncos + 1320 E part of the  
SW cor I turned a L<sup>r</sup>  
and ran North 1317.  
- found 4x4 stake at  
1321 ft and 5<sup>1</sup>/<sub>2</sub> W of  
line. I consider this  
the cor.  
- Placed the SE cor of  
Pueblo 1163 2642 and 8155  
East of the wire fence cor.  
- Turned a L<sup>r</sup> and chained  
North placing plugs at the  
center of the E & W streets  
at the point 1320 placed  
plug and turned 90° ran W  
placing points for cen. of  
streets.



Friday June 15<sup>th</sup> 1888

AM: Placed cross in stake  
as K Jan 25<sup>th</sup> to 33  
finished it up

P.M.: Placed st cen of the  
Pueblo line of W + S  
on the W + S sides

Saturday June 16<sup>th</sup> 1888

changed the plugs on the  
N + S lines because I  
had put them in at wrong  
distances.

Monday June 18<sup>th</sup> 1888

found NE Cor of  
Pueblo 115.2

E side of Pueblo lat =  
2630.1

- angle in the NE cor same  
angle  $90^{\circ}48'$

- Angle in SE cor  $89^{\circ}49'$

Tuesday June 19<sup>th</sup> 1888

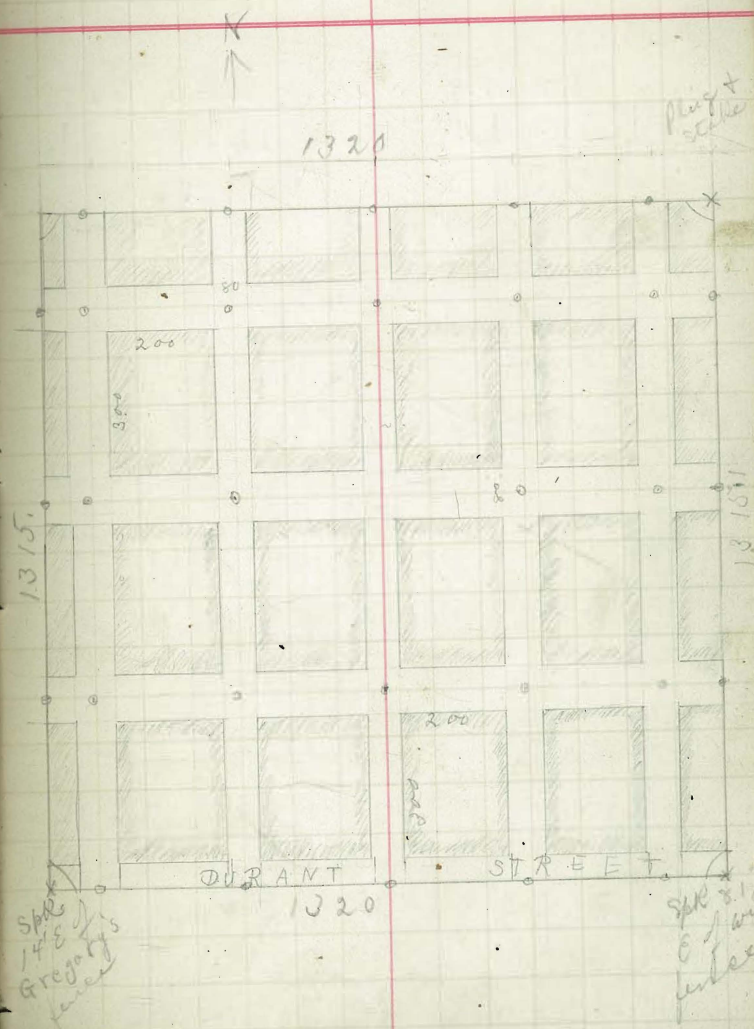
- N line is = 2638

- placed stake at halfway  
point - and ran between the  
two halfway points on the N  
and S lines placed interior  
stakes for the cen.

Wednesday June 2<sup>nd</sup> 1888

Wetmore + Sanborns Add 18  
- the SE 1/4 of Public lot 1152

- Placed center in  
lot + San. Add.
- and changed the E  
side onto the true  
Public line along the  
W side



Survey of Lots for  
Mr. Wrentham

20  
19

Friday June 22<sup>nd</sup>

Replaced st corner  
Logan Av.

Av.

Logan

Ar.

Milton

26<sup>th</sup> St

26<sup>th</sup> St

Grades on 28<sup>th</sup> St

E

W

Rod	Elv	Grade	R	E	W	Sta
11.5	2.3	2.1	11.3	2.5	2.0	+90
4.7	9.1	3.6	10.9	2.9	2.6	2
6.2	17.6	6.05	5.7	18.1	5.55	+50
0.4	23.4	8.5	3.4	20.4	8.5	3
		Colton				Colton
1.7	27.7	10.5				





Monday June 25th

Placed X-Size stakes  
on M + L Streets  
from 25th to 32<sup>nd</sup>

~~Center 109~~

Credit Capital  
with 0.5% for  
Car fare from  
India to 16<sup>th</sup> St  
with 100 Stakes

Tuesday June 26<sup>th</sup>, 1888 22

26<sup>th</sup>

13' 6"

13' 0"

80'

25<sup>th</sup>

100'

13' 6"

13' 0"

24<sup>th</sup>

80'

E  
I.P.D. 20' 13"

X A

1P

107'

7'

= 2'30" Right

23<sup>rd</sup> St.

80'

I.P.D. 20' 13"

C

Work on A st (Page 23)

- Produced the min. line  
of A st W of 24 from the  
7' N + E center and placed  
a point (A)

- Produced the line of  
A st from 26 W from  
the 13' S + W center and  
placed points

- Turned Right angles  
and measured 20' S

- The angle in the line is  
2' 30" Right from center  
24<sup>th</sup> to center of 26<sup>th</sup> at  
the center of 24<sup>th</sup> st.

See diagram

Placed cross-section  
stakes on A st from  
25<sup>th</sup> East to 31<sup>st</sup> +  
400 ft

- 25 to 26	- 560
26 - 27	600
27 - 28	600
28 - 29	560
29 - 30	600
30 - 31	600

Placed stakes on  
B st from 26<sup>th</sup> to 28<sup>th</sup>  
both sides and from  
28<sup>th</sup> to ~~on the south~~  
side of the st.

Monday July 23<sup>rd</sup>

From	K	to	f	m	26	380.1
"	f	"	G	"	26	380.56
"	H	"	H	"	26	390.55
"	H	"	G	"	26	391.70
"	G	"	F	"	"	379.38
"	G	"	line	"	"	347.15

From	H	to	G	m	25	391.1
"	H	"	G	"	24	390.42
"	H	"	G	"	24	390.64
"	H	"	G	"	"	"

Tuesday 24<sup>th</sup> July

"	F	to	G	m	25	379.84
"	G	"	H	"	"	391.1
"	26	"	25	"	F	660.
"	25	"	24	"	F	660.89
"	25	"	24	"	G	660.89
"	26	"	25	"	H	660.04
"	25	"	24	"	H	660.92
"	26	"	25	"	G	660.1
"	25	"	24	"	G	660.93
"	H	"	G	"	26	391.70

Wednesday July 25<sup>th</sup> 1888

From	26	to 27 <sup>on</sup>	J	=	659.78
"	H	" 25 + line "	27	=	348.17
"	H	" 26 "	27	=	392.29
-	27	" 26 "	G	=	659.38
"	27	" 26 "	H	=	
"	27	" 26 "	J	=	

From N to G

25

	27	=	392.29	diff	.59
	26	=	391.70		.60
	25	=	391.10		.48
	24	=	390.42		*
	23	=			

From J to H

27	=	390.25	
26	=	390.40	
25	=	390.55	
24	=	390.70	390.70
23	=	390.90	

Thursday July 26<sup>th</sup> 1888

F to G

26	=	379.33
25	=	379.88

\*

From 27 to 26

F	=	659.38
H	=	659.84
J	=	659.75
G	=	659.90
N	=	660.12

From 26 to 25-

$$7 = 660.$$

$$8 = 660.03$$

$$H = 660.04$$

$$J = 660.10$$

$$I = 660.76$$

$$K = 660.23$$

$$L = 660.30$$

$$M = 660.37$$

J to I

$$27 = 380.51$$

$$26 = 380.56$$

$$25 = 380.54$$

J to K

$$27 = \cancel{380.83} = \cancel{380.08} \quad 380.92$$

$$26 = 380.98$$

$$25 = 380.90$$

From 25 to 24

$$7 = 660.89$$

$$8 = 660.89$$

$$H = 660.92$$

$$J = 660.93$$

$$I = 660.94$$

$$K = 660.95$$

$$L =$$

$$M = \cancel{660.97} - 660.99$$

24 to 23

$$H = 660.58$$

$$J = 660.73$$

$$I = 660.83$$

$$K = 660.96$$

23 to 22

K to L

4.2

5.8.2

2.9

20.81

13.4

29.7

14.8

4.5

2.9

19.4

8.7

10.4

2.2

9

3.9

1.5

3.7

1.7

1.7

1.7

26

15.6

7.8

24 = ~~379.64~~ = 381.

25 = ~~379.64~~ = 381.2

26 = 381.58

27 =

3 - C 4.7

Grand

0 - C 1.9

+ C 2.4

1 - C 1.9

+ C 1.6

2 - C 1.1

+ C 1.9

3 - C 1.9

Natural

0 - C 1.3

+ C 1.3

1 - C 1.5

+ C 1.5

2 - C 1.5

+ C 1.2

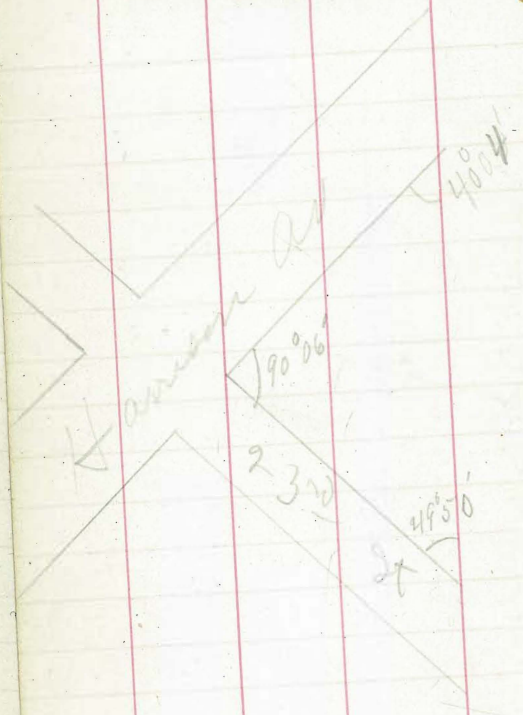
3 - C 1.0

Others

Wednesday June 27

48.05  
49.52  
59.57

27



49.50  
90.06  
40.04  
49.57

1776

77

78

79

80

81

82

83

84

85

86

87

88

89

90

91

92

93

94

95



96

97

98

99

1000

01

02

03

04

05

06

07

08

09

1000

11

12

13

14

15

16

17

18

1819.

1820

1821.

22

23

24

25

26

27

28

29

1830

31

32

33

34

35

36

37

38

39

1840

41

184.2

43

44

45

46

47

48

49

1550 2,469,093 Galois polin

51

52

53

54

55

56

57

58

59

1460

62

62

63

64

65

31

67

68

69

1870 3,011,996 bales of cotton, 2.9%, 1,445,626 bush  
2¢ per pound on steel rails as excepted

Wheat raised, corn = 1,609,944, 549  
as taken by iron works,

71

72

73

74

75

76

77

78

79

Steel rails \$2.14 per ton (see p. 18)

1880 459,499,505 bush of wheat raised, corn = 6,754,

869,535 bush, census shows that 393 is the average per family  
in the domestic steel industry, 2.5% to laborers  
of value 66.8% to cap.

81 in year ending Sept 1 - 6,589,329 bales of cotton

82 Knitt goods bill dependent on R + H bill

83

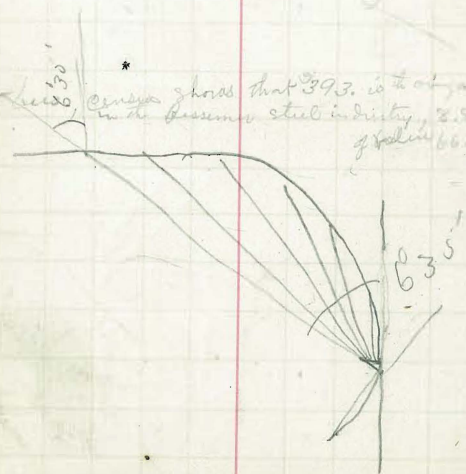
84

85

86

87

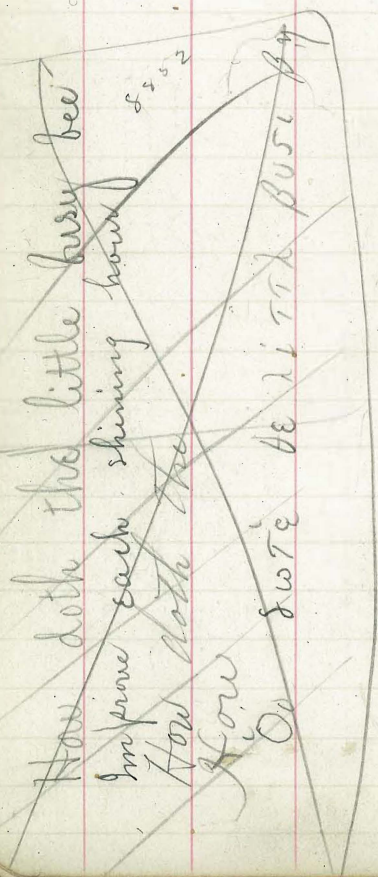
88



The image shows an open notebook with two blank pages. The pages are cream-colored and feature light blue horizontal ruling. The right page is numbered '33' in the top right corner. The notebook has rounded corners and a dark cover visible around the edges. The pages are otherwise empty of any text or markings.

August 2<sup>nd</sup> 1888

To obtain data for mapping in the  
Cal Southern Ry through town



angle from 22<sup>nd</sup> to 8 =  
90° 13'

7 + 68.7 = intersec. of  
22<sup>nd</sup> st. M + S

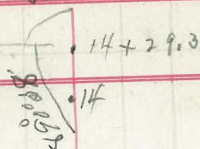
angle from 22<sup>nd</sup> to stuy.  
= 88° 52'

intersec. of 21<sup>st</sup> M + S + Ry -  
left 22'

34

22<sup>nd</sup>

49001



Tangent

12

11

10

9

8

7

6

5

4

3

2

1

0

1

0

1

0

1

0

1

0

1

0

1

0

1

0

14 + 29.3

14

22<sup>nd</sup> st

3048'

opposite 22<sup>nd</sup> depart  
1° 31' Right to Tan.

6° 35'

5° 47'

4° 47'

Left 2° 49'

1° 49'

58' 53'

1° 50' left

Tan. (1000)

42

5°41'

41

4°09'

40

2°41'

39

5°13'

38

3°44'

37

2°15'

36

58'

Left

35

0°12'

$34 + 72.7 = BC$

26th st

$34 + 12.3$

25th st

$27 + 50.9$

← Tangent

88  
A 291

65  
4'27'64  
3'27'63  
2'26'

62

Right

1'22'

61 + 16.8 = 13e

- 9000

28th St  
S + S 60s

48 + 20

~~66~~

46

45 + 54 = E.C.

45  
2'36'

1'51'

44

1'6"

43

7'11"



Conject

45  
37

77 25' Left

76 15° 28' R

75 14° 28'

74 13° 28'

73 12° 28'

72 11° 28'

71 10° 28'

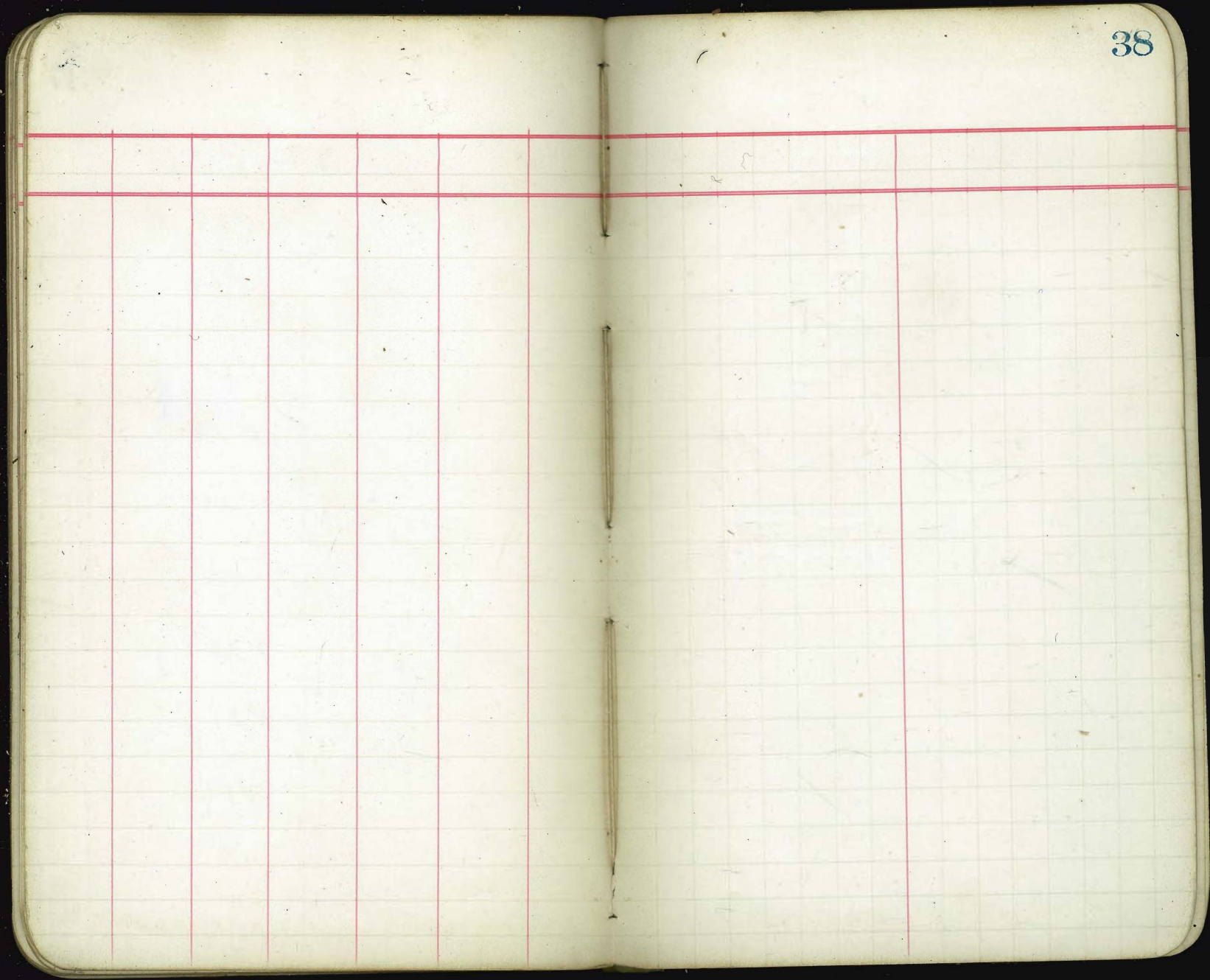
70 9° 28'

69 8° 27'

68 7° 27'

67 6° 28'

66 5° 27'



Farm

80 acres

40 in wheat - 20 bu acre

20 " corn 50 bu to acre

10 " of grass

3 head of horses

5 milk cows

10 hogs

30 of sheep

1 wife

2 children

} Sugar \$20. per year

$$\begin{array}{r} 265 \\ 210 \\ \hline 55 \end{array}$$

$$\begin{array}{r} 1055 \\ 24 \\ \hline 2119 \\ 15 \\ \hline 2134 \end{array}$$

$$\begin{array}{r} 10.50 \\ 8.40 \\ \hline 2.10 \\ .30 \\ \hline 2.40 \end{array}$$

$$\begin{array}{r} 52 \\ 30 \\ \hline 22 \end{array}$$

$$\begin{array}{r} 1.50 \\ .30 \\ \hline 1.20 \end{array}$$

$$\begin{array}{r} 21 \\ 5 \\ \hline 16 \end{array}$$

$$\begin{array}{r} 1.50 \\ 1.50 \\ \hline 3.00 \\ 2.65 \\ \hline 10.55 \\ 10 \\ \hline 2.65 \\ 1.50 \\ \hline 3.50 \\ 1.50 \\ \hline 5.00 \end{array}$$

$$\begin{array}{r} 35 \\ 35 \\ \hline 70 \\ 20 \\ \hline 90 \end{array}$$

$$\begin{array}{r}
 22 \\
 \hline
 22 \\
 22 \\
 22 \\
 22 \\
 \hline
 110
 \end{array}$$





Return to City Engineers Office  
City Hall, San Diego, Cal.

Return to City Engineers Office  
TRAVERSE TABLE FOR TRANSIT BOOK,  
From 1° to 90° for a distance of 1000.

Degrees.	DEGREES.		¼ DEGREE.		¼ DEGREE.		¼ DEGREE.		Degrees.
	Lat.	Dep.	Lat.	Dep.	Lat.	Dep.	Lat.	Dep.	
0			100.00	0.44	100.00	0.87	99.99	1.31	84
1	99.98	1.75	99.98	2.18	99.97	2.62	99.95	3.05	83
2	99.94	3.49	99.92	3.93	99.91	4.36	99.88	4.80	82
3	99.86	5.23	99.84	5.67	99.81	6.10	99.79	6.54	81
4	99.76	6.98	99.73	7.41	99.69	7.85	99.66	8.28	80
5	99.62	8.72	99.58	9.15	99.54	9.58	99.50	10.02	79
6	99.45	10.45	99.41	10.89	99.36	11.32	99.31	11.75	78
7	99.25	12.19	99.20	12.62	99.14	13.05	99.09	13.49	77
8	99.03	13.92	98.97	14.35	98.90	14.78	98.84	15.21	76
9	98.77	15.64	98.70	16.07	98.63	16.50	98.56	16.93	75
10	98.48	17.36	98.40	17.79	98.33	18.22	98.25	18.65	74
11	98.16	19.08	98.08	19.51	97.99	19.94	97.90	20.36	73
12	97.81	20.79	97.72	21.22	97.63	21.64	97.53	22.07	72
13	97.44	22.50	97.34	22.92	97.24	23.34	97.13	23.77	71
14	97.03	24.19	96.92	24.62	96.81	25.04	96.70	25.46	70
15	96.59	25.88	96.48	26.30	96.36	26.72	96.25	27.14	69
16	96.13	27.56	96.00	27.98	95.88	28.40	95.76	28.52	68
17	95.63	29.24	95.50	29.65	95.37	30.07	95.24	30.49	67
18	95.11	30.90	94.97	31.32	94.83	31.73	94.69	32.14	66
19	94.55	32.56	94.41	32.97	94.26	33.38	94.12	33.79	65
20	93.97	34.20	93.82	34.61	93.67	35.02	93.51	35.43	64
21	93.36	35.84	93.20	36.24	93.04	36.65	92.88	37.06	63
22	92.72	37.46	92.55	37.86	92.39	38.27	92.22	38.67	62
23	92.05	39.07	91.88	39.47	91.71	39.87	91.53	40.27	61
24	91.35	40.67	91.18	41.07	91.00	41.47	90.81	41.87	60
25	90.63	42.26	90.45	42.66	90.26	43.05	90.07	43.44	59
26	89.88	43.84	89.69	44.23	89.49	44.62	89.30	45.01	58
27	89.10	45.40	88.90	45.79	88.70	46.17	88.50	46.56	57
28	88.29	46.95	88.09	47.33	87.88	47.72	87.67	48.10	56
29	87.45	48.48	87.25	48.86	87.04	49.24	86.82	49.62	55
30	86.60	50.00	86.38	50.38	86.16	50.75	85.94	51.13	54
31	85.72	51.50	85.49	51.88	85.26	52.25	85.04	52.62	53
32	84.80	52.99	84.57	53.36	84.34	53.73	84.10	54.10	52
33	83.87	54.46	83.63	54.83	83.39	55.19	83.15	55.56	51
34	82.90	55.92	82.66	56.28	82.41	56.64	82.16	57.00	50
35	81.92	57.36	81.66	57.71	81.41	58.07	81.16	58.42	49
36	80.90	58.78	80.64	59.13	80.39	59.48	80.13	59.83	48
37	79.86	60.18	79.60	60.53	79.34	60.88	79.07	61.22	47
38	78.80	61.57	78.53	61.91	78.26	62.25	77.99	62.59	46
39	77.71	62.93	77.44	63.27	77.16	63.61	76.88	63.94	45
40	76.60	64.28	76.32	64.61	76.04	64.94	75.76	65.28	44
41	75.47	65.61	75.18	65.93	74.90	66.26	74.61	66.59	43
42	74.31	66.91	74.02	67.24	73.73	67.56	73.43	67.88	42
43	73.14	68.20	72.84	68.52	72.54	68.84	72.24	69.15	41
44	71.93	69.47	71.63	69.78	71.33	70.09	71.02	70.40	40
45	70.71	70.71							39
Degrees.	DEGREES.		¼ DEGREE.		¼ DEGREE.		¼ DEGREE.		Degrees.
	Dep.	Lat.	Dep.	Lat.	Dep.	Lat.	Dep.	Lat.	

Published by Edward Denny & Co., Stationers, Drawing Materials,  
Mathematical Instruments, Etc., San Francisco.

