

ards Ave.	Prospect to Rushville	
St.	16th to 32nd	
st St.	M. to Webster	20
CL	Maryland to Cleveland	22
Almain	32 to 33	24
	EL. R. to Old town - Rice	26
Place	St. Bush to S. end	27
	St. Marcey to N. Main	28
	EDMUND GRAPE	31
Street	EL. CANON to UNION	36
ECTIC ST.	PIECE TO METEOR	41
AK & DOUGLASS		44
PUDIA	FOR STREET to HICKORY	48
CKORY	AMERICA TO ARISTA	49
LEBAE	W. BAE	50
MROE	GEORGIA to TEXAS	52
VITA & COLLEGE	SIFERD to PROSPECT	57
TECITO WAY	1st to FRONT	65
n ST.	Puebla line to National Ave.	67
hley -	26th to Colton	68

F. B. 89

MICROFILMED
DEC 7 1964

89

Book no. 89.

date

name.

EADS AVE. Jan 20, 1915.

Prospect to Rushville Book 922

Prospect	88.5	Ravina	76.0	80'	78.0
88.0	22.6	81.0	11.8	80'	81.0
155	80'	93.0	Silver St.	80'	83.0
92.0	93.0	83.0	83.0	703'	83.0
Silverado	St.	83.0	83.0	500	83.0
92.0	94.0	97.0	97.0	500	97.0
240'	97.0	97.2	97.0	500	97.0
96.0	97.0	99.5	99.5	100	100.5
50	97.0	99.5	99.5	100	100.5
50	97.0	99.5	99.5	100	100.5
96.0	97.0	99.5	99.5	100	100.5
96.0	97.0	99.5	99.5	100	100.5
160	97.0	99.5	99.5	100	100.5
91.5	91.5	101.0	101.0	80'	102.0
Kline	80' st.	101.0	101.0	200'	102.0
90.0	90.0	112.5	112.5	200'	113.5
200	90.0	112.5	112.5	200'	113.5
200	90.0	112.5	112.5	200'	113.5
80.0	81.5	107.5	107.5	675'	107.5
151	81.5	107.5	107.5	675'	107.5
76.0	78.0	129.0	129.0	80'	130.0
Ravina	80' st.	129.0	129.0	80'	130.0
80' st.	129.0	130.0	130.0	80'	130.0
Genter	80' st.	130.0	130.0	80'	130.0

Genter	St.
129.5	130.5
131.17	132.17
131.35	132.35
131.48	132.48
131.53	132.53
131.54	132.54
131.49	132.49
131.39	132.39
131.23	132.23
131.00	132.00
130.0	131.0

B.M. 87.91 SE corner.
 " 88.95 NW SE corner.

Rushville St.

	Eads Ave.						E.
W.	E.						
SL Prospect St	88.25	88.00	87.73	88.25	87.90	88.50	88.75
155	88.25	88.00	88.08	88.96	89.31	89.91	90.16
100	89.67	89.42	89.42	90.22	90.41	91.01	91.26
50	90.96	90.71	90.63	91.26	91.40	92.00	92.25
0=NL Silverado	92.25	92.00	91.85	92.50	92.40	93.00	93.25
NL.	92.25	92.00	91.85	92.50	92.40	93.00	93.25
Curb	92.00	92.00	91.25	91.50	91.75	92.00	92.00
116	91.00	91.00				92.00	92.00
	91.85	92.03	92.19	92.25	92.51	92.67	92.85
Center	92.50	92.68	92.84	93.00	93.16	93.32	93.50
+1	92.50	92.68	92.84	93.00	93.16	93.32	93.50
+10	92.40	92.58	92.74	92.90	93.06	93.22	93.40
116	92.40	92.58	92.74	92.90	93.06	93.22	93.40
Curb	92.00	92.00				93.00	93.00
	92.00	92.00	92.25	92.50	92.75	93.00	93.00
SL.	92.25	92.00	92.85	93.50	93.40	94.00	94.25
0=SL.	92.25	92.00	92.85	93.50	93.40	94.00	94.25
50	93.88	93.63	93.48	94.13	94.03	94.63	94.88
100	94.50	94.25	94.10	94.75	94.65	95.25	95.50
150	95.13	94.88	94.73	95.38	95.28	95.88	96.13
200	95.76	95.50	95.35	96.00	95.90	96.50	96.75
240	96.25	96.00	95.85	96.50	96.40	97.00	97.25
290	96.45	96.20	96.05	96.70	96.60	97.20	97.45
360	96.25	96.00	95.85	96.50	96.40	97.00	97.25
400	94.56	94.31	94.07	94.63	94.41	94.94	95.19
450	92.16	92.91	92.58	93.06	92.76	93.22	93.47
500=NL Kline	91.75	91.50	91.10	91.50	91.10	91.50	91.75

87.91 B.M. perfect Eads -

10.76							
98.67	88.10	89.91	88.50	89.42	91.01	91.36	12
88.00	10.17	8.76	10.67	9.25	7.66	7.31	
10.67							
92.50	92.50	93.50	93.50	94.13	94.75		
6.17	6.17	6.17	5.17	4.54	3.92		
95.39	96.00	96.00	96.30	96.50	94.63	93.06	94.50
3.29	2.67	2.17	1.77	2.17	4.04	5.61	7.17
92.91	93.22	91.50	9	5.		95.19	
5.76	5.45	7.17				78	

Eads Ave.
€

E.

	W.						
N.L. Kline	9175	9150	9110	9150	9110	9150	9175
Curb	9150	9150	9084	9124	9084	9150	9150
"	9050	9050				9050	9050
"	9090	9013	9059	9099	9059	9013	9090
Center	9075	8975	9035	9075	9035	8975	9075
"	8998	8938	9011	9051	9011	8938	8998
"	8900	8900				8900	8900
Curb	9000	9000	8986	9026	8986	9000	9000
S.L. Kline	9025	9000	8960	9000	8960	9000	9025
0 = S.L. "	9025	9000	8960	9000	8960	9000	9025
50	8775	8750	8720	8770	8743	8788	8813
100	8525	8500	8479	8538	8525	8575	8600
125	8400	8375	8359	8422	8416	8469	8494
150	8275	8250	8239	8306	8308	8363	8388
175	8150	8125	8118	8191	8199	8256	8281
200	8025	8000	7998	8075	8090	8150	8175
225	7926	7901	7901	7980	7999	8059	8084
250	7827	7802	7804	7885	7909	7969	7994
275	7728	7703	7707	7790	7818	7878	7903
N.L. Ravina	7625	7600	7610	7700	7740	7800	7825
Ravina St. Intersection							
N.L. "	7625	7600	7610	7700	7740	7800	7825
Curb	7600	7600	7550	7600	7650	7800	7800
"	7500	7500				7700	7700
"	7560	7595	7628	7660	7693	7725	7760
Center	7600	7635	7668	7700	7733	7765	7800
"	7560	7595	7628	7660	7693	7725	7760
"	7500	7500				7700	7700
Curb	7600	7600	7550	7600	7650	7800	7800
S.L. "	7625	7600	7610	7700	7740	7800	7825

88.67 H.S.	90.00	91.68	87.50	87.89
90.75	8.67	89.99	4.93	3.95
7.92		91.54	85.75	85.00
		91.83 H.S.	6.08	6.83
82.50	83.63	80.00	81.50	79.02
9.33	8.20	77.83	70.33	79.69
				1273
76.00	78.00			79.10 H.S.
12.41	10.51	81.00		9.31
		3.88		88.91 H.S.
		84.88 H.S.		
		77.40		
		74.8		

	W	Eads Ave.					E
SL. Raring	7625	7600	7610	7700	7740	7800	7825
100	7705	7676	7683	7768	7797	7856	7881
75	7807	7782	7777	7851	7863	7917	7942
50	7913	7888	7871	7934	7929	7978	8003
25	8019	7994	7966	8017	7994	8039	8062
0=N.L. Silver	8125	8100	8060	8100	8060	8100	8125
Curb	8100	8100	8095	8135	8095	8135	8160
"L	8000	8000					
	8110	8050	8128	8168	8128	8168	8193
Centering	8200	8100	8160	8200	8160	8200	8225
"L	8240	8150	8193	8233	8193	8233	8258
Curb	8200	8200					
	8300	8200	8225	8265	8225	8265	8290
0=Sh. Silver	8325	8300	8260	8300	8260	8300	8325
25	8408	8383	8344	8385	8347	8388	8413
50	8490	8465	8428	8470	8433	8475	8500
100	8655	8630	8595	8640	8606	8650	8675
150	8820	8795	8763	8810	8779	8825	8850
200	8985	8960	8930	8980	8952	9000	9025
250	9150	9125	9098	9150	9125	9175	9200
300	9315	9290	9265	9320	9298	9350	9375
350	9480	9455	9433	9490	9471	9525	9550
400	9645	9620	9600	9660	9644	9700	9725
450	9810	9785	9768	9830	9817	9875	9900
500=N.L. Pearl	9975	9950	9925	10000	9990	10050	10075

8841 H.I.	7898	7928	8100	820
76.76	7856	9.53	8.63	7.41
11.65	9.85			6.41
8300	8475	8165	8650	8630
5.41	3.66	3.76	1.91	2.11
8795	8821	1134	70.0	89.60
0.46	0.16	99.59	4.59	10.04
93.50	92.90	94.35	95.25	92.00
6.09	6.69	5.04	4.34	2.59
0.91	83.25			
98.78 J.P.	5.03			
	88.28	H.I.	7797	7740
	52.00		10.31	10.88
	6.28			

4

	W. Eads Ave.								
N.L. Pearl	9975	9950	9935	10000	9990	10050	10075		E.
Curb	9950	9950	9961	10026	10016	10050	10050		
116	9850	9850				9950	9950		
	9948	9888	9986	10051	10041	9988	10048		
Center	10025	9925	10010	10075	10065	10025	10125		
116	10040	9963	10034	10099	10089	10063	10140		
Curb	10000	10000				10100	10100		
	10100	10100	10059	10124	10114	10200	10200		
0 = S.L. Pearl	10125	10100	10085	10150	10140	10200	10225		
50	10269	10244	10229	10294	10284	10344	10369		
100	10413	10388	10373	10438	10428	10488	10513		
150	10556	10531	10516	10581	10571	10631	10656		
200	10700	10675	10660	10725	10715	10775	10800		
250	10844	10819	10804	10869	10859	10919	10944		
300	10988	10963	10948	11013	11003	11063	11088		
350	11131	11106	11091	11156	11146	11206	11231		
400	11275	11250	11235	11300	11290	11350	11375		
450	11397	11372	11357	11422	11412	11472	11497		
500	11519	11494	11479	11544	11534	11594	11619		
550	11642	11617	11602	11667	11657	11717	11742		
600	11764	11739	11724	11789	11779	11839	11864		
650	11886	11861	11846	11911	11901	11961	11986		
700	12008	11983	11968	12033	12023	12083	12108		
750	12131	12106	12091	12156	12146	12206	12231		
800	12253	12228	12213	12278	12268	12328	12353		
850	12375	12350	12335	12400	12390	12450	12475		
900	12497	12472	12457	12522	12512	12572	12597		
950	12619	12594	12579	12644	12634	12694	12719		
1000	12742	12717	12702	12767	12757	12817	12842		
1050	12864	12839	12824	12889	12879	12939	12964		
1075 = NL Center	12925	12900	12885	12950	12940	13000	13025		

10.94								
98.78								
109.72	H.I.							
99.50	100.50							
	9.22							
10.22								
102.44	103.44	104.88	105.31	107.75	108.19			
	7.28	6.28	4.84	4.41	1.97	1.53		
0.18								
109.54	110.63	111.06	113.50	113.72	115.94	116.17		
11.65	10.56	10.13	7.69	7.47	5.25	5.02		
121.19	H.I.							
118.39	118.61	120.83	121.19	123.28	123.50	128.17		
	2.80	0.36	121.19	10.35	70.13	5.46		
	3.63		124.4					
			133.63	H.I.	125.72	125.94	128.39	
			121.06		7.91	7.69	5.24	
			4.88					
			105.88	H.I.				
			10.25					
			3.63					
			3.11					
			100.75					
			103.86	H.I.				

Chk. O.K. } Childs
 Sept. 3/15 } Evans
 } Strand

Eads Ave.
E.

W.
0

E.

N.L. Genfer	12925	12900	12885	12950	12940	13000	13025
Curb	12900	12900	12893	12958	12948	13000	13000
"	12800	12800				12900	12900
"	12873	12813	12902	12967	12957	12913	12973
Center g	12925	12825	12910	12975	12965	12925	13025
"	12890	12838	12918	12983	12973	12938	12990
Curb	12850	12850				12950	12950
"	12950	12950	12927	12992	12982	13050	13050
SL	12975	12950	12935	13000	12990	13050	13075
o=SL Genfer	12975	12950	12935	13000	12990	13050	13075
50	13017	12992	12977	13042	13032	13092	13117
100	13059	13034	13018	13084	13074	13134	13159
150	13100	13075	13060	13125	13115	13175	13200
200	13142	13117	13102	13167	13157	13217	13242
225	13160	13135	13120	13185	13175	13235	13260
250	13173	13148	13133	13198	13188	13248	13273
275	13178	13153	13138	13203	13193	13253	13278
300	13179	13154	13139	13204	13194	13254	13279
325	13174	13149	13134	13199	13189	13249	13274
350	13164	13139	13124	13189	13179	13239	13264
375	13148	13123	13108	13173	13163	13223	13248
400	13125	13100	13085	13150	13140	13200	13225
450	13075	13050	13035	13100	13090	13150	13175
Rushville 500=N.L.	13025	13000	12985	13050	13040	13100	13125

13363 HI	13050	12992	13134	13025	13217
12925	3.13	3.71	2.29	2.88	7.46
4.38					
13148	13237	13139	1320	13050	1310
2.18	1.09	2.24	1.63	3.13	2.636
129	130	145.2	145.2	145.2	145.2
123	124	145.8	145.8	145.8	145.8
13254	13149	135.02	135.02	135.02	135.02
3.08	4.13	2.72	2.72	2.72	2.72
13239	13143	136.74	136.74	136.74	136.74
3.23	4.39	7.43	7.43	7.43	7.43
1275		128.31	128.31	128.31	128.31
124.5		132.50	132.50	132.50	132.50
		3.72	3.72	3.72	3.72
		124.5	124.5	124.5	124.5
		131.58	131.58	131.58	131.58
		129.0	129.0	129.0	129.0
		2.58	2.58	2.58	2.58
		7.09	7.09	7.09	7.09
		123.0	123.0	123.0	123.0
		8.39	8.39	8.39	8.39

N ST
Book 959

16th

St.

19th

St

22nd

St.

25th
St.

11.00

80

12.50

28.50

80

29.50

44.50

80

45.50

53.40

100

54.40

Z

200

Z

200

Z

200

Z

140

alley

200

16.00

17.00

33.00

34.00

46.50

53.40

53.80

54.40

17th

St.

20th

St.

24th

24th
St.

200

200

60

600

600

100

42.56

17.50

18.50

34.00

35.00

47.50

80

48.50

59.00

59.00

26th
St.

22.00

24.00

40.00

41.00

48.00

100

49.00

60.00

60.00

18th

St

21st

St.

24th

24th
St.

Z

600

100

42.56

23.14

80

25.00

41.00

42.00

49.87

Z

600

60.00

600

Kearney Ave
23.54
23.54
172.01

STREET

200

STREET

200

Harrison Ave

STREET

600

Franklin Ave

STREET

600

100

42.56

27.00

28.50

44.50

45.50

53.40

100

53.40

54.40

63.60

63.60

19th

St

22nd

St.

24th

25th
St.

27th
St.

28.50

80

29.50

45.10

80

46.50

53.40

100

53.80

54.40

64.00

80

64.00

Irving Ave

Harrison Ave

Crosby St.

Woodman Ave

Dewey St.

Franklin Ave

Crosby St.

1058

200

1158

156.54

219.07

100

112.80

91.01

31.41

125.54

194.56

80

45.10

46.03

46.50

47.50

48.00

48.80

49.87

52.20

53.40

53.80

52.20

53.40

53.40

53.80

55.10

59.00

60.00

60.00

63.60

64.00

80

80

100

100

140

200

80

60

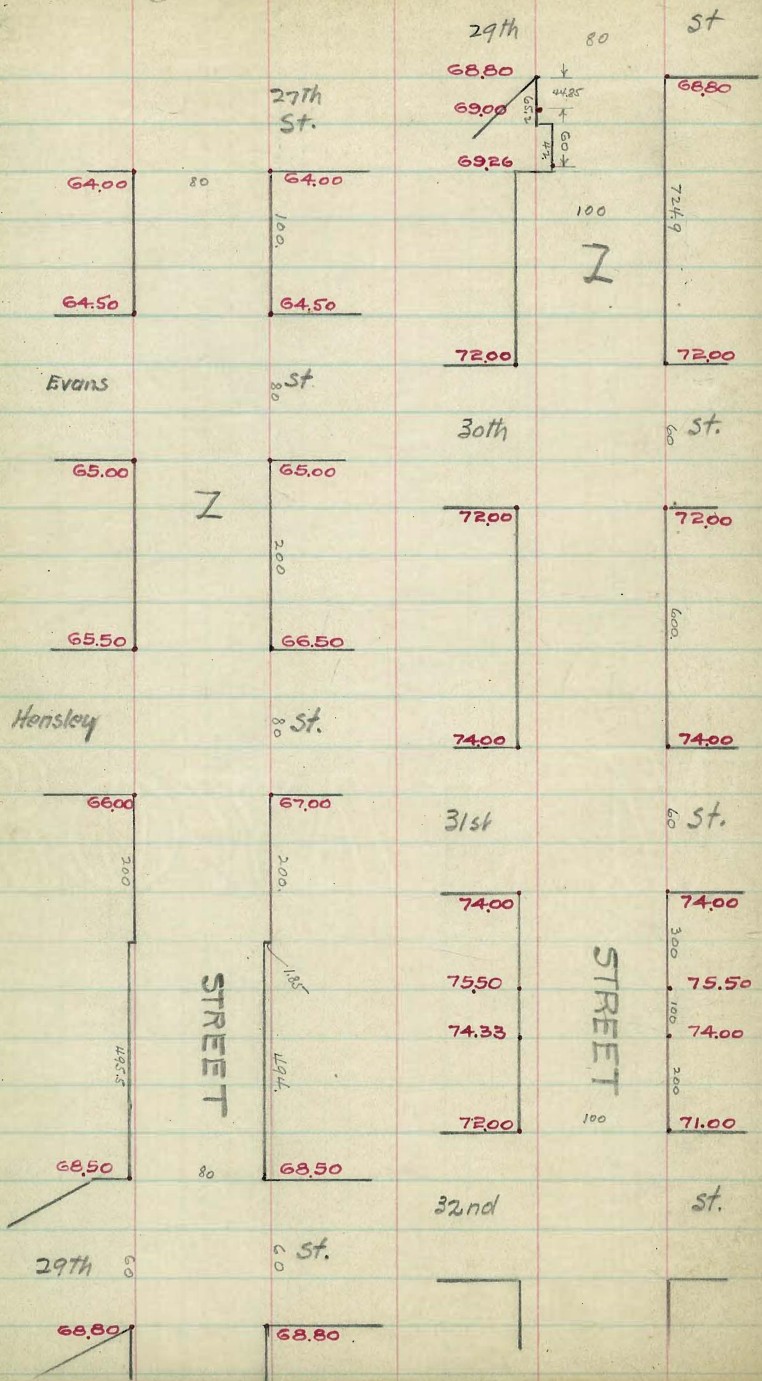
100

600

600

100

80



N. St.

9

	S		£				N
0=EL 16th St	11.25	11.00	10.98	11.75	11.90	12.50	12.75
50	12.50	12.75	12.20	12.94	13.03	13.63	13.88
100	13.75	13.50	13.42	14.13	14.15	14.75	15.00
150	15.00	14.75	14.63	15.31	15.28	15.88	16.13
200=WL 17th W	16.25	16.00	15.85	16.50	16.40	17.00	17.25
W curb ¹⁴	16.00 15.00	16.00 15.00	16.11	16.16	16.66	17.00 16.00	17.00 16.00
W 1/4 ¹³	15.98	15.38	16.36	17.01	16.91	16.38	16.98
£ ¹³	16.75	15.75	16.60	17.25	17.15	16.75	17.75
E 1/4 ¹³	16.90	16.13	16.84	17.49	17.39	17.13	17.90
E curb ¹³	16.50 17.50	16.50 17.50	17.09	17.74	17.64	17.50 18.50	17.50 18.50
0=EL 17th St ¹⁴	17.75	17.50	17.35	18.00	17.90	18.50	18.75
50	18.88	18.63	18.54	19.25	19.28	19.88	20.13
100	20.00	19.75	19.73	20.50	20.65	21.25	21.50
150	21.13	20.88	20.91	21.75	22.03	22.63	22.88
200=WL 18th St	22.25	22.00	22.10	23.00	23.40	24.00	24.25
W curb ¹⁴	22.00 21.00	22.00 21.00	22.29	23.19	23.58	24.00 23.00	24.00 23.00
W 1/4 ¹³	21.89	21.23	22.47	23.36	23.74	23.25	23.85
£ ¹³	22.57	21.45	22.65	23.54	23.90	23.50	24.50
E 1/4 ¹³	22.68	21.68	22.83	23.71	24.06	23.75	24.40
E curb ¹³	22.54	21.90	23.02	23.88	24.22	24.00 25.00	24.00 25.00
0=EL 18th St ¹⁴	22.14	22.14	23.21	24.07	24.40	25.00	25.25
532=ncurb Krammy	23.22 23.22	23.22 23.22	23.29	24.15	24.49	25.09	25.34
27.29=nb Krammy	23.79	23.54	23.63	24.51	24.88	25.48	25.73
77.29	24.79	24.54	24.60	25.45	25.75	26.35	26.60
127.29	25.79	25.54	25.57	26.39	26.63	27.23	27.48
177.29	26.80	26.55	25.54	27.32	27.50	28.10	28.35
200=WL 19th St	27.25	27.00	26.98	27.75	27.90	28.50	28.75

	S						N
W.L. 19th St	27.25	27.00	26.98	27.75	27.90	28.50	28.75
W curb	27.00 26.00	27.00 26.00	27.22	27.99	28.08	28.50 27.50	28.50 27.50
W 1/4	26.98	26.38	27.44	28.19	28.24	27.75	28.35
⊕	27.75	26.75	27.66	28.39	28.40	28.00	29.00
E 1/4	27.90	27.11	27.88	28.59	28.56	28.25	28.90
E curb	27.50 28.50	27.50 28.50	28.11	28.78	28.72	28.50 29.50	28.50 29.50
0 = E.L. 19th St	28.75	28.50	28.35	29.00	28.90	29.50	29.75
35	29.54	29.29	29.14	29.79	29.69	30.29	30.54
50	29.88	29.63	29.48	30.13	30.03	30.63	30.88
65	30.21	29.96	29.81	30.46	30.36	30.96	31.21
100	31.00	30.75	30.60	31.25	31.15	31.75	32.00
150	32.13	31.88	31.73	32.38	32.28	32.88	33.13
200 = W.L. 20th	33.25	33.00	32.85	33.50	33.40	34.00	34.25
W curb	33.00 32.00	33.00 32.00	33.03	33.62	33.52	34.00 33.00	34.00 33.00
W 1/4	32.85	32.25	33.19	33.82	33.72	33.25	33.85
⊕	33.50	32.50	33.35	34.00	33.90	33.50	34.50
E 1/4	33.40	32.75	33.51	34.16	34.06	33.75	34.40
E curb	33.00 34.00	33.00 34.00	33.67	34.32	34.22	34.00 35.00	34.00 35.00
0 = E.L. 20th	34.75	34.00	33.85	34.50	34.40	35.00	35.25
25	35.00	34.75	34.60	35.25	35.15	35.75	36.00
50	35.75	35.50	35.25	36.00	35.90	36.50	36.75
100	37.25	37.00	36.85	37.50	37.40	38.00	38.25
150	38.75	38.50	38.35	39.00	38.90	39.50	39.75
200 = W.L. 21st	40.25	40.00	39.85	40.50	40.40	41.00	41.25
W curb	40.00 39.00	40.00 39.00	40.03	40.62	40.52	41.00 40.00	41.00 40.00
W 1/4	39.85	39.25	40.19	40.82	40.72	40.25	40.85
⊕	40.50	39.50	40.35	41.00	40.90	40.50	41.50
E 1/4	40.40	39.75	40.51	41.16	41.06	40.75	41.40
E curb	40.00 41.00	40.00 41.00	40.67	41.32	41.22	41.00 42.00	41.00 42.00
E.L. 21st St	41.25	41.00	40.85	41.50	41.40	42.00	42.25

	S		¢			N	
W. 24th St for 100' St.	47.75	47.50	47.35	48.00	47.90	48.50	48.75 49.13
W curb	47.83	47.68	47.43	48.02	47.98	48.50 47.50	48.50 47.88
W 1/4	47.91	47.66	47.51	48.16	48.06	47.63	47.48
¢	48.00	47.75	47.60	48.25	48.15	47.75	48.94
5/4	48.02	47.83	47.68	48.33	48.23	47.88	48.60
E curb	48.16	47.91	47.76	48.41	48.31	48.00 49.00	48.00 49.00
O = E L. 24th St	48.75	48.00	47.85	48.50	48.40	49.00	49.75
20	48.39	48.14	48.00	48.66	48.58	49.18	49.43
35	48.50	48.25	48.12	48.78	48.72	49.32	49.57
75	48.79	48.54	48.42	49.10	49.08	49.68	49.93
111.58 = W.L. Harrison	49.05	48.80	48.70	49.40	49.40	50.00	50.75
136.63 = W curb	48.80 47.80	48.80 47.80	48.89	49.60	49.63	50.23	50.48
163.24 = W 1/4	48.67	48.07	49.09	49.81	49.87	50.47	50.72
189.85 = ¢	49.34	48.34	49.28	50.02	50.11	50.71	50.96
216.46 = E 1/4	49.27	48.61	49.48	50.23	50.35	50.95	51.20
243.07 = E curb	48.87 49.87	48.87 49.87	49.67	50.44	50.59	51.19	51.44
268.12 = E.L. Harrison	50.12	49.87	49.86	50.64	50.81	51.41	51.66
318.12	50.65	50.40	50.37	51.13	51.26	51.86	52.11
368.12	51.18	50.93	50.88	51.62	51.71	52.31	52.56
418.12	51.72	51.47	51.39	52.11	52.16	52.76	53.01
468.12	52.25	52.00	51.90	52.60	52.61	53.21	53.46
487.19 = W.L. Crosby	52.45	52.20	52.10	52.79	52.78	53.38	53.63

48719 E of 24th St	52.45	52.20	52.10	52.79	52.78	53.38	53.63
= W.L. Crosby							
50829 = W.Curt	52.20	52.20	52.32	53.00	52.97	53.57	53.82
1960 1960	51.20	51.20	51.50	52.51	52.19	53.15	53.75
527.89 = W/4	52.10	51.50					54.00
1960 1960	51.80	51.80	52.71	53.38	53.33	53.93	54.18
54749 = ϕ	52.80	51.80					
1960 1960	52.80	52.10	52.91	53.58	53.50	54.10	54.35
56709 = E/4	52.80	52.10					
1960 1960	52.40	52.40	53.11	53.77	53.68	54.28	54.53
58669 = E.Curt	52.40	52.40	53.11	53.77	53.68	54.28	54.53
600 = W.L. 25th St	53.65	53.40	53.25	53.90	53.80	54.40	54.65
1961 1961	53.40	53.40	53.25	53.90	53.80	54.40	54.65
500 = W.L. 25th St	53.65	53.40	53.25	53.90	53.80	54.40	54.65
1961 1961	53.40	53.40	53.25	53.90	53.80	54.40	54.65
E.L. Crosby	53.65	53.40	53.25	53.90	53.80	54.40	54.65
1961 1961	53.40	53.40	53.25	53.90	53.80	54.40	54.65
W.Curt 25th	53.65	53.40	53.25	53.90	53.80	54.40	54.65
1961 1961	53.40	53.40	53.25	53.90	53.80	54.40	54.65
W/4	53.65	53.40	53.25	53.90	53.80	54.40	54.65
1961 1961	53.40	53.40	53.25	53.90	53.80	54.40	54.65
ϕ	53.65	53.40	53.25	53.90	53.80	54.40	54.65
1961 1961	53.40	53.40	53.25	53.90	53.80	54.40	54.65
E/4	53.65	53.40	53.25	53.90	53.80	54.40	54.65
1961 1961	53.40	53.40	53.25	53.90	53.80	54.40	54.65
E.Curt	53.65	53.40	53.25	53.90	53.80	54.40	54.65
1961 1961	53.40	53.40	53.25	53.90	53.80	54.40	54.65
O = E.L. 25th St	53.65	53.40	53.25	53.90	53.80	54.40	54.65
1961 1961	53.40	53.40	53.25	53.90	53.80	54.40	54.65
255	53.92	53.67	53.50	54.13	54.02	54.61	54.86
371 = W.L. Woodman	54.05	53.80	53.62	54.24	54.12	54.71	54.96
1961 1961	53.80	53.73	54.34	54.92	54.80	55.05	55.30
488	53.92	53.80	54.41	54.99	54.87	55.12	55.37
5968 = W.Curt	53.80	53.80	54.41	54.99	54.87	55.12	55.37
1961 1961	53.80	53.80	54.41	54.99	54.87	55.12	55.37
669	53.13	52.94	52.91	54.51	54.37	54.95	55.20
8008 = W/4	53.73	53.13	54.02	54.63	54.49	55.06	55.31
100.48 = ϕ	54.45	53.45	54.23	54.82	54.66	55.23	55.48
156 204	54.49	53.71	54.39	54.96	54.80	55.35	55.60
116.08	54.49	53.71	54.39	54.96	54.80	55.35	55.60
120.88 = E/4	54.50	53.78	54.43	55.00	54.84	55.39	55.64
141.78 = E.Curt	54.10	54.10	54.63	55.19	55.01	55.57	55.82
2172	55.10	55.10	55.63	56.19	56.01	56.57	56.82
16325 = E.L. Woodman	55.35	55.10	54.85	55.39	55.20	55.74	55.99

5
N

7 5+

0 = F.L. Woolman

55.35 55.10 54.85 55.39 55.20 55.74 55.99

50

55.84 55.59 55.32 55.84 55.63 56.15 56.40

100

56.33 56.08 55.80 56.30 56.06 56.56 56.81

150

56.82 56.57 56.27 56.75 56.48 56.97 57.22

200

57.32 57.07 56.74 57.21 56.91 57.38 57.63

250

57.81 57.56 57.21 57.66 57.34 57.79 58.04

300

58.30 58.05 57.69 58.12 57.77 58.21 58.46

350

58.79 58.54 58.16 58.57 58.20 58.62 58.87

396.75 = W.L. 26%

59.25 59.00 58.60 59.00 58.60 59.00 59.25

W Curt

57.00 57.00 58.76 59.16 58.76 59.00 59.00

W/A

58.85 58.20 58.93 59.33 58.93 58.25 58.85

¢

59.50 58.40 59.10 59.50 59.10 58.50 59.50

F/A

57.41 58.60 59.26 59.76 59.26 58.75 59.40

F Curt

59.33 58.80 59.43 59.83 59.43 59.00 59.00

0 = E.L. 26%

59.75 59.00 59.60 60.00 59.60 60.00 60.25

2.92 = W/A Tower

59.22 59.00 59.61 60.02 59.61 60.02 60.27

15.93 = ¢

59.11 59.00 59.65 60.10 59.70 60.10 60.35

28.94 = E/A

59.00 59.00 59.69 60.17 59.77 60.17 60.42

54.72 = W/A Franklin

59.60 59.00 59.77 60.33 59.93 60.33 60.58

75.04 = ¢

60.00 59.00 59.83 60.45 60.05 60.45 60.70

95.36 = E/A

59.60 59.00 59.89 60.59 60.17 60.57 60.82

115.68 = E Curt

59.00 59.00 59.95 60.69 60.29 60.69 60.94

137.56 = E.L. Franklin

60.25 60.00 60.00 60.02 60.83 60.43 60.83 61.08

177.56 = E.L. Franklin

60.25 60.00 60.00 60.02 60.83 60.43 60.83 61.08

177.56 = E.L. Franklin

60.25 60.00 60.00 60.02 60.83 60.43 60.83 61.08

177.56 = E.L. Franklin

60.25 60.00 60.00 60.02 60.83 60.43 60.83 61.08

177.56 = E.L. Franklin

60.25 60.00 60.00 60.02 60.83 60.43 60.83 61.08

177.56 = E.L. Franklin

60.25 60.00 60.00 60.02 60.83 60.43 60.83 61.08

177.56 = E.L. Franklin

60.25 60.00 60.00 60.02 60.83 60.43 60.83 61.08

177.56 = E.L. Franklin

60.25 60.00 60.00 60.02 60.83 60.43 60.83 61.08

177.56 = E.L. Franklin

60.25 60.00 60.00 60.02 60.83 60.43 60.83 61.08

177.56 = E.L. Franklin

60.25 60.00 60.00 60.02 60.83 60.43 60.83 61.08

177.56 = E.L. Franklin

60.25 60.00 60.00 60.02 60.83 60.43 60.83 61.08

177.56 = E.L. Franklin

60.25 60.00 60.00 60.02 60.83 60.43 60.83 61.08

177.56 = E.L. Franklin

60.25 60.00 60.00 60.02 60.83 60.43 60.83 61.08

14

N. St

14

H

F

S

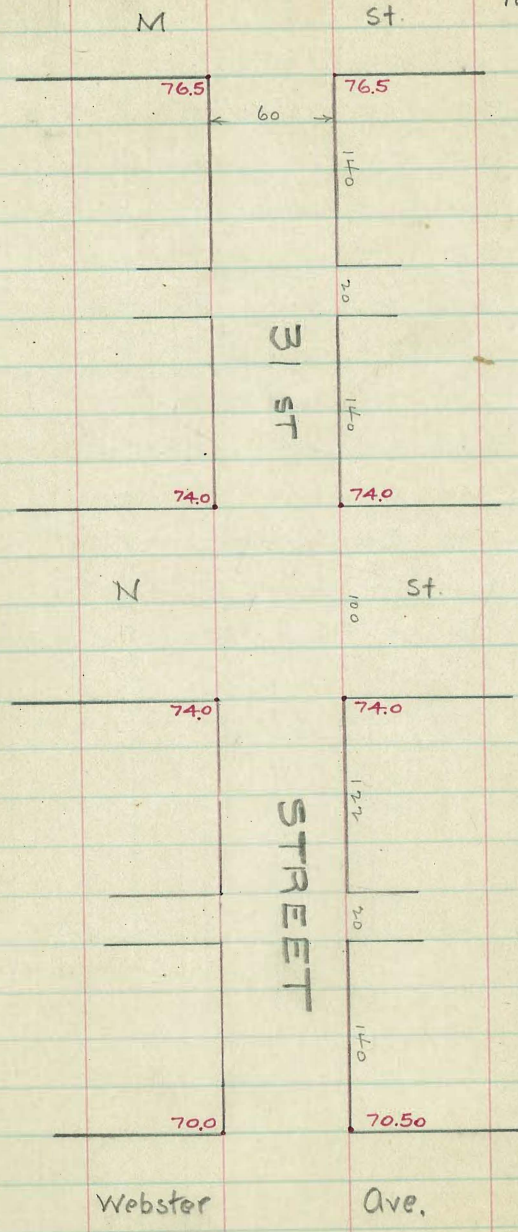
	S		±				N
0=E.L. Franklin	60.25	60.00	60.02	60.83	60.43	60.83	61.08
62.44	60.74	60.49	60.45	61.20	60.80	61.20	61.45
112.48	61.13	60.88	60.79	61.50	61.10	61.50	61.75
162.44	61.51	61.26	61.14	61.80	61.40	61.80	62.05
212.44	61.90	61.65	61.48	62.10	61.70	62.10	62.35
262.44	62.29	62.04	61.82	62.40	62.00	62.40	62.65
312.44	62.68	62.43	62.17	62.70	62.30	62.70	62.95
362.44	63.07	62.82	62.51	63.00	62.60	63.00	63.25
412.44	63.46	63.21	62.86	63.30	62.90	63.30	63.55
462.44=WL 27th	63.85	63.60	63.20	63.60	63.20	63.60	63.85
W curb	63.94	63.69	63.29	63.69	63.29	63.60 62.60	63.60 62.60
W 1/4	64.00	63.75	63.35	63.75	63.35	62.70	63.20
±	64.05	63.80	63.40	63.80	63.40	62.80	63.80
E 1/4	64.10	63.85	63.45	63.85	63.45	62.90	63.60
E curb	64.16	63.91	63.51	63.91	63.51	63.00 64.00	63.00 64.00
0=E.L. 27th St	64.25	64.00	63.60	64.00	63.60	64.00	64.25
50	64.50	64.25	63.85	64.25	63.85	64.25	64.50
100=WL Evans	64.75	64.50	64.10	64.50	64.10	64.50	64.75
W curb	64.50 63.50	64.50 63.50	64.19	64.59	64.19	64.50 63.50	64.50 63.50
W 1/4	64.23	63.63	64.27	64.67	64.27	63.63	64.23
±	64.75	63.75	64.35	64.75	64.35	63.75	64.75
E 1/4	64.40	63.88	64.43	64.83	64.43	63.88	64.40
E curb	64.00 65.00	64.00 65.00	64.51	64.91	64.51	64.00 65.00	64.00 65.00
FL Evans	65.25	65.00	64.60	65.00	64.60	65.00	65.25

	S		£			N	
W.L. 29th St	68.75	68.50	68.10	68.50	68.10	68.50	68.75
W. curb	68.50	68.50	68.15	68.55	68.15	68.50	68.50
	67.50	67.50				67.50	67.50
W 1/4	68.10	67.58	68.20	68.60	68.20	67.58	68.10
£	68.65	67.65	68.25	68.65	68.25	67.65	68.65
E 1/4	68.40	67.73	68.30	68.70	68.30	67.73	68.40
E curb	67.80	67.80	68.35	68.75	68.35	67.80	67.80
	68.80	68.80				68.80	68.80
0 = E.L. 29th St	69.05	68.80	68.40	68.80	68.40	68.80	69.05
50	69.27	69.02	68.62	69.02	68.62	69.02	69.27
107.2 = dog	69.52	69.27	68.87	69.27	68.87	69.27	69.52
157.2	69.74	69.49	69.09	69.49	69.09	69.49	69.74
207.2	69.96	69.71	69.31	69.71	69.31	69.71	69.96
257.2	70.19	69.94	69.54	69.94	69.54	69.94	70.19
307.2	70.41	70.16	69.76	70.16	69.76	70.16	70.41
357.2	70.63	70.38	69.98	70.38	69.98	70.38	70.63
407.2	70.85	70.60	70.20	70.60	70.20	70.60	70.85
457.2	71.07	70.82	70.42	70.82	70.42	70.82	71.07
507.2	71.29	71.04	70.64	71.04	70.64	71.04	71.29
557.2	71.51	71.26	70.86	71.26	70.86	71.26	71.51
607.2	71.73	71.48	71.08	71.48	71.08	71.48	71.73
657.2	71.95	71.70	71.30	71.70	71.30	71.70	71.95
724.9 = W.L. 30th	72.25	72.00	71.60	72.00	71.60	72.00	72.25
W curb	72.00	72.00	71.60	72.00	71.60	72.00	72.00
	71.80	71.80				71.80	71.80
W 1/4	71.60	71.00	71.60	72.00	71.60	71.00	71.60
£	72.00	71.00	71.60	72.00	71.60	71.00	72.00
E 1/4	71.60	71.00	71.60	72.00	71.60	71.00	71.60
E curb	71.00	71.00	71.60	72.00	71.60	71.00	71.00
	72.00	72.00				72.00	72.00
E.L. 30th St	72.25	72.00	71.60	72.00	71.60	72.00	72.25

	S		£		N		
0=EL 30th St	72.25	72.00	71.60	72.00	71.60	72.00	72.25
50	72.42	72.17	71.77	72.17	71.77	72.17	72.42
100	72.58	72.33	71.93	72.33	71.93	72.33	72.58
150	72.75	72.50	72.10	72.50	72.10	72.50	72.75
200	72.92	72.67	72.27	72.67	72.27	72.67	72.92
250	73.08	72.83	72.43	72.83	72.43	72.83	73.08
280	73.18	72.93	72.53	72.93	72.53	72.93	73.18
300	73.25	73.00	72.60	73.00	72.60	73.00	73.25
311	73.29	73.04	72.64	73.04	72.64	73.04	73.29
350	73.42	73.17	72.77	73.17	72.77	73.17	73.42
400	73.58	73.33	72.93	73.33	72.93	73.33	73.58
450	73.75	73.50	73.10	73.50	73.10	73.50	73.75
482	73.86	73.61	73.21	73.61	73.21	73.61	73.86
500	73.92	73.67	73.27	73.67	73.27	73.67	73.92
550	74.08	73.83	73.43	73.83	73.43	73.83	74.08
600=V.L. 31st	74.25	74.00	73.60	74.00	73.60	74.00	74.25
V curb	74.00	74.00	73.60	74.00	73.60	74.00	74.00
	73.00	73.00				73.00	73.00
W/A	73.60	73.00	73.60	74.00	73.60	73.00	73.60
£	74.00	73.00	73.60	74.00	73.60	73.00	74.00
E/A	73.60	73.00	73.60	74.00	73.60	73.00	73.60
E curb	73.00	73.00	73.60	74.00	73.60	73.00	73.00
	74.00	74.00				74.00	74.00
EL 31st St	74.25	74.00	73.60	74.00	73.60	74.00	74.25

	S			€			N
0 = FL 31st St	74.25	74.00	73.60	74.00	73.60	74.00	74.25
50	74.50	74.25	73.85	74.25	73.85	74.25	74.50
100	74.75	74.50	74.10	74.50	74.10	74.50	74.75
150	75.00	74.75	74.35	74.75	74.35	74.75	75.00
200	75.25	75.00	74.60	75.00	74.60	75.00	75.25
250	75.50	75.25	74.85	75.25	74.85	75.25	75.50
300	75.75	75.50	75.10	75.50	75.10	75.50	75.75
350	75.17	74.92	74.48	74.83	74.39	74.75	75.00
400	74.58	74.33	73.87	74.17	73.68	74.00	74.25
450	74.00	73.75	73.25	73.50	72.98	73.25	73.50
500	73.42	73.17	72.63	72.83	72.27	72.50	72.75
550	72.83	72.58	72.02	72.17	71.56	71.75	72.00
600 = W.L. 32nd St	72.25	72.00	71.40	71.50	70.85	71.00	71.25

60' wide
10' walks



M

St.

76.5

76.5

60

140

20

31st

140

74.0

74.0

N

St.

100

74.0

74.0

STREET

127

20

140

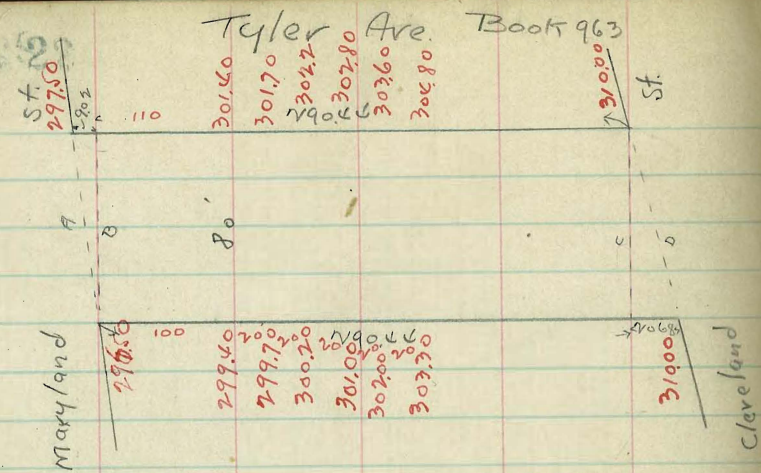
70.0

70.5

Webster

Ave.

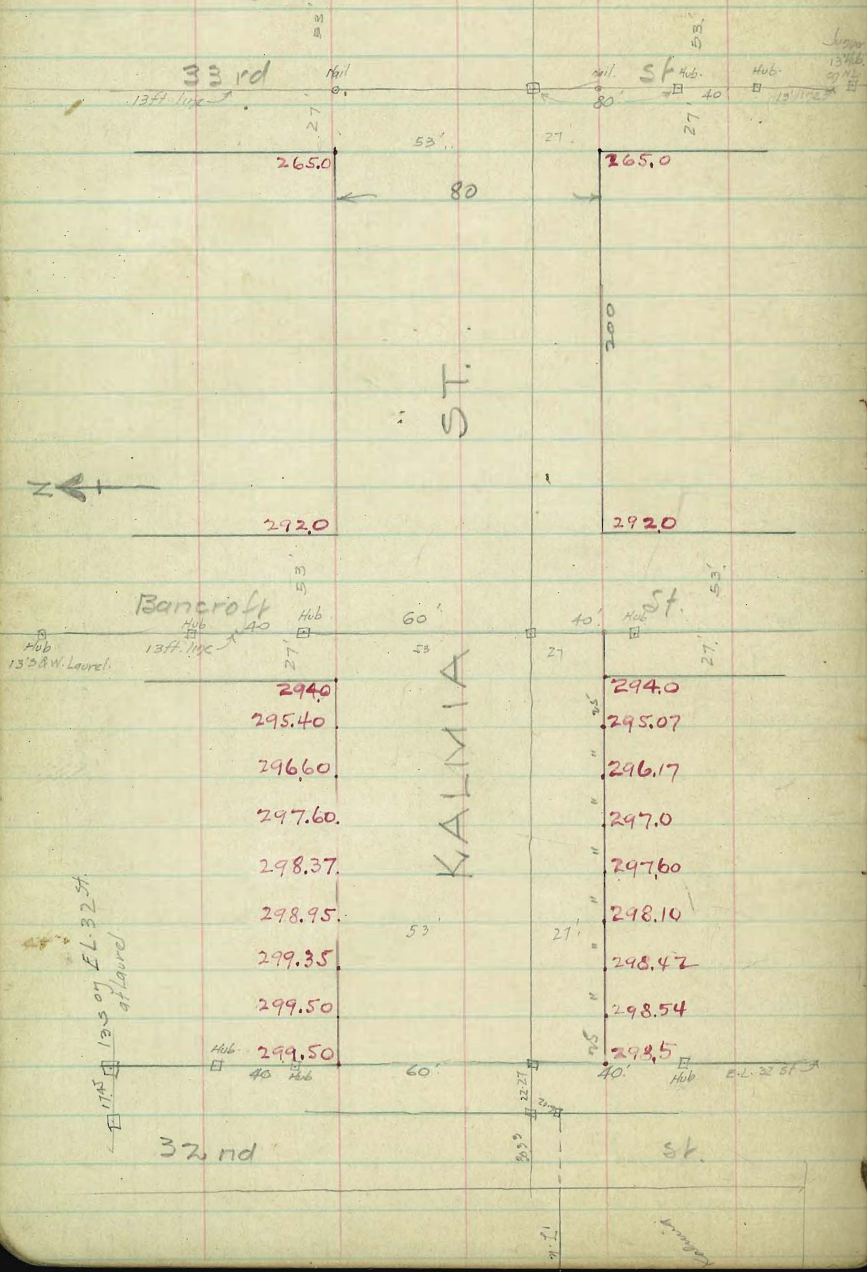
	W			£			E
0=SL M st	76.75	76.50	76.10	76.50	76.10	76.50	76.75
25	76.54	76.29	75.89	76.29	75.89	76.29	76.54
50	76.33	76.08	75.68	76.08	75.68	76.08	76.33
75	76.13	75.88	75.48	75.88	75.48	75.88	76.13
100	75.92	75.67	75.27	75.67	75.27	75.67	75.92
125	75.71	75.46	75.06	75.46	75.06	75.46	75.71
150	75.50	75.25	74.85	75.25	74.85	75.25	75.50
175	75.29	75.04	74.64	75.04	74.64	75.04	75.29
200	75.08	74.83	74.43	74.83	74.43	74.83	75.08
225	74.88	74.63	74.23	74.63	74.23	74.63	74.88
250	74.67	74.42	74.02	74.42	74.02	74.42	74.67
275	74.46	74.21	73.81	74.21	73.81	74.21	74.46
300=N.L. N st.	74.25	74.00	73.60	74.00	73.60	74.00	74.25
0=SL N st	74.25	74.00	73.60	74.00	73.60	74.00	74.25
25	73.89	73.64	73.26	73.67	73.27	73.69	73.94
50	73.54	73.29	72.91	73.34	72.94	73.38	73.63
75	73.19	72.94	72.57	73.00	72.62	73.07	73.32
100	72.83	72.58	72.23	72.67	72.29	72.76	73.01
125	72.48	72.23	71.88	72.34	71.96	72.45	72.70
150	72.12	71.87	71.54	72.01	71.63	72.14	72.39
175	71.77	71.52	71.20	71.67	71.30	71.83	72.08
200	71.41	71.16	70.86	71.34	70.98	71.52	71.77
225	71.06	70.81	70.51	71.01	70.65	71.21	71.46
250	70.70	70.45	70.17	70.68	70.32	70.90	71.15
275	70.35	70.10	69.83	70.34	69.99	70.59	70.84
300=N.L. Webster	70.25	70.00	69.73	70.25	69.90	70.50	70.75



	N.	E.	S.		
W.L. Cleveland Sect. D =	31045	31000	30960	31000 30960 31000 31045	-04 00
29044 = Sect. C.	31045	31000	30960	30938 30866 30875 30900	
275	30936	30911	30851	30847 30774 30782 30807	
250	30794	30767	30707	30700 30645 30631 30656	-87 -17
225	30649	30624	30564	30552 30497 30481 30506	
200	30505	30480	30420	30405 30348 30330 30355	-49 -9.1
180	30385	30360	30300	30280 30200 30200 30225	
175	30265	30240	30180	30158 30176 30175 30200	-16 -15.1
160	30205	30180	30120	30190 30105 30100 30125	
145	30160	30135	30075	30138 30049 30060 30065	+09 -21.9
140	30145	30120	30060	30120 30030 30030 30045	
125	30208	30183	30123	30083 29993 29983 30008	+11 -17.0
120	30195	30170	30110	30070 29980 29970 29995	
100	30165	30140	30080	30060 29950 29940 29965	+11 -12.7
75	30076	30051	29991	29959 29873 29868 29897	
50	29986	29961	29901	29878 29797 29795 29820	+24 +13
25	29897	29872	29812	29797 29720 29723 29748	
0 = Sect. B. E.L. Maryland = Sect. A.	29807	29782	29722	29716 29603 29650 29675	
	29775	29750	29690	29700 29635 29650 29675	+01 00

KALMIA ST.

80' wide
14' walks



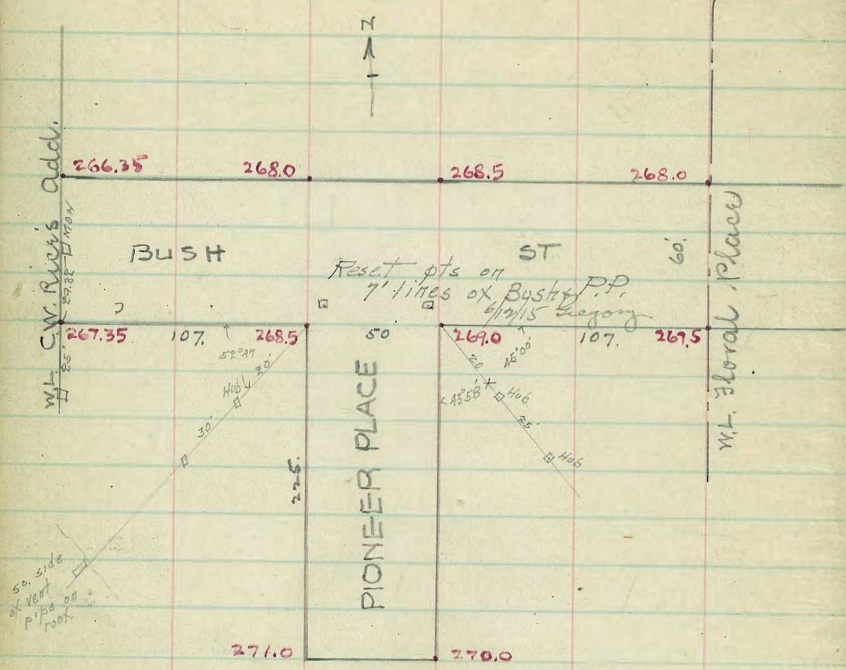
	N	E	S
200=WL 33rd	265.25	265.00	264.60
175	268.63	268.38	267.98
150	272.00	271.75	271.35
125	275.38	275.13	274.73
100	278.75	278.50	278.10
75	282.13	281.88	281.48
50	285.50	285.25	284.85
25	288.88	288.63	288.23
0 = E.L. Bancroft	292.25	292.00	291.60
E curb	292.00	291.95	291.95
E 1/4	292.10	291.80	292.28
Q	293.00	292.00	292.60
W 1/4	293.40	292.50	292.93
W curb	293.00	293.00	293.00
200=WL Bancroft	294.25	294.00	293.60
175	295.65	295.40	295.00
150	296.85	296.60	296.20
125	297.85	297.60	297.00
100	298.65	298.37	297.77
75	299.20	298.95	298.35
50	299.60	299.35	298.75
25	299.75	299.50	298.90
0 = E.L. 32nd	299.75	299.50	298.90

297.62 = Plug Curb SW 32d Kalmia

304.98	304.98	304.98	304.98	304.98	304.98	304.98	304.98	304.98	304.98
12.77	12.77	12.77	12.77	12.77	12.77	12.77	12.77	12.77	12.77
298.44	297.88	297.68	297.68	297.85	297.78	300.02	297.53	298.75	296.88
298.11	297.71	299.75	299.60	299.20	298.62	297.81	296.85	295.64	294.25
293.29	293.29	293.29	293.29	293.29	293.29	293.29	293.29	293.29	293.29
280.12	280.12	280.12	280.12	280.12	280.12	280.12	280.12	280.12	280.12
282.90	282.90	282.90	282.90	282.90	282.90	282.90	282.90	282.90	282.90
271.73	271.73	271.73	271.73	271.73	271.73	271.73	271.73	271.73	271.73
274.25	274.25	274.25	274.25	274.25	274.25	274.25	274.25	274.25	274.25
273.72	273.72	273.72	273.72	273.72	273.72	273.72	273.72	273.72	273.72
282.11	282.11	282.11	282.11	282.11	282.11	282.11	282.11	282.11	282.11
285.92	285.92	285.92	285.92	285.92	285.92	285.92	285.92	285.92	285.92
298.30	298.30	298.30	298.30	298.30	298.30	298.30	298.30	298.30	298.30
296.75	296.75	296.75	296.75	296.75	296.75	296.75	296.75	296.75	296.75
294.52	294.52	294.52	294.52	294.52	294.52	294.52	294.52	294.52	294.52
297.63	297.63	297.63	297.63	297.63	297.63	297.63	297.63	297.63	297.63
297.62	297.62	297.62	297.62	297.62	297.62	297.62	297.62	297.62	297.62

Cut A Fills 1/2 1/2 - West - Otter - Moore

BUSH ST. 60' wide
PIONEER PLACE 50' "



PIONEER PLACE

Book 910

	W		E				E
	¹⁰	^{7.5}	^{7.5}	^{7.5}	^{7.5}	¹⁰	
0=5L Bushy St.	268.75	268.50	268.23	268.75	268.40	269.00	269.25
25	269.03	268.78	268.47	268.94	268.56	269.11	269.36
50	269.31	269.06	268.71	269.14	268.72	269.27	269.47
75	269.58	269.33	268.95	269.33	268.88	269.33	269.58
100	269.86	269.61	269.19	269.53	269.04	269.44	269.69
125	270.14	269.89	269.44	269.72	269.21	269.56	269.81
150	270.42	270.17	269.68	269.92	269.37	269.67	269.92
175	270.69	270.44	269.92	270.11	269.53	269.78	270.03
200	270.97	270.72	270.16	270.31	269.69	269.89	270.14
225 = S. End	271.25	271.00	270.40	270.50	269.85	270.00	270.25

268.75	268.50	268.23	268.75	268.40	269.00	269.25
4.25	4.25	4.25	4.25	4.25	4.25	4.25
273.00	272.75	272.47	273.00	272.65	272.99	273.24

269.03	268.78	268.47	268.94	268.56	269.11	269.36
4.25	4.25	4.25	4.25	4.25	4.25	4.25
273.29	273.04	272.73	273.19	272.81	272.92	273.17

269.31	269.06	268.71	269.14	268.72	269.27	269.47
4.25	4.25	4.25	4.25	4.25	4.25	4.25
273.54	273.29	272.94	273.39	273.01	273.12	273.37

The grade on this street checks OK. The only thing I don't like is that the gutters are from 2 to 4 high. 5/4/5 Gregory.

27th STREET

60' wide
10' walks

Marcey

ave

65.5

65.5

62.0

62.0

Logan

ave

61.0

61.0

54.5

54.5

National

ave

53.5

53.5

27th

46.0

46.0

Newton

ave

45.0

45.0

35.0

35.0

Boston

ave

34.0

34.0

St.

22.5

22.5

Mairi

st.

MT Logan RR 62.01

NY National BP 54.56

SW Boston Spk 35.53

NE Newton BP 46.06

	W	£	£	£	£	£	£	£	£
140 = St. Marcey	65.75	65.50	65.10	65.50	65.10	65.50	65.10	65.50	65.75
100	64.75	64.50	64.10	64.50	64.10	64.50	64.10	64.50	64.75
50	63.50	63.25	62.85	63.25	62.85	63.25	62.85	63.25	63.50
0 = N. Logan	62.25	62.00	61.60	62.00	61.60	62.00	61.60	62.00	62.25
50	61.75	61.50	61.10	61.50	61.10	61.50	61.10	61.50	61.75
0 = St. Logan	61.25	61.00	60.60	61.00	60.60	61.00	60.60	61.00	61.25
50	60.17	59.97	59.57	59.97	59.57	59.97	59.57	59.97	60.17
100	59.08	58.83	58.43	58.83	58.43	58.83	58.43	58.83	59.08
150	58.00	57.75	57.35	57.75	57.35	57.75	57.35	57.75	58.00
200	56.97	56.77	56.37	56.77	56.37	56.77	56.37	56.77	56.97
250	55.83	55.58	55.18	55.58	55.18	55.58	55.18	55.58	55.83
300 = N. National	54.75	54.50	54.10	54.50	54.10	54.50	54.10	54.50	54.75
0 = St. National	53.75	53.50	53.10	53.50	53.10	53.50	53.10	53.50	53.75
50	52.50	52.25	51.85	52.25	51.85	52.25	51.85	52.25	52.50
100	51.25	51.00	50.60	51.00	50.60	51.00	50.60	51.00	51.25
150	50.00	49.75	49.35	49.75	49.35	49.75	49.35	49.75	50.00
200	48.75	48.50	48.10	48.50	48.10	48.50	48.10	48.50	48.75
250	47.50	47.25	46.85	47.25	46.85	47.25	46.85	47.25	47.50
300 = N. Newton	46.25	46.00	45.60	46.00	45.60	46.00	45.60	46.00	46.25

OK'd OK 10/6/15. Logans

English Bonds 1/24/15

9/15	9/15	9/15	9/15	9/15	9/15	9/15	9/15	9/15	9/15
66.34	66.34	66.34	66.34	66.34	66.34	66.34	66.34	66.34	66.34
67.50	67.50	67.50	67.50	67.50	67.50	67.50	67.50	67.50	67.50
68.75	68.75	68.75	68.75	68.75	68.75	68.75	68.75	68.75	68.75
70.00	70.00	70.00	70.00	70.00	70.00	70.00	70.00	70.00	70.00
71.25	71.25	71.25	71.25	71.25	71.25	71.25	71.25	71.25	71.25
72.50	72.50	72.50	72.50	72.50	72.50	72.50	72.50	72.50	72.50
73.75	73.75	73.75	73.75	73.75	73.75	73.75	73.75	73.75	73.75
75.00	75.00	75.00	75.00	75.00	75.00	75.00	75.00	75.00	75.00
76.25	76.25	76.25	76.25	76.25	76.25	76.25	76.25	76.25	76.25
77.50	77.50	77.50	77.50	77.50	77.50	77.50	77.50	77.50	77.50
78.75	78.75	78.75	78.75	78.75	78.75	78.75	78.75	78.75	78.75
80.00	80.00	80.00	80.00	80.00	80.00	80.00	80.00	80.00	80.00
81.25	81.25	81.25	81.25	81.25	81.25	81.25	81.25	81.25	81.25
82.50	82.50	82.50	82.50	82.50	82.50	82.50	82.50	82.50	82.50
83.75	83.75	83.75	83.75	83.75	83.75	83.75	83.75	83.75	83.75
85.00	85.00	85.00	85.00	85.00	85.00	85.00	85.00	85.00	85.00
86.25	86.25	86.25	86.25	86.25	86.25	86.25	86.25	86.25	86.25
87.50	87.50	87.50	87.50	87.50	87.50	87.50	87.50	87.50	87.50
88.75	88.75	88.75	88.75	88.75	88.75	88.75	88.75	88.75	88.75
90.00	90.00	90.00	90.00	90.00	90.00	90.00	90.00	90.00	90.00
91.25	91.25	91.25	91.25	91.25	91.25	91.25	91.25	91.25	91.25
92.50	92.50	92.50	92.50	92.50	92.50	92.50	92.50	92.50	92.50
93.75	93.75	93.75	93.75	93.75	93.75	93.75	93.75	93.75	93.75
95.00	95.00	95.00	95.00	95.00	95.00	95.00	95.00	95.00	95.00
96.25	96.25	96.25	96.25	96.25	96.25	96.25	96.25	96.25	96.25
97.50	97.50	97.50	97.50	97.50	97.50	97.50	97.50	97.50	97.50
98.75	98.75	98.75	98.75	98.75	98.75	98.75	98.75	98.75	98.75
100.00	100.00	100.00	100.00	100.00	100.00	100.00	100.00	100.00	100.00

	W		£				E
0=SL Newton	45.75	45.00	44.60	45.00	44.60	45.00	45.75
50	43.58	43.33	42.93	43.33	42.93	43.33	43.58
100	41.92	41.67	41.27	41.67	41.27	41.67	41.92
150	40.75	40.00	39.60	40.00	39.60	40.00	40.75
200	38.58	38.33	37.93	38.33	37.93	38.33	38.58
250	36.92	36.67	36.27	36.67	36.27	36.67	36.92
300=NL Boston	35.75	35.00	34.60	35.00	34.60	35.00	35.75
0=SL Boston	34.75	34.00	33.60	34.00	33.60	34.00	34.75
50	32.38	32.08	31.68	32.08	31.68	32.08	32.38
100	30.42	30.17	29.77	30.17	29.77	30.17	30.42
150	28.50	28.25	27.85	28.25	27.85	28.25	28.50
200	26.58	26.33	25.93	26.33	25.93	26.33	26.58
250	24.67	24.42	24.02	24.42	24.02	24.42	24.67
300=NL Main	22.75	22.50	22.10	22.50	22.10	22.50	22.75

4606 NE Newton	24.25	22.33	4.52	22.42	25.50	26.58	24.64	24.75
25.1	1.87	0.19	1.68	0.19	1.81	1.79	10.44	12.50
12.07	1.17	0.32	0.85	0.85	1.71	1.23	7.84	12.2
7.27	0.87	0.28	0.59	0.59	1.17	0.83	5.47	7.07
40.80	30.26	32.38	34.31	32.42	28.00	26.58	24.57	24.75
11.82	8.37	7.13	6.22	4.97	4.51	3.73	10.44	12.50
	2.12	1.82	1.52	1.32	1.2	1.03	11.44	12.50
	0.20	0.23	0.23	0.23	0.23	0.23	0.23	0.23

4606	45.58	42.57	41.22	40.20	38.28	36.72	35.25
45.58	1.23	0.90	0.76	0.63	0.50	0.44	11.23
42.57	1.23	0.90	0.76	0.63	0.50	0.44	10.2
41.22	1.23	0.90	0.76	0.63	0.50	0.44	10.2
40.20	1.23	0.90	0.76	0.63	0.50	0.44	10.2
38.28	1.23	0.90	0.76	0.63	0.50	0.44	10.2
36.72	1.23	0.90	0.76	0.63	0.50	0.44	10.2
35.25	1.23	0.90	0.76	0.63	0.50	0.44	10.2

OUTST. BILLS 2/11/15 Gregory Miller

4606	45.58	42.57	41.22	40.20	38.28	36.72	35.25
45.58	1.23	0.90	0.76	0.63	0.50	0.44	11.23
42.57	1.23	0.90	0.76	0.63	0.50	0.44	10.2
41.22	1.23	0.90	0.76	0.63	0.50	0.44	10.2
40.20	1.23	0.90	0.76	0.63	0.50	0.44	10.2
38.28	1.23	0.90	0.76	0.63	0.50	0.44	10.2
36.72	1.23	0.90	0.76	0.63	0.50	0.44	10.2
35.25	1.23	0.90	0.76	0.63	0.50	0.44	10.2

Chkd OK 10/6/15 Gregory Miller

	W	Curb	1/4	1/4	1/4	Curb	E
00 - Sh. Elm	218.25	218.00	217.60	218.00	217.60	218.00	218.25
	214.90	214.15	213.75	214.25	213.95	214.35	214.60
	213.78	213.53	213.10	213.65	213.37	213.77	214.07
50's	210.55	210.30	209.90	210.50	210.30	210.70	210.95
70's	207.25	207.55	207.15	207.78	207.60	208.00	208.25
	207.25	207.00	206.60	207.29	207.08	207.48	207.78
90's	205.60	205.35	205.12	205.68	205.30	205.90	206.15
	204.77	204.52	204.22	204.83	204.55	205.15	205.40
110's	203.95	203.70	203.48	204.05	203.90	204.40	204.65
	203.50	203.31	203.10	203.68	203.48	204.05	204.30
130's	202.85	202.80	202.67	203.26	203.05	203.40	203.65
	202.35	202.10	201.92	202.53	202.35	202.95	203.20
150's	202.45	202.20	202.03	202.65	202.50	203.10	203.35
	202.60	202.35	202.18	202.81	202.66	203.26	203.51
170's	203.05	202.80	202.64	203.28	203.15	203.75	204.00
	203.65	203.40	203.24	203.89	203.77	204.37	204.62
210's	204.25	204.00	203.85	204.50	204.40	205.00	205.25
	205.00	205.35	205.19	205.83	205.71	206.31	206.56
230's	206.05	205.80	205.64	206.28	206.15	206.75	207.00
250's	208.35	208.10	207.95	208.60	208.50	209.10	209.35

	E	W	W	E	E	E	E
221.05 HS	221.05	221.08	221.08	221.08	208.78	208.78	208.78
19.00	4.20	4.50	4.58	4.75	2.48	2.68	2.80
208.08 TP	216.88	209.28	214.50	209.33	206.10	202.70	200.48
0.70	218.25	210.85	218.25	210.85	207.80	206.60	202.95
208.78 HS	F1.37	F1.67	F1.75	F1.22	F1.70	F2.90	F3.17
13.02							
208.78 TP	208.78	202.39	202.39	202.39	202.39	202.39	202.39
0.50	11.30	11.46	11.51	12.09	6.32	7.37	7.51
202.58 HS	197.48	193.93	187.08	190.50	196.07	200.85	193.07
0.77	204.65	202.35	202.81	203.15	204.05	204.05	203.65
201.62 TP	F7.17	F8.42	F13.45	F12.75	F8.18	F5.20	F12.65
2.34							
213.96 HS	213.96	213.96	213.96	213.96	Cut & Fill stakes 10/4/11		
0.50	7.24	4.43	5.30	7.63	West - Otter - Moore		
213.96 TP	204.72	209.53	214.26	206.33			
1.20	205.81	207.00	209.35	208.35			
225.66 HS	F0.53	C2.53	C4.91	F2.02			
218.38 HS							
220.30	220.30	220.30	220.30	220.30	220.30	209.83	209.83
220.30	218.00	210.30	210.70	208.00	207.55	207.90	204.10
207.80 TP	2.20	2.50	10.00	9.60	12.30	12.75	4.45
2.03	2.05	2.05	7.05	7.25	12.05	12.50	4.22
209.83							
210.81 HS							
221.52	221.52	221.52	221.52	209.55	209.55	209.55	209.55
218.00	218.00	210.30	210.70	208.00	205.90	204.40	203.40
217.52 HS	3.52	3.52	11.22	10.82	1.55	3.65	5.15
2.72	3.27	3.27	10.97	10.57	1.30	3.40	4.90
208.80 TP							
209.55 HS							
209.55	209.55	209.55	209.55	209.55	209.55	209.55	209.55
202.95	203.10	206.75	205.00	206.75	207.55	205.35	203.70
6.60	6.45	5.80	4.55	2.80	2.00	4.20	5.85
6.35	6.20	5.55	4.30	2.95	1.75	3.95	5.00
209.55	209.15	209.55	209.55	209.55	209.55	209.15	209.15
202.95	202.95	202.95	202.95	202.95	202.95	202.95	202.95
6.95	7.45	7.35	6.75	5.55	3.75	4.45	1.20
6.70	7.20	7.10	6.50	5.30	3.50	4.20	
212.61	212.61	212.61	212.61	212.61	212.61	212.61	212.61
202.60	203.70	205.35	207.15	210.00	209.10	206.75	205.00
10.05	8.95	7.25	5.05	2.35	3.55	5.85	8.85
217.5 TP							
222.5 HS	212.61	212.61	212.61	212.61	212.61	222.5	222.5
3.21	202.95	203.40	204.40	205.90	208.00	210.70	218.00
217.80	9.25	9.25	8.45	6.75	4.65	1.95	4.55
216.48 HS	229.47	229.47	229.47	229.47	229.47	229.47	229.47
13.45	222.45	229.95	226.64	228.75	222.70	227.50	227.50
217.80 HS	6.95	4.34	2.13	2.84	4.37	2.77	1.94
6.21							
202.58 TP	222.58	222.58	222.58	222.58	222.58	222.58	222.58
3.81	221.45	221.45	220.50	229.97	228.40	226.90	224.85
212.58 HS	8.97	1.17	1.71	2.41	3.76	5.66	7.75
1.80							
202.58 TP	222.58	222.58	222.58	222.58	222.58	222.58	222.58
1.71	1.94	2.61	3.61	4.71	6.64	8.71	11.10
210.17	210.17	210.17	210.17	210.17	210.17	210.17	210.17
0.61	207.00	205.75	209.00	203.25	203.20	202.75	202.45
210.17 HS	3.75	4.92	6.77	6.82	6.77	7.20	7.22
12.47							
209.93 TP	210.17	210.17	210.17	210.17	210.17	210.17	210.17
12.47	208.25	204.25	203.05	202.85	202.85	202.11	202.10
222.40 HS	1.82	4.12	5.92	7.12	7.92	7.52	8.67
12.47							
219.31 HS	1.67	2.07	2.50				
6.00	2.37		4.20				

West - Otter - Moore

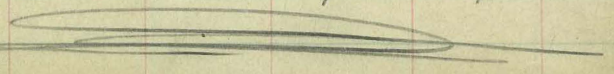
EDGEMONT STREET
INTERSECTION WITH ELM ST. 60' ST.

	W	Curb	1/4	+	1/4	Curb	E
SLELM	218.25	218.00	217.60	218.00	217.60	218.00	218.25
S Curb	218.00	218.00	217.93	218.33	217.93	218.00	218.00
S 1/4	218.10	217.50	218.26	218.66	218.26	217.50	218.10
Center	219.00	218.00	218.60	219.00	218.60	218.00	219.00
N 1/4	219.40	218.50	218.93	219.33	218.93	218.50	219.40
N Curb	219.00	219.00				219.00	219.00
NL ELM	220.25	220.00	219.60	220.00	219.60	220.00	220.25

ELM TO FIR

NL of ELM	220.25	220.00	219.60	220.00	219.60	220.00	220.25
25' N of ELM	224.00	223.75	223.88	223.81	223.94	223.87	224.12
50' " "	227.75	227.50	227.16	227.60	227.28	227.74	227.99
75' " "	231.50	231.25	230.94	231.43	231.12	231.62	231.87
100' " "	235.25	235.00	234.71	235.24	234.96	235.49	235.74
125' " "	239.00	238.75	238.50	239.05	238.76	239.36	239.61
150' " "	242.75	242.50	242.28	242.86	242.58	243.23	243.48
175' " "	246.50	246.25	246.06	246.67	246.50	247.10	247.35
200' " "	249.60	249.35	249.10	249.85	249.75	250.35	250.60
225' " "	251.35	251.10	250.98	251.67	251.65	252.25	252.50
250' " "	252.48	252.23	252.14	252.86	252.90	253.50	253.75
275' " "	253.61	253.36	253.31	254.06	254.15	254.75	255.00
300' N = SL FIR	254.75	254.50	254.47	255.25	255.40	256.00	256.25

Hold Over Your Head



	W	Curb	1/4	+	1/4	Curb	E
267.87-H9	267.87	267.87	267.87	267.87	267.87	267.87	267.87
268.07-H9	268.07	267.87	267.87	267.87	267.87	267.87	267.87
268.27-H9	268.27	268.07	268.07	268.07	268.07	268.07	268.07
268.47-H9	268.47	268.27	268.27	268.27	268.27	268.27	268.27
268.67-H9	268.67	268.47	268.47	268.47	268.47	268.47	268.47
268.87-H9	268.87	268.67	268.67	268.67	268.67	268.67	268.67
269.07-H9	269.07	268.87	268.87	268.87	268.87	268.87	268.87
269.27-H9	269.27	269.07	269.07	269.07	269.07	269.07	269.07
269.47-H9	269.47	269.27	269.27	269.27	269.27	269.27	269.27
269.67-H9	269.67	269.47	269.47	269.47	269.47	269.47	269.47
269.87-H9	269.87	269.67	269.67	269.67	269.67	269.67	269.67
270.07-H9	270.07	269.87	269.87	269.87	269.87	269.87	269.87
270.27-H9	270.27	270.07	270.07	270.07	270.07	270.07	270.07
270.47-H9	270.47	270.27	270.27	270.27	270.27	270.27	270.27
270.67-H9	270.67	270.47	270.47	270.47	270.47	270.47	270.47
270.87-H9	270.87	270.67	270.67	270.67	270.67	270.67	270.67
271.07-H9	271.07	270.87	270.87	270.87	270.87	270.87	270.87
271.27-H9	271.27	271.07	271.07	271.07	271.07	271.07	271.07
271.47-H9	271.47	271.27	271.27	271.27	271.27	271.27	271.27
271.67-H9	271.67	271.47	271.47	271.47	271.47	271.47	271.47
271.87-H9	271.87	271.67	271.67	271.67	271.67	271.67	271.67
272.07-H9	272.07	271.87	271.87	271.87	271.87	271.87	271.87
272.27-H9	272.27	272.07	272.07	272.07	272.07	272.07	272.07
272.47-H9	272.47	272.27	272.27	272.27	272.27	272.27	272.27
272.67-H9	272.67	272.47	272.47	272.47	272.47	272.47	272.47
272.87-H9	272.87	272.67	272.67	272.67	272.67	272.67	272.67
273.07-H9	273.07	272.87	272.87	272.87	272.87	272.87	272.87
273.27-H9	273.27	273.07	273.07	273.07	273.07	273.07	273.07
273.47-H9	273.47	273.27	273.27	273.27	273.27	273.27	273.27
273.67-H9	273.67	273.47	273.47	273.47	273.47	273.47	273.47
273.87-H9	273.87	273.67	273.67	273.67	273.67	273.67	273.67
274.07-H9	274.07	273.87	273.87	273.87	273.87	273.87	273.87
274.27-H9	274.27	274.07	274.07	274.07	274.07	274.07	274.07
274.47-H9	274.47	274.27	274.27	274.27	274.27	274.27	274.27
274.67-H9	274.67	274.47	274.47	274.47	274.47	274.47	274.47
274.87-H9	274.87	274.67	274.67	274.67	274.67	274.67	274.67
275.07-H9	275.07	274.87	274.87	274.87	274.87	274.87	274.87
275.27-H9	275.27	275.07	275.07	275.07	275.07	275.07	275.07
275.47-H9	275.47	275.27	275.27	275.27	275.27	275.27	275.27
275.67-H9	275.67	275.47	275.47	275.47	275.47	275.47	275.47
275.87-H9	275.87	275.67	275.67	275.67	275.67	275.67	275.67
276.07-H9	276.07	275.87	275.87	275.87	275.87	275.87	275.87
276.27-H9	276.27	276.07	276.07	276.07	276.07	276.07	276.07
276.47-H9	276.47	276.27	276.27	276.27	276.27	276.27	276.27
276.67-H9	276.67	276.47	276.47	276.47	276.47	276.47	276.47
276.87-H9	276.87	276.67	276.67	276.67	276.67	276.67	276.67
277.07-H9	277.07	276.87	276.87	276.87	276.87	276.87	276.87
277.27-H9	277.27	277.07	277.07	277.07	277.07	277.07	277.07
277.47-H9	277.47	277.27	277.27	277.27	277.27	277.27	277.27
277.67-H9	277.67	277.47	277.47	277.47	277.47	277.47	277.47
277.87-H9	277.87	277.67	277.67	277.67	277.67	277.67	277.67
278.07-H9	278.07	277.87	277.87	277.87	277.87	277.87	277.87
278.27-H9	278.27	278.07	278.07	278.07	278.07	278.07	278.07
278.47-H9	278.47	278.27	278.27	278.27	278.27	278.27	278.27
278.67-H9	278.67	278.47	278.47	278.47	278.47	278.47	278.47
278.87-H9	278.87	278.67	278.67	278.67	278.67	278.67	278.67
279.07-H9	279.07	278.87	278.87	278.87	278.87	278.87	278.87
279.27-H9	279.27	279.07	279.07	279.07	279.07	279.07	279.07
279.47-H9	279.47	279.27	279.27	279.27	279.27	279.27	279.27
279.67-H9	279.67	279.47	279.47	279.47	279.47	279.47	279.47
279.87-H9	279.87	279.67	279.67	279.67	279.67	279.67	279.67
280.07-H9	280.07	279.87	279.87	279.87	279.87	279.87	279.87
280.27-H9	280.27	280.07	280.07	280.07	280.07	280.07	280.07
280.47-H9	280.47	280.27	280.27	280.27	280.27	280.27	280.27
280.67-H9	280.67	280.47	280.47	280.47	280.47	280.47	280.47
280.87-H9	280.87	280.67	280.67	280.67	280.67	280.67	280.67
281.07-H9	281.07	280.87	280.87	280.87	280.87	280.87	280.87
281.27-H9	281.27	281.07	281.07	281.07	281.07	281.07	281.07
281.47-H9	281.47	281.27	281.27	281.27	281.27	281.27	281.27
281.67-H9	281.67	281.47	281.47	281.47	281.47	281.47	281.47
281.87-H9	281.87	281.67	281.67	281.67	281.67	281.67	281.67
282.07-H9	282.07	281.87	281.87	281.87	281.87	281.87	281.87
282.27-H9	282.27	282.07	282.07	282.07	282.07	282.07	282.07
282.47-H9	282.47	282.27	282.27	282.27	282.27	282.27	282.27
282.67-H9	282.67	282.47	282.47	282.47	282.47	282.47	282.47
282.87-H9	282.87	282.67	282.67	282.67	282.67	282.67	282.67
283.07-H9	283.07	282.87	282.87	282.87	282.87	282.87	282.87
283.27-H9	283.27	283.07	283.07	283.07	283.07	283.07	283.07
283.47-H9	283.47	283.27	283.27	283.27	283.27	283.27	283.27
283.67-H9	283.67	283.47	283.47	283.47	283.47	283.47	283.47
283.87-H9	283.87	283.67	283.67	283.67	283.67	283.67	283.67
284.07-H9	284.07	283.87	283.87	283.87	283.87	283.87	283.87
284.27-H9	284.27	284.07	284.07	284.07	284.07	284.07	284.07
284.47-H9	284.47	284.27	284.27	284.27	284.27	284.27	284.27
284.67-H9	284.67	284.47	284.47	284.47	284.47	284.47	284.47
284.87-H9	284.87	284.67	284.67	284.67	284.67	284.67	284.67
285.07-H9	285.07	284.87	284.87	284.87	284.87	284.87	284.87
285.27-H9	285.27	285.07	285.07	285.07	285.07	285.07	285.07
285.47-H9	285.47	285.27	285.27	285.27	285.27	285.27	285.27
285.67-H9	285.67	285.47	285.47	285.47	285.47	285.47	285.47
285.87-H9	285.87	285.67	285.67	285.67	285.67	285.67	285.67
286.07-H9	286.07	285.87	285.87	285.87	285.87	285.87	285.87
286.27-H9	286.27	286.07	286.07	286.07	286.07	286.07	286.07
286.47-H9	286.47	286.27	286.27				

EDGEMONT STREET

FIR INTERSECTION

W Curb 1/4 E 1/4 Curb E

Table with 8 columns of elevation data for S.L. FIR, S. Curb, S/4, Center, N 1/4, N. Curb, and N.L. FIR.

FIR TO GRAPE

Table with 8 columns of elevation data for N.L. FIR and various distances (25' N., 50', 75', 100', 125', 150', 175', 200', 225', 250', 275', 300', 325', 350').

S.L. GRAPE

365.14 North

Hold Over Your Head

276.71 - P.M. 31, 32 & Grape Plug.

Table with 10 columns of elevation data and notes including 'Cut & Fills - 10/14/15. West Otter-Moore.'

277.71 - B.M. Top of Hyd. 25' Edge of Edgemo... W.

Table with 10 columns of elevation data.

Table with 10 columns of elevation data.

Curb gr. stakes. # 11/20/15 West Otter-Moore.

Table with 10 columns of elevation data.

Table with 10 columns of elevation data.

Table with 10 columns of elevation data.

Table with 10 columns of elevation data.

Table with 10 columns of elevation data.

Table with 10 columns of elevation data.

Table with 10 columns of elevation data.

Table with 10 columns of elevation data.

Table with 10 columns of elevation data.

Table with 10 columns of elevation data.

Table with 10 columns of elevation data.

Table with 10 columns of elevation data.

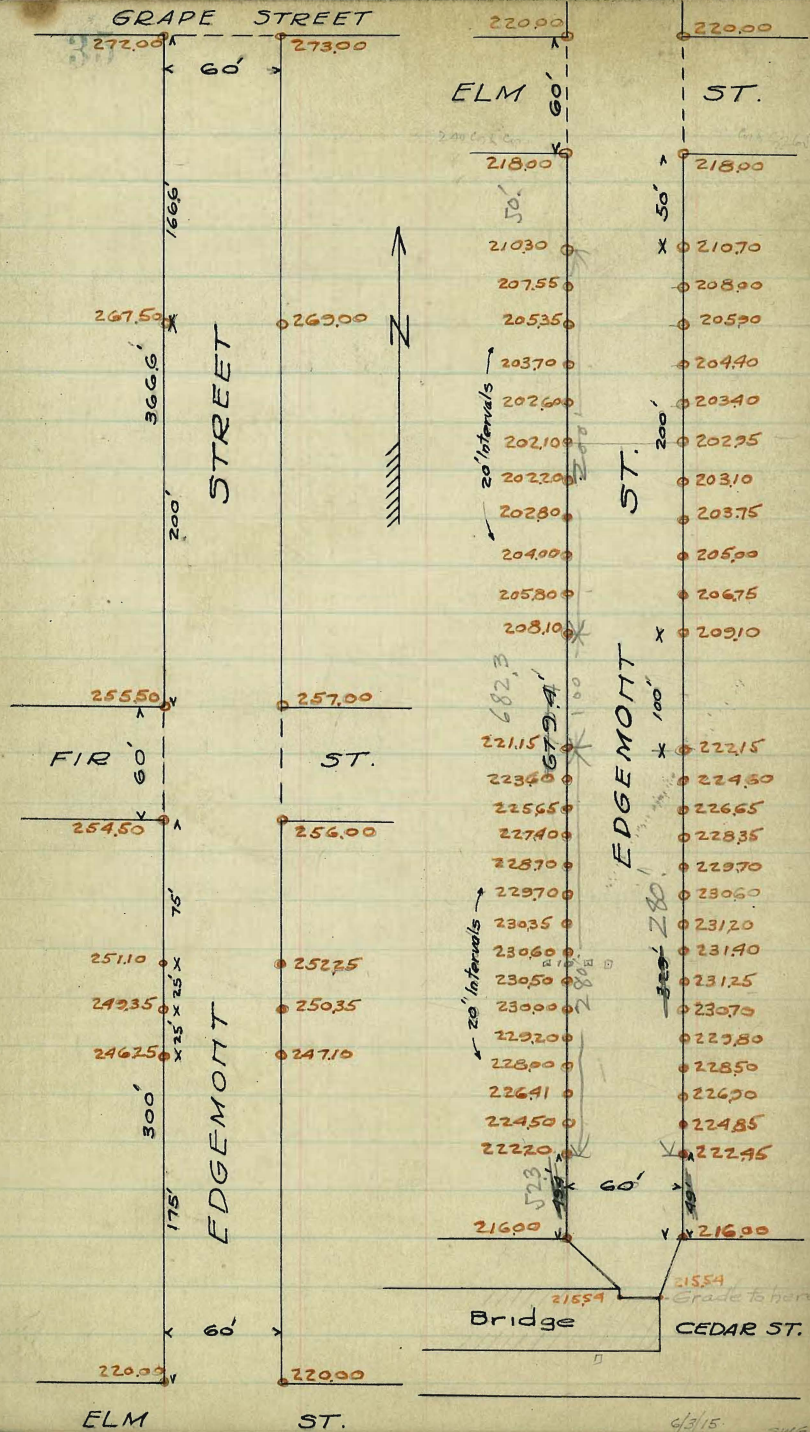
Table with 10 columns of elevation data.

Table with 10 columns of elevation data.

Table with 10 columns of elevation data.

Table with 10 columns of elevation data.

Table with 10 columns of elevation data.



#1 Cedar & Edgemont - Full Bridge - 215.923
 " Grape " " " SW - 213.245
 32 " Plug 216.955

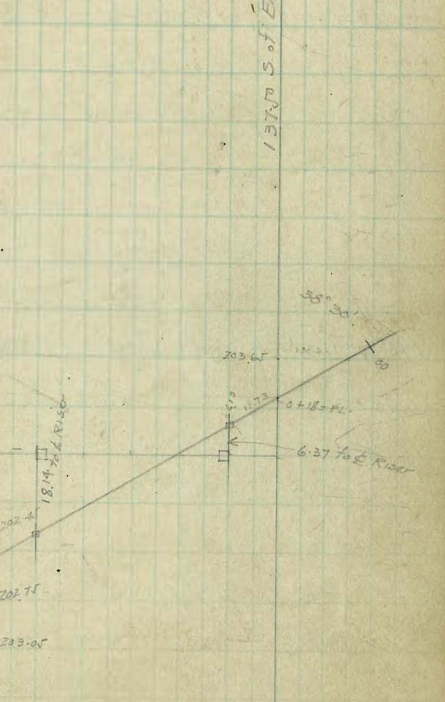
35
 Culvert 24" dia
 10/14/15
 West of Cedar House

219.24	BM. 60' E of 13' FT Elm.
225.73 H3	196.12
228.43	6.50
208.33 TP	197.62 = Ground
0.34	12.00
208.34 H3	193.62 = Top wall
15.27	203.67 = Grade
195.75 TP	10.03
2.57	5.02
178.12 H3	15.05
6.43	1.17
171.64 TP	10.635
3.72	1.50
197.36 H3	15.05
	17.608 = to slope
	18.0 for safety = to data and pipe
	32.9

198.12
10.22
187.90 = Ground
2
187.90 = Top wall
203.75 = Gr
12.85
6.42
19.27
1.17
13.489
19.27
19.27
22.5459 = toe slope
23.63 for safety

187.90 = 7.19
 175.67
 4.75
 19.092 M.H.
 202.7
 11.78 Rise
 Green
 M.H. - 128' S. 750'
 Elm & 16' W. of
 El. Edgemont.

HT	El.	Gr.	Cuts
00	197.36	574 194.62	191.50 0.12
+18		480 192.56	190.92 0.164
+29.73 = curb	458	190.78	190.55 0.23
+50	782	189.54	189.94 0.36
+74.64 = curb	836	189.00	189.05 0.05
+88.01	856	188.80	188.68 0.12
1400			
1412 = End Pipe	9.43	187.93	187.93 0.00



191.69
 5.50
 197.14
 5.09
 192.05
 199.10
 7.06

197.14
 6.14
 191.00
 197.14
 8.95 to But CB on East

6 to put CB on West

Culvert takes 12 ft 14" Pipe
 Rivers & Connections = 38 ft - 10"

215.72	BM. Cedar	215.54	215.54
4.63		205.27	207.75
220.55	H3	10.27	8.09
13.10			
207.45	TP		
2.57			
210.02	H3		
4.75			
205.27			

	W	Curb	1/4	+	1/4	Curb	E
SL El Cajon	36460	36420	36440		36380	36420	
50' So.		36502				36462	
100' "		36543				36503	
Alley		36576					
H 26 So = TL of		36578				36538	
Alley							
1626 " = SL of	36622	36597	36600	36600			
1876 So.		36615				36575	
2376 "		36657				36617	
2876 " of Howard		36698				36658	
3376 So. = TL		36740				36700	

Start here
at 1029

Howard St. Intersection - 80' St.

TL of Howard	36765	36740	36790	36720	36690	36700	36725
TL Curb		36740					36700
TL 1/4		36700					36660
Center		36740					36700
3/4		36700					36660
S. Curb		36740					36700
SL of Howard	36765	36740	36790	36720	36690	36700	36725

Note: Change of grade on this job is from Howard Avenue to Lincoln Avenue only.

36770	36765	36733	36687	36640	36603	36568	36527	36485
36770	36765	36733	36687	36640	36603	36568	36527	36485
36770	36765	36733	36687	36640	36603	36568	36527	36485

36770	36765	36733	36687	36640	36603	36568	36527	36485
36770	36765	36733	36687	36640	36603	36568	36527	36485

Cement Curb Slopes 3' from N. Side 1/4" Moore
Gregory Moore

36560 = BM 460	371.73	371.73	371.73		Set end 4.8 to sub-gr. & Raked in, check every foot			
615	364.20	364.40	363.80					
371.73 H3	7.53	7.33	7.93		9 1/2' West - Open - Moore (492) (494) (524)			
	7.78	7.58	8.18					
36560 BM	371.39	371.39	371.39	371.39	371.39	371.39	371.39	371.39
5.79	364.20	364.20	363.80	364.20	367.00	367.00	366.60	367.00
371.39 H3	6.79	7.19	6.99	7.59	7.19	8.99	4.09	4.99
	2.4	2.4	2.4	2.4	2.4	2.4	2.4	2.4
	371.39	371.39	371.39	371.39	371.39	371.39	371.39	371.39
	364.60	367.00	366.60	367.00	367.00	367.00	367.00	367.00
	4.79	4.29	4.79	4.29	4.79	4.29	4.79	4.29

(42) (52) (512) (512) (472)

80 ST.
14' Walks
13' Quarters

30th STREET

	W	curb	1/4	1/2	3/4	Curb	E
J.L. Howard	367.65	367.40	367.00	367.20	366.60	367.00	367.25
50' 50.	367.36	367.11	366.71	366.90	366.30	366.70	366.93
100'	367.08	366.83	366.43	366.62	366.01	366.41	366.66
150'	366.80	366.55	366.15	366.33	365.72	366.12	366.37
200'	366.51	366.26	365.86	366.04	365.43	365.83	366.08
250'	366.23	365.98	365.58	365.76	365.14	365.54	365.79
300'	365.95	365.70	365.30	365.47	364.85	365.25	365.50
350'	365.67	365.42	365.02	365.18	364.55	364.95	365.20
400'	365.38	365.13	364.73	364.89	364.26	364.66	364.91
450'	365.10	364.85	364.45	364.61	363.97	364.37	364.62
500'	364.82	364.57	364.17	364.32	363.68	364.08	364.33
550'	364.53	364.28	363.88	364.03	363.39	363.79	364.04
600' S = H.L. Polk	364.25	364.00	363.60	363.75	363.10	363.50	363.75

POLK AVE. INTERSECTION - 80' ST.

H.L. Polk	364.25	364.00	363.60	363.75	363.10	363.50	363.75
H. Curb	364.00	363.50	363.51	363.66	363.01	363.50	363.50
H 1/4	363.60	362.87	363.43	363.58	362.93	362.37	363.10
Center	363.75	362.75	363.35	363.50	362.85	362.25	363.25
S 1/4	363.10	362.50	363.27	363.42	362.77	362.17	362.60
S Curb	362.50	362.50	363.19	363.34	362.69	362.00	363.00
J.L. Polk	363.75	363.50	363.10	363.25	362.60	363.00	363.25

365.13	364.95	364.57	364.17	363.75	363.33	362.91	362.50	362.08	361.67	361.25	360.83	360.42	360.00
365.14	364.96	364.58	364.18	363.76	363.34	362.92	362.51	362.09	361.67	361.25	360.84	360.42	360.00
365.15	364.97	364.59	364.19	363.77	363.35	362.93	362.52	362.10	361.68	361.26	360.85	360.43	360.01

OUTSIDE CURB 1/4 H.L. Gregory Moore Millar

365.16	364.98	364.60	364.20	363.78	363.36	362.94	362.53	362.11	361.70	361.28	360.86	360.44	360.02
365.17	364.99	364.61	364.21	363.79	363.37	362.95	362.54	362.12	361.71	361.29	360.87	360.45	360.03

Demarc Curb Stakes 3' from C.C. Line for J.L. Gregory Moore M.

365.18	364.99	364.61	364.21	363.79	363.37	362.95	362.54	362.12	361.71	361.29	360.87	360.45	360.03
365.19	365.00	364.62	364.22	363.80	363.38	362.96	362.55	362.13	361.72	361.30	360.88	360.46	360.04
365.20	365.01	364.63	364.23	363.81	363.39	362.97	362.56	362.14	361.73	361.31	360.89	360.47	360.05

Lead 1/2 to grade & set every 100' by raking. 7 1/2 S West - Otter - Moore. (512) (513) (514)

368.71	368.71	368.71	368.71	368.71	368.71	368.71	368.71
368.71	368.71	368.71	368.71	368.71	368.71	368.71	368.71
5.61	5.76	6.11	5.77	5.96	5.61	5.61	
(512)	(514)	(521)	(518)	(527)			

30th STREET

	W. Curb	1/4	1/2	3/4	Curb E
SL Lincoln	361.00	360.40	360.75	360.23	360.50
50' So.		360.58			360.13
100' "		360.17			359.75
150' "		359.75			359.37
200'		359.34			359.00
250'		358.92			358.62
300'		358.50			358.25
350'		358.09			357.87
400'		357.67			357.50
450'		357.25			357.13
500'		356.83			356.75
550' of University		356.42			356.37
600 So. = I.L.	356.00	355.60	356.00	355.60	356.00

B.P. 511.30" + Univ 355.01
Tie hub 70' W at line, 362.62

355.01	356.00	357.00	358.00	359.00	360.00	361.00	362.00	363.00	364.00	365.00
356.00	357.00	358.00	359.00	360.00	361.00	362.00	363.00	364.00	365.00	366.00

355.01	356.00	357.00	358.00	359.00	360.00	361.00	362.00	363.00	364.00	365.00
356.00	357.00	358.00	359.00	360.00	361.00	362.00	363.00	364.00	365.00	366.00

355.01 B.M.	360.84	360.84	360.84	365.90	365.90	365.90	365.90	365.90	365.90	365.90
360.84 M	5.24	4.84	5.24	5.50	5.15	5.67	5.18	4.65	5.00	5.00

362.62 B.M. set ends - Raked 1/4's
drove to Sub Gr.
9/10/15 West-Otter Moore

355.01 B.M.	361.40	361.40	361.40	361.40	361.40	366.12	366.12	366.12	366.12	366.12
361.40	5.20	5.80	5.40	5.90	5.40	5.12	5.72	5.37	5.89	5.62

362.62 B.M. set ends - Raked for check
4/15/16 West-Otter Moore

6/25/15
BRL

POLK

AVE.

EL CAJON AVE.

363.50

363.90

364.90

364.20

220'

362.77
362.70
362.63
362.57
362.50
362.43
362.37
362.30
362.23
362.17
362.10

20' Intervals

STREET

600'

362.27
362.20
362.13
362.07
362.00
361.93
361.87
361.80
361.73
361.67
361.60

N

20' ALLEY

175'

ST.

ALLEY

367.40

367.00

HOWARD

367.40

367.00

361.50

361.00

LINCOLN

AVE.

361.00

360.50

600'

30TH

600'

30TH

364.00

363.50

POLK

363.50

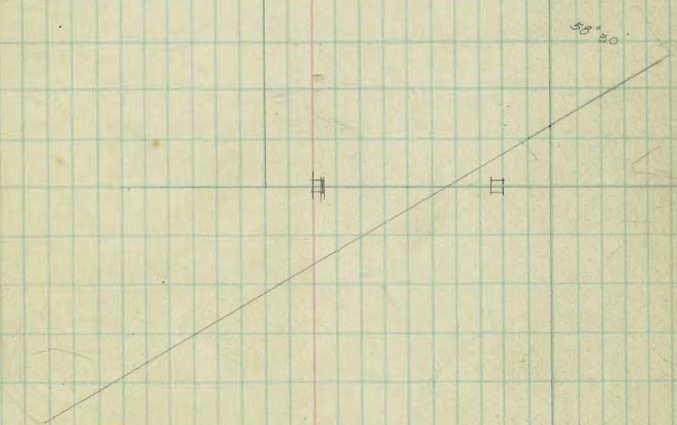
363.00

AVE.

356.90

356.90

UNIVERSITY AVENUE



ARCTIC STREET

	E	Curb	1/4	1/2	3/4	Curb	W
PL MEKKE	9025	9000	8990	8950	8885	8900	8925
25' P.O.	9081	9056	8996	9002	8935	8948	8973
50' "	9138	9113	9053	9055	8986	8997	9022
75'	9194	9169	9109	9107	9036	9045	9070
100'	9251	9226	9166	9160	9087	9094	9119
125'	9307	9282	9222	9212	9137	9142	9167
150'	9364	9339	9279	9264	9187	9190	9215
175'	9420	9395	9335	9317	9238	9239	9264
200'	9477	9452	9392	9369	9288	9287	9312
225'	9533	9508	9448	9422	9339	9336	9361
250'	9590	9565	9505	9474	9389	9384	9409
275'	9646	9621	9561	9526	9439	9432	9457
310' P. = SL of	9725	9700	9640	9600	9510	9500	9525

✓
 N

702
 91.85 Elexo & Merfinc
 892 " " Arctic
 98.89 = hub ctr Healy & McNeely

98.87	9025	9158	9251	9304	9417	9577	9500	9725	10159
	912	78	636	628	610	552	564	454	350
	112	78	112	78	65	78.7	25	15	98.09
	172	78	112	78	65	78.7	25	15	
	9025	9119	9212	9212	9312	9409	9505		
	1025	925	112	107	107	112	112		
	1025	-11	-4.0	-4.0	-3.5	-3.5	-3.5		

95.57 = H3	95.57	95.57	95.57	95.57	95.57	95.57	95.57	95.57	95.57	95.57	95.57	95.57	95.57	95.57
75.52 TP	89.00	9000	9113	9224	9337	9452	9577	9694	9810	9927	10044	10161	10278	10395
88.8	6.24V	5.57V	4.46V	3.33V	2.20V	1.07V	5.62V	4.45V	3.69V	2.72V	1.75V			
102.25 H3	6.24V	5.57V	4.46V	3.33V	2.20V	1.07V	5.62V	4.45V	3.69V	2.72V	1.75V			

78.07 = E Hub	102.65	102.65	102.65	102.65
Arctic & Healy	95.00	97.00	99.65	94.52
	7.65V	5.65V	7.00V	8.13V
	7.40V	5.40V	6.75V	7.88V

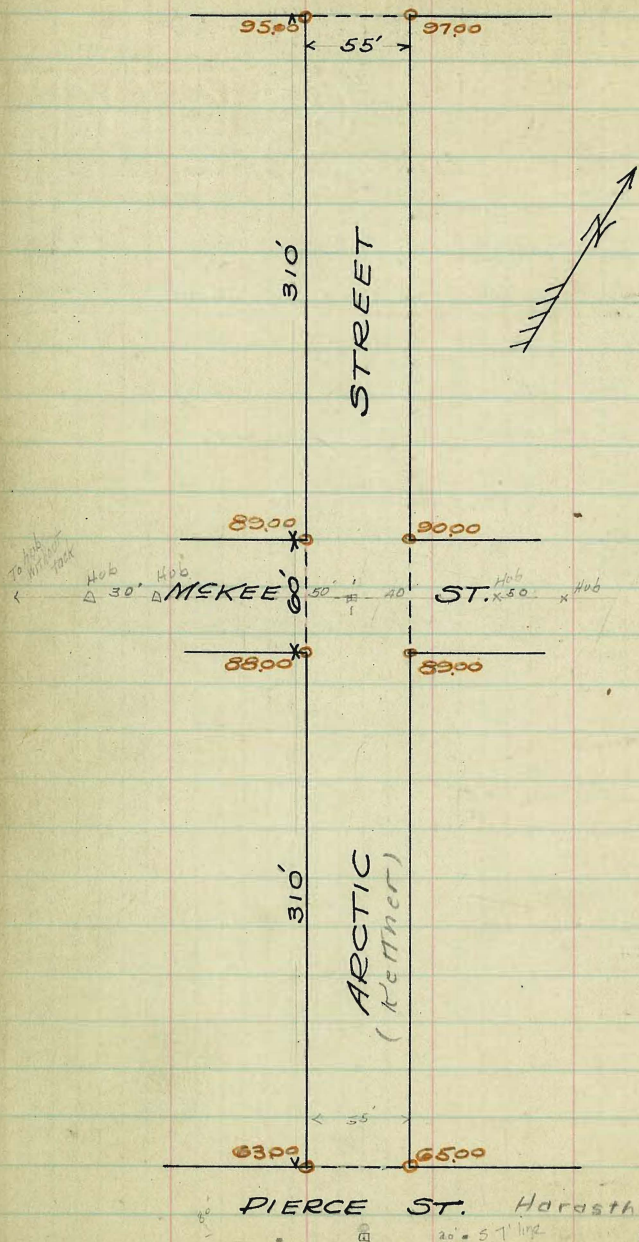
Finish stakes - Properties & Curbs - West - Otter - Moore.

98.07 = BM & McNeely & Arctic.

82.1	106.35	106.35	106.35	106.35	106.35
106.33 H3	97.00	96.40	96.00	95.70	95.00
	9.81V	9.95V	10.25V	11.25V	11.35V
	9.10V			11.10V	
	(4.75)	(4.25)	(5.00)	(5.07)	(4.26)
				(5.00)	

ARCTIC STREET

MCNEALEY ST. Pringle



60' ST
10' Marks
10' Quarters

LARK STREET

	W	Curb	1/4	1/2	3/4	Curb	E
SL. FORT STOCKTON	27225	27200	27185	27250	27240	27300	27325
50' So.	27287	27262	27247	27312	27302	27362	27387
80'	27300	27275	27260	27325	27315	27375	27400
75'	27315	27290	27275	27340	27330	27390	27415
100'	27325	27300	27285	27350	27340	27400	27425
110'	27324	27309	27294	27356	27344	27404	27429
125'	27370	27345	27330	27351	27347	27407	27432
135'	27343	27318	27303	27360	27348	27403	27428
150'	27345	27320	27305	27360	27340	27400	27425
160'	27334	27309	27288	27348	27327	27387	27412
175'	27326	27301	27280	27340	27319	27379	27404
185'	27318	27293	27278	27324	27295	27355	27380
200'	27313	27288	27261	27314	27279	27339	27364
210'	27292	27267	27257	27289	27270	27310	27335
225'	27278	27253	27233	27272	27250	27290	27315
235'	27250	27225	27218	27237	27210	27250	27275
250'	27232	27207	27187	27216	27184	27224	27249
260'	27198	27173	27153	27174	27135	27175	27200
285'	27175	27150	27110	27146	27104	27142	27167
289'	27113	27088	27048	27070	27013	27053	27078
297'	27103	27078	27038	27058	26999	27039	27064
WASHINGTON	27083	27058	27018	27035	27011	27011	27036
300' So. = H.L. of	27075	27050	26990	27025	26982	27000	27025

(WASHINGTON ST. INTERSECTION EXCEPTED)

SL. WASHINGTON	27075	27050	26990	27025	26972	27000	27025
50' So.	26933	26908	26848	26879	26824	26850	26875
100' "	26792	26767	26707	26733	26676	26700	26725
150'	26650	26625	26565	26587	26528	26550	26575
200'	26509	26484	26424	26442	26381	26400	26425
250'	26367	26342	26282	26296	26233	26250	26275
300' S. = H.L. DOUGLAS	26225	26200	26140	26150	26085	26100	26125

Book 951

44

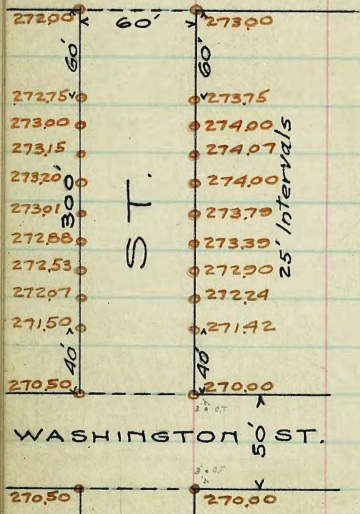
" 9

BM 27302	27137	27144	27151	27157	27164	27171	27178	27185	27192	27199	27206	27213	27220	27227	27234	27241	27248	27255	27262	27269	27276	27283	27290	27297	27304	27311	27318	27325	27332	27339	27346	27353	27360	27367	27374	27381	27388	27395	27402	27409	27416	27423	27430	27437	27444	27451	27458	27465	27472	27479	27486	27493	27500	27507	27514	27521	27528	27535	27542	27549	27556	27563	27570	27577	27584	27591	27598	27605	27612	27619	27626	27633	27640	27647	27654	27661	27668	27675	27682	27689	27696	27703	27710	27717	27724	27731	27738	27745	27752	27759	27766	27773	27780	27787	27794	27801	27808	27815	27822	27829	27836	27843	27850	27857	27864	27871	27878	27885	27892	27899	27906	27913	27920	27927	27934	27941	27948	27955	27962	27969	27976	27983	27990	27997	28004	28011	28018	28025	28032	28039	28046	28053	28060	28067	28074	28081	28088	28095	28102	28109	28116	28123	28130	28137	28144	28151	28158	28165	28172	28179	28186	28193	28200	28207	28214	28221	28228	28235	28242	28249	28256	28263	28270	28277	28284	28291	28298	28305	28312	28319	28326	28333	28340	28347	28354	28361	28368	28375	28382	28389	28396	28403	28410	28417	28424	28431	28438	28445	28452	28459	28466	28473	28480	28487	28494	28501	28508	28515	28522	28529	28536	28543	28550	28557	28564	28571	28578	28585	28592	28599	28606	28613	28620	28627	28634	28641	28648	28655	28662	28669	28676	28683	28690	28697	28704	28711	28718	28725	28732	28739	28746	28753	28760	28767	28774	28781	28788	28795	28802	28809	28816	28823	28830	28837	28844	28851	28858	28865	28872	28879	28886	28893	28900	28907	28914	28921	28928	28935	28942	28949	28956	28963	28970	28977	28984	28991	28998	29005	29012	29019	29026	29033	29040	29047	29054	29061	29068	29075	29082	29089	29096	29103	29110	29117	29124	29131	29138	29145	29152	29159	29166	29173	29180	29187	29194	29201	29208	29215	29222	29229	29236	29243	29250	29257	29264	29271	29278	29285	29292	29299	29306	29313	29320	29327	29334	29341	29348	29355	29362	29369	29376	29383	29390	29397	29404	29411	29418	29425	29432	29439	29446	29453	29460	29467	29474	29481	29488	29495	29502	29509	29516	29523	29530	29537	29544	29551	29558	29565	29572	29579	29586	29593	29600	29607	29614	29621	29628	29635	29642	29649	29656	29663	29670	29677	29684	29691	29698	29705	29712	29719	29726	29733	29740	29747	29754	29761	29768	29775	29782	29789	29796	29803	29810	29817	29824	29831	29838	29845	29852	29859	29866	29873	29880	29887	29894	29901	29908	29915	29922	29929	29936	29943	29950	29957	29964	29971	29978	29985	29992	29999
----------	-------	-------	-------	-------	-------	-------	-------	-------	-------	-------	-------	-------	-------	-------	-------	-------	-------	-------	-------	-------	-------	-------	-------	-------	-------	-------	-------	-------	-------	-------	-------	-------	-------	-------	-------	-------	-------	-------	-------	-------	-------	-------	-------	-------	-------	-------	-------	-------	-------	-------	-------	-------	-------	-------	-------	-------	-------	-------	-------	-------	-------	-------	-------	-------	-------	-------	-------	-------	-------	-------	-------	-------	-------	-------	-------	-------	-------	-------	-------	-------	-------	-------	-------	-------	-------	-------	-------	-------	-------	-------	-------	-------	-------	-------	-------	-------	-------	-------	-------	-------	-------	-------	-------	-------	-------	-------	-------	-------	-------	-------	-------	-------	-------	-------	-------	-------	-------	-------	-------	-------	-------	-------	-------	-------	-------	-------	-------	-------	-------	-------	-------	-------	-------	-------	-------	-------	-------	-------	-------	-------	-------	-------	-------	-------	-------	-------	-------	-------	-------	-------	-------	-------	-------	-------	-------	-------	-------	-------	-------	-------	-------	-------	-------	-------	-------	-------	-------	-------	-------	-------	-------	-------	-------	-------	-------	-------	-------	-------	-------	-------	-------	-------	-------	-------	-------	-------	-------	-------	-------	-------	-------	-------	-------	-------	-------	-------	-------	-------	-------	-------	-------	-------	-------	-------	-------	-------	-------	-------	-------	-------	-------	-------	-------	-------	-------	-------	-------	-------	-------	-------	-------	-------	-------	-------	-------	-------	-------	-------	-------	-------	-------	-------	-------	-------	-------	-------	-------	-------	-------	-------	-------	-------	-------	-------	-------	-------	-------	-------	-------	-------	-------	-------	-------	-------	-------	-------	-------	-------	-------	-------	-------	-------	-------	-------	-------	-------	-------	-------	-------	-------	-------	-------	-------	-------	-------	-------	-------	-------	-------	-------	-------	-------	-------	-------	-------	-------	-------	-------	-------	-------	-------	-------	-------	-------	-------	-------	-------	-------	-------	-------	-------	-------	-------	-------	-------	-------	-------	-------	-------	-------	-------	-------	-------	-------	-------	-------	-------	-------	-------	-------	-------	-------	-------	-------	-------	-------	-------	-------	-------	-------	-------	-------	-------	-------	-------	-------	-------	-------	-------	-------	-------	-------	-------	-------	-------	-------	-------	-------	-------	-------	-------	-------	-------	-------	-------	-------	-------	-------	-------	-------	-------	-------	-------	-------	-------	-------	-------	-------	-------	-------	-------	-------	-------	-------	-------	-------	-------	-------	-------	-------	-------	-------	-------	-------	-------	-------	-------	-------	-------	-------	-------	-------	-------	-------	-------	-------	-------	-------	-------	-------	-------	-------	-------	-------	-------	-------	-------	-------	-------	-------

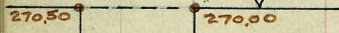
Checked OK 3/21/16 Gregory

LARK & DOUGLASS STS.

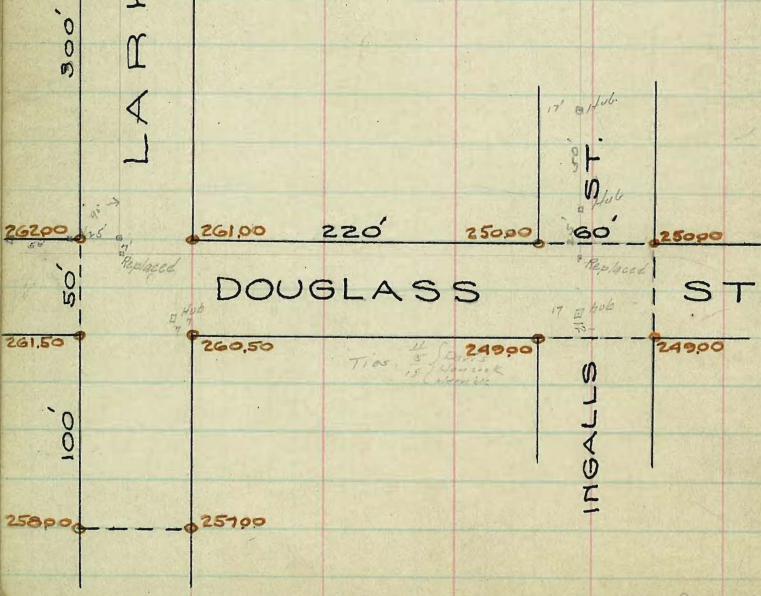
FORT STOCKTON DR.



WASHINGTON ST.



LARK ST.



DOUGLASS ST.

INGALLS ST.

Notes: 11 12 13 14 15 16 17 18 19 20 21 22 23 24 25 26 27 28 29 30 31 32 33 34 35 36 37 38 39 40 41 42 43 44 45 46 47 48 49 50 51 52 53 54 55 56 57 58 59 60 61 62 63 64 65 66 67 68 69 70 71 72 73 74 75 76 77 78 79 80 81 82 83 84 85 86 87 88 89 90 91 92 93 94 95 96 97 98 99 100

SWy 7/14/15

SE Lark & Ft. Stockton 273.00

SE v v Washington 269.24

	W	Curb	1/4	+	1/4	Curb	E
S.L. Fort Stockton	25626	25600	25585	25650	25640	25700	25725
25' So.	25571	25556	25549	25593	25581	25641	25666
50' ..	25517	25492	25475	25538	25523	25583	25608
75'	25463	25438	25420	25482	25465	25525	25550
100'	25409	25384	25364	25425	25406	25466	25491
125'	25354	25329	25308	25368	25348	25408	25433
150'	25300	25275	25253	25312	25290	25350	25375
175'	25246	25221	25198	25256	25232	25292	25317
200'	25192	25167	25143	25200	25173	25233	25258
225'	25138	25113	25088	25144	25115	25175	25200
250'	25083	25058	25033	25087	25057	25117	25142
275'	25029	25004	24978	25031	24998	25058	25083
300' S. = H.L. Hickory	24975	24950	24922	24975	24940	25000	25025

HICKORY ST. INTERSECTION 50' ST.

H.L. HICKORY	24975	24950	24922	24975	24940	25000	25025
Curb	24950	24950	24922	24965	24930	25000	25000
1/4	24850	24850				24900	24900
Center	24890	24837	24905	24958	24923	24888	24940
1/4	24925	24825	24897	24950	24915	24875	24975
Curb	24872	24812	24905	24942	24908	24862	24922
1/4	24800	24800				24850	24850
S.L. HICKORY	24925	24900	24872	24925	24890	24950	24975

25000 N.L. Hickory cross street 250' 25000 25517 25625 Property/Minist + 2 cut-stakes
 25725 25725 7/15 6/27 4/17 5/30 2/12 4/24 1/15 Gregory
 25725 25725 25725 25725 25725 25725 25725 25725 Moore Miller

Grader Lime Chks OK. Has not been sprinkled or rolled
 7/15/15 Gregory.

59' ST. 49

HICKORY STREET

	Π	Corb	$\frac{1}{4}$	Φ	$\frac{1}{4}$	Corb	S
WL AMPUDIA	249.75	249.50	249.10	249.25	248.60	249.00	249.25
25' W.	248.13	247.88	247.48	247.69	247.10	247.50	247.75
50'	246.50	246.25	245.85	246.12	245.60	246.00	246.25
75'	244.87	244.62	244.22	244.56	244.10	244.50	244.75
100'	243.25	243.00	242.60	243.00	242.60	243.00	243.25
125'	241.62	241.38	240.98	241.44	241.10	241.50	241.75
150'	240.00	239.75	239.35	239.87	239.60	240.00	240.25
175'	238.37	238.12	237.72	238.31	238.10	238.50	238.75
200'	236.75	236.50	236.10	236.75	236.40	237.00	237.25
225'	235.13	234.88	234.63	235.19	234.90	235.50	235.75
250'	233.50	233.25	233.03	233.62	233.40	234.00	234.25
275'	231.87	231.62	231.44	232.06	231.90	232.50	232.75
300' W. = E.L. ARISTA	230.25	230.00	229.85	230.50	230.40	231.00	231.25

20706 N.E. Trias + FF Station B.P.
150.00 V - Ampudia + Hickory B.P.

49

249.75 249.50 249.10 249.25 248.60 249.00 249.25
 248.13 247.88 247.48 247.69 247.10 247.50 247.75
 246.50 246.25 245.85 246.12 245.60 246.00 246.25
 244.87 244.62 244.22 244.56 244.10 244.50 244.75
 243.25 243.00 242.60 243.00 242.60 243.00 243.25
 241.62 241.38 240.98 241.44 241.10 241.50 241.75
 240.00 239.75 239.35 239.87 239.60 240.00 240.25
 238.37 238.12 237.72 238.31 238.10 238.50 238.75
 236.75 236.50 236.10 236.75 236.40 237.00 237.25
 235.13 234.88 234.63 235.19 234.90 235.50 235.75
 233.50 233.25 233.03 233.62 233.40 234.00 234.25
 231.87 231.62 231.44 232.06 231.90 232.50 232.75
 230.25 230.00 229.85 230.50 230.40 231.00 231.25

OUT STAKES ON NO. 12 ST.
 7/19/15 Gregory
 Miller

Grade and Line OK. Has not been rolled. 7/30/15 Gregory

802. 7/17/15

50' ST
10' WALKWAY

MILBRAE STREET

W CURB 1/4 E 1/4 CURB E

25' H.	50' "	75' "	100'	125'	150'	175'	200'	225'	250'	275'	300'	325'	350'	375'	400'	440' H = SL
60.06	61.36	62.67	63.98	65.28	66.59	67.90	69.21	70.51	71.81	73.13	74.43	75.74	77.05	78.35	79.66	81.75
59.41	60.71	62.02	63.33	64.63	65.94	67.25	68.56	69.86	71.17	72.48	73.78	75.09	76.40	77.70	79.01	81.10
60.04	61.33	62.62	63.92	65.21	66.51	67.80	69.09	70.38	71.67	72.97	74.26	75.55	76.84	78.13	79.43	81.50
59.88	61.16	62.43	63.71	64.99	66.27	67.55	68.82	70.10	71.38	72.66	73.94	75.21	76.49	77.77	79.05	81.10
60.08	61.56	63.02	64.47	65.91	67.34	68.76	70.17	71.58	72.98	74.38	75.77	77.16	78.54	79.92	81.30	83.65
59.00	60.59	62.16	63.71	65.24	66.76	68.27	69.77	71.26	72.74	74.21	75.67	77.12	78.56	79.99	81.41	83.80

511490
511491

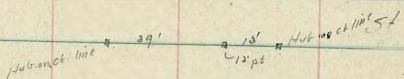
Office Book #
Field # 445

02 50

9/10/15

56

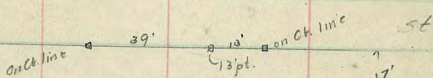
Alabama



Mission

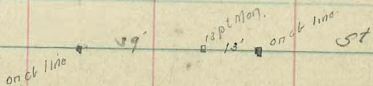
Drive

Florida



Moynce

Georgia



56

Texas

56

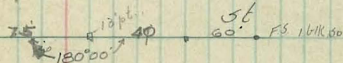


Louisiana

56

Moynce

Mississippi



80' ST 52
14' walks
13' Quarters

MOTROE AVENUE

	S	Curb	1/4	1/2	3/4	Curb	1/4
EL. GEORGIA	347.15	347.00	346.75	347.30	347.00	347.00	347.85
25' E	345.16	344.91	344.66	345.21	344.92	345.52	345.77
50' "	343.06	342.81	342.57	343.14	342.86	343.46	343.71
75'	340.96	340.71	340.48	341.06	340.80	341.40	341.65
100'	338.87	338.62	338.40	338.98	338.72	339.32	339.58
125'	336.77	336.52	336.31	336.90	336.67	337.27	337.52
150'	334.67	334.42	334.22	334.81	334.60	335.20	335.45
175'	332.57	332.32	332.12	332.73	332.54	333.14	333.39
200'	330.48	330.23	330.04	330.65	330.48	331.08	331.33
225'	328.38	328.13	327.95	328.57	328.41	329.01	329.26
250'	326.28	326.03	325.86	326.49	326.35	326.95	327.20
275'	324.19	323.94	323.78	324.41	324.28	324.88	325.13
300'	322.09	321.84	321.68	322.33	322.22	322.82	323.07
FLORIDA							
310' E. = W.L. of	321.25	321.00	320.85	321.50	321.40	322.00	322.25

FLORIDA INTERSECTION EXCEPTED

EL. FLORIDA	320.25	320.00	319.85	320.50	320.40	321.00	321.25
N.W.L. Mission on S.							
1564' E. =	320.43	320.18	320.02	320.66	320.53	321.13	321.38
3686' "		320.42	320.22	320.81	320.70	321.30	321.55
5656'			320.40	321.00	320.86	321.46	321.71
7626'				321.18	321.02	321.62	321.87
9596'					321.33	321.77	322.02
11566'						321.93	322.18
Mission on N.							
13689' = N.W.L. of						322.10	322.35

1770 1770 1770 1770 1770

Box 977
" 9

347.01 = B.P. S.E. Georgia

52

347.01	347.06	347.11	347.16	347.21	347.26	347.31	347.36	347.41	347.46	347.51	347.56	347.61	347.66	347.71	347.76	347.81	347.86	347.91	347.96
1.21	1.21	1.21	1.21	1.21	1.21	1.21	1.21	1.21	1.21	1.21	1.21	1.21	1.21	1.21	1.21	1.21	1.21	1.21	1.21
347.01	347.06	347.11	347.16	347.21	347.26	347.31	347.36	347.41	347.46	347.51	347.56	347.61	347.66	347.71	347.76	347.81	347.86	347.91	347.96
1.21	1.21	1.21	1.21	1.21	1.21	1.21	1.21	1.21	1.21	1.21	1.21	1.21	1.21	1.21	1.21	1.21	1.21	1.21	1.21

CUTS & FILLS
Gregory Miller
2 cracks in curb
Other mis. in this
B.K. OK 3/16/10 Gregory Miller
2 crack in SW.
Return Curb
Mission
Parade grounds
walk N side Florida
Mission

Signy marks fills
one ft. deep

	S	Curb 1/4	E	1/4	Curb 1/4	T
EL. MISS.	337.25	337.90	336.60	337.90	336.60	337.00 337.15
25' E	337.33	337.98	336.69	337.10	336.72	337.13 337.38
50'	337.42	337.17	336.79	337.21	336.83	337.26 337.51
75'	337.50	337.25	336.89	337.32	336.95	337.39 337.64
100'	337.58	337.33	336.98	337.43	337.07	337.53 337.78
125'	337.66	337.41	337.07	337.53	337.19	337.66 337.91
140'	337.71	337.45	337.07	337.53	337.19	337.66 337.91
150'	337.75	337.50	337.17	337.64	337.31	337.79 338.04
160'	337.78	337.55	337.17	337.64	337.31	337.79 338.04
175'	337.83	337.58	337.26	337.75	337.43	337.93 338.18
200'	337.92	337.67	337.36	337.87	337.54	338.06 338.31
225'	338.00	337.75	337.45	337.97	337.66	338.20 338.45
250'	338.09	337.84	337.55	338.09	337.78	338.33 338.58
275'	338.17	337.92	337.65	338.19	337.89	338.46 338.71
LOUISIANA						
300' E. = W.L.	338.25	338.00	337.75	338.30	338.00	338.60 338.85

LOUISIANA INTERSECTION excepted

EL. LOUISIANA	337.25	337.40	337.15	337.70	337.40	338.00 338.25
25' E	337.73	337.48	337.24	337.80	337.52	338.12 338.37
50'	337.81	337.56	337.33	337.90	337.64	338.24 338.49
75'	337.89	337.64	337.82	338.00	337.76	338.36 338.61
100'	337.98	337.73	337.51	338.10	337.87	338.47 338.72
125'	338.06	337.81	337.60	338.20	338.00	338.59 338.84
140'	338.11	337.95	337.69	338.30	338.11	338.71 338.96
150'	338.14	337.89	337.69	338.30	338.11	338.71 338.96
160'	338.17	337.98	337.79	338.40	338.22	338.82 339.07
175'	338.23	337.98	337.79	338.40	338.22	338.82 339.07
200'	338.32	338.07	337.89	338.50	338.33	338.93 339.18
225'	338.40	338.15	337.98	338.60	338.45	339.05 339.30
250'	338.48	338.23	338.06	338.70	338.57	339.17 339.42
263'	338.52	338.27	338.11	338.75	338.63	339.23 339.48
275'	338.56	338.31	338.16	338.80	338.69	339.29 339.54
300' E. = W.L.	338.65	338.40	338.25	338.90	338.80	339.40 339.65

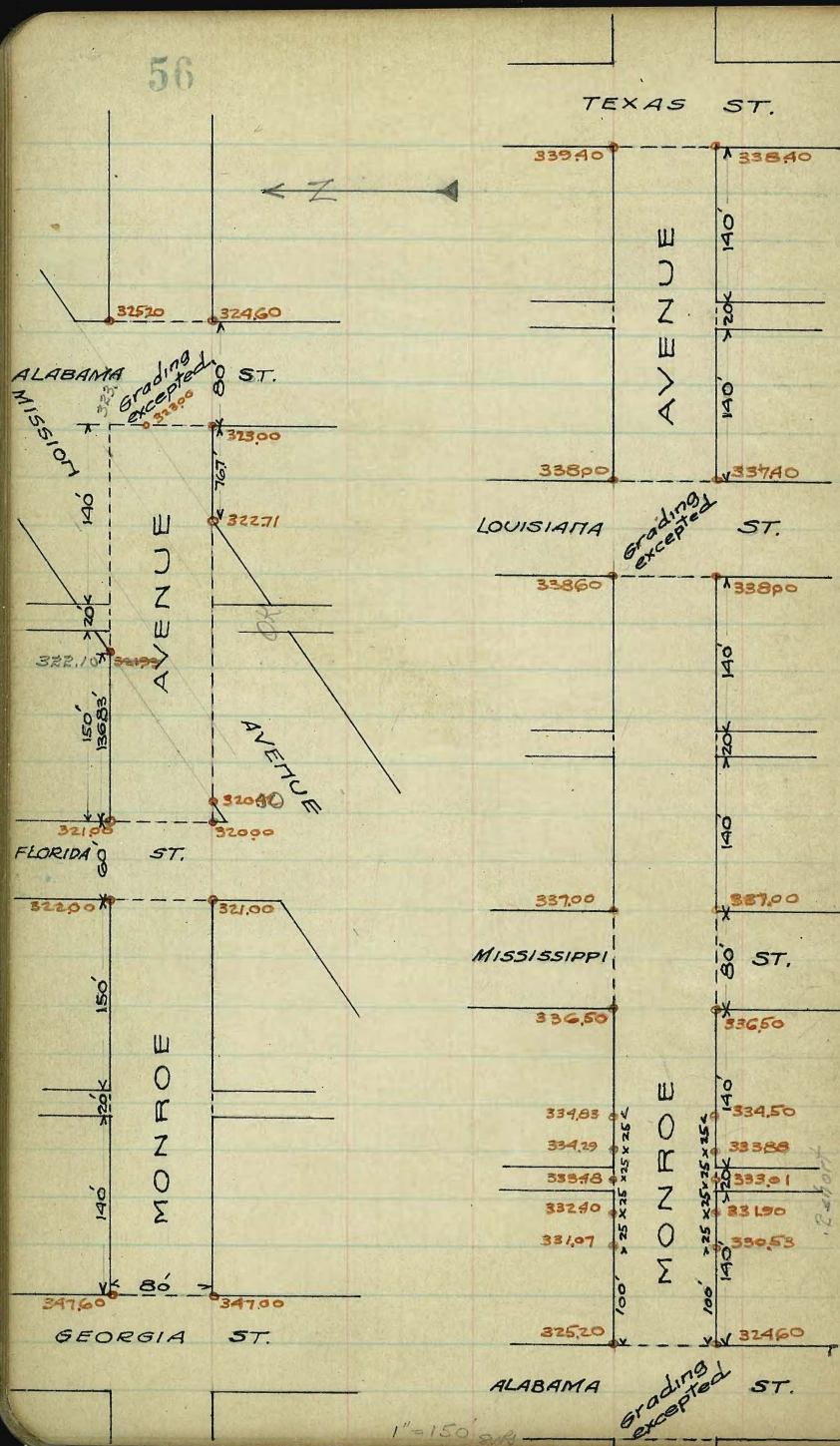
337.25	337.25	337.25	337.25	337.25	337.25	337.25	337.25	337.25	337.25	337.25	337.25
337.33	337.33	337.33	337.33	337.33	337.33	337.33	337.33	337.33	337.33	337.33	337.33
337.42	337.42	337.42	337.42	337.42	337.42	337.42	337.42	337.42	337.42	337.42	337.42
337.50	337.50	337.50	337.50	337.50	337.50	337.50	337.50	337.50	337.50	337.50	337.50
337.58	337.58	337.58	337.58	337.58	337.58	337.58	337.58	337.58	337.58	337.58	337.58
337.66	337.66	337.66	337.66	337.66	337.66	337.66	337.66	337.66	337.66	337.66	337.66
337.71	337.71	337.71	337.71	337.71	337.71	337.71	337.71	337.71	337.71	337.71	337.71
337.75	337.75	337.75	337.75	337.75	337.75	337.75	337.75	337.75	337.75	337.75	337.75
337.78	337.78	337.78	337.78	337.78	337.78	337.78	337.78	337.78	337.78	337.78	337.78
337.83	337.83	337.83	337.83	337.83	337.83	337.83	337.83	337.83	337.83	337.83	337.83
337.92	337.92	337.92	337.92	337.92	337.92	337.92	337.92	337.92	337.92	337.92	337.92
338.00	338.00	338.00	338.00	338.00	338.00	338.00	338.00	338.00	338.00	338.00	338.00
338.09	338.09	338.09	338.09	338.09	338.09	338.09	338.09	338.09	338.09	338.09	338.09
338.17	338.17	338.17	338.17	338.17	338.17	338.17	338.17	338.17	338.17	338.17	338.17
338.25	338.25	338.25	338.25	338.25	338.25	338.25	338.25	338.25	338.25	338.25	338.25

337.35	337.35	337.35	337.35	337.35	337.35	337.35	337.35	337.35	337.35	337.35	337.35
337.40	337.40	337.40	337.40	337.40	337.40	337.40	337.40	337.40	337.40	337.40	337.40
337.45	337.45	337.45	337.45	337.45	337.45	337.45	337.45	337.45	337.45	337.45	337.45
337.50	337.50	337.50	337.50	337.50	337.50	337.50	337.50	337.50	337.50	337.50	337.50
337.55	337.55	337.55	337.55	337.55	337.55	337.55	337.55	337.55	337.55	337.55	337.55
337.60	337.60	337.60	337.60	337.60	337.60	337.60	337.60	337.60	337.60	337.60	337.60
337.65	337.65	337.65	337.65	337.65	337.65	337.65	337.65	337.65	337.65	337.65	337.65
337.70	337.70	337.70	337.70	337.70	337.70	337.70	337.70	337.70	337.70	337.70	337.70
337.75	337.75	337.75	337.75	337.75	337.75	337.75	337.75	337.75	337.75	337.75	337.75
337.80	337.80	337.80	337.80	337.80	337.80	337.80	337.80	337.80	337.80	337.80	337.80
337.85	337.85	337.85	337.85	337.85	337.85	337.85	337.85	337.85	337.85	337.85	337.85
337.90	337.90	337.90	337.90	337.90	337.90	337.90	337.90	337.90	337.90	337.90	337.90
337.95	337.95	337.95	337.95	337.95	337.95	337.95	337.95	337.95	337.95	337.95	337.95
338.00	338.00	338.00	338.00	338.00	338.00	338.00	338.00	338.00	338.00	338.00	338.00
338.05	338.05	338.05	338.05	338.05	338.05	338.05	338.05	338.05	338.05	338.05	338.05
338.10	338.10	338.10	338.10	338.10	338.10	338.10	338.10	338.10	338.10	338.10	338.10
338.15	338.15	338.15	338.15	338.15	338.15	338.15	338.15	338.15	338.15	338.15	338.15
338.20	338.20	338.20	338.20	338.20	338.20	338.20	338.20	338.20	338.20	338.20	338.20
338.25	338.25	338.25	338.25	338.25	338.25	338.25	338.25	338.25	338.25	338.25	338.25
338.30	338.30	338.30	338.30	338.30	338.30	338.30	338.30	338.30	338.30	338.30	338.30
338.35	338.35	338.35	338.35	338.35	338.35	338.35	338.35	338.35	338.35	338.35	338.35
338.40	338.40	338.40	338.40	338.40	338.40	338.40	338.40	338.40	338.40	338.40	338.40
338.45	338.45	338.45	338.45	338.45	338.45	338.45	338.45	338.45	338.45	338.45	338.45
338.50	338.50	338.50	338.50	338.50	338.50	338.50	338.50	338.50	338.50	338.50	338.50
338.55	338.55	338.55	338.55	338.55	338.55	338.55	338.55	338.55	338.55	338.55	338.55
338.60	338.60	338.60	338.60	338.60	338.60	338.60	338.60	338.60	338.60	338.60	338.60
338.65	338.65	338.65	338.65	338.65	338.65	338.65	338.65	338.65	338.65	338.65	338.65
338.70	338.70	338.70	338.70	338.70	338.70	338.70	338.70	338.70	338.70	338.70	338.70
338.75	338.75	338.75	338.75	338.75	338.75	338.75	338.75	338.75	338.75	338.75	338.75
338.80	338.80	338.80	338.80	338.80	338.80	338.80	338.80	338.80	338.80	338.80	338.80
338.85	338.85	338.85	338.85	338.85	338.85	338.85	338.85	338.85	338.85	338.85	338.85
338.90	338.90	338.90	338.90	338.90	338.90	338.90	338.90	338.90	338.90	338.90	338.90
338.95	338.95	338.95	338.95	338.95	338.95	338.95	338.95	338.95	338.95	338.95	338.95
339.00	339.00	339.00	339.00	339.00	339.00	339.00	339.00	339.00	339.00	339.00	339.00

Gregory Moore Miller
 1/16
 Curb stakes set 4' from curb line
 3/16
 Gregory Moore Miller

7 cracks in So Curb.
 5 small break in No Walk
 Bad kink in No. Curb Just west of X Louisiana

SE Pt. inside corner broken
 7 Cracks in both No. 50 Curbs



1" = 150'

4.50
 317.74
 6.40
 316.04
 317.93
 322.44
 1.51
 2.01
 2.0
 2.2
 2.40
 12.0
 17.0
 17.0
 1.0
 1.5
 1.5
 317.09
 3.4

wide walks

57

RAVINA St.
N Curb 1/4 & 1/4 Curb S
Girard St Intersection

Girard	9525	9500	9480	9500	9460	9500	9525
Curb Torrey Rd.	9500 9400	9500 9400	9480	9527	9490	9536	9561
H	9485	9425	9500	9551	9521	9568	9593
Center	9550	9450	9520	9575	9550	9600	9625
1/4	9540	9475	9540	9599	9579	9630	9657
Curb	9500 9600	9500 9600	9560	9623	9608	9664	9689
E. Torrey Rd.	9625	9600	9585	9650	9640	9700	9725
E. Torrey Rd. (of Herschel)	9625	9600	9585	9650	9640	9700	9725
307.5 E = 125 W	9688	9663	9649	9716	9709	9769	9794
100 W Herschel	9739	9714	9700	9770	9765	9825	9850
75 W	9791	9766	9755	9824	9821	9881	9906
50 W	9843	9818	9808	9878	9877	9937	9960
25 W	9894	9869	9861	9931	9933	9993	10018
W.L. Herschel	9946	9921	9914	9986	9990	10050	10075
W.L. Herschel	9946	9921	9914	9986	9990	10050	10075
W. Curb	10000	9975	9963	10030	10027	10050	10050
W 1/4	10055	10030	10010	10074	10064	10050	10060
Center	10110	10085	10061	10118	10100	10050	10150
E 1/4	10165	10140	10110	10160	10137	10100	10199
E Curb	10220	10195	10160	10206	10173	10250	1025
E.L. Herschel	10275	10250	10210	10250	10210	10250	102

Book 980

out 10397
187.58
M. Shine & ...
M. College & ...

111.16	10075	9962	1303	9543	9739	9850	9725
99.46	10.41	11.54	98.11	4.08	5.72	4.01	5.26
11.7	12.41	12.24	4.40	5.98	6.72	4.91	4.16
12.6	2.0	0.7	102.51	1.9	1.6	0.0	1.1
-0.9	6.04	10.10	10.10	10.35			
96.25	96.40	10.10	10.10	10.10	98.18	97.14	
6.26	128	6.26	95.25	103.33	5.15	6.19	
6.66	97.68	13.38	7.26	99.21	96.2	95.50	
-0.4	10.64	10.9	7.06	96.0	4.12	7.33	95.50
	87.04	10.10	10.2	733	7.58	8.33	6.33
99.25	99.37	100.50	10.00	95.00	96.00		
5.08	3.96	2.83	96.40	11.40	10.40		
	94.00	106.40	106.40				
97.0	9.40						
47.14	98.25	99.37	95.18	99.21	100.50	102.50	
9.26	8.15	7.03	8.22	7.19	5.90	3.90	
			101.35	5.35			
			106.93	106.93			
			95.50	95.50			
			17.43	17.43			

RAVINA

	ft	Curve 1/4	¢	1/4	Curve S	
E.L. Herschel	102.75	102.50	102.10	102.50	102.10	102.50 102.75
250' W. of High	103.75	103.70	103.30	103.68	103.27	103.97 103.92
225 W	105.31	105.06	104.66	105.03	104.60	105.00 105.25
200 W	106.68	106.43	106.03	106.28	105.94	106.34 106.51
175 W	108.04	107.79	107.39	107.73	107.27	107.67 107.92
150 W	109.40	109.15	108.75	109.07	108.60	109.00 109.25
125 W	110.76	110.51	110.11	110.42	109.93	110.33 110.58
100	112.13	111.88	111.48	111.77	111.27	111.67 111.92
75	113.49	113.24	112.84	113.12	112.60	113.00 113.25
50	114.84	114.59	114.19	114.46	113.93	114.33 114.58
25 W	116.20	115.95	115.55	115.81	115.27	115.67 115.92
W.L. High	117.55	117.30	116.90	117.15	116.60	117.00 117.25
W. Line High	117.55	117.30	116.90	117.15	116.60	117.00 117.25
W.Cb.	118.09	117.84	117.41	117.59	117.00	117.00 117.00
1/4	118.14	118.39	117.92	118.03	117.40	116.50 117.10
Center	119.19	118.93	118.44	118.46	117.80	117.00 118.00
1/4	119.73	119.48	118.95	118.90	118.20	117.50 118.40
E.Cb.	120.27	120.02	119.46	119.34	118.60	118.00 119.00
EL High	120.82	120.57	119.97	119.78	119.00	119.00 119.25

122.26 H.I.	117.75	117.53	114.80	114.58	111.92	112.13
5.01	4.71	7.42	7.68	10.34	10.13	58
5.21	4.01	8.62	6.33	9.64	12.23	
0.2	40.7	7.2	+0.8	70.7	-2.1	
4.57		12.52		109.40	109.26	106.59 106.68
117.69 T.P. 10' to curb.		109.74	5.01	-1.76	1.91	4.57 4.48
		1.42		-3.66	1.91	4.87 5.18
		111.16 H.I.		-1.9	0.0	-0.3 -1.0
103.95	103.92	103.75				
7.21	7.24	8.41	9.61	9.78		
8.57	7.84	8.51	7.2	101.38		
-1.3	0.6	-0.1				
114.59	111.81	111.67	109.0	117.30	109.15	
7.41	10.12	10.33	13.00	4.70	12.85	
103.67	103.70			11.3	106.43 106.34	
6.60	6.57	8.89		109.14	3.84 3.93	
102.50		101.38		110.27 H.I.		
7.77	106.40 H.I.			106.34	106.43	0.00
	103.70			0.06	0.0	106.40 H.I.
	2.70					12.78
109.15	109.2	111.67	111.58	114.59	114.33	119.28 H.I.
10.13	70.28	7.61	7.40	4.69	4.95	
117.0	117.3	120.57	119.0	0.31		
2.28	2.0	7.1		118.97 J.P.	119.6	120.57
				10.28	10.85	9.28
				129.80 H.I.		
117.64						
5.87						
123.56 H.I.						
117.0						
6.56						

540
5270
810

RAVINA

W curb 1/4 ± 1/4 curb E

El. High	12082	12057	11997	11922	11900	11900	11925
7.85 E High	12125	12100	12040	12025	11948	11950	11975
Seal C.D	12125	12100	12060	12100	12090	12100	12125
134.5 S of High	12125	12100	12093	121.67	121.74	122.34	122.50
100 S	12318	12293	12287	123.62	123.70	124.30	124.55
75	12457	12437	12427	125.02	125.19	125.72	125.97
50	12597	12572	12568	126.44	126.55	127.15	127.40
25	12736	12711	12708	127.84	127.97	128.57	128.82
El. High St.	12875	12850	12847	129.25	129.40	130.00	130.25

HIGH ST. INTERSECTION 80' ST. Cloud on E Side

El. High	12875	12850	12847	129.25	129.40	130.00	130.25
1/4 Curb	12850	12850	128.99	129.57	129.92	130.52	130.77
1/4	12885	12825	129.48	130.26	130.41	131.01	131.26
Center	13000	12900	129.97	130.75	130.90	131.50	131.75
1/4	13090	12975	130.46	131.24	131.89	131.99	132.24
1/4 Curb	13150	13150	130.95	131.73	131.88	132.48	132.73
N.6 High	13175	13150	131.47	132.25	132.40	133.00	133.25

N.1 High	13175	13150	131.47	132.25	132.40	133.00	133.25
25 N	13320	13295	132.92	133.70	133.85	134.45	134.70
50	13465	13440	134.37	135.15	135.30	135.90	136.15
75	13610	13585	135.82	136.60	136.75	137.35	137.60
100	13755	13730	137.27	138.05	138.20	138.80	139.05
125	13900	13875	138.72	139.50	139.65	140.25	140.50
150	14045	14020	140.17	140.95	141.10	141.70	141.95
175	14190	14165	141.62	142.40	142.55	143.15	143.40
200 N	14335	14310	143.07	143.85	144.00	144.60	144.85

148.98 H.I.	144.25	141.90	140.45	137.63	139.05	136.15
148.35	140.35	137.75	135.35	131.13	129.43	127.83
5.63	3.6	2.75	2.7	1.93	5.93	11.23
4.63	1.6	1.4	1.4	1.4	4.0	11.6
+1.0	18.08	131.73	133.25	130.25	128.75	
134.65	135.90 J.P.	5.43	3.93	6.93	9.43	
14.33	1.28	6.03	3.43	10.23	12.33	
14.03	137.18 H.I.	-0.6		-3.3	-3.9	
+0.3	9.54	10.5				
Thin Line 89' Long	127.64	10' to 10' T curb	12.44			
			12.74	J.P. 10' to 10'		
126.97	127.40	124.53	123.18	121.15	127.36 H.I.	6.87
1.39	2.8	2.81	4.18	6.11	122.59	121.25
4.39	2.8	5.51	6.78	6.71	6.11	120.49
3.0	-2.8	-2.7	-2.6	6.51	4.77	10.01
172	120.52	119.26		-0.8	7.57	-3.9
122.26 H.I.	1.44	3.01	120.74 J.P.			
	16.4	4.81	9.11		1330	1300
	-0.2	-1.8	133.85 H.I.		0.85	3.85
						125.72
	127.15	124.36	131.50		128.50	8.13
	6.70	9.35	2.35		5.35	
	122.93	121.0	122.34		1.00	120.57
	10.92	12.85	11.51		121.00	1.43
					122.00 H.I.	
		1.13			119.0	
	127.64	133.0	135.90	134.40	3.00	138.80
	12.43	7.07	4.17	5.67	137.80	1.27
	140.07 H.I.			2.77		
139.05	141.70	140.20	143.10	144.60		
11.86	10.71	7.81	6.31		139.85 H.I.	
150.91 H.I.	9.21					
					121.0	
124.80	122.93	125.72	127.15		8.85	
5.55	6.92	4.13	2.70	130.0	128.50	
127.64						1.35
11.0	131.50	133.0	135.90	134.40	132.30	132.80
138.64 H.I.	7.14	5.64	2.74	4.24	1.34	0.16
138.64 J.P.	141.70	140.20	143.10	144.60		
11.62	8.56	10.06	7.16	5.66	124.74	
150.26 H.I.					9.50	
					134.29 H.I.	
					130	
					4.29	

RAVINA

W Curb 1/4 E 1/4 Curb E

225 N. of High	144.80	144.35	144.82	145.30	145.45	146.65	146.30
250	146.25	146.00	145.96	146.75	146.90	147.50	147.75
275	147.70	147.45	147.42	148.20	148.35	148.95	149.20
300	149.15	148.90	148.87	149.65	149.80	150.40	150.65
325	150.60	150.35	150.32	151.10	151.25	151.85	152.15
350	152.05	151.80	151.78	152.55	152.70	153.30	153.55
375	153.50	153.25	153.22	154.00	154.15	154.75	155.00
400	154.95	154.70	154.67	155.45	155.60	156.20	156.45
425	156.40	156.15	156.12	156.90	157.05	157.65	157.90
450	157.85	157.60	157.57	158.35	158.50	159.10	159.35
475 N	159.30	159.05	159.02	159.80	159.95	160.55	160.80
500 N. of St. Ivanhoe	160.75	160.50	160.47	161.25	161.40	162.00	162.25

IVANHOE AVE. E. INTERSECTION 80' ST.

S.L. IVANHOE	16075	16050	16047	16125	16140	16200	16225
S. Curb	16050	16050	16093	16173	16192	16200	16200
1/4	15950	15950				16100	16100
1/4	16075	16012	16136	16217	16241	16175	16235
Center	16175	16075	16178	16262	16290	16250	16350
1/4	16240	16137	16221	16307	16339	16325	16440
H. Curb	16200	16200				16400	16400
H. Curb	16300	16300	16264	16352	16388	16500	16500
N.L. IVANHOE	16325	16300	16310	16400	16440	16500	16525

1717.9 H.I.	162.20	159.35	12.79	5.8	157.85	154.9	60
169.75	7.54	12.44	159.00	1.13	2.28	157.60	
111.04	7.94	10.94	160.79	4.2	4.48	628	
13.6	+7.6	+7.5	149.15	152.65	147.75	146.25	
-2.6	3.68	6.58	8.98	10.98	9.48	12.38	13.88
	2.08	5.18	8.08	9.68	7.88	10.18	11.88
	+7.6	+7.4	0.0	47.3	47.6	42.2	42.0
1294	150.91 H.I.	146.0	150.40	150.65	151.80	154.70	
147.19	147.50	4.91	0.57	162.94 H.I.	77.74	8.24	
1.79	3.41	148.90	153.30	156.20	159.10		
148.98 H.I.	2.01	2.01	9.64	6.74	3.84		
	157.60	160.50	162.0	169.39	165.0	163.0	
	5.34	2.44	0.94	177.64 H.I.	6.64	8.64	
150.26 H.I.	148.90	152.40	0.18	153.30	157.80		
147.50	146.0	1.36	-0.14	152.11 H.I.	9.07	10.57	
2.76	4.26			1226 H.I.	170.11		
154.70	152.20	159.10	157.60	162.87 H.I.	0.10		
7.67	6.17	3.27	4.77	160.50	162.0		
165.0	160.50			1.87	6.37	170.51 H.I.	
5.87	70.01						

61

RAVINA

	W	Curb	1/4	☉	1/4	Curb	E
Mk VANHOE	163.25	163.00	163.10	164.00	164.40	165.00	165.25
25' N	164.81	164.56	164.62	165.48	165.81	166.41	166.66
50' N	166.37	166.12	166.14	166.96	167.21	167.81	168.06
75' N	167.94	167.69	167.67	168.45	168.62	169.22	169.47
100'	169.50	169.25	169.19	169.93	170.25	170.62	170.87
125'	171.06	170.81	170.72	171.42	171.43	172.03	172.28
150'	172.62	172.37	172.23	172.90	172.83	173.43	173.68
175'	174.18	173.93	173.75	174.38	174.24	174.84	175.09
200'	175.74	175.49	175.28	175.87	175.65	176.25	176.50
240'	178.25	178.00	177.72	178.25	177.90	178.50	178.75
275' 35	178.92	178.67	178.43	179.02	178.77	179.37	179.62
300' 25	179.40	179.15	178.96	179.57	179.39	179.99	180.24
325'	179.88	179.63	179.48	180.13	180.02	180.62	180.87
350'	180.36	180.11	179.98	180.68	180.65	181.25	181.50
375'	180.84	180.59	180.51	181.23	181.28	181.88	181.13
400'	181.32	181.07	181.02	181.78	181.90	182.50	182.75
425'	181.80	181.55	181.54	182.33	182.52	183.12	183.37
450'	182.28	182.03	182.05	182.88	183.14	183.74	183.99
475'	182.77	182.52	182.58	183.44	183.77	184.37	184.62
495'	183.13	182.88	182.97	183.86	184.25	184.85	185.10
500' - St. Evange R.	183.00	183.00	183.10	184.00	185.00	185.00	185.25

192.00 H.I.	185.25	183.74	182.23	181.32	182.75	181.50
183.25	6.75	8.00	9.72	10.68	9.28	6.49
8.75	3.95	2.00	11.02	10.08	2.85	6.49
0.0	+1.8	+1.4	-1.3	+0.6	+6.4	+5.6
180.36	179.40	180.74	178.75	182.0	178.25	178.74
11.64	17.26	11.26	13.25	179.30	179.30	176.50
10.74	12.60	7.76	11.65	180.41	178.74	176.50
10.9	13.50	+3.5	7.16	178.25	178.74	176.50
0.9	-0.9					
173.68	172.62	169.50	170.87	168.06	165.25	10.00
6.73	7.79	10.91	9.54	12.35	15.16	170.41
5.53	10.99	13.51	7.94	10.75	11.16	170.41
1.72	-3.2	2.6	4.6	7.6	11.0	170.41
135	166.57	163.25	170.41	166.12	169.25	170.62
11.79	5.42	9.54	178.94	12.82	9.69	8.32
0.94	7.2	9.64	167.81	172.37	175.49	176.25
178.0	179.25	179.15	179.94	181.25	180.11	181.07
189.98	179.98	10.83	9.99	8.73	9.87	8.91
183.99	182.03	183.0	185.25	7.48	181.50	182.03
5.99	7.95	6.98	4.73	181.50	179.99	179.15
183.74	182.50	181.07	180.11	181.25	179.99	179.15
5.37	6.61	8.04	9.00	7.86	9.12	9.96
178.50	178.41	165.0	1630	166.12	167.81	170.62
16.61	3.43	8.84	8.84	7.72	6.93	3.22
172.37	173.43	0.11	176.25	175.49		
178.0	175.0	1.47	0.41	173.73	7.94	8.70
6.19	5.69	4.19	5.04	10.46		
180.11	181.25	182.00	181.07	182.03	183.74	183.74
4.08	2.94	1.69	3.12	2.16	0.45	187.53
				185.0		
				2.37		

RAVINA

EXCHANGE PL. INTERSECTION 80' ST.

	W	Curb	1/4	1/2	3/4	Curb	E
S.L. Exch. Pl.	183.25	183.00	183.10	184.00	184.90	185.00	185.25
S Curb	183.00	183.00	183.35	184.25	184.65	185.00	185.00
1/4	182.25	182.25	183.47	184.37	184.77	184.25	184.85
Center	183.50	184.50	183.60	184.50	184.90	184.50	185.50
1/4	183.40	182.75	183.73	184.63	185.03	184.75	185.40
N.Curb	184.00	184.00	183.85	184.75	185.15	186.00	186.00
N.L. Exch. Pl.	184.25	184.00	184.10	185.00	185.90	186.00	186.25
N.L. Exch. Pl.	184.25	184.00	184.10	185.00	185.90	186.00	186.25
2' H	184.35	184.10	184.20	185.10	185.50	186.10	186.35
2.5'	185.50	185.25	185.35	186.25	186.65	187.25	187.50
50'	186.75	186.50	186.60	187.50	187.90	188.50	188.75
75'	188.00	187.75	187.85	188.75	189.15	189.75	190.00
100'	189.25	189.00	189.10	190.00	190.40	191.00	191.25
130'	190.25	190.00	190.10	191.00	191.40	192.00	192.25
150'	190.40	190.15	190.25	191.15	191.55	192.15	192.40
175'	190.54	190.27	190.37	191.27	191.67	192.27	192.54
200'	190.66	190.40	190.50	191.40	191.80	192.40	192.65
225'	190.78	190.53	190.63	191.53	191.93	192.53	192.78
250'	190.90	190.65	190.75	191.65	192.05	192.65	192.90
275'	191.02	190.77	190.87	191.77	192.17	192.77	193.02
300'	191.15	190.90	191.00	191.90	192.30	192.90	193.15
320'	191.25	191.00	191.10	192.00	192.40	193.00	193.25
350'	191.08	190.83	190.93	191.83	192.23	192.83	193.08
375'	190.94	190.69	190.79	191.69	192.09	192.69	192.94
400'	190.80	190.55	190.65	191.55	191.95	192.55	192.80
425'	190.67	190.42	190.52	191.42	191.82	192.42	192.67

1990.2 H.I.	19280	19308	19112	19125	19325	19315
19080	8.22	6.22	5.94	7.94	7.77	5.77
8.22	6.22	5.94	7.94	7.77	5.77	3.87
9.12	1.32	1.74	3.24	7.07	2.97	2.47
-0.9	+5.0	+4.2	-1.1	-1.3	+3.7	+3.4
19116	19090	19090	19265	19065	19040	19240
7.87	8.12	6.12	6.37	8.37	8.62	6.62
8.67	10.12	18.2	11.67	9.17	8.42	1.82
-0.8	-2.0	+4.3	+4.7	-3.8	+0.2	+5.3
189.25	19125	183.75	186.75	186.25	12.81	184.25
9.77	7.77	10.27	12.27	12.77	186.51	7.75
9.17	3.07	4.07	11.87	8.87	549	7.25
+0.6	+4.7	+6.2	+0.4	+4.2	192.00 H.I.	+0.5
195.56 H.I.	190.55	190.83	192.83	193.00	1910	190.90
192.83	3.01	4.73	2.73	2.46	4.56	4.66
3.01	192.65	190.65	190.40	192.40	19215	190.15
2.91	4.91	5.16	3.16	3.41	5.41	4.06
192.20	1910	189.0	186.50	188.50	186.0	184.0
2.21	3.21	5.21	7.71	5.71	8.21	10.21
187.85	190.25	191.0	193.0	192.0	190.0	190.0
8.92	190.80 H.I.	6.52	5.80	3.50	4.80	6.80
196.80	184.02 H.P.	5.10 H.I.	184.0	186.0	185.0	183.0
12.79	189.12	5.14	2.11	4.11	6.11	
185.25	2.76	185.0	190.52 H.I.	1910	192.65	
188.01 H.I.	3.01	190.55	192.83	4.52	2.87	
	4.97	2.69				
190.40	192.15	190.0	188.50	184.0		
5.12	3.37	3.52	7.02	11.52		

RAVINA

	W	Curb	1/4	3/4	1/4	Curb	E
450	190.53	190.28	190.38	191.28	191.68	192.28	192.53
475	190.39	190.14	190.24	191.14	191.54	192.14	192.39
500 N.S. Prospe	190.25	190.00	190.10	191.00	191.40	192.00	192.25

PROSPECT INTERSECTION 80' ST.

Sl. Pros. Pl.	190.25	190.00	190.10	191.00	191.40	192.00	192.25
1" N.	190.23	190.00	190.08	190.98	191.39	192.00	192.23
S. Curb	190.00	190.00	189.80	190.74	191.23	192.00	192.00
1" N. S. Curb	189.00	189.00				191.00	191.00
	189.03	188.96	189.78	190.74	191.23	190.98	191.03
S 1/4	189.40	188.50	189.52	190.50	191.07	190.75	191.40
CENTER	189.00	188.00	189.23	190.25	190.90	190.50	191.50
N 1/4	188.10	187.50	188.93	190.01	190.74	190.25	190.85
	187.00	187.00				190.00	190.00
N. Curb	188.90	188.00	188.66	189.77	190.58	191.00	191.00
N. Prospe. Pl.	188.25	188.00	188.35	189.50	190.70	191.00	191.25

191.25	192.25	192.53	190.53
8.77	6.77	6.50	8.57
9.37	3.17	1.1	8.1
-0.6	+3.6	+5.4	+0.4

187.88 BNI
11.14
199.02 HI

187.58
7.68
195.56 HI
192.28
3.23

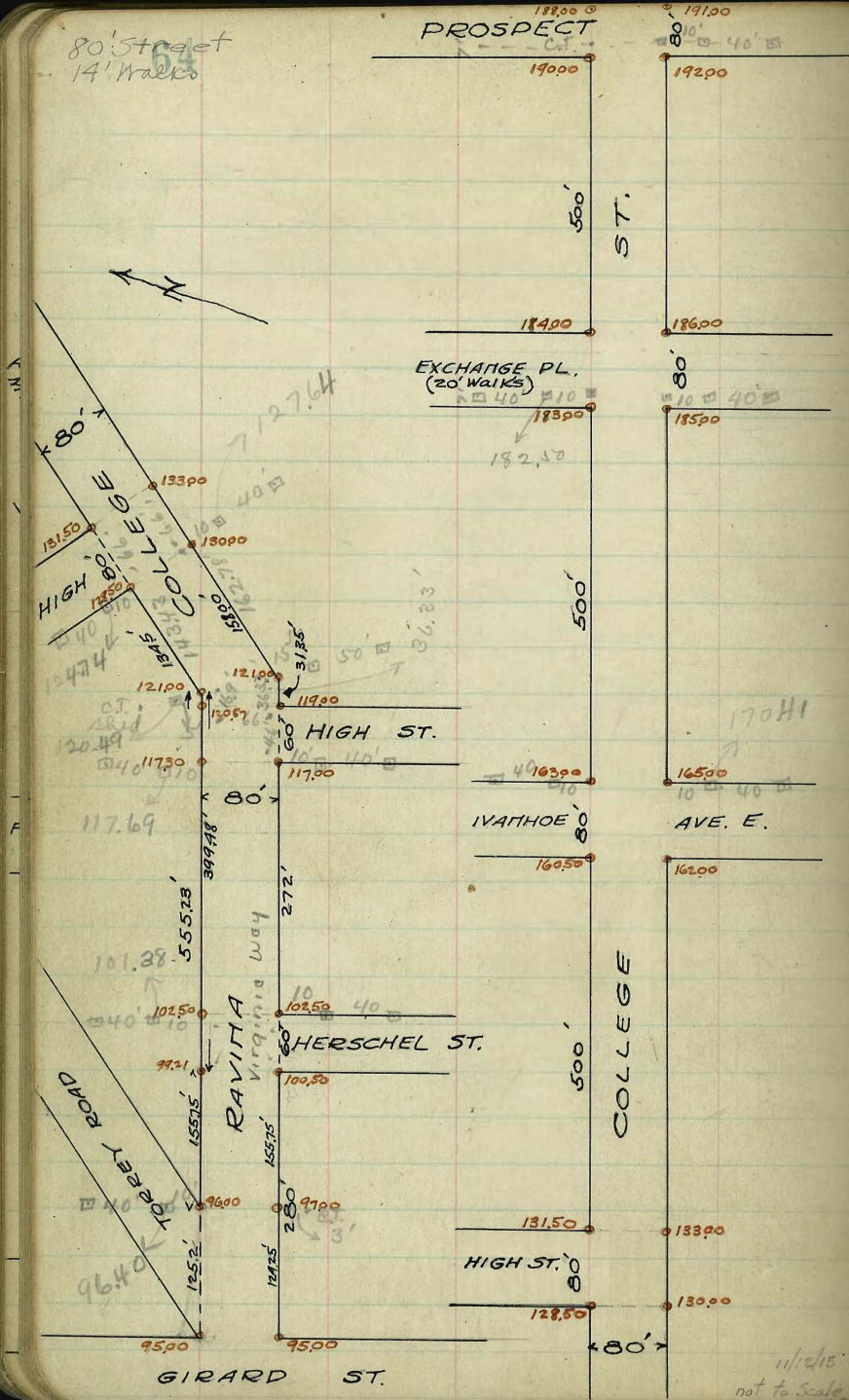
188.0
7.56
187.88
195.52 HI
190.0
5.52
192.28
3.24

80' Street
14' Walks

PROSPECT

188.00
191.00

64



75.43
64.87
170.14

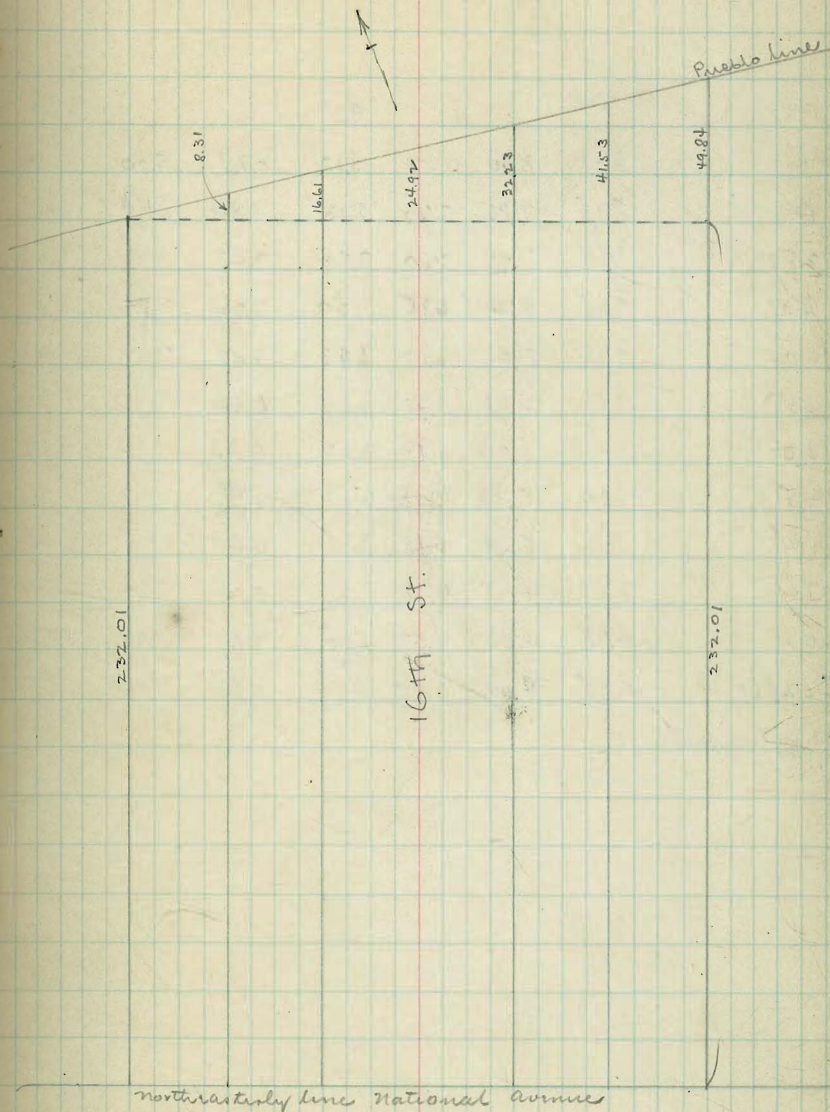
not to scale

	IT	Curb	1/4	¢	1/4	Curb S
W.L. of 1 st ST.	291.25	291.00	290.60	291.00		291.00
25' W.	290.81	290.56	290.16	290.53		290.50
50' "	290.37	290.12	289.72	290.06		290.00
75'	289.93	289.68	289.28	289.59		289.50
100'	289.50	289.25	288.85	289.12		289.00
125'	289.07	288.82	288.42	288.66		288.50
150'	288.63	288.38	287.98	288.19		288.00
175'	288.19	287.94	287.54	287.72		287.50
FRONT ST. 200' W. = E.L. of	287.75	287.50	287.10	287.25		287.00

P.L.		8.00	8.54	9.00			
0	0	8.00	7.68	8.15	7.70	8.30	
25' SW.		7.57	7.27	7.76	7.34	7.95	
40		7.31	7.02	7.52	7.13	7.73	
50		7.14	6.86	7.37	6.99	7.59	
75		6.71	6.44	6.97	6.63	7.24	
100		6.28	6.03	6.58	6.28	6.88	
125		5.85	5.62	6.19	5.92	6.53	
150		5.42	5.21	5.79	5.57	6.17	
175		4.99	4.80	5.40	5.21	5.72	
200		4.55	4.38	5.01	4.86	5.46	
232.0 =	4.25	4.00	3.85	4.50	4.40	5.00	5.25

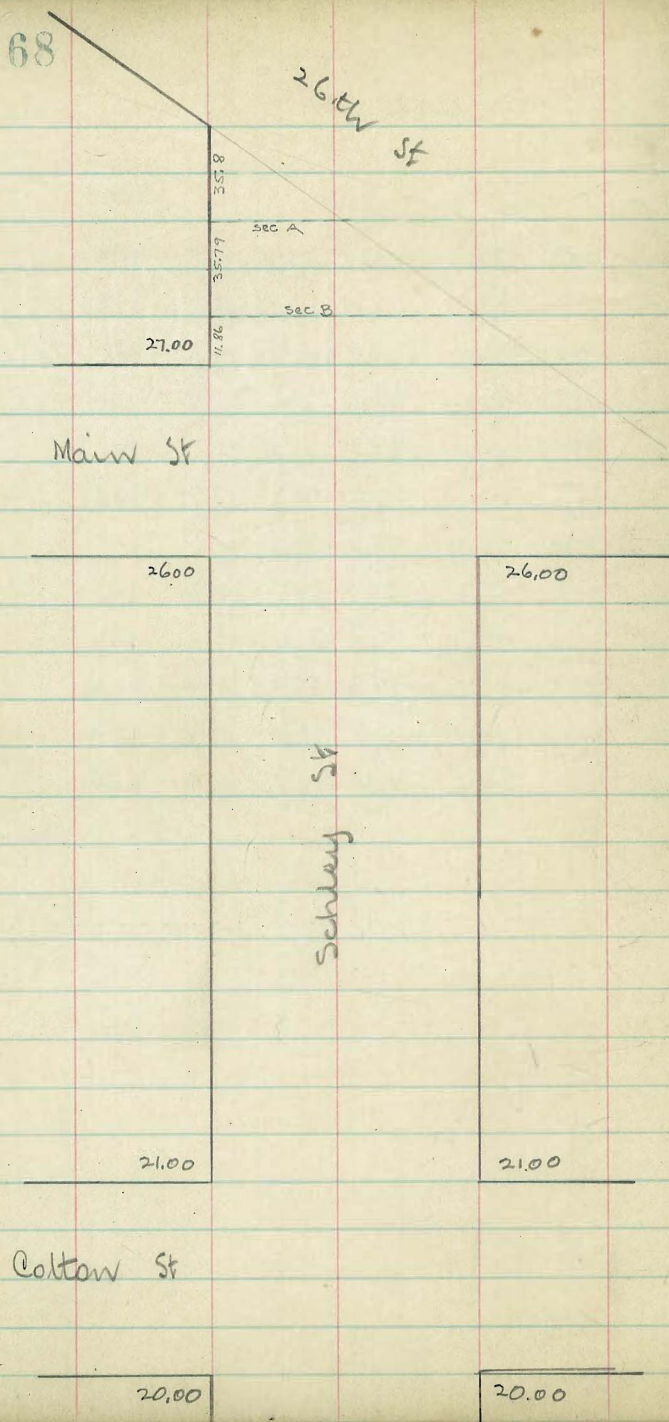
NE line National

see p 67



	NW		E		SE	
PL	8.11 6.67	8.00 7.20	7.87 7.85	8.52 7.62	8.29 7.67	9.00 9.25
0	8.11 6.53	7.86 6.93	7.60 6.93	8.13 7.46	7.80 7.13	8.40 8.65
25	7.69 6.11	7.44 6.53	7.20 6.53	7.74 7.07	7.43 6.76	8.03 8.28
40	7.45 5.87	7.20 6.28	6.95 6.28	7.50 6.83	7.22 6.55	7.82 8.07
50	7.28 5.70	7.03 6.12	6.79 6.68	7.35 6.40	7.07 6.34	7.67 7.92
75	6.86 5.28	6.61 5.72	6.39 6.29	6.96 5.93	6.60 5.97	7.30 7.55
100	6.45 4.87	6.20 5.32	5.99 5.32	6.57 5.90	6.33 5.66	6.94 7.19
125	6.03 4.45	5.78 4.91	5.58 4.91	6.17 5.50	5.97 5.30	6.57 6.82
150	5.61 4.03	5.36 4.51	5.18 4.51	5.78 5.11	5.61 4.94	6.21 6.46
175	5.20 3.62	4.95 4.11	4.78 4.11	5.39 4.72	5.24 4.57	5.84 6.09
200	4.78 3.20	4.53 3.70	4.37 3.70	5.00 4.33	4.87 4.20	5.47 5.72
232.01 =	4.25 2.67	4.00 3.18	3.85 3.18	4.50 3.83	4.40 3.73	5.00 5.25

n.e. National



Schley St.

	nw		E			SE	
W line 26th	28.75	28.29 27.62	27.32	27.20	26.95	26.69	26.44
Sec A	28.11	27.86 27.19	27.16	27.20			
Sec B	27.46	27.21 26.54	26.75	27.05	26.85	26.64	26.44
n line main	27.25	27.00 26.33	26.60	27.00	26.80	26.59	26.39
S w line main	26.25	26.00 25.33	25.60	26.00	25.60	26.00 25.33	26.25
25 SW	25.83	25.58 24.91	25.18	25.58	25.18	25.58 24.91	25.83
50	25.42	25.17 24.50	24.77	25.17	24.77	25.17 24.50	25.42
75	25.00	24.75 24.08	24.35	24.75	24.35	24.75 24.08	25.00
100	24.57	24.32 23.67	23.92	24.32	23.92	24.32 23.67	24.57
125	24.17	23.92 23.25	23.52	23.92	23.52	23.92 23.25	24.17
150	23.75	23.50 22.83	23.10	23.50	23.10	23.50 22.83	23.75
175	23.33	23.08 22.41	22.68	23.08	22.68	23.08 22.41	23.33
181	23.23	22.98 22.31	22.58	22.98	22.58	22.98 22.31	23.23
185	23.17	22.92 22.25	22.52	22.92	22.52	22.92 22.25	23.17
197.56 on NW 189.09 " SE = 2' from rail	22.98	22.73 22.06	22.35	22.78	22.40	22.82 22.15	23.07

Schley - Colton intersection

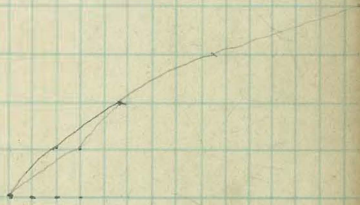
w e line Colton	21.25	¹⁰ 20.33	¹⁰ 20.60	¹⁰ 21.00	¹⁰ 20.60	¹⁰ 20.33	21.25
"							
nr curb	20.33	20.15	20.44	20.84	20.44	20.15	20.33
"							
nr 1/4	20.40	19.99	20.26	20.66	20.26	19.99	20.40
"							
⊕	20.50	19.83	20.10	20.50	20.10	19.83	20.50
"							
sw 1/4	19.85	19.67	19.94	20.34	19.94	19.67	19.85
"							
sw curb	19.33	19.51	19.78	20.18	19.78	19.51	19.33
"							
sw line Colton	20.75	19.33	19.60	20.00	19.60	19.33	20.75

	E	Curb	1/4	E	1/4	Curb	W
on the West							
90 S. of Silverado	133.25	133.00	132.40	131.50	130.35	130.00	130.15
50' S. side	133.25	133.00	132.40	131.18	129.87	129.35	129.61
50' So.	131.45	131.20	130.60	129.47	128.21	127.75	128.00
S.L. SILVERADO	128.25	128.00	127.40	126.50	125.35	125.00	125.15
S.Curb					125.00	125.00	125.15
S 1/4					124.90	124.90	125.15
Center	127.25	127.00	126.40	125.50	124.35	123.00	124.15
N 1/4					124.03	123.50	123.15
N.Curb					123.70	123.00	122.15
M.L. SILVERADO	126.25	126.00	125.40	124.50	123.35	123.00	123.15
50' M.		124.88		123.18		121.68	121.15
100' M.		123.37		121.87		120.37	120.15
150' M.		122.05		120.55		119.05	119.15
190' M.	121.25	121.00		119.50		118.00	118.15
200'	120.78	120.53		119.06		117.60	117.75
250'	118.45	118.20		116.90		115.60	115.85
300'	116.11	115.86		114.73		113.60	113.85
340'	114.25	114.00		113.00		112.00	112.25

Transferred to
Box 90

76' So. on the East.

1345 / 1750 / 6
1980



1015
228
1640

14
14

25' x 36' x 36' v No. v
20 x 30' 3.6' deep.

5.45 1/825
110/130 (11.8)
110
200
110
900
880
200

170.41		190.90		140/15.7 (11.21)	
12.58		4.87		140	
182.96 H.I.		3.17		1.70	
0.12		21.7		140	
182.84 J.P.		186.25		186.75	300
12.93		9.52		3.86	2.80
175.77 H.I.		5.22		197.84	200
184.25		+4.3		3.92	
11.54				1.12	
11.02	0.0	186.25	186.25	2.89	216.5
+0.5	195.77 J.P.	11.21	197.84		3.38
	12.06 H.I.	197.46	3.92		
103.25	207.83 H.I.	10.37	1.12		
4.58		2.17			
	201.95	+1.5	+2.8		
205.90	5.88				
7.93	203.81	4.3	211.34		
0.32	3.98	206.18	8.54		
207.51 J.P.	2.28	1.65	11.72	H.I.	2256
12.37	+0.7		213.92	230.82	5.22
217.88 H.I.		209.76	5.96	221.50	
209.08	213.5	14.12	9.32	226.8	
10.23	6.38	206.18	219.10	11.36	4.02
211.74	216.46	13.70	0.78	7.22	
7.93	3.43	22.78	22.73	226.4	
227.6	228.0	13.02	3.52	4.42	
3.22	2.82				
		✓ gully out 0.1 (King line out 0.5)			
		curb " 0.4 " " " 0.71			
228.65	228.0				
2.17	2.82				
226.4	224.2	221.0	222.65	J.P. top by drain	
4.42	6.62	9.52		Exchange of Solidad	

96
99
94

