

DISTANCES FROM SIDE STAKES FOR CROSS-SECTIONING
SLOPE 1 TO 1. ROADWAY OF ANY WIDTH

	0	.1	.2	.3	.4	.5	.6	.7	.8	9	
0	0.00	0.10	0.20	0.30	0.40	0.50	0.60	0.70	0.80	0.90	0
1	1.00	1.10	1.20	1.30	1.40	1.50	1.60	1.70	1.80	1.90	1
2	2.00	2.10	2.20	2.30	2.40	2.50	2.60	2.70	2.80	2.90	2
3	3.00	3.10	3.20	3.30	3.40	3.50	3.60	3.70	3.80	3.90	3
4	4.00	4.10	4.20	4.30	4.40	4.50	4.60	4.70	4.80	4.90	4
5	5.00	5.10	5.20	5.30	5.40	5.50	5.60	5.70	5.80	5.90	5
6	6.00	6.10	6.20	6.30	6.40	6.50	6.60	6.70	6.80	6.90	6
7	7.00	7.10	7.20	7.30	7.40	7.50	7.60	7.70	7.80	7.90	7
8	8.00	8.10	8.20	8.30	8.40	8.50	8.60	8.70	8.80	8.90	8
9	9.00	9.10	9.20	9.30	9.40	9.50	9.60	9.70	9.80	9.90	9
10	10.00	10.10	10.20	10.30	10.40	10.50	10.60	10.70	10.80	10.90	10
11	11.00	11.10	11.20	11.30	11.40	11.50	11.60	11.70	11.80	11.90	11
12	12.00	12.10	12.20	12.30	12.40	12.50	12.60	12.70	12.80	12.90	12
13	13.00	13.10	13.20	13.30	13.40	13.50	13.60	13.70	13.80	13.90	13
14	14.00	14.10	14.20	14.30	14.40	14.50	14.60	14.70	14.80	14.90	14
15	15.00	15.10	15.20	15.30	15.40	15.50	15.60	15.70	15.80	15.90	15
16	16.00	16.10	16.20	16.30	16.40	16.50	16.60	16.70	16.80	16.90	16
17	17.00	17.10	17.20	17.30	17.40	17.50	17.60	17.70	17.80	17.90	17
18	18.00	18.10	18.20	18.30	18.40	18.50	18.60	18.70	18.80	18.90	18
19	19.00	19.10	19.20	19.30	19.40	19.50	19.60	19.70	19.80	19.90	19
20	20.00	20.10	20.20	20.30	20.40	20.50	20.60	20.70	20.80	20.90	20
21	21.00	21.10	21.20	21.30	21.40	21.50	21.60	21.70	21.80	21.90	21
22	22.00	22.10	22.20	22.30	22.40	22.50	22.60	22.70	22.80	22.90	22
23	23.00	23.10	23.20	23.30	23.40	23.50	23.60	23.70	23.80	23.90	23
24	24.00	24.10	24.20	24.30	24.40	24.50	24.60	24.70	24.80	24.90	24
25	25.00	25.10	25.20	25.30	25.40	25.50	25.60	25.70	25.80	25.90	25
26	26.00	26.10	26.20	26.30	26.40	26.50	26.60	26.70	26.80	26.90	26
27	27.00	27.10	27.20	27.30	27.40	27.50	27.60	27.70	27.80	27.90	27
28	28.00	28.10	28.20	28.30	28.40	28.50	28.60	28.70	28.80	28.90	28
29	29.00	29.10	29.20	29.30	29.40	29.50	29.60	29.70	29.80	29.90	29
30	30.00	30.10	30.20	30.30	30.40	30.50	30.60	30.70	30.80	30.90	30
31	31.00	31.10	31.20	31.30	31.40	31.50	31.60	31.70	31.80	31.90	31
32	32.00	32.10	32.20	32.30	32.40	32.50	32.60	32.70	32.80	32.90	32
33	33.00	33.10	33.20	33.30	33.40	33.50	33.60	33.70	33.80	33.90	33
34	34.00	34.10	34.20	34.30	34.40	34.50	34.60	34.70	34.80	34.90	34
35	35.00	35.10	35.20	35.30	35.40	35.50	35.60	35.70	35.80	35.90	35
36	36.00	36.10	36.20	36.30	36.40	36.50	36.60	36.70	36.80	36.90	36
37	37.00	37.10	37.20	37.30	37.40	37.50	37.60	37.70	37.80	37.90	37
38	38.00	38.10	38.20	38.30	38.40	38.50	38.60	38.70	38.80	38.90	38
39	39.00	39.10	39.20	39.30	39.40	39.50	39.60	39.70	39.80	39.90	39
40	40.00	40.10	40.20	40.30	40.40	40.50	40.60	40.70	40.80	40.90	40
41	41.00	41.10	41.20	41.30	41.40	41.50	41.60	41.70	41.80	41.90	41
42	42.00	42.10	42.20	42.30	42.40	42.50	42.60	42.70	42.80	42.90	42
43	43.00	43.10	43.20	43.30	43.40	43.50	43.60	43.70	43.80	43.90	43
44	44.00	44.10	44.20	44.30	44.40	44.50	44.60	44.70	44.80	44.90	44
45	45.00	45.10	45.20	45.30	45.40	45.50	45.60	45.70	45.80	45.90	45
46	46.00	46.10	46.20	46.30	46.40	46.50	46.60	46.70	46.80	46.90	46
47	47.00	47.10	47.20	47.30	47.40	47.50	47.60	47.70	47.80	47.90	47
48	48.00	48.10	48.20	48.30	48.40	48.50	48.60	48.70	48.80	48.90	48
49	49.00	49.10	49.20	49.30	49.40	49.50	49.60	49.70	49.80	49.90	49
50	50.00	50.10	50.20	50.30	50.40	50.50	50.60	50.70	50.80	50.90	50

Distance of slope stake from side or shoulder stake for any width roadway, slope 1 to 1. If ground is nearly level, the cut or fill at side stake is located by the double entry method in left column and top row. The number in body of table in same row and column gives distance from side stake to slope stake. If ground is not level estimate the difference in elevation between the side stake and slope stake, lower target by this amount if cut, elevate if fill. Add this amount to cut or fill and find distance in table. Set up rod at this point, and line of sight should cut target. If it does not make the slight adjustment necessary.

TABLE XIII—CORRECTIONS FOR TANGENTS AND EXTERNALS

These corrections are to be added to the approximate values, found by dividing the tangent, or external, for a 1° curve (Table VIII) by the degree of curve, in order to obtain the true tangents, or externals. Intermediate values may be obtained by interpolation.

FOR TANGENTS ADD

Central Angle	DEGREE OF CURVE													
	5°	10°	15°	20°	25°	30°	35°	40°	45°	50°	55°	60°	65°	70°
10°	.03	.06	.09	.13	.16	.19	.22	.25	.28	.31	.34	.38	.42	.46
15°	.04	.10	.14	.19	.24	.29	.34	.39	.45	.51	.53	.58	.63	.68
20°	.06	.13	.19	.26	.32	.39	.45	.51	.58	.65	.72	.79	.84	.90
25°	.08	.16	.24	.33	.40	.49	.58	.67	.75	.83	.90	.99	1.06	1.14
30°	.10	.19	.29	.39	.49	.59	.69	.79	.89	.99	1.09	1.20	1.29	1.39
35°	.11	.22	.34	.47	.58	.69	.79	.81	.92	1.04	1.29	1.42	1.54	1.66
40°	.13	.26	.40	.53	.67	.80	.93	1.06	1.20	1.34	1.49	1.64	1.79	1.94
45°	.15	.30	.44	.60	.76	.91	1.06	1.21	1.37	1.52	1.70	1.87	2.04	2.21
50°	.17	.34	.51	.68	.85	1.02	1.19	1.36	1.54	1.72	1.91	2.10	2.29	2.48
55°	.19	.38	.57	.76	.95	1.14	1.32	1.52	1.72	1.92	2.14	2.35	2.56	2.77
60°	.21	.42	.63	.84	1.05	1.27	1.49	1.71	1.94	2.17	2.38	2.60	2.83	3.07
65°	.23	.46	.69	.93	1.16	1.40	1.64	1.88	2.13	2.38	2.63	2.88	3.13	3.39
70°	.25	.51	.76	1.02	1.28	1.54	1.80	2.06	2.33	2.60	2.88	3.16	3.44	3.72
75°	.27	.56	.83	1.12	1.40	1.69	1.98	2.27	2.57	2.87	3.16	3.47	3.78	4.09
80°	.30	.61	.91	1.22	1.53	1.84	2.15	2.46	2.78	3.10	3.44	3.78	4.12	4.46
85°	.33	.66	1.00	1.33	1.68	2.02	2.36	2.70	3.05	3.40	3.77	4.14	4.55	4.89
90°	.36	.72	1.09	1.45	1.83	2.20	2.57	2.94	3.32	3.70	4.10	4.50	4.91	5.32
95°	.39	.79	1.19	1.55	2.00	2.40	2.80	3.20	3.61	4.02	4.40	4.98	5.38	5.83
100°	.43	.86	1.30	1.74	2.18	2.62	3.06	3.50	3.95	4.40	4.88	5.37	5.85	6.34
110°	.51	1.03	1.56	2.08	2.61	3.14	3.67	4.21	4.76	5.31	5.86	6.43	7.01	7.60
120°	.62	1.25	1.93	2.52	3.16	3.81	4.45	5.11	5.77	6.44	7.12	7.80	8.50	9.22

FOR EXTERNALS ADD

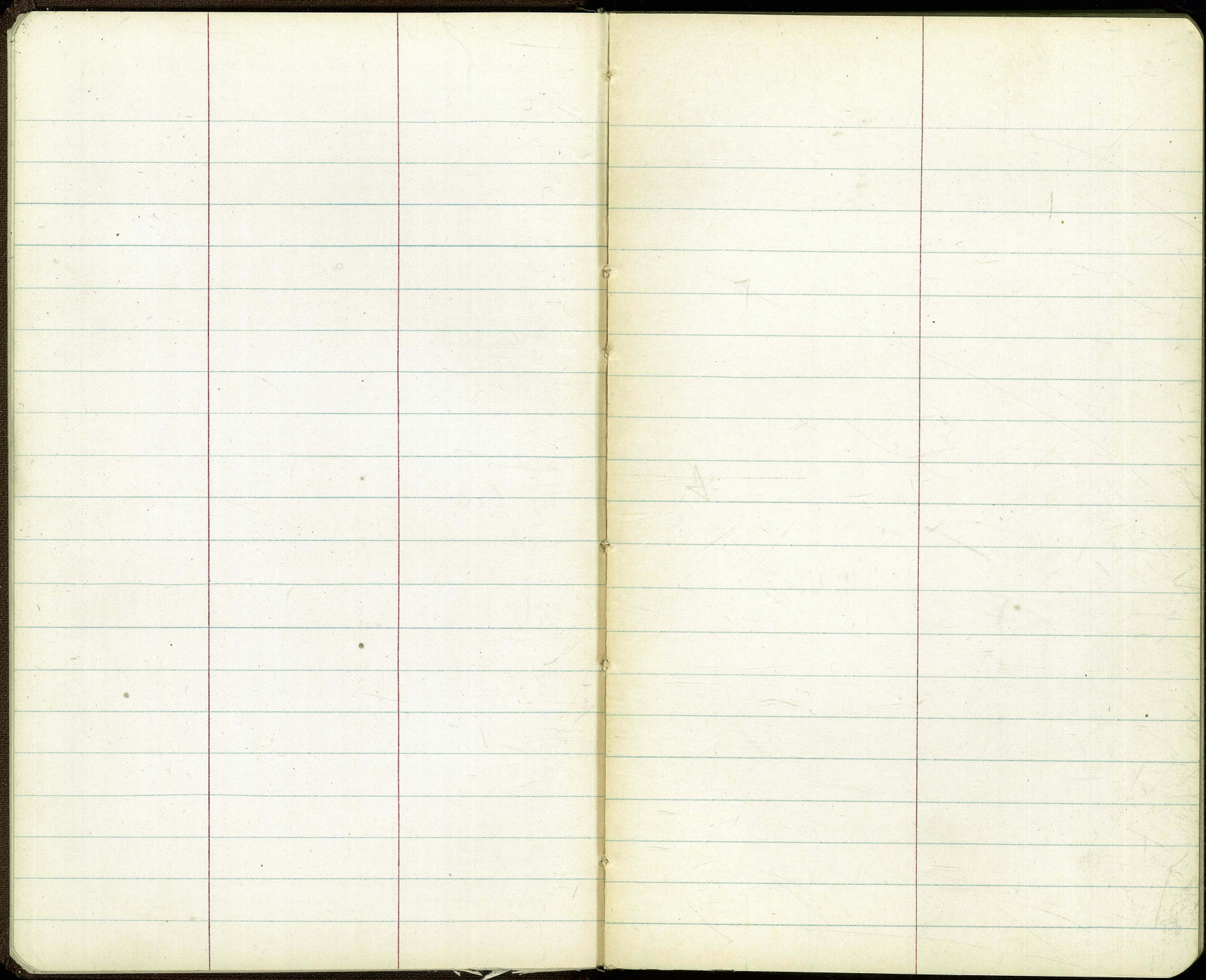
Central Angle	DEGREE OF CURVE													
	5°	10°	15°	20°	25°	30°	35°	40°	45°	50°	55°	60°	65°	70°
10°	.001	.003	.004	.006	.007	.008	.009	.011	.012	.014	.015	.017	.018	.020
15°	.003	.007	.010	.014	.018	.023	.027	.029	.032	.035	.039	.043	.047	.051
20°	.006	.011	.017	.022	.028	.034	.038	.045	.051	.057	.063	.070	.076	.083
25°	.009	.018	.027	.036	.046	.056	.065	.074	.083	.093	.106	.120	.127	.135
30°	.013	.025	.038	.051	.065	.078	.090	.103	.116	.129	.149	.170	.179	.188
35°	.018	.035	.054	.072	.086	.109	.131	.153	.175	.197	.213	.230	.247	.264
40°	.023	.046	.070	.093	.117	.141	.172	.203	.234	.265	.277	.290	.315	.341
45°	.030	.060	.093	.119	.153	.184	.216	.254	.289	.325	.351	.378	.411	.445
50°	.037	.075	.116	.151	.189	.227	.266	.305	.345	.384	.425	.467	.508	.550
55°	.046	.093	.142	.188	.236	.283	.332	.381	.420	.479	.530	.582	.641	.700
60°	.056	.112	.168	.225	.283	.340	.398	.457	.516	.575	.636	.697	.774	.851
65°	.067	.135	.204	.273	.343	.412	.483	.554	.625	.697	.771	.845	.922	1.01
70°	.080	.159	.240	.321	.403	.485	.568	.652	.735	.819	.906	.994	1.08	1.17
75°	.095	.182	.286	.383	.480	.578	.678	.777	.877	.977	1.07	1.18	1.29	1.39
80°	.110	.220	.332	.445	.558	.671	.787	.903	1.02	1.13	1.25	1.38	1.50	1.62
85°	.128	.259	.391	.524	.657	.790	.926	1.06	1.20	1.34	1.47	1.62	1.76	1.91
90°	.149	.299	.450	.603	.756	.910	1.07	1.22	1.38	1.54	1.70	1.87	2.03	2.20
95°	.174	.350	.522	.706	.985	1.06	1.25	1.43	1.62	1.80	1.99	2.18	2.38	2.58
100°	.200	.401	.604	.809	1.01	1.22	1.43	1.64	1.85	2.06	2.28	2.50	2.73	2.96
110°	.268	.536	.806	1.08	1.35	1.63	1.91	2.20	2.48	2.76	3.05	3.35	3.66	3.96
120°	.360	.721	1.08	1.45	1.82	2.19	2.57	2.95	3.33	3.72	4.11	4.50	4.91	5.32

✓ SW curve Return - Talbot @ Scott 1.
 Intersection Elephant, clove & Wawona Dr
 Stake obs - Lot 4, Block 9 - Point Lema etc. 5'

✓ CB'S - PORTION LOT 63 (N 1/4 LOGAN AVE) LOS ALTOS } 6
 VILLA SITES

✓ GRADING: 44% & LAUREL 7

Curbs #167 + #236 National Ave 15
 curbs - ONELY of 28th ST & N 1/4
 of J'ST (closed) 18



Roberts
Cota
Moore
Moraloz
12-22-53
W.O. # 20007

Curb Stakes For Lot 29
Encanto Park

2.

Profile 3225

INDEXED
JEA
DEC 24 1953

1716.4

226.90
226.15
C 0.75

0750

226.46
225.84
C 0.62

0775

225.66
225.37
C 0.29

0750 Going Ely

225.72
224.91
C 0.81

0706 SE Corner
66th E Imperial

221.15 SEBP

BM

223.64 Top Fire Hydrant
SE Corner 65th E Imperial

INDEXED

SEP 17 1954

CURB STAKES ON W. 51' FROM UNIV. AVE
ARAGON DRIVE 51' FROM UNIV. AVE

W.O. 20007

1+19.31 Match Curb

1+00 P.C. def $\Delta = 3^{\circ} 02' 12''$

$c = 25.79$

0+75 def $\Delta = 2^{\circ} 15' 20''$

0+50 def $\Delta = 1^{\circ} 30' 13''$

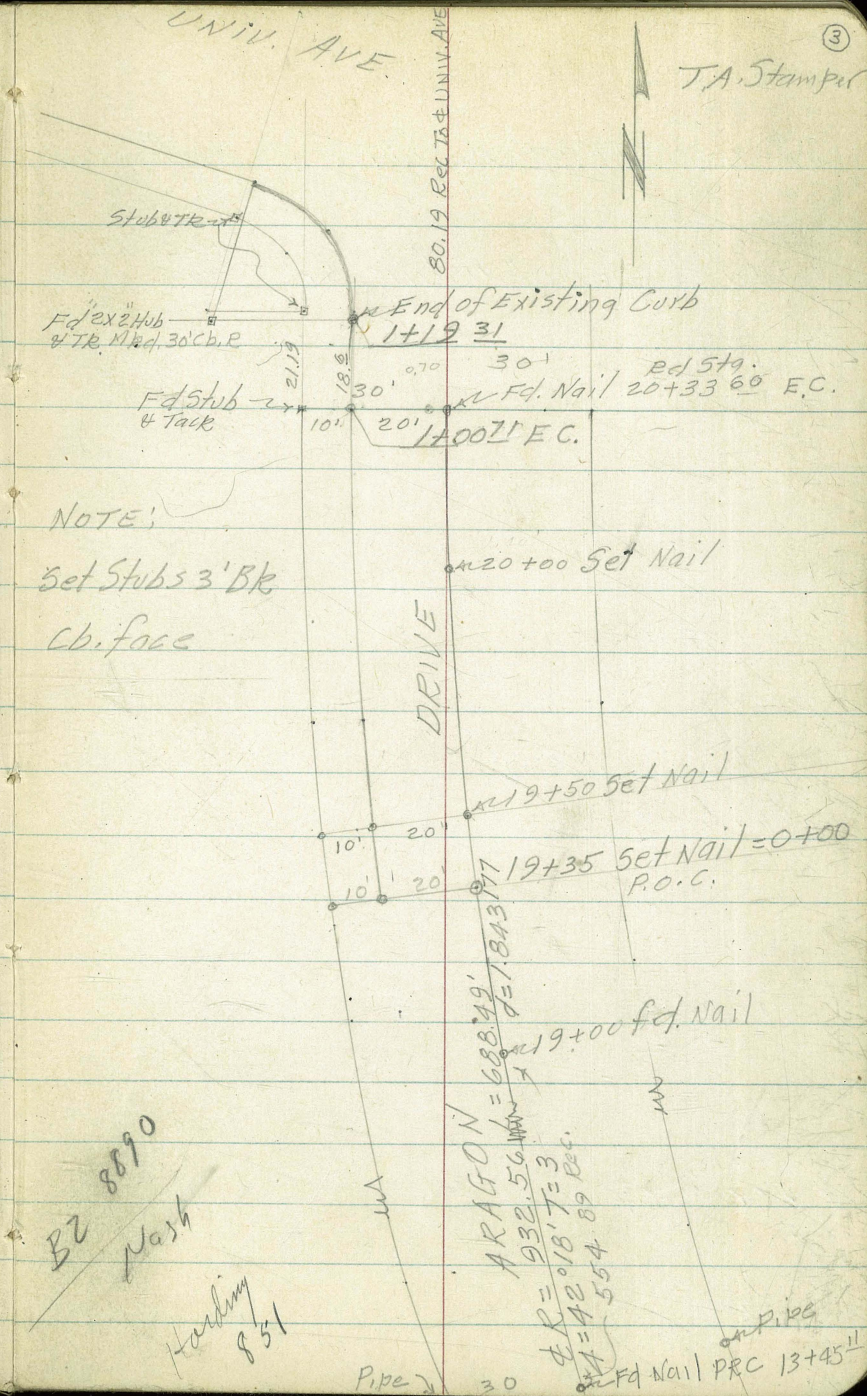
0+25 def $\Delta = 0^{\circ} 45' 07''$

0+00 = P.O.C. Begin Curb

$c = 25.08 = 3' Bk. cb.$

$R = 3' Bk. cb = 955.56' d = 1.798812$

B.M.



NOTE:

Set Stubs 3' Bk
cb. face

BZ 8890
Nash
Handling
851

Pipe 30

ARAGON N
688.49
932.56
42.18.7=3
554.89 Rec.
on Pipe
Fd Nail P.C. 13+45.11

T.A. Stempel (3)

NOTE:

See Sketch
Pg 3Elev.
±
Rd.

9-16-54

Stampert
Hoffman
Gut. Nordahl
Sherry

④

Grades Aragon St. Wly Curb Extension

T.P.
1+19.31 = End Existing Curb (see Sketch)
Pg. 3368.71
Top ch.

Ref; Plat of County

Plans on Univ. Ave

Also R.S. 1307

E0.14

367.78

367.92 - 367.73

1+00 ± EC

4.08

E0.34

366.53

366.87 - 367.18

366.05

0+75 P.O.C.

C0.23

366.08

365.85 - 366.48

365.39

0+50 P.O.C.

3.44

C0.26

365.26

365.00 - 365.71

364.69

0+25 P.O.C.

C0.40

364.53

364.73 - 364.96

363.89

0+00 P.O.C.

B.M.

373.32

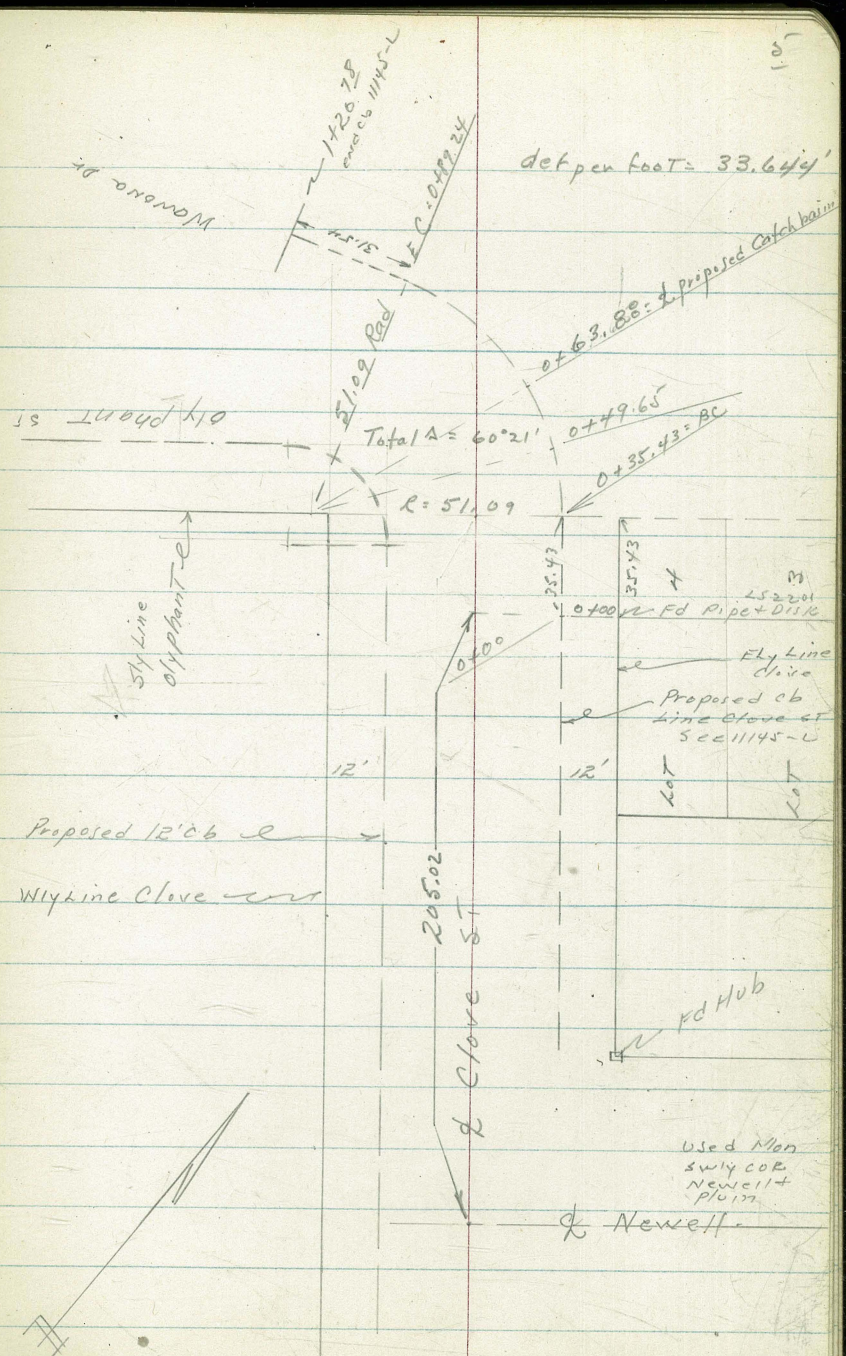
Ed. Chisler 112' ± Nly of ± Univ. Ave & On Ely
Cb. Aragon St. B.M. No 7-A

Curb stakes - Lots 344, Block 9,
 Point Loma HFS,
 W.O.H. 20006 - Sept 24, 1954
 S.C. Allen, D. Sisson, C. Powell
 Ref. 11145-L

INDEXED
 NEW
 SEP 27 1954

Stakes set on face curb for proposed driveway

	Curb Grade	Grade	Stake	Cut or Fill
1+20.78	11145-L	85.12	85.45	C-0.33
0+89.24 Chord = 25.101 30° 10.50'	EC	84.80	85.15	C-0.35
0+63.88 Chord = 14.18 15° 57.18'	∅ Catch 18" Throat Basin	84.55	86.19	C-1.64
0+49.65 Chord = 14.18 7° 58.42'		84.78	89.15	C-4.37
Det per foot = 33.644' Also E.V.C. 0+35.43 = B.C.	∆ = 60° 21' R = 51.09 ∠ = 53.81	85.25	90.47	C-5.22
0+25.43		85.88	91.16	C-5.28
0+15.43		86.75	92.50	C-5.75
0+05.43 (B.V.C.)		87.88	94.24	C-6.36
Property Division Line - See sketch 0+00		88.57	94.54	C-5.97



Clark
Brewer
ONEIL
10-7-54
W.O. 20007

50' CB (NLY LOGAN AVE) PORTION LOT 63-
LAS ALTURAS VILLA SITES

REF. MAP 2852
DNG: 9200-L (Revised 7-3-52)

Permit Receipt # 29594

Note: CB GRADES ON NLY LOGAN SET 0.50 ABOVE EXIST. CO'S SLY AS
(NLY) (Sly)

STA: CB GRADE: LT. ELEV EXIST CB - RT.

CHK: B.M. used (See below) 121.67 = 121.67 (See B.M.)

CB grade note = 3.9%
ON PLAN # 9200-L

0+50 136.44
137.50
F 1.06 137.00

0+25 135.48
136.52
F 1.04 136.02

0+00 135.33
135.55
F 0.22 135.05

Elev. EXIST. CO -
END. NLY
(See sketch) 132.21

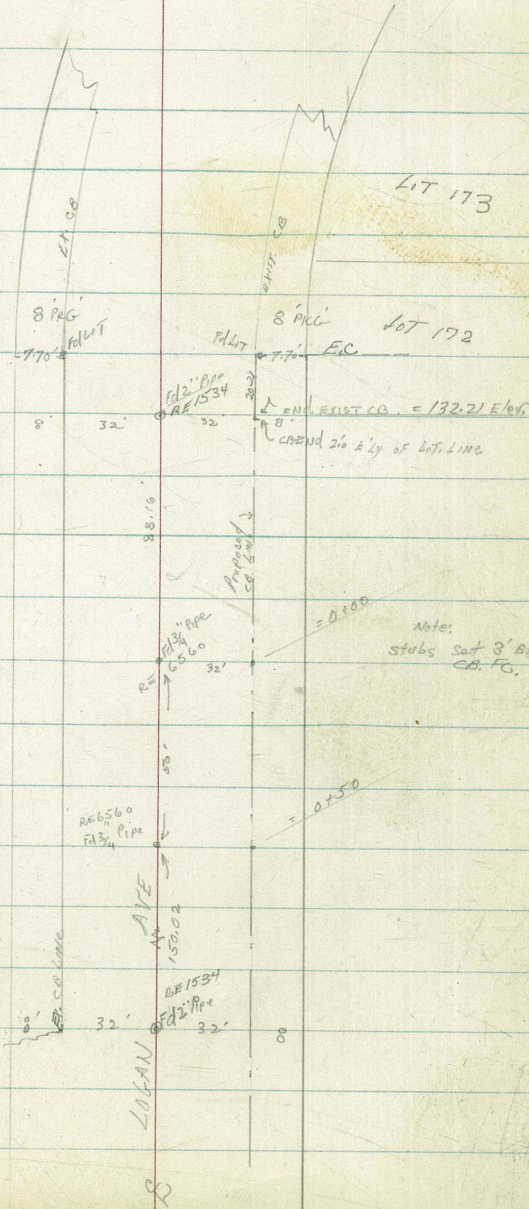
CHK: EXIST. CO'S
AT E.C.
Logan 131.41 130.99

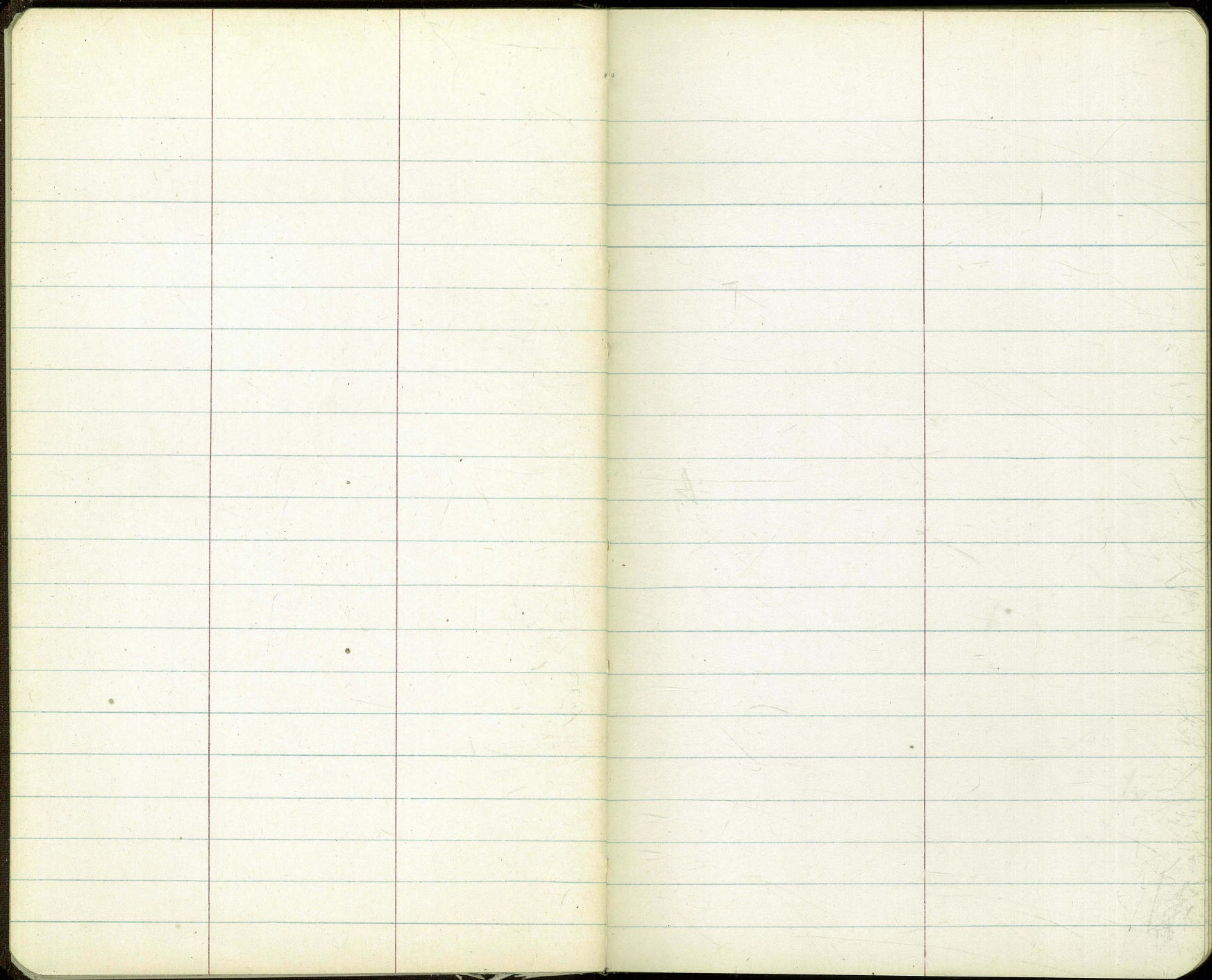
B.M. USED PLAN GRADES AT PCC Plat SE 1/4 Logan - Euclid (access rd.)
Top CB = 121.67

B.M. Dir. Elev. Rod 111.32 = B.P. HEASWELL
Box
COURT W SIDE TO
100' W OF EUCLID
LAN

INDEXED
MER
OCT 5 1954

EUCLID AVE





444
GRADES: LAUREL ST.

STA.	LT.	RT.	STA.	LT.	RT.
1+81.36	265.88 264.15 C 1.73	261.73 263.65 F 1.92	CHK:		280.17 = 280.17 = (576 8 m)
1+61.36	266.32 264.94 C 1.38	260.90 264.44 F 3.54			
1+41.36 = E.C. of Imp's (No 240 F Prop. B.C.)	266.34 265.40 C 0.94	259.71 264.90 F 5.19			
0+94.24 #2	267.86 266.60 C 1.26	245.5 266.10 F 20.6	3+57.36	249.75 251.20 F 1.45	252.83 250.70 C 2.13
0+47.12 #1 <small>grade set on P.L.M. LAUREL</small>	268.98 269.00 C 0.98	253.70 268.50 F 14.8			
(Also B.C. Imp's)			2+91.36	257.40 256.00 C 1.40	261.10 255.50 C 5.6
0+00 = NELY Prop. B.C. 44.42 LAUREL	273.44 271.50 C 1.94	267.20 271.00 F 3.80			
0-50	276.95 274.85 C 2.10	276.14 274.35 C 1.79	2+41.36 = E. Line Alley	263.53 260.00 C 3.53	262.19 259.50 C 2.69
0-100	Meet. 279.2 = Drive		2+21.36 = W. Line Alley	264.70 261.60 C 3.10	262.05 261.10 C 0.95
			2+01.36	265.44 263.04 C 2.40	261.75 262.54 F 0.79

B.M. - W. Eker. Rd. 280.17 = NW B.P Maple - FAIRMOUNT

INDEX FILE

FEB

8 1955

GRADES: ALLEY BIK 19 - SWAN'S

ADD: S. Line Laurel - SLY

SLY L

PT. (W. 4)

chk

280.19 = 280.17 = STG B.M.
(178)

1+20	253.81	254.15
	252.64	252.94
	C 1.17	C 1.21

1+00	256.34	256.07
	254.72	255.02
	C 1.62	C 1.05

0+80	258.21	257.44
	256.54	256.84
	C 1.67	C 0.60

0+60	259.02	258.62
	258.08	258.38
	C 0.94	C 0.24

0+40	260.36	257.91
	259.36	259.66
	C 1.00	C 0.25

0+20	261.31	260.59
	260.10	260.60
	C 1.21	grade

0+00 = S. Line Laurel	262.19	262.05
(grade-steps at 2' BK mp. line)	259.72	261.32
	C 2.47	C 0.73

See sketch of 7

(For B.M. see preced. p.)

D. Smith
J. Koser
H. Taylor
D. Black

WO#
20007
2/21/55

INDEXED
HER

FEB 23 1955
set PK 4 B. view
Proposed ob face
Elev 76.00 here

7523 F.O. 27
to Cb

Note grades used came from Johnsons
print. 7016-L
dd

* 62435 not of grade

0670 ob face



(closed)
old Sly Line Emerald St

Fd + I Ingraham
+ Sly 7 Line Emerald

Ingraham St

set stub 4 ob face Pt.
Elev 71.59 132 F.O. 27
at B.C.
Elev. 71.50 at Pt. Allegre ob face

BM

R.P.
5585 N.E. cor Ingraham + Garnet

Roberts
Koser
Moore
Moralez
2-24-55
W.O. # 62412

Curb Grades South Side Rock Place

5585 B

INDEXED

JER
FEB 22 1955

11

0+93.71 Curb
EC

46051
460.00
C 0.51

0+83.13 curb
BC

46070
460.50
C 0.20

0+60

46111
460.91
C 0.20

Type H Inlet
1+44.52 Exist

456.80
456.80 ✓

0+40

46158
461.25
C 0.33

1+34.52 BRK

45924
457.05
C 2.19

0+20

46160
461.48
F 0.12

1+24.52 BRK

45970
457.57
C 2.13

RL, College Ave
0+00 Exist, Curb

46198
461.94 ✓

1+09.11

46021
458.78
C 1.43

BM 46612 NWBP
E/Cajon § 59¹¹

Clark
Shepherd
Brewer
O'Neil
2-28-55
W.O. 20007

50' CB, (5146 LOGAN AVE) NLY
LOGAN - PORTION LOT 68-LAS ALTURAS
VILLA SITES

Note: (See also sketch pg 6)
(ALIGNMENT DATA, THIS AREA)

INDEXED

MAR 1 1956

12

CHK: CB RT. 108.38' ELY OF E.C. 137.00 - 137.00 pg 6

0+50' END CONST.

138.80
139.36
F. 1.36

0+25'

137.15
138.39
F. 1.24

(3.75' = grade 40' to 45' per
Dwg. G 9200-4)

0+00 - END EXIST NLY CB
158.37' ELY OF E.C. LOGAN

TP. EXIST CB 137.71 Elev

B.M.

See Pg 6 - B.M.

Roberts
Korer
Moore
Kamalez
3-10-55
WA #23832

Stake Paving Alley Campanile Manor

Lots 1 thru 8
Map 2737
Profile 353A
Paving 19" wide per Ed. Gahinley

45692
456.45
C 0.77

45666
456.45 ←
C 0.19

275

INDEXED

MEP

MAR 10 1955

45646
456.36
C 0.10

45666
456.36
C 0.30

2750

1400

45547
455.77
C 0.30

45601
455.77
C 0.24

45677
456.26
C 0.51

45644
456.26
C 0.16

2725

0786.7E/C

45612
455.72
C 0.40

45600
455.72
C 0.28

45662
456.16
C 0.46

45644
456.16
C 0.28

2700

0766.7

45574
455.35
C 0.39

45600
455.35
C 0.65

45616
456.06
C 0.10

45656
456.06
C 0.50

1775

0746.7

45498
454.39
C 0.61

45505
454.39
C 0.66

45614
455.97
C 0.17

45628
455.97
C 0.31

1750

0726.7

45495
452.86
C 2.09

45459
452.86
C 1.73

45644
455.87
C 0.57

45612
455.87
C 0.25

1725

West Line
0706 Campanile Manor

450.96 CB

END
4+23.10 2x1

~~457.03~~

~~457.03~~

4+00

45777
456.94
C0.83

45732
456.94
C0.38

3+75

45836
456.84
C1.52

45847
456.84
C0.63

3+50

45791
456.75
C1.16

45742
456.75
C0.67

3+25

45731
456.65
C0.66

45758
456.65
C0.93

Angle
3+00.22 Point

45709
456.55
C0.54

45650
456.55
F0.05

on Rt. Sta. H20 downspout e wall fd. damaged. cannot blame us.
on Rt Sta. 0+60 Hole in wall before we arrived.

Mr. Lloyd Pennick stated contract was to end of
apartments. So did Mr. Miller.

End of
4+91.5 Apartments

45783
45729
C0.54

45738
45729
C0.09

4+75

45777
45723
C0.54

45768
45723
C0.45

4+50

45740
45714
C0.26

45761
45714
C0.47

4+25

45762
45704
C0.58

45765
45704
C0.61

INDY
DEN
BUN

Stake 90' of Curbs in front of
4235 National Ave (on sly side) and
200' of curb in front of courts at
4167 National Ave - (on Nly side)

Ret Profile Sheet # 3496-
No 20007, 6/2/55 - C. Allen, Division 15
C. Powell - R. Parkl-
RMI = NELY BP
Newton # 43, 100
65.58

Station	Top of Cb Grade	Elev of Stake	edge of A.C. Pave	Station	R/TOP Cb Grade	Elev of Stake	elev. of edge of Pave at cb face
4+50	40.55	F1.33 39.22	39.41				
4+30	41.76	F1.65 40.11	40.60				
4+10 = EVC	42.97	F1.60 41.37	41.86	no ch RT 5+95	31.82	F1.02 30.80	end cb RT 31.00
Begin cb RT = 3+95 Nly.	43.85	F2.19 41.66	42.83	B.V.C. 5+90	32.10	F1.12 30.98	31.25
				5+70	33.29	F1.14 32.15	32.27
END cb LT 2+20	51.23	F0.09 51.14	50.55	5+50	34.50	F1.47 33.03	33.21
B.V.C 2+10	51.47	F0.05 51.52	50.90	5+30	35.71	F1.39 34.32	34.35
1+80	52.29	F0.20 52.09	51.81	5+10	36.92	F1.77 35.15	35.60
1+55	52.97	F0.37 52.60	52.33	4+90	38.13	F0.92 37.21	37.00
Begin cb LT 1+30	53.65	F0.44 53.21	53.20	4+70	39.34	F1.17 38.17	38.24
= w/ 30' of 43rd 0.400 ST							

These Top Curbs
 grader dropped
 0.5' to meet exist pit

These top of curb grader
 dropped 0.5' to better
 fit exist pit.

INDEXED

MEER
JUN 2 1955

CURB STAKES WLY SIDE INGRAHAM FROM NLY.
ALLEY LINE BLK. 184 PACIFIC BEACH 4' 10' E. OF
WLY LINE INGRAHAM NLY. 185' W.O. 20007
(See Sketch Pg 10)

0+75

0+50

0+25

0+04 E.C. Ingraham

0+04 = B.C. 4' cb. Rad. Pt. & Alley Line

Wly Line Ingraham & Alley

B.M.

55.85

2.435%

6-22-55

Stamper (16)
Huffman
Blunt
Elmore

NOTE: Stakes Offset 4'
bk of cb. face

F0 31
3 01
73. 32

F0 18
2 53
72. 71

F0 13
1 97
72. 10

F0 40
1 19
71. 59

F0 39
1 19
71. 58

L 0 08
1 78
71. 70

NEBP Ingraham & Garnet

CURB GRADES INGRAHAM BLVD

1+85

F0.77
5.23
76.00

1+50

F0.69
4.45
75.14

1+25

F0.34
4.20
74.54

1+00

F0.43
3.50
73.93

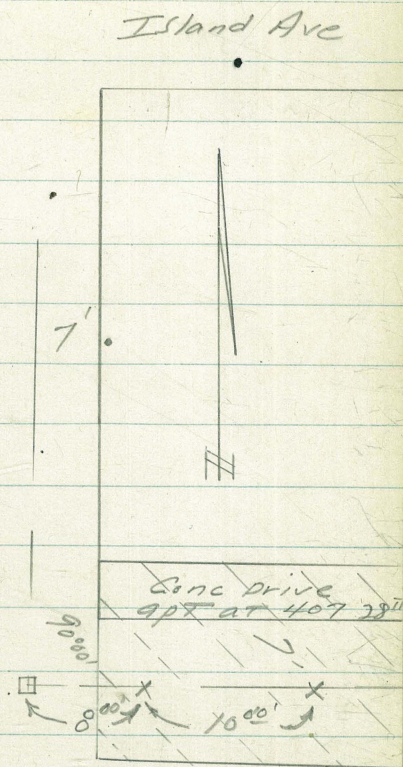
Curb stakes - Nly of J ST (closed)
 + Ely side of 28th
 Profile Sheet # 1570 - FB 2044-6-

Station | Top of Grade | Elev of Stake - 3' hts | cut or fill

BM = Top Catch Basin on Ely side
 at 0700
 of 28th ST - FB 2044-6 - = 88.02

INDEXED
 JER
 JUL 6 1955

Tie out of 7' x 7'
 Hub at NEly cor
 28th + J ST.
 J ST is
 closed at this
 point



Lat Stake			
1450	91.33	91.32	F0.01
			F0.01
1425	90.56	90.48	F0.02
			F0.02
1400	89.67	89.73	C.0.06
Nly of J ST 0480	89.00	88.88	F0.12
Ely closed 0440	88.50	88.10	F0.40
	88.00	Meet 88.00	
0400 = spot J		ST closed Meet cbs	

J ST (closed)

0400 on facing page

INDEXED

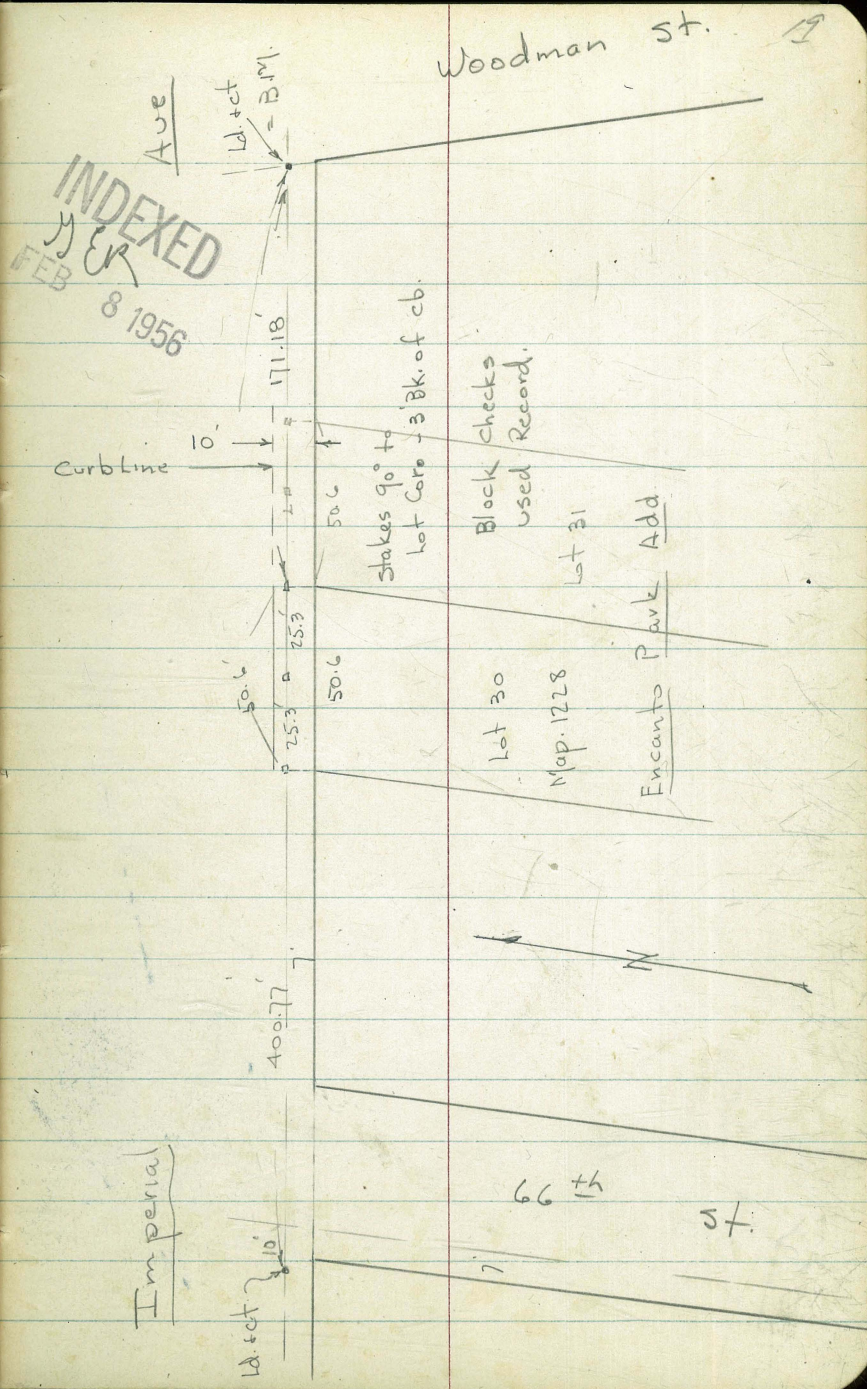
also 31
 Curb Stakes - lot 30 - Encanto Park Add.
 w.o. 200.07 1-27-56 7.0.
 T.P. Street 3244 Reset 2-7-56
 Profile 3225 See P. 2

0+00 = E.L. 66th

1+16.4	25.25	22.6.15 5.25	F0.90
1+41.7	26.13	26.62 1.3	F0.49
1+67	26.52	27.10 6.52	F0.58
1+90	26.87	27.53 8.7	F0.66
2+17.6	27.53	28.05 7.53	F0.52

B.M. = ct. W.L. Woodman
 + 5.7 Line Imperial
 (see sketch) 230.30

INDEXED
 y ER
 FEB 8 1956



Stake C65 @ 5268 Roswell St.
lot 24+25 BK 13 Beverly

WQ # 21007 20
D. Smith 10-5-54

Note Stake 3° BK of new cl. face.

end existing New curb

@ Roswell + Melrose Pl. 241~~46~~ used

64' wly to begin stakes

$\frac{-5}{0+00}$

234~~66~~

3334
F132

0+30

231~~47~~

3046
F101

0+60

228~~28~~

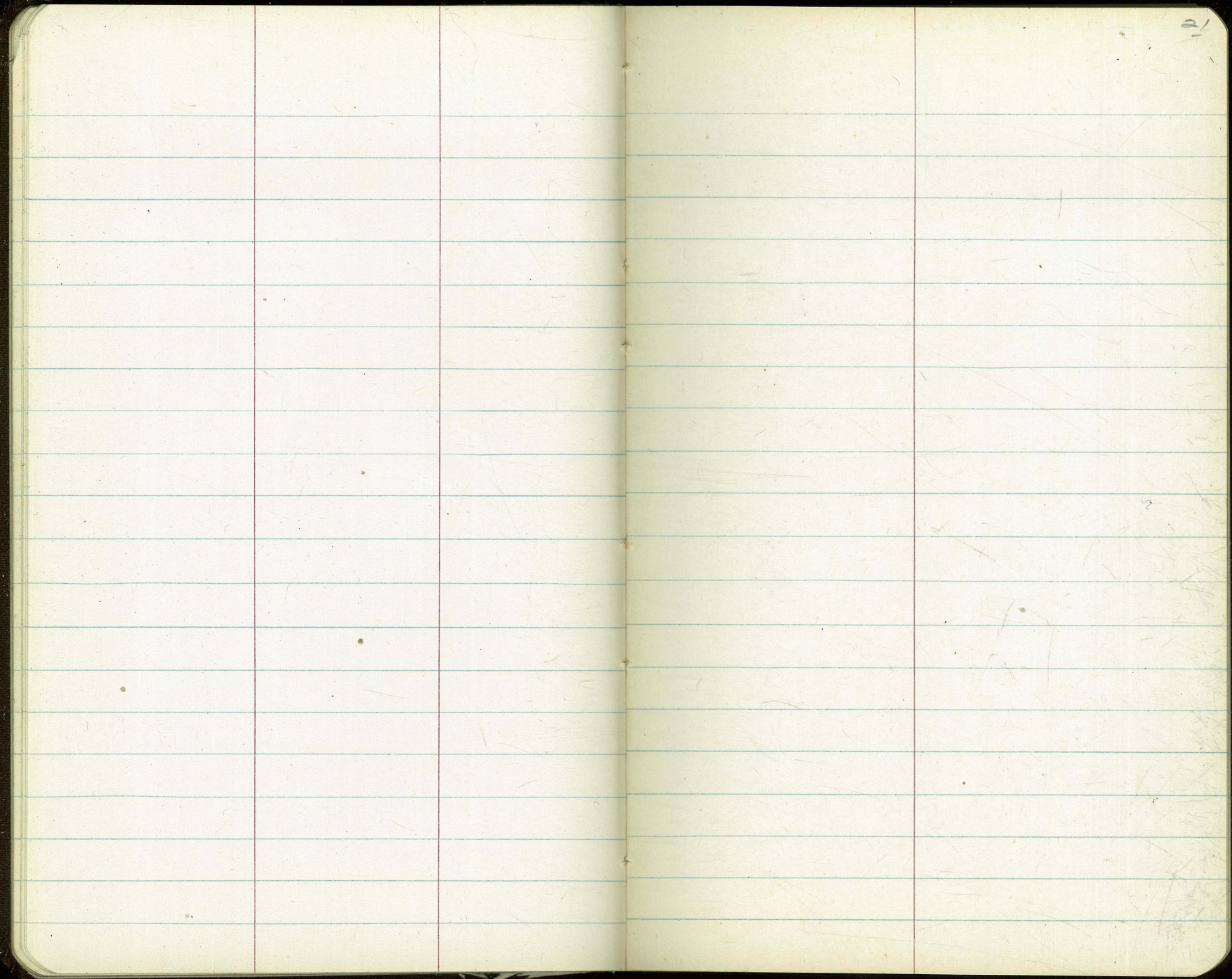
2720
F108

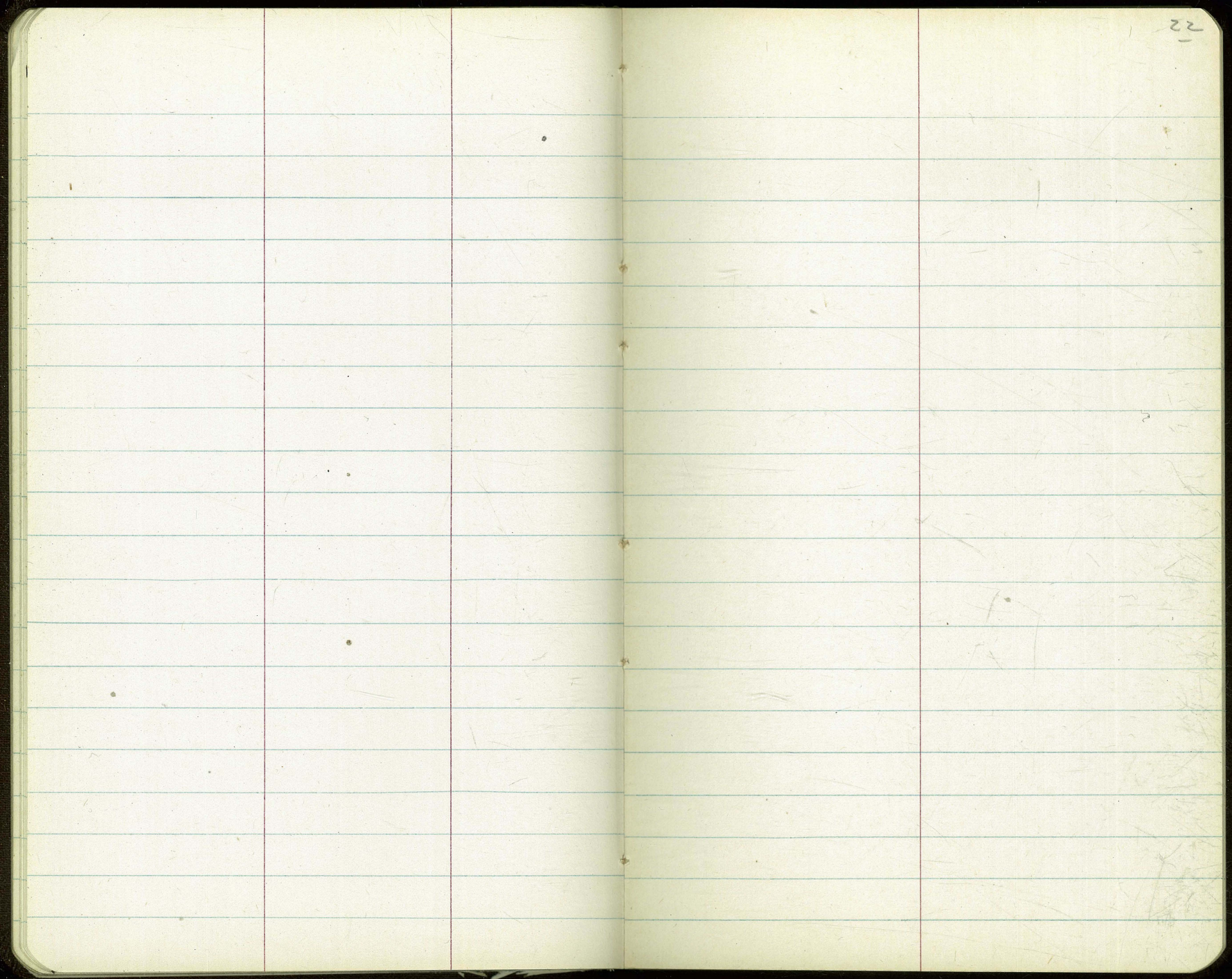
0+90 end c6

225~~09~~

2300
F149

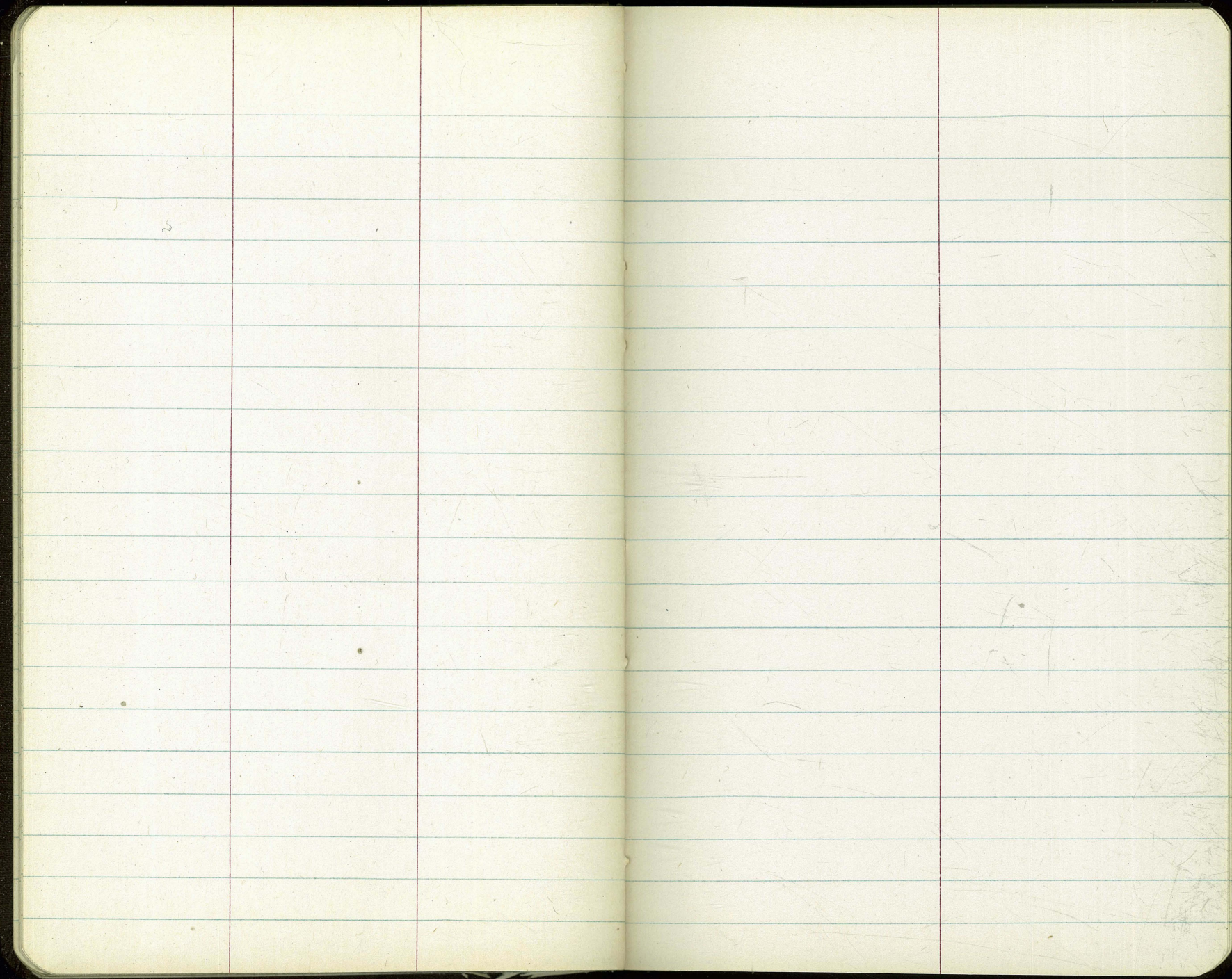
sta' run wly from start.





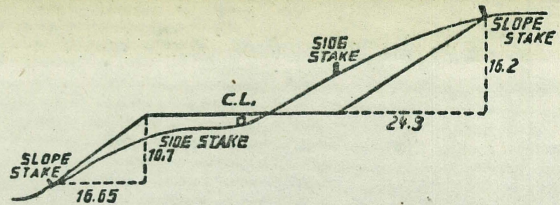
23

24



44288 Run Mt

N 450.90
S 450.54



DISTANCES FROM SIDE STAKES FOR CROSS-SECTIONING.
SLOPE 1 1/2 TO 1. ROADWAY OF ANY WIDTH.

	0	.1	.2	.3	.4	.5	.6	.7	.8	.9	
0	0.00	0.15	0.30	0.45	0.60	0.75	0.90	1.05	1.20	1.35	0
1	1.50	1.65	1.80	1.95	2.10	2.25	2.40	2.55	2.70	2.85	1
2	3.00	3.15	3.30	3.45	3.60	3.75	3.90	4.05	4.20	4.35	2
3	4.50	4.65	4.80	4.95	5.10	5.25	5.40	5.55	5.70	5.85	3
4	6.00	6.15	6.30	6.45	6.60	6.75	6.90	7.05	7.20	7.35	4
5	7.50	7.65	7.80	7.95	8.10	8.25	8.40	8.55	8.70	8.85	5
6	9.00	9.15	9.30	9.45	9.60	9.75	9.90	10.05	10.20	10.35	6
7	10.50	10.65	10.80	10.95	11.10	11.25	11.40	11.55	11.70	11.85	7
8	12.00	12.15	12.30	12.45	12.60	12.75	12.90	13.05	13.20	13.35	8
9	13.50	13.65	13.80	13.95	14.10	14.25	14.40	14.55	14.70	14.85	9
10	15.00	15.15	15.30	15.45	15.60	15.75	15.90	16.05	16.20	16.35	10
11	16.50	16.65	16.80	16.95	17.10	17.25	17.40	17.55	17.70	17.85	11
12	18.00	18.15	18.30	18.45	18.60	18.75	18.90	19.05	19.20	19.35	12
13	19.50	19.65	19.80	19.95	20.10	20.25	20.40	20.55	20.70	20.85	13
14	21.00	21.15	21.30	21.45	21.60	21.75	21.90	22.05	22.20	22.35	14
15	22.50	22.65	22.80	22.95	23.10	23.25	23.40	23.55	23.70	23.85	15
16	24.00	24.15	24.30	24.45	24.60	24.75	24.90	25.05	25.20	25.35	16
17	25.50	25.65	25.80	25.95	26.10	26.25	26.40	26.55	26.70	26.85	17
18	27.00	27.15	27.30	27.45	27.60	27.75	27.90	28.05	28.20	28.35	18
19	28.50	28.65	28.80	28.95	29.10	29.25	29.40	29.55	29.70	29.85	19
20	30.00	30.15	30.30	30.45	30.60	30.75	30.90	31.05	31.20	31.35	20
21	31.50	31.65	31.80	31.95	32.10	32.25	32.40	32.55	32.70	32.85	21
22	33.00	33.15	33.30	33.45	33.60	33.75	33.90	34.05	34.20	34.35	22
23	34.50	34.65	34.80	34.95	35.10	35.25	35.40	35.55	35.70	35.85	23
24	36.00	36.15	36.30	36.45	36.60	36.75	36.90	37.05	37.20	37.35	24
25	37.50	37.65	37.80	37.95	38.10	38.25	38.40	38.55	38.70	38.85	25
26	39.00	39.15	39.30	39.45	39.60	39.75	39.90	40.05	40.20	40.35	26
27	40.50	40.65	40.80	40.95	41.10	41.25	41.40	41.55	41.70	41.85	27
28	42.00	42.15	42.30	42.45	42.60	42.75	42.90	43.05	43.20	43.35	28
29	43.50	43.65	43.80	43.95	44.10	44.25	44.40	44.55	44.70	44.85	29
30	45.00	45.15	45.30	45.45	45.60	45.75	45.90	46.05	46.20	46.35	30
31	46.50	46.65	46.80	46.95	47.10	47.25	47.40	47.55	47.70	47.85	31
32	48.00	48.15	48.30	48.45	48.60	48.75	48.90	49.05	49.20	49.35	32
33	49.50	49.65	49.80	49.95	50.10	50.25	50.40	50.55	50.70	50.85	33
34	51.00	51.15	51.30	51.45	51.60	51.75	51.90	52.05	52.20	52.35	34
35	52.50	52.65	52.80	52.95	53.10	53.25	53.40	53.55	53.70	53.85	35
36	54.00	54.15	54.30	54.45	54.60	54.75	54.90	55.05	55.20	55.35	36
37	55.50	55.65	55.80	55.95	56.10	56.25	56.40	56.55	56.70	56.85	37
38	57.00	57.15	57.30	57.45	57.60	57.75	57.90	58.05	58.20	58.35	38
39	58.50	58.65	58.80	58.95	59.10	59.25	59.40	59.55	59.70	59.85	39
40	60.00	60.15	60.30	60.45	60.60	60.75	60.90	61.05	61.20	61.35	40
41	61.50	61.65	61.80	61.95	62.10	62.25	62.40	62.55	62.70	62.85	41
42	63.00	63.15	63.30	63.45	63.60	63.75	63.90	64.05	64.20	64.35	42
43	64.50	64.65	64.80	64.95	65.10	65.25	65.40	65.55	65.70	65.85	43
44	66.00	66.15	66.30	66.45	66.60	66.75	66.90	67.05	67.20	67.35	44
45	67.50	67.65	67.80	67.95	68.10	68.25	68.40	68.55	68.70	68.85	45
46	69.00	69.15	69.30	69.45	69.60	69.75	69.90	70.05	70.20	70.35	46
47	70.50	70.65	70.80	70.95	71.10	71.25	71.40	71.55	71.70	71.85	47
48	72.00	72.15	72.30	72.45	72.60	72.75	72.90	73.05	73.20	73.35	48
49	73.50	73.65	73.80	73.95	74.10	74.25	74.40	74.55	74.70	74.85	49
50	75.00	75.15	75.30	75.45	75.60	75.75	75.90	76.05	76.20	76.35	50

THE NATIONAL BLANK BOOK COMPANY
HOLYOKE MASSACHUSETTS
NEW YORK CHICAGO BOSTON SAN FRANCISCO