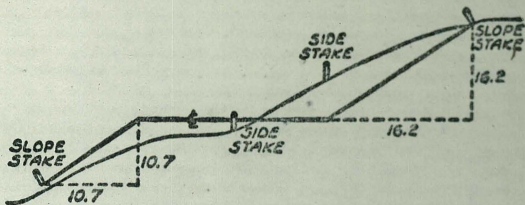


B-35

TRACET BOOK



DISTANCES FROM SIDE STAKES FOR CROSS-SECTIONING  
SLOPE 1 TO 1. ROADWAY OF ANY WIDTH

	0	.1	.2	.3	.4	.5	.6	.7	.8	.9	
0	0.00	0.10	0.20	0.30	0.40	0.50	0.60	0.70	0.80	0.90	0
1	1.00	1.10	1.20	1.30	1.40	1.50	1.60	1.70	1.80	1.90	1
2	2.00	2.10	2.20	2.30	2.40	2.50	2.60	2.70	2.80	2.90	2
3	3.00	3.10	3.20	3.30	3.40	3.50	3.60	3.70	3.80	3.90	3
4	4.00	4.10	4.20	4.30	4.40	4.50	4.60	4.70	4.80	4.90	4
5	5.00	5.10	5.20	5.30	5.40	5.50	5.60	5.70	5.80	5.90	5
6	6.00	6.10	6.20	6.30	6.40	6.50	6.60	6.70	6.80	6.90	6
7	7.00	7.10	7.20	7.30	7.40	7.50	7.60	7.70	7.80	7.90	7
8	8.00	8.10	8.20	8.30	8.40	8.50	8.60	8.70	8.80	8.90	8
9	9.00	9.10	9.20	9.30	9.40	9.50	9.60	9.70	9.80	9.90	9
10	10.00	10.10	10.20	10.30	10.40	10.50	10.60	10.70	10.80	10.90	10
11	11.00	11.10	11.20	11.30	11.40	11.50	11.60	11.70	11.80	11.90	11
12	12.00	12.10	12.20	12.30	12.40	12.50	12.60	12.70	12.80	12.90	12
13	13.00	13.10	13.20	13.30	13.40	13.50	13.60	13.70	13.80	13.90	13
14	14.00	14.10	14.20	14.30	14.40	14.50	14.60	14.70	14.80	14.90	14
15	15.00	15.10	15.20	15.30	15.40	15.50	15.60	15.70	15.80	15.90	15
16	16.00	16.10	16.20	16.30	16.40	16.50	16.60	16.70	16.80	16.90	16
17	17.00	17.10	17.20	17.30	17.40	17.50	17.60	17.70	17.80	17.90	17
18	18.00	18.10	18.20	18.30	18.40	18.50	18.60	18.70	18.80	18.90	18
19	19.00	19.10	19.20	19.30	19.40	19.50	19.60	19.70	19.80	19.90	19
20	20.00	20.10	20.20	20.30	20.40	20.50	20.60	20.70	20.80	20.90	20
21	21.00	21.10	21.20	21.30	21.40	21.50	21.60	21.70	21.80	21.90	21
22	22.00	22.10	22.20	22.30	22.40	22.50	22.60	22.70	22.80	22.90	22
23	23.00	23.10	23.20	23.30	23.40	23.50	23.60	23.70	23.80	23.90	23
24	24.00	24.10	24.20	24.30	24.40	24.50	24.60	24.70	24.80	24.90	24
25	25.00	25.10	25.20	25.30	25.40	25.50	25.60	25.70	25.80	25.90	25
26	26.00	26.10	26.20	26.30	26.40	26.50	26.60	26.70	26.80	26.90	26
27	27.00	27.10	27.20	27.30	27.40	27.50	27.60	27.70	27.80	27.90	27
28	28.00	28.10	28.20	28.30	28.40	28.50	28.60	28.70	28.80	28.90	28
29	29.00	29.10	29.20	29.30	29.40	29.50	29.60	29.70	29.80	29.90	29
30	30.00	30.10	30.20	30.30	30.40	30.50	30.60	30.70	30.80	30.90	30
31	31.00	31.10	31.20	31.30	31.40	31.50	31.60	31.70	31.80	31.90	31
32	32.00	32.10	32.20	32.30	32.40	32.50	32.60	32.70	32.80	32.90	32
33	33.00	33.10	33.20	33.30	33.40	33.50	33.60	33.70	33.80	33.90	33
34	34.00	34.10	34.20	34.30	34.40	34.50	34.60	34.70	34.80	34.90	34
35	35.00	35.10	35.20	35.30	35.40	35.50	35.60	35.70	35.80	35.90	35
36	36.00	36.10	36.20	36.30	36.40	36.50	36.60	36.70	36.80	36.90	36
37	37.00	37.10	37.20	37.30	37.40	37.50	37.60	37.70	37.80	37.90	37
38	38.00	38.10	38.20	38.30	38.40	38.50	38.60	38.70	38.80	38.90	38
39	39.00	39.10	39.20	39.30	39.40	39.50	39.60	39.70	39.80	39.90	39
40	40.00	40.10	40.20	40.30	40.40	40.50	40.60	40.70	40.80	40.90	40
41	41.00	41.10	41.20	41.30	41.40	41.50	41.60	41.70	41.80	41.90	41
42	42.00	42.10	42.20	42.30	42.40	42.50	42.60	42.70	42.80	42.90	42
43	43.00	43.10	43.20	43.30	43.40	43.50	43.60	43.70	43.80	43.90	43
44	44.00	44.10	44.20	44.30	44.40	44.50	44.60	44.70	44.80	44.90	44
45	45.00	45.10	45.20	45.30	45.40	45.50	45.60	45.70	45.80	45.90	45
46	46.00	46.10	46.20	46.30	46.40	46.50	46.60	46.70	46.80	46.90	46
47	47.00	47.10	47.20	47.30	47.40	47.50	47.60	47.70	47.80	47.90	47
48	48.00	48.10	48.20	48.30	48.40	48.50	48.60	48.70	48.80	48.90	48
49	49.00	49.10	49.20	49.30	49.40	49.50	49.60	49.70	49.80	49.90	49
50	50.00	50.10	50.20	50.30	50.40	50.50	50.60	50.70	50.80	50.90	50

Distance of slope stake from side or shoulder stake for any width roadway, slope 1 to 1. If ground is nearly level, the cut or fill at side stake is located by the double entry method in left column and top row. The number in body of table in same row and column gives distance from side stake to slope stake. If ground is not level estimate the difference in elevation between the side stake and slope stake, lower target by this amount if cut, elevate if fill. Add this amount to cut or fill and find distance in table. Set up rod at this point, and line of sight should cut target. If it does not make the slight adjustment necessary.

INDEX

E. TECOLOTE RI

5

Lots. 21-22-23-24 25 B1K 235.

Pacific Beach 5/5/53

C.H.S. Ingraham & Grand

Boeg  
Schelin T.P. sheet # 1619

profile # 1173  
# 1202

Stakes set 3' back of cl. face.

Grades from profiles 1173 + 1202

~~R.M. - N.E. B.R. Grand + Ingraham 55.85~~

~~SE. B.A. Garnot + Ingraham 62.60~~

B.M. S.W. 7' L.H. Garnot + Jewell 68.90

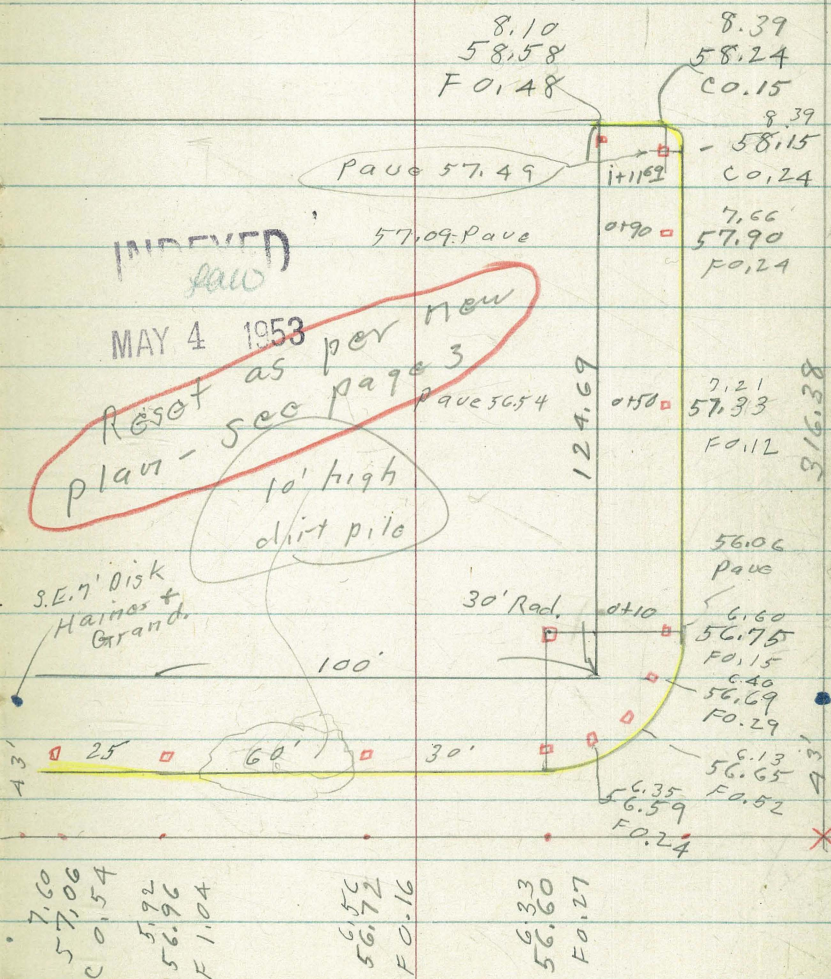
Set B.M. S.E. 7' L.H. " + Ingraham 62.72

Note changed to meet  
sheet 7015-A-L 5/7/53

see page 3

PERMIT NO. 113107  
CONTR. Western Service Group  
OWNER Gen'l. Patterson Co.  
21<sup>st</sup> 25<sup>th</sup> B1K 235 ADD. Pac. Beach

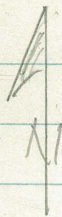
← Hornblend



see next page

BIK 235 Pac. Beach  
Lots 21-22-23-24+25

Restake 5/7/53



BIK 235  
P. B.

25 24 23 22 21

El. w/ Rad 1/2

56.81

R=20

0+10 F0.15

0+50 F0.03

0+90 F0.10

1+11.69 C-0.24

Page 2

Ingraham

6.32  
56.61  
F0.29

C-0.02  
56.58  
F0.56

5.98  
56.54  
F0.56

26.25  
56.50  
F0.25

This portion  
Not to be  
constructed

Grand

D. Smith  
J. Rorer  
R. Taylor  
B. Fish

Stake Curbs

INDEXED

HER

JAN 8 1954

Island Ave

WOT 20007  
11/7/54

1st St.

Fd 5x7' Lot  
SW cor

4

F039 774 813 2400

Begin  
cb dove tailed to  
PAYING

Note set PK nails 3' BKcb face

F045 754 799 1775

F043 742 785 1750

F044 727 771 1425

F029 728 757 1400

F035 708 743 0775

F042 687 729 0450

Island Ave.

F034 681 715 0425

← 14' obs

0200

ch. 700

Fd 7x7' Lot

BM

623 SWBP  
Island  
2201

2nd St

Clark

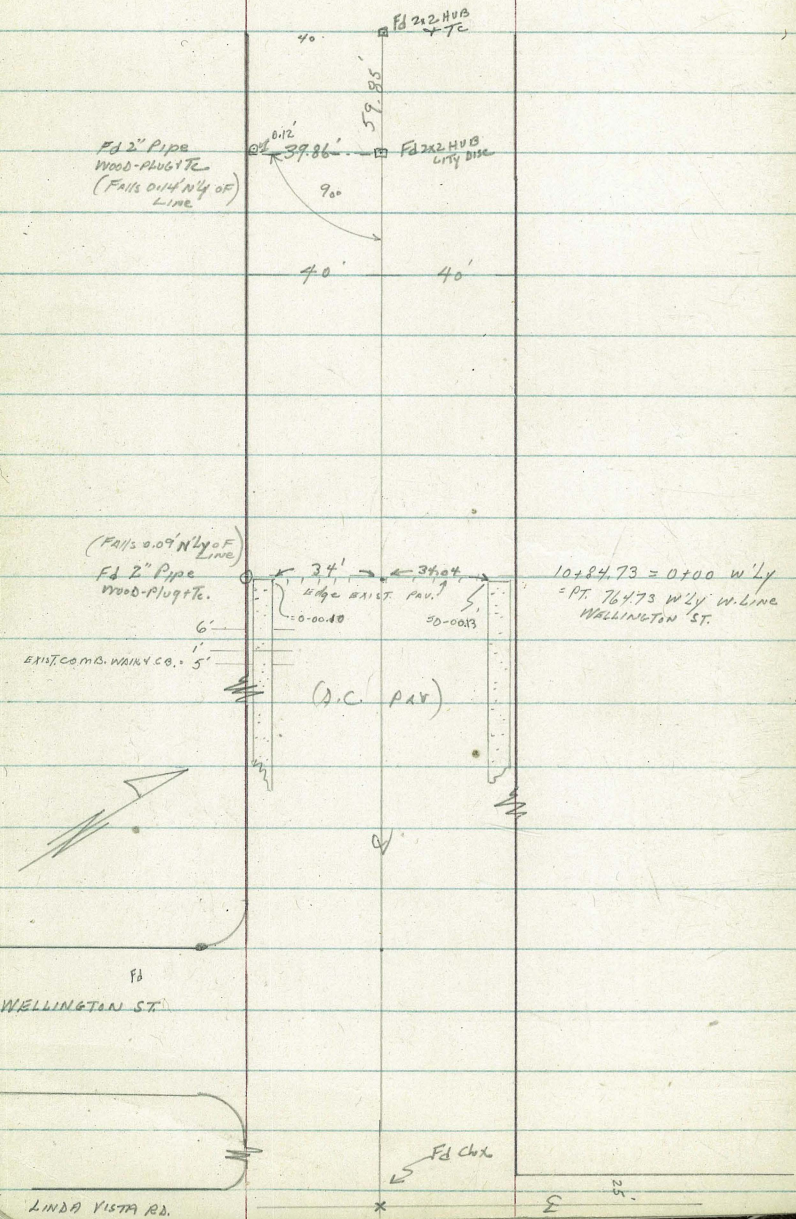
STREET GRADES (NO CB'S) E TECOLOTE RD  
 FROM PT 764.73 N'44° OF W. LINE WELLINGTON RD TO  
 & PT 1464.73 W'LY OF W. LINE " " "

3-15-55  
 W.O. 20638

REF: P.B. # 2136  
 DWS: 5566-B  
 " 9174-L

Note: Grades also  
 shown G-321-60

5



STA.	Prop.	LT.	E	CB.	Prop	DT. (N'44)
2+00	361.24					361.24
1+68 =	BC. DR. LT.				361.44	
1+53.7 =	END CABT Prop.				361.73	
(1+48 =	E.C. DRIVE LT.)					
1+50	PT. ONLY					361.54
1+36 =	E. DRIVE LT.					
1+24 =	E.C. DR. LT.)				361.93	
1+18.3 =	END CABT Prop.					
1+04 =	AC. DRIVE LT.				361.82	
1+00					361.84	361.84
0+50					362.14	362.14
	CHK 362.41					CHK 362.41
	0+00 = END EXIST. CONST.				362.44 = Elev. EXIST	Elev. EXIST 362.44
	Note: Grade Stubs set ON Prop. Line & REFER to T.C. elev's:					
	B.M.	Dir. Elev. Rod:				356.61 = DISC ELIND VISTA RD AT SL PL 1203

E. TACOLATE RD. (CONT.)

STA.	LT.		RT (N'LY)		STA.	LT.		RT (N'LY)	
	Prop.	CB	Prop	CB		Prop.	CB	Prop.	CB
5+50 RT only			354.10						
5+44 = B.C. Drive LT.	354.29				8+50		348.11		348.11
5+00	355.60		355.60		8+00		348.61		348.61
4+50	357.10		357.10		7+50		349.11		349.11
4+40 = B.V.C	357.40		357.40		7+00	END 80' Rd-way grading	349.61		349.61
4+00	358.50		358.50		6+50		351.10		351.10
3+60	359.42		359.42		6+08 = B.C. on LT.		352.37		
					6+00 RT only				352.60
3+20	360.14		360.14		5+93.7 = END CB (5+88 = E.C) AT Prop		352.92		
2+80	360.66		360.66		(5+64 = E.C)				
					5+58.3 = END CB AT Prop		354.06		
2+40 = B.V.C	361.00		361.00						

(Grade for drainage)  
 on 1/2 grade from 7+00



Roberts } Grade Stakes For 100' of Curb  
 Rorer } at 4195 National Avenue (36<sup>th</sup> Rdwy)  
 Moore } Grades to match existing  
 Morales } Pavement. The above data  
 3-15-56 }  
 W.O.# 20018 } was given by Ed. G.

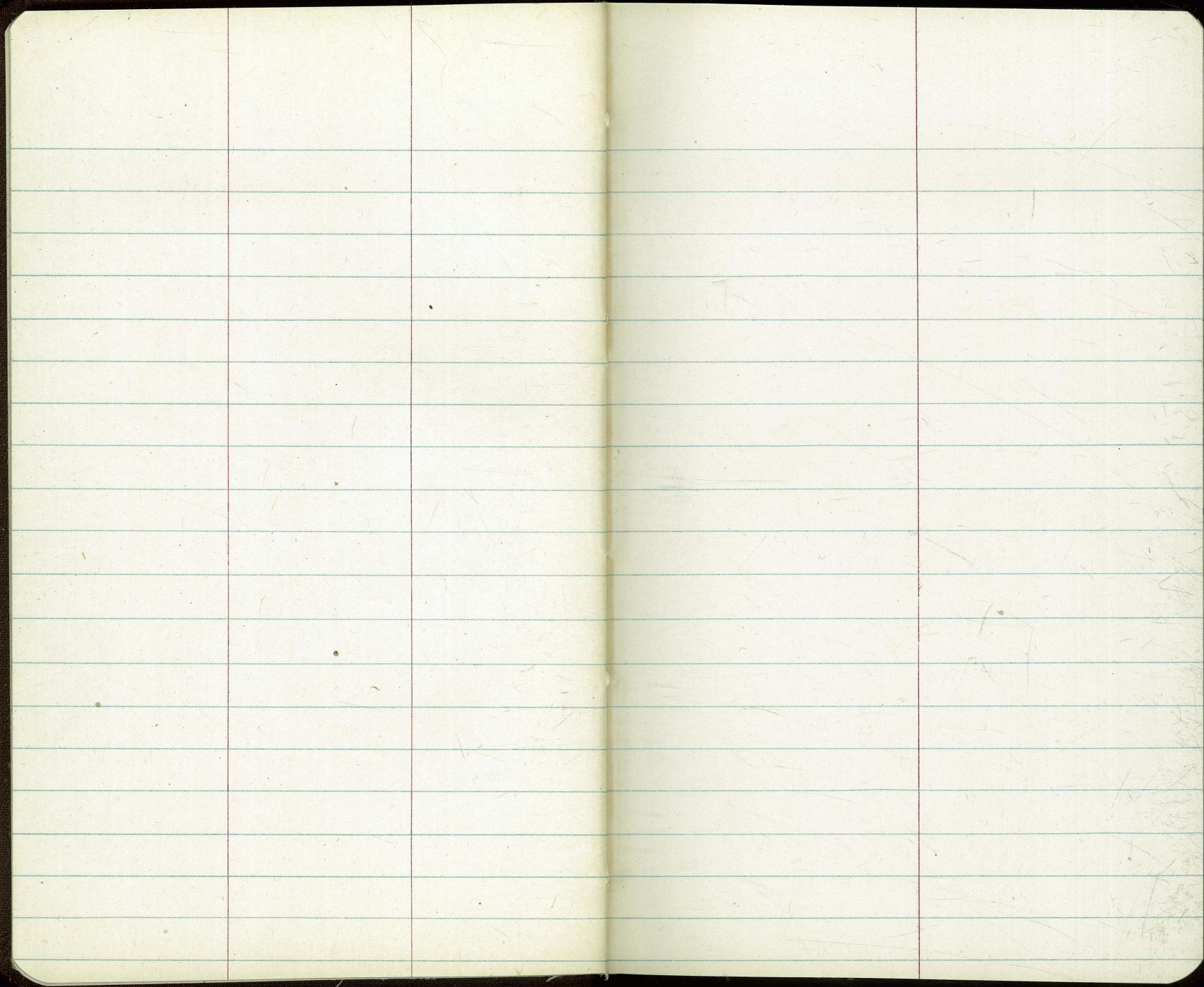
1+00  
 36.57  
 36.43  
 C 0.14

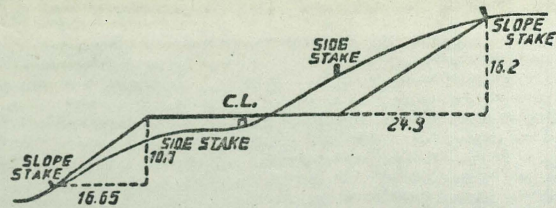
0+75  
 38.24  
 37.94  
 C 0.30

0+50  
 39.95  
 39.45  
 C 0.50

0+25  
 41.52  
 40.96  
 C 0.56

0+00 (450.5 west of E 43<sup>rd</sup> St)  
 42.60  
 42.47  
 C 0.13





**DISTANCES FROM SIDE STAKES FOR CROSS-SECTIONING.**  
**SLOPE 1 1/2 TO 1. ROADWAY OF ANY WIDTH.**

	0	.1	.2	.3	.4	.5	.6	.7	.8	.9	
0	0.00	0.15	0.30	0.45	0.60	0.75	0.90	1.05	1.20	1.35	0
1	1.50	1.65	1.80	1.95	2.10	2.25	2.40	2.55	2.70	2.85	1
2	3.00	3.15	3.30	3.45	3.60	3.75	3.90	4.05	4.20	4.35	2
3	4.50	4.65	4.80	4.95	5.10	5.25	5.40	5.55	5.70	5.85	3
4	6.00	6.15	6.30	6.45	6.60	6.75	6.90	7.05	7.20	7.35	4
5	7.50	7.65	7.80	7.95	8.10	8.25	8.40	8.55	8.70	8.85	5
6	9.00	9.15	9.30	9.45	9.60	9.75	9.90	10.05	10.20	10.35	6
7	10.50	10.65	10.80	10.95	11.10	11.25	11.40	11.55	11.70	11.85	7
8	12.00	12.15	12.30	12.45	12.60	12.75	12.90	13.05	13.20	13.35	8
9	13.50	13.65	13.80	13.95	14.10	14.25	14.40	14.55	14.70	14.85	9
10	15.00	15.15	15.30	15.45	15.60	15.75	15.90	16.05	16.20	16.35	10
11	16.50	16.65	16.80	16.95	17.10	17.25	17.40	17.55	17.70	17.85	11
12	18.00	18.15	18.30	18.45	18.60	18.75	18.90	19.05	19.20	19.35	12
13	19.50	19.65	19.80	19.95	20.10	20.25	20.40	20.55	20.70	20.85	13
14	21.00	21.15	21.30	21.45	21.60	21.75	21.90	22.05	22.20	22.35	14
15	22.50	22.65	22.80	22.95	23.10	23.25	23.40	23.55	23.70	23.85	15
16	24.00	24.15	24.30	24.45	24.60	24.75	24.90	25.05	25.20	25.35	16
17	25.50	25.65	25.80	25.95	26.10	26.25	26.40	26.55	26.70	26.85	17
18	27.00	27.15	27.30	27.45	27.60	27.75	27.90	28.05	28.20	28.35	18
19	28.50	28.65	28.80	28.95	29.10	29.25	29.40	29.55	29.70	29.85	19
20	30.00	30.15	30.30	30.45	30.60	30.75	30.90	31.05	31.20	31.35	20
21	31.50	31.65	31.80	31.95	32.10	32.25	32.40	32.55	32.70	32.85	21
22	33.00	33.15	33.30	33.45	33.60	33.75	33.90	34.05	34.20	34.35	22
23	34.50	34.65	34.80	34.95	35.10	35.25	35.40	35.55	35.70	35.85	23
24	36.00	36.15	36.30	36.45	36.60	36.75	36.90	37.05	37.20	37.35	24
25	37.50	37.65	37.80	37.95	38.10	38.25	38.40	38.55	38.70	38.85	25
26	39.00	39.15	39.30	39.45	39.60	39.75	39.90	40.05	40.20	40.35	26
27	40.50	40.65	40.80	40.95	41.10	41.25	41.40	41.55	41.70	41.85	27
28	42.00	42.15	42.30	42.45	42.60	42.75	42.90	43.05	43.20	43.35	28
29	43.50	43.65	43.80	43.95	44.10	44.25	44.40	44.55	44.70	44.85	29
30	45.00	45.15	45.30	45.45	45.60	45.75	45.90	46.05	46.20	46.35	30
31	46.50	46.65	46.80	46.95	47.10	47.25	47.40	47.55	47.70	47.85	31
32	48.00	48.15	48.30	48.45	48.60	48.75	48.90	49.05	49.20	49.35	32
33	49.50	49.65	49.80	49.95	50.10	50.25	50.40	50.55	50.70	50.85	33
34	51.00	51.15	51.30	51.45	51.60	51.75	51.90	52.05	52.20	52.35	34
35	52.50	52.65	52.80	52.95	53.10	53.25	53.40	53.55	53.70	53.85	35
36	54.00	54.15	54.30	54.45	54.60	54.75	54.90	55.05	55.20	55.35	36
37	55.50	55.65	55.80	55.95	56.10	56.25	56.40	56.55	56.70	56.85	37
38	57.00	57.15	57.30	57.45	57.60	57.75	57.90	58.05	58.20	58.35	38
39	58.50	58.65	58.80	58.95	59.10	59.25	59.40	59.55	59.70	59.85	39
40	60.00	60.15	60.30	60.45	60.60	60.75	60.90	61.05	61.20	61.35	40
41	61.50	61.65	61.80	61.95	62.10	62.25	62.40	62.55	62.70	62.85	41
42	63.00	63.15	63.30	63.45	63.60	63.75	63.90	64.05	64.20	64.35	42
43	64.50	64.65	64.80	64.95	65.10	65.25	65.40	65.55	65.70	65.85	43
44	66.00	66.15	66.30	66.45	66.60	66.75	66.90	67.05	67.20	67.35	44
45	67.50	67.65	67.80	67.95	68.10	68.25	68.40	68.55	68.70	68.85	45
46	69.00	69.15	69.30	69.45	69.60	69.75	69.90	70.05	70.20	70.35	46
47	70.50	70.65	70.80	70.95	71.10	71.25	71.40	71.55	71.70	71.85	47
48	72.00	72.15	72.30	72.45	72.60	72.75	72.90	73.05	73.20	73.35	48
49	73.50	73.65	73.80	73.95	74.10	74.25	74.40	74.55	74.70	74.85	49
50	75.00	75.15	75.30	75.45	75.60	75.75	75.90	76.05	76.20	76.35	50

THE NATIONAL BLANK BOOK COMPANY  
 HOLYOKE MASSACHUSETTS  
 NEW YORK CHICAGO BOSTON SAN FRANCISCO