

T. P. BOOK #II
DESCRIPTION

ITEM	DESCRIPTION	PAGE
1.	13 th. Street National Avenue to Newton Avenue	I.
2.	13 th. Street at Newton Avenue	I.
3.	14 th. Street Imperial Avenue to Commercial Avenue	I.
4.	14 th. Street at National Avenue	I.
5.	16 th. Street at Commercial Avenue at Logan Avenue	2-3.
6.	17 th. Street Commercial Avenue to Logan Avenue	3.
7.	18 th. Street at Commercial Avenue at Kearney Avenue	3.

ITEM	T. P. BOOK #II DESCRIPTION	2 of 4 PAGE
8.	19 th. Street Commercial Avenue to Kearney Avenue	3.
9.	21 st. Street Commercial Avenue to Julian Avenue	4.
10.	22 nd. Street Commercial Avenue to Beardsley Street	4.
11.	24 th. Street at Commercial Avenue	4.
12.	Commercial Avenue at Beardsley Street at Harrison Avenue	4.
13.	Harrison Avenue near Commercial Avenue	5.

ITEM	T. P. BOOK #II DESCRIPTION	3 of 4 PAGE
15.	Commercial Avenue near Dewey Street near Franklin Avenue	6.
16.	Commercial Avenue 27 th. Street to Hensley Street	6.
17.	Evans Street Commercial Avenue to Everett Avenue	6.
18.	28 th. Street Commercial Avenue to Webster Avenue	7.
19.	28 th. Street Everett Avenue to Commercial Avenue	9.
20.	Survey of area surrounded by Richmond Avenue	70.

T. P. BOOK #11 4 of 4
ITEM DESCRIPTION PAGE
21. La Jolla R. Track, location
of.
Girard Avenue at
Silverado Street 71.

II

The Points,
"N" St.

28th St.

T.P. II

#1 - INDEX - T. P. 11

LOCATION	PAGE No.
COMMERCIAL ST.	1, 7
NATIONAL AVE.	1, 2
13 ST.	1
14 ST.	1
15 ST.	2
16 ST.	2-3
17 ST.	3
18 ST.	3
19 ST.	3
20 ST.	4
21 ST.	4
22 ST.	4
24 ST.	4
27 ST.	6
28 ST.	7, 9, 10
LOGAN AVE.	3
KEARNY	3
SIGSBEE	3, 13
JULIAN	4
BEARDSLEY	4, 13
HARRISON	5
CROSBY	5
N ST.	5
GRANT	5
FRANKLIN	6, 10
HENSLEY	6
EVANS	6, 13
DEWEY	6, 13
EVERETT AVE.	6, 9, 10
WALLEY PL.	7
WEBSTER	7, 9

#2 - INDEX - T. P. 11

LOCATION	PAGE No.
SAMPSON	10, 13
CLAY	10
CROSBY	13
PIERCE AVE.	13
<hr/>	
LINCOLN AVE.	70
RICHMOND ST.	70
CLEVELAND AVE	70
<hr/>	
SILVERADO ST.	71
GIRARD ST.	71

72.83
36.415

INDEXED

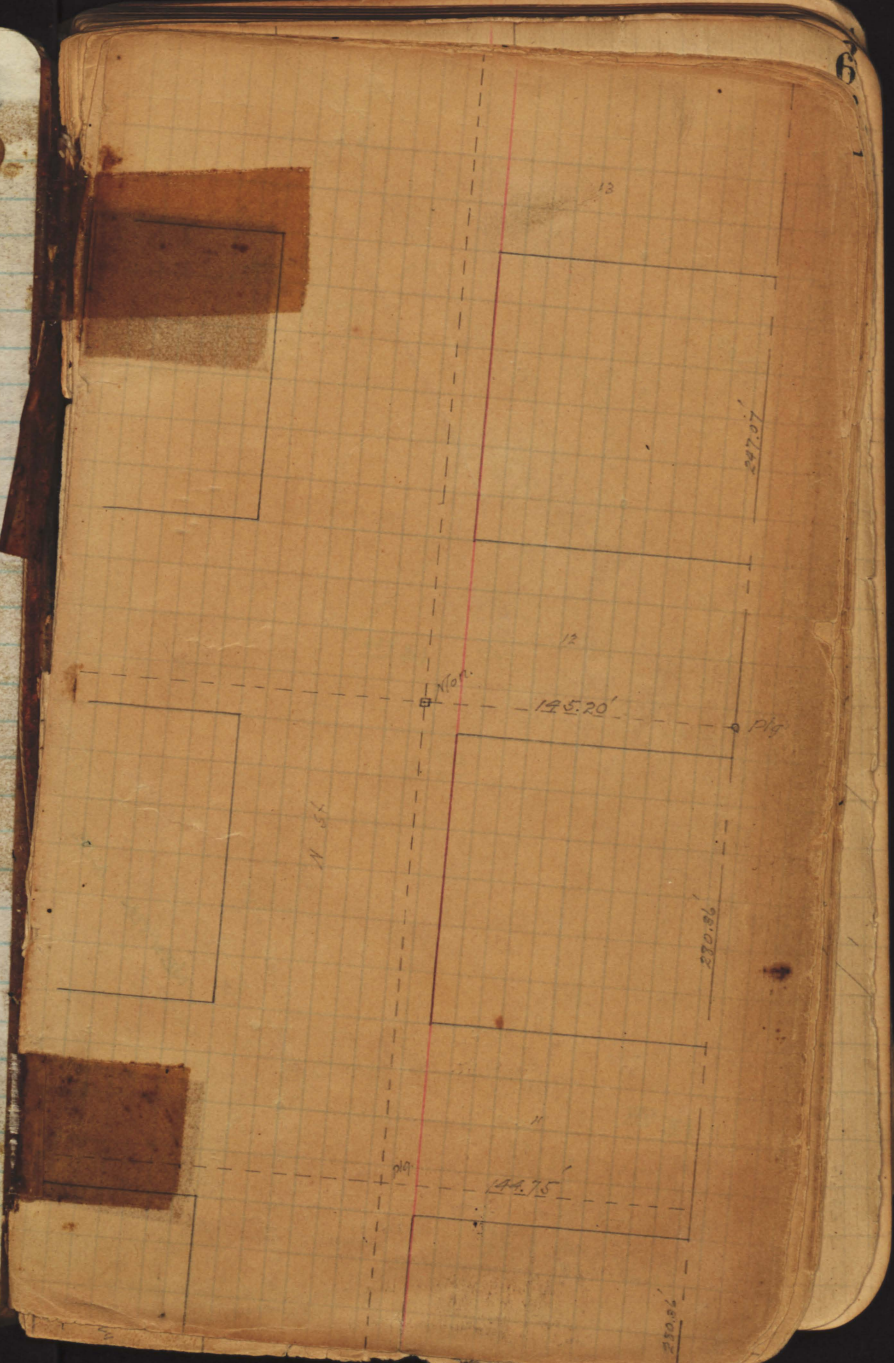
INDEX - P. 11

Page No.	Address
1	SAMPSON ST. 100
2	CLAY ST. 100
3	CROSBY ST. 13.75
4	WIERCE AVE. 13.75
5	WIERCE AVE. 13.75
6	WIERCE AVE. 13.75
7	WIERCE AVE. 13.75
8	WIERCE AVE. 13.75
9	WIERCE AVE. 13.75
10	WIERCE AVE. 13.75
11	WIERCE AVE. 13.75
12	WIERCE AVE. 13.75
13	WIERCE AVE. 13.75
14	WIERCE AVE. 13.75
15	WIERCE AVE. 13.75
16	WIERCE AVE. 13.75
17	WIERCE AVE. 13.75
18	WIERCE AVE. 13.75
19	WIERCE AVE. 13.75
20	WIERCE AVE. 13.75
21	WIERCE AVE. 13.75
22	WIERCE AVE. 13.75
23	WIERCE AVE. 13.75
24	WIERCE AVE. 13.75
25	WIERCE AVE. 13.75
26	WIERCE AVE. 13.75
27	WIERCE AVE. 13.75
28	WIERCE AVE. 13.75
29	WIERCE AVE. 13.75
30	WIERCE AVE. 13.75
31	WIERCE AVE. 13.75
32	WIERCE AVE. 13.75
33	WIERCE AVE. 13.75
34	WIERCE AVE. 13.75
35	WIERCE AVE. 13.75
36	WIERCE AVE. 13.75
37	WIERCE AVE. 13.75
38	WIERCE AVE. 13.75
39	WIERCE AVE. 13.75
40	WIERCE AVE. 13.75
41	WIERCE AVE. 13.75
42	WIERCE AVE. 13.75
43	WIERCE AVE. 13.75
44	WIERCE AVE. 13.75
45	WIERCE AVE. 13.75
46	WIERCE AVE. 13.75
47	WIERCE AVE. 13.75
48	WIERCE AVE. 13.75
49	WIERCE AVE. 13.75
50	WIERCE AVE. 13.75
51	WIERCE AVE. 13.75
52	WIERCE AVE. 13.75
53	WIERCE AVE. 13.75
54	WIERCE AVE. 13.75
55	WIERCE AVE. 13.75
56	WIERCE AVE. 13.75
57	WIERCE AVE. 13.75
58	WIERCE AVE. 13.75
59	WIERCE AVE. 13.75
60	WIERCE AVE. 13.75
61	WIERCE AVE. 13.75
62	WIERCE AVE. 13.75
63	WIERCE AVE. 13.75
64	WIERCE AVE. 13.75
65	WIERCE AVE. 13.75
66	WIERCE AVE. 13.75
67	WIERCE AVE. 13.75
68	WIERCE AVE. 13.75
69	WIERCE AVE. 13.75
70	WIERCE AVE. 13.75
71	WIERCE AVE. 13.75
72	WIERCE AVE. 13.75
73	WIERCE AVE. 13.75
74	WIERCE AVE. 13.75
75	WIERCE AVE. 13.75
76	WIERCE AVE. 13.75
77	WIERCE AVE. 13.75
78	WIERCE AVE. 13.75
79	WIERCE AVE. 13.75
80	WIERCE AVE. 13.75
81	WIERCE AVE. 13.75
82	WIERCE AVE. 13.75
83	WIERCE AVE. 13.75
84	WIERCE AVE. 13.75
85	WIERCE AVE. 13.75
86	WIERCE AVE. 13.75
87	WIERCE AVE. 13.75
88	WIERCE AVE. 13.75
89	WIERCE AVE. 13.75
90	WIERCE AVE. 13.75
91	WIERCE AVE. 13.75
92	WIERCE AVE. 13.75
93	WIERCE AVE. 13.75
94	WIERCE AVE. 13.75
95	WIERCE AVE. 13.75
96	WIERCE AVE. 13.75
97	WIERCE AVE. 13.75
98	WIERCE AVE. 13.75
99	WIERCE AVE. 13.75
100	WIERCE AVE. 13.75

except page #8,

INDEXED

to page #13



COMMERCIAL

AVE

(1.6)

Mon

10

9

14370

200.88

7

WAB

Cap Tank

438.75'

Hub

215.99

COMMERCIAL AVE ?

COMMERCIAL

INDEXED
SEP 22 1950

238.64
266.54

7/12/50
AR

Thermans
Chubb

210.01'

Hub

Wheats
Chubb

330.57' Mon

94.74
8.57
103.35

See Page 3

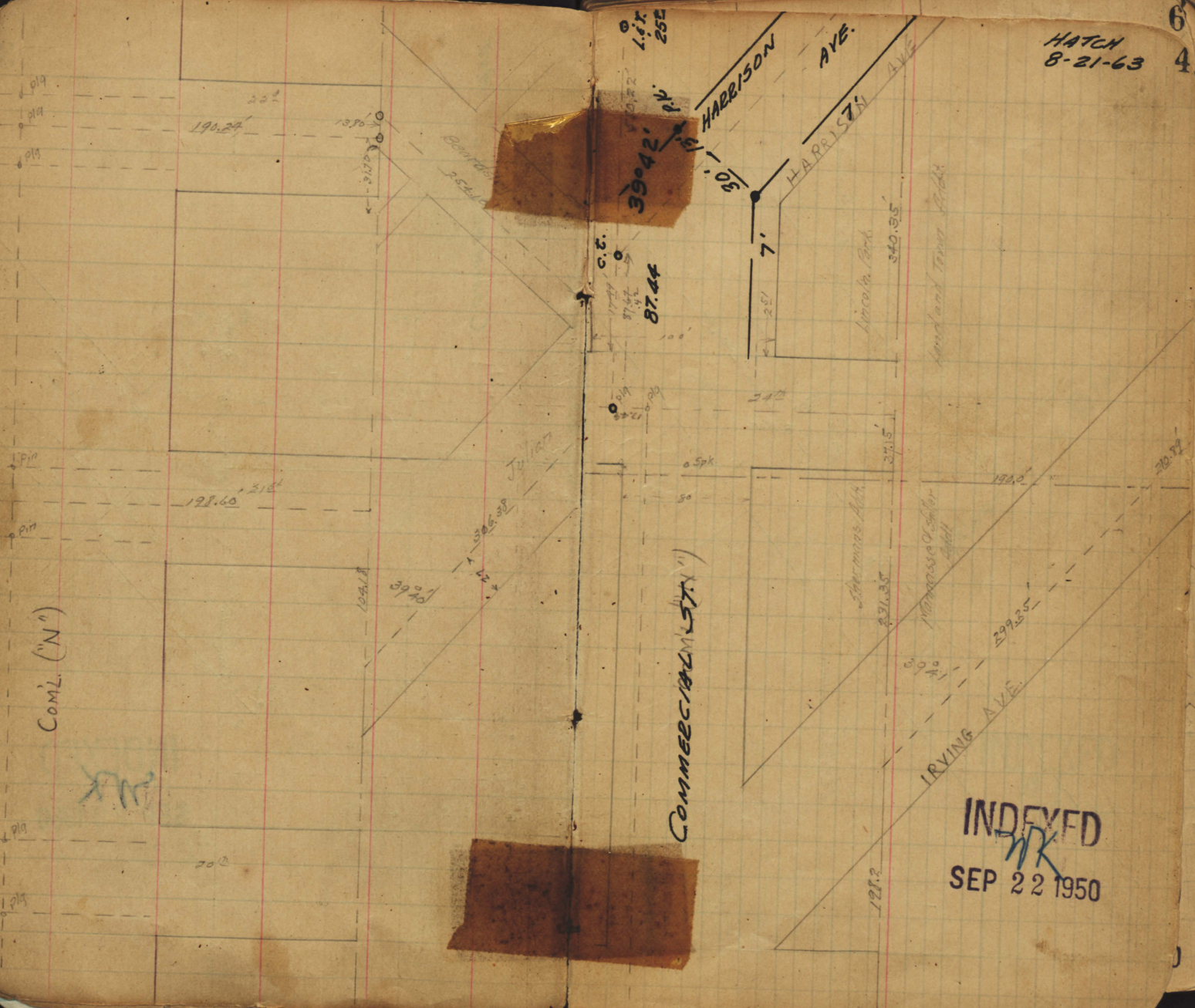
10
299.18' Mon

2

6

8.57

HATCH
8-21-63

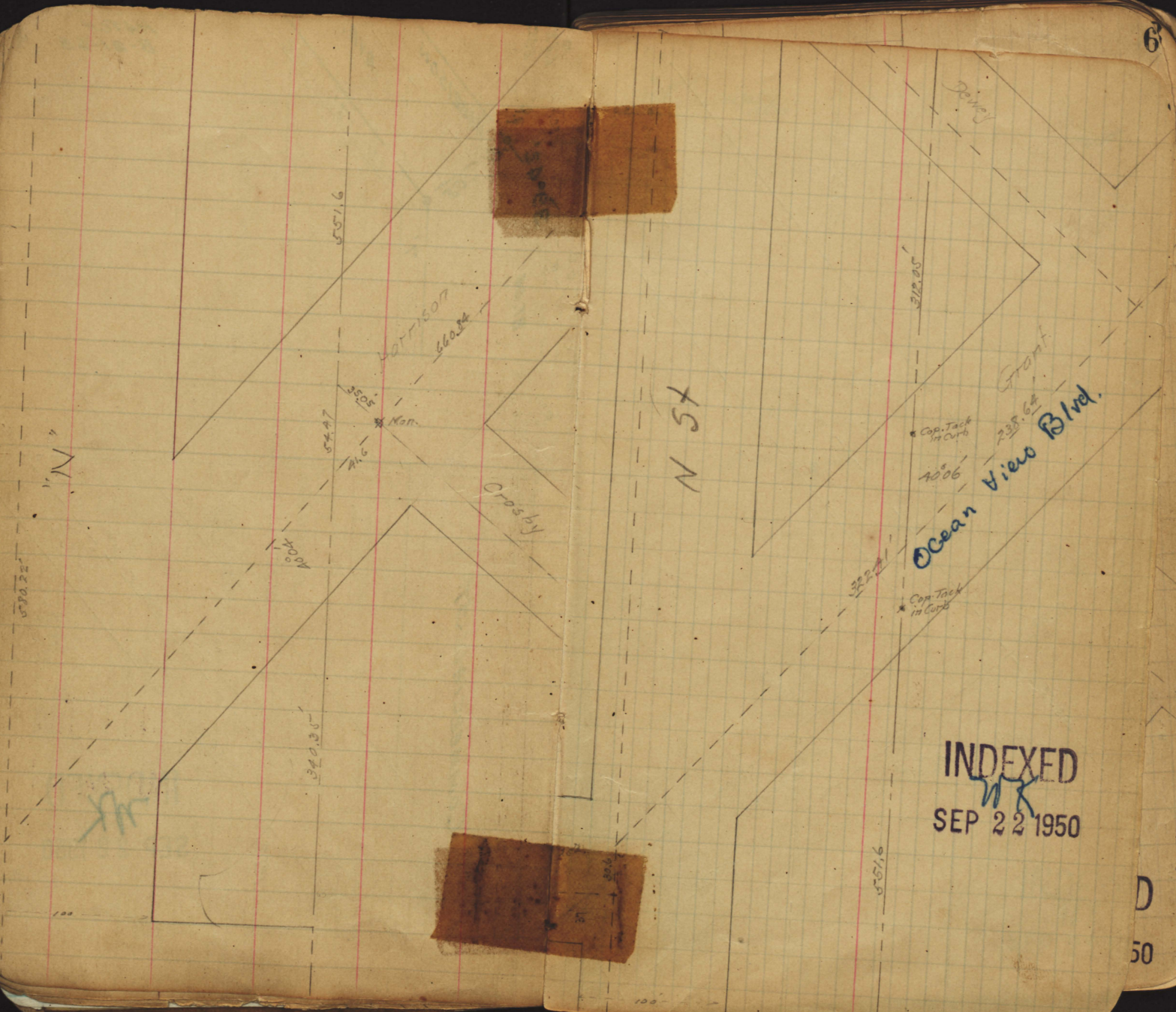


COML (N°)

JK

CONVEYANCE

INDEXED
SEP 22 1950



INDEXED
 MK
 SEP 22 1950

COMMERCIAL

1950

0.60

Mon

23994

Commercial

JK

195.67

Sum. Fl. Cot. L.P. in Mark 3-30-50
[Revised] C.T. L.P. in Mark 3-30-50

5.05
C.J.

188.22

46.00

39.30

Welly Pl

28th St

39.30

0.7

0.66

0.7

0.7

0.7

0.7

0.7

0.7

0.7

0.7

0.7

147.00

0.7

0.7

0.7

0.7

0.7

0.7

0.7

0.7

0.7

0.7

Webster

INDEXED
SEP 22 1950



SEP 23 1933
KX

28th Street

188.22

127.40
5105
195.67

Replaced C.T. L.P.
th Walk 3-30-51

147.00

INDEXED

SEP 22 1950

Webster

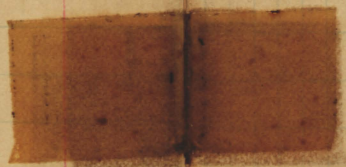
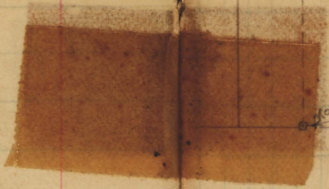
Everett

AVE

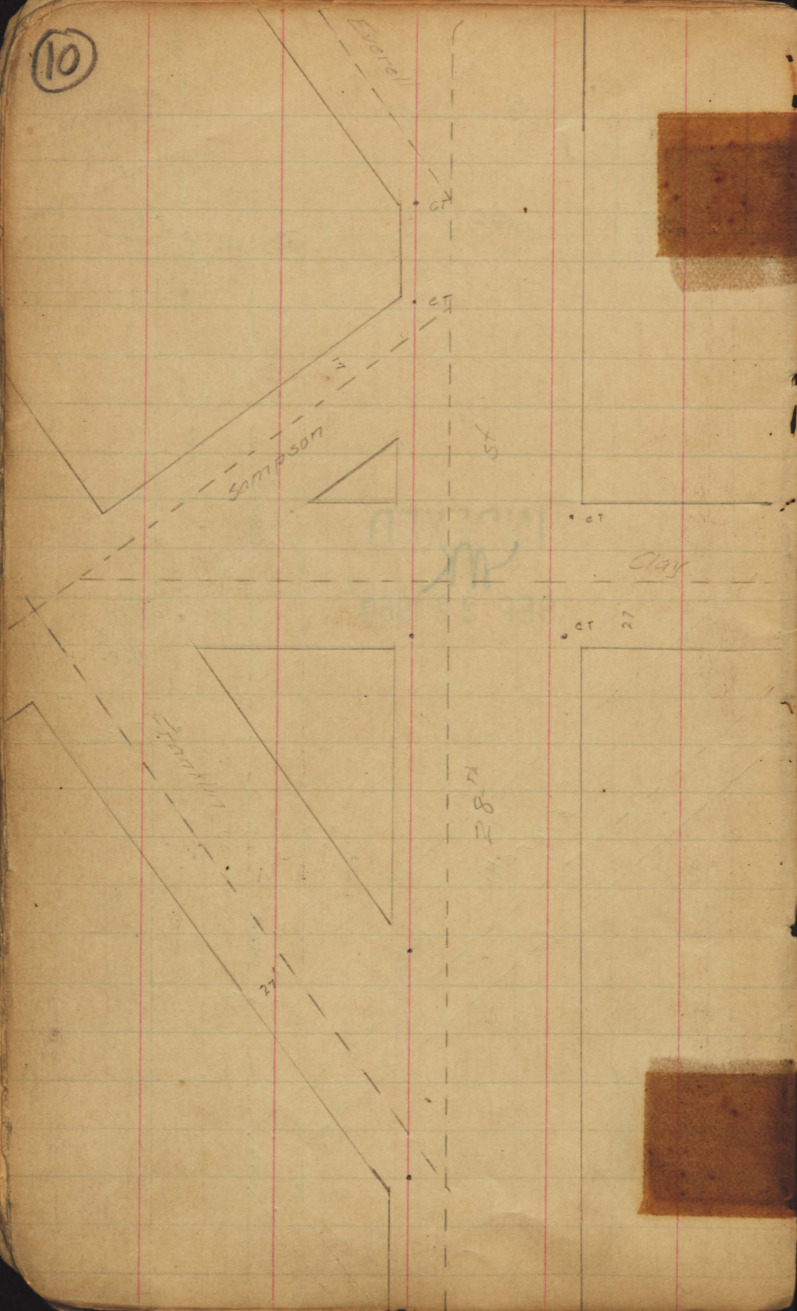
50° 18'

4.10' C.T.
1785'

488.4



10



INDEXED
SEP 22 1950



Indexed
by Birch
7-17-50

Crosby

Beardsley

Fierce Ave

Sigsbee

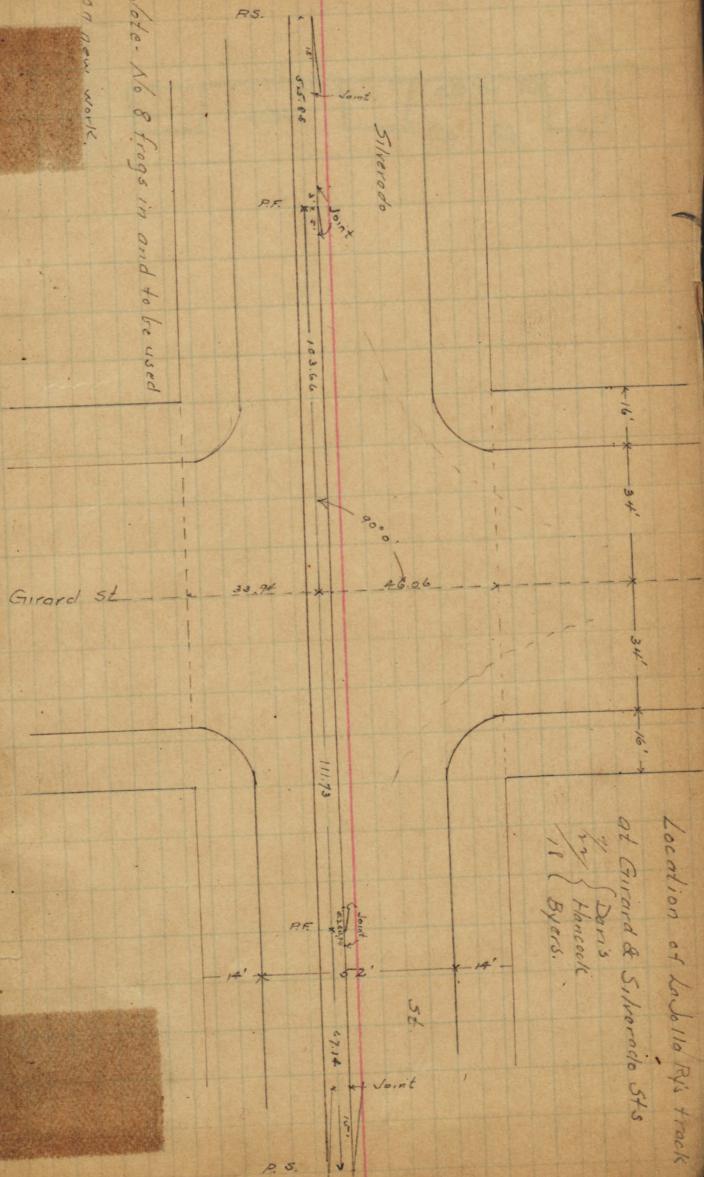
Sampson

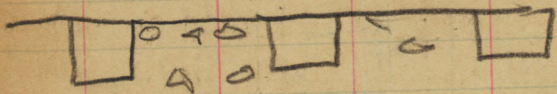
Evans

INDEXED
MK
SEP 22 1950

Dewey

Note - No 8 frogs in and to be used
on new work.





out gutter 3 x 5 C. 13
out framing 1' + 1 1/2' 44 x 300.

out 3.0 sq ft 44 x 300

J + H

out 3.0 sq ft

43.7 x 200

E + F

out 1.0 sq ft

43.9 x 200

D + E

out 3 x 5 BB gutter 40. x 200
3 sq ft framing

B + C

J + H. x 29

2 15

$$\begin{array}{r} 233.94 \\ 33.11 \\ \hline 266.65 \end{array}$$

$$\begin{array}{r} 39.06 \\ 7 \\ \hline 46.06 \end{array}$$

$$\begin{array}{r} 197.68 \\ 196.59 \\ \hline .0039 \end{array}$$

$$\begin{array}{r} 281.09 \\ 84 \\ \hline 250 \\ 252 \end{array}$$

$$\begin{array}{r} 237.39 \\ 198.22 \\ 41.06 \\ \hline 237.28 \\ 81.05 \\ \hline 22.82 \end{array}$$

$$\begin{array}{r} 46.05 \\ 21.05 \\ \hline 21.546 \\ 1187 \\ \hline 193366 \\ 196.59 \\ \hline 195.661 \end{array}$$

$$\begin{array}{r} 46.46 \\ 34 \\ \hline 48.80 \\ 16.37 \end{array}$$

$$\begin{array}{r} 46.86 \\ 38 \\ \hline 46.851 \end{array}$$

Published by H. S. CROCKER COMPANY, Stationers, Drawing Materials, Mathematical Instruments, etc., San Francisco.

TRAVERSE TABLE FOR TRANSIT BOOK.
From 1° to 90° for a distance of 100.

Degrees.	DEGREES.		½ DEGREE.		¼ DEGREE.		¼ DEGREE.		Degrees.
	Lat.	Dep.	Lat.	Dep.	Lat.	Dep.	Lat.	Dep.	
0			100.00	0.44	100.00	0.87	99.99	1.31	89
1	99.98	1.75	99.98	2.18	99.97	2.62	99.95	3.05	88
2	99.94	3.49	99.92	3.93	99.91	4.36	99.88	4.80	87
3	99.86	5.23	99.84	5.67	99.81	6.10	99.79	6.54	86
4	99.76	6.98	99.73	7.41	99.69	7.85	99.66	8.28	85
5	99.62	8.72	99.58	9.15	99.54	9.58	99.50	10.02	84
6	99.45	10.45	99.41	10.89	99.36	11.32	99.31	11.75	83
7	99.25	12.19	99.20	12.62	99.14	13.05	99.09	13.49	82
8	99.03	13.92	98.97	14.35	98.90	14.78	98.84	15.21	81
9	98.77	15.64	98.70	16.07	98.63	16.50	98.56	16.93	80
10	98.48	17.36	98.40	17.79	98.33	18.22	98.25	18.65	79
11	98.16	19.08	98.08	19.51	97.99	19.94	97.90	20.36	78
12	97.81	20.79	97.72	21.22	97.63	21.64	97.53	22.07	77
13	97.44	22.50	97.34	22.92	97.24	23.34	97.13	23.77	76
14	97.03	24.19	96.92	24.62	96.81	25.04	96.70	25.46	75
15	96.59	25.88	96.48	26.30	96.36	26.72	96.25	27.14	74
16	96.13	27.56	96.00	27.98	95.88	28.40	95.76	28.82	73
17	95.63	29.24	95.50	29.65	95.37	30.07	95.24	30.48	72
18	95.11	30.90	94.97	31.32	94.83	31.73	94.69	32.14	71
19	94.55	32.56	94.41	32.97	94.26	33.38	94.12	33.79	70
20	93.97	34.20	93.82	34.61	93.67	35.02	93.51	35.43	69
21	93.36	35.84	93.20	36.24	93.04	36.65	92.88	37.06	68
22	92.72	37.46	92.55	37.86	92.39	38.27	92.22	38.67	67
23	92.05	39.07	91.88	39.47	91.71	39.87	91.53	40.27	66
24	91.35	40.67	91.18	41.07	91.00	41.47	90.81	41.87	65
25	90.63	42.26	90.45	42.66	90.26	43.05	90.07	43.44	64
26	89.88	43.84	89.69	44.23	89.49	44.62	89.30	45.01	63
27	89.10	45.40	88.90	45.79	88.70	46.17	88.50	46.56	62
28	88.29	46.95	88.09	47.33	87.88	47.72	87.67	48.10	61
29	87.46	48.48	87.25	48.86	87.04	49.24	86.82	49.62	60
30	86.60	50.00	86.38	50.38	86.16	50.75	85.94	51.13	59
31	85.72	51.50	85.49	51.88	85.26	52.25	85.04	52.62	58
32	84.80	52.99	84.57	53.36	84.34	53.73	84.10	54.10	57
33	83.87	54.46	83.63	54.83	83.39	55.19	83.15	55.56	56
34	82.90	55.92	82.66	56.28	82.41	56.64	82.16	57.00	55
35	81.92	57.36	81.66	57.71	81.41	58.07	81.16	58.42	54
36	80.90	58.78	80.64	59.13	80.39	59.48	80.13	59.83	53
37	79.86	60.18	79.60	60.53	79.34	60.88	79.07	61.22	52
38	78.80	61.57	78.53	61.91	78.26	62.25	77.99	62.59	51
39	77.71	62.93	77.44	63.27	77.16	63.61	76.88	63.94	50
40	76.60	64.28	76.32	64.61	76.04	64.94	75.76	65.28	49
41	75.47	65.61	75.18	65.93	74.90	66.26	74.61	66.59	48
42	74.31	66.91	74.02	67.24	73.73	67.56	73.43	67.88	47
43	73.14	68.20	72.84	68.52	72.54	68.84	72.24	69.15	46
44	71.93	69.47	71.63	69.78	71.33	70.09	71.02	70.40	45
45	70.71	70.71							