

16

T.P.

16

La Jolla.

T.P. 16



599. 126.2  
73  
599.2

103  
76.7

108.35  
192.7

INDEXED

to page # 39

Return to City Engineers Office  
City Hall, San Diego, Cal.

2434  
56.5  
50  
44.5  
41.3  
40.26  
40.26  
40.26  
40.26

3406

6126  
7647  
13813

13813  
143  
134  
116  
110  
100  
87  
77  
60  
49  
30  
21  
11

Return to City Engineers Office  
City Hall, San Diego, Cal.

11516  
91511



37 55 — 60° 02  
 25 27 — 97° 57'  
 12 14 59 — 123° 24'  
 245 23

11.13 <sup>37</sup> 6 thirds

1800  
 7080  
 51  
 131  
 100  
 131  
 120  
 11  
 71  
 60  
 11  
 9  
 20  
 180

156' 3"

180 9602  
 20 2554  
 481.7  
 43353  
 9634  
 45902  
 4817  
 7546893  
 2  
 15092

180 51  
 60  
 1080  
 1131  
 120  
 131  
 120

56 1100  
 660

56 33

315 481.7  
 01641  
 24085  
 19268  
 28902  
 4817  
 79232  
 18846

12  
 20  
 240

97



500  
 25  
 360  
 419  
 353  
 1509 30  
 9 | 69 59  
 7 46 30  
 1533 00  
 42.25

115.21  
 73.80  
 42.20  
 13.174  
 126.4  
 43.1x  
 121.5  
 143.15  
 180.03  
 2080  
 1969  
 117  
 8 | 69 59  
 845  
 1730  
 2015  
 2500  
 1341  
 5430  
 75039  
 7031  
 5008  
 63.15  
 20.16

Return to City Engineers Office  
 City Hall, San Diego, Cal.

264  
 3416  
 6057  
 179  
 15173  
 2458  
 221/38  
 403/  
 11544  
 7371  
 4233  
 130046  
 8245  
 3551  
 90191  
 216  
 6815

76.72 IV. W. Cow Blbs '03  
 84.15  
 84.07  
 35.07  
 4.07

6439 176.26  
 4224 134.01  
 107.0 42.21  
 13918 197.43  
 1022 73.11  
 66.23 42.33  
 96.45 21.17  
 13741  
 4219  
 88.20  
 89.60  
 2508  
 87.50  
 176.26  
 134.01  
 42.21  
 197.43  
 73.11  
 42.33  
 21.17  
 137.41  
 42.19  
 137.29  
 42.31  
 150.7000  
 42.22  
 95.52  
 96.18  
 124.26  
 35.18  
 54.98  
 98.21  
 162.36  
 153.39  
 305.78

Return to City Engineers Office  
 City Hall, San Diego, Cal.

6324  
 15173  
 221/2  
 11544  
 7371  
 4233



# INDEX.

Note: Red-wood Hubs are set on the 7 ft. range line and the south line of La Jolla Park.

<del>agassiz</del> + Pearl Sts.	Page 4
agassiz, Ravina + Prospect.	5
Ravina + Prospect	5
" + <del>Line</del> Border	6
" " Paton Curvier	7
" " Grange Draper	7
" " Washington Eads	8
" " New York Fay	8
" <sup>Grand St.</sup> Grand, College + State.	9
Boulevard, Coast + <del>Line</del> <sup>Border</sup> (Block 34)	10
" and Paton <sup>Curvier</sup> Ave	11
" Coast, Daisy Row + <sup>Jenner St</sup> <del>Franklyn</del> Place	12
" Terrace + <del>Line</del> <sup>Grand St</sup>	13
Prospect + Ravina	5
" " <del>Line</del> Border	14
" " Paton Curvier	15
" <sup>Draper</sup> Grange + Connecticut	16
" Daisy Row + Washington <sup>Eads</sup>	17
" + New York Fay	14
" <sup>Girard</sup> Grand + <del>Line</del> <sup>Jenner St</sup> Place	18

2.25  
2.10  
8 arb.

0.72  
2.07  
3.26

32.08  
90.21  
64.49



# INDEX.

Prospect, <del>Grand</del> <sup>Hirschel</sup> & <del>Lincoln</del> Page	19
" <del>Garfield</del> <sup>Ictinus</sup> , Cave & Wall	20
" Cave, Exchange	" 21
Exchange & Irving Place	" 22
" + Beach Row.	" 23
" + State	" 24
Prospect & Beach Row	" 25
" " State	" 26
State, Park Row & Magnolia Pl.	" 27
" <del>Garfield</del> <sup>Ictinus</sup> , High & <del>Lincoln</del> <sup>Hirschel</sup>	" 28
<del>Garfield</del> <sup>Ictinus</sup> , Park Row & Irving Pl.	" 29
PARK, Park Row & Beach Row.	" 30

INDEXED  
 WK

AUG 17 1950

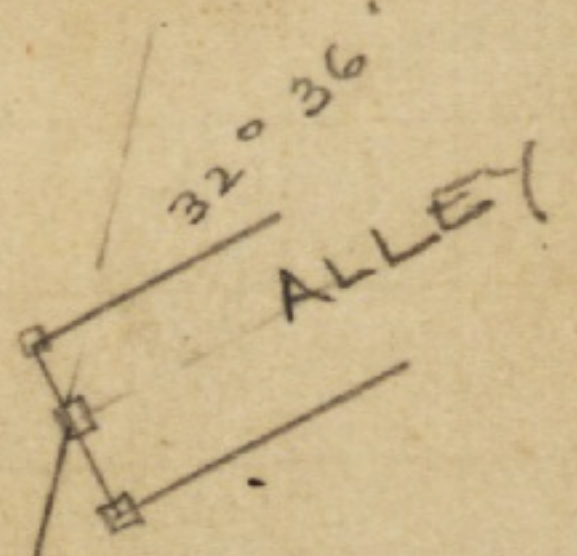




closed 10'  
 8<sup>th</sup> Vine St.  
 closed 6'  
 BIK-2

INDEXED  
 WK  
 AUG 17 1950

3.29  
 43  
 372



All reference points are 16" iron pins.  
 Block corners are wooden hubs.



OLIVETAS  
 STAIR  
 130'  
 BIK-14







BIK. 21

BIK. 22

Ravina  
May 11<sup>th</sup> '04



BIK. 9

BIK. 8

New York  
Fay

BIK. 20

BIK. 21

May 11<sup>th</sup>

Ravina



BIK. 11

BIK. 9

Washington  
Eads

Sta 4+00.1

95.75  
37.44  
35  
03  
1.09 1.0  
98 37  
81 23  
9.21

812.65  
33  
83  
82

94.05

66.38

Sheet 226

INDEXED

WK

AUG 17 1950

B. 22

Grand  
Grand

BIK. 23

State

Ravina



B. 8



May 12<sup>th</sup> 04



Boulevard

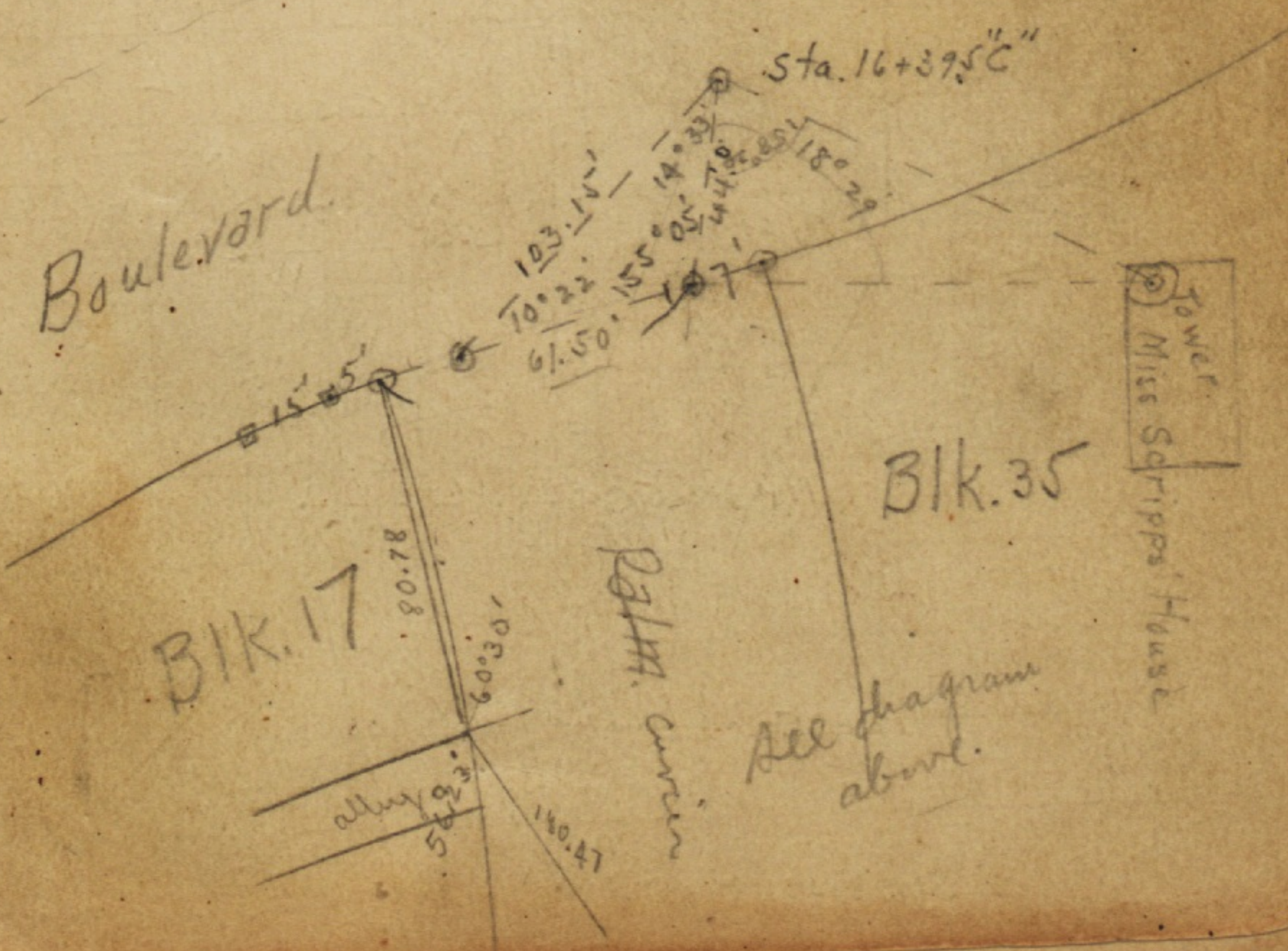


See Diagram below.

O.K.  
RMG

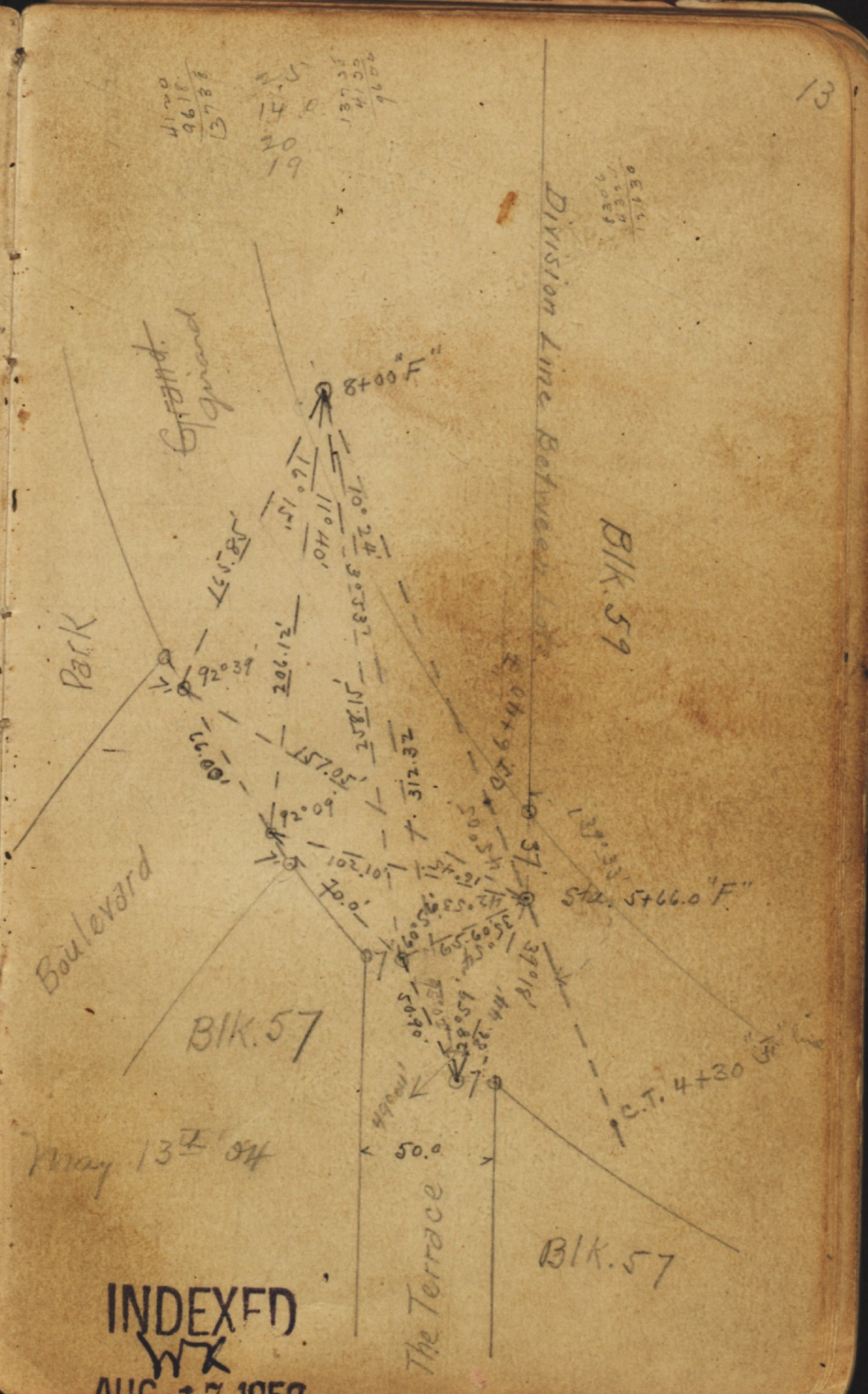
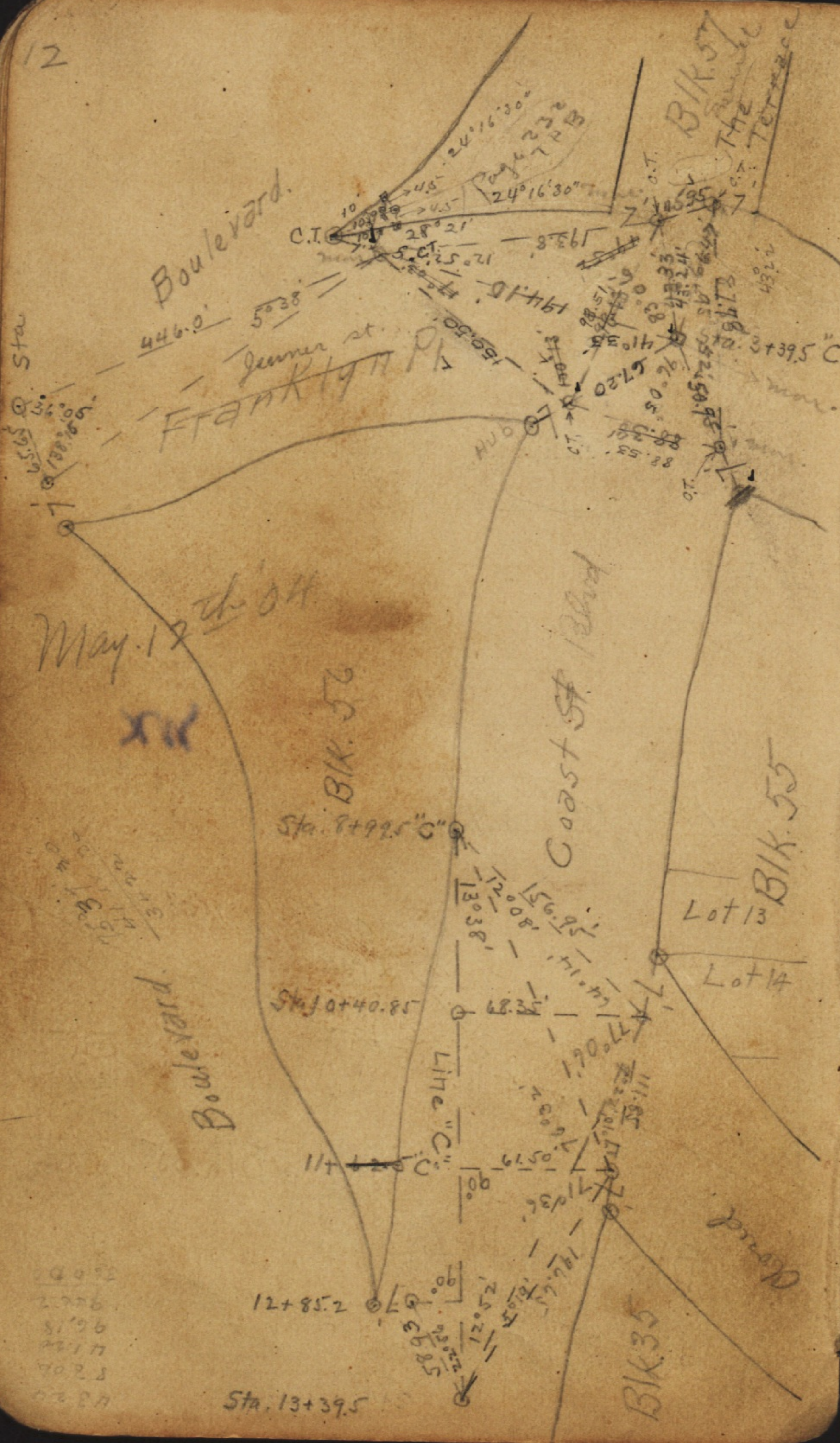
INDEXED  
WK  
AUG 17 1950

May 12<sup>th</sup> 04



All diagram above.





INDEXED  
WK  
AUG 17 1950

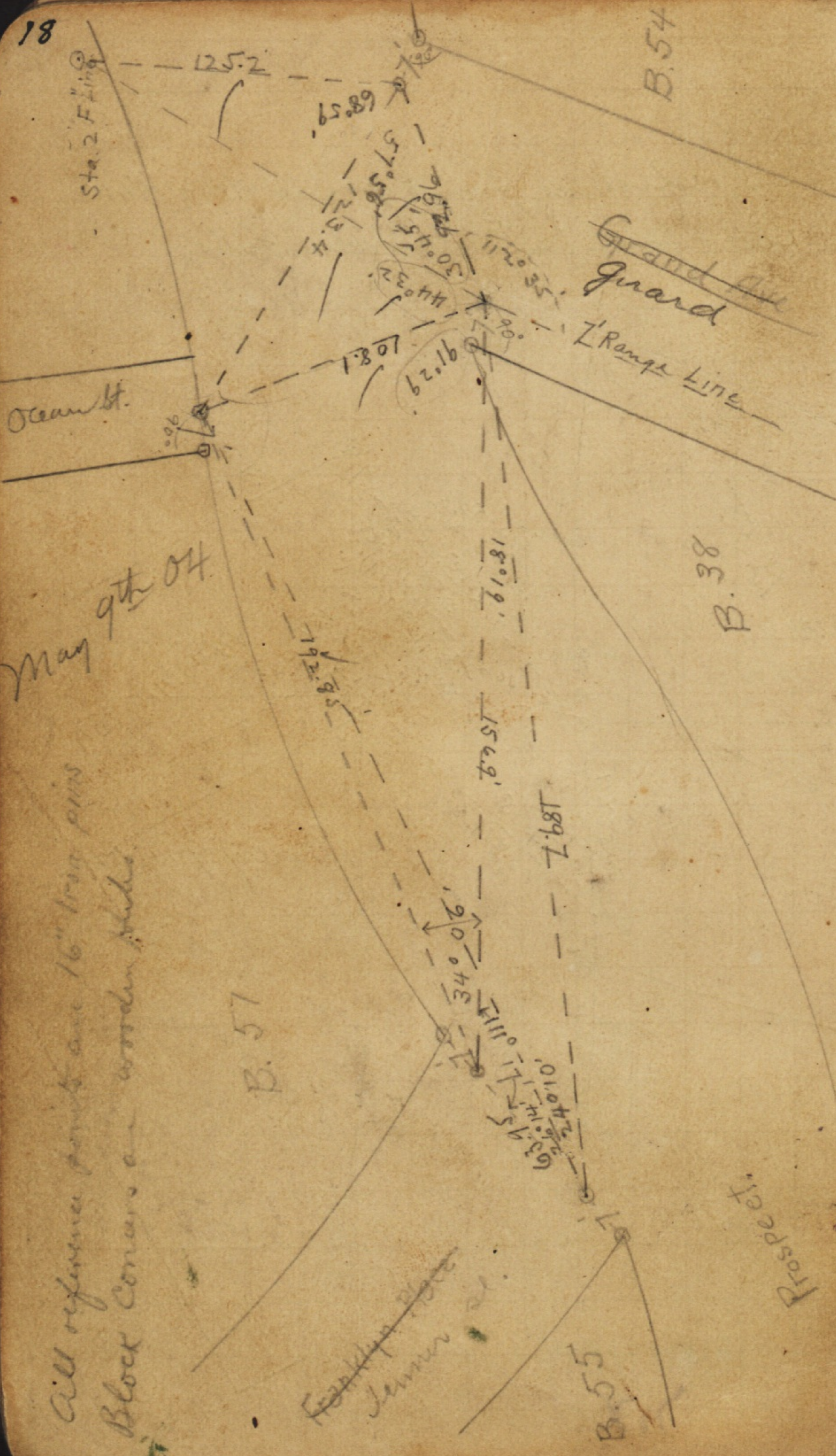










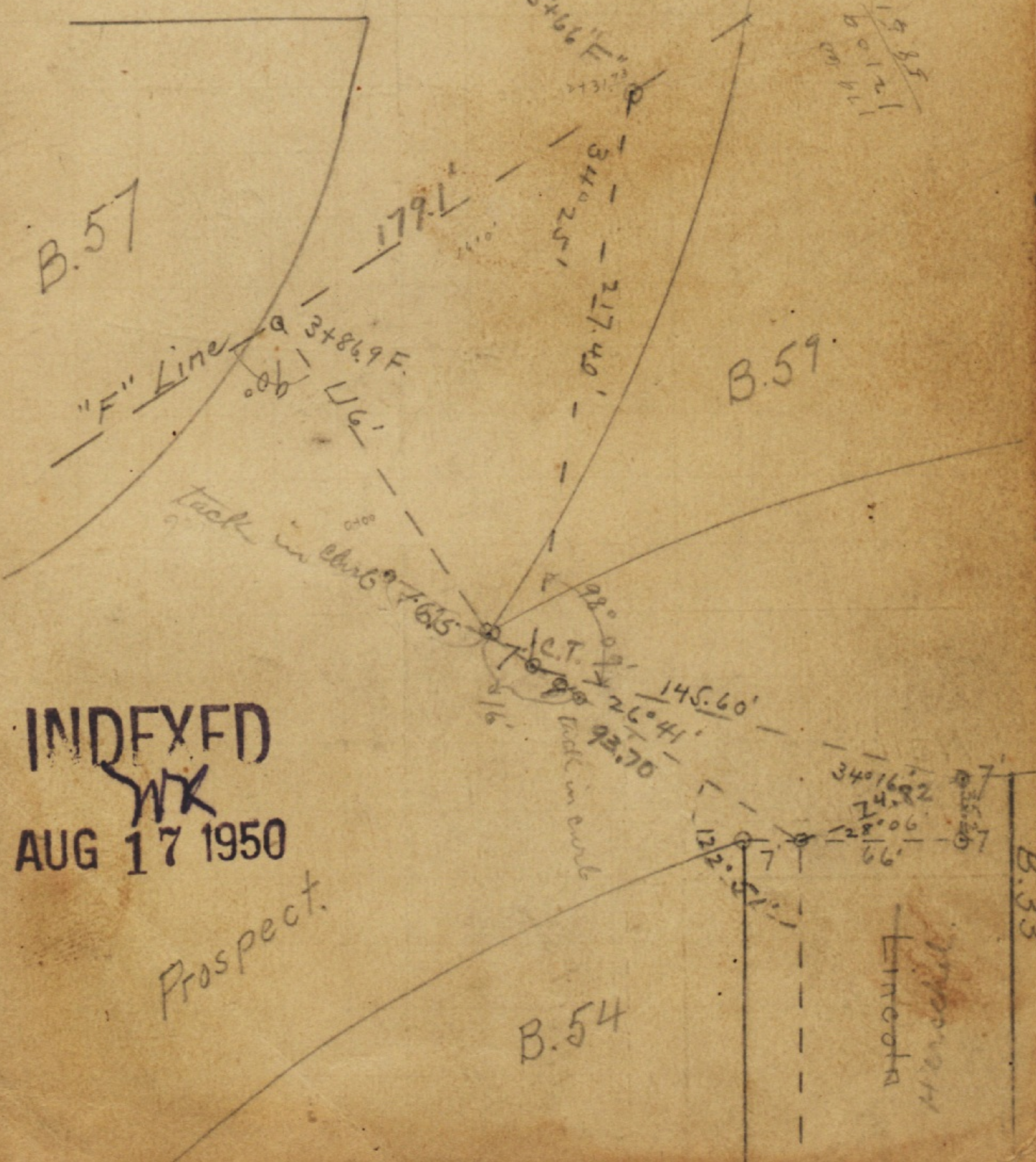


All reference points are 16" long pins  
Block corners are wooden blocks

Prospect  
Summer 21

May 13<sup>th</sup> 04

See page 13  
Terrace for this st.



INDEXED  
WK  
AUG 17 1950

Prospect











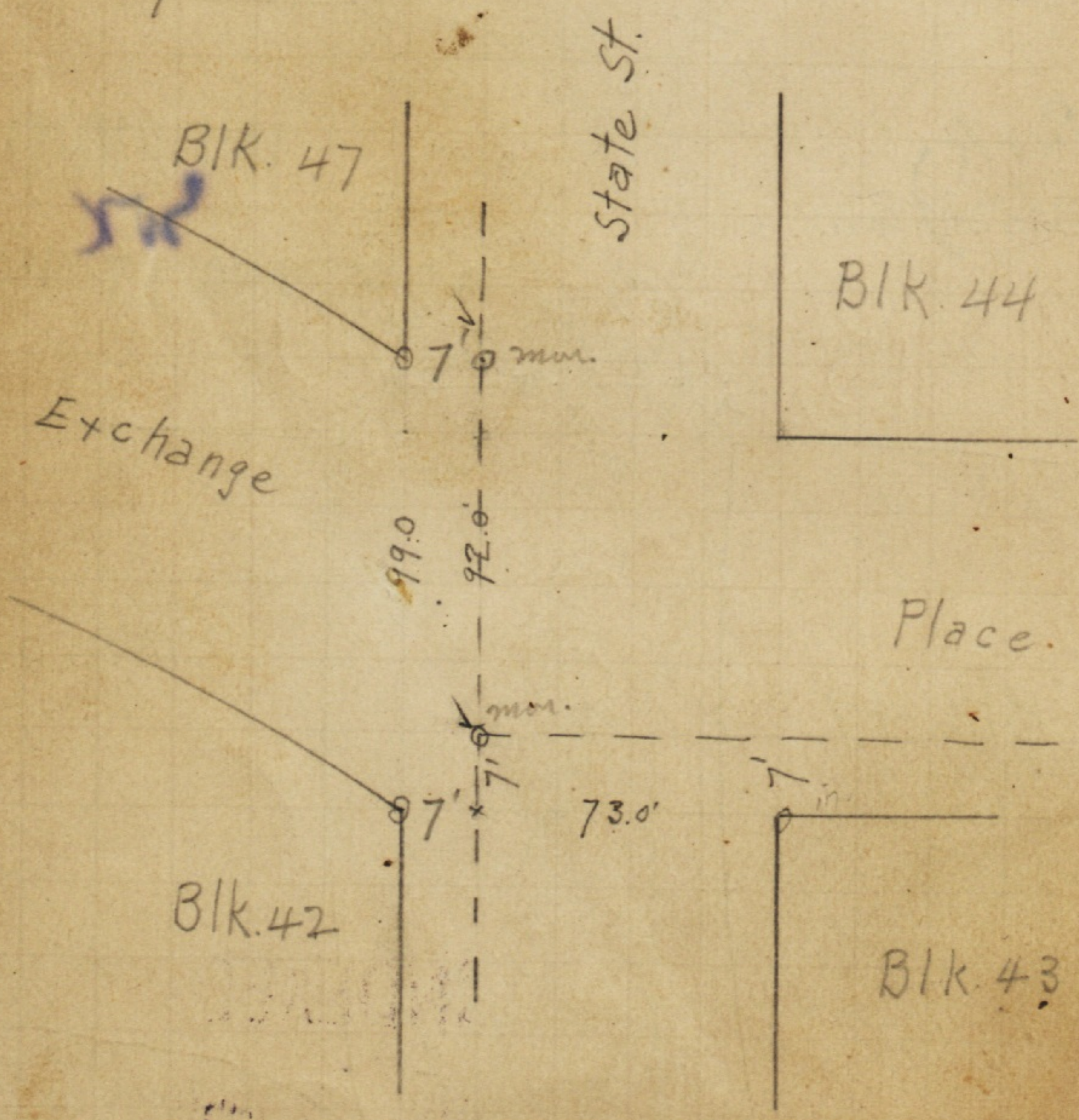
15214 16046  
56.39 15210  
95.35 8.32

24

15214  
16046  
15210  
11.52

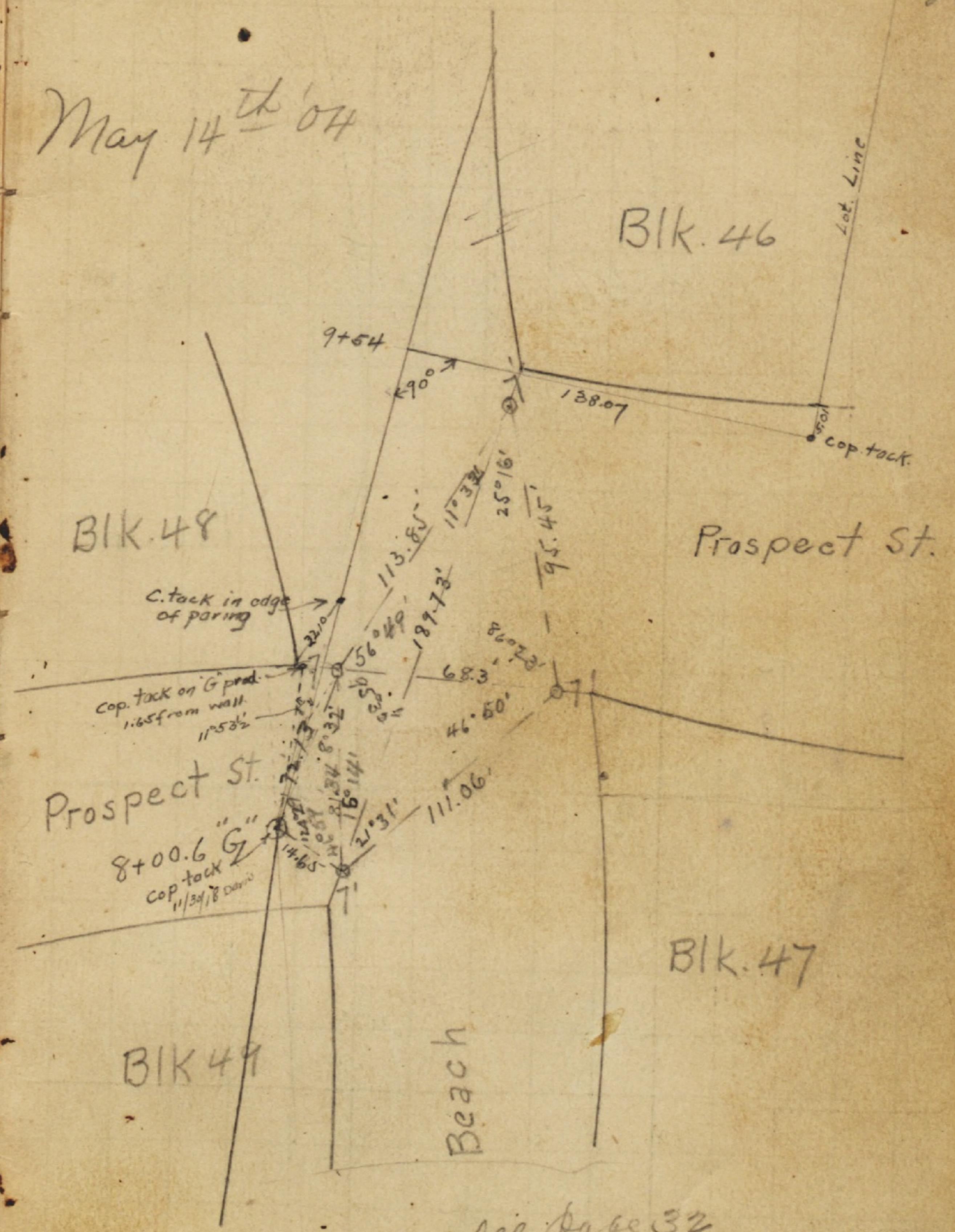
13273  
13313  
21.31  
189.50  
25.16

May 14<sup>th</sup> '04



25

May 14<sup>th</sup> '04



see page 32

INDEXED  
WXR  
AUG 17 1950







28

BIK. 27

IVANHOE  
~~Garfield~~

May 14th

BIK. 26

RD.

High 80 St.

BIK. 24

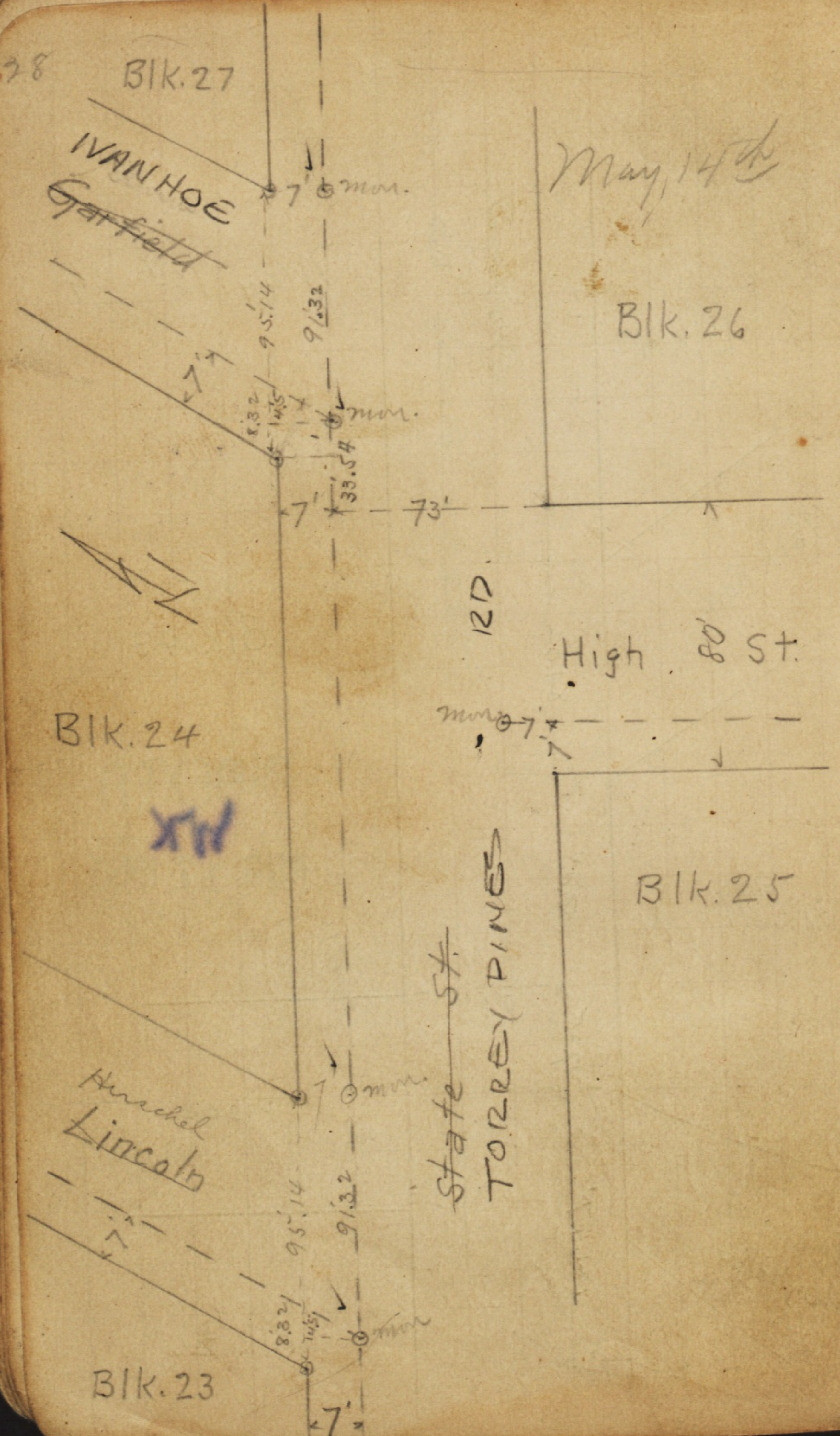
XIV

BIK. 25

State St.  
TORREY PINES

Herschel  
Lincoln

BIK. 23



29

94° 32'  
 76 29 30  
 171 01 30  
 179 59 00  
 8 58 30

May 14th '04

BIK. 50

INDEXED  
WK  
AUG 17 1950

Sierrado  
Living Pt.

Park Row

BIK. 41

B. 51

Set Mon

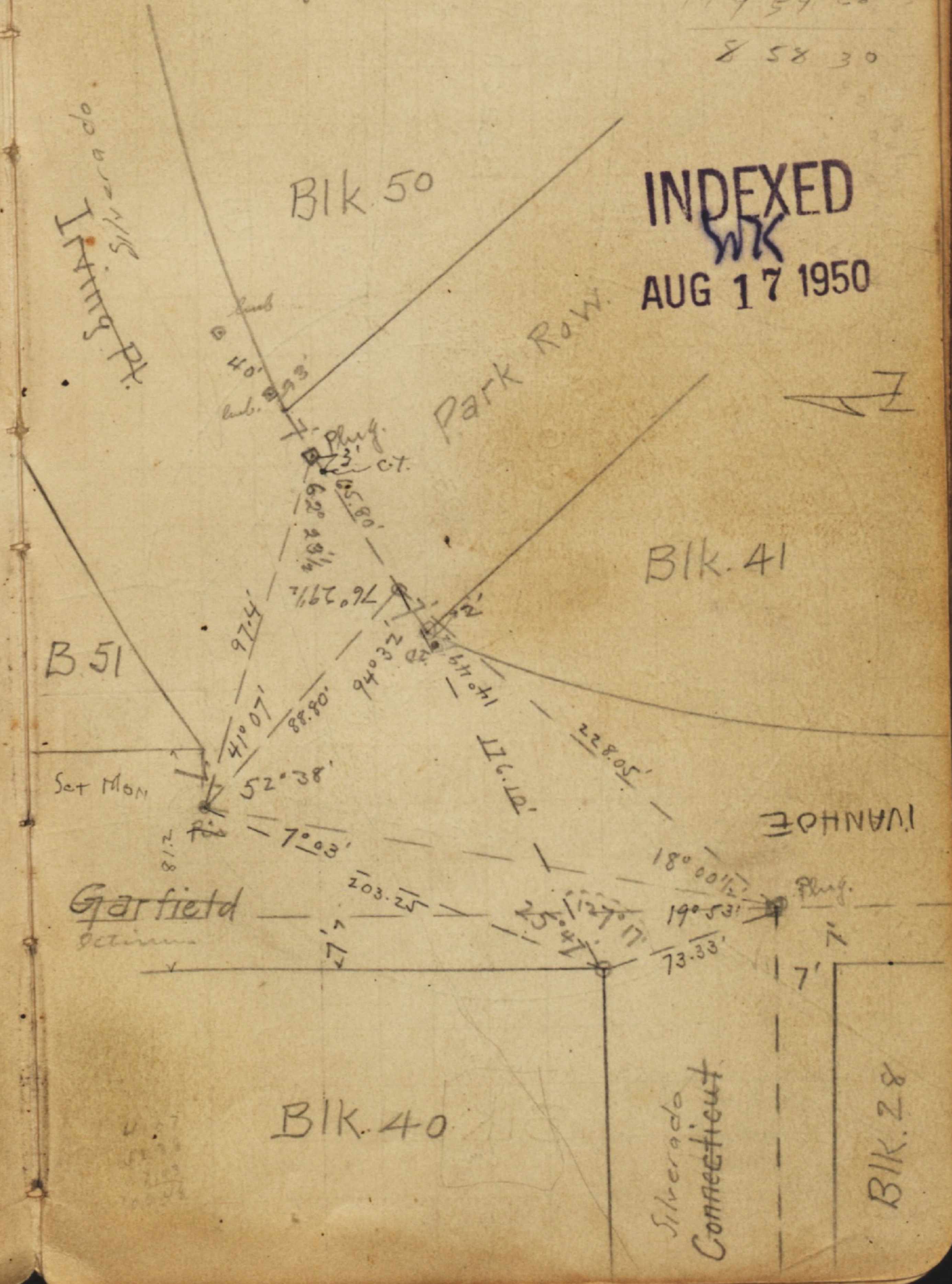
IVANHOE

Garfield  
Section

BIK. 40

Sierrado  
Connecticut

BIK. 28





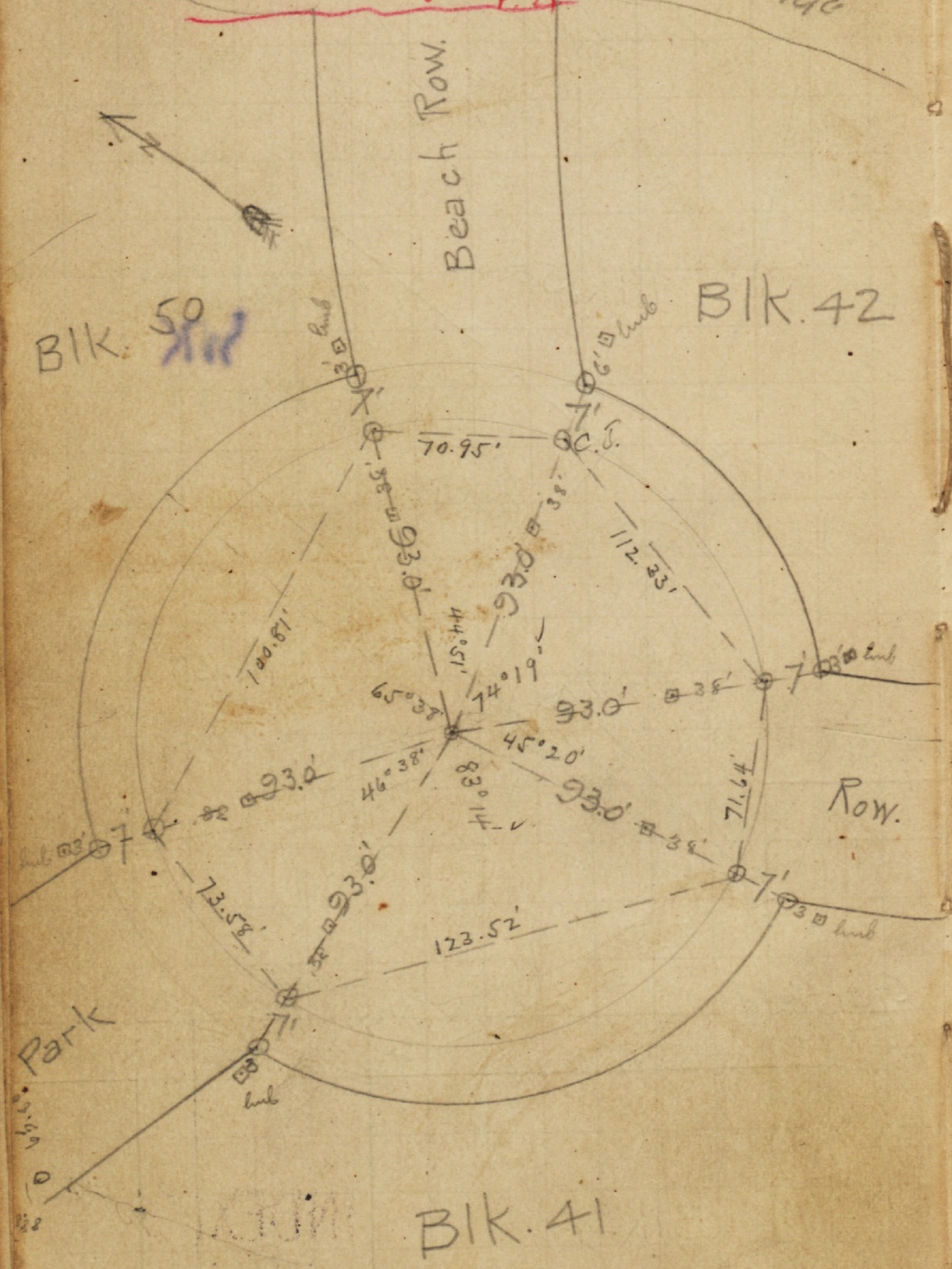
May 14<sup>th</sup> '04  
See T.P. BK 30-~~P. 23~~  
P. 24

Exchange

Beach Row.

BIK. 42

BIK. 50



fd. Ld. C.T. at 210.55

6538  
4051  
11029

307.8 = Map  
306.57 = ch  
1.23

INDEXED  
WIK  
AUG 17 1950







34 Silverado  
M.P. 14.80  
hub

hub 80.25  
9000'

165.53

Granite

hub 63

WANTHOPE  
315.5  
PI

18° 51'

Torrey Road

Kline 80  
hub 66

68.82  
hub

86.03

341.5

90° 00'

90.00

66

121.47

35

488.7

INDEXED  
WK  
AUG 17 1950



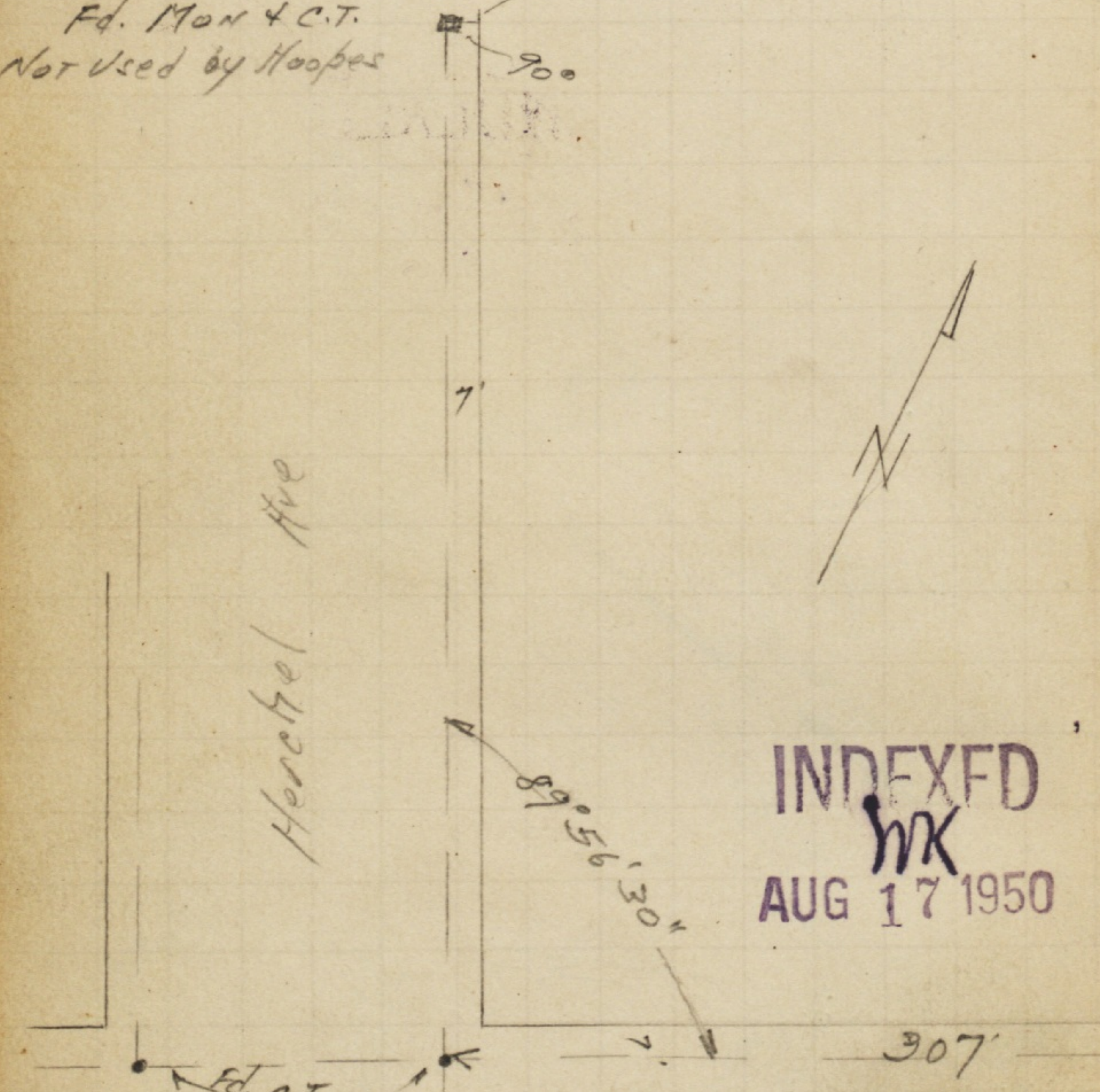
36

"Check Survey" of Chas. Hoopes  
lots 18 to 20 incl. Blk 53 La Jolla Park

El.<sup>s</sup> not checked.  
Rechecked 4-18-24  
Moore  
Sisson  
Northern

O.K. Prospect

Fd. Mon & C.T.  
Not used by Hoopes



INDEXED  
MK  
AUG 17 1950

Line of these & pts  
produced N'ly to Ivanhoe  
by Hoopes. per Christy.

Wall

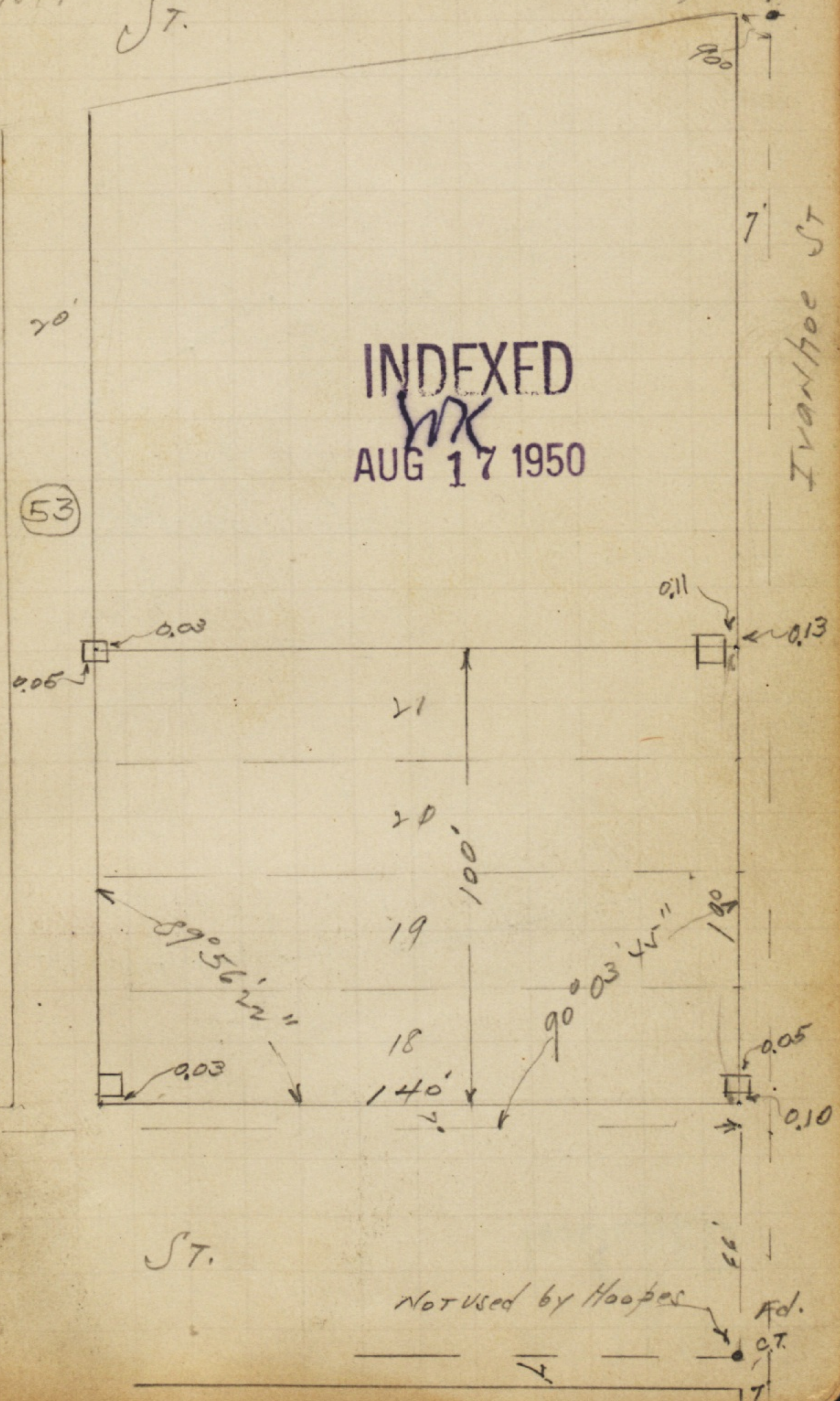
Moore  
Sisson  
Northern  
4/16/24.

2 hrs. work

ST.

Fd. Iron pin  
NOT used by Hoopes

37



INDEXED  
MK  
AUG 17 1950

Not used by Hoopes

Fd.  
C.T.



