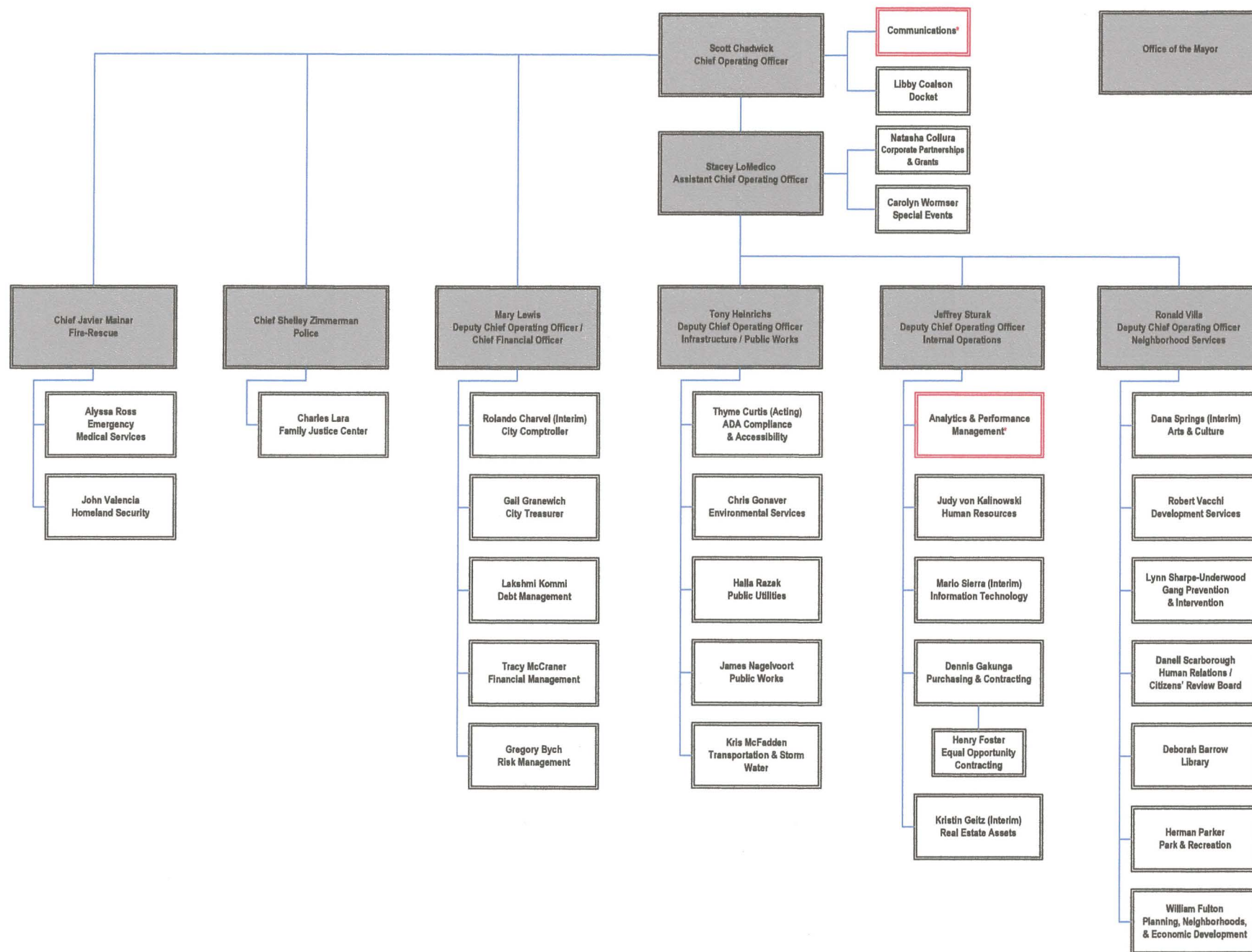
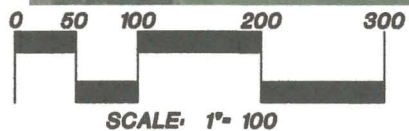
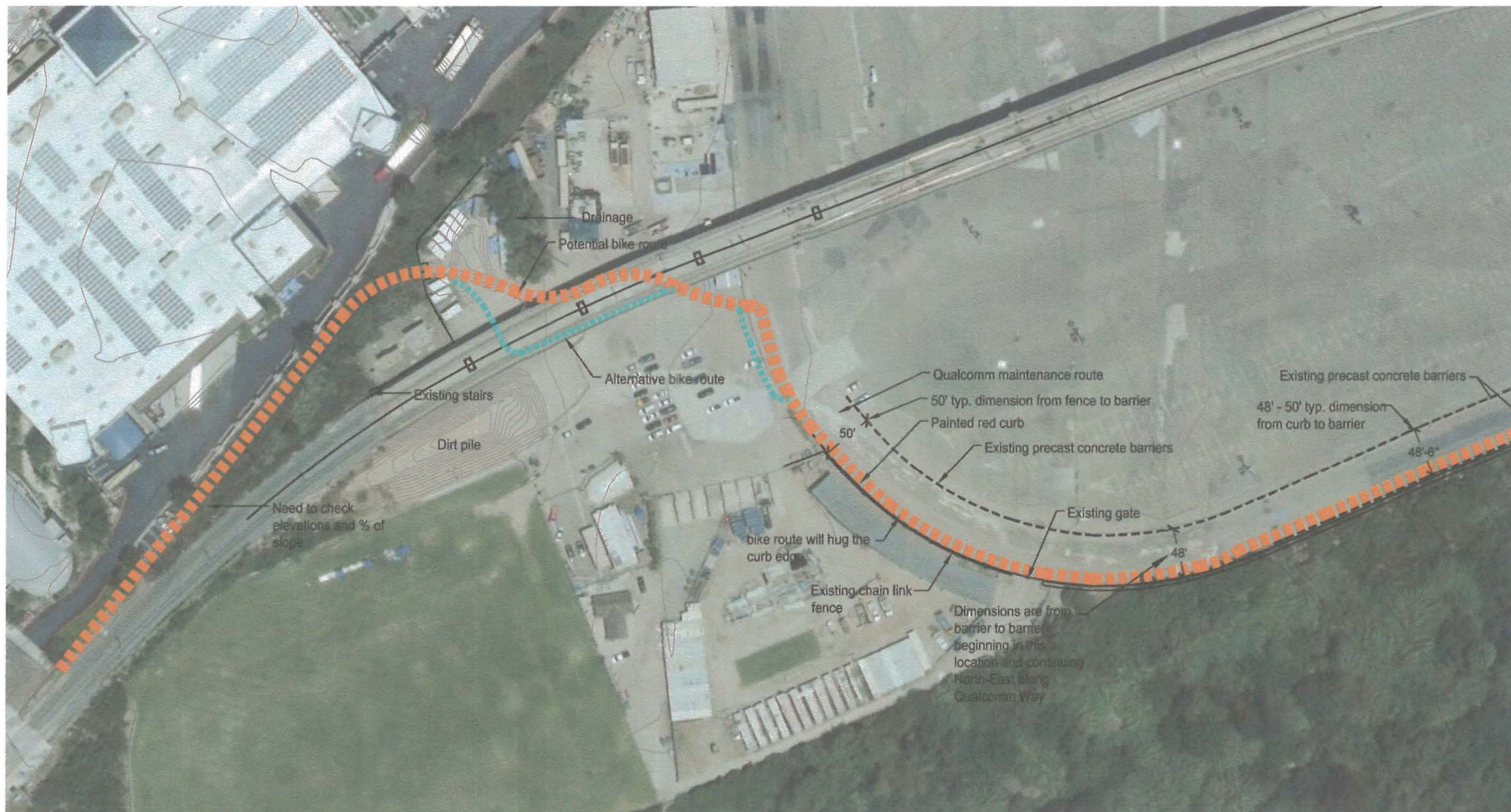


City of San Diego Organization

(All Mayoral Departments)



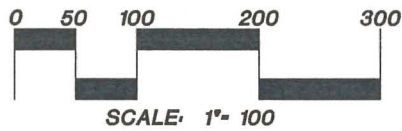
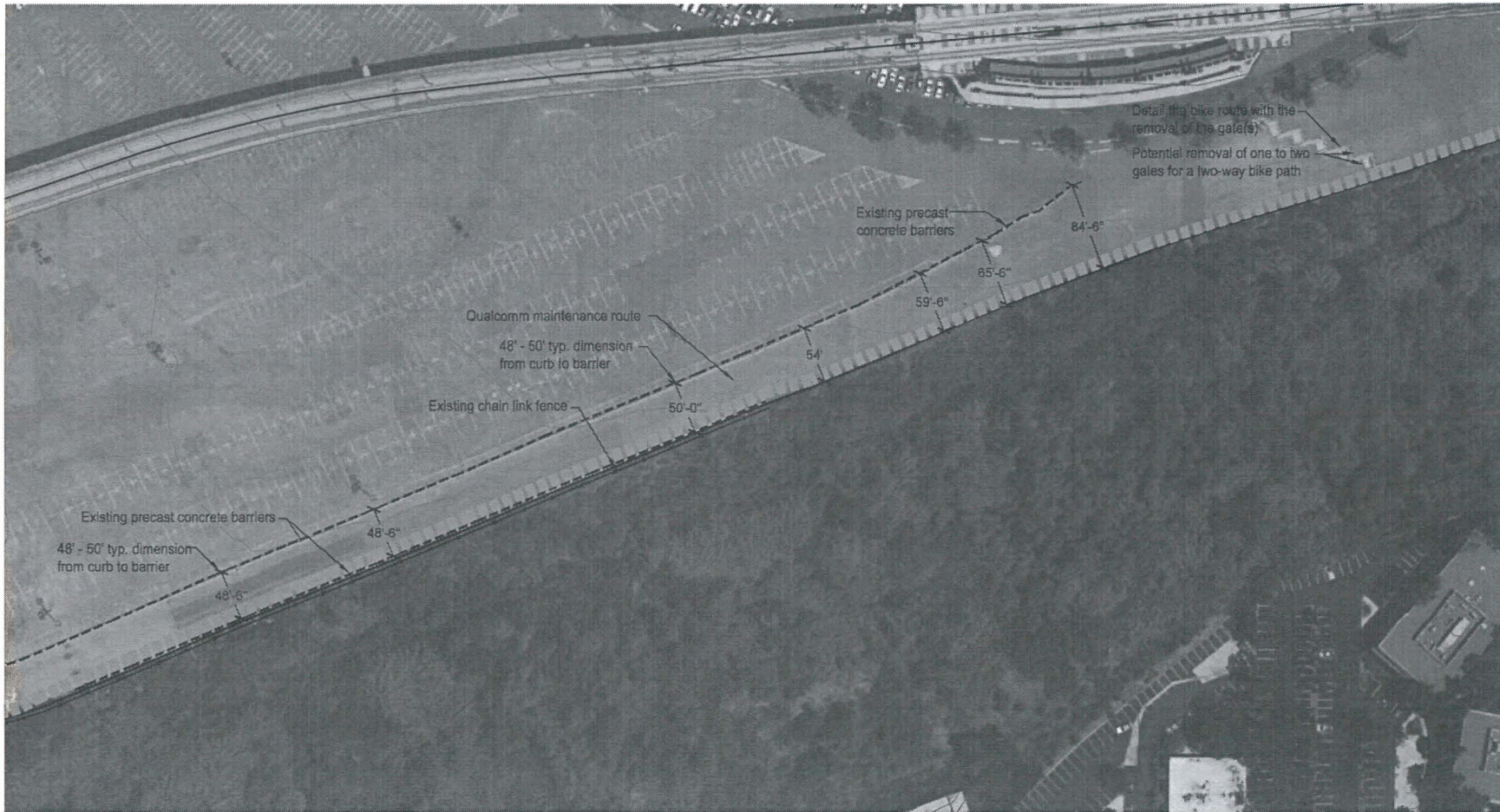


Project No. JCKKX
Drawn By
Checked By JCKKX

Project Name
SAN DIEGO RIVER TRAIL
QUALCOMM STADIUM

Sheet No.

Date
JCKK

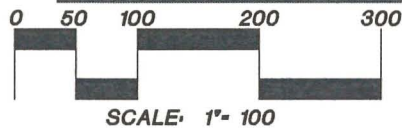


Project No. 2000X
 Drawn By:
 Checked By 2000X

Project Name
SAN DIEGO RIVER TRAIL
 QUALCOMM STADIUM

Sheet Title

Sheet
 XXXX



Project No. XXXX
 Drawn By
 Checked By XXXX

Project Name
SAN DIEGO RIVER TRAIL
QUALCOMM STADIUM

Sheet Title

Date
 XXXX

Project No. XXX

SAN DIEGO RIVER TRAIL
GAPS - INTERIM PROJECTS

RTM
 RIVERSIDE TRAILMASTERS
 10000 N. MICHIGAN AVE.
 SUITE 100
 RIVERSIDE, CA 92504
 (951) 514-1000
 WWW.RTMASTERS.COM

QUALCOMM STADIUM

Storm Water Corrective Action Plan for River Trash

May 30, 2014

ACTION ITEMS	ISSUE(S)	RESOLUTION	TARGET DATE FOR COMPLETION
Stadium will purchase additional scrim to place near the Murphy Canyon Creek channel and southern fence line under the trolley.	Trash blowing into river.	Scrim installation is 70% complete. Ongoing installation.	June 11
Rodent stations removal at edge of property.	Removed. Placement there was due to rising rodent population coming on property every day from river and across Friars Rd.	Will maintain ongoing discussion with new service provider on alternative methods.	Complete
Vehicle barn is the location for all automotive repairs. All tenants have been notified.	A small portion of oil was found on asphalt in parking lot.		Complete
Staff purchased coconut fiber mats to cover all 28 inlets. Replaced straw mats that break up and get into drains. Installing secondary catches to inlets as insurance.	Tenants not covering drains correctly.	Stadium staff interfaces with tenants to insure proper deployment	Complete
Southeast corner drain sock will capture larger amount of debris.	Increases debris collection.	Installed	Complete
Staff will move off site to collect additional trash visible from parking lot.	Other agencies that own the land are not keeping the area clean.	Stadium staff performs weekly patrols to seek out additional trash.	Performed weekly
Cleaning underneath the I-15 over pass and Bike Path north of stadium property.	Same as above. Other agencies aren't keeping up with the process.	Same as moving off site. Weekly patrols spot and remove.	Performed weekly
For stadium rented portable restrooms, Stadium staff will purchase secondary containment. Tenants will still need to provide secondary containment for the ones they rent. Portable restrooms are pumped a minimum of once per week with no events. They are all cleaned after each event which could be 2-4 times weekly.	Preventing Portable restroom materials from getting through the asphalt.	Stadium purchased secondary containment.	Complete
Contact HOT team when there are transient encampments (72 hr. posting of site prior to clean up efforts)	Trash containers are routinely broken into and collected trash spread on Stadium and River grounds. Trash is dragged to the river's edge and sorted through. Unwanted trash remains river side.	HOT Teams are notified prior to stadium events.	Ongoing.