

**GENERAL NOTES**

- APPROVAL OF THESE PLANS BY THE CITY ENGINEER DOES NOT AUTHORIZE ANY WORK TO BE PERFORMED UNTIL A PERMIT HAS BEEN ISSUED.
- THE CONTRACTOR SHALL BE RESPONSIBLE FOR SURVEY MONUMENTS AND/OR VERTICAL CONTROL BENCHMARKS WHICH ARE DISTURBED OR DESTROYED BY CONSTRUCTION. A LAND SURVEYOR MUST FIELD LOCATE, REFERENCE, AND/OR PRESERVE ALL HISTORICAL OR CONTROLLING MONUMENTS. IF DESTROYED, SUCH MONUMENTS SHALL BE REPLACED WITH APPROPRIATE MONUMENTS BY A LAND SURVEYOR. A CORNER RECORD OR RECORD OF SURVEY, AS APPROPRIATE SHALL BE FILED AS REQUIRED BY THE PROFESSIONAL LAND SURVEYORS ACT. IF ANY VERTICAL CONTROL IS TO BE DISTURBED OR DESTROYED, THE CITY OF SAN DIEGO FIELD SURVEY SECTION MUST BE NOTIFIED, IN WRITING, AT LEAST 3 DAYS PRIOR TO THE CONSTRUCTION. THE CONTRACTOR WILL BE RESPONSIBLE FOR THE COST OF REPLACING ANY VERTICAL CONTROL BENCHMARKS DESTROYED BY THE CONSTRUCTION.
- IMPORTANT NOTICE: SECTION 4216 OF THE GOVERNMENT CODE REQUIRES A DIG ALERT IDENTIFICATION NUMBER BE ISSUED BEFORE A "PERMIT TO EXCAVATE" WILL BE VALID. FOR YOUR DIG ALERT I.D. NUMBER, CALL UNDERGROUND SERVICE ALERT, TOLL FREE 1-800-422-4133, TWO DAYS BEFORE YOU DIG.
- CONTRACTOR SHALL IMPLEMENT AN EROSION AND SEDIMENT CONTROL PROGRAM DURING THE PROJECT GRADING AND/OR CONSTRUCTION ACTIVITIES. THE PROGRAM SHALL MEET ALL APPLICABLE REQUIREMENTS OF THE STATE WATER RESOURCE CONTROL BOARD AND THE CITY OF SAN DIEGO MUNICIPAL CODE AND STORM WATER STANDARDS MANUAL.
- "PUBLIC IMPROVEMENT SUBJECT TO DESUETUDE OR DAMAGE." IF REPAIR OR REPLACEMENT OF SUCH PUBLIC IMPROVEMENTS IS REQUIRED, THE OWNER SHALL OBTAIN THE REQUIRED PERMITS FOR WORK IN THE PUBLIC RIGHT-OF-WAY, SATISFACTORY TO THE PERMIT- ISSUING AUTHORITY.
- PRIOR TO ANY DISTURBANCE TO THE SITE, EXCLUDING UTILITY MARK-OUTS AND SURVEYING, THE CONTRACTOR SHALL MAKE ARRANGEMENTS FOR A PRE-CONSTRUCTION MEETING WITH THE CITY OF SAN DIEGO FIELD ENGINEERING DIVISION (858) 627-3200.
- DEVIATIONS FROM THESE SIGNED PLANS WILL NOT BE ALLOWED UNLESS A CONSTRUCTION CHANGE IS APPROVED BY THE CITY ENGINEER OR THE CHANGE IS REQUIRED BY THE CITY INSPECTOR.
- AS-BUILT DRAWINGS MUST BE SUBMITTED TO THE RESIDENT ENGINEER PRIOR TO ACCEPTANCE OF THIS PROJECT BY THE CITY OF SAN DIEGO.
- THE AREA WHICH IS DEFINED AS A NON GRADING AREA AND WHICH IS NOT TO BE DISTURBED SHALL BE STAKED PRIOR TO START OF THE WORK. THE PERMIT APPLICANT AND ALL OF THEIR REPRESENTATIVES OR CONTRACTORS SHALL COMPLY WITH THE REQUIREMENTS FOR PROTECTION OF THIS AREA AS REQUIRED BY ANY APPLICABLE AGENCY. ISSUANCE OF THE CITY'S GRADING PERMIT SHALL NOT RELIEVE THE APPLICANT OR ANY OF THEIR REPRESENTATIVES OR CONTRACTORS FROM COMPLYING WITH ANY STATE OR FEDERAL REQUIREMENTS BY AGENCIES INCLUDING BUT NOT LIMITED TO CALIFORNIA REGIONAL WATER QUALITY CONTROL BOARD, CALIFORNIA DEPARTMENT OF FISH AND GAME. COMPLIANCE MAY INCLUDE OBTAINING PERMITS, OTHER AUTHORIZATIONS, OR COMPLIANCE WITH MANDATES BY ANY APPLICABLE STATE OR FEDERAL AGENCY.

**GROUND WATER DISCHARGE**

- ALL GROUND WATER EXTRACTION AND SIMILAR WASTE DISCHARGES TO SURFACE WATER NOT TRIBUTARY TO THE SAN DIEGO BAY ARE PROHIBITED UNTIL IT CAN BE DEMONSTRATED THAT THE OWNER HAS APPLIED AND OBTAINED AUTHORIZATION FROM THE STATE OF CALIFORNIA VIA AN OFFICIAL "ENROLLMENT LETTER" FROM THE REGIONAL WATER QUALITY CONTROL BOARD IN ACCORDANCE WITH THE TERMS, PROVISIONS AND CONDITIONS OF SATE ORDER NO R9-2009-0002 NPDES CAG919002.
- THE ESTIMATED MAXIMUM DISCHARGE RATES MUST NOT EXCEED THE LIMITS SET IN THE OFFICIAL "ENROLLMENT LETTER" FROM THE REGIONAL BOARD UNLESS PRIOR NOTIFICATION AND SUBSEQUENT AUTHORIZATION HAS BEEN OBTAINED, AND DISCHARGE OPERATIONS MODIFIED TO ACCOMMODATE THE INCREASED RATES.
- ALL GROUND WATER EXTRACTIONS AND SIMILAR WASTE DISCHARGES TO SURFACE WATERS NOT TRIBUTARY TO THE SAN DIEGO BAY ARE PROHIBITED UNTIL IT CAN BE DEMONSTRATED THAT THE OWNER HAS APPLIED AND OBTAINED AUTHORIZATION FROM THE STATE OF CALIFORNIA VIA OFFICIAL "ENROLLMENT LETTER" FROM THE REGIONAL WATER QUALITY CONTROL BOARD IN ACCORDANCE WITH THE TERMS, PROVISIONS AND CONDITIONS OF STATE ORDER NO R9-2007-0034 NPDES NO. CAG919001.

**SHEET INDEX**

TITLE SHEET	SHEET 1
ALVARADO LOWER CHANNEL	SHEETS 2-3
MAINTENANCE METHODOLOGIES	SHEET 4
MAINTENANCE BMPs NOTES	SHEET 5

**TOPOGRAPHY SOURCE**

CITY OF SAN DIEGO SANGIS 1999 2 FOOT CONTOURS, NAVD29

**BENCHMARK**

BRASS PLUG AT NORTHEAST CORNER OF MISSION GORGE ROAD AND TWAIN AVENUE  
ELEV. 81,431 BASED ON NAVD 29 AS SHOWN IN THE CITY OF SAN DIEGO BENCH BOOK

**REFERENCE DRAWINGS**

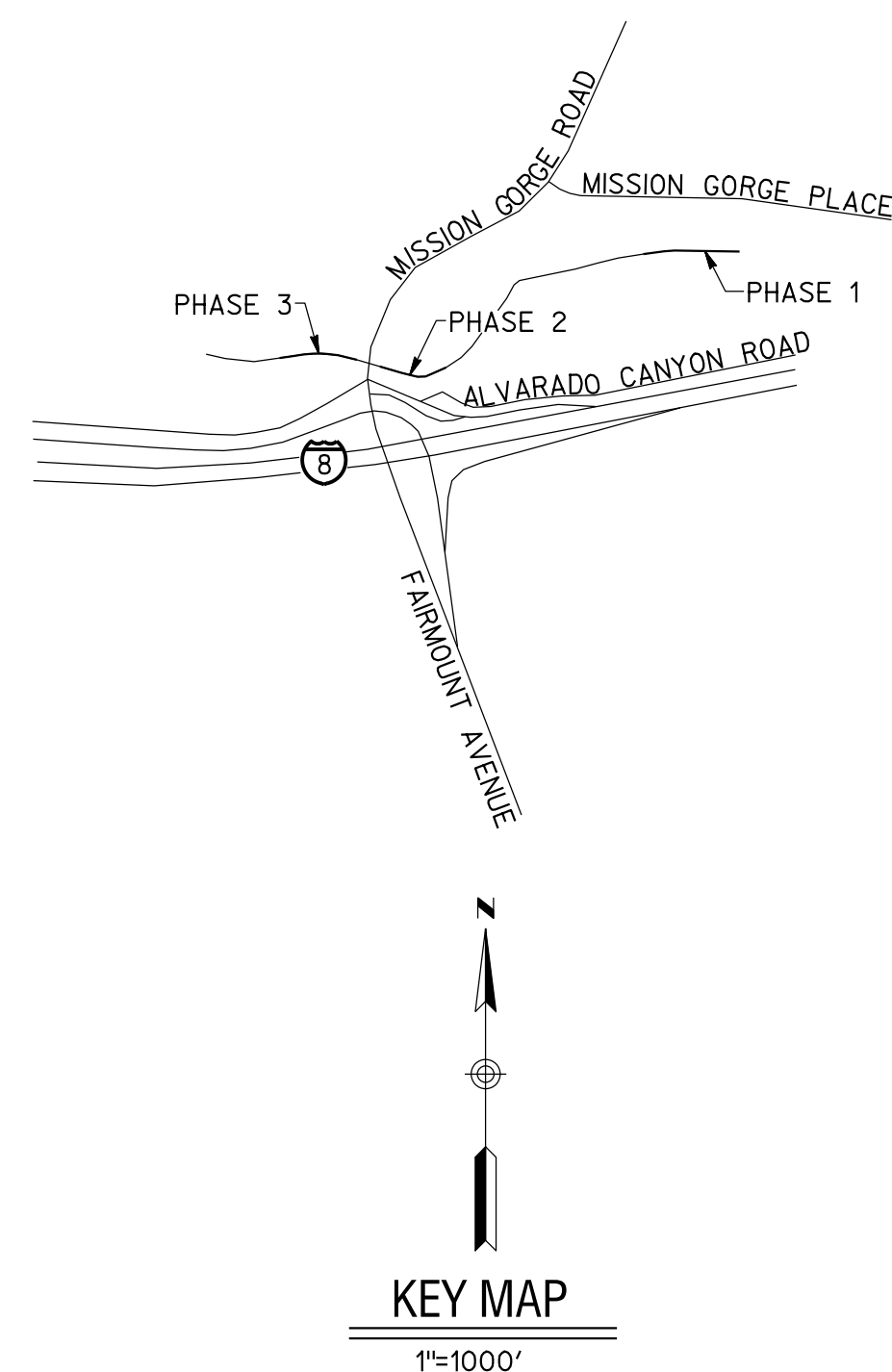
- GRADING PLANS FOR EAS MISSION VALLEY INDUSTRIAL CENTER.....CITY OF SAN DIEGO DWG. NO. 16540-D
- CONCRETE LINED CHANNEL PLANS.....FEDERAL PROJECT NO. 1-172(12)

**STORM WATER PROTECTION NOTES**

- THIS PROJECT IS SUBJECT TO MUNICIPAL STORM WATER PERMIT ORDER NO. R920070001; AND RISK LEVEL: CHECK ONE BELOW.
  - WPCP
  - CGP RISK LEVEL 1
  - CGP RISK LEVEL 2
  - CGP RISK LEVEL 3
  - CGP LUP TYPE 1
  - CGP LUP TYPE 2
  - CGP LUP TYPE 3
- CHECK ONE:
  - THIS PROJECT WILL EXCEED THE MAXIMUM DISTURBED AREA LIMIT, THEREFORE A WEATHER TRIGGERED ACTION PLAN (WTAP) IS REQUIRED.
  - THIS PROJECT WILL FOLLOW PHASED GRADING NOT TO EXCEED FIVE (5) ACRES PER PHASE.
  - NOT APPLICABLE
- THE CONTRACTOR SHALL COMPLY WITH THE REQUIREMENTS OF THE WPCP OR SWPPP AS APPLICABLE.

WATER POLLUTION CONTROL PLAN FOR UPPER ALVARADO CREEK  
CHANNEL MAINTENANCE PROJECT PREPARED BY:  
McGRATH CONSULTING  
PO BOX 2488  
EL CAJON, CA, 92021  
(619) 250-2025  
PREPARED 01/22/2015

**MAINTENANCE PLANS FOR:  
ALVARADO LOWER CHANNEL MMP MAP # 59 & 60**



**WORK TO BE DONE**

THE IMPROVEMENTS CONSIST OF THE FOLLOWING WORK TO BE DONE ACCORDING TO THESE PLANS AND THE SPECIFICATIONS AND STANDARD DRAWINGS OF THE CITY OF SAN DIEGO.

MAINTENANCE OF CONCRETE & EARTHENED CHANNELS TO REMOVE ACCUMULATED SEDIMENT AND OTHER DEBRIS

**STANDARD SPECIFICATIONS:**

DOCUMENT NO.	DESCRIPTION
PITS070112-01	STANDARD SPECIFICATIONS FOR PUBLIC WORKS CONSTRUCTION (GREENBOOK), 2012 EDITION
PITS070112-02	CITY OF SAN DIEGO STANDARD SPECIFICATIONS FOR PUBLIC WORKS CONSTRUCTION (WHITEBOOK), 2012 EDITION
PITS070112-04	CALIFORNIA DEPARTMENT OF TRANSPORTATION MANUAL OF UNIFORM TRAFFIC CONTROL DEVICES, 2012 EDITION
PITS070112-06	CALIFORNIA DEPARTMENT OF TRANSPORTATION U.S. CUSTOMARY STANDARD SPECIFICATIONS, 2010 EDITION
PITS070112-03	CITY OF SAN DIEGO STANDARD DRAWINGS FOR PUBLIC WORKS CONSTRUCTION, 2012 EDITION
PITS070112-05	CALIFORNIA DEPARTMENT OF TRANSPORTATION U.S. CUSTOMARY STANDARD PLANS, 2010 EDITION
CASQA MANUAL	CALIFORNIA STORMWATER QUALITY ASSOCIATION, STORMWATER BEST MANAGEMENT PRACTICE HANDBOOK PORTAL: CONSTRUCTION, JANUARY 2015

**LEGEND**

EXISTING IMPROVEMENTS ITEM	SYMBOL
EXIST. CONTOURS	---
EXIST. LOT LINE	---
MULTI-HABITAT PLANNING AREA (MHPA)	[Symbol]
EXIST. CURB INLET	[Symbol]
EXIST. STORM DRAIN MAIN	[Symbol]
EXIST. SEWER MAIN	[Symbol]
EXIST. WATER MAIN	[Symbol]
CHANNEL MAINTENANCE AREA	[Symbol]
ACCESS & LOADING AREA	[Symbol]
LOADING AREA	[Symbol]
BY-PASS PUMP	[Symbol]
TEMPORARY DIVERSION HOSE LINE	[Symbol]

**STORM WATER MANAGEMENT BMPs**

ITEM	SEE	SYMBOL
STREET SWEEPING AND VACUUMING DAILY	CASQA MANUAL	SE-7
SANDBAG BARRIER	CASQA MANUAL	SE-8
STORM DRAIN INLET PROTECTION	CASQA MANUAL	SE-10

**DECLARATION OF RESPONSIBLE CHARGE**

I HEREBY DECLARE THAT I AM THE ENGINEER OF WORK FOR THIS PROJECT, THAT I HAVE EXERCISED RESPONSIBLE CHARGE OVER THE DESIGN OF THE PROJECT AS DEFINED IN SECTION 6703 OF THE BUSINESS AND PROFESSIONS CODE, AND THAT THE DESIGN IS CONSISTENT WITH CURRENT STANDARDS.

I UNDERSTAND THAT THE CHECK OF PROJECT DRAWINGS AND SPECIFICATIONS BY THE CITY OF SAN DIEGO IS CONFINED TO A REVIEW ONLY AND DOES NOT RELIEVE ME, AS ENGINEER OF WORK, OF MY RESPONSIBILITIES FOR PROJECT DESIGN.



5620 FRIARS ROAD  
SAN DIEGO, CA 92110  
619-291-0707  
(FAX) 619-291-4165

CARSON P. EDGINGTON R.C.E. NO. 76519 DATE

**CITY OF SAN DIEGO  
DEVELOPMENT SERVICES DEPARTMENT**

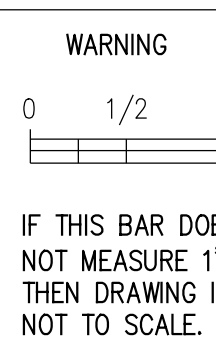


**STREET DATA TABLE**

STREET NAME	CLASSIFICATION	SPEED (MPH)	ADT (VEHICLES)	R/W (FT)

**CONSTRUCTION CHANGE TABLE**

CHANGE	DATE	EFFECTED OR ADDED SHEET NUMBERS	APPROVAL NO.



CONSTRUCTION SITE STORM WATER PRIORITY: \_\_\_\_\_

<b>MAINTENANCE PLANS FOR:</b>				I.O. NO. _____	
<b>ALVARADO LOWER CHANNEL MMP MAP #59 &amp; 60</b>				P.T.S. NO. _____	
CITY OF SAN DIEGO, CALIFORNIA TRANSPORTATION AND STORMWATER DEPARTMENT SHEET 1 OF 5 SHEETS				V.T.M. _____	
FOR CITY ENGINEER		DATE			
DESCRIPTION	BY	APPROVED	DATE	FILMED	
ORIGINAL	REC				XXXX-XXXX
				NAD83 COORDINATES	
				XXX-XXXX	
				LAMBERT COORDINATES	
AS-BUILTS					
CONTRACTOR		DATE STARTED			
INSPECTOR		DATE COMPLETED			





ALVARADO (LOWER) CHANNEL - MMP MAP NO. 60  
IMP MAINTENANCE METHODOLOGY TABLE (PHASE 1)

FACILITY/CHANNEL	ALVARADO (LOWER) CHANNEL (LR4) PHASE 1 (4522-4576 MISSION GORGE PLACE)
DIMENSIONS	ALVARADO (LOWER) CHANNEL (PHASE 1) TRAPAZOIDAL, CONCRETE-LINED APPROX. 500' LENGTH APPROX. 49' TOP WIDTH 25' BOTTOM WIDTH 8' IN DEPTH 1/2-1.5' OF SEDIMENT CUBIC YARDS 300-400 MAXIMUM CUBIC YARDS: 600
MAINTENANCE METHOD	MECHANIZED SEDIMENT & VEGETATION REMOVAL
EQUIPMENT (EQUIPMENT WILL BE EQUIVALENT OR SMALLER IN SIZE/TYPE)	<ul style="list-style-type: none"> <li>GRADALL (5100 SERIES)</li> <li>FRONT-END LOADER (CAT 966)</li> <li>DUMP TRUCKS (10/12 YD)</li> <li>4" OR 6" TRASH PUMPS (WACKER OR GODWIN - FOR DRY WEATHER FLOW DIVERSION)</li> </ul>
SCHEDULE	IN CHANNEL WORK WILL TAKE 5 DAYS ; 6:00 AM TO 6:00 PM;
STAFFING	10 TO 14 PEOPLE
MAINTENANCE PROCEDURE CHANNEL SEQUENCE	1. ALVARADO (LOWER) WILL BE MAINTAINED IN SEQUENTIAL ORDER PHASE 1, 2, THEN 3.
ACCESS & LOADING AREA(S)	ALVARADO (LOWER) CHANNEL (PHASE 1) <b>ACCESS &amp; LOADING AREA</b> - LOADER DRIVES INTO CHANNEL FROM EXISTING PAVED ASPHALT PARKING LOT REAR OF 4561 MISSION GORGE PLACE. LOADING OCCURS AT REAR OF 4561 MISSION GORGE PLACE.
STAGING AREA	STAGING OF TRUCKS WILL BE DONE ON MISSION GORGE PLACE. LOADER AND GRADALL WILL BE STAGED BEHIND 4561 MISSION GORGE PLACE. ALL MATERIALS WILL BE HAULED IMMEDIATELY TO A LEGAL DISPOSAL SITE (MIRAMAR LANDFILL).
METHODOLOGY	<ol style="list-style-type: none"> <li>DRY WEATHER FLOW DIVERSION BERM (TIGER DAM, SANDBAGS, AND/OR VISQUEEN), DIVERSION PIPES, &amp; PUMPS WILL BE PLACED AT EASTERN LIMITS AND WESTERN LIMITS OF CHANNEL CLEANING. DIVERSION PIPES WILL BE PLACED ON NORTHERN SIDE OF CHANNEL AND EXTENDED TO A DISCHARGE AREA JUST WEST OF THE WESTERLY MAINTENANCE LIMITS.</li> <li>LOADER IS CHAINED TO GRADALL &amp; LOWERED INTO CHANNEL AT ACCESS &amp; LOADING AREA.</li> <li>LOADER PUSHES VEGETATION &amp; SEDIMENT TO GRADALL STATIONED OUTSIDE/ABOVE CHANNEL ON PAVED, ASPHALT PARKING LOT.</li> <li>GRADALL SCOOPS MATERIAL &amp; LOADS MATERIAL INTO WAITING DUMP TRUCK LOCATED ON PAVED, ASPHALT PARKING LOT.</li> <li>DUMP TRUCKS HAUL MATERIAL TO LEGAL DISPOSAL SITE (MIRAMAR LANDFILL).</li> <li>LOADER IS CHAINED TO GRADALL FOR ASSISTANCE OUT OF CHANNEL.</li> <li>DRY WEATHER DIVERSION BERM, DIVERSION PIPES, &amp; PUMPS REMOVED.</li> <li>LOADER &amp; GRADALL EXIT PAVED, ASPHALT PARKING LOT.</li> </ol>
POST-MAINTENANCE	<ol style="list-style-type: none"> <li>DEMobilize EQUIPMENT.</li> <li>REMOVE TEMPORARY CONSTRUCTION BMPs.</li> </ol>
OTHER NOTES	<ol style="list-style-type: none"> <li>SWEEPERS WILL SWEEP ADJACENT PUBLIC RIGHTS-OF-WAY AND IMMEDIATE TRUCK LOADING SITES NIGHTLY.</li> <li>A PUMP MAY BE USED AT VARIOUS LOCATIONS TO REMOVE PONDED WATER PRIOR TO EQUIPMENT ENTERING THE CHANNEL. WATER WILL BE DISCHARGED IN THE VICINITY OF THE DIVERSION DISCHARGE.</li> <li>ALL EQUIPMENT (OTHER THAN PUMPS) FUELED OUTSIDE CHANNEL &amp; LOCATED AT LEAST 150' FROM WATERS OF US/STATE.</li> </ol>

ALVARADO (LOWER) CHANNEL - MMP MAP NO. 59  
IMP MAINTENANCE METHODOLOGY TABLE (PHASE 2)

FACILITY/CHANNEL	ALVARADO (LOWER) CHANNEL (LR2B)- PHASE 2 (4282 CAMINO DEL RIO NORTH)
DIMENSIONS	ALVARADO (LOWER) CHANNEL (PHASE 2) TRAPAZOIDAL, CONCRETE-LINED & SOIL BOTTOM APPROX. 370' LENGTH 40-60' TOP WIDTH 18-26' BOTTOM WIDTH 9-12' IN DEPTH 3-6' OF SEDIMENT 100-200 CUBIC YARDS MAXIMUM CUBIC YARDS: 400
MAINTENANCE METHOD	MECHANIZED SEDIMENT & VEGETATION REMOVAL
EQUIPMENT (EQUIPMENT WILL BE EQUIVALENT OR SMALLER IN SIZE/TYPE)	<ul style="list-style-type: none"> <li>GRADALL (5100 SERIES)</li> <li>SKID STEER/BOBCAT (S650)</li> <li>DUMP TRUCKS (10/12 YD)</li> <li>4" OR 6" TRASH PUMPS (WACKER OR GODWIN - FOR DRY WEATHER FLOW DIVERSION)</li> <li>RUBBER TRACKED SKIDSTEER (JOHN DEERE 333E)</li> <li>EXCAVATOR (JOHN DEERE 500)</li> </ul>
SCHEDULE	IN CHANNEL WORK WILL TAKE 3 DAYS ; 6:00 AM TO 6:00 PM;
STAFFING	8 TO 10 PEOPLE
MAINTENANCE PROCEDURE CHANNEL SEQUENCE	1. ALVARADO (LOWER) WILL BE MAINTAINED IN SEQUENTIAL ORDER PHASE 1, 2, THEN 3.
ACCESS & LOADING AREA(S)	ALVARADO (LOWER) CHANNEL (PHASE 2) <b>ACCESS &amp; LOADING AREA</b> - BOBCAT & EXCAVATOR DRIVE INTO CHANNEL FROM EXISTING ASPHALT ACCESS RAMP ON NORTH SIDE OF CHANNEL - GRADALL LOADS TRUCKS STATIONED ON EXISTING PAVED ACCESS RAMP.
STAGING AREA	STAGING OF EQUIPMENT WILL BE DONE ON PAVED, ASPHALT RAMP. ALL MATERIALS WILL BE HAULED IMMEDIATELY TO A LEGAL DISPOSAL SITE (MIRAMAR LANDFILL).
METHODOLOGY	<ol style="list-style-type: none"> <li>DRY WEATHER FLOW DIVERSION BERM (TIGER DAM, SANDBAGS, AND/OR VISQUEEN), DIVERSION PIPES, &amp; PUMPS WILL BE PLACED AT EASTERN LIMITS OF PHASE 3 MAINTENANCE AREA (LR2A). DIVERSION PIPES WILL DISCHARGE WEST OF PHASE 2 MAINTENANCE AREA.</li> <li>DRY WEATHER DIVERSION PIPES &amp; PUMPS WILL BE PLACED EASTERN LIMITS OF PHASE 2 MAINTENANCE AREA. DIVERSION PIPES WILL DISCHARGE WEST OF PHASE 2 MAINTENANCE AREA.</li> <li>BOBCAT AND EXCAVATORIS DRIVE INTO AT ACCESS &amp; LOADING AREA.</li> <li>BOBCAT PUSHES VEGETATION &amp; SEDIMENT TO GRADALL STATIONED ON ACCESS RAMP.</li> <li>GRADALL SCOOPS MATERIAL &amp; LOADS MATERIAL INTO WAITING DUMP TRUCK LOCATED WITHIN ACCESS &amp; LOADING AREA (PAVED ACCESS RAMP).</li> <li>DUMP TRUCKS HAUL MATERIAL TO LEGAL DISPOSAL SITE (MIRAMAR LANDFILL).</li> <li>BOBCAT &amp; EXCAVATOR DRIVE OUT OF CHANNEL UP PAVED ACCESS RAMP.</li> </ol>
POST-MAINTENANCE	<ol style="list-style-type: none"> <li>DEMobilize EQUIPMENT.</li> <li>REMOVE TEMPORARY CONSTRUCTION BMPs.</li> </ol>
OTHER NOTES	<ol style="list-style-type: none"> <li>SWEEPERS WILL SWEEP ADJACENT PUBLIC RIGHTS-OF-WAY AND IMMEDIATE TRUCK LOADING SITES NIGHTLY.</li> <li>A PUMP MAY BE USED AT VARIOUS LOCATIONS TO REMOVE PONDED WATER PRIOR TO EQUIPMENT ENTERING THE CHANNEL. WATER WILL BE DISCHARGED IN THE VICINITY OF THE DIVERSION DISCHARGE.</li> <li>ALL EQUIPMENT (OTHER THAN PUMPS) FUELED OUTSIDE CHANNEL &amp; LOCATED AT LEAST 150' FROM WATERS OF US/STATE.</li> </ol>

ALVARADO (LOWER) CHANNEL - MMP MAP NO. 59  
IMP MAINTENANCE METHODOLOGY TABLE (PHASE 3)

FACILITY/CHANNEL	ALVARADO (LOWER) CHANNEL (LR2A) PHASE 3 (5801 FAIRMOUNT AVENUE)
DIMENSIONS	ALVARADO (LOWER) CHANNEL (PHASE 3) TRAPEZOIDAL, CONCRETE-LINED APPROX. 380' LENGTH APPROX. 60' TOP WIDTH 30' BOTTOM WIDTH 8-12' IN DEPTH 2-12' OF SEDIMENT 100-200 CUBIC YARDS MAXIMUM CUBIC YARDS: 300
MAINTENANCE METHOD	MECHANIZED SEDIMENT & VEGETATION REMOVAL
EQUIPMENT (EQUIPMENT WILL BE EQUIVALENT OR SMALLER IN SIZE/TYPE)	<ul style="list-style-type: none"> <li>GRADALL (5100 SERIES)</li> <li>SKID STEER/BOBCAT (S650)</li> <li>FRONT-END LOADER (CAT 966)</li> <li>DUMP TRUCKS (10/12 YD)</li> <li>4" OR 6" TRASH PUMPS (WACKER OR GODWIN - FOR DRY WEATHER FLOW DIVERSION)</li> </ul>
SCHEDULE	IN CHANNEL WORK WILL TAKE 3 DAYS ; 6:00 AM TO 6:00 PM;
STAFFING	8 TO 10 PEOPLE
MAINTENANCE PROCEDURE CHANNEL SEQUENCE	1. ALVARADO (LOWER) PHASE 3 (STATION 10+00 TO 14+25)
ACCESS & LOADING AREA(S)	ALVARADO (LOWER) CHANNEL (PHASE 3) <b>ACCESS &amp; LOADING AREA</b> - (STATION 13+06 TO 14+25) - PRIMARY PLAN, BOBCATS ENTERS CHANNEL FROM PHASE 2 ACCESS AREA, BOBCATS ARE DRIVEN FROM PHASE 2 AREA EASTERLY TO PHASE 3 AREA THROUGH EXISTING STORM DRAIN BOX CULVERTS LOCATED UNDERNEATH MISSION GORGE ROAD. BOBCATS WORK FROM EASTERLY LIMITS OF PHASE 3 AREA AND PUSH SEDIMENT AND VEGETATION WESTERLY TO PHASE 2 ACCESS AND LOADING AREA. BACKUP PLAN - LOADER IS CHAINED TO GRADALL AND LOWERED INTO CHANNEL FROM EXISTING PARKING LOT AT 5801 FAIRMOUNT AVENUE. GRADALL POSITIONED ABOVE CHANNEL. GRADALL LOADS TRUCKS STATIONED ON EXISTING PARKING LOT AT 5801 FAIRMOUNT AVENUE.
STAGING AREA	STAGING OF TRUCKS & EQUIPMENT WILL BE DONE ON PAVED, ASPHALT PARKING LOT AT 5801 FAIRMOUNT AVENUE. ALL MATERIALS WILL BE HAULED IMMEDIATELY TO A LEGAL DISPOSAL SITE (MIRAMAR LANDFILL).
METHODOLOGY	<ol style="list-style-type: none"> <li>DRY WEATHER FLOW DIVERSION BERM (TIGER DAM, SANDBAG, AND/OR VISQUEEN), DIVERSION PIPES, &amp; PUMPS WERE PUT IN PLACE DURING PHASE 2 CHANNEL MAINTENANCE. THESE ITEMS ARE LOCATED AT THE EASTERN LIMITS OF MAINTENANCE AREA OF PHASE 3.</li> <li>BOBCAT ENTERS CHANNEL FROM ACCESS AREA IN THE SAME FASHION AS PHASE 2.</li> <li>BOBCAT TRAVELS FROM PHASE 2 (LR2B), AND PUSHES MATERIAL FROM PHASE 3 AREA OF WORK TO PHASE 2 LOADING AREA.</li> <li>MATERIAL IS LOADED INTO DUMP TRUCKS IN THE SAME FASHION AS PHASE 2 WORK.</li> <li>DUMP TRUCKS HAUL MATERIAL TO LEGAL DISPOSAL SITE (MIRAMAR LANDFILL)</li> <li>DRY WEATHER DIVERSION BERM, DIVERSION PIPES, &amp; PUMPS REMOVED.</li> <li>BACKUP PLAN - LOADER IS CHAINED TO GRADALL AND LOWERED INTO CHANNEL AT ACCESS &amp; LOADING AREA.</li> <li>GRADALL STATIONED OUTSIDE/ABOVE CHANNEL AT 5801 FAIRMOUNT AVENUE.</li> <li>GRADALL SCOOPS MATERIAL &amp; LOADS MATERIAL INTO WAITING DUMP TRUCKS AT 5801 FAIRMOUNT AVENUE.</li> <li>DUMP TRUCKS HAUL MATERIAL TO LEGAL DISPOSAL SITE (MIRAMAR LANDFILL).</li> <li>LOADER IS CHAINED TO GRADALL AND RAISED OUT OF CHANNEL.</li> <li>DRY WEATHER DIVERSION BERM, DIVERSION PIPES, &amp; PUMPS REMOVED.</li> </ol>
POST-MAINTENANCE	<ol style="list-style-type: none"> <li>DEMobilize EQUIPMENT.</li> <li>REMOVE TEMPORARY CONSTRUCTION BMPs.</li> </ol>
OTHER NOTES	<ol style="list-style-type: none"> <li>SWEEPERS WILL SWEEP ADJACENT PUBLIC RIGHTS-OF-WAY AND IMMEDIATE TRUCK LOADING SITES NIGHTLY.</li> <li>A PUMP MAY BE USED AT VARIOUS LOCATIONS TO REMOVE PONDED WATER PRIOR TO EQUIPMENT ENTERING THE CHANNEL. WATER WILL BE DISCHARGED IN THE VICINITY OF THE DIVERSION DISCHARGE.</li> <li>ALL EQUIPMENT (OTHER THAN PUMPS) FUELED OUTSIDE CHANNEL &amp; LOCATED AT LEAST 150' FROM WATERS OF US/STATE.</li> </ol>

ENGINEER OF WORK

CARSON P. EDGINGTON R.C.E. 76519 DATE



<b>MAINTENANCE PLANS FOR:</b>			
<b>ALVARADO LOWER CHANNEL</b>			
<b>MMP MAP #59 &amp; 60</b>			
CITY OF SAN DIEGO, CALIFORNIA TRANSPORTATION AND STORMWATER DEPARTMENT SHEET 4 OF 5 SHEETS		I.O. NO. _____	P.T.S. NO. _____
FOR CITY ENGINEER _____ DATE _____		V.T.M. _____	
DESCRIPTION	BY	APPROVED	DATE
ORIGINAL	REC		
AS-BUILTS			
CONTRACTOR _____	DATE STARTED _____		
INSPECTOR _____	DATE COMPLETED _____		

