
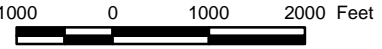

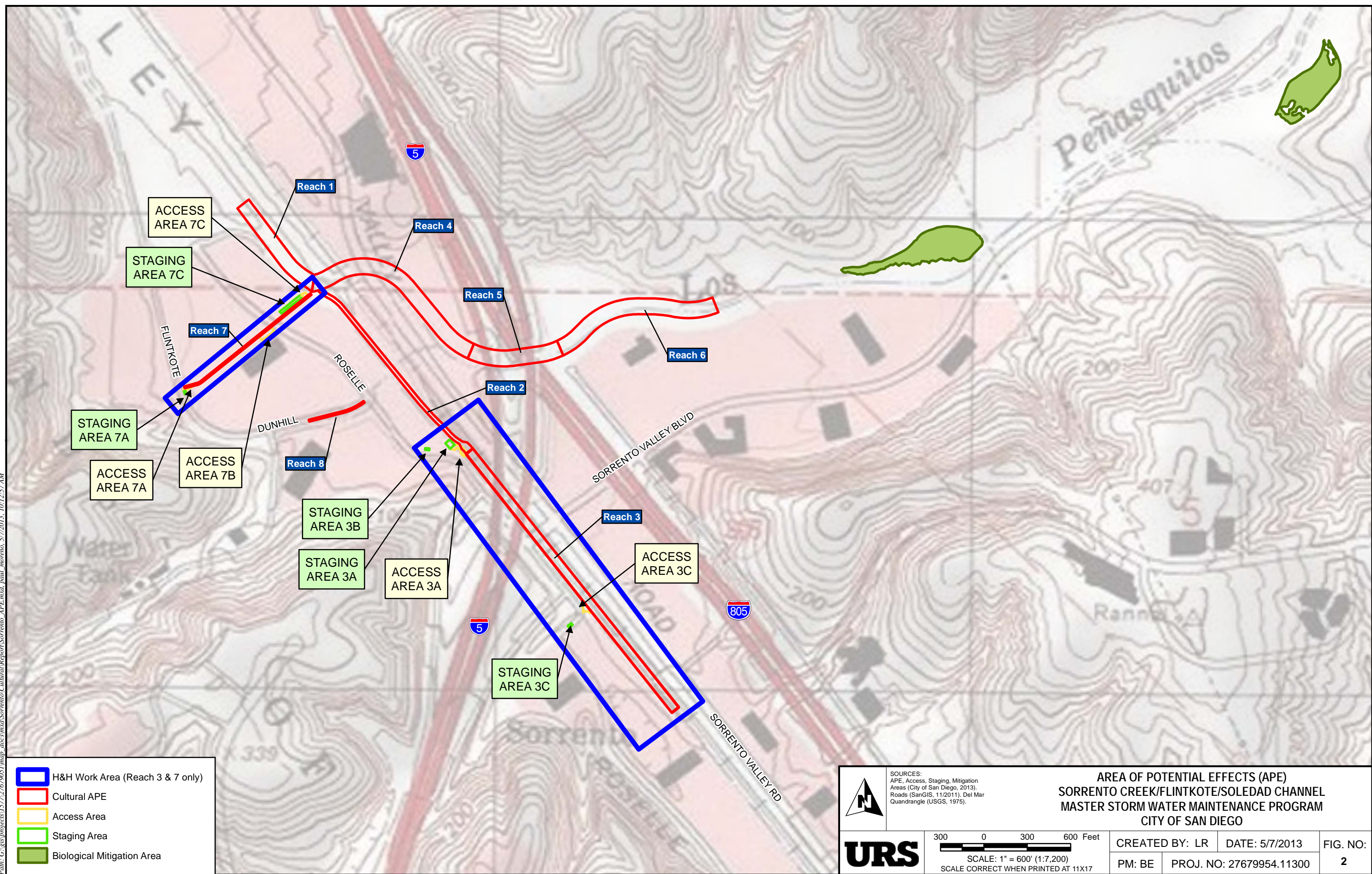


Area of Potential Effects  
 Biological Mitigation Area

	SOURCES: APE, Mitigation Areas (City of San Diego, 2013), Del Mar Quadrangle (USGS, 1975).			<b>VICINITY MAP</b> <b>SORRENTO CREEK/FLINTKOTE/SOLEDAD CHANNEL</b> <b>MASTER STORM WATER MAINTENANCE PROGRAM</b> <b>CITY OF SAN DIEGO</b>		
	 SCALE: 1" = 2,000' (1:24,000) SCALE CORRECT WHEN PRINTED AT 8.5x11	CREATED BY: PM	DATE: 4/29/2013	<b>FIG. NO:</b> <b>1</b>		
	PM: BE	PROJ. NO: 27679954.11300				



Path: G:\gis\proj\cas\1577\2767905\map\_docs\msd\Sorrento\Cultural\Report\Sorrento\_APE.mxd, paul\_morano, 5/7/2013, 10:12:57 AM



- H&H Work Area (Reach 3 & 7 only)
- Cultural APE
- Access Area
- Staging Area
- Biological Mitigation Area

**URS**

SOURCES:  
 APE, Access, Staging, Mitigation Areas (City of San Diego, 2013).  
 Roads (SanGIS, 11/2011). Del Mar Quadrangle (USGS, 1975).

**AREA OF POTENTIAL EFFECTS (APE)  
 SORRENTO CREEK/FLINTKOTE/SOLEDAD CHANNEL  
 MASTER STORM WATER MAINTENANCE PROGRAM  
 CITY OF SAN DIEGO**

300 0 300 600 Feet  
 SCALE: 1" = 600' (1:7,200)  
 SCALE CORRECT WHEN PRINTED AT 11X17

CREATED BY: LR	DATE: 5/7/2013	FIG. NO:	
PM: BE	PROJ. NO: 27679954.11300		<b>2</b>