

University Avenue Mobility Study

prepared for



July 21, 2011



DAVID EVANS
AND ASSOCIATES, INC.

Darnell & ASSOCIATES, INC.
TRANSPORTATION PLANNING & TRAFFIC ENGINEERING





Outline



- Introduction
- Project Overview
- Review of Options 1, 2 and 3
- Landscape Concepts
- Measures of Effectiveness
- Break Out Sessions
- Conclusion



Project Goals

Improve Mobility within the Corridor

- Pedestrians
- Bicycles
- Transit
- Vehicles





Overview



- Working Group – March 2011 to June 2011
- Walk Audits – March 10 and March 12, 2011
- Community Workshop #1 – April 2011
- Community Workshop #2 - May 2011
- Community Workshop #3 – July 2011
- Eastern Area Planning Group – September 2011



Working Group Introduction



- Laura Riebau – EACPC
- Jody Talbott – CNF
- Betty White – RPCC
- Lee Rittiner – RPCC/EAPAC
- Jeannette Maxwell – Crossroads PAC BOD
- Jim Stone – Walk San Diego
- Jennifer Finnegan – College Area BID
- Anna Orzei-Arnita – Redwood Village CC
- Jim Bartell – Northgate Markets
- Mario Ingrassi – Crossroads PAC
- Randy VanVleck - CHCDC
- Samantha Ollinger – San Diego County Bicycle Coalition



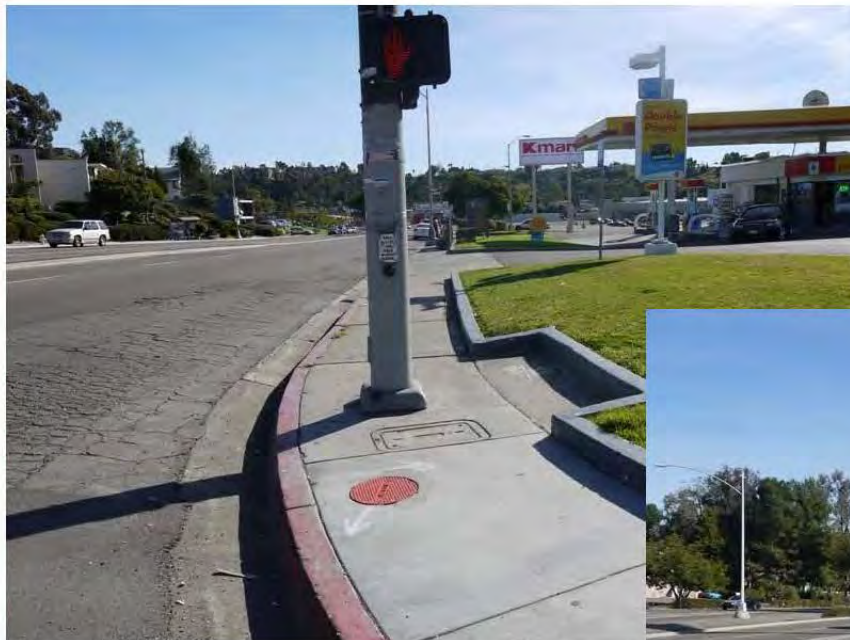
Engineering Study



- Traffic forecasts for 2030
- Capacity Analysis
- Inventory of Existing Conditions
- ADA Upgrades
- Preliminary Designs

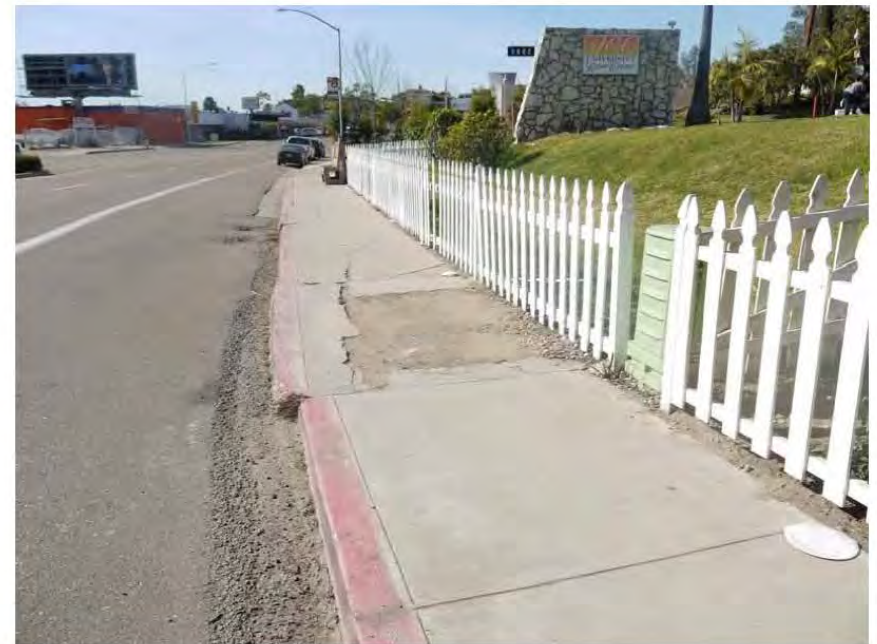


54th Street to 58th Street



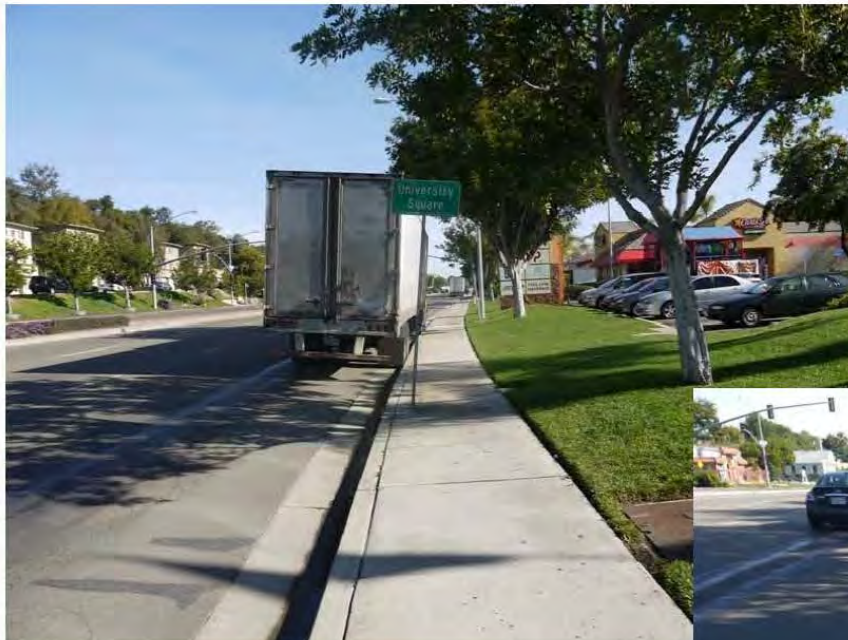


54th Street to 58th Street





58th Street to 60th Street





College Avenue to Aragon Drive





Aragon Drive to 68th Street



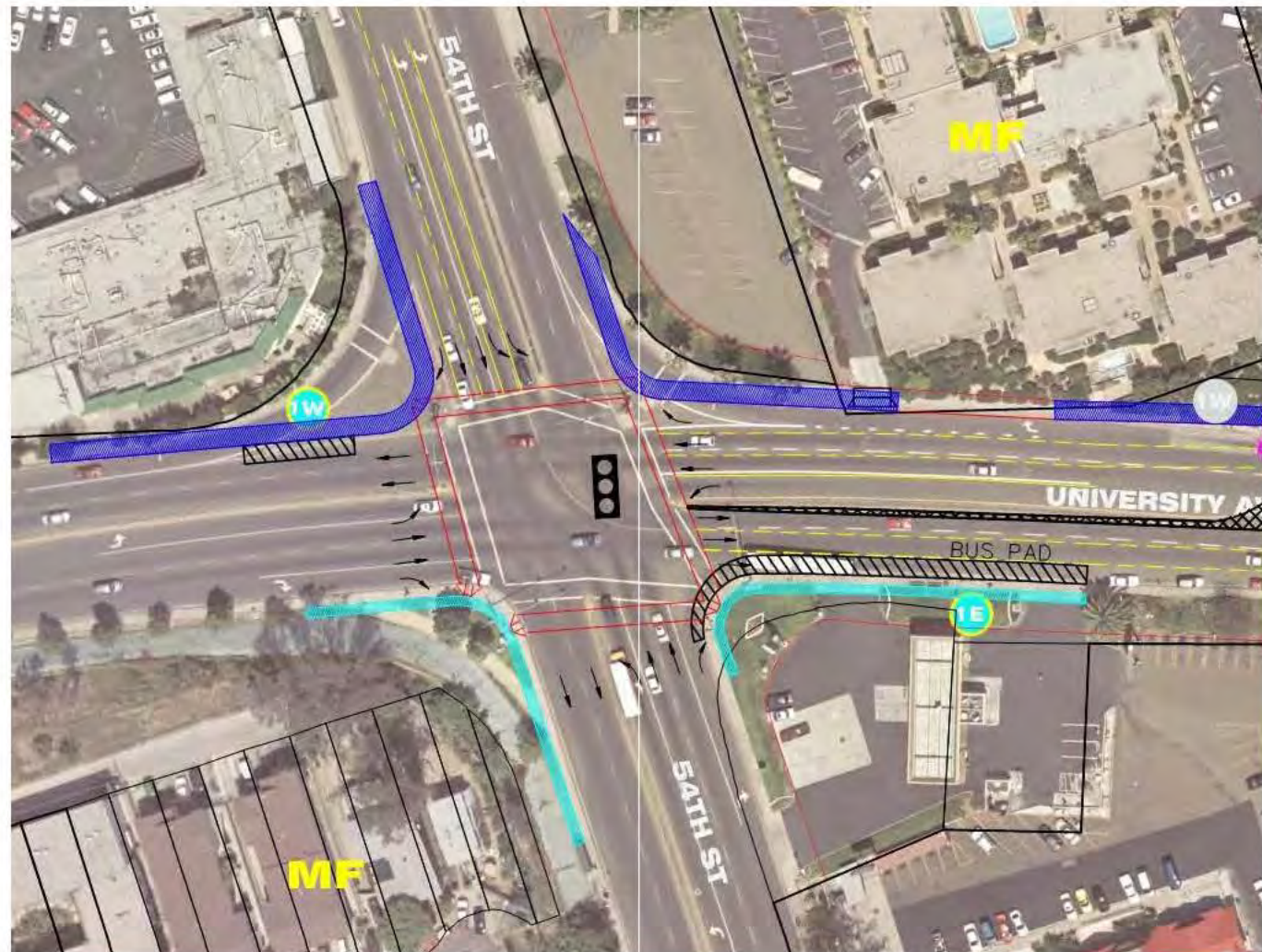


54th Street – Free Right Turns



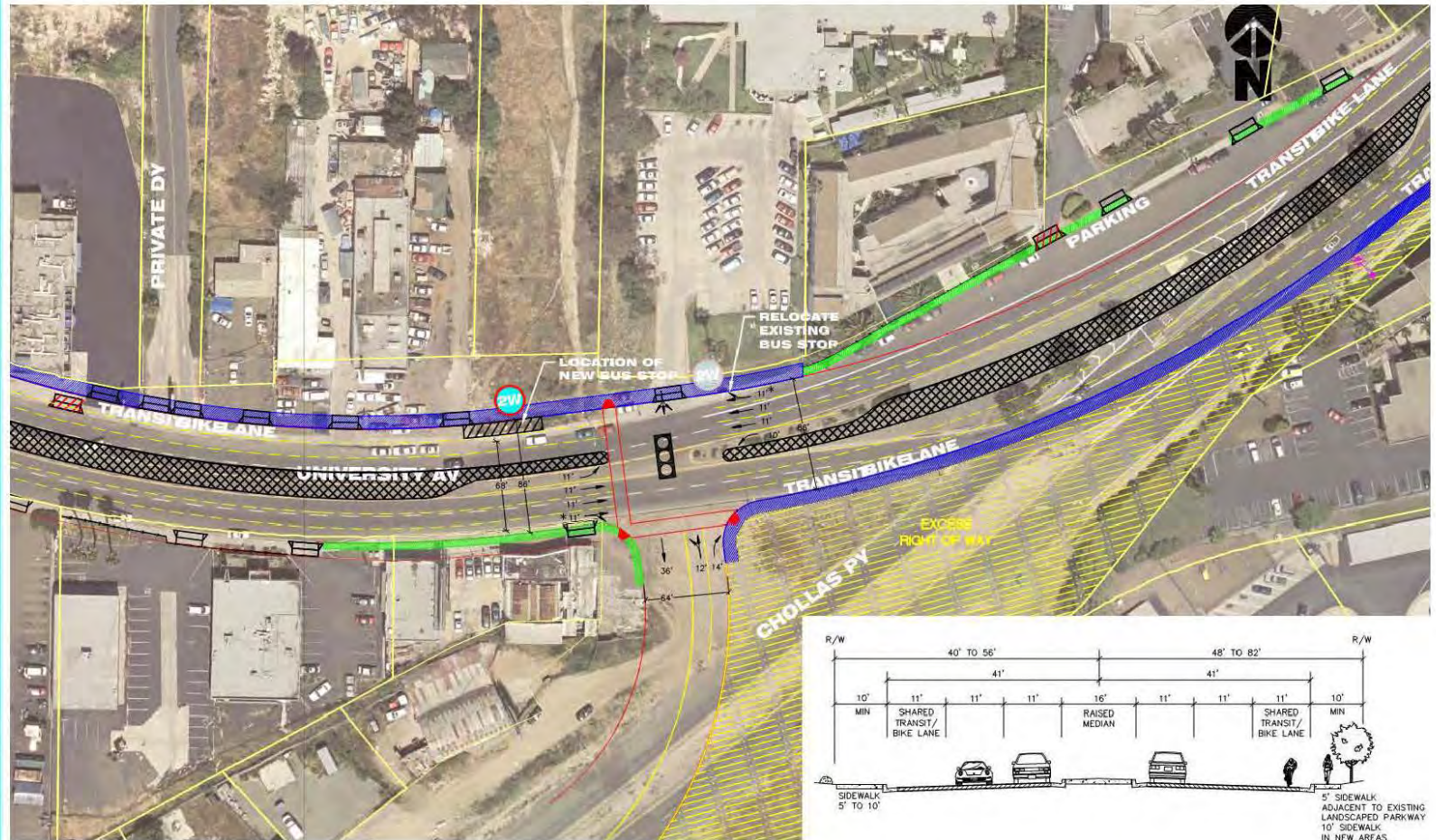


54th and University Avenue





Realign Chollas Parkway Intersection



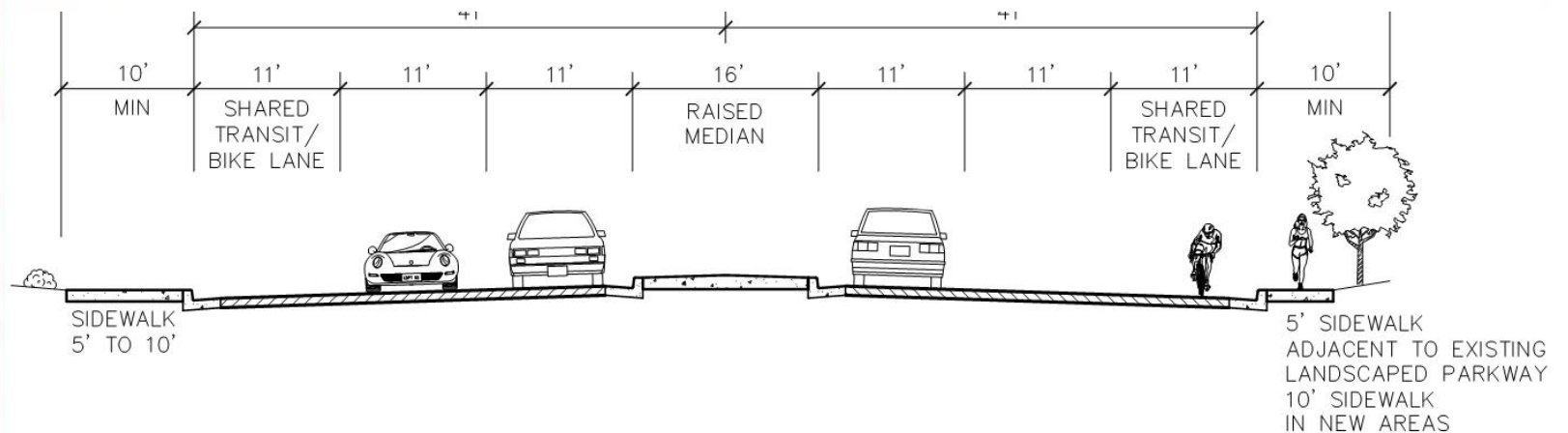


54th Street to 58th Street





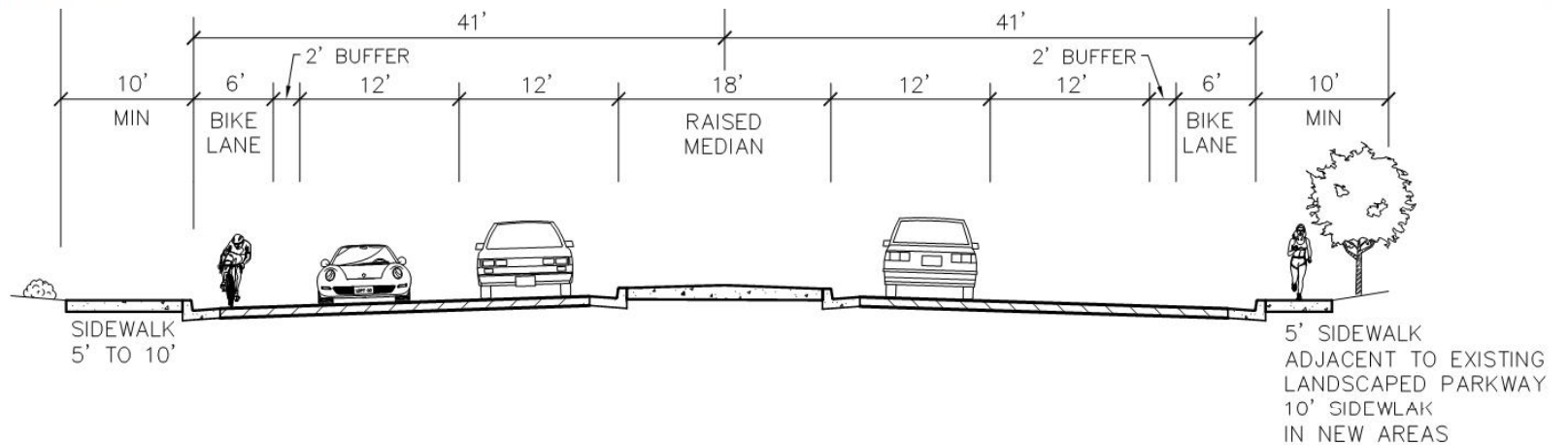
54th Street to 58th Street



Options 1 & 3



54th Street to 58th Street



Option 2

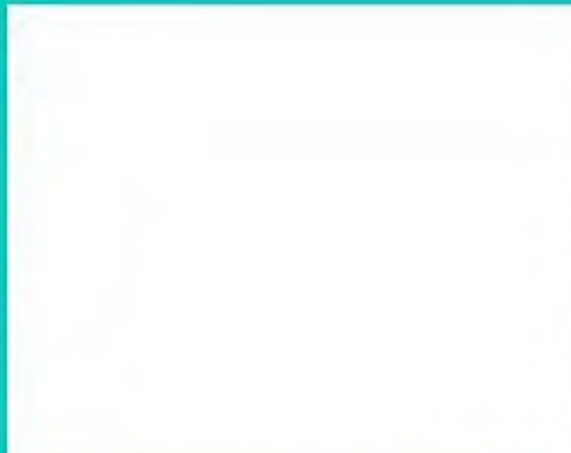


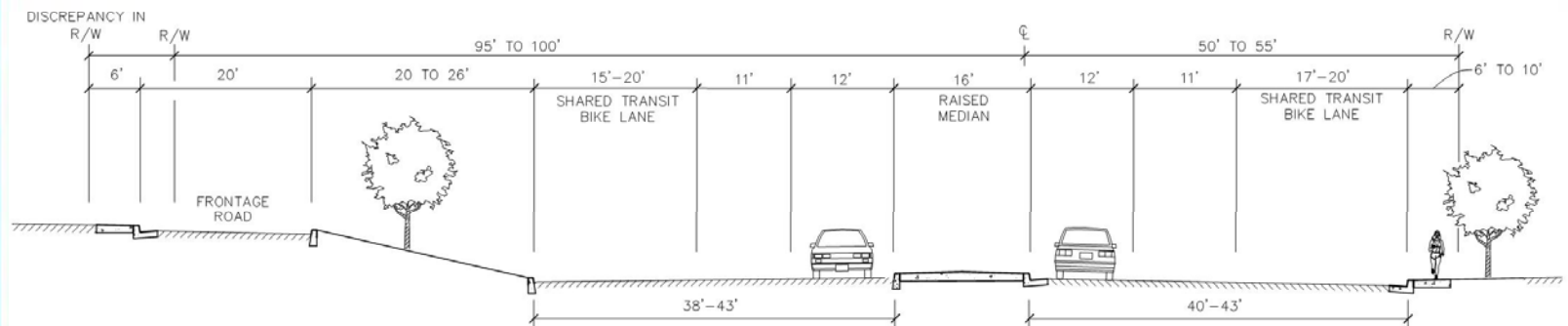
Buffered Bike Lane





58th Street to College Avenue

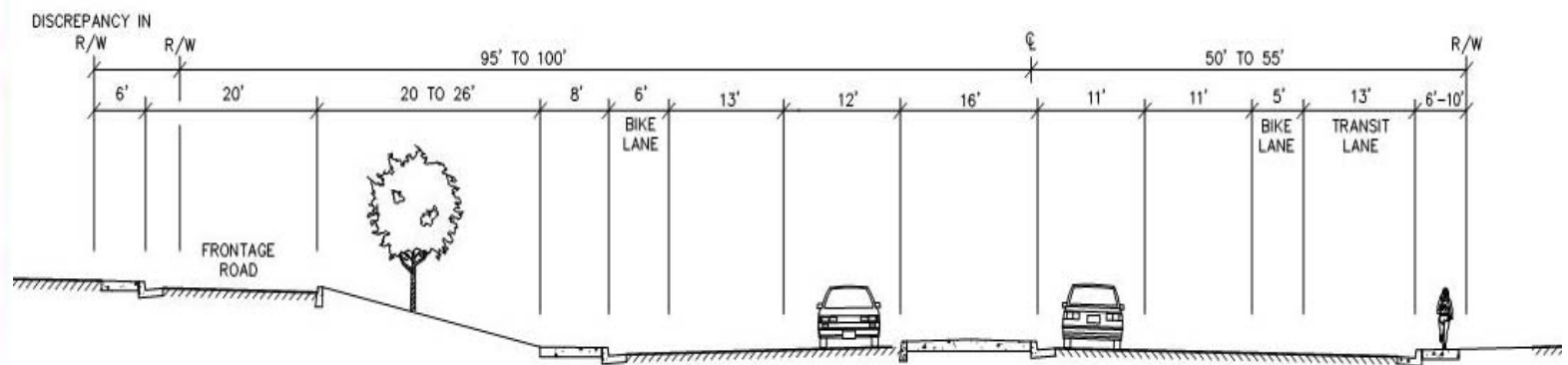




Options 1 & 3



58th Street to 60th Street



Option 2

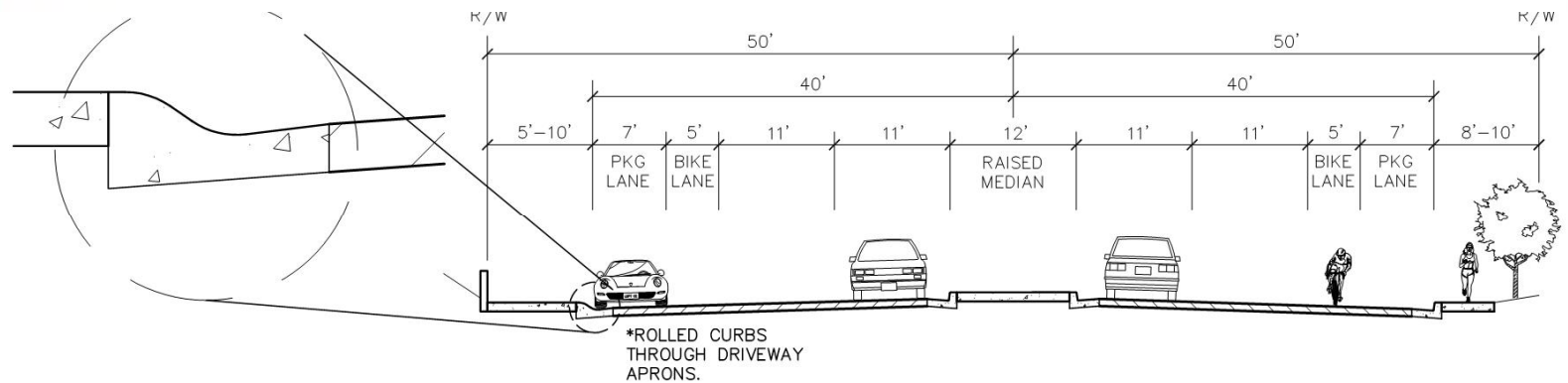


College Avenue to Aragon





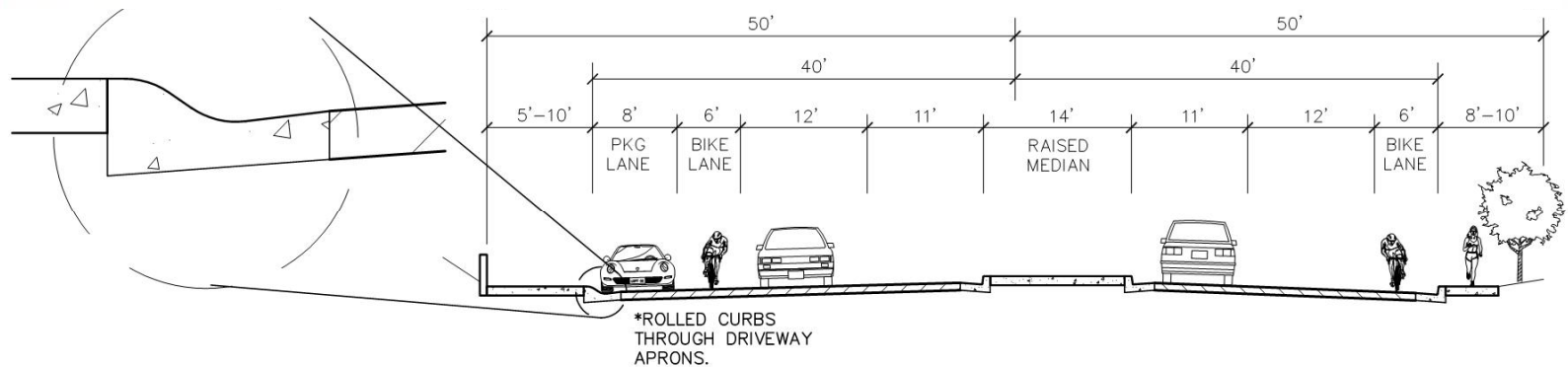
College Avenue to Aragon Drive



Option 1



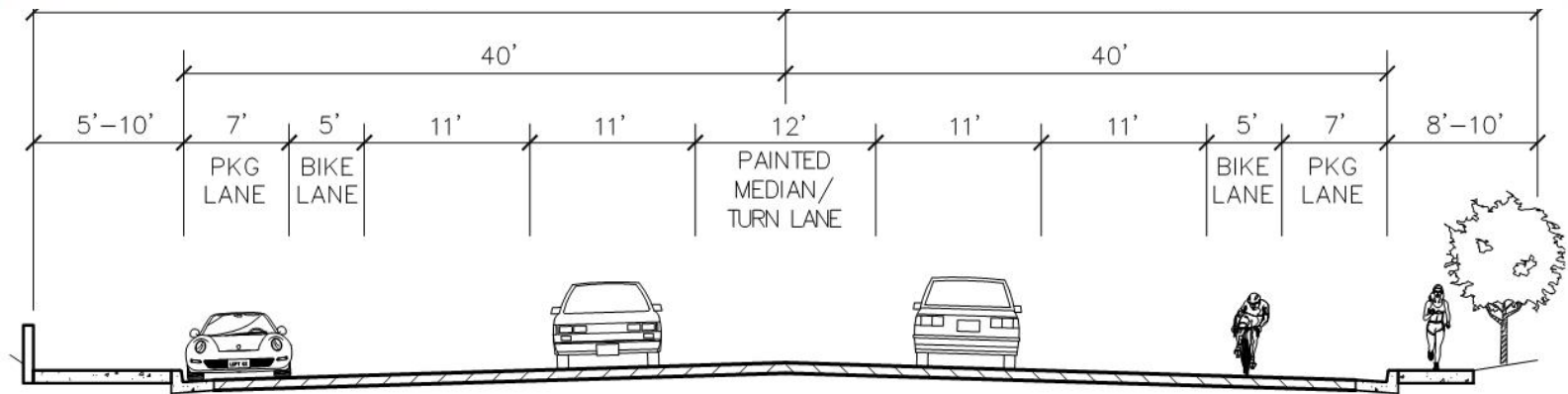
College Avenue to Aragon Drive



Option 2



College Avenue to Aragon Drive



Option 3

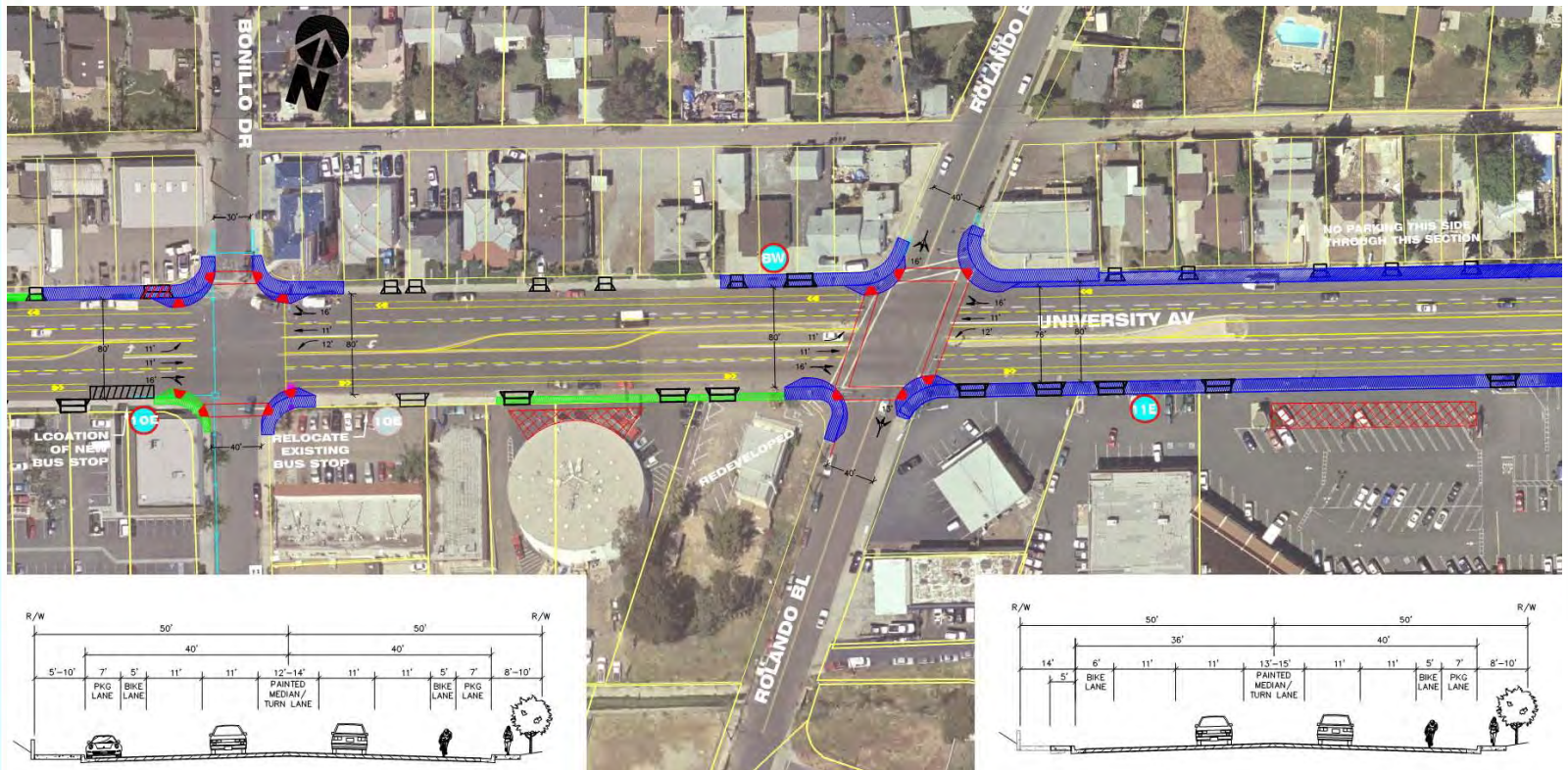


Rolando – Option 3



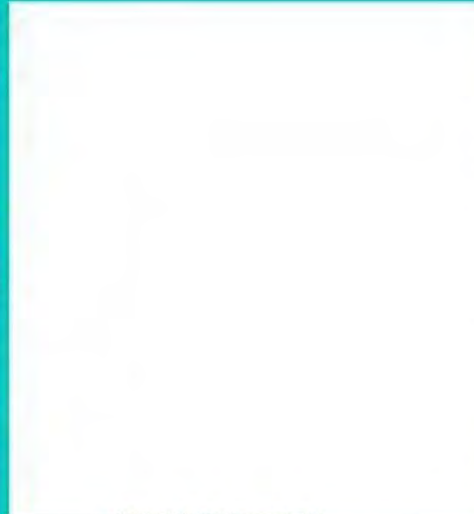


Rolando – Option 3



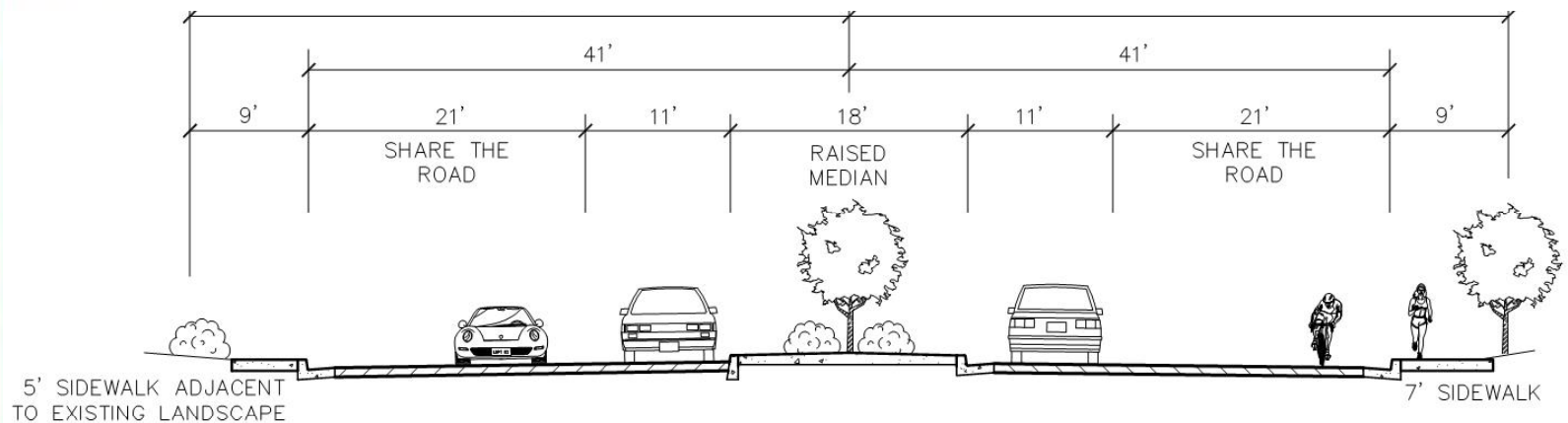


Aragon Drive to 69th Street





Aragon Drive to 68th Street



Option 1

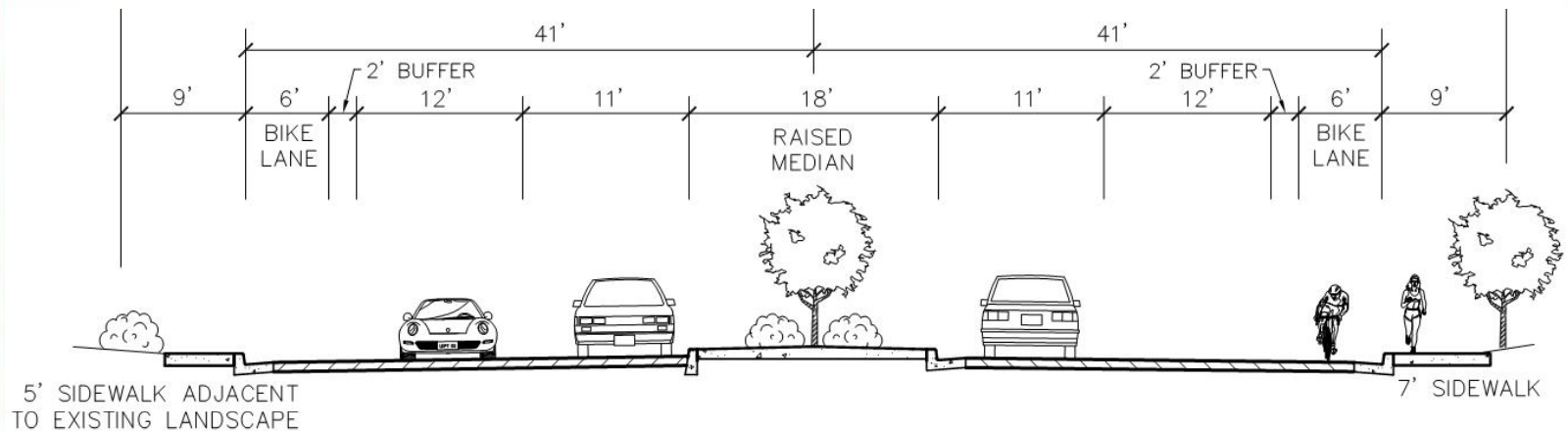


Sharrow





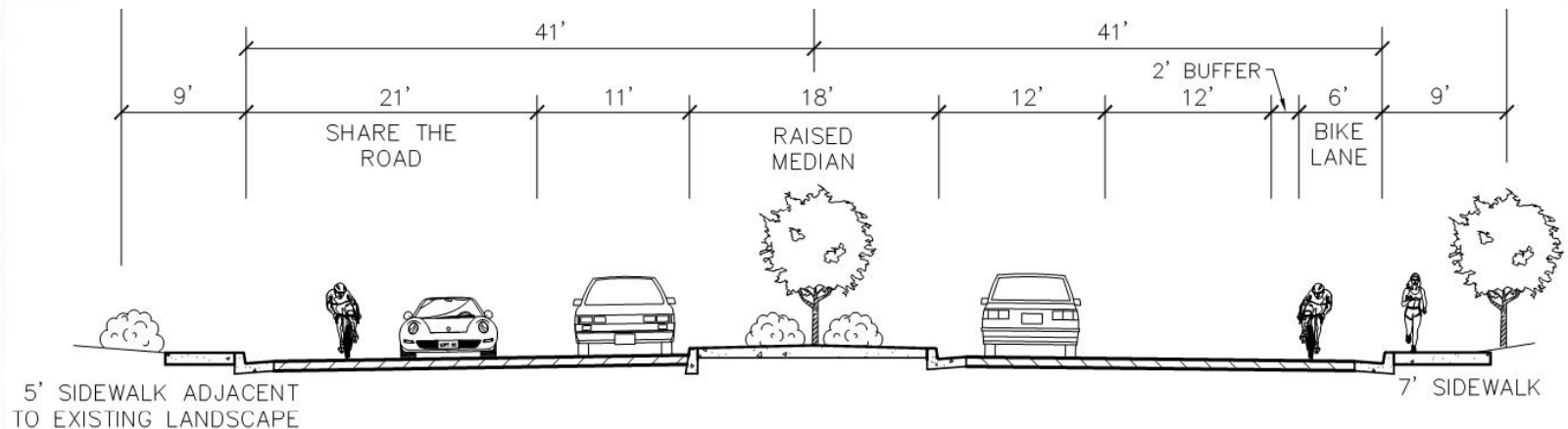
Aragon Drive to 68th Street



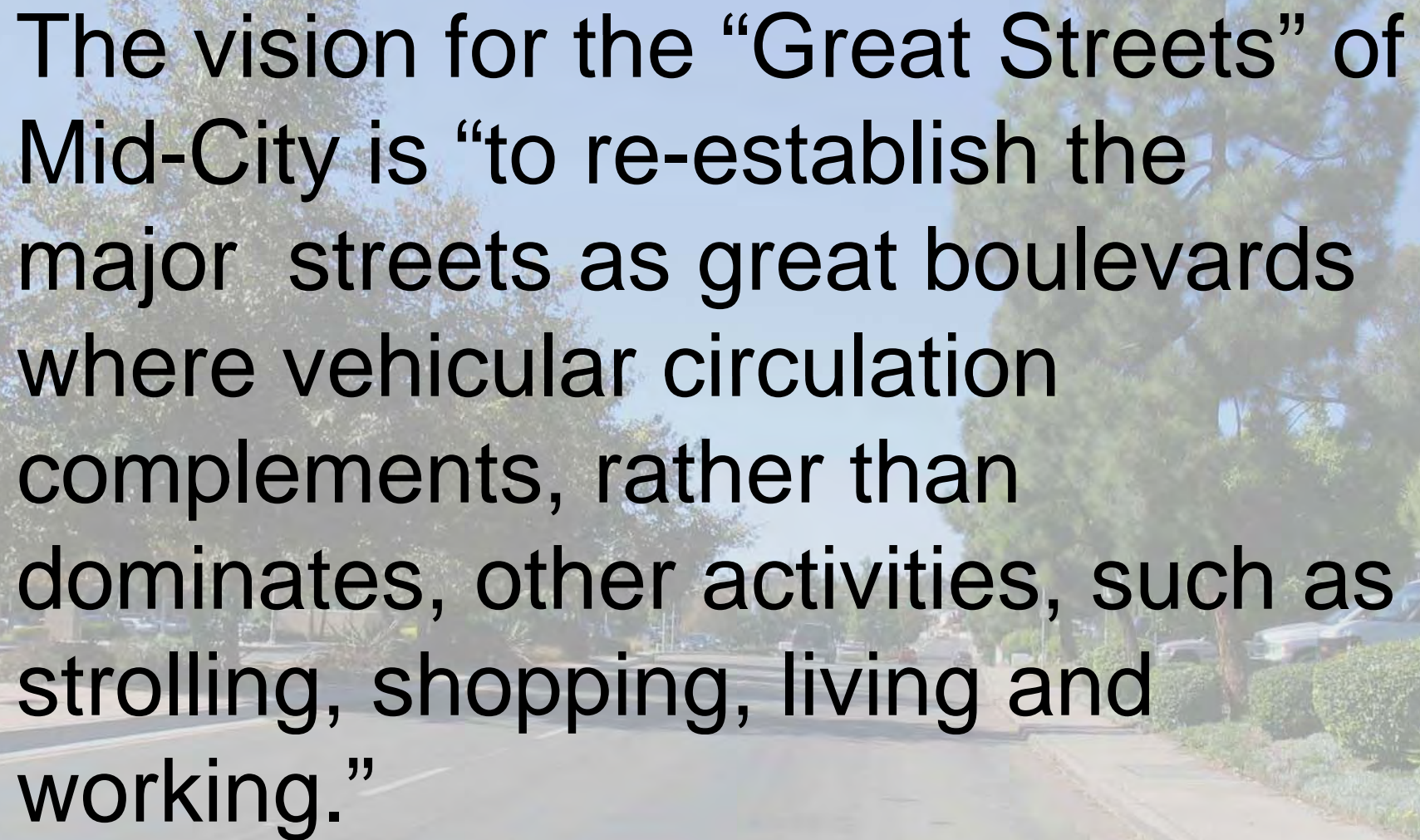
Option 2



Aragon Drive to 68th Street

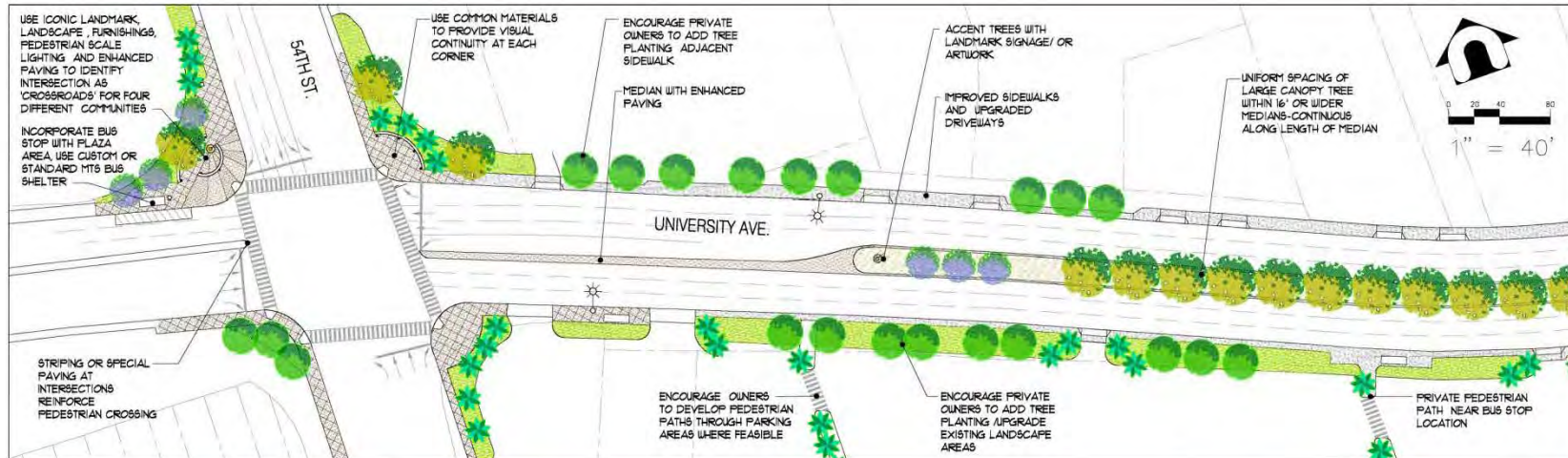


Option 3



The vision for the “Great Streets” of Mid-City is “to re-establish the major streets as great boulevards where vehicular circulation complements, rather than dominates, other activities, such as strolling, shopping, living and working.”

54th and University Crossroads and Median



Darnell
& ASSOCIATES, INC.
TRANSPORTATION PLANNING
& TRAFFIC ENGINEERING

PARTERRE
SITE PLANNING
URBAN DESIGN
LANDSCAPE ARCHITECTURE

UNIVERSITY AVENUE MOBILITY STUDY LANDSCAPE CONCEPTS

54th STREET 'CROSSROAD' /
UNIVERSITY AVENUE MEDIAN



USE ICONIC LANDMARK,
LANDSCAPE, FURNISHINGS,
PEDESTRIAN SCALE
LIGHTING AND ENHANCED
PAVING TO IDENTIFY
INTERSECTION AS
'CROSSROADS' FOR FOUR
DIFFERENT COMMUNITIES

INCORPORATE BUS
STOP WITH PLAZA
AREA, USE CUSTOM OR
STANDARD MTS BUS
SHELTER

USE COMMON MATERIALS
TO PROVIDE VISUAL
CONTINUITY AT EACH
CORNER

54TH ST.

STRIPING OR SPECIAL
PAVING AT
INTERSECTIONS
REINFORCE
PEDESTRIAN CROSSING





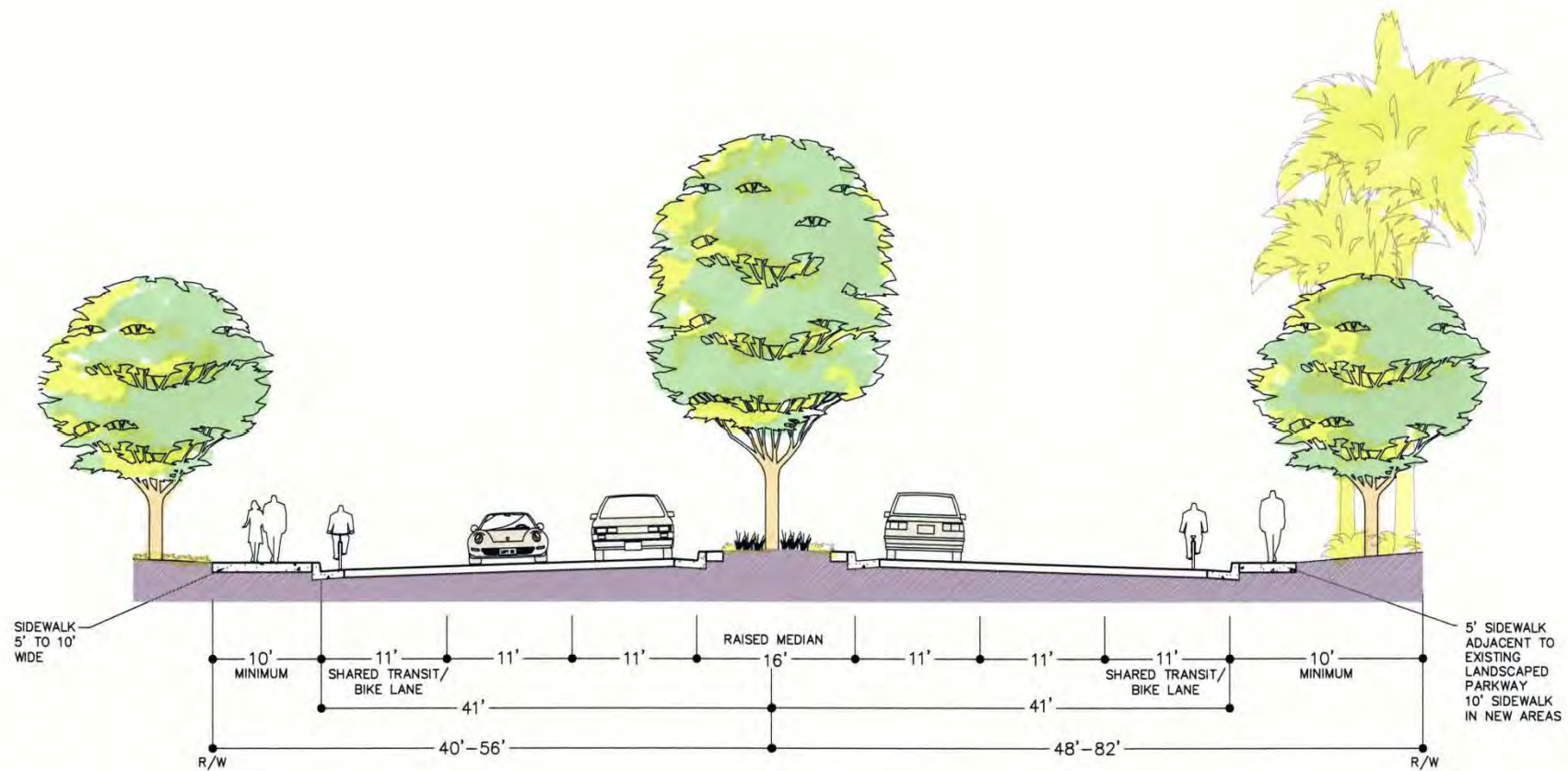
Crossroad Elements



Iconic Landmarks



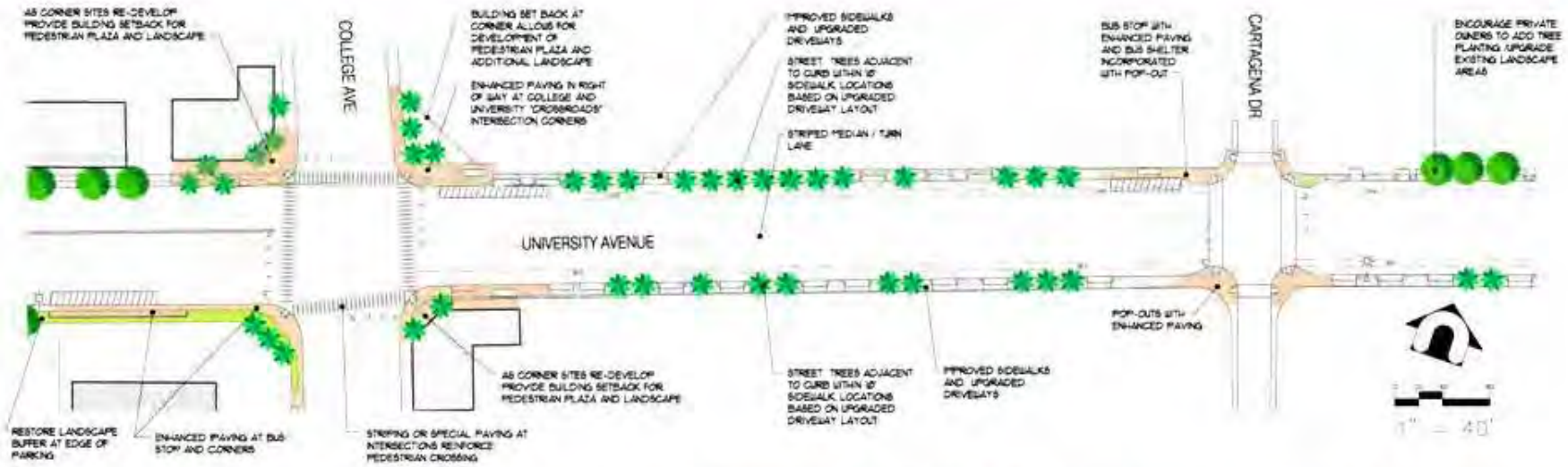
54th to Chollas Parkway-Option 1







College and University Crossroads and Cartagena Pop-outs



Darnell
& ASSOCIATES, INC.
TECHNOLOGY INTEGRATED PLANNING
A TRUSTED SOLUTION

PARTERRE
ART PLANNING
URBAN DESIGN
LANDSCAPE ARCHITECTURE

UNIVERSITY AVENUE MOBILITY STUDY LANDSCAPE CONCEPTS

COLLEGE AVENUE "CROSSROADS" /
CARTAGENA DRIVE POP-OUTS

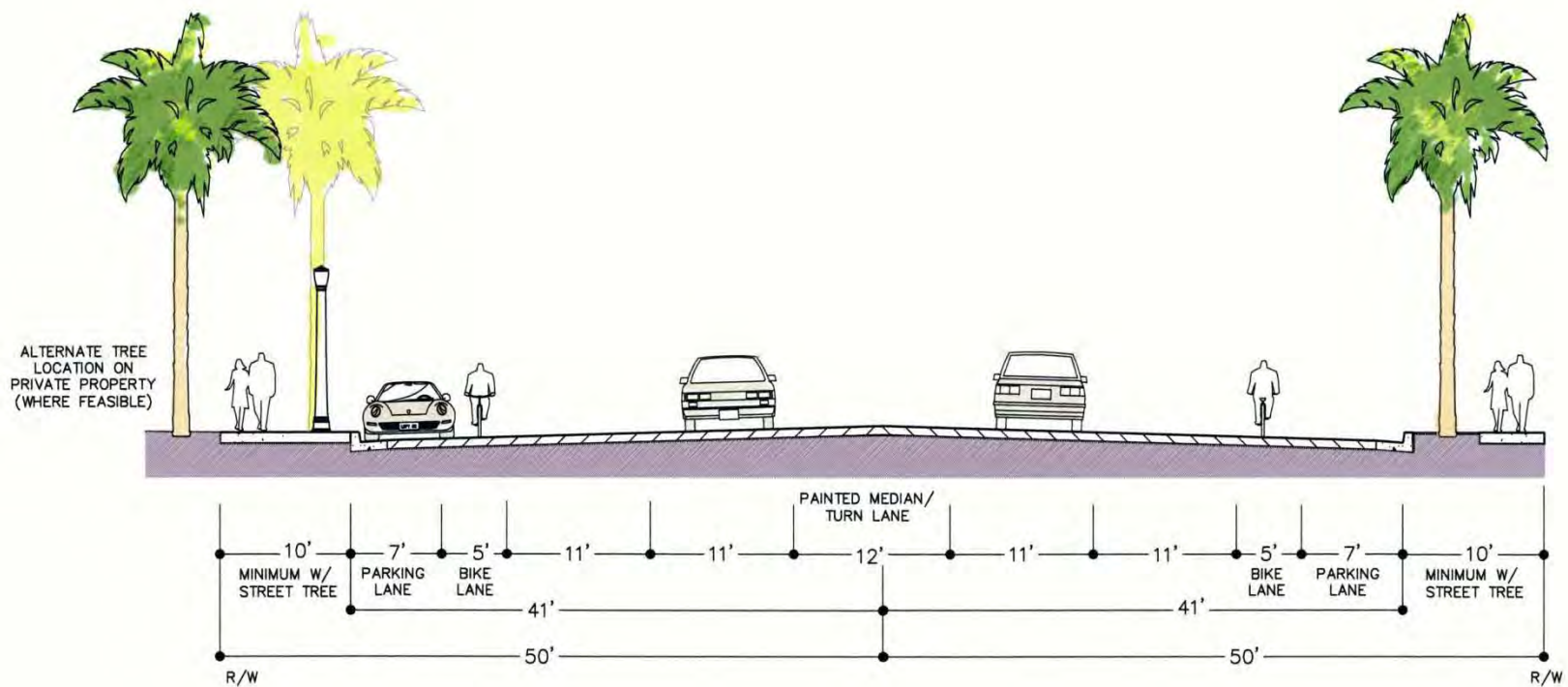








College to Cartagena-striped median/turn lane

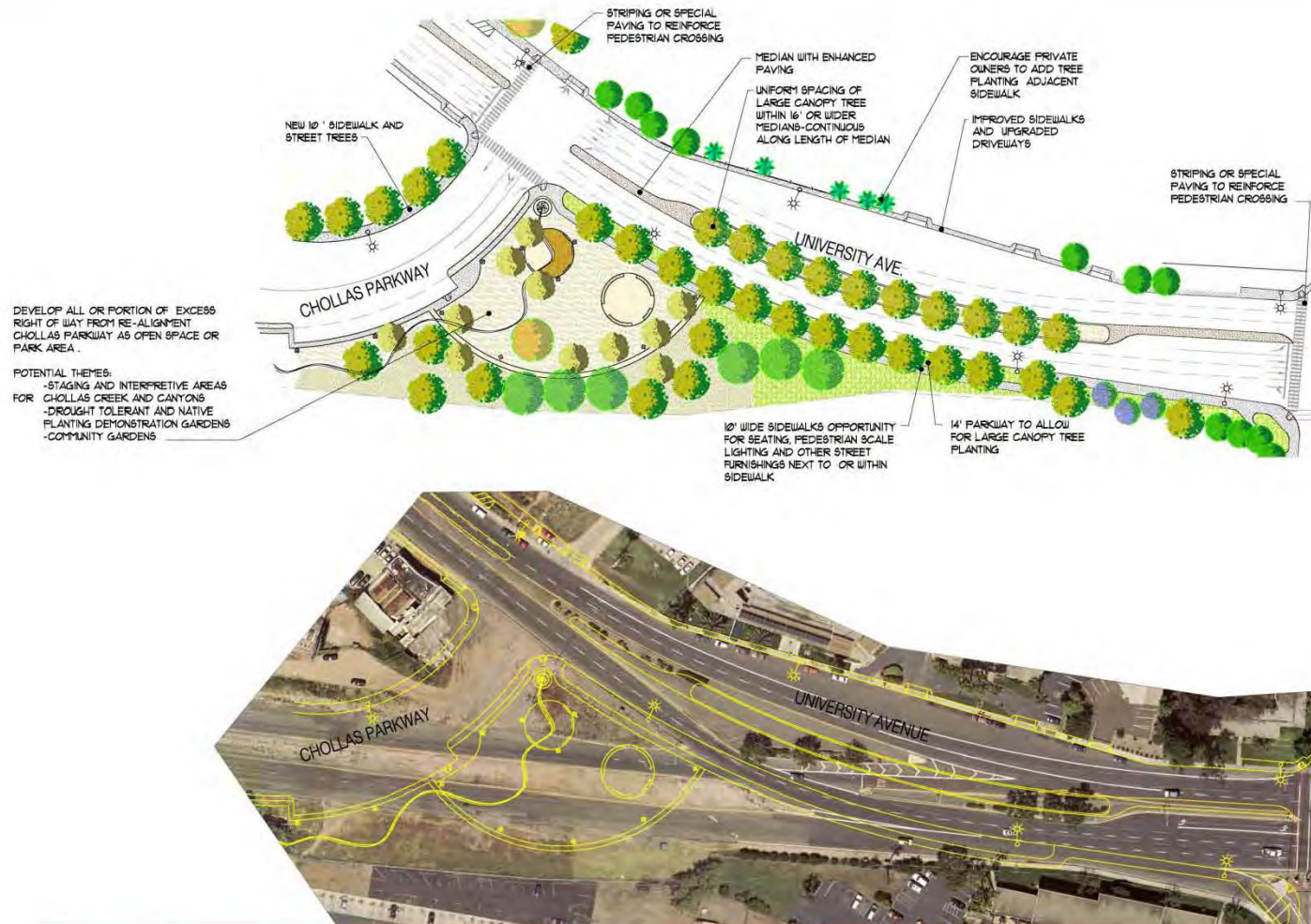








Chollas Parkway Re-alignment



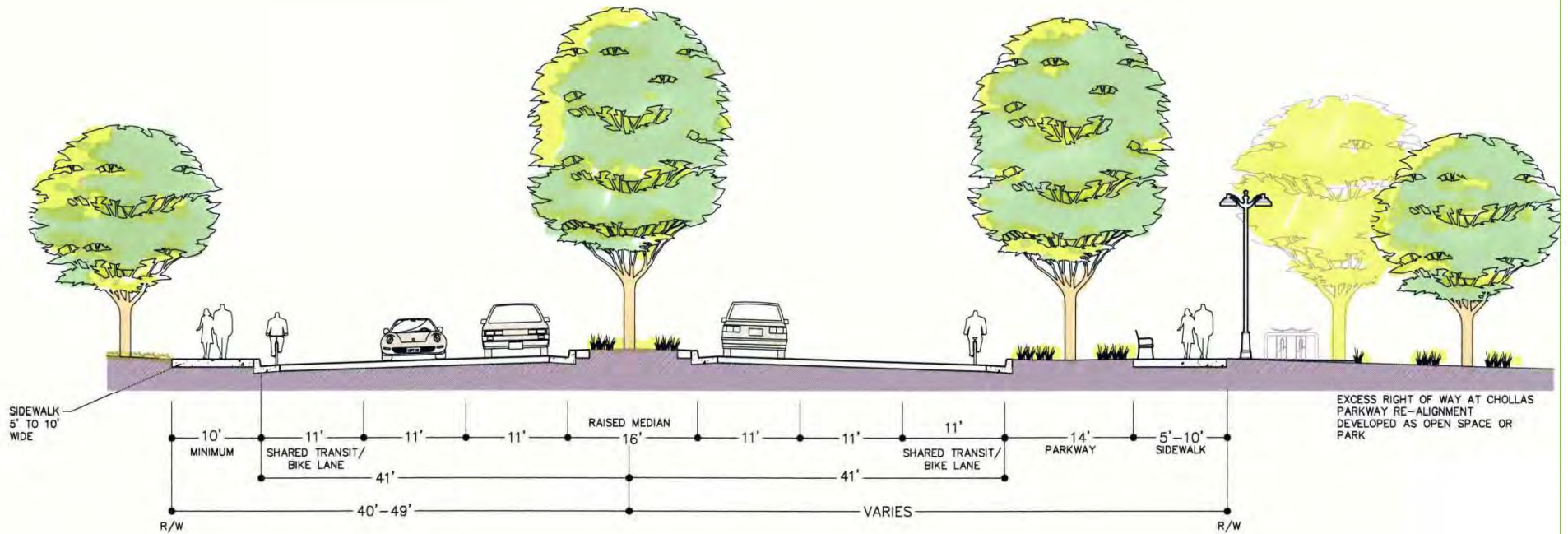
Darnell
& ASSOCIATES, INC.
TRANSPORTATION PLANNING
& TRAFFIC ENGINEERING

PARTERRE
SITE PLANNING
URBAN DESIGN
LANDSCAPE ARCHITECTURE

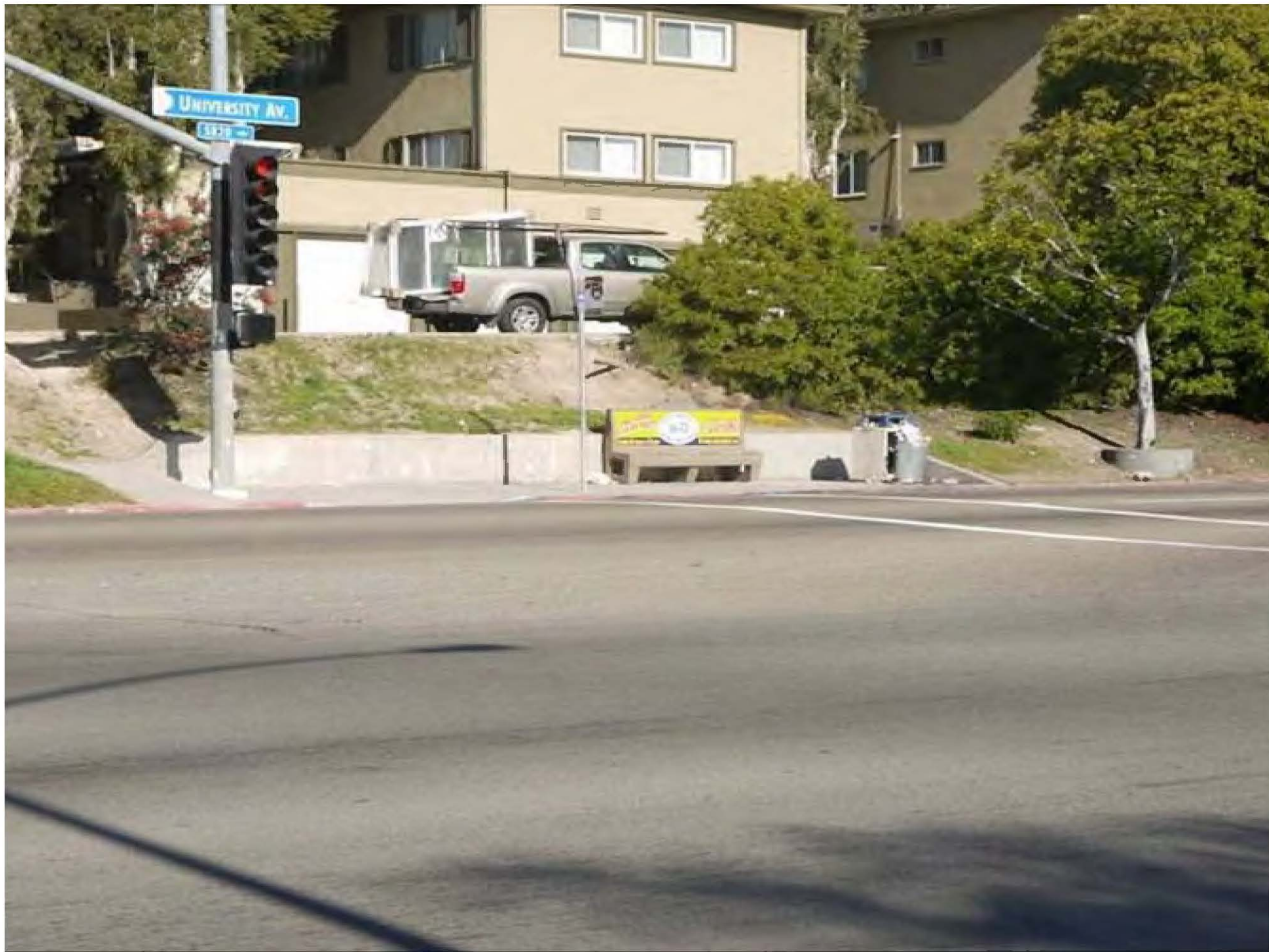
**UNIVERSITY AVENUE
MOBILITY STUDY
LANDSCAPE CONCEPTS**

CHOLLAS PARKWAY

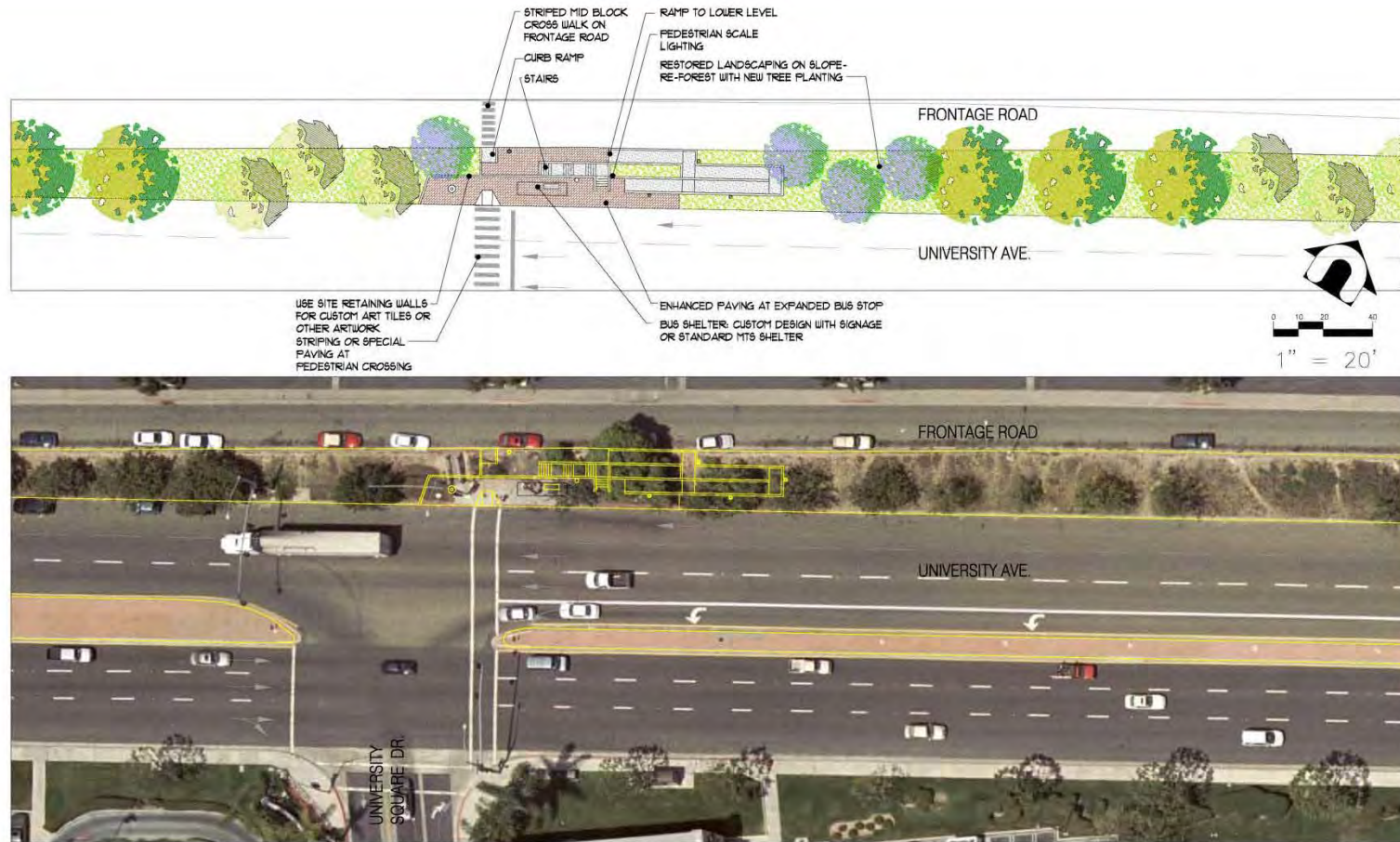
Chollas Parkway Open Space







Bus Stop at University Square

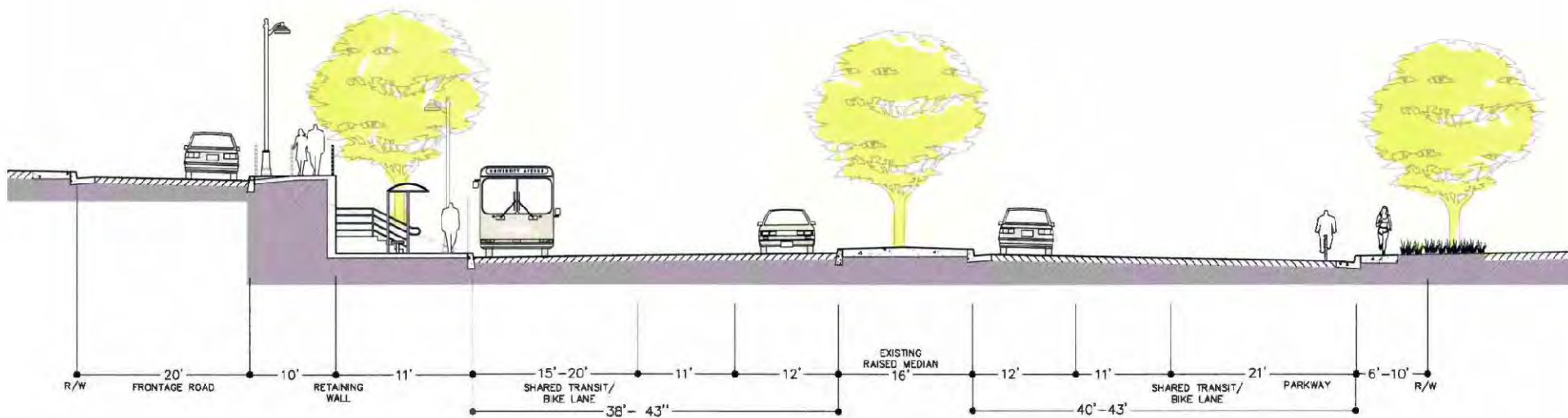


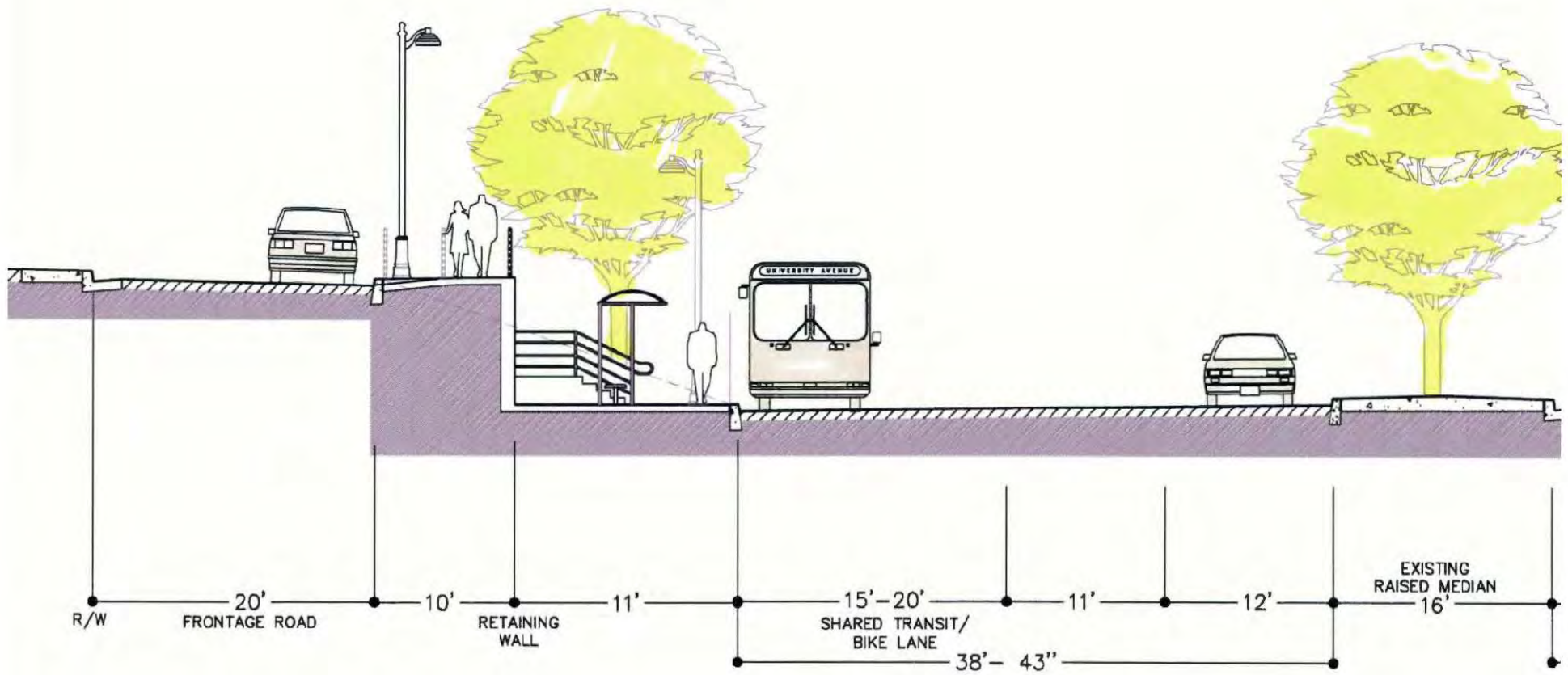
Darnell
& ASSOCIATES, INC.
TRANSPORTATION PLANNING
& TRAFFIC ENGINEERING

PARTERRE
SITE PLANNING
URBAN DESIGN
LANDSCAPE ARCHITECTURE

**UNIVERSITY AVENUE
MOBILITY STUDY
LANDSCAPE CONCEPTS**

BUS STOP AT UNIVERSITY SQUARE





Fletcher Cove Mosaic

Design by: Betsy Kopshina Schulz











University Avenue Mobility Study

Measures of Effectiveness

- Good
- Better
- Best





University Avenue Mobility Study



Break Out Session

- Parking Bike Lanes
- Wider Sidewalks
- Shared Bike/Transit/Vehicle
- Transit Access
- Street Parking
- Raised Medians – Center Turn Lanes
- Pop Outs at Curbs
- Landscaping and other Custom Improvements
- Maintenance Districts



University Avenue Mobility



- The End