



THE CITY OF SAN DIEGO
General Plan
Land Use and Community Planning Element

The General Plan Land Use Map depicts generalized land use within the City of San Diego. The information is a composite of the land use maps adopted for each of the community, specific, precise, subarea and park plan areas. It is intended as a representation of the distribution of land uses throughout the city; although consistent with, it is not a replacement or substitution for community or other adopted land use plans. Please refer to the relevant community or other adopted land use plan documents for more detail regarding planned land uses and land use planning proposals.

Revised Dec 4, 2018

Figure LU-2
General Plan
Land Use
and Street System

Street System

- Freeways
- Prime Arterials
- Major Arterials
- Collectors (local & rural)

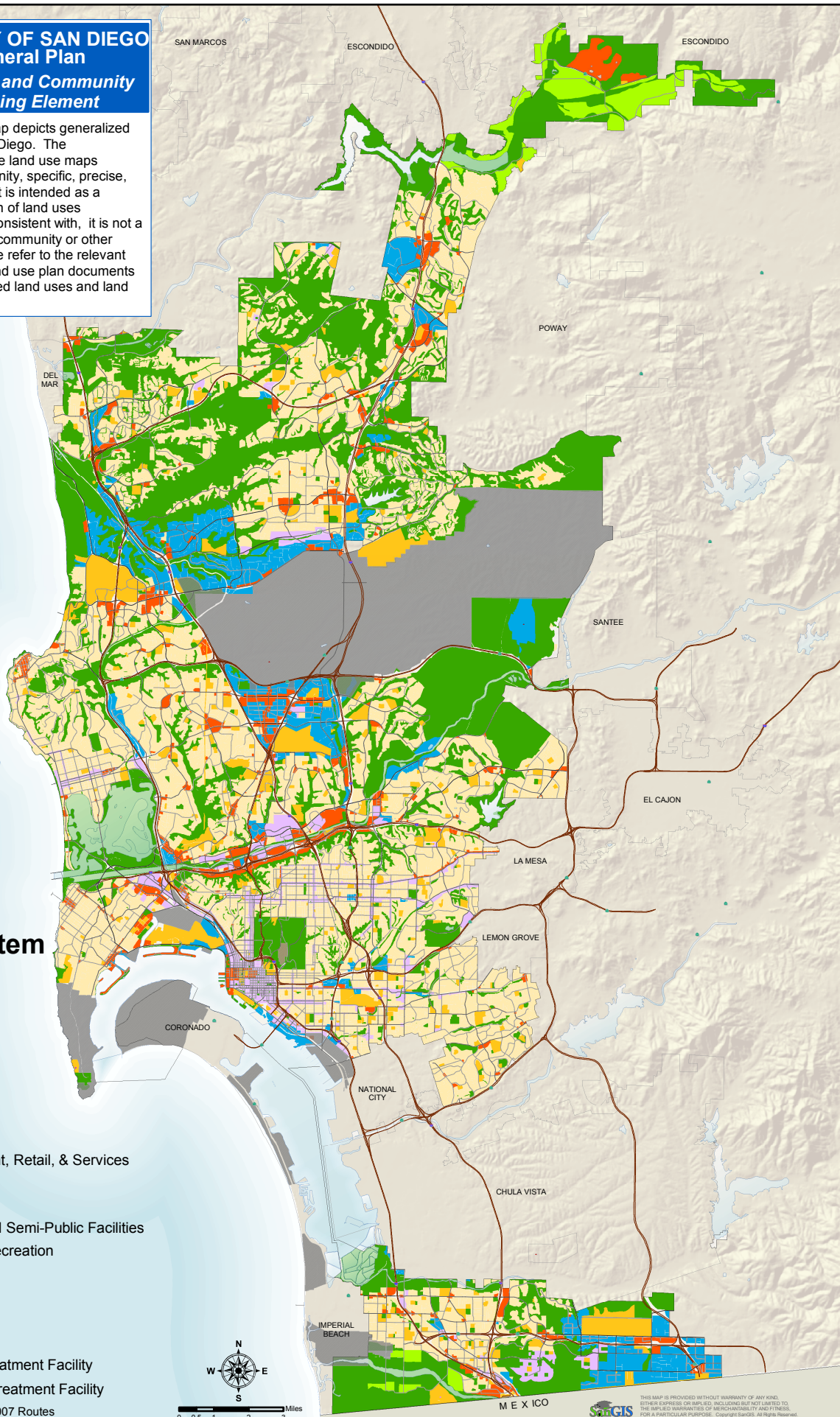
General Plan Land Use

- Residential
- Commercial Employment, Retail, & Services
- Multiple Use
- Industrial Employment
- Institutional & Public and Semi-Public Facilities
- Park, Open Space, & Recreation
- Agriculture

Other Features

- Military Use
- Active Landfill
- Existing Wastewater Treatment Facility
- Proposed Wastewater Treatment Facility

Source: SANDAG 2007 RTP; MTS 2007 Routes



THIS MAP IS PROVIDED WITHOUT WARRANTY OF ANY KIND, EITHER EXPRESS OR IMPLIED, INCLUDING BUT NOT LIMITED TO, THE IMPLIED WARRANTIES OF MERCHANTABILITY AND FITNESS, FOR A PARTICULAR PURPOSE. Copyright (c) 2018. All Rights Reserved.