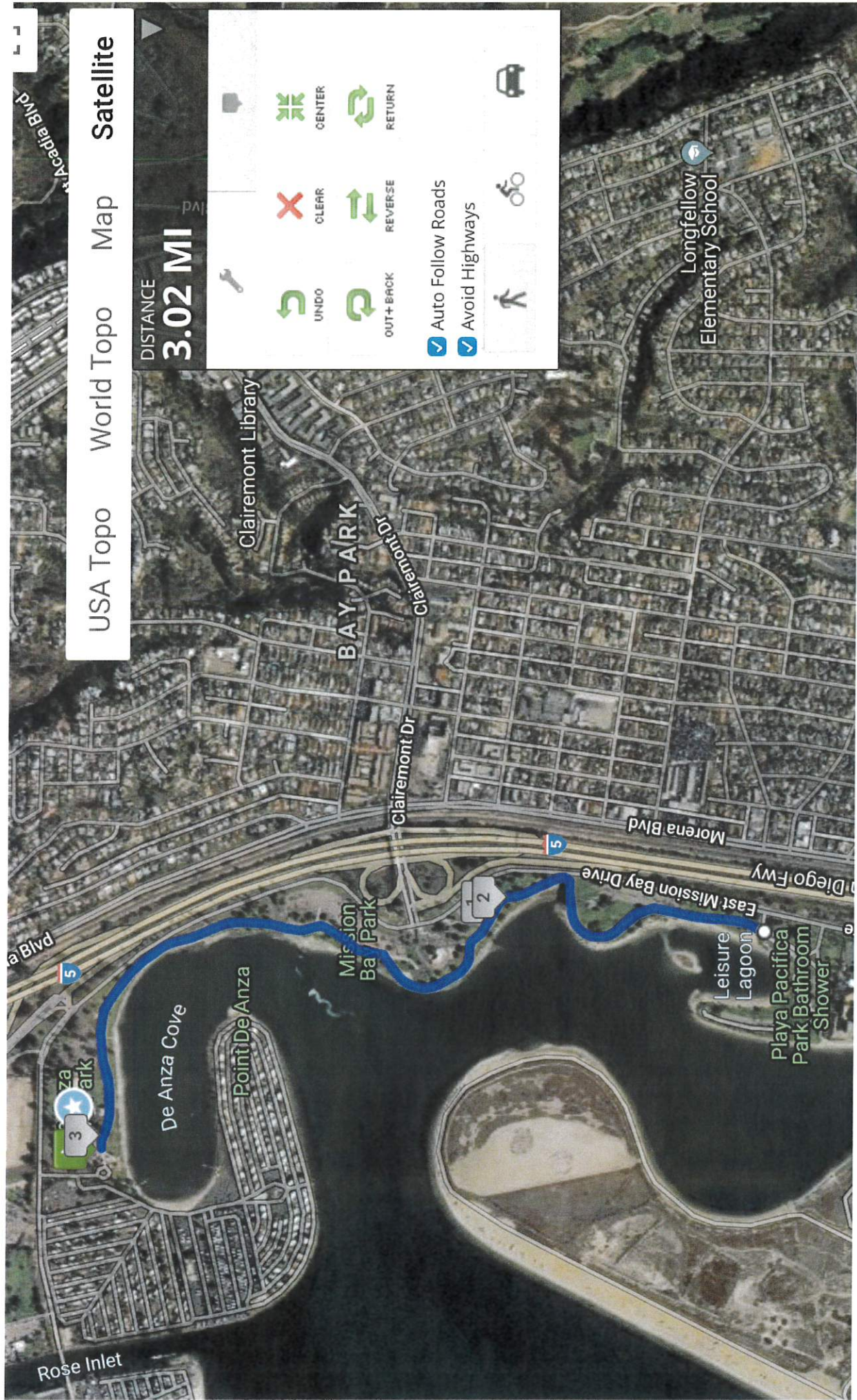


MISSION BAY PARK SPECIAL EVENT NARRATIVE AND IMPACT

Presentation to Mission Bay Park Committee will be limited to 5 minutes

***Please attach a site map**

1. Name of Event: **Mission Possible: San Diego Walk to End Homelessness**
2. Type of Event: **Homelessness Awareness 5K Walk and Pavilion**
3. When, Day and Date: **Sunday, October 27**
4. Dates: Load In: **Sunday, October 27**
5. Times?
 - Load in: **5-6:30am**
 - Event: **7:30-9am**
 - Load out: **11-12noon**
6. Location: Road Closure: **Not applicable**
7. Parking Lot Closure: **Not needed**
8. Parking Plan: Shuttle Plan: **Not needed**
9. Traffic Plan: **Not applicable**
10. Attendance:
 - Estimated Participants: **200**
 - Estimated Spectatorship: **100**
11. P.A. System: **Yes**
12. Amplified Music: **Yes**
 - Time frame: **7-10am**
13. Other Prolonged Noise Impacts: **No**
14. Day and Time of Sound Checks: **October 27 at 7am**
15. Do you plan to apply for an Alcohol Permit: **No**
16. Do you plan on selling Alcohol: **No**
17. Do you plan on serving Alcohol: **No**
18. Time frame for Alcohol Sales/Service: **Not Applicable**
19. Any Other Special Events of more than 500 people occurring concurrently: **No**
20. Other unique event features not covered above: **Small pavilion with non-profit service providers sharing information about San Diego Homelessness and how to help our community**



USA Topo World Topo Map Satellite

DISTANCE
3.02 MI



Auto Follow Roads

Avoid Highways



Rose Inlet

De Anza Cove

Point De Anza

Mission Bay Park

Clairemont Library

BAY PARK

Clairemont Dr

Clairemont Dr

Morena Blvd

East Mission Bay Drive

Leisure Lagoon

Playa Pacifica Park
Bathroom
Shower

Longfellow Elementary School



3



2

5

2

5

Walk to End Homelessness
5K Event Pavilion

De Anza
Cove Park

Public Restrooms on Site

P Parking Lot

Walk
Starting/
Finish Line

3000 North
Mission Bay Drive

De Anza Rd

De Anza Rd



