

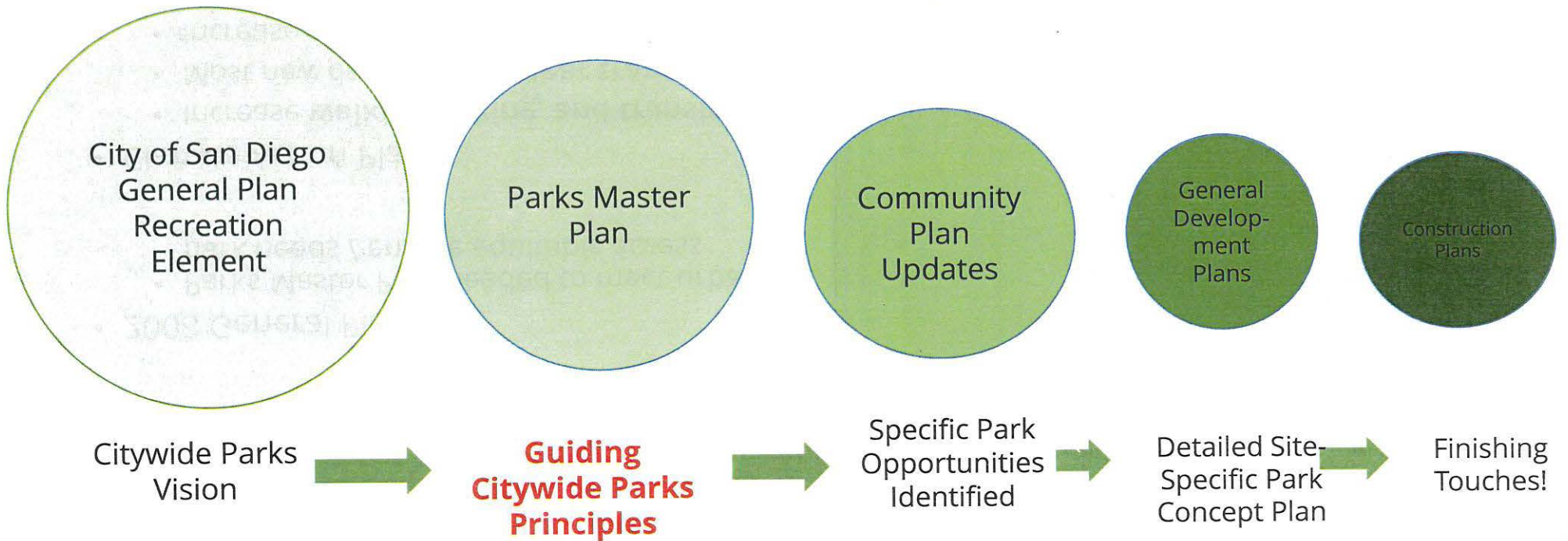
Complete Communities: Play Everywhere

Parks Master Plan / General Plan Recreation Element Amendment

Mission Bay Park Committee
June 2, 2020

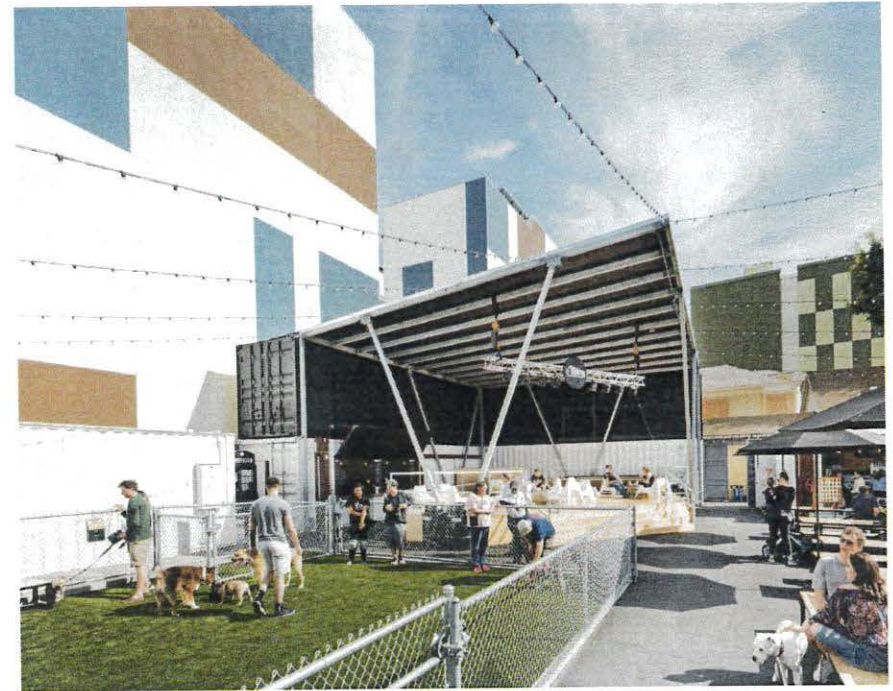


Park Planning Context



Parks Master Plan Vision

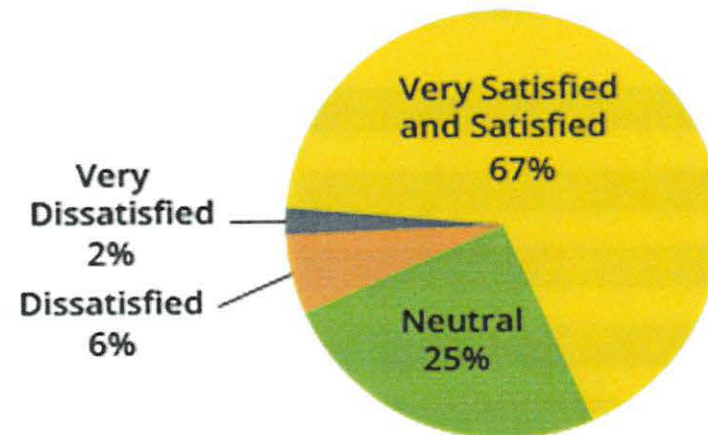
- **Interconnected** Citywide park system
- **Thriving recreational spaces** close to transit
- **New recreational** experiences
- **Equitable** park investments where needed most
- Easy **walk, bicycle, and transit** access
- Opportunities for everyone to **play outside** and make social connections



What we learned

- 67% of residents **satisfied or very satisfied** with the City's parks
- Priorities include:
 - small neighborhood parks
 - open space and trails
 - beaches and shoreline parks
 - fitness and wellness programs
 - senior programs
 - nature programming

Satisfaction with Facilities & Programs



Just over two-thirds (67%) of residents were satisfied or very satisfied with the City's Parks and Recreation Facilities/Programs

How we plan now

Current General Plan: Acreage-based standard on community plan area basis. Existing 2.8 acres per 1,000 residents standard

Challenges

- Limits comprehensive planning for an interconnected Citywide parks system
- Urbanized areas lack available land
- Funding and staffing limits
- Can create further inequities in the distribution of parks throughout the City



Parks Master Plan Equity Goals

Climate Equity Index

- Prioritizes investments and funding in communities of concern

Park Condition Index

- Highlights current condition and maintenance needs

Park Demand

- Analyzes local populations and communities to ensure park needs are met



New Value-Based Park Standard

A new way to plan a meaningful, successful, and interconnected park system

- Value Standard – 12 points per 1,000 population
- Value determined based on features related to:
 - Carrying capacity
 - Recreation opportunities
 - Access
 - Activations
- Acreage is a factor – but not the only factor – in determining recreational value



Children's Parks Case Study - Existing



Existing Recreation Point Value		
Key	Amenities	Points
	Mini Park	2
A	Public Art/Placemaking Elements	1
B	Linkages: CI 1 Bike or Cycle Track	4
C	Integrated With Transit (500 ft)	3
D	Connection to Public/Civic Use	3
Total		13
Population Served		1,100

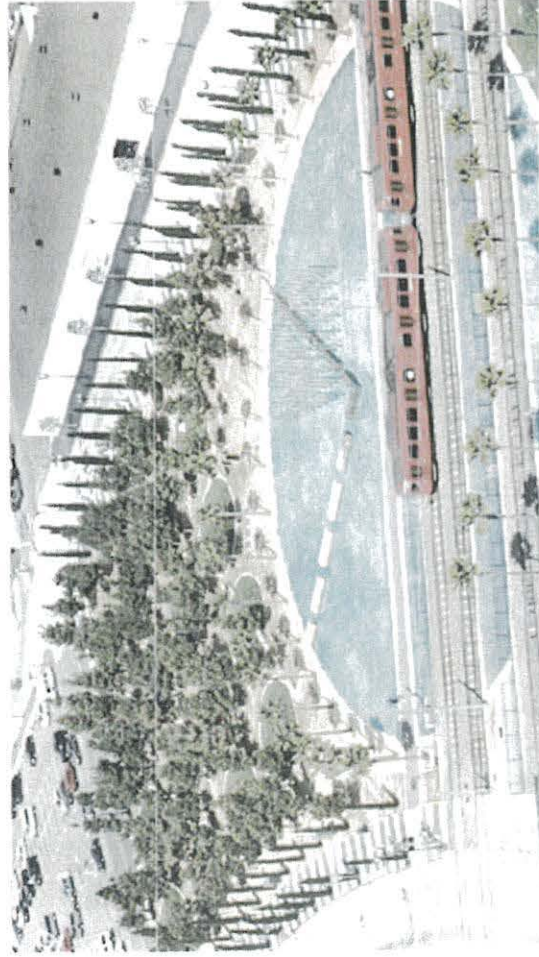
SEE EXISTING PLAN VIEW

Children's Park is a 1.7-acre downtown mini-park with a forest of pine trees, and a small pond.

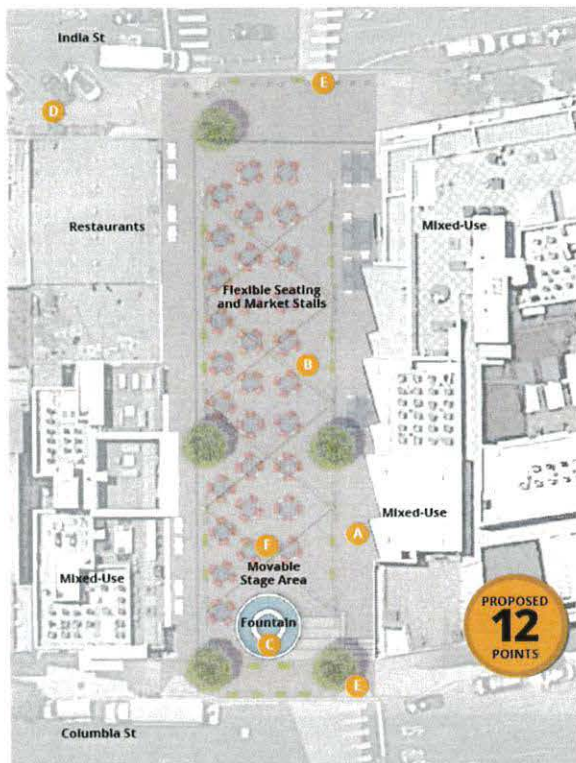
Current amenities offer 13 points of recreational value.

- Limited range of available amenities,
- Years of underuse
- Public safety challenges

Children's Parks Case Study



Piazza della Famiglia Case Study – Constructed



Proposed Recreation Point Value		
Key	Amenities	Points
	Pocket Park/Plaza	1
A	Food/Concession Area	1
B	Performance/Event Space	3
C	Public Art/Placemaking Elements	1
D	Connection to Transit	3
E	Connection to Public Realm	1
F	Space for Programmed Activities	2
Total		12
Population Served		1,000

SEE PROPOSED PLAN VIEW

Piazza della Famiglia is a .38-acre pocket park in featuring;

- Central gathering space.
- Pedestrian-only zone
- Blend of public and private space

Planned amenities will increase the site's point total to 12

- Recreational experiences on par with that of a 2.8 acre park.

Sample Neighborhood Park Case Study



Existing Recreation Point Value		
Key	Amenities	Points
	Neighborhood Park	2
A	Play Area	9
B	Multi-Purpose Turf Area	2
C	Specialty Recreation	0.5
D	Integration with Transit	2
Total		15.5
Population Served		1,300

SEE EXISTING PLAN VIEW

Representative two-acre neighborhood park with few recreational amenities relative to their overall size.

- Current amenities offer 15.5 points of recreational value.

Sample Neighborhood Park Case Study



Parks Master Plan Policies

Activation - Safe and inviting public spaces that support positive experiences for everyone and that further equity and access goals.

Co-Benefits - Multi-purpose park spaces that improve overall quality of life.

Community Building - Parks that are the focal points of our communities.

Mobility as Recreation - A Citywide network of safe, active recreational links that connects people with parks and public spaces.

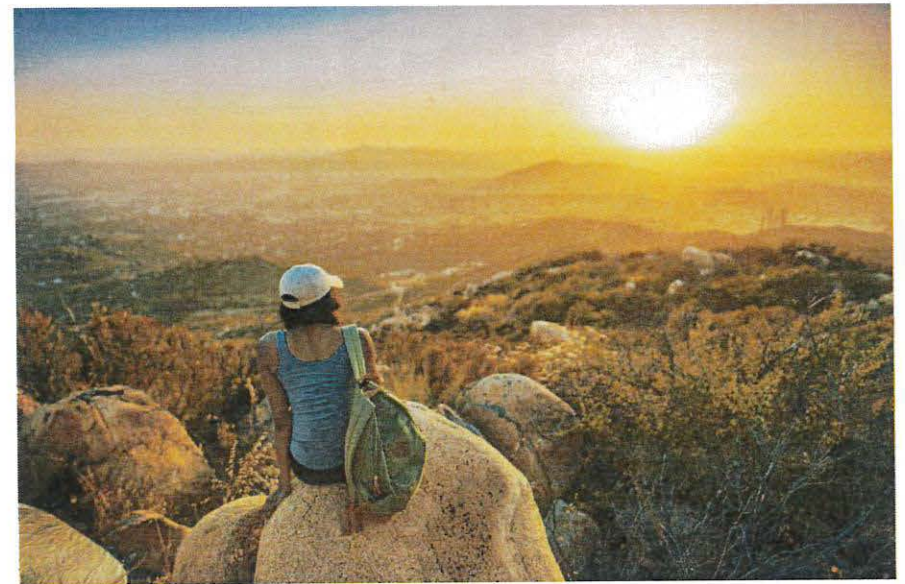
Arts and Culture - Parks that express the unique identities of our communities and connect people to arts and cultural experiences.



Parks Master Plan Policies

Regional Parks - Well-maintained and accessible regional parks that showcase unique scenic, natural, historical or cultural resources, while offering everyday recreation.

Funding - Sustainable, equitable, and dedicated funding sources to invest in the City's parks system.



Citywide Park Development Impact Fee

Citywide Park Development Impact Fee sets a standard impact fee across the entire city **allowing** the City to:

- Deliver parks **faster** with access to a larger pool of funds
- Target the **greatest needs** across the City
- **Efficient use of land** to provide more recreational assets at lower cost





Please visit www.sandiego.gov/parks-master-plan

Questions?