

The City of



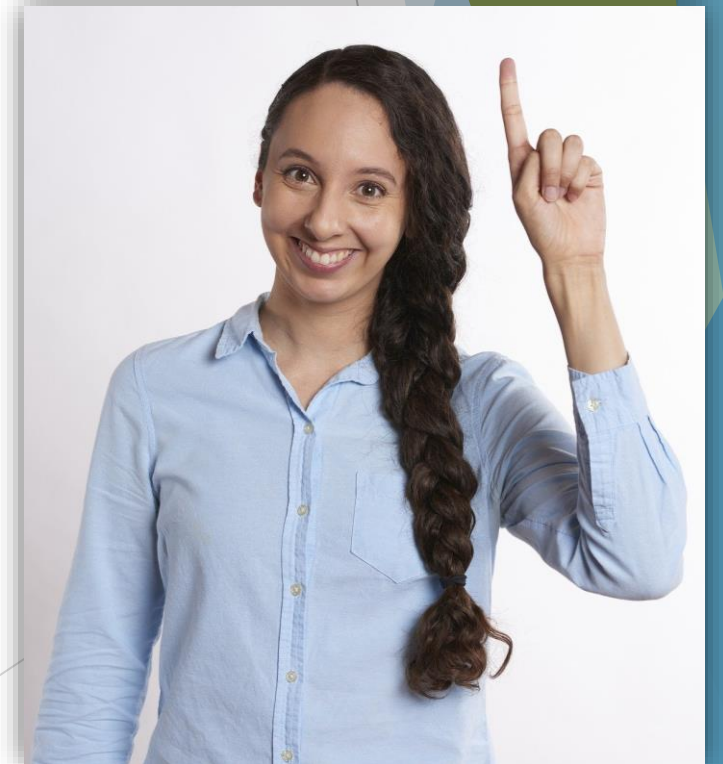
Redistricting Commission Basics

www.sandiego.gov/redistricting-commission



Friendly Reminder

This presentation is to better acquaint you with the local redistricting process and to provide ways to get involved. We would welcome your feedback by completing a public comment form or by speaking at the next Redistricting Commission hearing. More information on how to get involved will be provided in a later slide.



What does Redistricting entail for the City of San Diego?

Drawing new boundaries that determine which San Diegans are represented in each of the 9 Council Districts.

Representation

Census



Redistricting

Why Do We Redraw Council District Boundaries?

- ➡ Federal and state laws require district boundaries to be redrawn to reflect new population data. This takes place every 10 years based on the federal census data.
- ➡ Communities throughout the city change. Some residents move away, while others transfer to San Diego.
- ➡ To adjust for population densities so each Council district is approximately one-ninth of the total population of the City of San Diego.
- ➡ To ensure fair and equitable representation.



Meet the Commissioners

The Commissioners were appointed by the Appointing Authority, comprised of three retired judges of the San Diego Superior Court. The judges chose from over 100 applicants, with one representative from each of the nine Council districts.



Val Hoy
District 1



Ken Malbrough
Vice Chair
District 4



Justine Nielsen
District 7

Fred Kosmo
District 2



Alan Nevin
District 5



Monica Hernandez
District 8



Roy MacPhail
District 3



Mitz Lee
District 6



Tom Hebrank
Chair
District 9



Commission Responsibilities

- ➡ Promote community outreach and encourage public participation.
- ➡ Conduct Commission hearings that allow for public comment.
- ➡ Draft and finalize boundary maps for all 9 Council Districts.
- ➡ Promote a transparent and inclusive redistricting process.



City Charter Redistricting Parameters

The plan shall provide fair and effective representation for all citizens of San Diego.

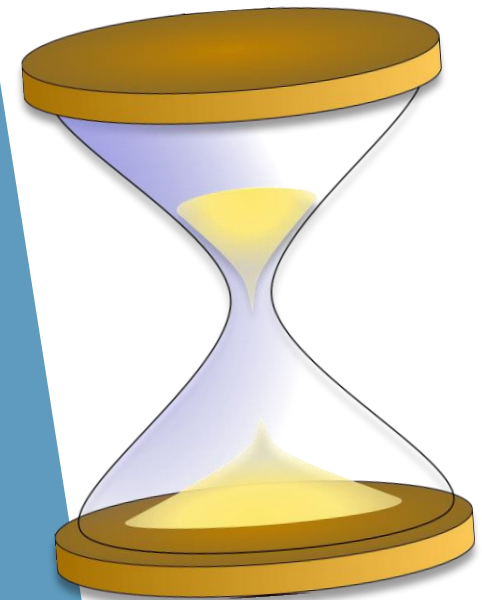
To the extent as practical, districts shall:

- ❖ Contain as nearly as practicable one-ninth of the total City of San Diego population.
- ❖ Preserve identifiable communities of interest.
- ❖ Be geographically compact.
- ❖ Be composed of contiguous territory with reasonable access between population centers in the district.
- ❖ Not be drawn up for the purpose of advantaging or protecting incumbents.



When will the Commission Receive the Census Data?

The California Supreme Court ruled that the California Redistricting Commission should have until December 15, 2021 to submit its maps to the California Secretary of State due to the Census data delays. That date is based on the Commission receiving the Census data by July 31, 2021. However, it is expected that the Census data won't actually be available until September 30, 2021. If that is the case, the California Redistricting Commission deadline will be adjusted accordingly. Local redistricting jurisdictions will potentially receive similar extensions.



Potential Timeline

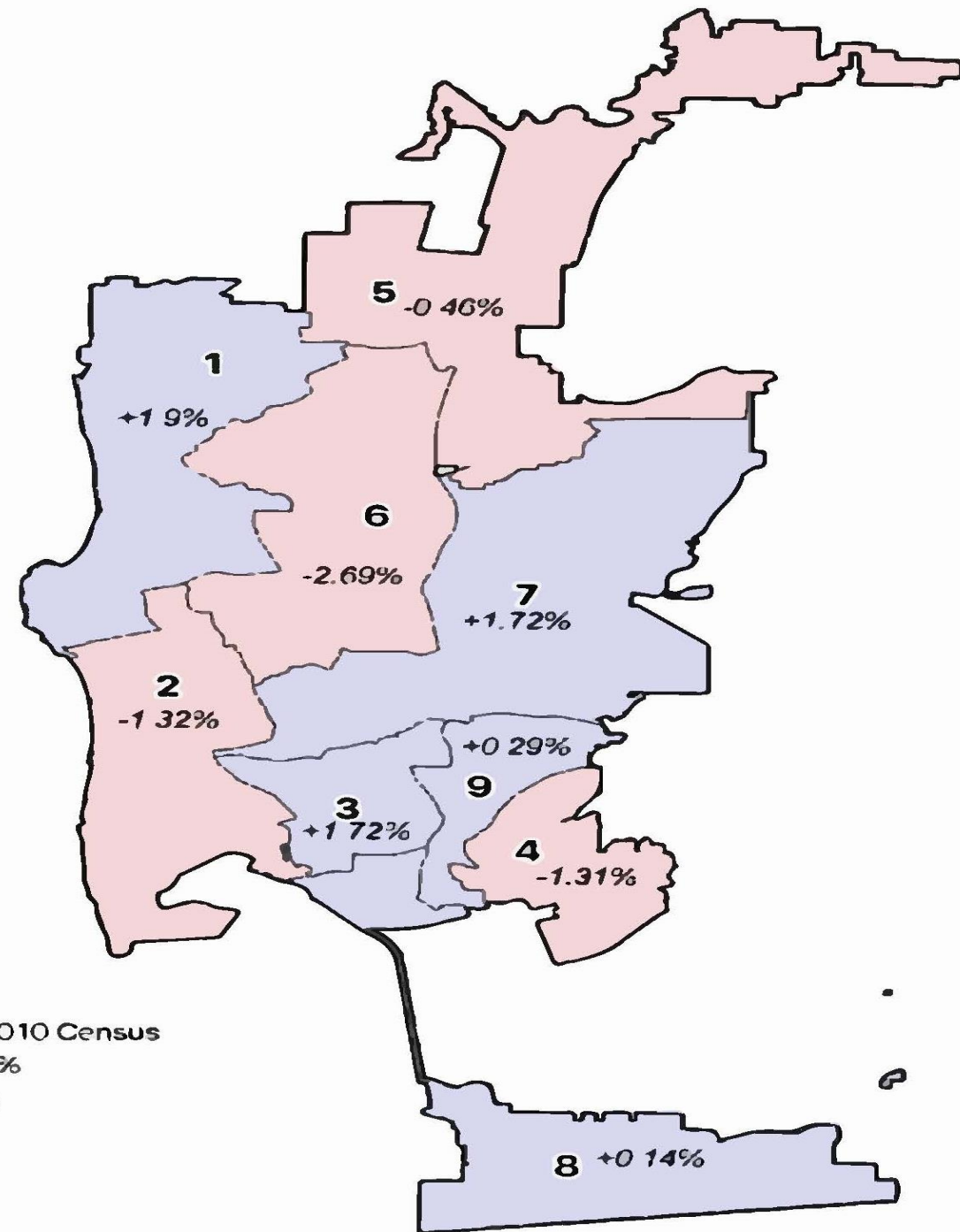
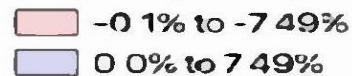
	Jan. 2021	Feb.	March	April	May	June	July	Aug.	Sept.	Oct.	Nov.	Dec. 2021	Jan. 2022	Feb.	March	April
Conduct interviews and hire chief of staff																
Form outreach, mapping and legal counsel subcommittees																
U.S. Census data released																
Receive publically submitted preliminary redistricting plans and input																
Conduct pre-map community presentations and outreach to encourage public participation																
Develop preliminary redistricting plan																
File preliminary redistricting plan and statement of findings																
Conduct post-map public hearings for additional opportunities for public input																
Make revisions to preliminary redistricting plan																
Adopt final redistricting plan																
Final redistricting plan subject to right of referendum (30-day period)																
Complete Commission final report (last slide)																

Please note that this timeline is subject to change based on when the Census data is received and if the state deadline extensions are applied at the local level.

2010 Council District Deviations

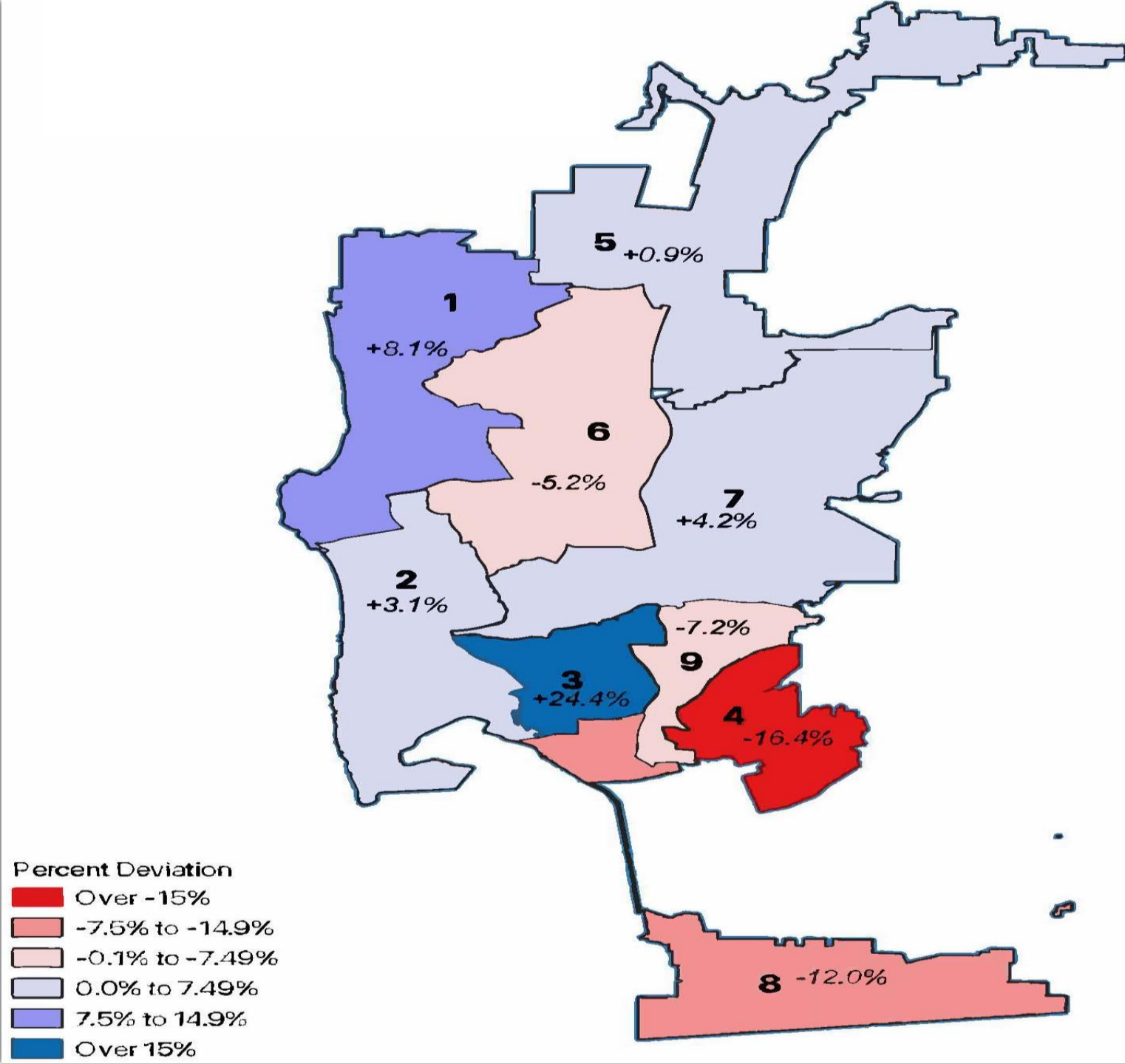
Zero deviation is always the goal. Total population deviation of up to 10% has historically been considered acceptable by the courts. However, a plan can be challenged and fail even if the deviation is less than 10%. The total deviation for the 2010 redrawn Council district lines was approximately 4.59%.

Percent Deviation 2010 Census



Potential Council District Population Changes

The following map uses SANDAG's 2019 population estimates not the 2020 Census data used for redistricting. The map simply provides a rough estimate of which districts *might* need to grow in size, and which *might* need to shrink in order to get closer to the ideal one-ninth size.



We Want to Hear from You!

The City of San Diego Redistricting Commission meets on the 3rd Thursday of the month at 3 p.m. To offer public comment testimony during a meeting, use the following Zoom Webinar link:

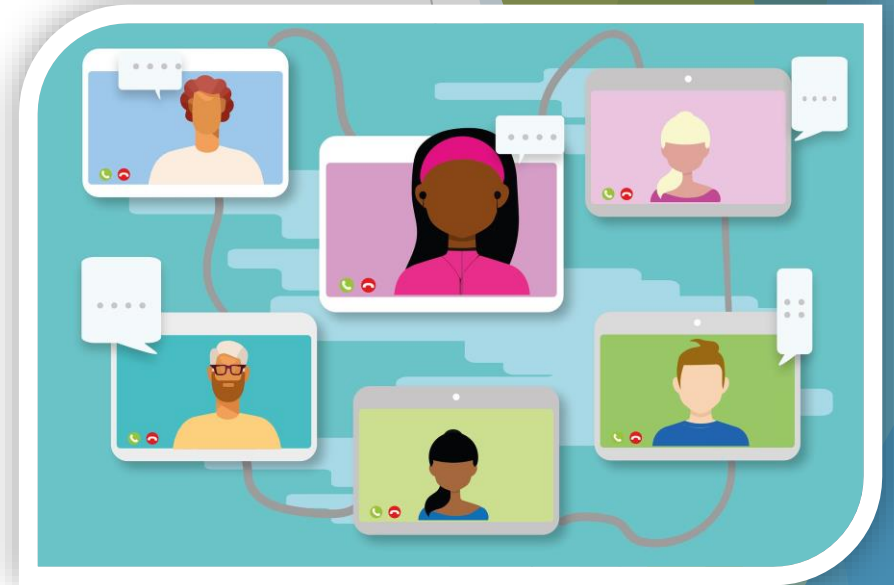
<https://sandiego.zoomgov.com/j/1613308818>

When the item is introduced that you would like to comment on (or it is time for Non-Agenda Public Comment), raise your hand by tapping the "Raise your Hand" button. When it is your turn to speak, click the unmute prompt.

You can also provide written comments using the webform which is on the website at

www.sandiego.gov/redistricting-commission

If you wish to submit written materials for submission into the record or include an attachment to your comment, you can mail it to 202 C Street, MS2A San Diego, CA 92101.



Stay Connected to the Commission

Email: Redistricting2020@san-diego.gov

Website: www.sandiego.gov/redistricting-commission

Facebook: [@CityofSDRedistrictingCommission](https://www.facebook.com/CityofSDRedistrictingCommission)

Twitter: [Redistrictsd](https://twitter.com/Redistrictsd)

Nextdoor: nextdoor.com/agency-detail/ca/san-diego/city-of-san-diego/

**There are also independent Redistricting Commissions for the county and state that you can get involved with.*