

SANTA CLARA IMPROVEMENTS PLAYGROUND & COMFORT STATION

MISSION BAY PARK COMMITTEE

October 1st, 2019

1008 SANTA CLARA PLACE
SAN DIEGO CA 92109



PLATT/WHITE LAW
ARCHITECTS, INC.

SITE LOCATION & SCOPE OF WORK



THE CITY INTENDS TO PROVIDE UPGRADES TO THE EXISTING PLAYGROUND AND COMFORT STATION.

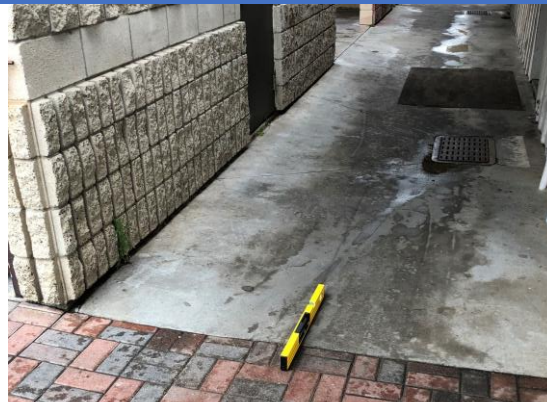
THE SCOPE OF WORK INCLUDES REPLACEMENT OF THE EXISTING AGED PLAY EQUIPMENT WITH NEW STATE OF THE ART PLAY EQUIPMENT TO INCORPORATE INCLUSIVE USE FOR 2-5 & 5-12 YEARS, AND UPGRADE TO THE COMFORT STATION, PATH OF TRAVEL TO COMPLY WITH ADA GUIDELINE AND CITY STANDARDS.



PLAYGROUND



COMFORT STATION



ACCESSIBLE PATH OF TRAVEL

SITE – EXISTING CONDITIONS

PLAYGROUND LAYOUT



LEGEND			
KEY	SYMBOL	DESCRIPTION	DETAIL
P-01		CONCRETE THICKENED EDGE	B - LC-004
P-02		PERMEABLE POURED IN PLACE (P.I.P.) RUBBER SURFACING OVER CONCRETE	A / LC-004
P-03		PERMEABLE ENGINEERED WOOD FIBER (E.W.F.) SURFACING	B - LC-004
P-04		P.I.P. RUBBER TO ENGINEERED WOOD FIBER TRANSITION	C / LC-004

LEGEND			
KEY	SYMBOL	DESCRIPTION	
S-01		BENCH WITH BACK 4 TOTAL	C / LC-006
S-02		BIKE RACK 2 TOTAL	D / LC-006
S-03		ACCESSIBLE PICNIC TABLE 3 TOTAL	A / LC-005
S-04		CHILD SIZED PICNIC TABLE 1 TOTAL	B / LC-005
S-05		VINYL COATED CHAIN LINK FENCE	A / LC-006
S-06		SHADE STRUCTURE (BID ALTERNATE, SEE SHEET LC-02) 4 TOTAL (SYMBOL AT LEFT NOT TO SCALE)	-
S-07		SHADE STRUCTURE FOOTING (BENEATH), TYP.	D / LC-004
S-08		TRASH (T) AND RECYCLING (R) RECEPTACLES	B / LC-006
S-09		PLAYGROUND UNDERDRAIN AND CLEAN OUT	C / LC-005
PA		PLANTING AREA	-

KEY NOTES	
1	EXISTING PAVING TO REMAIN AND BE PROTECTED
2	EXISTING FENCE AND HEADERWALL TO REMAIN AND BE PROTECTED
3	EXISTING PALM TO REMAIN AND BE PROTECTED
4	SIDEWALK, RE: CIVIL DRAWINGS
5	ACCESS ROUTE, SYMBOL OF ACCESS (FOR REFERENCE ONLY)
6	DASHED LINE (EQUIPMENT USE ZONE) FOR REFERENCE ONLY

PLAYGROUND EQUIPMENT CURRENTLY INCLUDED IN THE PLAYGROUND DESIGN:

PLAY EQUIPMENT PAINT COLORS ARE PROPOSED TO BE OCEAN-THEMED (LIGHT BLUES, GREENS, AND YELLOWS, AS WELL AS BEIGES AND GREYS). IMAGES BELOW DEPICT PLAY EQUIPMENT TYPES, BUT DO NOT ACCURATELY REFLECT THE PROPOSED COLOR PALETTE.



VIBE 5-12 YEAR OLD PLAY STRUCTURE (NOTE THE CANYON CLIMBER WHICH CONNECTS THE TWO DIFFERENT DECKS IS PROPOSED TO BE REPLACED WITH AN ARCH BRIDGE WITH GUARDRAILS WHICH IS ACCESSIBLE. A ROCK CLIMBING COMPONENT IS PROPOSED INSTEAD OF SLIDE (OPPOSITE SIDE OF RENDERING ABOVE). THE PLEXIGLASS/BUBBLE PANEL SHOWN IS PROPOSED TO BE REPLACED WITH A MORE DURABLE COMPONENT (WAITING FOR UPDATED CAD TEMPLATE FROM MANUFACTURER).



VIBE 2-5 YEAR OLD PLAY STRUCTURE (NOTE THE WEE PLANET CLIMBER IS PROPOSED INSTEAD OF THE (4) PODS IN THE CENTER OF THE STRUCTURE)



5" ARCH SWING - 5-12 YEAR OLD PLAYGROUND



5" ARCH SWING - 2-5 YEAR OLD PLAYGROUND



OODLE SWING



WE-SAW



OMNISPIN SPINNER



SADDLE SPINNER



CURVA SPINNER



WHIMSY RIDER SEA HORSE

PLAYGROUND EQUIPMENT NOT CURRENTLY INCLUDED IN THE PLAYGROUND DESIGN:

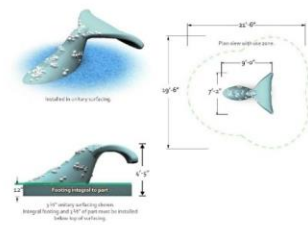
- DESIGN TEAM RESEARCHED "SWAP-OUT" STYLE WHEELCHAIR SWINGS, BUT WAS UNABLE TO LOCATE ANY WHEELCHAIR SWINGS THAT ARE MANUFACTURED USING A LARGE DIAMETER POST NEEDED FOR PUBLIC PARKS. THAT SAID, (2) ADDITIONAL TYPES OF PLAY EQUIPMENT HAVE BEEN SHOWN BELOW AS ALTERNATIVES TO THE OMNISPIN SPINNER. THESE ALTERNATES HAVE A LARGE USE ZONE, AND THE SWAY FUN WHEELCHAIR GLIDER REQUIRES AN ACCESS RAMP, SO THEY WOULD NEED TO BE SELECTED IN LIEU OF (NOT IN ADDITION TO) EQUIPMENT CURRENTLY INCLUDED IN THE PLAYGROUND DESIGN.
- OCEAN-THEMED CONCRETE CLIMBING EQUIPMENT WAS REQUESTED FOR CONSIDERATION, SO WHALE TALE AND ROCK CRAB ALTERNATIVES HAVE BEEN SHOWN BELOW. THESE ALTERNATIVES HAVE A LARGE USE ZONE, SO THEY WOULD NEED TO BE SELECTED IN LIEU OF (NOT IN ADDITION TO) EQUIPMENT CURRENTLY INCLUDED IN THE PLAYGROUND DESIGN.



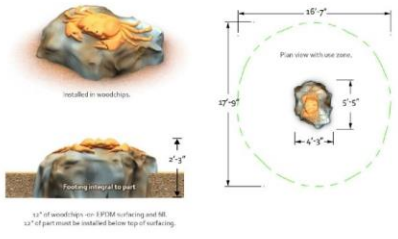
WE GO ROUND



SWAY FUN WHEELCHAIR GLIDER



WHALE TALE



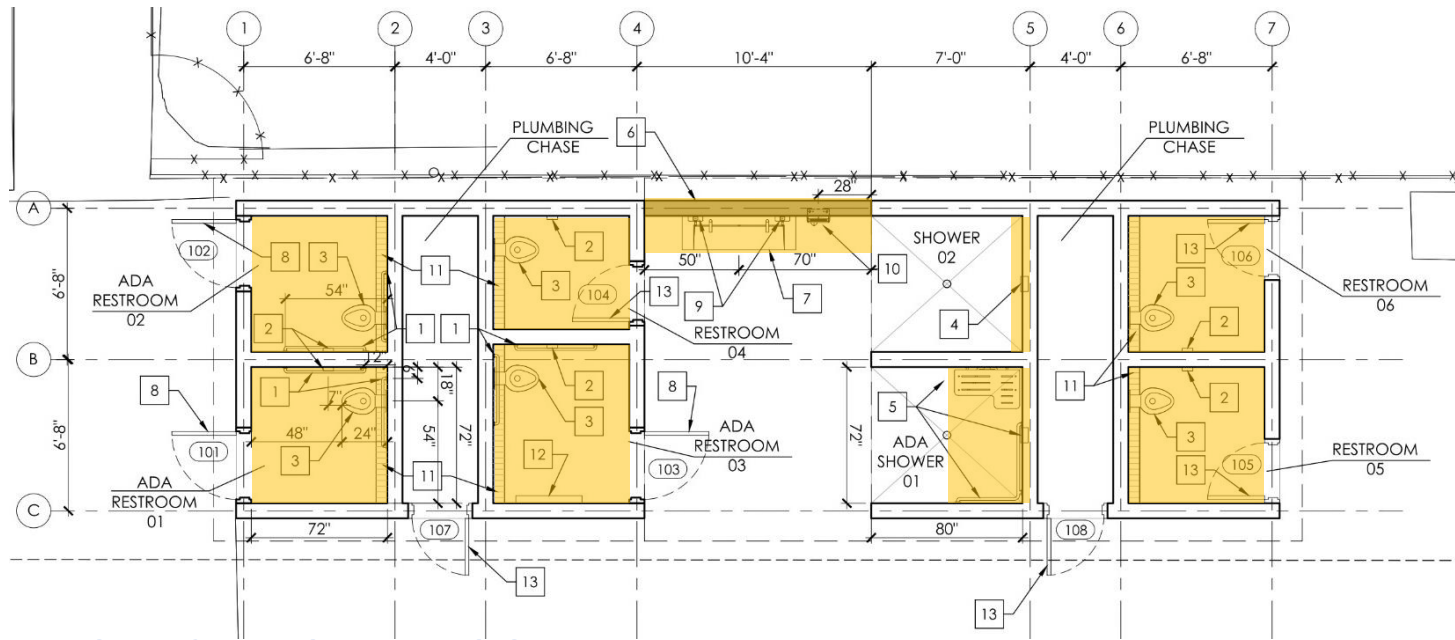
ROCK CRAB

PLAYGROUND EQUIPMENT



KEY NOTES

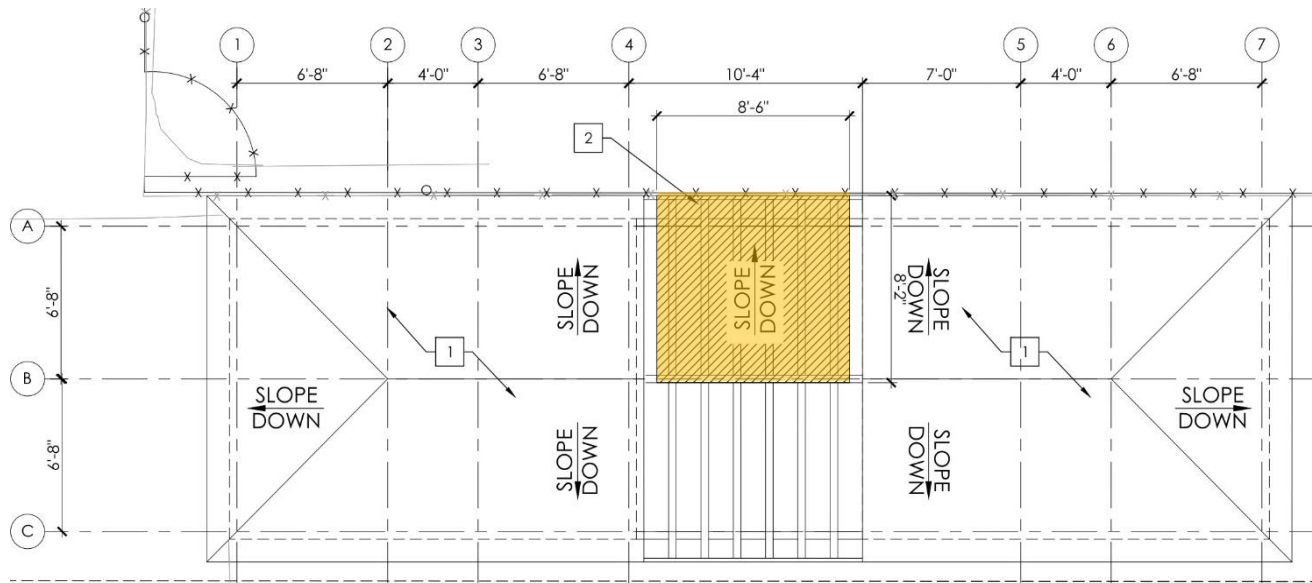
- 1 ADA GRAB BAR
- 2 TOILET PAPER DISPENSER
- 3 WALL MOUNTED TOILET
- 4 SHOWER
- 5 ADA SHOWER, GRAB BAR AND SEAT
- 6 4'-8" HIGH CMU WALL
- 7 60" FLOATING CONCRETE SINK
- 8 PROVIDE DOOR, FRAME & HARDWARE
- 9 SOAP DISPENSER
- 10 HAND DRYER
- 11 GRATE AND STEEL FRAME
- 12 BABY CHANGING STATION
- 13 PROVIDE DOOR & HARDWARE



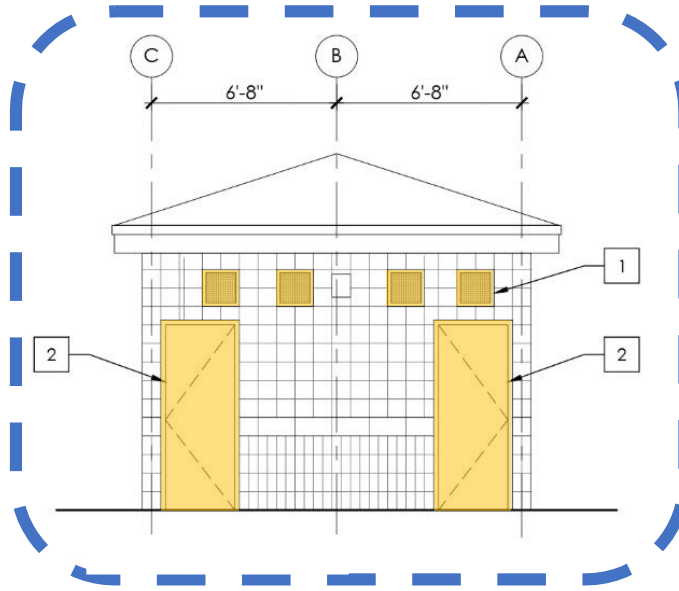
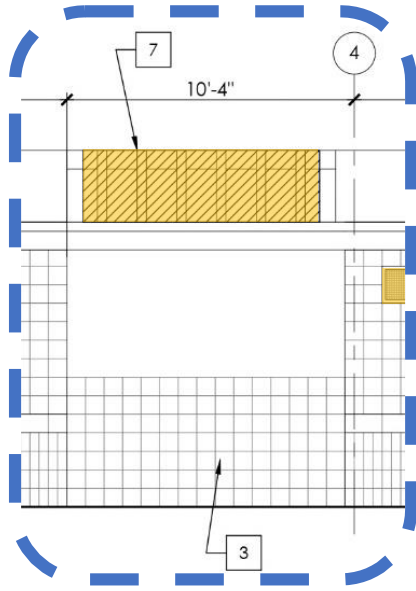
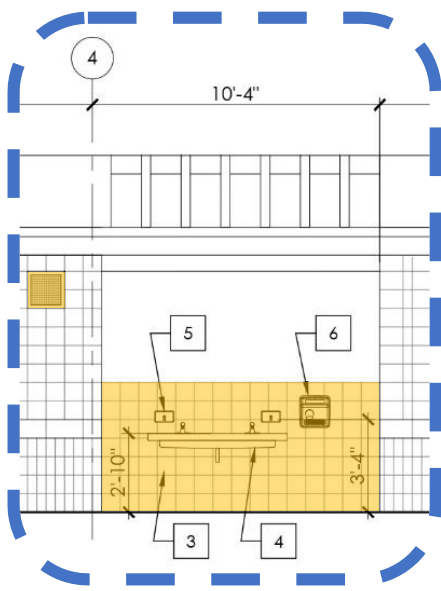
COMFORT STATION – FLOOR PLAN

KEY NOTES

- 1 EXISTING CONCRETE SHINGLE ROOFING
- 2 NEW TRANSLUCENT ROOFING

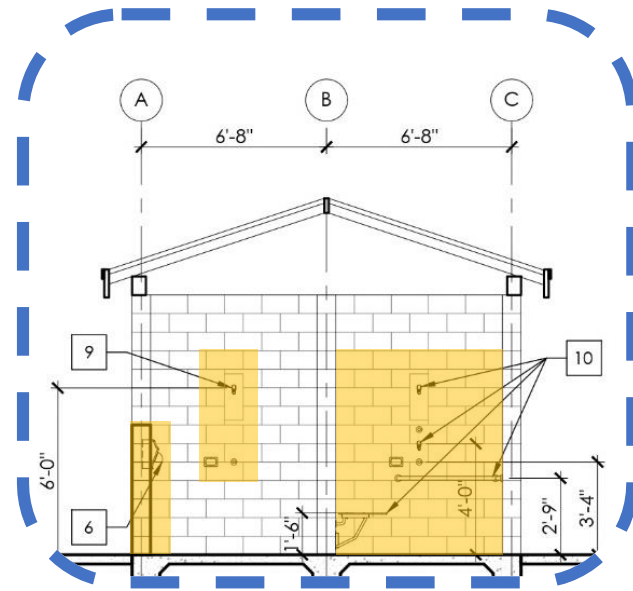
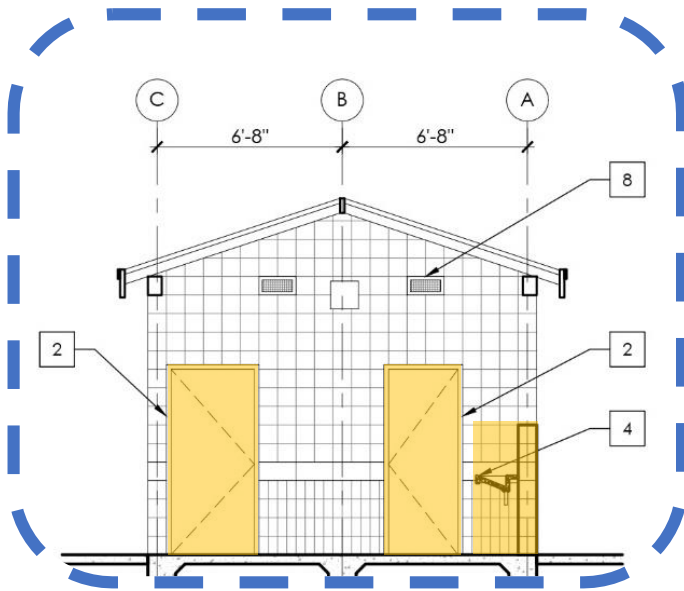


COMFORT STATION – ROOF PLAN



KEY NOTES

- 1 REMOVE RESTROOM STEEL FRAME AND PROVIDE STAINLESS STEEL WIRE MESH SCREEN, TYP.
- 2 DOOR, SEE SHEET A-601 FOR DOOR SCHEDULE
- 3 4'-8" HIGH CMU WALL
- 4 60" FLOATING CONCRETE SINK
- 5 SOAP DISPENSER
- 6 HAND DRYER
- 7 NEW TRANSLUCENT ROOFING
- 8 REMOVE AND PROVIDE STAINLESS STEEL WIRE MESH SCREEN, TYP.
- 9 SHOWER
- 10 ADA SHOWER, GRAB BAR AND SEAT



COMFORT STATION – ELEVATIONS

FINAL INPUT & DISCUSSION



**PLATT/WHITELAW
ARCHITECTS, INC.**