



South Mission Storm Drain and Green Infrastructure

Background

South Mission Beach is located within the larger community of Mission Beach, which is situated along the Pacific Ocean between Grand Avenue and the Mission Bay Jetty. This community is considered to be the most densely populated community in the City of San Diego, which makes the installation of adequately sized infrastructure challenging within the narrow streets and alleyways. The existing storm drain infrastructure within South Mission Beach dates back to the 1940s in some areas and is inadequately sized or lacking in many locations. This has resulted in regular flooding throughout the developed areas and exposure of the storm drain outfalls within the beach areas of Mariners Basin.

Project Overview

The South Mission Beach Storm Drain and Green Infrastructure project evaluated the upsizing, realignment, and replacement of the existing storm drain systems that feed into Mariners Basin, and the Mission Bay Jetty, as well as new storm drain systems to connect existing low points throughout South Mission Beach. The drainage discharge points within Mariners Basin will be relocated to outfall deeper into the bay to make the beach and navigational areas safer and more appealing to the public. The project will reduce the flooding that occurs within South Mission Beach and will include the following key features:

- Replace or upgrade existing drainage systems to meet current City of San Diego Drainage Design requirements and reduce flooding;
- Install a new storm drain backbone and inlets along Mission Boulevard;
- Install Sluice Gates along seven of the storm drain systems to prevent tidal waters from entering the storm drains within the developed areas;
- Install water quality basins at the northern and southern ends of the project to treat existing parking lot areas;
- Install low flow diversion systems to divert portions of the runoff to the existing sewer within the developed areas;
- Grind and Overlay Mission Boulevard to provide additional runoff capacity within the street and reduce flooding of developed properties;
- Complete shoreline restoration and eelgrass planting;
- Replace curb ramps, pavement, street surfacing, etc. wherever storm drain replacement occurs.

Project Schedule

Anticipated Construction: Fall 2020 – Spring 2023*

**All dates are approximate and subject to change.*

Contact information:

Ronald Famorcan, 619-533-6902 and at rfamorcan@sandiego.gov



South Mission Beach Storm Drain and Green Infrastructure

THIS MAP/DATA IS PROVIDED WITHOUT WARRANTY OF ANY KIND, EITHER EXPRESS OR IMPLIED, INCLUDING, BUT NOT LIMITED TO, THE IMPLIED WARRANTIES OR MERCHANTABILITY AND FITNESS FOR A PARTICULAR PURPOSE. Note: This product may contain information reproduced with permission granted by RAND McNALLY & COMPANY to SANDAG. This product may contain information reproduced with permission granted by RAND McNALLY & COMPANY to SANDAG. This map is copyrighted by RAND McNALLY & COMPANY. It is unlawful to copy or reproduce all or any part thereof, whether for personal use or resale, without the prior, written permission of RAND McNALLY & COMPANY.



The City of **SAN DIEGO** Public Works

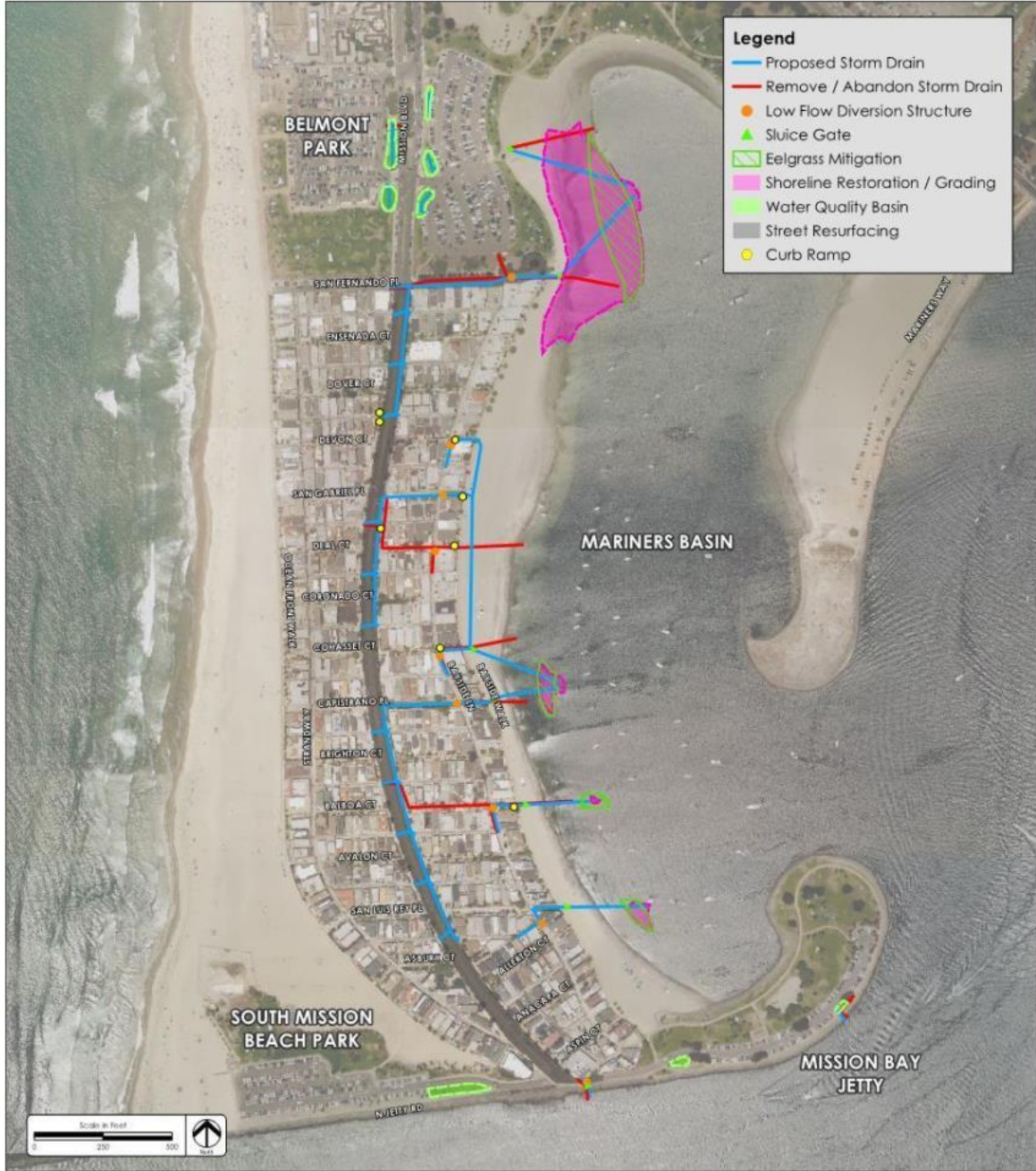
SOUTH MISSION BEACH STORM DRAIN AND GI

SENIOR ENGINEER
MAHMOUD ORIQAT
(619) 533-5232

PROJECT MANAGER
RONALD FAMORCAN
(619) 533-6902

PROJECT ENGINEER
LYNN HASSOUN
(619) 533-7413

FOR QUESTIONS ABOUT THIS PROJECT
Call: 619-533-4207
Email: engineering@sandiego.gov



COMMUNITY NAME: MISSION BEACH
Date: January 17, 2020

COUNCIL DISTRICT: 2

SAP ID: B18117\
B18118

