



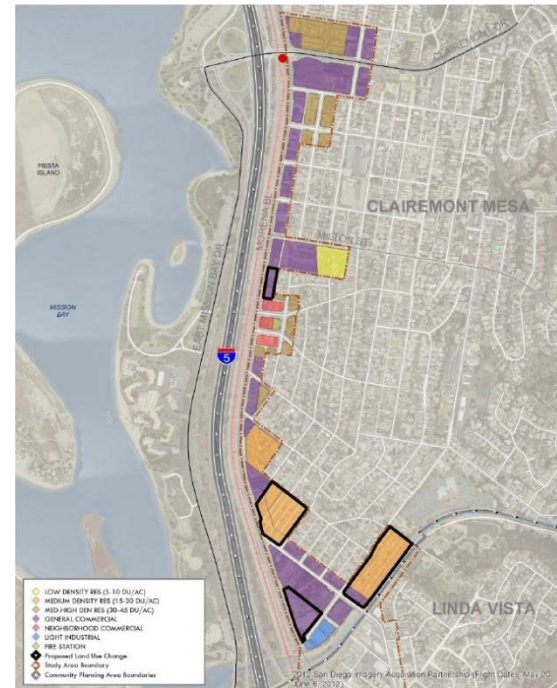
# Morena Corridor Specific Plan

Clairemont Community Planning Group  
Ad Hoc Subcommittee Meeting  
July 18, 2016

# Tonight's Agenda – Mobility

- Morena Boulevard Overview / Existing Conditions
- Summary of Community Input
- Draft Mobility Concepts for Morena Boulevard
  - Potential Configurations
- Next Steps
- Subcommittee Comment
- Public Comment

# Study Area



- ❖ 1.5 mile segment of Morena Blvd
- ❖ 4-lane major
- ❖ Average daily trips ~ 11,000 to 15,000 as of 2014

## Community Input

- ❖ Bicycle facility should be moved to west side
- ❖ More parking or angled parking options
- ❖ Increase landscaping
- ❖ Traffic calming measures (yellow bumpers approaching crosswalks, lower speed limit, and a continuous median)
- ❖ Address access for emergency vehicles
- ❖ Expanded sidewalk/boardwalk



# Mobility DRAFT Concepts

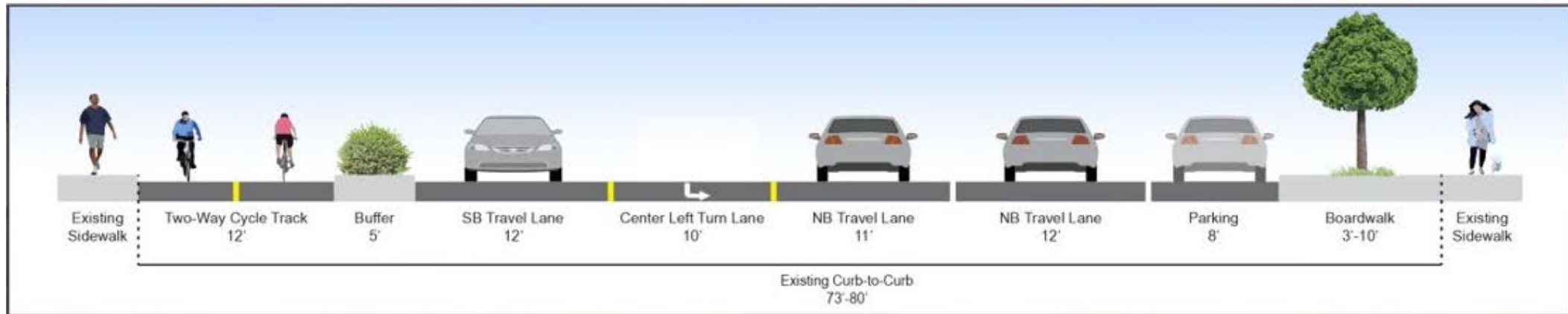
## Alternatives – No Project



- ❖ Maintain roadway as is
- ❖ 4-lane major
- ❖ 4' bicycle lane (west side)
- ❖ Parallel parking (mostly on east side)

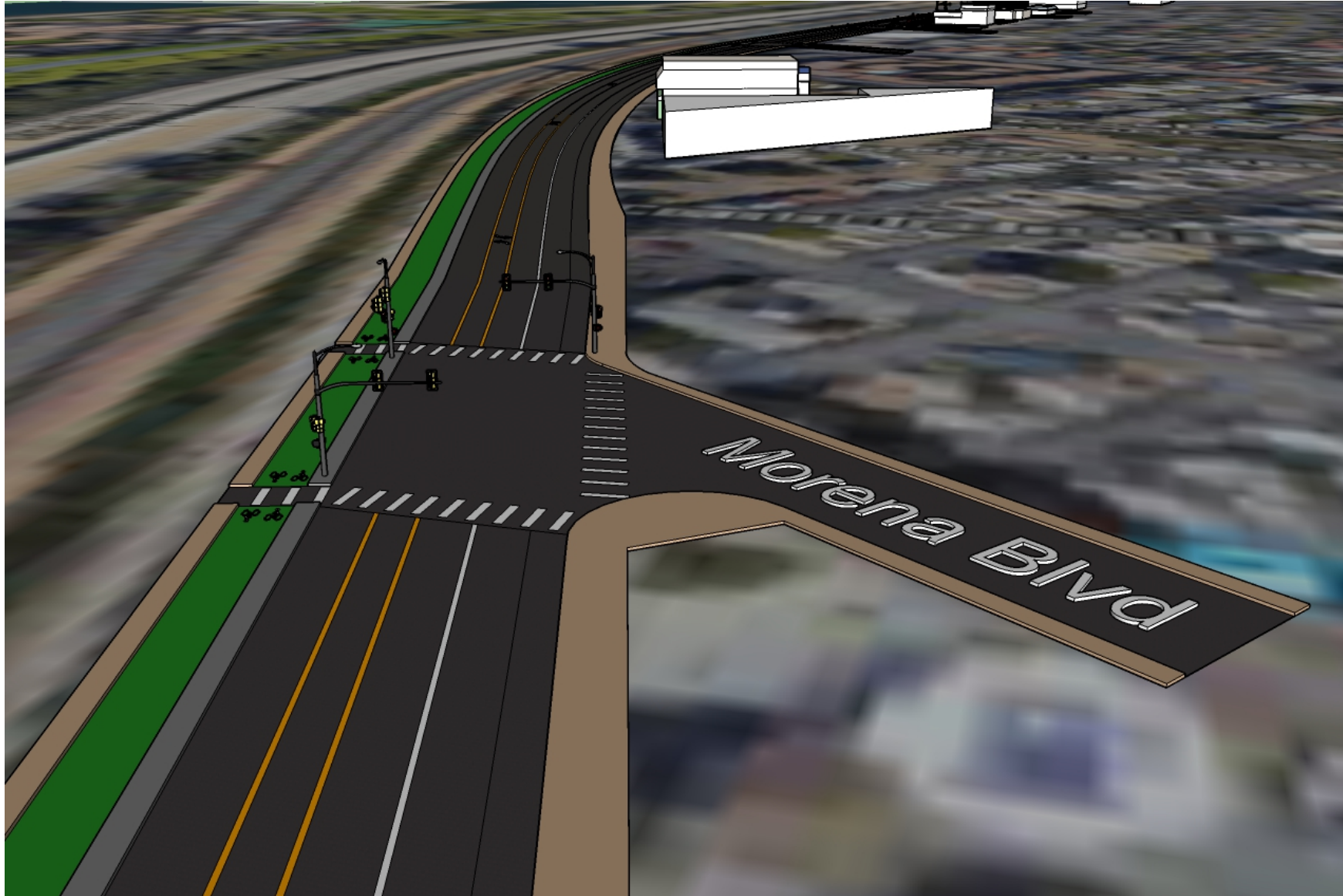


## Alternatives – 3 Lane Facility\*



- ❖ Low stress bicycle facility (2-way cycle track)
- ❖ 2 lanes northbound/1 lane southbound
- ❖ Continuous left turn lane / emergency access
- ❖ Parallel parking on east side

**\*No identified issues with vehicle capacity in previous study**





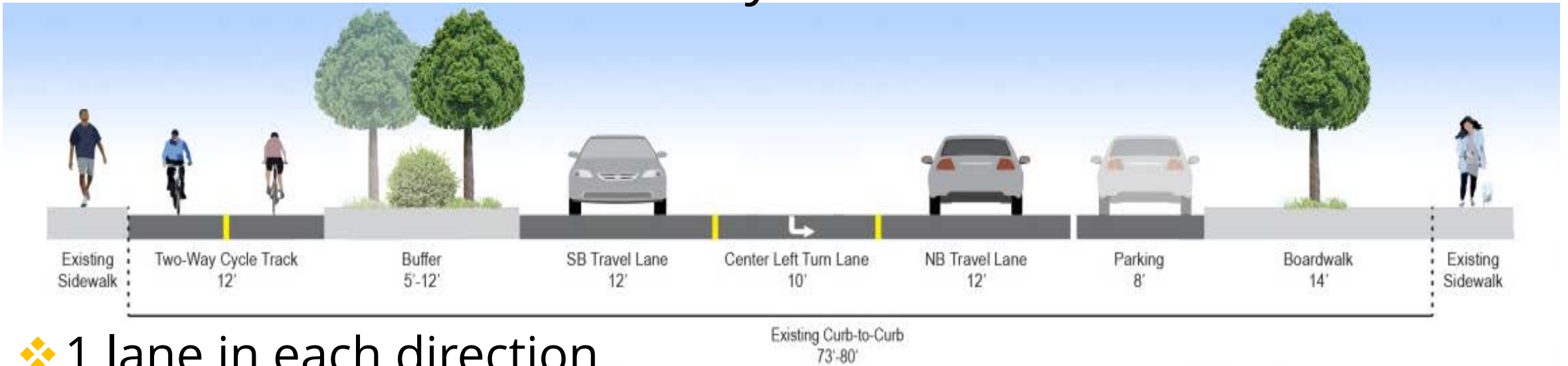








## Alternatives – 2 Lane Facility\*

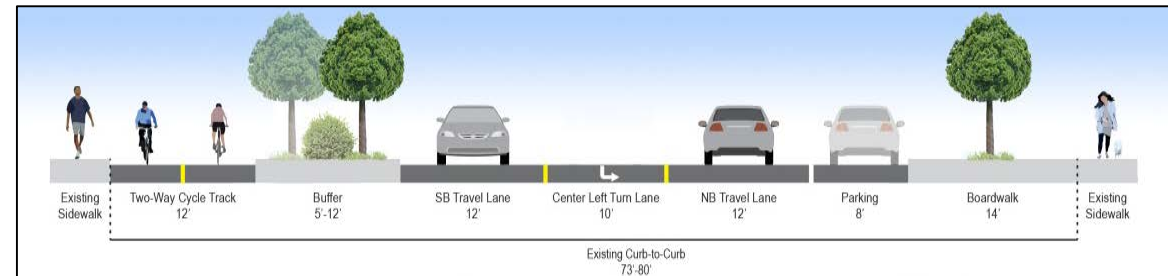
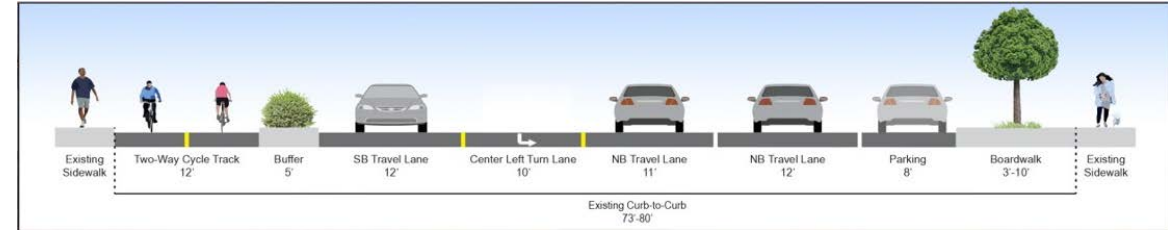


- ❖ 1 lane in each direction
- ❖ Improves safety and walkability
- ❖ More area for landscaping and street furniture
- ❖ Low stress bicycle facility
- ❖ Increases parking
- ❖ Reduces traffic speeds

**\*Potential issues with vehicle capacity**

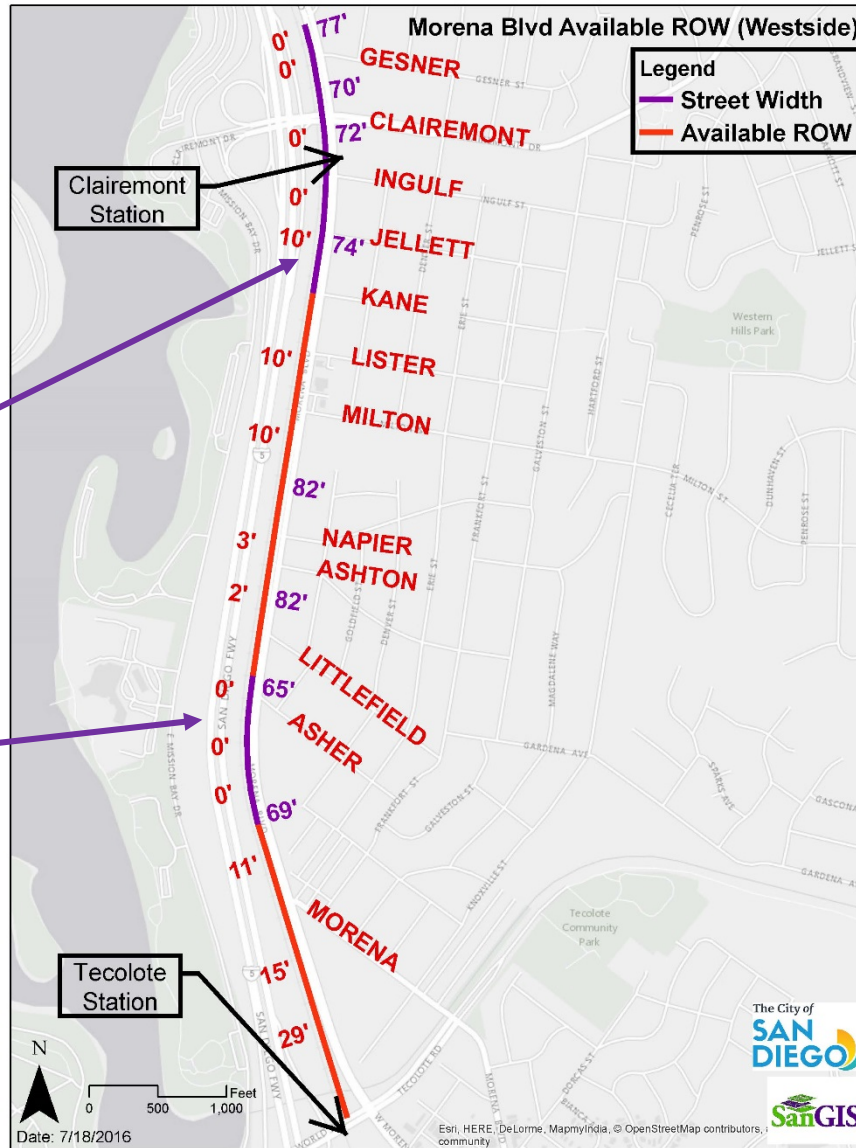
# Proposed (alternatives) would:

- ❖ Improve mobility for all modes
- ❖ Reduce vehicle speeds
- ❖ Introduce a low stress bike facility along a major corridor
- ❖ Enhance the walking environment by providing:
  - ❖ enhanced crossing opportunities
  - ❖ Street trees and landscaping
  - ❖ bicycle buffer from high-speed traffic



# Right-of-Way Analysis

Constrained right-of-way near Jellett and Asher



Additional right-of-way could be used for:

- Street Trees and Landscaping
- Amenities at bus stops



## Next Steps:

- ❖ Traffic analysis and technical studies August-November
- ❖ Drafting the Specific Plan September/October
- ❖ Public Review Draft Specific Plan/EIR Winter 2016
- ❖ Approval Process Spring/Summer 2017
  - ❖ Final Draft Specific Plan and EIR
  - ❖ Public Hearings





# Feedback & Questions

Next Ad-Hoc Subcommittee Meeting – September