

# City of San Diego Police Department



## Prisoner Processing

The San Diego Police Department supports the fundamental right of all people to peaceably assemble and their right of free speech. At no time should a group or individual interpret this support of a constitutional right as permission to threaten violence, commit assaults or engage in criminal acts. In those cases, this Department will act swiftly and with resolve to protect human life, property and maintain peace.

**Portions of this document are deemed by the San Diego Police Department to be records of security procedures and are exempt from disclosure under the California Public Records Act (CPRA), Government Code Section 6254 (f).**

# TABLE OF CONTENTS

This Prisoner Processing Operations Manual is intended to provide all personnel of the San Diego Police Department with information that is easy to retrieve and valuable in an event where mass arrests are anticipated. This guide is not a complete listing of all information or sources.

Mobile Field Force deployments are utilized, at the discretion of the Incident Commander, to assemble a set number of officers in an expedited, organized manner. During incidents of civil unrest or events where mass arrests are anticipated, the Prisoner Processing Unit can be activated to handle prisoner transport, booking process, and jail intake. When the Incident Commander deems the number of arrests to be a significant number, the San Diego Sheriff's Mobile Booking Team can be activated to assist in streamlining the jail intake process.

STAFFING 3

**(Deleted – records of security)**

ROLES AND RESPONSIBILITIES 4-5

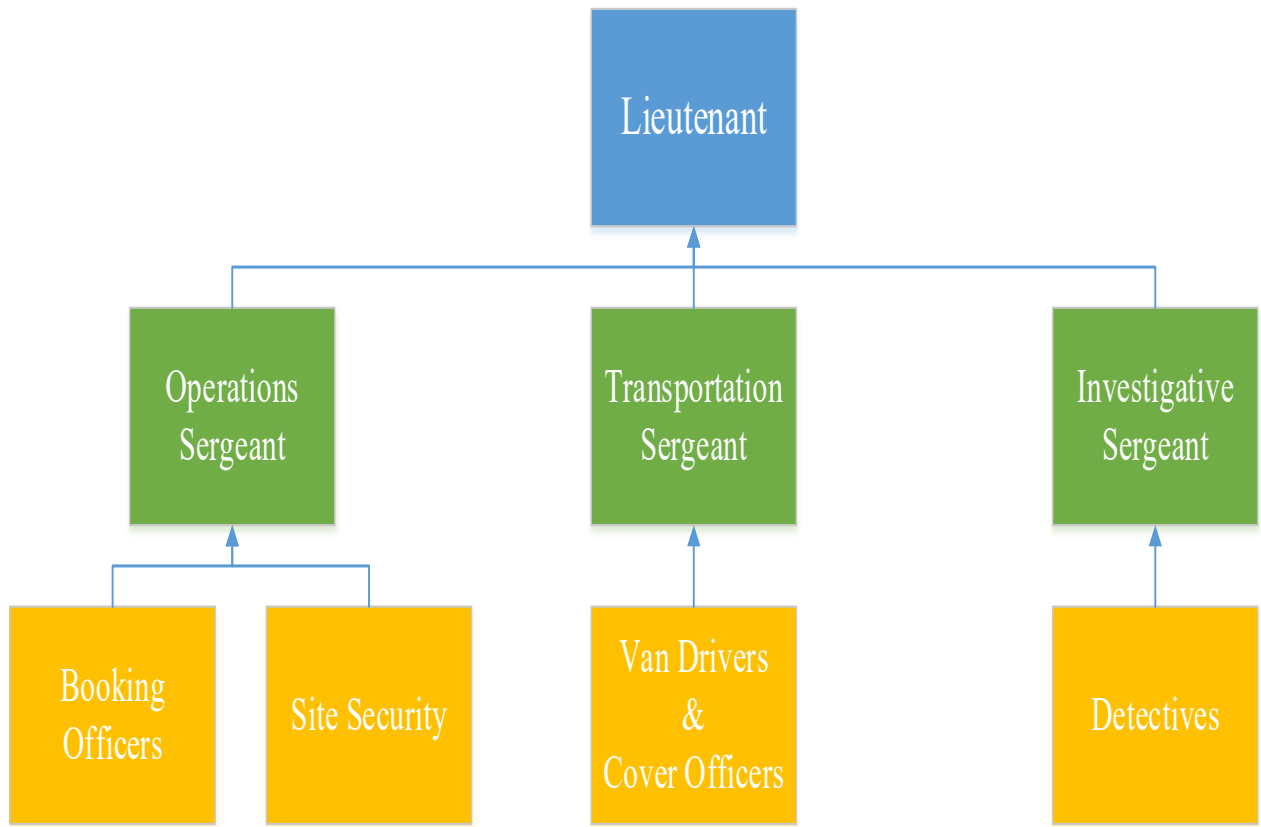
**(Deleted – records of security)**

SHERIFF'S MOBILE BOOKING TEAM 12

**(Deleted – records of security)**

DEMOBILIZATION 13

# STAFFING



**(Deleted – records of security)**

# ROLES AND RESPONSIBILITIES

## **Lieutenant**

- Overall Command of Prisoner Processing
- Liaison with Incident Commander and D.O.C.
- Liaison with SDSO Emergency Management for Sheriff's Mobile Booking Team
- Determine size and scope of Prisoner Processing in conjunction with Incident Commander of unlawful assembly

## **Operations Sergeant**

- Supervise Booking Officers
- Supervise Site Security Officers
- Liaison with CIMU
- Approve Probable Cause Declarations and Bookings
- Report Statistical Information

## **Transportation Sergeant**

- Supervise Prisoner Van Drivers and Cover Officers
- Track Prisoner Van locations
- Ensure necessary paperwork was completed by arresting officers
- Liaison with Field Supervisors
- Handle any citizen complaints from arrestees
- Arrange transportation for arresting officers if needed

## **Investigative Sergeant**

- Supervise Detectives
- Liaison with other law enforcement agencies
- Liaison with prosecuting agencies

## Site Security Officers

- Maintain situational awareness of surrounding area
- Protect perimeter of prisoner processing

## Booking Officers

- Complete booking paperwork
- Complete property receipts
- Identify arrestees
- Criminal History checks
- Complete Arrest Log entry
- Capture statistical data

## Prisoner Van Officers

- Respond to requests for prisoner transport
- **(Deleted – records of security)**
- Have arresting officer complete probable cause declaration or arrange for arresting officer to meet at Prisoner Processing to complete necessary paperwork
- Complete Prisoner Processing Data Sheet
- Receive prisoner property
- Transport prisoner to Prisoner Processing
- **(Deleted – records of security)**

## Detectives

- Act as Case Agent for crime cases and arrests
- Interview arrestees
- Liaison with prosecuting agency
- Interview officers injured during an attack
- Document injuries to officers and arrestees
- **(Deleted – records of security)**

**(Deleted – records of security)**

**(Deleted – records of security)**

**(Deleted – records of security)**



**(Deleted – records of security)**

**(Deleted – records of security)**

**(Deleted – records of security)**

**SHERIFF'S MOBILE BOOKING TEAM**

When anticipating mass arrests for a single incident, the SDSO Emergency Management Unit can be contacted to request the Sheriff's Mobile Booking Team.

**(Deleted – records of security)**

## **DEMOBILIZATION**

Once all prisoners have been transferred to SDSO custody,

Once all paperwork has been completed,

Once equipment has been returned to CIMU and Special Event Operations,

After consulting with the Incident Commander, the Prisoner Processing Lieutenant can shut down Prisoner Processing.

All data captured regarding arrests will be sent to the Department Operations Center and/or Command Post prior to closing down Prisoner Processing.

**(Deleted – records of security)**