

GalvinPreservationAssociates



City of San Diego Midway – Pacific Highway Community Plan Area Historic Resources Survey Report: Historic Context & Reconnaissance Survey

Prepared for

City of San Diego
Planning Department
1010 Second Avenue
San Diego, CA 92101

Prepared by

Galvin Preservation Associates Inc.
231 California Street
El Segundo, CA 90245



Updated February 2017
Updated November 2016
March 2012



Table of Contents

Executive Summary	1
Summary	1
Other Applicable Contexts and Surveys	1
Project Overview	2
Introduction	2
Public Participation	2
Survey Area	2
Methods	6
National Register of Historic Places	6
California Register of Historical Resources	7
San Diego Register of Historic Resources	8
California Historical Resource Status Codes	9
Historic Context Statement	11
Introduction	11
Spanish Period (1769-1822)	12
Mexican Period (1822-1846)	13
American Period (1846 - 1970)	14
<i>Theme: Transportation Improvements and Early Industrial Development (1882 – 1914)</i>	17
<i>Theme: Military, Aerospace, and Related Industrial Development (1901 - 1953)</i>	20
<i>Theme: Post War Commercial and Residential Development (1945-1970)</i>	25
Survey Results	31
Previously Identified Resources	31
Potential Individual Resources	33
Recommendations	41
Bibliography	42
Appendix A: Architectural Style Guide	46
Appendix B: Data Table of All Surveyed Properties	56

Executive Summary

Summary

This report presents the results of a historic resources survey of the Midway - Pacific Highway Community Plan Area. In September 2009, the City of San Diego retained Galvin Preservation Associates Inc. (GPA) to complete this survey as part of its community plan update process. GPA conducted a reconnaissance-level survey of the community plan area, focusing on properties constructed prior to 1970. Surveyors identified properties that appeared eligible for individual designation, as well as geographically definable areas that appeared eligible for designation as historic districts. All identified properties were evaluated using the City of San Diego's local designation criteria and documented in a Microsoft Access database provided by the City. All properties were assigned a corresponding California Historical Resource Status Code. In total, 228 properties were surveyed resulting in the identification of 43 potential individual resources.

In conjunction with the survey, GPA prepared a historic context statement for the Midway - Pacific Highway Community Plan Area. The historic context statement describes the broad patterns of development in the area, organized by period and then theme. It also identifies associated property types and registration requirements to aid in the City's ongoing efforts to identify historic resources in the community plan area.

The survey was conducted by GPA on behalf of and under the guidance of the City of San Diego Planning Department. The project was managed by Kelley Stanco, Senior Planner, and Cathy Winterrowd, Principal Planner, with the City of San Diego. The GPA project team consisted of professionals that meet the Secretary of Interior's Professional Qualifications for Historic Preservation, including Teresa Grimes, Principal Architectural Historian; and Nicole Collum, Jennifer Krintz, and Elysha Dory, Architectural Historian IIs.

Other Applicable Contexts and Surveys

This survey of the Midway - Pacific Highway Community Plan Area was intended to capture the overarching themes and property types important to the development of the community. However, other multi-community or Citywide contexts and surveys may also be applicable within the Midway-Pacific Highway community. These include the San Diego Modernism Historic Context Statement and the San Diego Citywide Lesbian, Gay, Bisexual, Transgender and Queer (LGBTQ) Historic Context Statement. Additionally, new contexts and surveys relevant to the community may be developed in the future. Please contact Historic Preservation Planning staff in the Planning Department for information on other documents that may be applicable to the Midway - Pacific Highway Community Plan Area.

Project Overview

Introduction

In March 2008, the San Diego City Council unanimously approved a comprehensive update to the City's General Plan. The plan sets out a long-range vision and policy framework for how the City should plan for projected growth and development, provide public services, and maintain the qualities that define San Diego over the next 20 to 30 years. It represents a shift in focus from how to develop vacant land to how to design infill development and reinvest in existing communities.

The General Plan also calls for the update of the City's various community plans. As a policy document, community plans provide goals and objectives for the development of communities and designate where specific land uses should go and are further implemented by citywide and localized zoning programs. One of the goals of the update process will be to revise the Midway - Pacific Highway Community Plan to reflect current conditions and the long-term vision for the community, as well as align a number of existing plan elements with community plan update guidelines and elements of the recently approved General Plan. As a first step to updating the Midway - Pacific Highway Community Plan, the City commissioned the preparation of a reconnaissance survey of the area to identify potential historic resources constructed prior to 1970.

Public Participation

Throughout the community plan update process, the City engaged the public by conducting workshops and meetings. A Community Plan Update Advisory Committee (CPUAC) was formed. The function of the CPUAC is to facilitate community involvement and represent the interests of the residents and other stakeholder groups. On February 16, 2011, the Draft Historic Context Statement for the Midway - Pacific Highway Community Plan Area was presented at a CPUAC meeting. GPA and the City staff also provided an introduction to the known historic resources in the area and described how the survey fit into the larger community plan update process. During the meeting, the public was invited to comment on the significant themes related to the development of the community and on the location of significant historic resources.

Survey Area

The Midway - Pacific Highway Community Plan area encompasses approximately 800 acres of relatively flat land, which is situated north of Downtown between Old Town and the north end of the Peninsula Community Plan area. The community is comprised of two basic elements: the Midway area and the narrow, linear-shaped Pacific Highway corridor. The Midway area consists of an urbanized commercial core containing numerous retail centers, motels and institutional facilities that cater to the needs of nearby residential and visitor populations.

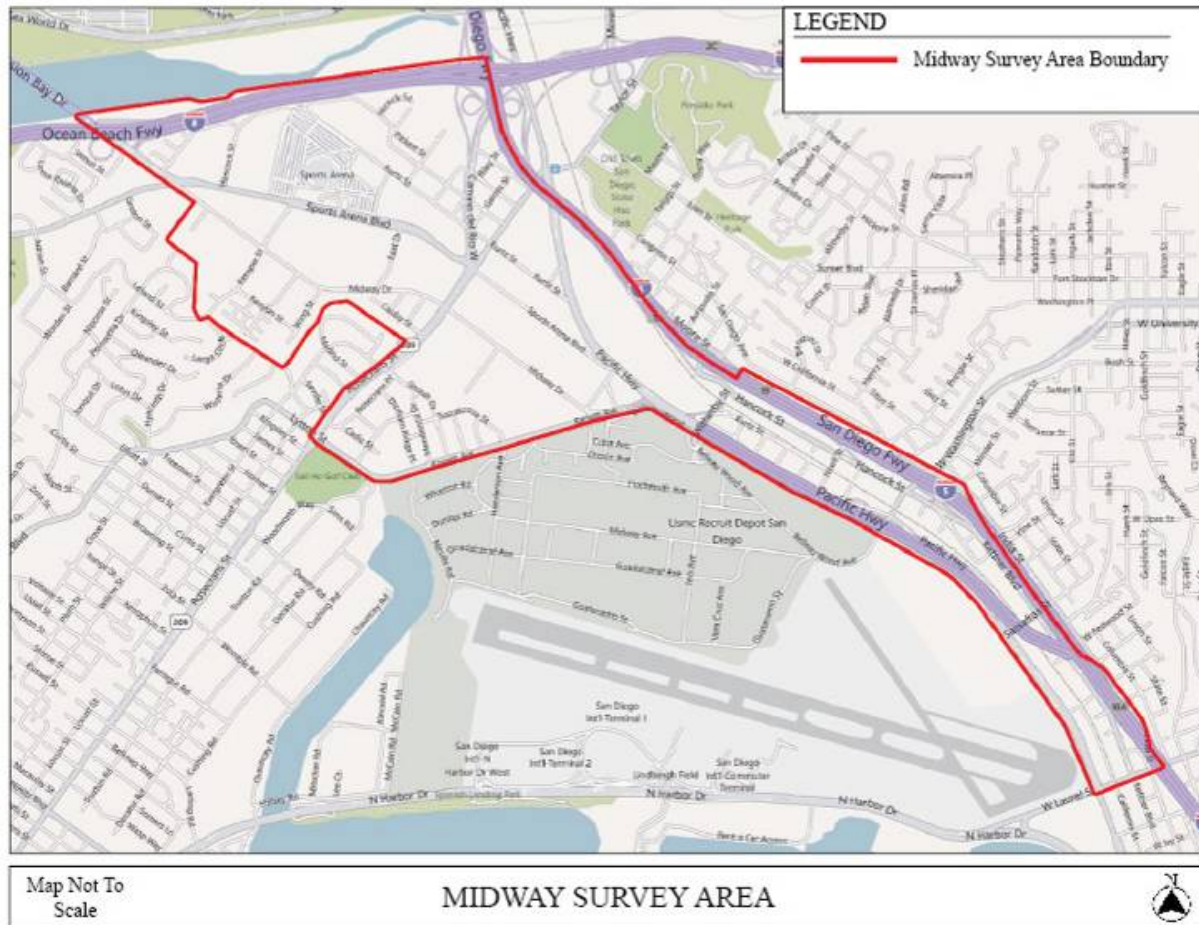


Figure 1: Map of survey area. **Source:** Bing Maps and Galvin Preservation Associates.

Interstate 8 (I-8) functions as the northern boundary. The San Diego River and the Mission Bay area are located north of I-8. The Pacific Highway corridor, located between Interstate 5 (I-5) and the Lindbergh Field (San Diego International Airport), contains some of the City's older industrial areas.

The Midway - Pacific Highway Historic Resource Reconnaissance Survey included the completion of a historic context statement, identification of known and potential historic resources, and preparation of a survey report. The purpose of the historic context statement was to provide a description of the broad patterns of development within the plan area, identify the historical themes significant to the development of the community, and describe the property types that convey those themes in a significant way. In keeping with the history of San Diego that is provided in the General Plan as Appendix E, HP-1, the historic context statement is organized by period and then theme, when appropriate. The property types that reflect those periods and themes were identified during the reconnaissance survey of the area. All parcels containing structures built before 1970 were surveyed. The project team recorded basic information on these buildings and documented the information in the City's Microsoft Access database. The City will use this database to generate State Inventory Forms (DPR 523 A). Evaluation codes were assigned based upon the eligibility requirements and integrity thresholds developed in the historic context statement.

Methods

Introduction

The historic context statement and reconnaissance survey were developed in accordance with the *Secretary of Interior's Standards and Guidelines for Historic Preservation* and *National Register Bulletin #24, Guidelines for Local Survey: A Basis for Preservation Planning*.

A historic context statement is a technical document that consists of specific sections recommended by the Secretary of the Interior in *National Register Bulletin #24: Guidelines for Local Surveys*. The bulletin defines a historic context as a body of information about historic properties organized by theme, place, and time. Historic context is linked with tangible historic resources through the concept of property type. A property type is a group of individual properties based on shared physical or associative characteristics. A historic context statement provides a framework for determining the relative significance of properties and evaluating their eligibility for landmark designation.

There are two types of historic resource surveys: reconnaissance and intensive. A reconnaissance survey includes a “once over” inspection of a community or neighborhood. Reconnaissance surveys are used to form the basis for more intensive, detailed survey efforts. During a reconnaissance survey, descriptive information about buildings, structures, and objects are collected and analyzed primarily through architecture and dates of construction.¹ Property specific research is not conducted and evaluations are considered preliminary.

Project Approach

The approach employed to complete this project included the following:

1. Meeting with the City Staff. The project team met with the City staff to identify the specific needs of the survey and to gather information on previous studies and known historic resources. The project manager clarified the goals for the City and reviewed the project scope and schedule.
2. Existing Information. The project team collected and reviewed existing information on the area including:
 - Local landmark application forms.
 - Midway - Pacific Highway Community Plan.
 - Historical Resources Inventory for Middletown Area.
 - San Diego History, San Diego General Plan.
3. Contextual Research. The project team identified information gaps and conducted additional contextual research. Archival research was conducted at the San Diego

¹ Historic Resource Survey Guidelines, City of San Diego, City Planning and Community Investment Division, July 2008, p. 1.

- Historical Society (historic photographs, historical documents and newspaper articles), San Diego Public Library (Historical San Diego Tribune newspaper database, San Diego city directories and newspaper clippings) and the Los Angeles Public Central Library (ProQuest Historical Los Angeles Times database and Sanborn maps). This information was used as a foundation for developing the historic contexts for the plan area.
4. Outline and Bibliography. The existing information and contextual research was used to develop the outlines and bibliographies for the historic context statement. The historic maps were used to identify the development patterns and determine the approximate build dates for the individual buildings. The general reference material was used to identify the significant themes and property types. The outline and bibliography were submitted to the City staff for comments and were revised accordingly.
 5. Historic Context Statement. A historic context statement was developed for the plan area. The historic context establishes the significant themes and property types that reflect those themes. Eligibility requirements and integrity thresholds were developed based upon the reconnaissance survey using local designation criteria. In keeping with the history of San Diego that is provided in the General Plan as Appendix E, HP-1, the historic context statement is organized by period: Spanish, Mexican, and American. But as the resources associated with the first two periods are either gone, addressed by a separate historic context statement for archeological resources, or already designated, themes were only developed for the American period. The context statement was submitted to the City staff for comments and was revised accordingly.
 6. Reconnaissance Survey. The project team conducted a reconnaissance level survey of all properties constructed prior to 1970 in the plan area. The project team digitally photographed each property that appeared to have been constructed prior to 1970 and took field notes on the materials, condition, alterations, and integrity of each property.
 7. Database. The City provided GPA with a Microsoft Access database that included a record for all parcels included in the Plan Area. The assessor parcel number was included for each record. In most cases, the record also included a street address and year built. When the address and/or year built were missing, the project team attempted to obtain the information from Parcel Quest. In some cases, the information was not available. Thus, circa dates were developed and based upon the physical attributes of the subject buildings. The project team also completed the fields in the database involving the descriptive and physical features of each property constructed prior to 1970 and attached photographs to the records. The City will use the information entered in the database to generate State Inventory Forms (DPR 523 A).
 8. Final Report. All survey results were analyzed and synthesized into this final report, including the historic context statement and reconnaissance survey data.

Criteria for Evaluating Properties

GPA worked with the City to identify buildings within the plan area that have the potential to meet federal, state, or local landmark criteria. The project team evaluated the buildings within their identified historic contexts to determine if they might be potentially eligible historic resources. Primarily, this project focused on City criteria to determine potential eligibility; however, surveyors also considered the National Register and California Register criteria in their evaluations. The following is a discussion of each set of the evaluation criteria.

National Register of Historic Places

The National Register is "an authoritative guide to be used by federal, state, and local governments, private groups and citizens to identify the nation's cultural resources and to indicate what properties should be considered for protection from destruction or impairment."²

Criteria

To be eligible for listing in the National Register, a property must be at least 50 years of age and possess significance in American history and culture, architecture, or archaeology. A property of potential significance must meet one or more of four established criteria:³

- A. Associated with events that have made a significant contribution to the broad patterns of our history; or
- B. Associated with the lives of persons significant in our past; or
- C. Embody the distinctive characteristics of a type, period, or method of construction or that represent the work of a master, or that possess high artistic values, or that represent a significant and distinguishable entity whose components may lack individual distinction; or
- D. Yield, or may be likely to yield, information important in prehistory or history.

Physical Integrity

Integrity is the ability of a property to convey its significance. To be listed in the National Register, a property must not only be shown to be significant under the criteria, but it also must have integrity. The evaluation of integrity is grounded in an understanding of a property's physical features and how they relate to its significance. The California Office of Historic Preservation and the City of San Diego utilizes the same aspects of integrity as the National Register.

Historic properties either retain integrity (this is, convey their significance) or they do not. Within the concept of integrity, the National Register criteria recognize seven aspects or qualities

² Title 36 Code of Federal Regulations Part 60.2.

³ Title 36 Code of Federal Regulations Part 60.4.

that, in various combinations, define integrity. These seven aspects include location, setting, design, materials, workmanship, feeling and association. To retain historic integrity a property will always possess several, and usually most, of the aspects. The retention of specific aspects of integrity is paramount for a property to convey its significance. Determining which of these aspects are most important to a particular property requires knowing why, where, and when the property is significant. The seven aspects of integrity are defined as follows:

- Location is the place where the historic property was constructed or the place where the historic event occurred.
- Design is the combination of elements that create the form, plan, space, structure, and style of a property.
- Setting is the physical environment of a historic property.
- Materials are the physical elements that were combined or deposited during a particular period of time and in a particular pattern or configuration to form a historic property.
- Workmanship is the physical evidence of the crafts of a particular culture or people during any given period in history or prehistory.
- Feeling is a property's expression of the aesthetic or historic sense of a particular period of time.
- Association is the direct link between an important historic event or person and a historic property.

Criteria Consideration G

Certain kinds of properties, like those less than 50 years of age, are not usually considered eligible for listing in the National Register. Fifty years is the general estimate of the time needed to develop historical perspective and to evaluate significance. These properties can be eligible for listing, however, if they meet special requirements called Criteria Considerations, in addition to meeting the regular requirements. *National Register Bulletin #15* states that a property less than 50 years of age may be eligible for the National Register if it is of exceptional importance.⁴ Demonstrating exceptional importance requires the development of a historic context statement for the resource being evaluated, a comparative analysis with similar resources, and scholarly sources on the property type and historic context.

California Register of Historical Resources

In 1992, Governor Wilson signed Assembly Bill 2881 into law establishing the California Register. The California Register is an authoritative guide used by state and local agencies, private groups and citizens to identify historic resources and to indicate what properties are to be protected, to the extent prudent and feasible, from substantial adverse impacts.

⁴ *National Register Bulletin #15*, p. 2.

The California Register consists of properties that are listed automatically as well as those that must be nominated through an application and public hearing process.⁵ The California Register automatically includes the following:

- California properties listed in the National Register and those formally Determined Eligible for the National Register;
- California Registered Historical Landmarks from No. 0770 onward; and
- Those California Points of Historical Interest that have been evaluated by the Office of Historic Preservation (OHP) and have been recommended to the State Historical Resources Commission for inclusion on the California Register.

The criteria for eligibility of listing in the California Register are based upon National Register criteria, but are identified as 1-4 instead of A-D. To be eligible for listing in the California Register, a property must be at least 50 years of age and possess significance at the local, state, or national level, under one or more of the following four criteria:

1. It is associated with events that have made a significant contribution to the broad patterns of local or regional history, or the cultural heritage of California or the United States; or
2. It is associated with the lives of persons important to local, California, or national history; or
3. It embodies the distinctive characteristics of a type, period, or method of construction or represents the work of a master, or possesses high artistic values; or
4. It has yielded, or has the potential to yield, information important in the prehistory or history of the local area, California, or the nation.

Historic resources eligible for listing in the California Register may include buildings, sites, structures, objects, and historic districts. Resources less than 50 years of age may be eligible if it can be demonstrated that sufficient time has passed to understand its historical importance. While the enabling legislation for the California Register is less rigorous with regard to the issue of integrity, there is the expectation that properties reflect their appearance during their period of significance.⁶

San Diego Register of Historic Resources

The Historical Resources Guidelines of the City of San Diego's Land Development Manual identifies the criteria under which a resource may be historically designated. It states that any improvement, building, structure, sign, interior element and fixture, site, place, district, area, or object may be designated a historic resource by the City of San Diego Historical Resources Board if it meets one of the following designation criteria:

⁵ Public Resources Code Section 5024.1.

⁶ Public Resources Code Section 4852.

- A. Exemplifies or reflects special elements of the City's, a community's, or a neighborhood's, historical, archeological, cultural, social, economic, political, aesthetic, engineering, landscaping, or architectural development; or
- B. Identified with persons or events significant in local, state, or national history; or
- C. Embodies distinctive characteristics of a style, type, period, or method of construction or is a valuable example of the use of indigenous materials or craftsmanship; or
- D. Is representative of the notable work of a master builder, designer, architect, engineer, landscape architect, interior designer, artist, or craftsman; or
- E. Is listed or has been determined eligible by the National Park Service for listing in the National Register of Historic Places or is listed or has been determined eligible by the State Historic Preservation Office for listing in the California Register of Historical Resources; or
- F. Is a finite group of resources related to one another in a clearly distinguishable way or is a geographically definable area or neighborhood containing improvements which have a special character, historical interest or aesthetic value or which represent one or more architectural periods or styles in the history and development of the City.

In addition to meeting one or more of the above criteria, a City of San Diego Register-eligible property must also retain sufficient integrity to convey its significance. Although the City's municipal code does use a 45-year threshold to review properties, which may be adversely impacted by development, a property need not be 45 years of age to be eligible for listing on the City's register.

The City's historic preservation program provides for the designation of individually significant resources as well as historic districts. A historic district is defined by the City's municipal code as "a significant concentration, linkage, or continuity of sites, buildings, structures, or objects that are united historically, geographically, or aesthetically by plan or physical development and that have a special character, historical interest, cultural or aesthetic value, or that represent one or more architectural periods or styles in the history and development of the City."

California Historical Resource Status Codes

As part of this survey effort, once the properties were evaluated for their historic significance they were each assigned a California Historical Resource Status Code. The California Historical Resource Status Codes are codes that were created by the Office of Historic Preservation (OHP) to classify historical resources in the state's inventory, which had been identified through a regulatory process or local government survey. The code system was initially created as National Register Status Codes in 1975 but has since been updated and changed in 2004 due to the ambiguity of the early coding system and changes in the needs of local governments' registration programs statewide to convey the significance of resources for purposes of the California

Environmental Quality Act (CEQA). Implicit within the status codes is a hierarchy reflecting the level of identification, evaluation, and designation to which a property had been subjected.

The evaluation instructions and classification system proscribed by OHP in its *Instructions for Recording Historical Resources* provide a three-digit evaluation code for use in classifying potential historic resources. The first digit indicates the general category of evaluation. The letter code indicates whether the resource is separately eligible (S), eligible as part of a district (D), or both (B). The third digit is a code that describes some of the circumstances or conditions of the evaluation. The following codes were used in this survey:

- 5S1. Individual property that is listed or designated locally.
- 5S3. Appears to be individually eligible for local listing or designation through survey evaluation.
- 6Z. Found ineligible for the National Register, California Register, or local designation through survey evaluation.
- 7R Identified in Reconnaissance Level Survey: Not evaluated.

Historic Context Statement

Introduction

The Midway - Pacific Highway Community Plan area encompasses approximately 800 acres of relatively flat land, which is situated north of Downtown between Old Town and the north end of the Peninsula Community Plan area. The community is comprised of two basic elements: the Midway area and the narrow, linear-shaped Pacific Highway corridor.

The Midway area consists of an urbanized commercial core containing numerous retail centers, motels and institutional facilities that cater to the needs of nearby residential and visitor populations. Wide streets, flat topography, and a mixture of large and small commercial buildings characterize the area. There are pockets of multi-family residential buildings in the western portion of the community, adjacent to the Peninsula Community Plan area. The Sports Arena, which is surrounded by acres of surface parking lots, is a focal point of the area. Interstate 8 (I-8) functions as the northern boundary. The San Diego River and the Mission Bay area are located north of I-8.

The Pacific Highway corridor, located between Interstate 5 (I-5) and the Lindbergh Field (San Diego International Airport), contains some of the City's older industrial areas. The image of the corridor is defined by large-scale buildings and unscreened commercial parking lots in the southern portion, and a group of smaller scale, low lying industrial buildings located between Witherby Street and Washington Street in the northern portion.

As part of the Midway - Pacific Highway Reconnaissance Survey, the following historic context statement was prepared. Historic context statements are intended to provide an analytical framework for identifying and evaluating resources by focusing on and concisely explaining what aspects of geography, history, and culture significantly shaped the physical development of a community or region's land use patterns and built environment over time; what important property types were associated with those developments; why they are important; and what characteristics they need to have to be considered an important representation of their type and context.

The significant themes and property types identified in the context will assist City staff in identifying significant extant resources within the built environment. The pre-contact and early contact periods and associated archaeological and cultural resources are addressed separately in the archaeology study prepared for the Community Plan Update.

The following context statement is organized in the same fashion as the historic context statement in the General Plan in that it is divided into periods based upon the government in power. The Spanish and Mexican Periods are included only as background as there are no extant property types associated with these periods in the plan area. The designated and potential historic resources in the plan area date from the American Period. The themes that influenced the development of the plan area during the American Period are discussed, as are the associated property types that represent those themes.

Spanish Period (1769-1822) ⁷

In spite of Juan Cabrillo's earlier landfall on Point Loma in 1542, the Spanish colonization of Alta California did not begin until 1769. Concerns over Russian and English interests in California motivated the Spanish government to send an expedition of soldiers, settlers, and missionaries to occupy and secure the northwestern borderlands of New Spain. This was to be accomplished through the establishment and cooperative inter-relationship of three institutions: the presidio, mission, and pueblo. In 1769 a land expedition led by Gaspar de Portola reached San Diego Bay, where they met those who had survived the trip by sea on the ships San Antonio and San Carlos. Initially camp was made on the shore of the bay in the area that is now downtown San Diego. Lack of water at this location, however, led to moving the camp in May to a small hill closer to the San Diego River and near the Kumeyaay village of Cosoy. Father Junípero Serra arrived in July of the same year to find the presidio serving mostly as a hospital. The Spanish built a primitive mission and presidio structure on the hill near the river. The first chapel was built of wooden stakes and had a roof made of tule reeds. Brush huts and temporary shelters were also built.

Just four months after the colonial project was initiated, the Kumeyaay staged an uprising. The Kumeyaay seized some of their possessions; however, the Spaniards themselves were not taken.⁸ While the mission attracted a few converts, friction between the Kumeyaay and Spanish lingered. By 1772 a stockade was constructed and included barracks for the soldiers. The Spanish also constructed a storehouse for supplies, a house for the missionaries, and the chapel, which had been improved. The original log and brush huts were gradually replaced with buildings made of adobe bricks. Pitched roofs with rounded roof tiles eventually replaced flat earthen roofs. Clay floors were eventually lined with fired brick.

In August 1774, the Spanish missionaries moved the Mission San Diego de Alcalá to its present location six miles up the San Diego River valley (modern Mission Valley) near the Kumeyaay village of Nipaguay. The presidio remained at its location on Presidio Hill. Begun as a thatched *jacal* chapel and compound built of willow poles, logs, and tules, the new mission was sacked and burned in the Kumeyaay uprising of November 5, 1775. The first adobe chapel was completed in October 1776, and the present church was begun the following year. A succession of building programs through 1813 resulted in the final rectilinear plan that included the church, bell tower, sacristy, courtyard, residential complex, workshops, corrals, gardens and cemetery.⁹ Orchards, reservoirs, and other agricultural installations were built to the south on the lower San Diego River alluvial terrace and were irrigated by a dam and aqueduct system. The mission system had a great effect on all Native American groups from the coast to the inland areas and was a dominant force in San Diego County.

As early as 1791, presidio commandants in California were given the authority to grant small

⁷ This section was largely extracted from "Appendix E, HP-1 San Diego History" in the *City of San Diego General Plan*. Adopted March 10, 2008.

⁸ The uprising took place on August 12 and 15, 1769. <http://www.kumeyaay.com/kumeyaay-history/40-spanish-contact.html>; accessed September 1, 2011.

⁹ Neuerburg 1986.

house lots and garden plots to soldiers and their families and some time after 1800, soldiers and their families began to move down from Presidio Hill and settle near the San Diego River. Historian William Smythe noted that Don Blas Aguilar, who was born in 1811, remembered at least 15 such grants below Presidio Hill by 1821, of which only five within the boundaries of what would become Old Town had houses in 1821. These included the retired commandant Francisco Ruiz adobe (now known as the Carrillo Adobe), another building later owned by Henry Fitch on Calhoun Street, the Ybanes and Serrano houses on Juan Street near Washington Street, and a small adobe house on the main plaza owned by Juan Jose Maria Marron.

Associated Property Types

There are no known or potential historic resources from the Spanish Period in the plan area. The La Playa Trail ran through the Midway area, generally corresponding to present-day Rosecrans Street. It was the main link between Old San Diego, the mission, and La Playa, which served as the port until Alonzo Horton founded New San Diego in 1869.¹⁰ Although it is considered the oldest European trail on the Pacific Coast, La Playa Trail is also known to have been an ancient Kumeyaay path.¹¹ The San Diego Historical Society initiated a program of marking the 12-mile trail in the early 1930s. Rose Hanks designed a four-foot high concrete marker that was placed in six locations. Olive trees were planted next to the markers and at half-mile intervals staggered from the left to the right side of the trail. One such marker is located west of the intersection of Midway Drive and Rosecrans Street.

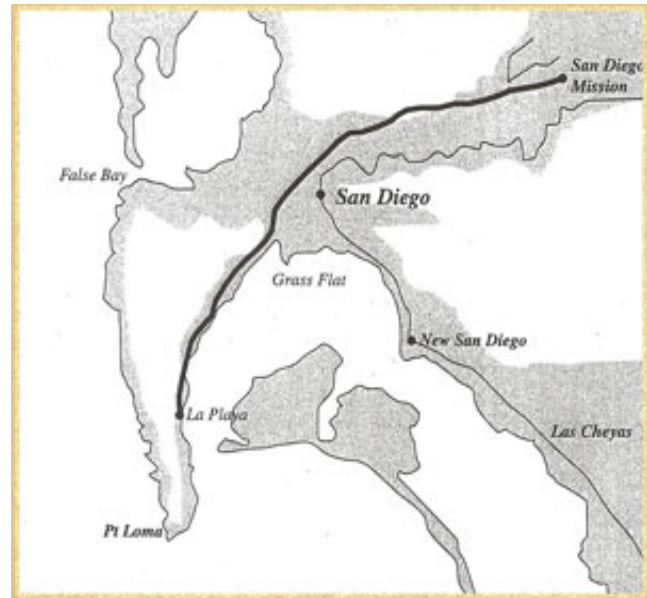


Figure 2: The Midway-Pacific Highway area was located on La Playa Trail.

Source: <http://www.laplayatrail.org/index.html>

Mexican Period (1822-1846)¹²

In 1822 the political situation changed as Mexico won its independence from Spain and San Diego became part of the Mexican Republic. The Mexican government opened California to foreign trade; began issuing private land grants in the early 1820s, creating the rancho system of large agricultural estates; began secularizing the Spanish missions in 1833; and oversaw the rise of the civilian pueblo. By 1827, as many as 30 homes existed around the central plaza in Old

¹⁰ "Marker Designed for Historic Old La Playa Trail," *San Diego Union*. July 9, 1933, p. 1.

¹¹ La Playa Trail, <http://www.laplayatrail.org/trail-history.html>; accessed September 7, 2011.

¹² This section was largely extracted from "Appendix E, HP-1 San Diego History" in the *City of San Diego General Plan*. Adopted March 10, 2008.

Town and in 1835, Mexico granted San Diego official pueblo status. At this time the town had a population of nearly 500 residents, later reaching a peak of roughly 600. But the location several miles away from navigable water was less than ideal. Imports and exports had to be carried over the La Playa Trail to anchorages in Point Loma.

Mission San Diego de Alcalá fared little better. In 1834 the Mexican government secularized the San Diego and San Luis Rey missions. The secularization in San Diego County had the effect of triggering increased Native American hostilities against the Californios during the late 1830s. The attacks on outlying ranchos, along with unstable political and economic factors helped San Diego's population decline to around 150 permanent residents by 1840. San Diego's official pueblo status was removed by 1838, and it was made a sub-prefecture of the Los Angeles pueblo. The town and the ship landing area at La Playa (present-day Point Loma) were now the centers of activity in Mexican San Diego. When the Americans took over after 1846, the situation had stabilized somewhat, and the population had increased to roughly 350 non-Native American residents.¹³

Associated Property Types

There are no known or potential extant historic resources from the Mexican Period in the plan area.

American Period (1846 - 1970)

When United States military forces occupied San Diego in July 1846, the town's residents split on their course of action. Many of the town's leaders sided with the Americans, while other prominent families opposed the United States invasion. In December 1846, a group of Californios under Andres Pico engaged U.S. Army forces under General Stephen Kearney at the Battle of San Pasqual near present-day Escondido and inflicted many casualties. However, the Californio resistance was defeated in two small battles near Los Angeles and effectively ended by January 1847. The Americans assumed formal control with the Treaty of Guadalupe-Hidalgo in 1848 and introduced Anglo culture and society, American political institutions, and especially American entrepreneurial commerce.

On February 18, 1850, the California State Legislature formally organized San Diego County. The first elections were held at San Diego and La Playa on April 1, 1850 for county officers. San Diego grew slowly during the next decade. Old Town remained the largest development within San Diego, it occupied a total of 48,557 acres of former pueblo land and consisted of approximately 65 buildings, many of which were of adobe construction.¹⁴ A small portion of the Midway - Pacific Highway area northeast of present-day Kurtz Street and northwest of present-day Witherby Street was historically part of Old Town.

¹³ Killea 1966:24-32; Hughes 1975:6-7.

¹⁴Ibid.

In the 1850s when the first attempt was made to build a city on the present area of Downtown, a group of Old Town citizens bought the land to the south of Old Town and established a rival subdivision closer to the bay. The subdivision began around present-day Witherby Street and extended south along the shoreline of the bay to about present-day A Street. The land was granted by Joshua H. Bean to a group of ten investors including Oliver S. Witherby, William H. Emory, Thomas W. Sutherland, Jose Maris Estudillo, and Charles P. Noell. The portion of the land that was subdivided and laid out into streets, squares, blocks, and lots was designated Middletown. The Pacific Highway corridor occupies the other, undivided portions referred to as the reservations and the tidelands.¹⁵

The development of Middletown, as well as Old Town, was stymied by a severe drought, followed by the onset of the Civil War. The troubles led to an actual drop in the town's population from 650 in 1850, to 539 in 1860.¹⁶ Not until land speculator and developer Alonzo Horton arrived in 1867 did San Diego begin to develop fully into an active American town.¹⁷

Alonzo Horton's development of New Town in 1867 began to swing the community focus away from Old Town and began the urbanization of San Diego. He purchased 800 acres and began an aggressive promotional campaign, offering free lots to anyone who would build a house worth \$500 on it. Horton's successful promotion attracted other speculators and developers to San Diego, and within the next five years 15 new subdivisions were laid out around Horton's Addition. Development centered on 5th Avenue and Market Street, and spread beyond downtown based on a variety of factors, including the availability of potable water and transportation corridors. Factors such as views and access to public facilities affected land values, which in turn affected the character of neighborhoods that developed.

1868 and 1869 were boom years, with steady growth over the next four years until the economic panic of 1873. Population dropped to 1,500 in 1875, but then rebounded. San Diego's civic

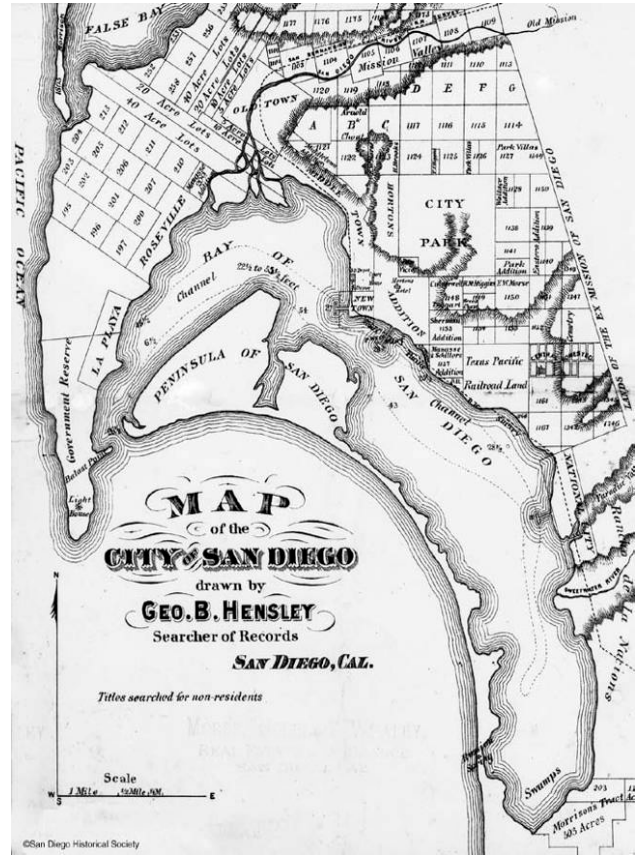


Figure 3: Historically, the Midway-Pacific Highway area included the southwest edge of Old Town and portions of Middletown at the mouth of the San Diego River.

Source: Hensley's Map of San Diego, 1873.

¹⁵ Brandes, Dr. Ray. Historic Resources Inventory for the Middletown Area, University of San Diego, 1981.

¹⁶ Garcia 1975:77.

¹⁷ MacPhail 1979.

leaders continued to focus on the development of the railroad. Construction of the Santa Fe Railroad began in 1880 and the first trains arrived in San Diego in 1882, leading to a period of renewed and steady growth. During the late 1800s and early 1900s, the areas of Golden Hill, Uptown, Banker's Hill, and Sherman Heights, located on hills immediately adjacent to downtown, were developed.

This period of steady growth was followed by another boom that resulted in a population of 35,000 and a full-fledged land investment and speculation frenzy, which created 30 new real estate tracts countywide by 1888. These new tracts included the areas of Hillcrest and University Heights, located roughly two miles outside of the downtown core and accessed by new streetcar lines running along 4th Avenue and Switzer Canyon into the Uptown area. These and other first ring subdivisions located on the periphery of downtown became San Diego's first streetcar suburbs. The boom resulted in over \$10 million in new improvements, including paving, electrical street lights and railways, sewage systems, and new construction before ending suddenly when the bottom fell out of the real estate market in the spring of 1888. By the 1890's the city's population settled to around 17,000.

Although it would appear that the Midway - Pacific Highway corridor area was conveniently located between Old Town and New Town, attempts at development floundered because of the swamp-like conditions. Historically, the Midway area was part of the San Diego River delta, comprising the flat land between the hill of the San Diego Presidio and the hills of Point Loma. The San Diego River switched back and forth between emptying into Mission Bay and emptying through the Midway area into the San Diego Bay. The silt it carried built sand bars and eventually blocked channels. To protect the main harbor from these deposits, the U.S. Army Corps of Engineers decided to make the Mission Bay route of the river permanent. In 1853 George Derby, an army land surveyor, engineered the construction of a dike just south of the present flood channel, extending northeasterly from what is now the junction of Midway Drive and Sports Arena Boulevard. The building of this dike decided the supremacy of San Diego Bay. Later known as Derby's Dike, it was rebuilt in 1877.¹⁸ Now gone, the Derby Dike Site at the foot of Presidio Hill is designated San Diego Historical Resources Board Site #28.

One of the early settlers to the area was Louis Rose, the first Jewish resident in San Diego. He arrived in 1850 and began to purchase land between Old Town and La Playa. Eventually the area was called Roseville.¹⁹ Soon more Jews settled in San Diego. By 1861, they organized Adath Joshurun under the leadership of Marcus Schiller. Top priority would be acquiring land for a Jewish cemetery. Rose answered the need by deeding Adath Joshurun five acres on present-day Kenyon Street. Rose and Schiller were both buried there.

¹⁸ Papageorge, Nan Taylor. "The Role of the San Diego River in the Development of Mission Valley," *The Journal of San Diego History*. Vol. 17, No. 2, Spring 1971.

¹⁹ While Roseville was based further south in the Point Loma area, it apparently reached into the southwest portion of Midway. Rose also owned property in Old Town.



Figure 4: Louis Rose. **Source:** <http://www.sandiegohistory.org/bio/rose/rose.htm>

Rose aimed to establish a new town site whose first settlers would be the employees of one of his business ventures. Sale of lots was recorded in 1873, with prices ranging from \$75 to \$125. But while Old Town grew south and Horton's Addition was taking off, Roseville failed to attract settlers. As such the cemetery was not in a fitting location for the Jewish community. Congregation Beth Israel petitioned the City for land in Mount Hope Cemetery for a new Jewish burial ground. They received the land in 1892, establishing the Home of Peace Cemetery. With Home of Peace available, the Jewish community discontinued use of the old cemetery. In 1937, they reinterred those buried at the old cemetery into the Home of Peace, but retained ownership of the land.²⁰ The site is known as the Hebrew Cemetery and is designated San Diego Historical Resources Board Site #48.

The forces that shaped the development of the Midway - Pacific Highway Plan Area during the late 19th and early 20th centuries were transportation improvements and early industries as well as the presence of the airport and military.

Yet large sections of the area remained undeveloped. During World War II, areas along Pacific Highway were used for numerous defense industries. The post-war development of the area mainly consisted of small warehouses and commercial buildings that sprang up in a rather haphazard fashion. The remainder of the historic context statement explores these themes in more detail and discusses the associated property types.

Theme: Transportation Improvements and Early Industrial Development (1882 – 1914)

At the turn of the century, Horton's Addition was firmly established as the new town site and development spread from there. During this period neighborhoods such as Golden Hill, Uptown, and Sherman Heights were subdivided. The fact that the Pacific Highway corridor was bypassed for residential development allowed it to emerge as a transportation corridor for railroads, streetcars, and automobiles. However, it mainly functioned as a place one passed through rather than as a destination.

Since the 1830s, the citizens of San Diego had attempted to establish a direct rail link to the east. A rail link was an integral component to the vision some held of San Diego as a major seaport. Various companies were formed and routes were surveyed. The desired route was a direct connection with the Atlantic & Pacific in eastern California. Despite the fact that the community raised funds to subsidize the ventures, they all ended in failure. The line that was eventually opened is called the Surf Line, because much of the line is within a 100 feet of the Pacific Ocean. The line started as the California Southern Railroad. The first section opened in 1882 and

²⁰ Bissell, Laurie. "San Diego Cemeteries: A Brief Guide," *The Journal of San Diego History*, Vol. 28, No. 4, Fall 1982; During World War II Congregation Beth Israel leased the land to the federal government for a housing project called the Frontier Homes.

connected National City to Oceanside, passing through the Midway-Pacific Highway Plan Area. The line became part of the Santa Fe Railroad's transcontinental rail line in 1885 via an extension of the California Southern from Colton to Barstow. The line through the Midway - Pacific Highway Plan Area was located at the bottom of and along the bluff that separates the area from Old Town. Without a stop in the area, however, the railroad line failed to ignite development.

A real estate boom in the spring of 1887 brought thousands of people to Southern California, many of them traveling on the Santa Fe Railroad to San Diego. During the boom, developers realized the need for convenient public transportation. In 1887, San Diego's Electric Rapid Transit Company introduced the first electric street railway system in the western U.S. It traversed the Pacific Highway corridor from D Street (now Broadway) in downtown to Old Town along Arctic Street (now Kettner Boulevard). The line was called the San Diego & Old Town Railway. A number of other lines emerged and faded. No fewer than 17 streetcar and interurban companies vied for track space in downtown.²¹ Eventually John D. Spreckels consolidated virtually all of them under the banner of the San Diego Electric Railroad Company.

The streetcar line through the Midway - Pacific Highway Plan Area is remembered as the Old Number Sixteen. It traveled north on Kettner Boulevard, then to Hancock and the Five Points area. It generally paralleled the Santa Fe Railroad line until it turned south around Witherby to connect to Barnett. The line serviced the Marine Corps Recruit Depot. Even during the 1930s, streetcar passengers traveling through the area described it as a salt marsh with open meadows.²² During the early 1940s, the line was discontinued and the tracks were paved over in an effort to improve the roadway for automobiles.²³

Pacific Highway was one of the first paved roads through the area. At one time, it was part of Highway 101. While the southern terminus of Highway 101 is now Los Angeles, it used to travel all the way south through San Diego to the Mexican border in San Ysidro. However, this part was decommissioned and replaced in the late 1960s by Interstate 5. Significant portions of Highway 101 were historically part of El Camino Real, the route that connected Alta California's missions, presidios, and pueblos. It served as the main north-south road in California until the 1920s. Highway 101 was one of the first highways designated by the Bureau of Public Roads in 1925. Existing sections of roadway were designated as routes and marked by signs so that motorists could find their way from one town to the next. Long distance automobile runs became a popular form of amusement, and soon auto camps were developed to provide over night accommodations.

During the late 19th and early 20th centuries, development in the area remained limited. There were a few isolated residential and commercial buildings. Located at 1751 Hancock Avenue, one

²¹ Holle, Gena. "Transit in San Diego: ASCE Anniversary Project," *The Journal of San Diego History*, Vol. 48, No. 1, Winter 2002.

²² Locker, Zelma Bays. "Remembering Old Number Sixteen," *The Journal of San Diego History*, Vol. 23, No. 4, Fall 1977.

²³ "Opening of Side Streets Seen Between Kettner, Highway," *San Diego Union*, January 19, 1940.

of the earliest businesses in the area was the Mission Brewery. August Lang, a German immigrant purchased block 183 of the Middletown Addition in 1912 for the purposes of building a brewery. He hired another German immigrant as his architect, Richard Griesser. The quality of the local water was noted as an important reason for locating in San Diego. A bottling plant was constructed across Washington Street. With the impending passage of the National Prohibition Act, the brewery closed in 1918. The property was sold to the American Agar Company in 1923. The Mission Brewery is designated San Diego Historical Resources Board Site #232 and is also listed in the National Register of Historic Places. The Mission Brewery Bottling Plant is designated San Diego Historical Resources Board Site #1040.

Associated Property Types



Figure 5: The Mission Brewery is listed in the National Register of Historic Places. **Source:** <http://www.sandiegohistory.org/collections/brewery/brewery.htm>

While the early transportation improvements during the late 19th and early 20th centuries influenced the later development of the plan area, there are no directly related property types remaining. The research indicated that industrial buildings were constructed in the plan area during this period; the only ones remaining are the Mission Brewery and Bottling Plant, which are already listed. According to the reconnaissance survey, the other buildings remaining from this period are isolated single-family residences.

Residential – Single-family Residences

A few individuals constructed small houses in the plan area in the early part of the 20th century. They are not concentrated in any particular area, but rather scattered about. Most can be described as vernacular turn of the century cottages or Craftsman bungalows. They are one-story in height, sheathed in wood clapboard or shingles, and covered by gabled roofs. Some have been converted to commercial uses.

Criteria: San Diego Register Criteria A, B & C

Evaluation of Individual Resources: Single-family residences may be individually significant under Criterion A as a rare surviving example of a property type that played an important role in the development of the community. Examples of this property type may also be eligible under Criterion B if they were the homes of persons significant in local history. Additionally, single-family residences may be eligible under Criterion C if they embody the distinctive characteristics of a style, type, period, or method of construction. These buildings will possess the character-defining features of the style they represent (see the Architectural Styles in Appendix I). Considering the fact that there were once many but now few, even representative examples of

single-family residential types and styles may qualify.

Essential Factors of Integrity: Under Criterion B, location, setting, feeling, and association must be strongly present. Setting, design, materials, and feeling must be retained in the evaluation under Criterion C. In both cases, the use of the building may have changed. It is assumed that the general setting will have changed since the period of significance; however, the immediate setting should remain intact.

Theme: Military, Aerospace, and Related Industrial Development (1901 - 1953)

As early as 1900, San Diegans initiated efforts to attract the attention of the Navy Department in hopes that officials would choose it for naval bases and other shore activities. The military presence in San Diego began in 1901 with the establishment of the Navy Coaling Station in Point Loma. William Kettner is credited with the expansion of the military presence during the 1920s. In 1908, Kettner, a local businessman and recent transplant to San Diego, headed the program to welcome Theodore Roosevelt's "Great White Fleet" to San Diego harbor in April as it completed a circumnavigation of the world. Kettner immediately recognized the benefit of a military presence in San Diego, which would bring federal resources and national attention to the City. San Diego's harbor required immediate attention. Dredging was urgently needed to enable large

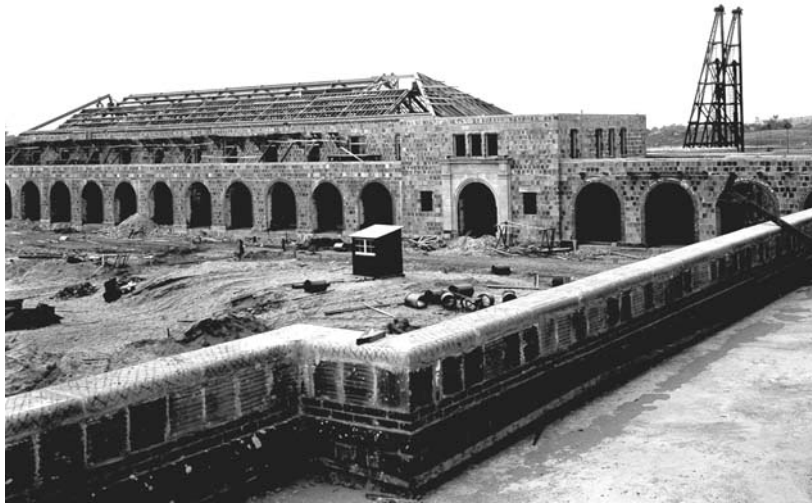


Figure 6: Marine Corps Recruit Depot under construction.

Source: <http://www.sandiegohistory.org/timeline/images/6917.jpg>

ships to enter. It seemed a logical sequence would then follow: goods, trade, employment, and the development of a respectable commercial center. Upon his election to Congress in 1912, Kettner eventually convinced George Dewey, Admiral of the Navy, that the dredging of San Diego Bay was not only feasible, but also advantageous to the Navy. With Dewey's endorsement, the Senate Commerce Committee came forth with several large appropriations for San Diego.

Kettner brought congressmen, senators, and high ranking government officials from all over the United States through the 1915 Exposition grounds, including Franklin D. Roosevelt, Assistant Secretary of the Navy, who gave Kettner the impression he felt Naval recruits would fare better, health-wise, in a climate such as San Diego's. Kettner was introduced to Colonel Joseph Pendleton and Major General George Barnett. Kettner caught Barnett's attention and convinced him of his idea for the location of a new Marine base in Dutch Flats south of present-day Barnett Avenue and Pacific Highway.²⁴ Together Kettner and Barnett reached Roosevelt, already

²⁴ Shragge, Abraham. "I Like the Cut of Your Jib: Culture of Accommodation Between the U.S. Navy and Citizens of San Diego, California, 1900-1951," *The Journal of San Diego History*, Vol. 48, No. 3, Summer 2002.

enthusiastic about San Diego as the location for a new Naval Training Center. Both the Naval Training Center and the Marine Corps Recruit Depot were built in the early 1920s. Construction on the low-lying Dutch Flats area was accomplished only after a massive dredging and filling operation. Although they are located outside of the Midway - Pacific Highway Plan Area, they had a profound influence over the development of the area.

The development of the aerospace industry in San Diego also began in the Dutch Flats area. In 1922, T. Claude Ryan opened up a flying school in the Dutch Flats area, which led to the opening of a manufacturing plant. Ryan Airlines developed some of the most creative designs in aviation history, including a custom M 1 monoplane for Charles Lindbergh. Lindbergh tested the plane called the *Spirit of St. Louis* at Ryan Field before his 1927 nonstop solo flight from New York to Paris. The first regularly scheduled airline in America, the San Diego – Los Angeles Airline, operated out of this field beginning in 1925.²⁵ In 1934 Ryan formed the Ryan Aeronautical Company, and the school eventually became a subsidiary. During World War II, the school trained thousands of Army pilots. Ryan also had contracts with the Navy to build aircraft. Teledyne acquired the company in 1968. Now gone, Ryan Field was located near the intersection of Midway Drive and Barnett Avenues.²⁶ The Dutch Flats/Ryan Field site was designated as HRB Site #249 in 1990.



Figure 7: Ryan Field was located in the Dutch Flats area near the present-day intersection of Midway Drive and Barnett Avenue. **Source:** http://www.dmairfield.org/places/sandiego_ca/images/Ryan_Field_SDAM.jpg

Inspired by Lindbergh's historic flight, the City of San Diego passed a bond issue in 1928 for construction of a two-runway municipal airport. Lindbergh himself encouraged the idea and agreed to lend his name to it. Dedicated on August 16, 1928, it was called San Diego Municipal Airport – Lindbergh Field. The airport was the first federally certified airport to serve all types of aircraft, including seaplanes. The original terminal was located on the northeastern side of the field, along Pacific Highway.

World War II brought significant change to the airfield when the Army Air Corps took it over in 1942 to support the war effort. The infrastructure of the airport was improved to handle the

²⁵ City of San Diego Historical Site Board Register Form, no date.

²⁶ Ryan Aeronautical Company <http://www.centennialofflight.gov/essay/Aerospace/Ryan>; accessed January 26, 2010.

heavy bombers being manufactured in the region during the war. This transformation, including the 8,750-foot runway, made the airport jet ready long before jet passenger plans came into widespread service. After the war, commercial air service at Lindbergh Field expanded rapidly. In 1960, Lindbergh Field gained its first jet service.

The greatest impact to San Diego's aerospace industry was the arrival of Consolidated Aircraft. The company was founded in 1923 by Reuben H. Fleet in Buffalo, New York. He served as a pilot in the U.S. Army during World War I and organized the first airmail service in 1918. In 1935, Fleet moved the company to San Diego because the weather in Buffalo was not suitable for test flights much of the year. Consolidated Aircraft constructed a new plant on the northeast side of Lindbergh Field. In his dedicatory address, Major Fleet noted that, "We have now \$9 million of unfilled orders which will occupy the new plant at 80% capacity on a one-shift basis for a year and a half. We have 874 employees now, should have 2,000 within six months and about 3,000 next summer....Our directors seriously questioned the advisability of moving here [to San Diego] because we were in the valley of the world's worst depression. Finally we made up our minds to have faith in the future...."²⁷



Figure 8: Consolidated Aircraft, early 1940s, looking southwest.
Source: <http://www.spawar.navy.mil/sti/visualmedia/photos/otc40s.html>.

By the end of the Depression, 9,000 employees worked for Consolidated and the physical plant doubled in size. Still not large enough, another plant was constructed between Pacific Highway and Kurtz Street, northwest of Witherby Street in 1943. That same year Vultee Aircraft Inc. bought operating control of Consolidated Aircraft and became Consolidated Vultee Aircraft (Convair). Convair was headquartered in San Diego. A majority interest in Convair was purchased by General Dynamics in 1953. The company continued to produce aircraft and aircraft components until being sold to McDonnell Douglas in 1994.

Consolidated Aircraft was the giant among San Diego manufacturing companies and brought about the establishment of smaller firms, all designed to produce aircraft tooling, parts, and sub-

²⁷ Wagner, William. *Reuben Fleet and the Story of Consolidated Aircraft*. Fallbrook: Aero Publishing Inc., 1976, p. 182-183.

assemblies. During the war years, San Diego's population soared due to a massive influx of military personnel and defense workers. The population of San Diego County grew from 289,348 in 1940 to over 400,000 in 1945. The impact of the population growth affected housing, transportation, and schools.



Figure 9: Frontier Housing Project, 1946, looking northwest along Midway Drive. Fordham Street crosses Midway Drive in the foreground.

Source: <http://www.johnfry.com/pages/PhotoRozelle48.html>.

The City attempted to assist in the search for homes by developing a Defense Housing Commission, which listed available vacancies within the area. The City also lifted ordinances against rooming houses in residential zones, but nothing could meet the continuous immigration of defense workers. Finally, in 1940, the federal government passed the Lanham Act, which appropriated \$150 million to the Federal Works Agency to provide massive amounts of housing in congested defense industry centers. The development of defense housing units within San Diego would be located in undeveloped areas both east and north of the city's downtown.²⁸ The Frontier Housing

Project was one of the largest such developments.²⁹ It was located at the intersection of Midway and Rosecrans. In 1943, the Federal Public Housing Agency took bids for the construction of 3,500 temporary dwelling units. By May of 1944, 1,100 units were ready for occupancy. Although the buildings were only intended to last for two years, some remained for 20. Between 1954 and 1955, the Federal government relinquished control of the property to the City of San Diego. But by then, Navy families and San Diego State University students occupied many of the units.

Associated Property Types

Property types associated with this theme include industrial buildings, which can be categorized by type relating to their specific function. The two most common types of industrial buildings present in the plan area are multi-use warehouses such as the building at 1929 Hancock Avenue and light manufacturing buildings like the one at 3430 Hancock Avenue. They are mostly concentrated in two areas: the Pacific Highway corridor and the northeast area of Midway. The residential buildings specifically constructed to house defense workers have been demolished.

²⁸ *San Diego Modernism Context Statement*, City of San Diego, 2007, p. 33.

²⁹ Linda Vista was the largest project. It consisted of 3,000 permanent dwelling units that were sold after the war.

Industrial – Multi-use Warehouses

There are numerous multi-use warehouses in the plan area that are concentrated in the two areas described above. Warehouses used for industrial or commercial purposes generally have the same physical characteristics. More often than not, these buildings were designed without the benefit of an architect. Most constructed during this period have reinforced concrete or steel-framed structures. The development of steel truss roof systems allowed for large unbroken expanses of floor areas for the storage of goods. Many of the warehouses in the plan area are utilitarian in design and box-like in shape. Some are sheathed in sheet metal, while others are concrete block structures. They may have flat or gabled roofs. A few Quonset huts are present in the area and are used as warehouses. While some warehouses have loading docks, others have large sliding doors so that automobiles and trucks can drive directly into the building.

Criteria: San Diego Register Criteria A & C

Evaluation of Individual Resources:

Multi-use warehouses may be individually significant under Criterion A, if they reflect a special element of the plan area's historical or economic development and are directly related to this theme. They must be strongly associated with a company or business enterprise that played an important role in the history of the military, aerospace, and

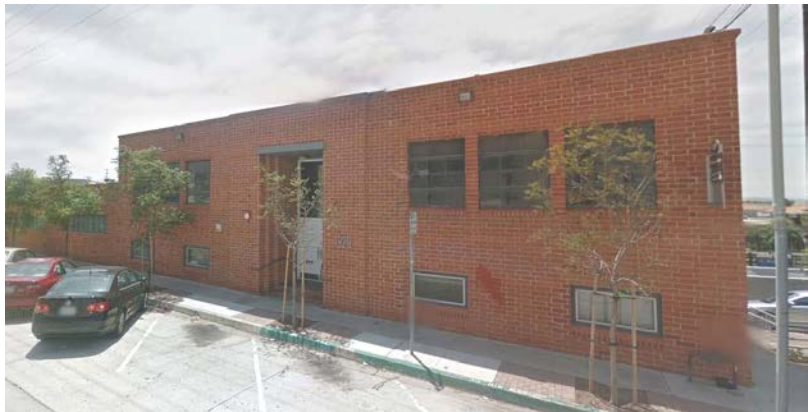


Figure 10: 1929 Hancock Avenue

related industrial development of the plan area. These buildings may also be eligible under Criterion C if they embody the distinctive characteristics of a style, type, period, or method of construction. Good examples of multi-use warehouses will reflect their original function and the era in which they were constructed. A few buildings or structures on a single parcel should be evaluated as a single resource. Large collections of buildings or structures on multiple parcels may be evaluated as individual resources or as historic districts, as appropriate.

Essential Factors of Integrity: Location, setting, association, and feeling are the essential factors of integrity under Criterion A. Setting, design, materials, and workmanship must be strongly present in the evaluation of integrity under Criterion C.

Industrial – Light Manufacturing Buildings

Light manufacturing buildings tend to be more substantial in size and construction than warehouses. In terms of architectural treatment, they fall into two categories: those clothed in the popular styles of the day and those purely functional and utilitarian in design. The application of a style is often limited to the façade or front office portion of the building. Most constructed during this period have reinforced concrete or steel-framed structures. Unlike warehouses with

solid exterior walls, the spaces between the columns are filled with steel-framed windows or maximum daylight. Light manufacturing buildings often feature repeating rows of north facing clerestory windows that create a saw tooth roof shape. Operable sections allow for ventilation.

Criteria: San Diego Register Criteria A & C

Evaluation of Individual Resources: Light manufacturing buildings may be individually significant under Criterion A, if they reflect a special element of the plan area's historical or economic development and are directly related to this theme. They must be strongly associated with a company or business enterprise that played an important role in the history of the military, aerospace, and related industrial development of the plan area. Buildings that exemplify the architectural development of the plan area will possess the character-defining features of the style they represent (see the Architectural Styles in Appendix I). These buildings may also be eligible under Criterion C if they embody the distinctive characteristics of a style, type, period, or method of construction. Good examples of light manufacturing buildings will reflect their original function and the era in which they were constructed. A few buildings or structures on a single parcel should be evaluated as a single resource. Large collections of buildings or structures on multiple parcels may be evaluated as individual resources or historic districts, as appropriate.

Essential Factors of Integrity: Under Criterion A, location, setting, feeling, and association must be strongly present. Setting, design, materials, and workmanship must be strongly present in the evaluation of integrity under Criterion C. Manufacturing equipment should not play a role in the evaluation of integrity as it is replaced as technology changes.

Theme: Post War Commercial and Residential Development (1945-1970)

After World War II small warehouses and industrial buildings began to fill in the undeveloped areas along the Pacific Highway corridor. The Consolidated Aircraft plant continued to be a strong visual element and economic force in the area. The Midway area gave way to commercial strip and shopping center development that mainly catered to nearby residential and visitor populations. Streets were widened, removed, and renamed to facilitate the movement of automobiles. Interstate 5 and 8 were constructed, which formed rigid barriers between the neighborhoods on the north and east.

Prior to World War II, the commercial and residential development of the area was random and sparse. A few homesteaders constructed small houses, but the earth was too sandy or salty for agriculture. Commercial businesses were largely related to the airport, aircraft plants, and military bases. The city directory for 1941



Figure 11: The Loma Theater opened in 1944.
Source: <http://www.sandiegohistory.org/collections/theaters/theaters.htm>.

lists one house and one business on Midway south of Rosecrans. The few other businesses in the area were mostly gas stations and drive-in restaurants like Topsy's and the Bali. The Loma Theater opened in 1944, just before the end of war. However, it is more closely associated with the post-war history of the area. It was designed by the renowned theater architect S. Charles Lee. The *Sound of Music* opened in the theater in 1965 and played for an astounding 133 weeks. The theater closed in 1988 and is now a book store.

During the 1950s, several of the large parcels occupied by the Frontier Housing Project were purchased by the City of San Diego and later sold for development. According to an article in the *San Diego Union*, the population of the area declined by 10,000, which caused a major drop in sales at local retail establishments. A master plan was developed for 500 acres, but failed to attract interest. Instead commercial business continued to be oriented toward the automobile and mainly consisted of freestanding buildings surrounded by large surface parking lots. Consequently, they are physically and architecturally disconnected from each other. The 1956 Sanborn map documents the presence of several motels and auto camps in the area interspersed with single-family residences, commercial buildings, and vacant lots. Businesses that required large flat parcels such as lumberyards, drive-in theaters, and nurseries also began to locate in the area. For example, the Midway Drive-in Theater opened in 1948 at the intersection of Midway Drive and West Point Loma Boulevard. It was demolished in 1981 and replaced with an apartment complex.

The character of the area that exists today began to take shape during the 1960s. Modern commercial buildings were constructed on vacant lots or replaced older commercial and residential buildings. The building at 3564 Kettner Boulevard is one of several automobile showrooms that were constructed during this decade. Automobile related businesses such as service stations and garages were also attracted to the Pacific Highway area. This can be attributed to the car culture that blossomed after World War II as well as the development of two freeways in the area, Interstate 5 and 8. Multi-family residential complexes also began appearing in the Midway area during the 1960s. The Loma Portal Apartment complex at 3131 Cauby Street is representative of this type.

The greatest change to the area in the 1960s was the construction of the International Sports Arena. It was constructed by Trepte Construction Company and designed by Victor Meyer, an architect who was vice president of development and design. As early as the 1950s, San Diego had been seeking to attract professional sports franchises. Robert Breitbard acquired the Gulls, then a member of the Western Hockey League and then laid plans for the construction of an indoor arena. The land was formerly part of the Frontier Housing Project and owned by the City of San Diego; however, the \$6,500,000 for construction was privately financed. The arena opened in November of 1966. It was designed for seating 13,500 hockey and 16,000 for other sporting and public events. Within a year a professional basketball team, the San Diego Rockets, was added. The Gulls continued to play in the arena until 1995 when the team disbanded. A variety of restaurants cropped up in the area to feed hungry sports fans before or after games.



Figure 12: San Diego International Sports Arena, artist's rendering. **Source:** [http://www.the-doorsworld.com/pics/clubs%20hallen/ USA/ Offene%20 Arena/San-Diego-International-Spo.jpg](http://www.the-doorsworld.com/pics/clubs%20hallen/USA/Offene%20Arena/San-Diego-International-Spo.jpg)

Associated Property Types

The San Diego Modernism Historic Context Statement was prepared in 2007. It should be used in the evaluation of property types from the post-war period. Property types associated with this theme in the plan area include residential and commercial buildings. Residential buildings are almost exclusively apartment buildings, while commercial buildings are represented by a wide variety of types including restaurants, retail buildings, shopping centers, motels, gas stations, branch banks, grocery stores, and automobile dealerships. Residential buildings are concentrated in the Midway area, northwest of Rosecrans Avenue. Post-war commercial buildings are found throughout the plan area. Those in the Pacific Highway corridor tend to be oriented toward the airport such as rental car businesses. When only one or two examples of a property type from the period were observed in the field, separate registration requirements were not developed.

Residential – Single-family Residences

Sanborn maps from the 1950s indicate that at one time there were significant concentrations of single-family residences in the area. They were usually mixed with commercial and industrial uses. Most have been demolished so those that remain are isolated. There is one small pocket of single-family residences near Rosecrans and Lytton. Most single-family residences are one-story in height and have no particular style. A few have Minimal Traditional characteristics.

Criteria: San Diego Register Criterion C

Evaluation of Individual Resources: Single-family residences may be individually significant under Criterion C if they embody the distinctive characteristics of a style, type, period, or method of construction. These buildings will possess the character-defining features of the style they

represent (see the Architectural Styles in Appendix I as well as the San Diego Modernism Historic Context Statement).

Essential Factors of Integrity: Setting, design, materials, and workmanship must be strongly present in the evaluation of integrity under Criterion C.

Residential - Apartment Buildings

The post-war period was marked by the construction of an increasing number of apartment buildings. This was largely in response to the overall housing shortage that created a need for higher density to accommodate the influx of new residents. It should be noted that apartment buildings from this period typically include at least six units and usually more. The two most common multi-family housing types in the area are dingbats and apartment complexes. Dingbats are two-story apartment buildings with parking tucked under the second story. They are rectangular in shape and entry to the units is from the exterior. There are also several large apartment complexes in the plan area. They are typically comprised of two-story buildings with very minimal setbacks and surface parking lots or carports along the edges. Open space takes the form of interior courtyards, often occupied by swimming pools. These buildings typically have flat roofs, steel sash windows, and minimal ornamentation. While they make no specific references to historical styles, they are not truly modern. Stylistically they are best described as Minimal Traditional because of their solid walls and punched windows. In some cases they have Googie style elements.



Figure 13: 3131 Cauby Street

Criteria: San Diego Register Criterion C

Evaluation of Individual Resources: Apartment buildings may be individually significant under Criterion C if they embody the distinctive characteristics of a style, type, period, or method of construction. These buildings will possess the character-defining features of the style they represent (see the Architectural Styles in Appendix I as well as the San Diego Modernism Historic Context Statement).

Essential Factors of Integrity: Setting, design, materials, and workmanship must be strongly present in the evaluation of integrity under Criterion C.

Commercial – Restaurants

There are numerous restaurants in the plan area. Most are located in one-story freestanding buildings surrounded by surface parking lots. While it can be said that virtually all are oriented toward customers arriving by automobile, only some were developed as drive-ins with curbside service. Restaurants constructed toward the end of the period featured drive-through windows. Regional and national restaurant chains also formed during this period and constructed outlets in the plan area including Denny's and IHOP. The designs of such buildings are usually based on prototypes that can be found throughout the country.



Figure 14: 3335 Midway Drive

Criteria: San Diego Register Criterion C

Evaluation of Individual Resources: Restaurants may be individually significant under Criterion C if they embody the distinctive characteristics of a style, type, period, or method of construction. These buildings will possess the character-defining features of the style they represent (see the Architectural Styles in Appendix I as well as the San Diego Modernism Historic Context Statement).

Essential Factors of Integrity: Setting, design, materials, and workmanship must be strongly present in the evaluation of integrity under Criterion C. Signage may have changed unless it was an integral component of the architecture.

Commercial – Retail Stores

Popular from the 1930s through the 1970s, the stand-alone retail building is noted for its accommodation of the automobile. These detached single-use buildings feature a dedicated surface parking lot on one or more sides. They may or may not share a common front setback with neighboring commercial buildings. These buildings can take various forms and styles. They typically have flat roofs, steel sash windows or storefronts, and minimal ornamentation.

Criteria: San Diego Register Criterion C

Evaluation of Individual Resources: Retail stores may be individually significant under Criterion C if they embody the distinctive characteristics of a style, type, period, or method of construction. These buildings will possess the character-defining features of the style they represent (see the Architectural Styles in Appendix I as well as the San Diego Modernism Historic Context Statement).

Essential Factors of Integrity: Setting, design, materials, and workmanship must be strongly present in the evaluation of integrity under Criterion C. Signage may have changed unless it was an integral component of the architecture.

Commercial – Motels



Figure 15: Twin Palms Motor Hotel, 4430 Pacific Highway

The motel developed as a property type in the 1920s as a hybrid between auto camps and conventional hotels. The combination of easy access to rooms and to the highway, reasonable prices, and privacy caught on in the lodging industry. The earliest motels in the plan area were one-story buildings organized in rows or U-shapes. Customers parked directly in front of their units. Constructed in 1948, the Twin Palms Motor Hotel is representative of this type in its early form. As the type evolved, it grew in size. Motels constructed in the 1960s are typically two-story buildings. Units are still accessed from the exterior, but parking could be on the rear or sides of the building.

Criteria: San Diego Register Criterion C

Evaluation of Individual Resources: Retain stores may be individually significant under Criterion C if they embody the distinctive characteristics of a style, type, period, or method of construction. These buildings will possess the character-defining features of the style they represent (see the Architectural Styles in Appendix I as well as the San Diego Modernism Historic Context Statement).

Essential Factors of Integrity: Setting, design, materials, and workmanship must be strongly present in the evaluation of integrity under Criterion C. Signage may have changed unless it was an integral component of the architecture.

Survey Results

The survey focused on built resources within the Midway - Pacific Highway Community Plan Area constructed before 1970 that have not been previously identified or designated as historic resources. Based on these criteria, the project team recorded a total of 228 properties. Information, such as physical characteristics, alterations, and integrity level, was entered in the City's Access database. Additionally, each surveyed property was evaluated using the City's local designation criteria and assigned a California Historical Resource Status Code.

Previously Identified Resources

To inform the context statement, the project team compiled a list of previously identified resources. In addition to the Access database, the City gave the project team a list of properties designated by the San Diego Historical Resources Board. Based on these two sources, as well as independent research in state and national databases, the project team concluded that the survey area contains four properties that were identified and designated as historic resources before the start of this project. It should be noted, however, that the Mission Brewery is designated as one Historical Resources Board Site (#232), but it includes two buildings on two parcels. The previously identified resources are grouped by type and/or location and organized by applicable status codes:

Map Key	Address	APN	HRB Site Number	Historic Name	Year Built	Status Code
A	Kenyon Street	4412902818	48	Hebrew Cemetery Site	N/A	5S1
B	Bounded by Barnett Avenue, Midway Drive, Rosecrans Street, and Sports Arena Boulevard	N/A	249	Dutch Flats/Ryan Field	N/A	5S1
C	1751 Hancock Street	451590063 451590065	232	Mission Brewery/ American Agar Co.	1913, 1918, 1925, 1930	5S1
D	1747 Hancock Street	451590030	1040	Mission Brewery Bottling Plant	1913	5S1

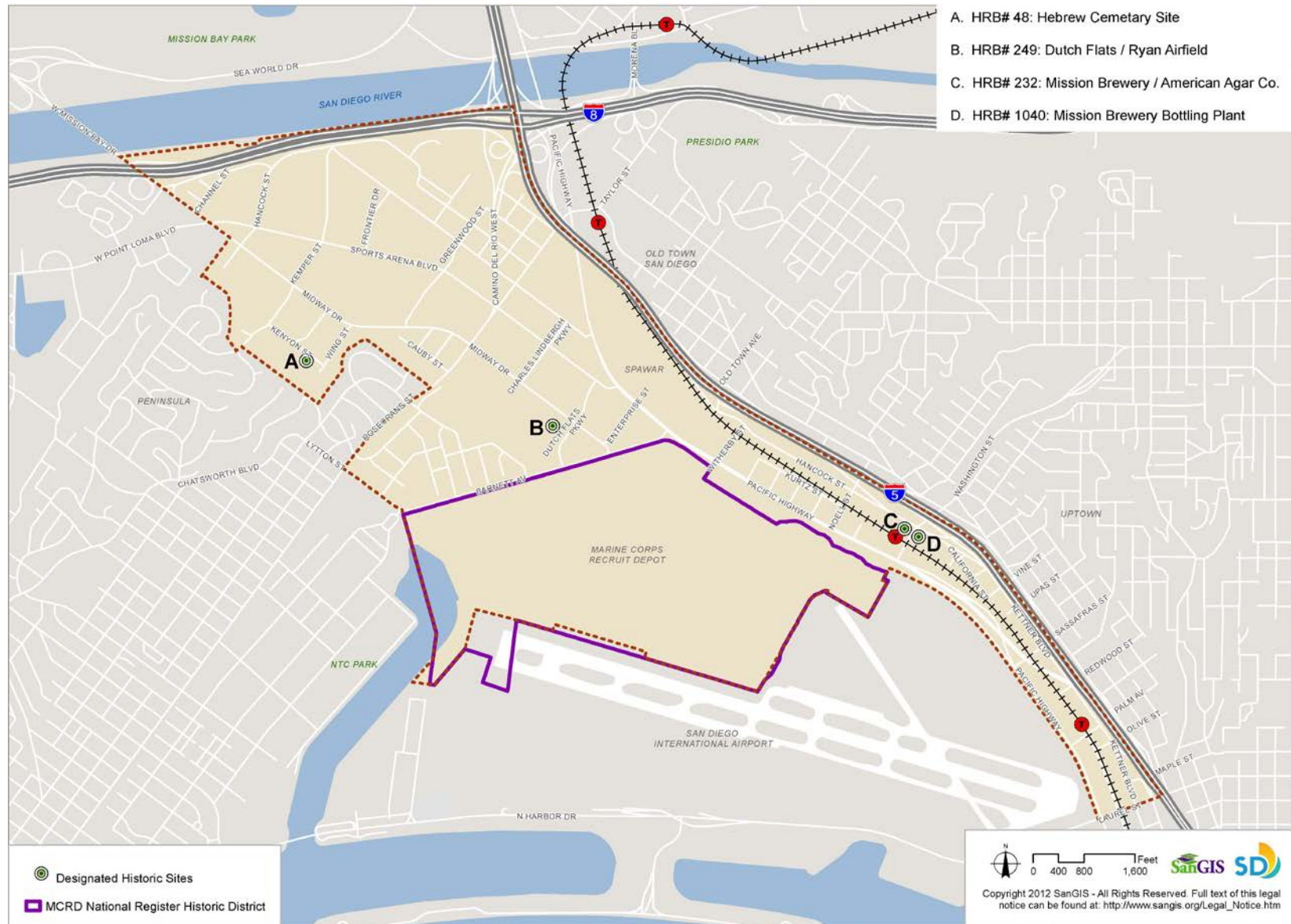


Figure 16: Map of designated historic resources.

Potential Individual Resources

The survey identified 43 potential individual resources that appear to be eligible for local listing under the City’s designation criteria. All of these meet the eligibility requirements set forth in the context statement under San Diego Criteria A and/or C.

Map Key	Address & Name ³⁰	APN	Criteria; Reason	Year Built	Status Code ³¹
1	3002 Barnett Avenue	4504500600	C; Representative example of Streamline Moderne architecture applied to a commercial building in the context of <i>Military, Aerospace and Related Industrial Development</i> .	1923	5S3
2	3030 Barnett Avenue St. Charles Borromeo Catholic Church	4504502400	C; Excellent example of late Spanish Colonial Revival architecture in the context of <i>Postwar Commercial and Residential Development</i> .	1962	5S3
3	3225 Bean Street	4516903200	Quonset hut with moderate integrity. More information required on other examples of the property type in San Diego. Should be evaluated within the contexts of <i>Military, Aerospace and Related Industrial Development</i> and <i>Postwar Commercial and Residential Development</i> .	1946	5S3
4	2802 Cadiz Street St. Charles Borromeo Preschool	4504502600	C; Excellent example of late Spanish Colonial Revival architecture in the context of <i>Postwar Commercial and Residential Development</i> .	1947	5S3
5	2802 Cadiz Street St. Charles Borromeo Academy	4504502500	C; Excellent example of late Spanish Colonial Revival architecture in the context of <i>Postwar Commercial and Residential Development</i> .	1947	5S3
6	3648 California Street	4516901100	C; Representative example of an early single-family residence in the context of <i>Transportation Improvements and Early Industrial Development</i> .	1914	5S3
7	3131 Cauby Street Loma Portal Apartments	4508021000	C; Excellent example of a Contemporary apartment complex in the context of <i>Post-war Commercial and Residential Development</i> .	1970	5S3

³⁰ The original or common name was included when known for reference, but are informal pending further study.

³¹ [The meaning of each Status Code can be found on pages 9 and 10 of this report.](#)

Map Key	Address & Name ³⁰	APN	Criteria; Reason	Year Built	Status Code ³¹
8	3202 Duke Street	4412501100	C; Representative example of a Contemporary hospital building in the context of <i>Postwar Commercial and Residential Development</i> .	1964	5S3
9	3630 Enterprise Street	4504900600	C; Representative example of a late Spanish Colonial Revival commercial building in the context of <i>Postwar Commercial and Residential Development</i> .	1948	5S3
10	1895 Hancock Street	4506411300	C; Excellent example of a commercial building with Streamline Moderne influences in the context of <i>Postwar Commercial and Residential Development</i> .	1947	5S3
11	1929 Hancock Street	4506411200	C; Excellent example of a Contemporary commercial building constructed of brick in the context of <i>Postwar Commercial and Residential Development</i> .	1950	5S3
12	3235 Hancock Street	4415700700	C; Representative example of a Contemporary commercial building in the context of <i>Postwar Commercial and Residential Development</i> .	1953	5S3
13	3430 Hancock Street	4415811400	C; Representative example of a Contemporary industrial building in the context of <i>Postwar Commercial and Residential Development</i> .	1961	5S3
14	3132 Jefferson Street	4415500300	C; Representative example of an International style commercial building in the context of <i>Postwar Commercial and Residential Development</i> .	1945	5S3
15	3211 Jefferson Street	4415500700	C; Representative example of a Contemporary commercial building in the context of <i>Postwar Commercial and Residential Development</i> .	1941	5S3
16	3320 Kemper Street	4412703200	C; Representative example of a Contemporary commercial building in the context of <i>Postwar Commercial and Residential Development</i> .	1968	5S3
17	2727 Kettner Boulevard	4516540200	C; Excellent example of a Contemporary commercial building in the context of <i>Postwar Commercial and Residential Development</i> .	1965	5S3
18	2750 Kettner Boulevard	4516530500	C; Excellent example of a Contemporary industrial building in the context of <i>Postwar Commercial and Residential Development</i> .	1959	5S3

Map Key	Address & Name ³⁰	APN	Criteria; Reason	Year Built	Status Code ³¹
19	2075 Kurtz Street	4506010200	C; Representative example of an International style commercial building in the context of <i>Postwar Commercial and Residential Development</i> .	1946	5S3
20	2790 Kurtz Street	4415602200	C; Representative example of an industrial building in the International style with good integrity in the context of <i>Post-war Commercial and Residential Development</i> .	1948	5S3
21	3467 Kurtz Street	4413301100	C; Excellent example of an International Style commercial building in the context of <i>Post-war Commercial and Residential Development</i> .	1952	5S3
22	2810 Lytton Street	4504120800	C; Rare surviving example of a Custom Ranch style commercial building in the context of <i>Postwar Commercial and Residential Development</i> .	1954	5S3
23	2820 Midway Drive	4416200500	C; Representative example of a Modern commercial block building with high integrity in the context of <i>Postwar Commercial and Residential Development</i> .	C.1958	5S3
24	2850 Midway Drive	4416200400	C; Representative example of a Contemporary commercial building with high integrity in the context of <i>Postwar Commercial and Residential Development</i> .	1945	5S3
25	3233 Midway Drive	4508010300	Older residence with good integrity on rear of lot. Need to establish the original date of construction and name of the original owner. Evaluate within appropriate context based upon date of construction.	C. 1925	5S3
26	3310 Midway Drive	4416502400	Older residence with good integrity on rear of lot. Need to establish the original date of construction and name of the original owner. Evaluate within appropriate context based upon date of construction.	C. 1915	5S3
27	3311 Midway Drive	4508010100	Older residence with fair integrity. Need to confirm the original date of construction and determine the name of the original owner. Evaluate within appropriate context based upon date of construction.	1930	5S3

Map Key	Address & Name ³⁰	APN	Criteria; Reason	Year Built	Status Code ³¹
28	3323 Midway Drive	4413602800	C; Excellent example of a Contemporary commercial building in the context of <i>Post-war Commercial and Residential Development</i> .	1961	5S3
29	3493 Noell Street	4506321000	C; Representative example of a Streamline Moderne commercial building with high integrity in the context of <i>Military, Aerospace, and Related Industrial Development</i> .	1941	5S3
30	1215 Nutmeg Street	5330110100	Quonset hut with high integrity. More information required on other examples of the property type in San Diego. Evaluate in the context of <i>Post-war Commercial and Residential Development</i> .	1946	5S3
31	3165 Pacific Highway Consolidated Aircraft Corporation	4516010600	A; Industrial building associated with expansion of Consolidated Aircraft during WWII. Evaluate in the context of <i>Military, Aerospace, and Related Industrial Development</i> and <i>Post-war Commercial and Residential Development</i> .	1954	5S3
32	4085 Pacific Highway	4505701600	C; Representative example of a Streamline Moderne commercial building with fair integrity in the context of <i>Post-war Commercial and Residential Development</i> .	1945	5S3
33	4203 Pacific Highway Consolidated Aircraft Company	4505500800	A; Industrial building associated with the expansion of Consolidated Aircraft. Evaluate in the context of <i>Military, Aerospace, and Related Industrial Development</i> and <i>Post-war Commercial and Residential Development</i> .	C. 1955	5S3
34	4430 Pacific Highway Twin Palms Motel	4415602000	C; Rare surviving example of a motel in the context of <i>Postwar Commercial and Residential Development</i> .	C. 1945	5S3
35	1411 Palm Street	4516510300	C; Good example of an Art Deco commercial building with high integrity in the context <i>Post-war Commercial and Residential Development</i> .	1947	5S3
36	3045 Rosecrans Place	4504200100	C; Representative example of a Contemporary commercial building with high integrity in the context <i>Post-war Commercial and Residential Development</i> .	1959	5S3

Map Key	Address & Name ³⁰	APN	Criteria; Reason	Year Built	Status Code ³¹
37	3051 Rosecrans Place	4504121800	C; Excellent example of a Contemporary commercial building in the context of <i>Postwar Commercial and Residential Development</i> .	1962	5S3
38	3065 Rosecrans Place	4504121900	C; Excellent example of a Contemporary commercial building in the context of <i>Post-war Commercial and Residential Development</i> .	1961	5S3
39	3150 Rosecrans Place Loma Theater	4504200400	C; Excellent example of a Streamline Moderne movie theater in the context of <i>Post-war Commercial and Residential Development</i> .	1945	5S3
40	3251 Rosecrans Street George Dewey Elementary School	4504300700	More research required on other examples of the property type in San Diego. Evaluate in the context of <i>Military, Aerospace, and Related Industrial Development</i> .	1943	5S3
41	3822 Sherman Street	4415811600	C; Representative example of a Contemporary commercial building with high integrity in the context <i>Post-war Commercial and Residential Development</i> .	1964	5S3
42	3500 Sports Arena Blvd. San Diego International Sports Arena	4415900400	A; Sports Arena appears eligible in the context of <i>Post-war Commercial and Residential Development</i> .	1966	5S3
43	3642 Sports Arena Blvd. Walter Anderson Nursery	4504900800	More research required on other examples of the property type in San Diego. Evaluate in the context of <i>Post-war Commercial and Residential Development</i> .	C. 1955	5S3

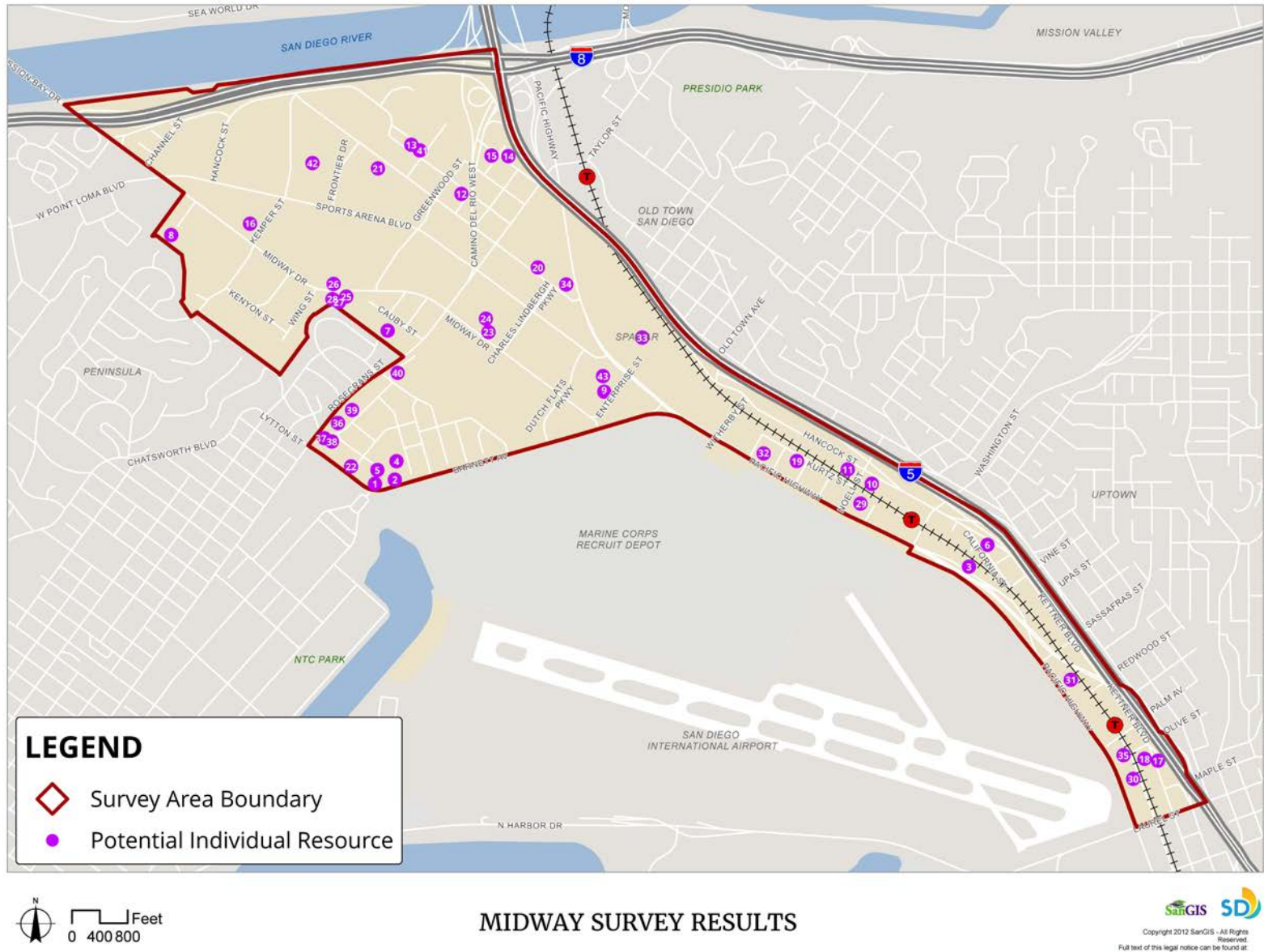


Figure 17: Map of survey results. Source: City of San Diego

Representative Photographs:



3131 Cauby Street



2727 Kettner Boulevard



3065 Rosecrans Street



2810 Lytton Street



3135 Rosecrans Place



3500 Sports Arena Boulevard



3233 Midway Drive



3310 Midway Drive



1215 Nutmeg Street



3225 Bean Street



3251 Rosecrans Street



3642 Sports Arena Boulevard

Recommendations

The following recommendations are for the ongoing identification, evaluation, and designation of historic resources within the Midway - Pacific Highway Community Plan Area and for the revision of the applicable sections of the community plan. They are based on standard preservation practice and guidelines as outlined by the National Park Service, the State Office of Historic Preservation, and the National Trust for Historic Preservation. They are also consistent with the Historic Preservation Element in the City of San Diego General Plan.

Individually Significant Properties

The survey identified several potential individually significant properties. It is recommended that these properties be surveyed at the intensive level to determine whether or not these buildings are eligible for designation.

Properties with Social or Cultural Significance

Properties in this survey have been identified primarily as either representative of significant patterns of development in plan area or for their architectural merit (as an excellent example of a building type or architectural style). There may be additional properties within the plan area which possess historic significance for social or cultural reasons (such as an association with members of the community to identify and evaluate such properties for potential historic significance and future designation is recommended.

Bibliography

Books and Manuscripts

Engstrand, Iris Wilson. *San Diego: California's Cornerstone*. San Diego, California: Sunbelt Publications, 2005.

Joyce, Barry Alan. *A Harbor Worth Defending: A Military History of Point Loma*. San Diego, California: Cabrillo Historical Association, 1995.

Linder, Bruce. *San Diego's Navy: An Illustrated History*. Annapolis, Maryland: Naval Institute Press, 2001.

McKeever, Michael. *A Short History of San Diego*. San Francisco, California: Lexibos, 1985.

Pourade, Richard F. *The History of San Diego: Time of the Bells*. San Diego: Union-Tribune Publishing Co., 1961.

Pourade, Richard R. *The History of San Diego: The Silver Dons*. San Diego: Union-Tribune Publishing Co., 1963.

Smythe, William E. *History of San Diego 1542-1908*. San Diego: The History Company, 1908.

Maps

Insurance Maps of San Diego California vol. 4. New York: Sanborn Company, 1940.

Insurance Maps of San Diego California vol. 4. New York: Sanborn Company, 1940 corr. 1947.

Insurance Maps of San Diego California vol. 4. New York: Sanborn Company, 1956.

Newspapers and Periodicals

"Aero Plant Crew Large," *Los Angeles Times*. March 20, 1936, p. 16.

"Auto Usurps Early Homes," *San Diego Union*. February 21, 1960, p. A15.

Bissell, Laurie. "San Diego Cemeteries: A Brief Guide," *The Journal of San Diego History*. Vol. 28, No. 4, Fall 1982.

"Building Sold by Consolidated for \$2,700,000," *Los Angeles Times*. November 26, 1952, p. A7.

"Case Firm Wins Heritage Award for Restoration," *Los Angeles Times*. June 2, 1985, p. I6.

"City Area Proposed for 1969 World Fair," *San Diego Union*. May 11, 1962, p. A21.

- “City’s Marriage with Defense Bloomed in ‘30s,” *San Diego Union Tribune*. November 22, 1992.
- “City’s Street Names Stretch All the Way into Dusty History,” *San Diego Union*. November 2, 1975, p. F1.
- “Consolidated Sale to Vultee Competed,” *Los Angeles Times*. November 29, 1941, p. 1.
- “Construction on Aircraft Plant Under Way Soon,” *Los Angeles Times*. May 5, 1935, p. D1.
- “Convair to Move Unit to New Base,” *Los Angeles Times*. February 11, 1955, p. 18.
- Covington, Donald. “Dryden, David Owen: A Builder in the Craftsman Style,” *The Journal of San Diego History*. Vol. 37, No. 1, Winter 1991.
- “Crosstown Freeway Takes Shape,” *San Diego Union*. July 15, 1959.
- Eddy, Lucinda. “War Comes to San Diego,” *The Journal of San Diego History*. Vol. 39, No. 1-2, Winter-Spring 1993.
- “Federal Project Honors Blakely, Upshur, Gearing,” *San Diego Union*. August 31, 1941.
- “Fifty Going by Plane to Dedication,” *Los Angeles Times*. October 20, 1935, p. 3.
- Filner, Bob. “Dealing with the Decline in San Diego’s Defense Industry,” *The San Diego Weekly*. Vol. 9, No. 16, January 15-21, 1992.
- “For Defense Industry, Cutbacks Bring Corporate Re-Evaluations,” *San Diego Tribune*. January 28, 1991.
- Gabrielson, Ed. “Mission Bay Aquatic Park: The History of Planning and Land Acquisitions,” *The Journal of San Diego History*. Vol. 48, No. 1, Winter 2002.
- Harrison, Donald H. “Bouquet of Roses: The Stories Behind San Diego Places Named for Louis Rose,” *The Journal of San Diego History*. Vol. 53, No. 1, 1985.
- “Historic Trail in Use Again,” *Los Angeles Times*. June 6, 1940, p. A18.
- Holle, Gena. “Transit in San Diego: ASCE Anniversary Project,” *The Journal of San Diego History*. Vol. 48, No. 1, Winter 2002.
- “Housing Project Sale Approved,” *Los Angeles Times*. November 12, 1954, p. A15.
- “Huge Plant to Rise at San Diego,” *Los Angeles Times*. April 14, 1935, p. D7.
- “Jet Use of Lindbergh Field OK’d,” *Los Angeles Times*. August 13, 1964, p. 20.

Liwag, Ernie. "Craft Beer in San Diego Society," *The Journal of San Diego History*. Vol. 53, No. 1, 2007.

"Marker Designed for Historic Old La Playa Trail," *San Diego Union*. July 9, 1933, p. 1.

May, Ronald V. "The Fort That Never Was on Ballast Point," *The Journal of San Diego History*. Vol. 31, No. 2, Spring 1985.

"Mayhem on Ice: and Major-League Basketball in the Wings," *San Diego Magazine*. 1966.

McGrew, Clarence A. "Old Rosy," *San Diego Historical Society Quarterly*. Vol. 4, No. 3, July 1958.

Middlebrook, R.P. "The High Iron to La Jolla," *San Diego Historical Society Quarterly*. Vol. 7, No. 1, January 1961.

"Midway Area Development Planned," *San Diego Union*. May 6, 1956, p. F12.

"More Women Preparing for Aircraft Engineering," *Los Angeles Times*. November 28, 1942, p. 14.

O'Connor-Ruth, Annie V. "Mercantile to Macdonald's: Commercial Strips in San Diego," *The Journal of San Diego History*. Vol. 38, No. 3, Summer 1992.

"\$1 Million Townhouse Site Covers 10 Acres," *Los Angeles Times*. June 8, 1975, p. K26.

"Opening of Side Streets Seen Between Kettner, Highway," *San Diego Union*. January 19, 1940.

Papageorge, Nan Taylor. "The Role of the San Diego River in the Development of Mission Valley," *The Journal of San Diego History*. Vol. 17, No. 2, Spring 1971.

"Plane Factory Addition Pends," *Los Angeles Times*. August 23, 1940, p. 27.

"Plane Plant to Expand," *Los Angeles Times*. February 29, 1940, p. 8.

"Plane Plants May Merge," *Los Angeles Times*. November 25, 1941, p. 1.

"Plans Told for Large Addition to Plane Plant," *Los Angeles Times*. March 29, 1936, p. F4.

"San Diego Blight Cleanup Proposed," *Los Angeles Times*. September 18, 1960, p. D12.

"San Diego County Freeway Routes OK'd," *Los Angeles Times*. April 29, 1965, p. A11.

"San Diego Gets New Air Plant," *Los Angeles Times*. June 26, 1935, p. 10.

Sheehan, Margot. "The Frontier They Want us to Forget." *San Diego's Weekly Reader*. September 10, 1992.

Shragge, Abraham J. “I Like the Cut of Your Jib’: Cultures of Accommodation Between the U.S. Navy and Citizens of San Diego California, 1900-1951,” *The Journal of San Diego History*. Vol. 48, No. 3, Summer 2002.

“Sports Arena Building Keeps Ahead of Schedule,” *San Diego Tribune*. no date.

“Sports Arena Site Approved at San Diego,” *Los Angeles Times*. January 28, 1955, p. 18.

Stern, Norton B. and William M. Kramer. “The Rose of San Diego,” *The Journal of San Diego History*. Vol. 19, No. 4, Fall 1973.

“To be Country’s Finest,” *Los Angeles Times*. March 5 1919, p. II1.

“Trail of California’s First White Man Traced,” *Los Angeles Times*. December 1, 1929, p. E1.

“U.S. Wartime Housing Vanishes,” *San Diego Tribune*. June 28, 1955.

“WPA Guidebook: Points of Interest in San Diego’s Past,” *San Diego Union-Tribune*. August 19, 1992.

Planning Documents and Landmark Applications

Brandes, Dr. Ray. *Historical Resources Inventory for Middletown Area, San Diego, California*, San Diego, California: University of San Diego, January 1981.

City of San Diego Historical Site Board Register Dutch Flats/Ryan Field, no date.

City of San Diego Historical Site Board Register Hebrew Cemetery Site, no date.

City of San Diego Historical Site Board Register Mission Brewery/American Agar Company, no date.

Council of the City of San Diego, “Historic Preservation Element” in *City of San Diego General Plan*. Resolution Number R-303473. Adopted March 10, 2008.

Council of the City of San Diego, “Appendix E, HP-1 San Diego History” in *City of San Diego General Plan*. Resolution Number R-303473. Adopted March 10, 2008.

Midway/Pacific Corridor Community Plan and Local Coastal Program Land Use Plan, San Diego, California: City of San Diego Planning Department, 2006.

San Diego Modernism Historic Context Statement, San Diego, California: City of San Diego Planning Department, 2007.

Appendix A

Architectural Style Guide

The architectural character of the Midway - Pacific Highway Community Plan Area reflects the fact that it was mostly developed after World War II. A few homesteaders constructed small houses in the plan area in the early part of the 19th century. They are not concentrated in any particular area, but rather scattered about. Most can be described as vernacular turn of the century cottages or Craftsman bungalows. The Pacific Highway corridor contains some of the city's oldest industrial areas including multi-use warehouses and light manufacturing buildings. More often than not, these buildings are purely functional and utilitarian in design. But in some cases they were clothed in the popular styles of the day ranging from Mission Revival to Streamline Moderne. The Midway area consists mostly of post-war commercial and some institutional and multi-family residential buildings. While most can be generally described as Contemporary, a few examples International Style and Googie/Futurists can also be found.

The styles discussed below are those currently represented among the potential historic resources identified in the plan area³². These include those styles that are prevalent in this area, or are represented by prominent examples. This typology does not establish historic significance.³³ Rather, it describes the existing population of buildings constructed prior to 1980 in this portion of the city, and serves as a guide to assist in the identification and evaluation of resources within the community. The primary and secondary character defining features listed for each style are intended to aid in the identification of style, but not all buildings will exhibit all features. This style guide should be used in conjunction with other adopted to City Contexts, such as the San Diego Modernism Historic Context Statement, when evaluating resource types.

³² Expression of architectural styles and building typologies are generally similar throughout the City, but can vary slightly based upon the unique history and circumstances of each area. Please also refer to any City-wide contexts or guides – such as the Modernism Historic Context Statement - for further information.

³³ Please refer to National, State and Local designation criteria guidelines for further assistance in establishing historic and architectural significance.

Spanish Colonial Revival

Enormously popular in Southern California from the late 1910s through the late 1930s, the Spanish Colonial Revival style emerged from a conscious effort by architects to emulate older Spanish architectural traditions, and break with Eastern colonial influences. The style attained widespread popularity throughout Southern California following the 1915 Panama-California Exposition in San Diego, designed by chief architect Bertram Grosvenor Goodhue. At the peak of its popularity, design features of other regions of the Mediterranean were often creatively incorporated, including those of Italy, France, and North Africa.

The style was applied to a broad range of property types including commercial, residential, and institutional. Red clay tile roofs or flat roofs rimed by parapets trimmed in red clay tile and stucco exterior cladding are the most common features. Because of the extensive vocabulary of the style, designs could be endlessly varied.

Character-Defining Features

Primary

- Horizontal massing and emphasis
- Flat, gabled, or hipped roofs with red clay tiles
- Smooth or textured stucco exteriors
- Asymmetrical facades

Secondary

- Wood-framed casement or double-hung windows, typically with divided lites
- Arched colonnades, window or door openings
- Decorative grilles of wood, wrought iron, or plaster
- Decorative terra cotta or tile work
- More elaborate versions may display balconies, patios, or towers



3630 Enterprise Avenue

Craftsman

The Craftsman style of architecture grew out of the late 19th century English Arts and Crafts movement. It reflected a conscious search for the supposed simplicity of a pre-industrial time when objects revealed the skill and craftsmanship of the laborer; and further, a rejection of the highly ornamental Victorian era aesthetic. The Craftsman style was most commonly applied to domestic architecture and ranged from custom-designed two-story houses to modest bungalows that were mass-produced. Craftsman style houses are characterized by their glorification of natural materials and promotion of outdoor living with a typically generous front porch. Custom-designed houses in San Diego often featured workmanship and design of high quality and represent the Craftsman style at its peak of expression. Although the bungalow has been closely associated with the Arts and Crafts movement and the Craftsman style of architecture, it refers to a type of house rather than a style of architecture.

The Craftsman bungalow became the dominant residential style in Southern California during the first two decades of the 20th century. Craftsman bungalows generally have shingled exteriors and broad front porches supported by stone, clinker brick, or stuccoed piers. Other character-defining features include low-pitched gabled roofs with wide overhanging eaves and exposed rafter tails.

Character-Defining Features

Primary

- One to two stories in height
- Building forms that respond to the site
- Low-pitched gabled roofs
- Shingled exteriors, occasionally clapboard or stucco
- Partial or full-width front porches



3310 Midway Drive

Secondary

- Overhanging eaves with exposed rafters, beams, or braces
- Stout porch piers, often of river rock or masonry
- Wood-framed windows, often grouped in multiples
- Widely proportioned front doors



3311 Midway Drive

Streamline Moderne

Influenced by the Cubism and Modern movements in Europe, Moderne structures were characteristically smooth walled and asymmetrical, with little unnecessary ornamentation and simple aerodynamic curves of concrete, plaster, and glass block. The popularization of this new modern style was reinforced by the government during the Depression as government funded New Deal projects such as the 1936-38 San Diego Civic Center (now the County Administration Center) adopted the style as the embodiment of government efficiency. This new Streamline style was a stark contrast to the lavishly ornamented Art Deco and Period Revival buildings of the pre-Depression years, which had come to represent government waste and excess. Examples of the Streamline Moderne style can be found on almost every building type including commercial, multi-family residential apartments, and some single-family residences.

Character-Defining Features

Primary

- Horizontal massing and emphasis
- Flat roofs with coping or flat parapets
- Smooth stucco or concrete exteriors
- Asymmetrical façades

Secondary

- Horizontal accents, or “speedlines”, and restrained detailing
- Curved building corners, railings, overhangs, and coping with horizontal projections above doorways and at cornice lines
- Steel sash windows
- Corner windows
- Glass block accents
- Round “porthole” windows and nautical theme



3493 Noell Street



1895 Hancock Avenue

Minimal Traditional

Minimal Traditional style buildings reflect traditional architectural forms and eclectic styles, but generally display simpler and less extensive decorative architectural detailing of the previous Period Revival styles. Minimal Traditional houses are usually modest in scale with one level, although there are some two-story examples. Common decorative features include smaller, simple front porches, chimneys, and low pitch, shallow eave roofs. Pre-war examples reference Moderne and older styles, and usually have a detached garage. Post-war examples often integrate the garage and reflect the emerging Contemporary trends. Though sometimes employing brick or stone materials, this was the first style to typically delete these expensive treatments from the side and rear façades, reflecting the frugal times.

This style is most prevalent in residential construction, but is also common in small-scale commercial, retail, and office uses. Minimal Traditional style houses are usually clustered together, especially in 1940's residential neighborhoods, although they can also be found separately as later infill in previously developed neighborhoods of Craftsman bungalows and earlier styles.

Character-Defining Features

Primary

- Compact size, usually one story in height
- Simple floor plans with minimal corners
- Low-pitched gabled or hipped roofs with shallow overhanging eaves
- Traditional building materials (wood siding, stucco, brick, and stone) emphasizing the street façade

Secondary

- Small front porches
- Simplified details of limited extent, reflecting traditional or Moderne themes
- Modestly sized wood-framed windows, occasionally one large picture window
- Detached or attached front-facing garages, frequently set back from the house



4432 Pacific Highway

International Style

The International Style was a major worldwide architectural trend during the 1920s and 30s and reflected the formative decades of Modernism prior to World War II. Although the International Style originated in Western Europe, it transcended any national or regional identity because International Style architecture made no reference to local vernaculars or traditional building forms. The style quickly migrated to the United States as architects fled from war torn Europe. In Los Angeles, immigrant architects Rudolph Schindler and Richard Neutra were instrumental in popularizing the style. The emergence of International Style architecture in San Diego came later with most examples built after 1935.

The International Style is characterized by a radical simplification of form and a complete rejection of ornament. Common features of the style include square and rectangular building footprints, simple cubic or extruded rectangular forms, horizontal bands of windows, and strong right angles. Predominant building materials include concrete, smooth stucco, brick, and, glass.

Character-Defining Features

Primary

- Single or groups of rectangular masses
- Flat roofs (cantilevered slabs or parapets)
- Exterior materials including concrete, brick, and stucco
- Lack of applied ornamentation
- Asymmetrical facades



3251 Rosecrans Street

Secondary

- Horizontal bands of flush windows
- Steel sash windows, typically casement
- Windows meeting at corners



3467 Kurtz Street

Futurist – Googie

The Futurist style of Modern architecture began after World War II as Americans became entranced with technology and the Space Age. At that time, America was also being transformed by a car culture. As automobile use increased, roadside architecture evolved. It was intended to attract the consumer with bright colors, oversized lighted signage, and exaggerated forms. In short, the building was the billboard. The Futurist style was used overwhelmingly on coffee shops, gas stations, motels, restaurants, and retail buildings. The name “Googie” comes from the well-known coffee shop in Los Angeles called Googies, which was designed by renowned Modernist architect John Lautner in 1949. Futurist architecture is also referred to as “Coffee House Modern”, “Populuxe”, “Doo-Wop”, and “Space Age”. Futurist architecture was popular throughout the 1950s and fell out of favor by the mid-60s, as America became more sophisticated in its understanding and interpretation of space travel and futurist technology.

Futurist architectural design often incorporates sharp angles, boomerang or flying saucer shapes, large expanses of glass, exposed steel structural elements, and dramatic roof overhangs. The basic form and size of Futurist buildings varies significantly from building to building. An abstract arrangement of shapes and textures is typical.

Character-Defining Features

Primary

- Abstract, angular, or curved shapes
- Expressive roof forms such as upswept, butterfly, parabolic, boomerang, or folded-plate
- Assortment of exterior materials including stucco, concrete block, brick, stone, plastic, and wood siding
- Large and expansive plate glass windows

Secondary

- Bright colors
- Screen block and shadow block accents
- Thematic ornamentation including Polynesian and Space Age motifs
- Prominent signage (neon or lighted)



3045 Rosecrans Place

Custom Ranch

Custom Ranch construction is differentiated from Tract Ranch because these homes were typically custom-designed with a specific client in mind. Designers of these custom homes include such noted San Diego designers as Cliff May, Richard Wheeler, CJ Paderewski, and Weir Brothers Construction. Cliff May was instrumental in popularizing the Ranch style in California with his book and articles published by *Sunset Magazine*. The Ranch style became the post-war era's most prevalent type of residential construction in San Diego. Custom Ranch houses are generally much more lavish than their tract counterparts; they frequently included a large landscaped property, with a deep street setback creating a generous front yard. These homes may also feature larger garages, motor courts, servant's quarters, expanded kitchens, and generous living spaces. Like Tract Ranch housing, materials and detailing are generally traditional. Typical exterior materials include wood siding, stone, concrete block, brick, and even adobe. Detailing may include paneled wood doors, divided lite windows, wood shutters, and prominent chimneys.

Character-Defining Features

Primary

- Usually one story in height
- Horizontal massing, wide to the street
- Prominent low-pitched gabled or hipped roofs with wide overhanging eaves
- Expensive building materials (wood shingle roofing, wood siding, brick, stone, and adobe), more generous in materials and craftsmanship than tract homes

Secondary

- Custom details (wood shutters, large wood windows, or large prominent brick or stone chimneys)
- Sprawling floor plan frequently "L" or "U" shaped around a central courtyard
- Large attached carports or garages



3821 Sports Arena Boulevard

Contemporary

Contemporary tract houses represented a growing sophistication of the residential homebuyer and an increasing public demand for housing that reflected the latest styles. They employed modern features such as interior courtyards, aluminum-framed windows, sliding-glass doors, and attached carports or garages; and flexible plans, allowing the homebuyer to customize their properties.

In addition to its use as a style for tract housing, the Contemporary style was ubiquitous in San Diego during the 1950s and 1960s for commercial buildings. These buildings display many of the same design features as Contemporary style homes, such as angular massing, varied materials, and unusual roof forms, especially on freestanding commercial buildings. Signage for street front commercial buildings in the Contemporary style was generally large, with bold freestanding letters attached to façades that were frequently lighted in order to attract passing motorists. For Contemporary buildings with private parking lots such as grocery stores, signage was frequently taller and rose above the building itself, serving as a beacon in large parking areas.

Character-Defining Features

Primary

- Horizontal, angular massing
- Strong roof forms including flat, gabled, shed, or butterfly, typically with wide overhanging eaves
- Non-traditional exterior finishes including vertical wood siding, concrete block, stucco, flagstone, and mullion-free glass



3065 Rosecrans Place

Secondary

- Large windows, often steel or aluminum
- Sun shades, screens, or shadow block accents
- Distinctive triangular, parabolic, or arched forms
- “Eyebrow” overhangs on commercial buildings
- Integrated, stylized signage on commercial buildings



3323 Midway Drive

Appendix B

Table of All Surveyed Properties³⁴:

NUM	STREET	SUFFIX	APN	YEAR BUILT	STATUS CODE ³⁵
1747	HANCOCK	ST	4515903000	1913	5S1
2741	MENDONCA	DR	4504600500		5S1
2120	WASHINGTON	ST	4515906300	1913	5S1
3002	BARNETT	AV	4504500600	1923	5S3
3030	BARNETT	AV	4504502400	1962	5S3
3225	BEAN	ST	4516903200	1946	5S3
2802	CADIZ	ST	4504502600	1947	5S3
2802	CADIZ	ST	4504502500	1947	5S3
3648	CALIFORNIA	ST	4516901100	1914	5S3
3131	CAUBY	ST	4508021000	1970	5S3
3202	DUKE	ST	4412501100	1964	5S3
3630	ENTERPRISE	ST	4504900600	1948	5S3
1895	HANCOCK	ST	4506411300	1947	5S3
1929	HANCOCK	ST	4506411200	1950	5S3
3235	HANCOCK	ST	4415700700	1953	5S3
3430	HANCOCK	ST	4415811400	1961	5S3
3132	JEFFERSON	ST	4415500300	1945	5S3
3211	JEFFERSON	ST	4415500700	1941	5S3
3320	KEMPER	ST	4412703200	1968	5S3
2727	KETTNER	BL	4516540200	1965	5S3
2750	KETTNER	BL	4516530500	1959	5S3
2075	KURTZ	ST	4506010200	1946	5S3
2790	KURTZ	ST	4415602200	1948	5S3
3467	KURTZ	ST	4413301100	1952	5S3
2810	LYTTON	ST	4504120800	1954	5S3
2820	MIDWAY	DR	4416200500	c.1958	5S3
2850	MIDWAY	DR	4416200400	1945	5S3
3233	MIDWAY	DR	4508010300	c.1925	5S3
3310	MIDWAY	DR	4416502400	c.1915	5S3
3311	MIDWAY	DR	4508010100	1930	5S3
3323	MIDWAY	DR	4413602800	1964	5S3
3493	NOELL	ST	4506321000	1941	5S3

³⁴ Circa dates were assigned to buildings for one of the following reasons: 1.) The date in the City's database appeared to be incorrect, so surveyors assigned an estimated date; 2.) The property has multiple buildings from different periods, but only one construction date in the database. The dates were not changed in the database, because it does not allow the inclusion of "c." to indicate that it is not factual. As a result, this table does not match the database exactly.

³⁵ [For Status Code meanings, please refer to Pages 9 and 10.](#)



NUM	STREET	SUFFIX	APN	YEAR BUILT	STATUS CODE ³⁵
1215	NUTMEG	ST	5330110100	1946	5S3
3165	PACIFIC	HY	4516010600	1954	5S3
4085	PACIFIC	HY	4505701600	1945	5S3
4203	PACIFIC	HY	4505500800	1955	5S3
4430	PACIFIC	HY	4415602000	c.1945	5S3
1411	PALM	ST	4516510300	1947	5S3
3045	ROSECRANS	PL	4504200100	1959	5S3
3051	ROSECRANS	PL	4504121800	1962	5S3
3065	ROSECRANS	PL	4504121900	1961	5S3
3135	ROSECRANS	PL	4504200400	1945	5S3
3251	ROSECRANS	ST	4504300700	1943	5S3
3822	SHERMAN	ST	4415811600	1964	5S3
3500	SPORTS ARENA	BL	7602450700	1966	5S3
3642	SPORTS ARENA	BL	4504900800	c.1955	5S3
3518	BARNETT	AV	4505210200	1933	7R
3528	BARNETT	AV	4505210300	1951	7R
3610	BARNETT	AV	4505220100	1970	7R
2745	CADIZ	ST	4504501300	1952	7R
2814	CADIZ	ST	4504501900	1951	7R
2843	CADIZ	ST	4504120400	1950	7R
2905	CADIZ	ST	4504120300	1946	7R
2911	CADIZ	ST	4504120200	c.1945	7R
3704	CAM DEL RIO SOUTH		4415700100	1970	7R
3535	CAM DEL RIO WEST		4415500500	1953	7R
3720	CAM DEL RIO WEST		4415700200	1954	7R
3846	CAM DEL RIO WEST		4415700900	1961	7R
3677	CAM DEL RIO WEST		4415502600	1964	7R
3175	CAUBY	ST	4508021500	1962	7R
3388	CHANNEL	WY	4411822500	1959	7R
3431	CHANNEL	WY	4411842000	c.1960	7R
3691	COUTS	ST	4505701700	1954	7R
3535	ENTERPRISE	ST	4505210600	1947	7R
3525	ESTUDILLO	ST	4506310900	1941	7R
3250	FORDHAM	ST	4412900300	1956	7R
3777	GAINES	ST	4415702400	1964	7R
3799	GAINES	ST	4415702300	1964	7R
3801	GAINES	ST	4415701900	1943	7R
3849	GAINES	ST	4415701300	1953	7R
3852	GAINES	ST	4415501800	c.1965	7R



NUM	STREET	SUFFIX	APN	YEAR BUILT	STATUS CODE ³⁵
3875	GAINES	ST	4415501400	1961	7R
3780	GREENWOOD	ST	4415823000	c.1959	7R
1691	HANCOCK	ST	4515903200	1954	7R
1922	HANCOCK	ST	4506411000	1966	7R
2036	HANCOCK	ST	4506120200	1925	7R
2050	HANCOCK	ST	4506112300	1968	7R
2102	HANCOCK	ST	4505831300	1968	7R
2122	HANCOCK	ST	4505830500	1964	7R
2175	HANCOCK	ST	4505840800	1950	7R
2175	HANCOCK	ST	4505840900	1949	7R
3024	HANCOCK	ST	4415701800	1965	7R
3025	HANCOCK	ST	4415702800	1955	7R
3110	HANCOCK	ST	4415702000	1964	7R
3235	HANCOCK	ST	4415703100	1953	7R
3304	HANCOCK	ST	4415812100	1961	7R
3315	HANCOCK	ST	4415821600	1960	7R
3319	HANCOCK	ST	4415821500	c.1945	7R
3322	HANCOCK	ST	4415812000	1964	7R
3341	HANCOCK	ST	4415821300	1957	7R
3351	HANCOCK	ST	4415821200	1958	7R
3366	HANCOCK	ST	4415811700	1967	7R
3375	HANCOCK	ST	4415821100	1960	7R
3403	HANCOCK	ST	4415821000	1961	7R
3417	HANCOCK	ST	4415820900	c.1945	7R
3419	HANCOCK	ST	4415820800	c.1945	7R
3420	HANCOCK	ST	4415811500	1962	7R
3425	HANCOCK	ST	4415823700	1964	7R
3452	HANCOCK	ST	4415811200	1958	7R
3455	HANCOCK	ST	4415820500	1961	7R
3459	HANCOCK	ST	4415820400	1966	7R
3460	HANCOCK	ST	4415811100	c.1963	7R
3465	HANCOCK	ST	4415820300	1961	7R
3468	HANCOCK	ST	4415811000	1963	7R
3477	HANCOCK	ST	4415820200	1961	7R
3597	HANCOCK	ST	4415304500	c.1960	7R
3647	HANCOCK	ST	4415304200	c.1950	7R
4019	HICOCK	ST	4415305900	c.1960	7R
2504	INDIA	ST	5330401100	1936	7R
2518	INDIA	ST	5330401200	1910	7R



NUM	STREET	SUFFIX	APN	YEAR BUILT	STATUS CODE ³⁵
2528	INDIA	ST	5330401300	1914	7R
3127	JEFFERSON	ST	4415503200	1965	7R
3133	KEMPER	ST	4507520700	1962	7R
3152	KEMPER	ST	4507510800	1963	7R
3155	KEMPER	ST	4507520300	1961	7R
3181	KEMPER	ST	4507520500	1961	7R
3191	KEMPER	ST	4507520600	1961	7R
3350	KEMPER	ST	4412706100	1969	7R
3622	KEMPER	CT	4507511900	1965	7R
3622	KEMPER	CT	4507510500	1964	7R
2501	KETTNER	BL	5330401000	1948	7R
2555	KETTNER	BL	5330400700	1940	7R
2559	KETTNER	BL	5330400600	1965	7R
2641	KETTNER	BL	5330402100	1946	7R
2814	KETTNER	BL	4516520500	c.1950	7R
3338	KETTNER	BL	4516060200	c.1955	7R
3634	KETTNER	BI	4516904500	1940	7R
2053	KURTZ	ST	4506010300	1961	7R
2065	KURTZ	ST	4506010600	c.1949	7R
2165	KURTZ	ST	4505701800	1955	7R
2750	KURTZ	ST	4415602400	1949	7R
2950	KURTZ	ST	4415600200	1965	7R
3220	KURTZ	ST	4415700500	1955	7R
3233	KURTZ	ST	4416000500	1970	7R
3280	KURTZ	ST	4415702900	1957	7R
3304	KURTZ	ST	4415823100	c.1959	7R
3320	KURTZ	ST	4415823200	c.1959	7R
3342	KURTZ	ST	4415823300	1959	7R
3356	KURTZ	ST	4415821900	1966	7R
3495	KURTZ	ST	4413300100	1964	7R
3520	KURTZ	ST	4413403100	1965	7R
3520	KURTZ	ST	4413403000	c.1965	7R
3602	KURTZ	ST	4413400502	1959	7R
3602	KURTZ	ST	4413400501	1959	7R
3608	KURTZ	ST	4413401001	1959	7R
3608	KURTZ	ST	4413401002	1959	7R
3612	KURTZ	ST	4413400302	1958	7R
3612	KURTZ	ST	4413400301	1958	7R
3620	KURTZ	ST	4413401900	1970	7R



NUM	STREET	SUFFIX	APN	YEAR BUILT	STATUS CODE ³⁵
3934	LA SALLE	ST	4411832000	1948	7R
3938	LA SALLE	ST	4411831900	1965	7R
3943	LA SALLE	ST	4411821100	c.1945	7R
3946	LA SALLE	ST	4411831400	1947	7R
4004	LA SALLE	ST	4411831500	c.1950	7R
4005	LA SALLE	ST	4411820900	1951	7R
4021	LA SALLE	ST	4411820700	1918	7R
2734	LYTTON	ST	4504500300	1960	7R
2790	LYTTON	ST	4504500100	1962	7R
2830	LYTTON	ST	4504120900	1946	7R
2844	LYTTON	ST	4504121000	1941	7R
2846	LYTTON	ST	4504121500	c. 1949	7R
2902	LYTTON	ST	4504121700	1962	7R
2918	LYTTON	ST	4504121400	1936	7R
2701	MIDWAY	DR	4504800500	1972	7R ³⁶
2720	MIDWAY	DR	4416200700	1950	7R
2740	MIDWAY	DR	4416201300	1961	7R
2790	MIDWAY	DR	4416201200	1959	7R
3038	MIDWAY	DR	4416300600	1954	7R
3048	MIDWAY	DR	4416300700	1953	7R
3164	MIDWAY	DR	4416400300	1957	7R
3196	MIDWAY	DR	4416400700	1940	7R
3225	MIDWAY	DR	4508010500	1966	7R
3305	MIDWAY	DR	4508010200	c.1940	7R
3335	MIDWAY	DR	4413602600	1970	7R
3577	MIDWAY	DR	4413000100	1968	7R
3602	MIDWAY	DR	4412702300	1967	7R
3604	MIDWAY	DR	4412701000	1955	7R
3737	MIDWAY	DR	4412502200	1959	7R
3777	MIDWAY	DR	4412502100	1970	7R
3019	MOORE	ST	4415701500	1958	7R
3112	MOORE	ST	4415501900	1947	7R
3128	MOORE	ST	4415502200	1947	7R
3146	MOORE	ST	4415503400	1949	7R
3205	MOORE	ST	4415701000	1956	7R
3206	MOORE	ST	4415502500	1964	7R
1220	OLIVE	ST	4516520400	1959	7R
3703	PACIFIC	HY	4515904300	1951	7R

³⁶ This property was reviewed by the Historical Resources Board on November 17, 2016 and was not designated.



NUM	STREET	SUFFIX	APN	YEAR BUILT	STATUS CODE ³⁵
3895	PACIFIC	HY	4506320500	1945	7R
3923	PACIFIC	HY	4506310800	1950	7R
3955	PACIFIC	HY	4506020500	1937	7R
3957	PACIFIC	HY	4506020600	1937	7R
3959	PACIFIC	HY	4506020700	1934	7R
4025	PACIFIC	HY	4506010500	1945	7R
4306	PACIFIC	HY	4505000900	1941	7R
4320	PACIFIC	HY	4505000800	1949	7R
4420	PACIFIC	HY	4415602100	1950	7R
4450	PACIFIC	HY	4415601800	1948	7R
3418	PICKETT	ST	4415810300	c.1950	7R
3424	PICKETT	ST	4415810400	1959	7R
3464	PICKETT	ST	4415812300	1959	7R
3494	PICKETT	ST	4415810700	1959	7R
3776	RILEY	ST	4415700600	1954	7R
3904	RILEY	ST	4415500400	1941	7R
3251	ROSECRANS	PL	4507400900	1945	7R
3342	ROSECRANS	ST	4508021400	c.1950	7R
3381	ROSECRANS	ST	4504703700	1964	7R
3540	ROSECRANS	ST	4416300300	1964	7R
3802	ROSECRANS	ST	4415701700	1964	7R
3820	ROSECRANS	ST	4415701600	1970	7R
3860	ROSECRANS	ST	4415501600	1953	7R
3896	ROSECRANS	ST	4415501500	1963	7R
3826	SHERMAN	ST	4415810100	1966	7R
3860	SHERMAN	ST	4415401300	1966	7R
	SHOUP	DR	4504600100	c.1945	7R
2821	SPORTS ARENA	BL	4504900700	c.1955	7R
3171	SPORTS ARENA	BL	4416301200	1961	7R
3655	SPORTS ARENA	BL	4412703000	1968	7R
3820	SPORTS ARENA	BL	4415900600	1970	7R
3821	SPORTS ARENA	BL	4412705200	1970	7R
4004	SPORTS ARENA	BL	4411810800	c.1955	7R
3027	ST CHARLES	ST	4504501200	1952	7R
3441	SUTHERLAND	ST	4515905200	1950	7R
3935	WESTERN	ST	4411831200	1947	7R
3175	WING	ST	4413602000	1970	7R
3225	WING	ST	4413601100	1970	7R
3554	KETTNER	BL	4516901700	1963	6Z