

# Mira Mesa Community Plan Update: Public Facilities, Services, & Safety

## Planning Department

Mira Mesa CPU –Advisory Committee – November 19th, 2018

6:10pm to 7:00pm – Mira Mesa Library – Alex Frost, Senior Planner





# Planning Department – Presentation Outline

## 1. Update/Recap:

- Community Atlas
- Plan Update Schedule
- Online Survey Status
- Citywide Initiative: TPA Multifamily Residential Parking Standards
- Advisory Committee Follow Up

## 2. Public Facilities Existing Conditions, Goals, and Policies

## 3. Discussion & Feedback

## Existing Conditions Report:

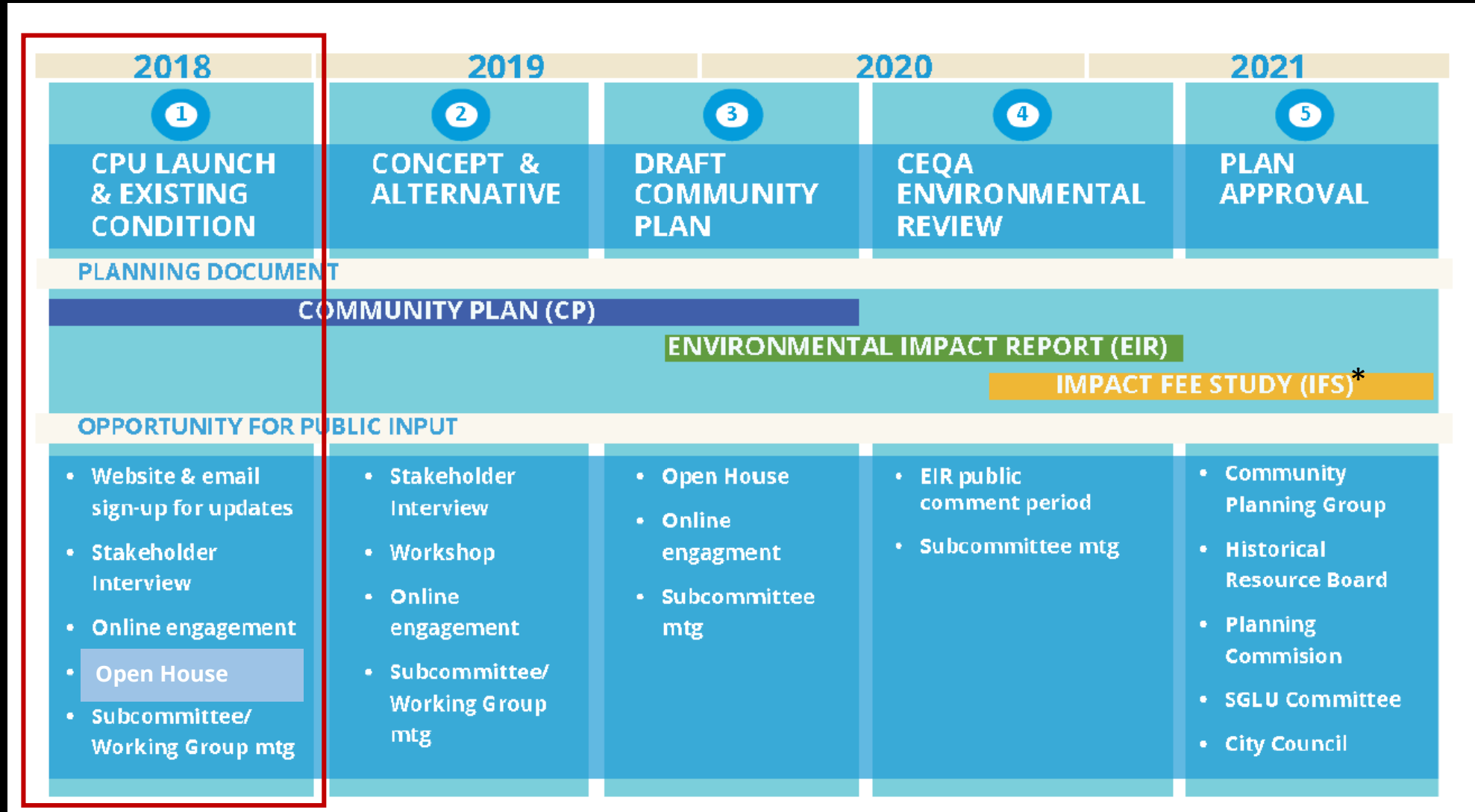
- Highlights existing conditions, opportunities & challenges (as of Sept. 2018)
- Provides maps, photos, charts, and tables about land uses, ecosystems, community form, and transportation infrastructure
- Outlines future prospects for the community
- Printed copies available to MM planning group members

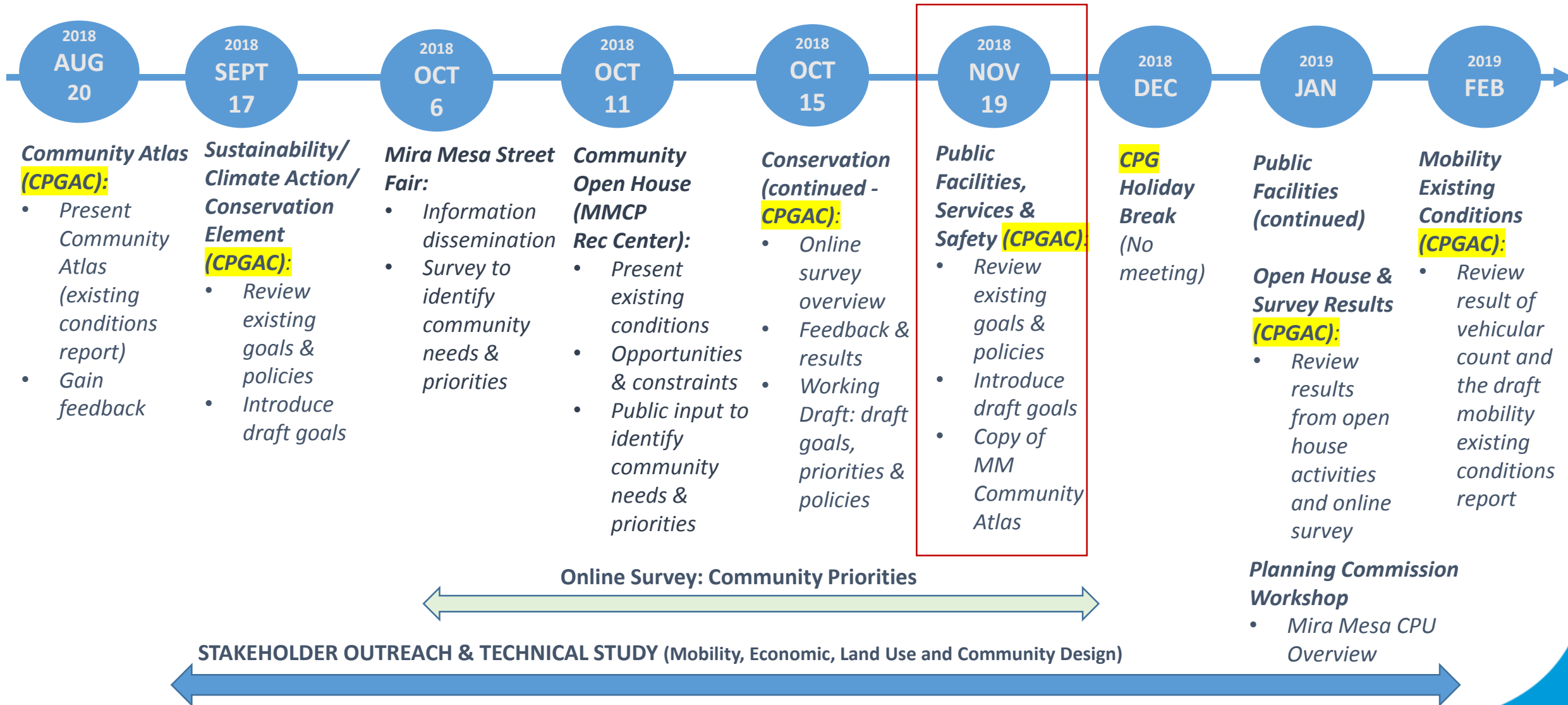


**Available @** [www.PlanMiraMesa.org](http://www.PlanMiraMesa.org)



# Process and Timeline

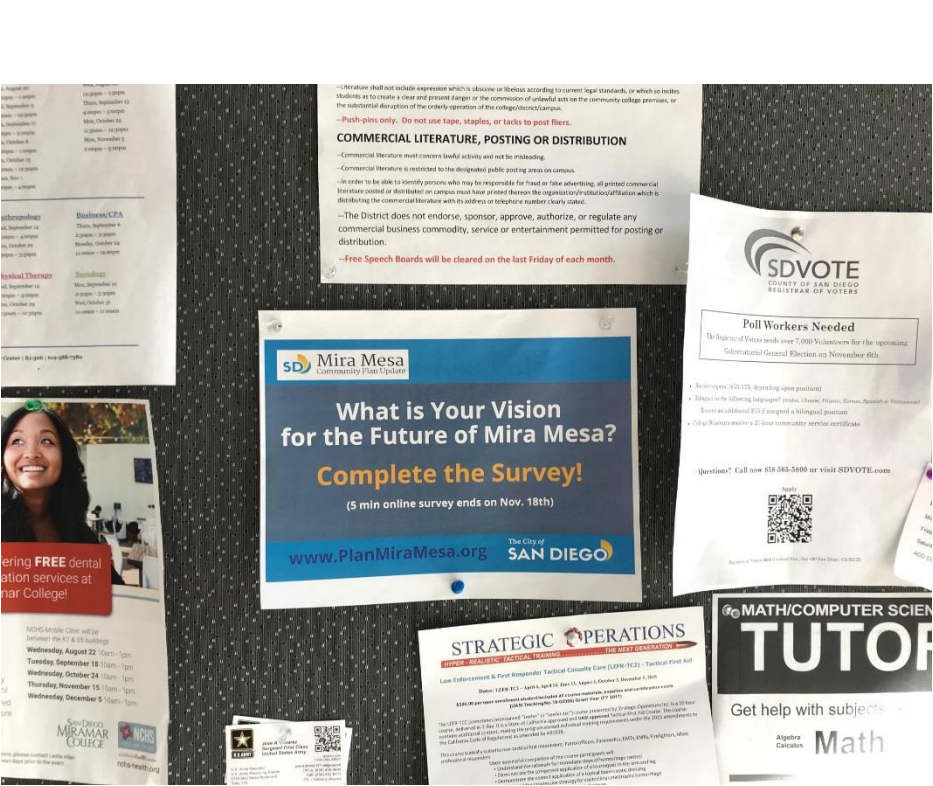








Social Media



Flyers in Community Gathering Places



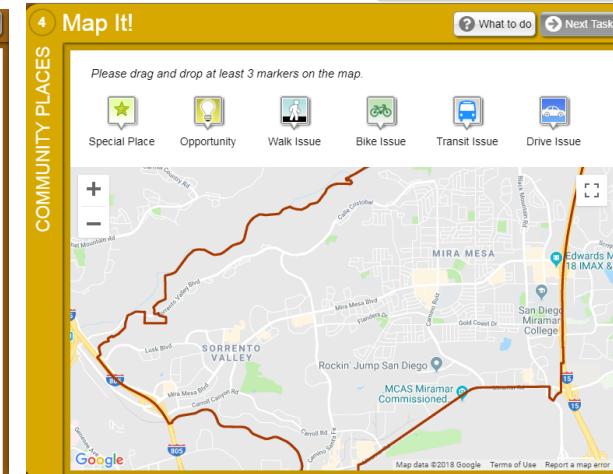
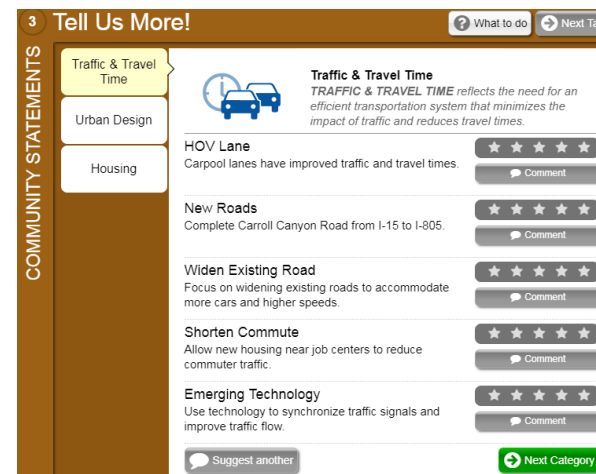
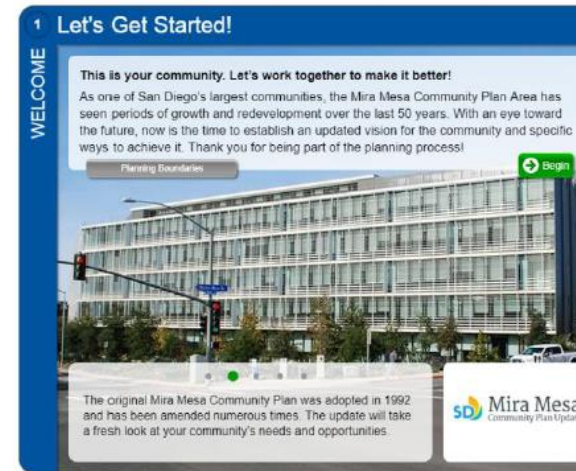
In-Person

## As of November 16, 2018:

- Participants = 697 people
- Data Points = 12,627
- Comments = 481

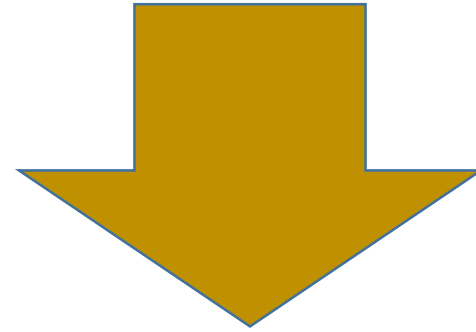
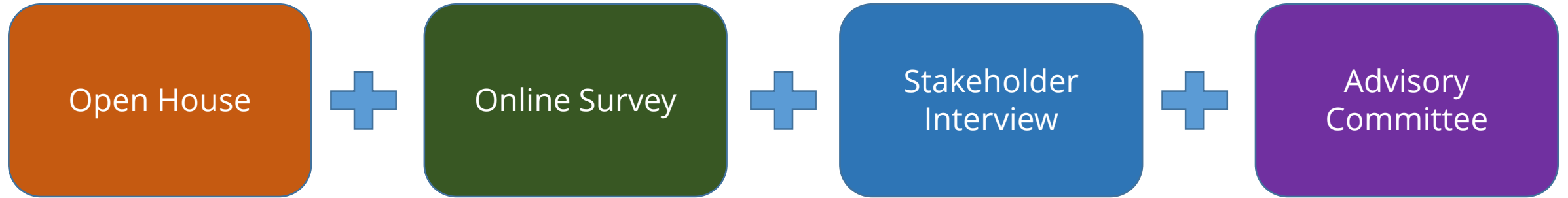
## Online survey ends on:

- **Sunday, November 25, 2018**



**Take the survey! @ [www.PlanMiraMesa.org](http://www.PlanMiraMesa.org)**

# Phase 1 - Community Engagement Result



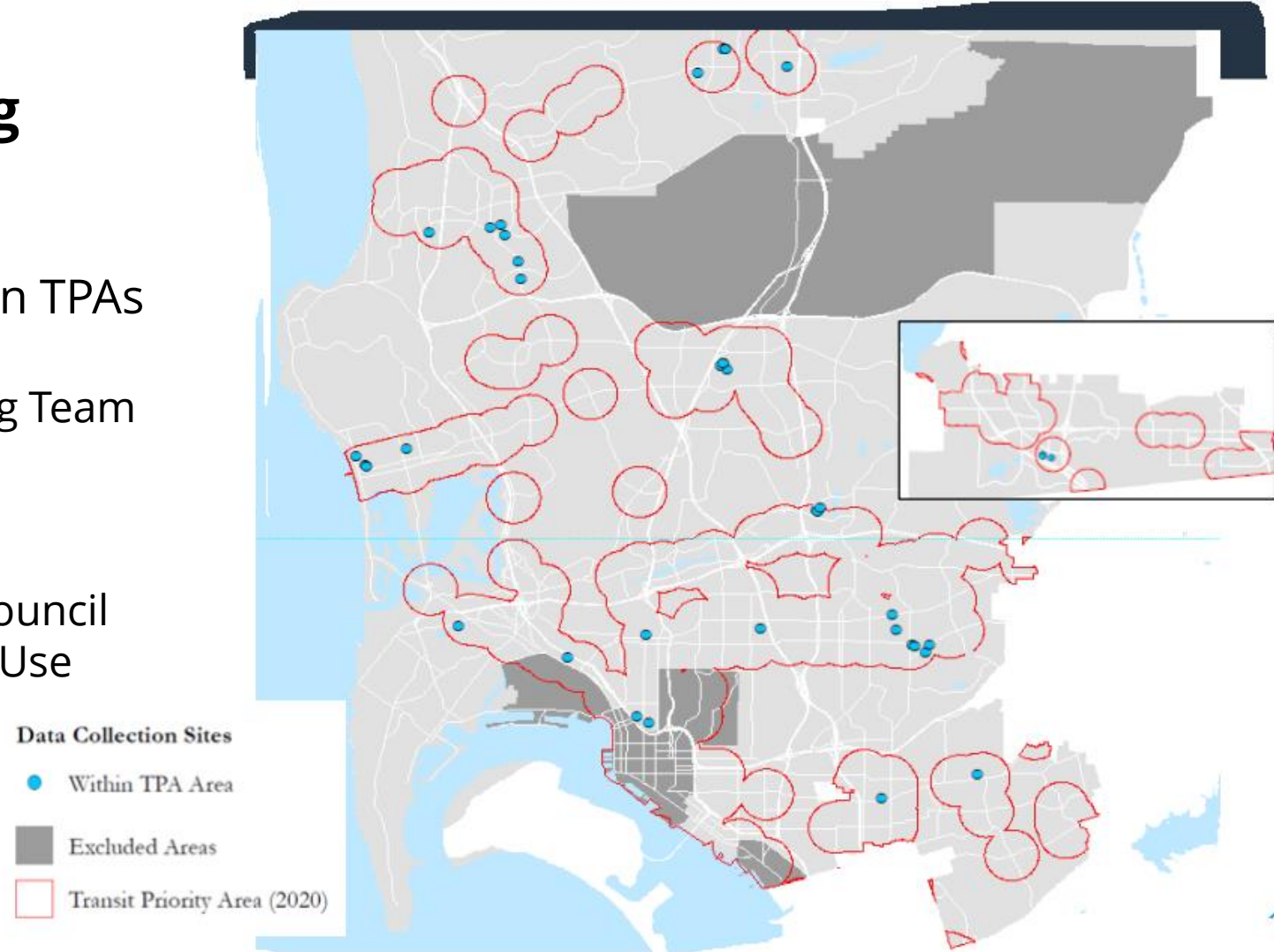
Phase 1 - Community Engagement Result

January 2019



## Transit Priority Area (TPA) Multifamily Residential Parking Standards:

- Part of Mayor's *Housing SD* Initiative
- Proposes Market-Based Parking within TPAs
- Presentations:
  - Dec. 12, 2018 – City's Code Monitoring Team & Technical Advisory Committee
  - Jan. 22, 2019 – Community Planners Committee
  - Early 2019 – Planning Commission, Council Committee on Smart Growth & Land Use
  - Spring, 2019 - City Council



**More information @** <https://www.sandiego.gov/planning/programs/transportation/mobility/tpa>.

## Rails to Trails Concept

- Requested at Sept. 17, 2018 Advisory Committee Meeting
- Incorporate “Fallow Railroad” into Open Space Goal
- Explore the ownership and feasibility

## Follow Up

- Identified Owners of Rail Road ROW - BNSF
- They want to keep existing rail tracks, but
- If no tracks within the ROW, they are open to consider a sale

## Next Step

- Survey ROW without rail road tracks to determine if the idea is worth pursuing further

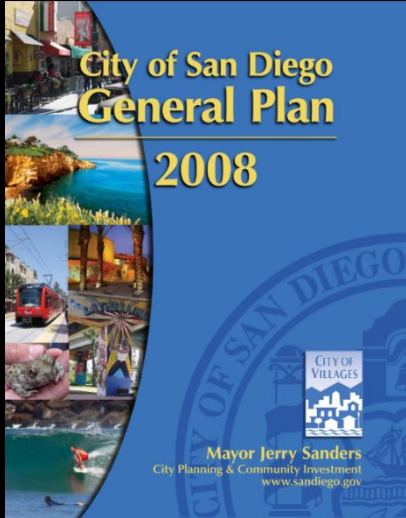




# **PUBLIC FACILITIES OVERVIEW**



# General Plan: Public Facilities, Services & Safety Element



**Purpose:**  
To provide the public facilities and services needed to serve the existing population and new growth.

Fire-Rescue

Police

Wastewater,  
Storm Water, &  
Water  
Infrastructure

Waste  
Management

Libraries

Schools

Information  
Infrastructure

Public Utilities

Regional  
Facilities

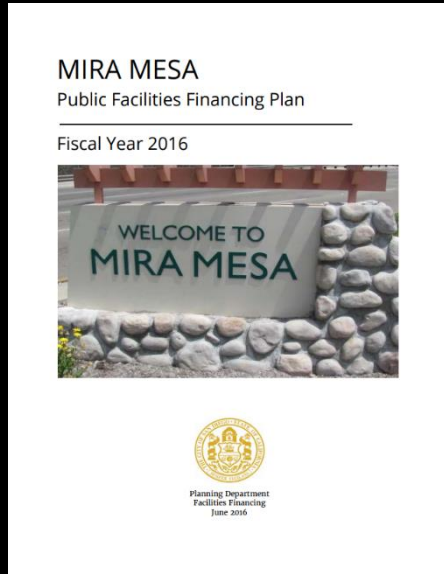
Healthcare  
Services and  
Facilities

Disaster  
Preparedness

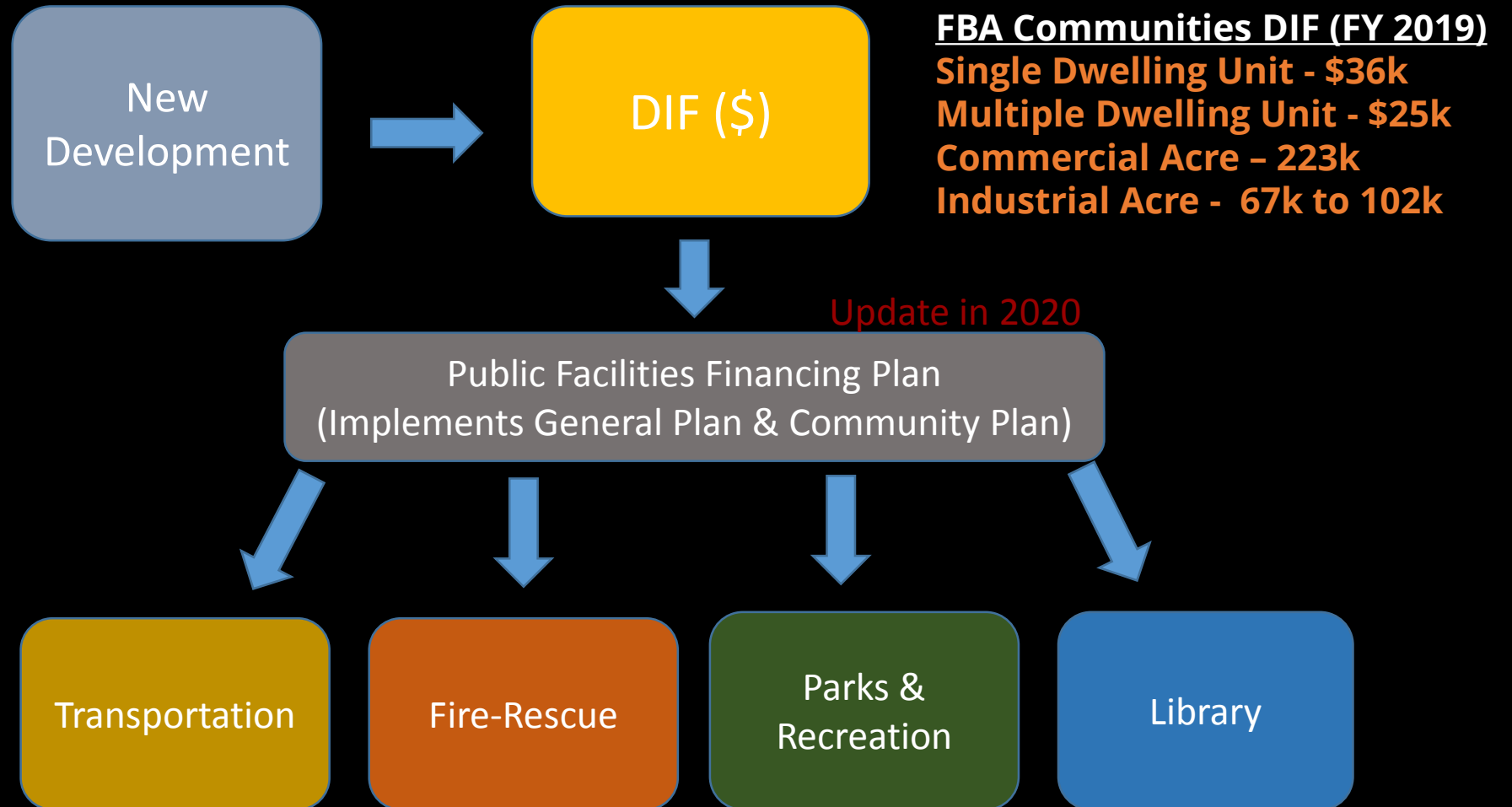
Seismic Safety



# SD Public Facilities Financing – Development Impact Fee (DIF)



**Mira Mesa CPA:**  
DIF assures timely  
development of  
public facilities  
such as fire, parks,  
recreation, library,  
and transportation

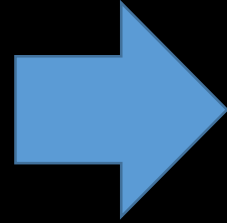




# Public Facilities Financing – Development Impact Fee (DIF) in Action

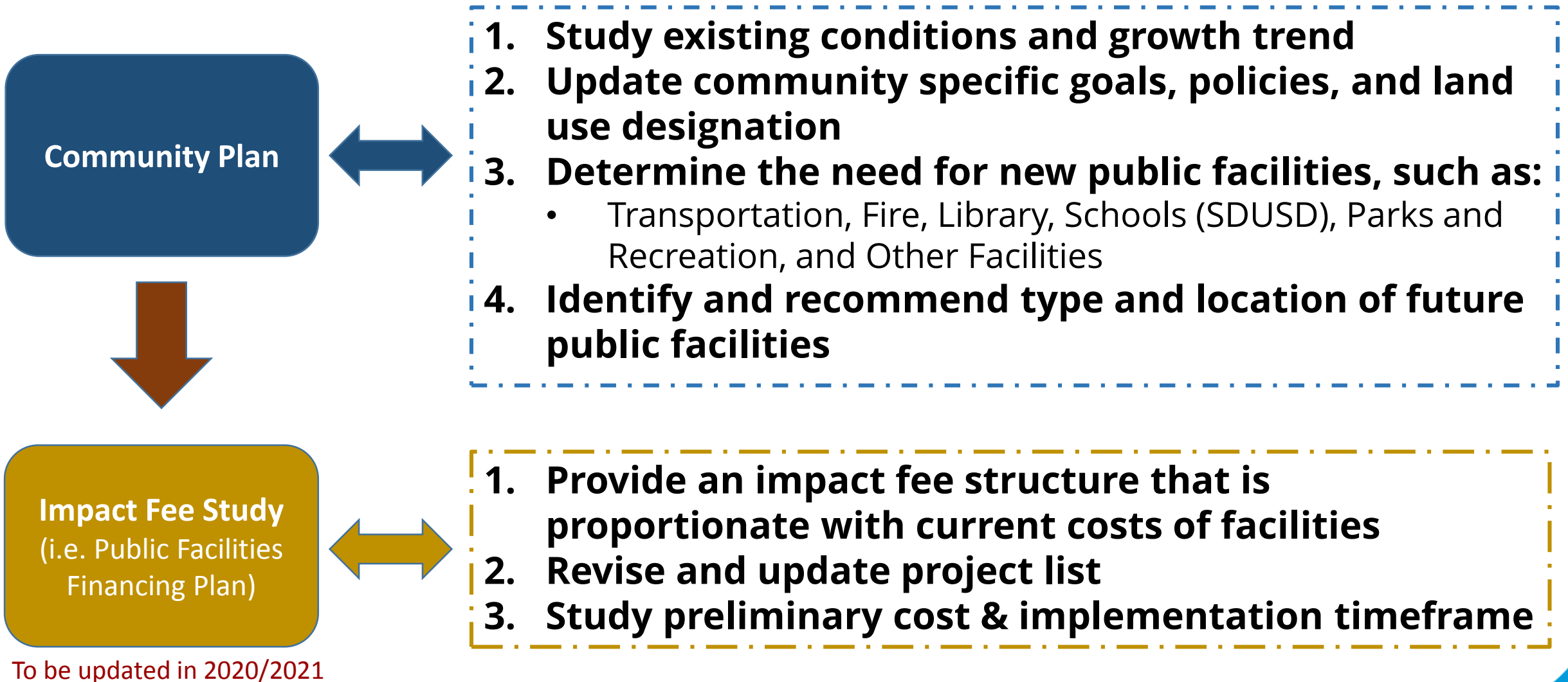


**Casa Mira View**



**Mira Mesa Community Park  
Expansion & Enhancement**







# For More Information on Public Facilities & Infrastructure

## MIRA MESA

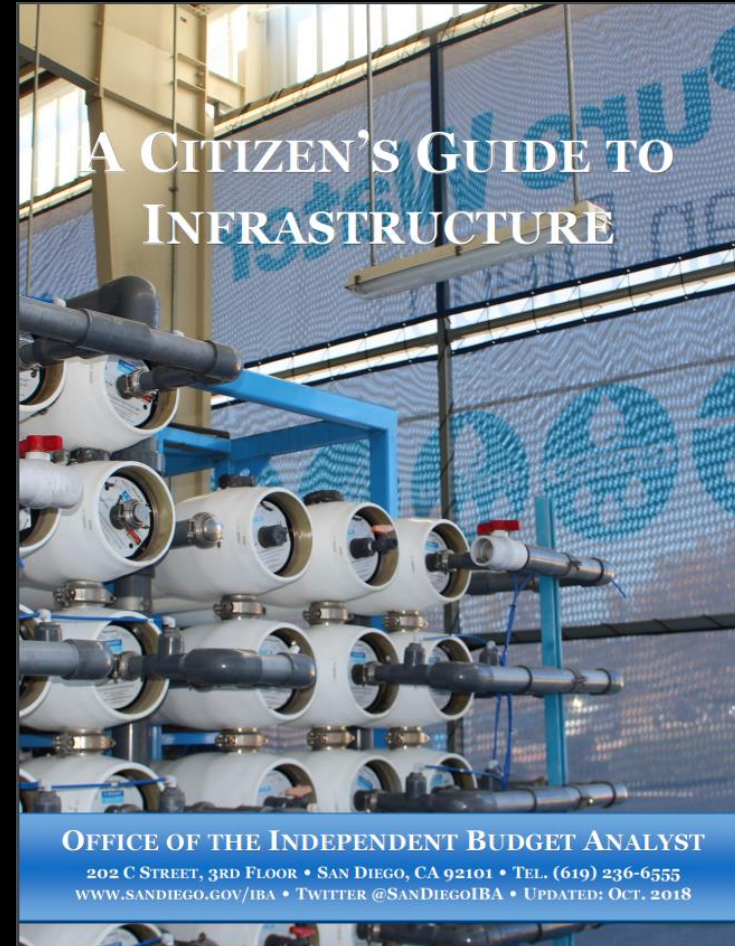
Public Facilities Financing Plan

Fiscal Year 2016



Planning Department  
Facilities Financing  
June 2016

[https://www.sandiego.gov/sites/default/files/fy\\_16\\_mm\\_pffp\\_fv\\_9-9-16\\_0.pdf](https://www.sandiego.gov/sites/default/files/fy_16_mm_pffp_fv_9-9-16_0.pdf)



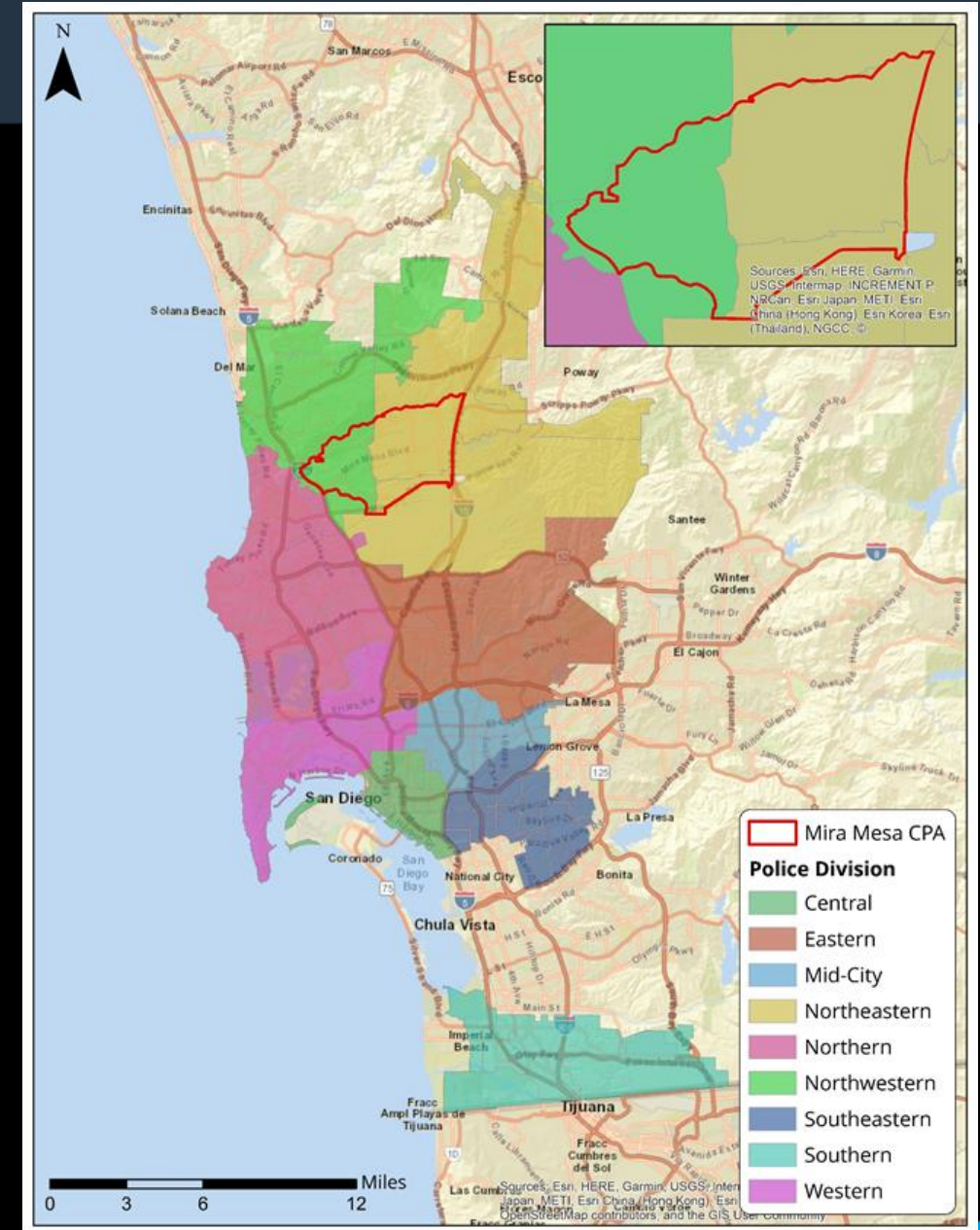
<https://www.sandiego.gov/sites/default/files/citizens-guide-to-infrastructure-fy2019.pdf>

**PUBLIC FACILITIES  
EXISTING CONDITIONS, GOALS, & POLICES  
(Please refer to the Working Draft)**



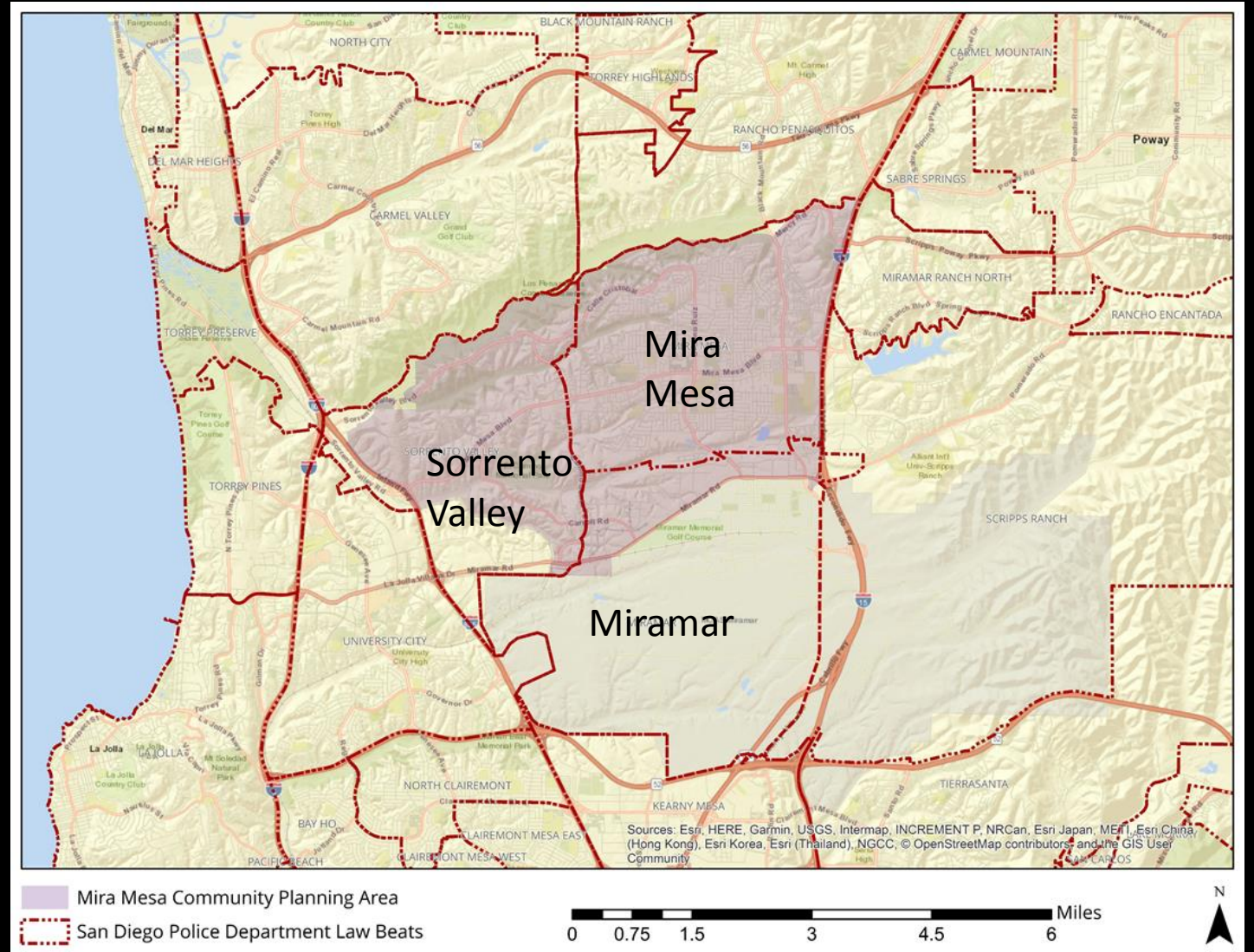
There are two police divisions serving Mira Mesa CPA:

- Northeastern Division serves:
  - A population of 234,394 people
  - Encompasses 103.8 square mile
- Northwestern Division serves:
  - A population of 70,822 people
  - Encompasses 41.6 square mile



The police department has defined neighborhood names corresponding to each police beat:

- Beats 242 - Mira Mesa
- Beat 243 - Miramar
- Beat 931 - Sorrento Valley



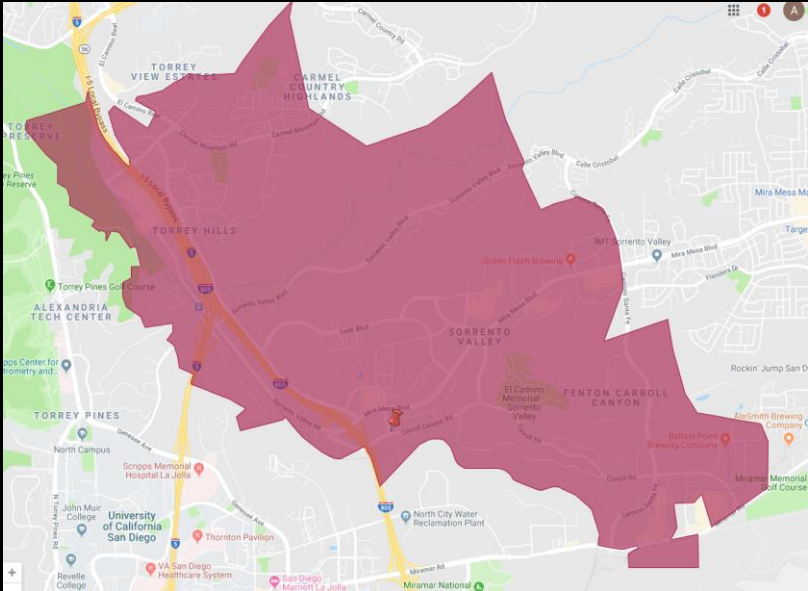


- Support a close relationship between community groups such as Neighborhood Watch and the law enforcement establishment:
- Headquarter of the Mira Mesa/Scripps Ranch Retired Senior Volunteer Patrol





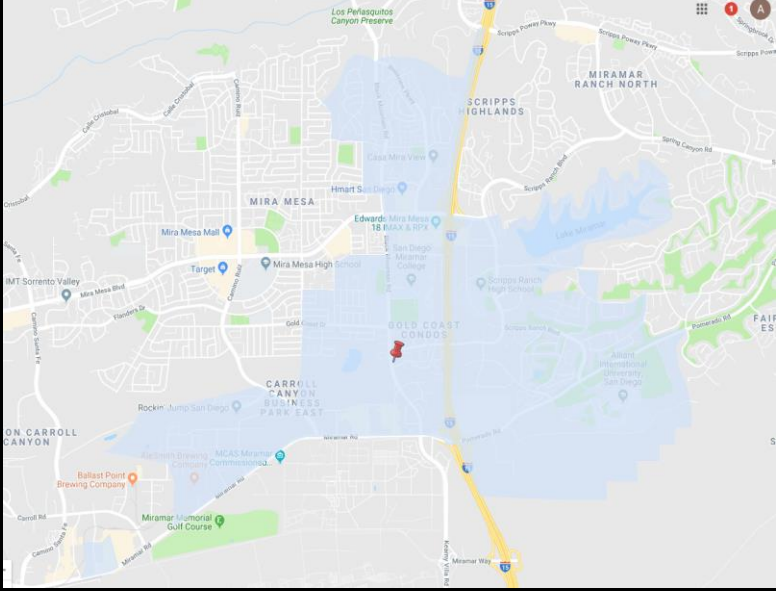
# Fire-Rescue: Existing Engine District & Fire Station



**Engine District 41 (est. 1990)**



**Engine District 38 (est. 1980)**



**Engine District 44 (est. 2001)**



## DESCRIPTION

- 10,500 SQ FT
- House 11 Crew Members
- One Engine, Truck & Battalion Chief or Ambulance
- Cost - \$12.2 million
- Funding Available - \$1.09 million
- **Funding Needed – 11.11 million**



**Proposed near Camino Santa Fe and Miramar Road**

## **Overview:**

- The Mira Mesa branch is a 20,000 sf facility
- Opened in 1994
- One of the largest collections in the City Public Library system.

## **21<sup>st</sup> Century Library Building Plan:**

- SD Library Dept. currently in the process of updating the plan & identify maintenance needs and facility conditions



**More information about current library projects @**

<https://www.sandiego.gov/public-library/about-the-library/projects>



## **Overview:**

- Schools in Mira Mesa are dispersed throughout the community and easy walking distance of most homes
- San Diego Unified School District Demographer determines the need for additional schools

## **Schools in the Community:**

- Seven elementary schools;
- Two middle schools;
- One high school;
- Two charter schools;
- Two private schools; and
- One community college



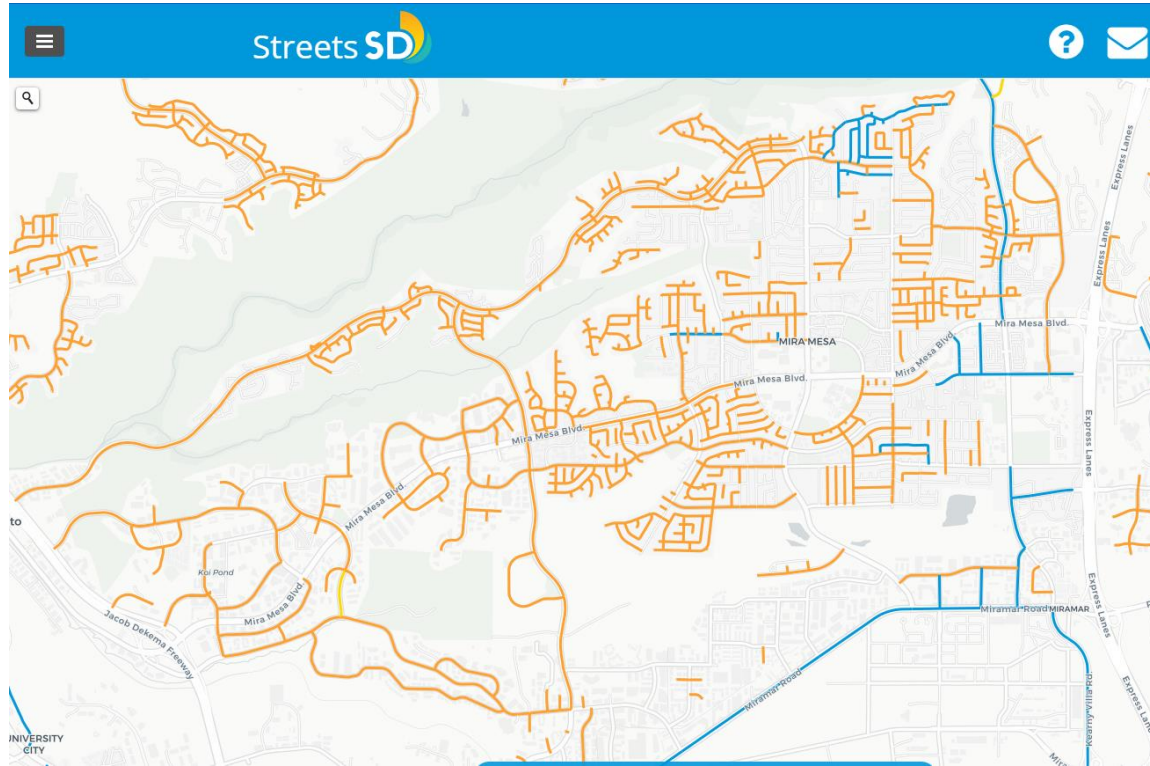


# Available School Capacity

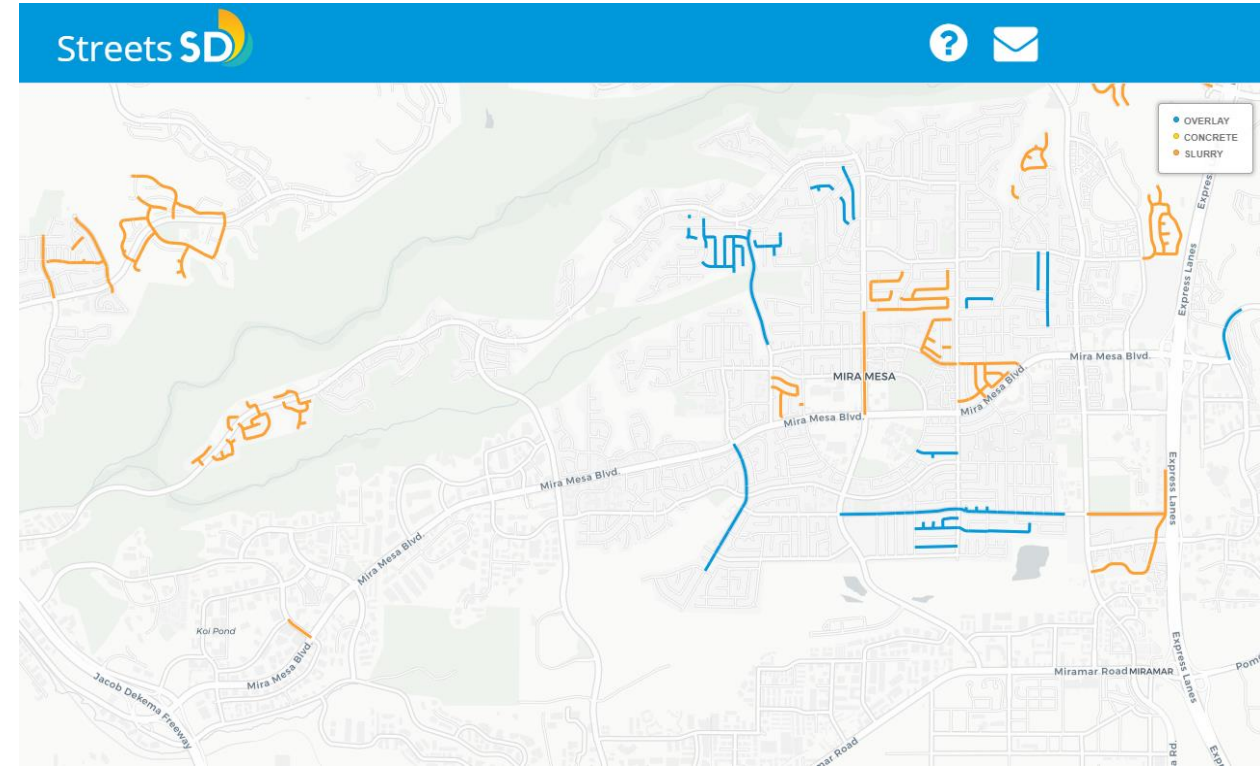
School Name	2007-2008	2017-2018	Capacity	Available Capacity
Sandburg Elementary	672	571	840	269
Ericson Elementary	753	692	900	208
Hage Elementary	741	696	820	124
Hickman Elementary	683	424	650	226
Jonas Salk Elementary	N/A	702	725	23
Mason Elementary	776	552	770	218
Walker Elementary	565	389	840	451
<i>Subtotal</i>				1,519
Challenger Middle	1,137	976	1,130	154
Wangenheim Middle	1,308	941	1,310	369
<i>Subtotal</i>				523
Mira Mesa High	2,592	2,338	2,535	197



# Street SD – Street Paving and Maintenance (not part of plan update – informational)



**Work Completed: July 2013 to Sept. 2018**



**Work Planned**

More information@ <http://streets.sandiego.gov/>





# Water, Sewer, & Storm Water Infrastructure



## Storm Water Division

9370 Chesapeake Drive, Suite 100  
MS 1900  
San Diego, CA 92123

To report storm water pollution such as over-irrigation, landscaping waste, and wash water, use the [Get it Done](#) app, call 619-235-1000, or email [swppp@sanidiego.gov](mailto:swppp@sanidiego.gov).

Storm Water Service Request



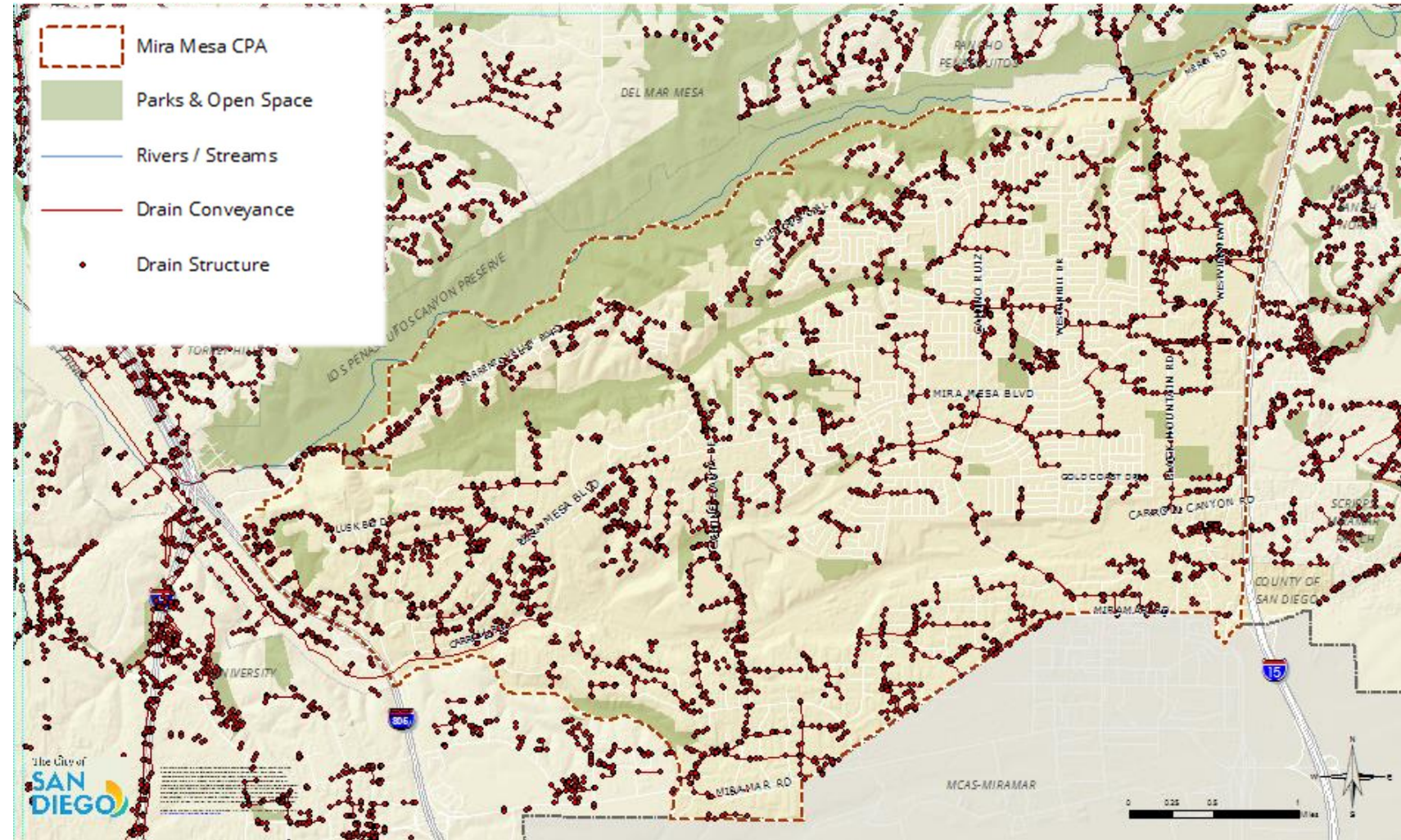
## Public Utilities

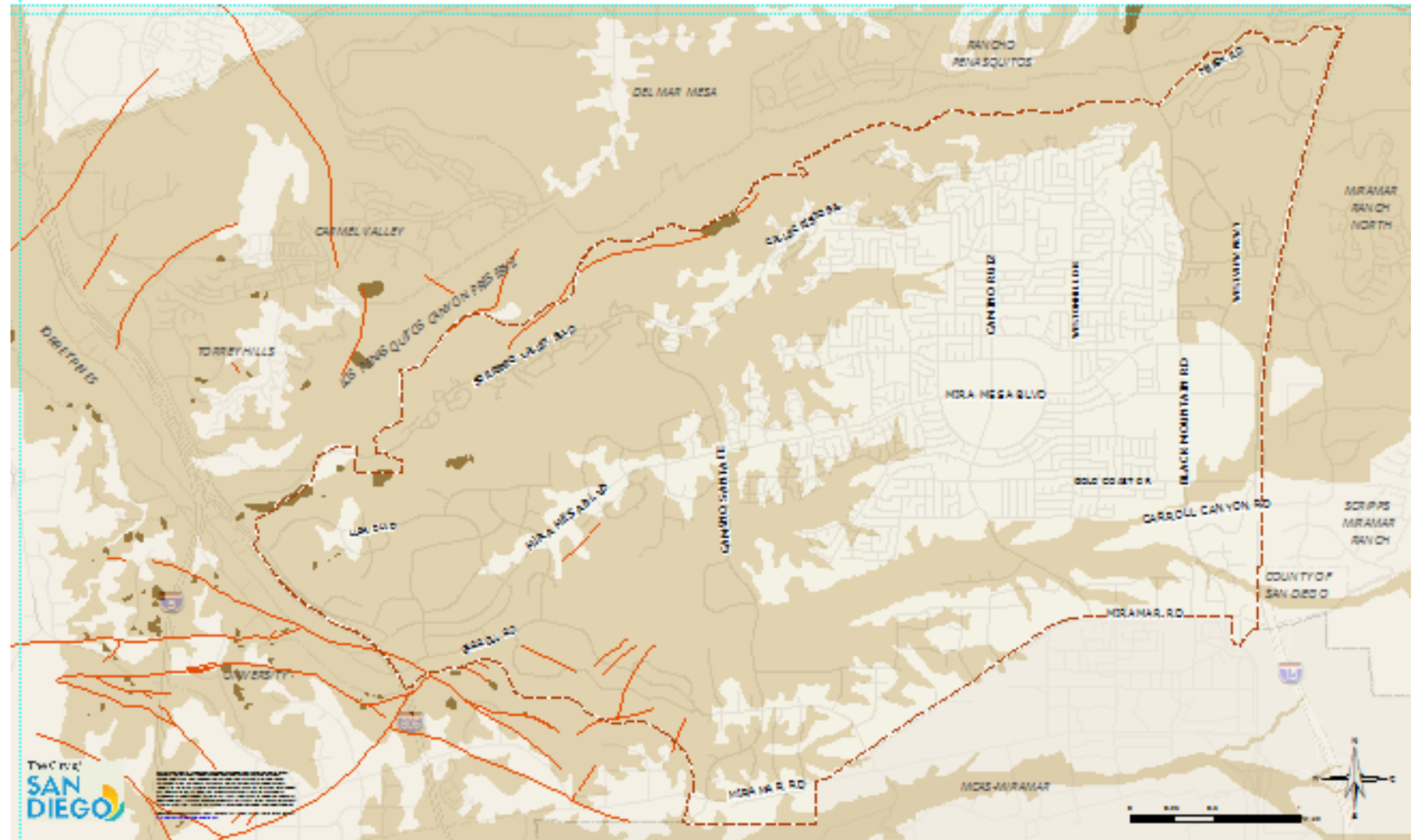
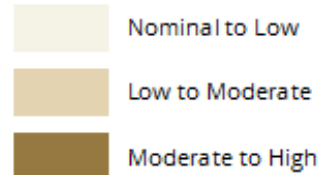
To report a water leak, sewer spill or pressure problem, call **619-515-3525**

For billing questions and concerns, call **619-515-3500**

Bill Payment Options

Establish/Cancel Service









# Utilities – Undergrounding Info Map

## Legend

Completed



Construction



Design



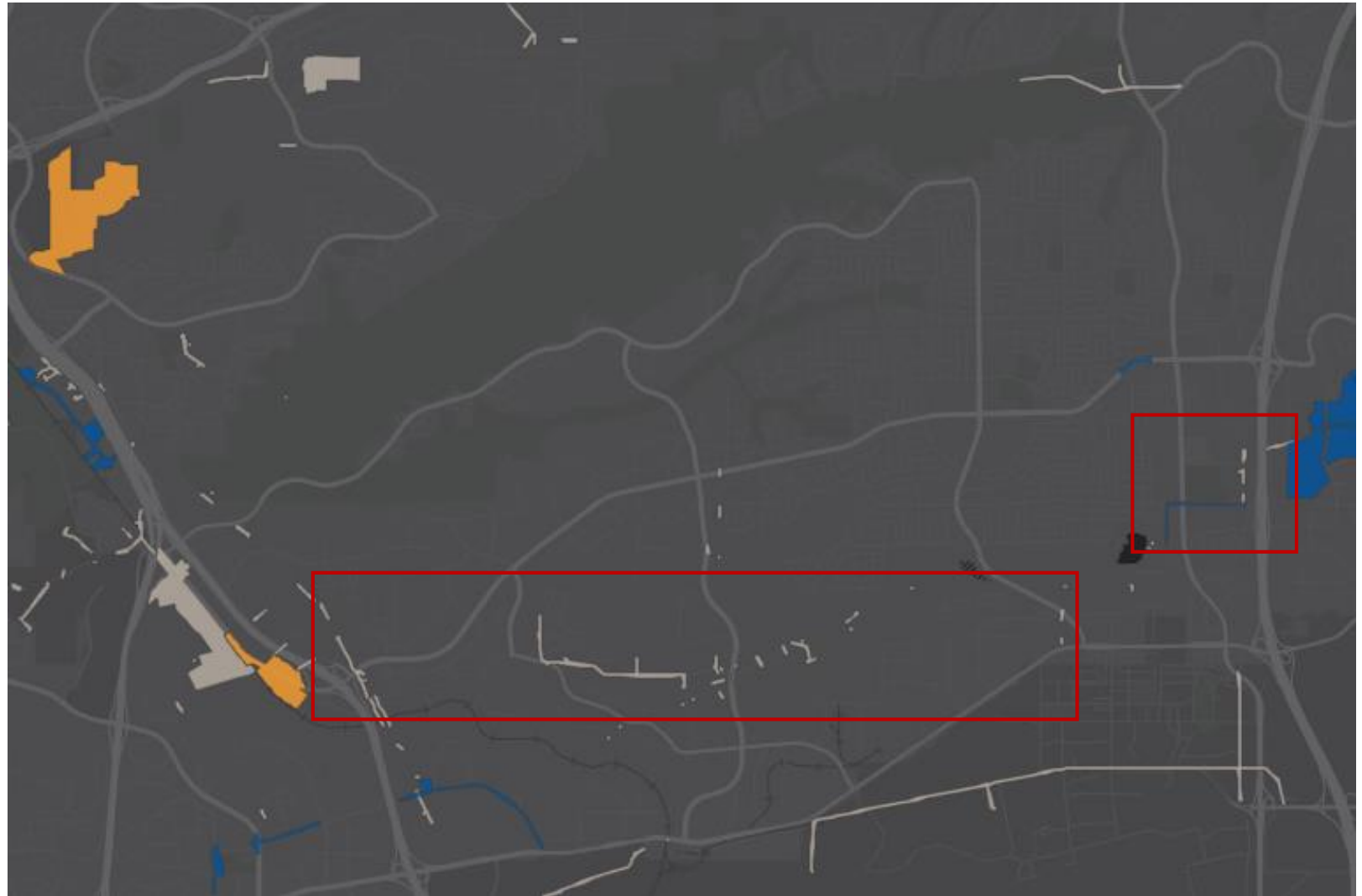
Environmental Planning



Allocated



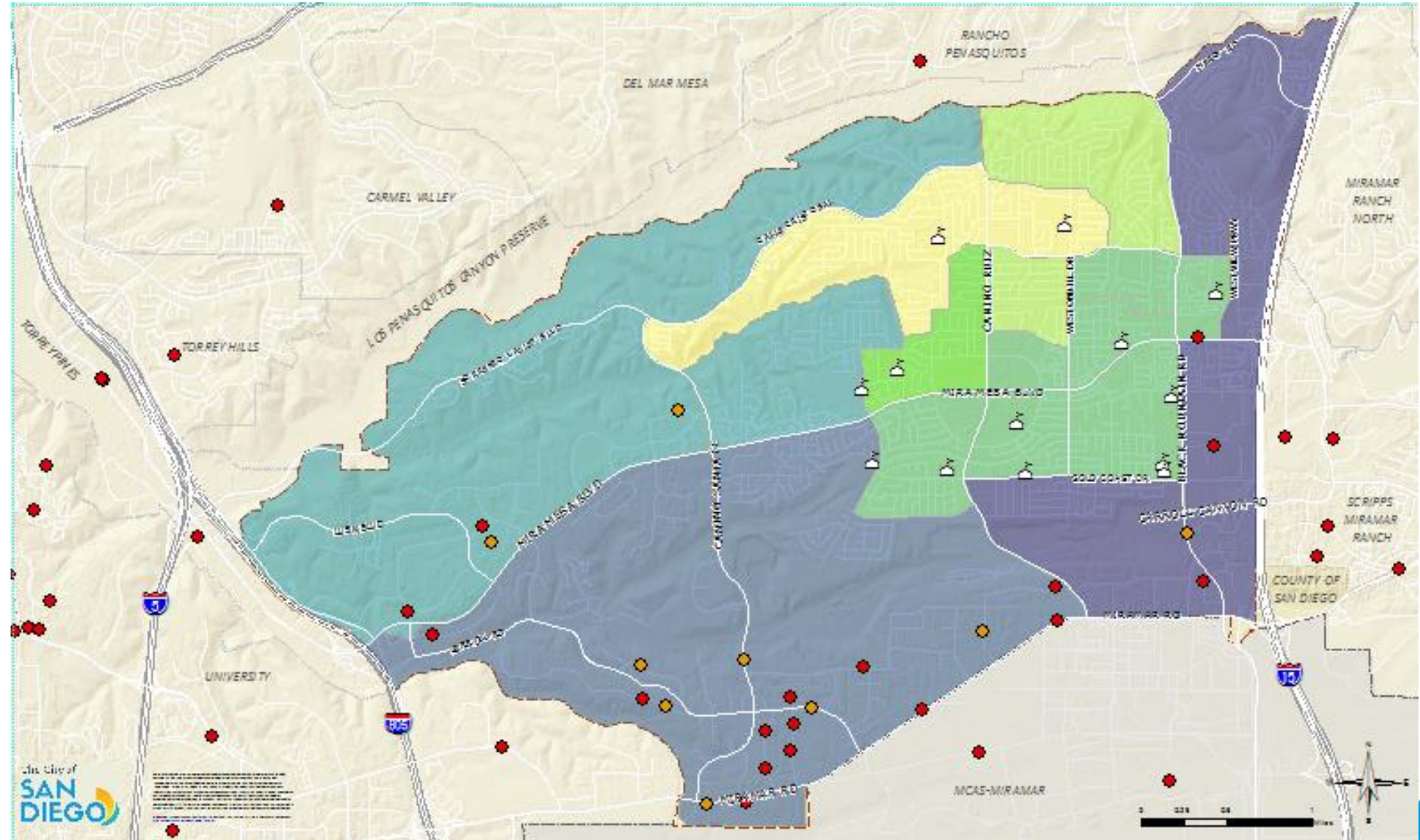
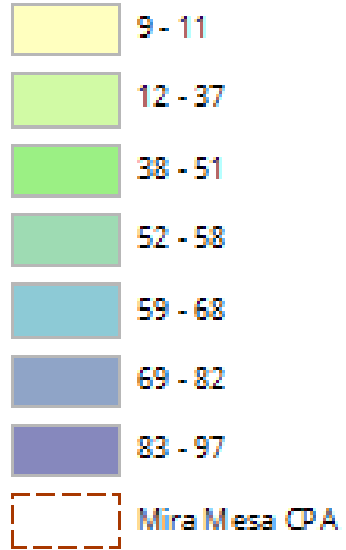
Unallocated



**More information@** <https://www.sandiego.gov/undergrounding>

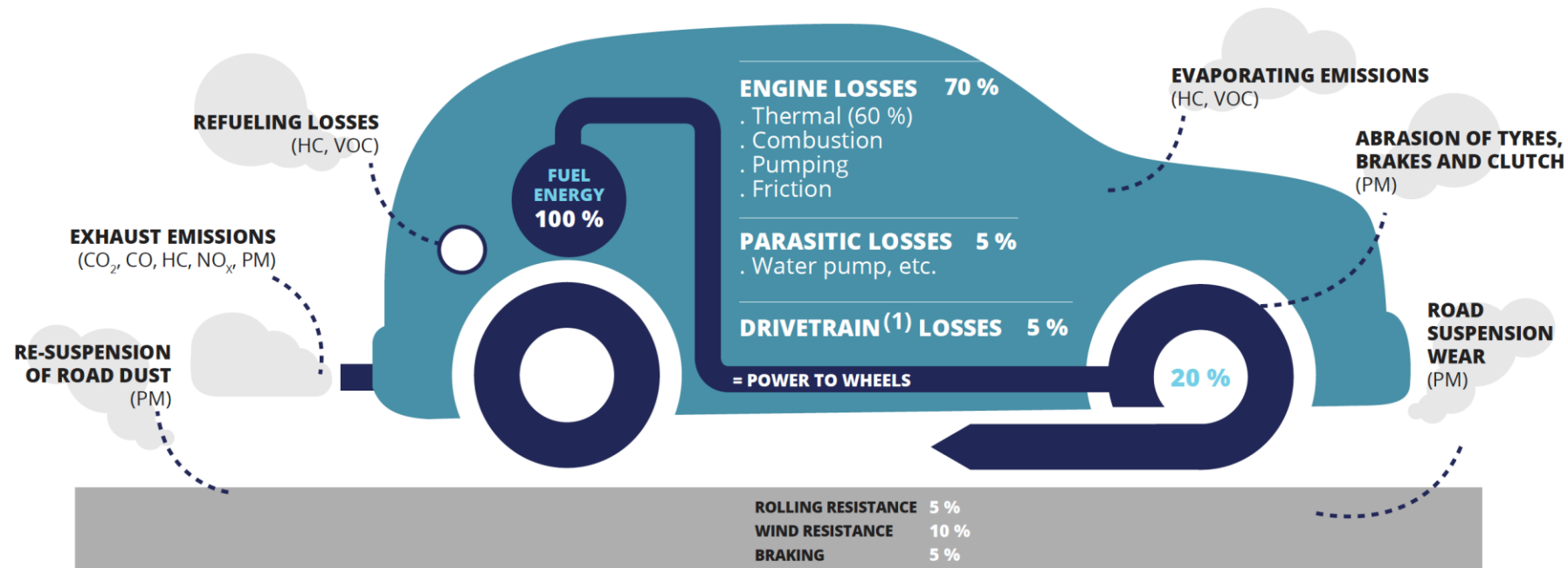


## Traffic Density Percentile



## Vehicle emissions and efficiency

Fossil fuel powered road transport represents the most significant source of transport related air pollution. Each vehicle releases pollutants from a number of sources.



<sup>(1)</sup> The drivetrain of a motor vehicle is the group of components that deliver power to the driving wheels. This includes the transmission, the axles and the wheels.

HC - Hydrocarbons; VOC - Volatile Organic Compound; PM - Particulate Matter; CO - Carbon monoxide; CO<sub>2</sub> - Carbon dioxide; NO<sub>x</sub> - Nitrogen oxides.

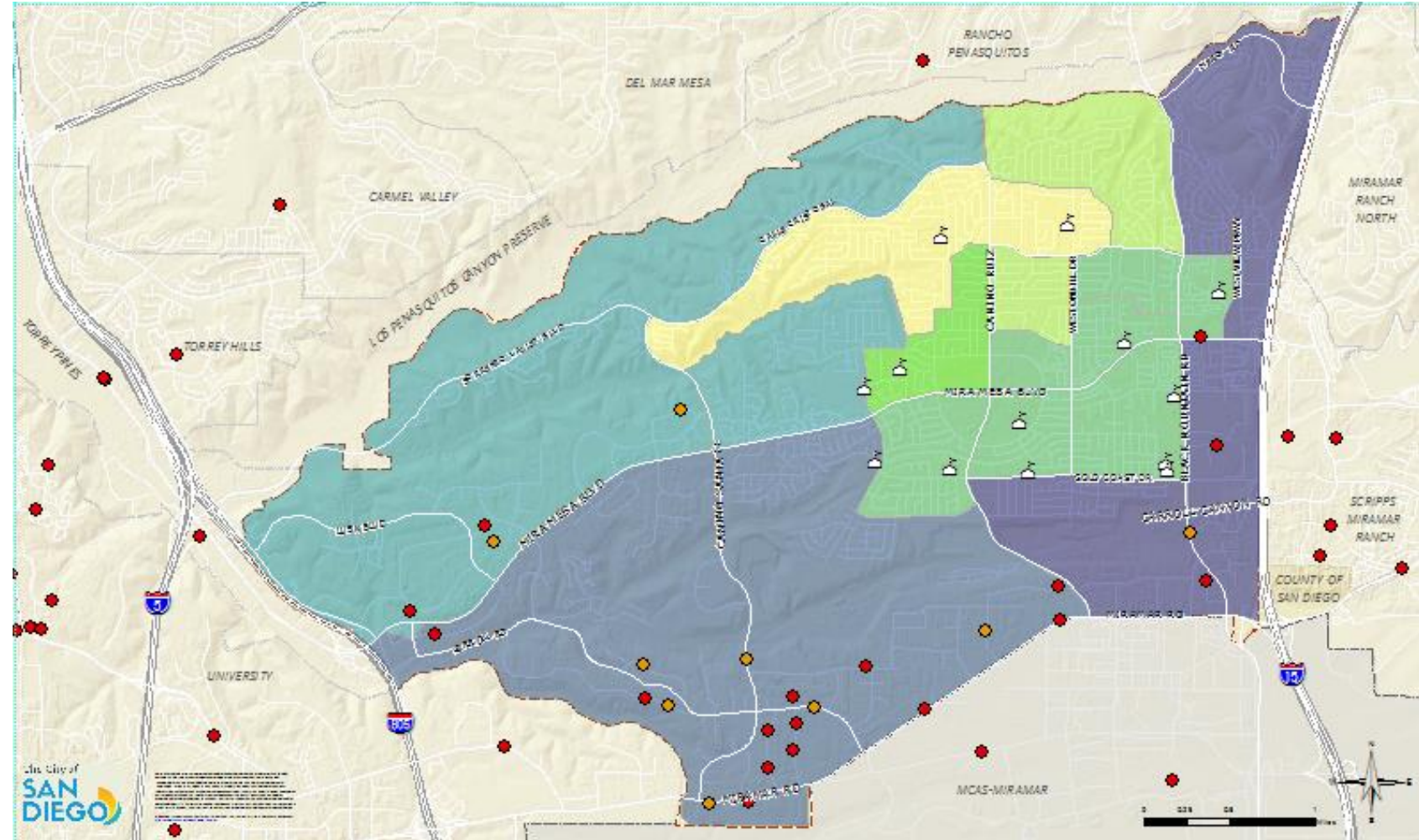
Source: EEA Report — Explaining road transport emissions — a non-technical guide (2016)



- Toxic Release Inventory Site
- Known or Potential Contaminated Site
- 🏫 Schools

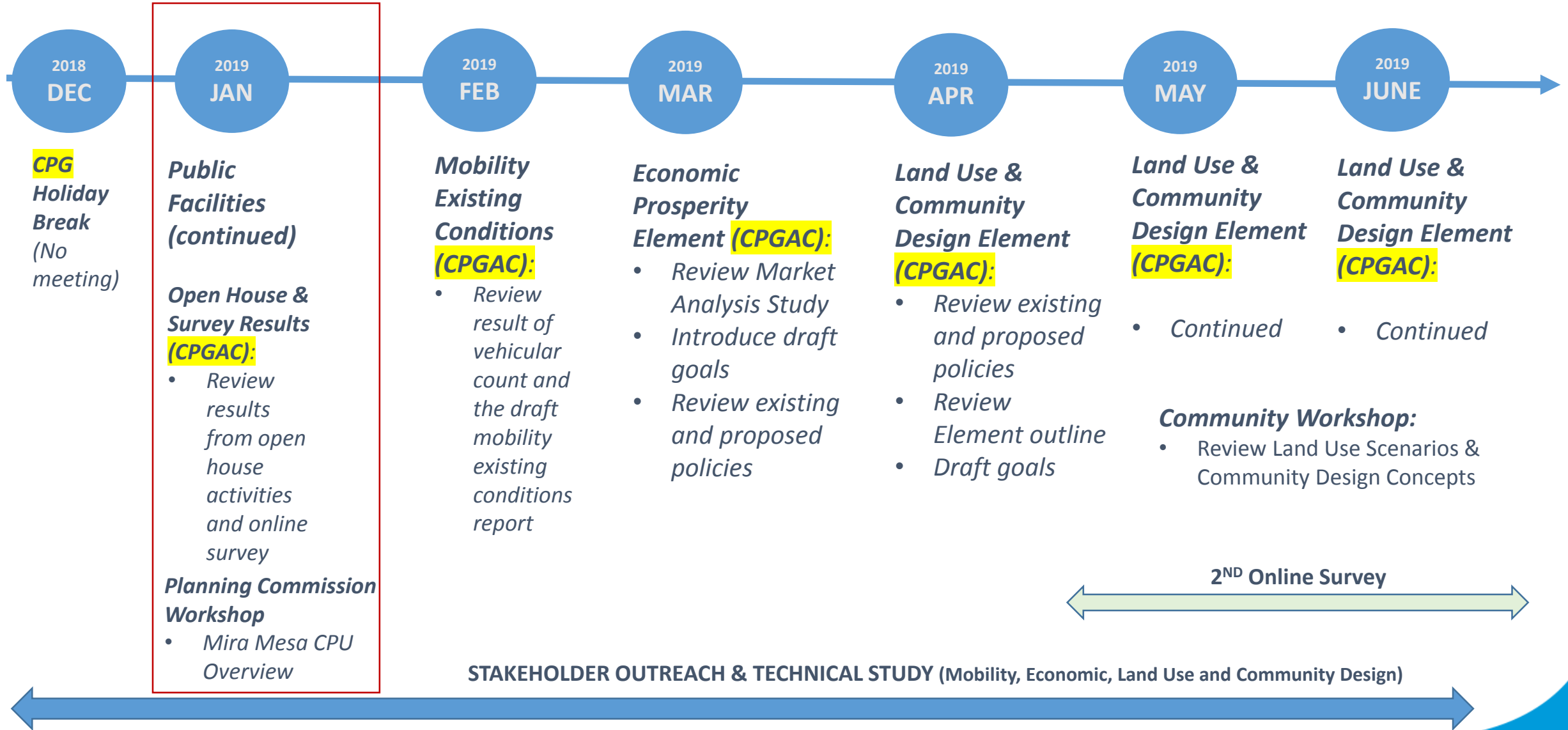
## Site Types:

- Dry Cleaner
- Paint Store
- Manufacturing
  - Electronic
  - Chemical
  - Petroleum
- Extractive
- Other Industrial



## NEXT STEPS







An aerial photograph of the Mira Mesa area, showing a mix of residential neighborhoods, commercial centers, and green spaces. Yellow lines are drawn across the image to delineate specific geographic areas or planning zones.

# Mira Mesa Community Plan Update: Public Facilities, Services, & Safety



## Discussion, Questions & Answers

[www.PlanMiraMesa.org](http://www.PlanMiraMesa.org)