

# Mira Mesa Community Plan Update: Sustainability/Climate Action/Conservation

## Planning Department

Mira Mesa CPU –Advisory Committee – Sept 17, 2018

6:10pm to 7:00pm – Mira Mesa Library – Alex Frost, Senior Planner



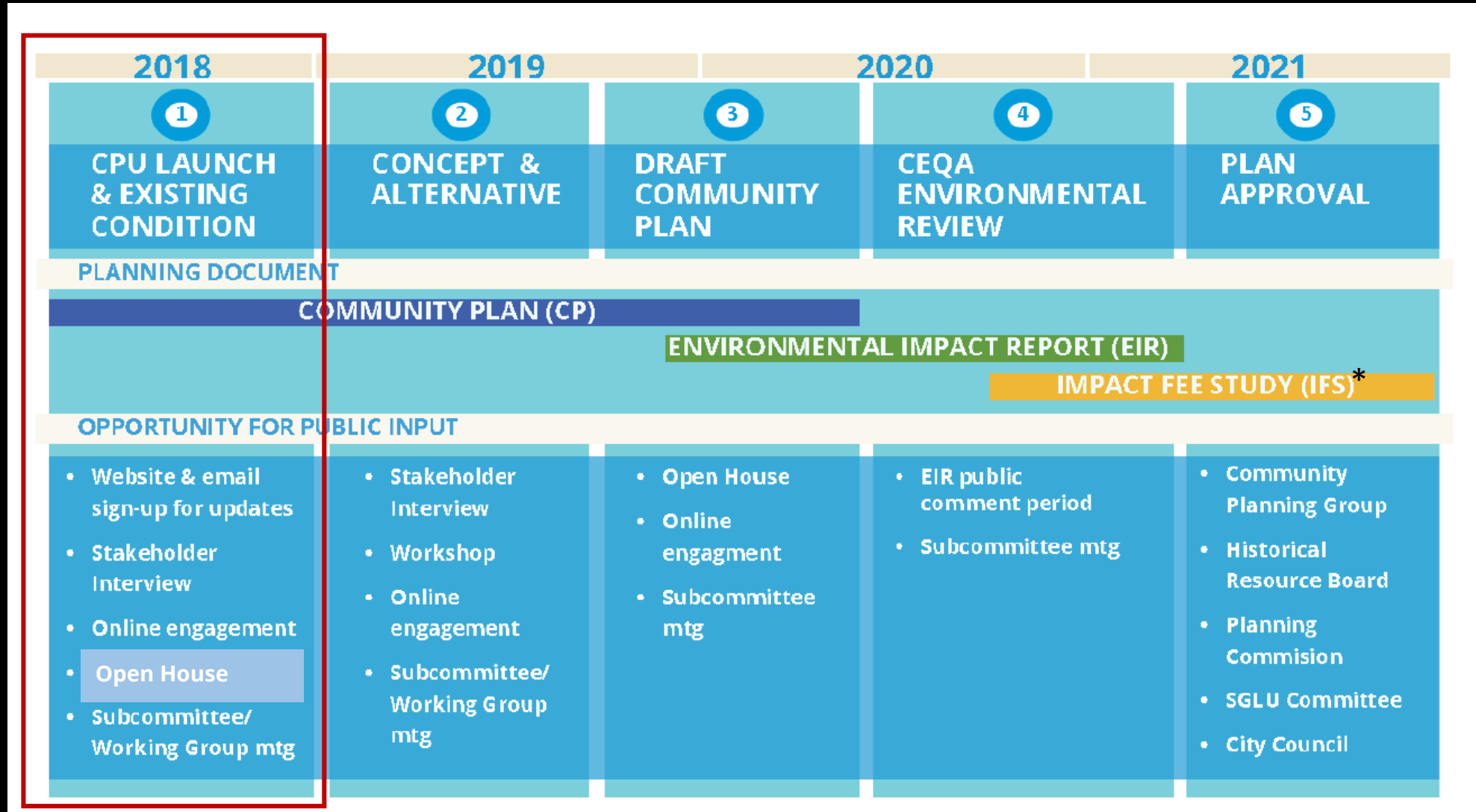


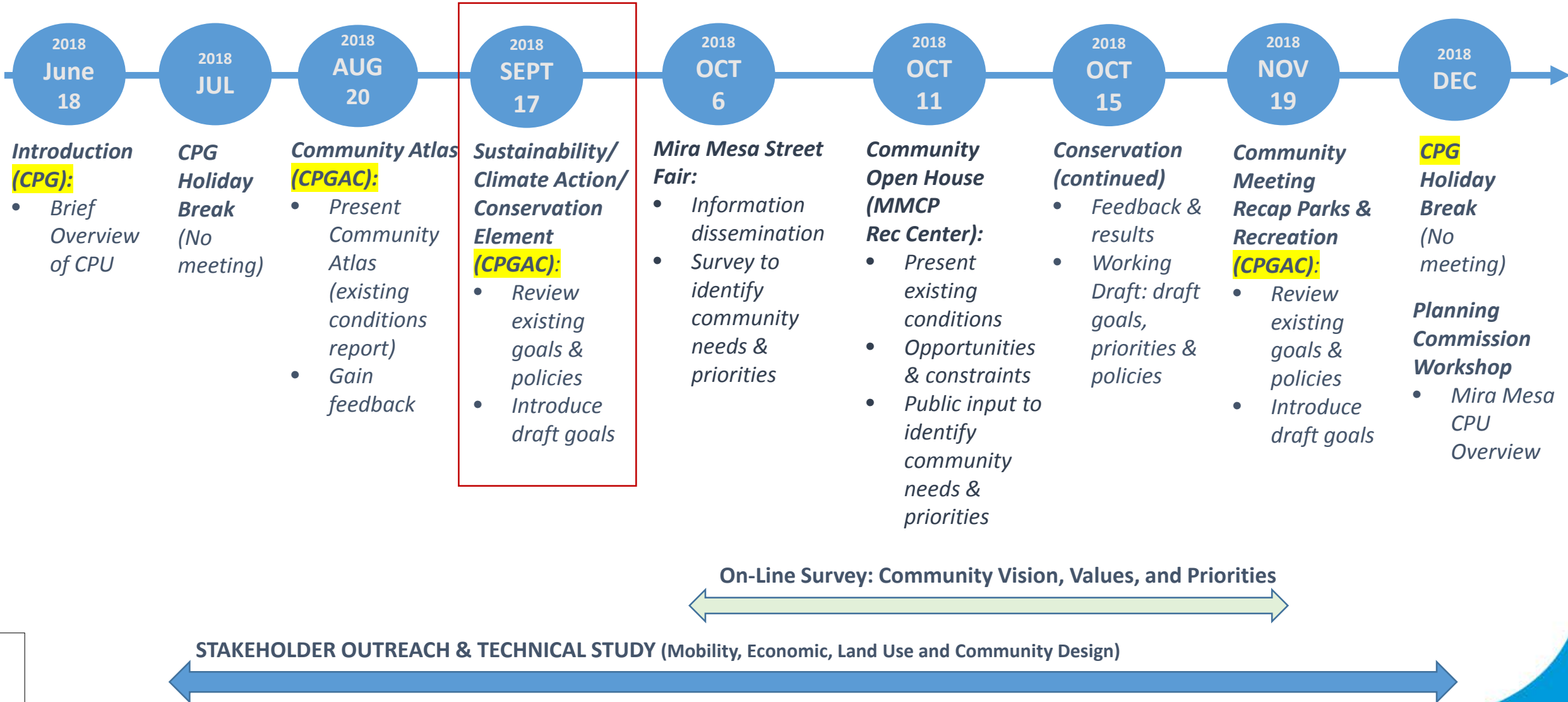
# Planning Department – Presentation Outline

1. Recap and Plan Update Status
2. Overview: Guiding Documents
  - General Plan (GP) & GP Conservation Element
  - Climate Action Plan
3. Mira Mesa Existing Conditions – Conservation/Open Space
4. Goals and Policies Discussion



# Process and Timeline







- **Changing Demographic & Growth Pressure – Jobs in Mira Mesa CPA grew 6.6 times faster than housing between 2010 to 2015**
- **Employee Commute: 75,610 workers commute into Mira Mesa everyday**
- **Affordable Housing Crisis: MM Median Asking Rent Two Bedroom - \$2,177**
- **Land Use & Mobility Existing Conditions – Park Deficit, High Collision & Infrastructure**
- **Regulatory Constraints & Opportunities: Prime Industrial, Airport, Transit Priority Areas, & Five Focus Areas**
- **Plan Approach, Tools and Technique**
- **Advisory Committee Feedback**

2018  
AUG  
20

*Community Atlas*

- *Community Atlas:  
Existing Conditions  
Report*

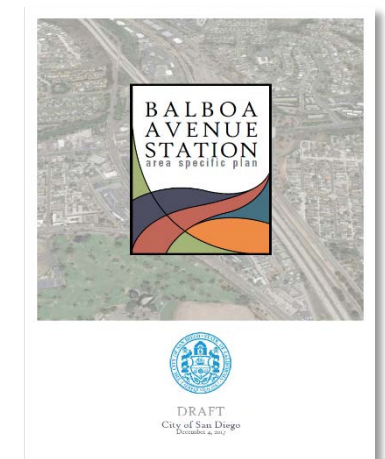
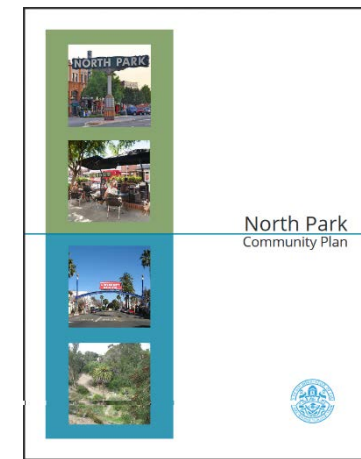
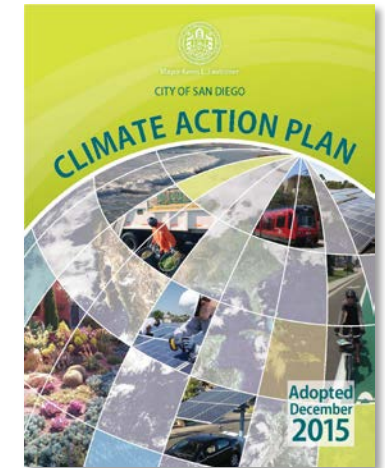
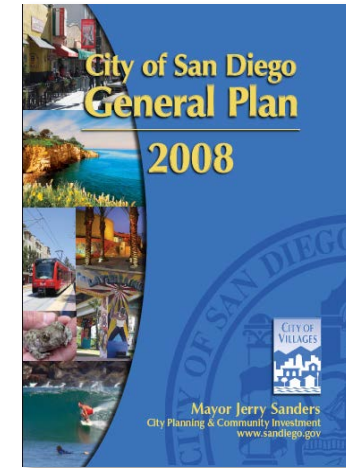


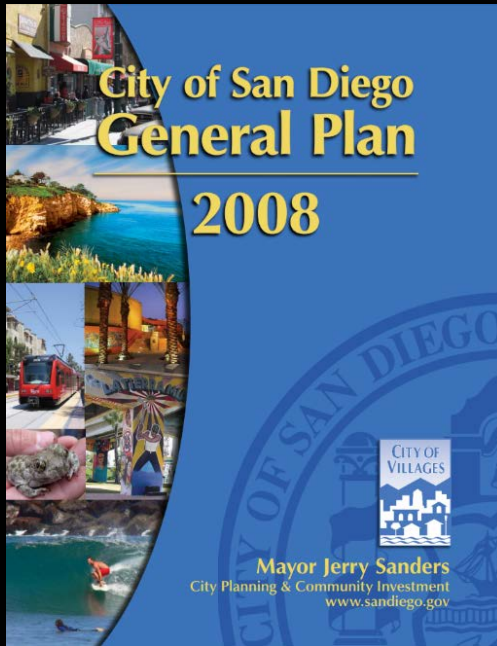
# Mira Mesa Community Plan Update

## OVERVIEW

### Citywide Planning Document

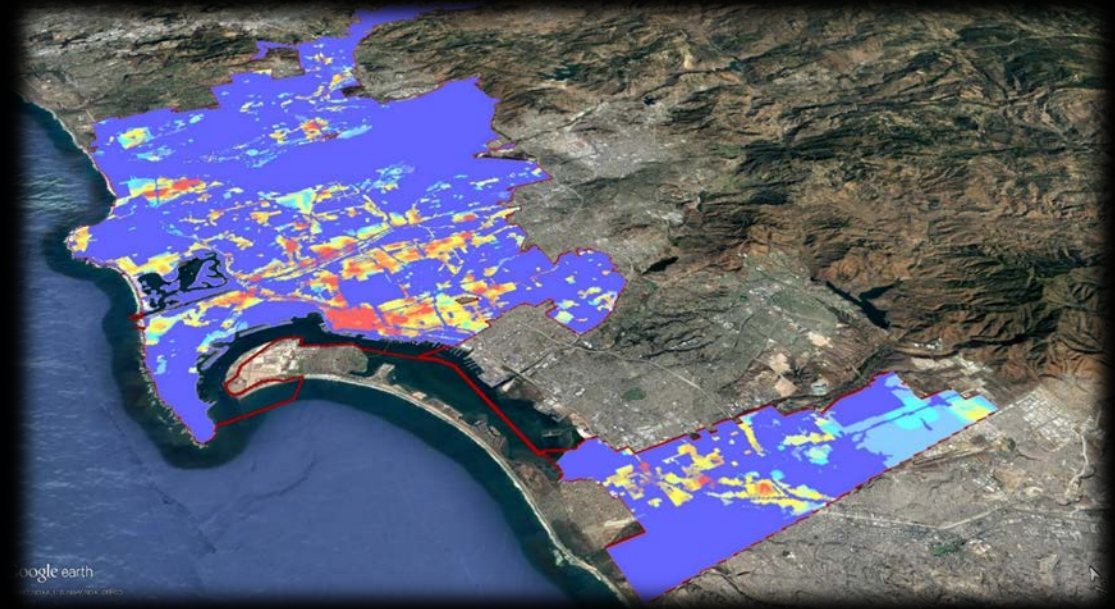






## City of San Diego General Plan

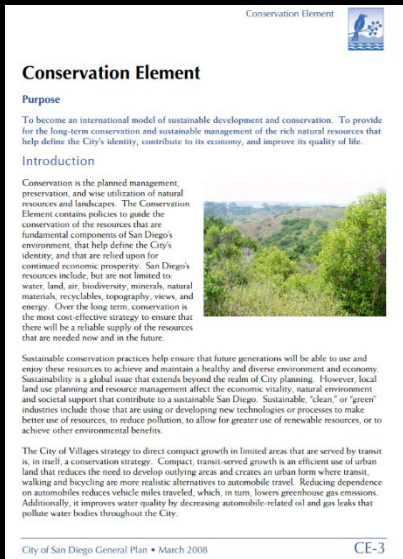
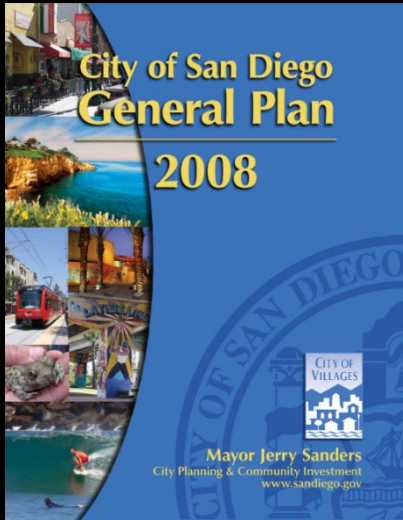
- Provides a Comprehensive Slate of Citywide Policies
- Furthers The City of Villages Smart Growth Strategy
- Contains Eight Elements:
  - Land Use/Community Plan
  - Mobility
  - Urban Design
  - Economic Prosperity
  - Public Facilities/Services/Safety
  - Recreation
  - **Conservation**
  - Noise & Historic Preservation



**General Plan – Village Propensity Map**



# General Plan – Conservation Element (14 subcategories)



Climate  
Change &  
Sustainable  
Development

Open Space &  
Landform  
Preservation

Coastal  
Resources

Water  
Resource  
Management

Urban Runoff  
Management

Air Quality

Biological  
Diversity

Wetlands

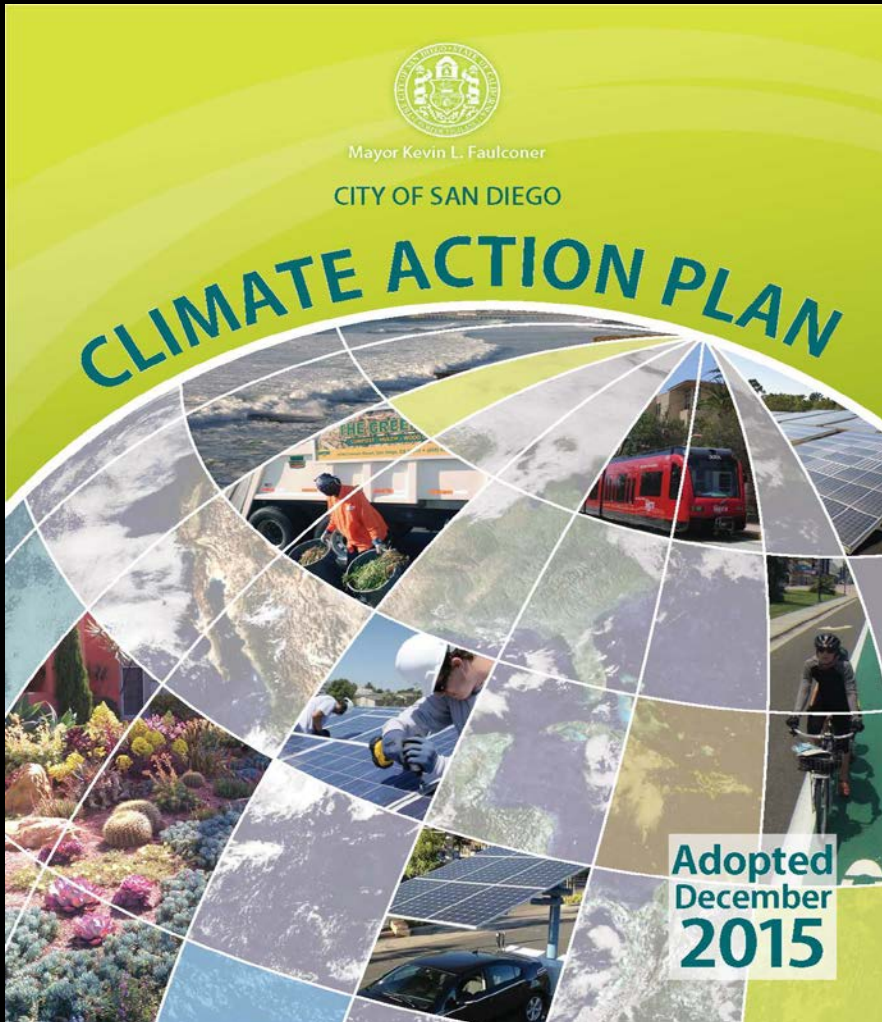
Sustainable  
Energy

Urban Forestry

Mineral  
Production

Agricultural  
Resources

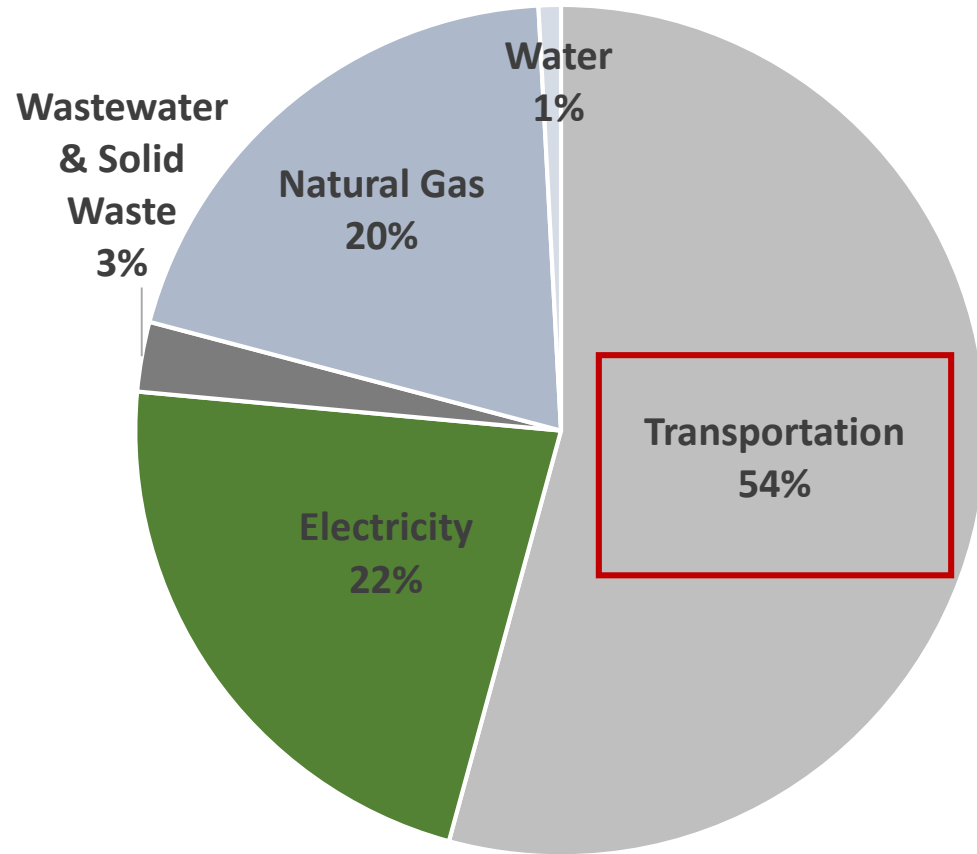
To become an international model of sustainable development & conservation



- Provides Citywide Emission Reduction Targets:
  - 50% reduction in emission and 100% renewable electricity by 2035
- Highlights 5 Strategies to Cut Emissions:
  1. Energy and Water Efficiency
  2. Clean and Renewable Energy
  3. Mobility and Land Use
  4. Zero Waste
  5. Resilience



## City of San Diego 2016 GHG Emissions



- State of California and City of San Diego are making significant progress on reducing emissions while growing the economy;
- Due to increase in renewable electricity generation; but
- Emission from transportation sector continue to rise, despite the rapid growth in electric vehicle sales

Source: City of San Diego Climate Action Plan 2017 Annual Report



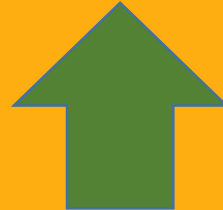
**Transit**



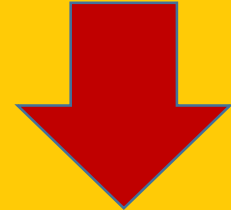
**Bicycling**



**Walking**



**Commute  
Distance**





# City of San Diego Climate Action Plan (CAP) – Transit Priority Area (TPAs)

■ TPA

**CAP prioritizes growth & infrastructure in TPAs to:**

- increase transit use, biking, scooting, walking;
- reduce vehicles miles driven (VMT);
- promote transit rich, walkable communities; and
- protect open space

Mira Mesa CPA

Google earth

Image Landsat / Copernicus

Data USGS

Data SIO, NOAA, U.S. Navy, NGA, GEBCO

5 mi



## **MIRA MESA COMMUNITY ATLAS**

### Conservation/Open Space Existing Conditions



# Mira Mesa Community Plan Area Flood Zone

- 100 year floodway
- 100 year flood plain
- 500 year flood plain

The 100-year floodway, 100-year flood plain, & 500-year flood plain are delineated by the Federal Emergency Management Agency's (FEMA) Flood Insurance Rate maps



# Very High Fire Hazard Zone – Cal Fire 2018

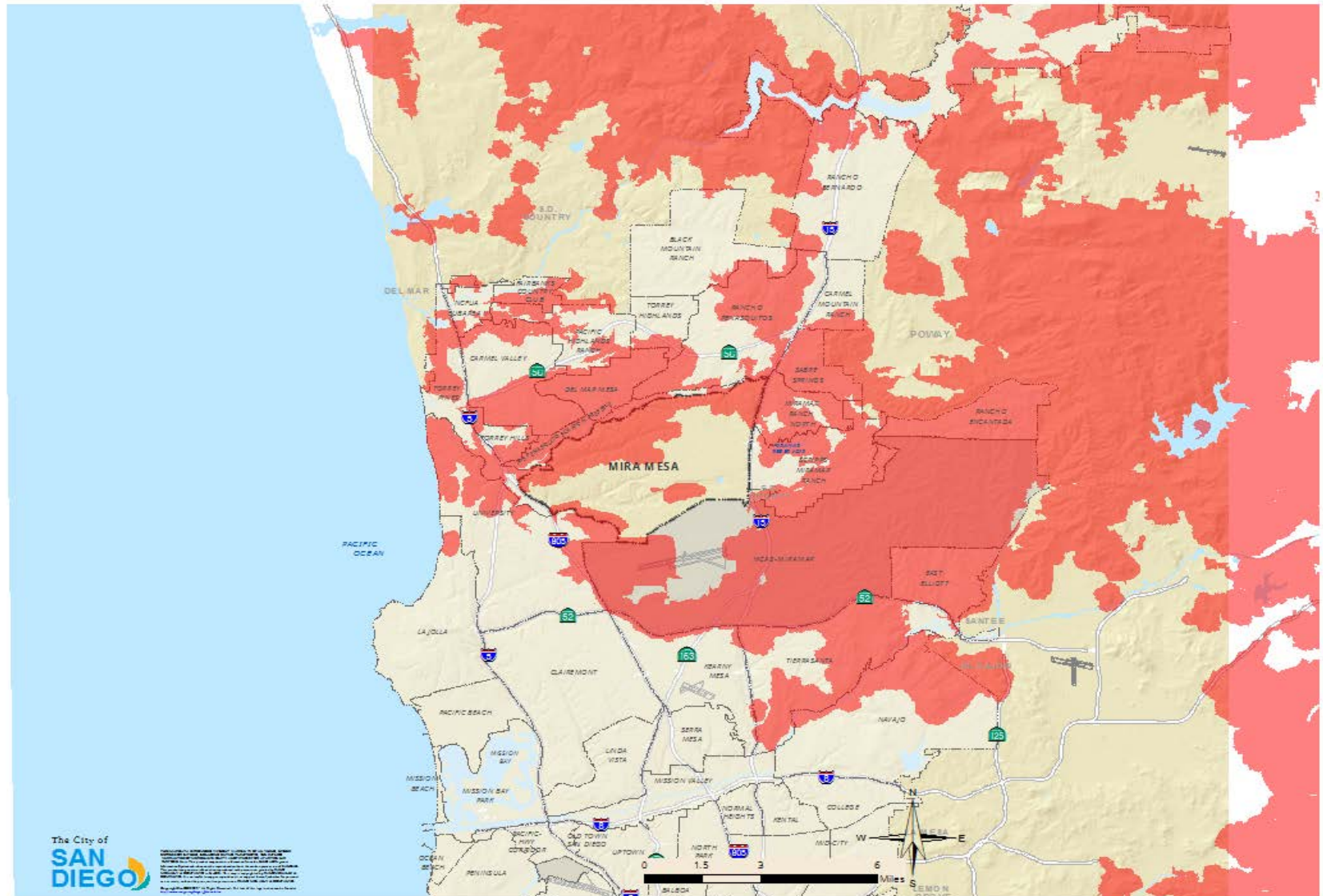
Very High Fire Hazard Severity Zones

The exterior wildfire exposure protection codes & the 100 foot clearance requirements apply to the design & construction of new building located in Very High Fire Hazard Severity Zone



Very High Fire  
Hazard Severity Zones

Source: CAL FIRE and SANGIS





# Multi-Habitat Planning Area (MHPA) and Vernal Pool

■ MHPA Planning Area  
■ Vernal Pool

- MHPA is City's planned habitat preserve within the Multi-Species Conservation Program (MSCP) Subarea
- Most of Mira Mesa's undisturbed vegetation/sensitive habitats are located in the MHPA
- Public access is allowed in many areas

Miramar  
College Vernal  
Pool Area



2 mi



# Private Ownership within Multi-Habitat Planning Area (MHPA)

- MHPA Planning Area
- Vernal Pool
- Private Ownership

Miramar  
College Vernal  
Pool Area

- For premises located within or adjacent to MHPA, the project must demonstrate compliance with the MHPA land use adjacency guidelines

For more information visit:  
[www.sandiego.gov/planning/programs/mscp](http://www.sandiego.gov/planning/programs/mscp)





**1992 MIRA MESA COMMUNITY PLAN**  
Conservation Goals & Policies Discussion  
(Refer to Handout)





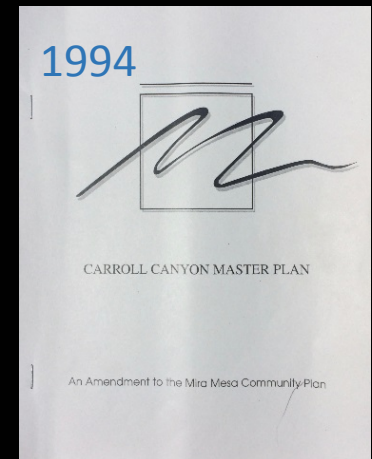
## **A. Preliminary Draft Goals and Select Policies** (Existing Community Plans & General Plan)

## **B. Discussion & Feedback**

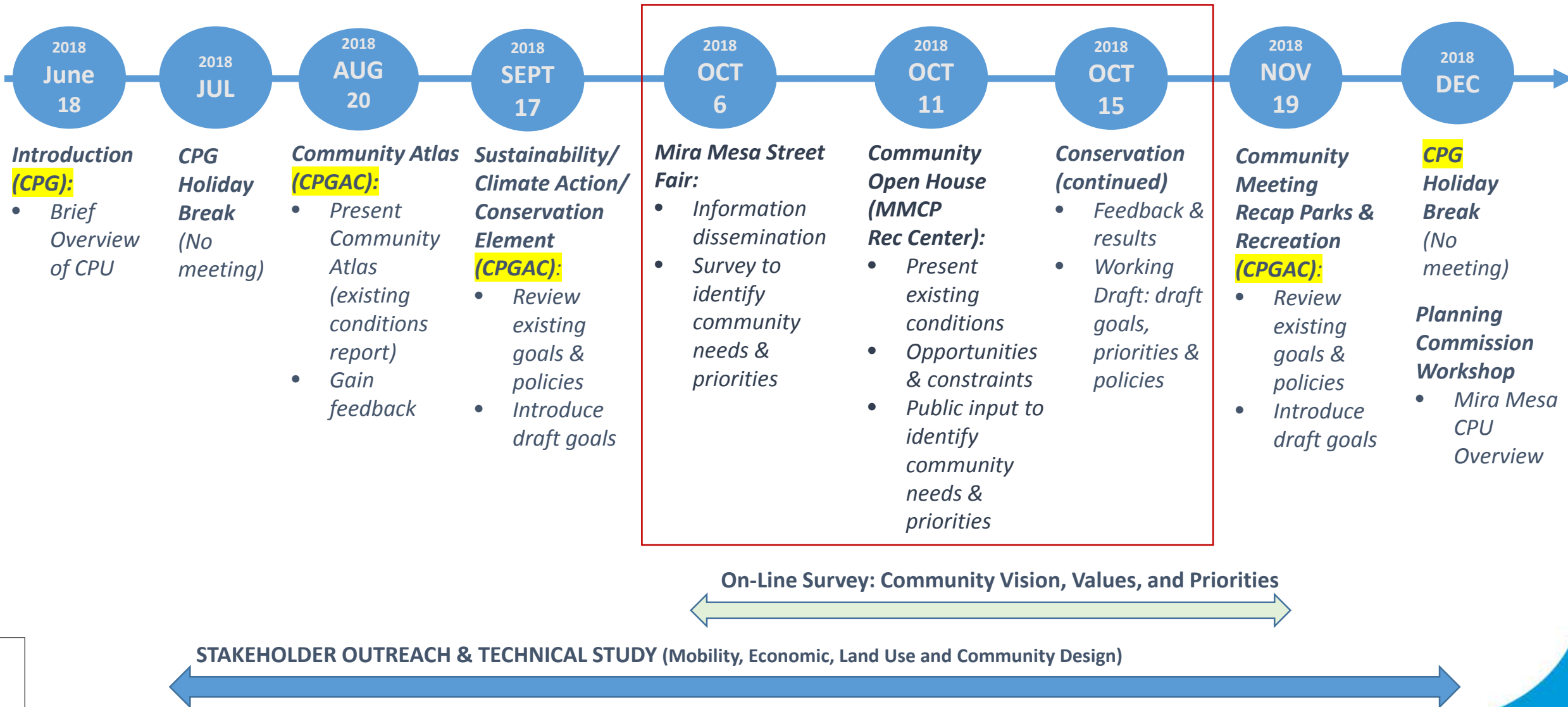
## **C. Working Draft Goals and Policies**

## A community-wide open space system that:

- Preserve sensitive resources, including plant and animal habitats, and wildlife linkages;
- Preserve natural drainage systems;
- Protects the public health and safety by restricting development in areas subject to flooding or high fire risk;
- Provide opportunities for outdoor recreation;
- Guides the form of development by defining boundaries for urban expansion; and
- Provides linkage in the regional open space system of interconnected canyons and hillsides.











# Mira Mesa Community Plan Update: Sustainability/Climate Action/Conservation



## Discussion, Questions & Answers

[www.PlanMiraMesa.org](http://www.PlanMiraMesa.org)

More information is available in the Draft Mira Mesa Community Atlas: Existing Conditions Report:  
<https://www.sandiego.gov/planning/community/cpu/miramesa/atlas-documents>