

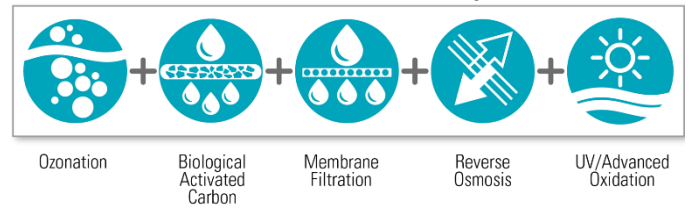
What is Pure Water San Diego?

San Diego relies on importing 85% of its water supply from the Colorado River and Northern California Bay Delta. The cost of this imported water has tripled in the last 15 years and continues to rise. With limited local control over its water supply, the City of San Diego is more vulnerable to droughts, climate change and natural disasters.

Pure Water San Diego is a phased, multi-year program that will provide 1/3 of San Diego's water supply locally by 2035. The Pure Water Program:

- Uses proven technology to clean recycled water to produce *safe, high-quality* drinking water
- Provides a *reliable, sustainable*, water supply
- Offers a *cost-effective* investment for San Diego's water needs

Water Purification Process



Miramar Reservoir Tracer Study

The City of San Diego Public Utilities Department will conduct a tracer study at Miramar Reservoir as part of the Pure Water Program. The results of the tracer study will be used to confirm the accuracy of a hydrodynamic model of Miramar Reservoir. The model will show how water moves through the reservoir.

Tracer Study Schedule

- Preliminary Work: Early to mid-May 2019
- Tracer Study: Mid-July
- Public Boating Closure: First two days of tracer study

Impacts to Recreation

- No impact to parking
- No impact to recreation around the reservoir (i.e. walking or running)
- No impact to onshore fishing around the reservoir
- Reservoir will be closed to boat traffic for the first two (2) days of the tracer study to ensure accuracy of the study

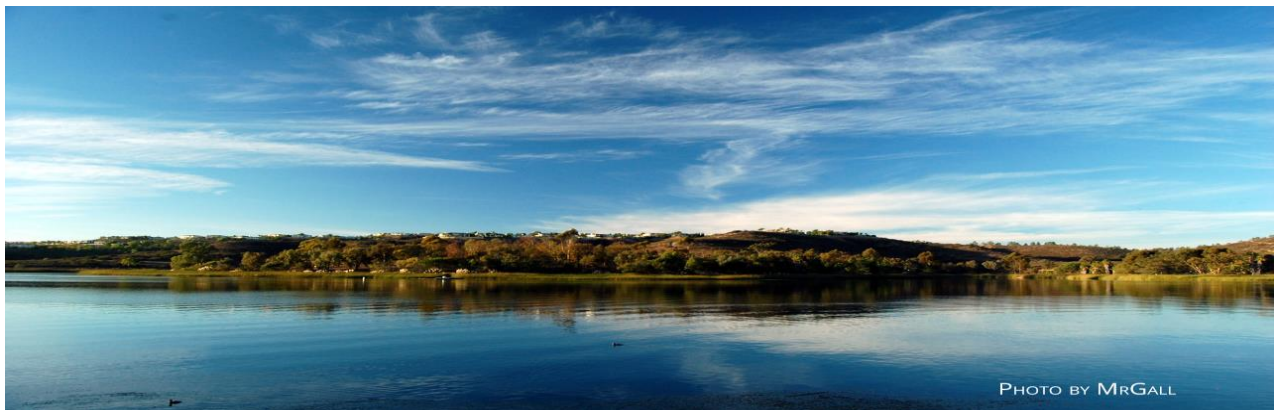
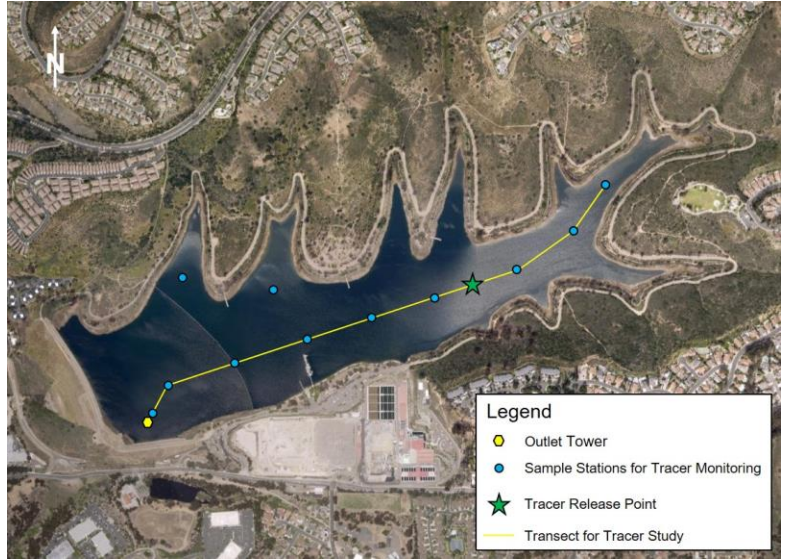


PHOTO BY MRGALL

How the Study Will Be Conducted and What Will Be Seen on the Reservoir

Preliminary work will occur mid to late May 2019. This will include set up of a floating work platform, sample stations and buoys to support tracer release.

The tracer study will take place in mid-July 2019. The tracer will be released 33 feet deep in the reservoir. After release, the tracer will disperse across the span of the reservoir and will not be visible at the surface of the reservoir. Following the tracer release, City staff will be on the water in boats conducting sampling for the next ten days. Sampling will be most frequent the first two days of the study, then become less frequent in following days. There will be minimal nighttime sampling occurring the first two days.



Tracer Information

The tracer, rhodamine WT, is a fluorescent dye that has been approved by the U.S. Environmental Protection Agency for safe use in surface waters. There will be no impact on public health or the reservoir's ecosystem. The water going in and out of the reservoir will be monitored to ensure public health protection.

What does Phase 1 of the Pure Water Program Include?

Phase 1 of the Pure Water Program is comprised of several projects that will convey 30 million gallons of purified water per day to Miramar Reservoir. The purified water will be re-mineralized before being conveyed through a pipeline to Miramar Reservoir. More than 50,000 water quality tests at the City's Pure Water Demonstration Facility have confirmed that the purified water meets or exceeds all federal and state drinking water standards. The purified water will blend with the City's imported and local water sources and be treated again at the Miramar Water Treatment Plant and distributed to the public. A detailed map of the project locations can be viewed online at phase1.purewatersd.org.

Local **residents**, community **groups**, environmental **organizations** and local **businesses** support the **Pure Water Program**.

Do you **support Pure Water**? Like us, follow us:



@PureWaterSD

Want to Know More?

Visit www.purewatersd.org to sign up for a free tour of the Pure Water Demonstration Facility or request a presentation for your organization.

