



## **Mobility Modeling Results – Part 2**

July 12, 2018

- 3:00 – 3:30
  - Mobility Presentation
- 3:30 – 4:30
  - Discussion

# Trip Generation Growth

## *Adopted Plan vs. Base Year*

**Base Year: 399,900**  
**Growth: 142,700**  
**Total: 542,700**  
**% Increase: 35.7%**

**Base Year: 107,400**  
**Growth: 37,100**  
**Total: 144,500**  
**% Increase: 34.5%**

**Base Year: 202,900**  
**Growth: 49,500**  
**Total: 252,400**  
**% Increase: 24.4%**

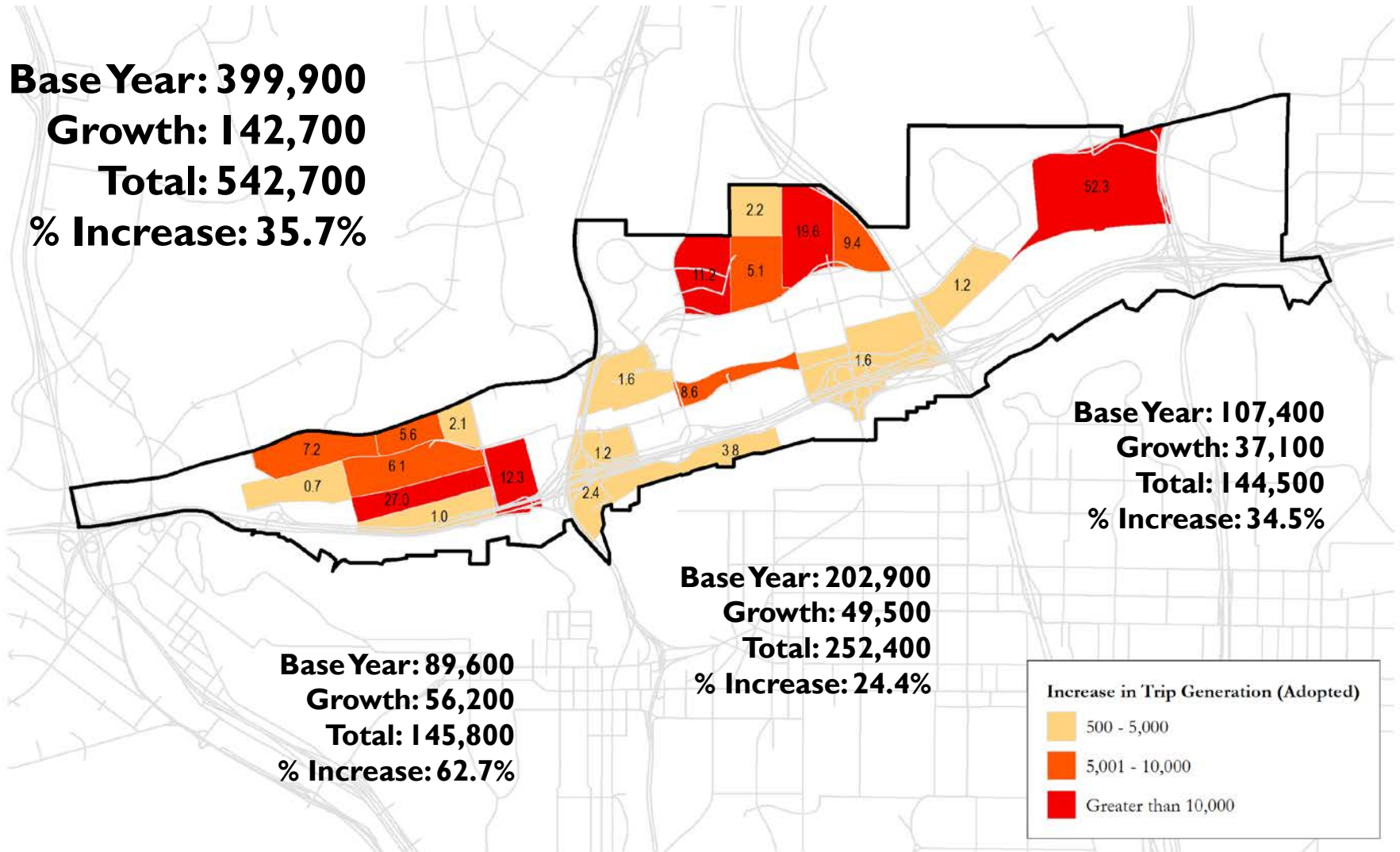
**Base Year: 89,600**  
**Growth: 56,200**  
**Total: 145,800**  
**% Increase: 62.7%**

Increase in Trip Generation (Adopted)

500 - 5,000

5,001 - 10,000

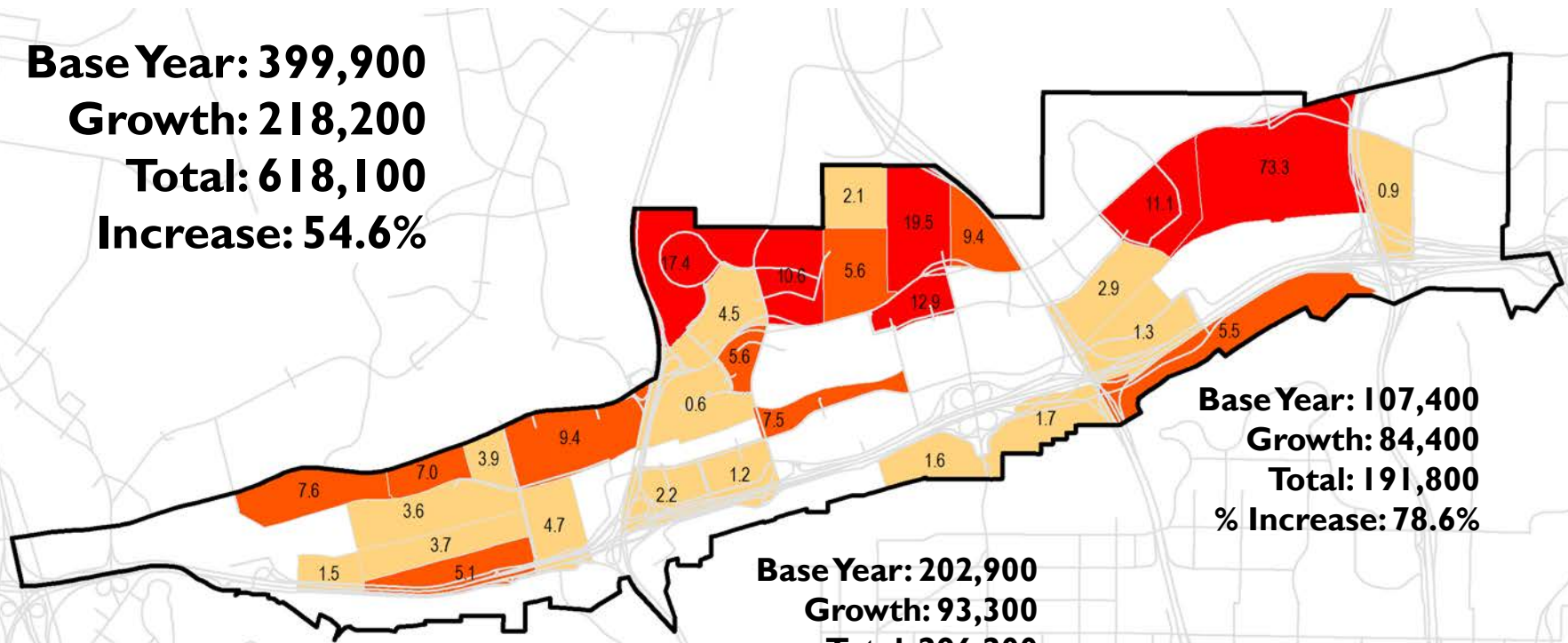
Greater than 10,000



# Trip Generation Growth

## *Proposed Plan vs. Base Year*

**Base Year: 399,900**  
**Growth: 218,200**  
**Total: 618,100**  
**Increase: 54.6%**



**Base Year: 107,400**  
**Growth: 84,400**  
**Total: 191,800**  
**% Increase: 78.6%**

**Base Year: 89,600**  
**Growth: 40,500**  
**Total: 130,100**  
**% Increase: 45.2%**

**Base Year: 202,900**  
**Growth: 93,300**  
**Total: 296,200**  
**% Increase: 46.0%**

Increase in Trip Generation (Preferred)

- 500 - 5,000
- 5,001 - 10,000
- Greater than 10,000

# Change in Trip Generation

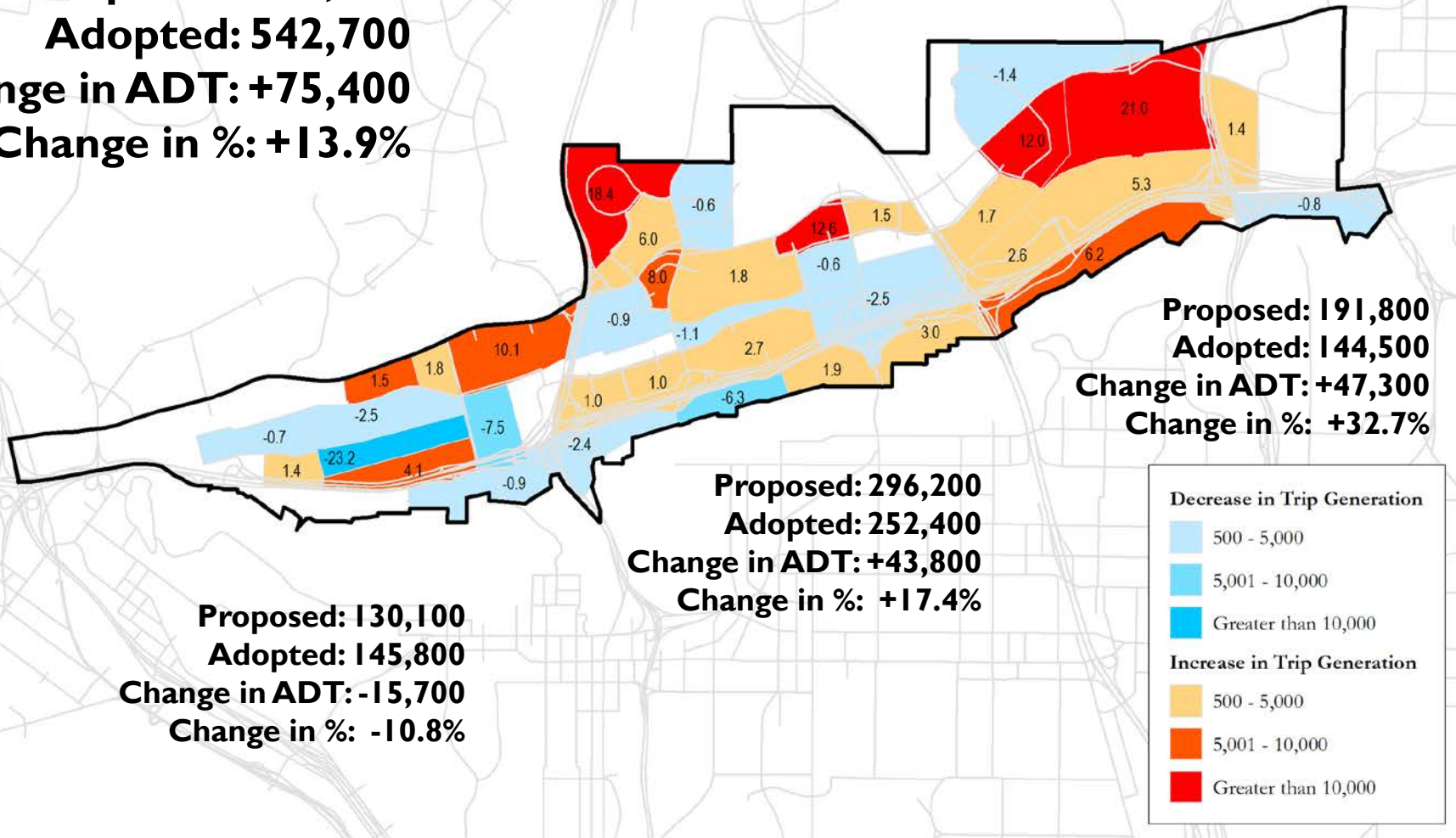
## *Proposed Plan vs. Adopted Plan*

**Proposed: 618,100**

**Adopted: 542,700**

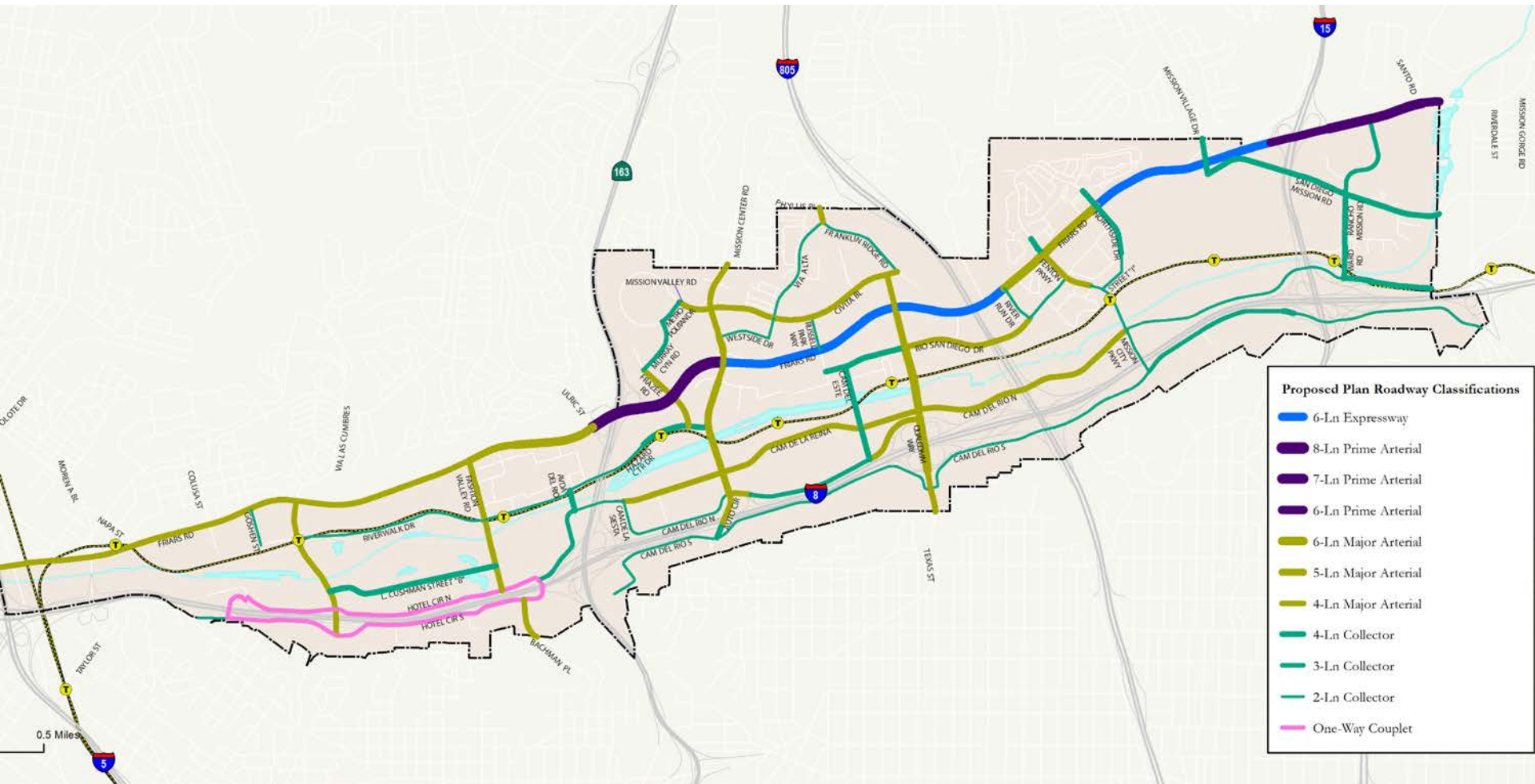
**Change in ADT: +75,400**

**Change in %: +13.9%**



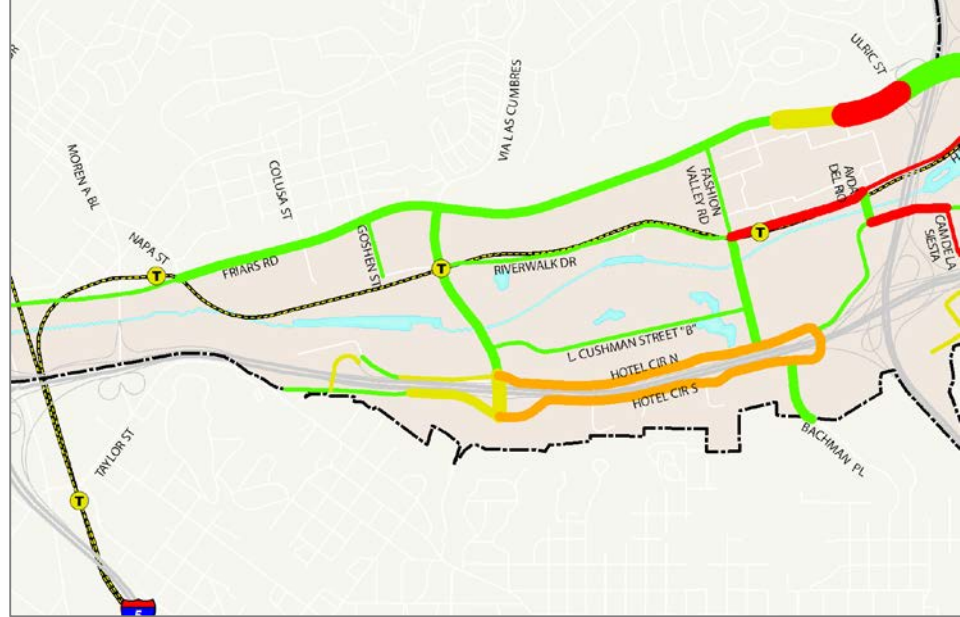


# Proposed Roadway Classifications

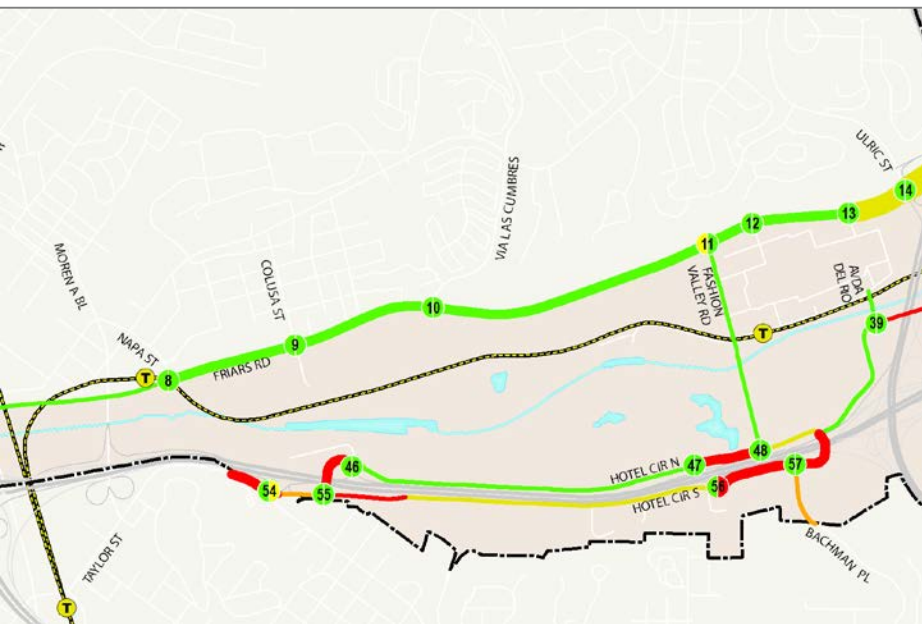


# Western MV

## Community Boundary to SR-163



**Proposed Plan**



**Existing (2015)**



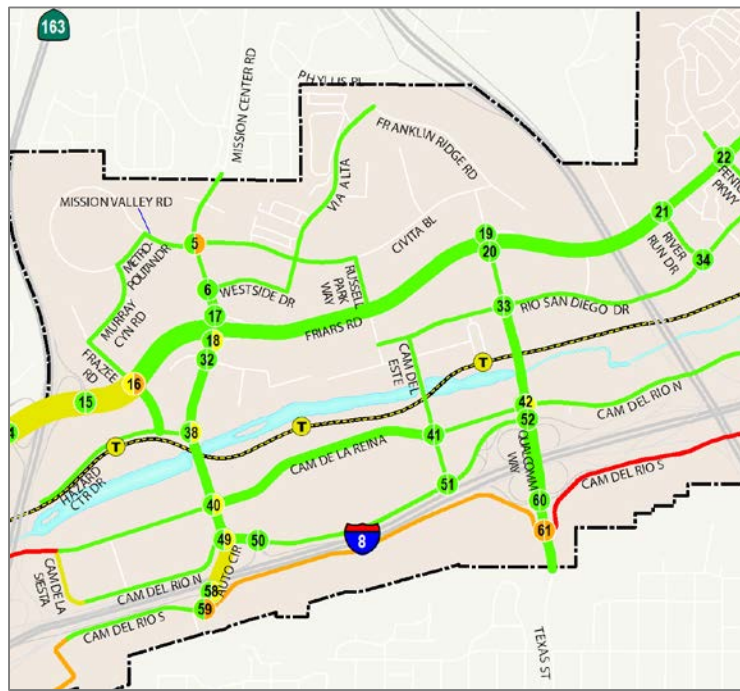
**Adopted Plan**



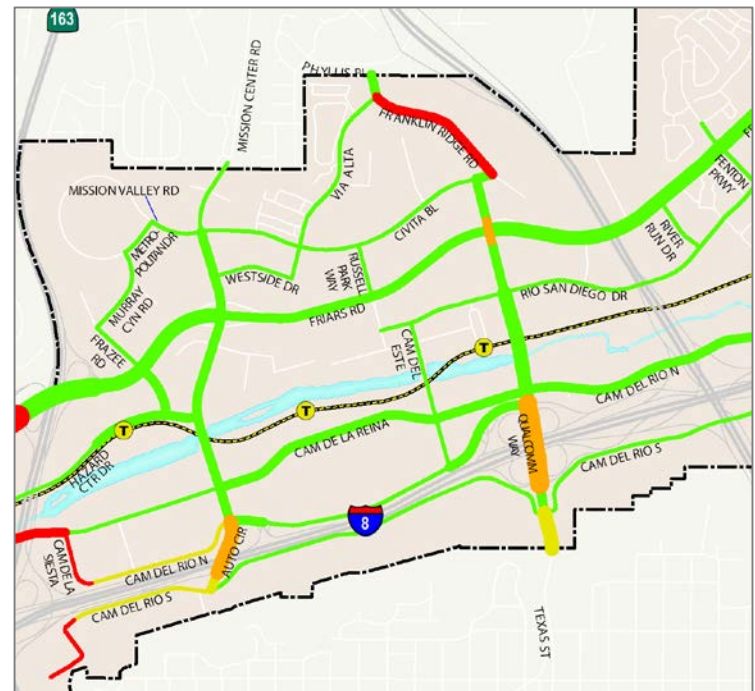
# Central MV

## SR-163 to I-805

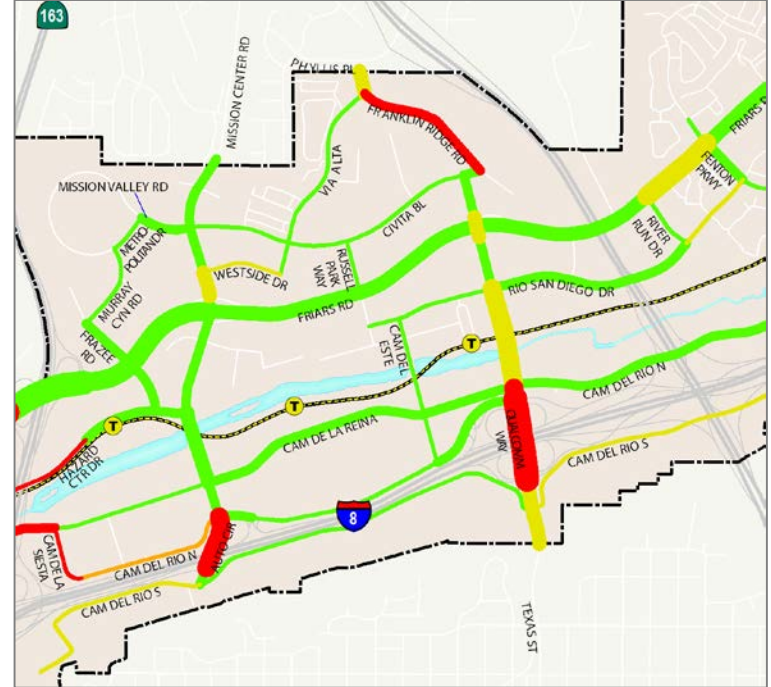
Existing (2015)



Adopted Plan



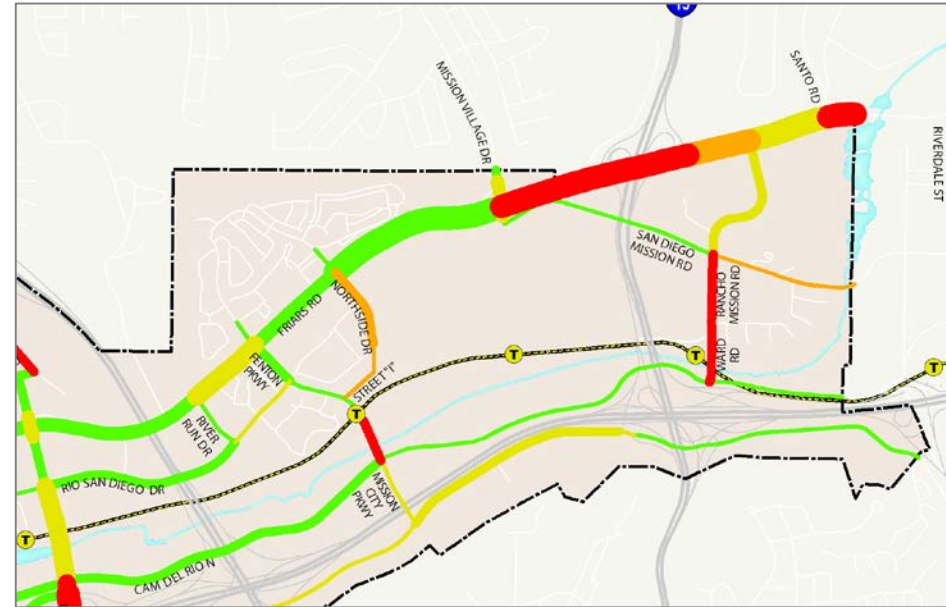
Proposed Plan





# Eastern MV

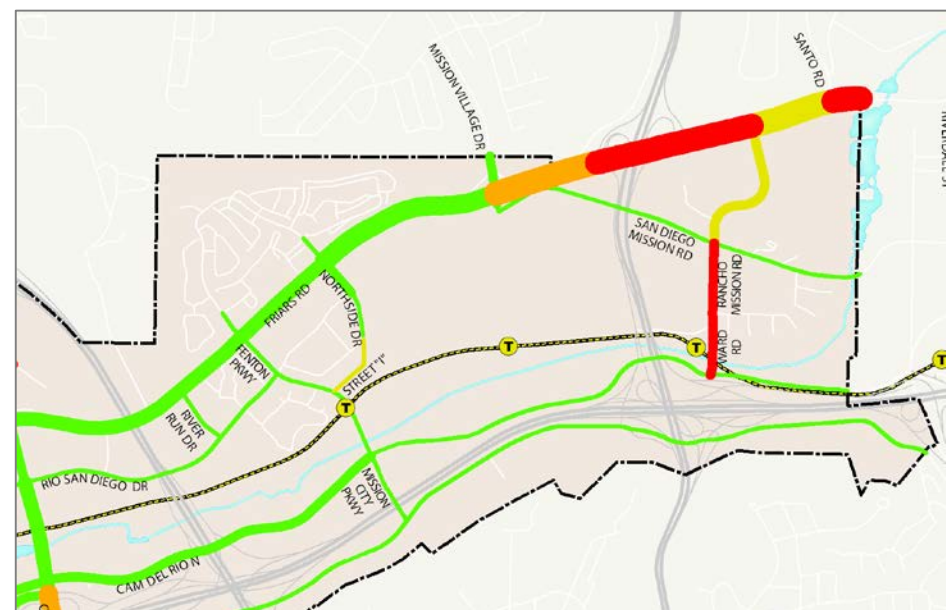
## I-805 to Community Boundary



**Proposed Plan**

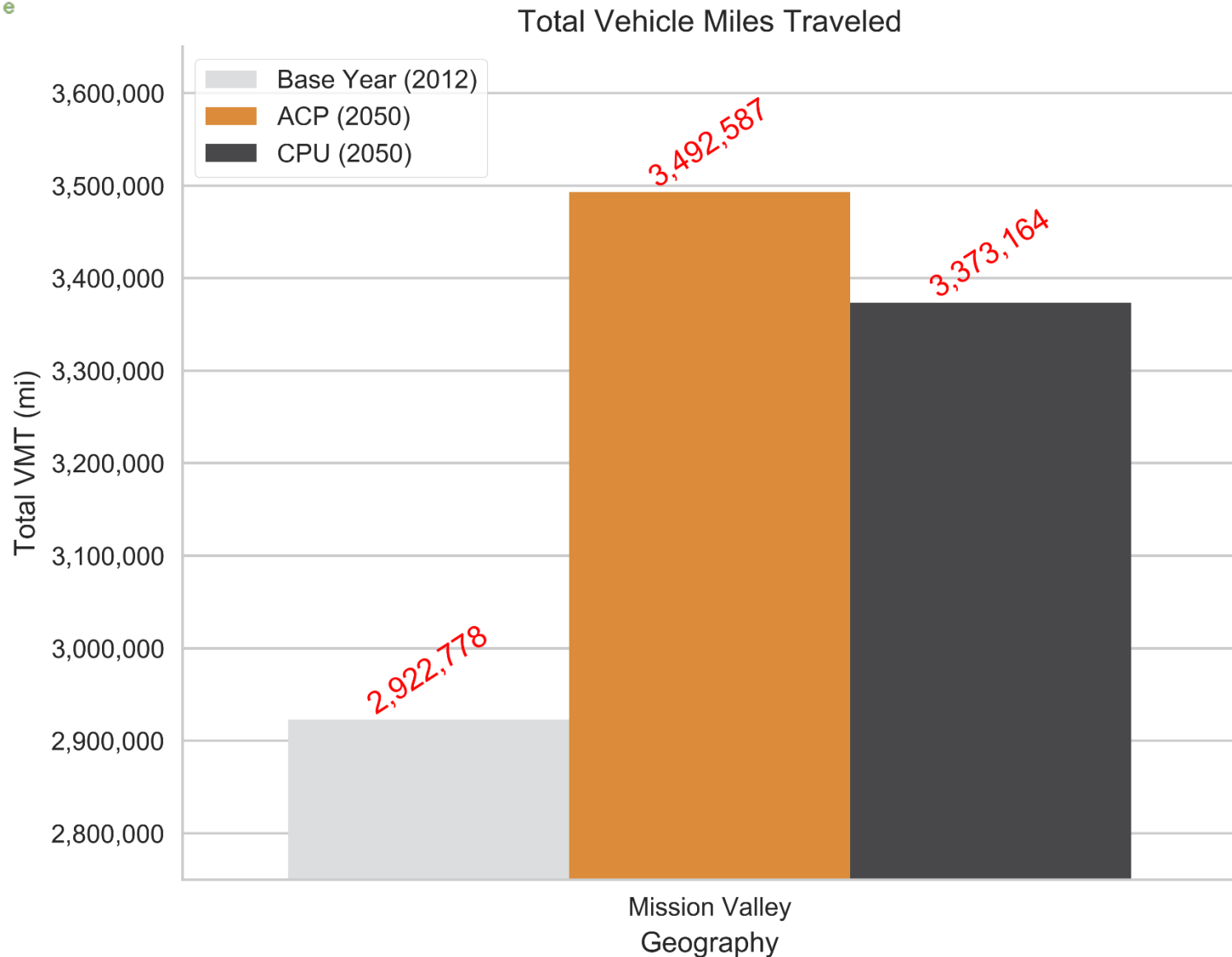


**Existing (2015)**

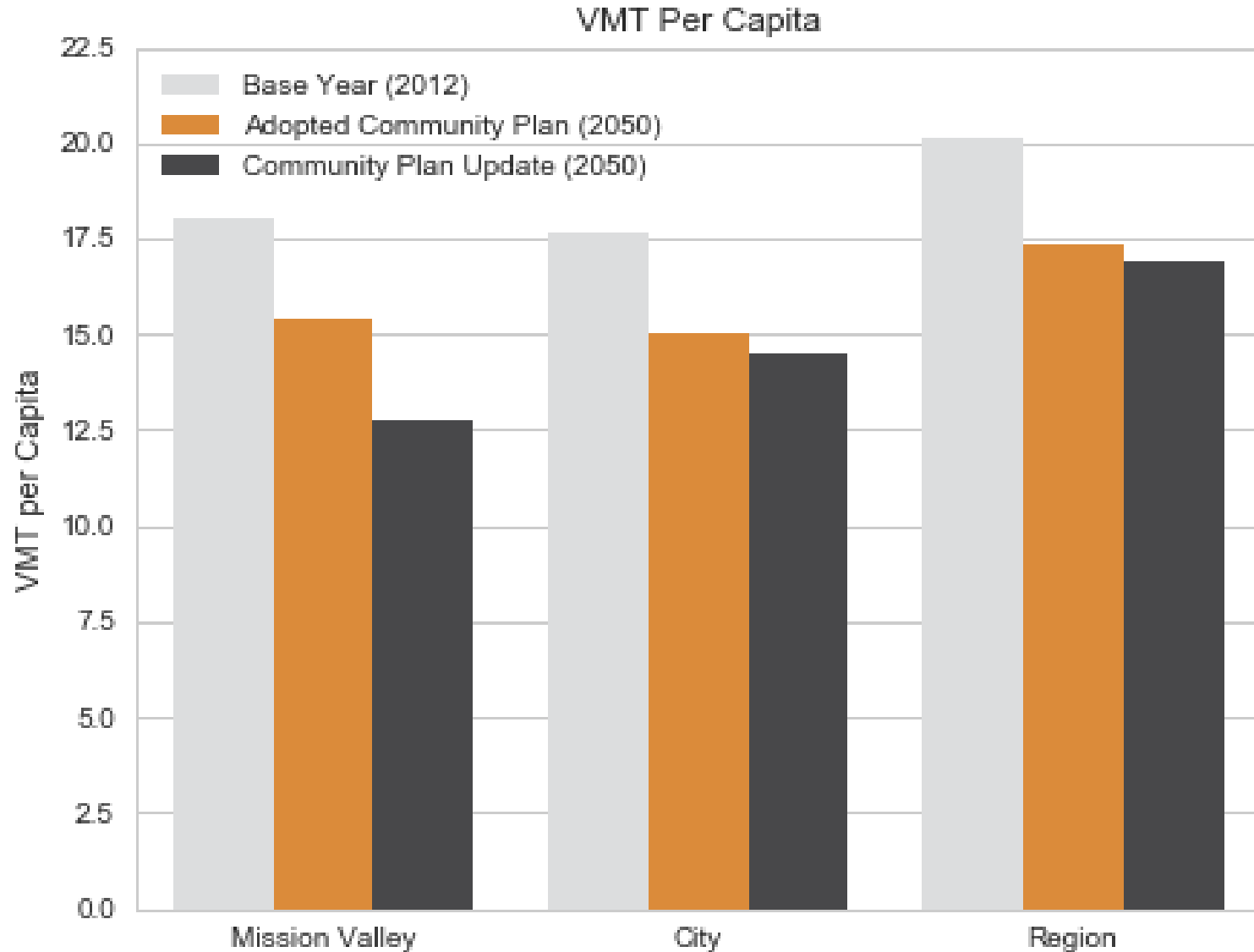


**Adopted Plan**

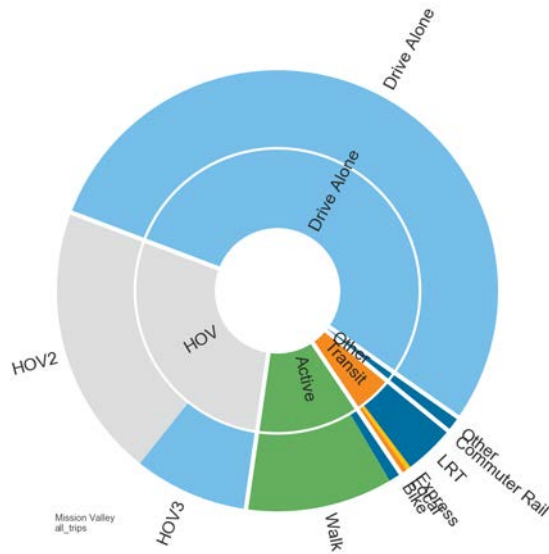
# Vehicle Miles Traveled (VMT)



# Vehicle Miles Traveled (VMT)

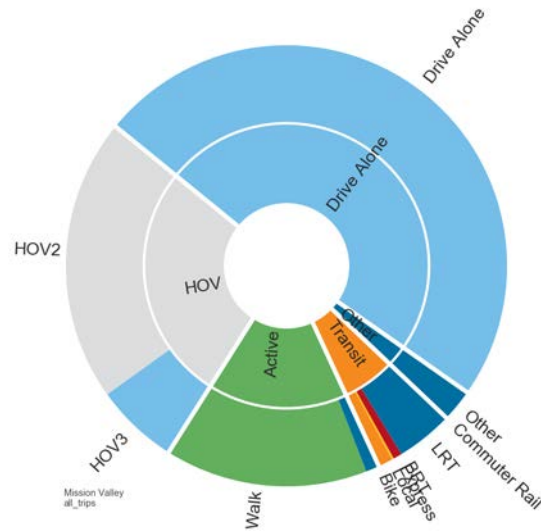


# Mode Share – All Trips



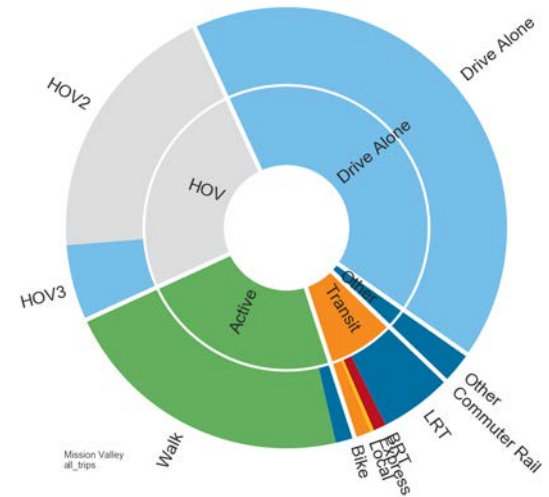
Mode	Share
Drive Alone	54.0%
HOV	28.5%
Transit	4.6%
Active	11.7%
Other	1.2%

Base Year



Mode	Share
Drive Alone	48.8%
HOV	26.9%
Transit	6.0%
Active	15.8%
Other	2.4%

Adopted Plan

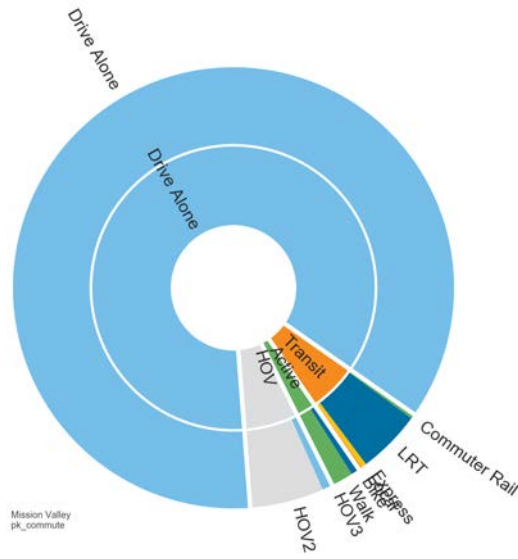


Mode	Share
Drive Alone	41.6%
HOV	25.0%
Transit	7.8%
Active	23.1%
Other	2.5%

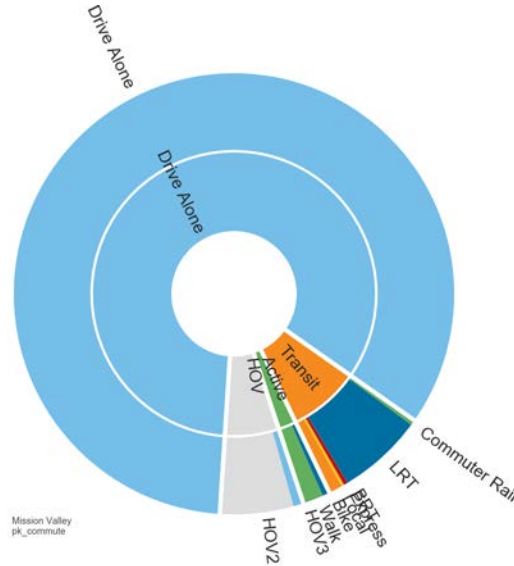
Proposed Plan



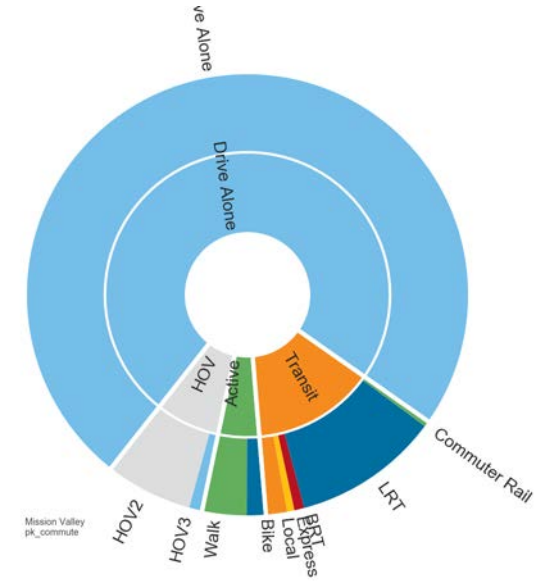
# Mode Share – Peak Period Commute Trips



Base Year



Adopted Plan



Proposed Plan

**THANK YOU!**