



Morena Corridor Specific Plan

Linda Vista Planning Group – Ad Hoc Subcommittee Mtg. 5 | CITY OF SAN DIEGO |
April 11, 2016

Tonight's Agenda

- Schedule Overview
- Draft Mobility Concepts
- Land Use - Potential areas of change
- Public Comment



Overall Specific Plan Schedule

Community Outreach

- Kick Off – March 2015
- Establishing the Context – Spring-Fall 2015
 - Existing Conditions Review (meeting 1)
 - Establishing the Vision and Guiding Principles (meeting 1 & 2)
- Preparing the Plan Framework – Winter 2016
 - Land Use Consideration Areas/Design Concepts (meeting 3 & 4)
 - Preferred Land Use and Mobility Concepts (meeting 5)
 - Urban Design Concepts / Infrastructure (meeting 6)
- Drafting the Document –Spring/Summer 2016
 - Draft Specific Plan
 - Draft Environmental Impact Report (EIR)
- Public Review Draft Specific Plan and EIR – Fall 2016
- Approval Process – Spring/Summer 2017
 - Final Draft Specific Plan and EIR
 - Public Hearings



Linda Vista-Identified Vision Statement

- Has mixed residential/commercial uses;
- Is walkable;
- Retains current height limits;
- Provides greater mobility and no worsening traffic;
- Has density that is compatible with existing neighborhoods;
- Quality design that complements the existing unique neighborhood character;
- Provides infrastructure and parks for any increases in density; and
- Retains jobs.



Opportunities

- Improve Mobility
 - Relieve congested roadways
 - Design a grid network to reduce confusion and improve safety
 - Increase bike and pedestrian safety
- Maintain and expand employment – Attract neighborhood-serving retail and higher wage employment
- Ensure development regulations encourage existing business expansion and new business attraction



MOBILITY

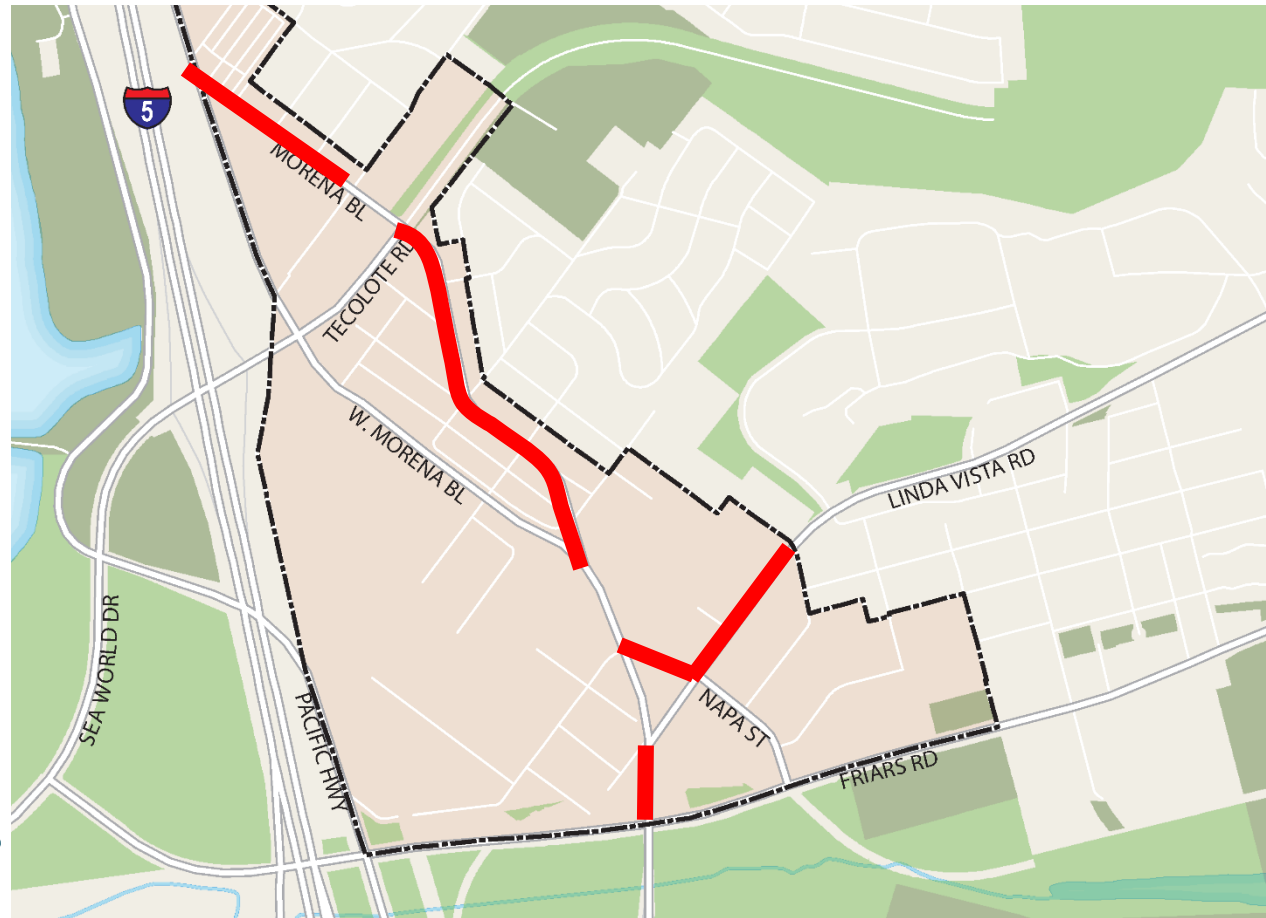
DRAFT Concepts

Linda Vista Mobility



Issues with current network

- High volume roadways and rail line act as barriers
- Non-contiguous bicycle facilities
- Missing sidewalks
- Lack of pedestrian-oriented lighting
- Congested roadways and intersections



Current roadway configuration



Proposed roadway configuration



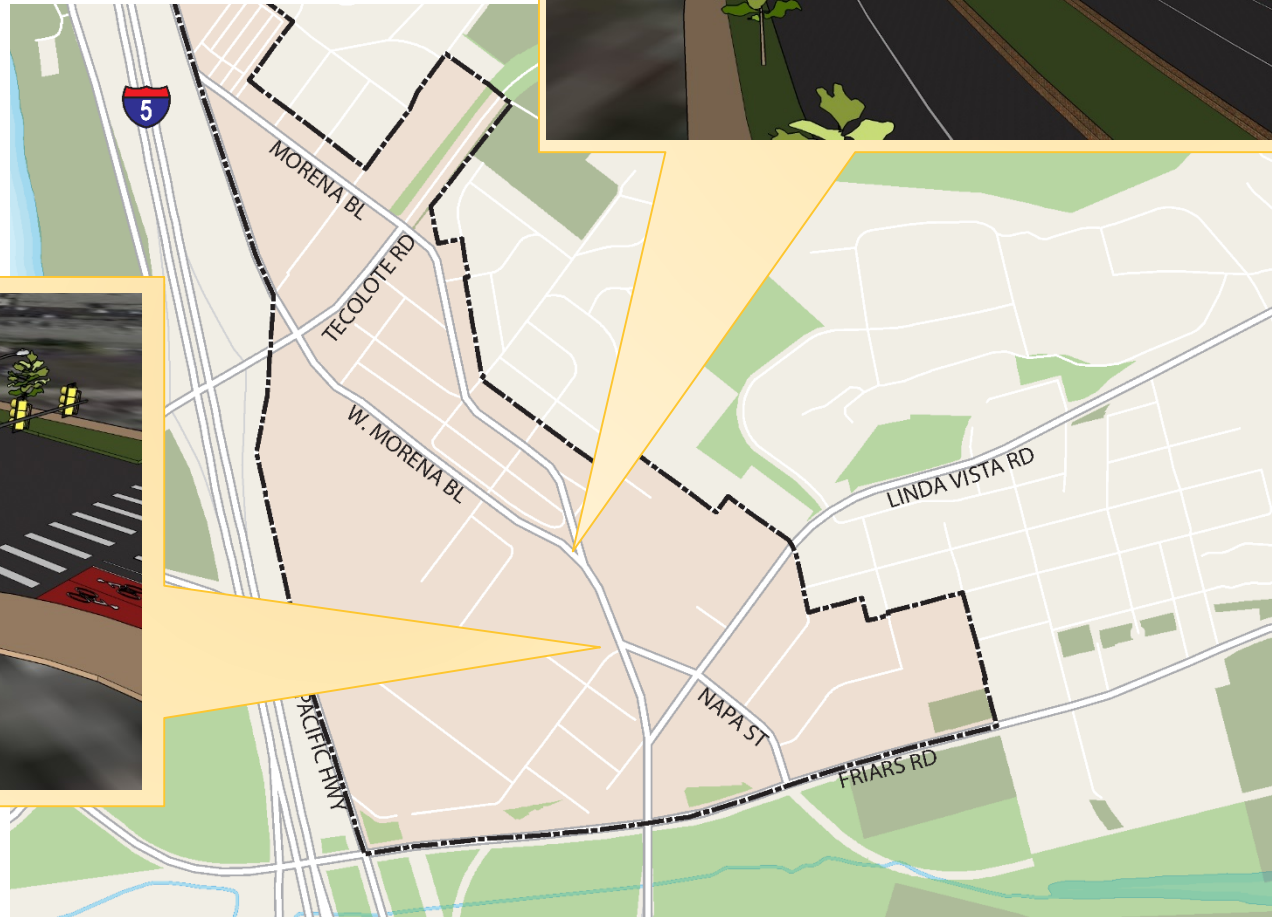
Proposed roadway configuration



Mobility Improvements



Additional Mobility Enhancements





The Proposed Roadway Network Will:

- Improve mobility for all modes (transit, vehicular, bicycle, pedestrian);
- Relieve congestion and create additional capacity in a congested area;
- Improve the bicycle network by introducing a low stress facility along a major corridor; and
- Enhance the walking environment by providing additional crossing opportunities and buffers from high-speed traffic.



LAND USE

DRAFT Land Use Plan

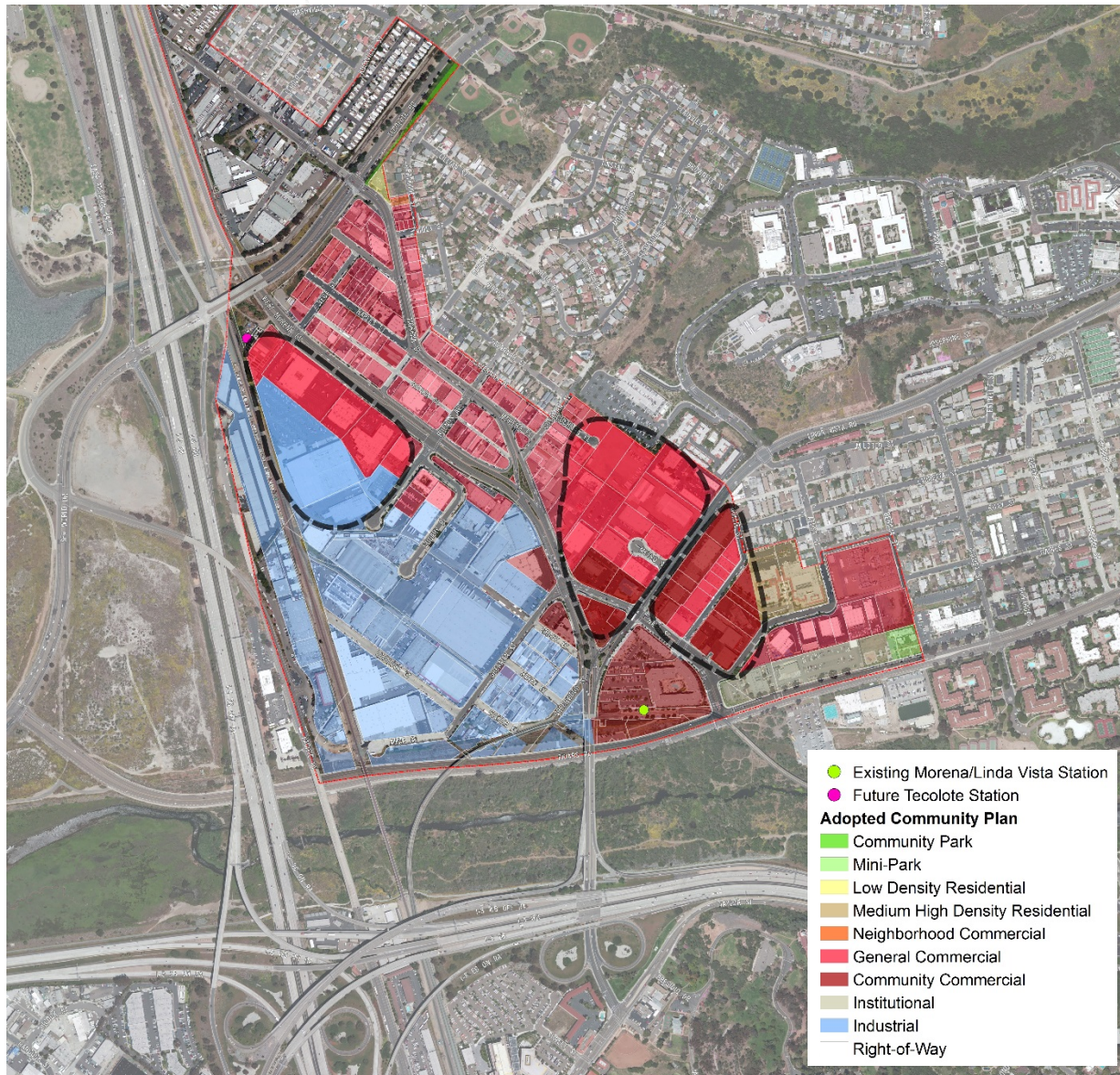


Specific Plan
Area

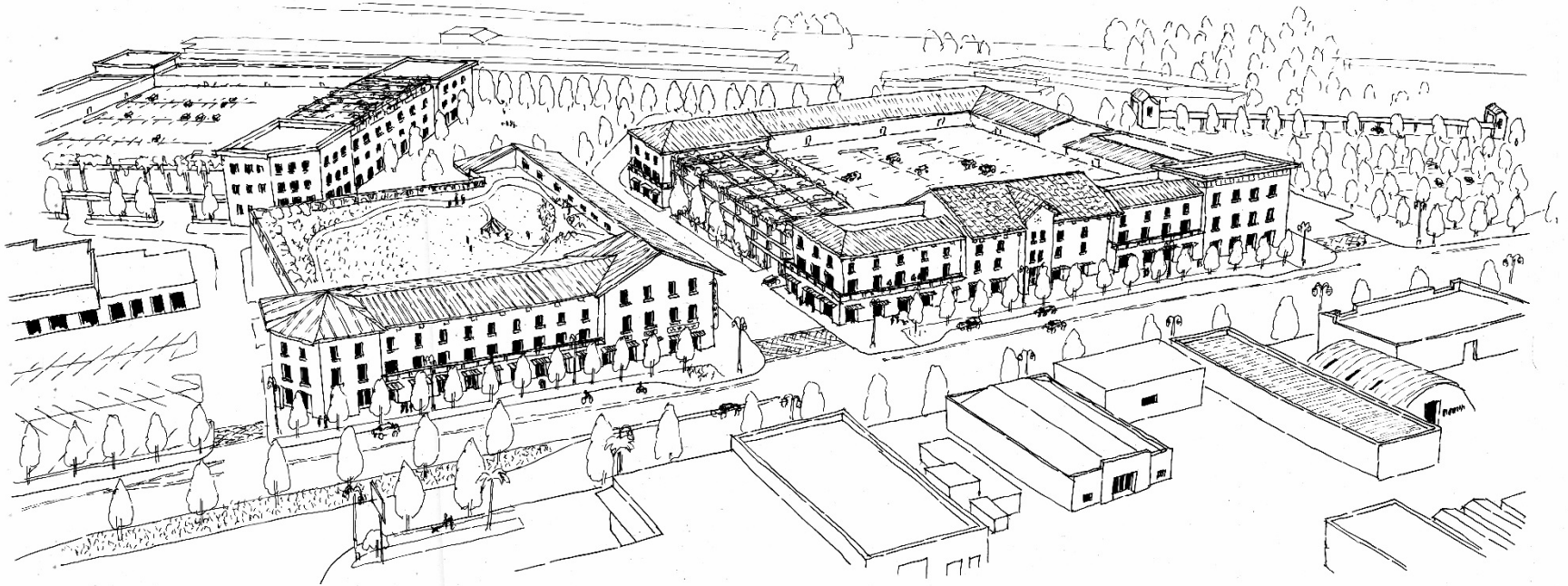
Plan Area – Linda Vista



Land Use – Potential Areas of Change



Potential Change Tecolote Station area





Public Comment

- ✓ Maximum 2 minutes
- ✓ No ceding time to others



Feedback & Questions

Next Ad-Hoc Subcommittee Meeting – May