



## Morena Conveyance South and Middle and Morena Conveyance Bike Lanes

### About Pure Water San Diego

The City of San Diego currently depends on a reliable imported water supply to deliver clean and safe drinking water to its growing communities. To address San Diego’s water demand challenges caused by a limited local supply, increased demand on imported water and climate change, the City is investing in advanced water purification to secure a high-quality, safe, local, and drought-proof water supply for the future. Upon completion, Pure Water San Diego will provide nearly half of San Diego’s water supply locally by 2035.

### Project Overview

This project includes the installation of approximately 36,170 linear feet of 48-inch wastewater force main pipeline and approximately 36,170 linear feet of 30-inch welded steel pipe brine concentrate/conveyance pipeline.

The Morena Conveyance South & Middle and Morena Conveyance Bike Lanes project will connect the Morena Pump Station at Sherman and Custer Streets in Bay Park with the Morena Pipelines Northern Alignment in University City.

The Morena Southern Alignment begins at the Morena Pump Station at Sherman Street and Custer Street and continues north on Morena Boulevard, Milton Street, Chicago Street, Jellett Street and Denver Street to Clairemont Drive. The Morena Middle Alignment begins on Clairemont Drive near Iroquois Avenue and continues north to Clairemont Mesa Boulevard (north of Clairemont Town Square), Genesee Avenue and ends near Appleton Street.

### Bike Lanes

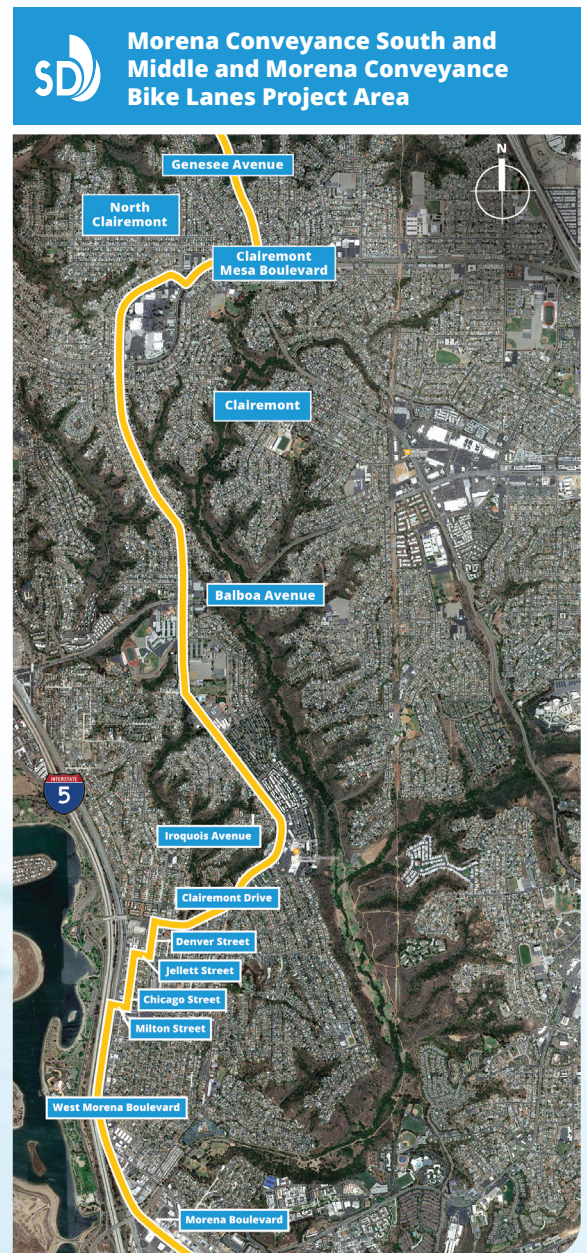
Once the pipeline has been installed and the streets have been repaired, this project will install improved bikeways along the following impacted roads within the project limits:

- Genesee Ave.
- Clairemont Mesa Blvd.
- Clairemont Dr.
- Morena Blvd.
- W. Morena Blvd.

### PROJECT CONSTRUCTION SCHEDULE



- Project Started: October 2022
- Anticipated Completion: 2025



For more project information, please visit [phase1.purewatersd.org](https://phase1.purewatersd.org) or call 833-MOR-PWSD (833-667-7973) and a project team member will return your call within one business day. Please submit your email address via [purewatersd.org](https://purewatersd.org) or email [purewatersd@sandiego.gov](mailto:purewatersd@sandiego.gov) to be added to the distribution list for electronic notifications.

## What to Expect During Construction

During construction, the project team is committed to minimizing inconveniences and impacts, and ensuring a safe environment for residents, businesses, commuters, recreational users, schools, religious centers and emergency services. Safety for the public and construction crews is important, and traffic control will facilitate the flow of traffic through work zones. **Please follow all posted signage and directions from construction crews.**

## How to Stay Informed

The City of San Diego is committed to providing San Diegans with up-to-date project information. Construction notices will be distributed to properties along the alignment before and throughout construction. Additional notices will be available on [phase1.purewatersd.org](http://phase1.purewatersd.org) and via **Pure Water San Diego** on Facebook and **@purewatersd** on Twitter. To sign up for email notifications for this project, please visit [phase1.purewater.org](http://phase1.purewater.org) and click on "Phase 1 Projects." Click "Sign Up For Email Updates" and select the "Morena Southern Pipelines Project Updates" and the "Morena Middle Pipelines Project Updates" email lists.

The City is coordinating closely with other agencies, including Metropolitan Transit System, Caltrans, San Diego Unified School District; United States Postal Service and mail/delivery companies; solid waste haulers and emergency responders, to ensure they also have up-to-date construction information.

## WHAT TO EXPECT

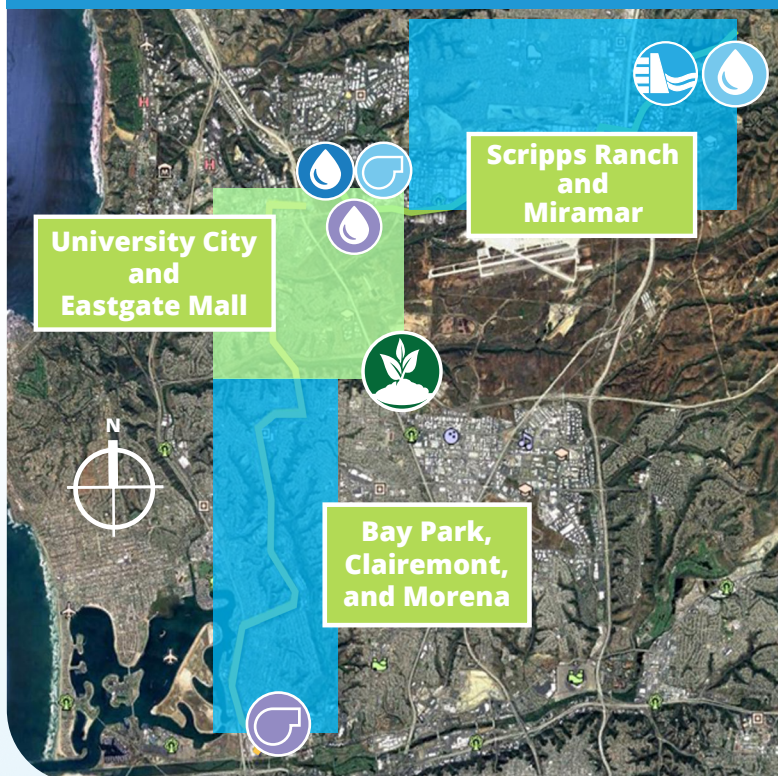
- Daytime working hours are 7:30 a.m. to 4:30 p.m. Nighttime working hours are from 9 p.m. to 5 a.m.
- Major intersections will be completed in stages so the intersections can remain open
- Access will be maintained for residents, businesses and emergency responders
- Heavy equipment and secure construction equipment staging areas
- Lane closures and traffic control measures such as signage and barriers
- Some weekend work for intersections
- Posted detours for bike lanes, sidewalks and trails
- Temporary street parking closures in some areas

## PEDESTRIAN & CYCLIST SAFETY

Stay safe near construction zones by following these tips:

- Follow posted signs and bike lane/sidewalk detours
- Cross the street only at designated crossings
- Be aware of heavy equipment
- Slow down around or avoid hazardous construction areas

## SD Phase 1 Projects & Construction Packages



### Bay Park, Clairemont, and Morena

- Morena Pump Station
- Morena Conveyance South and Middle and Morena Conveyance Bike Lanes

### University City and Eastgate Mall

- Morena Pipelines Northern Alignment & Tunnels
- North City Pure Water Facility & Pump Station
- North City Water Reclamation Plant Expansion
- NCWRP Flow Equalization Basin
- Metro Biosolids Center Improvements

### Scripps Ranch and Miramar

- North City Pure Water Pipeline, Dechlorination Facility & Subaqueous Pipeline
- Miramar Reservoir Pump Station Improvements