



Successful Habitat Restoration

Public Outreach and Education

104,564 visited the City's Tecolote and Mission Trails Visitor Centers & other Open Space Parks

GET INVOLVED:

- Coastal Cleanup Day
- Creek to Bay Cleanup
- Otay Valley Regional Park Day
- Explore Mission Trails Day

TAKE ADVANTAGE OF:

- Ranger led walks and hikes
- Nature Club for children ages 8-12
- Kids to Canyons programs



Dudleya brevifolia



The City of
SAN DIEGO

THE PLANNING DEPARTMENT

SD Planning
 Executive Complex Building
 1010 Second Ave., 12th Floor
 San Diego, CA 92101
 619-235-5200
sandiego.gov

MSCP Annual Report 2016

This information is available in alternative formats upon request.
Printed on recycled paper



The 2016 MSCP Annual Report

The City of San Diego produces annual reports on the progress of the City of San Diego Multiple Species Conservation Program (MSCP) Subarea Plan. This is the 19th MSCP Annual Report produced in accordance with Section 5.9.1 of the MSCP Plan and Section 14.2 of the City's Implementing Agreement. In addition to tracking habitat gain and losses, the MSCP Annual Report includes Multi-Habitat Planning Area (MHPA) preserve management and monitoring, restoration projects conducted within MHPA Lands, and preparation of Natural Resource Management Plans (NRMPs).

Natural Resource Management Plans

The City's Park and Recreation Department, Open Space Division, manages over 26,000 acres of open space. NRMPs are developed to ensure that protection and management of biological resources within the MHPA are consistent with MSCP requirements.

- Carmel Mountain/Del Mar Mesa NRMP
- Mission Trails Regional Park NRMP and Master Plan Update (MPU)
- Pacific Highlands Ranch NRMP
- Tecolote Canyon Natural Park NRMP
- Crest Canyon Open Space Park NRMP
- Lusardi and Lanza Canyons NRMP

96%

of required Multi-Habitat Planning Area (MHPA) is conserved or obligated to be conserved

MSCP Conservation Status through 2016

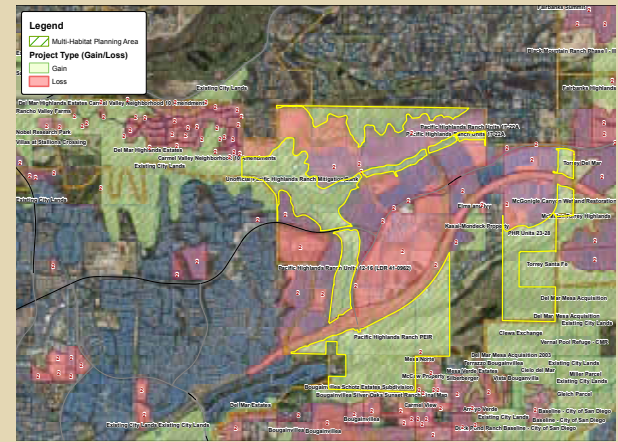
Annual Report HabiTrak Summary

Pursuant to the City's Implementing Agreement (IA), conservation of 52,012 acres is required to be preserved within the Multi-Habitat Planning Area (MHPA) prior to expiration of the City's MSCP permit in 2047. With the adoption of a subsequent amendment to the City's Brush Management Regulations in 2005, the City's conservation obligation was increased by 715 acres (to 52,727 acres) to offset an expanded Brush Management Zone 2 area.

In 2016, there was a total Habitat Gain of 781.98 acres (583.551 acres inside the MHPA and 198.43 acres outside the MHPA). The total Habitat Loss was 252.57 acres (111.19 acres were lost inside the MHPA and 140.58 acres outside the MHPA). As shown in the table below, 94.6% of the required 52,727 acres is either currently conserved or obligated to be conserved. To date, 2,706.77 acres have been conserved outside of the Multiple Habitat Planning Area (MHPA).



The MSCP Annual Report accounts for habitat gain and loss associated with development projects, conservation efforts, and acquisitions each calendar year within the City's MSCP Subarea Plan boundary. Using HABITRAK, the GIS database developed by the California Department of Fish and Wildlife, the City continues to make progressive strides in the important work of annual reporting for the 50 year MSCP permit to Wildlife Agencies, the public, and stakeholders. Staff ensures GIS quality control and collection of recorded documents certifying the legal basis of MHPA gain and loss in perpetuity. In 2016, a comprehensive GIS gain and loss update was completed for the entirety of Black Mountain Ranch and Pacific Highlands Ranch resulting in over 2,467 acres of verified, conserved MHPA.



Pacific Highlands Ranch

Habitat Conservation Accounting Model - MSCP South San Diego County From 1/1/2016 to 12/31/2016 Project Gain Status: Gain Project Loss Status: Loss



City of San Diego	Total Subarea Habitat Preserve	Conservation Target	Estimated Take	Conservation Ratio	Cumulative Conservation Inside Habitat Preserve	Max. Allowable Impacts for the Current Period	Actual Loss Inside Habitat Preserve for Current Period	+ or - Max. Allowable Impacts
Beach	115	115	0	0.00	77.14	0.00	0.00	n/a
Saltpan	136	136	0	0.00	138.99	0.00	0.00	n/a
Southern Foredunes	10	9	1	9.00	9.92	1.09	0.00	=
Southern Coastal Bluff Scrub	144	137	7	19.57	141.17	7.19	0.00	=
Coastal Sage Scrub	21,185	19,260	1,925	10.01	12,579.41	1,324.06	55.21	=
Maritime Succulent Scrub	721	694	27	25.70	704.46	27.37	0.00	*
Chaparral	11,652	10,574	1,078	9.81	8,227.51	862.70	18.40	=
Southern Maritime Chaparral	1,231	1,128	103	10.95	981.02	90.92	0.00	=
Coastal Sage-Chaparral Scrub	118	98	20	4.90	275.51	52.60	0.00	*
Grassland	5,387	5,014	373	13.44	3,507.99	272.17	21.98	=
Southern Coastal Salt Marsh	936	936	0	0.00	732.93	0.00	0.00	n/a
Freshwater Marsh	232	232	0	0.00	83.19	0.00	0.00	n/a
Riparian Forest	614	614	0	0.00	433.31	0.00	0.00	n/a
Oak Riparian Forest	469	469	0	0.00	312.12	0.00	0.00	n/a
Riparian Woodland	567	567	0	0.00	516.44	0.00	0.00	n/a
Riparian Scrub	2,749	2,749	0	0.00	1,799.43	0.00	0.00	n/a
Oak Woodland	362	332	30	11.07	181.50	17.76	0.00	=
Torrey Pine Forest	153	145	8	18.13	144.50	7.98	0.00	=
Tecate Cypress Forest	2	2	0	0.00	0.00	0.00	0.00	n/a
Eucalyptus Woodland	189	183	6	30.50	126.04	4.32	0.50	=
Open Water	3,699	3,699	0	0.00	520.60	0.00	0.00	n/a
Disturbed Wetland	583	583	0	0.00	141.37	0.00	0.00	n/a
Natural Floodchannel	295	295	0	0.00	44.61	0.00	0.00	n/a
Shallow Bays	225	225	0	0.00	76.86	0.00	0.00	n/a
Pacific Ocean/Deep Bay	2	0	2	0.00	1.95	0.00	0.00	n/a
Disturbed Land	2,763	0	2,763	0.00	1,783.93	0.00	5.71	+
Agriculture	2,097	0	2,097	0.00	1,255.07	0.00	0.00	n/a
Urban/Developed	0	0	0	0.00	894.82	0.00	10.19	+
Total Acres for Agency: City of San Diego					35,691.80		111.99	

Note: The Agriculture and Urban/Developed category is included to account for all land included within a project and habitat preserve planning area.

Report generated by the California Department of Fish and Wildlife

Phacelia



Manzanita



City of San Diego Conservation Accounting - Dec. 31, 2016

MHPA conservation requirement	Conserved acreage within the MHPA	Conserved acreage outside the MHPA	Cornerstone Lands obligated for future MHPA conservation**	Remaining MHPA conservation requirement
52,727 acres	35,691.80 acres (67.7%)	2,909.35 acres*	14,932 acres (28%)	2,103.2 acres (4.3%) ***

^ Recorded Final Map acreages are tallied to confirm discretionary requirement compliance however HABITRAK numbers are derived from GIS map interpretation the Final Maps and contain inherent skew between data layers- due to elevation changes, map scaling and other factors- for these reasons the GIS acreages are only accepted if they are equal to or slightly higher than the engineer surveyed and recorded Final Maps.

* Not included towards City's MHPA conservation requirement

**Obligated lands include: Hodges/San Pasqual, Otay Lakes, and San Vicente. (In addition, pursuant to the Cornerstone Lands Conservation Bank Agreement; Marron Valley, Lake Hodges/San Pasqual, Otay Lakes, and San Vicente lands shall be conserved via a conservation easement upon activation of each bank area. Thus far, Phase One for Marron Valley has been enacted with 2,600 acres placed in a conservation easement and 1,000 credits allocated

***Column 1 - Columns 2 & 4 = Column 5