



## THE CITY OF SAN DIEGO

**FPB POLICY  
P-16-12**

**PHOTOVOLTAIC ROOF ACCESS AND  
PATHWAYS FOR ALTERNATE VENTILATION  
CRC Sec. R331.4 Exception 2**

### ***I. PURPOSE***

The purpose of this policy is to clarify acceptable placement of photovoltaic panels for firefighter safety during ventilation of the roof.

### ***II. SCOPE***

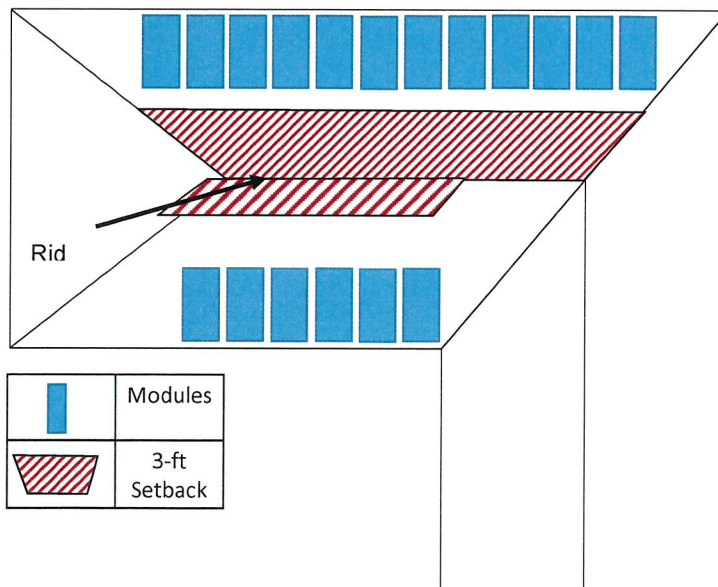
This policy shall apply to photovoltaic installations for single family homes and duplexes in the City of San Diego.

### ***III. PROCEDURES***

Application for a photovoltaic permit can be obtained from the City of San Diego, Development Services Department. The following diagrams serve as a guide to show examples of acceptable panel placement:

#### **Acceptable**

**Case 1:** Ridge clearance of 3ft on both sides.

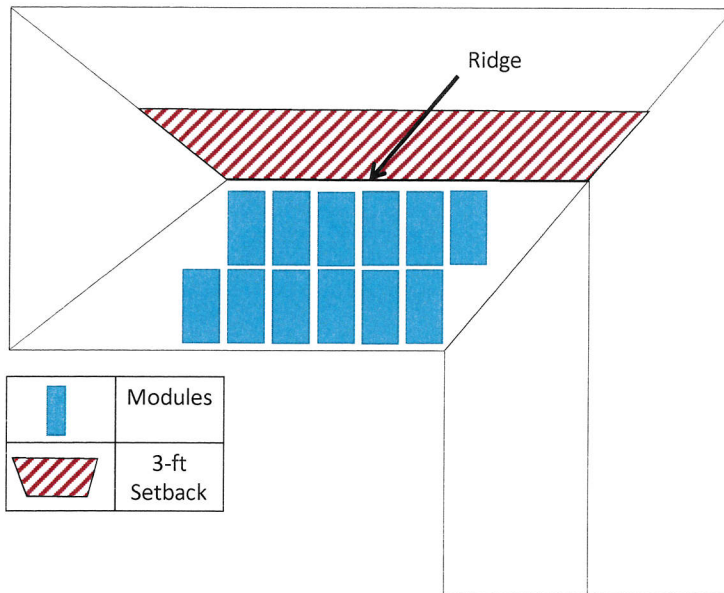


#### **Fire Prevention Bureau**

Fire-Rescue Department • 1010 Second Avenue, Suite 300 • San Diego, CA 92101-4903  
Tel (619) 533-4400 Fax 544-6806

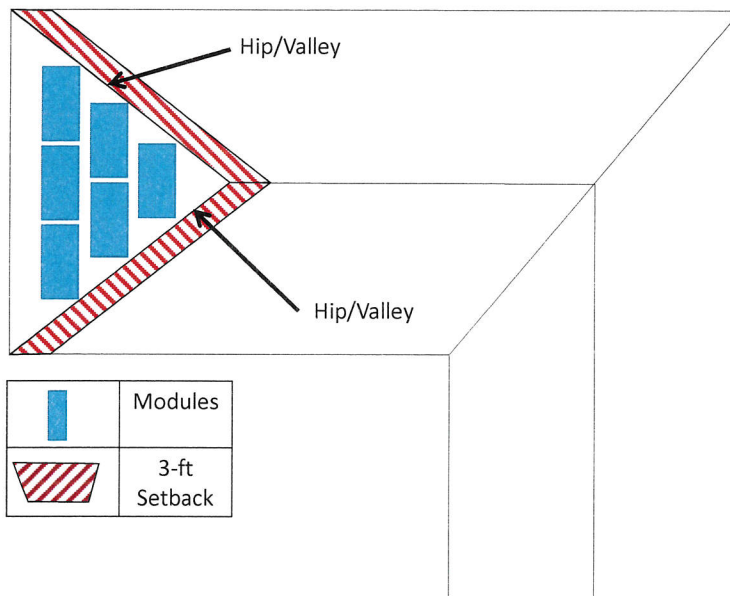
### Acceptable

**Case 2:** Ridge clearance less than 3ft on one side but other side of ridge has 3ft of clearance.



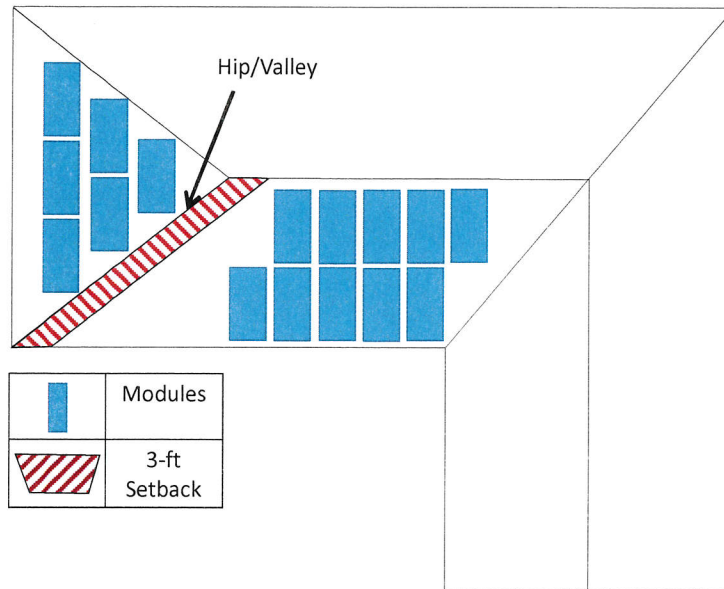
### Acceptable

**Case 3:** Hip/valley clearance is less than 1.5ft but other side of hip/valley has no panels installed.



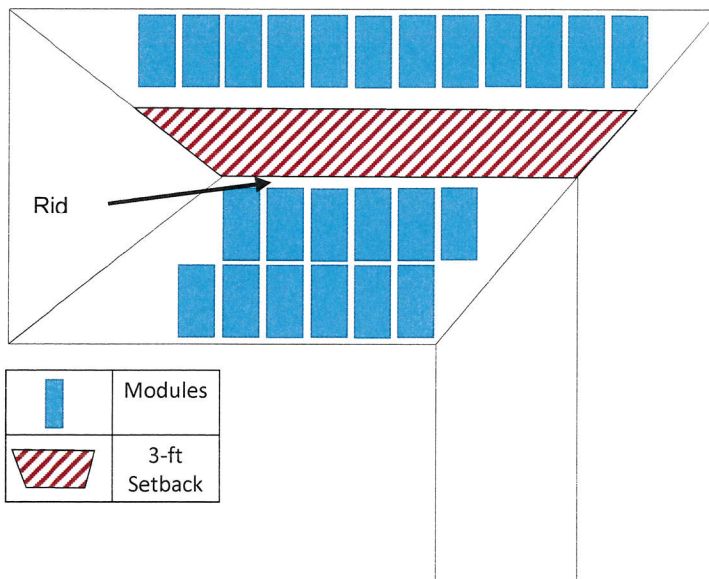
**Acceptable**

**Case 4:** Hip/valley clearance is less than 1.5ft and modules present on other side of hip/valley but one side of hip/valley has 3ft of clearance.



**Acceptable**

**Case 5:** Ridge clearance less than 3ft and modules are on the other side of ridge but other side of ridge has 3ft clearance.

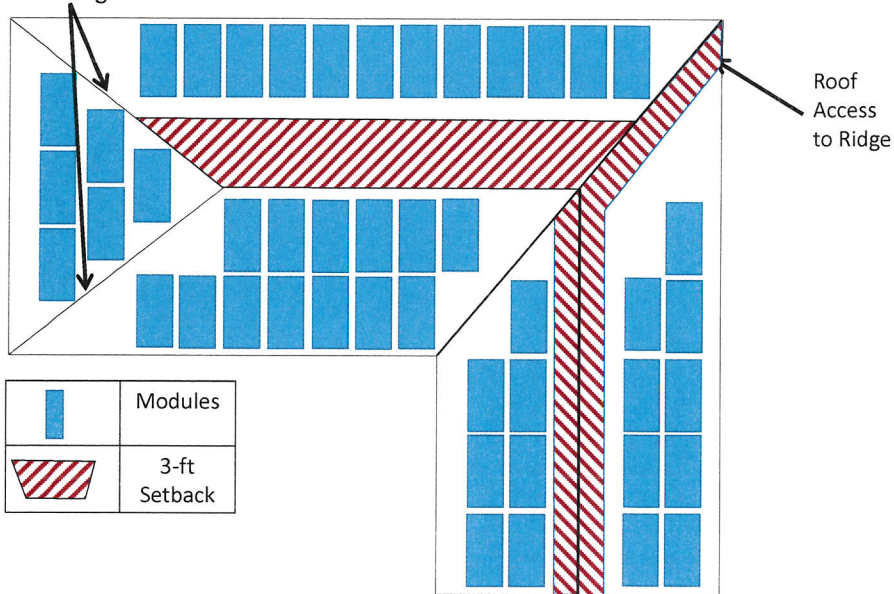


The following diagrams are not acceptable and Fire Department approval is required prior to the issuance of a construction permit.

### Unacceptable

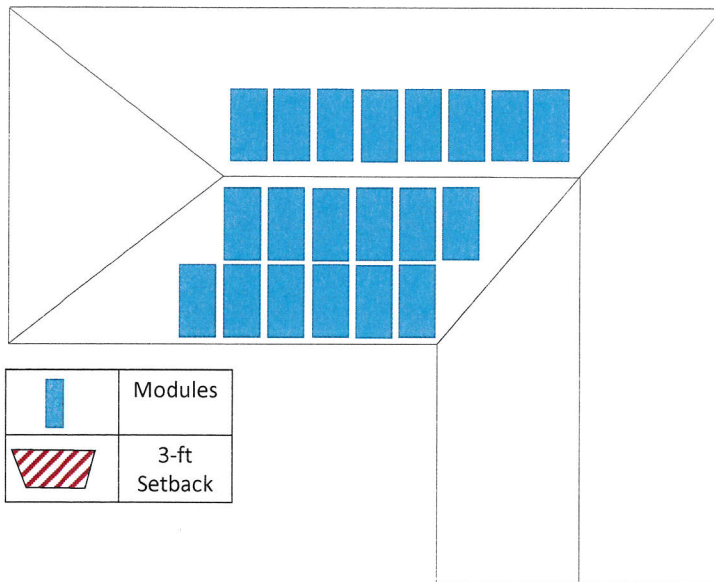
Not Enough Clearance

**Case 1:** Not enough clearance on two of the hip/valleys so not sufficient fire access.



### Unacceptable

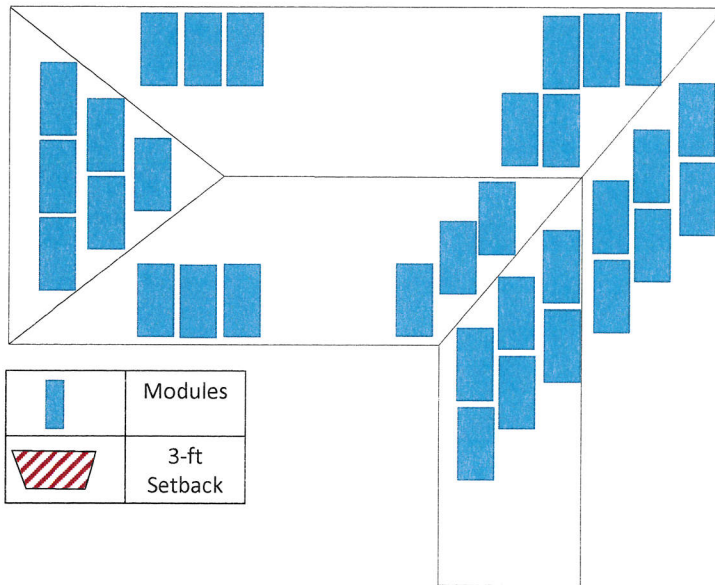
**Case 2:** Not sufficient ridge clearance.





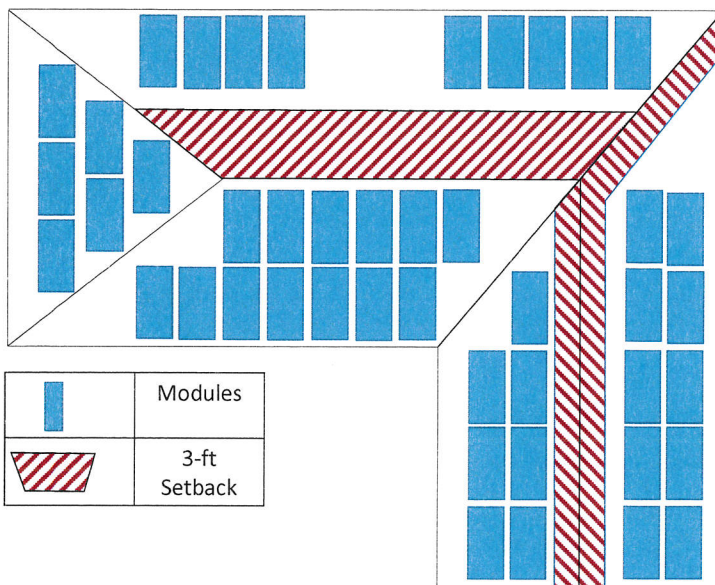
## Unacceptable

**Case 3:** Not sufficient fire access and clearances



## Unacceptable

**Case 4:** Not sufficient roof access.



- A. Plans submitted within the acceptable guidelines will be approved by the Development Services photovoltaic plan reviewer.
- B. Plans that are determined not to be acceptable will be routed to Fire Department plan check and may require corrections and resubmittal.

Promulgated by:

Date: 8/25/2016

Rev. 8-25-16