



City of San Diego Commission for Arts and Culture

PUBLIC ART COMMITTEE

AGENDA

San Diego Concourse – Silver Rooms 250-2

202 C Street, San Diego, California 92101

Friday, May 3, 2019

9:30 a.m. – 11:30 a.m.

9:30 a.m.	I.	Call to Order	Ben Meza, Chair
9:35 a.m.	II.	Non-agenda Public Comment	
9:45 a.m.	III.	Chair's Reports	
		A. Commission Business	
		B. ACTION – April 5, 2019 Minutes	
		C. Other Reports	
10:00 a.m.	IV.	ACTIONS	Charles G. Miller, Senior Public Art Manager
		A. Final Artwork Proposal for Cañon Street Pocket Park Public Art Project by Nate Page	
		B. Artist Selection Panelists for Mira Mesa Community Park Public Art Project	
10:45 a.m.	V.	Presentation – Artwork Proposal for Pure Water North City by Christian Moeller	
11:15 a.m.	VI.	Reports	
		A. Staff Reports	
		B. Committee Member Reports	
11:30 a.m.	VII.	Adjourn	

Meetings may be recorded. PUBLIC COMMENT: Any member of the public may address the Committee on any agenda item during agenda item public comment, or on any matter not presently pending or previously discussed at the Committee that is within the Committee's area of responsibility during non-agenda public comment. Each public comment speaker is limited to three (3) minutes and may be limited further by the Committee Chair if deemed necessary to allow the committee to conduct its business. Public comment speakers may allocate their time to other speakers. Public comment is non-debatable. To exercise this right, members of the public wishing to address the Committee under agenda item, or non-agenda, public comment must submit a Public Comment Request form and any presentational materials. Pursuant to open meeting laws, no discussion or action, other than a referral, shall be taken by the Committee on any issue brought forth under non-agenda public comment. The information contained in this agenda is available in alternative formats and can be requested by calling 619-236-6800 at least three (3) working days prior to the meeting in order to insure availability.



City of San Diego Commission for Arts and Culture

PUBLIC ART COMMITTEE (PAC)

MINUTES

Friday, April 5, 2019

Members Present

Ben Meza, Chair
Lara Bullock
Derrick Cartwright
Doreen Schonbrun
Tiffany Wai-Ying Beres
Janet Poutré, Ex Officio

Members Absent

Michael Brown, Vice Chair
Linda Caballero Sotelo
Larry Herzog

Staff Present

Karla Centeno
Jonathon Glus
Christine E. Jones
Stephanie Teel

-
- I. Call to Order – Commissioner Ben Meza called the City of San Diego (City) Commission for Arts and Culture’s Public Art Committee (PAC) to order at 10:12 a.m. at Civic Center Plaza, 1200 Third Avenue, Floor 9, Suite 924, San Diego, CA 92101.
- II. Non-agenda Public Comment – None
- III. Chair’s Reports
- A. Commission Business – Commissioner Ben Meza acknowledged the contributions of former PAC member Denise Rogers. Meza noted that as Rogers’ seat is now vacant, the Commission for Arts and Culture’s (Commission) Chair will be working to appoint a new community member to the committee as soon as possible. Meza also noted that at the March 22, 2019 Commission meeting that the Commission recommended to the Executive Director of the Commission not accept the donation of artwork titled *Meb: Boston Strong* from Hal W. Goforth Jr. and Florida Track Club–West into the City’s Civic Art Collection.
- B. **ACTION – March 1, 2019 Minutes** – Commissioner Ben Meza introduced the item. **Lara Bullock made a motion to approve the PAC minutes of March 1, 2019. Tiffany Wai-Ying Beres seconded the motion. The vote was 5-0-0; the motion passed.**
- Yea: Bullock, Cartwright, Herzog, Meza, and Wai-Ying Beres (5)
- Nay: (0)
- Abstention: (0)
- Recusal: (0)
- C. Other Reports – None
- IV. **ACTION: Final Artwork Proposal for Children’s Park Public Art Project by Miki Iwasaki** – Chief of Civic Art Strategies Christine E. Jones provided background on the Children’s Park public project. Jones then introduced artist Miki Iwasaki to present the final artwork proposal. Iwasaki presented

the proposal, and PAC members ask questions about the revised height of the artwork, the evolution of the artwork's three-dimensional form, the diameter of the support poles, the installation plan, the artwork's painted finish and color, and the spacing of bars on the faceted planes to deter climb-ability, the artwork's signage, and the artwork's budget. **Derrick Cartwright made a motion to recommend to the Commission that the Executive Director of the Commission accept the final artwork proposal by Miki Iwasaki in fulfillment of the City's collecting mission, collection scope and accession criteria as established in Section 5 – Collecting Mission, Section 6 – Scope of the Collection and Section 8.2 – Accession Criteria of the Commission's Department Instruction 1.00 – Collection Management Policy for the Civic Art Collection. Doreen Schonbrun seconded the motion. The vote was 5-0-0; the motion passed.**

Yea: Bullock, Cartwright, Meza, Schonbrun, and Wai-Ying Beres (5)

Nay: (0)

Abstention: (0)

Recusal: (0)

V. Reports

A. Staff Reports – Christine E. Jones introduced Karla Centeno to PAC as the Commission's new Arts and Culture Project Manager and newest staff member. Jones summarized Centeno's role in the office of the Commission and welcomed her to the team. Jones then noted that artist Janelle Iglesias is newly under contract with the City for the Pacific Highlands Ranch Branch Library public art project. Jones summarized the project, presented images of Iglesias' previous work, and provided an overview of Iglesias' artistic practice. Jones also noted that Iglesias would be present for a meet the artist event for the Pacific Highlands Ranch community on Saturday, April 13, 2019 at the Carmel Valley Recreation Center, Multipurpose Room 1.

B. Committee Member Reports – None

VI. Adjourn – Commissioner Meza adjourned the meeting at 10:45 a.m.



Commission for Arts and Culture

STAFF REPORT

DATE ISSUED: April 26, 2019

ATTENTION: Public Art Committee

SUBJECT: Final Artwork Proposal by Nate Page: Cañon Street Pocket Park

REFERENCES: 1) [Commission for Arts and Culture Department Instruction 1.00 – Collection Management Policy for the Civic Art Collection](#)
2) Final Artwork Proposal Package

STAFF CONTACT: Charles G. Miller, Senior Public Art Manager

STAFF RECOMMENDATION:

Recommend to the City of San Diego Commission for Arts and Culture (Commission) that the Executive Director of the Commission accept the final artwork proposal by Nate Page in fulfillment of the City of San Diego's (City) collecting mission, collection scope and accession criteria as established in Section 5 – Collecting Mission, Section 6 – Scope of the Collection and Section 8.2 – Accession Criteria of the Commission for Arts and Culture Department Instruction 1.00 – *Collection Management Policy for the Civic Art Collection*.

SUMMARY:

Artist Nate Page was commissioned to design, fabricate and transport permanent, site-specific artwork for Cañon Street Pocket Park and consult during installation of artwork at the site by the City. The Cañon Street Pocket Park project involves the design and construction of a new pocket park in Point Loma. KTUA Landscape Architects are the lead designers for the park to be located along Cañon Street at the west end of Avenida de Portugal in Point Loma. The artist has collaborated with KTUA Landscape Architects.

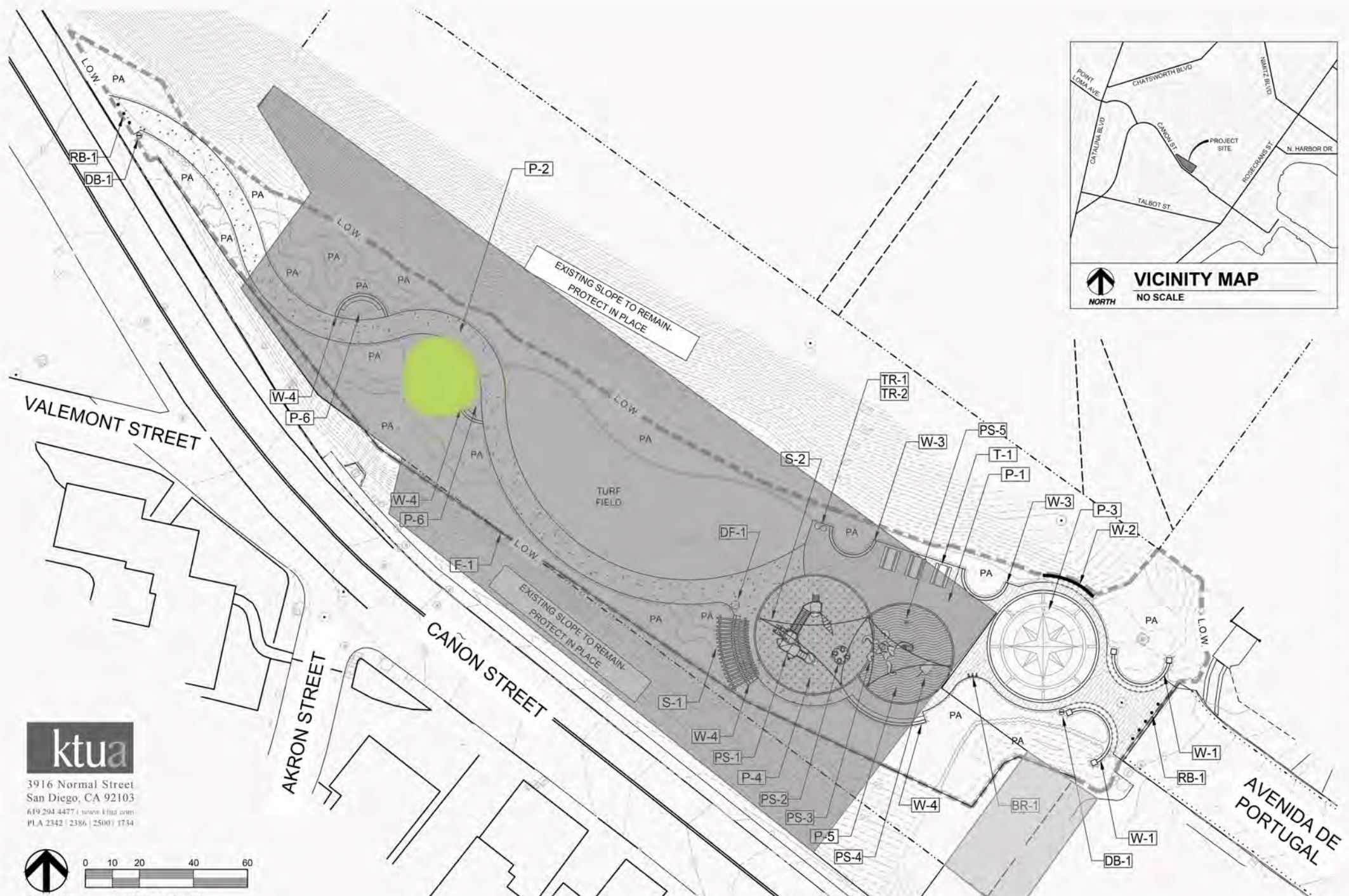
On December 1, 2017, Page presented his preliminary artwork idea to the Public Art Committee (PAC) for feedback. PAC also provided feedback on the artist's schematic artwork proposal on March 3, 2018. In addition to PAC's feedback, the final artwork proposal is informed by suggestions from the public, the City's Parks and Recreation Department, and other various City departments.

FISCAL CONSIDERATIONS:

This project is funded by the City as set forth in *City of San Diego Council Policy 900-11 – Inclusion of Public Art in Selected Capital Improvements program Projects*.

Horizon Dock
Canon Street Pocket Park
Final Proposal
Artist:
Nate Page

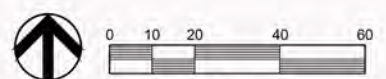


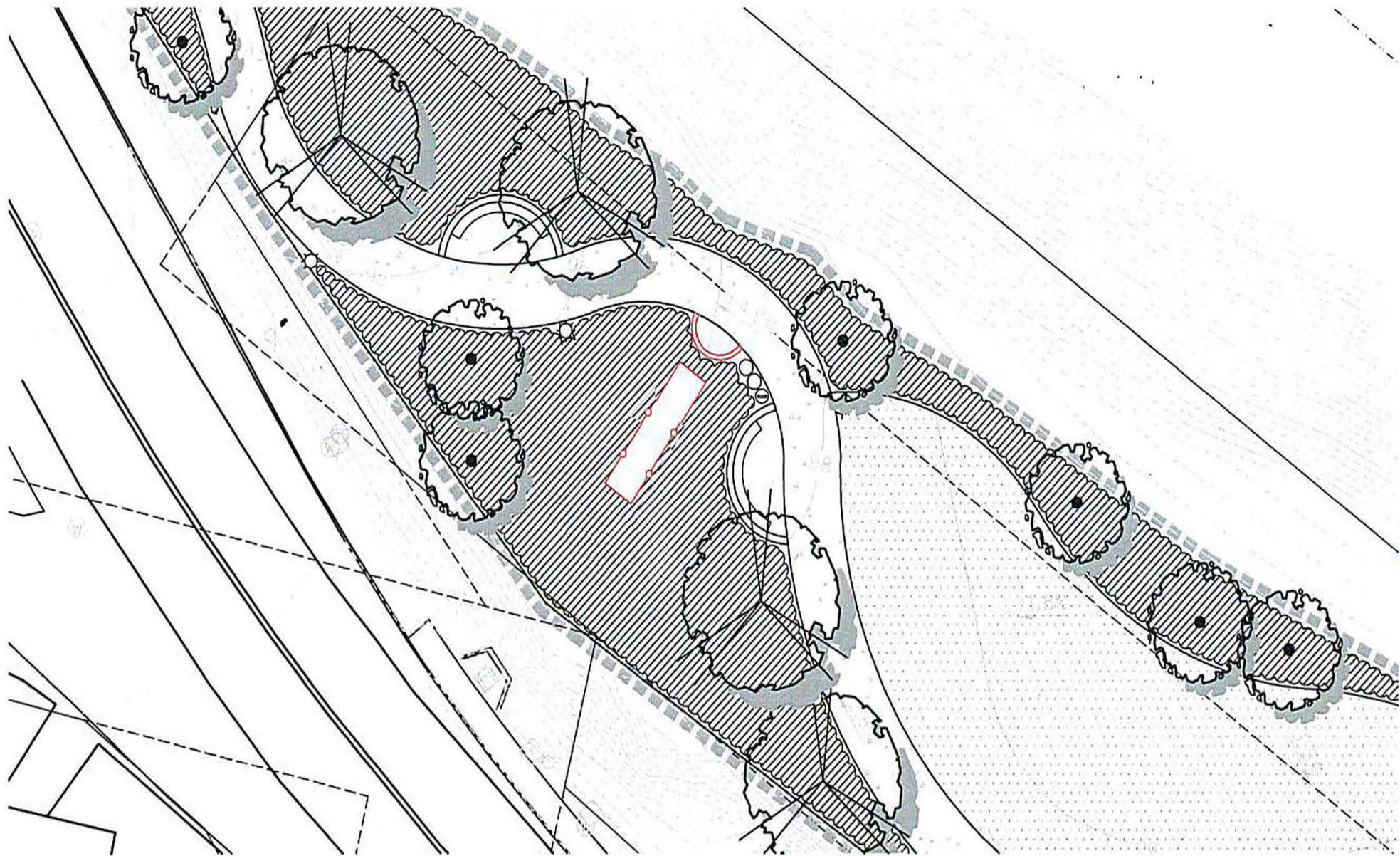


CONSTRUCTION

KEY	SYMBOL	DESCRIPTION
P-1		PAVER STONE: WOOD PLAN
P-2		STAMPED CONCRETE: SHELL
P-3		COLORLED CONCRETE: COM
P-4		BARK MULCH PLAY SURFACE
P-5		RESILIENT PLAY SURFACE
P-6		STABILIZED DECOMPOSED
W-1		MONUMENT WALL & PILASTER
W-2		HISTORICAL WALL
W-3		LOW DECORATIVE WALL
W-4		LOW BENCH SEATING WALL
T-1		PICNIC TABLE / ACCESSIBLE
TR-1		TRASH RECEPTACLE
TR-2		RECYCLING RECEPTACLE
DB-1		DOG BAG DISPENSER
RB-1		REMOVABLE BOLLARD
DF-1		DRINKING FOUNTAIN
BR-1		BIKE RACK
F-1		PERIMETER FENCE (4' HT. B)
S-1		SHADE TRELLIS
S-2		SHADE SAILS
PS-1		PLAYGROUND: CANYON CLIMBER
PS-2		PLAYGROUND: OMNI SPINNER
PS-3		PLAYGROUND: OCTOPUS CLIMBER
PS-4		PLAYGROUND: BOAT
PS-5		PLAYGROUND: BOUY SPINNER

ktua
 3916 Normal Street
 San Diego, CA 92103
 619.294.4477 | www.ktua.com
 PLA 2342 | 2386 | 2500 | 1734





PLAN VIEW



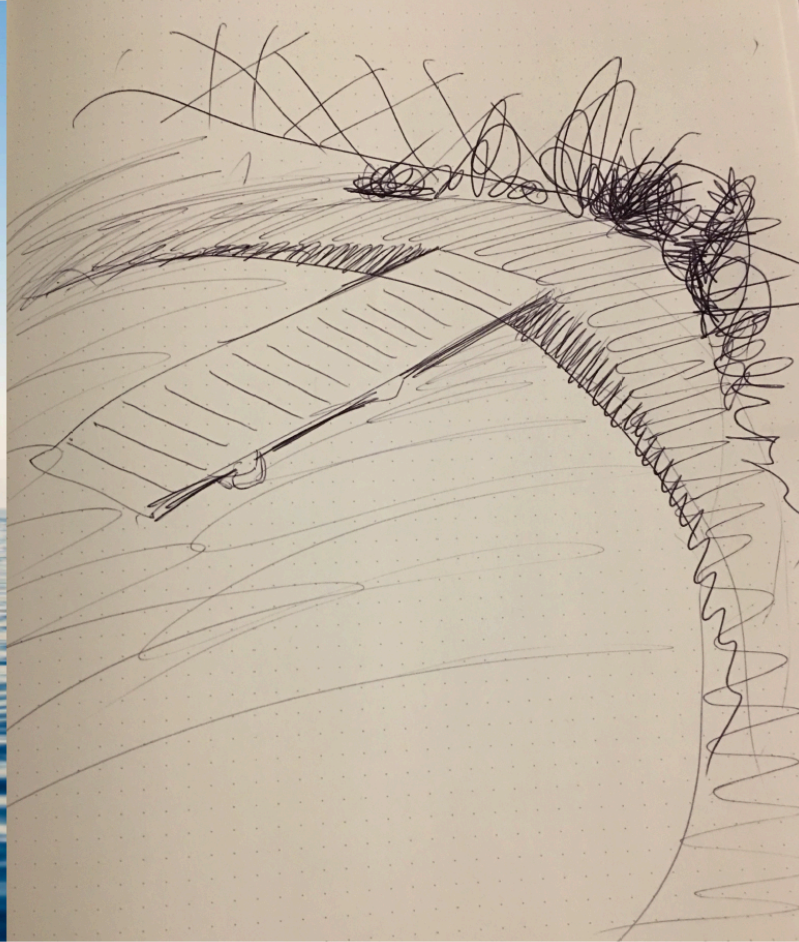
NORTH



SCALE: 1"=10'

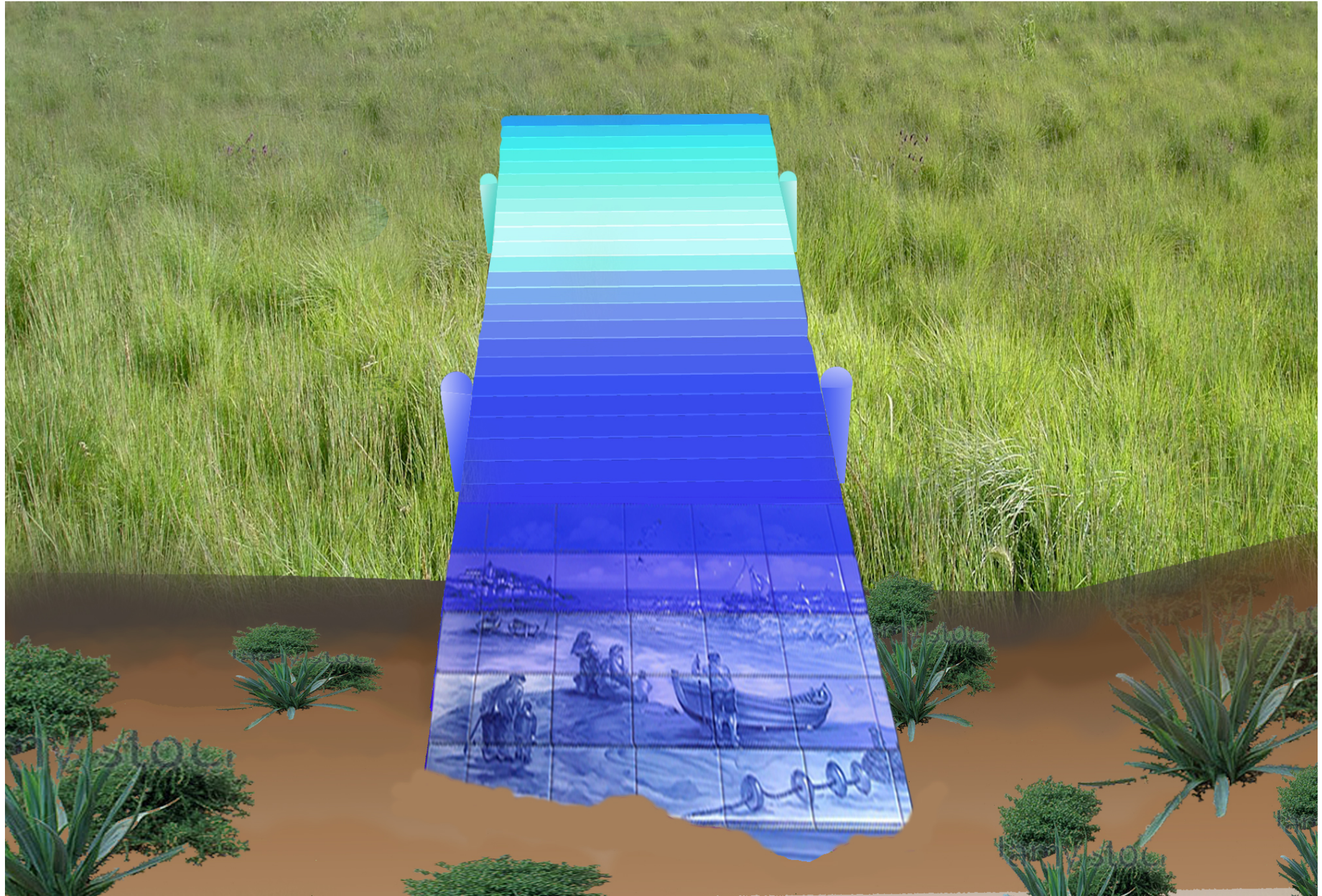
Community Research:

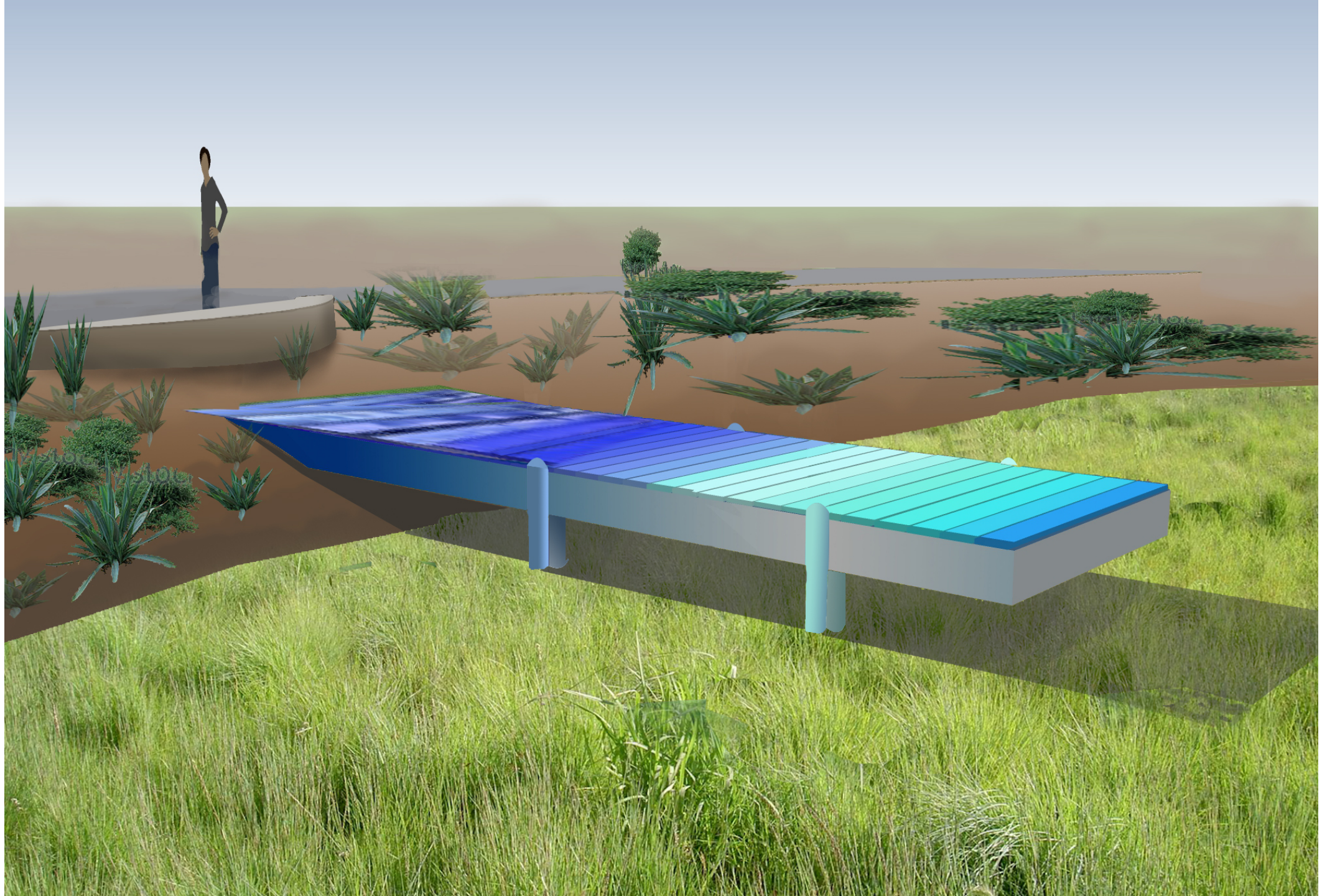
- After numerous site visits and meeting with the community and KTUA two major things stuck with me: The community's relationship to the sea and the history of the Portuguese shipping culture.
- One specific example (that came from numerous sources) is the family of fisherman or sailors waiting on the shore peering out on the horizon to catch first glimpse of the ships coming home. It was told by those who experienced this that it was a greater joy than Christmas. Kids would leave school and wait to visually connect to the incoming fathers out on the horizon. Looking out to sea is very beautiful and rich meaning for me. Even in a contemporary context, it transcends time as a metaphor for connecting with a past, community collectivity and a great desire to extend over the land/sea threshold.
- In my research on Portuguese shipping culture, I found the Azulejos tiles, which depicted similar land and sea relationships. In reference to Azulejos tradition I will use the same coloring in a similar radiating fashion as these tiles.
- Combining this long-distance viewing experience with the historical style of Azulejos tiles, Horizon Dock seeks to update and reconfigure these valued phenomena into a daily experiential sculpture that brings the distance of land and sea directly to one's feet.

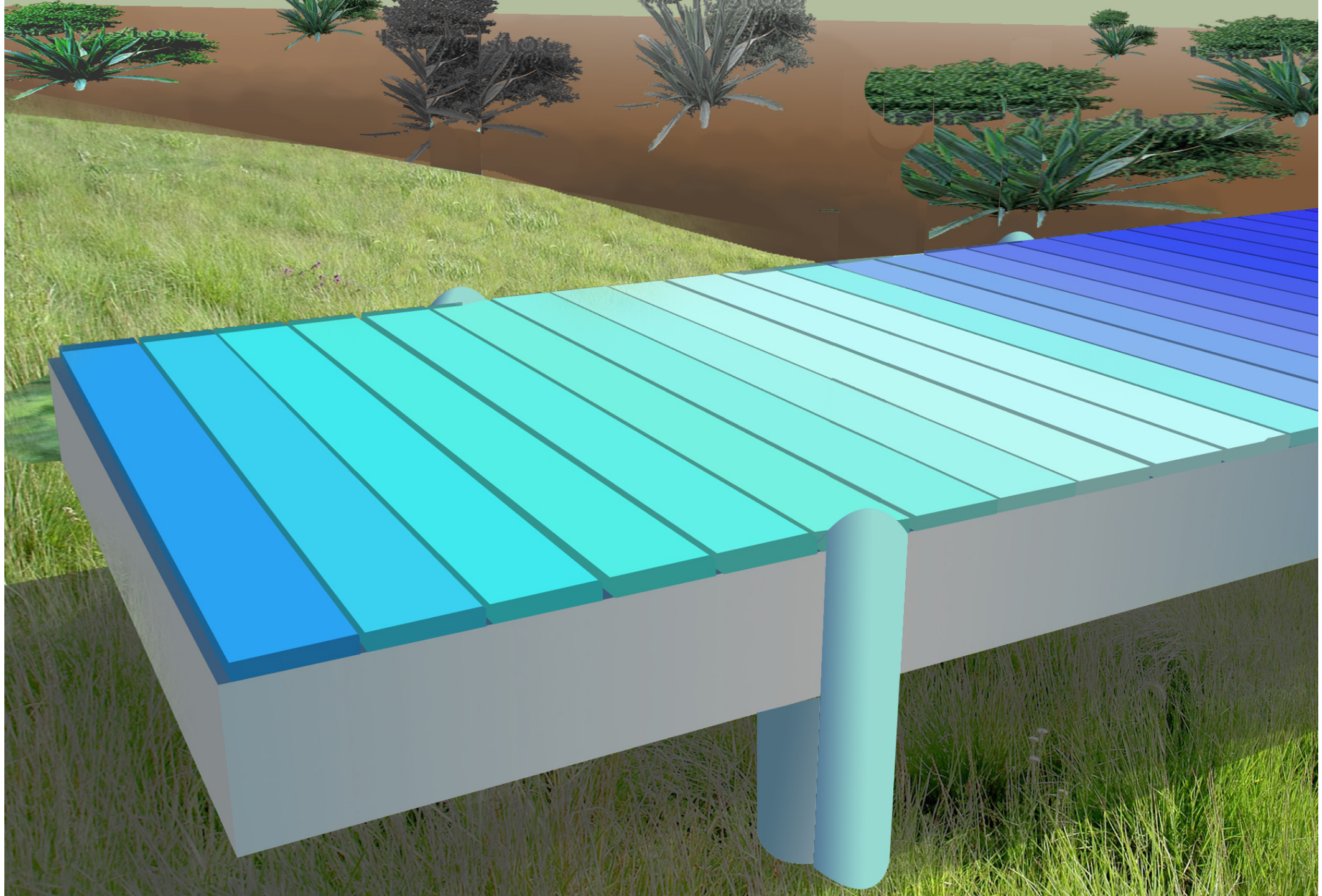


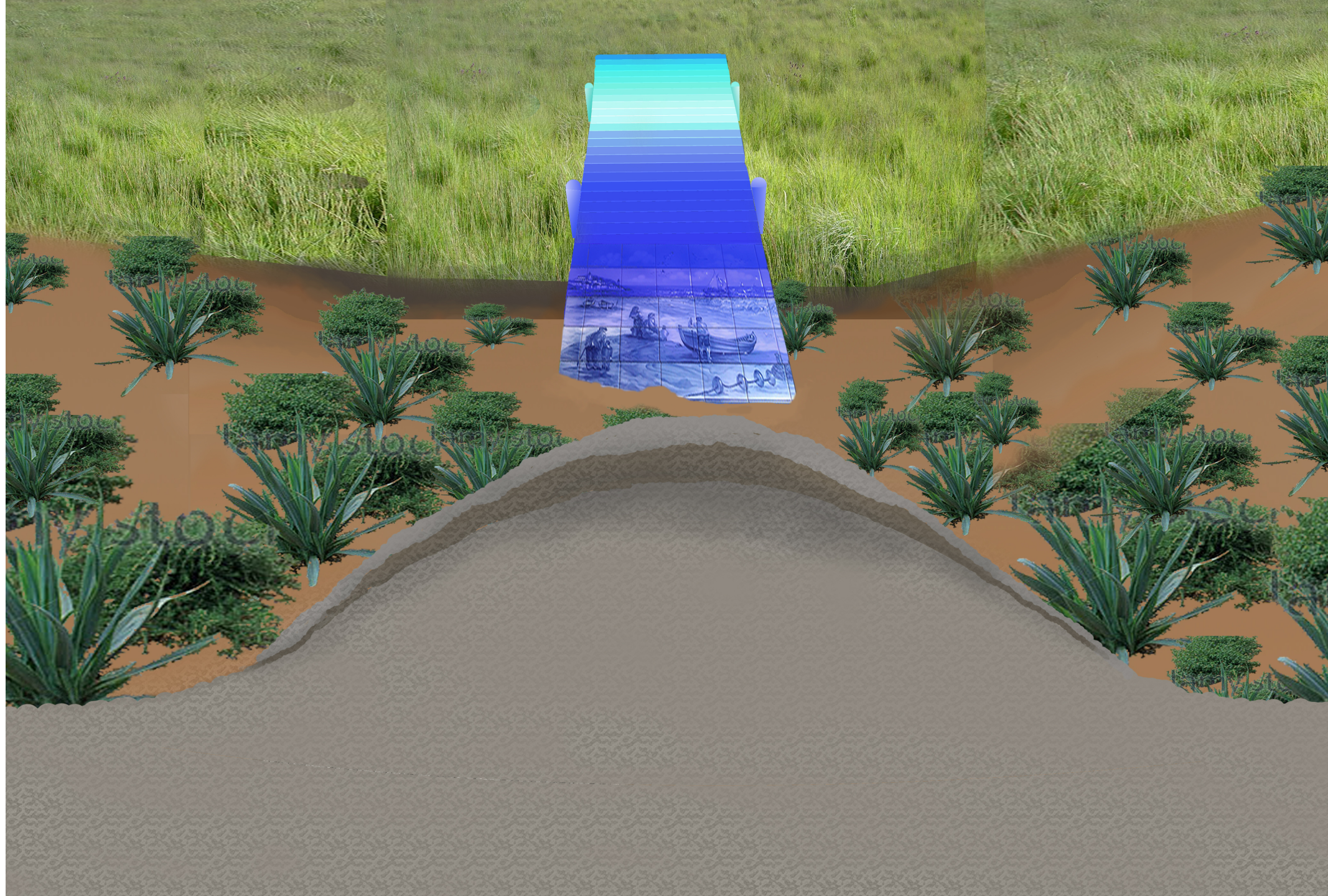
Horizon Dock:

- The project consists of one sculptural boat dock installed in secondary landscaped area of the park. The sculptural dock operates from two points of view, offering visual experiences inspired by the history of this community. The first, standing at its edge looking at the top of the dock operates as a mural that blends the theme and coloring of traditional Portuguese Azulejos tiles and elegant color fade suggesting the horizon of the sea and sky.
- The second experience operates as site specific sculpture integrated into the landscaping design to suggest that the park itself is actually the sea.
- The “land” end of the dock is integrated into the landscaping of the turf area of the park. An elevated mound of approximately 3 ft. high will be landscaped for the dock to fit into at one end—the other end will be jutting out into space. The length of the elevated mound should slope perpendicularly to the dock for better viewing access.











Viewing Area

- I intend to use their material and design to extend or bleed into a viewing area; so that it is not read as part of my work or a separate "third" element. A barrier / curb approximately 16" high can be integrated that can be transitioned and partially concealed by plantings.
- Viewing distance from curb to edge of dock will be 3' - 4'.
- As well viewing distance is addressed by scaling up the imagery of the tiles. Details may be viewed comfortably from this distance.

Material: Accoya Wood

- The wood dock option maximizes scale and immersive perceptual experience. All structural and exterior components will be made of Accoya Wood treated by acetylation, a cutting-edge patented technology, enables it to [resist rot](#), defy the elements and stay strong for decades. Guaranteed for 50 years above ground and 25 years in ground or freshwater.
- Coated with 100% Acrylic Exterior Enamel and Clear Coat. Installed with concrete footing.
- Sides of slats will be finished as the top of slats.
- Hardware will not be visible. Each slat will have 4- 90 Angle corner ties made of either galvanized hot dipped steel or stainless steel, fastened with Silicon bronze marine grade screws.
- California Field Sledge Grass will be planted in the “sea” area.

Dimensions:

- Total Dimension 20' L x 5' W x 28" H.
- Elevation of platform is 28" total. Slats are 1.5", frame is 8.5", clearance from ground to bottom of frame is 16".
- The total height from ground surface to top of post will be 30" and a 4" diameter . Two inches higher than the top of the slats. This is to prevent disruptive shadows from invading the mural surface of the dock

Lighting may be a single inset rectangular Spot Light installed in the Pedestrian curb if Ambient Light from existing park lighting is not sufficient.





Commission for Arts and Culture

STAFF REPORT

DATE ISSUED: April 26, 2019

ATTENTION: Public Art Committee

SUBJECT: Artist Selection Panelists for Mira Mesa Community Park Public Art Project

STAFF CONTACT: Charles G. Miller, Senior Public Art Manager

STAFF RECOMMENDATION:

Advise the City of San Diego Commission for Arts and Culture (Commission) to recommend the following panelists for the Mira Mesa Community Park Public Art Project: 1) one Public Art Committee member, plus one alternate member; 2) Melinda Guillen for the seat of the Visual Art/Design Professional with recommended alternates, in no particular order, to serve as two of the five ad hoc artist selection panelists.

SUMMARY:

Commission staff will administer the artist selection process related to the upcoming public art project for Mira Mesa Community Park. The artist selected for the project through the competitive process will work with the City of San Diego (City) and the design/build team to create a permanent, site-specific artwork for the park. Artwork can be incorporated into the construction project in many ways and there are a variety of possible approaches to art-making. The anticipated artist budget for the public art project is approximately \$400,000. The public art project is funded by the City as set forth in *City Council Policy 900-11 - Inclusion of Public Art in Selected Capital Improvements program Projects*.

The artist selection panel will be composed of five voting members: one member of the Commission's Public Art Committee, a visual art/design professional, a community member, a client department representative and the City's design consultant. City staff members will attend the panel meetings as non-voting advisors. The Public Art Committee is authorized to make recommendations for the appointment of two of the five panel seats for the public art project.

Panel Seat 1

Public Art Committee member - TBD

Panel Seat 2

Melinda Guillen, Independent writer and curator, PhD candidate, University of California, San Diego

Melinda Guillen is a writer and curator based in San Diego specializing in post-war American contemporary art history and feminist theory. She has contributed writing to Art21, Museum of Contemporary Art, Los Angeles, For Your Art, and the Los Angeles based performance journal, Native Strategies and recently, "Time Spent" essay published in "What's the Use? Constellations of Art, History and Knowledge" by Valiz Publishers, Amsterdam. Guillen has curated projects and exhibitions for Los Angeles Contemporary Exhibitions (LACE), RAID Projects, MAK Center for Art & Architecture, LA, University Art Gallery (UCSD) and Helmuth Projects, San Diego. She has presented her research at conferences including Open Engagement, Arts in Society, and College Art Association (CAA) annual conference and given talks on panels at Outpost Contemporary Art, Los Angeles Contemporary Exhibitions (LACE), Human Resources, LA, Museum of Contemporary Art (MOCA) Los Angeles, and San Diego Art Institute (SDAI). She is a PhD candidate in art history, theory, and criticism at the University

of California, San Diego, and holds an MA in art/curatorial practices in the public sphere from the University of Southern California.

Should the Visual Art/Design Professional be unable to serve on the panel specified above, Commission staff recommends that the following alternates be contacted in no specific order:

- Jessica McCambly, Artist and Professor at San Diego Miramar College
- Chantel Paul, Downtown Gallery Director, San Diego State University
- Hugh M. Davies, Director Emeritus, Museum of Contemporary Art San Diego
- John C. Welchman, Professor of Art History, University of California, San Diego
- Ricardo Dominguez, Artist/Associate Professor, Visual Arts Dept., University of California, San Diego
- Corey Dunlap, Artist and Arts and Culture Project Manager, Port of San Diego
- Scott B. Davis, Artist and Director of Medium Festival of Photography
- Tina Yapelli, Professor/Gallery Director, University Art Gallery, San Diego State University
- Roxana Velásquez, Maruja Baldwin Executive Director, San Diego Museum of Art
- Yvonne Wise, Chief Curator, Port of San Diego
- Lauren Lockhart, Arts Program Manager, San Diego County Regional Airport Authority
- Hector Perez, Architect and Principal at De-Arc
- Cris Scorza, Director of Education and Engagement, Museum of Contemporary Art San Diego
- Kathryn Kanjo, The David C. Copley Director and CEO, Museum of Contemporary Art San Diego
- Mathieu Gregoire, Artist and Project Manager, Stuart Collection, University of California, San Diego
- Michael Krichman, Executive Director, inSite
- Erika Torri, Executive Director, Athenaeum Music & Arts Library
- Tomoko Kuta, Deputy Director, Education and Exhibitions, New Children's Museum
- Andrew Ütt, Independent Curator and Arts Administrator
- Alessandra Moctezuma, Gallery Director/Professor San Diego Mesa College
- Wendy Maruyama, Artist and Professor Emeritus at San Diego State University
- Jill Dawsey, Curator, Museum of Contemporary Art San Diego
- David White, Artist and Independent Curator
- Mark-Elliott Lugo, Art Writer and Independent Curator
- Lissa Corona, Artist and Interim Art Teacher, La Jolla County Day
- David Flores, Community Development Director at Casa Familiar
- Lani Bautista Cabanilla, Manager, Visitor Programs, New Children's Museum
- Vicki Reed, Arts Writer, Critic and Art Historian
- Lynda Forsha, Independent Curator and Art Advisor
- Mary Beebe, Director of the Stuart Collection, University of California, San Diego
- Christine Hietbrink, Deputy Director, Chief Curator and Director of Exhibitions, Mingei International Museum
- Vallo Riberto, Gallery Director and Instructor, Southwestern College and Independent Curator
- Andrew Alcasid, Artist and Independent Exhibition Preparator
- Anita Feldman, Deputy Director for Curatorial Affairs and Education, San Diego Museum of Art
- Mario Mesquita, Artist and Education Manager, Museum of Contemporary Art San Diego
- Diana Y. Chou, Associate Curator of Asian Art, San Diego Museum of Art
- Sara Solaimani, Art Historian, Curator and Educator
- Victoria Fu, Assistant Professor, Film/Video Art, University of San Diego
- Perry Vasquez, Artist and Gallery Director and Professor of Art, Southwestern College
- Sarah Trujillo-Porter, Deputy Director, San Diego Art Institute