



City of San Diego Commission for Arts and Culture

PUBLIC ART COMMITTEE

AGENDA

San Diego Central Library, Mary Hollis Room

330 Park Blvd, San Diego, CA 92101

Hyperlink to attend the meeting at its scheduled time available [here](#)

Friday, October 13, 2023

8:30 a.m. – 9:30 a.m.

8:30 a.m.	I.	Call to Order	Fritz Friedman, Vice Chair
8:35 a.m.	II.	Non-agenda Public Comment	
8:40 a.m.	III.	Chair's Reports	
		A. Commission Business	
		B. ACTION – September 15, 2023 Minutes	
		C. Other Reports	
8:50 a.m.	IV.	ACTIONS	Lara Bullock, Civic Art Project Manager
		A. Final Artwork Proposal for Hidden Trails Park by Trevor Amery	
		B. Final Artwork Proposal for Southwest Park by Beliz Iristay	
9:20 a.m.	V.	Reports	Christine E. Jones, Chief of Civic Art Strategies
		A. Staff Reports	
		B. Committee Member Reports	
9:30 a.m.	VI.	Adjourn	

Meetings will be recorded. PUBLIC COMMENT: Any member of the public may address the Committee on any agenda item during agenda item public comment, or on any matter not presently pending or previously discussed at the Committee that is within the Committee's area of responsibility during non-agenda public comment. Each public comment speaker is limited to three (3) minutes. In addition to in-person attendance, members of the public may submit their comments via a public comment [webform](#), or they may join the meeting as a "webinar attendee" at the link provided in the [Commission or Committee meeting website](#). For members of the public wishing to address the Committee under Public Comment via the [webform](#) prior to the meeting, instructions for word limitations and deadlines will be noted on the [webform](#). As required by the Americans with Disabilities Act (ADA), requests for agenda information to be made available in alternative formats, and any requests for disability-related modifications or accommodations required to facilitate meeting participation, including requests for alternatives to observing meetings and offering public comment as noted above, may be made by contacting the City Clerk at (619) 533-4000 or <mailto:cityclerk@sandiego.gov>. The City is committed to resolving accessibility requests swiftly in order to maximize accessibility.



Commission for Arts and Culture

City of San Diego Commission for Arts and Culture

PUBLIC ART COMMITTEE (PAC)

MINUTES

Friday, September 15, 2023

Members Present

Keith Opstad, Chair
Jessica Berlanga-Taylor
Francisco Eme
Melinda Guillen (Remote)
Wayne Holtan
Abe Hughes
Imani Robinson
Denise Rogers

Members Absent

Fritz Friedman, Vice Chair
Eun Jung Park
Alessandra Moctezuma
Ann Bossler, Ex Officio

Staff Present

Lara Bullock
Charles G. Miller

-
- I. Call to Order | [View Here](#) – Commissioner Keith Opstad called the City of San Diego (City) Commission for Arts and Culture’s Public Art Committee (PAC) to order at 10:34 a.m. at the Mary Hollis Room, San Diego Central Library, 330 Park Boulevard, San Diego, California 92101.

Melinda Guillen provided justification for remote attendance

ACTION – Approval of PAC Member Melinda Guillen’s Remote Attendance – Commissioner Keith Opstad introduced the item. **Wayne Holtan made a motion to approve PAC member Melinda Guillen’s remote attendance. Commissioner Abe Hughes seconded the motion. The vote was 7-0-1; the motion passed.**

Yea: Berlanga-Taylor, Eme, Holtan, Hughes, Opstad, Robinson, and Rogers (7)

Nay: (0)

Abstention: (0)

Recusal: Guillen (1)

- II. Non-agenda Public Comment – None

- III. Chair’s Reports

- A. Commission Business – [View Here](#)

- B. **ACTION** – July 20, 2023, Minutes | [View Here](#) – Commissioner Keith Opstad introduced the item. **Commissioner Imani Robinson made a motion to approve the PAC minutes of July 20, 2023. Wayne Holtan seconded the motion. The vote was 8-0-0; the motion passed.**

Yea: Berlanga-Taylor, Eme, Guillen, Holtan, Hughes, Opstad, Robinson, and Rogers (8)

Nay: (0)

Abstention: (0)

Recusal: (0)

C. Other Reports – None

V. Presentations

A. Schematic Artwork Proposal for Hidden Trails Park by Trevor Amery – [View Here](#)

B. Schematic Artwork Proposal for Southwest Park by Beliz Iristay – [View Here](#)

C. Preliminary Artwork Idea for Willie Henderson Sports Complex by James Dinh – [View Here](#)

V. Reports

A. Staff Reports – [View Here](#)

B. Committee Member Reports – None

VI. Adjourn – Commissioner Opstad adjourned the meeting at 11:42 a.m.

DRAFT



Commission for Arts and Culture

STAFF REPORT

DATE ISSUED: October 12, 2023

ATTENTION: Public Art Committee

SUBJECT: Final Artwork Proposal by Trevor Amery: Hidden Trails Neighborhood Park

REFERENCES: 1) [Commission for Arts and Culture Department Instruction 1.00 – Collection Management Policy for the Civic Art Collection](#)
2) Final Artwork Proposal Package

STAFF CONTACT: Lara Bullock, Ph.D., Civic Art Project Manager

STAFF RECOMMENDATION:

Recommend to the City of San Diego Commission for Arts and Culture (Commission) that the Executive Director of the Commission accept the Final Artwork Proposal by Trevor Amery in fulfillment of the City of San Diego's (City) collecting mission, collection scope and accession criteria as established in Section 5 – Collecting Mission, Section 6 – Scope of the Collection and Section 8.2 – Accession Criteria of the Commission for Arts and Culture Department Instruction 1.00 – *Collection Management Policy for the Civic Art Collection*.

SUMMARY:

Artist Trevor Amery was commissioned to design, fabricate and transport permanent, site-specific artwork for Hidden Trails Neighborhood Park and consult during installation of artwork at the site by the City. The Southwest Park project involves the design and construction of a new park in Otay Mesa. Spurlock Landscape Architects are the lead designer for the park to be located along Parsons Landing to, primarily serving the surrounding Hidden Trails residential subdivision. The artist has collaborated closely with Spurlock Landscape Architects.

On July 20, 2023, Amery presented his preliminary artwork idea to the Public Art Committee (PAC) for feedback. PAC also provided feedback on the artist's schematic artwork proposal on September 15, 2023. In addition to PAC's feedback, the final artwork proposal is informed by suggestions from the public, the City's Parks and Recreation Department, and other various City departments.

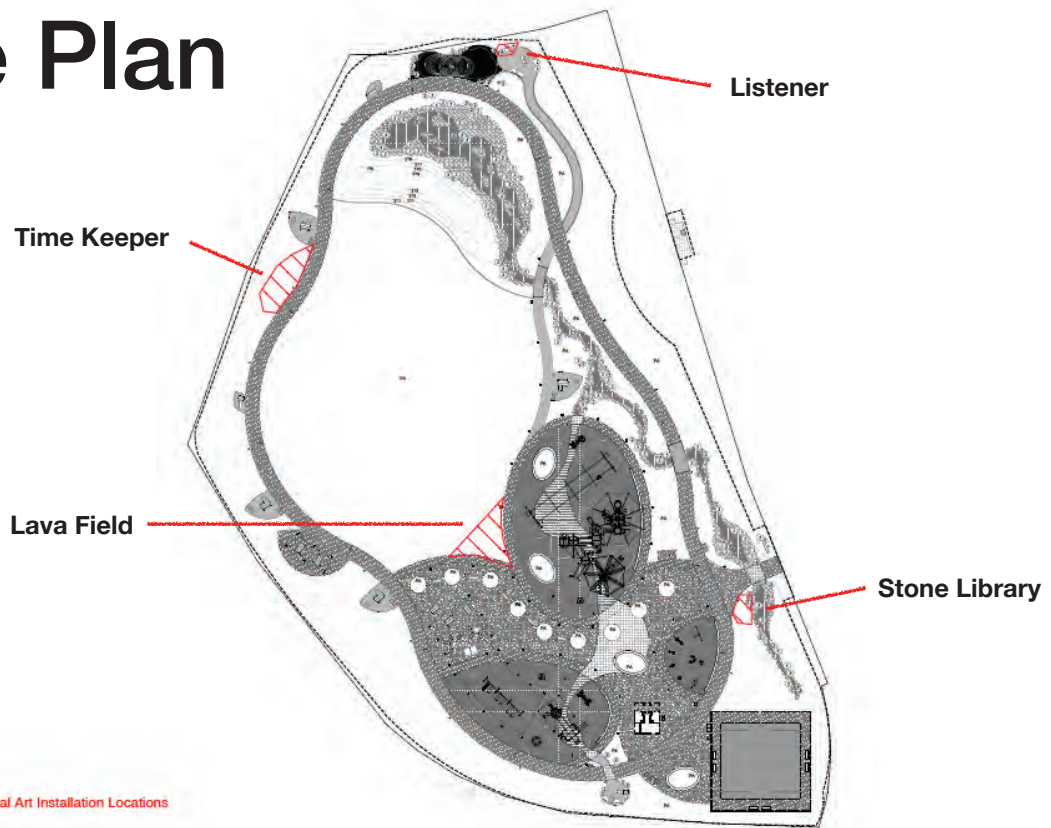
FISCAL CONSIDERATIONS:

This project is funded by the City as set forth in *City of San Diego Council Policy 900-11 – Inclusion of Public Art in Selected Capital Improvements program Projects*.

a. Site Plan



a. Site Plan



c. Documentation of Research

Site Visit:

The site is currently a field surrounded by a hillside with homes looking down upon it from the West and South banks. On the East side of the field is Parsons Landing with homes across the street. The neighborhood is composed of many single family homes, many with a view of the mountains to the East. The park is situated to become a “backyard” for the entire community.

Site Specificity:

The stone sculptures will focus on the geology of the region and the most common stones. These are granite, pegmatite, sandstone (seaside and hillside cliffs), and lava stone.

Besides the local landscape, I want the project to capture and engage the people that make up the area. I designed the *Animal Drawing Contest* and *Patch Day* specifically for this reason.

Considerations:

I want to make a series of sculptural activations that the community can take ownership of. This is their “backyard” so I do not want to create one massive artwork that overpowers the space and the aesthetics of the park. I aim to create activations that will expand the experience of the park as well as nature. I want the community to feel that this is their space; a space to be explored that can reveal treasures and hopefully inspire wonderment along the journey.

e. Artwork

Lava Field

The Stone Library

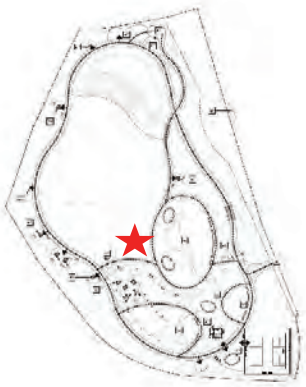
The Listener

The Time Keeper

Animal Drawing Contest & Patch Day

e. Artwork

Lava Field



f. Description



Lava Field

Content: This activation is comprised of a series of stones and shapes of acrylic of different sizes and colors for participants to jump between, avoiding the ground. It is inspired by the kid's game called 'lava', where children jump between rocks or furniture avoiding the ground or floor pretending it is lava.

Scale: *The Lava Field* will occupy about a 20' diameter space with boulders no taller than 18 inches. Individual boulders will range in size from 12" to 36" in diameter.

Location: The installation is situated in the center of the park where the playgrounds meet the grass field.

Context: The artwork draws from the geologic history of the region and the tectonic activity that has shaped it.

Component Relationships: The different types of stone (lava stone, granite, quartz, sandstone) and acrylic will coalesce to create a playful environment that is both welcoming and beautiful. The drama of the stone against the colors of the acrylic will contrast in exciting ways, drawing viewers' attention to the artwork. The acrylic boulders will have a light source next to them so they can glow at night.

e. Artwork

The Stone Library



f. Description

The Stone Library

Content:

This activation is inspired by free neighborhood libraries, but is a place for participants to place stones or objects they have found they like for others to take or enjoy. It will become a place for people to visit on their way in or out of the park.

Scale: The boulder will be about 5' in diameter.

Location: *The Stone Library* will be located near the entrance to the park.

Context: The stone will be a granite boulder resembling the boulders you find speckled atop the mountains in San Diego region, from Mount Woodson all the way down into Mexico.

Component Relationships: The niches carved in the boulder will create little spaces for precious objects. They will be there for participants to leave stones they may have found or possibly even lost objects found in the park. It is a meeting place and a sharing stone.



e. Artwork

The Listener



f. Description

The Listener

Content:

This boulder is here for you. Here to listen, keep you company, and just hang out. It will lend a sympathetic ear or a strong shoulder to lean on.

Scale: The Listener is about the height of a 6' adult sitting down and will sit at about 51" tall.

Location: The sculpture will be installed on a bench on the North side of the park overlooking the valley to the East.

Context: The bench is situated at a lookout in the park, a place for people to gather or to take some time alone.

Component Relationships: The sculpture resembles the form of a person sitting on a bench. It's limited components open the piece up to a wide range of interpretations.

e. Artwork

The Time Keepers



f. Description

The Time Keeper

Content:

The tree trunk will be free standing sculpture lining a path for viewers to walk by. It draw inspiration from my series, "Aspen Eyes" and reference dendrochronology and time. Trees capture climate history in their tree rings and often exist on a timeline much longer than our own. Some trees even drop their lower branches when growing, leaving knots that resemble eyes on the trunk. The trees are witnesses and time keepers, watching and documenting the world, season by season.

Scale: The tree trunk will be about 18-inches wide and 8' tall.

Location: It will be installed on the West side of the park along the path.

Context: It will be installed alongside real trees, mirroring their existence.

Component Relationships: The sculpture is comprised of 1 tree trunk lining the path.



e. Artwork

Animal Drawing Contest & Patch Day



f. Description

Animal Drawing Contest and Patch Day

Content:

I will hold a drawing contest for the neighborhood children, inviting them to submit drawings of their favorite local animals. The selected drawings will be converted into digital files and installed on sculpture, buildings, and areas around the park.

Scale: The scale varies but the vinyl cuts will be about 12"x12"

Location: They will be installed throughout the park.

Context: The park is situated in a community. I want to incorporate the people that make up that community directly in the park space.

Component Relationships: The animals will live all around the park, bringing an element of play throughout the whole space. On opening day we will host a treasure hunt and anyone who finds all of the drawings and marks where they are on a park map will receive a custom designed patch.





Commission for Arts and Culture

STAFF REPORT

DATE ISSUED: October 10, 2023

ATTENTION: Public Art Committee

SUBJECT: Final Artwork Proposal by Beliz Iristay: Southwest Park

REFERENCES: 1) [Commission for Arts and Culture Department Instruction 1.00 – Collection Management Policy for the Civic Art Collection](#)
2) Final Artwork Proposal Package

STAFF CONTACT: Lara Bullock, Ph.D., Civic Art Project Manager

STAFF RECOMMENDATION:

Recommend to the City of San Diego Commission for Arts and Culture (Commission) that the Executive Director of the Commission accept the Final Artwork Proposal by Beliz Iristay on the condition of further research into potential modifications to the artwork's proportions and site interface, in fulfillment of the City of San Diego's (City) collecting mission, collection scope and accession criteria as established in Section 5 – Collecting Mission, Section 6 – Scope of the Collection and Section 8.2 – Accession Criteria of the Commission for Arts and Culture Department Instruction 1.00 – *Collection Management Policy for the Civic Art Collection*.

SUMMARY:

Artist Beliz Iristay was commissioned to design, fabricate and transport permanent, site-specific artwork for Southwest Park and consult during installation of artwork at the site by the City. The Southwest Park project involves the design and construction of a new park in Otay Mesa West. Spurlock Landscape Architects are the lead designer for the park to be located on the western edge of the neighborhood adjacent to Interstate 5. The artist has collaborated closely with Spurlock Landscape Architects.

On July 20, 2023, Iristay presented her preliminary artwork idea to the Public Art Committee (PAC) for feedback. PAC also provided feedback on the artist's schematic artwork proposal on September 15, 2023. In addition to PAC's feedback, the final artwork proposal is informed by suggestions from the public, the City's Parks and Recreation Department, and other various City departments.

FISCAL CONSIDERATIONS:

This project is funded by the City as set forth in *City of San Diego Council Policy 900-11 - Inclusion of Public Art in Selected Capital Improvements program Projects*.

Schematic Artwork Proposal
“Deseos / Wishes”

for

“Southwest Park”
Otay Mesa-San Diego

by

Beliz Iristay

Project Proposal

For Southwest park I would like to propose a monumental veladora sculpture, essentially a richly decorated cylinder that would evoke the format of the familiar objects while also taking a new context with scale, sort of like a border pop art sculpture. The sculpture will keep the traditional format of a front with a framed image and a back design.

Veladoras are tall cylindrical glass jars, to achieve the desired scale I will need to construct a stainless-steel structure that would support the different possible materials. I work with the theme of tree of life.

The veladora sculpture will have an interior lighting feature that would give the sculpture a glow that would evoke a lit veladora candle. Exterior ground spotlights would be placed in front of the ceramic mural.

Research of the community

My research lead me to study the demographics of Otay Mesa-Nestor community; the community is 75% Hispanic with most the population in the age group between 35-40 years old.

After seeing the demographics analyses, I come to the conclusion that I needed to designing a sculptural piece that can enrich and honor the Otay Mesa community. I also believe the artwork would need to appeal to a multicultural border community by addressing universal themes.

I would like to create a piece that would celebrate the cultural transitions of the immigrant families, their journeys, I would like to also to honor the traditions for those who are natives to the region.

After visiting the park site and the neighborhood around, I realized that Southwest Park will be next door to a middle and a high school, the park will be an integral addition to the community and I am proud to be part of its making.

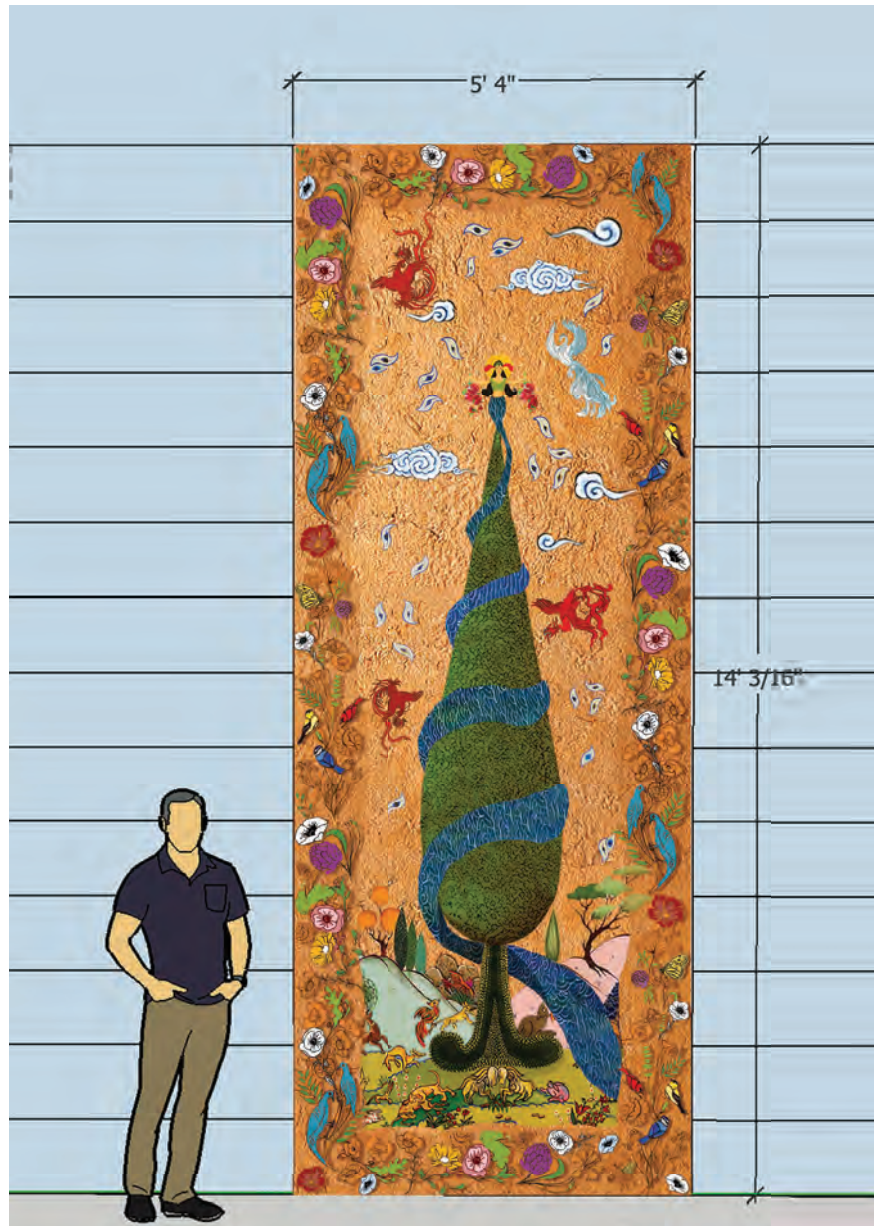
Veladoras/Votive Candles

As a border artist living in Mexico I have always been fascinated with the widespread use of votive candles known as “Veladoras”. These traditional objects of devotion can be seen in roadside shrines and other celebrations. Veladoras are also widely used in Hispanic Botanica- Herbal Dispensaries on both sides of the border, here they function as expressions of wishing something for one’s life.

Front Mural Design

For the front, I would like to create a design that exhibits the “ Tree of Life.” The of Tree of Life is a universal symbol that carries multiple meanings including connectivity, orientation, and fertility, it is also a metaphor to the branchings of families and nature.

I use a Cypress tree, a Mediterranean symbol for the tree of life. I frame around the main design with high and low relief hand sculpted clay elements like native plants, flowers and animals from Otay Mesa Region to represent nature and other symbols.



High & Low Reliefs of Ceramic Frame Design

California Poppies

Milkweed

Monarch Butterfly

Great-tailed Grackle

California Blue Sage

Thistle

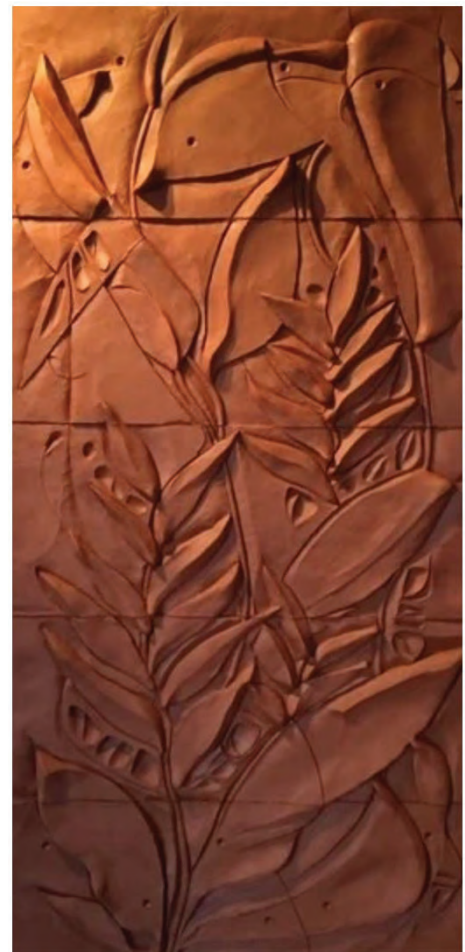
Karanfil Flower

Western Honey Bee

Gold Finch

Hooded Oriole

Sea lavender



Back image

For the back image, I am exploring the idea of developing motifs inspired by traditional Mexican textiles. Over the years I have been impressed by the craft traditions of native Otomi peoples, their works are more than just decorative art forms, they also play a part as symbols of Mexican culture and heritage. Interestingly, there are parallels in the symbolism in Otomi crafts and in ancient Turkish crafts; flowers can represent nature and fertility, animals like the humming bird, butterfly, lizard and raccoon that represents the Otoy Mesa region local fauna. These designs are symbols for fertility, spirits, migration, and good fortune. I also use Turkish motifs with combination ancient Anatolian symbols like “Cintamani” which acts as a spiritual protection in my design.



Artist Design



Back View Water-jet cut stainless steel with acrylic panels



Night view of Deseos-Wishes



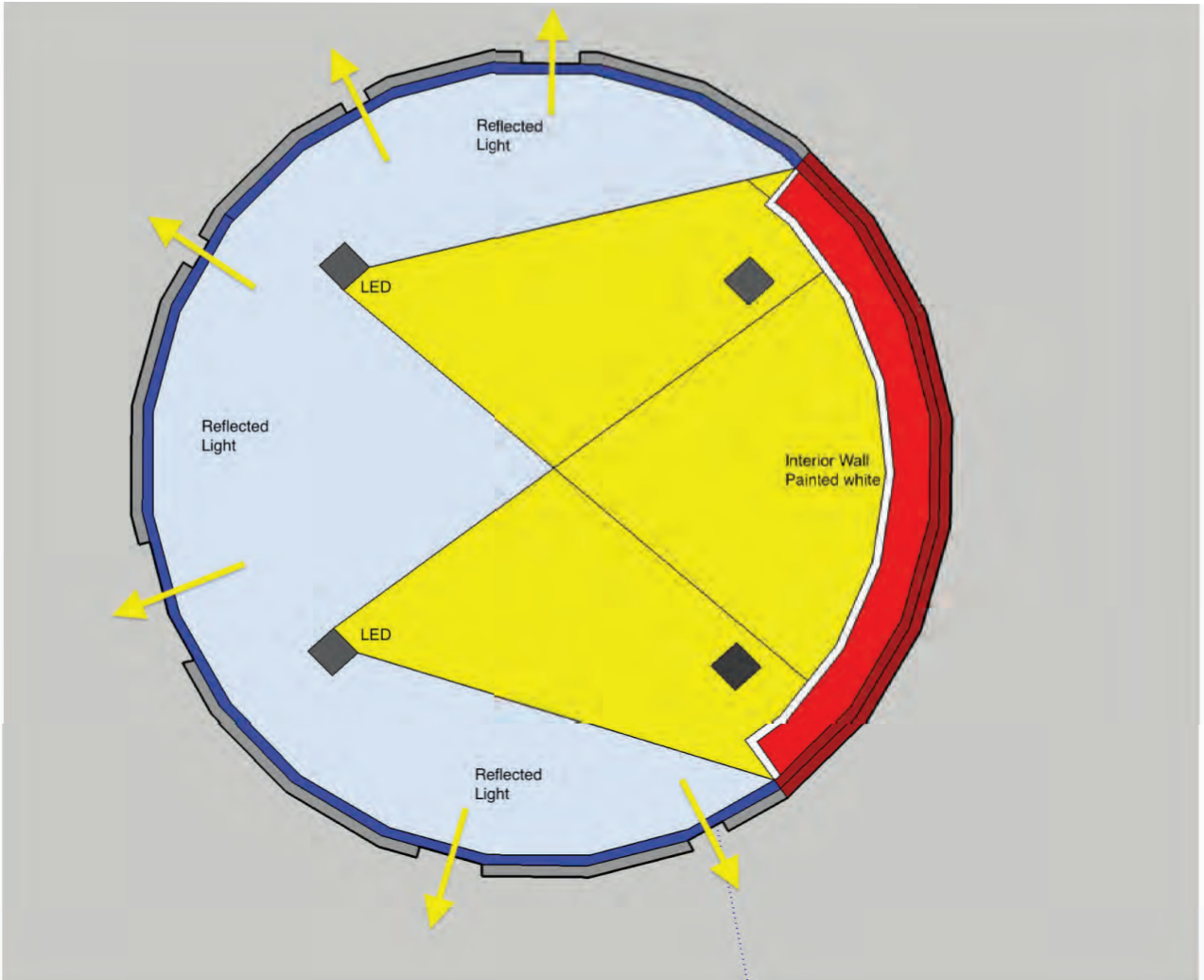
Site Plan AREA 2

I visualize the veladora sculpture becoming a pin-point destination that can bring the members of the community together. I would like to choose a central location where the sculpture can be viewed from many angles. My first choice is the triangular site in Area 2, marked with a star, the site is located by the neighborhood entry.

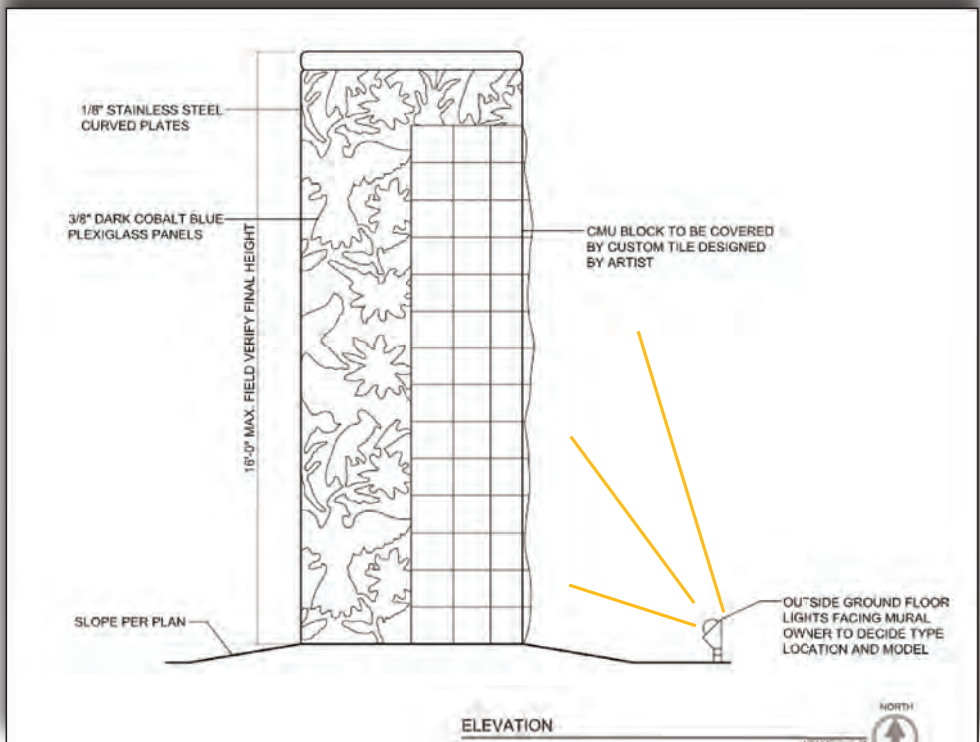
PROJECT LOCATION

OPTION 2





Interior LED light Placement on the posts



Exterior Ground Spotlight Placement