

PACIFIC HIGHLANDS RANCH LIBRARY  
FINAL ARTWORK PROPOSAL by JANELLE IGLESIAS

*TEXT/TILE*

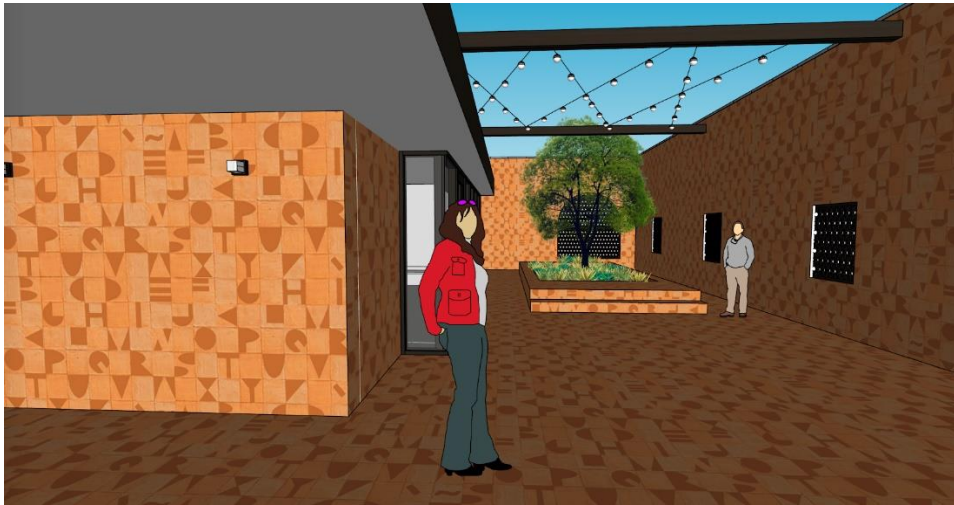
**LOCATION:**

Exterior Friends of the library back courtyard, which includes a back entrance to the library:



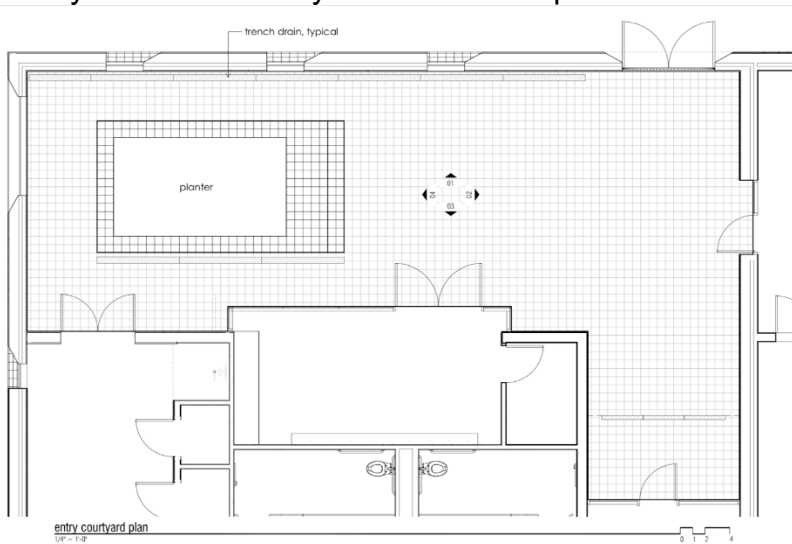
The courtyard features a tree and planting area that will also be tiled and provides a seating area around the tree:







Bird's eye detail of Courtyard with central planter:



**ARTWORK:**

MODULAR ALPHABET DESIGN TO INCLUDE LATIN ALPHABET & PUNCTUATION THAT ALLOWS FOR WORDS TO BE WRITTEN IN ENGLISH, SPANISH & KUMEYAAAY, REFLECTING THE LINGUISTIC HISTORY OF THE LOCALITY.