

Mira Mesa Community Plan Update: Parks & Recreation

Planning Department

Feb. 21, 2019

6:10 pm to 7:00 pm – Mira Mesa Library



Planning Department –Outline

1. Community Plan Update/Recap
2. Parks and Recreation Overview
 - General Plan
 - Park Master Plan
 - Engagement Result
3. Existing Conditions & Potential Park Opportunities
4. Draft Goals & Policies
5. Discussion & Next Steps



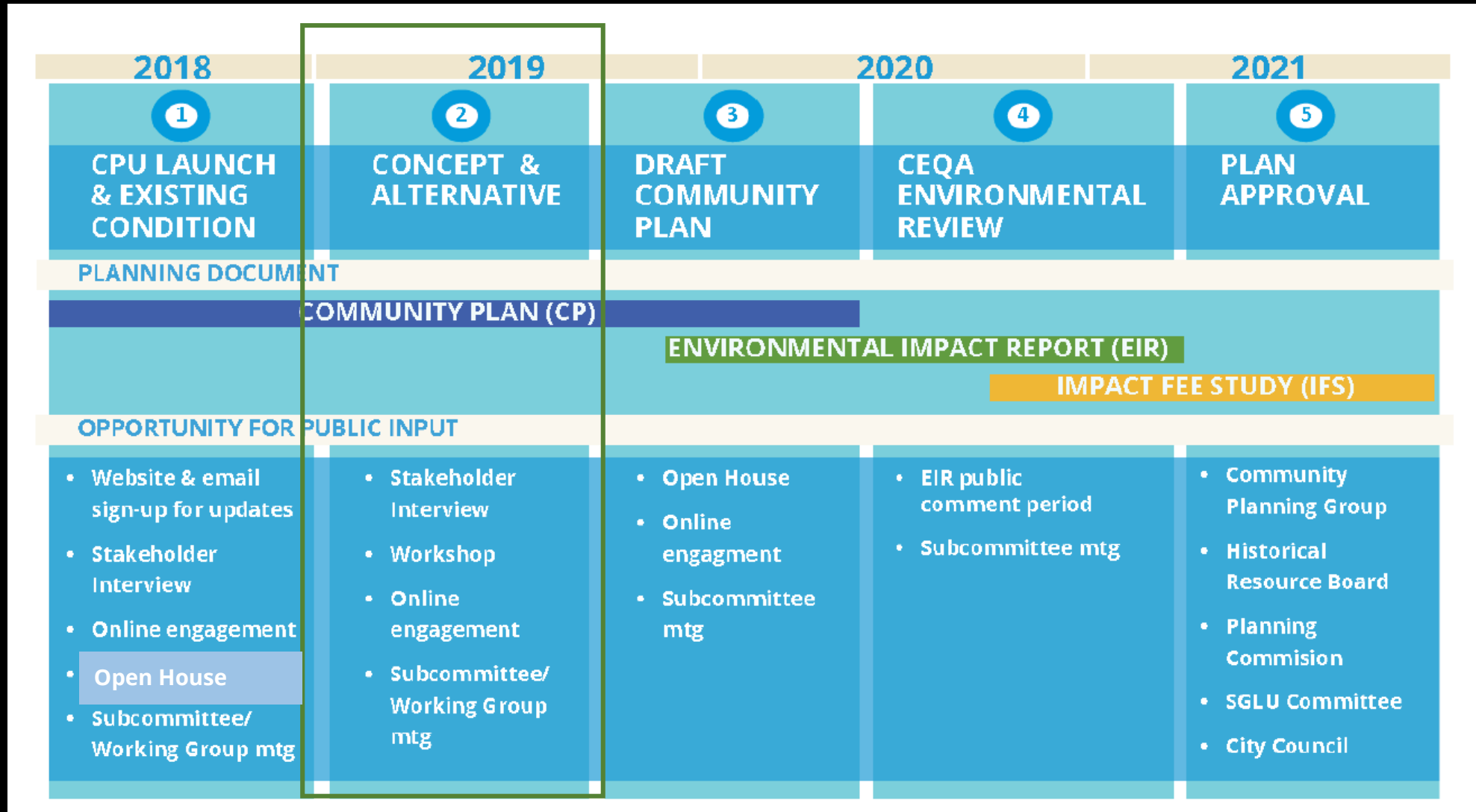
Planning Department – Presentation Outline

Update/Recap





Process and Timeline



Mobility**Kimley»Horn**

- Draft Mobility Existing Conditions Report: March 2019
- Mobility Concepts: Fall 2019

Urban Design & Environment**DUDEK**

- Urban Design Concepts: Spring/Summer/Fall 2019

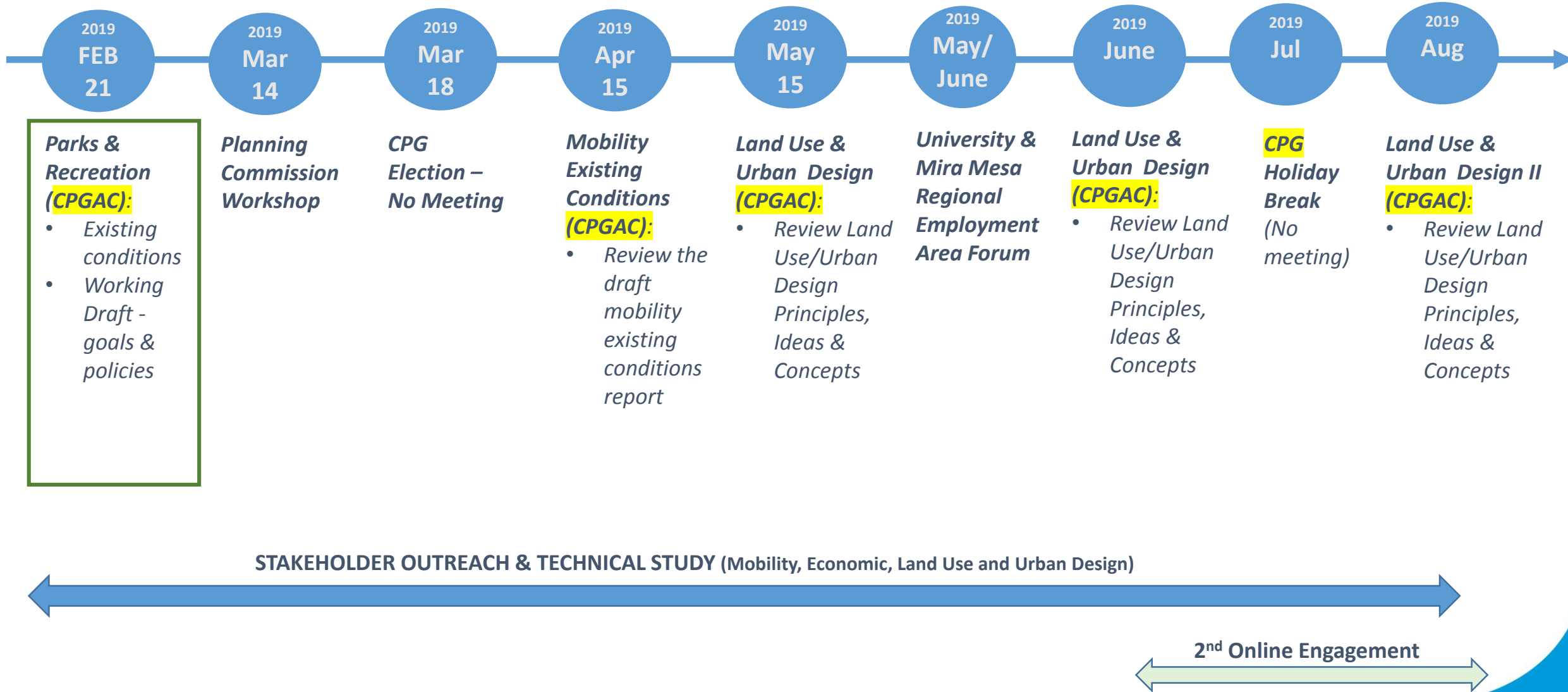
Economy

KEYSER MARSTON ASSOCIATES, INC.

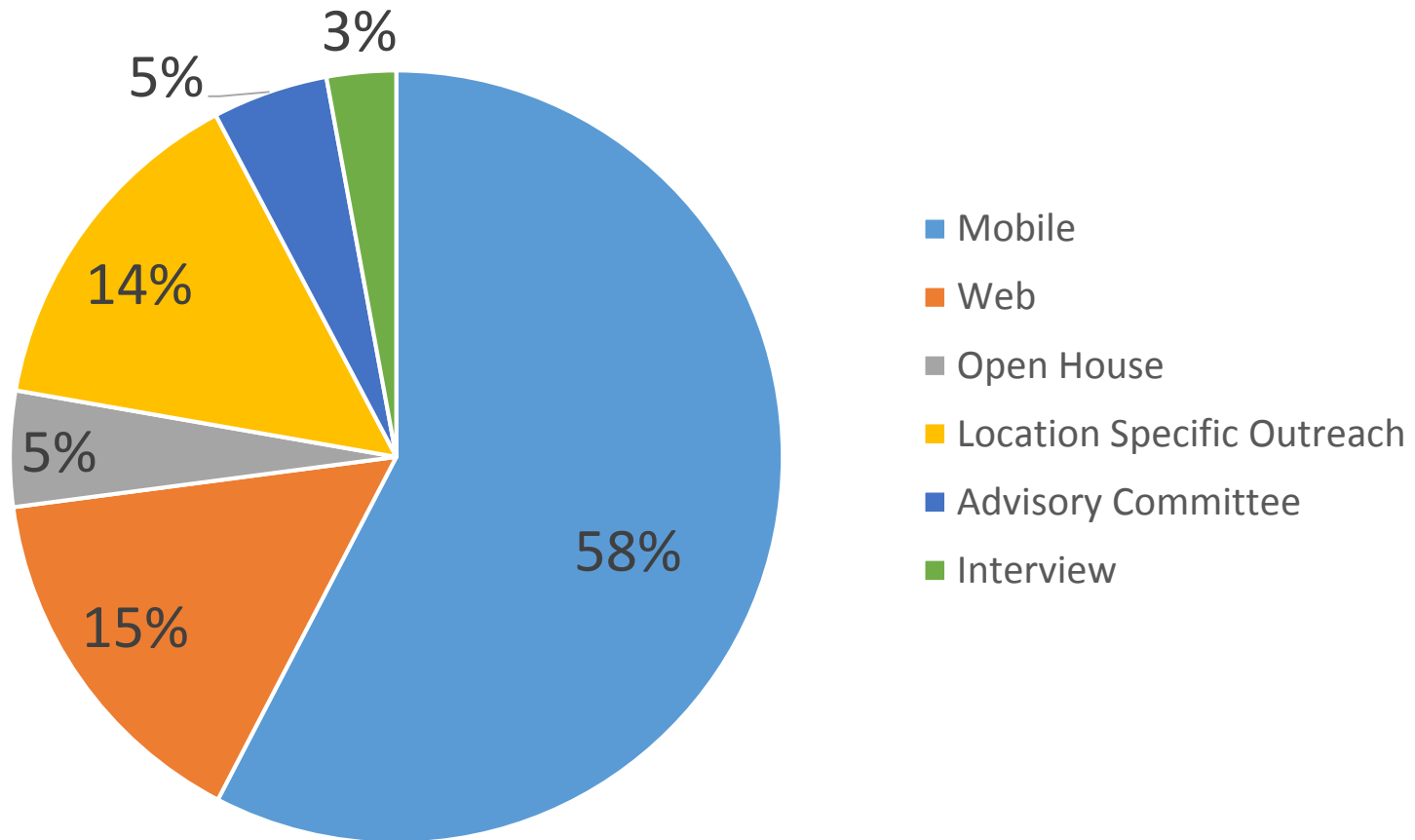
- Market Study: Spring 2019

Land Use & Public Facilities**Planning**

- Land Use Suitability Analysis: Spring 2019
- Land Use Scenarios: Summer 2019

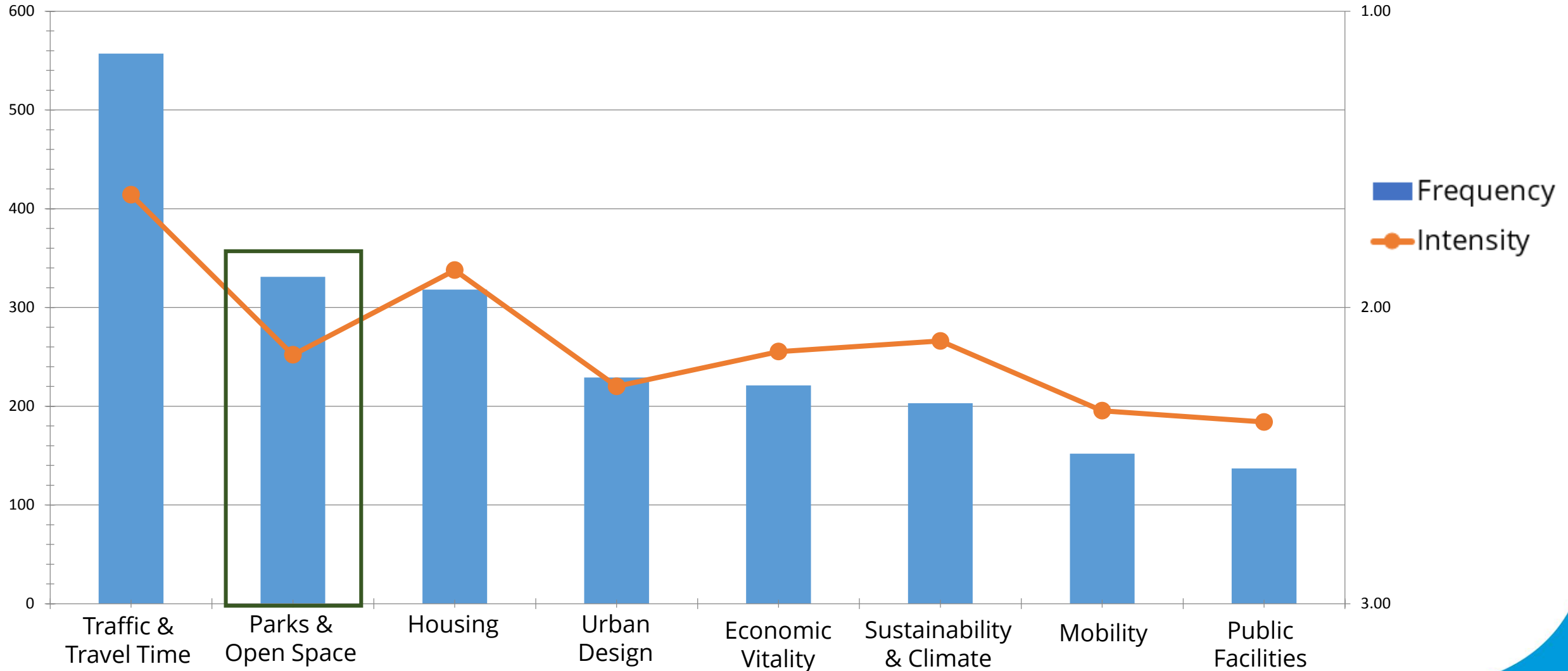


Outreach Approach



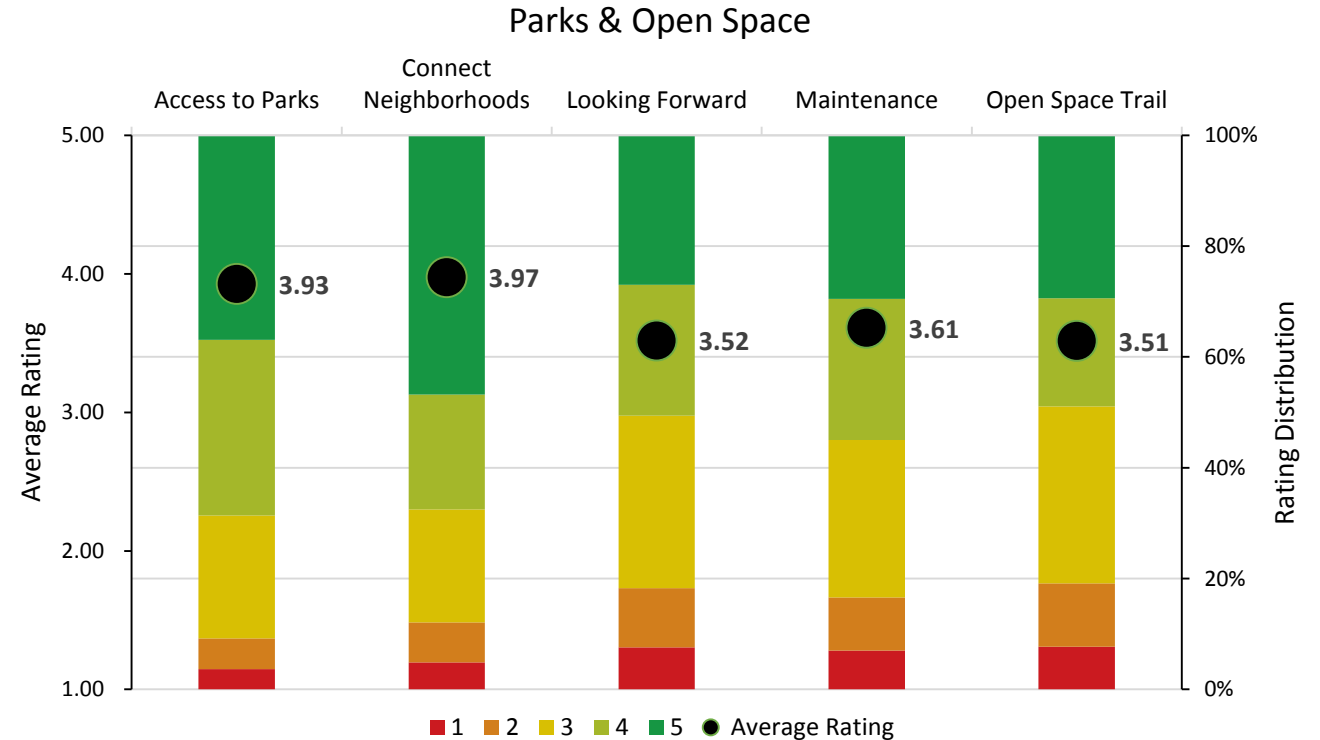
- Data-driven
- Evidence-based
- Representative input

Online Survey All Rankings Bar Chart



PARKS & OPEN SPACE

Speaks to the intentional ways we promote parks and active lifestyles. The community's parks and open space contribute to health and quality of life by connecting people with recreational and social opportunities.



Access to Parks

Most residents have access to neighborhood parks within a 10-minute walk.

Connect Neighborhoods

Create interconnected biking and walking path to parks and canyons.

Looking Forward

The number of parks being planned is keeping up with community needs.

Maintenance

Existing parks facilities are well maintained.

Open Space Trail

There are adequate opportunities to walk in natural open space areas.

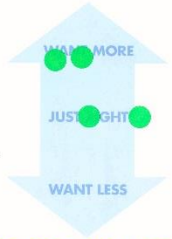
SD Mira Mesa
Community Plan Update

LAND USE

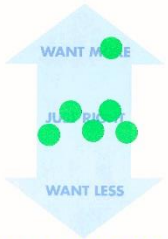
MANUFACTURING, COMMERCIAL, OFFICE & CRAFT



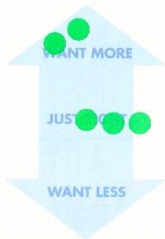
Manufacturing



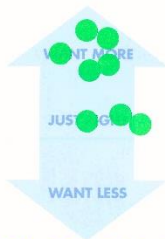
Shopping Centers & Malls



Offices/Research & Development



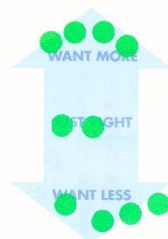
Food, Beverage, & Craft Production



Medium Density Housing



High Density Mixed Use



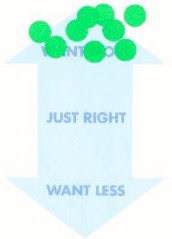
COMMUNITY CHARACTER: CHOOSE YOUR INGREDIENTS

RESIDENTIAL & MIXED USE

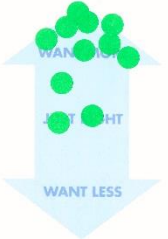
PUBLIC REALM



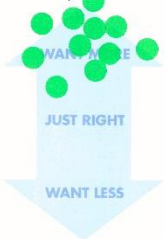
Walkable Environments



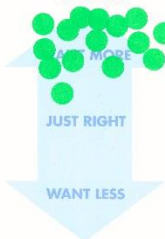
Public Parks



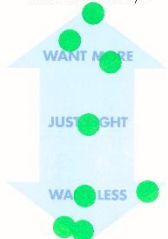
Public Squares & Plazas



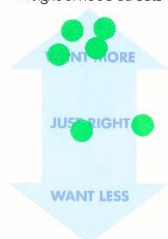
Multiuse Trails



Arterial Roadways



Neighborhood Streets



Type	Want Less	Just Right	Want More
Manufacturing	-	2	2
Shopping Centers and Malls	-	5	1
Offices/Research and Development	-	3	2
Food, Beverage, and Craft Production	-	3	5
Medium Density Housing	6	-	3
High Density Mixed-Use	4	2	4
Walkable Environments	-	-	9
Public Parks	-	2	9
Public Squares and Plazas	-	-	11
Multiuse Trails	-	-	15
Arterial Roadways	4	1	3
Neighborhood Streets	-	2	4



WHAT AMENITIES DO YOU WANT MORE OF IN YOUR PUBLIC PARKS?



Playgrounds
●●



Soccer fields
●



Ball fields
●●



Off-leash dog parks
●●●●●



Picnic areas
●●●



Multi-purpose courts
●



Tennis courts
●●●●●



Nature exploration areas
●●●●



Recreation Centers
●●●●●



Aquatic Complex
●●●●●



Comfort stations
●●●



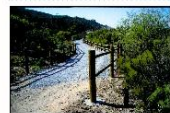
Fitness course
●●●●



Non-programmed turf areas
●●



Skateboard park
●



Multi-use trails
●●●●●



Amphitheater/performance space
●●●●●

Write In

Write In

Write In

Write In
Better lighting ●

Type	Dots
Multi-use trails	7
Off-leash dog parks	5
Tennis courts	5
Nature exploration areas	5
Recreation centers	4
Aquatic complex	4
Fitness course	4
Amphitheater/performance space	4
Picnic areas	3
Comfort station	3
Playgrounds	2
Ball fields	2
Non-programmed turf areas	2
Soccer fields	1
Multi-purpose courts	1
Skateboard park	1
Write in: Better lighting	1



WHAT TRAIL AMENITIES DO YOU WANT MORE OF ON YOUR TRAILS?



Trail structure improvements



Trail surface improvements



Trail kiosk with map



Trail head with benches



Distance markers



Interpretive signs



Scenic overlooks



Revegetation on sides of trails



Write In



Type	Dots
Trail structure improvements	7
Trail surface improvements	5
Trail head with benches	5
Scenic overlooks	5
Revegetation on sides of trails	5
Trail kiosk with map	4
Interpretive signs	4
Distance markers	3
Write in: Replace old signs	1
Write in: Wide and bike friendly	1

Parks and Recreation Overview

1 PRESERVE AND PROTECT PARKLANDS	2 ACQUIRE PARKLAND AND DEVELOP NEW PARKS	3 OPERATE AND MAINTAIN PARKS	4 ENHANCE RECREATION OPPORTUNITIES AND FACILITIES
---	---	---	--

The purpose of the Recreation Element is “to preserve, protect, acquire, develop, operate, maintain and enhance public recreation opportunities and facilities” for all the residents of Clairemont.

– 2008 City of San Diego General Plan

NORTH PARK COMMUNITY PLAN

RECREATION **7**

Table 7-1: Population-Based Parks and Recreation Facilities Inventory and Recommendations

Parks/ Recreation Facilities	Existing Useable Acreage	Future Useable Acreage	Parks and Recreation Facilities Descriptions	Parks and Recreation Facilities Recommendations
Major Parks - None				
Community Parks				
North Park Community Park	7.90		Existing park and recreation facilities consisting of a recreation center, a teen center, an adult center, a comfort station, a lighted ball field, multipurpose turf areas, a children's play area, three tennis courts, handball courts, walkways, seating and picnic tables. Of the 7.90 acres, 2.84 acres is part of the joint use area with ALBA school.	Replace natural turf on ball field with synthetic turf and provide new sports field lighting to increase use.
Neighborhood Parks				
Montclair Park	4.97		Existing park consisting of passive recreation amenities, including multi-purpose turf area, children's play area, seating, picnicking, walkways, and landscaping.	
Mini Parks - None				
Pocket Parks/Plazas				
34th Street Pocket Park		0.15	Proposed pocket park is within the street right-of-way located at the southern terminus of 34th Street, south of Maple Street, which is the official trailhead to Juniper Canyon open space.	Vacate the street right-of-way, acquire site, design and construct park amenities to support passive recreation, such as a children's play area, seating, picnicking, walkways, and landscaping.
Cedar Ridge Park	0.27		Existing park at the southern terminus of Pentucket Avenue, south of Fir Street, consisting of passive recreation amenities, including multi-purpose turf area, children's play area, seating, walkways, and landscaping.	
North Park Mini-Park		0.50	Proposed park on City-owned property, on an undeveloped site located behind the North Park Theater, on North Park Way, between Granada Avenue and 29th Street.	Construct the park amenities consistent with the approved General Development Plan.
Lincoln Avenue Pocket Park		0.21	Proposed park on undeveloped street right-of-way, from Georgia Street to the existing alley, to accommodate passive recreational uses.	Vacate street right-of-way, acquire site, design and construct park amenities to support passive recreation, such as pathways, overlooks, seating, interpretive signs, and landscaping.
Switzer Canyon and 30th Street Pocket Park		0.16	Proposed park within City-owned open space in Switzer Canyon to accommodate passive recreational uses.	Design and construct park amenities to support passive recreation, such as seating, walkways, and interpretive signs.
Teresita & Maple Streets Pocket Park		0.17	Proposed pocket park on undeveloped street right-of-way to accommodate passive recreational uses, including a trailhead into Juniper Canyon Open Space.	Vacate street right-of-way, acquire site, design and construct park amenities to support passive recreation, such as a children's play area, seating, picnicking, walkways, landscaping, and a trail system staging area.
Special Activity Parks - None				

117

Goals & Policies addressing 4 main sections

1. Parks and Recreation Facilities

- Inventory of Existing P&R Facilities
- Recommendations for Future P&R Facilities

2. Preservation

3. Accessibility

4. Open Space & Resource-Based Parks



Population-Based Parks



Resource-Based Parks



Open Space Parks



Joint-Use Field as Park Equivalency



Provides a place for physical activity



Promotes physical and mental health



Provides environmental benefits



Provides opportunities for social and community interactions



1. Population-Based Parks

- 2.8 useable acres/ 1,000 residents

2. Recreation Centers

- 17,000 SF Recreation Center/ 25,000 residents

3. Aquatic Complexes

- 1 Aquatic Complex/ 50,000 residents

The Parks Master Plan (PMP)



- Citywide policy document to shape the future of parks, recreation facilities and programs for the next 20 – 30 years
- The PMP will serve as a long-term roadmap for creating a world-class parks and recreation system

www.cityofsandiegoparksplan.com

Parks Master Plan

Approach: Step by Step

Project Timeline

FALL 2017 to SUMMER 2018

FALL 2018 to WINTER 2019

SPRING 2019 to FALL 2019

WINTER 2020 to FALL 2020

1

Learning Existing Conditions



Existing Conditions Analysis

- Data Review
- Demographics Analysis
- Climate Action Plan Analysis
- Recreation Programs and Services Assessment

2

Exploring Needs and Priorities



Public Input

- Regional Focus Workshops
- Stakeholder Interviews
- Online Activity
- Statistical Survey

Needs Analysis

- Benchmark Comparison
- Service Standards Analysis
- Recreation Program Evaluation
- Trends Analysis

3

Envisioning Long-Range Park Planning



Visioning Workshops

- Vision Statement
- Guiding Principles, Goals and Policies
- Conceptual Parks System Vision Map

4

Implementing Parks Master Plan



Implementation Workshop

Strategic Plan Development

- Short-term, mid-term and long-term actions
- Funding strategies
- Partnership opportunities

Community Open Houses

Public Involvement Public Engagement is integrated into each step of the planning process

Existing Conditions/Potential Opportunities

COMMUNITY INPUT

- 1 Bike and walk trail
- 2 Bike & Walk trail
- 3 Park-recreational area

Seed Park is only 23 acres. To achieve 280 acres of parkland in Mira Mesa what about a larger 4 community park like Rohr park?

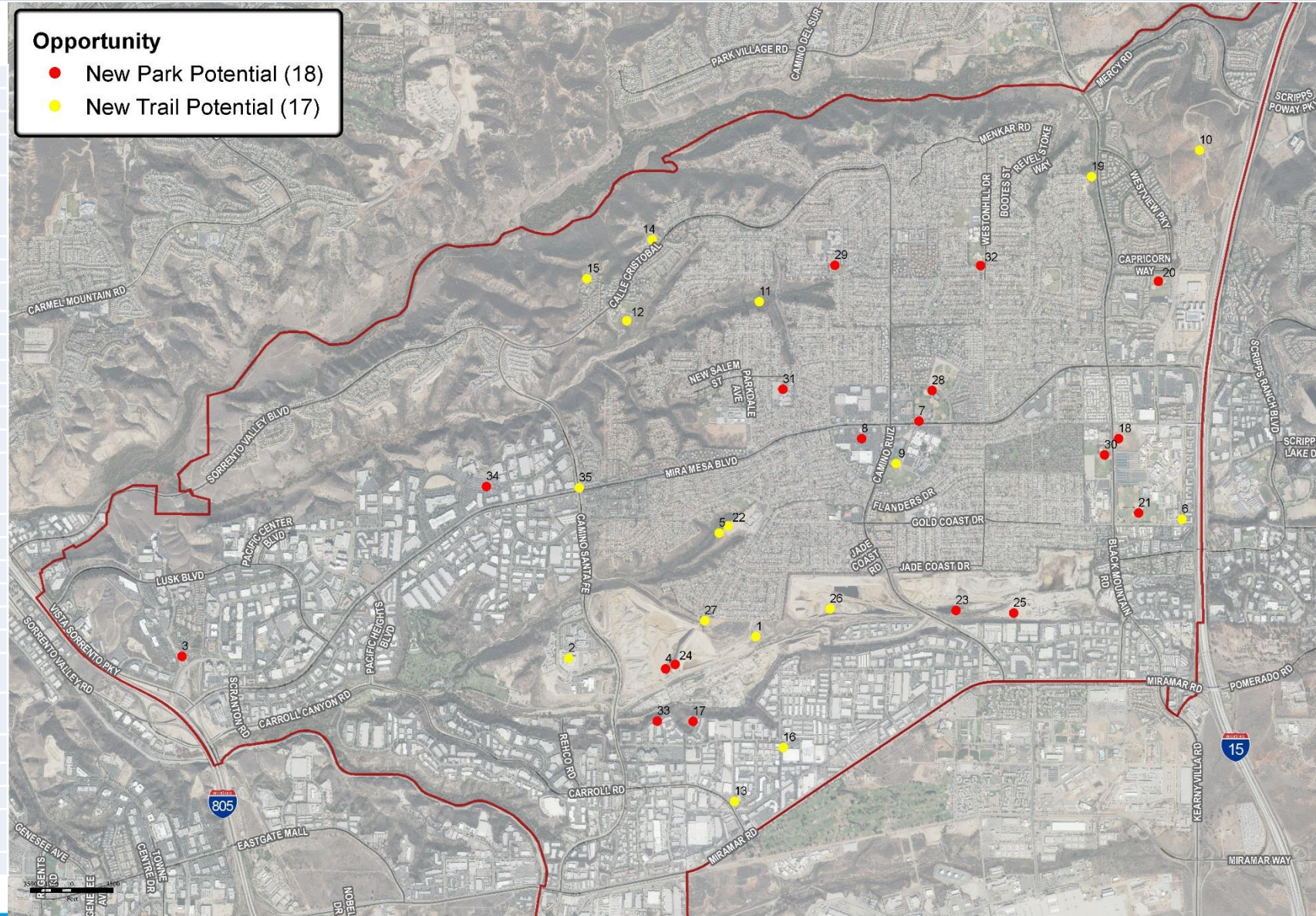
Let's open up this space and preferably make accessibility connections at both ends. Might include bicycle paths, opening a network that could include Stone Canyon (future Carroll Cyn 5 development).
- 6 Continue the sidewalk through to Gold Coast Drive.
- 7 Need a dog park
- 8 Add a parklet or some green space with shade to make an inviting place to sit in between shopping
- 9 Need a longer walk/run path that encompasses both parks uninterrupted
- 10 Develop a new foot trail and/or enhance existing truck roads, a la Mission Trails Reg Pk.
- 11 Fully develop trail into and through the length of Lopez Canyon.
- 12 Connect walking trail from park to canyon bottom, similar to Cam Ruiz Park.
- 13 Explore using the old railway as a walking path: walk between Miramar breweries!!
- 14 Enhance pedestrian and bicycle facilities and connection to PQ trails

It would be great to have a hiking trail down to the waterfall in the Penasquitos canyon in this general area. The only current access is much further or poorly maintained paths that aren't 15 meant for public use.
- 16 Use out of service rail line for dedicated bike lanes
- 18 This spot has been an empty, trashy, dirt lot for a long time. Put a Park here!
- 19 This is wasted space and would be nice to have some walking trails and a park here.
- 23 Find a way to restore Carroll Canyon and create an open space park
- 24 This big open space could be transformed to parks or entertainment/arts area.
- 25 Open area that could become parks, entertainment or arts area.

A multiuse trail (hiking and biking) from the end of Parkdale Ave. down to the planned Carroll 27 Canyon development and new park would encourage non-driving trips to this new area.

The Mira Mesa Rec Center would benefit from an expansion to give additional space for multiple 28 indoor sports courts and expanded rooms for community activities in the heart of Mira Mesa.
- 29 This park could be improved so that it's more functional for sporting activities and practices.
- 30 Develop this space into a multi use sports complex
- 31 I feel like Hickman is the only Mira Mesa Elementary school without a park nearby.

The intersection of these two streets are an excellent opportunity for this community to start 32 building neighborhood greenways here. Long, side streets, what more do you need?
- 35 There are tons of great breweries around here but no way to get between them other than driving



COMMUNITY INPUT

- 1 Bike and walk trail
- 2 Bike & Walk trail
- 3 Park-recreational area

Seed Park is only 23 acres. To achieve 280 acres of parkland in Mira Mesa what about a larger 4 community park like Rohr park?

Let's open up this space and preferably make accessibility connections at both ends. Might include bicycle paths, opening a network that could include Stone Canyon (future Carroll Cyn 5 development).
- 6 Continue the sidewalk through to Gold Coast Drive.
- 7 Need a dog park
- 8 Add a parklet or some green space with shade to make an inviting place to sit in between shopping
- 9 Need a longer walk/run path that encompasses both parks uninterrupted
- 10 Develop a new foot trail and/or enhance existing truck roads, a la Mission Trails Reg Pk.
- 11 Fully develop trail into and through the length of Lopez Canyon.
- 12 Connect walking trail from park to canyon bottom, similar to Cam Ruiz Park.
- 13 Explore using the old railway as a walking path: walk between Miramar breweries!!
- 14 Enhance pedestrian and bicycle facilities and connection to PQ trails

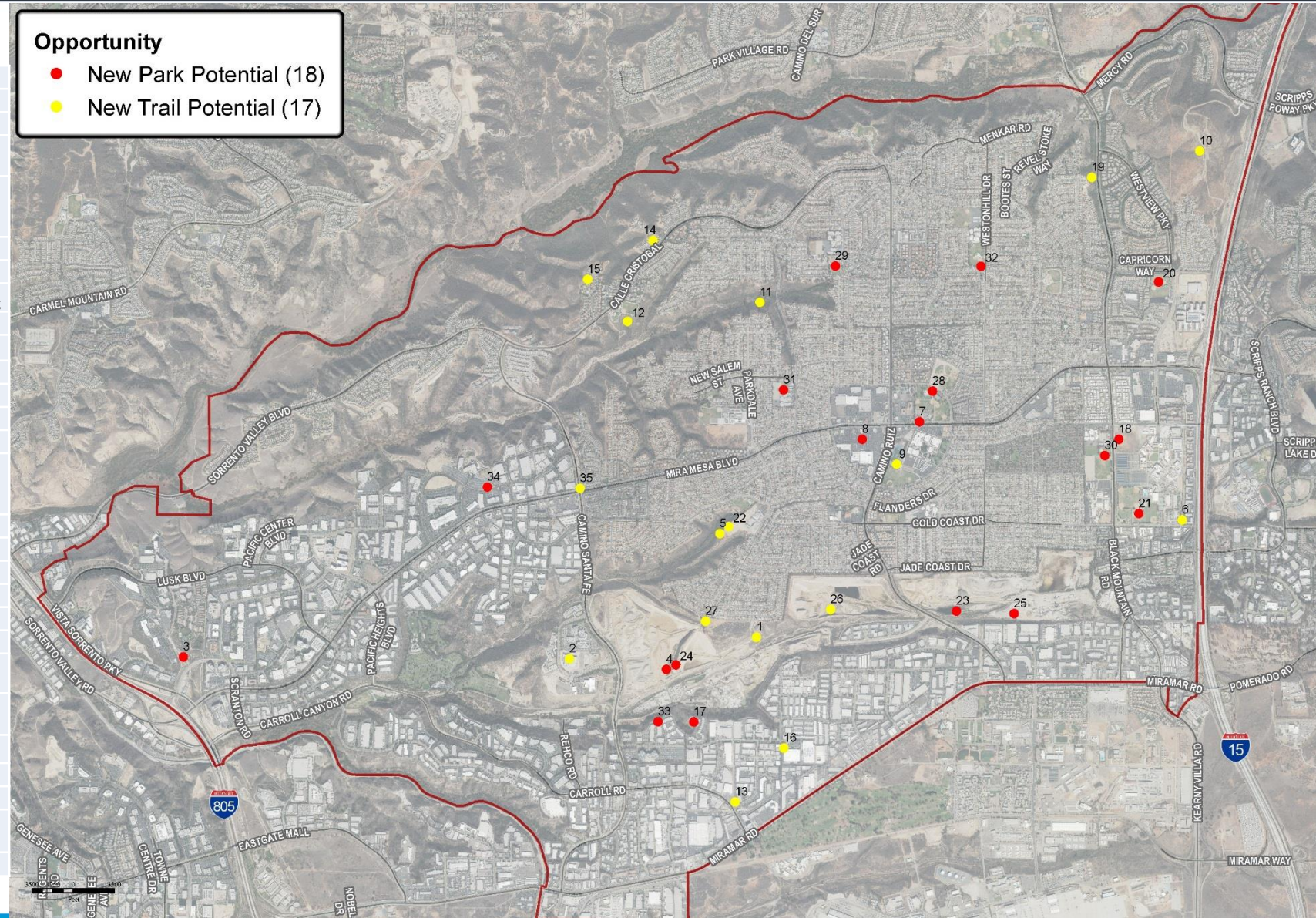
It would be great to have a hiking trail down to the waterfall in the Penasquitos canyon in this general area. The only current access is much further or poorly maintained paths that aren't 15 meant for public use.
- 16 Use out of service rail line for dedicated bike lanes
- 18 This spot has been an empty, trashy, dirt lot for a long time. Put a Park here!
- 19 This is wasted space and would be nice to have some walking trails and a park here.
- 23 Find a way to restore Carroll Canyon and create an open space park
- 24 This big open space could be transformed to parks or entertainment/arts area.
- 25 Open area that could become parks, entertainment or arts area.

A multiuse trail (hiking and biking) from the end of Parkdale Ave. down to the planned Carroll 27 Canyon development and new park would encourage non-driving trips to this new area.
- 28 The Mira Mesa Rec Center would benefit from an expansion to give additional space for multiple indoor sports courts and expanded rooms for community activities in the heart of Mira Mesa.
- 29 This park could be improved so that it's more functional for sporting activities and practices.
- 30 Develop this space into a multi use sports complex
- 31 I feel like Hickman is the only Mira Mesa Elementary school without a park nearby.

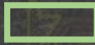



The intersection of these two streets are an excellent opportunity for this community to start 32 building neighborhood greenways here. Long, side streets, what more do you need?
- 35 There are tons of great breweries around here but no way to get between them other than driving

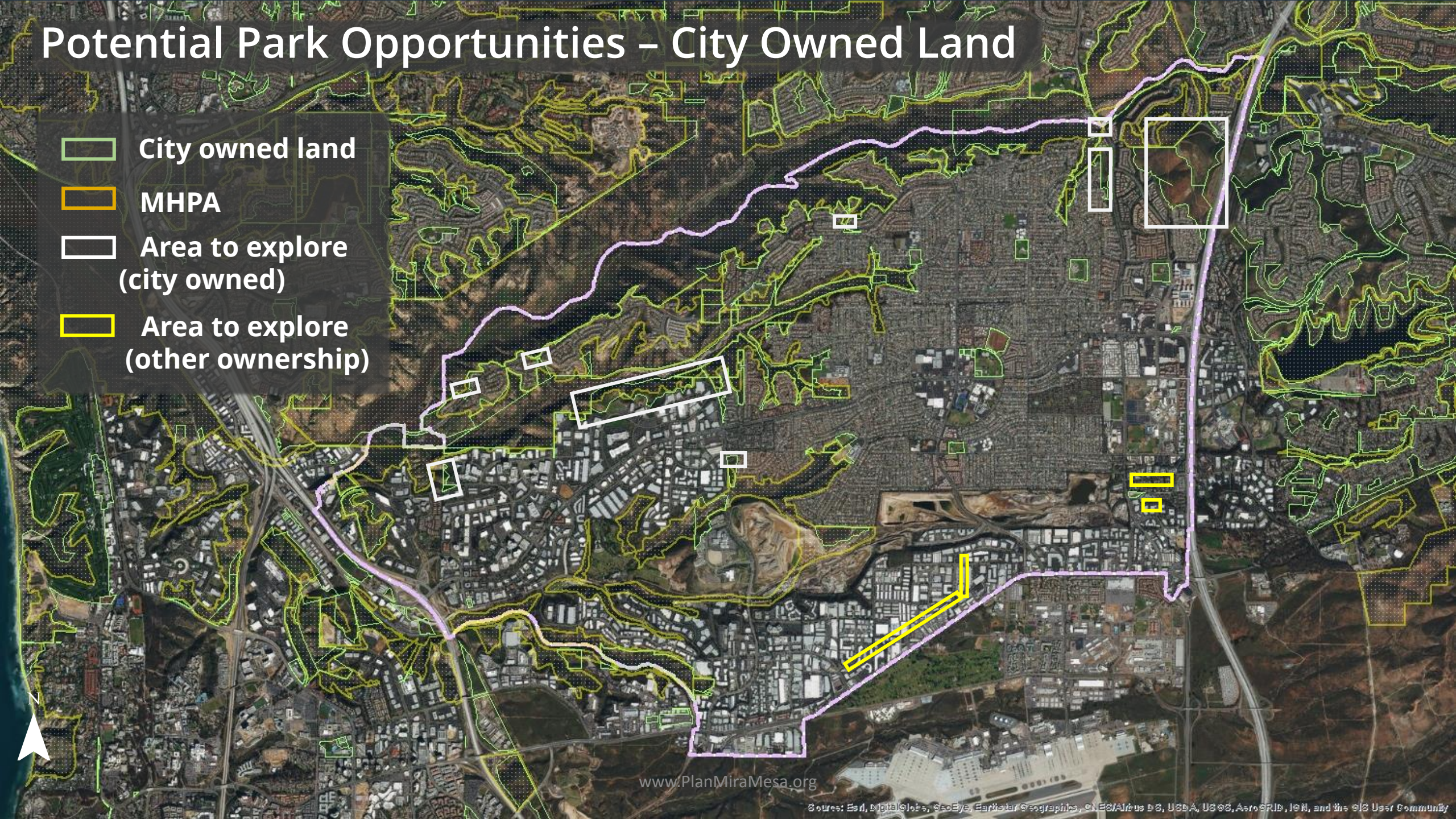
Opportunity

- New Park Potential (18)
- New Trail Potential (17)

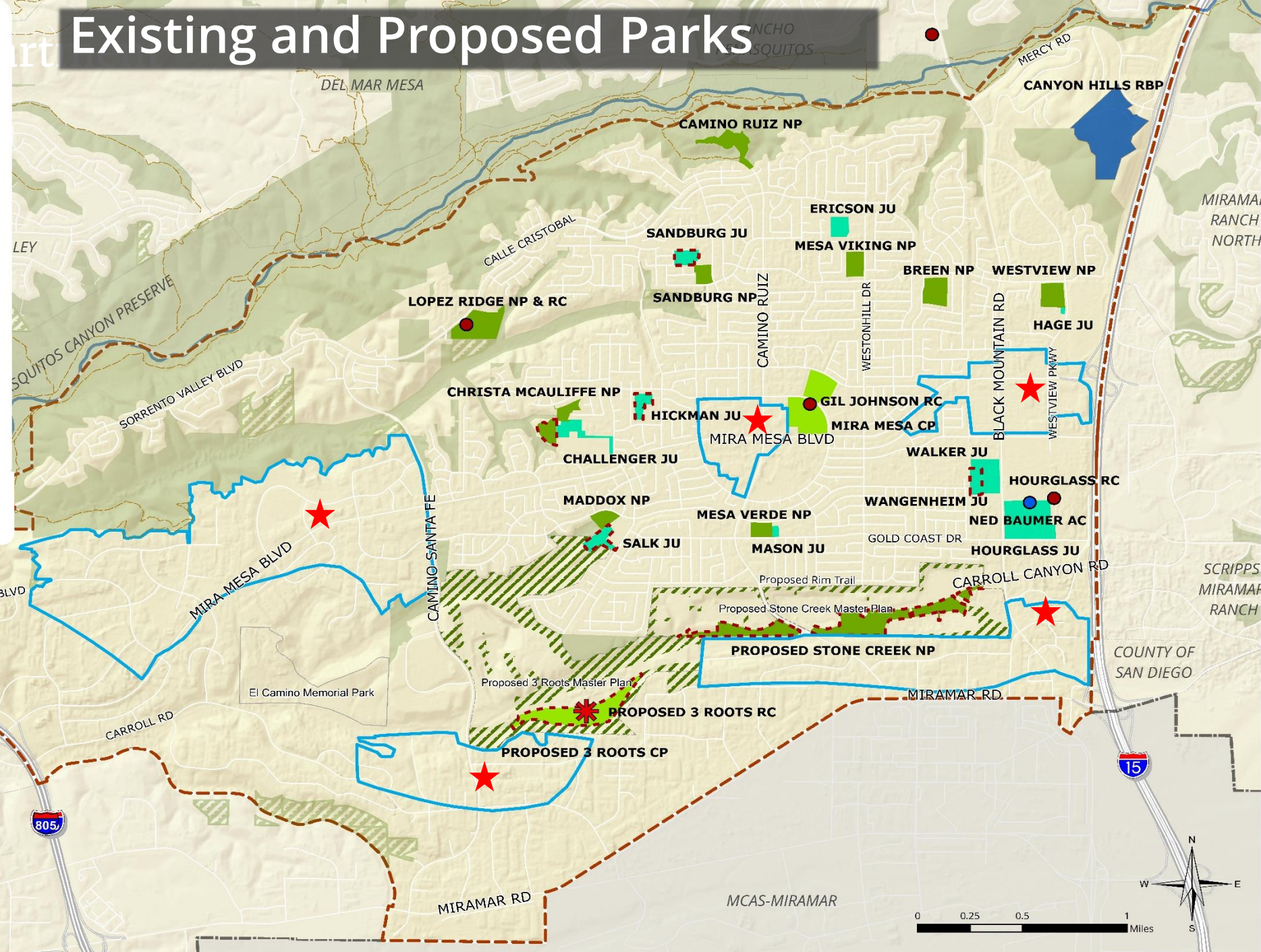


Potential Park Opportunities – City Owned Land

-  City owned land
-  MHPA
-  Area to explore (city owned)
-  Area to explore (other ownership)

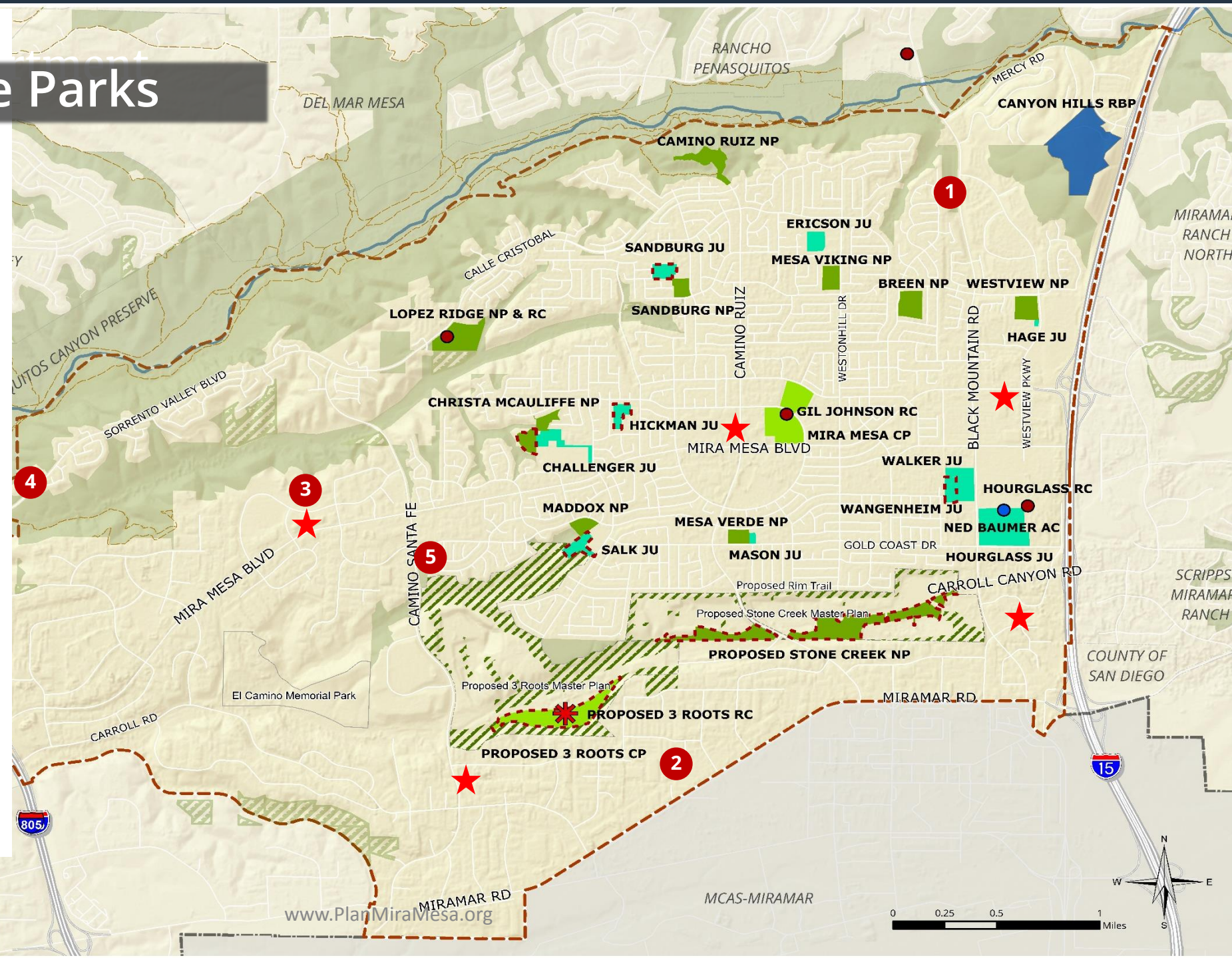


- Mira Mesa CPA
- Focus Area
- Community Park
- Neighborhood Park
- Joint Use Park
- Resource Based Park
- Proposed Community Park
- Proposed Neighborhood Park
- Proposed Joint Use Park
- Proposed Open Space or Park (Master Plans)
- City or County Park
- Official Trail
- Proposed 3-Roots Recreation Center
- Aquatic Complex
- Recreation Center
- Potential Park Opportunities at Focus Areas



"First 5" Possible Parks

- 1 Black Mtn. Rd. Park Opportunity
- 2 Fallow Rail Linear Park
- 3 Rim Trail
- 4 Trail-Head and Connection to Los Penasquitos Canyon
- 5 Flanders Drive Potential Pocket Park



Black Mtn. Road Park Opportunity

- City-owned land [open space]



Fallow Rail Linear Park

- Privately-owned land
- Trail / Linear Park opportunity



Rim Trail

- Privately-owned land and City-owned Open Space
- Trail / Linear Park opportunity



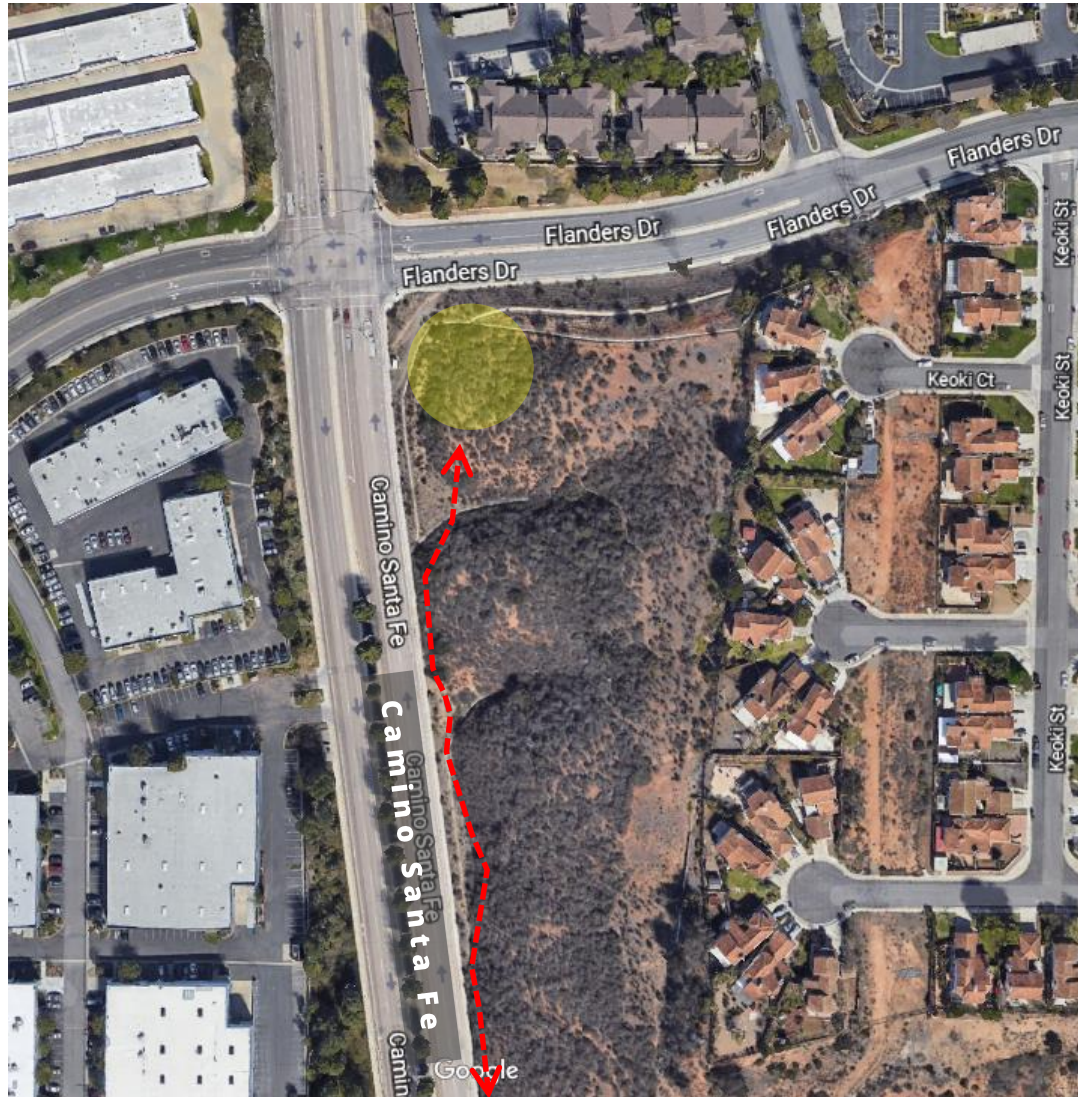
Trail-Head & Connection to Los Penasquitos Canyon

- City-owned Open Space
- Trail Connection(s)



Flanders Drive Potential Pocket Park

- City-owned land
- Topography-challenged
- Connection to 3Roots park and trail to the south?



Existing Facilities:

- Review existing facilities for major repairs and upgrades.

New Facilities:

- Complete a vacant lands analysis
- Follow-up on remaining community-suggested new parks, trails and other recreation opportunity sites.

Draft Parks & Recreation Goals & Policies

MIRA MESA COMMUNITY PLAN UPDATE

Parks & Recreation

GOALS

- A balanced system of recreational facilities and services that will enrich the lives of Mira Mesa residents of all age groups.
- Interconnected canyons, hillsides, fallow railroads, parks and open space network with opportunities for outdoor recreation.
- Preservation of areas notable for scenic, natural or cultural attractions.
- Innovative park strategies and park equivalencies.
- Parks and recreational facilities that meet General Plan population-based park standards.

POLICIES

- Pursue the development of school sites for park purposes in accordance with Council Policy 700-35.
- Develop each neighborhood park in a unique manner to meet neighborhood needs; to take advantage of the site's topography, trees, view and other natural features; and to tie into an open space network and path system where the opportunity exists.
- Pursue land acquisition for the creation of public parks, with an effort to locate parkland on sites within villages or districts that promote connectivity, accessibility, safety, public health, and sustainability.
- Encourage new infill developments throughout the community and especially in Transit Priority Areas (TPA's) to satisfy population-based park requirements by incorporating parks or park equivalencies on site (either privately or publicly owned).

- Sent Draft Goals and Policies to the Advisory Committee by Feb. 14, 2019
- Obtain feedback on this Initial Parks and Open Space Draft Presentation today.
- Park deficit number discussion (requested by the chair)
 - Current park stat's as follows:*
 - Park acreage: 147 acres, required 213 acres
 - Rec Centers: 33,400 sf, required 51,700 sf
 - Aquatic Complex: 0.64 of a complex*, required 1.52 (*shared with Scripps Ranch community)
 - A report on estimated future deficits will be discussed with group at next meeting.
- Next meeting to report back on park planning efforts later this summer.



- A balanced system of recreational facilities and services that will enrich the lives of Mira Mesa residents of all age groups.
- An interconnected system of parks and recreational facilities, trails, and open spaces.
- Innovative park strategies that will provide parks and recreational facilities where residential development is being proposed.
- Provision of community and neighborhood park facilities in accordance with General Plan standards and concurrent with community growth.
- Neighborhood parks that are located within convenient walking distance for area residents.

For more information please visit:

www.PlanMiraMesa.org

Mira Mesa Community Plan Update: Parks & Recreation

Planning Department

Feb. 21, 2019

6:10 pm to 7:00 pm – Mira Mesa Library