



# **Opportunities for Future Parks & Recreation Facilities**

CPG Subcommittee Meeting  
September 8, 2017

- **3:00 – 3:45**

Presentation:

1. Workshop Results Summary
2. Park & Recreation Facilities Opportunities
3. Urban Park Strategies & Character





# Park & Recreation Facilities Opportunities



# Workshop Results/Summary

- Provide Major Parks (20+acres) & Neighborhood Parks (3-13 acres)
- Location opportunities
- Publically owned sites
  - Post Office, Public Utility Department parcel
- New Recreation Centers
  - Qualcomm, River Walk
- New Aquatic Complex
  - Qualcomm, Riverwalk
- Highest Park Types
  - Trails, Joint Use, Resource based parks

# Population-Based Park Standards

<u>Current Population</u>	<u>25,018</u>
<u>Park requirement</u>	<u>70 acres</u>
<u>Current Parks</u>	<u>23.5 acres</u>
<u>Current Deficit</u>	<u>46.5 acres</u>

## Existing Parks

- San Diego River Pathway 5.5 acres
- Sefton Field 8 acres
- Civita Park 10 acres

# Population-Based Park Standards

<u>Current Population</u>	25,018
<u>Recreation Centers</u>	0
<u>Aquatic Complex</u>	0
<u>Recreation Center Deficit</u>	1
<u>Aquatic Complex Deficit</u>	0.5

# Population-Based Park Standards

<u>Proposed Population</u>	65,072
<u>Park requirement</u>	182 acres
<u>Current &amp; Planned Parks</u>	78.5 acres
<u>Projected Deficit</u>	103.5 acres

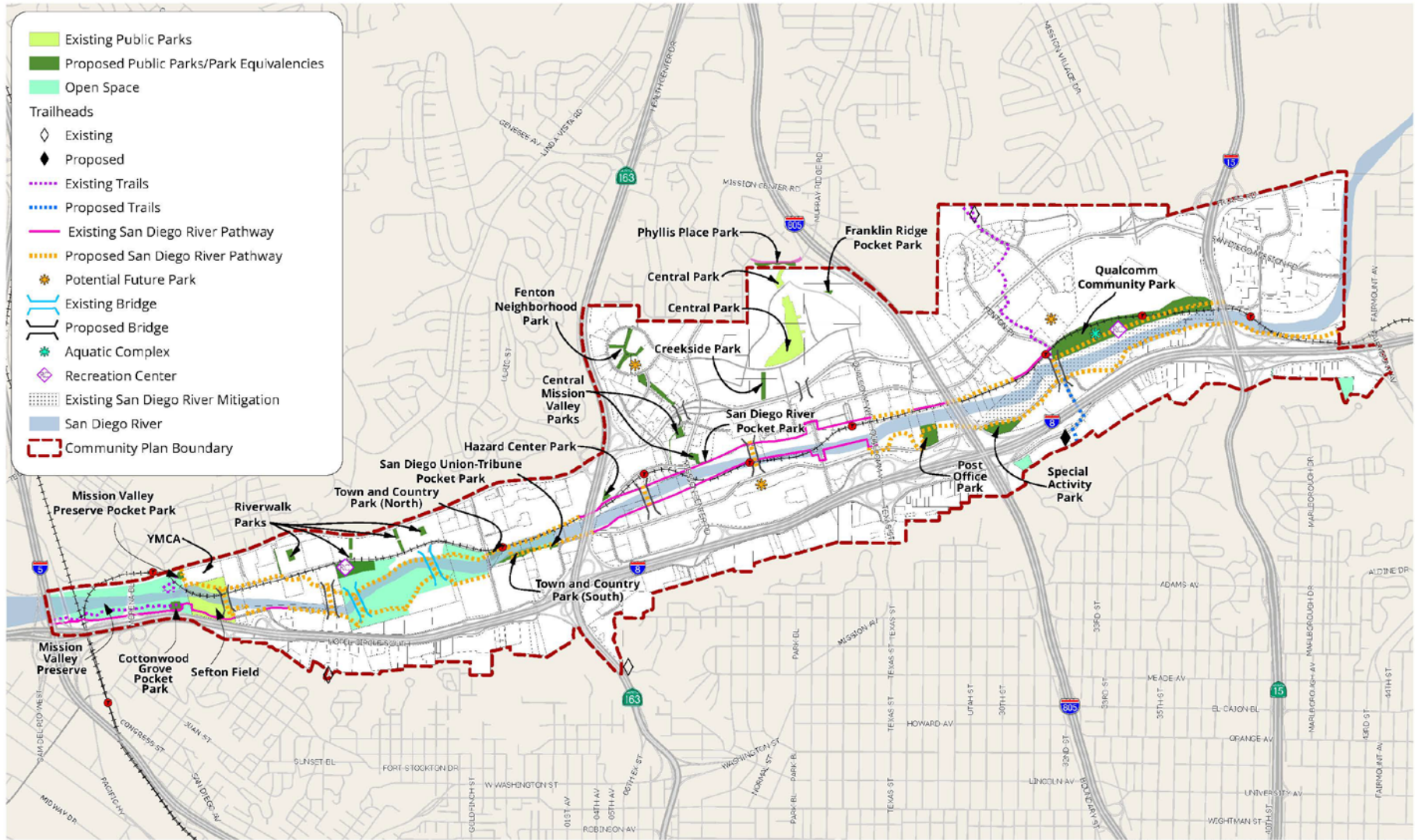
# Population-Based Park Standards

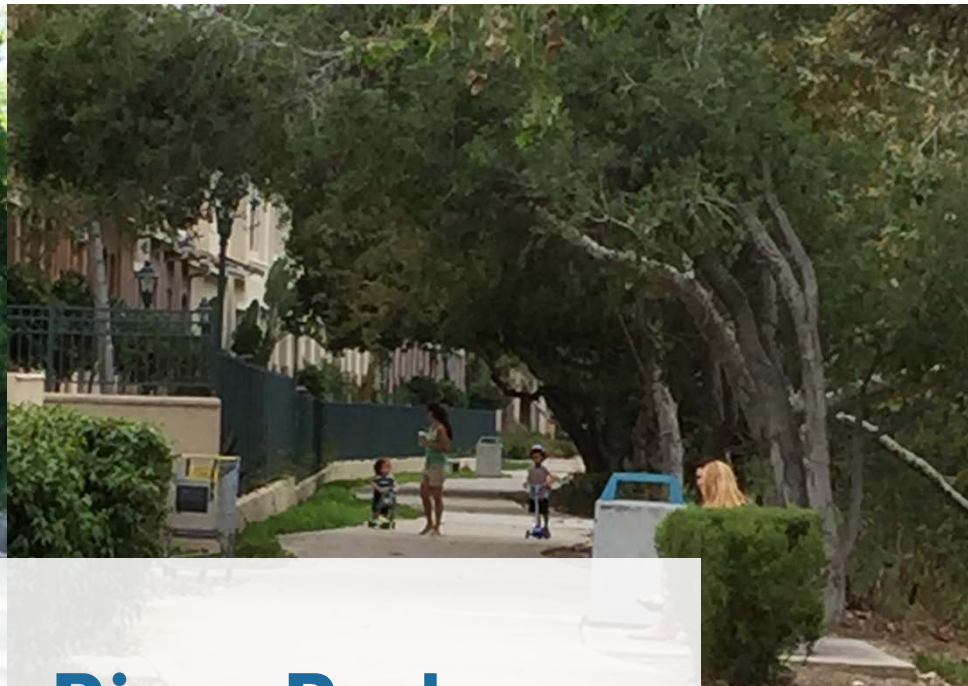
<u>Proposed Population</u>	65,072
<u>Recreation Center</u>	44,250 sf
<u>Aquatic Complex</u>	1.3
<u>Projected Recreation Center Deficit</u>	0
<u>Projected Aquatic Complex Deficit</u>	0

## Planned Facilities

- Mission Valley Rec Center 20,000 sf
- Mission Valley Aquatic Complex 1.0

# Park & Recreation Facilities Opportunities





# San Diego River Park

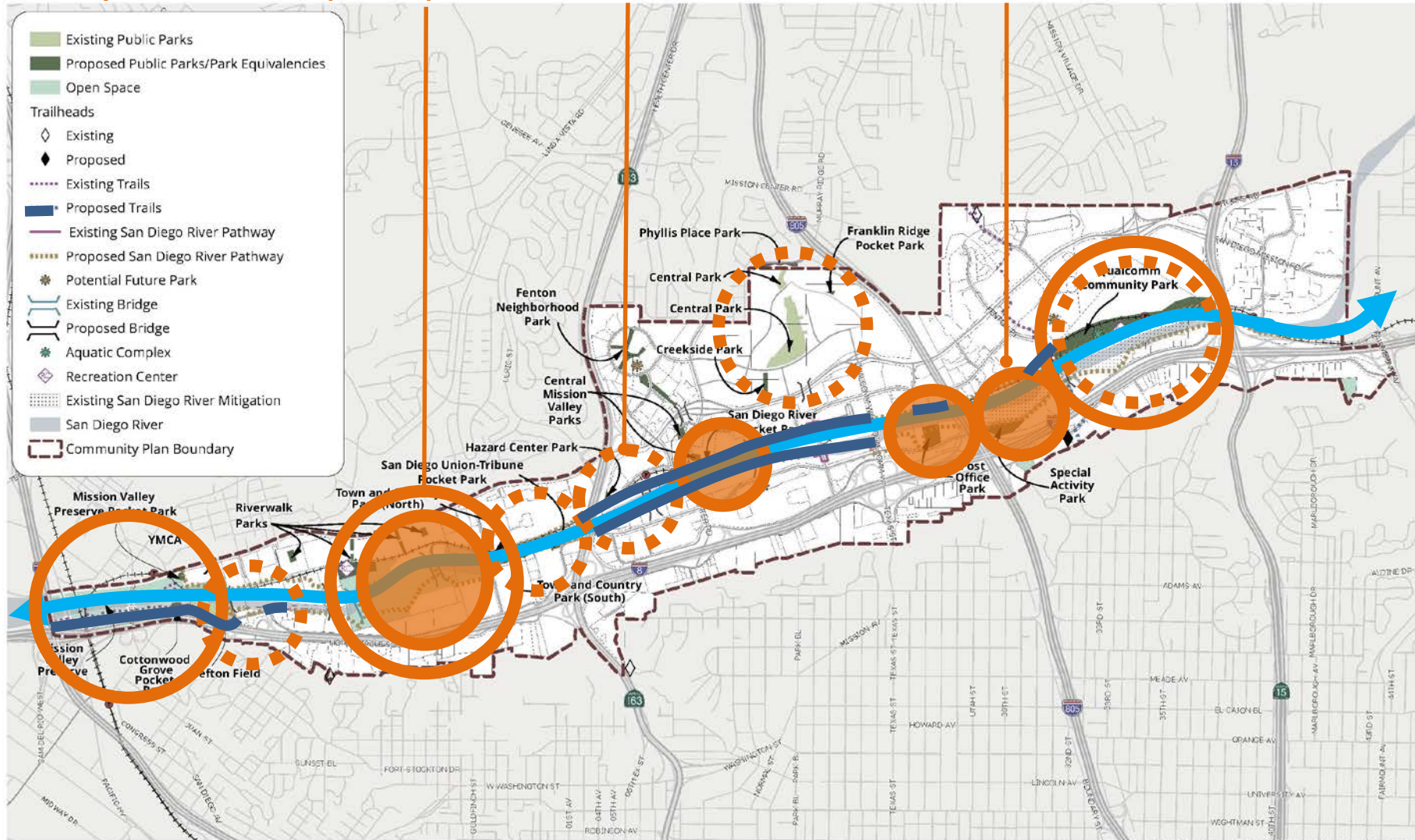


# San Diego River Park

## Major Parks & Open Space

## Existing & Planned Parks

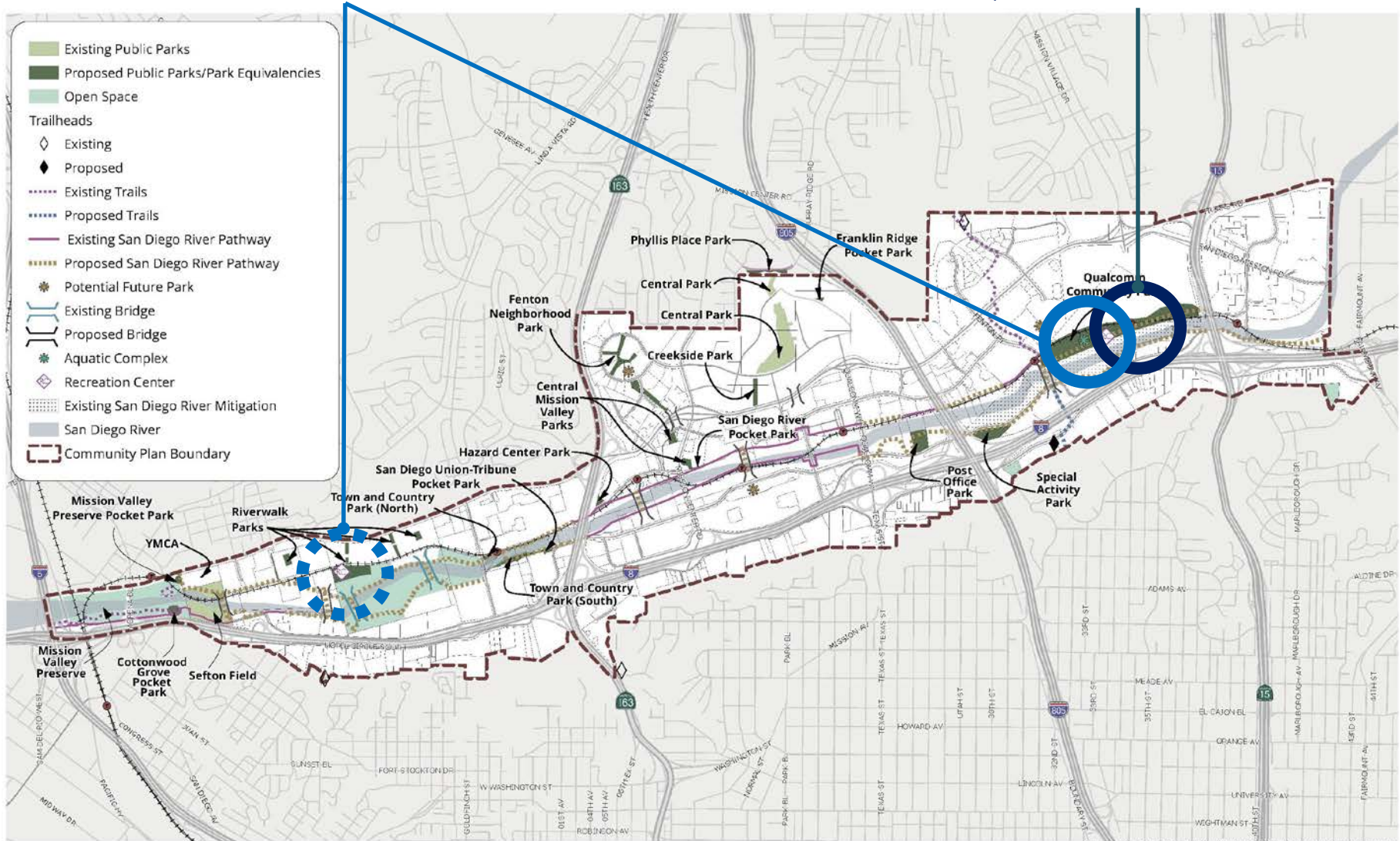
## Future Parks



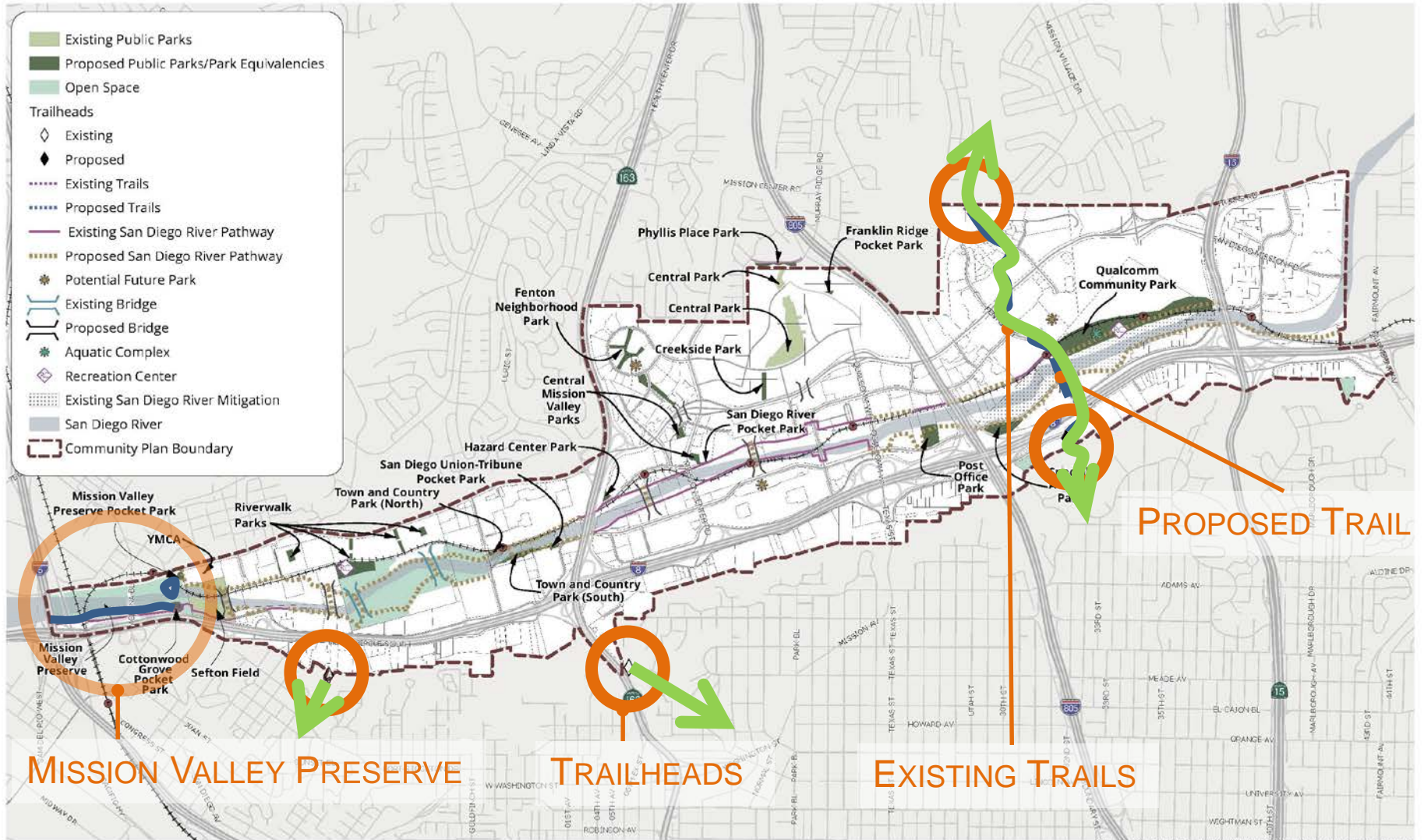
# Aquatic Complex & Recreation Centers

## Recreation Centers

## AQUATIC COMPLEX



# Trails

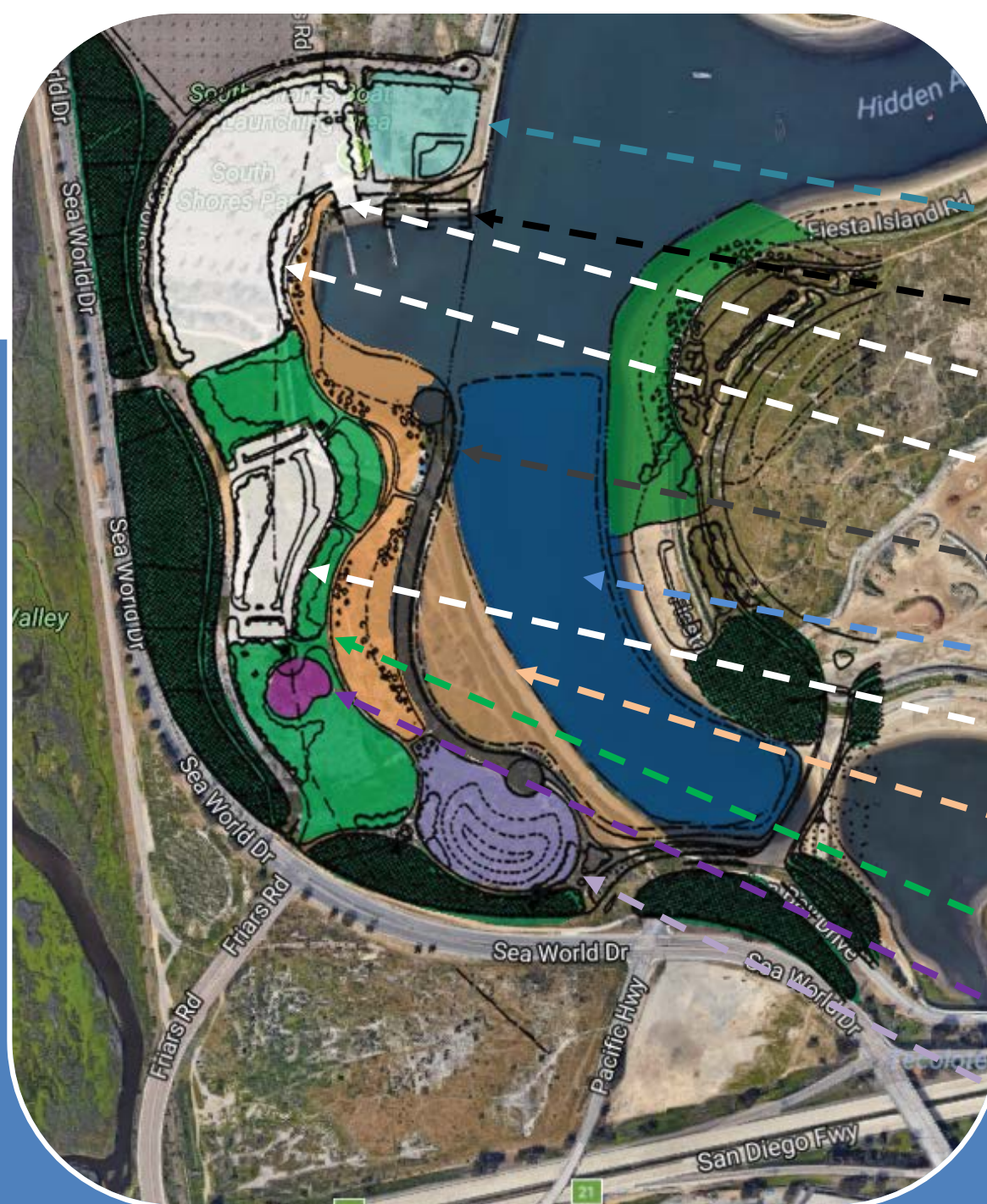




# Urban Park Strategies & Character



# Mission Bay Park



1- Potential Ski Club Lease Area

2- Potential Day Use Marina

3- Existing Boat Ramp

4- Boat Trailer Parking

5- Promenade

6- Personal Watercraft Area

7- Parking

8- Beach and Sand Courts

9- Parkland

10- Playground

11- Amphitheatre

# Urban Park Strategies

*1- The Canyon*

*2- Landscaped Terraces*

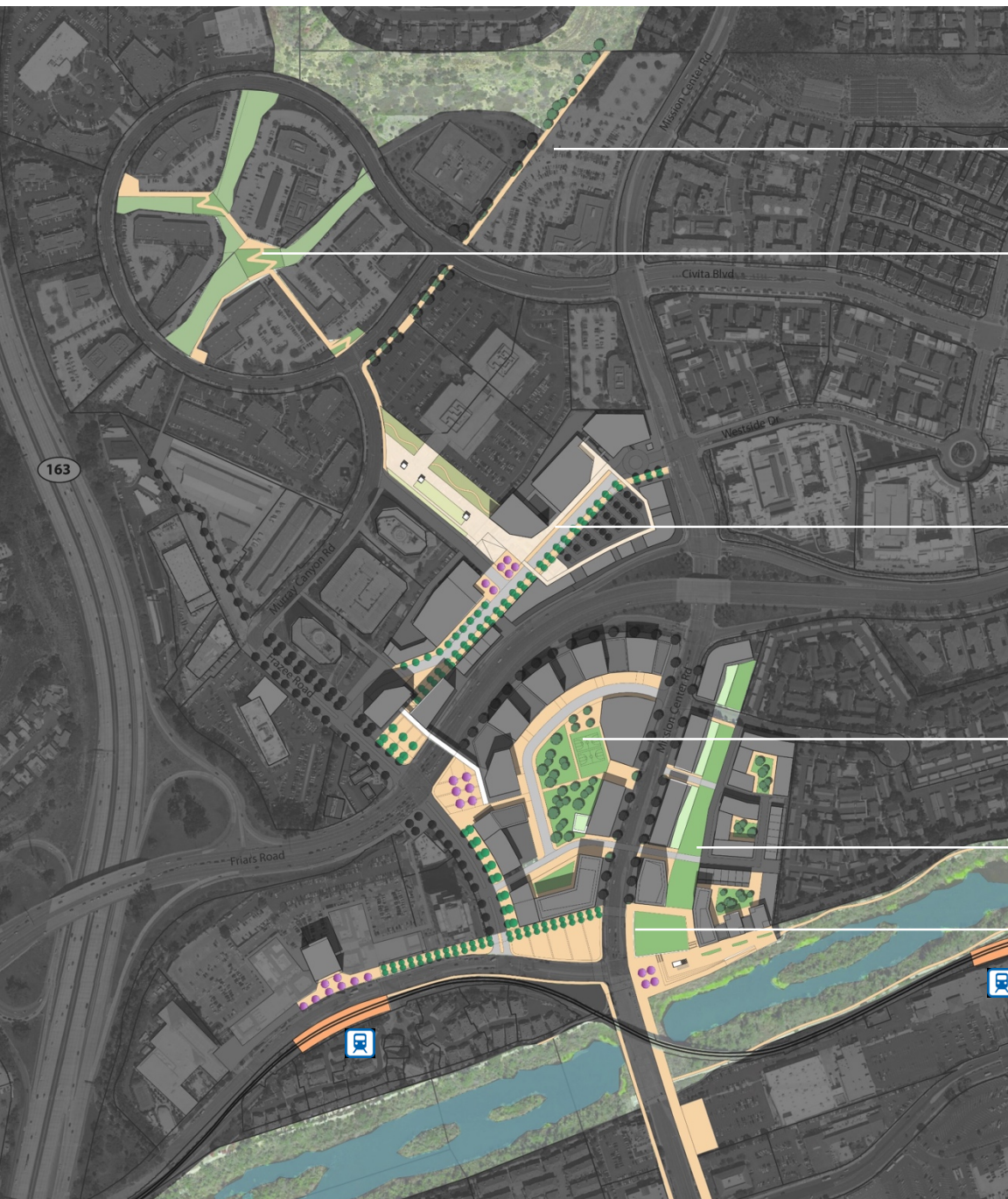
*3- Interior Commercial Street*

*4- Recreation Commons*

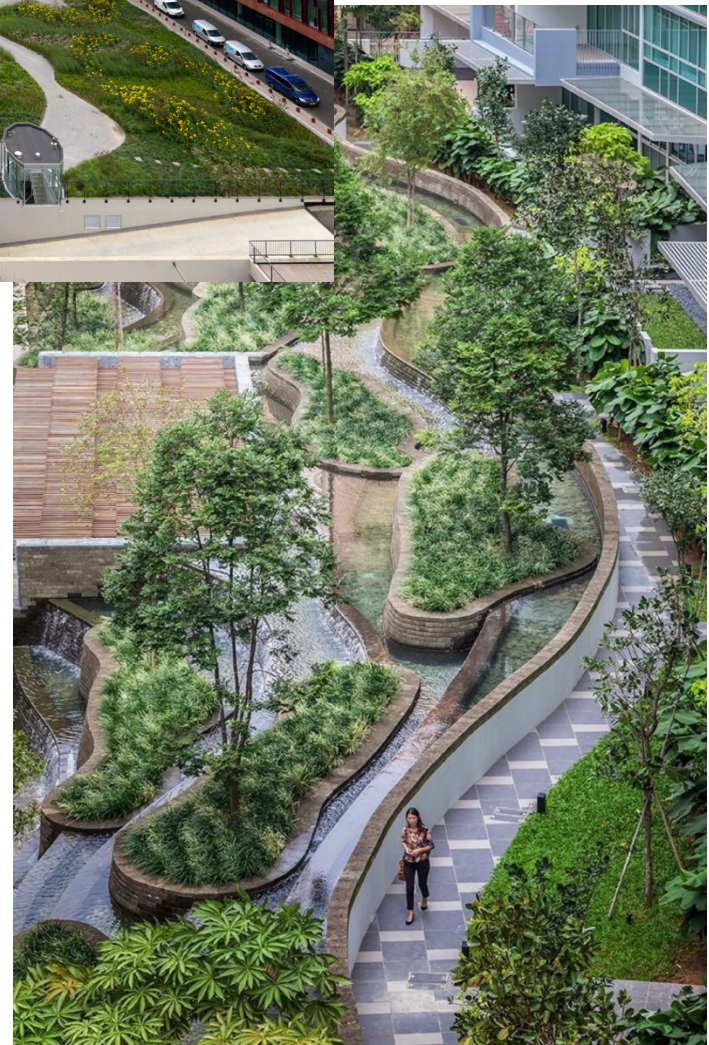
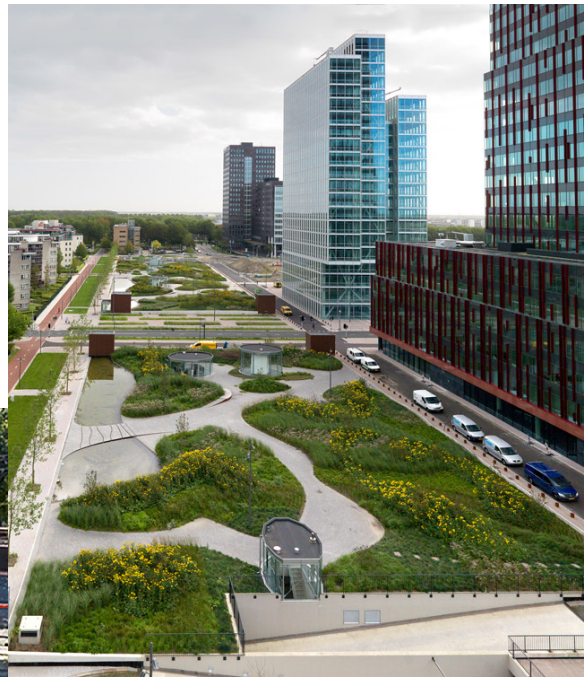
*5- Residential Commons - Greenway*

*6- Bridge Anchor / River Highlight*

*7- Bridge Trolley Stations with Public realm*



# Linear Parks



# Renew and Relax



# Urban Park Amenities



# Hillsides





## Discussion



# **Parks & Recreation Facilities Opportunities**

CPG Subcommittee Meeting

September 8, 2017