



THE CITY OF SAN DIEGO
General Plan
Mobility Element

**Existing and Planned
Park and Open Space**

Dedicated and designated planned open space and park information represented here may not be the current land use, but a best estimate based upon the SANDAG and SanGIS generalized existing land use data and City of San Diego park and open space data.

Planned Transit Service

Planned higher frequency rail (Trolley and Coaster) and Bus Rapid Transit (BRT) and Rapid Bus routes represent the "Reasonably Expected" transit network from the adopted San Diego Association of Governments 2030 Regional Transportation Plan (2007) and a City recommended future SR-56 corridor transit route. The BRT routes and the Trolley Mid-Coast route represent new transit routes. The existing rail and Bus Rapid routes represent improved operating frequencies above the existing frequencies. Each route is planned to operate every 15 minutes or better during the morning and evening commute periods except for the Coaster, which is planned to operate every 20 minutes.

Existing Transit Service

Existing transit service represents the adopted Metropolitan Transit System 2006 Comprehensive Operational Analysis transit network. Higher frequency bus and trolley service represents the urban network of single routes traveling on key corridors every 15 minutes or better. Lower frequency service represents the remaining bus transit network.

Figure ME-1
**Transit
Land Use
Connections**

**Planned High
Frequency Transit
Service**

Bus Rapid Transit,
Rail & Rapid Bus

**Existing Transit
Service**

Higher Frequency Lower Frequency
Bus Service Bus Service

Existing/Planned Park & Open Space

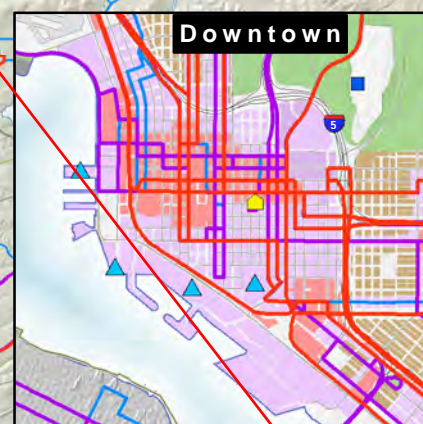
Park, Open Space, and Recreation

Planned Land Use

Multi-Family Commercial Single Family
Multiple Use Residential
and Other Uses

Activity Centers

Government Centers Public Library
Major Attractions High Schools
Post Offices Hospitals
Military Facilities Universities & Colleges



Source: SANDAG 2007 RTP; MTS 2007 Routes

0 1 2 4 6 Miles

THIS MAP IS PROVIDED WITHOUT WARRANTY OF ANY KIND, EITHER EXPRESS OR IMPLIED, INCLUDING BUT NOT LIMITED TO THE IMPLIED WARRANTIES OF MERCHANTABILITY AND FITNESS FOR A PARTICULAR PURPOSE. Copyright SanGIS. All Rights Reserved.



THE CITY OF SAN DIEGO
General Plan
Mobility Element

**Existing and Planned
Park and Open Space**

Dedicated and designated planned open space and park information represented here may not be the current land use, but a best estimate based upon the SANDAG and SanGIS generalized existing land use data and City of San Diego park and open space data.

Planned Transit Service

Planned higher frequency rail (Trolley and Coaster) and Bus Rapid Transit (BRT) and Rapid Bus routes represent the "Reasonably Expected" transit network from the adopted San Diego Association of Governments 2030 Regional Transportation Plan (2007) and a City recommended future SR-56 corridor transit route. The BRT routes and the Trolley Mid-Coast route represent new transit routes. The existing rail and Bus Rapid routes represent improved operating frequencies above the existing frequencies. Each route is planned to operate every 15 minutes or better during the morning and evening commute periods except for the Coaster, which is planned to operate every 20 minutes.

Existing Transit Service

Existing transit service represents the adopted Metropolitan Transit System 2006 Comprehensive Operational Analysis transit network. Higher frequency bus and trolley service represents the urban network of single routes traveling on key corridors every 15 minutes or better. Lower frequency service represents the remaining bus transit network.

Figure ME-1
Transit
Land Use
Connections

**Planned High
Frequency Transit
Service**

✓ Bus Rapid Transit,
Rail & Rapid Bus

**Existing Transit
Service**

Higher Frequency Lower Frequency
✓ Bus Service ✓ Bus Service

Existing/Planned Park & Open Space

■ Park, Open Space, and Recreation

Planned Land Use

■ Multi-Family ■ Commercial ■ Single Family
 ■ Multiple Use Residential
 and Other Uses

Activity Centers

■ Government Centers ■ Public Library
■ Major Attractions ■ High Schools
■ Post Offices ■ Hospitals
■ Military Facilities ■ Universities & Colleges

Source: SANDAG 2007 RTP; MTS 2007 Routes

0 1 2 4 6 Miles



SanGIS

THIS MAP IS PROVIDED WITHOUT WARRANTY OF ANY KIND, EITHER EXPRESS OR IMPLIED, INCLUDING BUT NOT LIMITED TO, THE IMPLIED WARRANTIES OF MERCHANTABILITY AND FITNESS, FOR A PARTICULAR PURPOSE. Copyright SanGIS. All Rights Reserved.



THE CITY OF SAN DIEGO
General Plan
Mobility Element

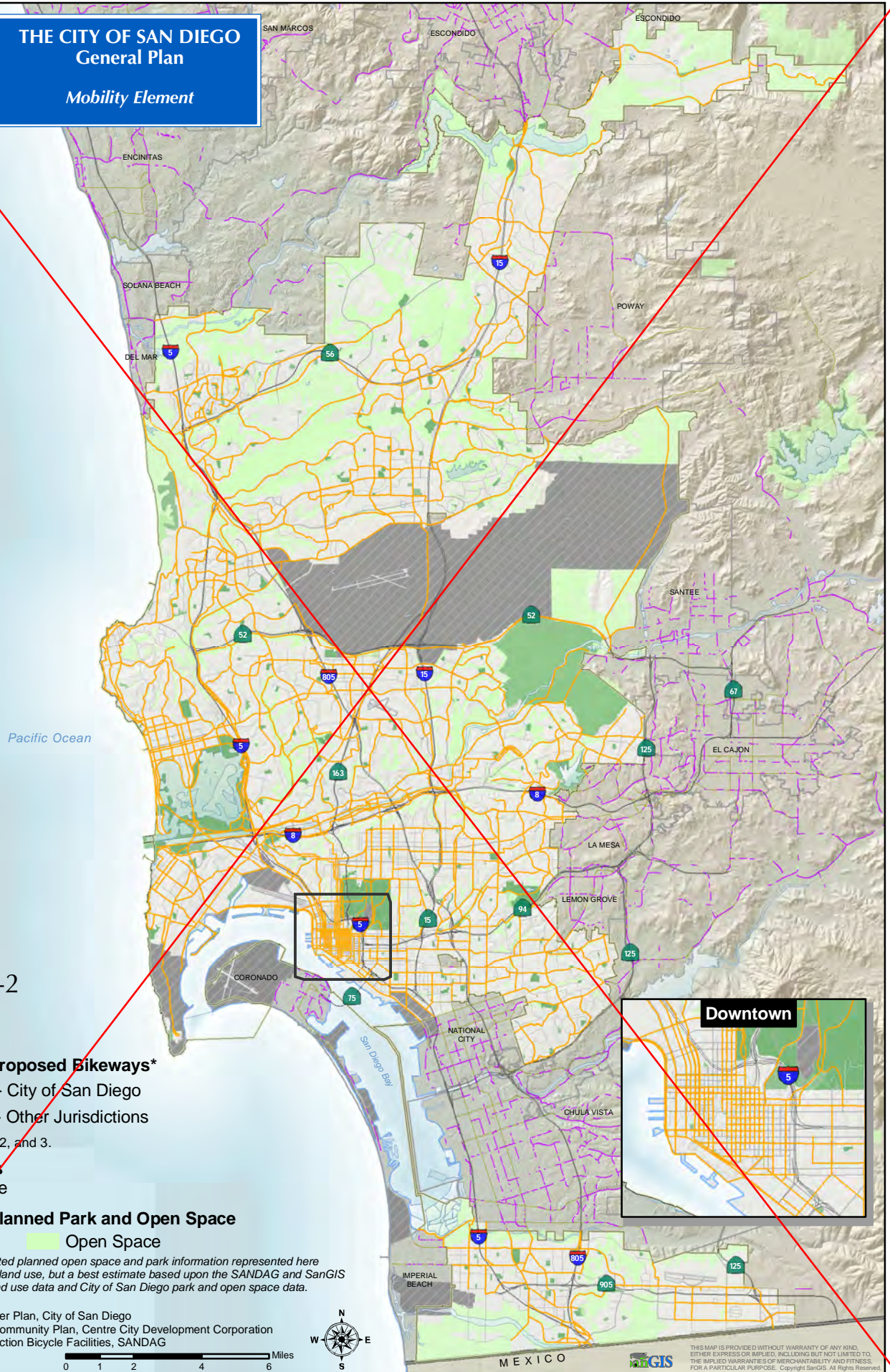


Figure ME-2
Bikeways

Existing and Proposed Bikeways*

- Bikeways- City of San Diego
- Bikeways- Other Jurisdictions

*Includes classes 1, 2, and 3.

Other Features

- Military Use

Existing and Planned Park and Open Space

- Park
- Open Space

Dedicated and designated planned open space and park information represented here may not be the current land use, but a best estimate based upon the SANDAG and SanGIS generalized existing land use data and City of San Diego park and open space data.

Sources: Bicycle Master Plan, City of San Diego
Downtown Community Plan, Centre City Development Corporation
Other Jurisdiction Bicycle Facilities, SANDAG



0 1 2 4 6 Miles



THIS MAP IS PROVIDED WITHOUT WARRANTY OF ANY KIND, EITHER EXPRESS OR IMPLIED, INCLUDING BUT NOT LIMITED TO, THE IMPLIED WARRANTIES OF MERCHANTABILITY AND FITNESS, FOR A PARTICULAR PURPOSE. Copyright SanGIS. All Rights Reserved.



THE CITY OF SAN DIEGO General Plan

Mobility Element

Figure ME-2

Bikeways

Existing and Proposed Bikeways*

- Bikeways- City of San Diego
- Bikeways- Other Jurisdictions

*Includes classes 1, 2, and 3.

Other Features

- Military Use

Existing and Planned Park and Open Space

- Park
- Open Space

Dedicated and designated planned open space and park information represented here may not be the current land use, but a best estimate based upon the SANDAG and SanGIS generalized existing land use data and City of San Diego park and open space data.

Sources: Bicycle Master Plan, City of San Diego
Downtown Community Plan, Centre City Development Corporation
Other Jurisdiction Bicycle Facilities, SANDAG

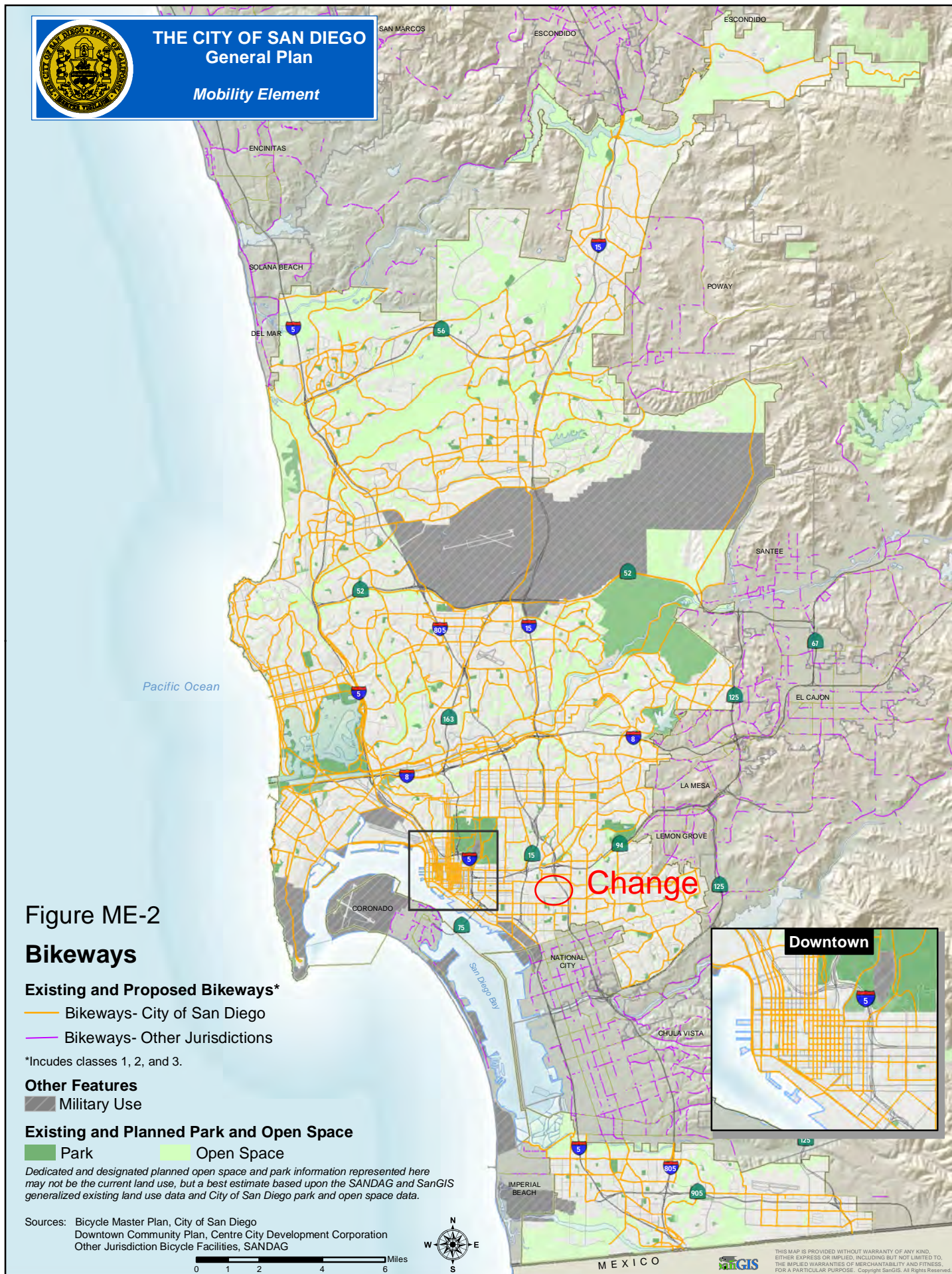
0 1 2 4 6 Miles



MEXICO



THIS MAP IS PROVIDED WITHOUT WARRANTY OF ANY KIND, EITHER EXPRESS OR IMPLIED, INCLUDING BUT NOT LIMITED TO, THE IMPLIED WARRANTIES OF MERCHANTABILITY AND FITNESS, FOR A PARTICULAR PURPOSE. Copyright SanGIS. All Rights Reserved.





THE CITY OF SAN DIEGO
General Plan
Mobility Element

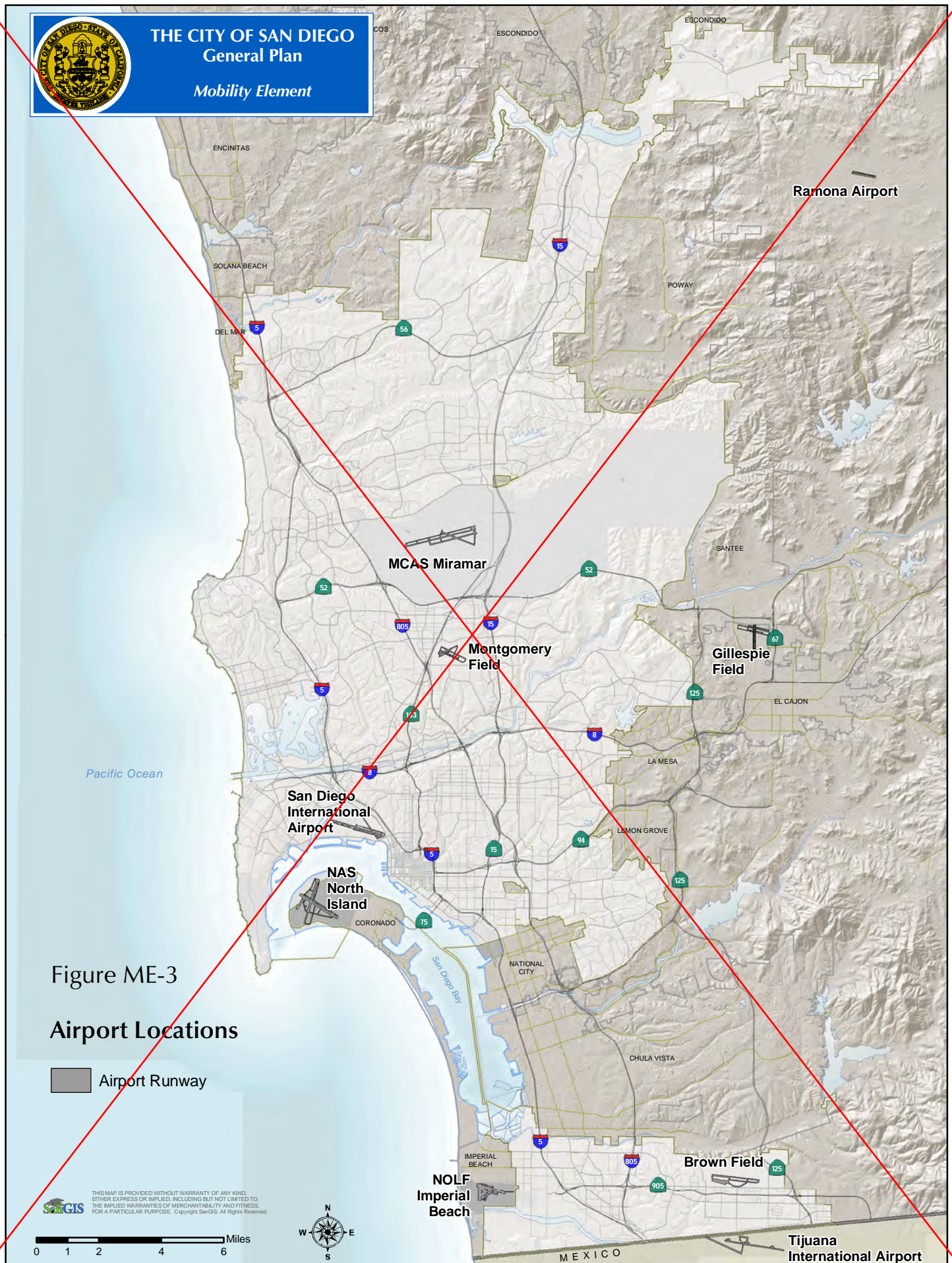


Figure ME-3
Airport Locations

Airport Runway

THIS MAP IS PROVIDED WITHOUT WARRANTY OF ANY KIND, EITHER EXPRESS OR IMPLIED, INCLUDING BUT NOT LIMITED TO, THE IMPLIED WARRANTIES OF MERCHANTABILITY AND FITNESS, FOR A PARTICULAR PURPOSE. Copyright SanGIS, All Rights Reserved.





THE CITY OF SAN DIEGO
General Plan
Mobility Element

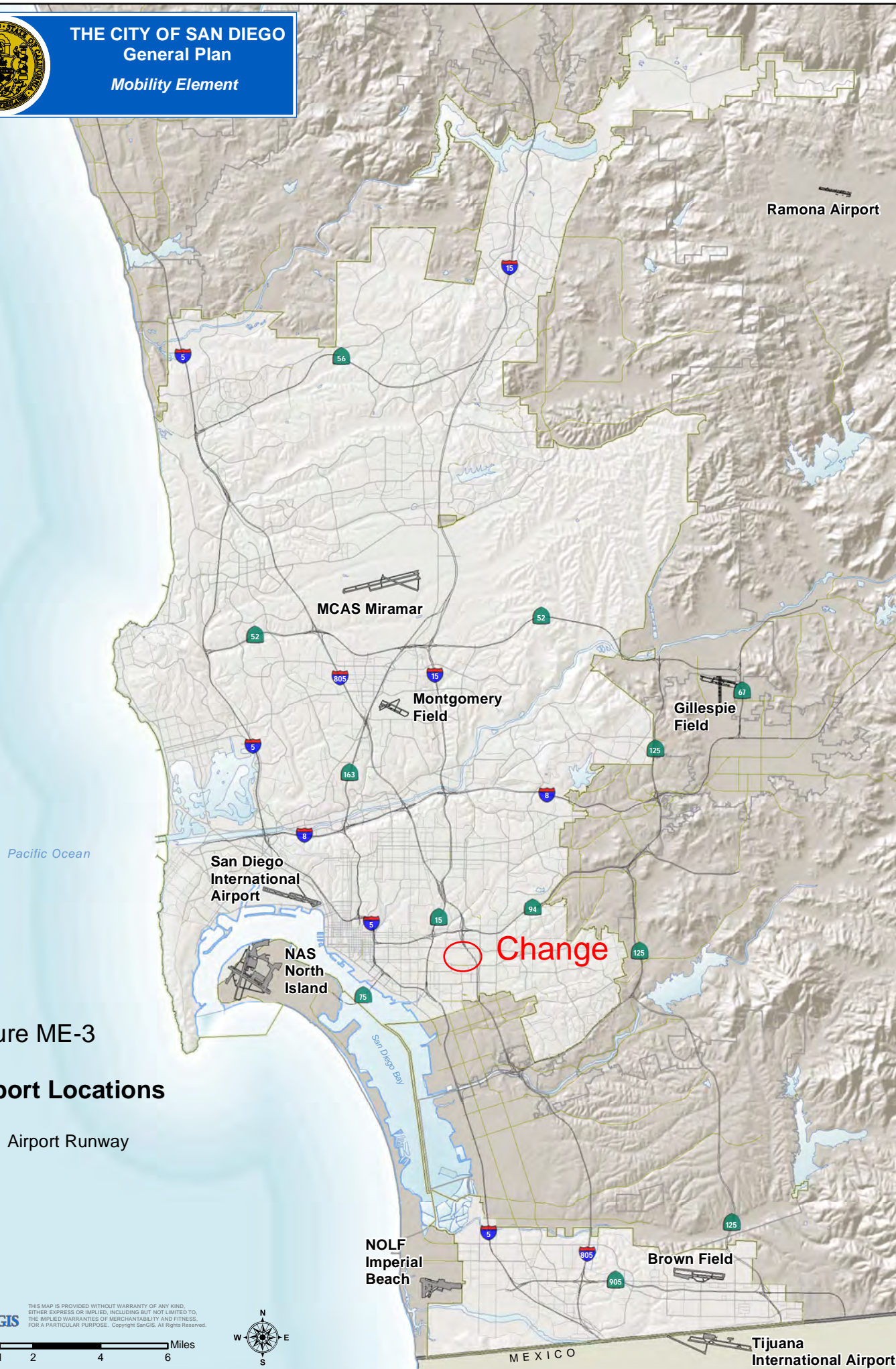


Figure ME-3

Airport Locations

 Airport Runway



THIS MAP IS PROVIDED WITHOUT WARRANTY OF ANY KIND,
EITHER EXPRESS OR IMPLIED, INCLUDING BUT NOT LIMITED TO,
THE IMPLIED WARRANTIES OF MERCHANTABILITY AND FITNESS,
FOR A PARTICULAR PURPOSE. Copyright SanGIS. All Rights Reserved.

0 1 2 4 6 Miles





THE CITY OF SAN DIEGO General Plan

Mobility Element

Figure ME-4

Intermodal Freight Facilities

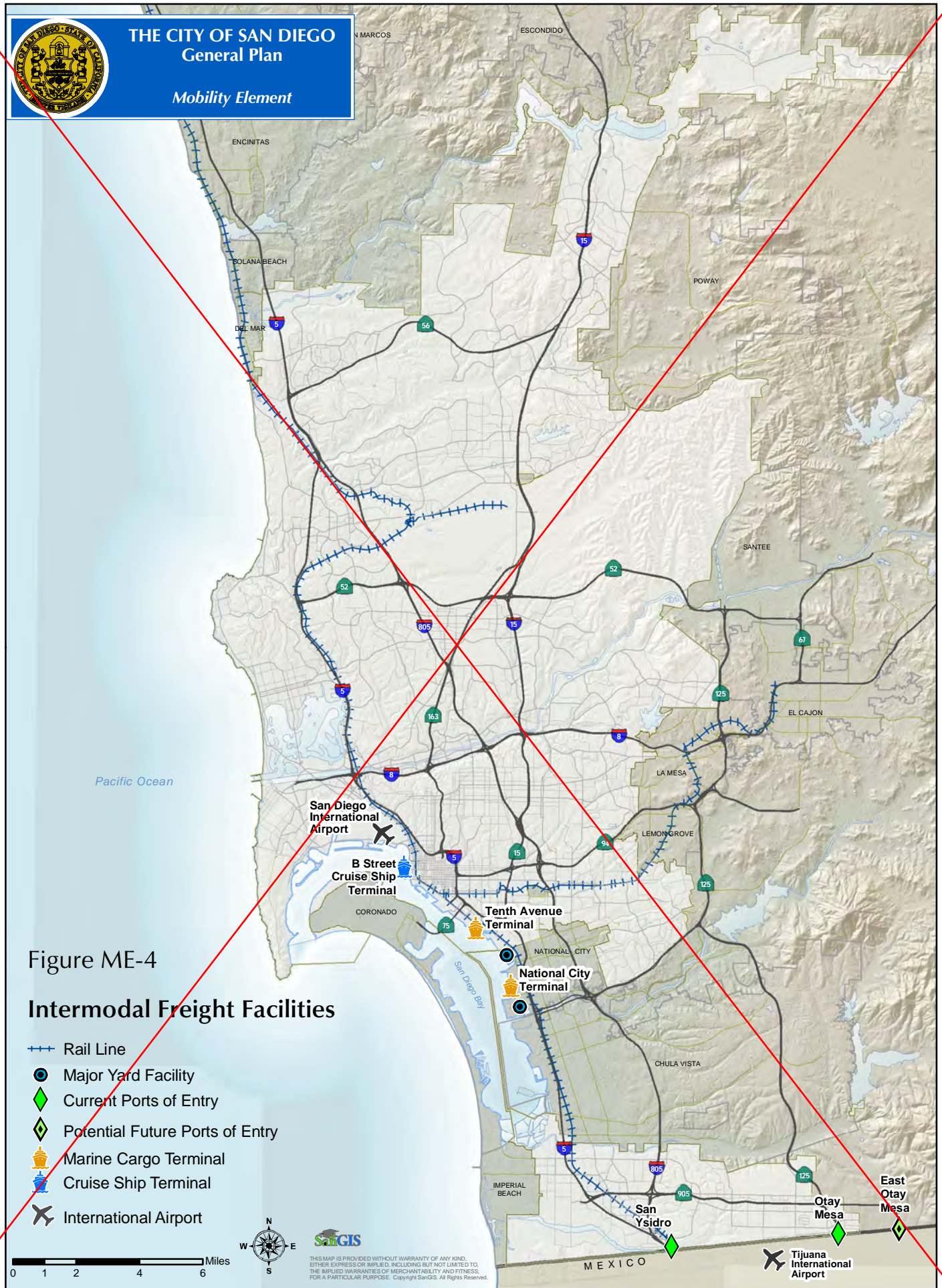
- Rail Line
- Major Yard Facility
- ◆ Current Ports of Entry
- ◆ Potential Future Ports of Entry
- 🚢 Marine Cargo Terminal
- 🚢 Cruise Ship Terminal
- ✈ International Airport

0 1 2 4 6 Miles



SANGIS

THIS MAP IS PROVIDED WITHOUT WARRANTY OF ANY KIND, EITHER EXPRESS OR IMPLIED, INCLUDING BUT NOT LIMITED TO, THE IMPLIED WARRANTIES OF MERCHANTABILITY AND FITNESS, FOR A PARTICULAR PURPOSE. Copyright SanGIS. All Rights Reserved.





THE CITY OF SAN DIEGO General Plan

Mobility Element

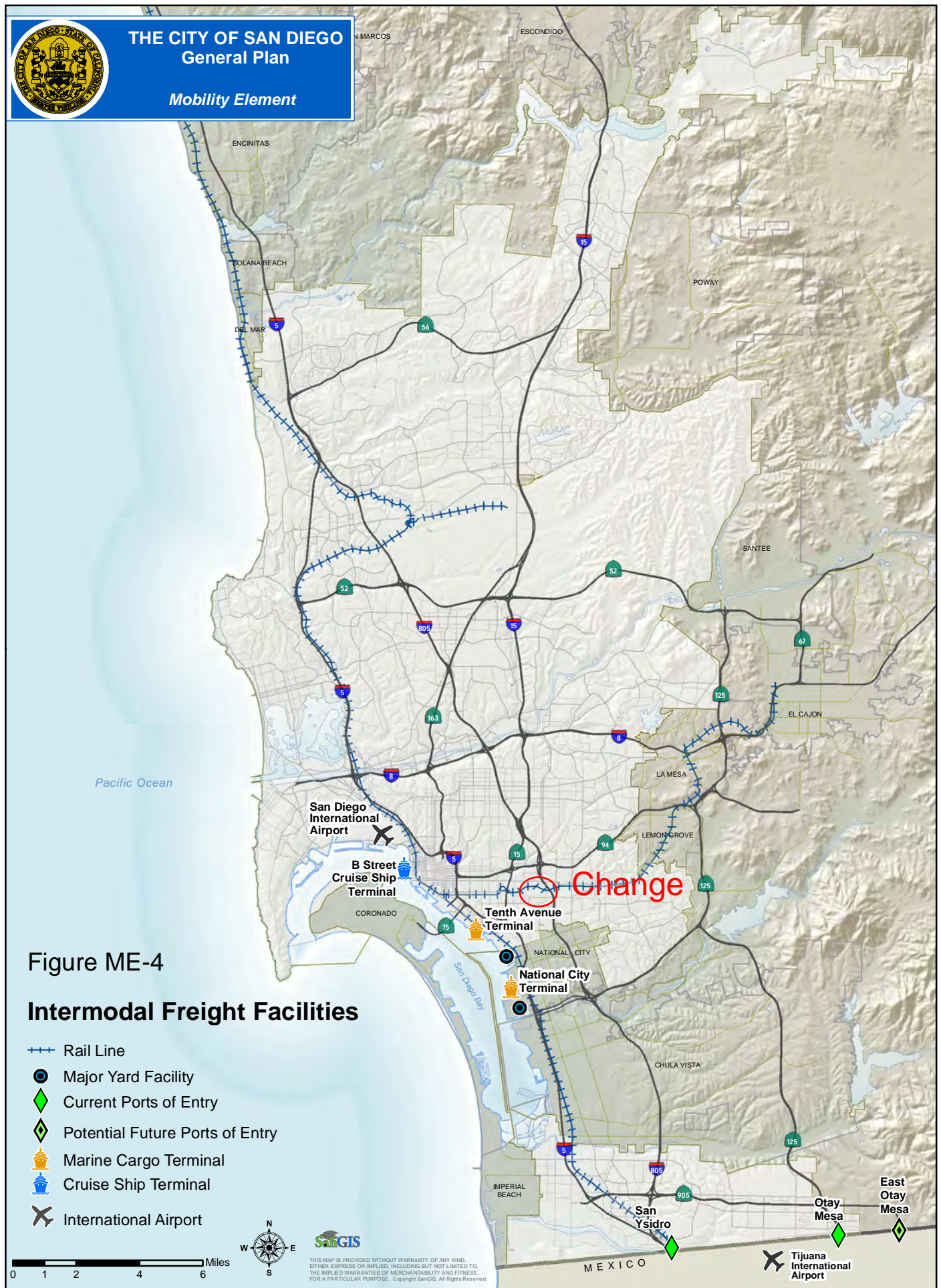


Figure ME-4

Intermodal Freight Facilities

- Rail Line
- Major Yard Facility
- ◆ Current Ports of Entry
- ◆ Potential Future Ports of Entry
- 🚢 Marine Cargo Terminal
- 🚢 Cruise Ship Terminal
- ✈ International Airport

0 1 2 4 6 Miles



SAN GIS

THIS MAP IS PROVIDED WITHOUT WARRANTY OF ANY KIND, EITHER EXPRESS OR IMPLIED, INCLUDING BUT NOT LIMITED TO, THE IMPLIED WARRANTIES OF MERCHANTABILITY AND FITNESS, FOR A PARTICULAR PURPOSE. Copyright SanGIS. All Rights Reserved.

Tijuana International Airport








THE CITY OF SAN DIEGO
General Plan
*Public Facilities, Services
and Safety Element*

Pacific Ocean

Figure PF-1

Planning Areas by Financing Type

-  Facilities Benefit Assessment
-  Development Impact Fee
-  Development Agreement
-  Future Urbanizing Area
-  Other

0 1 2 4 6 Miles



THIS MAP IS PROVIDED WITHOUT WARRANTY OF ANY KIND, EITHER EXPRESS OR IMPLIED, INCLUDING BUT NOT LIMITED TO, THE IMPLIED WARRANTIES OF MERCHANTABILITY AND FITNESS, FOR A PARTICULAR PURPOSE. Copyright SARGIS. All Rights Reserved.



THE CITY OF SAN DIEGO General Plan

Public Facilities, Services and Safety Element

Pacific Ocean

Change

Figure PF-1
**City of San Diego
Community Planning Areas
by Financing Type**

- Facilities Benefit Assessment
- Development Impact Fee
- Development Agreement
- Future Urbanizing Area
- Other

0 1 2 4 6 Miles



MEXICO



THIS MAP IS PROVIDED WITHOUT WARRANTY OF ANY KIND, EITHER EXPRESS OR IMPLIED, INCLUDING BUT NOT LIMITED TO, THE IMPLIED WARRANTIES OF MERCHANTABILITY AND FITNESS, FOR A PARTICULAR PURPOSE. Copyright SANGIS. All Rights Reserved.



THE CITY OF SAN DIEGO General Plan

Public Facilities, Services and Safety Element

Figure PF-3

Fire and Lifeguard Facilities

City of San Diego Fire Stations

- Existing
- Proposed

Outside City of San Diego Fire Stations

- ◆ Existing
- ◆ Proposed

City of San Diego Lifeguard Stations

- ⊕ Existing

0 1 2 4 6 Miles

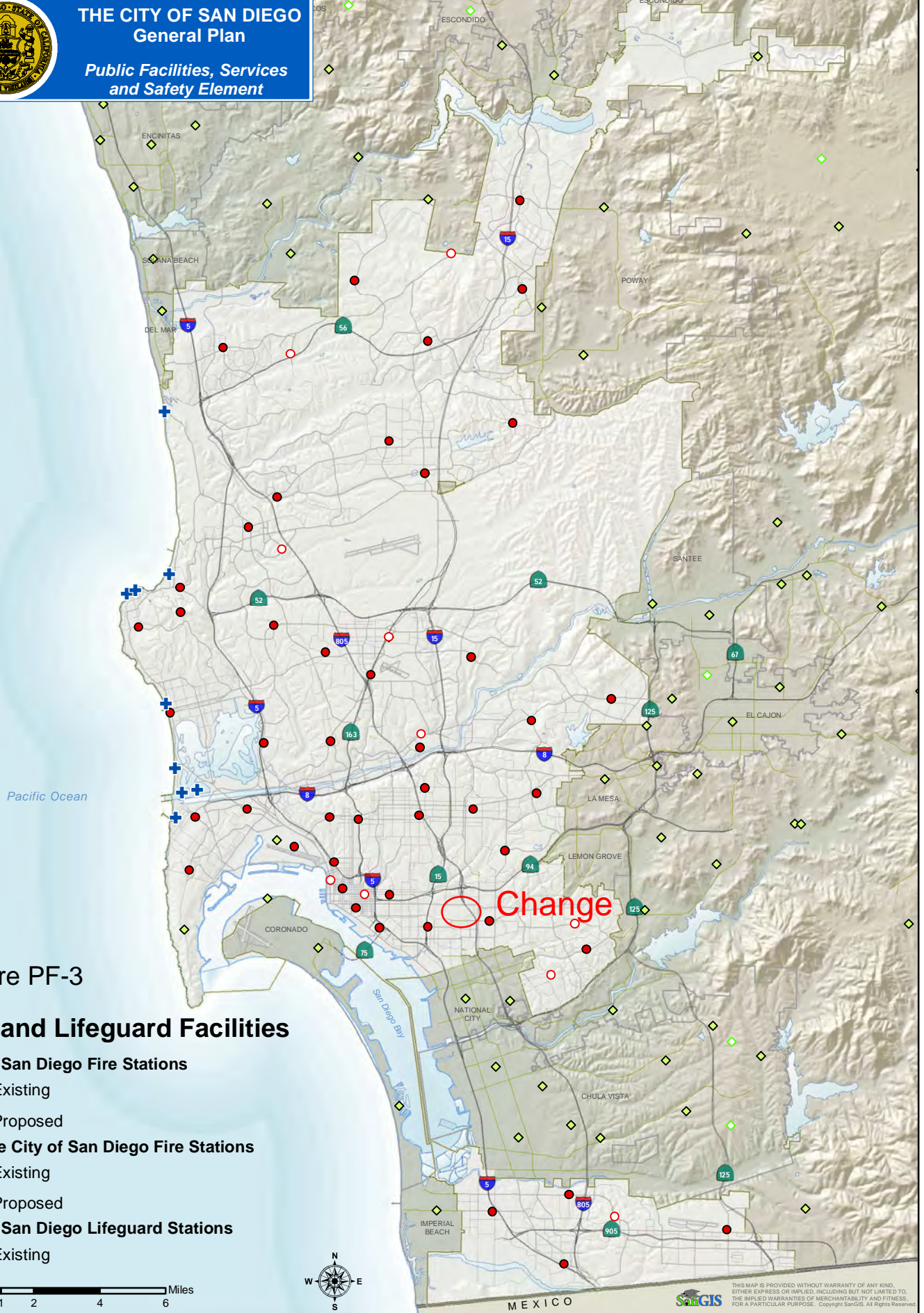


THIS MAP IS PROVIDED WITHOUT WARRANTY OF ANY KIND, EITHER EXPRESS OR IMPLIED, INCLUDING BUT NOT LIMITED TO, THE IMPLIED WARRANTIES OF MERCHANTABILITY AND FITNESS, FOR A PARTICULAR PURPOSE. Copyright SARGIS. All Rights Reserved.



THE CITY OF SAN DIEGO General Plan

Public Facilities, Services and Safety Element





THE CITY OF SAN DIEGO General Plan

Public Facilities, Services and Safety Element

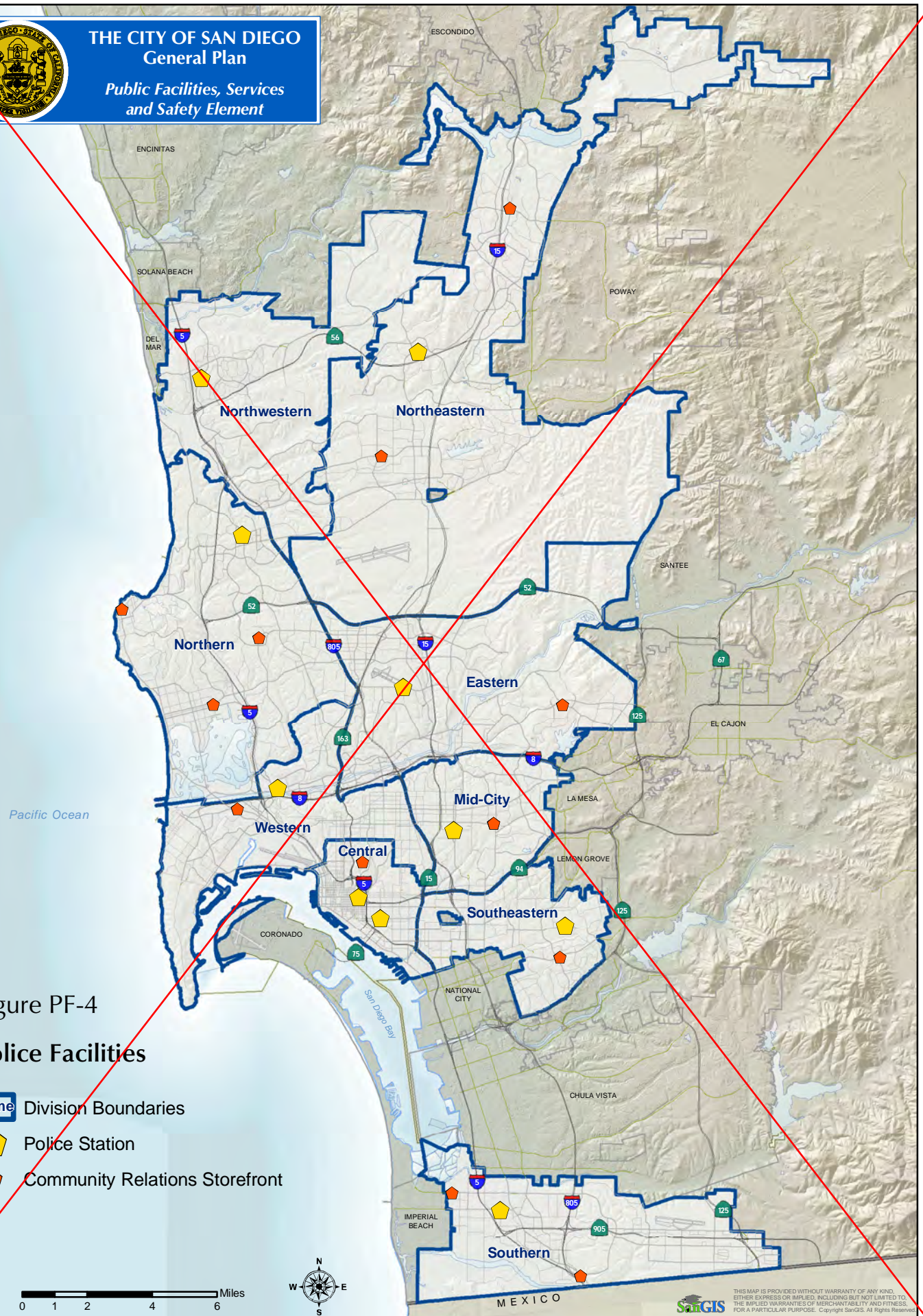
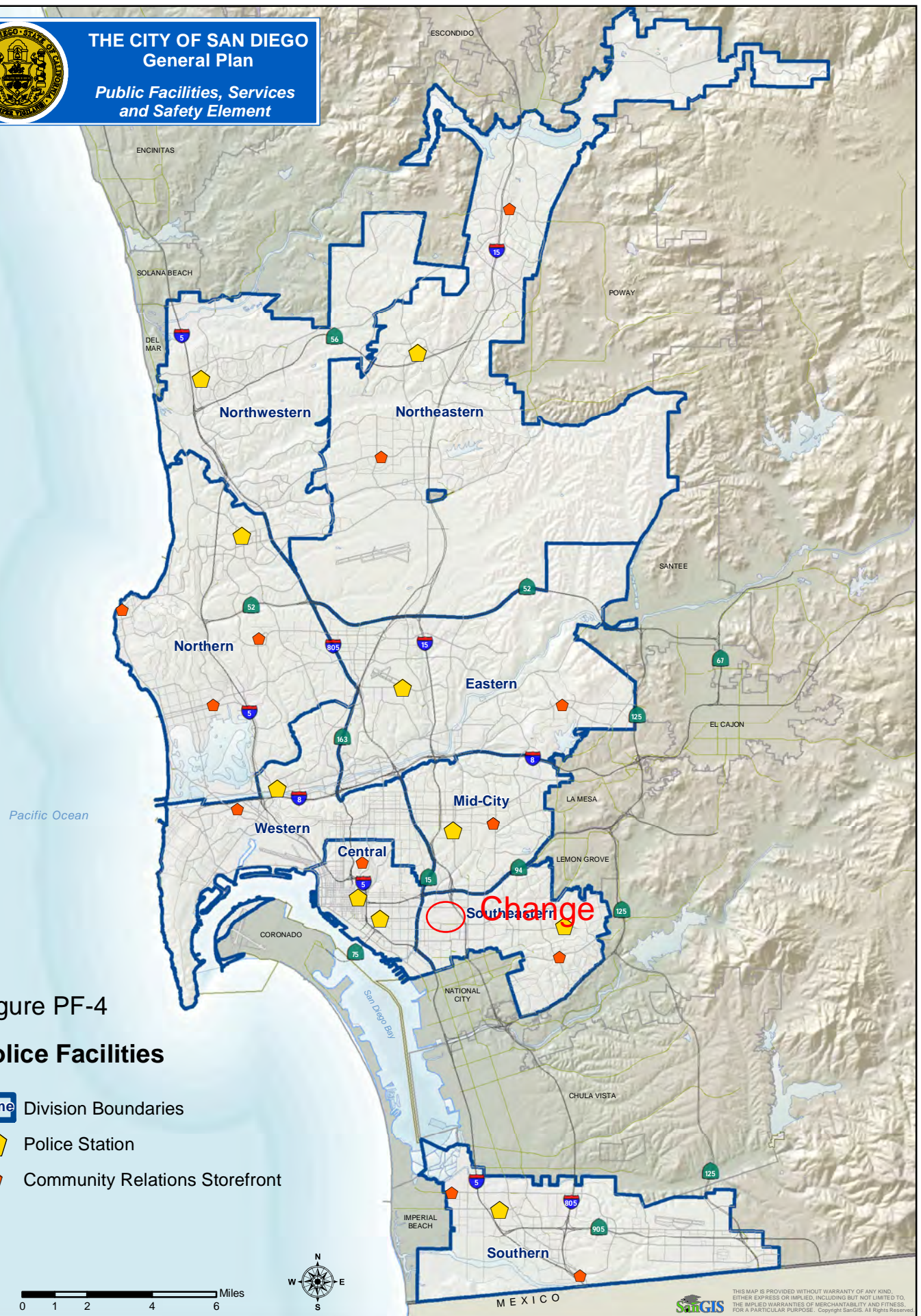
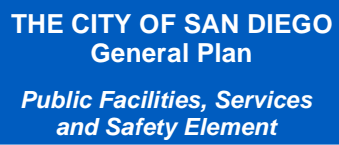


Figure PF-4
Police Facilities

- Name** Division Boundaries
- Police Station
- Community Relations Storefront

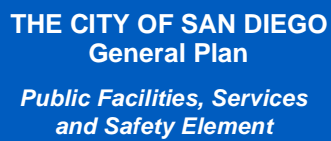




THE CITY OF SAN DIEGO General Plan

Public Facilities, Services and Safety Element










THE CITY OF SAN DIEGO General Plan

Public Facilities, Services and Safety Element

Figure PF-6

Library Facilities

-  City of San Diego Central Library
-  City of San Diego Branches
-  County of San Diego Branches

0 1 2 4 6 Miles



THIS MAP IS PROVIDED WITHOUT WARRANTY OF ANY KIND, EITHER EXPRESS OR IMPLIED, INCLUDING BUT NOT LIMITED TO, THE IMPLIED WARRANTIES OF MERCHANTABILITY AND FITNESS, FOR A PARTICULAR PURPOSE. Copyright SARGIS. All Rights Reserved.



THE CITY OF SAN DIEGO General Plan

Public Facilities, Services and Safety Element

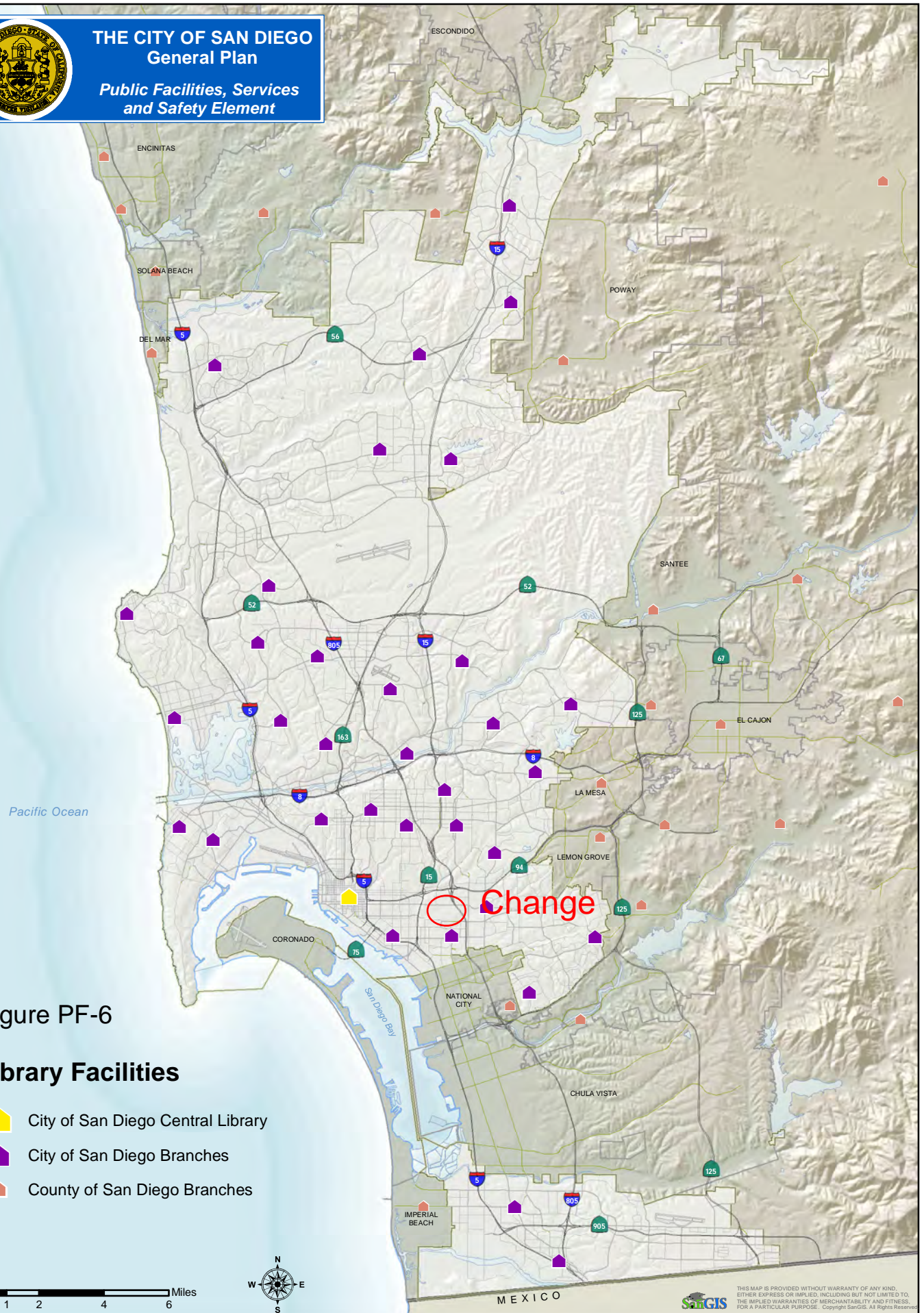



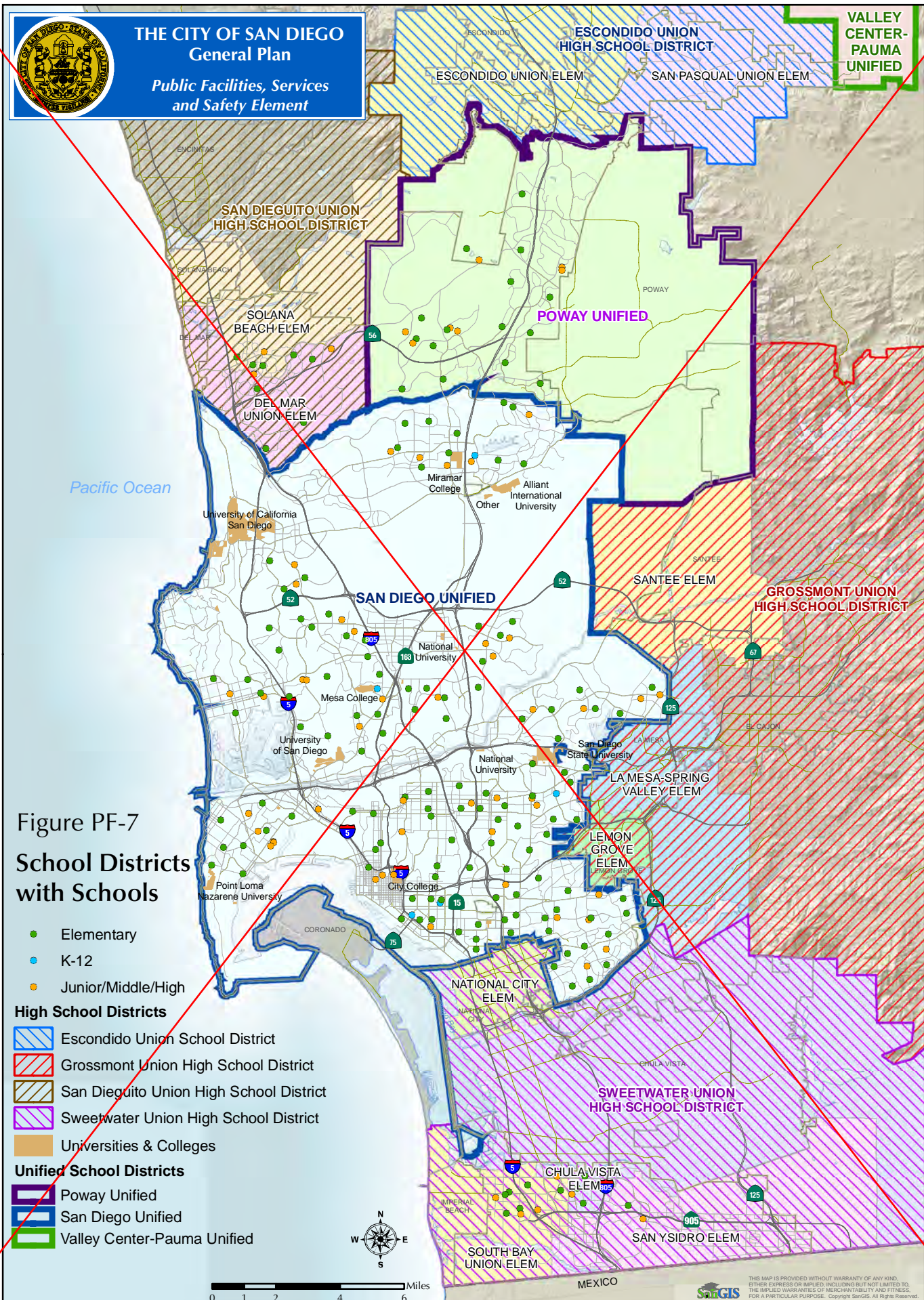


Figure PF-6

Library Facilities

-  City of San Diego Central Library
-  City of San Diego Branches
-  County of San Diego Branches





THE CITY OF SAN DIEGO General Plan

Public Facilities, Services
and Safety Element

Figure PF-7
School Districts
with Schools

- Elementary
- K-12
- Junior/Middle/High

High School Districts

- Escondido Union School District
- Grossmont Union High School District
- San Dieguito Union High School District
- Sweetwater Union High School District
- Universities & Colleges

Unified School Districts

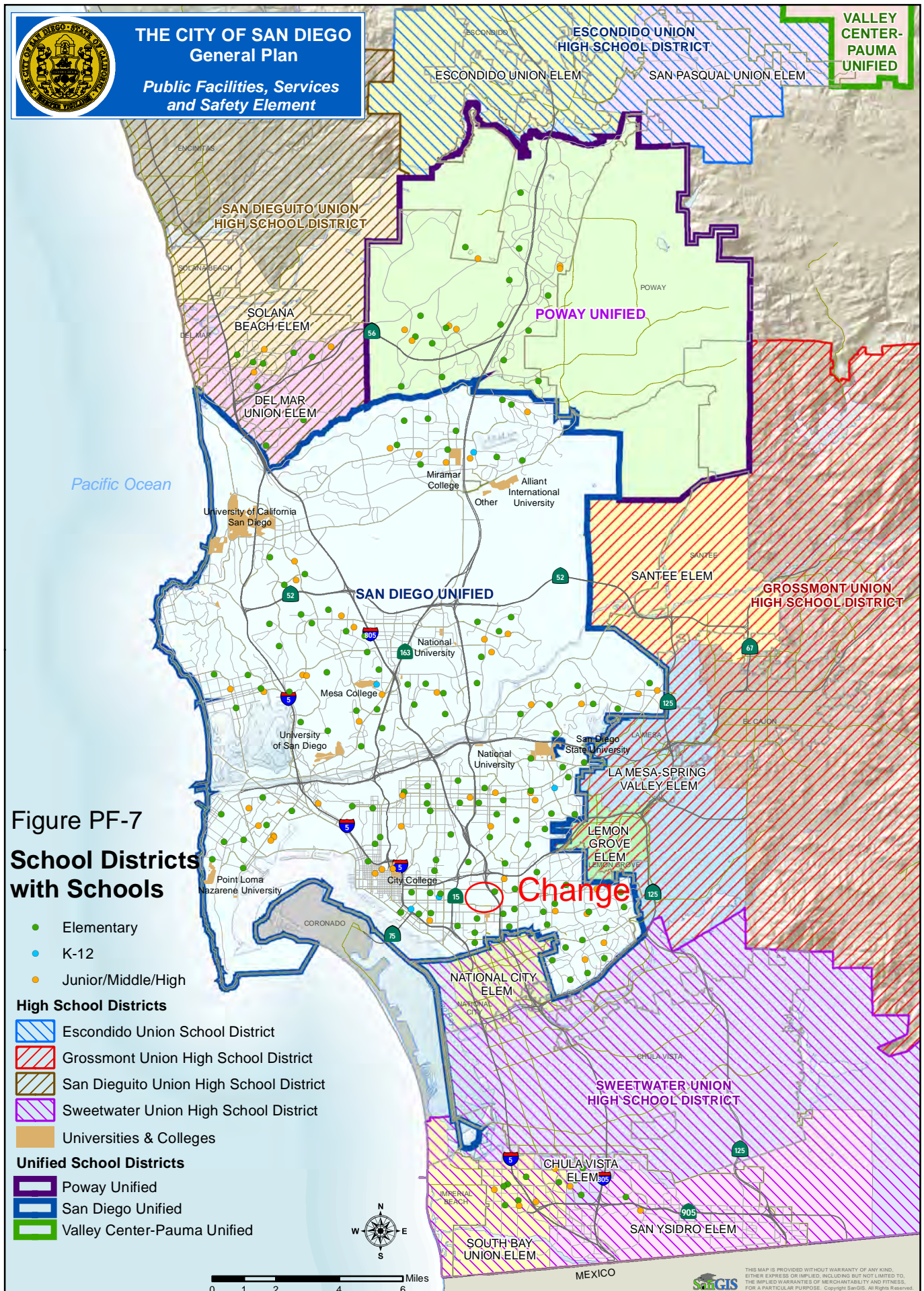
- Poway Unified
- San Diego Unified
- Valley Center-Pauma Unified



0 1 2 4 6 Miles



THIS MAP IS PROVIDED WITHOUT WARRANTY OF ANY KIND,
EITHER EXPRESS OR IMPLIED, INCLUDING BUT NOT LIMITED TO,
THE IMPLIED WARRANTIES OF MERCHANTABILITY AND FITNESS
FOR A PARTICULAR PURPOSE. Copyright SanGIS. All Rights Reserved.





THE CITY OF SAN DIEGO General Plan

Public Facilities, Services and Safety Element

Figure PF-8

Gas and Electric Substations and Transmission Lines

- Substations
- Electric Transmission Tie-line

SDG&E provided this map as a courtesy. SDG&E does not represent that the information contained herein is accurate. SDG&E disclaims all warranties express or implied, including the warranty of fitness for a particular purpose. You are solely responsible for selecting this map to use and you are solely responsible for any consequences resulting from your use.

Map reproduced by the City of San Diego with the permission of SDG&E.

0 1 2 4 6 Miles



MEXICO



THIS MAP IS PROVIDED WITHOUT WARRANTY OF ANY KIND, OTHER EXPRESS OR IMPLIED, INCLUDING BUT NOT LIMITED TO, THE IMPLIED WARRANTIES OF MERCHANTABILITY AND FITNESS, FOR A PARTICULAR PURPOSE. Copyright SDGIS. All Rights Reserved.



THE CITY OF SAN DIEGO General Plan

Public Facilities, Services and Safety Element

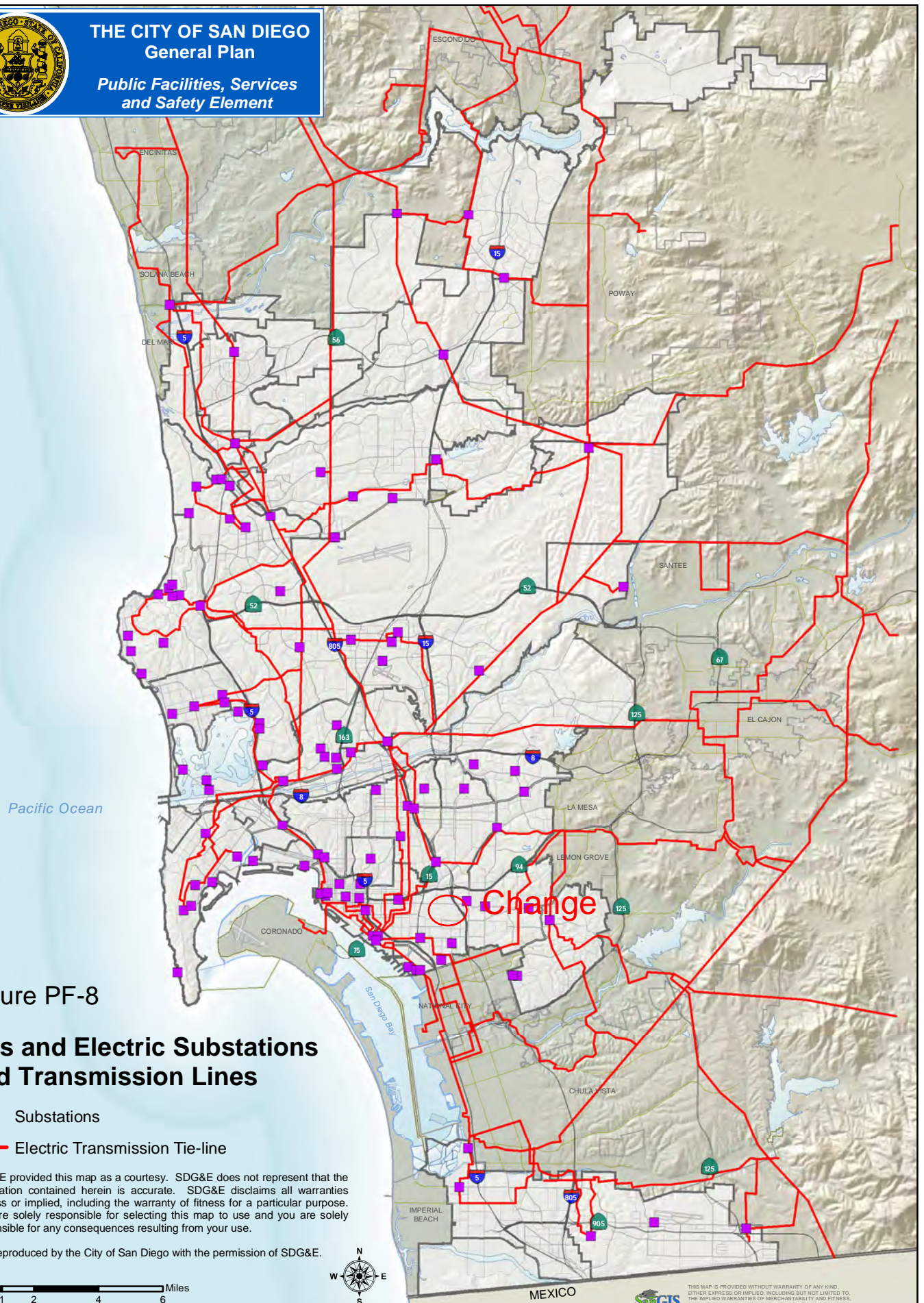


Figure PF-8

Gas and Electric Substations and Transmission Lines

- Substations
- Electric Transmission Tie-line

SDG&E provided this map as a courtesy. SDG&E does not represent that the information contained herein is accurate. SDG&E disclaims all warranties express or implied, including the warranty of fitness for a particular purpose. You are solely responsible for selecting this map to use and you are solely responsible for any consequences resulting from your use.

Map reproduced by the City of San Diego with the permission of SDG&E.



MEXICO

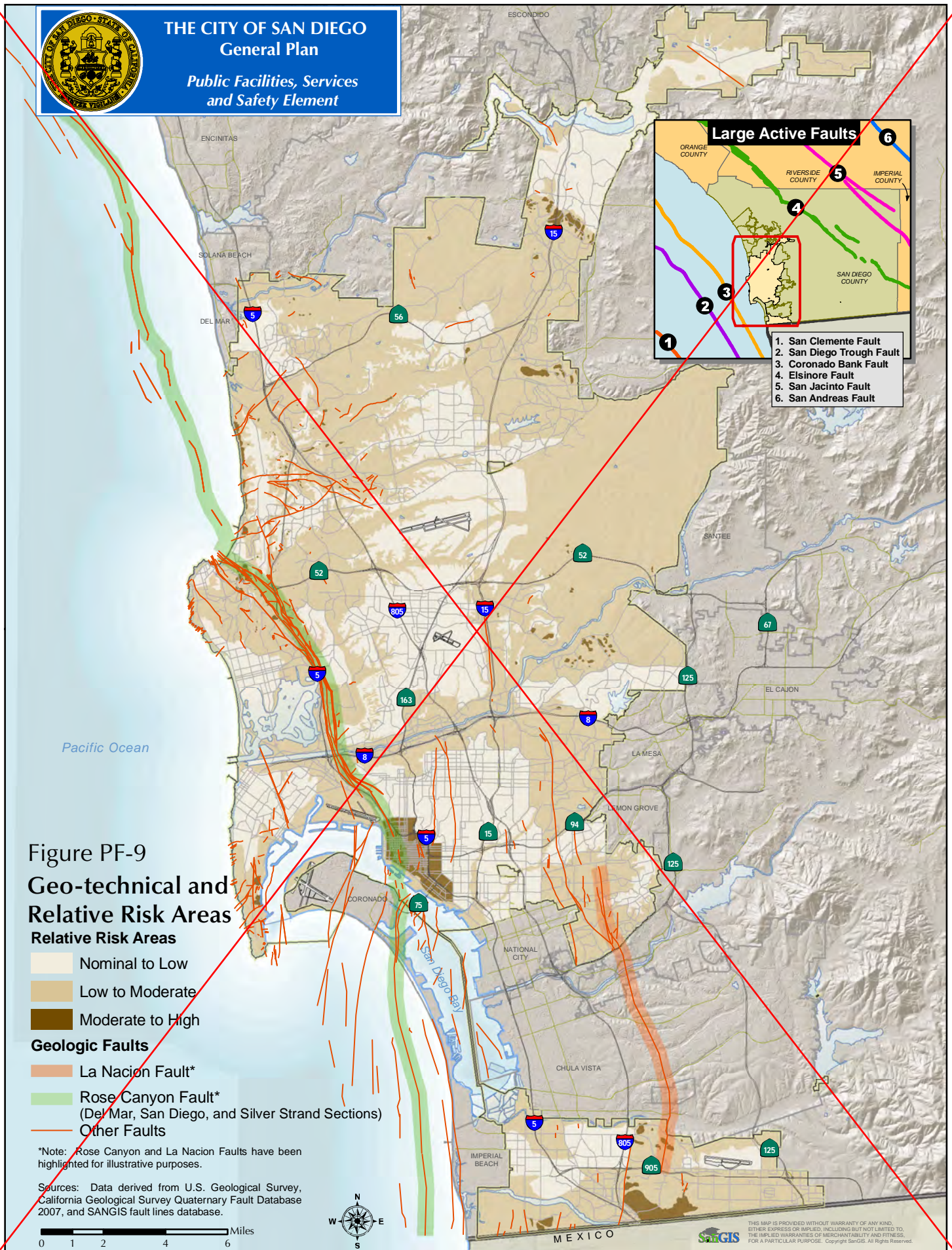


THIS MAP IS PROVIDED WITHOUT WARRANTY OF ANY KIND, OTHER EXPRESS OR IMPLIED, INCLUDING BUT NOT LIMITED TO, THE IMPLIED WARRANTIES OF MERCHANTABILITY AND FITNESS, FOR A PARTICULAR PURPOSE. Copyright SanGIS. All Rights Reserved.



THE CITY OF SAN DIEGO General Plan

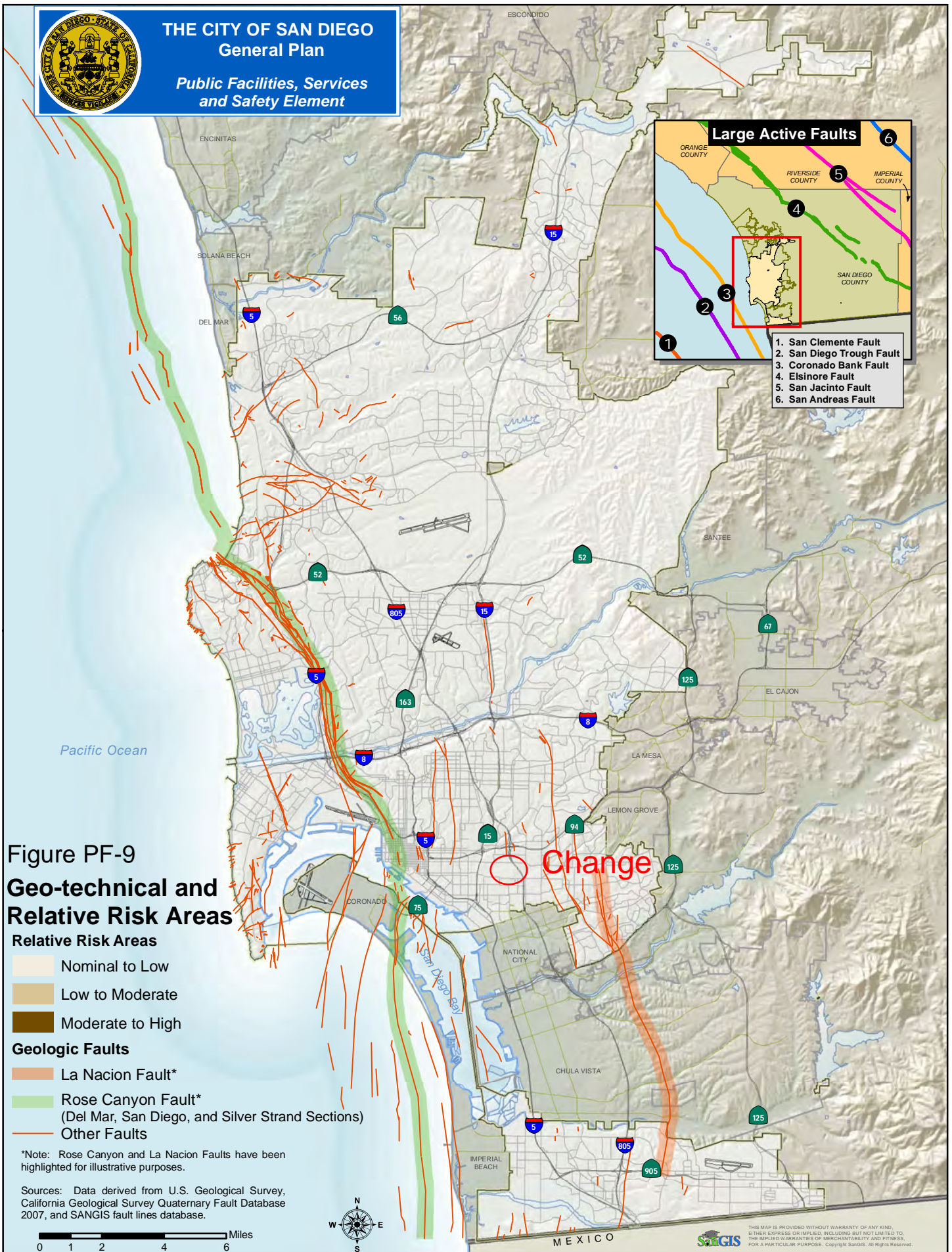
Public Facilities, Services and Safety Element





THE CITY OF SAN DIEGO General Plan

Public Facilities, Services and Safety Element





THE CITY OF SAN DIEGO General Plan

Recreation Element

Figure RE-1

Community Plan Designated Open Space and Parks Map

- Neighborhood Park
- Community Park
- Resource Based Park
- Open Space
- Military Use

0 1 2 4 6 Miles



MEXICO



THIS MAP IS PROVIDED WITHOUT WARRANTY OF ANY KIND, EITHER EXPRESS OR IMPLIED, INCLUDING BUT NOT LIMITED TO, THE IMPLIED WARRANTIES OF MERCHANTABILITY AND FITNESS, FOR A PARTICULAR PURPOSE. Copyright SARGIS. All Rights Reserved.



THE CITY OF SAN DIEGO General Plan

Recreation Element

The General Plan Open Space and Parks Map depicts generalized open space and park land uses in the City of San Diego. The information is a composite of the open space and park uses that are mapped in adopted land use plans. It is intended as a representation of the distribution of open space and park lands throughout the City. It is not a replacement or substitution for community or other adopted land use plans. Please refer to the relevant community or other adopted land use plan documents for more detail regarding open space and park uses.

Revised May 1, 2015

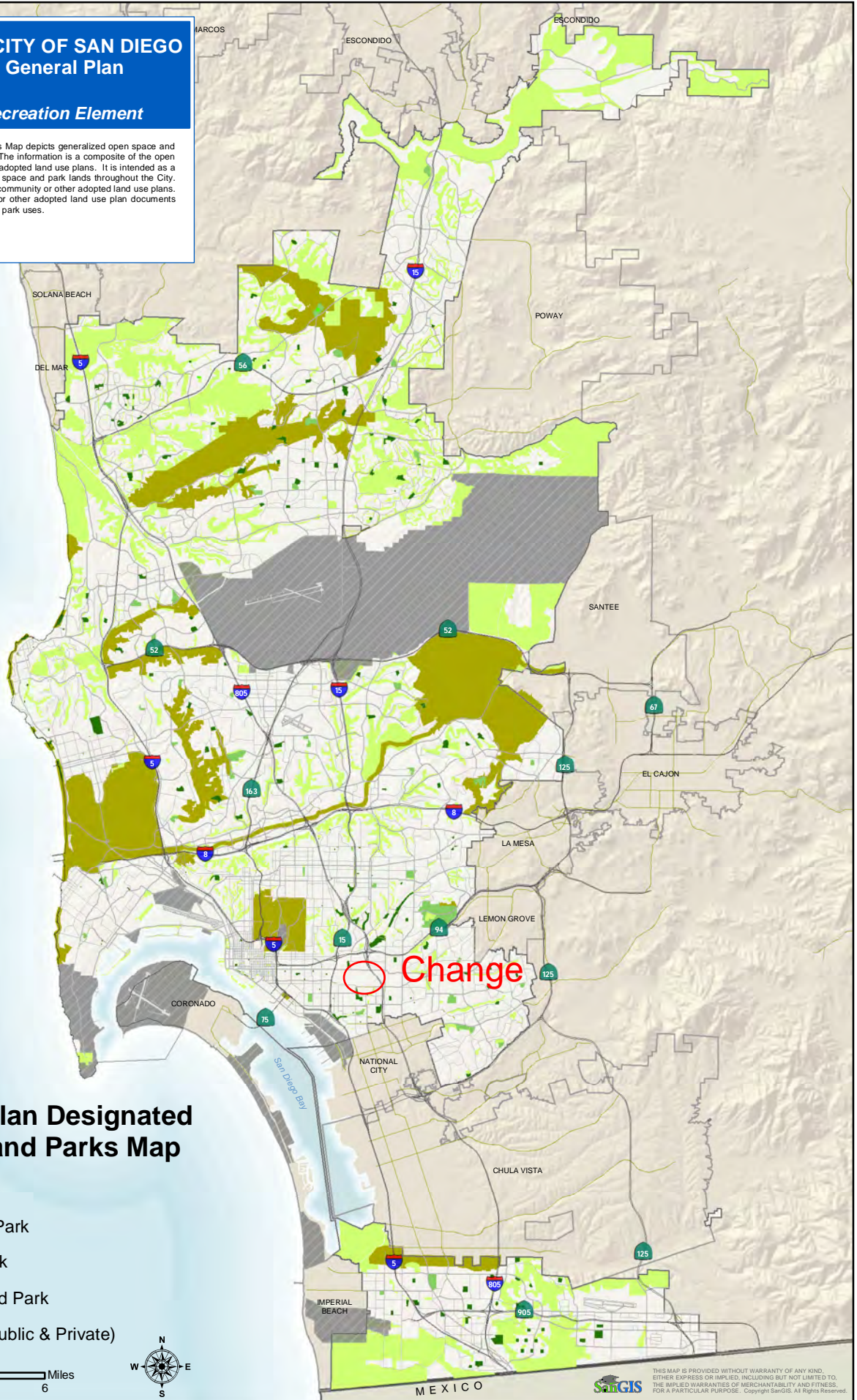


Figure RE-1

Community Plan Designated Open Space and Parks Map

- Military Use
- Neighborhood Park
- Community Park
- Resource Based Park
- Open Space (Public & Private)



THE CITY OF SAN DIEGO General Plan

Recreation Element

Figure RE-2

Planning Areas by Community Park Planning Regions

- Central Region
- Coastal Region
- Eastern Region
- North Central Region
- Northern Region
- Southern Region
- Military Use

0 1 2 4 6 Miles



- Central Region**
 - 1 Balboa Park
 - 2 Barrio Logan
 - 10 Downtown
 - 13 Encanto Neighborhoods**
 - 15 Greater Golden Hill
 - 16 Greater North Park
 - 46 Skyline-Paradise Hills
 - 48 Southeastern San Diego**
 - 54 Uptown
 - Coastal Region**
 - 19 La Jolla
 - 22 Midway-Pacific Highway
 - 25 Mission Bay Park
 - 26 Mission Beach
 - 30 Ocean Beach
 - 32 Old San Diego
 - 35 Pacific Beach
 - 37 Peninsula
 - Eastern Region**
 - 8 College Area
 - 11 East Elliott
 - 6 City Heights*
 - 12 Eastern Area*
 - 18 Kensington-Talmadge*
 - 29 Normal Heights*
 - 28 Navajo
 - 49 Tierrasanta
 - North Central Region**
 - 7 Clairemont Mesa
 - 17 Kearny Mesa
 - 20 Linda Vista
 - 27 Mission Valley
 - 45 Serra Mesa
 - 53 University
 - Northern Region**
 - 3 Black Mountain Ranch
 - 4 Carmel Mountain Ranch
 - 5 Carmel Valley
 - 9 Del Mar Mesa
 - 14 Fairbanks Country Club
 - 30 North City Subarea 2
 - 21 Los Penasquitos Canyon Preserve
 - 23 Mira Mesa
 - 24 Miramar Ranch North
 - 36 Pacific Highlands Ranch
 - 38 Rancho Bernardo
 - 39 Rancho Encantada
 - 40 Rancho Penasquitos
 - 41 Sabre Springs
 - 42 San Pasqual
 - 44 Scripps Miramar Ranch
 - 51 Torrey Highlands
 - 47 Torrey Hills
 - 52 Torrey Pines
 - 55 Via De La Valle
 - Southern Region**
 - 33 Olay Mesa
 - 34 Olay Mesa-Nestor
 - 43 San Ysidro
 - 50 Tijuana River Valley
- * Mid-City Community Plan
** Southeastern San Diego Community Plan



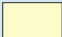






THIS MAP IS PROVIDED WITHOUT WARRANTY OF ANY KIND, EITHER EXPRESS OR IMPLIED, INCLUDING BUT NOT LIMITED TO, THE IMPLIED WARRANTIES OF MERCHANTABILITY AND FITNESS, FOR A PARTICULAR PURPOSE. Copyright SARGIS. All Rights Reserved.



THE CITY OF SAN DIEGO General Plan

Recreation Element

Figure RE-2
**Planning Areas by
Community Park
Planning Regions**

-  Central Region
-  Coastal Region
-  Eastern Region
-  North Central Region
-  Northern Region
-  Southern Region
-  Military Use

0 1 2 4 6 Miles



- Central Region**
 - 1 Balboa Park
 - 2 Barrio Logan
 - 10 Downtown
 - 13 Encanto Neighborhoods**
 - 15 Greater Golden Hill
 - 16 Greater North Park
 - 46 Skyline-Paradise Hills
 - 48 Southeastern San Diego**
 - 54 Uptown
 - Coastal Region**
 - 19 La Jolla
 - 22 Midway-Pacific Highway
 - 25 Mission Bay Park
 - 26 Mission Beach
 - 30 Ocean Beach
 - 32 Old San Diego
 - 35 Pacific Beach
 - 37 Peninsula
 - Eastern Region**
 - 8 College Area
 - 11 East Elliott
 - 6 City Heights*
 - 12 Eastern Area*
 - 18 Kensington-Talmadge*
 - 29 Normal Heights*
 - 28 Navajo
 - 49 Tierrasanta
 - North Central Region**
 - 7 Clairemont Mesa
 - 17 Kearny Mesa
 - 20 Linda Vista
 - 27 Mission Valley
 - 45 Serra Mesa
 - 53 University
 - Northern Region**
 - 3 Black Mountain Ranch
 - 4 Carmel Mountain Ranch
 - 5 Carmel Valley
 - 9 Del Mar Mesa
 - 14 Fairbanks Country Club
 - 30 North City Subarea 2
 - 21 Los Penasquitos Canyon Preserve
 - 23 Mira Mesa
 - 24 Miramar Ranch North
 - 36 Pacific Highlands Ranch
 - 38 Rancho Bernardo
 - 39 Rancho Encantada
 - 40 Rancho Penasquitos
 - 41 Sabre Springs
 - 42 San Pasqual
 - 44 Scripps Miramar Ranch
 - 51 Torrey Highlands
 - 47 Torrey Pines
 - 52 Torrey Pines
 - 55 Via De La Valle
 - Southern Region**
 - 33 Otay Mesa
 - 34 Otay Mesa-Nestor
 - 43 San Ysidro
 - 50 Tijuana River Valley
- * Mid-City Community Plan
** Southeastern San Diego Community Plan



THIS MAP IS PROVIDED WITHOUT WARRANTY OF ANY KIND, EITHER EXPRESS OR IMPLIED, INCLUDING BUT NOT LIMITED TO, THE IMPLIED WARRANTIES OF MERCHANTABILITY AND FITNESS, FOR A PARTICULAR PURPOSE. Copyright SANDIS. All Rights Reserved.