



THE CITY OF SAN DIEGO

MEMORANDUM

DATE: April 12, 2018

TO: Chairman Haase and Members of the Planning Commission

FROM: Cherlyn Cac, Development Project Manager

SUBJECT: Item No. 6 - Mission Center Court Marijuana Outlet (PTS 542366)
Planning Commission Meeting of April 19, 2018

Please find attached "Mission Center Court Marijuana Outlet Obstructed Path of Travel Photo Analysis" to supplement [Report to the Planning Commission No. PC-18-028](#).

Attachments:

1. Mission Center Court Marijuana Outlet Obstructed Path of Travel Photo Analysis

Development Services Department

Mission Center Ct. Marijuana Outlet, Project No. 542366

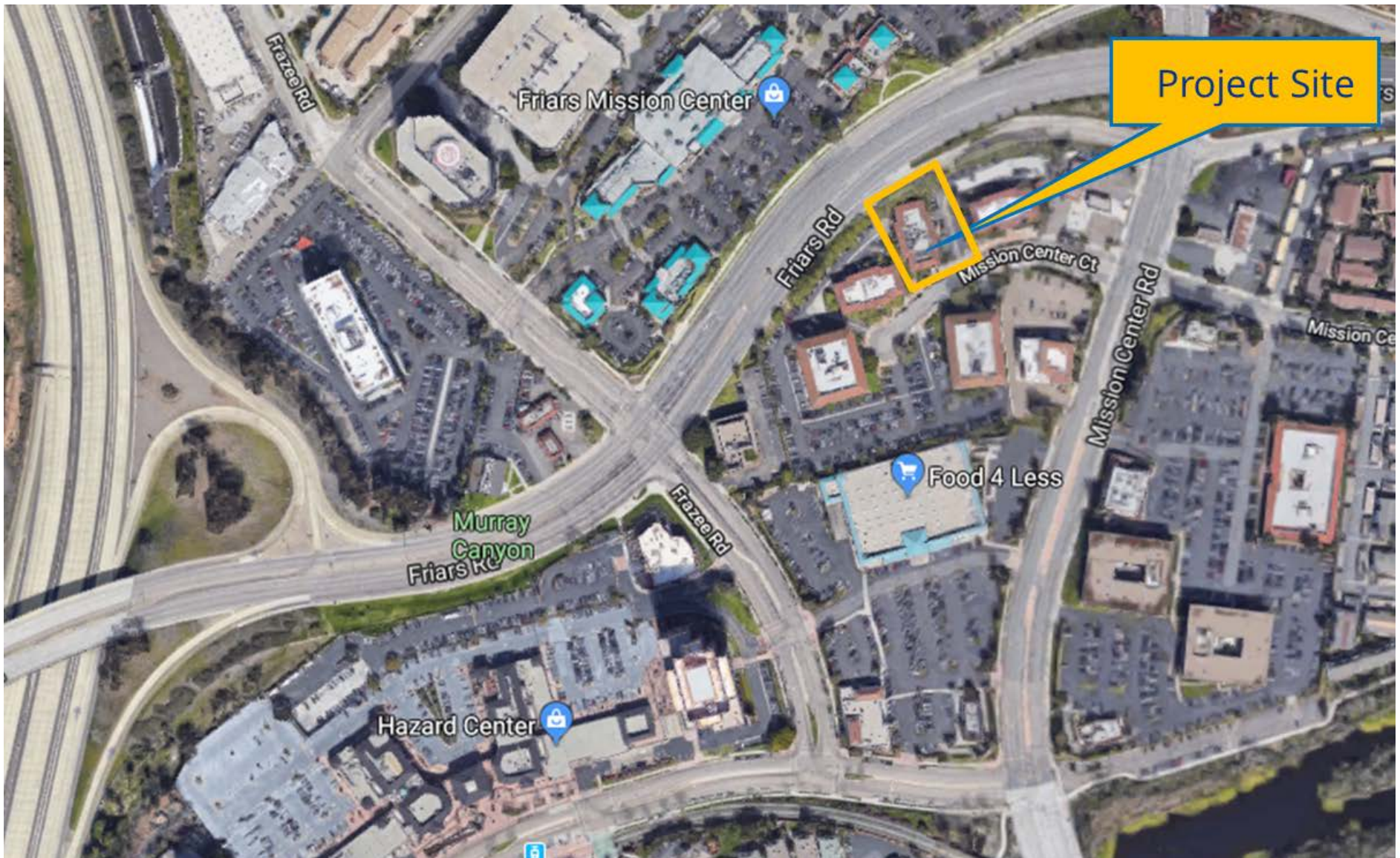
Obstructed Path of Travel

Planning Commission
April 19, 2018

Existing Building – Proposed Marijuana Outlet Site



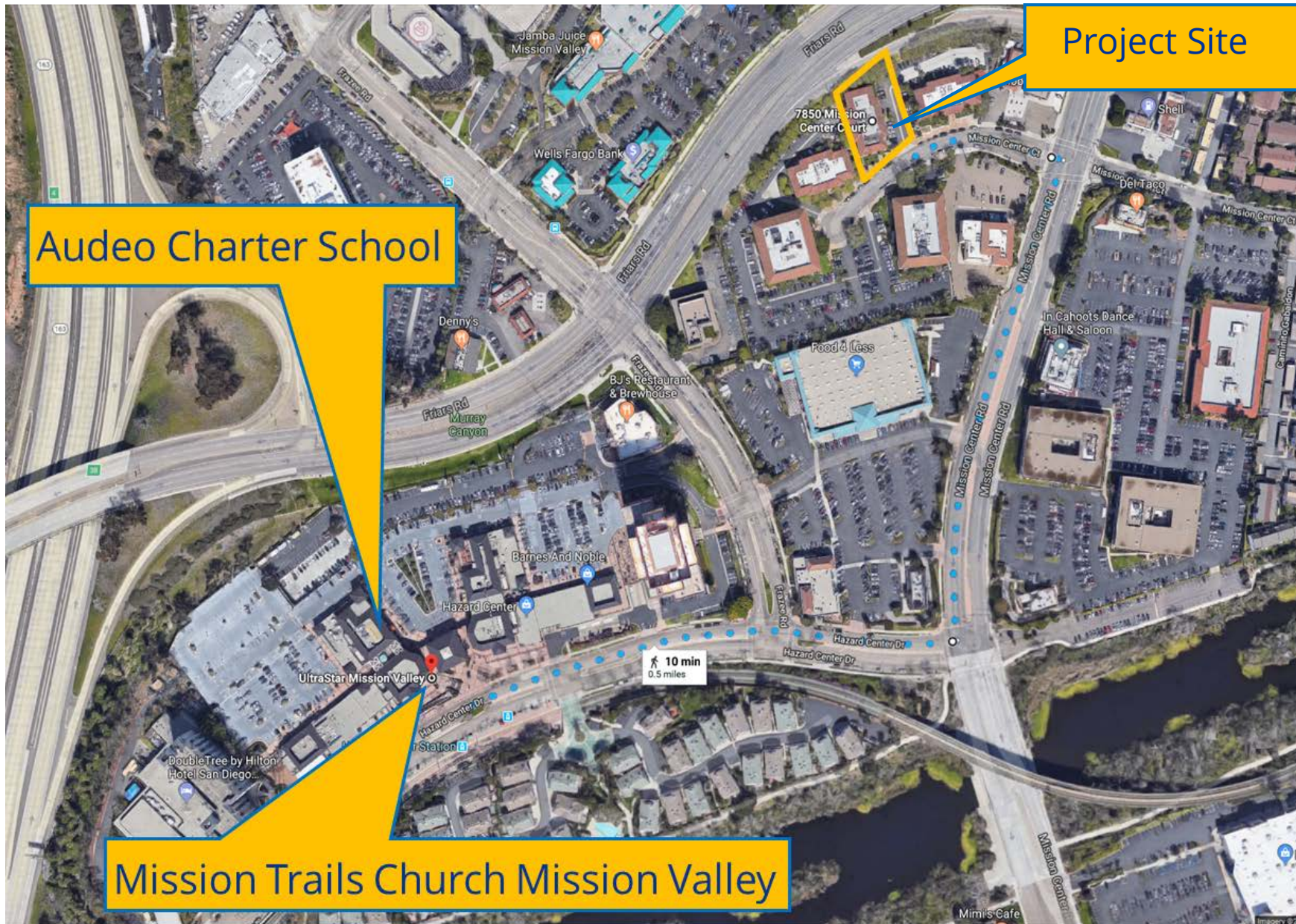
Project Site and Surrounding Development



Rules for Measurement (SDMC 113.0225)

- Distance between property lines in a horizontal straight line.
- Natural topographical barriers & constructed barriers impeding direct access may be considered.
- Distance may be measured as the most direct route around the barrier.

Existing Sensitive Uses



Obstructions to the Path of Travel



Obstructions to the Path of Travel



Obstructions to the Path of Travel



Obstructions to the Path of Travel

