



The "City of Villages" strategy that guides the General Plan, focuses growth in walkable mixed-use activity centers (or "villages") that are connected through regional transit. A village is defined as mixed-use community hubs that include a mix of residential, commercial, employment, and civic spaces. By connecting these villages through regional transportation networks, it reduces car trips, encourages walking, biking, and transit use.

## **Policy Context**

### Community Plans

Due to San Diego's unique size and geography, the city is organized into 49 community planning areas. The General Plan provides the overarching direction to guide new growth aligned with the City of Villages strategy. Community plans refine the General Plan's policies into community-specific policies and recommendations to guide new development over a 20 to 30-year timeframe. Together, the General Plan and community plans identify land uses and public improvements that work toward reducing transportation-related pollution (or greenhouse gas emissions).

### Climate Action Plan

The City Council adopted its first Climate Action Plan in 2015. Most recently in August 2022, the Council adopted an update to the [Climate Action Plan](#) (CAP), which sets a goal to achieve net zero greenhouse gas (GHG) emissions by 2035. To support this goal, the CAP identifies various strategies to reduce GHG emissions. The largest contributing source of GHG emissions is the on-road transportation network – meaning cars traveling in the City. These emissions generate over half (55 percent) of total citywide emissions. The CAP includes various actions to reduce transportation-related emissions, including locating new development in areas near transit, with a focus on providing walking/rolling and biking infrastructure and additional transit investments to serve these areas.

### Regional Transportation Plan

In December 2021, the San Diego Association of Governments (SANDAG) adopted the current [Regional Plan](#). The Regional Plan serves as the Regional Transportation Plan for the San Diego region and includes an updated transportation network. The Regional Transportation Plan is updated every four years. Consistent with the goals of the City's CAP, the Regional Transportation Plan contains policies to improve transit access and options and reduce GHG emissions. The 2021 Regional Plan includes a Sustainable Communities Strategy (SCS) which provides a coordinated transportation and land use planning framework for reducing per capita GHG emissions in the region.

## **DISCUSSION**

### **General Plan Refresh Overview**

#### Why is a General Plan Refresh (Blueprint San Diego) needed?

The General Plan Refresh will provide a framework to grow in a climate-friendly way that addresses the City's current housing, climate, and equity goals. More specifically, the General Plan Refresh will identify a land use strategy and complementary policies to support GHG emissions reductions. It is a focused effort to refresh the citywide land use strategy in the General Plan and to revise and add new policies, discussion, and figures to reflect the 2022 Climate Action Plan and 2021 Regional Transportation Plan.

To achieve greater consistency with the Climate Action Plan, the General Plan Refresh will encourage more homes and jobs in areas that demonstrate the greatest transit competitiveness and improve opportunities to walk/roll, bike, and take transit for daily needs. The General Plan Refresh will identify additional opportunities for homes to be located to help address the city's housing crisis and provide future generations with the continued opportunity to live in San Diego. This General Plan Refresh will guide future community plan updates and other planning efforts to make progress toward the City's housing, climate, and equity goals.

#### How is the General Plan Refresh (Blueprint San Diego) Implementing the City of Villages Strategy?

The General Plan Refresh will update the [Village Propensity Map](#) (Attachment 2), which was last updated in 2008. The map is a part of the Land Use and Community Planning Element of the General Plan and identifies village areas that can support sustainable growth. It guides how community plans are updated, and helps implement the City of Villages strategy.

The revised Village Propensity Map will reflect the 2050 regional transportation network and recent land use patterns. The Village Propensity Map identifies areas with a higher likelihood for walking/rolling, biking, and transit usage compared to driving. Factors considered for determining greatest likelihood for walking/rolling, biking and transit usage include: access to homes, jobs, mixed-use destinations, high-frequency transit services, competitive transit access to job centers, and connections between transit and destinations. This approach identifies areas with the greatest potential for new homes and jobs that align with the City's climate goals and contribute to increasing transit, bicycle, and walk/rolling.

A revised Transit and Land Use Connections Map (Attachment 3) has been included in the General Plan Refresh, which combines the revised Village Propensity Map with existing and planned transit services from the 2050 regional transportation network. It helps show the relationship between land use and transportation, facilitating informed decisions on where new homes and jobs with good transit accessibility should occur.

The Village Propensity Map does not mandate specific land use decisions across the City. Instead, it serves as a guide for land use decisions during community plan updates. Future public input will continue to be sought as part of the community plan update process.

#### What policy concepts are introduced in the General Plan Refresh?

Four key concepts called Sustainable Steps Forward have been developed to foster the development of village areas in a way that aligns with the City's climate, housing, and equity goals. These steps outline potential actions aimed at enhancing transit efficiency, expanding housing and mobility choices, and advancing climate goals.

The Sustainable Steps Forward are as follows:

1. *Provide convenient and affordable transportation options.* Increase the affordability and convenience of climate-friendly transportation options, such as walking/rolling, biking, and public transit.
2. *Get to and from work in a climate-friendly way.* Provide more options to get to work and reduce the need for additional car travel.
3. *Plan for more homes and jobs near transit.* Plan for more homes and jobs near transit to lower emissions.

4. *Create complete neighborhoods.* Provide options for services and amenities, such as shopping and grocery stores, closer to homes so that most daily needs can be met through a short walk, bike, or transit ride.

The General Plan Refresh uses these concepts to guide and inform new and revised policies.

#### What policy changes are proposed to the General Plan Refresh?

In addition to incorporating the revised draft Village Climate Goal Propensity Map, complementary policies, discussion, and figures are proposed as part of the General Plan Refresh to better align with the City's climate, housing, and equity goals. A summary of proposed changes (Attachment 4) are highlighted below for each chapter (element). This is a first draft that allows for the opportunity for early input and will undergo further revisions based on feedback received.

- Land Use and Community Planning Element:
  - Increased discussion on the City of Villages land use strategy to identify potential infill opportunities to increase new homes near transit and employment areas as part of community plan updates.
  - Revised density ranges and the creation of higher density land uses (going from 73+ to 290+ du/ac).
  - Added exemption for some proposed community plan amendments from initiation if they are deemed by staff to be consistent with the three initiation criteria.
  - Increased discussion of 'Balanced Communities and Equitable Development' to reflect the City's commitment to affirmatively further fair housing and summarize recent initiatives to support balanced and equitable communities.
  - Revised maps to capture any relevant changes and for a consistent graphic style.
  
- Mobility Element:
  - Added discussion on prioritizing the mobility of people and sustainable modes of transportation, as well as the relationship between land use and transportation planning.
  - Added a new section on shared use mobility with discussion on the ability of shared use mobility to decrease miles driven as well as policies that guide shared mobility, including parking zones for shared mobility devices, partnerships to optimize availability in mobility hubs for first / last mile connections and equitable access to shared mobility devices.
  - Revised section on transit to include discussion of regional coordination and the most up-to-date regional strategy, including regional rail, as well as emerging technologies to provide transit-supportive infrastructure and increase transit ridership.
  - Added discussion on transit-supportive land uses and the relationship between mobility infrastructure—including walking/rolling, biking and transit—and more intense land uses that complement a walkable lifestyle to support a 'City of Villages' strategy.
  - Added new section on 'Complete Streets' and policy direction to prioritize mobility of people and sustainable modes.
  - Added new policies on Vision Zero, operational measures, and infrastructure improvements for road safety.



- Added new discussion and policies on curb management.
- Added new section on emerging mobility technologies that will help move people and goods around the city in ways that will help meet CAP goals and reduce vehicular travel.
- Revised maps to capture any relevant changes and for a consistent graphic style.
- [Urban Design Element:](#)
  - New policies to encourage pedestrian-oriented design along transit corridors and in new infill development to help break up ‘superblocks.’
  - New policies to encourage pedestrian-oriented design along transit corridors.
  - New and revised policies that encourage pedestrian-orientation and transitions of scale between higher and lower densities.
  - Revised maps to capture any relevant geospatial changes and for a consistent graphic style.
- [Economic Prosperity Element:](#)
  - Revised to reflect the most recent Regional Transportation Plan, more recent statistics on industrial land, and latest figures for employment growth by industry.
  - Revised maps to capture any relevant changes and for a consistent graphic style.
- [Public Facilities, Services, and Safety Element:](#)
  - Minor text edits to reflect a prioritization of public investment in communities with the greatest need.
  - Revised maps to capture any relevant changes and for a consistent graphic style.
- [Recreation Element:](#)
  - Revised to reflect a focus on addressing historic disinvestment in areas of greatest need.
  - Revised maps to capture any relevant geospatial changes and for a consistent graphic style.
- [Conservation Element:](#)
  - Revised to reflect the latest information from the Intergovernmental Panel on Climate Change (IPCC) and changes in State law.
  - Revised to reflect the 2022 Climate Action Plan and the 2017 Vernal Pool Habitat Conservation Plan.
  - Added discussion on Pure Water San Diego and the threat of sea level rise.
  - Revised maps to capture any relevant geospatial changes and for a consistent graphic style.
- [Noise Element:](#)
  - Minor text edits for clarity.
  - Revised maps to capture any relevant changes and for a consistent graphic style.

- [Glossary:](#)
  - New definitions added: Climate Equity Index; Communities of Concern; Institutional Use; Multiple-Use Commercial Land Use; Multiple-Use Residential Land Use; Non-Residential Land Use; Residential Land Use; Structurally Excluded Community.

#### What is the environmental review process for the General Plan Refresh?

A Citywide Program Environmental Impact Report (PEIR) will be prepared to evaluate the environmental impacts of areas where significant land use changes could be proposed. The analysis will comprehensively identify potential feasible mitigation measures to reduce environmental impacts across the City in a manner that best achieves the City's climate goals outlined in the Climate Action Plan.

Once the PEIR is certified, future community plan updates may tier from the Citywide Blueprint San Diego PEIR to provide a more efficient environmental review process as appropriate. It will incorporate applicable mitigation and address potentially significant impacts to the environment identified through the PEIR public review process.

The California Environmental Quality Act (CEQA) establishes defined periods for public review and comments on environmental documents. Comments received on draft environmental documents often relate to community plans which remain open and available throughout the entire Community Plan Update process. It is therefore highly valuable to have these discussions during the community plan process itself to allow for more meaningful conversations and ensures that feedback is received at the most appropriate stage.

#### **Relationship to Community Plans**

#### How will Blueprint San Diego help make the Community Plan Update process more efficient and transparent?

The General Plan Refresh will introduce a more streamlined and strategic approach to guide future updates of community plans. Community Plan Updates will align with the village propensity map and refine how it is delivered at a community level. The environmental analysis for future Community Plan Updates will tier off the PEIR and address any additional environmental considerations at a community level.

This approach presents an opportunity for the City to conduct additional community plan updates, enabling more focused and refined discussions with community members who may not be able to stay engaged for the long periods of time that plan updates have taken in the past. The City values the important role Community Plans play in addressing the unique needs of each community, shaped by valuable input from locals – and these changes are intended to enhance this input process by ensuring that as many people as possible are able to participate and provide their valuable feedback.

#### What is the relationship to current Community Plan Updates that are in progress?

The community plan updates currently in progress (University, Clairemont, College Area and the Hillcrest Focused Plan Amendment) are anticipated to be consistent with the framework identified in the General Plan Refresh (Blueprint San Diego). The City anticipates that future community plan updates, including ones currently underway, will tier from the PEIR for their environmental analyses.

The environmental document for each Community Plan Update will analyze the proposed plan in more detail and evaluate environmental issues specific to each individual community.

### **Engagement and Next Steps**

#### What engagement has been conducted to inform the General Plan Refresh (Blueprint San Diego)?

The following engagement activities have been conducted so far for the General Plan Refresh:

- Two community forums held in September 2021.
- Focused engagement with SR-15 Transportation, Equity, and Affordable Housing (TEAH) Task Force in June/July 2022.
- Public presentations at the Mountainview/Beckwourth and City Heights/Weingart branch libraries in March 2023.
- Citywide survey between March and May 2023. The survey was voluntary and non-statistically valid. A total of 288 responses were received (Attachment 5).
- Two virtual presentations and question and answer sessions held online on June 15, 2023, and June 21, 2023 to learn more about the General Plan Refresh (Blueprint San Diego) and provide feedback on the first draft.

Public comments on the **first** draft of the General Plan Refresh are accepted via e-mail to [blueprints@sanidiego.gov](mailto:blueprints@sanidiego.gov) until June 30, 2023.

#### What are the next steps for Blueprint San Diego?

Late Spring/Early Summer 2023

- Collect public comments on the first draft of the General Plan Refresh through June 30, 2023

Fall 2023

- Release Revised Draft General Plan Amendment (second draft)
- Release Draft Program Environmental Impact Report (EIR)

Winter 2023

- Public Hearings and Adoption

### **CONCLUSION**

Staff will incorporate input from the Planning Commission workshop to the General Plan Refresh and make refinements to proposed policies. Public input on the first draft of the General Plan Refresh will also be received until June 30, 2023. A second draft of the General Plan Refresh will be released for additional public review in Fall 2023 prior to public hearings and presentation to City Council for adoption in Winter 2023.

Respectfully submitted,

  
Nathen Causman  
Senior Planner  
Planning Department

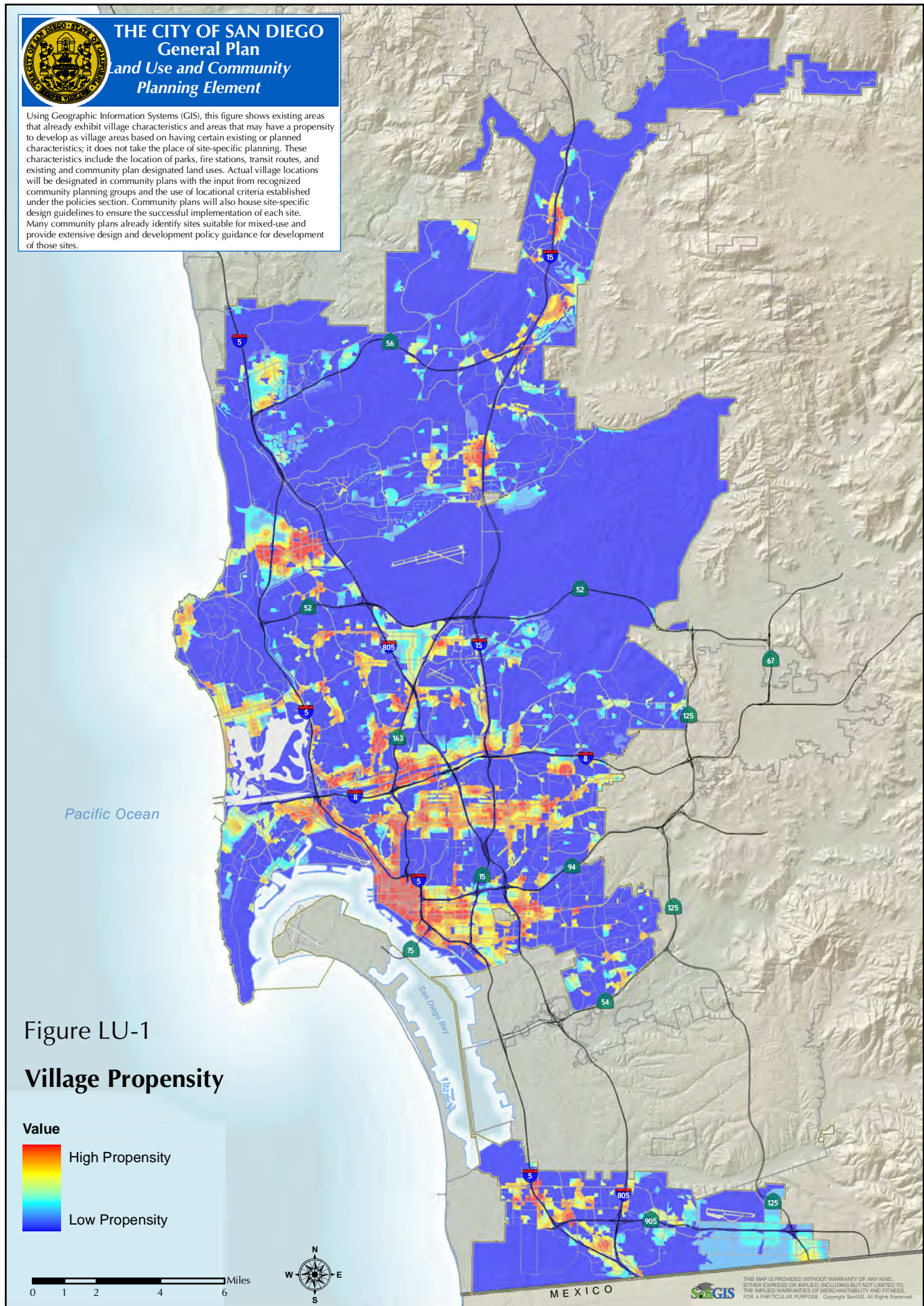
  
Coby Tomlins  
Program Manager  
Planning Department

  
Tait Galloway  
Deputy Director  
Planning Department

Attachments:

1. Adopted Village Propensity Map
2. Draft Village Climate Goal Propensity Map
3. Draft Transit and Village Climate Goal Propensity Map
4. First draft of the General Plan Refresh : Summary of Proposed Changes
5. Blueprint San Diego Citywide Survey Summary

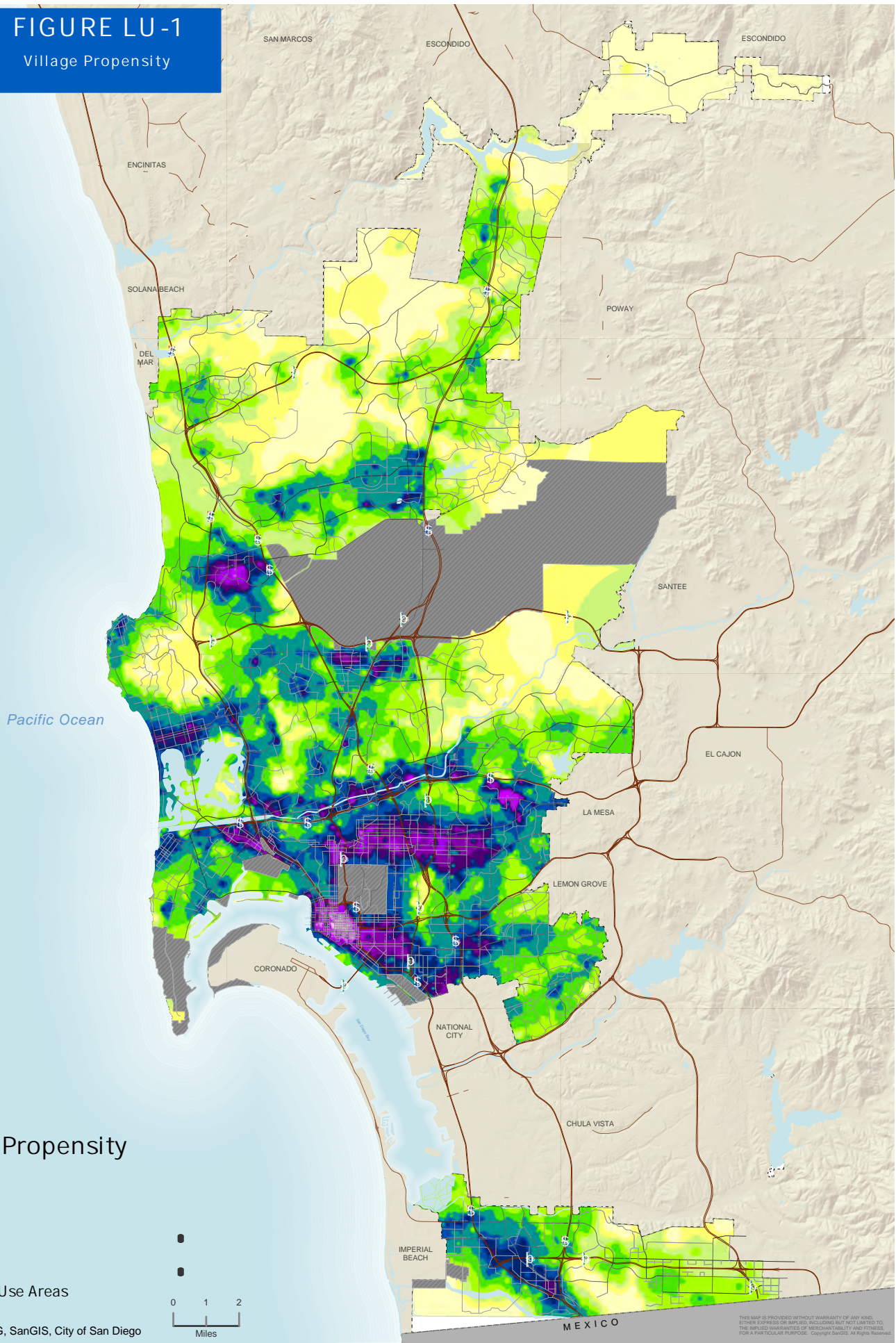








**FIGURE LU-1**  
Village Propensity



**Village Propensity**

Level



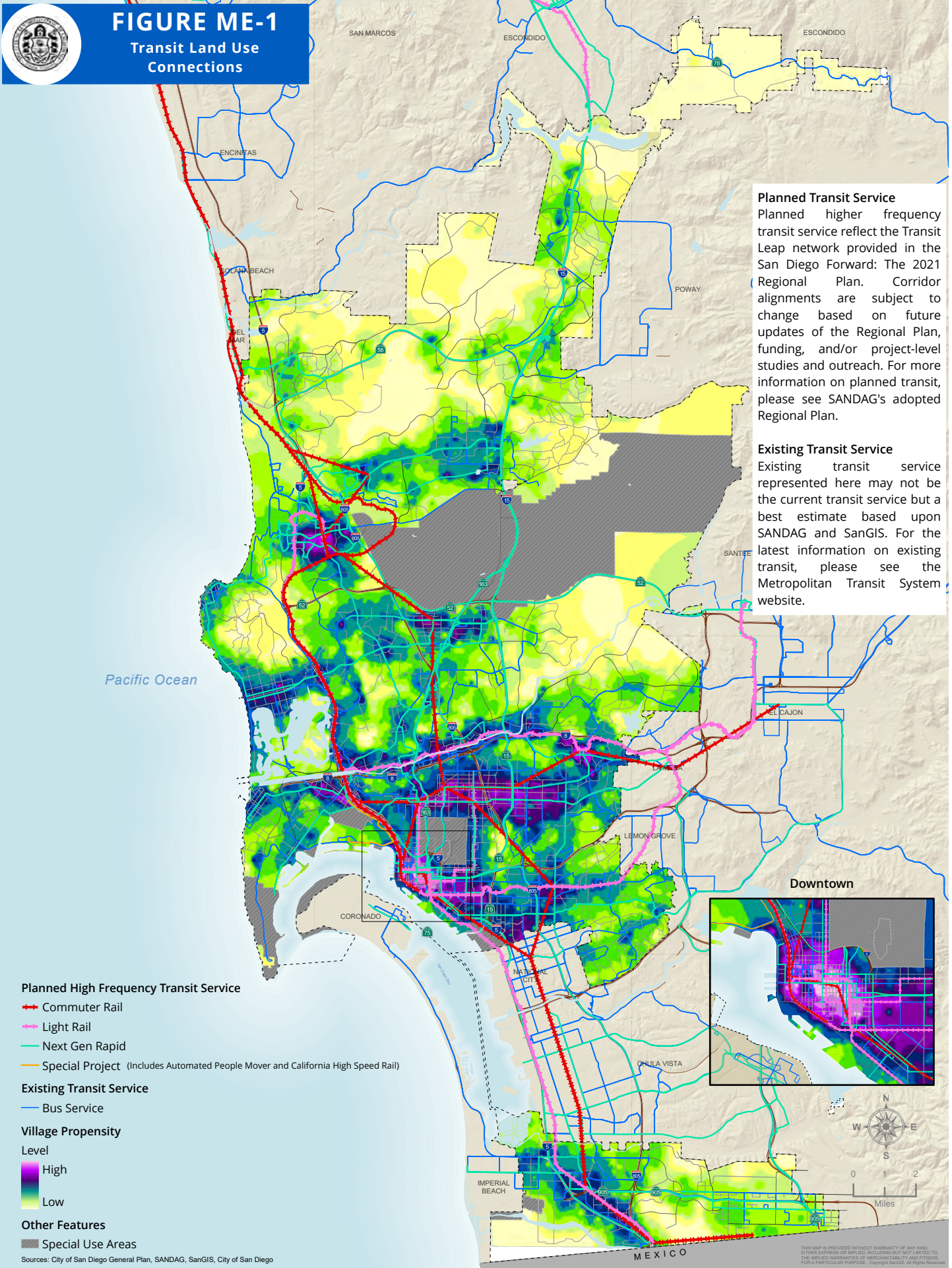
Special Use Areas

Source: SANDAG, SanGIS, City of San Diego



THIS MAP IS PROVIDED WITHOUT WARRANTY OF ANY KIND, EITHER EXPRESS OR IMPLIED, INCLUDING BUT NOT LIMITED TO, THE IMPLIED WARRANTIES OF MERCHANTABILITY AND FITNESS FOR A PARTICULAR PURPOSE. Copyright SanGIS. All Rights Reserved.









## DISCUSSION DRAFT GENERAL PLAN AMENDMENT: SUMMARY OF CHANGES (ALL ELEMENTS)

May 2023

1. LAND USE AND COMMUNITY PLANNING ELEMENT.....	2
2. MOBILITY ELEMENT .....	7
3. URBAN DESIGN .....	17
4. ECONOMIC PROSPERITY ELEMENT.....	20
5. PUBLIC FACILITIES, SERVICES AND SAFETY ELEMENT.....	23
6. RECREATION ELEMENT .....	27
7. CONSERVATION ELEMENT.....	29
8. NOISE ELEMENT .....	34
APPENDICES .....	37
GLOSSARY.....	38

### OTHER GENERAL PLAN AMENDMENTS IN PROGRESS

- The [Environmental Justice Element](#) is in progress and will propose a separate General Plan Amendment.
- The [Historic Preservation Element](#) is being updated as a part of a historic resources planning effort and will propose a separate General Plan Amendment.

1. LAND USE AND COMMUNITY PLANNING ELEMENT

Land Use and Community Planning Element Section	Summary of Changes
Introduction	<ul style="list-style-type: none"> <li>Revised Table LU-1: Existing Land Uses and Table LU-2: Adopted Community Plan Land Uses and discussion</li> <li>Revised Table LU-3: Breakdown of Vacant Developable Land and discussion</li> </ul>
A. City of Villages Strategy	<p><u>Goals:</u></p> <ul style="list-style-type: none"> <li>Updated goals to reflect the latest strategic direction for the City of Villages</li> </ul> <p><u>Discussion:</u></p> <ul style="list-style-type: none"> <li>Updated discussion to emphasize climate goals</li> <li>Updated Village Type descriptions and added example photos</li> <li>Revised Figure LU-1: Village Propensity to reflect Blueprint SD methodology and updated associated Village Locations discussion</li> </ul> <p><u>Policies:</u></p> <ul style="list-style-type: none"> <li>Updated Village Types and Locations policies to emphasize climate goals and the City's commitment to affirmatively further fair housing (LU-A.1., LU-A.2.)</li> <li>Updated to Village Land Use Mix and Design policies to emphasize climate goals (LU-A.6., LU-A.7., LU-A.8.)</li> <li></li> </ul>

Land Use and Community Planning Element Section	Summary of Changes
<p>B. General Plan Land Use Categories</p>	<p><u>Goals:</u></p> <ul style="list-style-type: none"> <li>Updated goals to reflect the latest strategic direction for the City of Villages</li> </ul> <p><u>Discussion:</u></p> <ul style="list-style-type: none"> <li>Replaced Table LU-4: General Plan and Community Plan Land Use Categories with Tables LU-4 through LU-8. Higher density land use categories added and maximum residential density range increased from 73+ dwelling units per acre to 290+ dwelling units per acre.</li> <li>Updated discussion to reflect changes to land use categories</li> <li>Plan designation descriptions moved to Glossary</li> <li>Revised Figure LU-2: General Plan Land Use and Street System Map to reflect latest adopted land uses and street network</li> </ul> <p><u>Policies:</u></p> <ul style="list-style-type: none"> <li>Updated policies to reference revised Tables LU-4 through LU-8 (LU-B.1.)</li> </ul>

Land Use and Community Planning Element Section	Summary of Changes
C. Community Planning	<p><u>Goals:</u></p> <ul style="list-style-type: none"> <li>Updated goals to reflect importance of sustainability and equitable development</li> </ul> <p><u>Discussion:</u></p> <ul style="list-style-type: none"> <li>Updated discussion to reflect importance of climate goals and need for equitable and balanced communities</li> <li>Updated to Public Facilities Financing discussion to reflect changes from the adoption of Build Better SD (2021)</li> <li>Moved Figure LU-3: Planning Areas to this section</li> </ul> <p><u>Policies:</u></p> <ul style="list-style-type: none"> <li>Updated policies to reflect importance of infill, mixed-use and higher density development (LU-C.2.)</li> <li>Updated policies to reflect adoption of Build Better SD (LU-C.2., LU-C.5.)</li> <li>Updated policy to reflect importance of multiple sources of input in community planning process (LU-C.5.)</li> </ul>
D. Plan Amendment Process	<p><u>Goals:</u></p> <ul style="list-style-type: none"> <li>Updated goals to reflect City of Villages strategy</li> </ul> <p><u>Discussion:</u></p> <ul style="list-style-type: none"> <li>Minor text edits for clarity</li> </ul> <p><u>Policies:</u></p> <ul style="list-style-type: none"> <li>Policy on public facilities financing plan removed to reflect the adoption of Build Better SD (2021); subsequent policies renumbered</li> <li>New and amended policies to allow for the possible exemption for residential and mixed-use projects from the initiation requirement for a community plan amendment if certain criteria are met (LU-D.8., LU-D.10.)</li> <li>Text edits for clarity (LU-D.5., LU-D.13.)</li> </ul>



GENERAL PLAN AMENDMENT

Land Use and Community Planning Element Section	Summary of Changes
<p>E. Planning for Coastal Resources</p>	<p><u>Goals:</u></p> <ul style="list-style-type: none"> <li>• No change</li> </ul> <p><u>Discussion:</u></p> <ul style="list-style-type: none"> <li>• Minor text edits for clarity</li> </ul> <p><u>Policies:</u></p> <ul style="list-style-type: none"> <li>• Minor text edits for clarity (LU-E.1.)</li> </ul>
<p>F. Consistency</p>	<p><u>Goals:</u></p> <ul style="list-style-type: none"> <li>• No change</li> </ul> <p><u>Discussion:</u></p> <ul style="list-style-type: none"> <li>• Updates to reflect City of Villages strategy and need for consistency between community land use designations and zoning</li> </ul> <p><u>Polices:</u></p> <ul style="list-style-type: none"> <li>• Minor text edits for clarity (LU-F.1.)</li> <li>• Updated policy to reflect adoption of Build Better SD (LU-F.2.)</li> <li>• Updated policy to reflect City of Villages strategy, the need for housing, and the need for climate action (LU-F.3)</li> </ul>
<p>G. Airport Land Use Compatibility</p>	<p><u>Goals:</u></p> <ul style="list-style-type: none"> <li>• No change</li> </ul> <p><u>Discussion:</u></p> <ul style="list-style-type: none"> <li>• Minor text edits for clarity</li> </ul> <p><u>Policies:</u></p> <ul style="list-style-type: none"> <li>• No change</li> </ul>
<p>H. Balanced Communities and Equitable Development</p>	<p><u>Goals:</u></p> <ul style="list-style-type: none"> <li>• No change</li> </ul> <p><u>Discussion:</u></p> <ul style="list-style-type: none"> <li>• Updated to reflect City's commitment to affirmatively further fair housing and summarize recent initiatives to support balanced and equitable communities</li> </ul> <p><u>Policies:</u></p> <ul style="list-style-type: none"> <li>• Updated policies to affirmatively further fair housing (LU-H.1., LU-H.2.)</li> </ul>

Land Use and Community Planning Element Section	Summary of Changes
I. Environmental Justice	<p><u>Intro box added to note an upcoming General Plan amendment to add an Environmental Justice Element</u></p> <p><u>Goals:</u></p> <ul style="list-style-type: none"> <li>• No change</li> </ul> <p><u>Discussion:</u></p> <ul style="list-style-type: none"> <li>• No change</li> </ul> <p><u>Policies:</u></p> <ul style="list-style-type: none"> <li>• Minor text edits to update cross-references</li> </ul>
J. Proposition A: The Managed Growth Initiative (1985)	<p><u>Goals:</u></p> <ul style="list-style-type: none"> <li>• No change</li> </ul> <p><u>Discussion:</u></p> <ul style="list-style-type: none"> <li>• Minor text edits for clarity</li> <li>• Revised Figure LU-4: Proposition A Lands and updated to show City boundary</li> </ul> <p><u>Policies:</u></p> <ul style="list-style-type: none"> <li>• No change</li> </ul>
K. Annexations and Reorganizations	<p><u>Goals:</u></p> <ul style="list-style-type: none"> <li>• No change</li> </ul> <p><u>Discussion:</u></p> <ul style="list-style-type: none"> <li>• Minor text edits for clarity</li> </ul> <p><u>Policies:</u></p> <ul style="list-style-type: none"> <li>• Revised Figure LU-4 of Proposition A lands to the graphic style of all other figures</li> <li>• Updated policy to reference appropriate zone as a part of LAFCO application (LU-K.2.)</li> <li>• Minor text edits for clarity (LU-K.4.)</li> </ul>

## 2. MOBILITY ELEMENT

Mobility Element Section	Summary of Changes
<p>General Note</p>	<ul style="list-style-type: none"> <li>• Overall Element reorganized to reflect updated prioritization of sustainable modes:               <ul style="list-style-type: none"> <li>○ A. Walkable Communities</li> <li>○ B. Bicycling</li> <li>○ C. Shared Use Mobility</li> <li>○ D. Public Transit</li> <li>○ E. Complete Streets</li> <li>○ F. Intelligent Transportation System</li> <li>○ G. Transportation Demand Management</li> <li>○ H. Parking and Curb Space Management</li> <li>○ I. Airports</li> <li>○ J. Goods Movement/Freight</li> <li>○ K. Regional Coordination and Financing</li> <li>○ L. Emerging Technologies</li> </ul> </li> <li>• Prior organization was:               <ul style="list-style-type: none"> <li>○ A. Walkable Communities</li> <li>○ B. Transit First</li> <li>○ C. Street and Freeway System</li> <li>○ D. Intelligent Transportation System (ITS)</li> <li>○ F. Bicycling</li> <li>○ G. Parking Management</li> <li>○ H. Airports</li> <li>○ I. Passenger Rail</li> <li>○ J. Goods Movement/Freight</li> <li>○ K. Regional Coordination and Financing</li> </ul> </li> </ul>



Mobility Element Section	Summary of Changes
Introduction	<ul style="list-style-type: none"> <li>• Added a statement to reflect the City's commitment to prioritize equitable planning to reduce disparities and historic inequities</li> <li>• Added a section on the mobility element relationship to other plans and programs               <ul style="list-style-type: none"> <li>○ SANDAG Regional Transportation Plan</li> <li>○ Climate Action Plan</li> <li>○ Vision Zero</li> <li>○ Long Range Mobility Master Plan</li> </ul> </li> <li>• Reorganized text into a section on the mobility element relationship to other agencies</li> <li>• Revised Figure ME-1: Transit Land Use Connections into two figures (ME-1A and ME-1B) to reflect updated Village Propensity Map and updated General Plan Land Use Map as well as changes to existing transit service and planned transit service based on SANDAG's 2050 Regional Plan</li> <li>• Updated to reflect latest policy direction to prioritize mobility of people and sustainable modes</li> <li>• Revised discussion on relationship between Land Use and Transportation Planning to reflect City of Villages growth strategy</li> <li>• Updated description of SANDAG's Regional Plan</li> <li>• Added references to the Climate Action Plan, Vision Zero, and equity-related goals</li> <li>• Added reference to the Mobility Master Plan</li> </ul>

Mobility Element Section	Summary of Changes
<p>A. Walkable Communities</p>	<p><u>Goals:</u></p> <ul style="list-style-type: none"> <li>• Minor text edits for clarity</li> </ul> <p><u>Discussion:</u></p> <ul style="list-style-type: none"> <li>• Minor text edits for clarity</li> </ul> <p><u>Policies:</u></p> <ul style="list-style-type: none"> <li>• Amended policies to better reflect ADA-requirements and emphasize universal design (ME-A.2., ME-A.4.)</li> <li>• New policies added to reflect importance of integrating recreation opportunities with mobility infrastructure (ME-A.10., ME-A.11.)</li> <li>• Minor text edits to the Pedestrian Improvement Toolbox for clarity</li> </ul>
<p>B. Bicycling</p>	<p><u>Goals:</u></p> <ul style="list-style-type: none"> <li>• Minor text edits for clarity</li> </ul> <p><u>Discussion:</u></p> <ul style="list-style-type: none"> <li>• Minor text edits for clarity</li> <li>• Revised Figure ME-2: Bikeways to reflect latest existing and proposed bike facilities</li> </ul> <p><u>Policies:</u></p> <ul style="list-style-type: none"> <li>• Amended policy to reflect a Class IV-first approach to bike facilities (ME-B.1.)</li> <li>• Amended policy to reflect importance of reducing bikeway stress to support commuting and access to daily needs (ME-B.2.)</li> <li>• Amended policy to reflect latest treatments and considerations for bicyclist comfort (ME-B.3.)</li> </ul>

Mobility Element Section	Summary of Changes
C. Shared Use Mobility	<p><u>Note:</u></p> <ul style="list-style-type: none"> <li>This is a newly added section</li> </ul> <p><u>Goals:</u></p> <ul style="list-style-type: none"> <li>New goals added to address shared use mobility</li> </ul> <p><u>Discussion:</u></p> <ul style="list-style-type: none"> <li>New discussion added to reflect shared use mobility (bike share, scooter share, neighborhood electric vehicles, etc.) as a transportation option that can replace vehicle trips and make progress towards climate goals</li> </ul> <p><u>Policies:</u></p> <ul style="list-style-type: none"> <li>New policies added to guide shared mobility programs, including shared mobility device parking zones, promoting equitable access to shared mobility programs, and regularly evaluating program effectiveness (ME-C.1., ME-C.2., ME-C.3., ME-C.4., and ME-C.5.)</li> </ul>

DRAFT

<p>D. Public Transit</p>	<p><u>Goals:</u></p> <ul style="list-style-type: none"> <li>• New goal emphasizing transit competitiveness with vehicular travel</li> <li>• Amended goal denote the need for land use to support increased transit ridership</li> <li>• Relocated passenger rail goal to this section</li> </ul> <p><u>Discussion:</u></p> <ul style="list-style-type: none"> <li>• Updated discussion to reflect SANDAG’s Regional Plan and 2050 regional transportation network</li> <li>• Updated discussion on regional collaboration</li> <li>• Updated discussion on transit technologies</li> <li>• Updated discussion on transit-supportive land use planning to support the City of Villages strategy through efforts such as the creation of mobility hubs</li> <li>• Relocated discussion on passenger rail to this section; also updated discussion to reflect California High Speed Rail</li> </ul> <p><u>Policies:</u></p> <ul style="list-style-type: none"> <li>• Amended policy to reflect coordination with transit operators and integration with other modes (ME-D.1.)</li> <li>• Amended policy to incorporate mobility hubs (ME-D.4., ME-D.13.)</li> <li>• Amended policy to include local bus with rail network for an integrated regional transit system (ME-D.5.)</li> <li>• New policy to reflect importance of transit availability and access for underserved and transit-dependent populations (ME-D.7.)</li> <li>• New policies to address a future passenger rail system, including new well-designed multimodal stations in or adjacent to villages (ME-D.10. – ME-D.15.)</li> <li>• Amended policy to reflect quick-build policy and design guidelines (ME-D.16.)</li> </ul>
--------------------------	---

Mobility Element Section	Summary of Changes
	<ul style="list-style-type: none"> <li>• New policy to reflect first-mile/last-mile connections (ME-D.18.)</li> <li>• New policy to develop mobility hubs of different scales and with different amenities</li> </ul>
E. Complete Streets	<p><u>Goals:</u></p> <ul style="list-style-type: none"> <li>• Updated goals to reflect latest complete streets approach and prioritize safe access that feels comfortable for alternative transportation</li> </ul> <p><u>Discussion:</u></p> <ul style="list-style-type: none"> <li>• Updated discussion to reflect latest complete streets vision and planning for a balanced network, including SMART corridors and other improvements</li> <li>• Updated discussion to reflect Vision Zero goal</li> <li>• Text edits to Transportation System Planning section for clarity</li> </ul> <p><u>Policies:</u></p> <ul style="list-style-type: none"> <li>• New policies to reflect latest complete streets approach and support the City of Villages strategy (ME-E.1., ME-E.2., ME-E.3., ME-E.4.)</li> <li>• Amended policy to reflect new technology and improvements such as SMART corridors and flexible lanes (ME-C.1.)</li> <li>• Amended policy to reflect collaboration with Caltrans within proximity of freeway on/off-ramps (ME-C.2.)</li> <li>• New policy to improve geographic distribution of mobility infrastructure (ME-C.2.)</li> <li>• New policies to reflect Vision Zero program (ME-E.8., ME-E.9.)</li> <li>• Amended policies with text edits for clarity (ME-C.1., ME-C.3., ME-C.4., ME-C.5., ME-C.8.)</li> </ul>

Mobility Element Section	Summary of Changes
<p>F. Intelligent Transportation Systems (ITS)</p>	<p><u>Goals:</u></p> <ul style="list-style-type: none"> <li>Updated goal to reflect policy direction from Climate Action Plan to improve flow of traffic</li> </ul> <p><u>Discussion:</u></p> <ul style="list-style-type: none"> <li>Updated discussion on ITS as a long-range strategy to improve street, freeway, and transit operations, and to denote the City's Traffic Signal Communications Master Plan</li> </ul> <p><u>Policies:</u></p> <ul style="list-style-type: none"> <li>Amended policy with text edits for clarity (ME-D.2.)</li> <li>New policy to coordinate with local, regional, and state partners and agencies to manage system performance (ME-D.7.)</li> </ul>
<p>G. Transportation Demand Management</p>	<p><u>Goals:</u></p> <ul style="list-style-type: none"> <li>Clarifying text edits</li> <li>New goal to support pilot Transportation Demand Management (TDM) programs</li> </ul> <p><u>Discussion:</u></p> <ul style="list-style-type: none"> <li>Clarifying text edits</li> </ul> <p><u>Policies:</u></p> <ul style="list-style-type: none"> <li>New policy to support the development of a TDM program for City of San Diego employees (ME-E.9.)</li> <li>New policy to support regional transit pass programs (ME-E.10.)</li> </ul>

Mobility Element Section	Summary of Changes
<p>H. Parking and Curb Space Management</p>	<p><u>Goals:</u></p> <ul style="list-style-type: none"> <li>Updated goals to reflect integration of curb space management with parking management and land uses that support active mobility to reduce parking needs and VMT</li> </ul> <p><u>Discussion:</u></p> <ul style="list-style-type: none"> <li>Updated discussion to reflect curb space activity and parking for non-vehicular uses such as micro-mobility and bikes</li> <li>Updated Table ME-3: Parking Strategies Toolbox to include shared mobility and goods movement</li> </ul> <p><u>Policy:</u></p> <ul style="list-style-type: none"> <li>Amended policy to reflect importance of accessible design standards for parking spaces within public right-of-way (ME-G.1.)</li> <li>Amended policy to reflect the importance of balancing parking with other community goals (ME-G.3.)</li> <li>Amended policy with text edits for clarity (ME-G.4.)</li> <li>New policies to address curb space activity and management (ME-G.6. - ME-G.8.)</li> </ul>
<p>I. Airports</p>	<p><u>Goals:</u></p> <ul style="list-style-type: none"> <li>No change</li> </ul> <p><u>Discussion:</u></p> <ul style="list-style-type: none"> <li>Updated references to Montgomery-Gibbs Executive Airport in table ME-4 and in Municipal Airports section</li> <li>Updated section San Diego International Airport</li> <li>Added description for Cross-Border Xpress (CBX)</li> </ul> <p>Revised Figure ME-3: Airport Locations to show revised label for Montgomery-Gibbs Executive Airport. <u>Policies:</u></p> <ul style="list-style-type: none"> <li>No change</li> <li>Revised Figure ME-3 'Airport Locations' to the graphic style of all other figures</li> </ul>



Mobility Element Section	Summary of Changes
<p>J. Goods Movement/Freight</p>	<p><u>Goals:</u></p> <ul style="list-style-type: none"> <li>• No change</li> </ul> <p><u>Discussion:</u></p> <ul style="list-style-type: none"> <li>• Text edits to intermodal freight system and infrastructure and corresponding bullets for clarity</li> <li>• Updated discussion on last-mile delivery options and digital infrastructure</li> <li>• Revised Figure ME-4: Intermodal Freight Facilities to add Cross-Border Xpress (CBX) and show East Otay Mesa as a future Port of Entry</li> </ul> <p><u>Policies:</u></p> <ul style="list-style-type: none"> <li>• Text edits to policy for clarity (ME-J.8.)</li> <li>• New policy to support the transition of commercial vehicle fleets and medium / heavy duty vehicles for maritime operations to near-zero/zero emission vehicles (ME-J.10 and ME-J.11.)</li> <li>• Revised Figure ME-4 'Intermodal Freight Facilities' to the graphic style of all other figures</li> </ul>
<p>K. Regional Coordination and Financing</p>	<p><u>Goals:</u></p> <ul style="list-style-type: none"> <li>• Minor text edit for clarity</li> </ul> <p><u>Discussion:</u></p> <ul style="list-style-type: none"> <li>• Updated discussion regarding the Regional Transportation Improvement Program (RTIP) and available grant programs</li> </ul> <p><u>Policies:</u></p> <ul style="list-style-type: none"> <li>• Amended policies with text edits for clarity (ME-K.1., ME-K.3., ME-K.5., ME-K.6.)</li> </ul>

Mobility Element Section	Summary of Changes
L. Emerging Technologies	<p><u>Note:</u></p> <ul style="list-style-type: none"> <li>This is a newly added section</li> </ul> <p><u>Goals:</u></p> <ul style="list-style-type: none"> <li>New goals added to reflect emerging technologies and their potential to improve mobility options</li> </ul> <p><u>Discussion:</u></p> <ul style="list-style-type: none"> <li>New discussion added to address Electric Vehicle Infrastructure, Active Transportation and Demand Management, Mobility as a Service (MaaS), and Autonomous Vehicles</li> </ul> <p><u>Policies:</u></p> <ul style="list-style-type: none"> <li>New policies added to develop a citywide electric vehicle strategy and opportunities for charging sites on surplus land that cannot be used for housing (ME-L.1., ME-L.4.)</li> <li>New policies added to support pilot program efforts for emerging technologies (ME-L.2., ME-L.8.)</li> <li>New policy added to develop zero emission infrastructure (ME-L.3.)</li> <li>New policy added to maximize efficiency of services (ME-L.5.)</li> <li>New policy to support emerging technologies improve movement, enhance safety, and support fleet and private vehicle electrification (ME-L.6.)</li> <li>New policy to address effects of autonomous vehicles (ME-L.7.)</li> </ul>

### 3. URBAN DESIGN

Urban Design Element Section	Summary of Changes
Introduction	<ul style="list-style-type: none"> <li>Updated introductory text to reflect that the City's Urban Design Strategy and supporting policies are intended to be implemented through objective design criteria integrated into community plans, zoning regulations, and other efforts</li> <li>Updated Urban Design Strategy to direct growth into transit-oriented mixed use and commercial areas where a high level of activity exists or can potentially be realized</li> </ul>
A. General Urban Design	<p><u>Goals:</u></p> <ul style="list-style-type: none"> <li>Minor text edits for clarity</li> </ul> <p><u>Discussion:</u></p> <ul style="list-style-type: none"> <li>Minor text edits for clarity</li> </ul> <p><u>Policies:</u></p> <ul style="list-style-type: none"> <li>Amended policy to emphasize need for building design to positively contribute to San Diego's need for homes, jobs, services, and amenities (UD-A.5.)</li> <li>Amended cross-references to other policies in the Land Use Element and Mobility Element (UD-A.9., UD-A.10., UD-A.11., UD-A.12.)</li> </ul>
B. Mixed Use Villages and Commercial Areas	<p><u>Note:</u></p> <ul style="list-style-type: none"> <li>This section was reorganized to come before Distinctive Neighborhoods and Residential Design</li> </ul> <p><u>Goals:</u></p> <ul style="list-style-type: none"> <li>Updated goal for neighborhood centers that provide a mix of homes, jobs, services, and amenities</li> <li>Updated goal for corridors that link communities to transit and walking/biking infrastructure and provide access to goods and services</li> </ul> <p><u>Discussion:</u></p> <ul style="list-style-type: none"> <li>Updated cross-reference to the Land Use Element</li> </ul> <p><u>Policies:</u></p> <ul style="list-style-type: none"> <li>Renumbered all policies to reflect reorganization of Element</li> </ul>

Urban Design Element Section	Summary of Changes
	<ul style="list-style-type: none"> <li>Amended policy to guide the development of mixed-use villages by: encouraging the provision of a portion of a project’s site as public space; providing objective design standards; integrating existing or planned transit into design; and incorporating shared mobility services/mobility hubs (UD-B.1.)</li> <li>Amended policy to guide the development of superblocks by: implementing paseos and internal streets to promote walkable blocks; recognizing the importance of exterior improvements along the first two stories of a building to shaping the pedestrian experience; provide active ground floor uses; provide tower controls; and encourage more efficient structured parking (U.D.-B.4.)</li> <li>New policy to guide design along transit corridors by: orienting buildings to the corridor; considering building placement along the street edge; prioritizing the placement of primary building frontages and operable entrances facing the corridor; recognizing the importance of exterior improvements along the first two stories of a building to shaping the pedestrian experience; and limiting the amount of parking from the main corridor (U.D.-B.5.)</li> </ul>
<p>C. Distinctive Neighborhoods and Residential Design</p>	<p><u>Goals:</u></p> <ul style="list-style-type: none"> <li>Updated goals to reflect the need for village centers that provide homes, jobs, services, and amenities throughout the City by providing infill housing, roadways, and supporting infrastructure</li> </ul> <p><u>Discussion:</u></p> <ul style="list-style-type: none"> <li>Updated discussion to reflect the importance of objective design criteria to implement the Urban Design Strategy</li> </ul> <p><u>Policies:</u></p> <ul style="list-style-type: none"> <li>Renumbered all policies to reflect reorganization of Element</li> </ul>

Urban Design Element Section	Summary of Changes
	<ul style="list-style-type: none"> <li>Amended policy to reflect importance of pedestrian orientation and innovative designs for a variety of housing types (UD-C.1.)</li> <li>Amended policy to provide transitions of scale between higher-density and lower-density development based on lot size and other site conditions (UD-C.2.)</li> <li>Amended policy to update cross-reference to Mobility Element (UD-C.5.)</li> </ul>
D. Office and Business Park Development	<p><u>Goals:</u></p> <ul style="list-style-type: none"> <li>No change</li> </ul> <p><u>Discussion:</u></p> <ul style="list-style-type: none"> <li>No change</li> </ul> <p><u>Policies:</u></p> <ul style="list-style-type: none"> <li>Minor text edits for clarity (UD-D.2., UD-D.3.)</li> </ul>
E. Public Spaces and Civic Architecture	<p><u>Goals:</u></p> <ul style="list-style-type: none"> <li>No change</li> </ul> <p><u>Discussion:</u></p> <ul style="list-style-type: none"> <li>No change</li> </ul> <p><u>Policies:</u></p> <ul style="list-style-type: none"> <li>No change</li> </ul>
F. Public Art and Cultural Amenities	<p><u>Goals:</u></p> <ul style="list-style-type: none"> <li>No change</li> </ul> <p><u>Discussion:</u></p> <ul style="list-style-type: none"> <li>No change</li> </ul> <p><u>Policies:</u></p> <ul style="list-style-type: none"> <li>No change</li> </ul>

#### 4. ECONOMIC PROSPERITY ELEMENT

Economic Prosperity Element Section	Summary of Changes
Introduction	<ul style="list-style-type: none"> <li>Updated discussion on SANDAG's Regional Plan</li> <li>Minor text edits for clarity</li> </ul>
A. Industrial Use	<p><u>Goals:</u></p> <ul style="list-style-type: none"> <li>No change</li> </ul> <p><u>Discussion:</u></p> <ul style="list-style-type: none"> <li>Updated statistics regarding industrial land</li> <li>Updated information on economic base sector industrial uses</li> <li>Revised Figure EP-1: Industrial and Prime Industrial Land to reflect recent planning efforts such as the adoption of the Mira Mesa Community Plan</li> </ul> <p><u>Policies:</u></p> <ul style="list-style-type: none"> <li>Removal of Public Facilities Financing Plan policy for consistency with the adoption of Build Better SD (2021) (prior EP-A.20. removed)</li> </ul>
B. Commercial Land Use	<p><u>Goals:</u></p> <ul style="list-style-type: none"> <li>Minor text edits for clarity</li> </ul> <p><u>Discussion:</u></p> <ul style="list-style-type: none"> <li>No change</li> </ul> <p><u>Policies:</u></p> <ul style="list-style-type: none"> <li>No change</li> </ul>
C. Regional Center and Subregional Employment Areas	<p><u>Goals:</u></p> <ul style="list-style-type: none"> <li>No change</li> </ul> <p><u>Discussion:</u></p> <ul style="list-style-type: none"> <li>Revised Figure EP-2: Regional Center and Subregional Employment Areas to show latest City boundary</li> </ul> <p><u>Policies:</u></p> <ul style="list-style-type: none"> <li>No change</li> </ul>

Economic Prosperity Element Section	Summary of Changes
D. Education and Workforce Development	<p><u>Goals:</u></p> <ul style="list-style-type: none"> <li>• No change</li> </ul> <p><u>Discussion:</u></p> <ul style="list-style-type: none"> <li>• Minor text edit for clarity</li> </ul> <p><u>Policies:</u></p> <ul style="list-style-type: none"> <li>• No change</li> </ul>
E. Employment Development	<p><u>Goals:</u></p> <ul style="list-style-type: none"> <li>• No change</li> </ul> <p><u>Discussion:</u></p> <ul style="list-style-type: none"> <li>• Revised Figure EP-4: Employment Growth by Industry Sector with more recent data and updated supporting discussion</li> <li>• Revised Figure EP-5: Top 10 Occupations with the Greatest Growth in the San Diego Region 2028 and updated supporting discussion</li> </ul> <p><u>Policies:</u></p> <ul style="list-style-type: none"> <li>• Minor text exits for clarity</li> </ul>
F. Business Development	<p><u>Goals:</u></p> <ul style="list-style-type: none"> <li>• No change</li> </ul> <p><u>Discussion:</u></p> <ul style="list-style-type: none"> <li>• Updated discussion with more recent information on small businesses</li> </ul> <p><u>Policies:</u></p> <ul style="list-style-type: none"> <li>• No change</li> </ul>
G. Community Infrastructure and Investment	<p><u>Goals:</u></p> <ul style="list-style-type: none"> <li>• Minor text edit for clarity</li> </ul> <p><u>Discussion:</u></p> <ul style="list-style-type: none"> <li>• Minor text edit for clarity</li> </ul> <p><u>Policies:</u></p> <ul style="list-style-type: none"> <li>• Amended policy to reflect Promise and Opportunity Zone program (EP-G.2.)</li> <li>• Amended policy to reflect Enhanced Infrastructure Financing Districts and Property and Business Improvement Districts (EP-G.10.)</li> </ul>



Economic Prosperity Element Section	Summary of Changes
H. Military Installations	<u>Goals:</u> <ul style="list-style-type: none"> <li>No change</li> </ul> <u>Discussion:</u> <ul style="list-style-type: none"> <li>No change</li> </ul> <u>Policies:</u> <ul style="list-style-type: none"> <li>No change</li> </ul>
I. Visitor Industries	<u>Goals:</u> <ul style="list-style-type: none"> <li>No change</li> </ul> <u>Discussion:</u> <ul style="list-style-type: none"> <li>Updated discussion with more recent economic data</li> </ul> <u>Policies:</u> <ul style="list-style-type: none"> <li>No change</li> </ul>
J. International Trade, Maritime Trade, and Border Relations	<u>Goals:</u> <ul style="list-style-type: none"> <li>No change</li> </ul> <u>Discussion:</u> <ul style="list-style-type: none"> <li>Updated discussion with more recent economic data</li> <li>Revised Figure EP-6: Value of San Diego Region Exports: 1992 to 2021 and associated discussion</li> </ul> <u>Policies:</u> <ul style="list-style-type: none"> <li>No change</li> </ul>
K. Redevelopment	<u>Goals:</u> <ul style="list-style-type: none"> <li>No change</li> </ul> <u>Discussion:</u> <ul style="list-style-type: none"> <li>No change</li> </ul> <u>Policies:</u> <ul style="list-style-type: none"> <li>Minor amendment to renumber policies starting from EP-K.1. through EP-K.3.</li> </ul>
L. Economic Information, Monitoring, and Strategic Incentives	<u>Goals:</u> <ul style="list-style-type: none"> <li>No change</li> </ul> <u>Discussion:</u> <ul style="list-style-type: none"> <li>No change</li> </ul> <u>Policies:</u> <ul style="list-style-type: none"> <li>Minor text amendment for clarity (EP-L.1.)</li> </ul>

## 5. PUBLIC FACILITIES, SERVICES AND SAFETY ELEMENT

Public Facilities, Services and Safety Element	Summary of Changes
Introduction	<ul style="list-style-type: none"> <li>Minor text edits for clarity</li> </ul>
A. Infrastructure and Public Spaces	<p><u>Goals:</u></p> <ul style="list-style-type: none"> <li>No change</li> </ul> <p><u>Discussion:</u></p> <ul style="list-style-type: none"> <li>Minor text edits for clarity</li> </ul> <p><u>Policies:</u></p> <ul style="list-style-type: none"> <li>No change</li> </ul>
B. Public Facilities Financing and Evaluation of Growth, Facilities and Services	<p><u>Goals:</u></p> <ul style="list-style-type: none"> <li>No change</li> </ul> <p><u>Discussion:</u></p> <ul style="list-style-type: none"> <li>Removed Figure PF-1: City of San Diego Community Planning Areas by Financing Type to reflect adoption of Build Better SD (2021)</li> </ul> <p><u>Policies:</u></p> <ul style="list-style-type: none"> <li>No change</li> </ul>
C. Public Facilities and Services Prioritization	<p><u>Goals:</u></p> <ul style="list-style-type: none"> <li>No change</li> </ul> <p><u>Discussion:</u></p> <ul style="list-style-type: none"> <li>Removed references to Figure PF-2: CIP Prioritization to reflect adoption of Build Better SD</li> </ul> <p><u>Policies:</u></p> <ul style="list-style-type: none"> <li>No change</li> </ul>
D. Fire Rescue	<p><u>Goals:</u></p> <ul style="list-style-type: none"> <li>No change</li> </ul> <p><u>Discussion:</u></p> <ul style="list-style-type: none"> <li>Renumbered and updated Figure PF-1: Fire and Lifeguard Facilities and revised to show latest City boundary</li> </ul> <p><u>Policies:</u></p> <ul style="list-style-type: none"> <li>No change</li> </ul>

Public Facilities, Services and Safety Element	Summary of Changes
E. Police	<p><u>Goals:</u></p> <ul style="list-style-type: none"> <li>• No change</li> </ul> <p><u>Discussion:</u></p> <ul style="list-style-type: none"> <li>• Renumbered and updated Figure PF-2: Police Facilities and to show latest City boundary</li> </ul> <p><u>Policies:</u></p> <ul style="list-style-type: none"> <li>• No change</li> </ul>
F. Wastewater	<p><u>Goals:</u></p> <ul style="list-style-type: none"> <li>• No change</li> </ul> <p><u>Discussion:</u></p> <ul style="list-style-type: none"> <li>• Renumbered and updated Figure PF-3: Wastewater Facilities and revised to show latest City boundary</li> </ul> <p><u>Policies:</u></p> <ul style="list-style-type: none"> <li>• No change</li> </ul>
G. Storm Water Infrastructure	<p><u>Goals:</u></p> <ul style="list-style-type: none"> <li>• No change</li> </ul> <p><u>Discussion:</u></p> <ul style="list-style-type: none"> <li>• No change</li> </ul> <p><u>Policies:</u></p> <ul style="list-style-type: none"> <li>• No change</li> </ul>
H. Water Infrastructure	<p><u>Goals:</u></p> <ul style="list-style-type: none"> <li>• No change</li> </ul> <p><u>Discussion:</u></p> <ul style="list-style-type: none"> <li>• No change</li> </ul> <p><u>Policies:</u></p> <ul style="list-style-type: none"> <li>• No change</li> </ul>
I. Waste Management	<p><u>Goals:</u></p> <ul style="list-style-type: none"> <li>• No change</li> </ul> <p><u>Discussion:</u></p> <ul style="list-style-type: none"> <li>• No change</li> </ul> <p><u>Policies:</u></p> <ul style="list-style-type: none"> <li>• No change</li> </ul>

Public Facilities, Services and Safety Element	Summary of Changes
J. Libraries	<p><u>Goals:</u></p> <ul style="list-style-type: none"> <li>• No change</li> </ul> <p><u>Discussion:</u></p> <ul style="list-style-type: none"> <li>• Renumbered and updated Figure PF-4: Library Facilities and revised to show latest City boundary</li> </ul> <p><u>Policies:</u></p> <ul style="list-style-type: none"> <li>• No change</li> </ul>
K. Schools	<p><u>Goals:</u></p> <ul style="list-style-type: none"> <li>• No change</li> </ul> <p><u>Discussion:</u></p> <ul style="list-style-type: none"> <li>• Renumbered and updated Figure PF-5: School Districts with Schools to show latest City boundary</li> </ul> <p><u>Policies:</u></p> <ul style="list-style-type: none"> <li>• No change</li> </ul>
L. Information Infrastructure	<p><u>Goals:</u></p> <ul style="list-style-type: none"> <li>• No change</li> </ul> <p><u>Discussion:</u></p> <ul style="list-style-type: none"> <li>• No change</li> </ul> <p><u>Policies:</u></p> <ul style="list-style-type: none"> <li>• No change</li> </ul>
M. Public Utilities	<p><u>Goals:</u></p> <ul style="list-style-type: none"> <li>• No change</li> </ul> <p><u>Discussion:</u></p> <ul style="list-style-type: none"> <li>• Removed Figure PF-8: Gas and Electric Substations and Transmission Lines based on Federal Energy Regulatory Commission (FERC) guidance</li> </ul> <p><u>Policies:</u></p> <ul style="list-style-type: none"> <li>• No change</li> </ul>
N. Regional Facilities	<p><u>Goals:</u></p> <ul style="list-style-type: none"> <li>• No change</li> </ul> <p><u>Discussion:</u></p> <ul style="list-style-type: none"> <li>• No change</li> </ul> <p><u>Policies:</u></p> <ul style="list-style-type: none"> <li>• No change</li> </ul>

Public Facilities, Services and Safety Element	Summary of Changes
O. Healthcare Services and Facilities	<p><u>Goals:</u></p> <ul style="list-style-type: none"> <li>• No change</li> </ul> <p><u>Discussion:</u></p> <ul style="list-style-type: none"> <li>• No change</li> </ul> <p><u>Policies:</u></p> <ul style="list-style-type: none"> <li>• No change</li> </ul>
P. Hazard Mitigation & Disaster Preparedness	<p><u>Goals:</u></p> <ul style="list-style-type: none"> <li>• No change</li> </ul> <p><u>Discussion:</u></p> <ul style="list-style-type: none"> <li>• Minor text edits for clarity</li> </ul> <p><u>Policies:</u></p> <ul style="list-style-type: none"> <li>• Minor text edits for clarity</li> </ul>
Q. Seismic Safety	<p><u>Goals:</u></p> <ul style="list-style-type: none"> <li>• No change</li> </ul> <p><u>Discussion:</u></p> <ul style="list-style-type: none"> <li>• Renumbered and updated Figure PF-6: Geo-Technical Relative Risk Areas to show latest City boundary</li> </ul> <p><u>Policies:</u></p> <ul style="list-style-type: none"> <li>• No change</li> </ul>

## 6. RECREATION ELEMENT

Recreation Element Section	Summary of Changes
Introduction	<ul style="list-style-type: none"> <li>Updated to reflect importance of addressing historic disinvestment in structurally excluded communities and Communities of Concern</li> <li>Revised Figure RE-1: Community Plan Designated Open Space with updated open space and parks and to show latest City boundary</li> </ul>
A. Park and Recreation Guidelines	<p><u>Goals:</u></p> <ul style="list-style-type: none"> <li>Updated goal to prioritize communities with the greatest park needs first</li> </ul> <p><u>Discussion:</u></p> <ul style="list-style-type: none"> <li>Updated to include discussion on structurally excluded communities and acknowledge historic exclusionary practices</li> <li>Updated to emphasize importance of public engagement and representation from structurally excluded communities</li> <li>Removed Figure RE-2: Planning Areas by Community Park Planning Regions</li> </ul> <p><u>Policies:</u></p> <ul style="list-style-type: none"> <li>Removed duplicate policy and renumbered accordingly</li> <li>Added references to structurally excluded communities (A.14., A.15., A.16.)</li> <li>Amended policy to engage the Kumeyaay Nation in park planning (A.20.)</li> <li>New policy added to ensure future park and recreation initiatives implement the equity and anti-racism policies in the Parks Master Plan (RE-A.21.)</li> </ul>
B. Recreational Opportunities	<p><u>Goals:</u></p> <ul style="list-style-type: none"> <li>No change</li> </ul> <p><u>Discussion:</u></p> <ul style="list-style-type: none"> <li>Minor text edits for clarity</li> </ul> <p><u>Policies:</u></p> <ul style="list-style-type: none"> <li>No change</li> </ul>

Recreation Element Section	Summary of Changes
C. Preservation	<p><u>Goals:</u></p> <ul style="list-style-type: none"> <li>• No change</li> </ul> <p><u>Discussion:</u></p> <ul style="list-style-type: none"> <li>• Minor edits for clarity</li> </ul> <p><u>Policies:</u></p> <ul style="list-style-type: none"> <li>• No change</li> </ul>
D. Accessibility	<p><u>Goals:</u></p> <ul style="list-style-type: none"> <li>• No change</li> </ul> <p><u>Discussion:</u></p> <ul style="list-style-type: none"> <li>• Updated to acknowledge historic redlining and disinvestment in structurally excluded communities and communities of concern</li> </ul> <p><u>Policies:</u></p> <ul style="list-style-type: none"> <li>• No change</li> </ul>
E. Joint Use and Cooperative Partnerships	<p><u>Goals:</u></p> <ul style="list-style-type: none"> <li>• No change</li> </ul> <p><u>Discussion:</u></p> <ul style="list-style-type: none"> <li>• No change</li> </ul> <p><u>Policies:</u></p> <ul style="list-style-type: none"> <li>• Amended policy to include recreational opportunities at transit centers (RE-E.7.)</li> </ul>
F. Open Space Lands and Resource-Based Parks	<p><u>Goals:</u></p> <ul style="list-style-type: none"> <li>• No change</li> </ul> <p><u>Discussion:</u></p> <ul style="list-style-type: none"> <li>• No change</li> </ul> <p><u>Policies:</u></p> <ul style="list-style-type: none"> <li>• Amended sub-policy to establish new policy regarding Trails Master Plan (RE-F.1., RE-F.7.)</li> </ul>

## 7. CONSERVATION ELEMENT

Conservation Element Section	Summary of Changes
Introduction	<ul style="list-style-type: none"> <li>Updated to reflect the latest information from the Intergovernmental Panel on Climate Change (IPCC), changes in State law, and reference the 2022 Climate Action Plan</li> <li>Table CE-1: Issues Related to Climate Change Addressed in the General Plan updated to cross-reference other sections of the General Plan; cross-references to policies will undergo further update</li> </ul>
A. Climate Change and Sustainable Development	<p><u>Goals:</u></p> <ul style="list-style-type: none"> <li>Minor text edit for clarity</li> </ul> <p><u>Discussion:</u></p> <ul style="list-style-type: none"> <li>Updated to describe ‘clean technologies’</li> <li>Updated to reference Climate Resilient SD</li> </ul> <p><u>Policies:</u></p> <ul style="list-style-type: none"> <li>Amended policy to reference climate adaptation strategies and other text edits for clarity (CE-A.2.)</li> <li>Amended policy to reflect the creation and maintenance of a municipal energy implementation plan and zero carbon emissions buildings and operations policy (CE-A.6.)</li> <li>Amended policy to promote prioritization of sustainable landscape design and maintenance in structurally excluded communities and Communities of Concern, promote new urban green space along freeways and public right-of-way, and develop incentives to maintain and plan trees (CE-A.11.)</li> <li>Amended policy to create a Street Tree Master Plan and incorporate climate change considerations into urban forestry management and planning (CE-A.12.)</li> <li>Amended policy to reference Climate Resilient SD (CE-A.13.)</li> <li>Minor text edit for clarity (CE-A.14.)</li> </ul>



Conservation Element Section	Summary of Changes
<p>B. Open Space and Landform Preservation</p>	<p><u>Goals:</u></p> <ul style="list-style-type: none"> <li>• No change</li> </ul> <p><u>Discussion:</u></p> <ul style="list-style-type: none"> <li>• Updated to include discussion on Vernal Pool Habitat Conservation Program</li> <li>• Revised Figure CE-1: Steep Slopes and 200 Foot Contours to show latest City boundary</li> <li>• Revised Figure CE-2: Multi-Habitat Planning Area</li> </ul> <p><u>Policies:</u></p> <ul style="list-style-type: none"> <li>• Amended policy to reference implementation of the Vernal Pool Habitat Conservation Program, develop area-specific management plans and Natural Resource Management Plans, and minor text edits for clarity (CE-B.1.)</li> </ul>
<p>C. Coastal Resources</p>	<p><u>Goals:</u></p> <ul style="list-style-type: none"> <li>• No change</li> </ul> <p><u>Discussion:</u></p> <ul style="list-style-type: none"> <li>• Added discussion of sea level rise</li> <li>• Revised Figure CE-3: Coastal Zone Boundary to show latest City boundary</li> </ul> <p><u>Policies:</u></p> <ul style="list-style-type: none"> <li>• New policy added to implement nature-based shoreline protection methods for areas subject to coastal flooding (CE-C.14.)</li> <li>• New policy added to support utilization of adaptive pathways for coastline planning (CE-C.15)</li> </ul>
<p>D. Water Resources Management</p>	<p><u>Goals:</u></p> <ul style="list-style-type: none"> <li>• No change</li> </ul> <p><u>Discussion:</u></p> <ul style="list-style-type: none"> <li>• Added discussion of Pure Water San Diego</li> <li>• Revised Figure CE-4: San Diego Watersheds to show latest City boundary</li> </ul> <p><u>Policies:</u></p> <ul style="list-style-type: none"> <li>• Amended policy to reflect Pure Water San Diego (CE-D.1.)</li> </ul>

Conservation Element Section	Summary of Changes
<p>E. Urban Runoff Management</p>	<p><u>Goals:</u></p> <ul style="list-style-type: none"> <li>No change</li> </ul> <p><u>Discussion:</u></p> <ul style="list-style-type: none"> <li>Revised Figure CE-5: Flood Hazard Areas to show latest City boundary</li> </ul> <p><u>Policies:</u></p> <ul style="list-style-type: none"> <li>Amended policy to increase permeable areas for new trees and restore spaces that have been paved focused in structurally excluded communities and Communities of Concern (CE-E.2.)</li> </ul>
<p>F. Air Quality</p>	<p><u>Goals:</u></p> <ul style="list-style-type: none"> <li>No change</li> </ul> <p><u>Discussion:</u></p> <ul style="list-style-type: none"> <li>Added discussion of Climate Action Plan and air quality targets</li> </ul> <p><u>Policies:</u></p> <ul style="list-style-type: none"> <li>Amended policy to reflect the development of a City Fleet Vehicle Replacement and Electrification strategy (CE-F.1.)</li> </ul>
<p>G. Biological Diversity</p>	<p><u>Goals:</u></p> <ul style="list-style-type: none"> <li>No change</li> </ul> <p><u>Discussion:</u></p> <ul style="list-style-type: none"> <li>Updated to reflect Vernal Pool Habitat Conservation Program</li> </ul> <p><u>Policies:</u></p> <ul style="list-style-type: none"> <li>Amended policies to reference the Multi-Habitat Planning Area (MHPA) and Vernal Pool Habitat Conservation Program (VPHCP) (CE-G.1., CE-G.2., CE-G.3.)</li> </ul>
<p>H. Wetlands</p>	<p><u>Goals:</u></p> <ul style="list-style-type: none"> <li>No change</li> </ul> <p><u>Discussion:</u></p> <ul style="list-style-type: none"> <li>Updated to reflect Vernal Pool Habitat Conservation Plan</li> </ul> <p><u>Policies:</u></p> <ul style="list-style-type: none"> <li>Amended policy to reflect restoration targets (CE-H.5.)</li> </ul>

Conservation Element Section	Summary of Changes
I. Sustainable Energy	<p><u>Goals:</u></p> <ul style="list-style-type: none"> <li>• No change</li> </ul> <p><u>Discussion:</u></p> <ul style="list-style-type: none"> <li>• No change</li> </ul> <p><u>Policies:</u></p> <ul style="list-style-type: none"> <li>• Amended policy to reflect decarbonization targets for municipal facilities (CE-I.1.)</li> </ul>
J. Urban Forestry	<p><u>Goals:</u></p> <ul style="list-style-type: none"> <li>• No change</li> </ul> <p><u>Discussion:</u></p> <ul style="list-style-type: none"> <li>• No change</li> </ul> <p><u>Policies:</u></p> <ul style="list-style-type: none"> <li>• Amended policy to create and maintain a Street Tree Master Plan and prioritize the implementation of urban forestry in structurally excluded communities and Communities of Concern (CE-J.1.)</li> </ul>
K. Mineral Production	<p><u>Goals:</u></p> <ul style="list-style-type: none"> <li>• No change</li> </ul> <p><u>Discussion:</u></p> <ul style="list-style-type: none"> <li>• Revised Figure CE-6: Generalized Mineral Land Classification to reflect latest Multi-Habitat Planning Area (MHPA) and City boundary</li> </ul> <p><u>Policies:</u></p> <ul style="list-style-type: none"> <li>• No change</li> </ul>
L. Agricultural Resources	<p><u>Goals:</u></p> <ul style="list-style-type: none"> <li>• No change</li> </ul> <p><u>Discussion:</u></p> <ul style="list-style-type: none"> <li>• No change</li> </ul> <p><u>Policies:</u></p> <ul style="list-style-type: none"> <li>• No change</li> </ul>
M. Border/International Conservation	<p><u>Goals:</u></p> <ul style="list-style-type: none"> <li>• No change</li> </ul> <p><u>Discussion:</u></p> <ul style="list-style-type: none"> <li>• No change</li> </ul> <p><u>Policies:</u></p> <ul style="list-style-type: none"> <li>• Minor text edits for clarity</li> </ul>

Conservation Element Section	Summary of Changes
N. Environmental Education	<p><u>Goals:</u></p> <ul style="list-style-type: none"> <li>• No change</li> </ul> <p><u>Discussion:</u></p> <ul style="list-style-type: none"> <li>• No change</li> </ul> <p><u>Policies:</u></p> <ul style="list-style-type: none"> <li>• No change</li> </ul>

DRAFT

## 8. NOISE ELEMENT

Noise Element Section	Summary of Changes
Introduction	<ul style="list-style-type: none"> <li>No change</li> </ul>
A. Noise and Land Use Compatibility	<p><u>Goals:</u></p> <ul style="list-style-type: none"> <li>No change</li> </ul> <p><u>Discussion:</u></p> <ul style="list-style-type: none"> <li>Updated Table NE-3: Land Use-Noise Compatibility Guidelines to allow conditionally compatible vehicle and vehicular equipment sales and services uses; wholesale, distribution, storage use; and industrial use in exterior noise exposure areas of 75 dBA CNEL.</li> <li>Updated Table NE-3 notes and footnotes</li> </ul> <p><u>Policies:</u></p> <ul style="list-style-type: none"> <li>New policy that prohibits outdoor activity and requires mitigation of indoor activity for land uses that are incompatible with the land use designation</li> </ul>
B. Motor Vehicle Traffic Noise	<p><u>Goals:</u></p> <ul style="list-style-type: none"> <li>No change</li> </ul> <p><u>Discussion:</u></p> <ul style="list-style-type: none"> <li>Portion of discussion relocated to policy</li> </ul> <p><u>Policies:</u></p> <ul style="list-style-type: none"> <li>New policy (based on discussion) added regarding the location of future multiple-unit and mixed-use residential uses (NE-B.10.)</li> </ul>
C. Trolley and Train Noise	<p><u>Goals:</u></p> <ul style="list-style-type: none"> <li>No change</li> </ul> <p><u>Discussion:</u></p> <ul style="list-style-type: none"> <li>No change</li> </ul> <p><u>Policies:</u></p> <ul style="list-style-type: none"> <li>No change</li> </ul>

Noise Element Section	Summary of Changes
D. Aircraft Noise	<p><u>Goals:</u></p> <ul style="list-style-type: none"> <li>• No change</li> </ul> <p><u>Discussion:</u></p> <ul style="list-style-type: none"> <li>• Updated references to Montgomery-Gibbs Executive Airport</li> </ul> <p><u>Policies:</u></p> <ul style="list-style-type: none"> <li>• Amended policy for Montgomery-Gibbs Executive Airport (NE-D.5.)</li> </ul>
E. Commercial and Mixed-Use Activity Noise	<p><u>Goals:</u></p> <ul style="list-style-type: none"> <li>• No change</li> </ul> <p><u>Discussion:</u></p> <ul style="list-style-type: none"> <li>• No change</li> </ul> <p><u>Policies:</u></p> <ul style="list-style-type: none"> <li>• No change</li> </ul>
F. Industrial Activity Noise	<p><u>Goals:</u></p> <ul style="list-style-type: none"> <li>• No change</li> </ul> <p><u>Discussion:</u></p> <ul style="list-style-type: none"> <li>• Portion of discussion relocated to policy</li> </ul> <p><u>Policies:</u></p> <ul style="list-style-type: none"> <li>• New policy (based on discussion) added regarding the location of future industrial uses (NE-F.5.)</li> </ul>
G. Construction, Refuse Vehicles, Parking Lot Sweepers, and Public Activity Noise	<p><u>Goals:</u></p> <ul style="list-style-type: none"> <li>• No change</li> </ul> <p><u>Discussion:</u></p> <ul style="list-style-type: none"> <li>• No change</li> </ul> <p><u>Policies:</u></p> <ul style="list-style-type: none"> <li>• No change</li> </ul>
H. Event Noise	<p><u>Goals:</u></p> <ul style="list-style-type: none"> <li>• No change</li> </ul> <p><u>Discussion:</u></p> <ul style="list-style-type: none"> <li>• No change</li> </ul> <p><u>Policies:</u></p> <ul style="list-style-type: none"> <li>• No change</li> </ul>

Noise Element Section	Summary of Changes
I. Typical Noise Attenuation Methods	<p><u>Goals:</u></p> <ul style="list-style-type: none"> <li>• No change</li> </ul> <p><u>Discussion:</u></p> <ul style="list-style-type: none"> <li>• No change</li> </ul> <p><u>Policies:</u></p> <ul style="list-style-type: none"> <li>• No change</li> </ul>

DRAFT

## APPENDICES

Appendix	Summary of Changes
Appendix A, SF-1: Relationship among Elements and Issues	<ul style="list-style-type: none"> <li>No change</li> </ul>
Appendix A, SF-2: Strategic Framework Element Core Values	<ul style="list-style-type: none"> <li>No change</li> </ul>
Appendix A, SF-3: Contributors to the Development of the Strategic Framework	<ul style="list-style-type: none"> <li>No change</li> </ul>
Appendix B, LU-1: Village Propensity Map Methodology	<ul style="list-style-type: none"> <li>Pending update based on revised Figure LU-1: Village Propensity</li> </ul>
Appendix B, LU-2: Community Plan and General Plan Land Use Designations	<ul style="list-style-type: none"> <li>No change</li> </ul>
Appendix B, LU-3: Proposition A – The Managed Growth Initiative (1985)	<ul style="list-style-type: none"> <li>No change</li> </ul>
Appendix C, EP-1: Prime Industrial Land Criteria	<ul style="list-style-type: none"> <li>No change</li> </ul>
Appendix C, EP-2: Collocation/Conversion Suitability Factors	<ul style="list-style-type: none"> <li>No change</li> </ul>
Appendix C, EP-3: Guidelines for the Regional Center and Subregional Employment Areas	<ul style="list-style-type: none"> <li>No change</li> </ul>
Appendix D, CE-1: Natural Resource-Based Plans and Policies	<ul style="list-style-type: none"> <li>No change</li> </ul>
Appendix E, HP-1: San Diego History	<ul style="list-style-type: none"> <li>No change</li> </ul>



GLOSSARY

Glossary	Summary of Changes
Glossary	<p><u>Definitions added for:</u></p> <ul style="list-style-type: none"> <li>• Climate Equity Index</li> <li>• Communities of Concern</li> <li>• Institutional Use</li> <li>• Multiple-Use Commercial Land Use</li> <li>• Multiple-Use Residential Land Use</li> <li>• Non-Residential Land Use</li> <li>• Residential Land Use</li> <li>• Structurally Excluded Community</li> </ul> <p><u>Definitions updated for:</u></p> <ul style="list-style-type: none"> <li>• Regional Plan (RP)</li> </ul> <p><u>Definitions removed for:</u></p> <ul style="list-style-type: none"> <li>• Facilities Benefit Assessment (FBA)</li> <li>• Regional Comprehensive Plan</li> </ul>

DRAFT



## BLUEPRINT SD SURVEY RESULTS

May 2023

### I. OVERVIEW

A citywide survey was conducted over the span of either weeks from March 9, 2023 to May 5, 2023. During this time, 288 responses were collected. The survey was prepared with consultant support and hosted on an external web platform ([www.blueprintsd.org](http://www.blueprintsd.org)) created specifically for the Blueprint SD initiative. The web platform was divided into five interactive screens:

- **Home Screen:** Shared an introductory video to Blueprint SD available in English and Spanish.
- **A Future for San Diego:** Provided information on San Diego's growth projections, demographic data (age, ethnicity, and income), mode share, greenhouse gas emissions, and values from the City's Strategic Plan.
- **Current Challenges:** Describes the City's housing crisis, the impacts of climate change, and need for bold action to address these issues.
- **Priorities Survey:** Divided into four parts and asked participants to rank various actions.
  - Part I: Provide convenient and affordable transportation options
  - Part II: Get to and from work in a climate-friendly way
  - Part III: Plan for more homes near transit
  - Part IV: Create complete neighborhoods
- **A Blueprint for San Diego:** Thanked participants for their responses and provided the opportunity for additional comments.

The web platform had five built-in language options that users could select, including English, Spanish, Tagalog, Vietnamese, and Chinese.

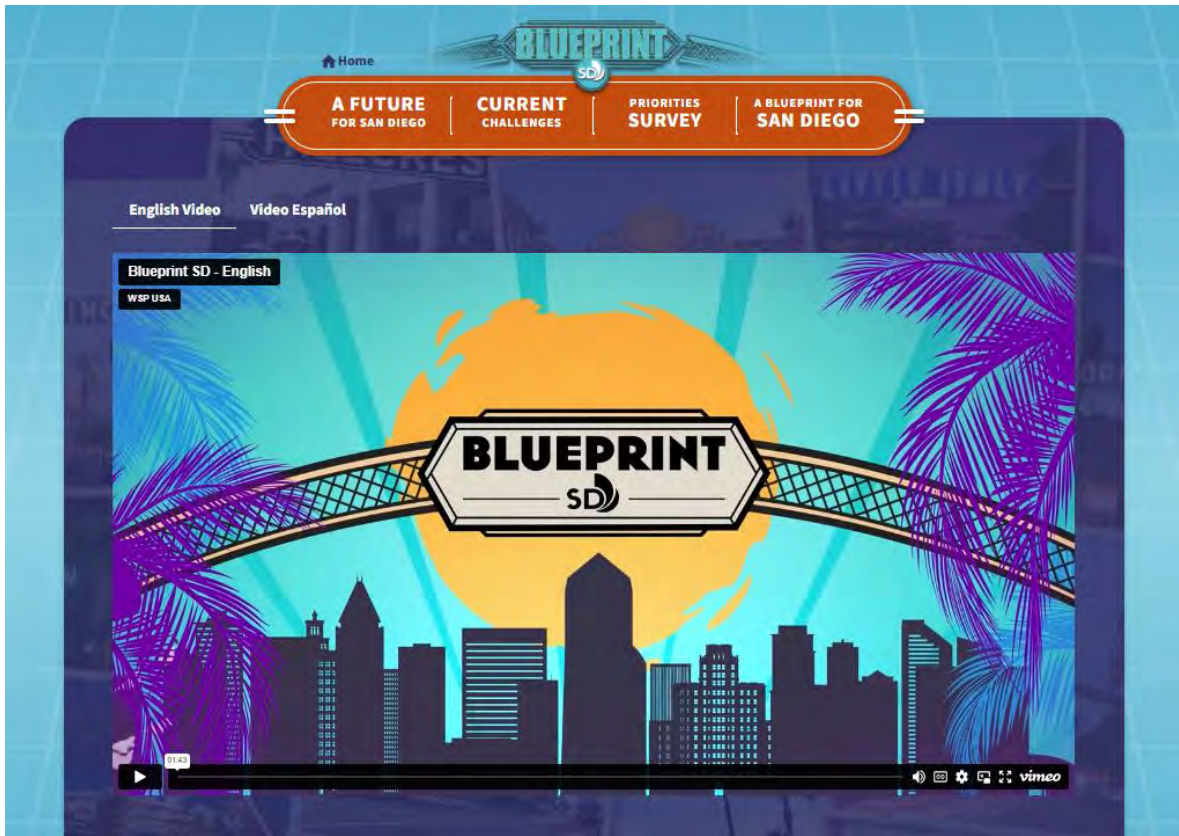


Image of the opening home screen

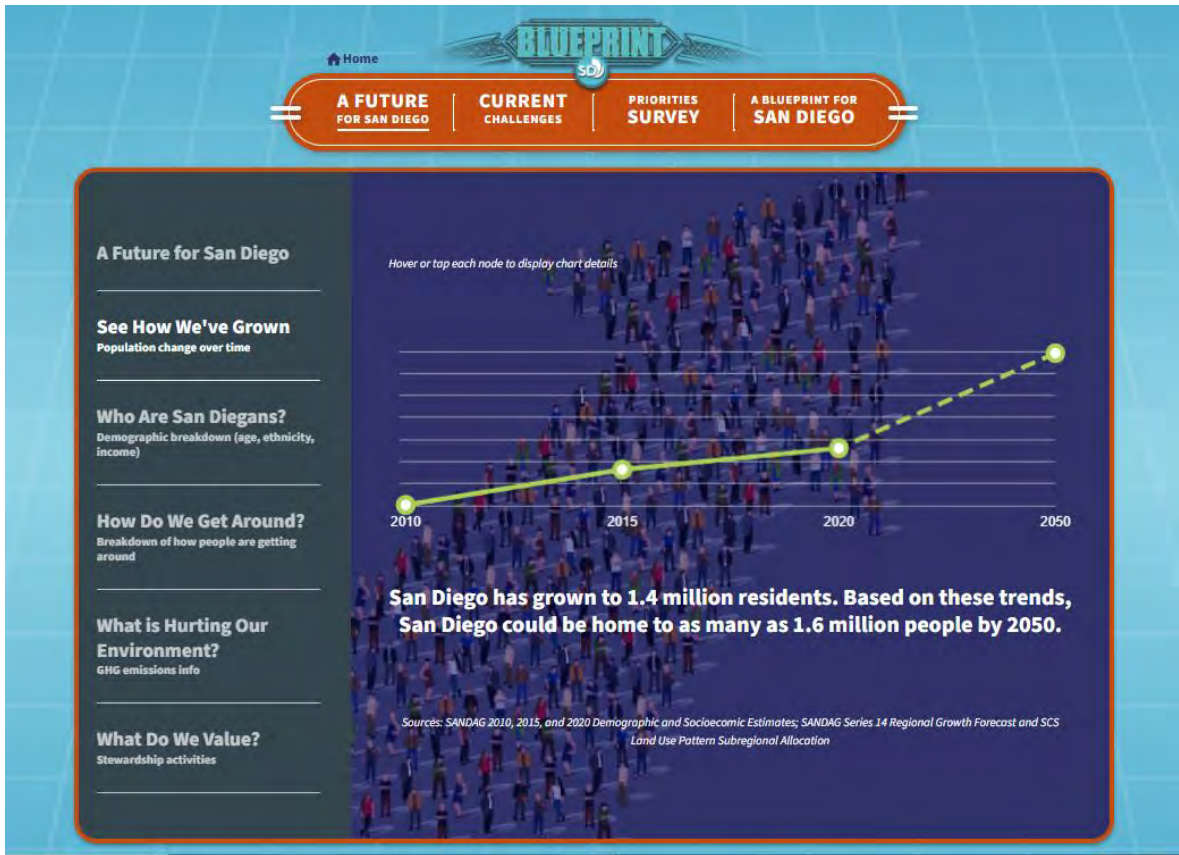


Image of "A Future for San Diego" screen





Image of "Current Challenges" screen

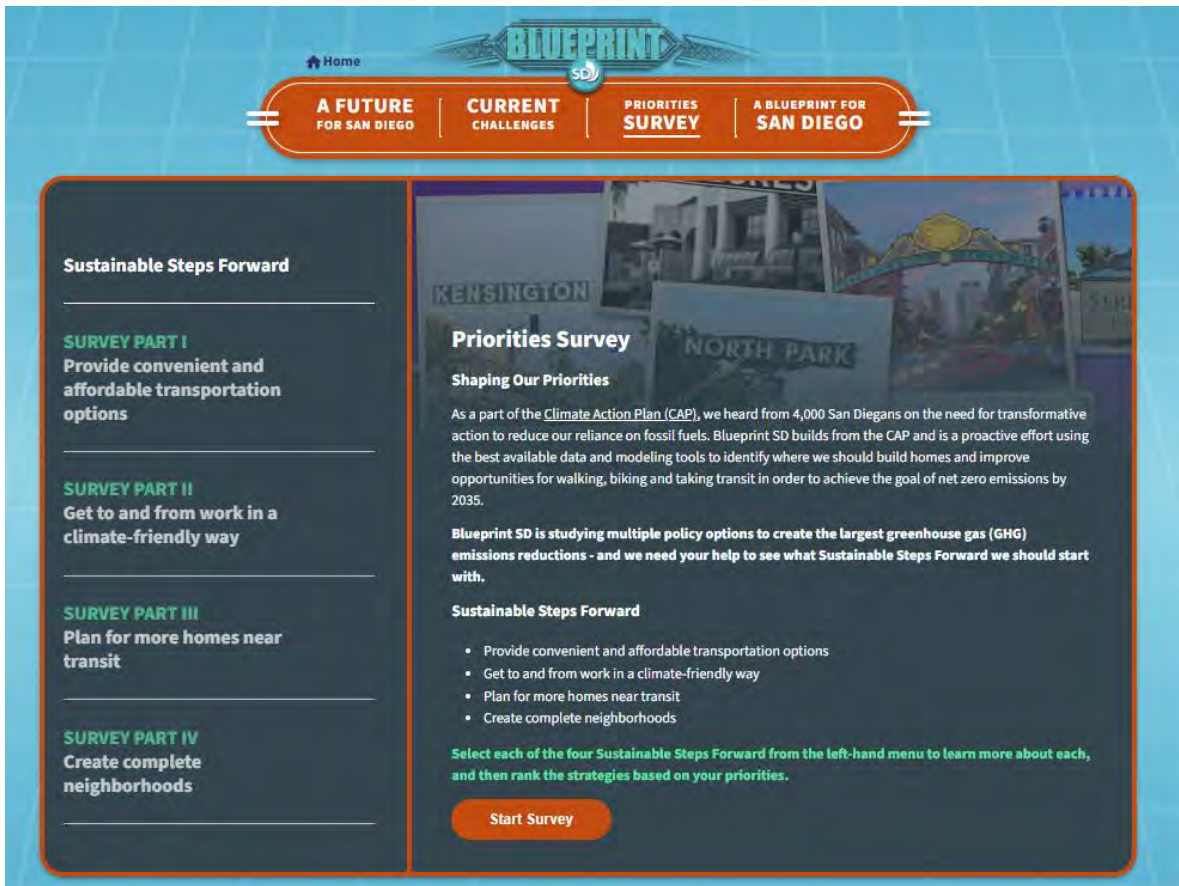


Image of "Priorities Survey" Screen

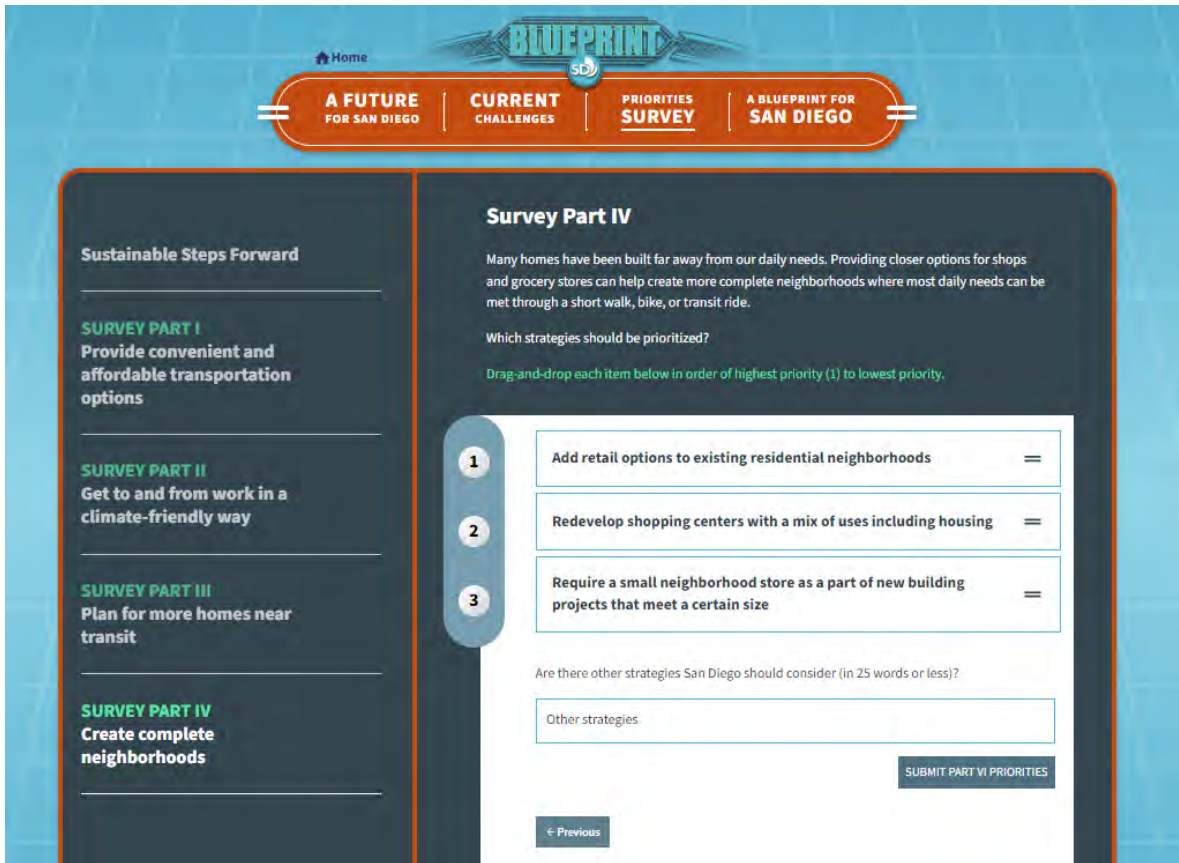


Image of "Priorities Survey" ranking exercise



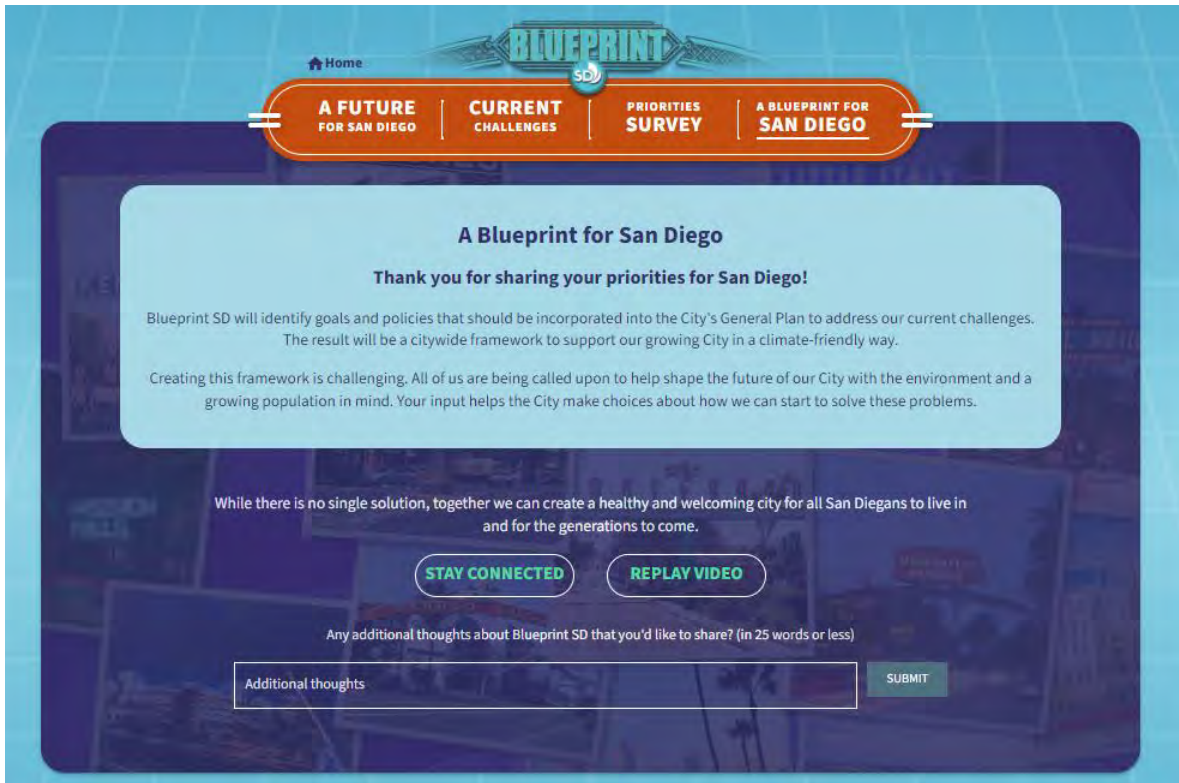


Image of "A Blueprint for San Diego" closing screen



## II. SURVEY RESULTS

The “Priorities Survey” screen contained the main Blueprint SD survey activity. Participants were invited to rank which strategies are most important to them according to four Sustainable Steps Forward. In total, the survey collected 288 responses; however, not all participants provided input for each Sustainable Step Forward. The survey text and associated responses are summarized in the following sections.

### **Introductory Survey Text:**

#### **Shaping Our Priorities**

As a part of the [Climate Action Plan \(CAP\)](#), we heard from 4,000 San Diegans on the need for transformative action to reduce our reliance on fossil fuels. Blueprint SD builds from the CAP and is a proactive effort using the best available data and modeling tools to identify where we should build homes and improve opportunities for walking, biking and taking transit in order to achieve the goal of net zero emissions by 2035.

**Blueprint SD is studying multiple policy options to create the largest greenhouse gas (GHG) emissions reductions - and we need your help to see what Sustainable Steps Forward we should start with.**

#### **Sustainable Steps Forward**

- Provide convenient and affordable transportation options
- Get to and from work in a climate-friendly way
- Plan for more homes near transit
- Create complete neighborhoods

**Select each of the four Sustainable Steps Forward from the left-hand menu to learn more about each, and then rank the strategies based on your priorities.**

**Part 1: Provide convenient and affordable transportation options.**

Daily transportation choices have a big impact on our carbon footprint and make up over one-half (55%) of the emissions in San Diego. Wide roads and the availability of parking have made car usage convenient and affordable...and sometimes driving is the only realistic option to get around. To reduce our emissions, we need to increase the affordability and convenience of climate-friendly transportation options like public-transit.

Which strategies should be prioritized?

Drag-and-drop each item below in order of highest priority (1) to lowest priority.

**Responses: 139**

Strategy	Rank						Rank Summary	
	1	2	3	4	5	6	Average	Overall
Implement more frequent transit service (5-7 minute headways)	71	38	23	7	0	0	1.76	1
Upgrade local bus lines to bus rapid transit (BRT) or subway	29	56	34	16	3	1	2.36	2
Provide a low-cost transit pass to each household	14	24	41	22	24	14	3.43	3
Convert car lanes to priority lanes for buses and carpools	13	14	22	44	34	12	3.78	4
Charge for parking at major job centers and destinations	1	3	9	34	56	36	4.79	5
Don't require parking for new buildings	11	4	10	16	22	76	4.88	6
<b>Total</b>	<b>139</b>	<b>139</b>	<b>139</b>	<b>139</b>	<b>139</b>	<b>139</b>		

**Part 2: Get to and from work in a climate-friendly way.**

A key decision we make every day is how to get to and from work. Many job centers have been built far away from homes and the only option is to use a car. This results in long commutes in traffic with few other options to get around. Providing more options to get to work in a climate-friendly way and reducing the need for additional car travel by providing on-site amenities, such as a café or gym, can help lower emissions.

Which strategies should be prioritized?

Drag-and-drop each item below in order of highest priority (1) to lowest priority.

**Responses: 129**

Strategy	Rank				Summary	
	1	2	3	4	Average	Overall
Incentivize employers to implement programs and amenities to expand transportation options for workers, such as shuttles, subsidized transit passes, bike lockers, etc.	37	35	42	15	2.27	1
Provide incentives for employers to be in job centers that are already accessible by transit	39	33	31	26	2.34	2
Create mobility hubs at job centers that connect biking, transit, and shared mobility services (like rideshare and e-scooters/e-bikes)	41	26	27	35	2.43	3
Incentivize office buildings and complexes to provide amenities for workers on-site, such as a café, gym, etc.	12	35	29	53	2.95	4
<b>Total</b>	<b>129</b>	<b>129</b>	<b>129</b>	<b>129</b>		

**Part 3: Plan for more homes near transit.**

The demand for housing continues to increase. Planning for new homes near transit is another sustainable step forward that we can take to lower emissions. The City has identified various transit supportive areas, including Transit Priority Areas and Mobility Zones 1, 2, and 3.

Which strategies should be prioritized?

Drag-and-drop each item below in order of highest priority (1) to lowest priority.

**Responses: 125**

Strategy	Rank				Rank Summary	
	1	2	3	4	Average	Overall
Make it faster to permit and build new homes close to transit	64	37	17	7	1.74	1
Provide more flexible regulations such as increased height for buildings close to transit	20	55	36	14	2.35	2
Provide incentives for different types of homes such as microunits, townhomes, accessory dwelling units (ADUs), and others so people have more housing options close to transit	26	24	56	19	2.54	3
Put a maximum cap on the amount of parking that gets close to transit	15	9	16	85	3.37	4
<b>Total</b>	<b>125</b>	<b>125</b>	<b>125</b>	<b>125</b>		

**Part 4: Create complete neighborhoods.**

Many homes have been built far away from our daily needs. Providing closer options for shops and grocery stores can help create more complete neighborhoods where most daily needs can be met through a short walk, bike, or transit ride.

Which strategies should be prioritized?

Drag-and-drop each item below in order of highest priority (1) to lowest priority.

**Responses: 125**

Strategy	Rank			Rank Summary	
	1	2	3	Average	Overall
Redevelop shopping centers with a mix of uses including housing	55	46	24	1.75	1
Add retail options to existing residential neighborhoods	46	47	32	1.89	2
Require a small neighborhood store as a part of new building projects that meet a certain size	24	32	69	2.36	3
<b>Total</b>	<b>125</b>	<b>125</b>	<b>125</b>		

### III. DEMOGRAPHIC DATA

Respondents were asked to provide optional demographic data to understand the representation of responses in the survey. The tables below summarize demographic information collected from the survey compared to citywide demographic information from the 2021 American Community Survey (ACS) 1-Year Estimates.

Residency	Survey		Citywide	
	Count	Percentage	Count	Percentage
Homeowner	171	59%	251,643	48%
Renter	84	29%	269,357	52%
Other	17	6%	-	0%
Blank	16	6%	-	0%
Total	288	100%	521,000	100%

Age Group	Survey		Citywide	
	Count	Percentage	Count	Percentage
25 or younger	12	4%	415,117	30%
26-34	49	17%	254,415	18%
35-44	62	22%	195,138	14%
45-54	46	16%	172,549	12%
55-64	46	16%	153,583	11%
65+	40	14%	190,798	14%
Prefer not to answer	17	6%	-	-
Blank	16	6%	-	-
Total	288	100%	1,381,600	100%

Ethnicity	Survey		Citywide	
	Count	Percentage	Count	Percentage
Asian	13	5%	236,643	17%
Black or African American	6	2%	80,008	6%
White	163	57%	642,948	47%
Two or more races	34	12%	250,871	18%
Prefer Not to answer	49	17%	171,130	12%
Blank	23	8%	-	-
Total	288	100%	1,381,600	100%

Latin Ethnicity	Survey		Citywide	
	Count	Percentage	Count	Percentage
Yes, of Hispanic, Latinx, or Spanish ethnicity	38	13%	400,337	29%
No, not of Hispanic, Latinx, or Spanish ethnicity	163	57%	981,263	71%
Prefer Not to answer	57	20%	-	-
Blank	30	10%	-	-
Total	288	100%	1,381,600	100%

DRAFT