



THE CITY OF SAN DIEGO

M E M O R A N D U M

DATE: November 23, 2021

TO: Planning Commission

FROM: TC Travis Cleveland, Development Project Manager, Development Services

SUBJECT: Gateway Cannabis Outlet CUP Appeal, Project Number 660383, Planning Commission Agenda for December 2, 2021, continued from November 4, 2021

At the Planning Commission hearing for this item on November 4, 2021, staff was asked if Mount Hope Cemetery at 3751 Market Street counts as a park from which the proposed cannabis outlet at 995 Gateway Center Way should be separated by at least 1,000 feet per SDMC 141.0504(a)(1).

Staff has conducted additional research and has determined that, as shown on the attached land use maps, the cemetery is not designated as a park in either the Southeastern San Diego Community Plan or the City of San Diego's General Plan Recreation Element (see Attachments 1 and 2). Therefore, staff has determined that the proposed cannabis outlet is not required to maintain a separation distance from this land use.

This issue does not affect staff's recommendation to deny the appeal and affirm the decision of the Hearing Officer to approve Conditional Use Permit (CUP) No. 2411994.

Attachments: 1. Southeastern San Diego Community Plan Land Use Map
2. San Diego General Plan Recreation Element Map



Institutional and Public/Semi-Public Facilities

 Institutional

Attachment 1: Southeastern San Diego Community
Plan Land Use Map

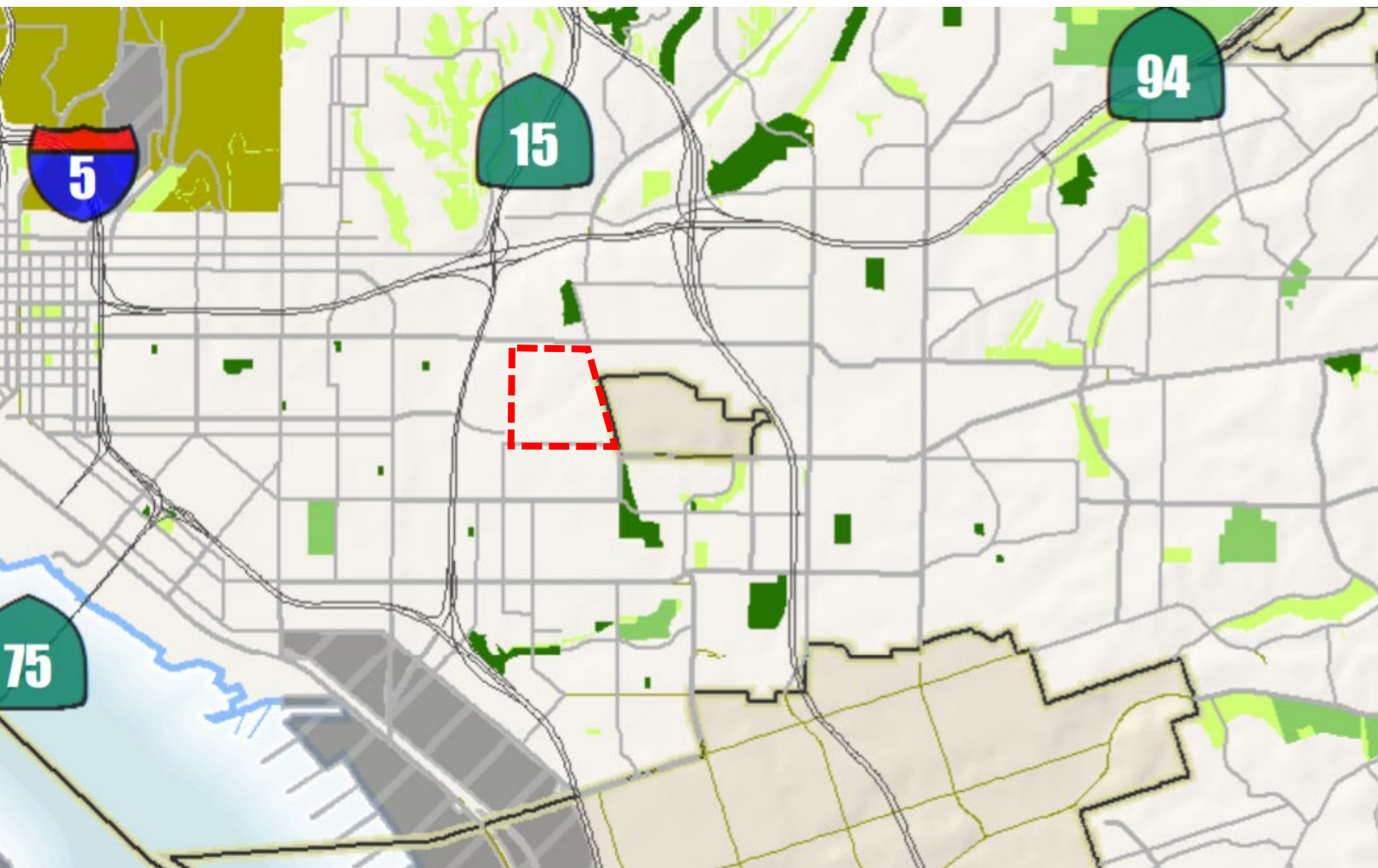


Figure RE-1

Community Plan Designated Open Space and Parks Map

-  Military Use
-  Neighborhood Park
-  Community Park
-  Resource Based Park
-  Open Space (Public & Private)

Attachment 2: San Diego General Plan Recreation
Element Map