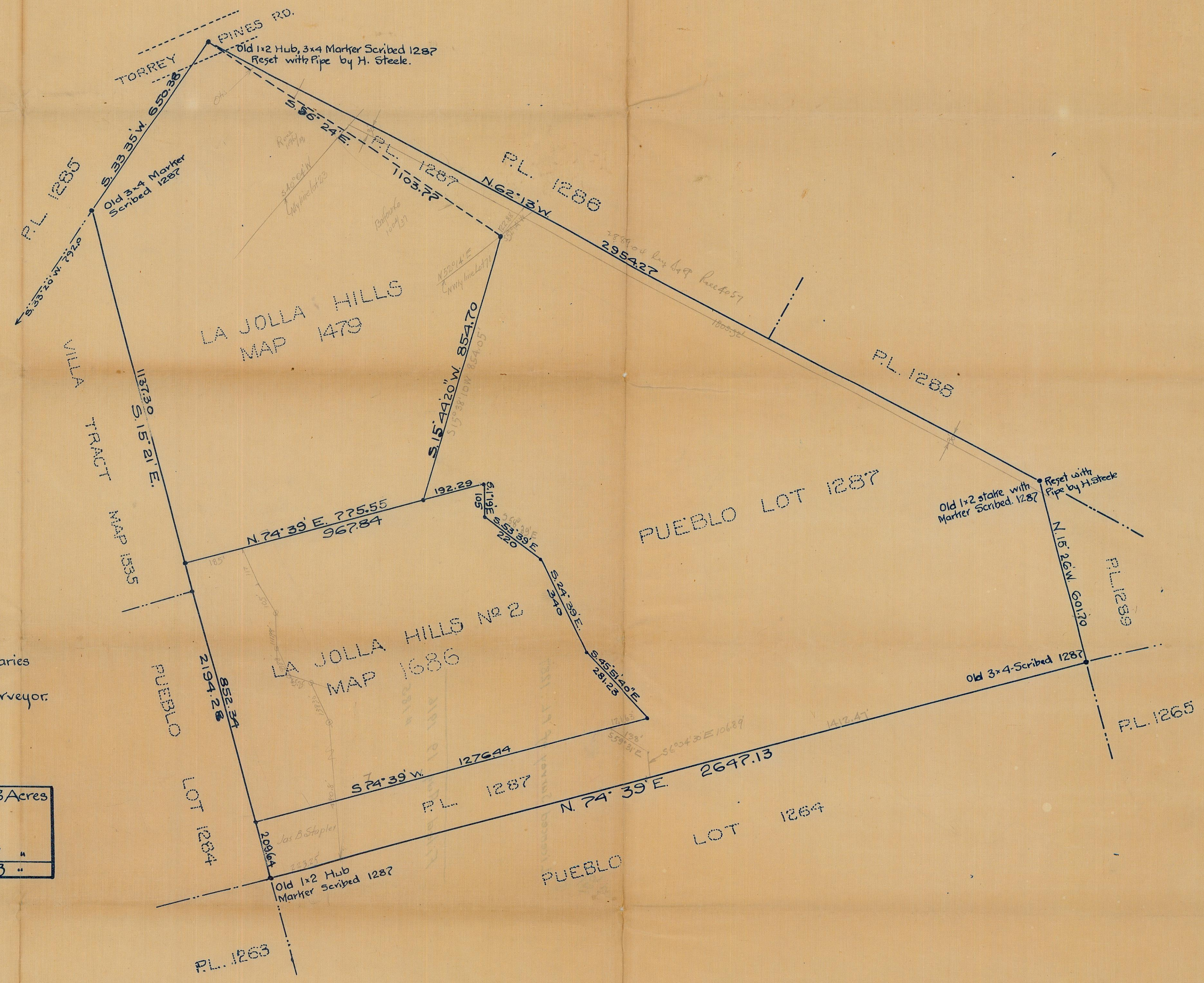


LICENSED SURVEY MAP
No 185

Being a Survey of the Boundaries of
PUEBLO LOT 1287
 CITY OF SAN DIEGO, CAL.
 Surveyed July 1916, by D.H. Loeberstein, C.E.
 SCALE: 1" = 200'

This Map is filed for the purpose of showing the boundaries of Pueblo Lot 1287 - City of San Diego, Cal.
 D.H. Loeberstein, Licensed Surveyor.
 August 16-1916.

Total Area of P.L. 1287	106.88 Acres
Area of La Jolla Hills	- 29.69 Acres
" " " " " No 2 - 21.46 "	
Total Area Subdivided	- 51.15 "
Balance of P.L. 1287	55.73 "



Aug. 19, 1916
 Filed at the request of D.H. Loeberstein, at 50 min past 9 o'clock
 A.M. Records of San Diego County, State of California.
 Jno. H. Ferry - County Recorder,
 By W. Howard Terry, Deputy.