



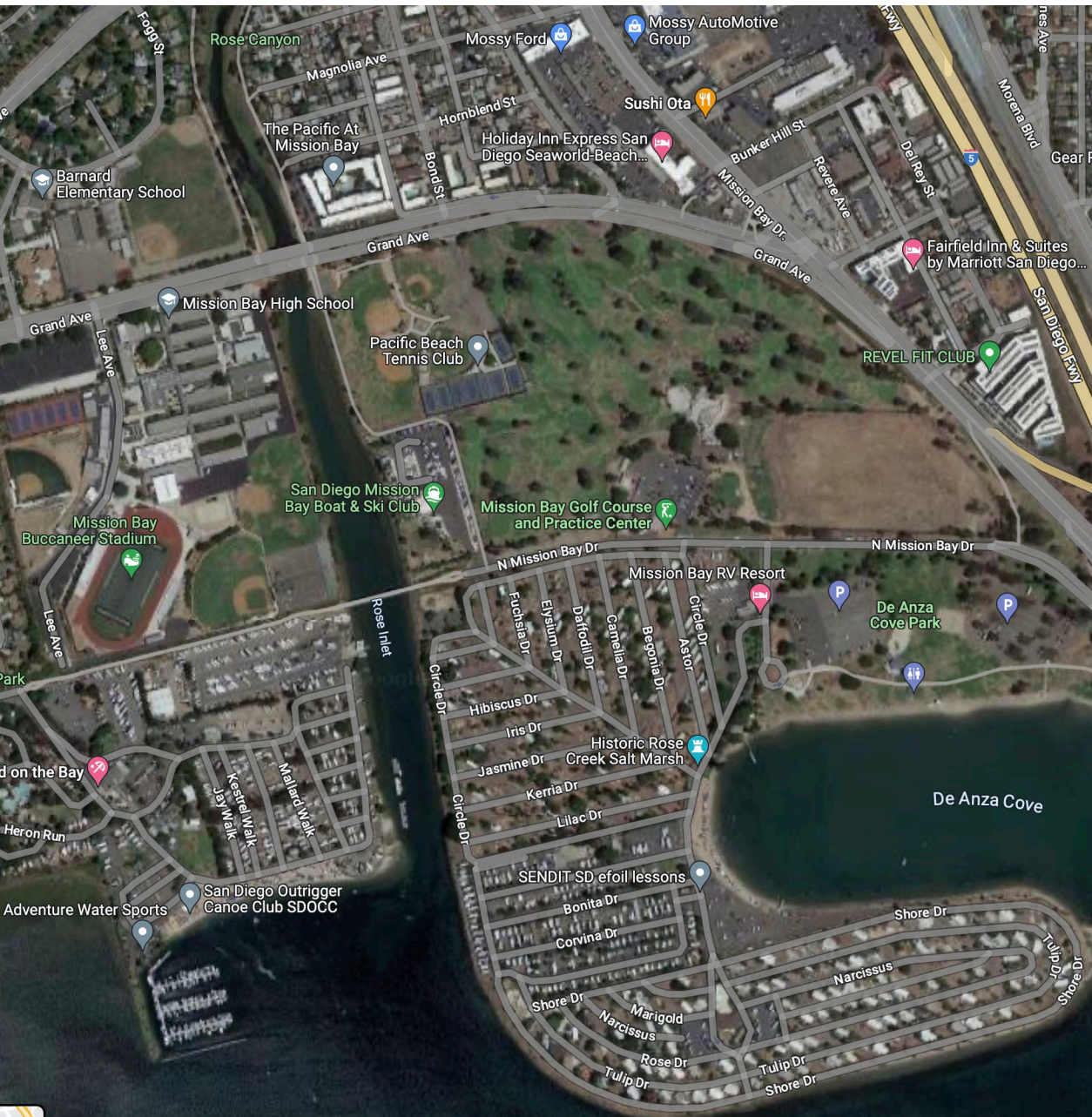
Subcommittee Report of De Anza Natural Plan

Marcella Bothwell

Jon Becker

René Smith





LEGEND

- Active Recreation 66.5 Acres
- Regional Parklands 23.4 Acres
- Open Beach 5.5 Acres
- Low Cost Visitor Accommodations 48.5 Acres
- Boat Facilities 2.6 Acres
- Interpretive Nature Center
- Uplands 36.7 Acres
- Wetlands 225.1 Acres
 - Wetlands at Former Campland 33.9 Acres
 - Wetlands at Existing Kendall-Frost Marsh 86.8 Acres
 - Other new Wetlands 104.4 Acres
- Water Course
- Multi-Use Paths
- Kendall-Frost Marsh Preserve
- Vehicular Access Points
- Potential Water Lease 1.0 Acres



A goal of De Anza Natural is maintaining or enhancing the existing community-serving public recreation facilities in the area. The City will work with the recreation groups to plan for the future of the facilities with design and phased development to avoid disruption to active recreation access. Buffer zones and other land uses proposed for the site of existing recreation facilities after these facilities have been modified, moved, or replaced for continued use, unless imminent climate hazards are identified.

De Anza Natural
De Anza Cove Amendment to the Mission Bay Park Master Plan
Figure 3: Site Plan

- Active Recreation: Facilities identified as suitable for this area include ball fields, lighted tennis courts, a clubhouse facility (shared among recreation users), restrooms/concessions buildings, a ranger station facility, golf facilities , and other sports/recreation facilities that may be proposed as part of a General Development Plan (GDP). De Anza Natural is currently home to community-serving public recreation facilities such as the Bob McEvoy Youth Fields, Tennis Club, and Mission Bay Golf Course and Practice Center. De Anza Natural envisions maintaining or enhancing these facilities as part of a future GDP process that implements community-identified recreation needs. The City will work with the community-serving public recreation facility operators to plan for the future of the facilities and will design and phase development in a manner that minimizes disruption to active recreation access. Buffer zones and other land uses proposed for the site of existing recreation facilities should be implemented after these facilities have been modified, moved, or replaced for continued use, unless imminent climate hazards necessitate more immediate mitigation. As part of the GDP process, a portion of West Mission Bay Drive may be realigned and a portion may be reduced to maintenance/emergency vehicles, bicycles, and pedestrians only, as depicted on Figures 14a and 14b. Included within the active recreation land use area are water quality improvements and associated multi-modal circulation and parking for the above-referenced uses. As part of an improved pedestrian/bike path along Grand

De Anza Subcommittee

- 3 Members of the Parks and Recreation Board
- 3 Members of the Mission Bay Park Committee
- 4 Due Diligence Meetings
 - 14 hours of testimony from
 - Primary Stakeholders
 - Chair's report of Stakeholders
 - Public Comment
- 1 Action item meeting

Due Diligence

- Environmental Groups
 - Andrew Meyer, ED, Audubon Society
 - Heather Henter, ED, Natural Reserve System
 - Debora Knight, ED, Friends of Rose Canyon
- Kumeyaay Natural Resource Management
 - Rebecca Loveless, Renaissance, Inc and Brandon Linton, Cultural Resource Management
- Recreation Groups
 - Billy Bonelli, Mission Bay Youth Fields and Friends
 - Jim Irwin, Pacific Beach Tennis Club
 - Steele Young, Mission Bay Boat and Ski Club and Friends
 - Kurt Carlson, Municipal Golf Committee and Friends
- Low-Cost Visitor Accommodations
 - Michael Gelfand, Campland on the Bay
- Community Impact
 - Bill Evans, Mission Bay Lessee Association
 - Steve Pruett, Pacific Beach Planning Group
 - Charlie Nieto, President, Pacific Beach Town Council

Recommendation of the Sub committee

A motion was made by J. Johnson and seconded by J. Becker to not recommend the De Anza Natural Mission Bay Park Master Plan Amendment AND the DPEIR as presented by Planning Department to Mission Bay Park Committee and Parks and Recreation Board.

- Jon Becker recommended adding the following reasons:
A formal environmental analysis has not been completed

Based on lack of testing studies (Marcella Bothwell clarified study questions):

- Water Quality Report including the current status of both De Anza and the upstream pollutants. The analysis should include the potential solutions to the water quality problem
 - Hydrology Report including a sediment study from upstream sources and the ongoing maintenance required for routine channel dredging to improve water circulation
 - Sea Level Rise Analysis including analysis of how adaption strategies could be implemented
 - Economic and Fiscal Analysis including the upside of potential eco-tourism verses the loss of Mission Bay lessee revenue. The Analysis should include both capital and maintenance costs of the selected plan and alternatives.
 - Analysis of the feasibility of utilizing the South Shores as a viable placement for recreation activities (including the Ski club) recognizing the limitations based on the history of the toxic waste of the landfill.
- Rene Smith added:
 - Need for analysis for alternatives to the De Anza Natural Plan such as Wetlands Optimized Alternative recommended by the RWQCB
 - Need to weigh De Anza Natural Plan and its alternatives against the relevant policies within the City of San Diego Parks Master Plan
 - Regarding CEQA, the plans do not appear to address the concerns raised by the CADFW

Mission Bay Park Committee

- Recommended to approve
 - Revised De Anza Natural Plan and
 - Draft Programmatic Environmental Impact Report

Getting to “YES”

- De Anza Natural is a compromise between interests
 - Current recreation is helped by new language in MBP Draft MP
- More studies to evaluate De Anza in the context of the whole Mission Bay
 - Water Quality
 - Hydrology
 - Sea Level Rise and adaptive retreat (City currently working on)
 - South Shores’ evaluation and planning of clean up of toxic waste dump to expand recreation resources to other parts of the bay

THANK YOU

